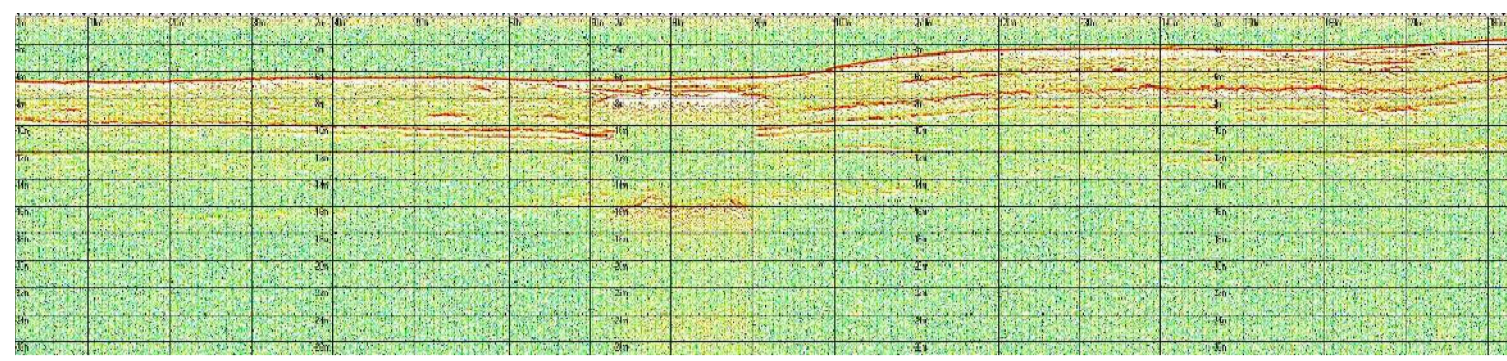
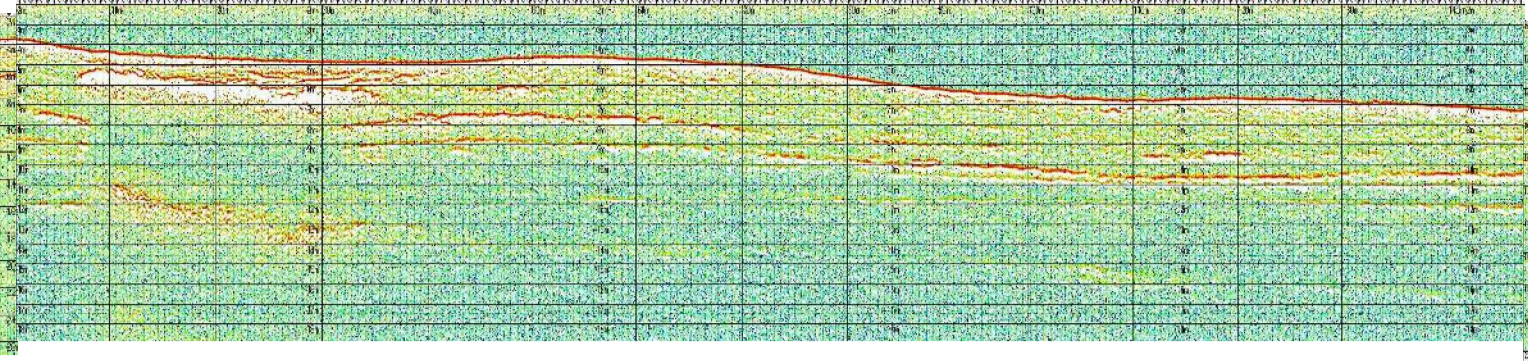


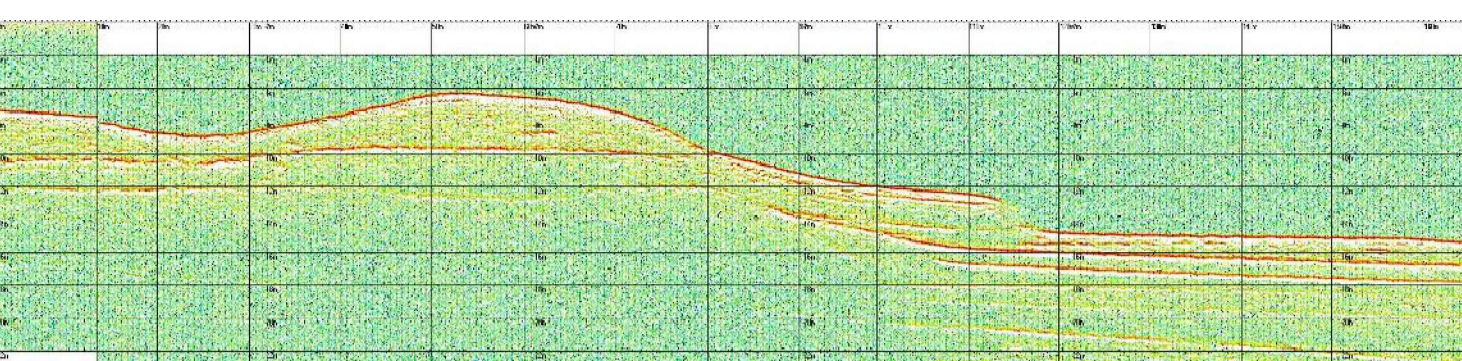
profilo sub-bottom 147



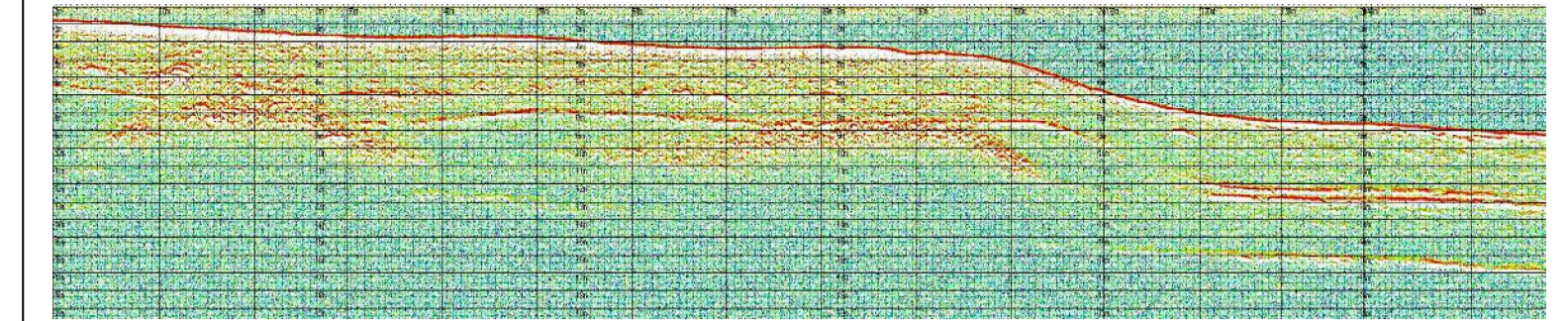
profilo sub-bottom 148



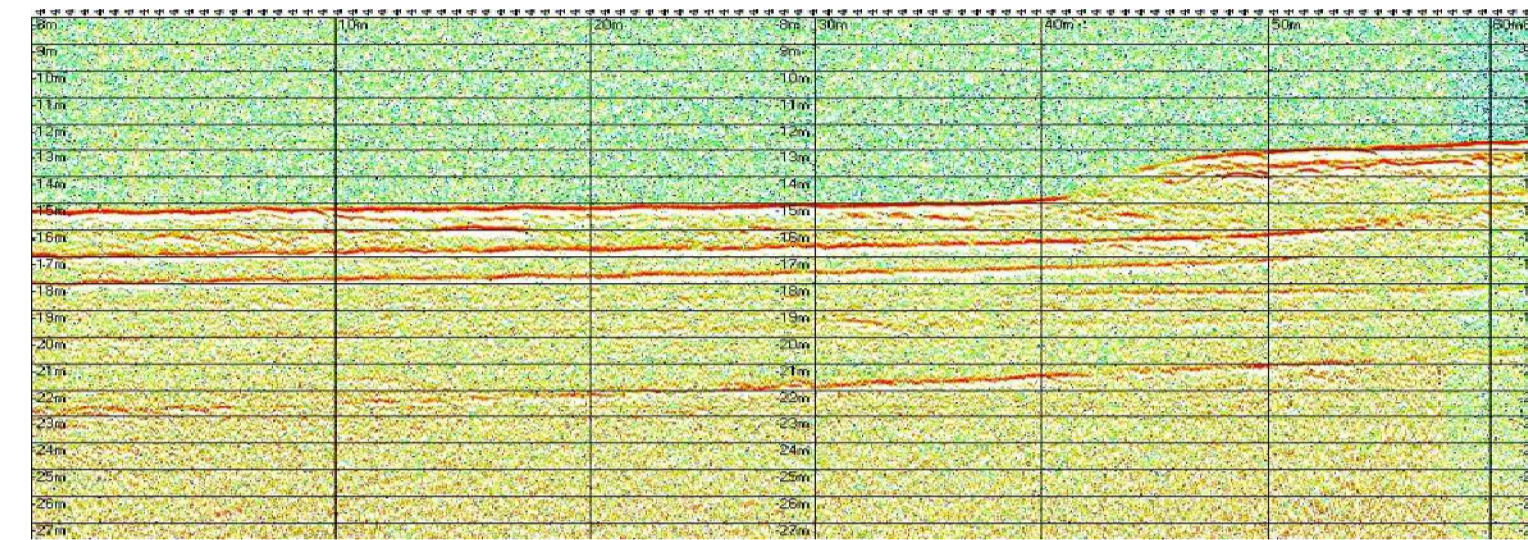
profilo sub-bottom 149



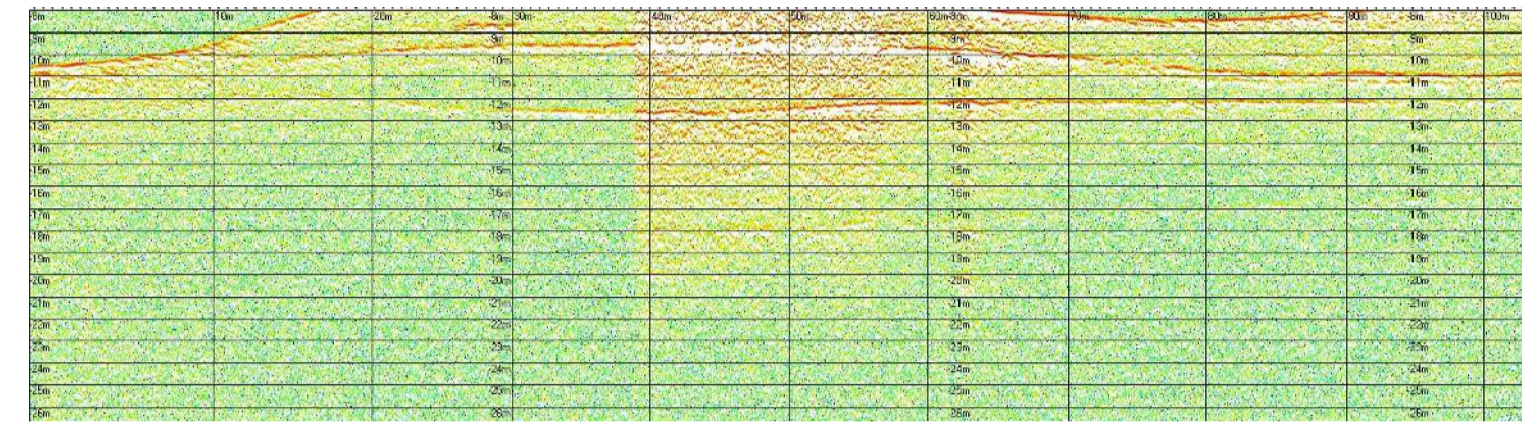
profilo sub-bottom 150



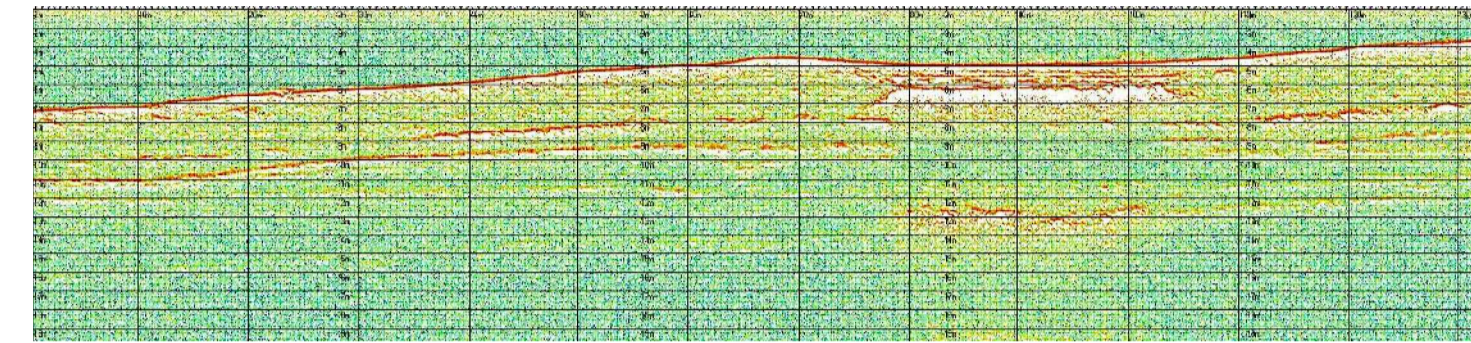
profilo sub-bottom 151



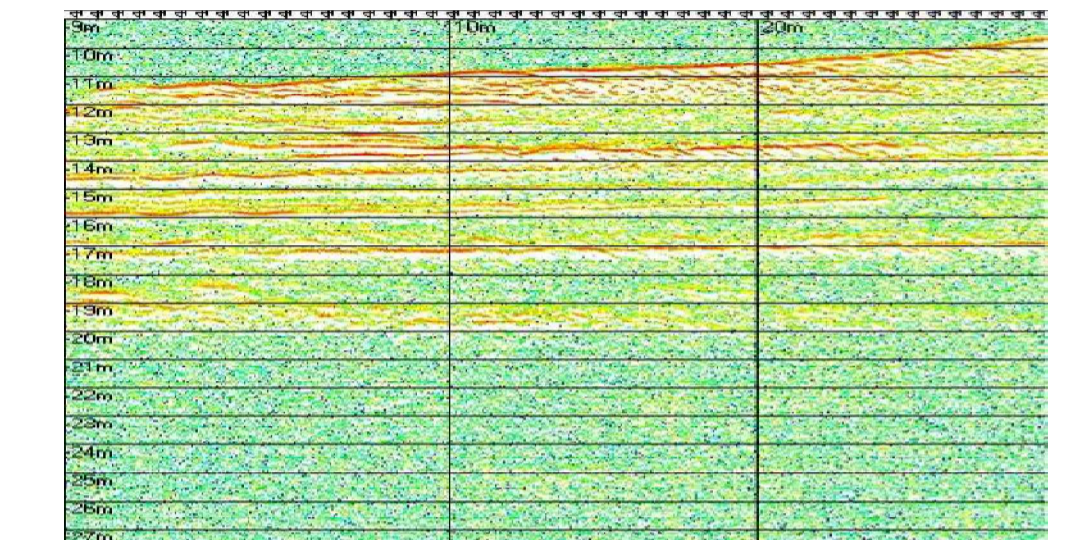
profilo sub-bottom 152



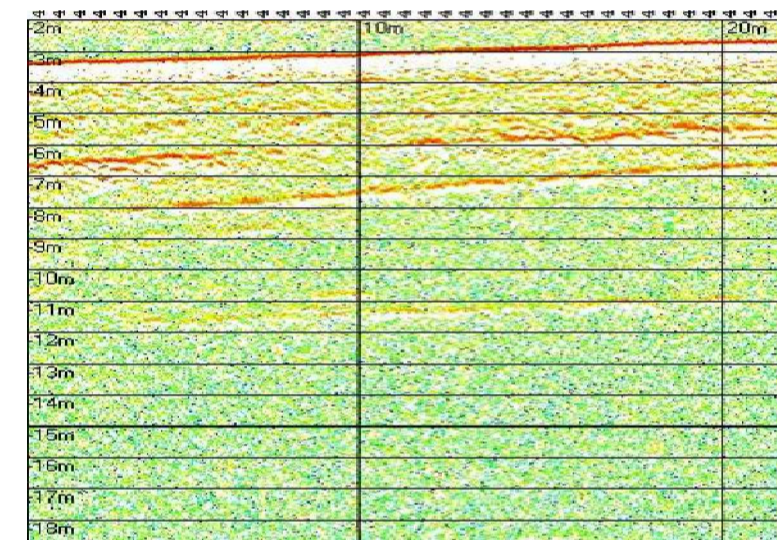
profilo sub-bottom 153



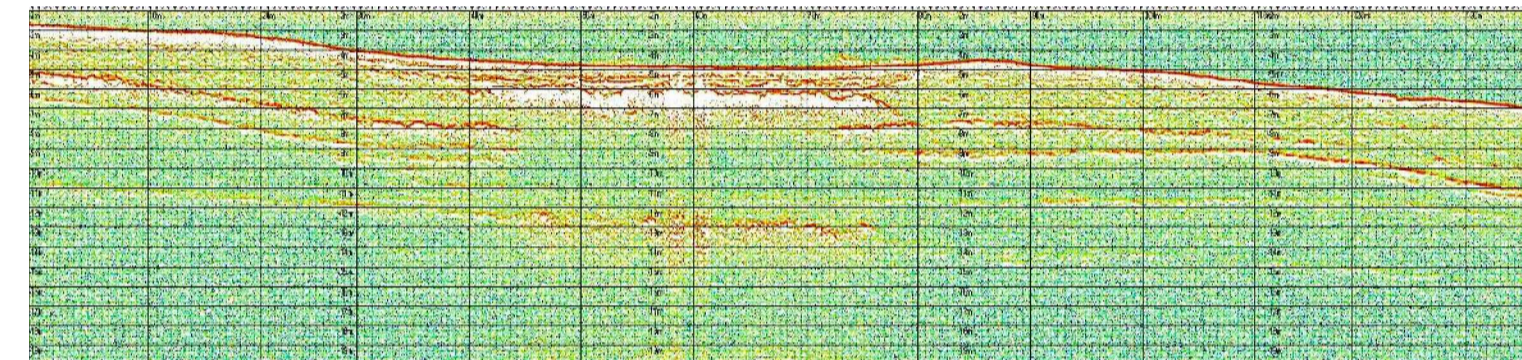
profilo sub-bottom 154



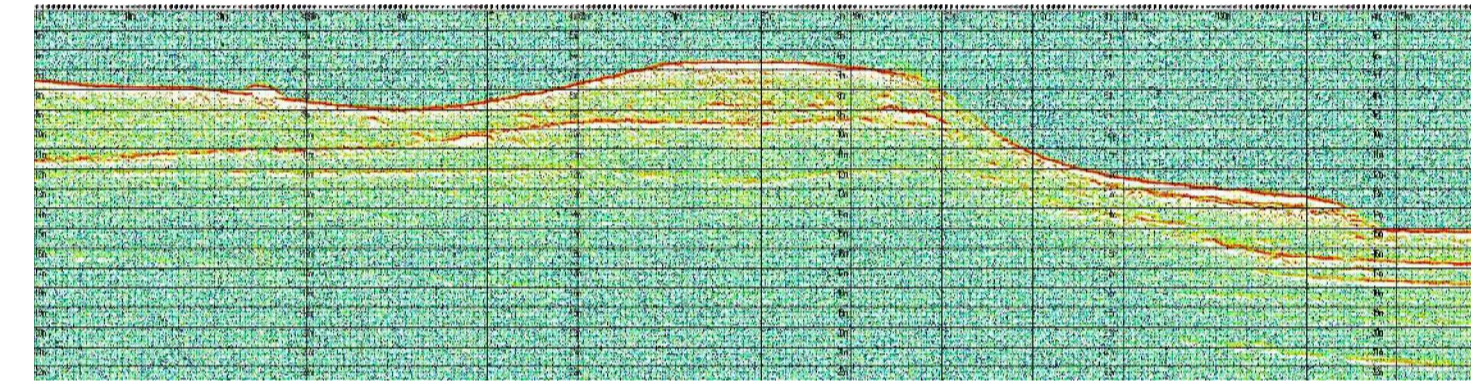
profilo sub-bottom 155



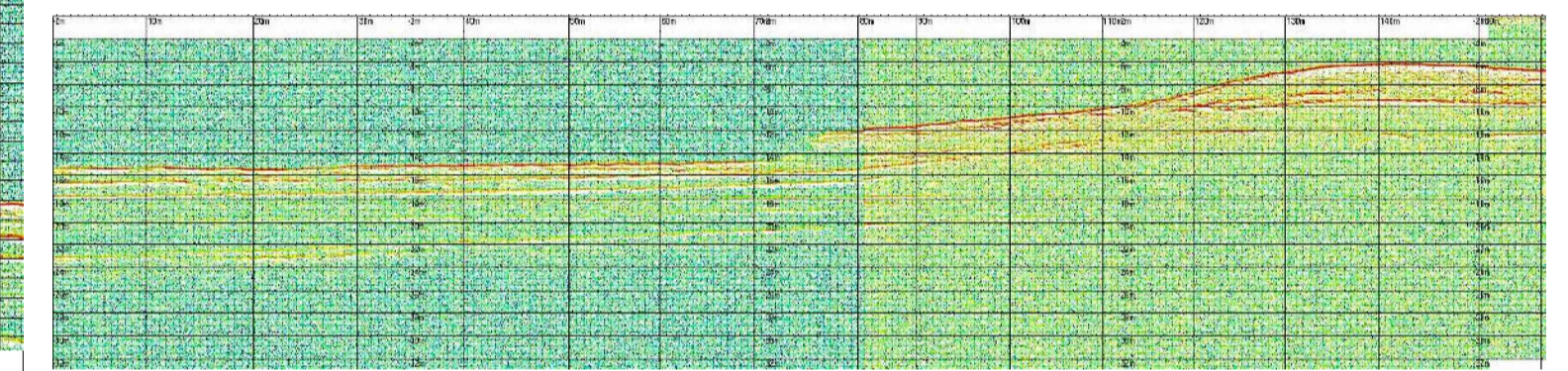
profilo sub-bottom 156



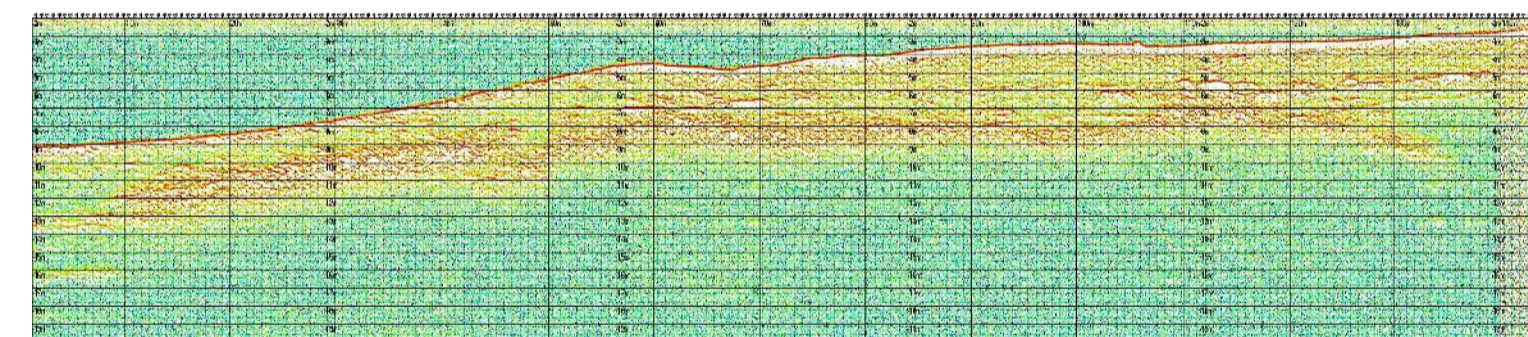
profilo sub-bottom 157



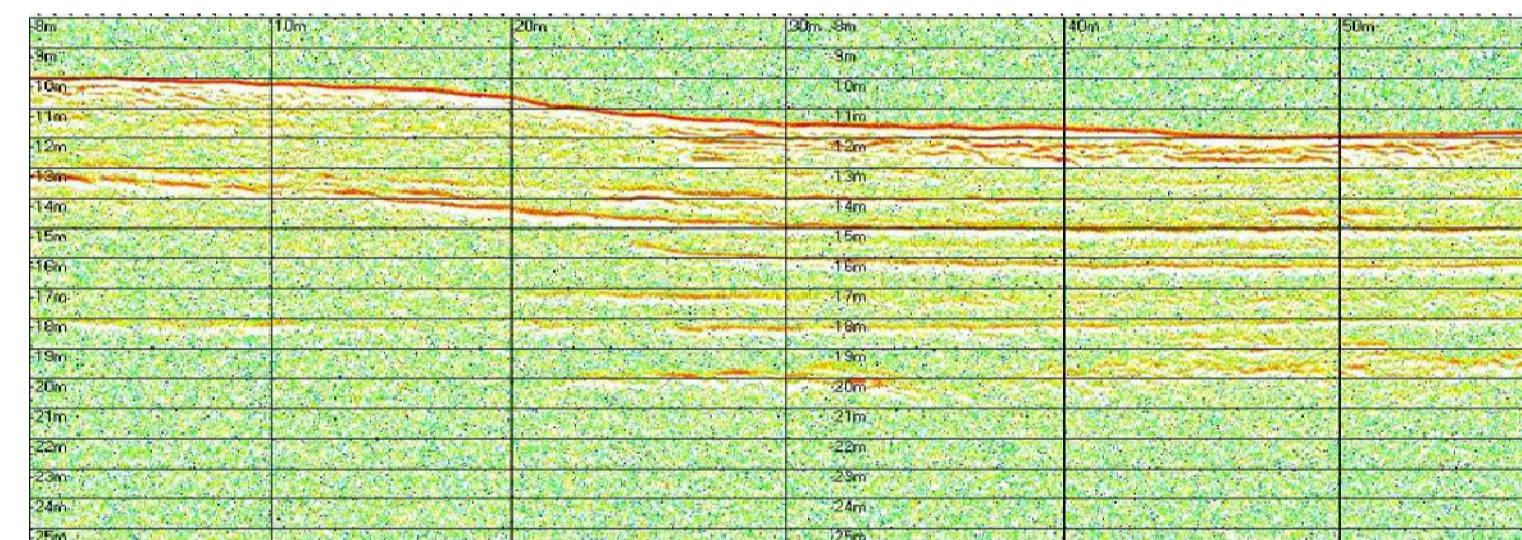
profilo sub-bottom 158



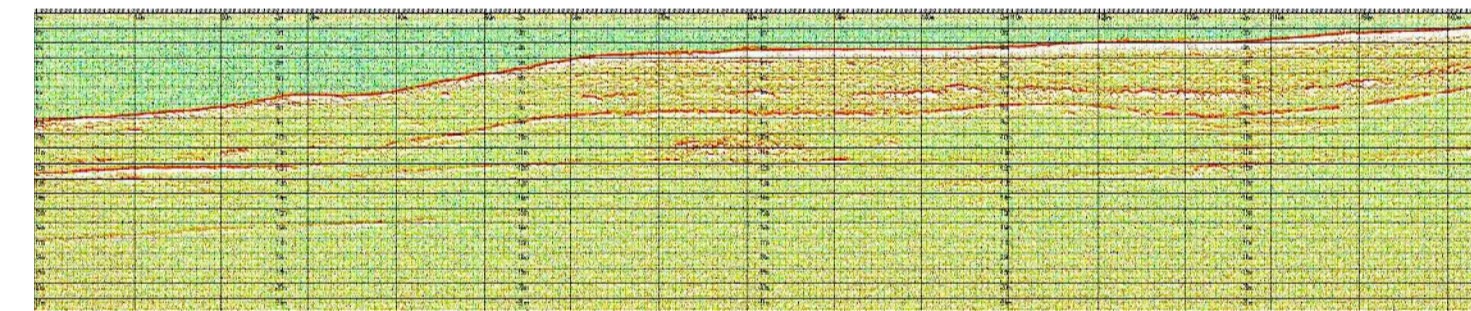
profilo sub-bottom 159



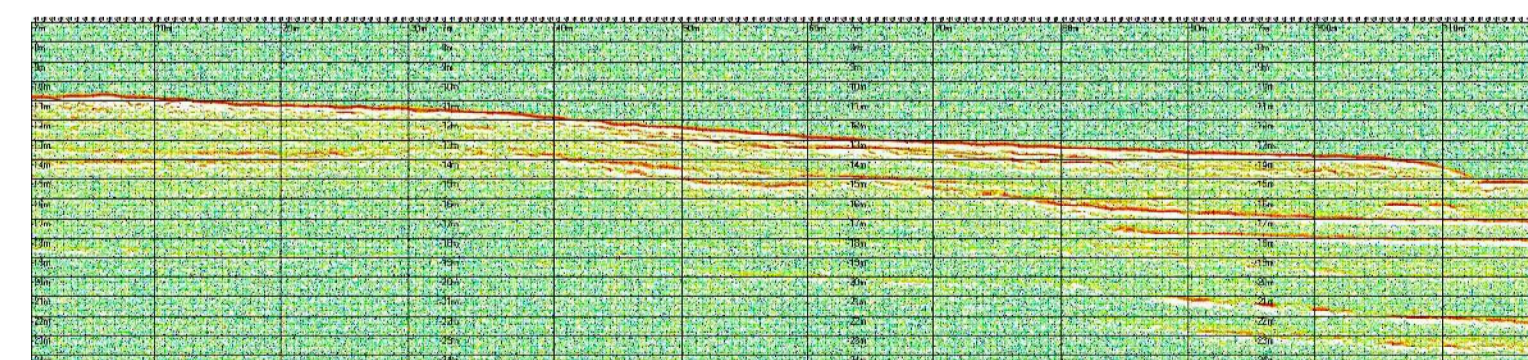
profilo sub-bottom 160



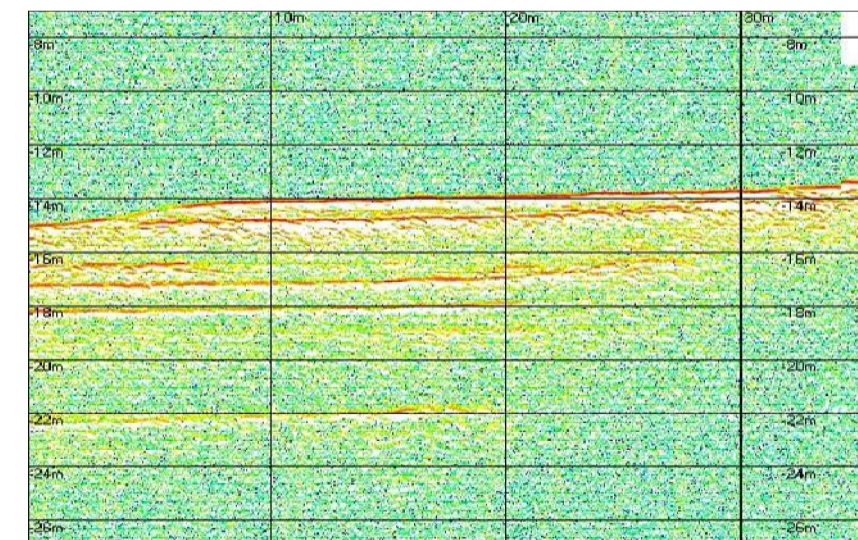
profilo sub-bottom 161



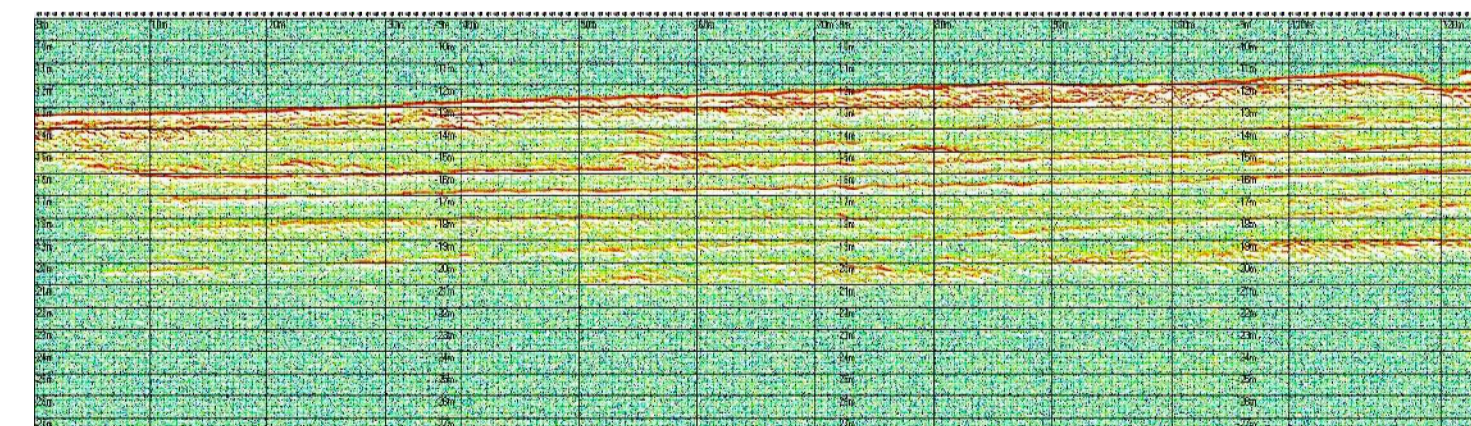
profilo sub-bottom 162



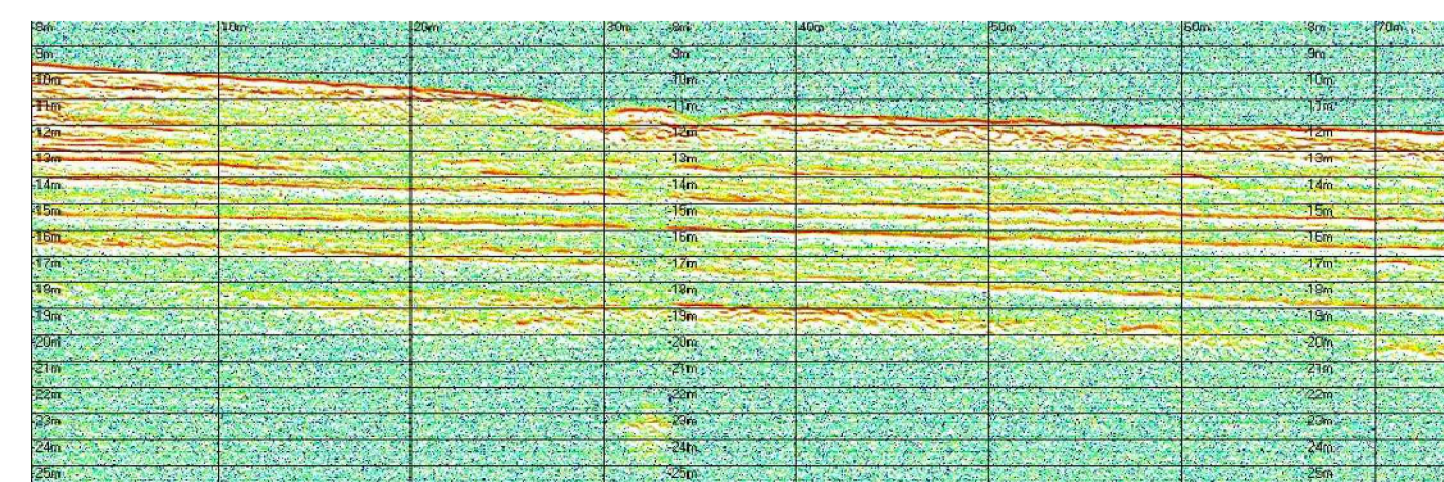
profilo sub-bottom 163



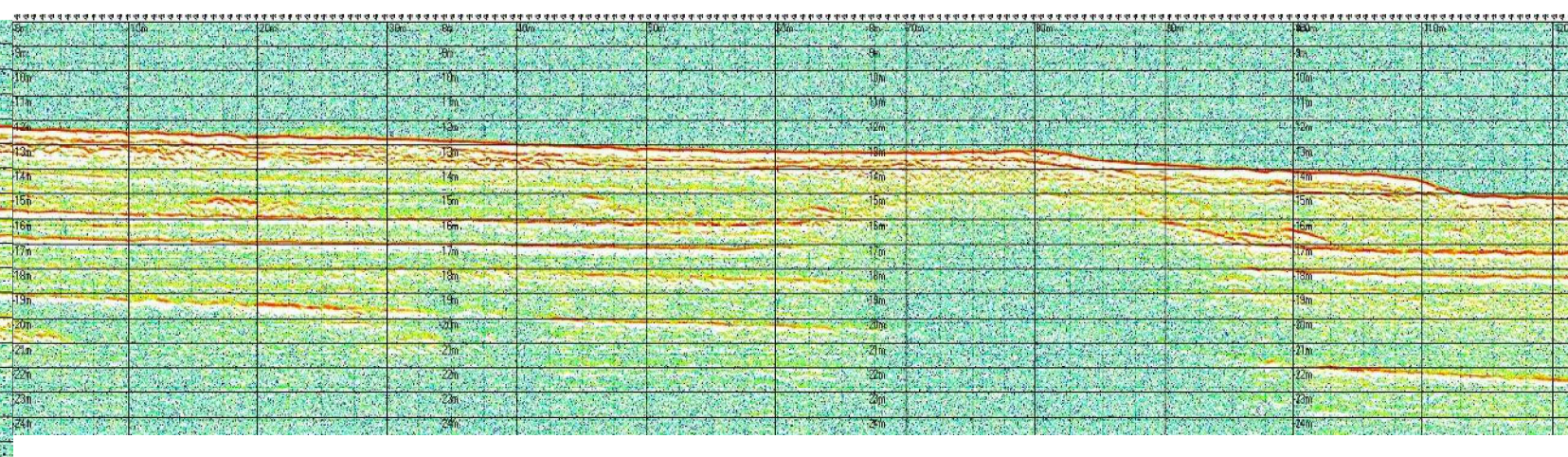
profilo sub-bottom 164



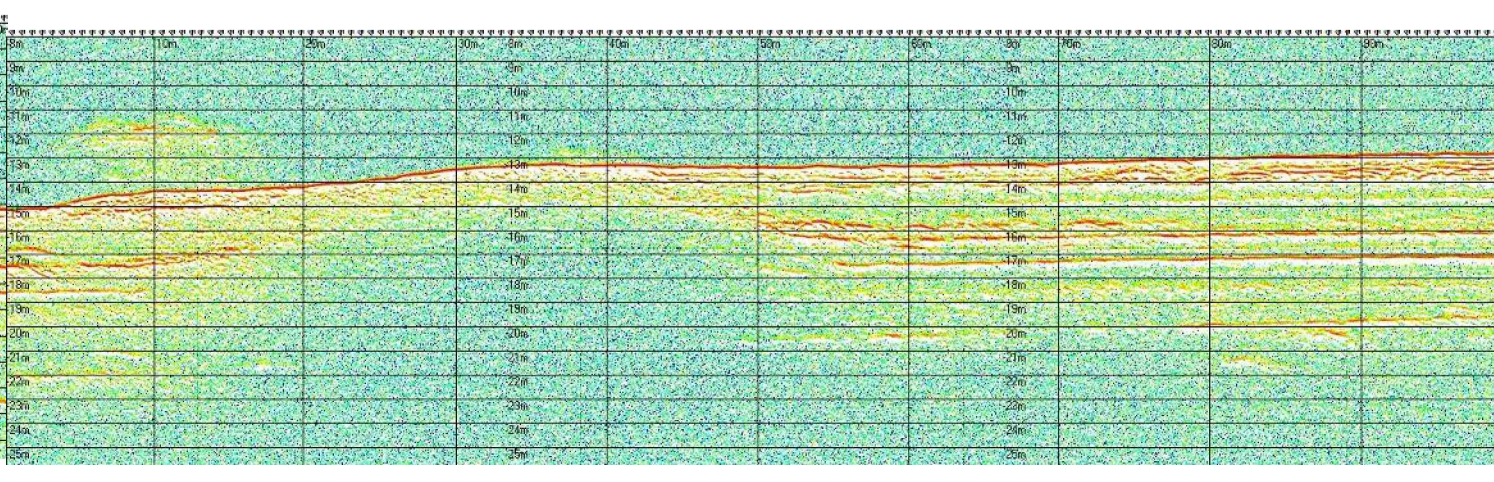
profilo sub-bottom 165



profilo sub-bottom 166



profilo sub-bottom 167



Autorità Portuale di Augusta

LAVORI DEL PRIMO STRALCIO E DEL SECONDO STRALCIO DELLA TERZA FASE DEL PORTO COMMERCIALE DI AUGUSTA - BANCHINE CONTAINERS -

IMPRESE:



Condotte S.p.A. Fondata il 7 aprile 1980

PIACENTINI COSTRUZIONI



(MANDATARIA)

(MANDANTI)

PROGETTO ESECUTIVO DI FUSIONE ED INTEGRAZIONE DEL I E II STRALCIO

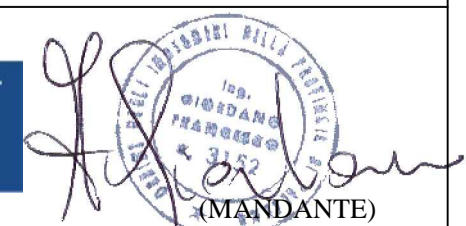
3						
2						
1						
0	081114	PRIMA EMISSIONE			P.PERCENTI	D.RIGIOLIOSO F.GIORDANO
REV.	DATA	EMISSIONE			RED.	VER. APPR.
1073	IG00	T	013	A	SCALA:	VARIE

TITOLO ELABORATO: INQUADRAMENTO GENERALE STUDI E RELAZIONI SPECIALISTICHE Rilievo Sub Bottom Profiler - profili - tav.8 di 9

PROGETTAZIONE:



(MANDATARIA)



RESPONSABILE DEL PROCEDIMENTO: Geom. Venerando Toscano