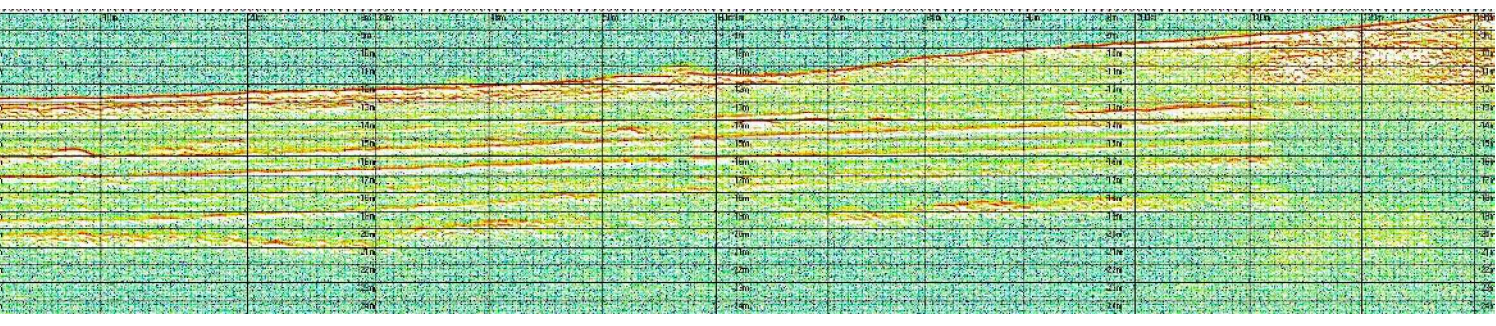
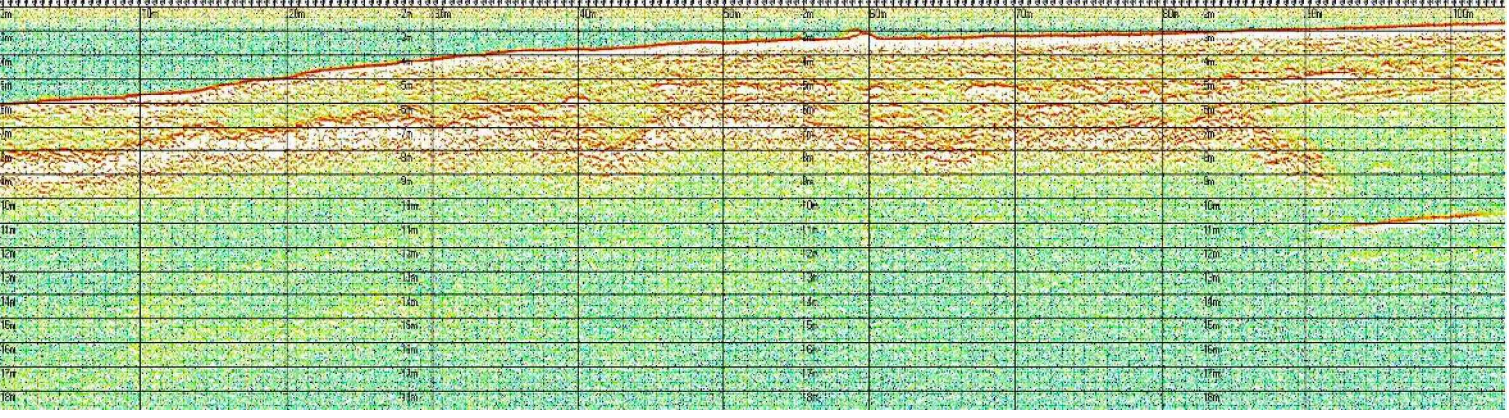


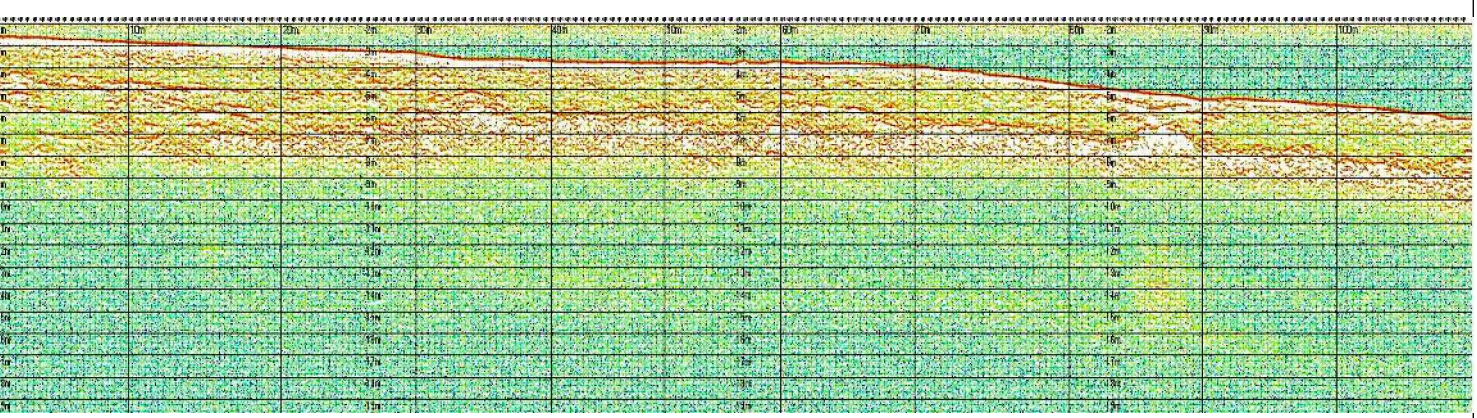
profilo sub-bottom 168



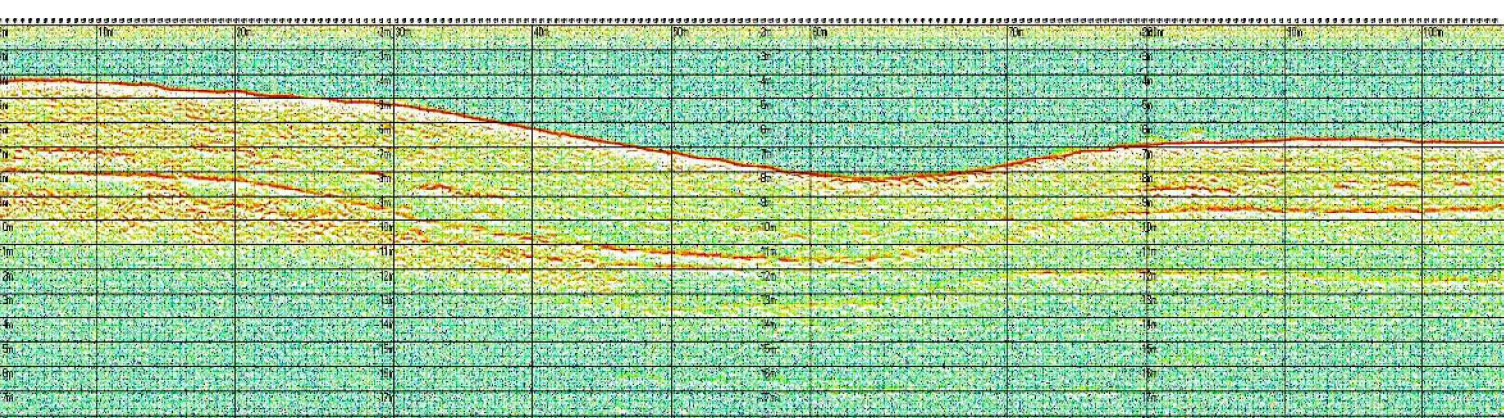
profilo sub-bottom 169



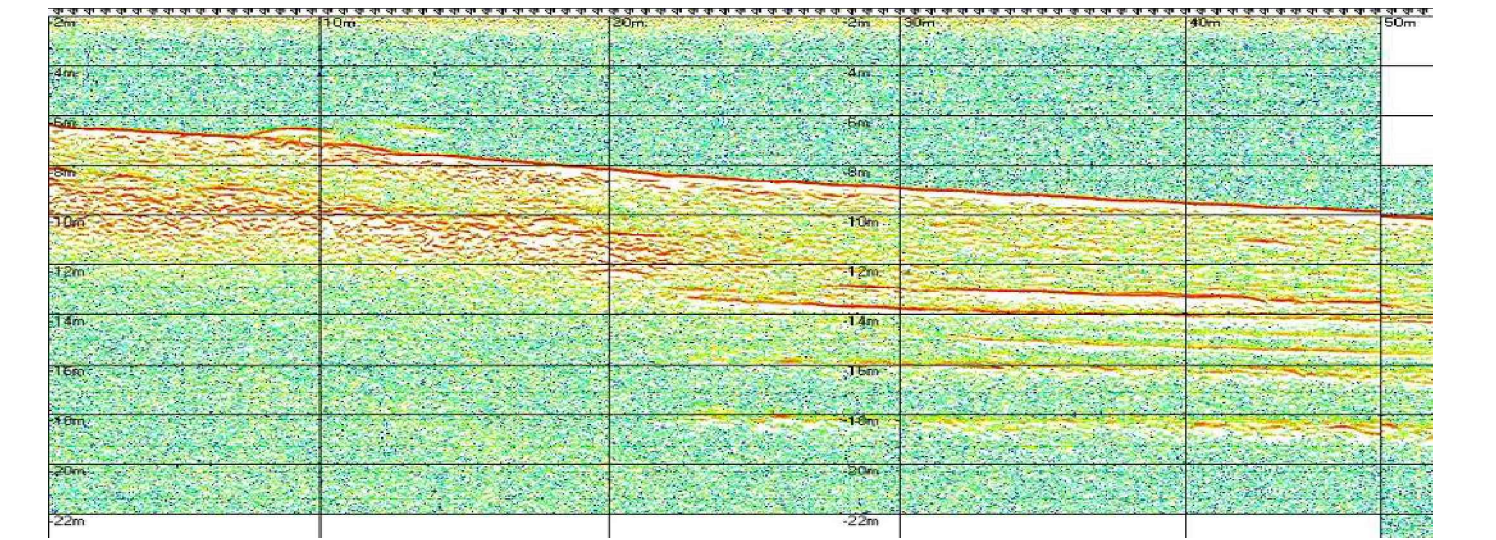
profilo sub-bottom 170



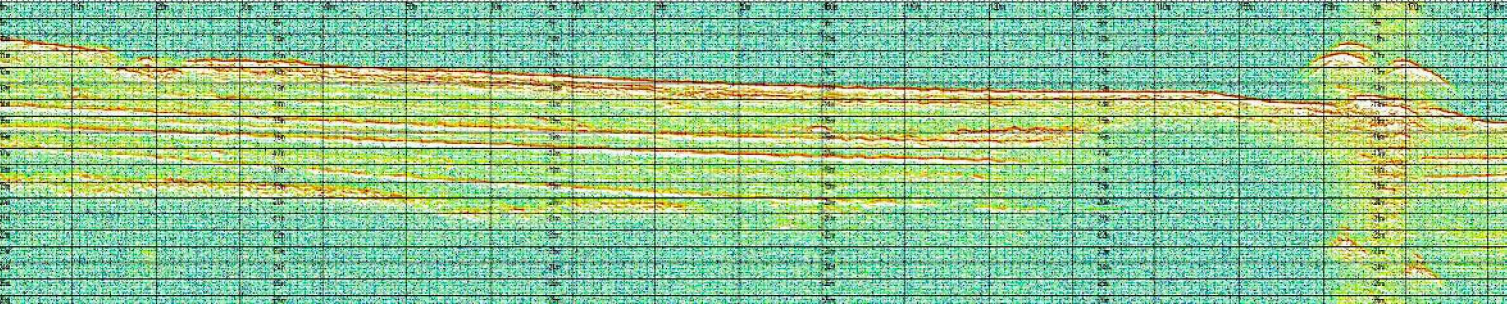
profilo sub-bottom 171



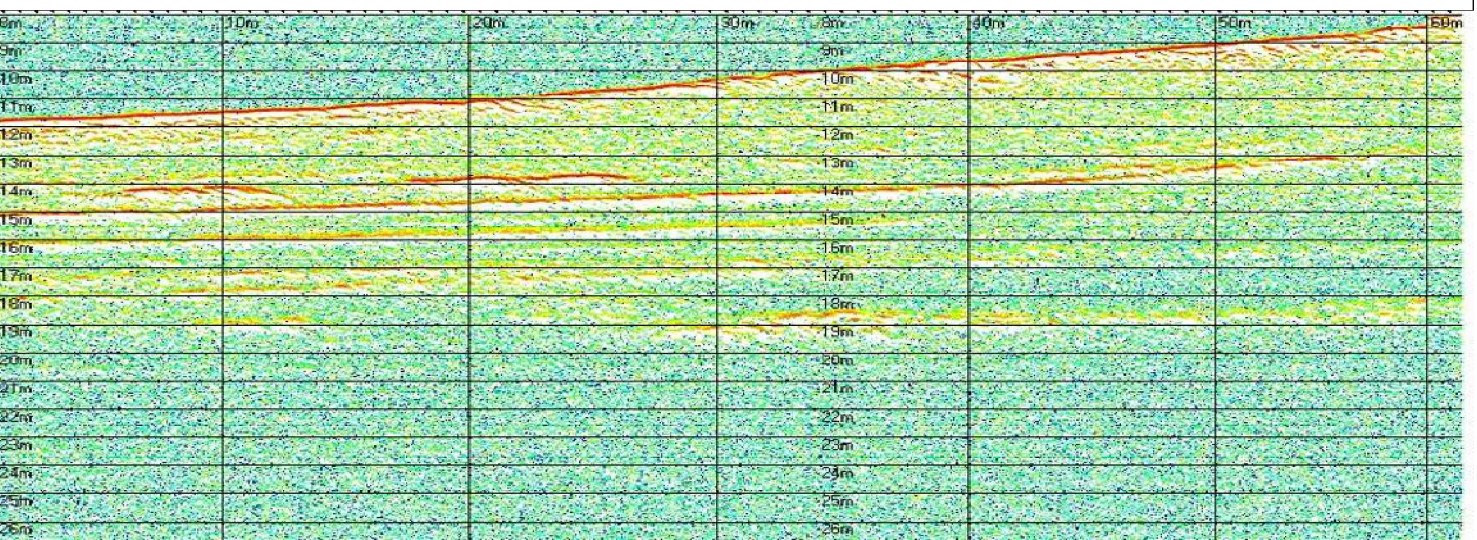
profilo sub-bottom 172



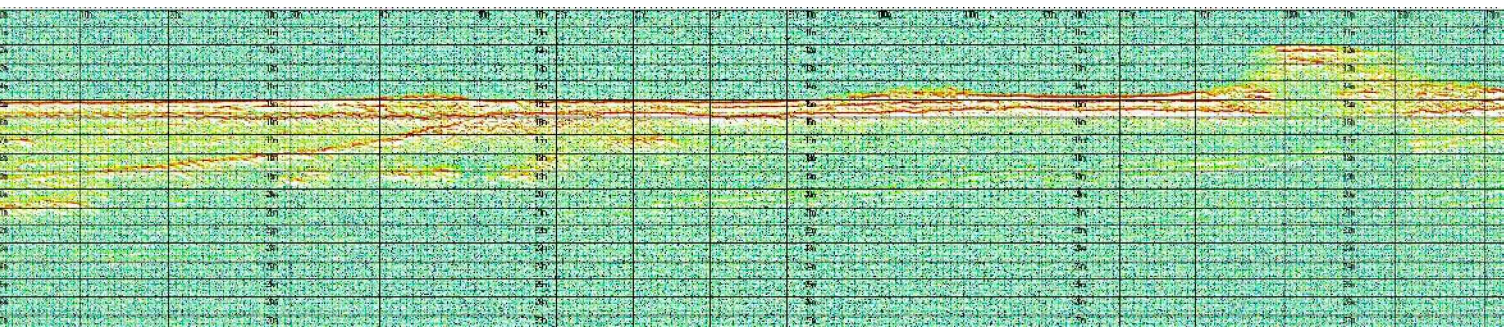
profilo sub-bottom 173



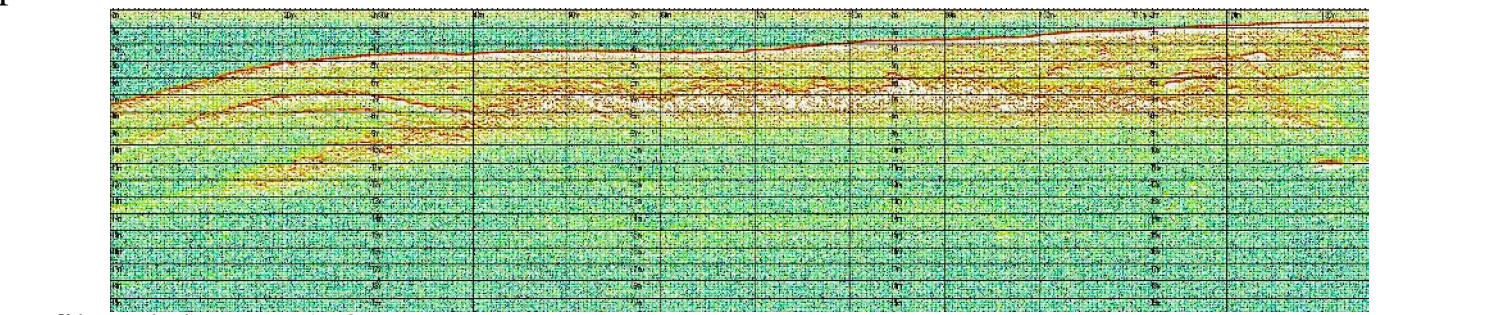
profilo sub-bottom 174



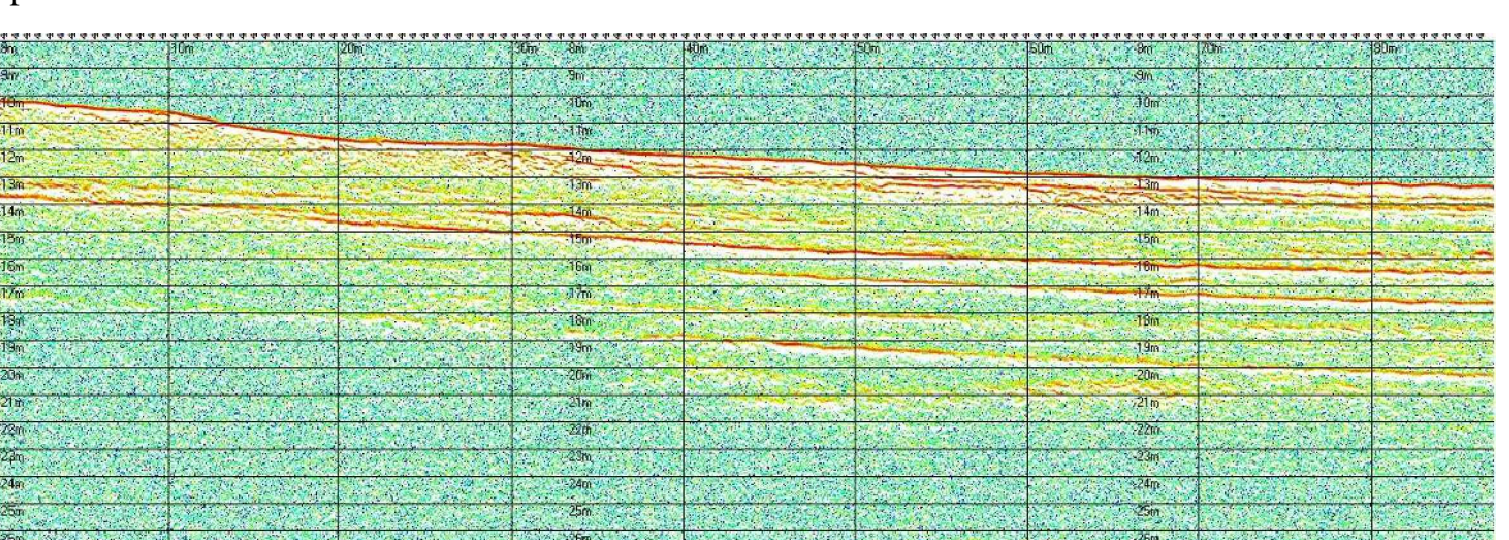
profilo sub-bottom 175



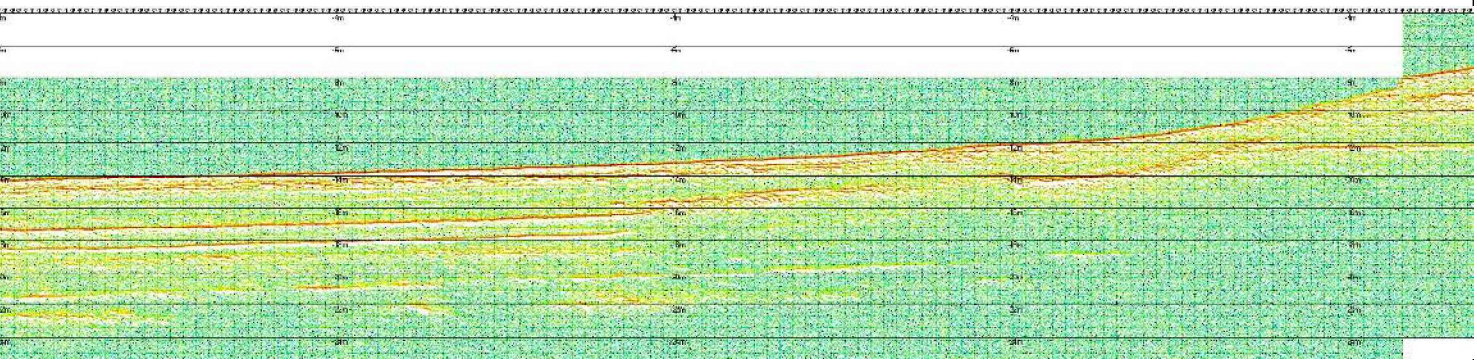
profilo sub-bottom 177



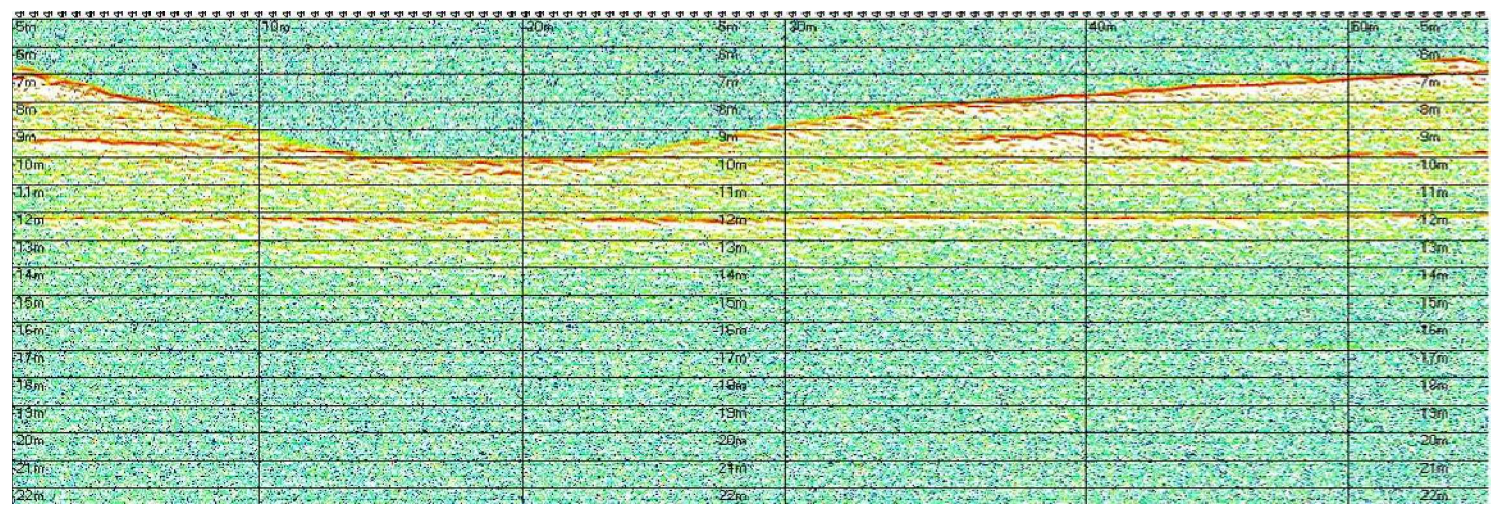
profilo sub-bottom 178



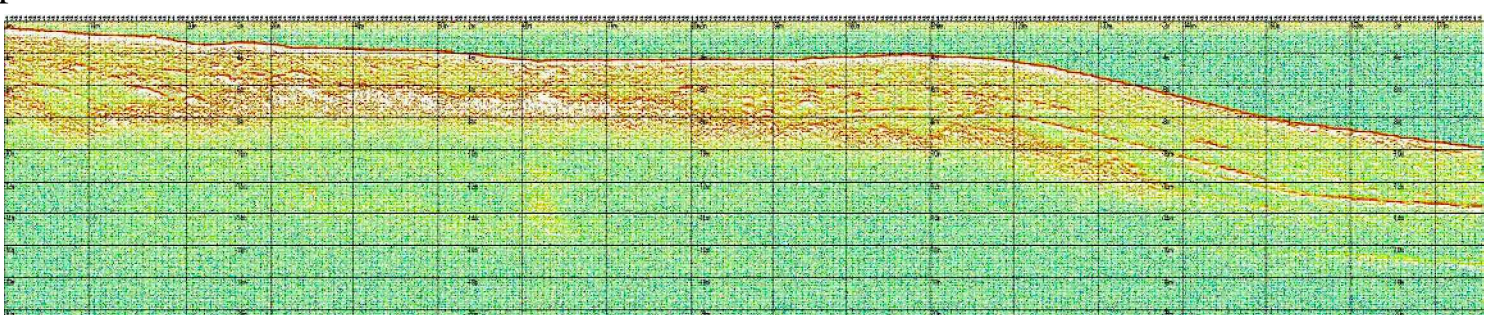
profilo sub-bottom 179



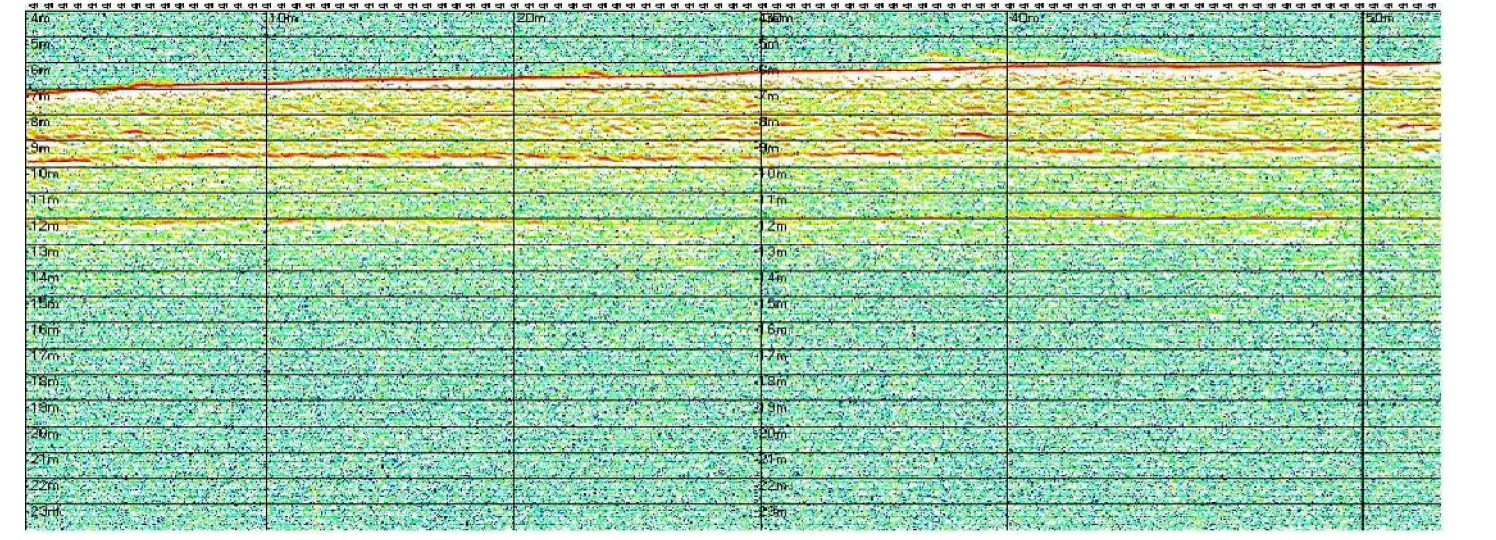
profilo sub-bottom 180



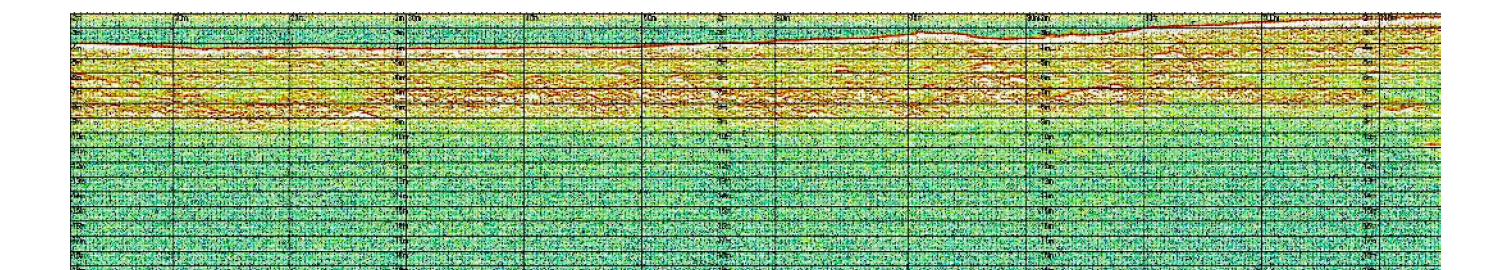
profilo sub-bottom 178



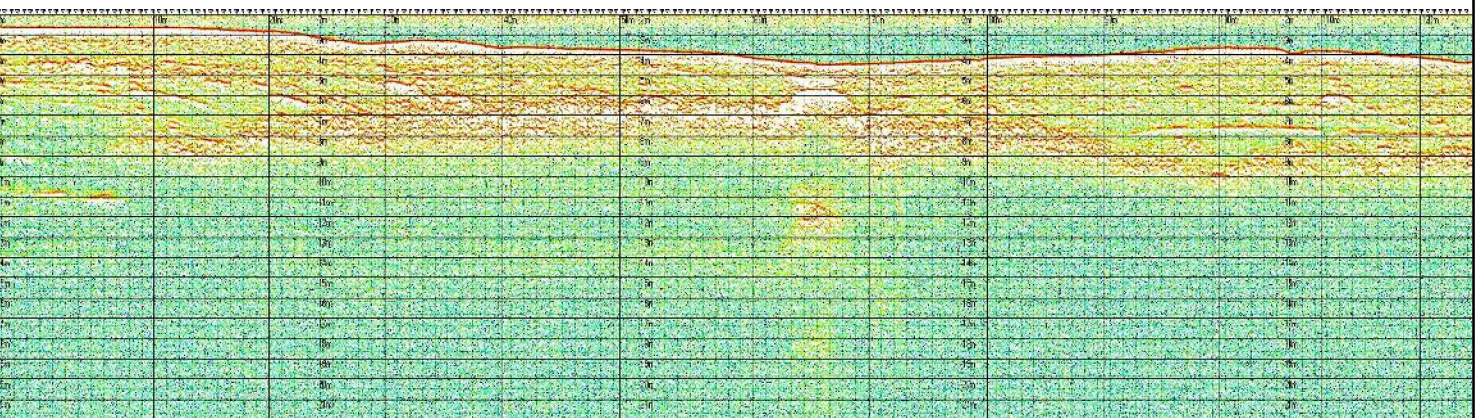
profilo sub-bottom 181



profilo sub-bottom 182



profilo sub-bottom 183



LAVORI DEL PRIMO STRALCIO E DEL SECONDO STRALCIO DELLA TERZA FASE DEL PORTO COMMERCIALE DI AUGUSTA - BANCHINE CONTAINERS -

Logos for Autorità Portuale di Augusta, Condotte S.p.A., Piacentini Costruzioni, and Cosedil spa.

PROGETTO ESECUTIVO DI FUSIONE ED INTEGRAZIONE DEL I E II STRALCIO

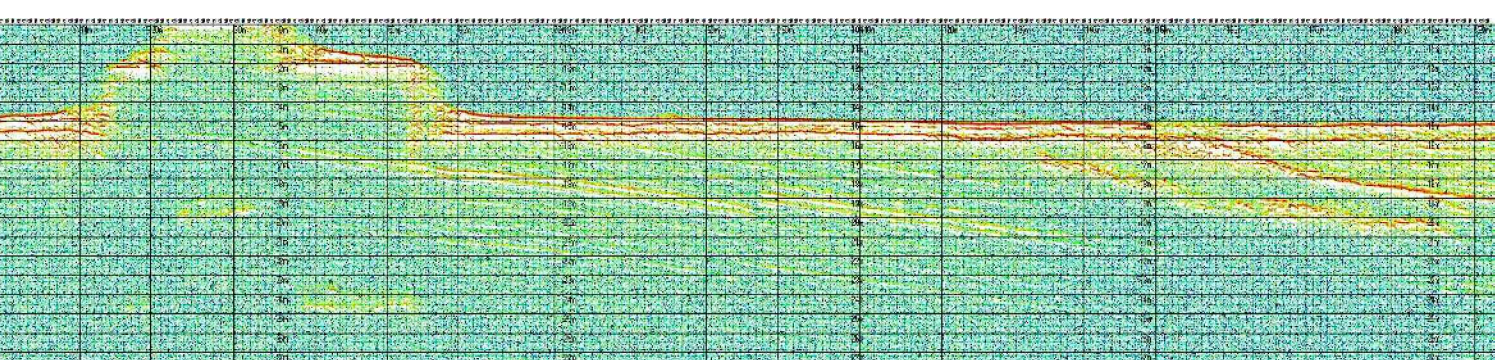
Revision table with columns for REV., DATA, EMISSIONE, TIPO ELAB., N° ELAB., REV., RED., VER., APPR. and a SCALA: VARIE field.

TITOLO ELABORATO: INQUADRAMENTO GENERALE STUDI E RELAZIONI SPECIALISTICHE Rilievo Sub Bottom Profiler - profili - tav.9 di 9

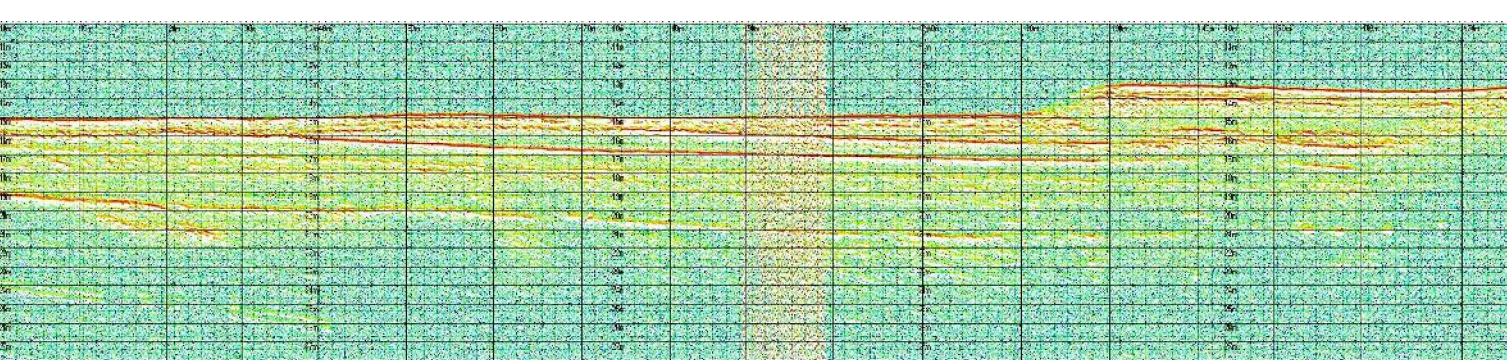
Logos for INCO, Ordine Ingegneri Roma, and Sigma Ingegneria s.r.l.

RESPONSABILE DEL PROCEDIMENTO: Geom. Venerando Toscano

profilo sub-bottom 188



profilo sub-bottom 189



profilo sub-bottom 190

