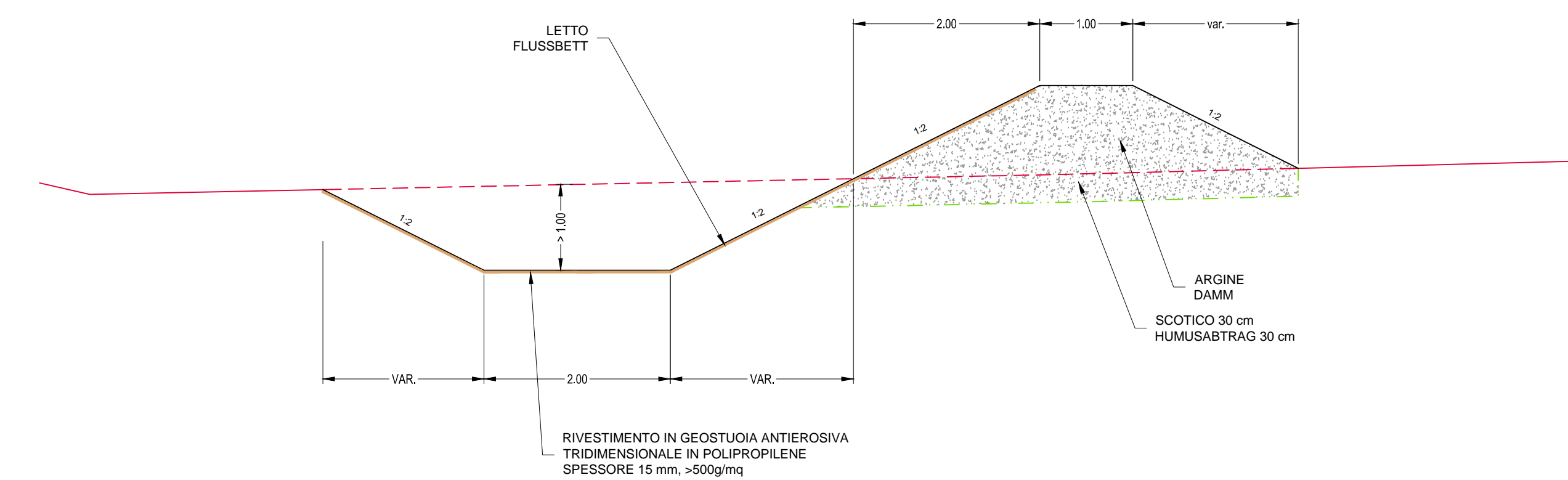


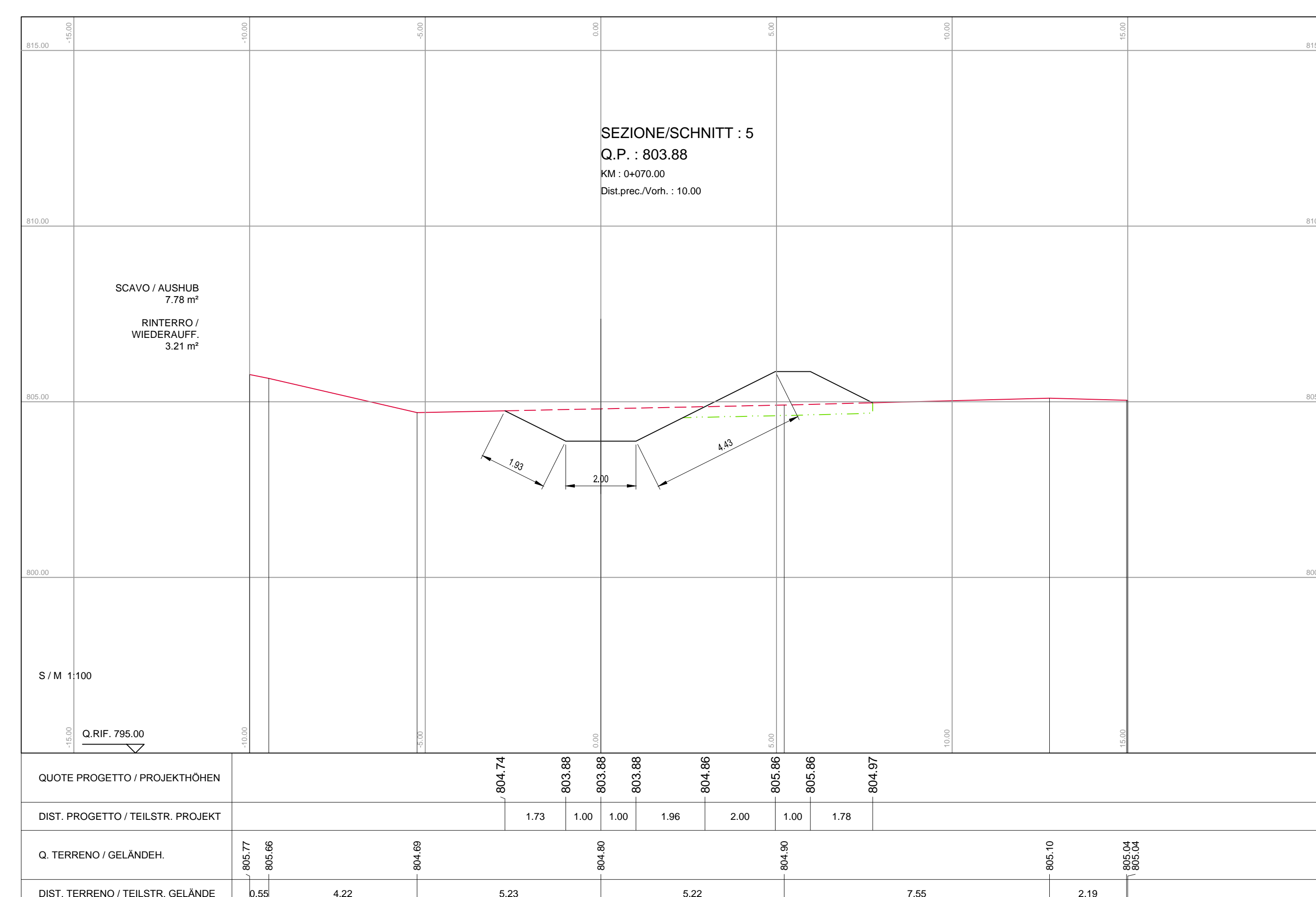
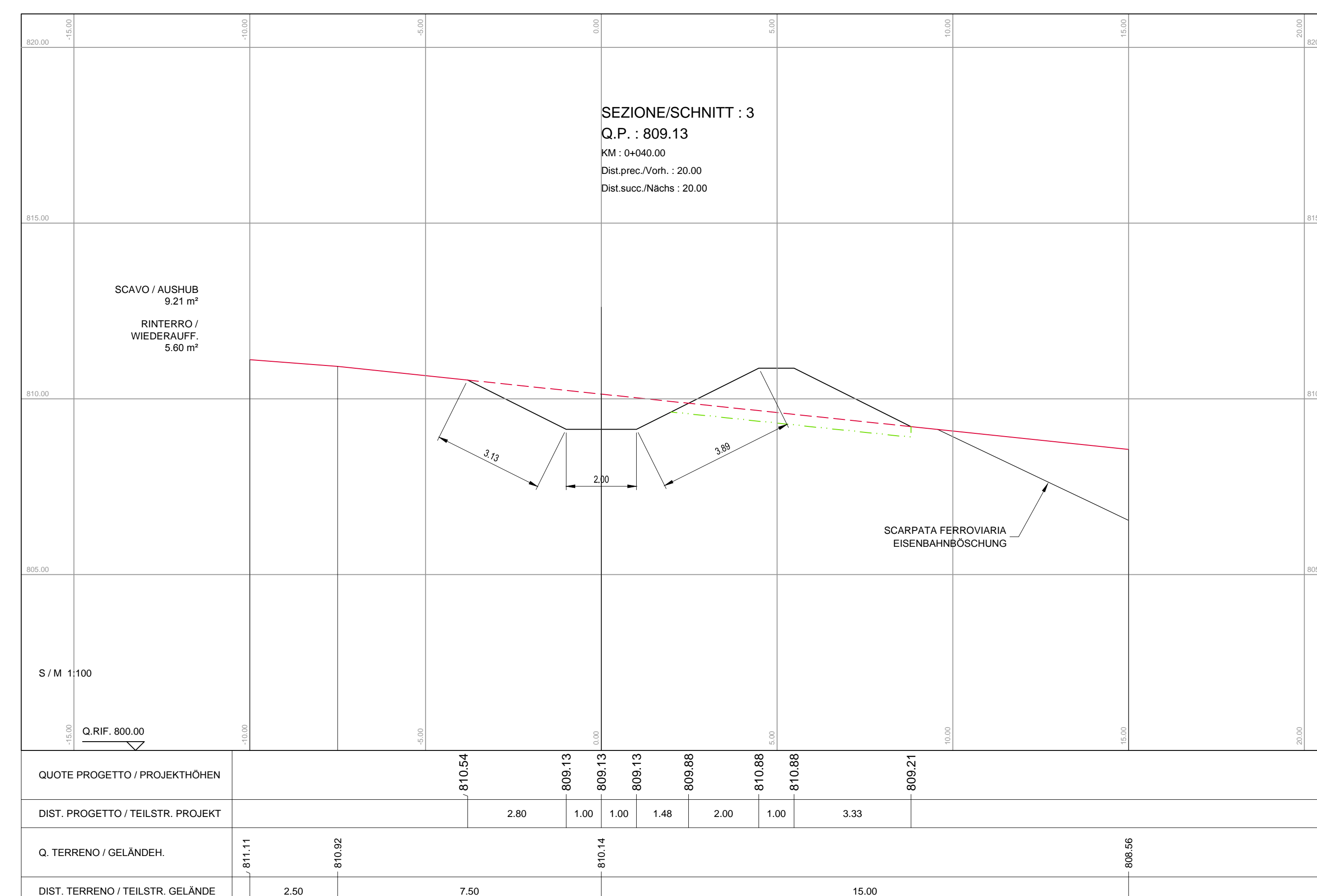
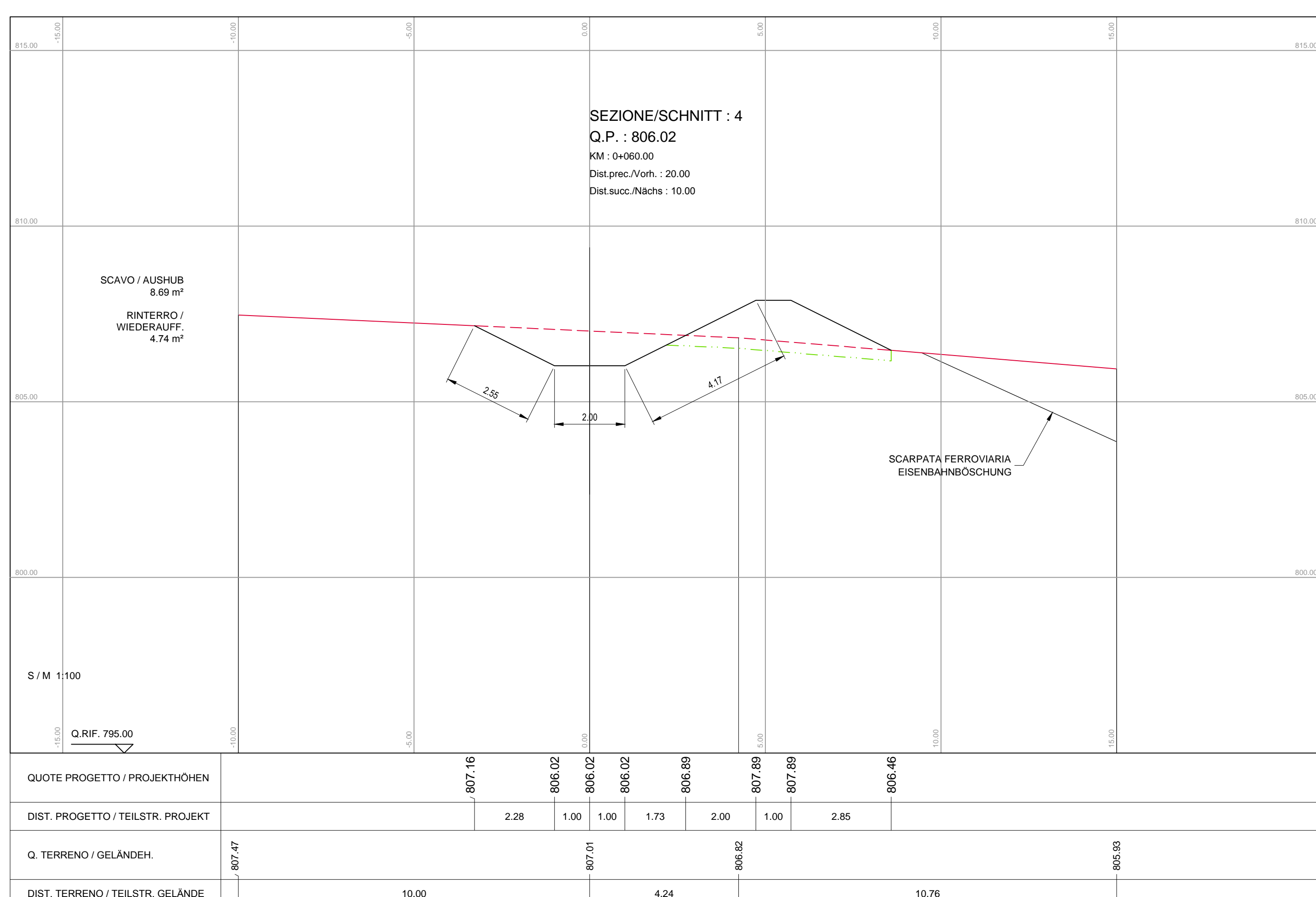
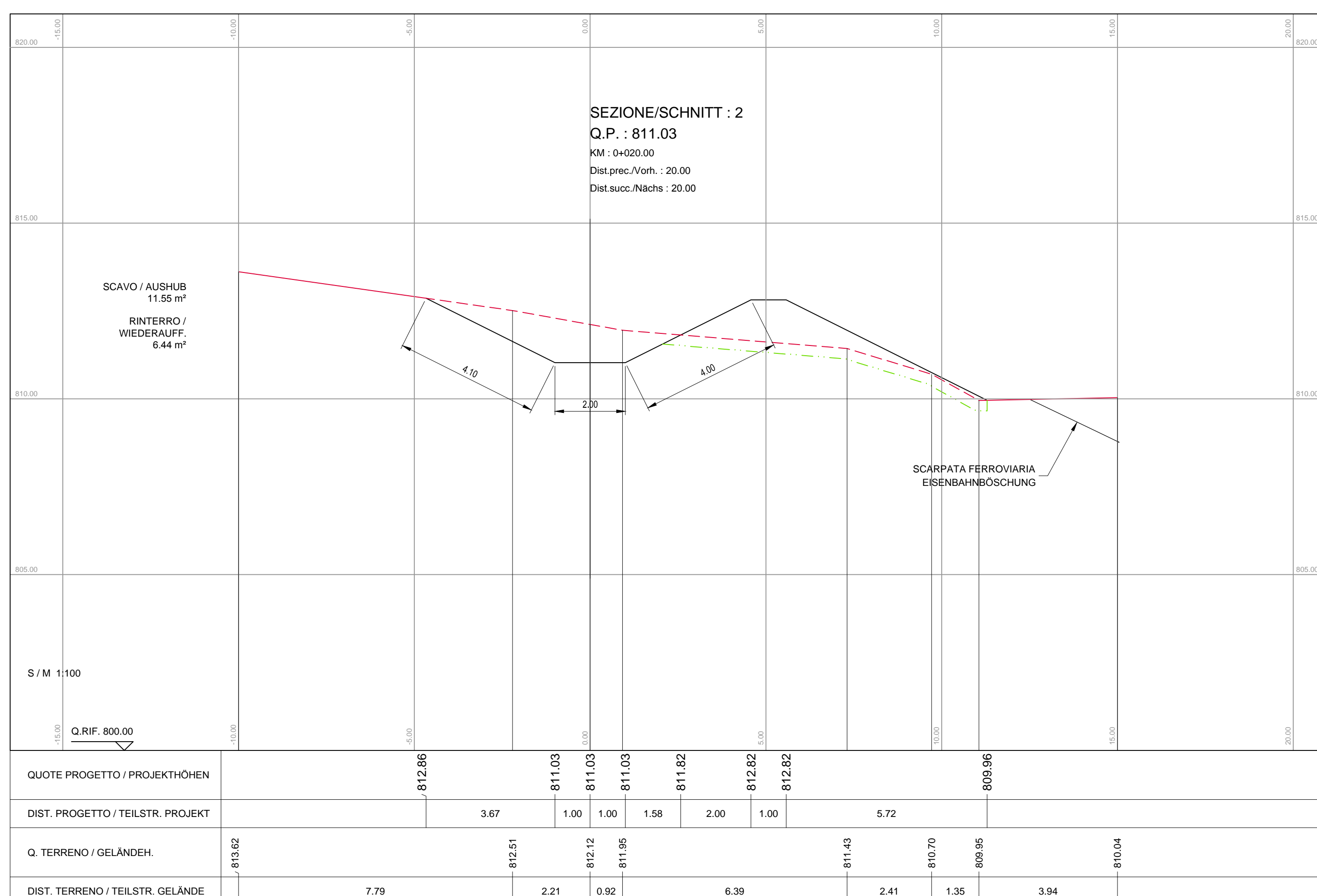
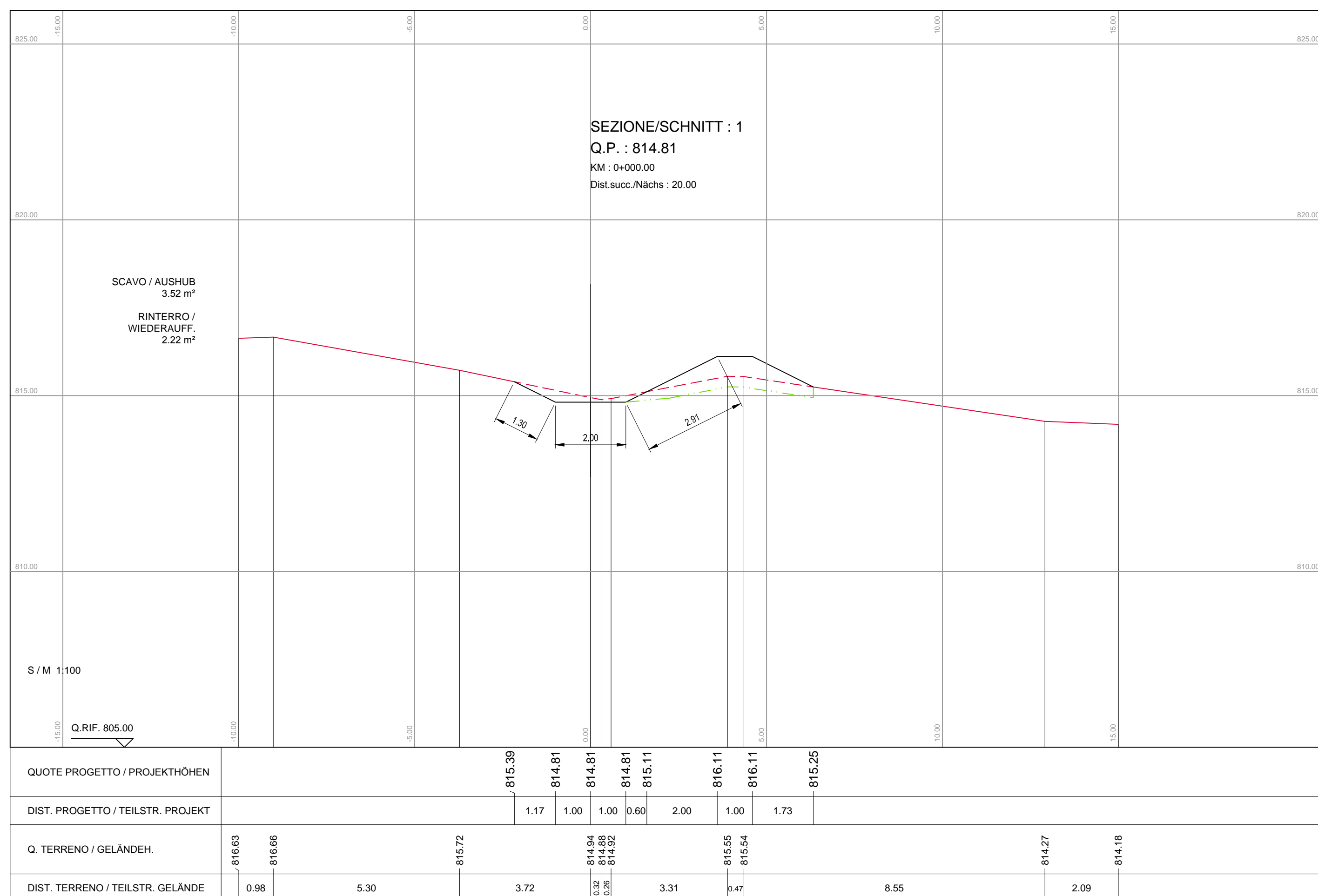
SEZIONE TIPO
REGELQUERSCHNITT

scala/Masstab 1:50

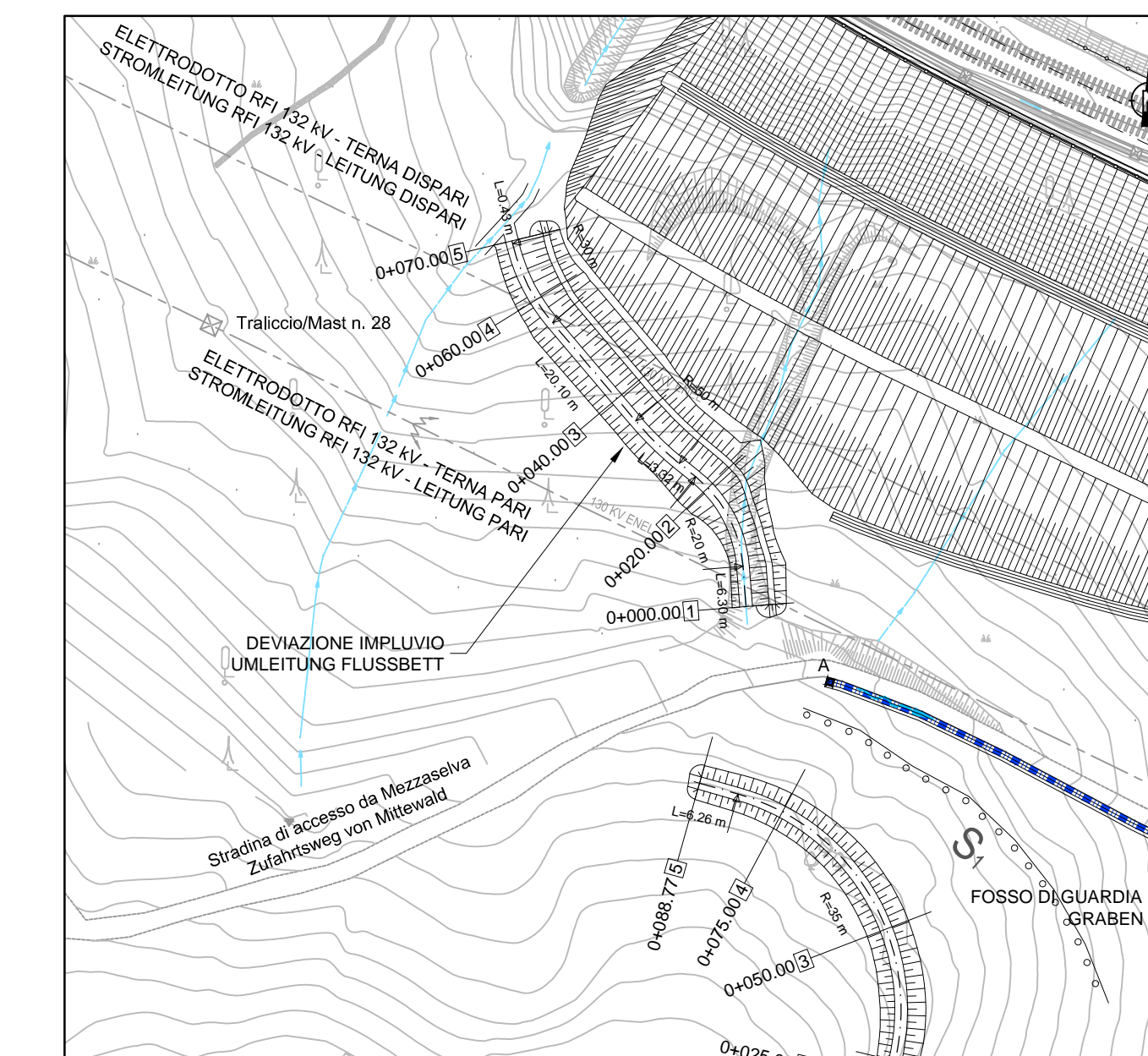


SEZIONI TRASVERSALI
QUERSCHNITTE

scala/Masstab 1:100



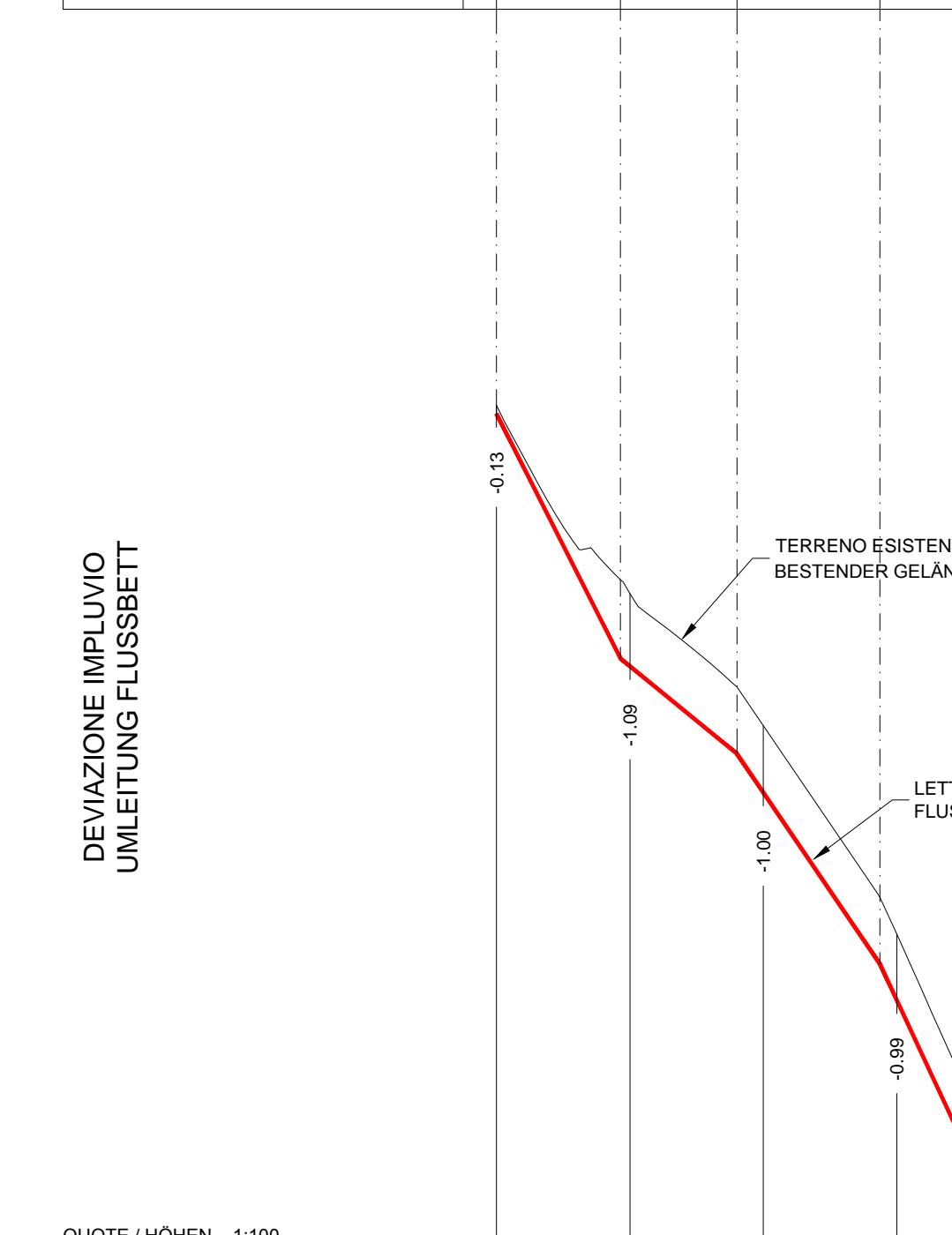
STRALCIO PLANIMETRICO
LAGEPLANAUSZUG



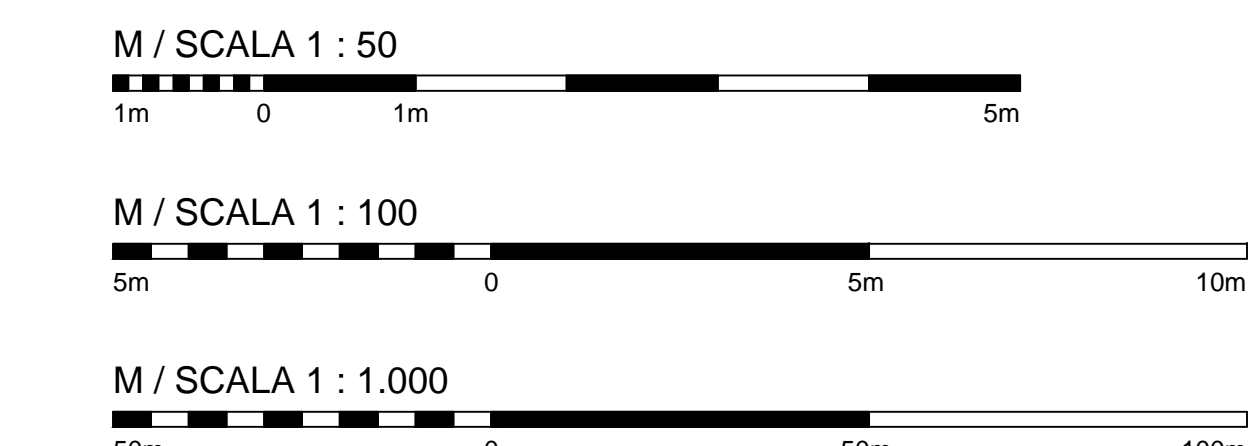
PROFILO LONGITUDINALE
LÄNGENSCHNITT

scala/Masstab 1:1.000/100

LIVELLETTEN	DIFF. DI QUOTA / HÖHENUNTERSCHEID	DIFF. DI QUOTA / HÖHENUNTERSCHEID	DIFF. DI QUOTA / HÖHENUNTERSCHEID	DIFF. DI QUOTA / HÖHENUNTERSCHEID	DIFF. DI QUOTA / HÖHENUNTERSCHEID
1	h = -3.67	h = -1.43	h = -3.15	h = -2.65	
2	L = 18.57	L = 17.48	L = 21.45	L = 12.52	
3	i = -19.74%	i = -8.18%	i = -14.71%	i = -21.46%	



NUMERO SEZIONI SCINTILLAMMER	1	2	3	4	5
DISTANZE PARZIALI TEILSTRECKE	20.00	20.00	20.00	10.00	
DISTANZE PROGRESSIVE STATION	0+000.00	0+020.00	0+040.00	0+060.00	0+070.00
QUOTE TERRENO (Q.T.) GELÄNDEHÖHEN	814.42	812.12	810.14	810.71	810.95
QUOTE PROGETTO (Q.P.) PROJEKTHÖHEN	814.61	811.03	809.14	806.02	803.88
DIFFERENZA DI QUOTA (Q.P.-Q.T.) HÖHENUNTERSCHIED	-0.19	-1.09	-1.00	-0.89	-0.82
ETOMETRICHE/HEFTOMETRIERUNG					
ANDAMENTO PLANIMETRICO KURVENBAND	L=6.50	L=3.32	R=20.00	L=20.10	R=20.00



Bearbeitungsstand
Stato di elaborazione

Revision	Änderungen / Modifiche	Verantwortlicher / Verantwortliche	Datum / Data
00	Entwurf / Prima Versione	D. Azzaroli	06.08.2015
01	Anmerkungen BBT vom 15.12.2015 / Osservazioni BBT del 15.12.2015	D. Azzaroli	14.01.2016
02			
03			
04			
05			

Ausbau Eisenbahnstrecke München-Verona
BRENNER BASISTUNNEL
Ausführungsprojekt

Potenziamento asse ferroviario Monaco - Verona
GALLERIA DI BASE DEL BRENNERO
Progetto esecutivo

Sub-Bauleos Hauptbauwerke Eisackunterquerung
Sublotto di costruzione Opere Principali Sottotraversamento Isarco

Fachbereich: 08 - Spostamento linea storica
Thema: Projektazione del tracciato e dell'opera
Dokumententyp: Sezione trasversale / Sezione tipo
Titel: Opere a difesa della ferrovia: Deviazione impletivo

14.01.2016

14.01.2016

14.01.2016

1:100

02 H71 AF 002 08 01 066.00 B0115 00780 3B1 01