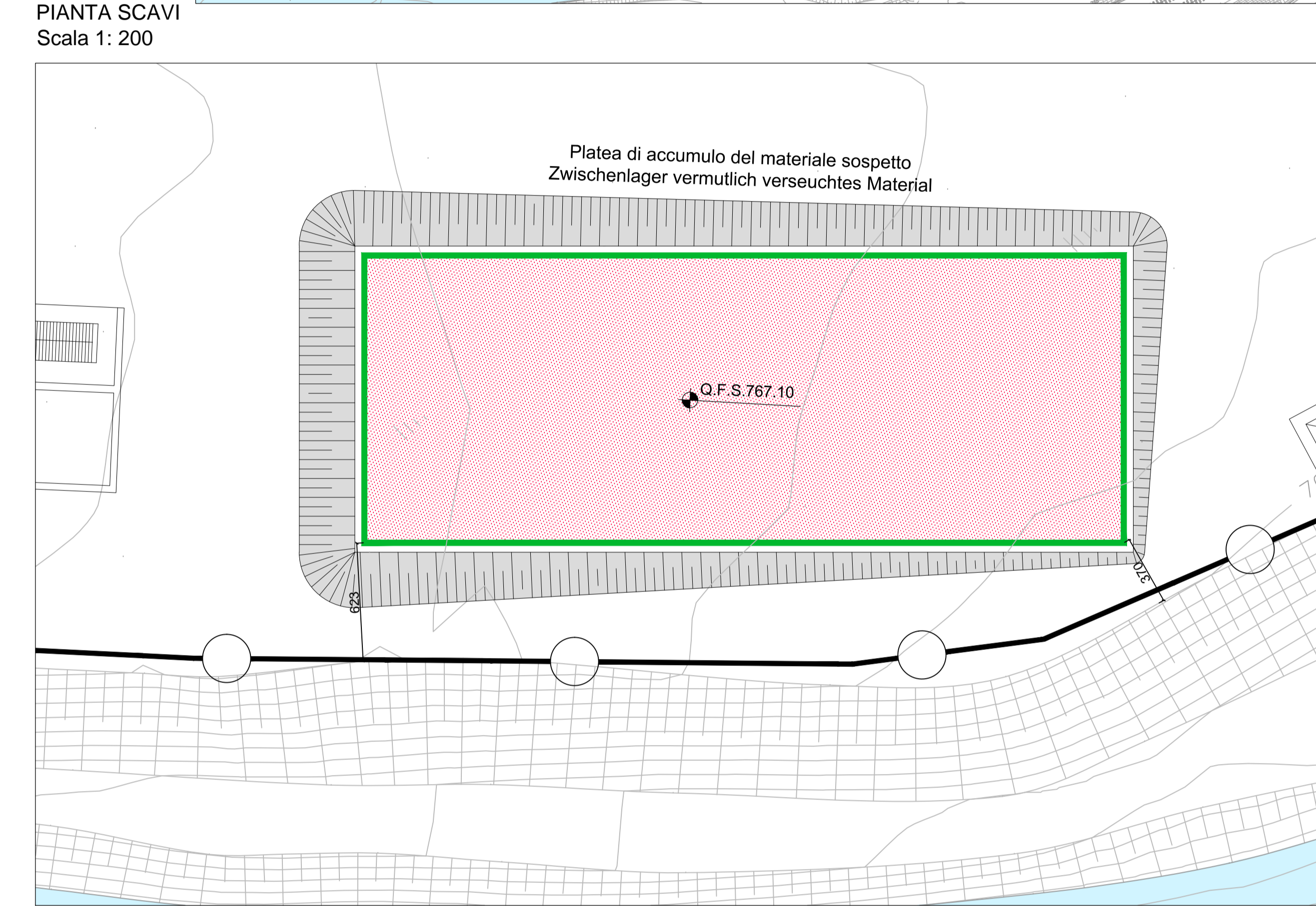
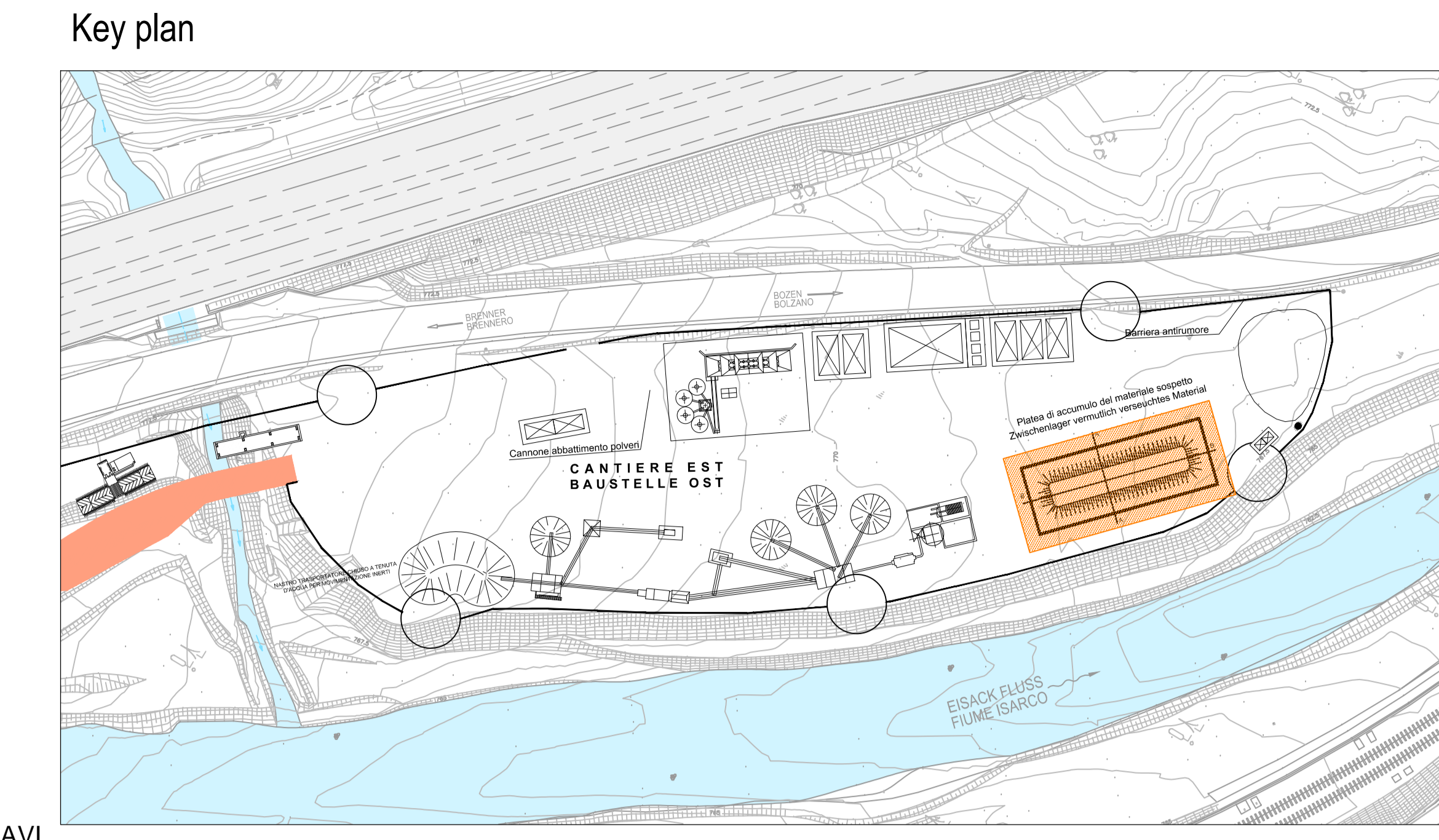


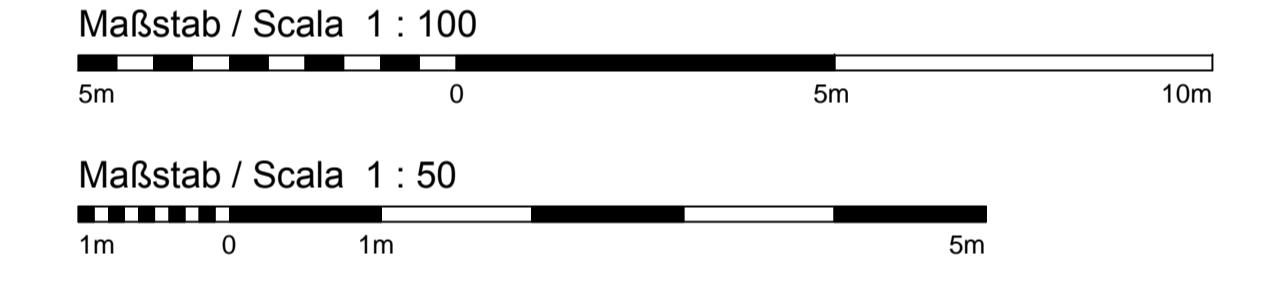
### TABELLA FERRI

Pos.	Ø (mm)	nb	L (m)	Ltot (m)	Peso/mi (kg)	Peso tot (kg)
1	10	200	5.85	1170	0.617	721.89
1a	10	4	5.95	23.80	0.617	14.68
1b	10	4	5.95	23.80	0.617	14.68
2	10	200	5.40	1080	0.617	666.36
2a	10	4	5.40	21.60	0.617	13.33
2b	10	4	5.40	21.60	0.617	13.33
3	10	200	5.85	1170	0.617	721.89
3a	10	4	5.95	23.80	0.617	14.68
3b	10	4	5.95	23.80	0.617	14.68
4	10	200	6.05	1210	0.617	746.57
4a	10	4	5.95	23.80	0.617	14.68
4b	10	4	5.95	23.80	0.617	14.68
5	10	200	5.40	1080	0.617	666.36
5a	10	4	5.40	21.60	0.617	13.33
5b	10	4	5.40	21.60	0.617	13.33
6	10	200	6.05	1210	0.617	746.57
6a	10	4	5.95	23.80	0.617	14.68
6b	10	4	5.95	23.80	0.617	14.68
7	10	75	5.85	1170	0.617	721.89
7a	10	4	5.95	23.80	0.617	14.68
7b	10	4	5.95	23.80	0.617	14.68
8	10	75	11.2	840	0.617	518.28
8a	10	4	11.2	44.8	0.617	27.64
8b	10	4	11.2	44.8	0.617	27.64
9	10	75	12.0	900.0	0.617	555.30
9a	10	4	12.0	48.0	0.617	29.62
9b	10	4	12.0	48.0	0.617	29.62
10	10	75	11.2	840	0.617	518.28
10a	10	4	11.2	44.8	0.617	27.64
10b	10	4	11.2	44.8	0.617	27.64
11	10	75	5.85	436.75	0.617	270.71
11a	10	4	5.95	23.80	0.617	14.68
11b	10	4	5.95	23.80	0.617	14.68
12	10	75	6.05	453.75	0.617	279.96
12a	10	4	5.95	23.80	0.617	14.68
12b	10	4	5.95	23.80	0.617	14.68
13	10	75	11.2	840	0.617	518.28
13a	10	4	11.2	44.8	0.617	27.64
13b	10	4	11.2	44.8	0.617	27.64
14	10	75	12.0	900.0	0.617	555.30
14a	10	4	12.0	48.0	0.617	29.62
14b	10	4	12.0	48.0	0.617	29.62
15	10	75	11.2	840	0.617	518.28
15a	10	4	11.2	44.8	0.617	27.64
15b	10	4	11.2	44.8	0.617	27.64
16	10	75	1.30	97.5	0.888	86.58
16a	10	4	1.30	5.20	0.617	3.21
16b	10	4	1.30	5.20	0.617	3.21
17	12	200	1.30	260.0	0.888	230.88
18	12	200	1.30	260.0	0.888	230.88
19	12	200	1.30	260.0	0.888	230.88
20	12	200	1.30	260.0	0.888	230.88
21	12	75	1.30	97.5	0.888	86.58
22	12	75	1.30	97.5	0.888	86.58
23	12	75	1.30	97.5	0.888	86.58
24	12	75	1.30	97.5	0.888	86.58
25	10	1200	var (0,80-0,90)	993	0.617	612.70
					Kg FERRO	11186.92
					mc CLS	160.98
					INCIDENZA/mc	61.80



### LEGENDA / LEGENDA

Sagoma magrone fondazione  
 Sagoma magrone fondazione  
 Q.F.S. Quota di fondo scavo  
 Quota di fondo scavo



### Bearbeitungsstand

#### Stato di elaborazione

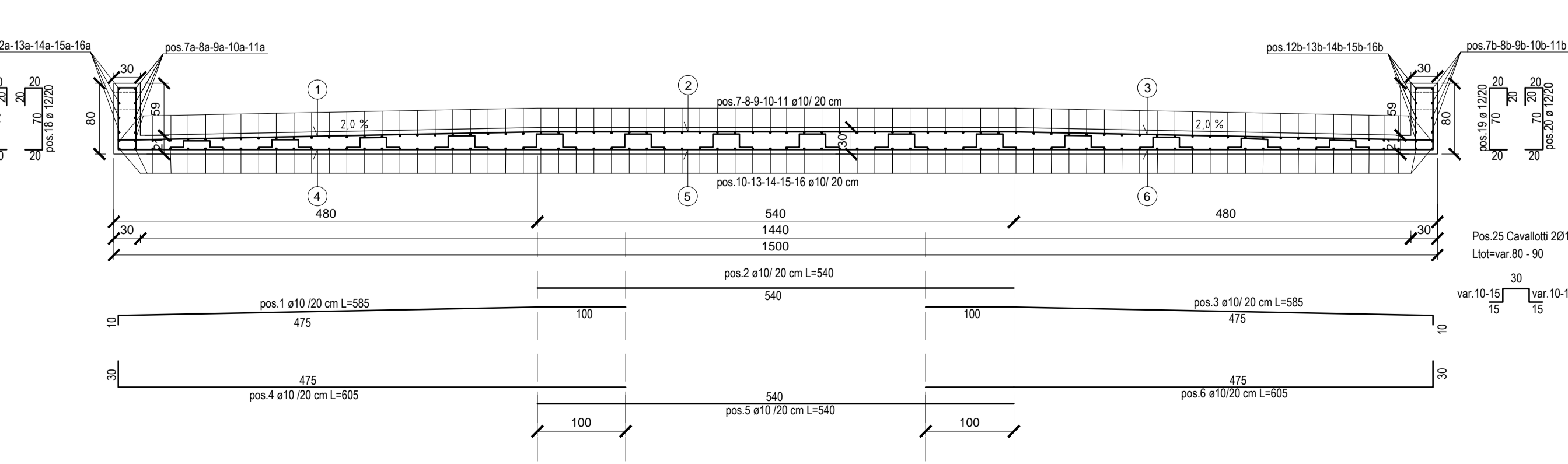
Revisione	Modifiche	Verantwortliche Änderung	Datum
00	Estimazione / Firma / Verisione	N. Tappein	08.08.2015
01	Anmerkungen BBT/Oberrhein/BBT	N. Tappein	30.11.2015
02	Anmerkungen BBT vom 15.12.2015 / Oberrhein/BBT vom 15.12.2015	N. Tappein	14.01.2016
03			
04			
05			

### CARATTERISTICHE DEI MATERIALI BAUMATERIAL-MERKMALE

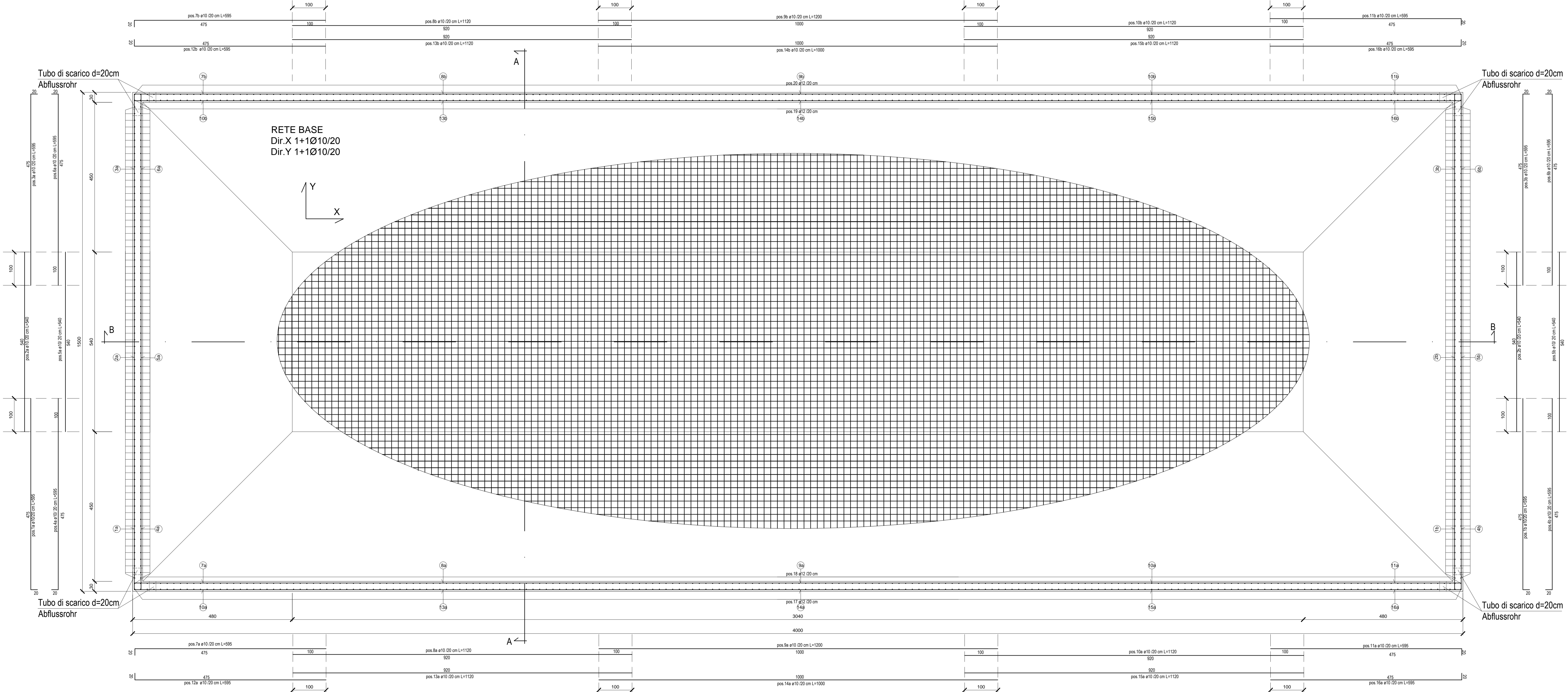
	MAGRONE	PLATEA DI FONDAZIONE	MUR
Magrone	MAGRONE	PLATEA DI FONDAZIONE	MUR
Classe di esposizione	-	C 12/15	C 25/30
A/C max	-	-	0.60
W/B max	-	-	0.80
Spessore	-	53	53
Caratteristiche	325	425	425
Dimensione max	-	25 mm	25 mm
ACCIAIO TIPO	-	B 450 C	B 450 C
Stato	-	-	-
Articolo	-	-	-

NOTE: LE SOVRAPPORZIONI CHE NON SPECIFICATE, DEVONO ESSERE MINIMO 50 DIAMETRI

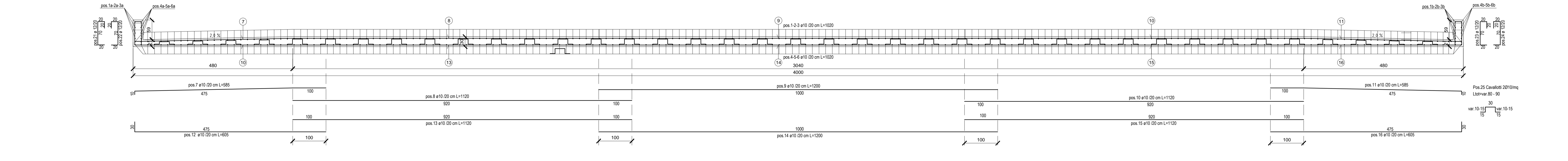
### Armature - Sezione A-A Scala 1:50



### Armatura Platea Scala 1:50



### Armature - Sezione B-B Scala 1:50



10 - Baugistik  
 10 - Logistica di cantiere

Baustelleneinrichtung  
 Area di cantiere

Bewehrung  
 Armature

Sammelplatte für potentiell verwehtes Material - Grundriss, Schritte und Bewehrung  
 Platea di accumulo del materiale potenzialm. contaminato - Pianta, sezioni e armature

Sub-Bauros Hauptbauwerke Eisackunterquerung  
 Sublotto di costruzione Opere Principali Sottotraversamento Isarco

Proj. von / da: 04/05/10  
 Entwurf / gezeichnet: 04/05/10  
 Bearb. / gezeichnet: 04/05/10  
 02 H71 AF 002 10 02 015.00 B0115 00587 720 02