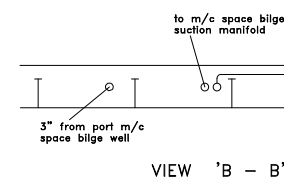
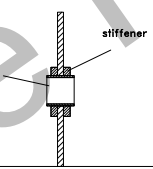


Capacity of bilge and ballast pumps according to the ballast piping arrangement filed with No.PPVT-3017
 - Bilge pump B = 125 m3/h
 - Ballast pump = 200 m3/h
 - General services pump = 125 m3/h

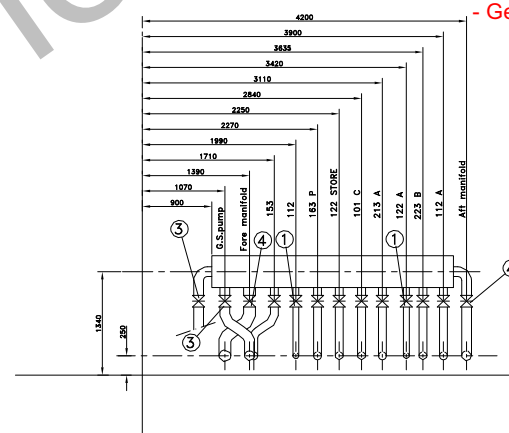
- 4" Swing Check Valve unless otherwise stated (item 2)
- 4" Butterfly Valve unless otherwise stated (item 6)
- All pipes are 4" diameter unless otherwise stated



VIEW 'B - B'



DETAIL 'A'



VIEW 'D - D'

Bilge manifold

SPECIFICATIONS:

ITEM	Qty	DESCRIPTION
1	11	Manual Butterfly Valve 3"
2	15	Manual Butterfly Valve 4"
3	2	Manual Butterfly Valve 5"
3m	1	SDNR Valve 5" (Screw Down Non Return)
4	1	Manual Butterfly Valve 6"
5	9	Swing check valve 3"
6	14	Swing Check valve 4"
7	5	Bilge Well 3"
8	10	Bilge Well 4"
9	6	Strum Box 3"
10	5	Strum Box 4"
11	3	S.D.N.R. Valve 3"
12	1	SW Strainer 5"
13	1	Gate Valve 5"
B	1	Pump Desmi SL 80/215

RINA Italy Plan Approval Centre

Approvato
Approved

In conformità ai vigenti Regolamenti del RINA
(In compliance with RINA Rules in force)

N. PPVT0000013345

14 OCT 2011

Genova

RINA

See letter: PPVT/2011/00837/LAN

Rev.	Date	Description de la révision	Auteur/Visa	Discipline/Visa	Départ/Visa	Projet/Visa
C	08-09-11	NON RETURN VALVE 25" ADDED	AVR			
B	28-04-98	MISE A JOUR	DM			
A	04-96	EMISSION ORIGINALE	VICATO			

Client: **eni saipem**

Nom du projet: **S355**

No de contrat du client: _____ Produit: _____ Type de document: **PLAN**

Titre du document: **DIAGRAMMATIC BILGE SYSTEM**

Identification du document par le client:	Codes OBS:	Rev.	Echelle	Folio
T.B.O.S.355	S05	DMA	1,0-07	TU201
				1/150
Chemin nom de fichier: G:\alshw\foto				FORMAT: A1