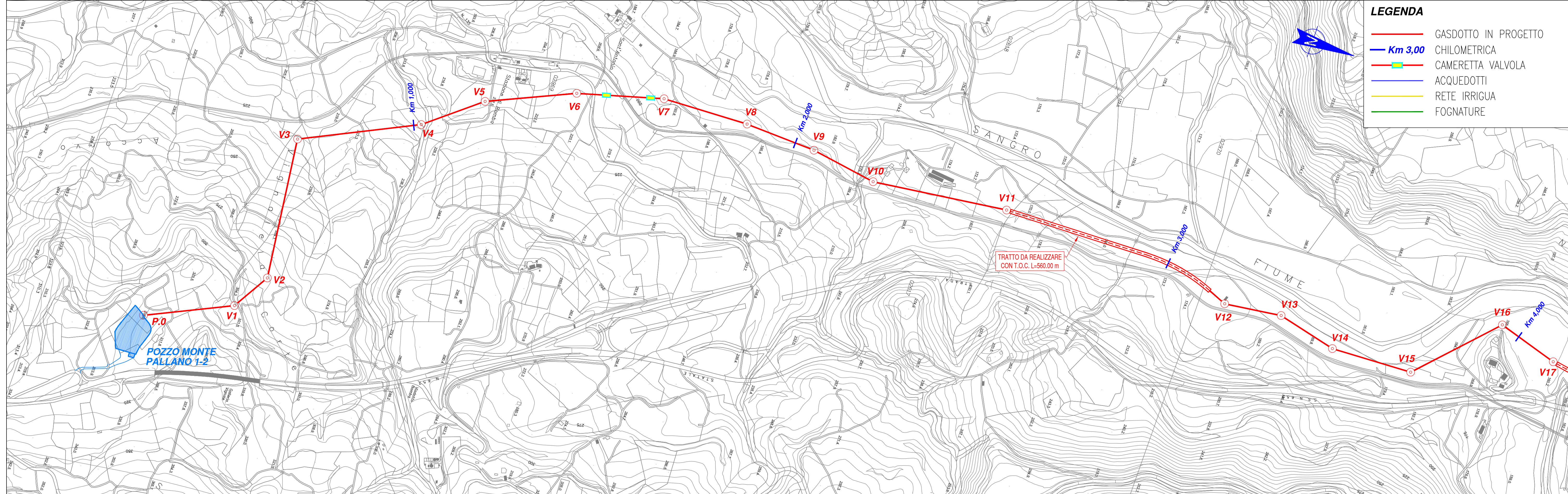


P.0	V1	V2	V3	V4	V5	V6	V.B.01	V.B.02	V7	V8	V9	V10	V11	V12	V13	V14	V15	V16	V17
0.00	-232.31	-341.61	-702.69	-1019.13	-1191.71	-1423.37	-1510.00	-1600.00	-1647.55	-1867.99	-2050.65	-2220.84	-2567.59	-3177.14	-3323.76	-3476.52	-3686.29	-3948.46	-4107.93

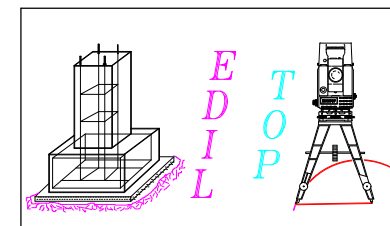
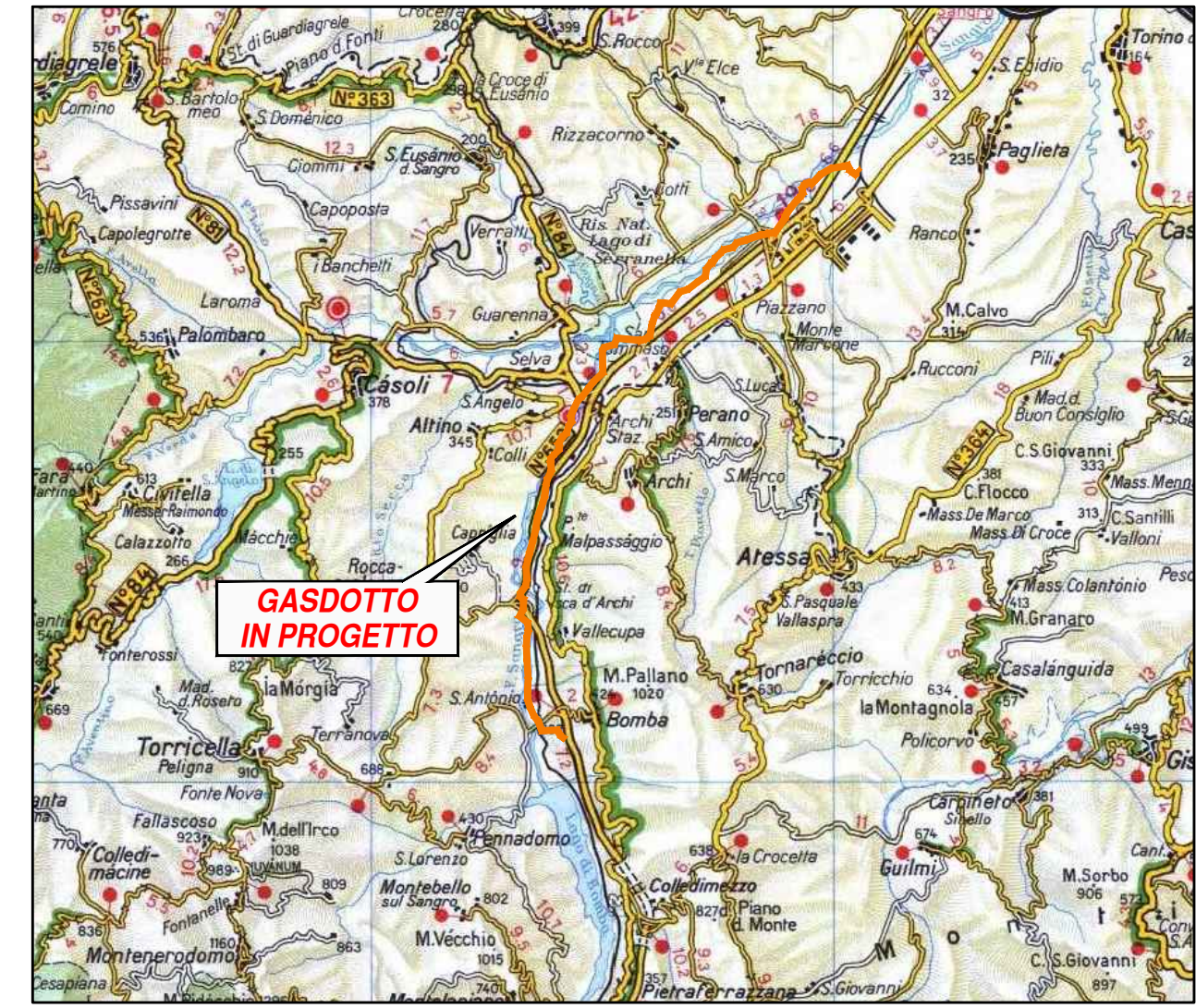
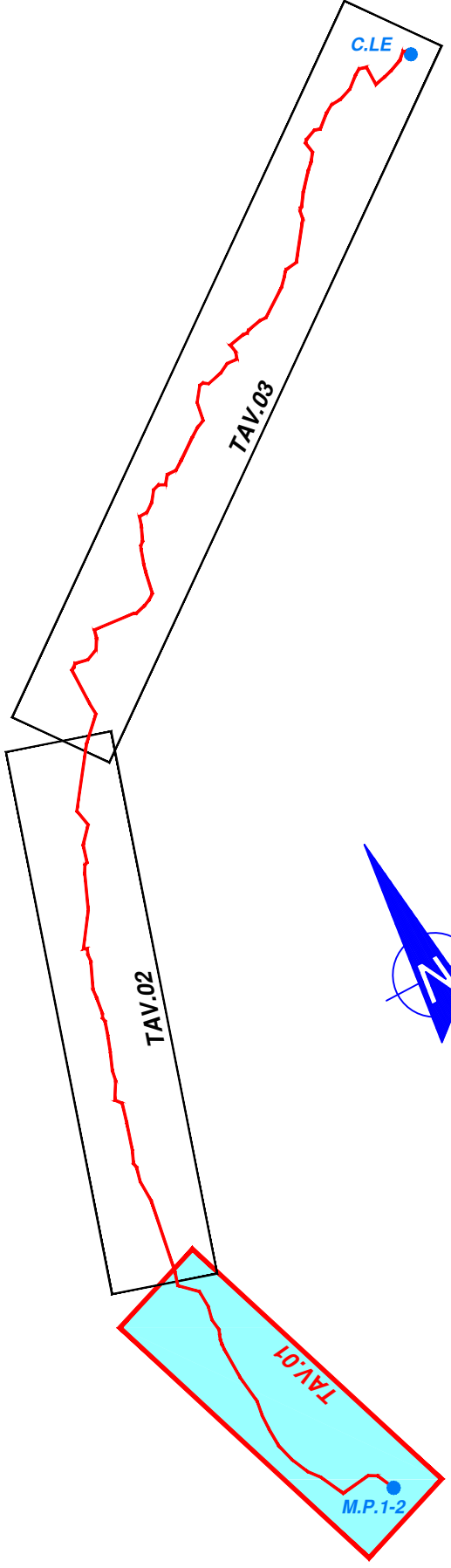
T.O.C. N°1 L=560m

IMPIANTI
VERTICI
PROGRESSIVE (mt)



LEGENDA

- GASDOTTO IN PROGETTO
- Km 3,00
- CAMERETTA VALVOLA
- ACQUEDOTTI
- RETE IRRIGUA
- FOGNATURE



PLANIMETRIA
SCALA 1/5.000
TAVOLA 01/03

G. MARINO DISEGN.	OLIMAR VERIFIC.	OLIMAR APPROV.
DATA DICEMBRE '15	FOLIO 1 DI 1	
SCALA 1:5.000	PLOTTAGGIO 1:1	

2			
1			
0	EMISSIONE PER ENTI	DICEMBRE 2015	
REV. Rev.	DESCRIZIONE Description	DATA Date	VERIFICATO Checked APPROVATO Approved

COMMITTENTE Client **CTMI ENERGIA CMI Energia S.p.A.**

IMPIANTO / OPERA Plant
**GASDOTTO
POZZI MONTE PALLANO 1/2
ZONA IND.LE ATESSA-PAGLIETA**



CODIFICA DOC. / Doc. Number
N° **015.PG.1019**