

SEZIONE 2+450.000

Scala : 500:500
Q.Ref. : -20.00

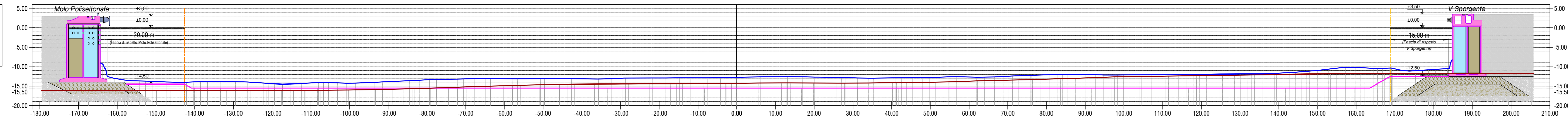


Table with 4 rows: PROGRESSIVE FONDALE, QUOTE FONDALE, DISTANZE PARZIALI FONDALE, PROGRESSIVE ARGILLA, QUOTE ARGILLA, DISTANZE PARZIALI ARGILLA. Includes numerical data and asterisks.

SEZIONE 2+400.000

Scala : 500:500
Q.Ref. : -20.00

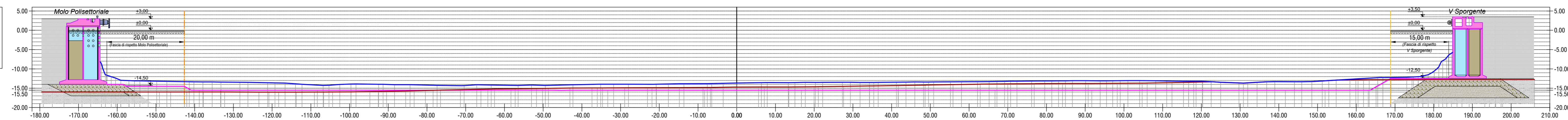


Table with 4 rows: PROGRESSIVE FONDALE, QUOTE FONDALE, DISTANZE PARZIALI FONDALE, PROGRESSIVE ARGILLA, QUOTE ARGILLA, DISTANZE PARZIALI ARGILLA. Includes numerical data and asterisks.

SEZIONE 2+350.00

Scala : 500:500
Q.Ref. : -20.00

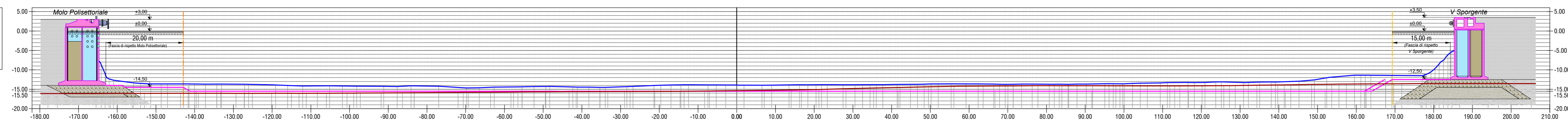


Table with 4 rows: PROGRESSIVE FONDALE, QUOTE FONDALE, DISTANZE PARZIALI FONDALE, PROGRESSIVE ARGILLA, QUOTE ARGILLA, DISTANZE PARZIALI ARGILLA. Includes numerical data and asterisks.

SEZIONE 2+300.00

Scala : 500:500
Q.Ref. : -20.00

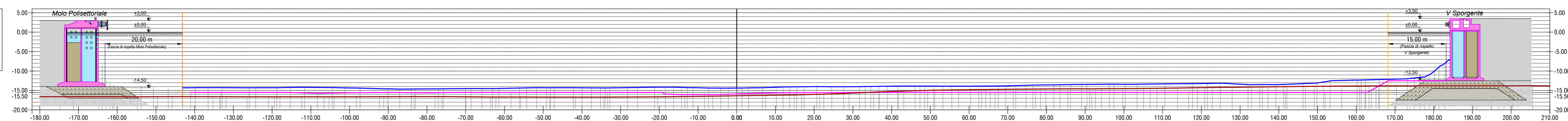
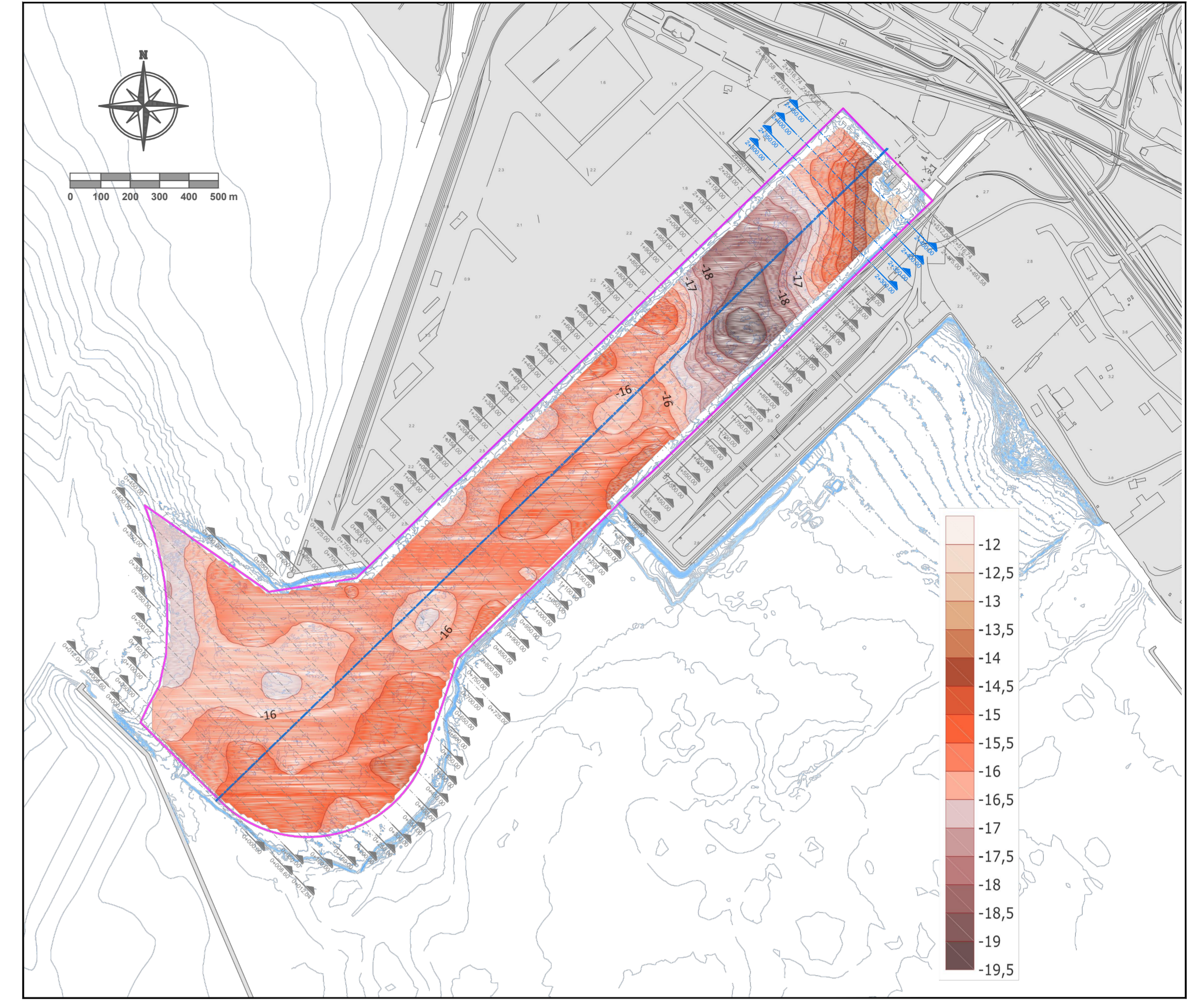


Table with 4 rows: PROGRESSIVE FONDALE, QUOTE FONDALE, DISTANZE PARZIALI FONDALE, PROGRESSIVE ARGILLA, QUOTE ARGILLA, DISTANZE PARZIALI ARGILLA. Includes numerical data and asterisks.

LEGENDA SEZIONI: PROFILO FONDALE, PROFILO ARGILLA, PROFILO DRAGAGGIO. Note: * PER LE QUOTE FONDALE RELATIVE ALLE FASCE DI RISPETTO SI RIMANDA AGLI ELABORATI GRAFICI DA PEGNDR000SV01A A PEGNDR000SV14B

INTERVENTO DI DRAGAGGIO IN AREA POLISETTORIALE (SCALA 1:10.000)



Taranto Authority portuale project information. Includes project name 'DRAGAGGIO AREA MOLO POLISETTORIALE', client 'TARANTO', and contractor 'ASTALDI'.