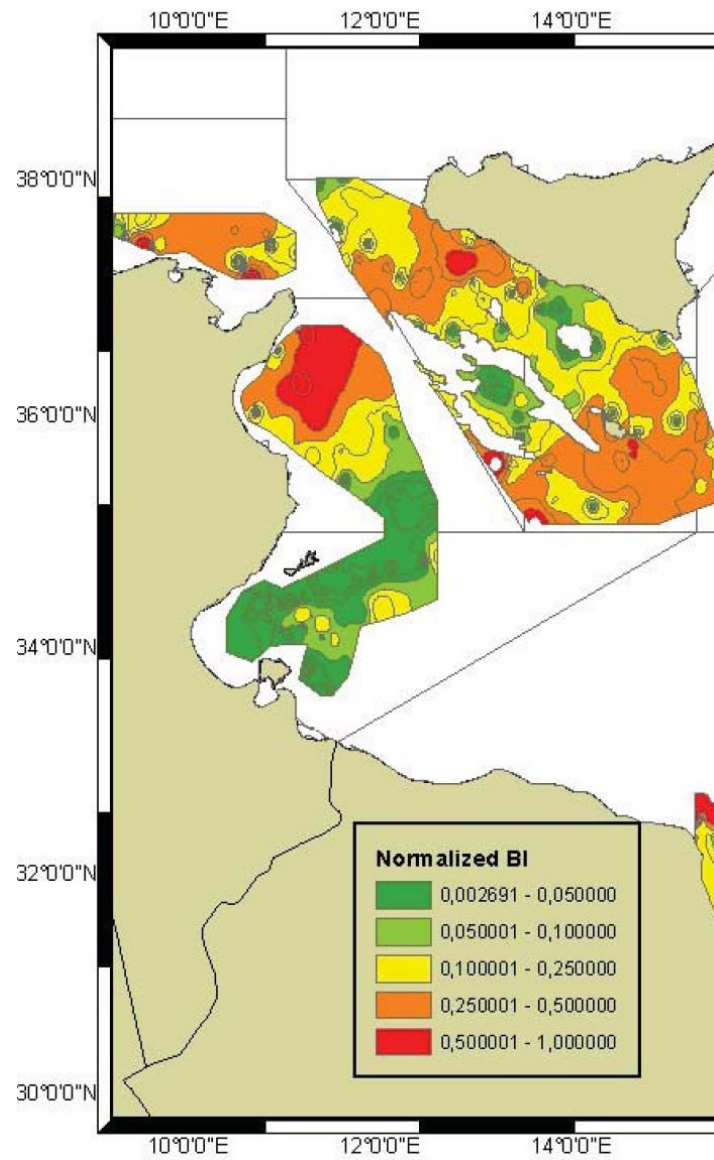
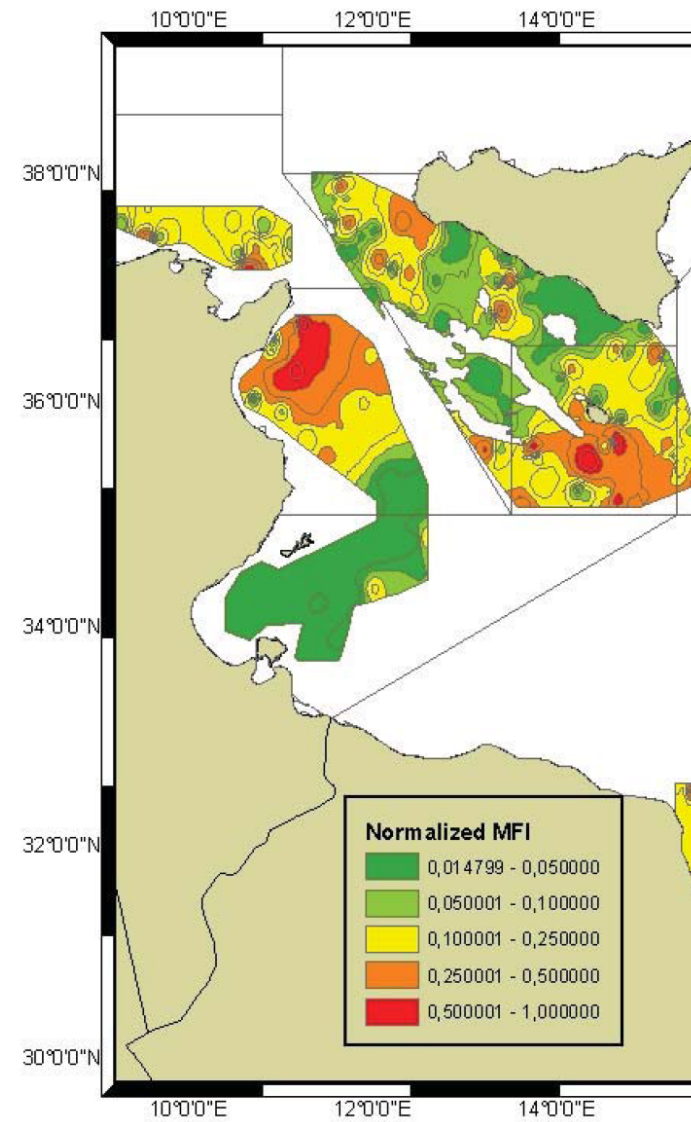


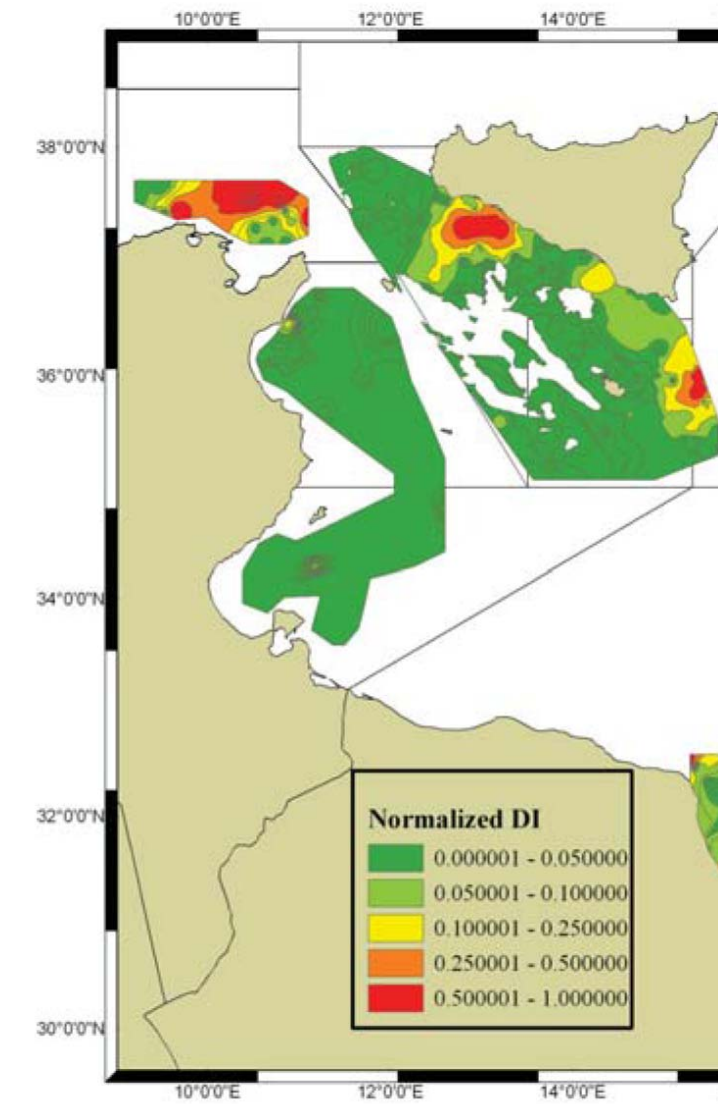
DISTRIBUZIONE DEL NASELLO - BIOMASS INDEX (BI)
(PRIMAVERA.ESTATE 2003)



DISTRIBUZIONE DEL NASELLO - DENSITY INDEX DI FEMMINE
ADULTE (PRIMAVERA.ESTATE 2003)



DISTRIBUZIONE DEL NASELLO - DENSITY INDEX DI GIOVANILI
"YOUNG OF THE YEAR" (YOY) (PRIMAVERA.ESTATE 2003)



RIFERIMENTO

GAROFALO, G., BEL HASSEN, M., JARBOUI, O., ZGOZI, S., GRISTINA, M., FIORENTINO, F., RAGONESE, S., CAMILLERI, M. 2008. PRELIMINARY RESULTS ON SPATIAL DISTRIBUTION OF ABUNDANCE INDICES, NURSERY AND SPAWNING AREAS OF MERLUCCIIUS MERLUCCIIUS AND MULLUS BARBATUS IN THE CENTRAL MEDITERRANEAN. GCP/RER/010/ITA/MSM-TD 19: 24 PP.

FIGURA 7.2a

DISTRIBUZIONE E NURSERY
DEL NASELLO (MERLUCCIIUS
MELUCCIIUS)