





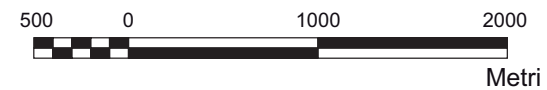
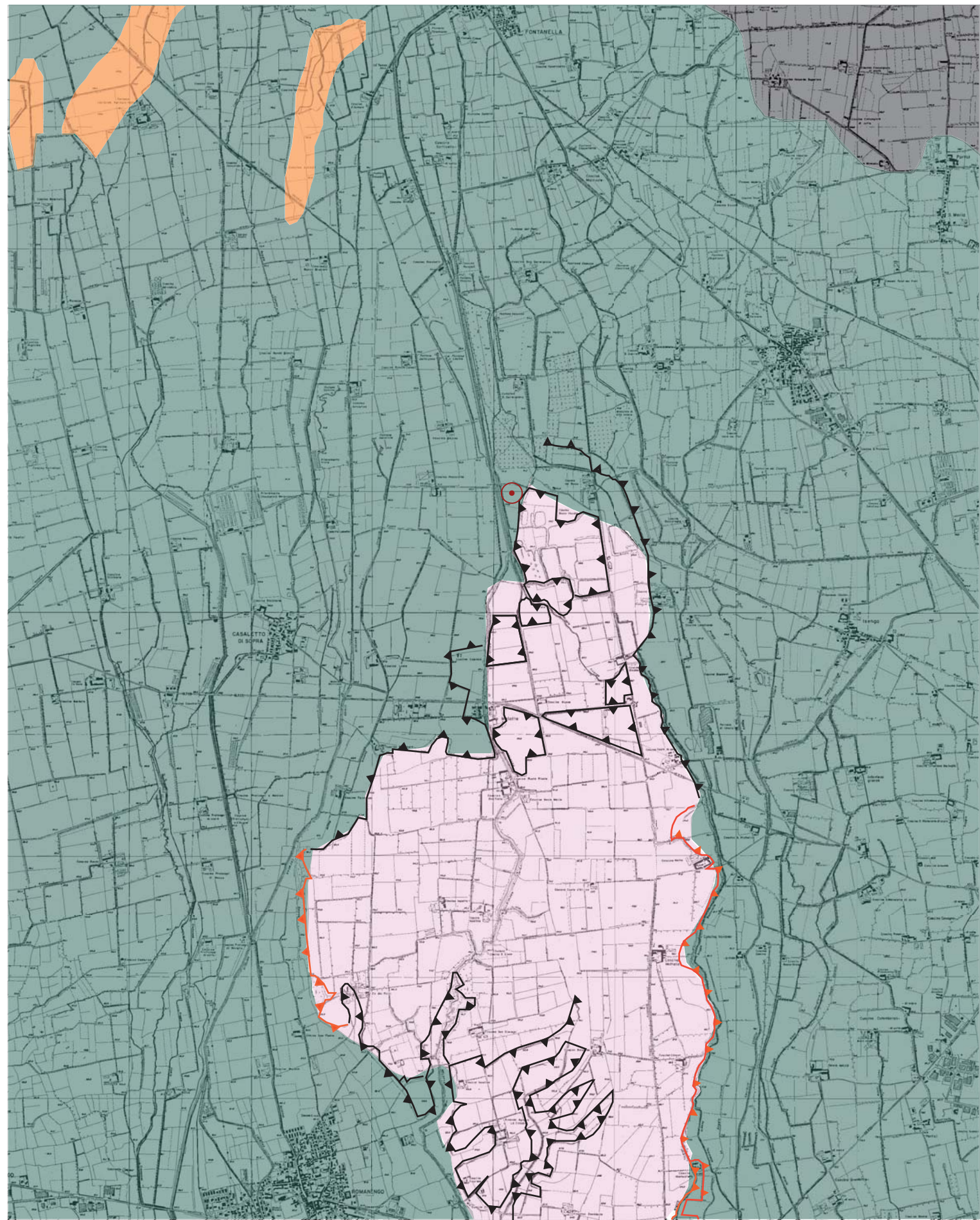


PENGAS ITALIANA SRL
PERMESSO DI RICERCA
“CALCIO”
CARTA GEOLITOLOGICA

LEGENDA

-  Ghiaie - ghiaie con sabbia
-  Ciottoli e ghiaie, ghiaie sabbiose, sabbie limose e limi sabbiosi delle alluvioni attuali e recenti
-  Alluvioni limo-argillose; morene argillose-limose-ghiaiose.
-  Sabbie limose o argillose - Sabbie limose o argillose con sabbia
-  Scarpate principali (>3 m)
-  Scarpate secondarie (<3 m)



 Ubicazione dell'area