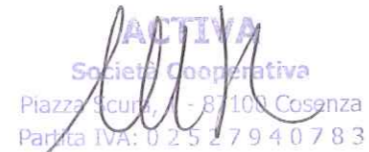
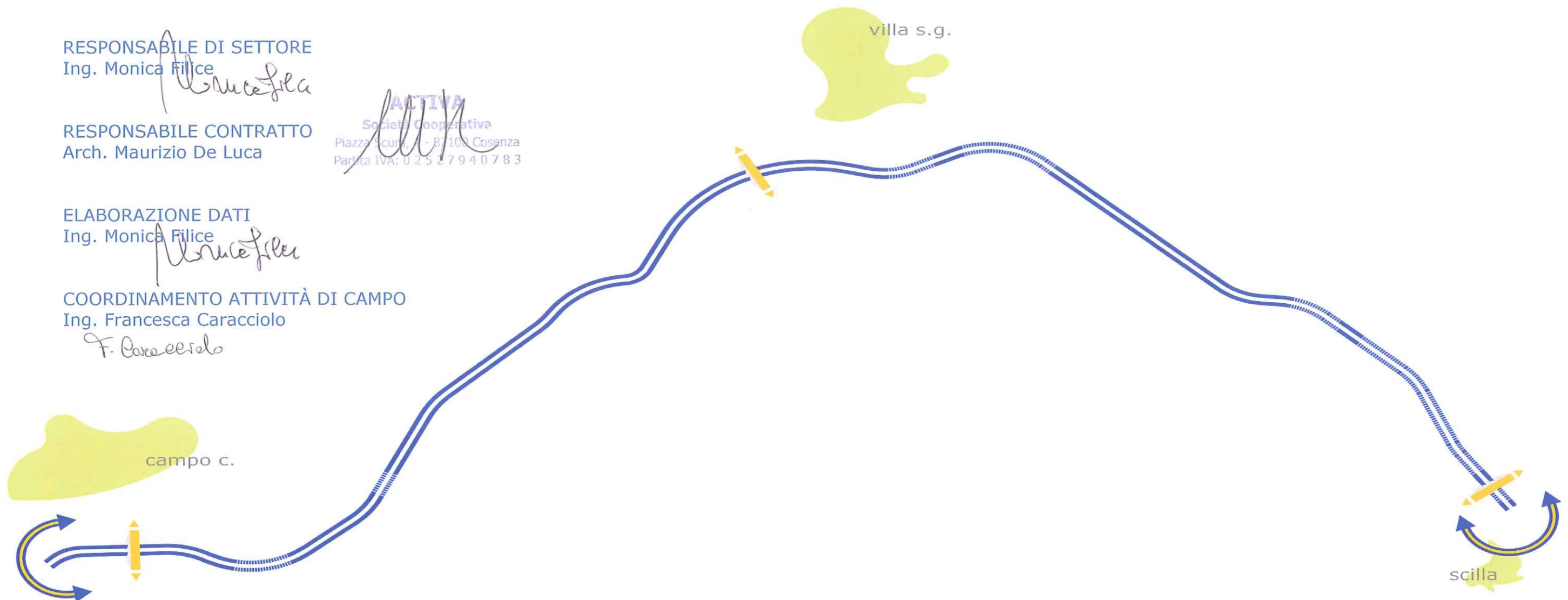
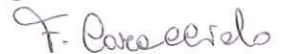


ESECUZIONE E GESTIONE DELLE ATTIVITÀ DI MONITORAGGIO IN CORSO D'OPERA E POST OPERAM DELLE COMPONENTI AMBIENTALI DEI LUOGHI INTERESSATI DALLA REALIZZAZIONE DELLE OPERE APPARTENENTI AL MACROLOTTO VI, NONCHÉ ATTIVITÀ DI MONITORAGGIO IN CORSO D'OPERA DELL'AREA DI CAMPO CALABRO

IV CAMPAGNA 2015**COMPONENTE ATMOSFERA****Rapporto di Prova**CODICE: **CODG87PRATM05NL0120151119**RESPONSABILE DI SETTORE
Ing. Monica FiliceRESPONSABILE CONTRATTO
Arch. Maurizio De Luca

ACTIVA
Società Cooperativa
Piazza Scura, 1 - 87100 Cosenza
Partita IVA: 02527940783

ELABORAZIONE DATI
Ing. Monica FiliceCOORDINAMENTO ATTIVITÀ DI CAMPO
Ing. Francesca Caracciolo

AUTOSTRADA SALERNO-REGGIO CALABRIA Scheda di Monitoraggio Matrice Atmosfera

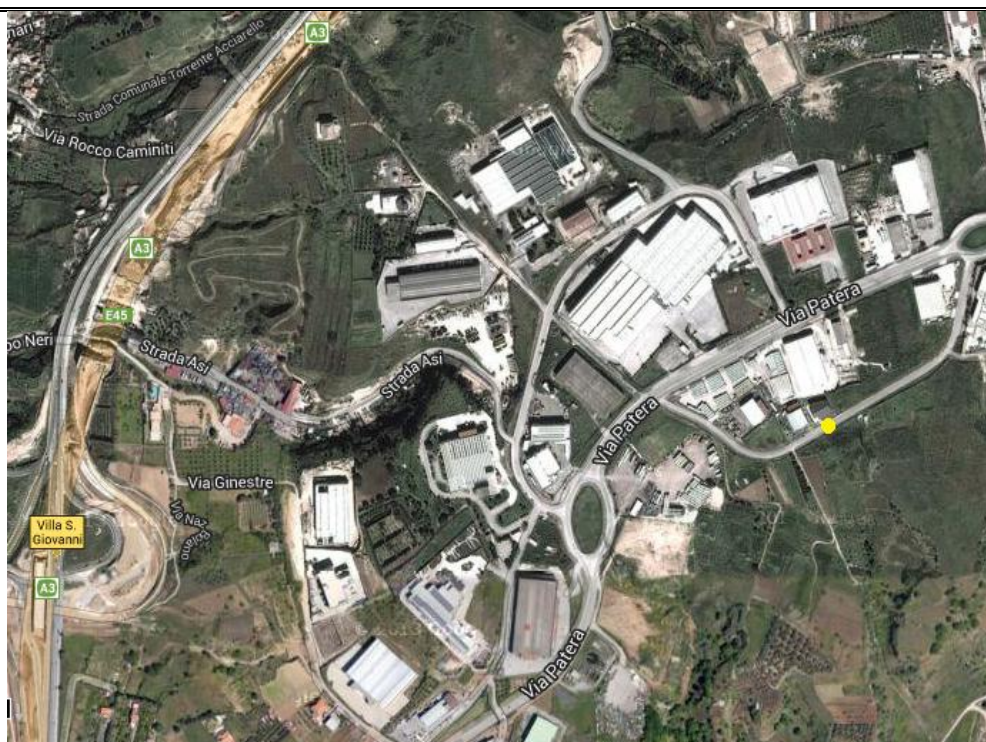
INQUADRAMENTO TERRITORIALE

Pto monitoraggio	PRATM05	
Ubicazione	Campo Calabro (RC)	
Coordinate	38°12'24.23"N	15°39'9.25" E

DISTANZA DAI PRINCIPALI RICETTORI SENSIBILI

	SCUOLA	----	AREA DI PREGIO NATURALISTICO	----
X	RESIDENZIALE ISOLATO	220 m	EDIFICIO DI CULTO	----
	RESIDENZIALE PRODUTTIVO	----	RESIDENZIALE AGGLOMERATO	----
	EDIFICIO STORICO	----	RUDERE ASSIMILABILE	----
	AREA AGRICOLA	----	ATTIVITA' PRODUTTIVA	----

POSIZIONE DEL RILIEVO



DOCUMENTAZIONE FOTOGRAFICA



DISTANZA DALLE PRINCIPALI SORGENTI INQUINANTI

	AUTOSTRADA	1000 m	STRADA VICINALE	-----
	INDUSTRIE	20 m	FERMATA AUTOBUS	-----
	CANTIERI	250 m	STRADA STATALE	140 m
	PARCHEGGIO	-----		-----

MONITORAGGIO QUALITA' DELL'ARIA

DATA INIZIO	18 NOVEMBRE 2015	DATA FINE	03 DICEMBRE 2015
NOTE	Non vi sono eventi da segnalare.		

AUTOSTRADA SALERNO-REGGIO CALABRIA *Scheda di Monitoraggio Matrice Atmosfera*

ANDAMENTO INQUINANTI AERODISPERSI		
~ 18 nov 2015		
Ora	PM ₁₀	PM _{2.5}
	media oraria	media oraria
	µg/m ³	µg/m ³
1.00	<<	<<
2.00	<<	<<
3.00	<<	<<
4.00	<<	<<
5.00	<<	<<
6.00	<<	<<
7.00	<<	<<
8.00	<<	<<
9.00	<<	<<
10.00	<<	<<
11.00	<<	<<
12.00	<<	<<
13.00	<<	<<
14.00	<<	<<
15.00	<<	<<
16.00	<<	<<
17.00	<<	<<
18.00	40.82	31.23
19.00	35.70	26.06
20.00	35.05	25.40
21.00	32.60	22.93
22.00	32.14	22.46
23.00	30.56	20.87
24.00	29.31	19.60

Massimo	40.82	31.23
Minimo	29.31	19.60
Media	33.74	24.08
Dev. St.	3.86	3.90

ANDAMENTO INQUINANTI AERODISPERSI		
~ 19 nov 2015		
Ora	PM ₁₀	PM _{2.5}
	media oraria	media oraria
	µg/m ³	µg/m ³
1.00	27.72	18.00
2.00	25.16	15.41
3.00	23.78	14.02
4.00	23.76	14.00
5.00	25.18	15.44
6.00	23.24	13.48
7.00	23.27	13.50
8.00	24.92	15.17
9.00	25.38	15.63
10.00	28.41	18.69
11.00	34.49	24.84
12.00	40.51	30.92
13.00	36.94	27.31
14.00	28.39	18.67
15.00	36.51	26.88
16.00	35.43	25.78
17.00	32.78	23.11
18.00	48.40	38.89
19.00	50.03	40.53
20.00	45.80	36.26
21.00	37.20	27.58
22.00	44.80	35.25
23.00	39.01	29.40
24.00	30.16	20.46

Massimo	50.03	40.53
Minimo	23.24	13.48
Media	32.97	23.30
Dev. St.	8.50	8.58

ANDAMENTO INQUINANTI AERODISPERSI		
~ 20 nov 2015		
Ora	PM ₁₀	PM _{2.5}
	media oraria	media oraria
	µg/m ³	µg/m ³
1.00	28.55	18.84
2.00	32.90	23.23
3.00	29.76	20.06
4.00	27.14	17.41
5.00	28.36	18.65
6.00	27.09	17.36
7.00	28.75	19.04
8.00	30.14	20.44
9.00	27.87	18.15
10.00	25.13	15.38
11.00	23.57	13.81
12.00	22.98	13.21
13.00	21.24	11.45
14.00	19.49	9.69
15.00	19.65	9.85
16.00	20.22	10.42
17.00	25.35	15.60
18.00	102.45	93.47
19.00	29.91	20.21
20.00	23.70	13.93
21.00	20.77	10.97
22.00	20.44	10.64
23.00	20.18	10.38
24.00	17.82	8.00

Massimo	102.45	93.47
Minimo	17.82	8.00
Media	28.06	18.34
Dev. St.	16.39	16.56

ANDAMENTO INQUINANTI AERODISPERSI		
~ 21 nov 2015		
Ora	PM ₁₀	PM _{2.5}
	media oraria	media oraria
	µg/m ³	µg/m ³
1.00	17.05	7.22
2.00	16.09	6.25
3.00	14.83	4.98
4.00	15.13	5.28
5.00	17.08	7.25
6.00	18.93	9.12
7.00	20.53	10.74
8.00	21.92	12.14
9.00	21.05	11.26
10.00	23.21	13.44
11.00	20.47	10.67
12.00	20.60	10.80
13.00	20.22	10.42
14.00	18.19	8.37
15.00	17.75	7.92
16.00	18.97	9.16
17.00	23.04	13.27
18.00	22.48	12.70
19.00	18.05	8.23
20.00	15.76	5.92
21.00	16.22	6.38
22.00	14.76	4.90
23.00	15.13	5.28
24.00	17.72	7.90

Massimo	23.21	13.44
Minimo	14.76	4.90
Media	18.55	8.73
Dev. St.	2.69	2.72

AUTOSTRADA SALERNO-REGGIO CALABRIA *Scheda di Monitoraggio Matrice Atmosfera*

ANDAMENTO INQUINANTI AERODISPERSI		
~ 22 nov 2015		
	PM ₁₀	PM _{2.5}
Ora	media oraria	media oraria
	µg/m ³	µg/m ³
1.00	24.03	14.27
2.00	24.91	15.16
3.00	19.17	9.36
4.00	14.79	4.94
5.00	10.84	2.98
6.00	10.66	2.82
7.00	9.04	2.05
8.00	9.49	2.10
9.00	16.70	6.88
10.00	9.77	2.31
11.00	11.79	1.96
12.00	14.29	4.43
13.00	14.00	4.14
14.00	13.20	3.33
15.00	12.74	2.87
16.00	12.11	2.25
17.00	12.88	3.01
18.00	16.48	6.65
19.00	16.66	6.83
20.00	16.95	7.12
21.00	15.29	5.44
22.00	15.08	5.23
23.00	16.79	6.96
24.00	15.31	5.47

Massimo	24.91	15.16
Minimo	9.04	1.96
Media	14.71	5.36
Dev. St.	4.02	3.53

ANDAMENTO INQUINANTI AERODISPERSI		
~ 23 nov 2015		
	PM ₁₀	PM _{2.5}
Ora	media oraria	media oraria
	µg/m ³	µg/m ³
1.00	12.66	2.78
2.00	12.68	2.81
3.00	11.61	1.74
4.00	10.42	2.59
5.00	10.69	2.87
6.00	9.38	2.07
7.00	9.55	2.11
8.00	9.80	2.19
9.00	10.10	2.37
10.00	12.81	2.95
11.00	17.24	7.41
12.00	11.66	1.78
13.00	11.94	2.06
14.00	11.44	1.57
15.00	12.93	3.06
16.00	20.40	10.60
17.00	23.46	13.69
18.00	22.65	12.87
19.00	16.26	6.42
20.00	17.40	7.57
21.00	18.36	8.54
22.00	17.52	7.70
23.00	24.21	14.46
24.00	22.83	13.06

Massimo	24.21	14.46
Minimo	9.38	1.57
Media	14.92	5.64
Dev. St.	4.90	4.42

ANDAMENTO INQUINANTI AERODISPERSI		
~ 24 nov 2015		
	PM ₁₀	PM _{2.5}
Ora	media oraria	media oraria
	µg/m ³	µg/m ³
1.00	22.35	12.57
2.00	18.24	8.42
3.00	20.54	10.74
4.00	18.76	8.94
5.00	17.55	7.72
6.00	12.75	2.88
7.00	13.16	3.29
8.00	14.18	4.32
9.00	15.42	5.57
10.00	20.92	11.12
11.00	19.24	9.43
12.00	15.90	6.06
13.00	21.50	11.72
14.00	15.91	6.06
15.00	15.57	5.72
16.00	23.96	14.19
17.00	25.15	15.40
18.00	22.65	12.87
19.00	22.52	12.74
20.00	20.21	10.41
21.00	25.21	15.47
22.00	24.99	15.24
23.00	25.13	15.39
24.00	23.70	13.94

Massimo	25.21	15.47
Minimo	12.75	2.88
Media	19.81	10.01
Dev. St.	4.03	4.07

ANDAMENTO INQUINANTI AERODISPERSI		
~ 25 nov 2015		
	PM ₁₀	PM _{2.5}
Ora	media oraria	media oraria
	µg/m ³	µg/m ³
1.00	19.61	9.81
2.00	17.31	7.48
3.00	13.28	3.41
4.00	12.92	3.05
5.00	14.45	4.60
6.00	13.55	4.02
7.00	11.33	2.05
8.00	9.76	2.70
9.00	9.50	2.37
10.00	19.24	9.90
11.00	13.80	3.95
12.00	37.84	28.23
13.00	11.37	1.74
14.00	14.66	5.74
15.00	15.74	5.91
16.00	14.64	4.78
17.00	13.29	3.43
18.00	13.52	3.65
19.00	12.16	2.28
20.00	12.02	2.16
21.00	12.27	2.39
22.00	13.88	4.02
23.00	14.23	4.38
24.00	13.81	3.95

Massimo	37.84	28.23
Minimo	9.50	1.74
Media	14.76	5.25
Dev. St.	5.49	5.36

AUTOSTRADA SALERNO-REGGIO CALABRIA Scheda di Monitoraggio Matrice Atmosfera

ANDAMENTO INQUINANTI AERODISPERSI		
~ 26 nov 2015		
	PM ₁₀	PM _{2.5}
Ora	media oraria	media oraria
	µg/m ³	µg/m ³
1.00	12.13	2.25
2.00	10.54	2.76
3.00	9.63	2.23
4.00	9.26	2.20
5.00	8.49	2.00
6.00	9.02	2.05
7.00	9.88	2.58
8.00	12.23	2.35
9.00	12.16	2.28
10.00	10.76	1.14
11.00	9.25	2.00
12.00	9.63	2.16
13.00	9.09	2.00
14.00	9.28	2.05
15.00	8.01	2.00
16.00	8.32	2.00
17.00	9.68	2.37
18.00	15.33	5.48
19.00	14.86	5.01
20.00	13.96	4.10
21.00	11.66	2.23
22.00	9.65	2.48
23.00	9.71	2.36
24.00	10.93	1.33

Massimo	15.33	5.48
Minimo	8.01	1.14
Media	10.56	2.48
Dev. St.	2.00	1.00

ANDAMENTO INQUINANTI AERODISPERSI		
~ 27 nov 2015		
	PM ₁₀	PM _{2.5}
Ora	media oraria	media oraria
	µg/m ³	µg/m ³
1.00	9.68	1.30
2.00	6.94	1.00
3.00	6.34	1.00
4.00	6.37	1.00
5.00	6.63	1.00
6.00	6.97	1.00
7.00	7.22	1.00
8.00	7.32	1.00
9.00	13.28	3.87
10.00	9.57	2.52
11.00	10.75	1.14
12.00	21.22	11.66
13.00	9.65	2.30
14.00	9.46	2.15
15.00	20.48	10.72
16.00	10.26	2.79
17.00	9.05	2.10
18.00	9.86	2.34
19.00	11.79	2.03
20.00	9.73	2.48
21.00	12.67	3.20
22.00	9.97	2.44
23.00	12.55	3.35
24.00	8.53	2.05

Massimo	21.22	11.66
Minimo	6.34	1.00
Media	10.26	2.73
Dev. St.	3.83	2.75

ANDAMENTO INQUINANTI AERODISPERSI		
~ 28 nov 2015		
	PM ₁₀	PM _{2.5}
Ora	media oraria	media oraria
	µg/m ³	µg/m ³
1.00	9.28	2.56
2.00	10.49	1.10
3.00	10.72	1.03
4.00	11.70	1.99
5.00	11.41	1.56
6.00	11.08	1.22
7.00	11.17	1.32
8.00	15.68	5.83
9.00	15.45	5.60
10.00	13.27	3.40
11.00	12.42	2.54
12.00	13.84	3.97
13.00	15.08	5.23
14.00	13.39	3.53
15.00	13.31	3.44
16.00	15.05	5.20
17.00	16.17	6.34
18.00	17.37	7.55
19.00	15.39	5.54
20.00	16.59	6.76
21.00	21.29	11.50
22.00	22.15	12.37
23.00	21.65	11.87
24.00	16.66	6.83

Massimo	22.15	12.37
Minimo	9.28	1.03
Media	14.61	4.93
Dev. St.	3.53	3.36

ANDAMENTO INQUINANTI AERODISPERSI		
~ 29 nov 2015		
	PM ₁₀	PM _{2.5}
Ora	media oraria	media oraria
	µg/m ³	µg/m ³
1.00	13.78	3.92
2.00	13.39	3.52
3.00	12.64	2.78
4.00	11.86	1.98
5.00	12.91	3.04
6.00	12.74	2.86
7.00	13.97	4.11
8.00	16.32	6.48
9.00	21.56	11.77
10.00	16.64	6.80
11.00	11.38	1.51
12.00	11.14	1.33
13.00	11.21	1.41
14.00	10.94	1.10
15.00	12.57	2.69
16.00	13.65	3.79
17.00	14.69	4.84
18.00	18.59	8.77
19.00	17.13	7.30
20.00	15.29	5.44
21.00	22.25	12.47
22.00	16.80	6.97
23.00	16.85	7.02
24.00	17.73	7.90

Massimo	22.25	12.47
Minimo	10.94	1.10
Media	14.83	4.99
Dev. St.	3.15	3.16

AUTOSTRADA SALERNO-REGGIO CALABRIA *Scheda di Monitoraggio Matrice Atmosfera*

ANDAMENTO INQUINANTI AERODISPERSI		
~ Ora	30 nov 2015	
	PM ₁₀	PM _{2.5}
	media oraria µg/m ³	media oraria µg/m ³
1.00	13.42	3.56
2.00	13.43	3.56
3.00	13.90	4.04
4.00	14.40	4.54
5.00	14.30	4.44
6.00	14.08	4.23
7.00	12.91	3.04
8.00	13.83	3.97
9.00	13.66	3.80
10.00	14.06	4.21
11.00	15.83	5.99
12.00	14.82	4.97
13.00	14.64	4.79
14.00	15.21	5.37
15.00	15.64	5.80
16.00	16.72	6.89
17.00	18.82	9.01
18.00	22.67	12.89
19.00	20.03	10.23
20.00	19.30	9.50
21.00	18.92	9.11
22.00	20.09	10.29
23.00	19.36	9.55
24.00	16.99	7.16

Massimo	22.67	12.89
Minimo	12.91	3.04
Media	16.13	6.29
Dev. St.	2.73	2.76

ANDAMENTO INQUINANTI AERODISPERSI		
~ Ora	01 dic 2015	
	PM ₁₀	PM _{2.5}
	media oraria µg/m ³	media oraria µg/m ³
1.00	21.29	11.50
2.00	21.35	11.56
3.00	17.07	7.24
4.00	15.14	5.29
5.00	14.03	4.17
6.00	12.70	2.84
7.00	13.69	3.82
8.00	15.01	5.16
9.00	15.52	5.67
10.00	14.14	4.29
11.00	12.67	2.80
12.00	13.60	3.74
13.00	13.98	4.12
14.00	13.95	4.09
15.00	15.29	5.45
16.00	16.56	6.72
17.00	17.33	7.50
18.00	16.45	6.62
19.00	17.33	7.50
20.00	18.16	8.34
21.00	24.69	14.93
22.00	21.11	11.32
23.00	17.96	8.14
24.00	16.17	6.33

Massimo	24.69	14.93
Minimo	12.67	2.80
Media	16.47	6.63
Dev. St.	3.08	3.11

ANDAMENTO INQUINANTI AERODISPERSI		
~ Ora	02 dic 2015	
	PM ₁₀	PM _{2.5}
	media oraria µg/m ³	media oraria µg/m ³
1.00	15.90	6.06
2.00	13.69	3.83
3.00	12.23	2.35
4.00	11.92	2.05
5.00	13.44	3.57
6.00	15.40	5.55
7.00	13.62	3.75
8.00	15.36	5.51
9.00	22.33	12.56
10.00	15.27	5.43
11.00	14.65	4.80
12.00	13.85	3.99
13.00	14.69	4.84
14.00	14.25	4.39
15.00	14.90	5.05
16.00	14.51	4.65
17.00	14.44	4.58
18.00	18.20	8.38
19.00	25.99	16.25
20.00	32.56	22.89
21.00	26.87	17.14
22.00	25.78	16.04
23.00	22.59	12.82
24.00	20.93	11.14

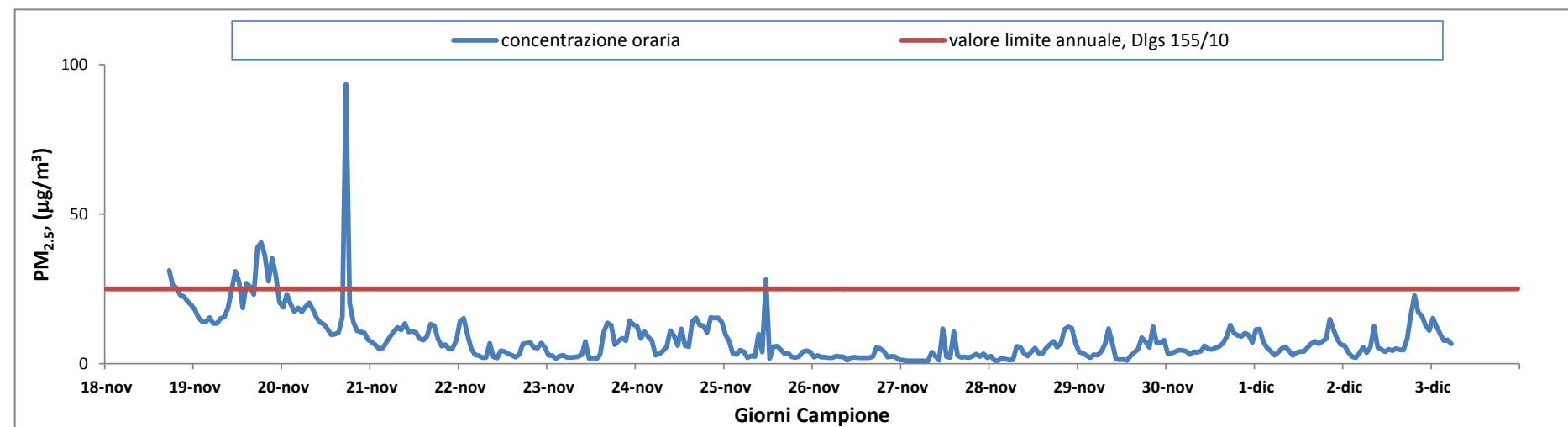
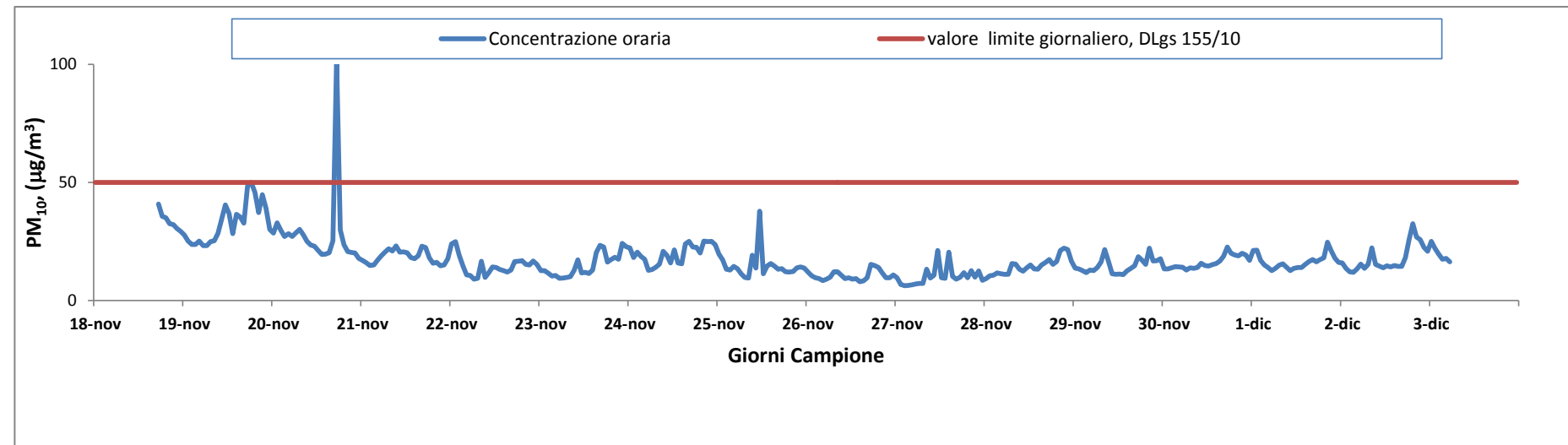
Massimo	32.6	22.9
Minimo	11.9	2.0
Media	17.6	7.8
Dev. St.	5.53	5.58

ANDAMENTO INQUINANTI AERODISPERSI		
~ Ora	03 dic 2015	
	PM ₁₀	PM _{2.5}
	media oraria µg/m ³	media oraria µg/m ³
1.00	25.07	15.32
2.00	22.09	12.31
3.00	19.64	9.83
4.00	17.56	7.73
5.00	17.84	8.02
6.00	16.47	6.64
7.00	<<	<<
8.00	<<	<<
9.00	<<	<<
10.00	<<	<<
11.00	<<	<<
12.00	<<	<<
13.00	<<	<<
14.00	<<	<<
15.00	<<	<<
16.00	<<	<<
17.00	<<	<<
18.00	<<	<<
19.00	<<	<<
20.00	<<	<<
21.00	<<	<<
22.00	<<	<<
23.00	<<	<<
24.00	<<	<<

Massimo	25.1	15.3
Minimo	16.5	6.6
Media	19.8	10.0
Dev. St.	3.3	3.3

AUTOSTRADA SALERNO-REGGIO CALABRIA Scheda di Monitoraggio Matrice Atmosfera

CONCENTRAZIONE Polveri Totali sospese	
data	PTS ¹ 24h µg/m ³
19/11/15	41.4
20/11/15	35.3
21/11/15	23.4
22/11/15	28.7
23/11/15	17.4
24/11/15	22.5
25/11/15	16.4
26/11/15	12.7
27/11/15	12.0
28/11/15	18.4
29/11/15	19.1
30/11/15	18.7
01/12/15	31.3
02/12/15	19.1



Normativa di Riferimento

Inquinante	Normativa	Valore limite orario ²	Valore limite (media 8h) ³	Valore limite 24h ⁴	Valore limite annuale ⁵	Soglia di allarme
Polveri Sottili con AD < 10 µm (PM10)	DLgs 155/10	—	—	50 µg/m ³ da non superare più di 35 volte per anno civile	40 µg/m ³	—
Polveri Sottili con AD < 2,5 µm (PM2,5)	DLgs 155/10	—	—	—	25 µg/m ³	—
Polveri Totali Sospese con AD > 10 µm (PTS)	DM 203/88	—	—	150 µg/m ³	—	300 µg/m ³

AUTOSTRADA SALERNO-REGGIO CALABRIA *Scheda di Monitoraggio Matrice Atmosfera*

ANDAMENTO VARIABILE VENTO 18 nov 2015		
Ora	Velocità	Direzione
	m/s	Gradi
1.00	<<	<<
2.00	<<	<<
3.00	<<	<<
4.00	<<	<<
5.00	<<	<<
6.00	<<	<<
7.00	<<	<<
8.00	<<	<<
9.00	<<	<<
10.00	<<	<<
11.00	<<	<<
12.00	<<	<<
13.00	<<	<<
14.00	<<	<<
15.00	<<	<<
16.00	<<	<<
17.00	<<	<<
18.00	0.06	<<
19.00	0.01	CALMA
20.00	0.19	<<
21.00	1.73	45.94
22.00	0.35	54.59
23.00	1.13	54.57
24.00	1.27	56.14

ANDAMENTO VARIABILE VENTO 19-nov-15		
Ora	Velocità	Direzione
	m/s	Gradi
1.00	0.48	55.00
2.00	0.18	<<
3.00	0.16	<<
4.00	0.04	CALMA
5.00	0.00	CALMA
6.00	0.05	<<
7.00	3.58	53.51
8.00	1.01	54.67
9.00	0.01	CALMA
10.00	0.00	CALMA
11.00	0.00	CALMA
12.00	0.00	CALMA
13.00	0.00	CALMA
14.00	0.09	<<
15.00	0.00	CALMA
16.00	0.00	CALMA
17.00	0.00	CALMA
18.00	0.00	CALMA
19.00	0.01	CALMA
20.00	0.01	CALMA
21.00	0.01	CALMA
22.00	0.00	CALMA
23.00	0.10	<<
24.00	0.00	CALMA

ANDAMENTO VARIABILE VENTO 20-nov-15		
Ora	Velocità	Direzione
	m/s	Gradi
1.00	0.03	CALMA
2.00	0.50	46.12
3.00	0.72	20.01
4.00	0.16	<<
5.00	0.02	CALMA
6.00	0.00	CALMA
7.00	0.00	CALMA
8.00	0.01	CALMA
9.00	0.00	CALMA
10.00	0.77	25.04
11.00	2.34	20.68
12.00	1.26	18.99
13.00	2.72	339.74
14.00	2.66	359.11
15.00	1.42	358.79
16.00	0.72	0.28
17.00	0.27	344.05
18.00	0.88	57.71
19.00	1.99	52.31
20.00	3.25	51.77
21.00	5.08	52.86
22.00	3.76	53.02
23.00	3.91	53.26
24.00	1.73	49.42

ANDAMENTO VARIABILE VENTO 21-nov-15		
Ora	Velocità	Direzione
	m/s	Gradi
1.00	0.40	48.61
2.00	2.03	52.53
3.00	0.00	CALMA
4.00	1.86	47.98
5.00	0.55	48.81
6.00	0.20	<<
7.00	0.79	229.58
8.00	0.35	46.95
9.00	0.14	<<
10.00	0.14	<<
11.00	0.52	294.69
12.00	0.25	330.15
13.00	2.96	179.65
14.00	6.91	201.07
15.00	7.96	200.01
16.00	4.90	183.57
17.00	1.82	175.11
18.00	9.44	159.61
19.00	12.21	159.37
20.00	10.57	160.03
21.00	13.97	177.46
22.00	12.64	177.47
23.00	11.96	178.20
24.00	10.49	177.74

AUTOSTRADA SALERNO-REGGIO CALABRIA Scheda di Monitoraggio Matrice Atmosfera

ANDAMENTO VARIABILE VENTO 22-nov-15		
Ora	Velocità	Direzione
	m/s	Gradi
1.00	7.98	178.60
2.00	6.10	178.35
3.00	2.43	268.76
4.00	1.15	289.77
5.00	0.00	CALMA
6.00	0.42	357.89
7.00	2.58	359.52
8.00	0.19	<<
9.00	0.26	0.50
10.00	0.98	252.05
11.00	1.87	338.60
12.00	0.58	343.11
13.00	0.51	46.36
14.00	0.50	19.62
15.00	1.58	358.17
16.00	0.78	293.79
17.00	0.16	<<
18.00	0.00	CALMA
19.00	0.00	CALMA
20.00	2.17	46.66
21.00	2.50	51.30
22.00	2.59	52.44
23.00	0.47	54.40
24.00	1.51	54.51

ANDAMENTO VARIABILE VENTO 23-nov-15		
Ora	Velocità	Direzione
	m/s	Gradi
1.00	1.76	52.49
2.00	5.75	53.97
3.00	1.87	54.15
4.00	2.29	52.58
5.00	4.52	53.54
6.00	4.10	52.04
7.00	2.83	53.84
8.00	0.00	CALMA
9.00	0.28	54.17
10.00	0.00	CALMA
11.00	0.40	54.10
12.00	0.05	CALMA
13.00	0.10	<<
14.00	0.55	357.97
15.00	0.10	<<
16.00	0.00	CALMA
17.00	0.00	CALMA
18.00	1.47	343.19
19.00	0.85	357.00
20.00	0.37	24.88
21.00	0.38	23.23
22.00	0.00	CALMA
23.00	0.01	CALMA
24.00	0.22	<<

ANDAMENTO VARIABILE VENTO 24-nov-15		
Ora	Velocità	Direzione
	m/s	Gradi
1.00	0.15	<<
2.00	2.37	20.64
3.00	0.43	47.90
4.00	0.12	<<
5.00	0.94	51.09
6.00	1.75	46.84
7.00	0.00	CALMA
8.00	0.03	CALMA
9.00	0.41	112.27
10.00	1.24	106.49
11.00	2.46	187.31
12.00	4.27	222.41
13.00	2.81	184.50
14.00	1.89	204.67
15.00	1.01	201.00
16.00	3.76	19.53
17.00	0.23	<<
18.00	3.07	45.62
19.00	3.82	48.14
20.00	1.95	50.02
21.00	1.63	23.58
22.00	4.00	23.21
23.00	3.31	48.54
24.00	3.77	20.37

ANDAMENTO VARIABILE VENTO 25-nov-15		
Ora	Velocità	Direzione
	m/s	Gradi
1.00	2.11	22.78
2.00	0.89	45.03
3.00	1.12	45.24
4.00	0.91	43.35
5.00	4.47	111.40
6.00	5.54	46.42
7.00	1.21	357.09
8.00	1.50	49.03
9.00	0.04	CALMA
10.00	0.00	CALMA
11.00	4.01	245.92
12.00	0.36	268.38
13.00	0.01	CALMA
14.00	4.77	271.37
15.00	14.19	359.52
16.00	16.74	359.59
17.00	18.06	359.51
18.00	15.21	314.93
19.00	12.42	314.56
20.00	2.95	338.07
21.00	3.75	338.58
22.00	0.80	19.54
23.00	0.15	<<
24.00	2.69	49.65

AUTOSTRADA SALERNO-REGGIO CALABRIA *Scheda di Monitoraggio Matrice Atmosfera*

ANDAMENTO VARIABILE VENTO 26-nov-15		
	Velocità	Direzione
Ora	m/s	Gradi
1.00	2.46	47.78
2.00	2.81	45.81
3.00	0.40	104.86
4.00	0.33	111.00
5.00	0.19	<<
6.00	1.71	136.34
7.00	5.59	139.60
8.00	13.20	157.24
9.00	12.58	157.30
10.00	12.57	157.97
11.00	12.76	156.70
12.00	9.97	159.66
13.00	12.97	159.13
14.00	6.73	156.02
15.00	9.97	158.27
16.00	2.84	137.57
17.00	2.35	154.46
18.00	0.57	51.73
19.00	2.03	49.85
20.00	1.69	50.66
21.00	0.24	<<
22.00	0.23	<<
23.00	0.70	50.10
24.00	0.08	<<

ANDAMENTO VARIABILE VENTO 27-nov-15		
	Velocità	Direzione
Ora	m/s	Gradi
1.00	0.75	49.00
2.00	2.54	225.27
3.00	6.32	226.30
4.00	5.92	225.05
5.00	7.49	224.74
6.00	5.03	204.50
7.00	4.75	202.59
8.00	0.83	161.83
9.00	0.30	232.37
10.00	1.22	49.36
11.00	0.98	334.36
12.00	0.98	222.51
13.00	0.51	109.33
14.00	1.67	149.71
15.00	0.16	<<
16.00	1.48	268.09
17.00	2.93	292.11
18.00	1.07	317.21
19.00	1.63	25.43
20.00	0.82	316.94
21.00	0.12	<<
22.00	0.05	<<
23.00	2.77	45.09
24.00	0.10	<<

ANDAMENTO VARIABILE VENTO 28-nov-15		
	Velocità	Direzione
Ora	m/s	Gradi
1.00	0.98	346.47
2.00	1.07	49.04
3.00	0.24	<<
4.00	3.04	20.04
5.00	5.22	336.36
6.00	5.37	337.69
7.00	1.27	359.36
8.00	2.66	358.80
9.00	4.55	314.66
10.00	7.36	335.23
11.00	8.78	316.03
12.00	5.71	336.03
13.00	3.54	337.59
14.00	7.01	335.78
15.00	3.96	315.86
16.00	2.04	0.19
17.00	2.60	358.82
18.00	3.82	22.42
19.00	4.90	22.42
20.00	1.88	24.37
21.00	0.14	<<
22.00	0.00	CALMA
23.00	2.55	44.90
24.00	4.93	48.27

ANDAMENTO VARIABILE VENTO 29-nov-15		
	Velocità	Direzione
Ora	m/s	Gradi
1.00	7.38	47.47
2.00	2.97	48.73
3.00	5.91	51.68
4.00	4.35	50.16
5.00	1.60	60.18
6.00	1.30	22.65
7.00	0.28	24.06
8.00	0.00	CALMA
9.00	0.02	CALMA
10.00	1.82	23.96
11.00	4.96	24.56
12.00	4.40	23.16
13.00	4.69	22.83
14.00	5.67	22.55
15.00	3.74	22.12
16.00	2.82	22.81
17.00	2.32	25.28
18.00	0.20	<<
19.00	0.00	CALMA
20.00	0.00	CALMA
21.00	0.24	<<
22.00	1.65	340.41
23.00	2.61	340.04
24.00	1.40	355.32

AUTOSTRADA SALERNO-REGGIO CALABRIA *Scheda di Monitoraggio Matrice Atmosfera*

ANDAMENTO VARIABILE VENTO 30-nov-15		
Ora	Velocità	Direzione
	m/s	Gradi
1.00	6.19	358.36
2.00	2.05	16.34
3.00	0.50	359.28
4.00	1.96	0.41
5.00	1.30	342.05
6.00	5.26	341.74
7.00	4.25	341.91
8.00	4.04	337.95
9.00	3.99	339.13
10.00	2.80	337.86
11.00	2.64	338.95
12.00	5.51	338.82
13.00	5.44	339.41
14.00	3.76	338.43
15.00	3.90	358.81
16.00	3.30	339.93
17.00	3.90	337.18
18.00	0.56	22.06
19.00	4.29	357.11
20.00	1.91	358.36
21.00	3.26	358.70
22.00	4.29	358.09
23.00	1.83	338.92
24.00	0.50	355.62

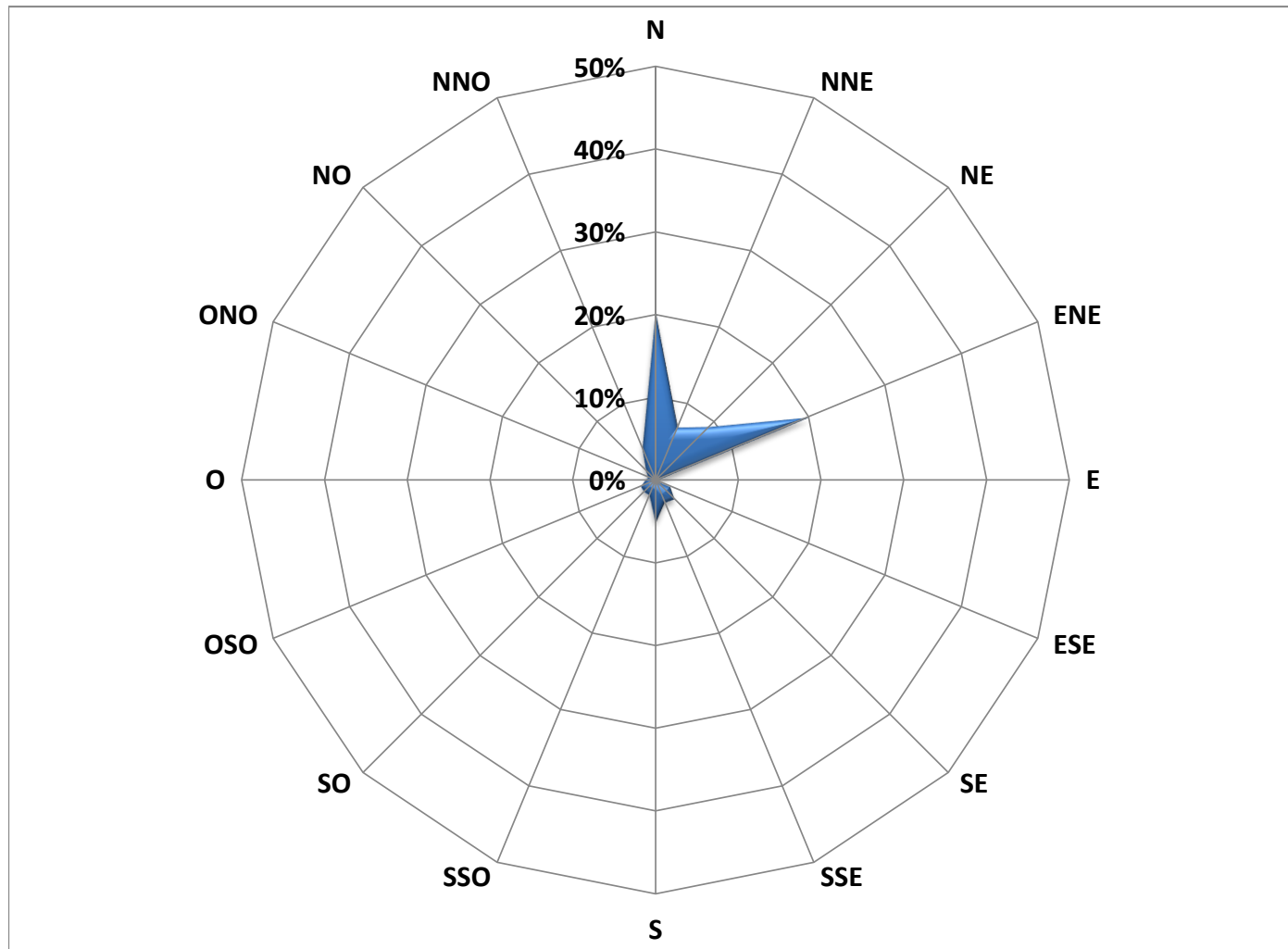
ANDAMENTO VARIABILE VENTO 01-dic-15		
Ora	Velocità	Direzione
	m/s	Gradi
1.00	0.00	CALMA
2.00	0.00	CALMA
3.00	1.00	358.53
4.00	2.97	359.33
5.00	3.36	359.62
6.00	2.63	19.64
7.00	5.09	41.99
8.00	2.83	43.65
9.00	0.53	341.19
10.00	3.22	358.10
11.00	7.88	315.69
12.00	7.51	315.69
13.00	6.46	338.17
14.00	4.90	337.68
15.00	3.26	358.82
16.00	4.79	358.18
17.00	2.72	358.73
18.00	1.10	359.55
19.00	2.85	20.42
20.00	0.52	17.79
21.00	0.07	<<
22.00	0.64	36.65
23.00	1.50	42.75
24.00	1.71	36.39

ANDAMENTO VARIABILE VENTO 02-dic-15		
Ora	Velocità	Direzione
	m/s	Gradi
1.00	0.98	26.36
2.00	4.99	41.62
3.00	7.70	43.71
4.00	4.09	23.95
5.00	1.35	25.54
6.00	0.24	<<
7.00	0.16	<<
8.00	0.15	<<
9.00	0.06	<<
10.00	0.20	<<
11.00	0.49	20.19
12.00	3.09	338.45
13.00	2.86	338.52
14.00	3.87	339.25
15.00	3.11	339.83
16.00	4.43	339.06
17.00	0.82	358.03
18.00	0.00	CALMA
19.00	0.00	CALMA
20.00	0.72	50.31
21.00	0.32	50.30
22.00	0.03	CALMA
23.00	1.26	51.84
24.00	2.50	57.44

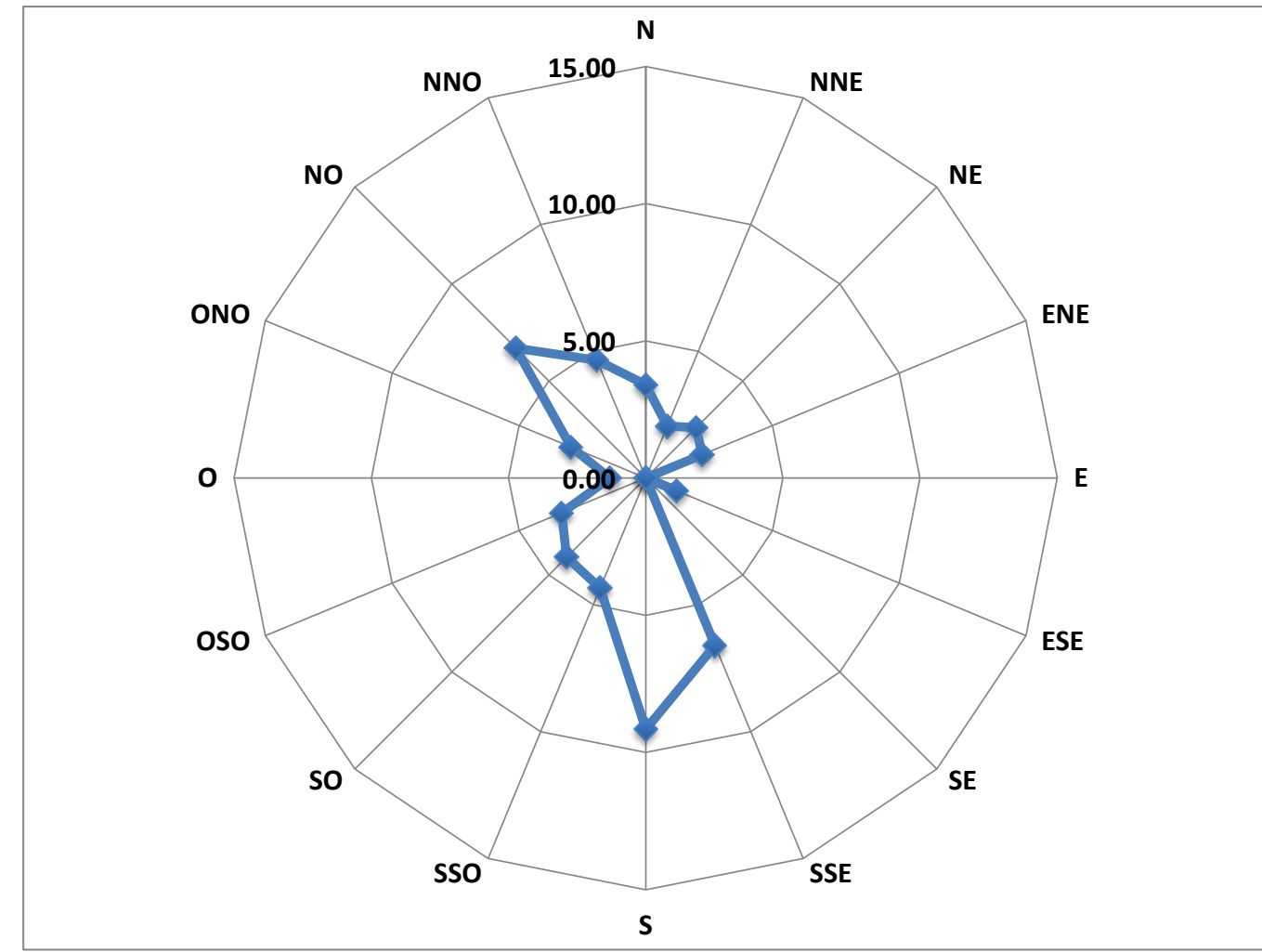
ANDAMENTO VARIABILE VENTO 03-dic-15		
Ora	Velocità	Direzione
	m/s	Gradi
1.00	0.00	CALMA
2.00	0.03	CALMA
3.00	0.00	CALMA
4.00	0.08	CALMA
5.00	0.01	CALMA
6.00	0.22	<<
7.00	<<	<<
8.00	<<	<<
9.00	<<	<<
10.00	<<	<<
11.00	<<	<<
12.00	<<	<<
13.00	<<	<<
14.00	<<	<<
15.00	<<	<<
16.00	<<	<<
17.00	<<	<<
18.00	<<	<<
19.00	<<	<<
20.00	<<	<<
21.00	<<	<<
22.00	<<	<<
23.00	<<	<<
24.00	<<	<<

AUTOSTRADA SALERNO-REGGIO CALABRIA Scheda di Monitoraggio Matrice Atmosfera

Direzione percentuale dei venti relativa all'intero periodo di riferimento, dati espressi in %



Velocità media relativa all'intero periodo di riferimento, dati espressi in m/s



AUTOSTRADA SALERNO-REGGIO CALABRIA *Scheda di Monitoraggio Matrice Atmosfera*

ANDAMENTO PARAMETRI METEOROLOGICI			
18 nov 2015			
	Temperatura	Umidità Relativa	Radiazione Solare
Ora	°C	%	W/m ²
1.00	<<	<<	<<
2.00	<<	<<	<<
3.00	<<	<<	<<
4.00	<<	<<	<<
5.00	<<	<<	<<
6.00	<<	<<	<<
7.00	<<	<<	<<
8.00	<<	<<	<<
9.00	<<	<<	<<
10.00	<<	<<	<<
11.00	<<	<<	<<
12.00	<<	<<	<<
13.00	<<	<<	<<
14.00	<<	<<	<<
15.00	<<	<<	<<
16.00	<<	<<	<<
17.00	<<	<<	<<
18.00	16.28	76.28	0.00
19.00	15.68	78.68	0.00
20.00	15.25	81.03	0.00
21.00	14.96	80.66	0.00
22.00	14.68	81.51	0.00
23.00	14.53	82.26	0.00
24.00	14.30	82.27	0.00

ANDAMENTO PARAMETRI METEOROLOGICI			
19 nov 2015			
	Temperatura	Umidità Relativa	Radiazione Solare
Ora	°C	%	W/m ²
1.00	14.32	82.32	0.00
2.00	15.13	80.16	0.00
3.00	15.70	77.49	0.00
4.00	15.87	77.32	0.00
5.00	15.70	77.70	0.00
6.00	15.76	76.53	0.00
7.00	14.97	75.97	0.00
8.00	15.23	75.17	0.00
9.00	16.37	73.42	0.00
10.00	17.54	71.13	0.00
11.00	18.12	70.18	0.00
12.00	18.50	69.03	0.00
13.00	18.55	68.77	0.00
14.00	18.36	71.43	0.00
15.00	18.30	74.68	0.00
16.00	18.68	69.08	0.00
17.00	17.71	70.76	0.00
18.00	17.40	72.53	0.00
19.00	17.18	73.28	0.00
20.00	17.17	72.60	0.00
21.00	17.15	73.12	0.00
22.00	16.76	76.10	0.00
23.00	16.29	77.26	0.00
24.00	16.19	78.44	0.00

ANDAMENTO PARAMETRI METEOROLOGICI			
20 nov 2015			
	Temperatura	Umidità Relativa	Radiazione Solare
Ora	°C	%	W/m ²
1.00	16.55	80.09	0.00
2.00	16.91	78.31	0.00
3.00	17.00	76.00	0.00
4.00	16.89	76.70	0.00
5.00	15.88	79.22	0.00
6.00	15.08	80.81	0.00
7.00	15.22	81.96	0.00
8.00	16.04	82.97	0.00
9.00	17.21	78.97	0.00
10.00	17.89	76.23	0.00
11.00	19.06	72.96	0.00
12.00	19.58	70.71	0.00
13.00	19.71	68.51	0.00
14.00	19.56	65.29	0.00
15.00	19.78	66.23	0.00
16.00	18.69	68.96	0.00
17.00	17.26	72.33	0.00
18.00	15.56	78.10	0.00
19.00	15.14	75.84	0.00
20.00	15.07	74.18	0.00
21.00	14.70	74.05	0.00
22.00	14.72	75.85	0.00
23.00	15.03	76.27	0.00
24.00	16.16	71.42	0.00

AUTOSTRADA SALERNO-REGGIO CALABRIA *Scheda di Monitoraggio Matrice Atmosfera*

ANDAMENTO PARAMETRI METEOROLOGICI			
21 nov 2015			
	Temperatura	Umidità Relativa	Radiazione Solare
Ora	°C	%	W/m ²
1.00	16.48	70.73	0.00
2.00	16.29	73.28	0.00
3.00	16.78	74.58	0.00
4.00	16.88	76.09	0.00
5.00	17.18	76.17	0.00
6.00	17.62	75.22	0.00
7.00	17.88	71.70	0.00
8.00	17.64	70.92	0.00
9.00	18.44	66.72	0.00
10.00	19.34	63.48	0.00
11.00	21.15	56.82	0.00
12.00	21.63	55.11	0.00
13.00	22.21	54.37	0.00
14.00	19.81	69.18	0.00
15.00	19.77	66.77	0.00
16.00	19.21	72.47	0.00
17.00	18.27	76.03	0.00
18.00	19.16	66.48	0.00
19.00	19.22	66.18	0.00
20.00	18.96	64.64	0.00
21.00	18.64	68.93	0.00
22.00	18.96	64.12	0.00
23.00	18.99	62.93	0.00
24.00	19.16	64.27	0.00

ANDAMENTO PARAMETRI METEOROLOGICI			
22 nov 2015			
	Temperatura	Umidità Relativa	Radiazione Solare
Ora	°C	%	W/m ²
1.00	18.64	71.39	0.00
2.00	19.26	65.79	0.00
3.00	18.87	73.50	0.00
4.00	17.27	82.47	0.00
5.00	16.62	82.75	0.00
6.00	16.09	82.30	0.00
7.00	15.24	81.72	0.00
8.00	14.78	84.24	0.00
9.00	14.70	81.88	0.00
10.00	15.40	71.58	0.00
11.00	15.18	73.98	0.00
12.00	14.84	73.93	0.00
13.00	14.10	74.26	0.00
14.00	14.33	70.77	0.00
15.00	14.98	64.64	0.00
16.00	15.38	63.08	0.00
17.00	15.14	65.75	0.00
18.00	14.60	70.48	0.00
19.00	14.10	72.51	0.00
20.00	13.54	74.71	0.00
21.00	13.66	73.38	0.00
22.00	13.68	72.61	0.00
23.00	13.12	74.82	0.00
24.00	13.21	73.97	0.00

ANDAMENTO PARAMETRI METEOROLOGICI			
23 nov 2015			
	Temperatura	Umidità Relativa	Radiazione Solare
Ora	°C	%	W/m ²
1.00	12.92	74.08	0.00
2.00	12.81	73.62	0.00
3.00	13.14	72.36	0.00
4.00	13.34	71.47	0.00
5.00	13.42	71.00	0.00
6.00	13.31	70.58	0.00
7.00	13.51	68.66	0.00
8.00	13.78	67.33	0.00
9.00	14.33	65.63	0.00
10.00	15.65	64.23	0.00
11.00	16.44	61.94	0.00
12.00	17.17	60.52	0.00
13.00	17.18	61.33	0.00
14.00	17.64	58.95	0.00
15.00	17.10	65.37	0.00
16.00	16.38	74.76	0.00
17.00	15.68	78.36	0.00
18.00	14.75	84.12	0.00
19.00	14.37	87.41	0.00
20.00	14.30	88.43	0.00
21.00	14.12	89.41	0.00
22.00	14.13	89.00	0.00
23.00	13.69	89.00	0.00
24.00	13.79	89.23	0.00

AUTOSTRADA SALERNO-REGGIO CALABRIA *Scheda di Monitoraggio Matrice Atmosfera*

ANDAMENTO PARAMETRI METEOROLOGICI			
24 nov 2015			
	Temperatura	Umidità Relativa	Radiazione Solare
Ora	°C	%	W/m ²
1.00	13.93	90.00	0.00
2.00	14.20	90.06	0.00
3.00	14.15	89.93	0.00
4.00	13.54	88.49	0.00
5.00	13.25	86.96	0.00
6.00	13.37	81.00	0.00
7.00	13.13	80.31	0.00
8.00	13.74	81.66	0.00
9.00	15.51	82.13	0.00
10.00	16.48	84.18	0.00
11.00	17.99	82.24	0.00
12.00	18.57	79.65	0.00
13.00	18.72	78.28	0.00
14.00	19.15	74.34	0.00
15.00	19.15	73.10	0.00
16.00	16.58	81.87	0.00
17.00	14.71	88.08	0.00
18.00	14.91	87.57	0.00
19.00	15.06	86.51	0.00
20.00	15.06	85.04	0.00
21.00	15.20	86.70	0.00
22.00	15.60	88.21	0.00
23.00	16.05	87.67	0.00
24.00	16.32	86.22	0.00

ANDAMENTO PARAMETRI METEOROLOGICI			
25 nov 2015			
	Temperatura	Umidità Relativa	Radiazione Solare
Ora	°C	%	W/m ²
1.00	15.71	87.03	0.00
2.00	15.87	86.27	0.00
3.00	15.10	82.69	0.00
4.00	15.17	82.57	0.00
5.00	15.01	85.39	0.00
6.00	14.14	88.02	0.00
7.00	14.10	85.43	0.00
8.00	13.76	84.64	0.00
9.00	14.98	82.12	0.00
10.00	16.31	77.13	0.00
11.00	15.26	81.61	0.00
12.00	13.66	88.36	0.00
13.00	14.19	84.95	0.00
14.00	13.99	83.76	0.00
15.00	13.31	89.19	0.00
16.00	13.38	90.66	0.00
17.00	13.92	84.74	0.00
18.00	13.81	77.78	0.00
19.00	13.95	69.03	0.00
20.00	13.84	66.11	0.00
21.00	13.58	70.83	0.00
22.00	12.09	82.18	0.00
23.00	12.77	75.99	0.00
24.00	12.15	79.13	0.00

ANDAMENTO PARAMETRI METEOROLOGICI			
26 nov 2015			
	Temperatura	Umidità Relativa	Radiazione Solare
Ora	°C	%	W/m ²
1.00	12.01	76.72	0.00
2.00	11.81	75.44	0.00
3.00	12.05	71.96	0.00
4.00	11.88	71.58	0.00
5.00	12.48	69.79	0.00
6.00	12.76	70.03	0.00
7.00	13.49	69.32	0.00
8.00	13.88	76.54	0.00
9.00	14.41	75.42	0.00
10.00	14.98	73.35	0.00
11.00	15.39	71.99	0.00
12.00	15.71	71.23	0.00
13.00	15.13	71.76	0.00
14.00	14.40	74.21	0.00
15.00	13.81	74.68	0.00
16.00	13.67	71.25	0.00
17.00	13.88	68.72	0.00
18.00	12.59	70.46	0.00
19.00	11.39	72.13	0.00
20.00	11.08	71.66	0.00
21.00	12.12	66.27	0.00
22.00	11.98	68.59	0.00
23.00	12.18	66.03	0.00
24.00	11.96	68.41	0.00

AUTOSTRADA SALERNO-REGGIO CALABRIA *Scheda di Monitoraggio Matrice Atmosfera*

ANDAMENTO PARAMETRI METEOROLOGICI			
27 nov 2015			
Ora	Temperatura	Umidità Relativa	Radiazione Solare
	°C	%	W/m ²
1.00	12.18	68.97	0.00
2.00	12.95	64.14	0.00
3.00	12.55	64.81	0.00
4.00	11.86	69.87	0.00
5.00	11.17	73.21	0.00
6.00	11.07	73.05	0.00
7.00	11.24	74.37	0.00
8.00	11.12	76.05	0.00
9.00	11.34	73.57	0.00
10.00	11.45	73.46	0.00
11.00	11.47	76.71	0.00
12.00	12.00	79.35	0.00
13.00	12.86	77.48	0.00
14.00	14.42	67.47	0.00
15.00	14.50	66.08	0.00
16.00	14.42	66.55	0.00
17.00	13.27	73.45	0.00
18.00	12.82	79.08	0.00
19.00	12.30	80.16	0.00
20.00	11.78	83.46	0.00
21.00	11.67	82.80	0.00
22.00	11.92	78.67	0.00
23.00	11.73	82.01	0.00
24.00	11.27	86.08	0.00

ANDAMENTO PARAMETRI METEOROLOGICI			
28 nov 2015			
Ora	Temperatura	Umidità Relativa	Radiazione Solare
	°C	%	W/m ²
1.00	11.36	85.51	0.00
2.00	11.36	85.53	0.00
3.00	11.62	87.04	0.00
4.00	12.21	87.32	0.00
5.00	12.94	80.42	0.00
6.00	13.41	75.37	0.00
7.00	12.69	80.56	0.00
8.00	12.96	82.01	0.00
9.00	14.18	70.05	0.00
10.00	14.79	64.58	0.00
11.00	15.29	61.63	0.00
12.00	15.38	65.02	0.00
13.00	15.18	70.66	0.00
14.00	16.22	63.08	0.00
15.00	15.37	66.52	0.00
16.00	14.14	78.46	0.00
17.00	13.43	85.10	0.00
18.00	13.16	86.38	0.00
19.00	13.05	84.63	0.00
20.00	13.26	82.46	0.00
21.00	13.00	85.12	0.00
22.00	13.15	82.32	0.00
23.00	12.25	81.96	0.00
24.00	11.51	80.12	0.00

ANDAMENTO PARAMETRI METEOROLOGICI			
29 nov 2015			
Ora	Temperatura	Umidità Relativa	Radiazione Solare
	°C	%	W/m ²
1.00	11.09	79.15	0.00
2.00	11.02	78.93	0.00
3.00	11.79	78.13	0.00
4.00	12.17	77.97	0.00
5.00	12.19	78.40	0.00
6.00	12.53	83.23	0.00
7.00	11.62	88.97	0.00
8.00	11.44	90.63	0.00
9.00	12.17	91.10	0.00
10.00	13.50	87.34	0.00
11.00	15.32	72.69	0.00
12.00	16.16	66.27	0.00
13.00	16.06	65.77	0.00
14.00	15.65	68.76	0.00
15.00	15.83	69.20	0.00
16.00	15.68	68.85	0.00
17.00	14.87	71.83	0.00
18.00	14.45	74.41	0.00
19.00	14.08	74.14	0.00
20.00	13.97	74.69	0.00
21.00	13.24	78.74	0.00
22.00	14.28	76.35	0.00
23.00	14.43	74.12	0.00
24.00	13.99	73.76	0.00

AUTOSTRADA SALERNO-REGGIO CALABRIA *Scheda di Monitoraggio Matrice Atmosfera*

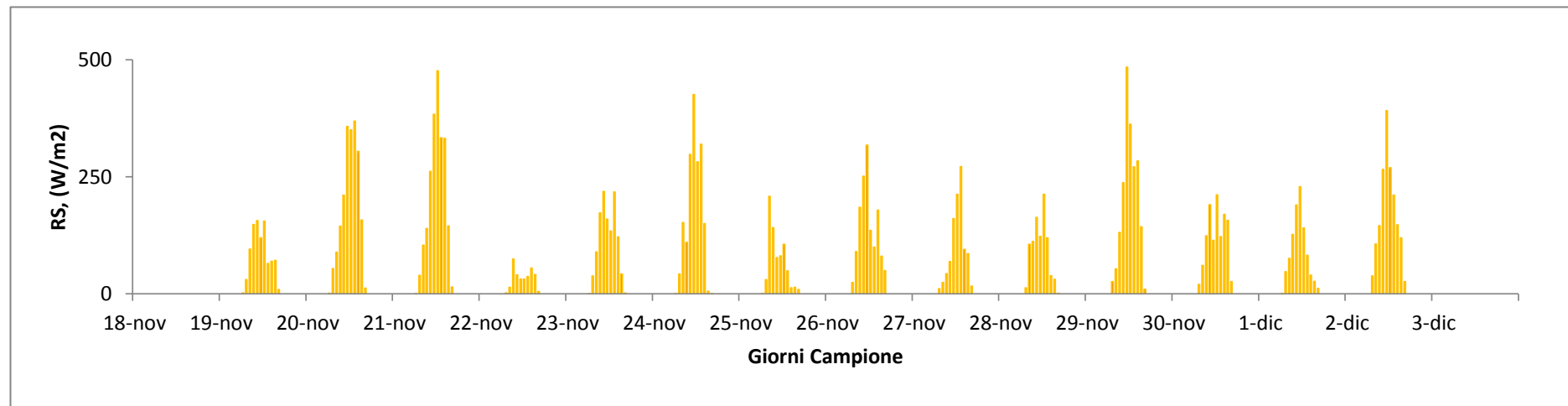
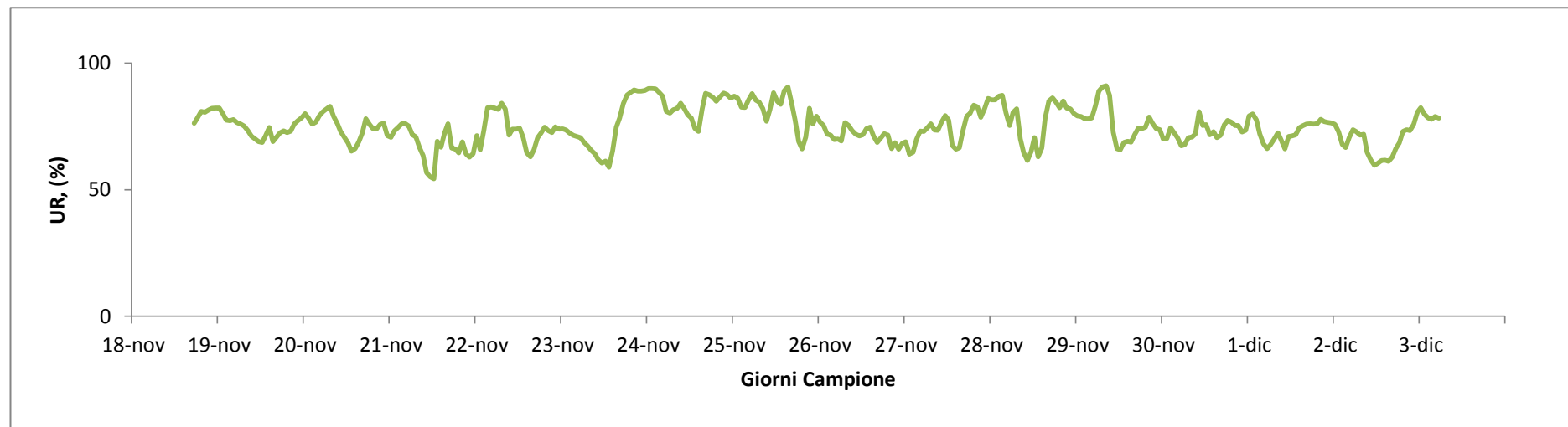
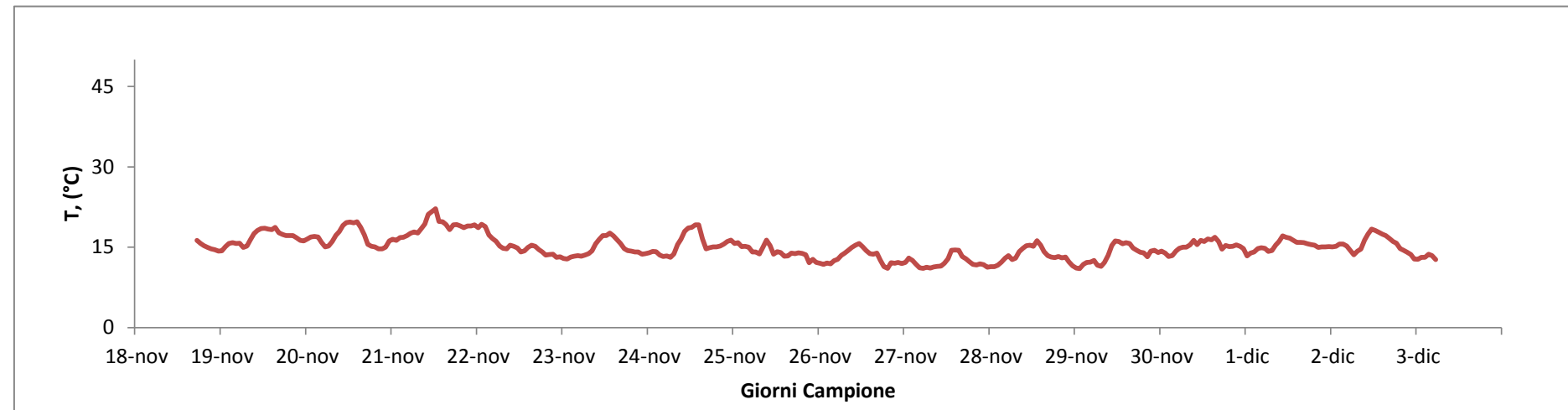
ANDAMENTO PARAMETRI METEOROLOGICI			
30 nov 2015			
	Temperatura	Umidità Relativa	Radiazione Solare
Ora	>	%	W/m ²
1.00	14.30	70.07	0.00
2.00	13.91	70.31	0.00
3.00	13.29	74.51	0.00
4.00	13.42	72.63	0.00
5.00	14.28	70.55	0.00
6.00	14.80	67.38	0.00
7.00	15.00	67.87	0.00
8.00	15.01	70.57	0.00
9.00	15.44	70.88	0.00
10.00	16.28	72.11	0.00
11.00	15.49	80.84	0.00
12.00	16.26	75.36	0.00
13.00	16.09	75.78	0.00
14.00	16.52	71.72	0.00
15.00	16.40	72.96	0.00
16.00	16.83	70.58	0.00
17.00	16.06	71.52	0.00
18.00	14.65	75.62	0.00
19.00	15.30	77.46	0.00
20.00	15.10	76.79	0.00
21.00	15.19	75.45	0.00
22.00	15.41	75.43	0.00
23.00	15.16	72.81	0.00
24.00	14.73	73.46	0.00

ANDAMENTO PARAMETRI METEOROLOGICI			
01 dic 2015			
	Temperatura	Umidità Relativa	Radiazione Solare
Ora	°C	%	W/m ²
1.00	13.35	79.19	0.00
2.00	13.91	79.96	0.00
3.00	14.10	77.66	0.00
4.00	14.74	72.03	0.00
5.00	14.92	68.13	0.00
6.00	14.79	66.31	0.00
7.00	14.22	67.87	0.00
8.00	14.37	70.02	0.00
9.00	15.39	72.50	0.00
10.00	16.06	69.57	0.00
11.00	17.12	66.14	0.00
12.00	16.85	71.07	0.00
13.00	16.69	71.33	0.00
14.00	16.28	71.68	0.00
15.00	15.93	74.47	0.00
16.00	15.92	75.29	0.00
17.00	15.83	76.00	0.00
18.00	15.65	76.08	0.00
19.00	15.49	76.01	0.00
20.00	15.36	76.11	0.00
21.00	14.96	77.88	0.00
22.00	15.06	76.99	0.00
23.00	15.09	76.59	0.00
24.00	15.12	76.39	0.00

ANDAMENTO PARAMETRI METEOROLOGICI			
02 dic 2015			
	Temperatura	Umidità Relativa	Radiazione Solare
Ora	°C	%	W/m ²
1.00	15.07	75.89	0.00
2.00	15.19	72.91	0.00
3.00	15.57	67.95	0.00
4.00	15.60	66.67	0.00
5.00	15.24	70.77	0.00
6.00	14.44	73.73	0.00
7.00	13.59	72.92	0.00
8.00	14.29	71.61	0.00
9.00	14.63	71.92	0.00
10.00	16.34	64.82	0.00
11.00	17.44	61.85	0.00
12.00	18.41	59.67	0.00
13.00	18.10	60.46	0.00
14.00	17.82	61.54	0.00
15.00	17.45	61.73	0.00
16.00	17.18	61.20	0.00
17.00	16.64	62.94	0.00
18.00	16.05	66.39	0.00
19.00	15.75	68.45	0.00
20.00	14.76	73.11	0.00
21.00	14.45	73.70	0.00
22.00	14.08	73.36	0.00
23.00	13.65	75.86	0.00
24.00	12.80	80.68	0.00

AUTOSTRADA SALERNO-REGGIO CALABRIA Scheda di Monitoraggio Matrice Atmosfera

ANDAMENTO PARAMETRI METEOROLOGICI			
03 dic 2015			
Ora	Temperatura	Umidità Relativa	Radiazione Solare
	°C	%	W/m ²
1.00	12.72	82.43	0.00
2.00	13.10	79.84	0.00
3.00	13.10	78.44	0.00
4.00	13.67	77.90	0.00
5.00	13.41	78.99	0.00
6.00	12.71	78.30	0.00
7.00	<<	<<	<<
8.00	<<	<<	<<
9.00	<<	<<	<<
10.00	<<	<<	<<
11.00	<<	<<	<<
12.00	<<	<<	<<
13.00	<<	<<	<<
14.00	<<	<<	<<
15.00	<<	<<	<<
16.00	<<	<<	<<
17.00	<<	<<	<<
18.00	<<	<<	<<
19.00	<<	<<	<<
20.00	<<	<<	<<
21.00	<<	<<	<<
22.00	<<	<<	<<
23.00	<<	<<	<<
24.00	<<	<<	<<



T=Temperatura espressa in °C
UR=Umidità Relativa espressa in percentuale
RS=Radiazione Solare
Espressa in W/m²