

ESECUZIONE E GESTIONE DELLE ATTIVITA' DI MONITORAGGIO IN CORSO D'OPERA E POST OPERAM DELLE COMPONENTI AMBIENTALI DEI LUOGHI INTERESSATI DALLA REALIZZAZIONE DELLE OPERE APPARTENENTI AL MACROLOTTO VI, NONCHE' ATTIVITA' DI MONITORAGGIO IN CORSO D'OPERA DELL'AREA DI CAMPO CALABRO

III CAMPAGNA 2015

COMPONENTE ATMOSFERA

Rapporto di Prova

CODICE: **PODG87PRATM01NL0120150914**

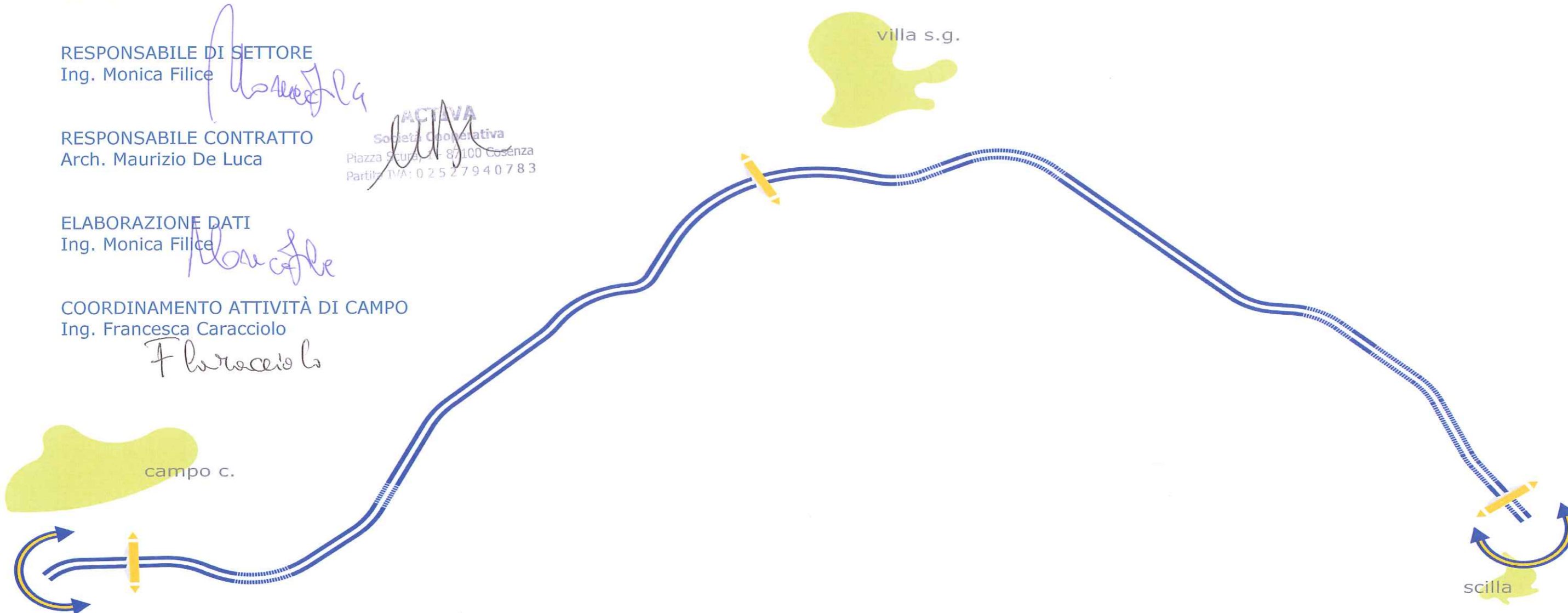
RESPONSABILE DI SETTORE
Ing. Monica Filice

RESPONSABILE CONTRATTO
Arch. Maurizio De Luca

ELABORAZIONE DATI
Ing. Monica Filice

COORDINAMENTO ATTIVITÀ DI CAMPO
Ing. Francesca Caracciolo

ACTIVA
Società Cooperativa
Piazza Scura, 1 - 87100 Cosenza
Partita IVA: 02527940783



AUTOSTRADA SALERNO-REGGIO CALABRIA Scheda di Monitoraggio Matrice Atmosfera

INQUADRAMENTO TERRITORIALE

Pto monitoraggio	PRATM01	
Ubicazione	Scilla (RC)	
Coordinate	38° 14' 57.92" N	15° 42' 58.36" E

POSIZIONE DEL RILIEVO



DISTANZA DALLE PRINCIPALI SORGENTI INQUINANTI

x	AUTOSTRADA	100 m	x	STRADA VICINALE	0 m
	INDUSTRIE	-----		FERMATA AUTOBUS	-----
	CANTIERI	-----		STRADA STATALE	-----
	PARCHEGGIO	-----			-----

DISTANZA DAI PRINCIPALI RICETTORI SENSIBILI

SCUOLA	----	AREA DI PREGIO NATURALISTICO	----
RESIDENZIALE ISOLATO	----	EDIFICIO DI CULTO	----
RESIDENZIALE PRODUTTIVO	----	RESIDENZIALE AGGLOMERATO	0 m
EDIFICIO STORICO	----	RUDERE ASSIMILABILE	----
AREA AGRICOLA	----	ATTIVITA' PRODUTTIVA	----

DOCUMENTAZIONE FOTOGRAFICA



MONITORAGGIO QUALITA' DELL'ARIA

DATA INIZIO	14 SETTEMBRE 2015	DATA FINE	29 OTTOBRE 2015
NOTE	Non si sono verificati eventi da segnalare		

AUTOSTRADA SALERNO-REGGIO CALABRIA *Scheda di Monitoraggio Matrice Atmosfera*

ANDAMENTO INQUINANTI AERODISPERSI ~ 14 set 2015								
Ora	O ₃	NO ₂	NO	NO _x	CO	PM ₁₀	PM _{2.5}	SO ₂
	media oraria	media oraria	media oraria	media oraria	media oraria	media oraria	media oraria	media oraria
	µg/m ³	µg/m ³	µg/m ³	µg/m ³	mg/m ³	µg/m ³	µg/m ³	µg/m ³
1.00	<<	<<	<<	<<	<<	<<	<<	<<
2.00	<<	<<	<<	<<	<<	<<	<<	<<
3.00	<<	<<	<<	<<	<<	<<	<<	<<
4.00	<<	<<	<<	<<	<<	<<	<<	<<
5.00	<<	<<	<<	<<	<<	<<	<<	<<
6.00	<<	<<	<<	<<	<<	<<	<<	<<
7.00	<<	<<	<<	<<	<<	<<	<<	<<
8.00	<<	<<	<<	<<	<<	<<	<<	<<
9.00	<<	<<	<<	<<	<<	<<	<<	<<
10.00	<<	<<	<<	<<	<<	<<	<<	<<
11.00	<<	<<	<<	<<	<<	<<	<<	<<
12.00	<<	<<	<<	<<	<<	<<	<<	<<
13.00	<<	<<	<<	<<	<<	<<	<<	<<
14.00	<<	<<	<<	<<	<<	<<	<<	<<
15.00	<<	<<	<<	<<	<<	<<	<<	<<
16.00	<<	<<	<<	<<	<<	<<	<<	<<
17.00	<<	<<	<<	<<	<<	<<	<<	<<
18.00	106.17	<<	<<	<<	<<	15.01	12.73	4.21
19.00	95.38	<<	<<	<<	<<	16.35	12.91	3.69
20.00	100.00	<<	<<	<<	<<	16.63	13.13	3.77
21.00	79.04	<<	<<	<<	<<	17.81	13.45	3.56
22.00	68.22	<<	<<	<<	<<	19.14	13.82	3.47
23.00	53.81	<<	<<	<<	<<	17.54	13.49	3.28
24.00	62.48	<<	<<	<<	<<	15.79	12.55	3.35

Massimo	106.17	<<	<<	<<	<<	19.14	13.82	4.21
Minimo	53.81	<<	<<	<<	<<	15.01	12.55	3.28
Media	80.73	<<	<<	<<	<<	16.90	13.15	3.62
Dev. St.	20.21	<<	<<	<<	<<	1.38	0.46	0.31

ANDAMENTO INQUINANTI AERODISPERSI ~ 15 set 2015								
Ora	O ₃	NO ₂	NO	NO _x	CO	PM ₁₀	PM _{2.5}	SO ₂
	media oraria	media oraria	media oraria	media oraria	media oraria	media oraria	media oraria	media oraria
	µg/m ³	µg/m ³	µg/m ³	µg/m ³	mg/m ³	µg/m ³	µg/m ³	µg/m ³
1.00	63.13	0.44	0.07	0.55	<<	15.94	13.08	3.35
2.00	60.99	1.46	0.31	1.93	<<	16.80	13.13	3.36
3.00	75.40	2.99	0.19	3.28	<<	18.86	13.20	3.44
4.00	68.56	0.32	0.17	0.58	<<	18.64	13.04	3.40
5.00	63.60	1.02	0.39	1.62	<<	19.31	13.51	3.38
6.00	59.10	13.54	0.32	14.03	<<	12.66	8.87	3.32
7.00	37.07	57.95	0.96	59.41	<<	15.38	10.77	3.11
8.00	31.13	61.90	2.50	65.73	<<	19.10	13.37	3.02
9.00	45.37	27.19	1.15	28.95	<<	19.54	13.68	3.20
10.00	66.09	31.06	0.80	32.29	<<	19.67	13.77	2.82
11.00	80.73	23.16	0.69	24.21	<<	17.52	10.91	2.91
12.00	91.67	18.04	0.14	18.26	<<	18.68	11.76	3.44
13.00	97.27	12.76	0.27	13.18	<<	17.88	12.48	4.18
14.00	99.01	10.22	0.25	10.60	<<	21.94	13.84	4.30
15.00	84.56	<<	<<	<<	<<	23.79	14.49	5.24
16.00	100.07	15.64	0.27	16.06	0.22	27.50	18.00	4.64
17.00	98.69	16.95	0.18	17.23	0.35	23.63	15.27	5.23
18.00	85.00	22.03	0.20	22.33	0.33	24.25	14.30	4.36
19.00	40.14	43.18	1.04	44.78	0.43	26.92	14.72	4.77
20.00	42.10	47.64	0.60	48.56	0.48	24.19	13.91	4.86
21.00	39.26	38.95	0.74	40.09	0.51	20.32	12.57	5.09
22.00	51.66	26.45	0.66	27.47	0.47	17.70	11.69	5.10
23.00	45.21	28.70	0.44	29.37	0.46	18.15	11.32	4.96
24.00	53.00	26.24	0.32	26.73	0.45	15.59	10.76	4.58

Massimo	100.07	61.90	2.50	65.73	0.51	27.50	18.00	5.24
Minimo	31.13	0.32	0.07	0.55	0.22	12.66	8.87	2.82
Media	65.78	22.95	0.55	23.79	0.41	19.75	13.02	4.00
Dev. St.	22.17	17.82	0.53	18.45	0.09	3.71	1.84	0.84

AUTOSTRADA SALERNO-REGGIO CALABRIA *Scheda di Monitoraggio Matrice Atmosfera*

ANDAMENTO INQUINANTI AERODISPERSI ~ 16 set 2015								
Ora	O ₃	NO ₂	NO	NO _x	CO	PM ₁₀	PM _{2.5}	SO ₂
	media oraria	media oraria	media oraria	media oraria	media oraria	media oraria	media oraria	media oraria
	µg/m ³	µg/m ³	µg/m ³	µg/m ³	mg/m ³	µg/m ³	µg/m ³	µg/m ³
1.00	41.55	28.50	0.42	29.14	0.44	16.93	11.25	4.37
2.00	57.45	19.57	0.52	20.36	0.45	15.88	9.37	3.96
3.00	59.82	8.55	0.32	9.05	0.43	13.45	8.94	3.87
4.00	57.89	5.39	0.33	5.89	0.44	14.28	8.40	3.54
5.00	69.49	8.76	0.47	9.48	0.40	14.42	7.93	3.13
6.00	50.98	16.59	0.36	17.15	0.13	13.45	8.41	2.84
7.00	31.59	61.63	1.63	64.14	0.19	24.10	13.48	2.26
8.00	25.68	71.52	3.71	77.21	0.20	24.43	12.06	2.61
9.00	29.66	97.19	4.68	104.36	0.27	22.01	13.29	2.42
10.00	61.57	23.75	0.44	24.42	0.30	19.37	11.90	3.59
11.00	86.89	13.62	0.39	14.22	0.29	18.91	11.39	3.11
12.00	96.25	9.43	0.47	10.15	0.25	20.44	10.25	3.23
13.00	107.44	21.78	0.84	23.07	0.23	19.60	11.41	3.07
14.00	114.77	<<	<<	<<	<<	22.02	14.34	3.29
15.00	111.50	12.84	0.38	13.43	0.23	28.75	19.09	3.35
16.00	110.87	12.86	0.42	13.50	0.23	21.12	12.08	3.42
17.00	87.58	21.38	0.42	22.02	0.21	33.27	16.17	3.53
18.00	67.87	36.32	0.43	36.98	0.22	24.30	12.66	2.83
19.00	43.89	38.29	0.57	39.17	0.20	19.01	11.42	3.13
20.00	51.80	33.84	0.62	34.80	0.33	20.40	11.47	2.74
21.00	38.66	48.40	0.71	49.48	0.44	18.86	11.55	2.60
22.00	62.89	19.53	0.49	20.28	0.50	16.55	9.32	2.68
23.00	60.56	14.32	0.24	14.68	0.50	17.09	8.84	2.15
24.00	58.31	10.73	0.23	11.07	0.50	16.67	8.72	2.09

Massimo	114.77	97.19	4.68	104.36	0.50	33.27	19.09	4.37
Minimo	25.68	5.39	0.23	5.89	0.13	13.45	7.93	2.09
Media	66.04	27.60	0.83	28.87	0.32	19.80	11.41	3.08
Dev. St.	26.95	22.93	1.11	24.45	0.12	4.79	2.65	0.58

ANDAMENTO INQUINANTI AERODISPERSI ~ 17 set 2015								
Ora	O ₃	NO ₂	NO	NO _x	CO	PM ₁₀	PM _{2.5}	SO ₂
	media oraria	media oraria	media oraria	media oraria	media oraria	media oraria	media oraria	media oraria
	µg/m ³	µg/m ³	µg/m ³	µg/m ³	mg/m ³	µg/m ³	µg/m ³	µg/m ³
1.00	54.42	15.97	0.37	16.53	0.21	13.61	7.21	1.99
2.00	52.44	15.71	0.30	16.18	0.18	13.59	7.31	1.49
3.00	51.70	9.18	0.44	9.86	0.20	13.50	6.98	2.22
4.00	51.33	6.52	0.34	7.04	0.20	14.59	7.68	4.87
5.00	32.23	25.95	0.78	27.15	0.17	14.70	7.86	5.17
6.00	23.29	34.92	0.55	35.76	0.24	14.62	8.38	4.51
7.00	9.30	152.97	23.89	189.61	0.27	20.29	11.63	4.52
8.00	13.66	114.63	3.71	120.31	0.31	25.17	13.14	5.52
9.00	26.11	100.78	9.77	115.76	0.36	26.65	17.76	4.57
10.00	47.04	42.15	0.82	43.41	0.39	24.72	13.13	4.39
11.00	50.47	50.89	0.93	52.33	0.35	24.86	12.84	4.64
12.00	87.49	14.13	0.18	14.41	0.31	18.92	9.90	4.42
13.00	97.58	<<	<<	<<	<<	20.39	10.63	4.58
14.00	102.93	35.96	0.41	36.59	0.28	20.23	12.20	4.77
15.00	119.14	16.28	0.39	16.89	0.28	21.13	12.27	4.59
16.00	99.99	22.30	0.58	23.20	0.31	22.02	12.78	4.82
17.00	95.78	33.72	0.57	34.60	0.29	23.70	13.39	4.47
18.00	77.91	33.56	0.68	34.59	0.29	22.56	11.71	4.36
19.00	78.53	33.96	0.52	34.76	0.24	24.25	13.25	4.69
20.00	83.20	25.91	0.25	26.30	0.30	23.68	12.92	4.48
21.00	83.17	25.83	0.37	26.39	0.40	18.49	10.64	4.77
22.00	78.38	12.47	0.26	12.86	0.45	17.44	9.98	4.89
23.00	60.70	16.65	0.35	17.19	0.33	16.55	9.53	4.41
24.00	57.41	8.76	0.39	9.35	0.24	14.57	8.38	3.72

Massimo	119.14	152.97	23.89	189.61	0.45	26.65	17.76	5.52
Minimo	9.30	6.52	0.18	7.04	0.17	13.50	6.98	1.49
Media	63.93	36.92	2.04	40.05	0.29	19.59	10.90	4.29
Dev. St.	29.91	36.77	5.18	43.78	0.07	4.33	2.66	0.98

AUTOSTRADA SALERNO-REGGIO CALABRIA

Scheda di Monitoraggio Matrice Atmosfera

ANDAMENTO INQUINANTI AERODISPERSI ~ 18 set 2015								
Ora	O ₃	NO ₂	NO	NO _x	CO	PM ₁₀	PM _{2,5}	SO ₂
	media oraria	media oraria	media oraria	media oraria	media oraria	media oraria	media oraria	media oraria
	µg/m ³	µg/m ³	µg/m ³	µg/m ³	mg/m ³	µg/m ³	µg/m ³	µg/m ³
1.00	62.99	8.68	0.40	9.29	0.23	15.39	8.78	4.11
2.00	84.49	3.67	0.08	3.79	0.23	16.94	8.69	3.71
3.00	70.77	2.23	0.04	2.28	0.23	18.88	10.31	3.41
4.00	67.60	2.36	0.37	2.93	0.23	15.32	8.53	3.18
5.00	62.93	5.43	0.55	6.27	0.19	16.62	8.82	3.65
6.00	45.02	14.68	0.20	14.99	0.23	16.21	8.42	2.83
7.00	10.65	123.68	5.14	131.56	0.29	22.02	12.46	2.86
8.00	19.23	73.22	1.23	75.11	0.36	23.75	12.94	3.75
9.00	57.13	40.71	0.56	41.57	0.40	22.70	13.58	3.52
10.00	75.31	20.12	0.45	20.82	0.36	46.04	15.48	3.20
11.00	79.03	34.62	0.57	35.49	0.33	43.83	22.07	3.12
12.00	94.18	<<	<<	<<	<<	30.45	14.88	3.09
13.00	115.79	4.99	0.12	5.17	0.30	26.92	14.88	3.35
14.00	106.04	9.92	0.21	10.24	0.28	25.92	15.20	3.74
15.00	103.90	5.69	0.36	6.24	0.24	24.68	13.72	3.21
16.00	102.57	8.47	0.48	9.21	0.25	23.58	13.09	3.71
17.00	72.70	26.59	0.36	27.14	0.30	28.09	18.89	3.94
18.00	48.41	22.37	0.57	23.24	0.22	17.58	10.41	3.18
19.00	46.24	21.45	0.25	21.84	0.31	13.99	8.95	3.40
20.00	53.91	18.06	0.33	18.57	0.34	13.71	8.84	3.43
21.00	62.53	13.59	0.55	14.42	0.38	15.01	8.76	3.37
22.00	79.61	6.48	0.41	7.11	0.37	18.35	10.23	3.63
23.00	77.07	8.87	0.10	9.03	0.43	18.35	11.99	3.67
24.00	61.96	6.70	0.64	7.68	0.39	15.57	8.95	3.60

Massimo	115.79	123.68	5.14	131.56	0.43	46.04	22.07	4.11
Minimo	10.65	2.23	0.04	2.28	0.19	13.71	8.42	2.83
Media	69.17	20.98	0.61	21.91	0.30	22.08	12.04	3.44
Dev. St.	25.58	27.56	1.02	28.97	0.07	8.52	3.61	0.32

ANDAMENTO INQUINANTI AERODISPERSI ~ 19 set 2015								
Ora	O ₃	NO ₂	NO	NO _x	CO	PM ₁₀	PM _{2,5}	SO ₂
	media oraria	media oraria	media oraria	media oraria	media oraria	media oraria	media oraria	media oraria
	µg/m ³	µg/m ³	µg/m ³	µg/m ³	mg/m ³	µg/m ³	µg/m ³	µg/m ³
1.00	81.07	5.64	0.32	6.13	0.24	14.77	9.79	3.22
2.00	66.18	3.80	0.31	4.27	0.25	14.24	8.43	2.63
3.00	64.59	1.99	0.29	2.44	0.24	15.15	8.67	2.68
4.00	65.77	1.83	0.17	2.10	0.24	15.62	8.38	2.42
5.00	69.23	2.74	0.23	3.09	0.21	15.93	8.85	2.52
6.00	76.52	6.64	0.31	7.11	0.22	18.44	10.03	1.90
7.00	46.83	26.86	0.20	27.16	0.24	18.77	10.96	1.46
8.00	46.73	25.64	0.34	26.16	0.27	23.72	12.98	2.41
9.00	69.12	15.21	0.43	15.87	0.27	18.66	10.97	2.94
10.00	73.10	8.27	0.16	8.52	0.23	20.05	11.21	2.57
11.00	72.26	<<	<<	<<	<<	20.28	11.49	2.76
12.00	79.89	17.65	0.65	18.65	0.21	24.95	13.05	2.59
13.00	84.83	5.28	0.34	5.80	0.16	27.17	13.55	2.58
14.00	85.14	2.43	0.24	2.79	0.20	25.25	12.65	2.84
15.00	77.23	2.09	0.30	2.55	0.19	21.15	11.45	2.81
16.00	76.93	2.59	0.44	3.26	0.19	19.34	9.71	2.95
17.00	71.58	3.77	0.47	4.49	0.33	22.60	10.94	3.23
18.00	37.03	17.20	0.32	17.69	0.37	18.93	9.94	3.41
19.00	42.33	20.87	0.27	21.29	0.45	17.07	9.43	3.24
20.00	43.37	20.12	0.55	20.96	0.46	17.50	9.17	3.08
21.00	46.79	16.23	0.34	16.75	0.50	19.50	10.51	3.46
22.00	43.61	12.18	0.25	12.57	0.49	23.72	11.41	3.14
23.00	29.47	17.30	0.37	17.86	0.26	24.01	12.77	2.96
24.00	40.08	13.94	0.39	14.53	0.19	22.37	11.42	2.91

Massimo	85.14	26.86	0.65	27.16	0.50	27.17	13.55	3.46
Minimo	29.47	1.83	0.16	2.10	0.16	14.24	8.38	1.46
Media	62.07	10.88	0.33	11.39	0.28	19.97	10.74	2.78
Dev. St.	17.19	8.18	0.12	8.22	0.10	3.63	1.54	0.46

AUTOSTRADA SALERNO-REGGIO CALABRIA *Scheda di Monitoraggio Matrice Atmosfera*

ANDAMENTO INQUINANTI AERODISPERSI ~ 20 set 2015								
	O ₃	NO ₂	NO	NO _x	CO	PM ₁₀	PM _{2,5}	SO ₂
Ora	media oraria	media oraria	media oraria	media oraria	media oraria	media oraria	media oraria	media oraria
	µg/m ³	µg/m ³	µg/m ³	µg/m ³	mg/m ³	µg/m ³	µg/m ³	µg/m ³
1.00	26.00	20.26	0.21	20.58	0.15	24.94	12.25	2.93
2.00	29.51	12.46	0.32	12.95	0.16	24.47	12.26	3.00
3.00	44.12	4.96	0.41	5.59	0.13	22.97	11.97	2.51
4.00	48.37	5.36	0.41	5.98	0.41	24.60	12.63	2.82
5.00	38.26	4.04	0.14	4.25	0.35	24.00	13.15	2.89
6.00	57.53	4.00	0.31	4.48	0.17	23.48	12.93	2.86
7.00	50.13	3.22	0.42	3.87	0.17	14.01	9.47	2.87
8.00	32.92	9.42	0.54	10.25	0.21	11.41	8.52	2.30
9.00	34.33	11.56	0.15	11.79	0.18	14.39	9.13	2.64
10.00	67.77	<<	<<	<<	<<	14.18	9.22	2.91
11.00	72.64	3.79	0.18	4.08	0.21	13.06	8.83	2.42
12.00	77.61	2.03	0.12	2.21	0.17	11.09	7.30	2.82
13.00	78.94	2.40	0.24	2.77	0.27	8.57	6.44	3.02
14.00	74.60	2.76	0.22	3.09	0.41	7.56	5.88	3.41
15.00	74.33	2.77	0.30	3.23	0.47	7.97	6.15	3.23
16.00	78.96	1.91	0.20	2.21	0.20	8.73	5.61	2.74
17.00	75.07	1.92	0.47	2.63	0.15	6.55	5.08	2.81
18.00	77.26	2.76	0.43	3.41	0.16	8.66	5.34	2.40
19.00	84.37	2.01	0.24	2.37	0.21	9.37	5.70	2.45
20.00	80.30	3.81	0.35	4.35	0.20	7.38	5.78	2.36
21.00	78.78	3.32	0.09	3.46	0.22	10.31	6.58	3.18
22.00	80.97	2.67	0.08	2.80	0.17	8.76	5.62	2.18
23.00	68.60	5.25	0.11	5.42	0.17	8.49	6.00	2.22
24.00	62.12	4.88	0.15	5.11	0.16	7.50	5.80	2.61

Massimo	84.37	20.26	0.54	20.58	0.47	24.94	13.15	3.41
Minimo	26.00	1.91	0.08	2.21	0.13	6.55	5.08	2.18
Media	62.23	5.11	0.26	5.52	0.22	13.43	8.24	2.73
Dev. St.	19.10	4.40	0.13	4.41	0.09	6.65	2.86	0.33

ANDAMENTO INQUINANTI AERODISPERSI ~ 21 set 2015								
	O ₃	NO ₂	NO	NO _x	CO	PM ₁₀	PM _{2,5}	SO ₂
Ora	media oraria	media oraria	media oraria	media oraria	media oraria	media oraria	media oraria	media oraria
	µg/m ³	µg/m ³	µg/m ³	µg/m ³	mg/m ³	µg/m ³	µg/m ³	µg/m ³
1.00	79.96	2.12	0.15	2.35	0.14	7.37	5.59	2.41
2.00	63.05	2.21	0.14	2.42	0.15	7.50	5.69	2.73
3.00	73.40	1.48	0.23	1.83	0.17	6.84	5.57	2.55
4.00	79.57	1.57	0.22	1.90	0.18	6.85	5.92	2.63
5.00	59.71	9.13	0.05	9.21	0.18	7.94	6.14	2.43
6.00	91.49	4.25	0.25	4.64	0.22	7.40	6.12	2.59
7.00	76.58	5.42	0.29	5.87	0.21	9.31	6.40	2.50
8.00	80.77	7.94	0.39	8.54	0.23	11.38	7.83	2.44
9.00	73.83	<<	<<	<<	<<	8.03	6.09	2.39
10.00	78.40	8.20	0.12	8.39	0.21	6.84	5.77	2.35
11.00	79.04	4.74	0.29	5.19	0.23	7.35	7.07	2.66
12.00	74.17	2.58	0.22	2.92	0.22	13.32	7.00	2.73
13.00	83.77	4.00	0.42	4.64	0.22	8.99	7.56	2.96
14.00	82.03	4.00	0.22	4.34	0.25	12.95	7.56	2.80
15.00	88.10	7.70	0.13	7.89	0.27	9.50	7.96	2.69
16.00	95.97	3.58	0.18	3.85	0.24	9.13	6.40	2.53
17.00	91.31	7.88	0.19	8.17	0.29	9.92	7.11	2.56
18.00	99.54	3.98	0.41	4.60	0.30	8.53	6.59	2.25
19.00	94.54	4.57	0.27	4.98	0.29	8.87	6.66	2.19
20.00	95.67	8.39	0.29	8.83	0.27	9.60	6.96	2.33
21.00	101.85	1.56	0.27	1.98	0.27	8.50	6.70	2.44
22.00	95.31	0.47	0.25	0.86	0.24	7.60	6.22	2.31
23.00	110.22	<<	0.31	0.26	0.23	8.07	6.47	2.34
24.00	100.94	1.21	0.17	1.48	0.24	8.37	6.56	2.27

Massimo	110.22	9.13	0.42	9.21	0.30	13.32	7.96	2.96
Minimo	59.71	0.47	0.05	0.26	0.14	6.84	5.57	2.19
Media	85.39	4.41	0.24	4.57	0.23	8.76	6.58	2.50
Dev. St.	12.57	2.71	0.09	2.80	0.04	1.75	0.69	0.19

AUTOSTRADA SALERNO-REGGIO CALABRIA *Scheda di Monitoraggio Matrice Atmosfera*

ANDAMENTO INQUINANTI AERODISPERSI									~	22 set 2015									
Ora	O ₃	NO ₂	NO	NO _x	CO	PM ₁₀	PM _{2,5}	SO ₂	media oraria	media oraria	media oraria	media oraria	media oraria	media oraria	media oraria	media oraria	media oraria	media oraria	
	media oraria	media oraria	media oraria	media oraria	media oraria	media oraria	media oraria	media oraria											
	µg/m ³	µg/m ³	µg/m ³	µg/m ³	mg/m ³	µg/m ³	µg/m ³	µg/m ³											
1.00	103.02	0.44	0.07	0.55	0.25	8.75	6.41	2.01											
2.00	102.61	1.46	0.31	1.93	0.24	8.37	6.82	2.36											
3.00	84.35	2.99	0.19	3.28	0.24	8.35	6.41	1.96											
4.00	108.29	0.32	0.17	0.58	0.25	7.15	6.42	2.06											
5.00	90.71	1.02	0.39	1.62	0.26	8.36	6.17	2.00											
6.00	68.73	13.54	0.32	14.03	0.24	9.31	6.74	1.99											
7.00	39.87	57.95	0.96	59.41	0.25	9.12	8.38	1.90											
8.00	39.87	<<	<<	<<	<<	33.41	20.66	2.06											
9.00	76.48	27.19	1.15	28.95	0.40	10.01	7.99	2.62											
10.00	87.77	31.06	0.80	32.29	0.38	9.20	6.96	2.31											
11.00	91.37	11.37	0.37	11.93	0.33	9.60	7.16	2.86											
12.00	115.69	6.32	0.29	6.78	0.26	8.43	6.45	2.81											
13.00	107.01	6.17	0.33	6.67	0.26	8.90	6.06	2.71											
14.00	107.49	4.52	0.41	5.14	0.33	8.60	6.61	2.99											
15.00	97.89	5.72	0.24	6.08	0.33	9.51	6.16	3.02											
16.00	101.17	7.54	0.13	7.74	0.26	8.83	6.07	3.20											
17.00	96.50	6.65	0.21	6.97	0.31	8.55	6.59	2.96											
18.00	100.82	3.93	0.28	4.36	0.32	8.68	6.06	3.15											
19.00	102.96	4.25	0.29	4.69	0.36	9.33	7.10	2.58											
20.00	101.22	2.36	0.15	2.59	0.31	8.76	6.55	2.52											
21.00	83.62	7.97	0.19	8.27	0.29	9.29	5.77	2.32											
22.00	82.84	7.56	0.12	7.74	0.29	8.31	5.70	2.34											
23.00	77.26	9.89	0.31	10.37	0.25	8.31	5.82	2.28											
24.00	67.15	8.25	0.41	8.87	0.25	8.27	6.42	2.28											
Massimo	115.69	57.95	1.15	59.41	0.40	33.41	20.66	3.20											
Minimo	39.87	0.32	0.07	0.55	0.24	7.15	5.70	1.90											
Media	88.94	9.93	0.35	10.47	0.29	9.81	7.14	2.47											
Dev. St.	19.79	12.92	0.27	13.26	0.05	5.06	2.95	0.41											

ANDAMENTO INQUINANTI AERODISPERSI									~	23 set 2015									
Ora	O ₃	NO ₂	NO	NO _x	CO	PM ₁₀	PM _{2,5}	SO ₂	media oraria	media oraria	media oraria	media oraria	media oraria	media oraria	media oraria	media oraria	media oraria	media oraria	
	media oraria	media oraria	media oraria	media oraria	media oraria	media oraria	media oraria	media oraria											
	µg/m ³	µg/m ³	µg/m ³	µg/m ³	mg/m ³	µg/m ³	µg/m ³	µg/m ³											
1.00	70.62	7.34	0.27	7.75	0.26	9.44	6.75	1.93											
2.00	64.75	7.61	0.30	8.07	0.25	9.31	6.66	2.34											
3.00	65.95	2.24	0.23	2.60	0.24	9.64	6.43	2.22											
4.00	69.20	1.92	0.20	2.22	0.23	9.61	6.50	2.21											
5.00	58.20	9.33	0.42	9.98	0.24	9.60	6.47	2.14											
6.00	52.33	28.09	0.48	28.83	0.26	9.24	6.97	2.04											
7.00	42.27	<<	<<	<<	<<	10.87	8.55	1.66											
8.00	34.90	72.15	1.17	73.95	0.30	12.15	8.70	1.97											
9.00	65.06	40.96	0.61	41.89	0.31	9.75	7.18	2.01											
10.00	85.52	19.82	0.62	20.77	0.31	7.94	6.12	2.21											
11.00	96.03	6.43	0.29	6.87	0.31	8.90	6.19	2.47											
12.00	92.46	6.14	0.12	6.33	0.30	6.01	5.28	2.47											
13.00	100.78	3.18	0.18	3.46	0.31	5.92	5.61	2.30											
14.00	99.23	4.74	0.47	5.47	0.26	6.91	5.54	2.64											
15.00	97.49	5.76	0.43	6.42	0.21	7.89	6.81	2.95											
16.00	94.74	17.60	0.53	18.41	0.25	9.43	6.35	2.81											
17.00	97.22	5.86	0.29	6.31	0.32	7.67	6.64	2.81											
18.00	73.50	11.77	0.20	12.07	0.35	8.85	6.95	2.37											
19.00	66.32	12.13	0.23	12.48	0.31	8.21	6.00	2.23											
20.00	73.52	7.61	0.09	7.75	0.27	7.00	6.25	2.21											
21.00	70.07	9.10	0.31	9.58	0.26	7.06	5.98	2.63											
22.00	85.90	4.05	0.12	4.24	0.25	6.79	5.99	2.47											
23.00	65.51	14.71	0.11	14.87	0.23	7.04	6.26	2.12											
24.00	95.57	7.88	0.15	8.11	0.21	8.78	6.67	2.30											
Massimo	100.78	72.15	1.17	73.95	0.35	12.15	8.70	2.95											
Minimo	34.90	1.92	0.09	2.22	0.21	5.92	5.28	1.66											
Media	75.71	13.32	0.34	13.84	0.27	8.50	6.54	2.31											
Dev. St.	18.69	15.67	0.24	15.98	0.04	1.53	0.79	0.31											

AUTOSTRADA SALERNO-REGGIO CALABRIA *Scheda di Monitoraggio Matrice Atmosfera*

Ora	ANDAMENTO INQUINANTI AERODISPERSI ~ 24 set 2015							
	O ₃	NO ₂	NO	NO _x	CO	PM ₁₀	PM _{2.5}	SO ₂
	media oraria	media oraria	media oraria	media oraria	media oraria	media oraria	media oraria	media oraria
	µg/m ³	µg/m ³	µg/m ³	µg/m ³	mg/m ³	µg/m ³	µg/m ³	µg/m ³
1.00	106.01	1.93	0.12	2.11	0.22	9.34	6.83	2.44
2.00	107.97	1.29	0.35	1.82	0.24	9.46	7.43	2.34
3.00	107.64	1.40	0.22	1.74	0.25	9.70	7.43	2.31
4.00	104.44	0.91	0.25	1.30	0.25	9.89	7.42	1.97
5.00	93.37	1.72	0.25	2.10	0.25	9.40	7.94	2.11
6.00	99.90	<<	<<	<<	<<	9.95	7.42	1.82
7.00	87.07	27.98	1.35	30.06	0.27	12.02	7.80	2.04
8.00	69.83	18.61	0.33	19.12	0.25	16.97	9.29	1.98
9.00	70.05	25.70	0.73	26.81	0.24	10.08	6.61	1.87
10.00	48.99	30.14	0.75	31.30	0.24	5.70	5.03	1.43
11.00	67.59	12.09	0.03	12.14	0.24	5.70	4.85	2.17
12.00	66.03	10.17	0.17	10.43	0.25	5.75	4.98	2.12
13.00	57.45	36.10	1.98	39.13	0.26	5.43	5.19	1.91
14.00	64.73	39.25	0.64	40.24	0.27	10.15	6.38	2.15
15.00	68.86	11.37	0.09	11.51	0.27	5.84	5.17	2.57
16.00	72.31	10.44	0.41	11.07	0.24	5.46	5.04	2.44
17.00	45.32	33.95	0.59	34.86	0.26	8.09	5.60	2.37
18.00	43.88	19.06	0.44	19.74	0.27	8.35	5.68	2.13
19.00	53.89	13.23	0.23	13.58	0.26	6.35	5.31	2.27
20.00	47.43	16.02	0.20	16.33	0.26	6.11	5.16	2.24
21.00	46.23	12.97	0.47	13.69	0.25	6.84	5.31	2.03
22.00	55.86	7.89	0.23	8.24	0.25	7.06	5.48	2.15
23.00	47.47	11.78	0.19	12.08	0.24	9.59	5.56	2.01
24.00	70.43	6.50	0.23	6.85	0.22	6.24	5.17	1.65

Massimo	107.97	39.25	1.98	40.24	0.27	16.97	9.29	2.57
Minimo	43.88	0.91	0.03	1.30	0.22	5.43	4.85	1.43
Media	70.95	15.24	0.45	15.92	0.25	8.31	6.17	2.10
Dev. St.	21.91	11.79	0.44	12.28	0.01	2.70	1.24	0.26

Ora	ANDAMENTO INQUINANTI AERODISPERSI ~ 25 set 2015							
	O ₃	NO ₂	NO	NO _x	CO	PM ₁₀	PM _{2.5}	SO ₂
	media oraria	media oraria	media oraria	media oraria	media oraria	media oraria	media oraria	media oraria
	µg/m ³	µg/m ³	µg/m ³	µg/m ³	mg/m ³	µg/m ³	µg/m ³	µg/m ³
1.00	71.57	5.41	0.14	5.62	0.20	6.76	5.54	1.60
2.00	68.53	5.09	0.26	5.50	0.19	9.01	5.43	1.84
3.00	66.18	4.97	0.11	5.14	0.17	6.63	5.38	1.30
4.00	76.77	1.89	0.13	2.09	0.18	7.50	5.46	1.53
5.00	54.96	<<	<<	<<	<<	7.45	5.84	1.47
6.00	49.46	21.25	0.22	21.58	0.18	7.25	5.80	1.48
7.00	30.14	50.69	0.79	51.91	0.20	8.29	6.13	0.90
8.00	55.90	26.21	0.57	27.09	0.25	7.19	5.73	1.54
9.00	70.32	34.38	0.50	35.15	0.27	12.60	8.56	2.07
10.00	81.23	15.39	0.18	15.67	0.30	8.06	6.55	2.27
11.00	87.59	15.83	0.37	16.40	0.31	8.01	6.49	2.01
12.00	85.59	7.28	0.37	7.85	0.32	6.57	5.38	2.31
13.00	89.22	16.16	0.15	16.39	0.30	10.05	7.58	2.02
14.00	91.88	6.47	0.25	6.86	0.29	6.41	4.88	2.11
15.00	94.70	9.96	0.39	10.56	0.27	6.39	4.96	2.06
16.00	95.26	9.65	0.42	10.30	0.29	7.11	5.17	2.16
17.00	88.60	10.27	0.24	10.65	0.29	7.62	5.44	2.01
18.00	77.77	13.72	0.21	14.05	0.29	6.53	5.21	1.97
19.00	69.47	9.55	0.19	9.84	0.28	7.07	4.98	1.79
20.00	61.71	20.38	0.28	20.80	0.28	6.53	5.28	1.71
21.00	64.89	12.64	0.11	12.81	0.28	7.00	5.01	1.87
22.00	69.11	3.51	0.21	3.84	0.22	7.51	5.59	1.67
23.00	65.08	4.02	0.20	4.32	0.20	6.65	5.42	1.84
24.00	89.54	2.47	0.11	2.64	0.19	6.38	5.17	2.18

Massimo	95.26	50.69	0.79	51.91	0.32	12.60	8.56	2.31
Minimo	30.14	1.89	0.11	2.09	0.17	6.38	4.88	0.90
Media	73.14	13.36	0.28	13.79	0.25	7.52	5.71	1.82
Dev. St.	16.08	11.48	0.17	11.69	0.05	1.40	0.86	0.34

AUTOSTRADA SALERNO-REGGIO CALABRIA *Scheda di Monitoraggio Matrice Atmosfera*

ANDAMENTO INQUINANTI AERODISPERSI ~ 26 set 2015								
Ora	O ₃	NO ₂	NO	NO _x	CO	PM ₁₀	PM _{2,5}	SO ₂
	media oraria	media oraria	media oraria	media oraria	media oraria	media oraria	media oraria	media oraria
	µg/m ³	µg/m ³	µg/m ³	µg/m ³	mg/m ³	µg/m ³	µg/m ³	µg/m ³
1.00	67.48	4.98	0.21	5.30	0.19	6.93	5.17	1.82
2.00	54.64	4.75	0.26	5.15	0.16	7.08	5.40	1.83
3.00	60.19	1.94	0.35	2.47	0.18	7.07	5.27	1.55
4.00	55.08	<<	<<	<<	<<	6.39	4.90	1.60
5.00	59.62	3.44	0.18	3.72	0.17	5.87	4.85	1.94
6.00	50.29	13.67	0.32	14.17	0.17	6.08	5.06	1.83
7.00	55.74	17.87	0.34	18.38	0.19	7.83	6.48	1.58
8.00	45.22	19.78	0.22	20.12	0.21	8.98	7.13	1.49
9.00	44.70	35.04	0.60	35.95	0.24	7.21	6.31	1.64
10.00	77.12	12.48	0.25	12.86	0.24	6.26	5.29	1.74
11.00	79.52	13.71	0.25	14.09	0.26	6.42	5.16	2.12
12.00	81.72	8.45	0.33	8.95	0.29	5.99	5.66	2.10
13.00	88.12	6.62	0.15	6.86	0.28	6.28	5.77	1.95
14.00	98.34	2.89	0.39	3.48	0.29	11.11	7.72	1.87
15.00	96.83	2.26	0.33	2.77	0.27	7.24	6.07	2.15
16.00	99.76	1.94	0.35	2.48	0.27	7.79	6.66	2.19
17.00	89.84	3.16	0.27	3.57	0.26	6.83	5.06	2.41
18.00	50.10	14.63	0.25	15.02	0.25	6.54	6.02	2.25
19.00	54.90	12.67	0.62	13.63	0.26	6.54	6.16	2.48
20.00	54.04	7.94	0.24	8.31	0.26	7.36	5.88	2.27
21.00	56.64	7.14	0.23	7.49	0.24	6.78	5.94	2.08
22.00	71.23	2.08	0.21	2.40	0.22	7.88	5.69	1.91
23.00	76.77	4.27	0.26	4.67	0.23	8.52	6.54	1.68
24.00	70.54	4.14	0.14	4.36	0.20	7.72	6.59	1.90

Massimo	99.76	35.04	0.62	35.95	0.29	11.11	7.72	2.48
Minimo	44.70	1.94	0.14	2.40	0.16	5.87	4.85	1.49
Media	68.27	8.95	0.29	9.40	0.23	7.20	5.87	1.93
Dev. St.	17.39	7.86	0.12	7.95	0.04	1.15	0.74	0.27

ANDAMENTO INQUINANTI AERODISPERSI ~ 27 set 2015								
Ora	O ₃	NO ₂	NO	NO _x	CO	PM ₁₀	PM _{2,5}	SO ₂
	media oraria	media oraria	media oraria	media oraria	media oraria	media oraria	media oraria	media oraria
	µg/m ³	µg/m ³	µg/m ³	µg/m ³	mg/m ³	µg/m ³	µg/m ³	µg/m ³
1.00	63.73	4.40	0.15	4.62	0.21	7.54	6.48	1.93
2.00	60.90	7.06	0.17	7.32	0.22	8.07	6.72	1.73
3.00	75.36	<<	<<	<<	<<	11.77	7.68	1.97
4.00	68.78	2.36	0.32	2.86	0.23	11.10	7.67	1.81
5.00	74.17	1.95	0.18	2.23	0.24	10.72	7.56	1.76
6.00	70.46	2.38	0.20	2.69	0.23	11.05	7.59	1.83
7.00	52.07	7.44	0.20	7.75	0.24	12.29	8.12	1.51
8.00	66.96	4.07	0.15	4.31	0.24	11.78	8.26	1.77
9.00	72.56	3.90	0.14	4.11	0.23	11.68	7.90	1.49
10.00	71.21	4.47	0.35	5.00	0.22	11.56	8.04	1.46
11.00	68.65	3.81	0.24	4.19	0.22	11.68	7.83	1.53
12.00	79.38	3.02	0.22	3.36	0.21	10.20	7.92	1.68
13.00	79.94	2.79	0.26	3.19	0.19	10.81	7.65	1.22
14.00	76.25	2.78	0.45	3.47	0.19	11.12	8.08	1.36
15.00	80.81	2.42	0.20	2.73	0.21	10.20	7.85	1.73
16.00	86.47	1.99	0.16	2.23	0.21	11.21	8.50	1.70
17.00	71.72	5.29	0.38	5.88	0.21	12.46	8.96	1.32
18.00	55.88	13.48	0.27	13.90	0.23	14.87	10.34	1.48
19.00	46.09	14.77	0.56	15.63	0.25	12.22	9.27	1.90
20.00	63.92	12.18	0.21	12.49	0.27	11.80	8.25	2.07
21.00	64.11	5.73	0.29	6.17	0.26	12.18	8.65	2.03
22.00	69.41	7.64	0.20	7.95	0.26	11.86	8.12	1.73
23.00	53.86	6.85	0.28	7.29	0.25	12.84	8.65	1.42
24.00	57.42	3.19	0.12	3.38	0.24	12.38	8.77	1.97

Massimo	86.47	14.77	0.56	15.63	0.27	14.87	10.34	2.07
Minimo	46.09	1.95	0.12	2.23	0.19	7.54	6.48	1.22
Media	67.92	5.39	0.25	5.77	0.23	11.39	8.12	1.68
Dev. St.	9.97	3.67	0.11	3.74	0.02	1.46	0.79	0.24

AUTOSTRADA SALERNO-REGGIO CALABRIA *Scheda di Monitoraggio Matrice Atmosfera*

ANDAMENTO INQUINANTI AERODISPERSI ~ 28 set 2015								
Ora	O ₃	NO ₂	NO	NO _x	CO	PM ₁₀	PM _{2.5}	SO ₂
	media oraria	media oraria	media oraria	media oraria	media oraria	media oraria	media oraria	media oraria
	µg/m ³	µg/m ³	µg/m ³	µg/m ³	mg/m ³	µg/m ³	µg/m ³	µg/m ³
1.00	44.96	5.67	0.28	6.10	0.23	14.66	9.41	1.69
2.00	58.88	<<	<<	<<	<<	13.84	9.81	2.34
3.00	52.49	1.85	0.19	2.14	0.21	14.47	9.85	1.97
4.00	61.09	1.81	0.14	2.02	0.19	14.26	9.58	2.26
5.00	50.32	3.41	0.20	3.71	0.19	14.37	9.35	2.29
6.00	45.61	9.58	0.29	10.02	0.20	14.80	9.48	1.97
7.00	24.32	47.42	0.77	48.61	0.22	14.33	9.82	1.92
8.00	28.72	51.93	0.93	53.35	0.26	17.47	10.51	2.45
9.00	68.25	14.19	0.18	14.47	0.31	18.56	10.60	3.06
10.00	73.11	15.87	0.47	16.59	0.31	11.50	8.52	2.79
11.00	65.92	23.08	0.47	23.80	0.31	14.68	9.61	2.76
12.00	74.37	12.10	0.53	12.90	0.30	14.00	9.48	2.87
13.00	77.15	8.81	0.16	9.05	0.33	17.43	11.96	2.89
14.00	65.60	10.78	0.20	11.08	0.34	13.68	8.78	2.46
15.00	50.95	20.71	0.42	21.36	0.30	16.59	9.86	1.96
16.00	42.16	27.34	0.32	27.83	0.31	44.50	17.71	3.44
17.00	36.74	51.51	1.18	53.32	0.32	13.80	8.90	4.60
18.00	36.24	19.85	0.49	20.60	0.34	14.33	9.41	3.74
19.00	29.69	23.91	0.62	24.86	0.31	14.40	9.62	3.79
20.00	56.96	9.35	0.38	9.93	0.29	13.05	8.20	3.71
21.00	62.96	3.26	0.18	3.53	0.28	10.76	8.13	3.56
22.00	47.77	6.95	0.38	7.54	0.25	12.53	7.96	2.57
23.00	39.89	5.52	0.32	6.01	0.24	13.43	8.10	2.56
24.00	51.76	8.89	0.17	9.15	0.23	11.05	7.96	2.78

Massimo	77.15	51.93	1.18	53.35	0.34	44.50	17.71	4.60
Minimo	24.32	1.81	0.14	2.02	0.19	10.76	7.96	1.69
Media	51.91	16.69	0.40	17.30	0.27	15.52	9.69	2.77
Dev. St.	14.95	15.17	0.27	15.53	0.05	6.45	1.95	0.73

ANDAMENTO INQUINANTI AERODISPERSI ~ 08 mag 2014								
Ora	O ₃	NO ₂	NO	NO _x	CO	PM ₁₀	PM _{2.5}	SO ₂
	media oraria	media oraria	media oraria	media oraria	media oraria	media oraria	media oraria	media oraria
	µg/m ³	µg/m ³	µg/m ³	µg/m ³	mg/m ³	µg/m ³	µg/m ³	µg/m ³
1.00	53.58	<<	<<	<<	<<	11.14	7.65	2.97
2.00	66.71	3.08	0.29	3.53	0.24	11.13	7.66	2.68
3.00	72.86	1.51	0.12	1.69	0.22	11.15	7.41	2.86
4.00	75.63	0.05	0.16	0.30	0.21	12.16	7.66	2.16
5.00	74.92	1.30	0.10	1.44	0.22	12.21	8.30	2.39
6.00	64.70	4.56	0.20	4.86	0.22	14.60	8.79	2.27
7.00	27.91	45.66	0.64	46.65	0.25	14.93	9.51	2.29
8.00	53.26	20.45	0.40	21.06	0.26	11.95	7.88	2.51
9.00	62.77	7.57	0.19	7.87	0.27	10.47	7.53	2.50
10.00	59.08	8.15	0.28	8.58	0.25	11.36	7.88	2.65
11.00	70.30	8.38	0.32	8.87	0.25	10.70	7.99	2.75
12.00	66.80	7.30	0.27	7.71	0.26	11.15	7.57	2.98
13.00	69.79	6.22	0.30	6.69	0.27	9.07	7.29	2.74
14.00	64.54	8.97	0.27	9.39	0.27	10.71	7.29	2.86
15.00	<<	<<	<<	<<	<<	<<	<<	<<
16.00	<<	<<	<<	<<	<<	<<	<<	<<
17.00	<<	<<	<<	<<	<<	<<	<<	<<
18.00	<<	<<	<<	<<	<<	<<	<<	<<
19.00	<<	<<	<<	<<	<<	<<	<<	<<
20.00	<<	<<	<<	<<	<<	<<	<<	<<
21.00	<<	<<	<<	<<	<<	<<	<<	<<
22.00	<<	<<	<<	<<	<<	<<	<<	<<
23.00	<<	<<	<<	<<	<<	<<	<<	<<
24.00	<<	<<	<<	<<	<<	<<	<<	<<

Massimo	75.63	45.66	0.64	46.65	0.27	14.93	9.51	2.98
Minimo	27.91	0.05	0.10	0.30	0.21	9.07	7.29	2.16
Media	63.06	9.48	0.27	9.90	0.25	11.62	7.89	2.61
Dev. St.	12.29	12.03	0.14	12.23	0.02	1.55	0.62	0.27

AUTOSTRADA SALERNO-REGGIO CALABRIA Scheda di Monitoraggio Matrice Atmosfera

CONCENTRAZIONI MEDIE GIORNALIERE DI Idrocarburi Policiclici Aromatici (IPA) e Metalli (Pb, Cd, As, Ni, Hg)							
data	PTS ¹	IPA ²	Piombo ²	Cadmio ²	Arsenico ²	Nichel ²	Mercurio ²
	24h µg/m ³	24h ng/m ³	24h µg/m ³	24h ng/m ³	24h ng/m ³	24h ng/m ³	24h ng/m ³
15/09/15	60.1	<LDR	0.003	<LDR	0.22	5.9	<LDR
16/09/15	80.1	<LDR	0.005	<LDR	0.22	2.7	<LDR
17/09/15	88.1	<LDR	0.005	<LDR	0.4	3.9	<LDR
18/09/15	93.8	<LDR	0.005	<LDR	1.09	4.5	<LDR
19/09/15	69.6	<LDR	0.004	<LDR	0.44	3.7	<LDR
20/09/15	42.7	<LDR	0.002	<LDR	<LDR	2.3	<LDR
21/09/15	38.9	<LDR	0.001	<LDR	<LDR	0.87	<LDR
22/09/15	37.1	<LDR	0.002	<LDR	<LDR	1.74	<LDR
23/09/15	32.3	<LDR	0.001	<LDR	<LDR	1.31	<LDR
24/09/15	34.3	<LDR	0.001	<LDR	0.22	1.42	<LDR
25/09/15	36.0	<LDR	0.001	<LDR	<LDR	1.31	<LDR
26/09/15	22.4	<LDR	0.001	0.22	<LDR	1.42	<LDR
27/09/15	26.5	<LDR	0.001	<LDR	<LDR	1.31	<LDR
28/09/15	38.2	<LDR	0.002	<LDR	0.87	1.53	<LDR

Di seguito, per ogni elemento investigato, il Limite di Rilevabilità (LDR)

	IPA	Pb	Cd	As	Ni	Hg
	ng/m ³	µg/m ³	ng/m ³	ng/m ³	ng/m ³	ng/m ³
LDR	0.1	0.001	0.2	0.2	0.2	0.20

CONCENTRAZIONI MEDIESETTIMANALI DI BTEX ³				
Settimana	BENZENE ² µg/m ³	TOLUENE µg/m ³	ETILBENZENE µg/m ³	XILENI µg/m ³
14--21 settembre 2015	0.4	3.7	0.6	2.7
21--28 settembre 2015	0.3	2.6	0.7	2.7

¹ La concentrazione di Polveri Totali Sospese (PTS) è stata regolamentata dal DPR 203/88 e DM 25/11/1994, abrogati dal DM 60/02. La soglia di attenzione era posta in 150 µg/m³.

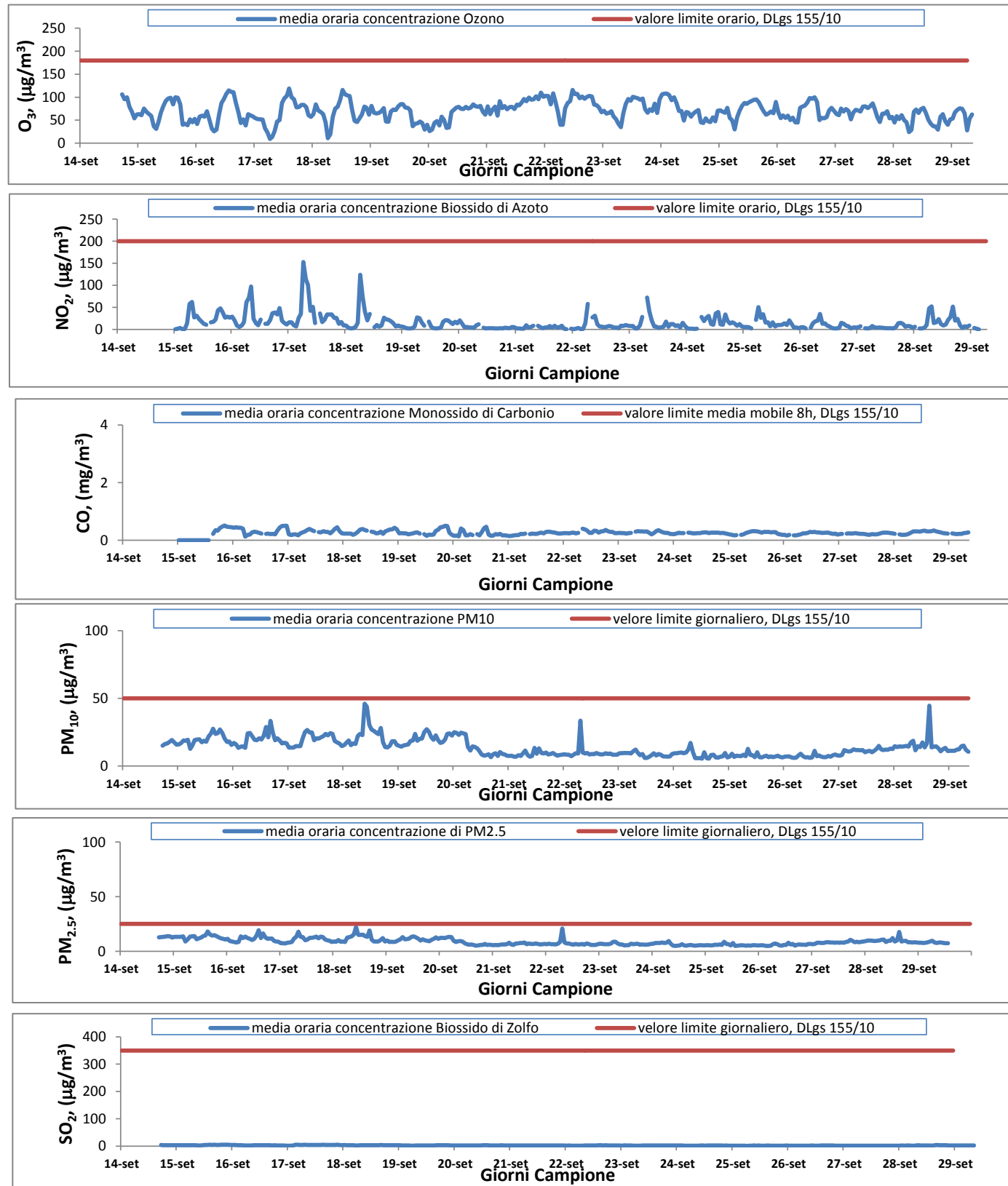
² Le concentrazioni di Benzo(a)Pirene (Idrocarburo Policiclico Aromatico(IPA)), Piombo (Pb), Nichel (Ni), Arsenico (As), Benzene (C6H6), Cadmio (Cd), Mercurio (Hg), nelle polveri aerodisperse sono attualmente normate dal DLgs 155/10.

Di seguito i valori limite

- Benzo(a)Pirene (1 ng/m³);
- Pb (0.5 µg/m³);
- Cd (5 ng/m³);
- As (6 ng/m³);
- Ni (20 ng/m³);
- Benzene (5 µg/m³).

³ BTEX (Benzene, Toluene, Etilbenzene e Xilene) determinati attraverso campionamento passivo mediante l'utilizzo di Campionatore a Diffusione (RADIELLO)

AUTOSTRADA SALERNO-REGGIO CALABRIA Scheda di Monitoraggio Matrice Atmosfera



Normativa di Riferimento¹

Inquinante	Normativa	Valore limite orario ²	Valore limite (media 8h) ³	Valore limite 24h ⁴	Valore limite annuale ⁵	Soglia di allarme
Ozono (O ₃)	DLgs 155/10	180 $\mu\text{g}/\text{m}^3$	120 $\mu\text{g}/\text{m}^3$ da non superare più di 25 volte per anno civile	—	—	240 $\mu\text{g}/\text{m}^3$
Biossido di Azoto (NO ₂)	DLgs 155/10	200 $\mu\text{g}/\text{m}^3$ da non superare più di 18 volte per anno civile	—	—	40 $\mu\text{g}/\text{m}^3$	400 $\mu\text{g}/\text{m}^3$
Monossido di Carbonio (CO)	DLgs 155/10	—	10 mg/m^3	—	—	—
Polveri Sottili con AD < 10 μm (PM ₁₀)	DLgs 155/10	—	—	50 $\mu\text{g}/\text{m}^3$ da non superare più di 35 volte per anno civile	40 $\mu\text{g}/\text{m}^3$	—
Polveri Sottili con AD < 2,5 μm (PM _{2,5})	DLgs 155/10	—	—	—	25 $\mu\text{g}/\text{m}^3$	—
Biossido di Zolfo (SO ₂)	DLgs 155/10	350 $\mu\text{g}/\text{m}^3$ da non superare più di 24 volte per anno civile	—	125 $\mu\text{g}/\text{m}^3$ da non superare più di 3 volte per anno civile	—	500 $\mu\text{g}/\text{m}^3$

¹ Normativa vigente alla data di emissione del certificato

² Valore limite per la protezione della salute umana da calcolare su un periodo di mediazione di 1 ora.

³ Valore limite da calcolare sulla media mobile trascinata di 8ore.

⁴ Valore limite giornaliero per la protezione della salute umana da calcolare su un periodo di 24 ore consecutive.

⁵ Valore limite annuale per la protezione della salute umana- anno civile

AUTOSTRADA SALERNO-REGGIO CALABRIA *Scheda di Monitoraggio Matrice Atmosfera*

ANDAMENTO VARIABILE VENTO 14-set-15		
Ora	Velocità	Direzione
	m/s	Gradi
1.00	<<	<<
2.00	<<	<<
3.00	<<	<<
4.00	<<	<<
5.00	<<	<<
6.00	<<	<<
7.00	<<	<<
8.00	<<	<<
9.00	<<	<<
10.00	<<	<<
11.00	<<	<<
12.00	<<	<<
13.00	<<	<<
14.00	<<	<<
15.00	<<	<<
16.00	<<	<<
17.00	<<	<<
18.00	0.48	244.09
19.00	0.33	245.48
20.00	0.08	CALMA
21.00	0.03	CALMA
22.00	0.00	CALMA
23.00	0.00	CALMA
24.00	0.00	CALMA

ANDAMENTO VARIABILE VENTO 15-set-15		
Ora	Velocità	Direzione
	m/s	Gradi
1.00	0.00	CALMA
2.00	0.00	CALMA
3.00	0.00	CALMA
4.00	0.00	CALMA
5.00	0.00	CALMA
6.00	0.00	CALMA
7.00	0.00	CALMA
8.00	0.00	CALMA
9.00	0.06	CALMA
10.00	0.09	CALMA
11.00	0.03	CALMA
12.00	0.02	CALMA
13.00	0.05	CALMA
14.00	0.04	CALMA
15.00	0.03	CALMA
16.00	0.02	CALMA
17.00	0.00	CALMA
18.00	0.00	CALMA
19.00	0.00	CALMA
20.00	0.00	CALMA
21.00	0.00	CALMA
22.00	0.00	CALMA
23.00	0.00	CALMA
24.00	0.04	CALMA

ANDAMENTO VARIABILE VENTO 16-set-15		
Ora	Velocità	Direzione
	m/s	Gradi
1.00	0.00	CALMA
2.00	0.00	CALMA
3.00	0.00	CALMA
4.00	0.00	CALMA
5.00	0.00	CALMA
6.00	0.00	CALMA
7.00	0.00	CALMA
8.00	0.00	CALMA
9.00	0.00	CALMA
10.00	0.00	CALMA
11.00	0.01	CALMA
12.00	0.01	CALMA
13.00	0.00	CALMA
14.00	0.01	CALMA
15.00	0.00	CALMA
16.00	0.00	CALMA
17.00	0.01	CALMA
18.00	0.01	CALMA
19.00	0.00	CALMA
20.00	0.00	CALMA
21.00	0.00	CALMA
22.00	0.00	CALMA
23.00	0.00	CALMA
24.00	0.00	CALMA

ANDAMENTO VARIABILE VENTO 17-set-15		
Ora	Velocità	Direzione
	m/s	Gradi
1.00	0.00	CALMA
2.00	0.00	CALMA
3.00	0.00	CALMA
4.00	0.00	CALMA
5.00	0.00	CALMA
6.00	0.00	CALMA
7.00	0.00	CALMA
8.00	0.00	CALMA
9.00	0.02	CALMA
10.00	0.00	CALMA
11.00	0.00	CALMA
12.00	0.00	CALMA
13.00	0.01	CALMA
14.00	0.01	CALMA
15.00	0.03	CALMA
16.00	0.01	CALMA
17.00	0.02	CALMA
18.00	0.00	CALMA
19.00	0.00	CALMA
20.00	0.00	CALMA
21.00	0.01	CALMA
22.00	0.00	CALMA
23.00	0.00	CALMA
24.00	0.00	CALMA

AUTOSTRADA SALERNO-REGGIO CALABRIA *Scheda di Monitoraggio Matrice Atmosfera*

ANDAMENTO VARIABILE VENTO 18-set-15		
Ora	Velocità	Direzione
	m/s	Gradi
1.00	0.00	CALMA
2.00	0.00	CALMA
3.00	0.00	CALMA
4.00	0.00	CALMA
5.00	0.01	CALMA
6.00	0.01	CALMA
7.00	0.06	CALMA
8.00	0.00	CALMA
9.00	0.02	CALMA
10.00	0.01	CALMA
11.00	0.01	CALMA
12.00	0.01	CALMA
13.00	0.01	CALMA
14.00	0.24	<<
15.00	0.06	CALMA
16.00	0.03	CALMA
17.00	0.00	CALMA
18.00	0.01	CALMA
19.00	0.00	CALMA
20.00	0.00	CALMA
21.00	0.01	CALMA
22.00	0.01	CALMA
23.00	0.00	CALMA
24.00	0.01	CALMA

ANDAMENTO VARIABILE VENTO 19-set-15		
Ora	Velocità	Direzione
	m/s	Gradi
1.00	0.00	CALMA
2.00	0.00	CALMA
3.00	0.00	CALMA
4.00	0.00	CALMA
5.00	0.00	CALMA
6.00	0.00	CALMA
7.00	0.00	CALMA
8.00	0.00	CALMA
9.00	0.01	CALMA
10.00	0.01	CALMA
11.00	0.01	CALMA
12.00	0.30	264.60
13.00	0.12	CALMA
14.00	0.49	66.63
15.00	0.17	<<
16.00	0.01	CALMA
17.00	0.00	CALMA
18.00	0.00	CALMA
19.00	0.00	CALMA
20.00	0.00	CALMA
21.00	0.00	CALMA
22.00	0.00	CALMA
23.00	0.00	CALMA
24.00	0.00	CALMA

ANDAMENTO VARIABILE VENTO 20-set-15		
Ora	Velocità	Direzione
	m/s	Gradi
1.00	0.00	CALMA
2.00	0.00	CALMA
3.00	0.01	CALMA
4.00	0.01	CALMA
5.00	0.00	CALMA
6.00	0.00	CALMA
7.00	0.00	CALMA
8.00	0.00	CALMA
9.00	0.04	CALMA
10.00	0.18	<<
11.00	0.11	CALMA
12.00	0.02	CALMA
13.00	0.31	272.83
14.00	0.57	265.69
15.00	1.14	266.81
16.00	0.00	CALMA
17.00	0.17	<<
18.00	0.64	250.27
19.00	1.18	248.48
20.00	0.00	CALMA
21.00	2.67	265.33
22.00	0.00	CALMA
23.00	0.03	CALMA
24.00	0.94	109.06

ANDAMENTO VARIABILE VENTO 21-set-15		
Ora	Velocità	Direzione
	m/s	Gradi
1.00	0.04	CALMA
2.00	0.00	CALMA
3.00	0.03	CALMA
4.00	0.00	CALMA
5.00	0.00	CALMA
6.00	0.87	248.55
7.00	2.31	268.22
8.00	0.46	73.97
9.00	2.24	268.83
10.00	3.35	267.76
11.00	1.35	270.16
12.00	0.92	336.62
13.00	0.58	247.46
14.00	1.04	269.17
15.00	2.09	268.07
16.00	0.62	269.01
17.00	0.35	267.67
18.00	0.03	CALMA
19.00	0.01	CALMA
20.00	0.22	<<
21.00	0.36	267.72
22.00	0.39	251.51
23.00	0.33	252.28
24.00	0.48	264.78

AUTOSTRADA SALERNO-REGGIO CALABRIA *Scheda di Monitoraggio Matrice Atmosfera*

ANDAMENTO VARIABILE VENTO 22-set-15		
Ora	Velocità	Direzione
	m/s	Gradi
1.00	0.20	<<
2.00	0.44	264.40
3.00	0.48	248.76
4.00	1.01	268.16
5.00	0.00	CALMA
6.00	0.00	CALMA
7.00	0.03	CALMA
8.00	0.00	CALMA
9.00	0.14	CALMA
10.00	0.36	267.96
11.00	0.57	270.01
12.00	0.18	<<
13.00	0.00	CALMA
14.00	0.50	294.50
15.00	1.45	268.10
16.00	0.39	287.24
17.00	0.27	271.78
18.00	0.31	267.73
19.00	0.21	<<
20.00	0.40	265.25
21.00	0.06	CALMA
22.00	0.00	CALMA
23.00	0.00	CALMA
24.00	0.00	CALMA

ANDAMENTO VARIABILE VENTO 23-set-15		
Ora	Velocità	Direzione
	m/s	Gradi
1.00	0.00	CALMA
2.00	0.00	CALMA
3.00	0.00	CALMA
4.00	0.00	CALMA
5.00	0.00	CALMA
6.00	0.00	CALMA
7.00	0.00	CALMA
8.00	0.00	CALMA
9.00	0.00	CALMA
10.00	0.02	CALMA
11.00	0.02	CALMA
12.00	0.02	CALMA
13.00	0.07	CALMA
14.00	0.19	<<
15.00	0.29	66.59
16.00	0.06	CALMA
17.00	0.01	CALMA
18.00	0.00	CALMA
19.00	0.00	CALMA
20.00	0.00	CALMA
21.00	0.00	CALMA
22.00	0.00	CALMA
23.00	0.00	CALMA
24.00	0.03	CALMA

ANDAMENTO VARIABILE VENTO 24-set-15		
Ora	Velocità	Direzione
	m/s	Gradi
1.00	0.22	<<
2.00	0.76	246.11
3.00	2.08	245.48
4.00	2.24	244.53
5.00	0.68	242.83
6.00	0.41	230.93
7.00	0.01	CALMA
8.00	0.90	222.46
9.00	0.00	CALMA
10.00	0.01	CALMA
11.00	0.00	CALMA
12.00	0.32	225.72
13.00	0.00	CALMA
14.00	0.01	CALMA
15.00	0.03	CALMA
16.00	0.01	CALMA
17.00	0.01	CALMA
18.00	0.00	CALMA
19.00	0.00	CALMA
20.00	0.00	CALMA
21.00	0.00	CALMA
22.00	0.00	CALMA
23.00	0.00	CALMA
24.00	0.02	CALMA

ANDAMENTO VARIABILE VENTO 25-set-15		
Ora	Velocità	Direzione
	m/s	Gradi
1.00	0.00	CALMA
2.00	0.02	CALMA
3.00	0.00	CALMA
4.00	0.00	CALMA
5.00	0.00	CALMA
6.00	0.00	CALMA
7.00	0.00	CALMA
8.00	0.00	CALMA
9.00	0.02	CALMA
10.00	0.10	CALMA
11.00	0.61	250.57
12.00	0.32	249.38
13.00	0.59	250.67
14.00	0.65	265.63
15.00	0.45	263.16
16.00	0.26	264.55
17.00	0.16	<<
18.00	0.01	CALMA
19.00	0.25	<<
20.00	0.00	CALMA
21.00	0.08	CALMA
22.00	0.03	CALMA
23.00	0.02	CALMA
24.00	0.03	CALMA

AUTOSTRADA SALERNO-REGGIO CALABRIA Scheda di Monitoraggio Matrice Atmosfera

ANDAMENTO VARIABILE VENTO 26-set-15		
Ora	Velocità	Direzione
	m/s	Gradi
1.00	0.00	CALMA
2.00	0.00	CALMA
3.00	0.01	CALMA
4.00	0.00	CALMA
5.00	0.00	CALMA
6.00	0.00	CALMA
7.00	0.00	CALMA
8.00	0.03	CALMA
9.00	0.05	CALMA
10.00	0.05	CALMA
11.00	0.16	<<
12.00	0.50	243.07
13.00	0.00	CALMA
14.00	0.00	CALMA
15.00	0.00	CALMA
16.00	0.00	CALMA
17.00	0.00	CALMA
18.00	0.00	CALMA
19.00	0.00	CALMA
20.00	0.01	CALMA
21.00	0.00	CALMA
22.00	0.00	CALMA
23.00	0.04	CALMA
24.00	0.00	CALMA

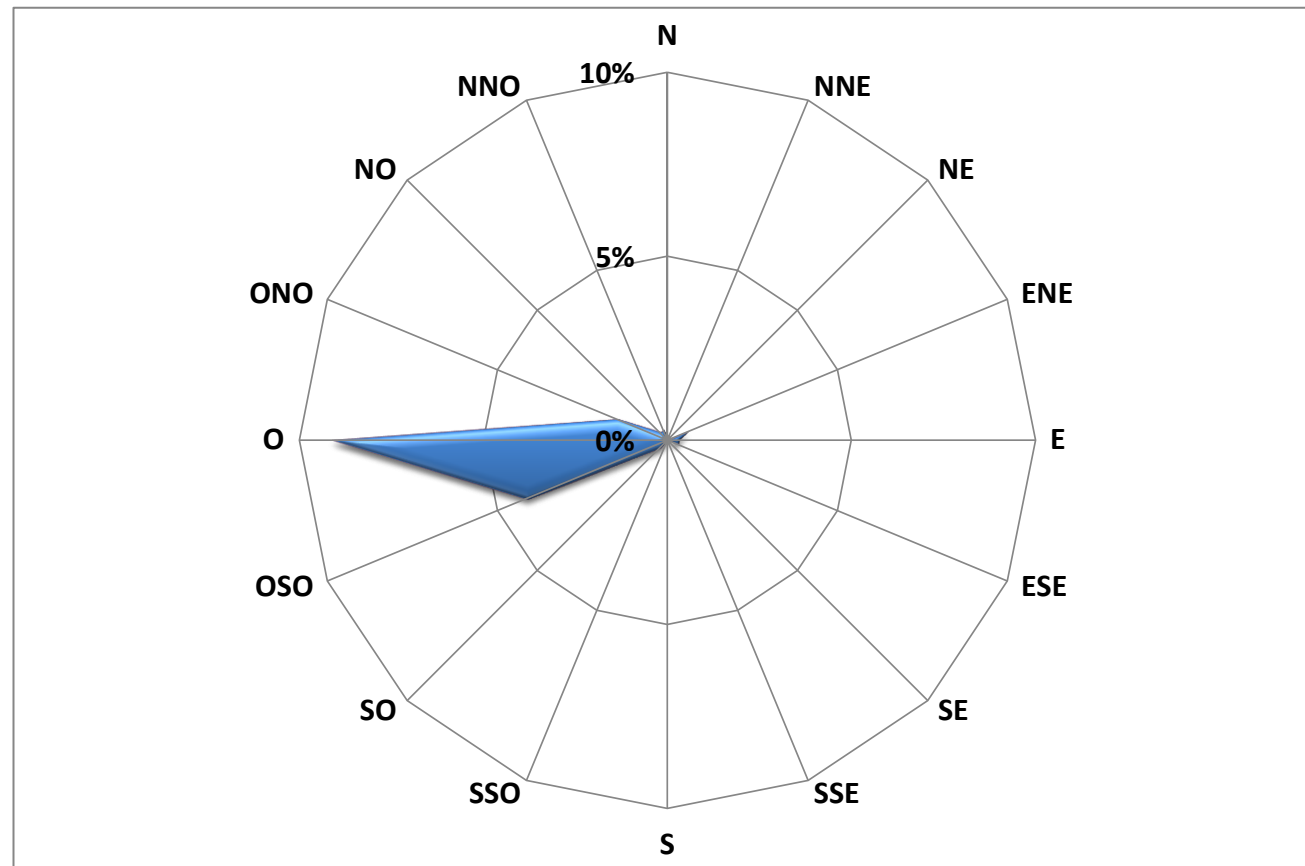
ANDAMENTO VARIABILE VENTO 27-set-15		
Ora	Velocità	Direzione
	m/s	Gradi
1.00	0.00	CALMA
2.00	0.00	CALMA
3.00	0.00	CALMA
4.00	0.00	CALMA
5.00	0.02	CALMA
6.00	0.00	CALMA
7.00	0.00	CALMA
8.00	0.01	CALMA
9.00	0.00	CALMA
10.00	0.01	CALMA
11.00	0.00	CALMA
12.00	0.01	CALMA
13.00	0.16	<<
14.00	0.03	CALMA
15.00	0.02	CALMA
16.00	0.00	CALMA
17.00	0.00	CALMA
18.00	0.00	CALMA
19.00	0.01	CALMA
20.00	0.00	CALMA
21.00	0.00	CALMA
22.00	0.00	CALMA
23.00	0.00	CALMA
24.00	0.01	CALMA

ANDAMENTO VARIABILE VENTO 28-set-15		
Ora	Velocità	Direzione
	m/s	Gradi
1.00	0.00	CALMA
2.00	0.01	CALMA
3.00	0.00	CALMA
4.00	0.01	CALMA
5.00	0.00	CALMA
6.00	0.00	CALMA
7.00	0.00	CALMA
8.00	0.00	CALMA
9.00	0.00	CALMA
10.00	0.00	CALMA
11.00	0.02	CALMA
12.00	0.07	CALMA
13.00	0.16	<<
14.00	0.08	CALMA
15.00	0.00	CALMA
16.00	0.00	CALMA
17.00	0.00	CALMA
18.00	0.00	CALMA
19.00	0.00	CALMA
20.00	0.03	CALMA
21.00	0.00	CALMA
22.00	0.00	CALMA
23.00	0.00	CALMA
24.00	0.00	CALMA

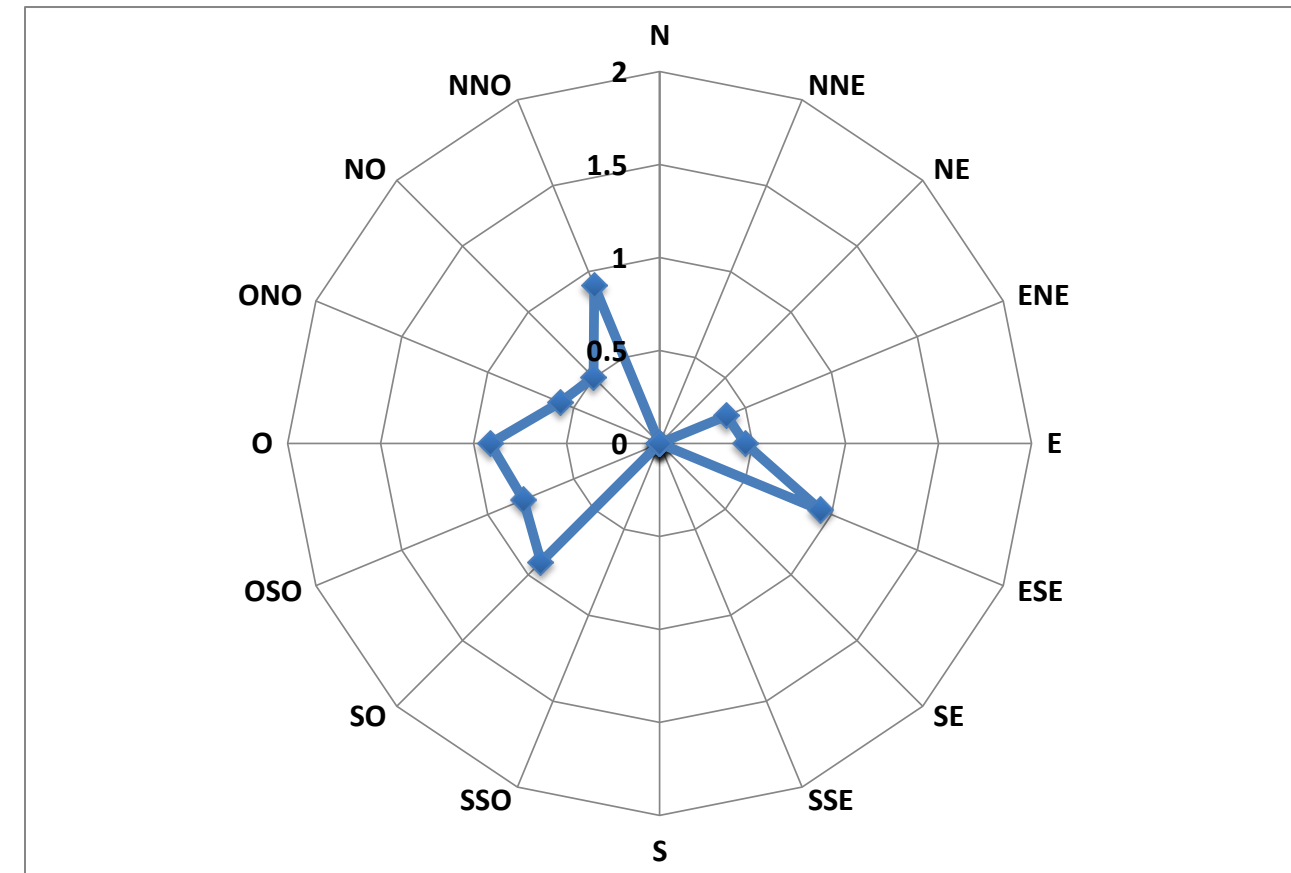
ANDAMENTO VARIABILE VENTO 29-set-15		
Ora	Velocità	Direzione
	m/s	Gradi
1.00	0.01	CALMA
2.00	0.00	CALMA
3.00	0.24	<<
4.00	0.00	CALMA
5.00	0.27	232.0
6.00	0.01	CALMA
7.00	0.00	CALMA
8.00	0.04	CALMA
9.00	0.50	240.7
10.00	0.17	<<
11.00	0.01	CALMA
12.00	1.18	240.8
13.00	0.77	242.6
14.00	0.00	CALMA
15.00	<<	<<
16.00	<<	<<
17.00	<<	<<
18.00	<<	<<
19.00	<<	<<
20.00	<<	<<
21.00	<<	<<
22.00	<<	<<
23.00	<<	<<
24.00	<<	<<

AUTOSTRADA SALERNO-REGGIO CALABRIA Scheda di Monitoraggio Matrice Atmosfera

Direzione percentuale dei venti relativa all'intero periodo di riferimento (%)



Velocità media relativa all'intero periodo di riferimento (m/s)



AUTOSTRADA SALERNO-REGGIO CALABRIA
Scheda di Monitoraggio Matrice Atmosfera

ANDAMENTO PARAMETRI METEOROLOGICI					
14 set 2015					
Ora	Temperatura	Pressione	Umidità Relativa	Radiazione Solare	Pioggia
	°C	mbar	%	W/m ²	mm
1.00	<<	<<	<<	<<	<<
2.00	<<	<<	<<	<<	<<
3.00	<<	<<	<<	<<	<<
4.00	<<	<<	<<	<<	<<
5.00	<<	<<	<<	<<	<<
6.00	<<	<<	<<	<<	<<
7.00	<<	<<	<<	<<	<<
8.00	<<	<<	<<	<<	<<
9.00	<<	<<	<<	<<	<<
10.00	<<	<<	<<	<<	<<
11.00	<<	<<	<<	<<	<<
12.00	<<	<<	<<	<<	<<
13.00	<<	<<	<<	<<	<<
14.00	<<	<<	<<	<<	<<
15.00	<<	<<	<<	<<	<<
16.00	<<	<<	<<	<<	<<
17.00	<<	<<	<<	<<	<<
18.00	27.65	1000.35	63.39	36.34	0.00
19.00	26.83	1000.66	67.68	0.49	0.00
20.00	27.48	1001.32	60.99	0.00	0.00
21.00	26.51	1001.80	64.26	0.00	0.00
22.00	25.23	1002.04	68.40	0.00	0.00
23.00	24.68	1002.05	69.42	0.00	0.00
24.00	24.39	1002.26	68.86	0.00	0.00

ANDAMENTO PARAMETRI METEOROLOGICI					
15 set 2015					
Ora	Temperatura	Pressione	Umidità Relativa	Radiazione Solare	Pioggia
	°C	mbar	%	W/m ²	mm
1.00	24.47	1002.18	67.62	0.00	0.00
2.00	24.60	1001.98	68.74	0.00	0.00
3.00	24.57	1001.84	69.95	0.00	0.00
4.00	24.26	1001.81	69.35	0.00	0.00
5.00	24.29	1001.42	67.31	0.00	0.00
6.00	24.23	1001.43	62.53	2.16	0.00
7.00	24.38	1001.89	65.42	68.96	0.00
8.00	26.21	1001.99	62.21	249.05	0.00
9.00	27.87	1001.97	60.97	424.55	0.00
10.00	27.82	1002.41	60.08	586.91	0.00
11.00	28.60	1002.54	54.21	689.43	0.00
12.00	28.74	1002.36	56.56	258.44	0.00
13.00	29.38	1002.23	54.28	95.84	0.00
14.00	29.11	1002.22	60.59	113.38	0.00
15.00	29.15	1001.62	63.06	189.36	0.00
16.00	28.29	1001.25	63.25	229.84	0.00
17.00	28.53	1000.97	58.58	131.36	0.00
18.00	27.98	1000.67	61.92	36.19	0.00
19.00	26.58	1000.58	64.66	0.66	0.00
20.00	26.17	1000.83	64.89	0.00	0.00
21.00	25.57	1001.05	65.35	0.00	0.00
22.00	25.17	1001.02	66.80	0.00	0.00
23.00	24.81	1000.93	65.57	0.00	0.00
24.00	25.22	1000.73	62.46	0.00	0.00

AUTOSTRADA SALERNO-REGGIO CALABRIA *Scheda di Monitoraggio Matrice Atmosfera*

ANDAMENTO PARAMETRI METEOROLOGICI					
16 set 2015					
Ora	Temperatura	Pressione	Umidità Relativa	Radiazione Solare	Pioggia
	°C	mbar	%	W/m ²	mm
1.00	25.10	1000.49	62.84	0.00	0.00
2.00	25.07	1000.32	60.07	0.00	0.00
3.00	24.90	1000.22	59.78	0.00	0.00
4.00	25.06	999.98	56.70	0.00	0.00
5.00	24.90	1000.07	56.41	0.00	0.00
6.00	24.53	1000.09	60.04	2.54	0.00
7.00	24.95	1000.43	61.88	69.50	0.00
8.00	26.94	1000.58	59.08	233.91	0.00
9.00	29.72	1000.90	53.55	417.83	0.00
10.00	30.60	1000.90	47.79	592.75	0.00
11.00	31.68	1001.06	44.93	680.15	0.00
12.00	31.25	1000.97	45.78	232.54	0.00
13.00	31.24	1000.80	46.94	94.51	0.00
14.00	31.28	1000.68	46.53	106.54	0.00
15.00	31.78	1000.28	46.31	198.07	0.00
16.00	32.08	1000.02	44.80	239.05	0.00
17.00	31.30	999.93	48.08	127.42	0.00
18.00	30.51	999.83	52.16	34.15	0.00
19.00	28.63	1000.11	57.18	0.52	0.00
20.00	27.68	1000.77	60.24	0.00	0.00
21.00	26.55	1000.97	60.52	0.00	0.00
22.00	26.49	1000.92	60.39	0.00	0.00
23.00	26.30	1000.93	61.59	0.00	0.00
24.00	26.37	1000.40	57.73	0.00	0.00

ANDAMENTO PARAMETRI METEOROLOGICI					
17 set 2015					
Ora	Temperatura	Pressione	Umidità Relativa	Radiazione Solare	Pioggia
	°C	mbar	%	W/m ²	mm
1.00	26.32	999.90	52.72	0.00	0.00
2.00	26.17	999.64	51.94	0.00	0.00
3.00	26.21	999.25	51.11	0.00	0.00
4.00	25.67	999.16	54.43	0.00	0.00
5.00	25.08	999.38	57.28	0.00	0.00
6.00	24.65	999.54	58.05	2.03	0.00
7.00	25.99	999.78	54.86	64.16	0.00
8.00	28.69	1000.14	51.93	233.10	0.00
9.00	30.66	1000.58	47.81	410.67	0.00
10.00	31.30	1000.78	44.47	588.37	0.00
11.00	32.48	1000.99	42.52	681.81	0.00
12.00	32.01	1000.79	41.36	218.59	0.00
13.00	32.57	1000.66	41.39	93.68	0.00
14.00	33.10	1000.13	43.20	101.41	0.00
15.00	33.69	999.64	44.17	223.37	0.00
16.00	32.93	999.52	47.31	236.40	0.00
17.00	31.67	999.52	50.56	115.78	0.00
18.00	29.58	999.85	55.01	32.89	0.00
19.00	27.63	999.96	57.73	0.33	0.00
20.00	26.94	1000.40	54.46	0.00	0.00
21.00	26.89	1000.71	53.83	0.00	0.00
22.00	26.65	1000.72	54.54	0.00	0.00
23.00	26.42	1000.67	51.42	0.00	0.00
24.00	26.42	1000.53	46.93	0.00	0.00

AUTOSTRADA SALERNO-REGGIO CALABRIA *Scheda di Monitoraggio Matrice Atmosfera*

ANDAMENTO PARAMETRI METEOROLOGICI					
18 set 2015					
Ora	Temperatura	Pressione	Umidità Relativa	Radiazione Solare	Pioggia
	°C	mbar	%	W/m ²	mm
1.00	26.15	1000.63	47.76	0.00	0.00
2.00	25.78	1000.50	52.84	0.00	0.00
3.00	25.55	1000.47	52.11	0.00	0.00
4.00	25.42	1000.40	50.90	0.00	0.00
5.00	25.38	1000.40	50.31	0.00	0.00
6.00	25.31	1000.60	49.06	1.70	0.00
7.00	25.45	1001.01	55.55	61.50	0.00
8.00	27.20	1001.46	52.81	233.52	0.00
9.00	28.79	1002.11	50.11	415.76	0.00
10.00	30.20	1002.47	46.72	589.90	0.00
11.00	31.24	1002.73	41.11	682.26	0.00
12.00	31.21	1002.98	40.25	180.34	0.00
13.00	30.86	1002.83	40.64	86.68	0.00
14.00	29.86	1002.60	50.38	90.20	0.00
15.00	29.04	1002.57	62.23	229.35	0.00
16.00	28.37	1002.38	65.64	242.47	0.00
17.00	28.40	1002.17	57.85	105.80	0.00
18.00	27.56	1002.11	49.54	30.63	0.00
19.00	26.10	1002.42	48.46	0.19	0.00
20.00	25.33	1003.00	49.75	0.00	0.00
21.00	24.78	1003.45	53.03	0.00	0.00
22.00	24.23	1003.50	61.17	0.00	0.00
23.00	23.97	1003.52	64.54	0.00	0.00
24.00	23.91	1003.41	57.99	0.00	0.00

ANDAMENTO PARAMETRI METEOROLOGICI					
19 set 2015					
Ora	Temperatura	Pressione	Umidità Relativa	Radiazione Solare	Pioggia
	°C	mbar	%	W/m ²	mm
1.00	23.78	1003.20	60.03	0.00	0.00
2.00	23.60	1002.79	60.68	0.00	0.00
3.00	23.36	1002.36	58.80	0.00	0.00
4.00	23.52	1002.32	55.93	0.00	0.00
5.00	23.35	1002.45	60.72	0.00	0.00
6.00	23.19	1002.71	66.11	1.67	0.00
7.00	23.74	1002.91	57.56	60.28	0.00
8.00	25.18	1003.03	60.13	237.25	0.00
9.00	26.88	1003.20	60.29	425.10	0.00
10.00	27.86	1003.28	57.50	595.08	0.00
11.00	28.06	1003.26	62.08	687.13	0.00
12.00	27.25	1003.62	68.55	129.15	0.00
13.00	27.05	1004.36	73.69	97.82	0.00
14.00	27.12	1003.83	73.92	112.53	0.00
15.00	27.63	1002.74	67.08	201.90	0.00
16.00	27.99	1002.08	63.47	262.86	0.00
17.00	27.17	1001.60	66.80	91.35	0.00
18.00	26.41	1001.16	58.87	29.95	0.00
19.00	25.31	1000.86	55.91	0.00	0.00
20.00	24.96	1000.91	56.07	0.00	0.00
21.00	24.18	1001.00	70.68	0.00	0.00
22.00	24.16	1001.35	79.47	0.00	0.00
23.00	23.79	1000.99	80.73	0.00	0.00
24.00	23.52	1001.16	81.07	0.00	0.00

AUTOSTRADA SALERNO-REGGIO CALABRIA *Scheda di Monitoraggio Matrice Atmosfera*

ANDAMENTO PARAMETRI METEOROLOGICI					
20 set 2015					
Ora	Temperatura	Pressione	Umidità Relativa	Radiazione Solare	Pioggia
	°C	mbar	%	W/m ²	mm
1.00	23.90	1001.19	85.45	0.00	0.00
2.00	23.54	1000.95	84.59	0.00	0.00
3.00	24.12	1001.42	82.99	0.00	0.00
4.00	24.84	1000.60	83.57	0.00	0.00
5.00	24.38	1000.05	81.95	0.00	0.00
6.00	24.17	999.86	82.03	0.15	0.00
7.00	23.05	998.91	82.44	35.22	0.00
8.00	22.81	999.39	83.36	29.80	0.00
9.00	24.75	999.16	79.61	191.01	0.00
10.00	25.77	999.01	73.07	438.28	0.00
11.00	26.71	999.02	68.06	691.32	0.00
12.00	26.50	998.78	69.79	210.61	0.00
13.00	25.90	997.62	73.87	144.22	0.00
14.00	24.59	996.98	78.20	21.43	0.00
15.00	24.07	996.49	78.19	31.63	0.00
16.00	22.81	996.60	80.70	26.97	0.00
17.00	23.17	996.25	77.39	34.68	0.00
18.00	22.75	995.77	78.95	27.55	0.00
19.00	22.13	995.60	81.67	0.00	0.00
20.00	21.75	996.54	80.25	0.00	0.00
21.00	19.96	996.90	82.26	0.00	0.00
22.00	18.63	997.12	85.37	0.00	0.00
23.00	19.37	996.31	86.45	0.00	0.00
24.00	19.14	995.78	85.85	0.00	0.00

ANDAMENTO PARAMETRI METEOROLOGICI					
21 set 2015					
Ora	Temperatura	Pressione	Umidità Relativa	Radiazione Solare	Pioggia
	°C	mbar	%	W/m ²	mm
1.00	18.38	995.72	81.72	0.00	0.00
2.00	19.04	995.28	82.31	0.00	0.00
3.00	19.03	994.44	81.94	0.00	0.00
4.00	19.60	994.08	80.35	0.00	0.00
5.00	19.44	993.92	82.48	0.00	0.00
6.00	21.30	993.61	72.26	0.00	0.00
7.00	22.02	993.78	75.90	10.58	0.00
8.00	21.95	994.26	77.26	55.89	0.00
9.00	22.46	994.92	74.19	47.64	0.00
10.00	22.62	995.34	73.44	129.90	0.00
11.00	22.82	995.37	70.37	90.63	0.00
12.00	22.97	995.29	69.57	83.26	0.00
13.00	23.10	995.18	69.57	97.54	0.00
14.00	23.49	995.30	67.99	139.12	0.00
15.00	23.42	995.45	67.52	90.64	0.00
16.00	23.38	995.74	67.65	36.81	0.00
17.00	23.33	995.94	68.36	31.72	0.00
18.00	23.25	996.18	64.97	11.07	0.00
19.00	22.94	996.32	64.79	0.00	0.00
20.00	22.49	996.52	66.94	0.00	0.00
21.00	22.93	996.72	67.49	0.00	0.00
22.00	23.00	996.70	68.54	0.00	0.00
23.00	22.97	996.71	70.53	0.00	0.00
24.00	22.92	996.53	68.88	0.00	0.00

AUTOSTRADA SALERNO-REGGIO CALABRIA *Scheda di Monitoraggio Matrice Atmosfera*

ANDAMENTO PARAMETRI METEOROLOGICI					
22 set 2015					
	Temperatura	Pressione	Umidità Relativa	Radiazione Solare	Pioggia
Ora	°C	mbar	%	W/m ²	mm
1.00	22.98	996.43	69.08	0.00	0.00
2.00	22.71	996.12	70.61	0.00	0.00
3.00	22.63	995.92	72.01	0.00	0.00
4.00	22.71	995.86	69.17	0.00	0.00
5.00	22.11	995.84	72.73	0.00	0.00
6.00	21.55	995.95	73.84	0.42	0.00
7.00	21.18	996.20	76.28	16.85	0.00
8.00	21.84	996.35	75.24	108.23	0.00
9.00	23.76	996.50	67.25	367.73	0.00
10.00	24.44	996.70	64.13	484.09	0.00
11.00	24.51	996.87	62.32	283.42	0.00
12.00	24.29	996.86	59.40	107.61	0.00
13.00	25.22	996.55	56.34	120.28	0.00
14.00	25.23	996.19	58.61	104.35	0.00
15.00	24.50	996.18	61.74	217.76	0.00
16.00	24.56	996.25	64.09	139.51	0.00
17.00	24.12	996.33	65.39	92.81	0.00
18.00	23.79	996.29	63.27	31.97	0.00
19.00	23.42	996.40	63.90	0.00	0.00
20.00	23.38	996.94	63.24	0.00	0.00
21.00	22.82	997.19	63.18	0.00	0.00
22.00	22.32	997.17	65.36	0.00	0.00
23.00	22.03	997.13	65.78	0.00	0.00
24.00	21.46	997.01	71.36	0.00	0.00

ANDAMENTO PARAMETRI METEOROLOGICI					
23 set 2015					
	Temperatura	Pressione	Umidità Relativa	Radiazione Solare	Pioggia
Ora	°C	mbar	%	W/m ²	mm
1.00	21.30	996.89	73.55	0.00	0.00
2.00	20.57	996.53	75.95	0.00	0.00
3.00	20.33	996.17	77.60	0.00	0.00
4.00	20.94	996.00	76.56	0.00	0.00
5.00	21.09	996.10	76.82	0.00	0.00
6.00	21.34	996.25	75.36	0.00	0.00
7.00	21.54	996.47	74.10	26.52	0.00
8.00	21.56	996.95	74.91	42.72	0.00
9.00	22.52	997.54	69.11	296.32	0.00
10.00	23.75	997.93	64.51	372.85	0.00
11.00	24.20	997.97	62.66	456.01	0.00
12.00	24.33	997.93	60.41	85.47	0.00
13.00	24.59	997.72	57.66	77.48	0.00
14.00	24.50	997.40	58.21	113.41	0.00
15.00	24.83	996.93	57.12	273.51	0.00
16.00	24.25	996.80	58.36	281.15	0.00
17.00	23.99	996.65	59.27	43.75	0.00
18.00	22.21	996.61	66.80	13.36	0.00
19.00	20.50	996.76	66.83	0.00	0.00
20.00	19.98	997.11	65.88	0.00	0.00
21.00	19.83	997.20	63.22	0.00	0.00
22.00	19.92	997.15	60.01	0.00	0.00
23.00	19.88	997.09	62.43	0.00	0.00
24.00	21.40	996.79	61.76	0.00	0.00

AUTOSTRADA SALERNO-REGGIO CALABRIA *Scheda di Monitoraggio Matrice Atmosfera***ANDAMENTO PARAMETRI METEOROLOGICI****24 set 2015**

Ora	Temperatura	Pressione	Umidità Relativa	Radiazione Solare	Pioggia
	°C	mbar	%	W/m ²	mm
1.00	22.28	996.17	62.73	0.00	0.00
2.00	22.74	995.40	62.52	0.00	0.00
3.00	22.77	995.16	63.12	0.00	0.00
4.00	22.73	995.10	64.15	0.00	0.00
5.00	22.25	994.96	68.66	0.00	0.00
6.00	22.70	995.05	56.17	0.42	0.00
7.00	23.08	995.95	61.97	57.67	0.00
8.00	21.43	997.07	77.74	82.06	0.00
9.00	19.63	997.98	85.18	32.59	0.00
10.00	19.75	997.98	85.66	123.07	0.00
11.00	21.23	998.17	80.30	242.24	0.00
12.00	21.04	998.19	79.59	121.65	0.00
13.00	21.63	998.03	75.80	176.85	0.00
14.00	21.82	997.82	71.36	126.88	0.00
15.00	22.14	997.75	69.07	189.72	0.00
16.00	22.38	997.63	67.82	114.91	0.00
17.00	21.81	997.57	72.41	31.03	0.00
18.00	21.22	997.90	74.09	5.43	0.00
19.00	21.07	998.04	73.50	0.00	0.00
20.00	20.45	998.45	74.24	0.00	0.00
21.00	20.16	998.72	74.29	0.00	0.00
22.00	20.02	998.75	74.06	0.00	0.00
23.00	19.75	998.82	72.90	0.00	0.00
24.00	19.90	998.64	69.60	0.00	0.00

ANDAMENTO PARAMETRI METEOROLOGICI**25 set 2015**

Ora	Temperatura	Pressione	Umidità Relativa	Radiazione Solare	Pioggia
	°C	mbar	%	W/m ²	mm
1.00	19.82	998.45	68.25	0.00	0.00
2.00	19.07	998.30	70.56	0.00	0.00
3.00	18.80	997.91	71.18	0.00	0.00
4.00	19.19	997.73	71.23	0.00	0.00
5.00	19.28	997.73	71.56	0.00	0.00
6.00	18.42	997.87	74.41	0.63	0.00
7.00	18.72	998.11	74.11	38.78	0.00
8.00	20.20	998.29	69.89	69.62	0.00
9.00	21.51	998.65	66.17	249.95	0.00
10.00	22.61	998.97	61.54	352.87	0.00
11.00	22.65	998.99	62.88	326.53	0.00
12.00	21.95	999.08	71.16	171.53	0.00
13.00	22.77	998.94	62.91	94.70	0.00
14.00	23.31	998.85	59.70	92.51	0.00
15.00	23.57	998.77	58.94	279.69	0.00
16.00	23.21	998.65	61.13	132.08	0.00
17.00	22.62	998.66	61.77	58.28	0.00
18.00	21.84	998.68	67.88	14.24	0.00
19.00	21.43	998.98	72.96	0.00	0.00
20.00	20.68	999.36	74.82	0.00	0.00
21.00	20.48	999.59	77.07	0.00	0.00
22.00	19.61	999.74	83.09	0.00	0.00
23.00	19.61	999.71	81.62	0.00	0.00
24.00	19.70	999.57	78.70	0.00	0.00

AUTOSTRADA SALERNO-REGGIO CALABRIA *Scheda di Monitoraggio Matrice Atmosfera*

ANDAMENTO PARAMETRI METEOROLOGICI					
26 set 2015					
Ora	Temperatura	Pressione	Umidità Relativa	Radiazione Solare	Pioggia
	°C	mbar	%	W/m ²	mm
1.00	19.43	999.45	78.93	0.00	0.00
2.00	18.57	999.28	80.94	0.00	0.00
3.00	18.28	998.92	80.43	0.00	0.00
4.00	18.54	998.76	80.01	0.00	0.00
5.00	18.96	998.59	80.13	0.00	0.00
6.00	19.31	998.42	80.19	0.00	0.00
7.00	19.06	999.05	83.13	8.21	0.00
8.00	18.44	999.29	86.34	55.93	0.00
9.00	19.65	999.35	85.41	170.63	0.00
10.00	20.99	999.43	75.94	336.62	0.00
11.00	21.50	999.67	75.45	322.87	0.00
12.00	22.63	999.40	68.87	278.28	0.00
13.00	22.76	999.35	66.74	102.70	0.00
14.00	23.40	999.26	62.08	166.62	0.00
15.00	23.27	999.29	64.65	264.10	0.00
16.00	23.20	999.31	62.04	171.45	0.00
17.00	22.87	999.45	63.09	73.05	0.00
18.00	21.30	999.55	72.46	10.35	0.00
19.00	20.28	999.92	78.40	0.00	0.00
20.00	20.04	1000.47	77.70	0.00	0.00
21.00	20.02	1000.87	75.61	0.00	0.00
22.00	20.73	1000.94	70.59	0.00	0.00
23.00	20.95	1000.80	69.01	0.00	0.00
24.00	20.76	1000.77	67.44	0.00	0.00

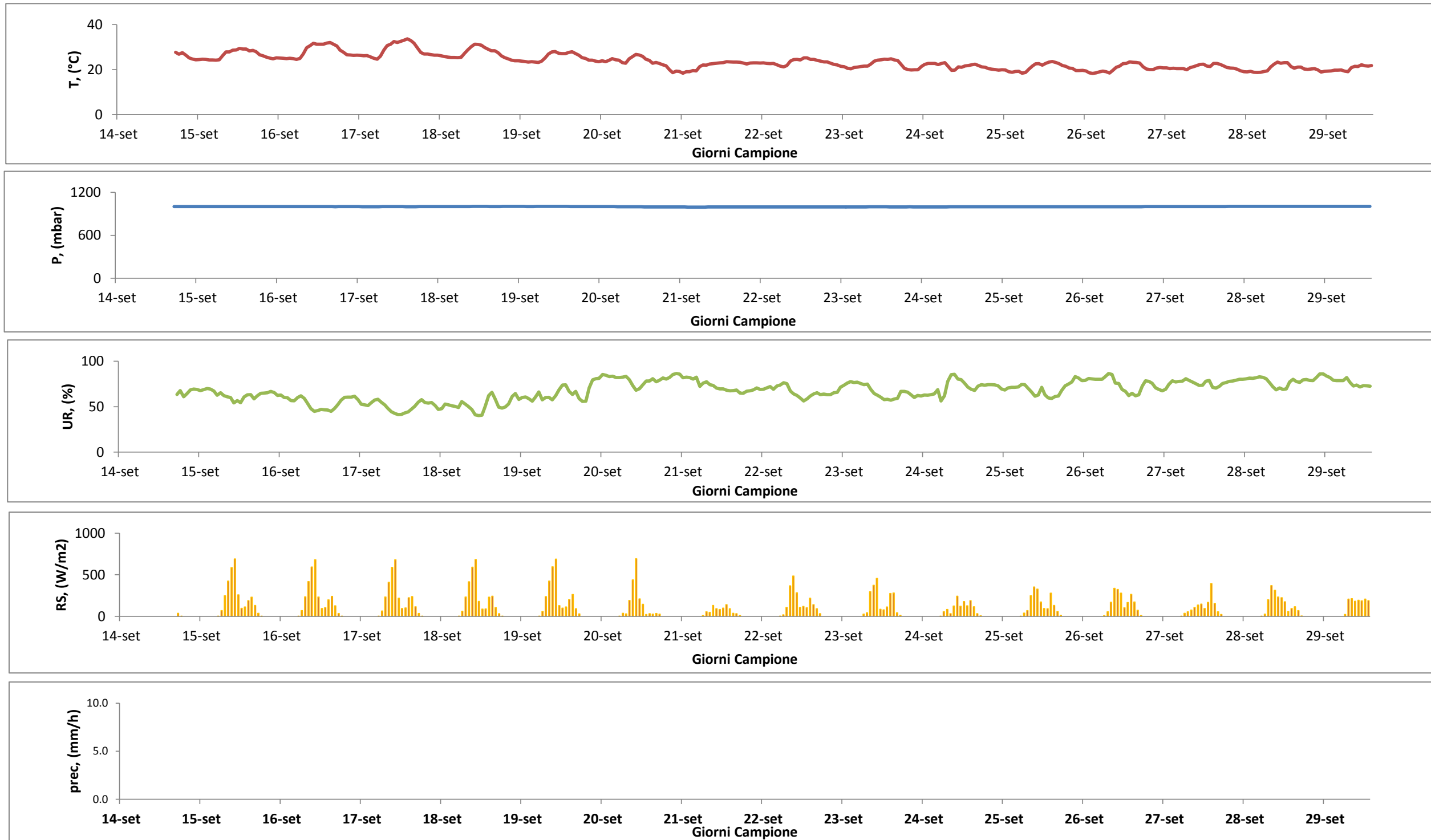
ANDAMENTO PARAMETRI METEOROLOGICI					
27 set 2015					
Ora	Temperatura	Pressione	Umidità Relativa	Radiazione Solare	Pioggia
	°C	mbar	%	W/m ²	mm
1.00	20.75	1000.72	69.07	0.00	0.00
2.00	20.47	1000.56	74.67	0.00	0.00
3.00	20.64	1000.23	78.41	0.00	0.00
4.00	20.42	1000.17	77.13	0.00	0.00
5.00	20.39	1000.02	77.83	0.00	0.00
6.00	20.44	1000.18	77.88	0.15	0.00
7.00	19.92	1000.67	80.70	36.48	0.00
8.00	20.89	1001.22	78.92	53.83	0.00
9.00	21.28	1001.60	77.05	74.53	0.00
10.00	21.76	1001.92	75.30	108.23	0.00
11.00	22.28	1002.20	73.41	135.39	0.00
12.00	22.37	1002.33	73.64	146.69	0.00
13.00	21.56	1002.26	77.89	94.31	0.00
14.00	21.35	1002.11	78.91	167.62	0.00
15.00	22.71	1001.83	71.27	394.32	0.00
16.00	22.78	1001.74	70.31	156.10	0.00
17.00	22.32	1001.93	72.18	53.70	0.00
18.00	21.59	1002.15	75.44	23.32	0.00
19.00	20.97	1002.36	76.48	0.00	0.00
20.00	20.67	1002.76	77.81	0.00	0.00
21.00	20.60	1003.07	78.10	0.00	0.00
22.00	20.16	1003.27	79.07	0.00	0.00
23.00	19.45	1003.13	80.14	0.00	0.00
24.00	19.06	1003.13	80.07	0.00	0.00

AUTOSTRADA SALERNO-REGGIO CALABRIA *Scheda di Monitoraggio Matrice Atmosfera*

ANDAMENTO PARAMETRI METEOROLOGICI					
28 set 2015					
Ora	Temperatura	Pressione	Umidità Relativa	Radiazione Solare	Pioggia
	°C	mbar	%	W/m ²	mm
1.00	19.01	1003.52	80.49	0.00	0.00
2.00	19.22	1003.37	81.44	0.00	0.00
3.00	18.78	1003.24	81.21	0.00	0.00
4.00	18.70	1003.10	81.87	0.00	0.00
5.00	18.80	1003.32	82.86	0.00	0.00
6.00	19.18	1003.16	82.21	0.29	0.00
7.00	19.39	1003.19	80.71	26.26	0.00
8.00	21.21	1003.22	76.21	199.26	0.00
9.00	22.40	1003.71	71.76	369.75	0.00
10.00	23.34	1004.06	68.57	313.68	0.00
11.00	22.81	1004.07	70.63	231.61	0.00
12.00	23.06	1003.99	68.89	222.34	0.00
13.00	23.10	1003.99	69.55	175.47	0.00
14.00	21.38	1003.70	77.15	59.50	0.00
15.00	20.61	1003.29	80.02	93.12	0.00
16.00	21.11	1003.19	77.48	114.70	0.00
17.00	21.14	1002.92	76.73	68.59	0.00
18.00	20.30	1003.19	79.52	4.07	0.00
19.00	20.11	1003.27	79.96	0.00	0.00
20.00	20.25	1003.58	78.74	0.00	0.00
21.00	20.44	1003.84	78.57	0.00	0.00
22.00	19.92	1003.93	82.13	0.00	0.00
23.00	18.87	1003.87	86.01	0.00	0.00
24.00	19.22	1003.78	85.98	0.00	0.00

ANDAMENTO PARAMETRI METEOROLOGICI					
29 set 2015					
Ora	Temperatura	Pressione	Umidità Relativa	Radiazione Solare	Pioggia
	°C	mbar	%	W/m ²	mm
1.00	19.36	1003.55	83.60	0.00	0.00
2.00	19.40	1003.46	82.04	0.00	0.00
3.00	19.74	1003.32	78.96	0.00	0.00
4.00	19.78	1003.19	78.67	0.00	0.00
5.00	19.81	1003.30	78.67	0.00	0.00
6.00	19.36	1003.47	78.66	0.00	0.00
7.00	19.06	1003.84	81.91	21.74	0.00
8.00	20.82	1004.11	76.64	207.40	0.00
9.00	21.43	1004.34	72.68	211.66	0.00
10.00	21.36	1004.93	73.67	182.79	0.00
11.00	<<	<<	<<	<<	<<
12.00	<<	<<	<<	<<	<<
13.00	<<	<<	<<	<<	<<
14.00	<<	<<	<<	<<	<<
15.00	<<	<<	<<	<<	<<
16.00	<<	<<	<<	<<	<<
17.00	<<	<<	<<	<<	<<
18.00	<<	<<	<<	<<	<<
19.00	<<	<<	<<	<<	<<
20.00	<<	<<	<<	<<	<<
21.00	<<	<<	<<	<<	<<
22.00	<<	<<	<<	<<	<<
23.00	<<	<<	<<	<<	<<
24.00	<<	<<	<<	<<	<<

AUTOSTRADA SALERNO-REGGIO CALABRIA Scheda di Monitoraggio Matrice Atmosfera



T=Temperatura
espressa in °C

P=Pressione
espressa in
mbar

UR=Umidità
Relativa espressa
in percentuale

RS=Radiazione
Solare
Espressa in W/m²

prec=
Precipitazione
Espressa in
mm/h