

ESECUZIONE E GESTIONE DELLE ATTIVITA' DI MONITORAGGIO IN CORSO D'OPERA E POST OPERAM DELLE COMPONENTI AMBIENTALI DEI LUOGHI INTERESSATI DALLA REALIZZAZIONE DELLE OPERE APPARTENENTI AL MACROLOTTO VI, NONCHE' ATTIVITA' DI MONITORAGGIO IN CORSO D'OPERA DELL'AREA DI CAMPO CALABRO

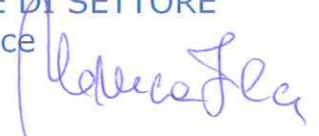
II CAMPAGNA 2015

COMPONENTE ATMOSFERA

Rapporto di Prova

CODICE: **PODG87PRATM03bisNL0120150811**

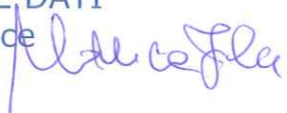
RESPONSABILE DI SETTORE
Ing. Monica Filice



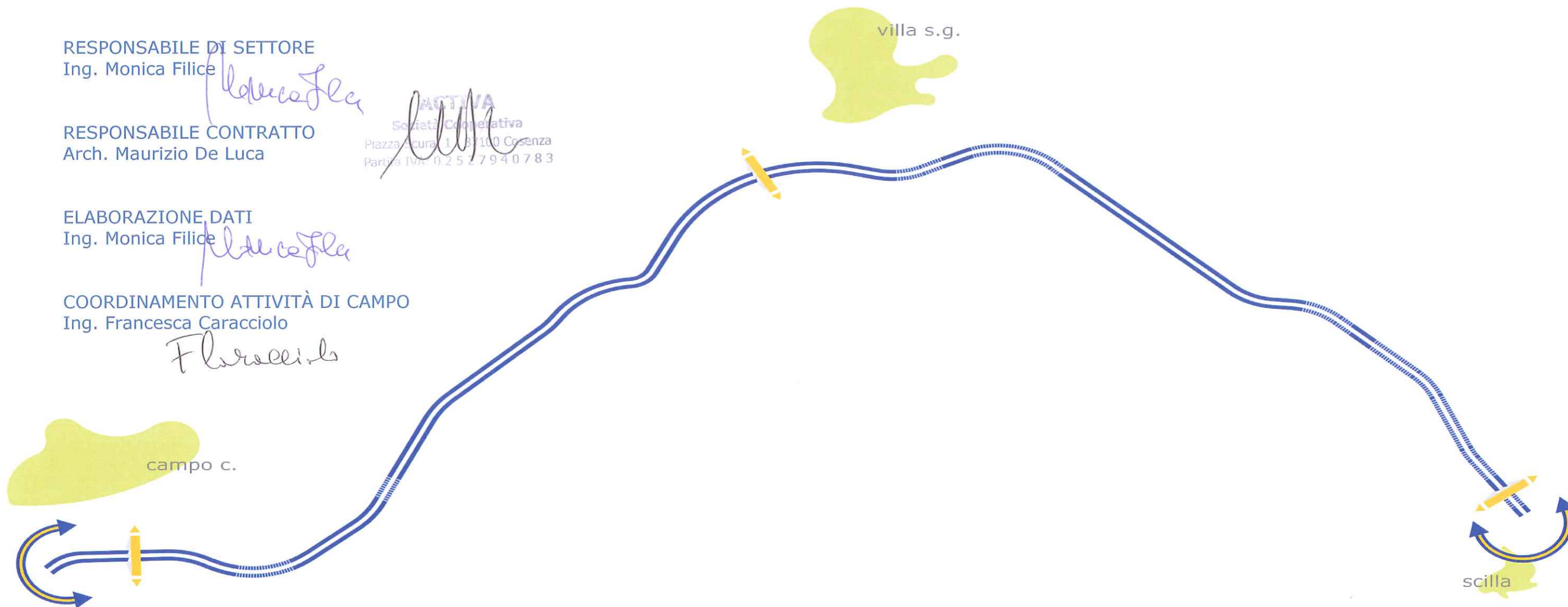
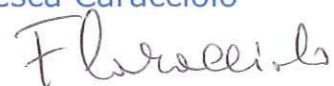
RESPONSABILE CONTRATTO
Arch. Maurizio De Luca

ACTIVA
Società Cooperativa
Piazza Scura 1 - 87100 Cosenza
Partita IVA: 02527940783

ELABORAZIONE DATI
Ing. Monica Filice



COORDINAMENTO ATTIVITÀ DI CAMPO
Ing. Francesca Caracciolo



AUTOSTRADA SALERNO-REGGIO CALABRIA Scheda di Monitoraggio Matrice Atmosfera

INQUADRAMENTO TERRITORIALE

Pto monitoraggio	PRATM03bis	
Ubicazione	Villa San Giovanni (RC)	Loc. PIALE
Coordinate	38° 13' 27.50" N	15° 38' 52.85" E

DISTANZA DAI PRINCIPALI RICETTORI SENSIBILI

SCUOLA	-----		AREA DI PREGIO NATURALISTICO	-----
RESIDENZIALE ISOLATO	-----		EDIFICIO DI CULTO	-----
RESIDENZIALE PRODUTTIVO	-----	x	RESIDENZIALE AGGLOMERATO	0 m
EDIFICIO STORICO	-----		RUDERE ASSIMILABILE	-----
AREA AGRICOLA	-----		ATTIVITA' PRODUTTIVA	-----

POSIZIONE DEL RILIEVO



DOCUMENTAZIONE FOTOGRAFICA



DISTANZA DALLE PRINCIPALI SORGENTI INQUINANTI

X	AUTOSTRADA	150 m	X	STRADA VICINALE	0 m
	INDUSTRIE	-----		FERMATA AUTOBUS	-----
	CANTIERI	-----		STRADA STATALE	-----
	PARCHEGGIO	-----			-----

MONITORAGGIO QUALITA' DELL'ARIA

DATA INIZIO	10 AGOSTO 2015	DATA FINE	25 AGOSTO 2015
NOTE	Si segnala lo slittamento del campionamento di BTEX fino al raggiungimento di due settimane di dati utili.		

AUTOSTRADA SALERNO-REGGIO CALABRIA *Scheda di Monitoraggio Matrice Atmosfera*

ANDAMENTO INQUINANTI AERODISPERSI ~ 10 ago 2015								
Ora	O ₃	NO ₂	NO	NO _x	CO	PM ₁₀	PM _{2.5}	SO ₂
	media oraria	media oraria	media oraria	media oraria	media oraria	media oraria	media oraria	media oraria
	µg/m ³	µg/m ³	µg/m ³	µg/m ³	mg/m ³	µg/m ³	µg/m ³	µg/m ³
1.00	<<	<<	<<	<<	<<	<<	<<	<<
2.00	<<	<<	<<	<<	<<	<<	<<	<<
3.00	<<	<<	<<	<<	<<	<<	<<	<<
4.00	<<	<<	<<	<<	<<	<<	<<	<<
5.00	<<	<<	<<	<<	<<	<<	<<	<<
6.00	<<	<<	<<	<<	<<	<<	<<	<<
7.00	<<	<<	<<	<<	<<	<<	<<	<<
8.00	<<	<<	<<	<<	<<	<<	<<	<<
9.00	<<	<<	<<	<<	<<	<<	<<	<<
10.00	<<	<<	<<	<<	<<	<<	<<	<<
11.00	<<	<<	<<	<<	<<	<<	<<	<<
12.00	<<	<<	<<	<<	<<	<<	<<	<<
13.00	<<	<<	<<	<<	<<	<<	<<	<<
14.00	<<	<<	<<	<<	<<	<<	<<	<<
15.00	<<	<<	<<	<<	<<	<<	<<	<<
16.00	<<	<<	<<	<<	<<	<<	<<	<<
17.00	<<	<<	<<	<<	<<	<<	<<	<<
18.00	99.34	18.59	0.31	19.07	0.18	25.82	13.50	3.92
19.00	109.71	27.55	1.67	30.10	0.11	36.83	18.61	4.08
20.00	112.99	9.41	0.32	9.90	0.17	39.75	19.91	4.07
21.00	86.14	20.29	0.65	21.28	0.16	43.01	22.77	3.87
22.00	90.96	6.85	0.42	7.50	0.11	25.32	11.65	3.83
23.00	87.04	7.38	0.34	7.90	0.13	27.98	13.03	3.79
24.00	93.36	2.73	0.42	3.37	0.11	30.31	13.89	3.79

Massimo	112.99	27.55	1.67	30.10	0.18	43.01	22.77	4.08
Minimo	86.14	2.73	0.31	3.37	0.11	25.32	11.65	3.79
Media	97.08	13.26	0.59	14.16	0.14	32.72	16.19	3.91
Dev. St.	10.72	8.98	0.49	9.55	0.03	7.10	4.20	0.12

ANDAMENTO INQUINANTI AERODISPERSI ~ 11 ago 2015								
Ora	O ₃	NO ₂	NO	NO _x	CO	PM ₁₀	PM _{2.5}	SO ₂
	media oraria	media oraria	media oraria	media oraria	media oraria	media oraria	media oraria	media oraria
	µg/m ³	µg/m ³	µg/m ³	µg/m ³	mg/m ³	µg/m ³	µg/m ³	µg/m ³
1.00	83.78	2.41	0.23	2.76	0.12	31.46	15.19	3.72
2.00	74.92	<<	<<	<<	0.13	30.08	14.48	3.70
3.00	80.47	4.61	0.25	4.99	0.13	27.07	12.93	3.71
4.00	80.14	2.72	0.44	3.39	0.14	29.81	14.21	3.72
5.00	62.49	6.40	0.43	7.07	0.18	35.75	17.24	3.59
6.00	47.06	11.42	0.25	11.80	0.16	36.24	17.42	3.43
7.00	58.60	9.69	0.41	10.31	0.23	30.81	15.23	3.51
8.00	80.60	8.54	0.76	9.70	0.26	25.20	13.03	3.70
9.00	75.19	15.01	0.77	16.20	0.22	24.75	12.53	3.67
10.00	81.74	12.31	0.86	13.63	0.22	24.24	12.28	3.74
11.00	90.82	7.05	0.30	7.50	0.19	21.05	11.60	3.78
12.00	83.30	6.80	0.14	7.02	0.18	18.95	8.97	3.65
13.00	92.83	3.05	0.29	3.49	0.15	19.24	9.49	3.80
14.00	86.39	4.08	0.41	4.72	0.16	13.39	5.94	3.56
15.00	73.73	10.29	0.30	10.76	0.12	10.89	5.31	3.56
16.00	78.66	7.59	0.62	8.54	0.13	8.97	5.28	3.48
17.00	75.74	16.53	0.72	17.63	0.17	10.99	5.63	3.61
18.00	85.32	12.02	0.95	13.47	0.18	12.66	6.64	3.70
19.00	82.01	8.53	0.44	9.20	0.17	12.64	6.89	3.64
20.00	72.75	17.79	0.27	18.20	0.15	12.94	6.74	3.53
21.00	79.61	5.73	0.31	6.21	0.13	14.58	7.29	3.62
22.00	75.13	6.02	0.31	6.49	0.13	15.89	7.66	3.59
23.00	55.84	8.79	0.23	9.13	0.13	16.14	8.51	3.34
24.00	52.16	7.72	0.23	8.07	0.13	18.58	9.23	3.35

Massimo	92.83	17.79	0.95	18.20	0.26	36.24	17.42	3.80
Minimo	47.06	2.41	0.14	2.76	0.12	8.97	5.28	3.34
Media	75.39	8.48	0.43	9.14	0.16	20.93	10.41	3.61
Dev. St.	11.92	4.23	0.23	4.40	0.04	8.36	3.93	0.12

AUTOSTRADA SALERNO-REGGIO CALABRIA

Scheda di Monitoraggio Matrice Atmosfera

ANDAMENTO INQUINANTI AERODISPERSI ~ 12 ago 2015								
Ora	O ₃	NO ₂	NO	NO _x	CO	PM ₁₀	PM _{2.5}	SO ₂
	media oraria	media oraria	media oraria	media oraria	media oraria	media oraria	media oraria	media oraria
	µg/m ³	µg/m ³	µg/m ³	µg/m ³	mg/m ³	µg/m ³	µg/m ³	µg/m ³
1.00	60.50	<<	<<	<<	0.14	16.33	8.37	3.46
2.00	59.66	6.95	0.38	7.53	0.12	18.66	9.69	3.43
3.00	63.94	3.91	0.15	4.14	0.14	20.57	10.20	3.45
4.00	65.87	3.29	0.12	3.47	0.11	18.17	9.40	3.45
5.00	66.76	3.34	0.35	3.87	0.13	16.76	8.39	3.42
6.00	38.42	8.54	0.15	8.78	0.19	21.31	10.59	3.19
7.00	49.32	15.32	0.23	15.67	0.16	17.21	8.89	3.32
8.00	57.66	12.24	0.21	12.57	0.20	11.68	6.11	3.39
9.00	74.77	7.84	0.35	8.38	0.21	10.58	5.55	3.56
10.00	89.94	6.92	0.46	7.62	0.24	10.79	6.61	3.68
11.00	86.35	10.36	0.32	10.86	0.35	13.83	6.93	3.67
12.00	82.92	12.22	0.71	13.31	0.25	14.70	8.26	3.72
13.00	85.87	6.13	0.25	6.52	0.23	17.80	9.29	3.74
14.00	100.69	3.56	0.24	3.93	0.18	11.07	5.48	3.82
15.00	97.63	6.19	0.14	6.41	0.19	6.56	3.61	3.76
16.00	85.75	12.42	0.33	12.92	0.19	12.19	5.54	3.68
17.00	89.75	2.84	0.52	3.63	0.19	10.47	5.81	3.70
18.00	94.39	3.95	0.25	4.33	0.20	11.10	5.40	3.76
19.00	87.92	8.74	0.70	9.81	0.21	12.02	6.33	3.65
20.00	67.41	22.71	0.52	23.51	0.24	12.04	6.73	3.46
21.00	76.32	12.27	0.48	13.00	0.23	12.00	6.70	3.58
22.00	64.00	10.94	0.47	11.67	0.20	12.85	6.61	3.46
23.00	64.49	17.95	0.75	19.10	0.19	12.16	6.95	3.44
24.00	64.87	<<	<<	<<	0.21	12.62	6.91	3.49

Massimo	100.69	22.71	0.75	23.51	0.35	21.31	10.59	3.82
Minimo	38.42	2.84	0.12	3.47	0.11	6.56	3.61	3.19
Media	73.97	9.03	0.37	9.59	0.20	13.90	7.27	3.55
Dev. St.	16.11	5.20	0.19	5.33	0.05	3.66	1.77	0.16

ANDAMENTO INQUINANTI AERODISPERSI ~ 13 ago 2015								
Ora	O ₃	NO ₂	NO	NO _x	CO	PM ₁₀	PM _{2.5}	SO ₂
	media oraria	media oraria	media oraria	media oraria	media oraria	media oraria	media oraria	media oraria
	µg/m ³	µg/m ³	µg/m ³	µg/m ³	mg/m ³	µg/m ³	µg/m ³	µg/m ³
1.00	66.48	6.10	0.29	6.54	0.20	8.77	5.04	3.43
2.00	68.43	2.67	0.28	3.10	0.18	9.23	4.78	3.47
3.00	77.71	12.72	0.31	13.20	0.18	8.53	4.98	3.57
4.00	82.19	3.98	0.14	4.19	0.14	6.63	3.69	3.56
5.00	89.44	2.81	0.09	2.96	0.14	6.61	4.10	3.63
6.00	79.40	4.06	0.12	4.24	0.18	7.79	4.14	3.53
7.00	56.10	9.76	0.17	10.02	0.21	11.09	6.21	3.37
8.00	66.78	7.70	0.13	7.89	0.23	10.62	6.14	3.48
9.00	82.70	7.61	0.33	8.12	0.25	9.23	5.26	3.54
10.00	83.60	5.30	0.28	5.73	0.25	12.44	6.91	3.59
11.00	94.14	9.01	0.28	9.43	0.35	18.82	11.25	3.79
12.00	86.22	7.69	0.30	8.15	0.32	19.20	10.28	3.76
13.00	103.16	4.38	0.27	4.80	0.28	17.14	9.97	3.88
14.00	98.05	2.09	0.20	2.40	0.25	15.86	9.44	3.83
15.00	84.52	6.15	0.26	6.56	0.32	17.56	10.23	3.72
16.00	101.35	4.85	0.32	5.34	0.30	20.15	11.45	3.88
17.00	99.55	7.06	0.11	7.23	0.36	22.56	13.11	3.89
18.00	89.76	12.31	0.30	12.77	0.34	22.51	12.33	3.84
19.00	106.19	12.57	0.20	12.89	0.38	28.66	14.67	3.98
20.00	95.06	16.05	0.45	16.74	0.37	32.12	16.83	3.92
21.00	83.20	15.69	0.37	16.26	0.34	33.04	16.29	3.80
22.00	96.50	10.25	0.47	10.96	0.31	32.92	17.03	3.88
23.00	107.65	<<	<<	<<	0.31	34.58	17.34	4.02
24.00	89.84	13.77	0.27	14.18	0.33	37.58	18.64	3.88

Massimo	107.65	16.05	0.47	16.74	0.38	37.58	18.64	4.02
Minimo	56.10	2.09	0.09	2.40	0.14	6.61	3.69	3.37
Media	87.00	8.03	0.26	8.42	0.27	18.49	10.00	3.72
Dev. St.	13.38	4.20	0.10	4.29	0.07	9.98	4.90	0.19

AUTOSTRADA SALERNO-REGGIO CALABRIA *Scheda di Monitoraggio Matrice Atmosfera*

ANDAMENTO INQUINANTI AERODISPERSI ~ 14 ago 2015								
Ora	O ₃	NO ₂	NO	NO _x	CO	PM ₁₀	PM _{2.5}	SO ₂
	media oraria	media oraria	media oraria	media oraria	media oraria	media oraria	media oraria	media oraria
	µg/m ³	µg/m ³	µg/m ³	µg/m ³	mg/m ³	µg/m ³	µg/m ³	µg/m ³
1.00	91.85	18.73	0.39	19.34	0.38	37.27	19.32	3.85
2.00	88.87	7.77	0.44	8.45	0.31	35.69	18.05	3.82
3.00	96.54	3.59	0.28	4.02	0.31	32.70	16.68	3.85
4.00	101.80	2.34	0.50	3.10	0.31	31.17	16.00	3.85
5.00	102.98	1.88	0.21	2.20	0.31	29.05	15.52	3.84
6.00	88.51	4.70	0.26	5.10	0.29	28.99	15.10	3.76
7.00	85.73	5.84	0.39	6.44	0.33	25.97	13.81	3.75
8.00	100.68	8.02	0.62	8.97	0.33	26.57	14.87	3.91
9.00	92.43	13.21	0.23	13.56	0.35	27.49	14.97	3.86
10.00	95.31	14.78	0.42	15.43	0.39	25.05	14.06	3.86
11.00	96.25	7.94	0.17	8.21	0.40	24.61	14.48	3.86
12.00	104.00	11.56	0.36	12.12	0.39	26.43	14.21	3.93
13.00	104.65	4.86	0.12	5.05	0.34	25.73	13.73	3.90
14.00	103.29	3.41	0.18	3.69	0.33	25.84	13.74	3.86
15.00	91.43	2.60	0.21	2.92	0.35	25.72	14.30	3.77
16.00	107.17	2.01	0.17	2.28	0.33	25.85	13.94	3.89
17.00	93.95	6.35	0.20	6.65	0.34	27.60	15.12	3.80
18.00	101.51	7.41	0.36	7.95	0.36	29.38	15.10	3.90
19.00	90.92	9.66	0.09	9.80	0.44	32.23	16.75	3.85
20.00	88.12	19.97	0.49	20.72	0.40	37.36	19.26	3.88
21.00	77.27	16.15	0.52	16.94	0.34	37.10	19.67	3.75
22.00	99.88	<<	<<	<<	0.35	36.27	18.63	3.96
23.00	83.97	7.78	0.31	8.26	0.37	41.73	21.43	3.81
24.00	84.47	7.88	0.31	8.36	0.38	42.25	21.58	3.83

Massimo	107.17	19.97	0.62	20.72	0.44	42.25	21.58	3.96
Minimo	77.27	1.88	0.09	2.20	0.29	24.61	13.73	3.75
Media	94.65	8.19	0.31	8.68	0.35	30.75	16.26	3.85
Dev. St.	7.82	5.29	0.14	5.39	0.04	5.50	2.49	0.06

ANDAMENTO INQUINANTI AERODISPERSI ~ 15 ago 2015								
Ora	O ₃	NO ₂	NO	NO _x	CO	PM ₁₀	PM _{2.5}	SO ₂
	media oraria	media oraria	media oraria	media oraria	media oraria	media oraria	media oraria	media oraria
	µg/m ³	µg/m ³	µg/m ³	µg/m ³	mg/m ³	µg/m ³	µg/m ³	µg/m ³
1.00	80.19	9.57	0.26	9.97	0.36	39.98	20.30	3.77
2.00	94.29	4.79	0.14	5.00	0.37	36.80	18.81	3.86
3.00	79.73	4.79	0.41	5.42	0.38	38.95	20.73	3.75
4.00	90.29	4.27	0.21	4.60	0.34	35.05	18.42	3.83
5.00	82.54	2.10	0.36	2.65	0.32	39.90	19.58	3.72
6.00	71.21	6.22	0.47	6.94	0.53	41.86	21.16	3.66
7.00	73.46	10.30	0.40	10.90	0.40	51.61	26.47	3.76
8.00	77.75	7.35	0.37	7.93	0.37	30.39	16.64	3.74
9.00	87.73	6.15	0.39	6.75	0.38	28.16	15.45	3.79
10.00	96.18	6.27	0.27	6.68	0.36	24.94	13.98	3.85
11.00	100.23	7.40	0.41	8.03	0.38	25.88	14.43	3.90
12.00	95.49	5.32	0.20	5.62	0.34	24.49	14.15	3.81
13.00	92.90	3.20	0.24	3.57	0.31	23.95	12.96	3.79
14.00	93.75	2.32	0.24	2.69	0.32	23.30	13.15	3.80
15.00	82.33	4.62	0.37	5.18	0.33	25.15	13.63	3.72
16.00	84.74	8.30	0.39	8.91	0.35	21.36	12.39	3.72
17.00	93.31	10.73	0.37	11.30	0.31	16.19	9.63	3.82
18.00	100.66	4.62	0.16	4.87	0.34	16.43	9.35	3.83
19.00	88.93	10.37	0.39	10.96	0.35	21.42	11.13	3.83
20.00	87.91	11.02	0.47	11.75	0.36	33.60	16.70	3.82
21.00	81.94	<<	<<	<<	0.31	21.47	11.58	3.71
22.00	71.73	5.15	0.14	5.37	0.29	21.87	11.14	3.59
23.00	63.42	10.76	0.21	11.09	0.30	22.28	12.24	3.51
24.00	64.30	14.21	0.39	14.81	0.34	20.96	11.04	3.51

Massimo	100.66	14.21	0.47	14.81	0.53	51.61	26.47	3.90
Minimo	63.42	2.10	0.14	2.65	0.29	16.19	9.35	3.51
Media	84.79	6.95	0.32	7.43	0.35	28.58	15.21	3.75
Dev. St.	10.60	3.19	0.11	3.26	0.05	9.11	4.30	0.10

AUTOSTRADA SALERNO-REGGIO CALABRIA *Scheda di Monitoraggio Matrice Atmosfera*

ANDAMENTO INQUINANTI AERODISPERSI ~ 16 ago 2015								
	O ₃	NO ₂	NO	NO _x	CO	PM ₁₀	PM _{2.5}	SO ₂
Ora	media oraria	media oraria	media oraria	media oraria	media oraria	media oraria	media oraria	media oraria
	µg/m ³	µg/m ³	µg/m ³	µg/m ³	mg/m ³	µg/m ³	µg/m ³	µg/m ³
1.00	59.40	12.31	0.08	12.44	0.29	20.34	10.49	3.45
2.00	73.43	2.23	0.27	2.64	0.25	19.76	9.86	3.54
3.00	60.76	2.09	0.29	2.53	0.25	23.71	11.44	3.41
4.00	63.01	2.09	0.22	2.43	0.26	23.12	10.94	3.47
5.00	55.17	2.29	0.19	2.58	0.25	23.77	10.73	3.36
6.00	53.77	2.11	0.23	2.46	0.23	25.10	11.26	3.39
7.00	51.70	3.34	0.14	3.55	0.27	23.77	10.83	3.38
8.00	67.77	2.24	0.39	2.83	0.25	16.62	9.09	3.49
9.00	81.11	2.97	0.28	3.39	0.29	16.86	10.94	3.67
10.00	81.60	9.36	0.18	9.63	0.26	14.63	7.62	3.64
11.00	90.59	10.60	0.24	10.97	0.26	14.96	8.78	3.74
12.00	91.41	5.78	0.16	6.03	0.28	16.13	8.27	3.74
13.00	91.68	7.08	0.28	7.51	0.29	14.58	8.25	3.75
14.00	97.93	4.35	0.18	4.63	0.24	8.74	5.17	3.76
15.00	91.81	8.86	0.23	9.21	0.30	6.33	3.70	3.70
16.00	92.06	9.01	0.27	9.43	0.25	7.70	3.73	3.70
17.00	87.14	3.70	0.36	4.26	0.26	8.84	3.80	3.66
18.00	89.53	5.82	0.24	6.19	0.27	7.65	3.47	3.66
19.00	90.04	4.94	0.15	5.18	0.26	8.28	3.86	3.67
20.00	91.48	<<	<<	<<	0.32	9.69	4.88	3.65
21.00	91.41	3.83	0.26	4.22	0.24	8.42	3.99	3.65
22.00	77.68	6.14	0.18	6.42	0.25	10.04	3.83	3.51
23.00	76.54	6.56	0.32	7.05	0.20	8.23	4.12	3.48
24.00	63.93	5.59	0.24	5.95	0.17	8.35	4.27	3.32

Massimo	97.93	12.31	0.39	12.44	0.32	25.10	11.44	3.76
Minimo	51.70	2.09	0.08	2.43	0.17	6.33	3.47	3.32
Media	77.96	5.36	0.23	5.72	0.26	14.40	7.22	3.58
Dev. St.	14.82	3.01	0.07	2.98	0.03	6.39	3.12	0.14

ANDAMENTO INQUINANTI AERODISPERSI ~ 17 ago 2015								
	O ₃	NO ₂	NO	NO _x	CO	PM ₁₀	PM _{2.5}	SO ₂
Ora	media oraria	media oraria	media oraria	media oraria	media oraria	media oraria	media oraria	media oraria
	µg/m ³	µg/m ³	µg/m ³	µg/m ³	mg/m ³	µg/m ³	µg/m ³	µg/m ³
1.00	71.28	2.58	0.37	3.14	0.17	7.99	4.00	3.37
2.00	72.97	2.17	0.18	2.44	0.17	7.34	4.30	3.41
3.00	73.50	1.98	0.24	2.35	0.16	6.49	3.41	3.42
4.00	60.17	2.00	0.23	2.35	0.16	6.23	3.03	3.27
5.00	64.38	1.83	0.21	2.15	0.17	5.45	3.23	3.29
6.00	59.68	2.74	0.22	3.08	0.17	6.11	3.75	3.26
7.00	60.69	8.21	0.35	8.75	0.26	6.31	3.49	3.24
8.00	70.20	13.77	0.39	14.37	0.29	5.48	3.26	3.39
9.00	62.76	22.51	0.51	23.29	0.25	7.08	4.27	3.39
10.00	73.43	13.15	0.36	13.70	0.23	5.93	3.44	3.48
11.00	76.31	12.96	0.28	13.38	0.25	6.33	5.16	3.52
12.00	82.63	13.23	0.50	14.00	0.26	5.79	3.66	3.61
13.00	76.29	7.50	0.32	8.00	0.25	6.33	3.89	3.53
14.00	72.72	7.32	0.32	7.82	0.25	5.81	3.73	3.50
15.00	75.45	5.05	0.46	5.77	0.21	6.10	2.70	3.53
16.00	73.62	4.76	0.14	4.96	0.23	3.97	2.55	3.47
17.00	72.66	2.70	0.18	2.98	0.20	4.97	2.62	3.47
18.00	74.07	4.94	0.40	5.56	0.24	6.27	3.26	3.52
19.00	72.85	<<	<<	<<	0.23	6.12	3.90	3.53
20.00	62.49	15.30	0.30	15.75	0.22	7.62	3.95	3.42
21.00	56.13	11.79	0.24	12.16	0.19	7.36	3.97	3.26
22.00	62.42	9.51	0.28	9.94	0.18	6.69	3.59	3.30
23.00	63.95	8.45	0.34	8.97	0.17	6.17	2.71	3.34
24.00	79.21	6.49	0.29	6.94	0.26	6.58	3.71	3.48

Massimo	82.63	22.51	0.51	23.29	0.29	7.99	5.16	3.61
Minimo	56.13	1.83	0.14	2.15	0.16	3.97	2.55	3.24
Media	69.58	7.87	0.31	8.34	0.22	6.27	3.57	3.42
Dev. St.	7.08	5.45	0.10	5.54	0.04	0.86	0.61	0.11

AUTOSTRADA SALERNO-REGGIO CALABRIA *Scheda di Monitoraggio Matrice Atmosfera*

ANDAMENTO INQUINANTI AERODISPERSI ~ 18 ago 2015								
Ora	O ₃	NO ₂	NO	NO _x	CO	PM ₁₀	PM _{2.5}	SO ₂
	media oraria	media oraria	media oraria	media oraria	media oraria	media oraria	media oraria	media oraria
	µg/m ³	µg/m ³	µg/m ³	µg/m ³	mg/m ³	µg/m ³	µg/m ³	µg/m ³
1.00	78.05	6.52	0.12	6.69	0.16	7.16	3.94	3.47
2.00	79.78	1.36	0.19	1.65	0.16	6.12	3.80	3.45
3.00	64.35	4.33	0.20	4.64	0.15	6.12	3.15	3.25
4.00	83.92	2.47	0.09	2.61	0.14	6.53	3.60	3.48
5.00	83.82	1.01	0.12	1.19	0.15	5.34	3.22	3.44
6.00	82.12	1.55	0.18	1.83	0.15	5.38	2.58	3.48
7.00	76.39	4.57	0.12	4.75	0.16	5.33	3.22	3.43
8.00	76.44	9.41	0.42	10.05	0.21	5.91	3.39	3.44
9.00	81.55	9.60	0.15	9.83	0.26	5.85	3.79	3.51
10.00	72.53	10.53	0.18	10.80	0.25	5.57	3.63	3.45
11.00	89.31	8.27	0.34	8.79	0.25	5.05	3.70	3.63
12.00	79.94	5.09	0.22	5.43	0.25	5.74	3.41	3.53
13.00	92.70	3.97	0.22	4.31	0.21	8.07	3.78	3.66
14.00	82.92	6.08	0.37	6.65	0.21	6.56	5.42	3.57
15.00	81.96	2.96	0.19	3.25	0.20	8.13	4.96	3.54
16.00	80.05	3.24	0.18	3.52	0.21	7.65	4.86	3.56
17.00	73.03	6.57	0.22	6.91	0.20	7.96	4.74	3.48
18.00	79.54	<<	<<	<<	0.22	6.69	4.57	3.58
19.00	80.47	4.28	0.28	4.71	0.23	7.39	3.93	3.56
20.00	77.71	3.12	0.51	3.90	0.19	6.90	4.22	3.50
21.00	70.81	3.34	0.18	3.62	0.18	8.24	4.27	3.39
22.00	61.06	6.10	0.20	6.40	0.18	9.29	5.61	3.32
23.00	55.53	13.30	0.19	13.59	0.19	7.93	4.94	3.24
24.00	49.94	14.62	0.13	14.82	0.19	8.29	4.89	3.17
Massimo	92.70	14.62	0.51	14.82	0.26	9.29	5.61	3.66
Minimo	49.94	1.01	0.09	1.19	0.14	5.05	2.58	3.17
Media	76.41	5.75	0.22	6.08	0.20	6.80	4.07	3.46
Dev. St.	10.04	3.70	0.10	3.71	0.04	1.19	0.78	0.12

ANDAMENTO INQUINANTI AERODISPERSI ~ 19 ago 2015								
Ora	O ₃	NO ₂	NO	NO _x	CO	PM ₁₀	PM _{2.5}	SO ₂
	media oraria	media oraria	media oraria	media oraria	media oraria	media oraria	media oraria	media oraria
	µg/m ³	µg/m ³	µg/m ³	µg/m ³	mg/m ³	µg/m ³	µg/m ³	µg/m ³
1.00	73.91	4.78	0.14	5.00	0.14	7.36	4.00	3.43
2.00	63.57	3.55	0.24	3.93	0.15	5.19	3.10	3.29
3.00	78.73	0.96	0.18	1.23	0.14	4.78	3.24	3.43
4.00	52.50	7.30	0.09	7.44	0.15	7.28	4.19	3.19
5.00	41.52	16.82	0.21	17.15	0.16	8.70	5.32	3.12
6.00	47.89	10.14	0.29	10.58	0.20	8.31	4.83	3.17
7.00	61.24	5.73	0.23	6.08	0.18	8.47	5.40	3.34
8.00	67.52	7.05	0.16	7.29	0.17	11.25	6.20	3.46
9.00	67.63	10.15	0.16	10.40	0.23	10.99	6.08	3.47
10.00	62.19	24.11	0.61	25.04	0.26	12.39	7.10	3.48
11.00	82.38	7.46	0.33	7.97	0.21	9.30	5.73	3.58
12.00	85.74	16.72	0.53	17.53	0.24	10.96	6.02	3.62
13.00	85.81	4.88	0.22	5.22	0.18	10.21	5.50	3.61
14.00	110.60	2.47	0.24	2.83	0.19	10.03	5.22	3.85
15.00	99.47	2.44	0.21	2.76	0.17	7.20	4.95	3.74
16.00	90.82	7.93	0.47	8.65	0.19	9.76	4.96	3.69
17.00	91.77	<<	<<	<<	0.23	8.81	4.70	3.69
18.00	88.95	8.92	0.15	9.16	0.21	8.26	5.50	3.64
19.00	85.31	11.88	0.19	12.17	0.23	9.90	6.43	3.65
20.00	79.69	13.18	0.38	13.76	0.23	9.93	5.20	3.56
21.00	88.70	7.54	0.18	7.81	0.20	12.31	5.79	3.68
22.00	75.38	3.98	0.40	4.60	0.19	11.76	5.87	3.50
23.00	69.09	7.30	0.37	7.88	0.19	12.68	6.67	3.49
24.00	70.61	9.46	0.65	10.46	0.16	12.50	6.37	3.51
Massimo	110.60	24.11	0.65	25.04	0.26	12.68	7.10	3.85
Minimo	41.52	0.96	0.09	1.23	0.14	4.78	3.10	3.12
Media	75.88	8.47	0.29	8.91	0.19	9.51	5.35	3.51
Dev. St.	16.42	5.38	0.15	5.50	0.03	2.19	1.00	0.19

AUTOSTRADA SALERNO-REGGIO CALABRIA *Scheda di Monitoraggio Matrici Atmosfera*

ANDAMENTO INQUINANTI AERODISPERSI ~ 20 ago 2015								
Ora	O ₃	NO ₂	NO	NO _x	CO	PM ₁₀	PM _{2.5}	SO ₂
	media oraria	media oraria	media oraria	media oraria	media oraria	media oraria	media oraria	media oraria
	µg/m ³	µg/m ³	µg/m ³	µg/m ³	mg/m ³	µg/m ³	µg/m ³	µg/m ³
1.00	70.86	5.00	0.33	5.51	0.18	13.68	6.34	3.48
2.00	59.38	4.32	0.17	4.59	0.19	11.29	5.69	3.35
3.00	69.04	2.03	0.22	2.37	0.16	10.46	5.90	3.43
4.00	65.23	1.93	0.17	2.20	0.15	9.67	4.84	3.37
5.00	75.27	0.92	0.22	1.26	0.13	10.22	5.04	3.47
6.00	65.67	3.29	0.20	3.59	0.14	9.72	4.82	3.34
7.00	73.78	2.23	0.15	2.46	0.17	10.16	5.41	3.47
8.00	68.94	4.21	0.23	4.57	0.17	9.74	4.99	3.41
9.00	70.16	4.64	0.20	4.94	0.24	7.50	5.10	3.42
10.00	76.70	5.55	0.32	6.04	0.22	4.91	3.72	3.50
11.00	79.10	3.20	0.32	3.69	0.18	5.27	3.16	3.53
12.00	76.81	2.36	0.20	2.67	0.17	4.75	3.84	3.50
13.00	90.93	2.65	0.27	3.06	0.15	5.42	3.49	3.64
14.00	93.47	2.02	0.18	2.30	0.14	5.69	3.15	3.66
15.00	98.54	2.45	0.13	2.64	0.15	7.54	4.12	3.73
16.00	79.06	<<	<<	<<	0.15	5.01	3.50	3.54
17.00	88.15	2.17	0.23	2.52	0.15	5.55	2.86	3.62
18.00	87.45	2.06	0.34	2.58	0.14	5.56	3.69	3.58
19.00	91.16	4.71	0.25	5.09	0.18	6.11	3.84	3.64
20.00	90.20	5.02	0.25	5.41	0.16	8.43	4.49	3.61
21.00	87.11	8.34	0.27	8.76	0.14	7.62	4.24	3.58
22.00	90.22	18.06	0.42	18.70	0.15	8.30	4.61	3.57
23.00	70.02	13.15	0.21	13.47	0.15	8.40	4.58	3.39
24.00	68.67	13.21	0.15	13.43	0.12	9.97	5.20	3.40

Massimo	98.54	18.06	0.42	18.70	0.24	13.68	6.34	3.73
Minimo	59.38	0.92	0.13	1.26	0.12	4.75	2.86	3.34
Media	78.58	4.94	0.24	5.30	0.16	7.96	4.44	3.51
Dev. St.	10.80	4.32	0.07	4.36	0.03	2.44	0.93	0.11

ANDAMENTO INQUINANTI AERODISPERSI ~ 21 ago 2015								
Ora	O ₃	NO ₂	NO	NO _x	CO	PM ₁₀	PM _{2.5}	SO ₂
	media oraria	media oraria	media oraria	media oraria	media oraria	media oraria	media oraria	media oraria
	µg/m ³	µg/m ³	µg/m ³	µg/m ³	mg/m ³	µg/m ³	µg/m ³	µg/m ³
1.00	70.68	14.01	0.23	14.35	0.12	10.87	5.52	3.42
2.00	77.65	4.89	0.24	5.26	0.11	12.26	5.96	3.47
3.00	82.33	2.16	0.26	2.57	0.11	9.46	5.09	3.50
4.00	81.25	2.21	0.06	2.30	0.10	10.02	5.21	3.45
5.00	83.16	2.04	0.15	2.27	0.12	12.86	6.96	3.55
6.00	43.76	11.65	0.15	11.88	0.12	19.64	10.59	3.24
7.00	39.29	12.78	0.16	13.03	0.19	18.68	8.85	3.12
8.00	50.27	12.34	0.21	12.66	0.18	12.36	6.53	3.26
9.00	74.93	8.73	0.54	9.55	0.21	7.92	5.22	3.44
10.00	84.87	6.60	0.31	7.07	0.18	8.76	5.98	3.62
11.00	102.40	4.26	0.18	4.53	0.15	8.70	6.50	3.80
12.00	101.06	3.27	0.23	3.61	0.13	10.69	6.02	3.79
13.00	99.88	3.09	0.27	3.51	0.14	8.50	5.05	3.78
14.00	100.22	2.10	0.15	2.33	0.15	7.32	4.47	3.72
15.00	92.45	<<	<<	<<	0.18	7.51	4.86	3.71
16.00	99.73	3.99	0.14	4.20	0.15	7.93	5.46	3.75
17.00	102.82	4.27	0.29	4.71	0.18	9.11	5.33	3.79
18.00	95.62	4.95	0.15	5.18	0.15	10.33	5.23	3.73
19.00	89.44	5.49	0.21	5.82	0.19	9.87	4.96	3.67
20.00	94.88	8.43	0.33	8.93	0.14	8.26	4.84	3.71
21.00	86.24	8.96	0.21	9.28	0.16	8.80	4.97	3.64
22.00	83.42	5.30	0.25	5.69	0.13	10.41	5.10	3.57
23.00	75.28	5.96	0.26	6.35	0.13	11.59	5.99	3.48
24.00	72.06	4.28	0.25	4.66	0.10	12.27	6.35	3.40

Massimo	102.82	14.01	0.54	14.35	0.21	19.64	10.59	3.80
Minimo	39.29	2.04	0.06	2.27	0.10	7.32	4.47	3.12
Media	82.65	6.16	0.23	6.51	0.15	10.59	5.88	3.57
Dev. St.	17.88	3.67	0.09	3.69	0.03	3.10	1.37	0.19

AUTOSTRADA SALERNO-REGGIO CALABRIA *Scheda di Monitoraggio Matrice Atmosfera*

ANDAMENTO INQUINANTI AERODISPERSI ~ 22 ago 2015								
Ora	O ₃	NO ₂	NO	NO _x	CO	PM ₁₀	PM _{2.5}	SO ₂
	media oraria	media oraria	media oraria	media oraria	media oraria	media oraria	media oraria	media oraria
	µg/m ³	µg/m ³	µg/m ³	µg/m ³	mg/m ³	µg/m ³	µg/m ³	µg/m ³
1.00	78.39	2.44	0.12	2.62	0.09	13.39	6.61	3.47
2.00	64.54	1.95	0.34	2.48	0.09	14.14	7.43	3.40
3.00	64.75	1.95	0.11	2.11	0.09	14.32	7.27	3.41
4.00	67.04	2.05	0.21	2.37	0.09	12.92	7.13	3.41
5.00	67.62	2.09	0.19	2.37	0.08	11.81	6.04	3.35
6.00	65.52	2.10	0.17	2.35	0.08	10.16	5.68	3.36
7.00	51.90	5.91	0.22	6.25	0.10	9.88	5.58	3.23
8.00	83.98	11.13	0.25	11.52	0.20	8.59	5.67	3.58
9.00	88.16	5.04	0.21	5.36	0.16	7.94	5.02	3.60
10.00	93.06	9.54	0.19	9.83	0.20	6.20	4.51	3.64
11.00	91.34	11.34	0.47	12.07	0.23	5.63	4.58	3.67
12.00	93.65	7.87	0.28	8.31	0.17	5.66	3.40	3.69
13.00	95.07	6.33	0.26	6.73	0.17	6.66	5.09	3.71
14.00	96.80	<<	<<	<<	0.16	6.40	3.95	3.72
15.00	105.40	2.70	0.26	3.10	0.14	6.23	3.64	3.80
16.00	115.44	2.30	0.15	2.52	0.13	5.58	4.33	3.88
17.00	112.23	2.17	0.13	2.36	0.14	7.59	4.74	3.85
18.00	111.97	2.15	0.02	2.17	0.17	10.14	5.41	3.86
19.00	99.88	6.83	0.27	7.25	0.16	12.17	6.51	3.79
20.00	87.01	11.47	0.16	11.72	0.16	12.10	7.15	3.64
21.00	75.85	26.77	0.72	27.88	0.16	13.00	7.73	3.59
22.00	72.27	16.09	0.30	16.55	0.15	12.40	7.07	3.46
23.00	61.57	13.32	0.34	13.84	0.14	12.62	7.14	3.37
24.00	60.03	10.43	0.15	10.67	0.13	13.05	7.03	3.33

Massimo	115.44	26.77	0.72	27.88	0.23	14.32	7.73	3.88
Minimo	51.90	1.95	0.02	2.11	0.08	5.58	3.40	3.23
Media	83.48	7.13	0.24	7.50	0.14	9.94	5.78	3.57
Dev. St.	18.42	6.13	0.14	6.29	0.04	3.10	1.32	0.19

ANDAMENTO INQUINANTI AERODISPERSI ~ 23 ago 2015								
Ora	O ₃	NO ₂	NO	NO _x	CO	PM ₁₀	PM _{2.5}	SO ₂
	media oraria	media oraria	media oraria	media oraria	media oraria	media oraria	media oraria	media oraria
	µg/m ³	µg/m ³	µg/m ³	µg/m ³	mg/m ³	µg/m ³	µg/m ³	µg/m ³
1.00	56.09	10.95	0.32	11.45	0.12	26.19	14.14	3.41
2.00	46.87	15.83	0.31	16.31	0.13	21.00	11.03	3.32
3.00	48.60	11.94	0.12	12.12	0.11	20.14	10.50	3.29
4.00	36.82	16.77	0.13	16.97	0.10	28.43	14.41	3.17
5.00	37.31	18.82	0.19	19.11	0.11	29.74	14.67	3.20
6.00	36.82	15.51	0.09	15.66	0.10	27.57	13.84	3.23
7.00	35.10	20.70	0.12	20.89	0.15	17.51	9.66	3.13
8.00	71.06	8.61	0.23	8.97	0.15	11.43	7.21	3.44
9.00	82.64	12.90	0.20	13.21	0.18	12.59	7.75	3.60
10.00	89.72	11.35	0.12	11.54	0.14	14.80	8.28	3.71
11.00	99.40	4.63	0.23	4.98	0.12	11.67	7.01	3.79
12.00	99.11	3.89	0.32	4.38	0.15	11.38	6.57	3.79
13.00	102.98	<<	<<	<<	0.11	10.44	6.23	3.78
14.00	102.99	2.69	0.23	3.04	0.10	9.84	5.77	3.79
15.00	107.46	4.48	0.10	4.63	0.11	9.58	6.12	3.83
16.00	108.47	2.57	0.40	3.18	0.12	9.64	5.94	3.86
17.00	106.44	2.53	0.10	2.68	0.13	8.40	5.12	3.83
18.00	106.81	4.03	0.17	4.30	0.15	9.85	6.61	3.81
19.00	97.54	7.44	0.39	8.04	0.14	12.23	7.06	3.78
20.00	80.78	15.85	0.29	16.29	0.17	12.69	7.06	3.62
21.00	79.99	11.92	0.16	12.16	0.10	11.90	7.06	3.55
22.00	69.76	5.99	0.16	6.24	0.13	15.22	8.80	3.47
23.00	86.87	4.48	0.13	4.67	0.09	8.11	4.41	3.56
24.00	91.25	3.22	0.26	3.62	0.08	8.64	5.25	3.56

Massimo	108.47	20.70	0.40	20.89	0.18	29.74	14.67	3.86
Minimo	35.10	2.53	0.09	2.68	0.08	8.11	4.41	3.13
Media	78.37	9.44	0.21	9.76	0.12	14.96	8.35	3.56
Dev. St.	26.13	5.82	0.09	5.80	0.03	6.85	3.14	0.24

AUTOSTRADA SALERNO-REGGIO CALABRIA *Scheda di Monitoraggio Matrice Atmosferica*

ANDAMENTO INQUINANTI AERODISPERSI ~ 24 ago 2015								
Ora	O ₃	NO ₂	NO	NO _x	CO	PM ₁₀	PM _{2.5}	SO ₂
	media oraria	media oraria	media oraria	media oraria	media oraria	media oraria	media oraria	media oraria
	µg/m ³	µg/m ³	µg/m ³	µg/m ³	mg/m ³	µg/m ³	µg/m ³	µg/m ³
1.00	100.58	1.93	0.05	2.01	0.08	6.54	4.36	3.66
2.00	98.44	1.45	0.26	1.85	0.10	7.76	4.98	3.61
3.00	89.24	1.54	0.23	1.89	0.08	8.65	5.21	3.57
4.00	101.32	0.70	0.24	1.07	0.08	10.90	6.14	3.69
5.00	86.80	0.09	0.09	0.24	0.06	11.30	6.23	3.57
6.00	101.29	0.01	0.08	0.14	0.08	11.70	6.18	3.72
7.00	90.85	2.00	0.08	2.13	0.07	10.15	5.75	3.61
8.00	88.62	3.52	0.26	3.92	0.11	10.21	6.26	3.61
9.00	87.76	15.15	0.26	15.55	0.18	16.40	8.24	3.66
10.00	90.75	18.97	0.35	19.51	0.18	16.18	7.80	3.74
11.00	97.71	7.60	0.17	7.87	0.11	12.17	6.75	3.72
12.00	99.74	<<	<<	<<	0.10	10.74	7.18	3.77
13.00	94.48	10.67	0.10	10.83	0.09	10.03	6.06	3.71
14.00	100.20	3.61	0.17	3.87	0.11	12.29	6.21	3.78
15.00	111.47	6.71	0.06	6.81	0.12	14.65	7.70	3.88
16.00	129.01	4.67	0.05	4.74	0.14	18.45	9.91	4.05
17.00	105.94	13.83	0.28	14.27	0.19	23.69	13.83	3.92
18.00	90.35	7.20	0.26	7.59	0.14	15.65	9.06	3.73
19.00	85.71	10.77	0.24	11.14	0.10	12.56	6.64	3.67
20.00	74.54	9.89	0.32	10.38	0.15	13.92	6.92	3.55
21.00	87.33	10.52	0.53	11.34	0.14	12.42	7.38	3.64
22.00	82.81	7.59	0.38	8.17	0.14	14.74	6.96	3.60
23.00	84.64	11.43	0.52	12.22	0.14	12.81	7.01	3.60
24.00	95.55	6.41	0.26	6.81	0.12	13.24	7.08	3.72

Massimo	129.01	18.97	0.53	19.51	0.19	23.69	13.83	4.05
Minimo	74.54	0.01	0.05	0.14	0.06	6.54	4.36	3.55
Media	94.80	6.79	0.23	7.15	0.12	12.80	7.08	3.70
Dev. St.	11.03	5.23	0.14	5.34	0.04	3.65	1.89	0.12

ANDAMENTO INQUINANTI AERODISPERSI ~ 25 ago 2015								
Ora	O ₃	NO ₂	NO	NO _x	CO	PM ₁₀	PM _{2.5}	SO ₂
	media oraria	media oraria	media oraria	media oraria	media oraria	media oraria	media oraria	media oraria
	µg/m ³	µg/m ³	µg/m ³	µg/m ³	mg/m ³	µg/m ³	µg/m ³	µg/m ³
1.00	97.11	4.50	0.24	4.87	0.11	12.72	8.76	3.70
2.00	79.66	4.12	0.17	4.38	0.14	15.27	10.01	3.57
3.00	85.43	3.09	0.28	3.51	0.09	14.26	9.54	3.60
4.00	87.80	5.20	0.19	5.50	0.09	14.35	9.30	3.64
5.00	104.83	3.87	0.25	4.25	0.11	12.93	9.03	3.77
6.00	97.37	4.30	0.35	4.84	0.14	13.22	8.62	3.75
7.00	90.47	8.13	0.25	8.51	0.19	32.61	20.82	3.75
8.00	89.66	11.40	0.26	11.79	0.19	12.12	9.19	3.69
9.00	<<	<<	<<	<<	<<	<<	<<	<<
10.00	<<	<<	<<	<<	<<	<<	<<	<<
11.00	<<	<<	<<	<<	<<	<<	<<	<<
12.00	<<	<<	<<	<<	<<	<<	<<	<<
13.00	<<	<<	<<	<<	<<	<<	<<	<<
14.00	<<	<<	<<	<<	<<	<<	<<	<<
15.00	<<	<<	<<	<<	<<	<<	<<	<<
16.00	<<	<<	<<	<<	<<	<<	<<	<<
17.00	<<	<<	<<	<<	<<	<<	<<	<<
18.00	<<	<<	<<	<<	<<	<<	<<	<<
19.00	<<	<<	<<	<<	<<	<<	<<	<<
20.00	<<	<<	<<	<<	<<	<<	<<	<<
21.00	<<	<<	<<	<<	<<	<<	<<	<<
22.00	<<	<<	<<	<<	<<	<<	<<	<<
23.00	<<	<<	<<	<<	<<	<<	<<	<<
24.00	<<	<<	<<	<<	<<	<<	<<	<<

Massimo	104.83	11.40	0.35	11.79	0.19	32.61	20.82	3.77
Minimo	79.66	3.09	0.17	3.51	0.09	12.12	8.62	3.57
Media	91.54	5.58	0.25	5.96	0.13	15.94	10.66	3.68
Dev. St.	7.92	2.79	0.05	2.79	0.04	6.82	4.13	0.08

AUTOSTRADA SALERNO-REGGIO CALABRIA Scheda di Monitoraggio Matrice Atmosfera

CONCENTRAZIONI MEDIE GIORNALIERE DI Idrocarburi Policiclici Aromatici (IPA) e Metalli (Pb, Cd, As, Ni, Hg)							
data	PTS ¹	IPA ²	Piombo ²	Cadmio ²	Arsenico ²	Nichel ²	Mercurio ²
	24h µg/m ³	24h ng/m ³	24h µg/m ³	24h ng/m ³	24h ng/m ³	24h ng/m ³	24h ng/m ³
11/08/2015	26.5	<LDR	0.003	<LDR	<LDR	<LDR	<LDR
12/08/2015	25.6	<LDR	<LDR	<LDR	<LDR	9.3	<LDR
13/08/2015	22.9	<LDR	0.002	<LDR	<LDR	3.2	<LDR
14/08/2015	33.6	<LDR	0.004	<LDR	<LDR	5.3	<LDR
15/08/2015	32.7	<LDR	<LDR	<LDR	<LDR	14.4	0.2
16/08/2015	30.3	<LDR	0.004	<LDR	<LDR	9.3	<LDR
17/08/2015	14.5	<LDR	0.001	<LDR	<LDR	2.8	<LDR
18/08/2015	15.6	<LDR	0.001	<LDR	<LDR	3.4	<LDR
19/08/2015	14.7	<LDR	<LDR	<LDR	<LDR	5.5	<LDR
20/08/2015	11.8	<LDR	0.001	<LDR	<LDR	3.2	<LDR
21/08/2015	12.0	<LDR	<LDR	<LDR	<LDR	4.3	<LDR
22/08/2015	11.6	<LDR	0.001	<LDR	<LDR	3.7	<LDR
23/08/2015	16.5	<LDR	0.002	<LDR	0.55	5.9	<LDR
24/08/2015	16.0	<LDR	0.002	<LDR	0.44	4.3	0.1

Di seguito, per ogni elemento investigato, il Limite di Rilevabilità (LDR)

	IPA	Pb	Cd	As	Ni	Hg
	ng/m ³	µg/m ³	ng/m ³	ng/m ³	ng/m ³	ng/m ³
LDR	0.1	0.001	0.2	0.2	0.2	0.2

CONCENTRAZIONI MEDIESETTIMANALI DI BTEX ³				
Settimana	BENZENE ² µg/m ³	TOLUENE µg/m ³	ETILBENZENE µg/m ³	XILENI µg/m ³
17 --24 AGOSTO 2015	0.3	1.0	0.2	1.0
24 --31 AGOSTO 2015	0.4	1.2	0.2	1.1

¹ La concentrazione di Polveri Totali Sospese (PTS) è stata regolamentata dal DPR 203/88 e DM 25/11/1994, abrogati dal DM 60/02. La soglia di attenzione era posta in 150 µg/m³.

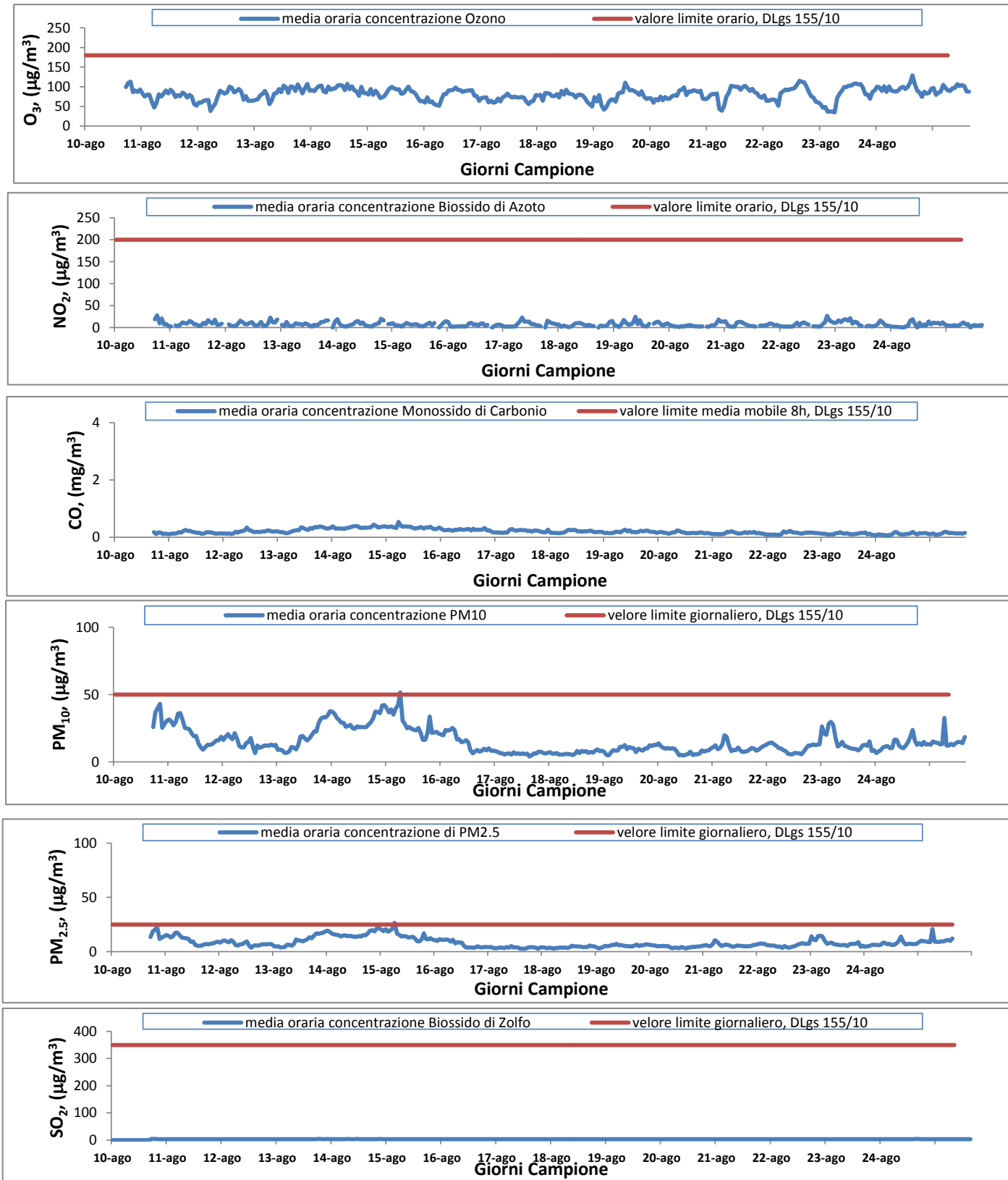
² Le concentrazioni di Benzo(a)Pirene (Idrocarburo Policiclico Aromatico(IPA)), Piombo (Pb), Nichel (Ni), Arsenico (As), Benzene (C6H6), Cadmio (Cd), Mercurio (Hg), nelle polveri aerodisperse sono attualmente normate dal DLgs 155/10.

Di seguito i valori limite

- Benzo(a)Pirene (1 ng/m³);
- Pb (0.5 µg/m³);
- Cd (5 ng/m³);
- As (6 ng/m³);
- Ni (20 ng/m³);
- Benzene (5 µg/m³).

³ BTEX (Benzene, Toluene, Etilbenzene e Xilene) determinati attraverso campionamento passivo mediante l'utilizzo di Campionatore a Diffusione (RADIELLO)

AUTOSTRADA SALERNO-REGGIO CALABRIA Scheda di Monitoraggio Matrice Atmosfera



Normativa di Riferimento¹

Inquinante	Normativa	Valore limite orario ²	Valore limite (media 8h) ³	Valore limite 24h ⁴	Valore limite annuale ⁵	Soglia di allarme
Ozono (O ₃)	DLgs 155/10	180 $\mu\text{g}/\text{m}^3$	120 $\mu\text{g}/\text{m}^3$ da non superare più di 25 volte per anno civile	—	—	240 $\mu\text{g}/\text{m}^3$
Biossido di Azoto (NO ₂)	DLgs 155/10	200 $\mu\text{g}/\text{m}^3$ da non superare più di 18 volte per anno civile	—	—	40 $\mu\text{g}/\text{m}^3$	400 $\mu\text{g}/\text{m}^3$
Monossido di Carbonio (CO)	DLgs 155/10	—	10 mg/m^3	—	—	—
Polveri Sottili con AD < 10 μm (PM ₁₀)	DLgs 155/10	—	—	50 $\mu\text{g}/\text{m}^3$ da non superare più di 35 volte per anno civile	40 $\mu\text{g}/\text{m}^3$	—
Polveri Sottili con AD < 2,5 μm (PM _{2,5})	DLgs 155/10	—	—	—	25 $\mu\text{g}/\text{m}^3$	—
Biossido di Zolfo (SO ₂)	DLgs 155/10	350 $\mu\text{g}/\text{m}^3$ da non superare più di 24 volte per anno civile	—	125 $\mu\text{g}/\text{m}^3$ da non superare più di 3 volte per anno civile	—	500 $\mu\text{g}/\text{m}^3$

¹ Normativa vigente alla data di emissione del certificato

² Valore limite per la protezione della salute umana da calcolare su un periodo di mediazione di 1 ora.

³ Valore limite da calcolare sulla media mobile trascinata di 8 ore.

⁴ Valore limite giornaliero per la protezione della salute umana da calcolare su un periodo di 24 ore consecutive.

⁵ Valore limite annuale per la protezione della salute umana- anno civile

AUTOSTRADA SALERNO-REGGIO CALABRIA *Scheda di Monitoraggio Matrice Atmosfera*

ANDAMENTO VARIABILE VENTO 10 ago 2015		
Ora	Velocità	Direzion
	m/s	Gradi
1.00	<<	<<
2.00	<<	<<
3.00	<<	<<
4.00	<<	<<
5.00	<<	<<
6.00	<<	<<
7.00	<<	<<
8.00	<<	<<
9.00	<<	<<
10.00	<<	<<
11.00	<<	<<
12.00	<<	<<
13.00	<<	<<
14.00	<<	<<
15.00	<<	<<
16.00	<<	<<
17.00	<<	<<
18.00	4.87	180.35
19.00	5.64	181.90
20.00	2.46	178.45
21.00	0.01	CALMA
22.00	0.24	<<
23.00	0.36	68.18
24.00	0.58	65.61

ANDAMENTO VARIABILE VENTO 11 ago 2015		
Ora	Velocità	Direzione
	m/s	Gradi
1.00	0.53	66.80
2.00	0.44	44.78
3.00	0.06	<<
4.00	0.00	CALMA
5.00	0.00	CALMA
6.00	0.00	CALMA
7.00	0.01	CALMA
8.00	0.56	161.77
9.00	0.56	66.73
10.00	1.68	44.09
11.00	2.23	67.07
12.00	1.83	66.87
13.00	1.22	67.61
14.00	0.88	66.07
15.00	0.09	CALMA
16.00	0.81	65.03
17.00	0.55	44.85
18.00	0.56	44.53
19.00	0.27	66.45
20.00	0.57	67.93
21.00	0.09	CALMA
22.00	0.07	CALMA
23.00	0.00	CALMA
24.00	0.00	CALMA

ANDAMENTO VARIABILE VENTO 12-ago-15		
Ora	Velocità	Direzione
	m/s	Gradi
1.00	0.07	CALMA
2.00	0.00	CALMA
3.00	0.04	CALMA
4.00	0.03	CALMA
5.00	0.00	CALMA
6.00	0.00	CALMA
7.00	0.00	CALMA
8.00	0.18	<<
9.00	0.72	69.59
10.00	1.54	20.77
11.00	0.93	20.50
12.00	0.47	337.47
13.00	0.49	89.63
14.00	0.68	66.08
15.00	0.40	70.26
16.00	0.56	67.01
17.00	0.70	66.62
18.00	0.11	<<
19.00	0.04	CALMA
20.00	0.03	CALMA
21.00	0.01	CALMA
22.00	0.00	CALMA
23.00	0.05	CALMA
24.00	0.04	CALMA

ANDAMENTO VARIABILE VENTO 13-ago-15		
Ora	Velocità	Direzione
	m/s	Gradi
1.00	0.16	<<
2.00	0.08	CALMA
3.00	0.22	<<
4.00	0.21	<<
5.00	0.07	CALMA
6.00	0.03	CALMA
7.00	0.02	CALMA
8.00	0.23	<<
9.00	0.39	18.91
10.00	0.19	<<
11.00	0.50	0.76
12.00	0.87	24.86
13.00	2.31	44.77
14.00	1.89	66.42
15.00	0.80	19.98
16.00	0.59	358.86
17.00	0.30	359.38
18.00	0.38	358.17
19.00	0.03	CALMA
20.00	0.00	CALMA
21.00	0.00	CALMA
22.00	0.05	CALMA
23.00	0.00	CALMA
24.00	0.00	CALMA

AUTOSTRADA SALERNO-REGGIO CALABRIA *Scheda di Monitoraggio Matrice Atmosfera*

ANDAMENTO VARIABILE VENTO 14-ago-15		
Ora	Velocità	Direzione
	m/s	Gradi
1.00	0.00	CALMA
2.00	0.04	CALMA
3.00	0.04	CALMA
4.00	0.07	CALMA
5.00	0.11	<<
6.00	0.00	CALMA
7.00	0.16	<<
8.00	0.21	<<
9.00	0.37	45.33
10.00	1.31	65.02
11.00	2.06	22.87
12.00	2.05	22.52
13.00	2.71	66.43
14.00	2.79	66.40
15.00	1.92	66.66
16.00	2.08	67.03
17.00	1.27	64.94
18.00	0.23	<<
19.00	0.00	CALMA
20.00	0.01	CALMA
21.00	0.01	CALMA
22.00	0.03	CALMA
23.00	0.00	CALMA
24.00	0.01	CALMA

ANDAMENTO VARIABILE VENTO 15-ago-15		
Ora	Velocità	Direzione
	m/s	Gradi
1.00	0.00	CALMA
2.00	0.03	CALMA
3.00	0.00	CALMA
4.00	0.00	CALMA
5.00	0.00	CALMA
6.00	0.00	CALMA
7.00	0.16	<<
8.00	0.33	20.29
9.00	0.38	24.57
10.00	1.34	24.76
11.00	1.49	20.80
12.00	1.80	23.17
13.00	2.48	43.66
14.00	1.91	44.78
15.00	0.34	23.87
16.00	0.46	24.12
17.00	1.35	64.70
18.00	0.86	44.63
19.00	0.00	CALMA
20.00	0.08	CALMA
21.00	0.20	<<
22.00	0.00	CALMA
23.00	0.00	CALMA
24.00	0.00	CALMA

ANDAMENTO VARIABILE VENTO 16-ago-15		
Ora	Velocità	Direzione
	m/s	Gradi
1.00	0.42	87.61
2.00	0.00	CALMA
3.00	0.00	CALMA
4.00	0.02	CALMA
5.00	0.00	CALMA
6.00	0.04	CALMA
7.00	0.00	CALMA
8.00	0.33	135.99
9.00	1.62	204.90
10.00	4.10	181.91
11.00	7.95	179.56
12.00	10.35	182.10
13.00	8.02	181.68
14.00	5.22	179.78
15.00	0.57	340.37
16.00	0.80	23.37
17.00	0.22	<<
18.00	0.28	22.92
19.00	0.17	<<
20.00	0.12	<<
21.00	0.04	CALMA
22.00	0.28	66.96
23.00	0.07	CALMA
24.00	0.07	CALMA

ANDAMENTO VARIABILE VENTO 17-ago-15		
Ora	Velocità	Direzione
	m/s	Gradi
1.00	0.00	CALMA
2.00	0.02	CALMA
3.00	0.00	CALMA
4.00	2.04	114.25
5.00	0.23	<<
6.00	0.68	43.22
7.00	0.05	CALMA
8.00	0.01	CALMA
9.00	0.27	269.36
10.00	0.24	<<
11.00	0.34	337.33
12.00	1.23	337.09
13.00	0.47	18.54
14.00	1.20	335.50
15.00	1.72	20.53
16.00	1.25	359.88
17.00	1.10	65.77
18.00	0.80	43.23
19.00	0.05	CALMA
20.00	0.03	CALMA
21.00	0.00	CALMA
22.00	0.08	CALMA
23.00	0.05	CALMA
24.00	0.17	<<

AUTOSTRADA SALERNO-REGGIO CALABRIA
Scheda di Monitoraggio Matrice Atmosfera

ANDAMENTO VARIABILE VENTO 18-ago-15		
Ora	Velocità	Direzione
	m/s	Gradi
1.00	0.04	CALMA
2.00	0.08	CALMA
3.00	0.00	CALMA
4.00	0.04	CALMA
5.00	0.02	CALMA
6.00	0.01	CALMA
7.00	0.01	CALMA
8.00	0.13	<<
9.00	0.22	<<
10.00	0.42	2.46
11.00	0.93	21.40
12.00	1.04	21.55
13.00	2.71	22.13
14.00	2.55	22.16
15.00	2.73	66.01
16.00	2.19	45.47
17.00	1.77	44.73
18.00	1.03	45.58
19.00	0.71	66.19
20.00	0.75	88.33
21.00	0.11	<<
22.00	0.01	CALMA
23.00	0.06	CALMA
24.00	0.14	<<

ANDAMENTO VARIABILE VENTO 19-ago-15		
Ora	Velocità	Direzione
	m/s	Gradi
1.00	1.08	125.53
2.00	4.71	156.11
3.00	2.06	153.03
4.00	0.20	<<
5.00	0.00	CALMA
6.00	0.01	CALMA
7.00	1.87	154.51
8.00	6.00	181.91
9.00	3.41	183.38
10.00	1.49	177.56
11.00	0.94	182.03
12.00	1.73	44.77
13.00	2.33	66.02
14.00	2.46	68.21
15.00	1.66	66.47
16.00	1.41	65.16
17.00	1.03	21.03
18.00	1.45	68.39
19.00	0.10	<<
20.00	0.02	CALMA
21.00	0.00	CALMA
22.00	0.18	0.00
23.00	0.07	CALMA
24.00	0.05	CALMA

ANDAMENTO VARIABILE VENTO 20-ago-15		
Ora	Velocità	Direzione
	m/s	Gradi
1.00	0.02	CALMA
2.00	0.10	<<
3.00	0.01	CALMA
4.00	0.05	CALMA
5.00	0.07	CALMA
6.00	0.02	CALMA
7.00	0.06	CALMA
8.00	0.10	<<
9.00	0.64	18.89
10.00	1.24	22.09
11.00	1.70	43.67
12.00	1.61	44.90
13.00	2.32	67.10
14.00	2.48	43.73
15.00	2.71	44.52
16.00	2.08	66.29
17.00	1.29	43.51
18.00	1.28	45.03
19.00	0.38	66.56
20.00	0.23	<<
21.00	0.04	CALMA
22.00	0.18	<<
23.00	0.02	CALMA
24.00	0.00	CALMA

ANDAMENTO VARIABILE VENTO 21-ago-15		
Ora	Velocità	Direzione
	m/s	Gradi
1.00	0.00	CALMA
2.00	0.42	108.02
3.00	0.01	CALMA
4.00	0.01	CALMA
5.00	0.06	CALMA
6.00	0.00	CALMA
7.00	0.00	CALMA
8.00	0.01	CALMA
9.00	0.12	<<
10.00	0.19	<<
11.00	0.97	68.74
12.00	1.54	67.38
13.00	1.73	21.77
14.00	1.80	45.72
15.00	2.03	22.31
16.00	1.87	44.60
17.00	1.16	21.06
18.00	0.36	24.29
19.00	0.03	CALMA
20.00	0.04	CALMA
21.00	0.07	CALMA
22.00	0.34	111.89
23.00	0.05	CALMA
24.00	0.05	CALMA

AUTOSTRADA SALERNO-REGGIO CALABRIA *Scheda di Monitoraggio Matrice Atmosfera*

ANDAMENTO VARIABILE VENTO 22-ago-15		
Ora	Velocità	Direzione
	m/s	Gradi
1.00	0.01	CALMA
2.00	0.00	CALMA
3.00	0.24	CALMA
4.00	0.00	CALMA
5.00	0.00	CALMA
6.00	0.00	CALMA
7.00	0.00	CALMA
8.00	0.03	CALMA
9.00	0.11	<<
10.00	0.16	<<
11.00	0.54	338.51
12.00	0.69	1.34
13.00	1.50	22.20
14.00	1.99	22.04
15.00	2.05	44.94
16.00	1.66	66.43
17.00	1.38	64.81
18.00	0.34	61.70
19.00	0.05	CALMA
20.00	0.01	CALMA
21.00	0.00	CALMA
22.00	0.00	CALMA
23.00	0.00	CALMA
24.00	0.00	CALMA

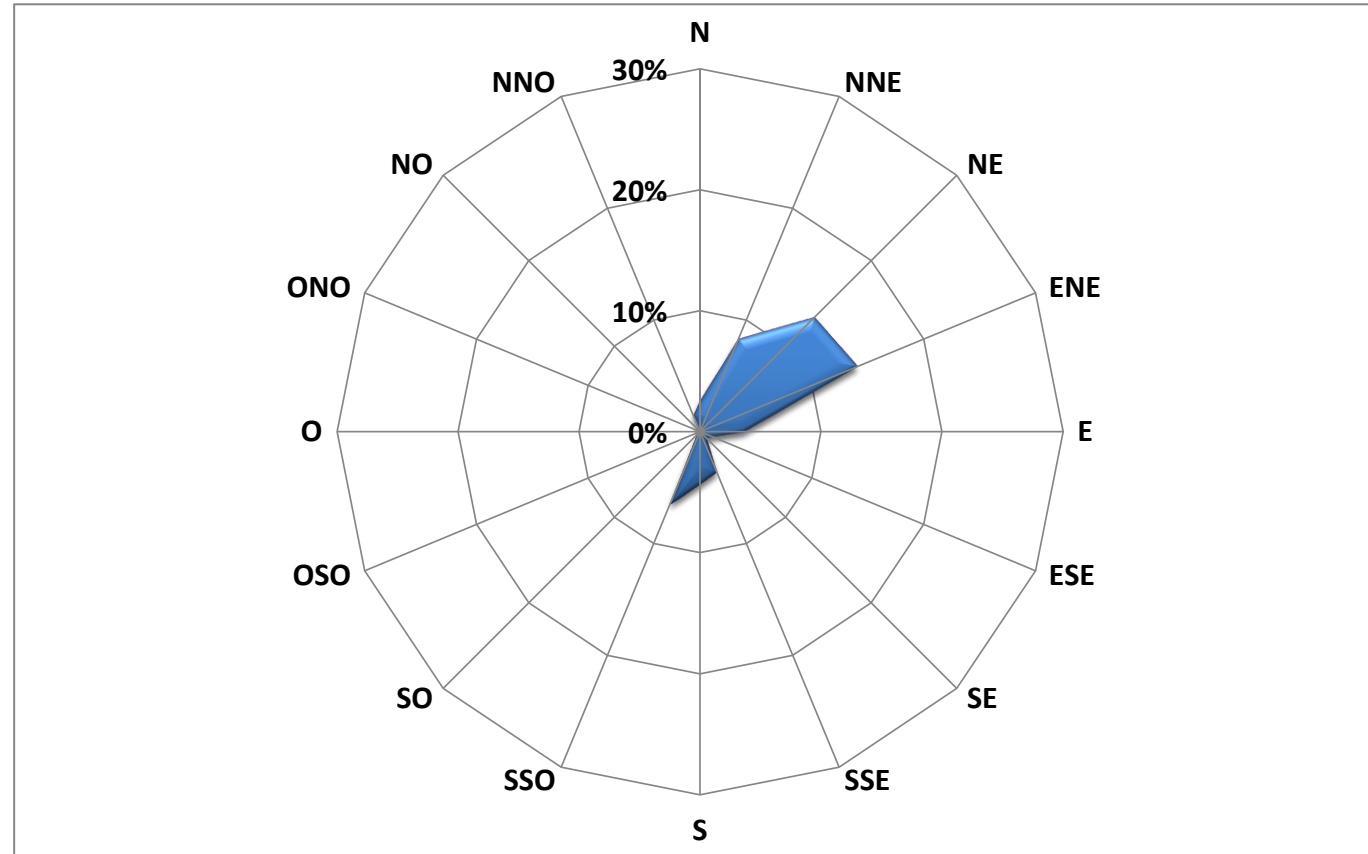
ANDAMENTO VARIABILE VENTO 23-ago-15		
Ora	Velocità	Direzione
	m/s	Gradi
1.00	0.00	CALMA
2.00	0.00	CALMA
3.00	0.00	CALMA
4.00	0.00	CALMA
5.00	0.00	CALMA
6.00	0.00	CALMA
7.00	0.00	CALMA
8.00	0.01	CALMA
9.00	0.44	358.29
10.00	1.90	23.27
11.00	2.38	66.00
12.00	2.31	43.64
13.00	1.95	65.72
14.00	2.28	44.44
15.00	1.83	23.27
16.00	0.62	40.35
17.00	0.69	44.80
18.00	0.36	44.47
19.00	0.04	CALMA
20.00	0.02	CALMA
21.00	0.00	CALMA
22.00	2.23	104.63
23.00	5.83	156.81
24.00	5.55	156.41

ANDAMENTO VARIABILE VENTO 24-ago-15		
Ora	Velocità	Direzione
	m/s	Gradi
1.00	5.26	158.65
2.00	4.62	152.69
3.00	1.77	154.44
4.00	5.83	139.98
5.00	3.29	144.83
6.00	3.97	175.52
7.00	5.33	178.44
8.00	8.17	186.15
9.00	6.46	182.17
10.00	5.98	180.43
11.00	8.06	180.58
12.00	6.49	178.67
13.00	7.96	178.96
14.00	7.86	179.04
15.00	7.00	178.73
16.00	6.87	178.28
17.00	9.69	180.87
18.00	9.69	181.39
19.00	8.48	183.38
20.00	8.07	184.43
21.00	8.55	196.83
22.00	8.36	198.40
23.00	7.23	185.68
24.00	4.31	193.96

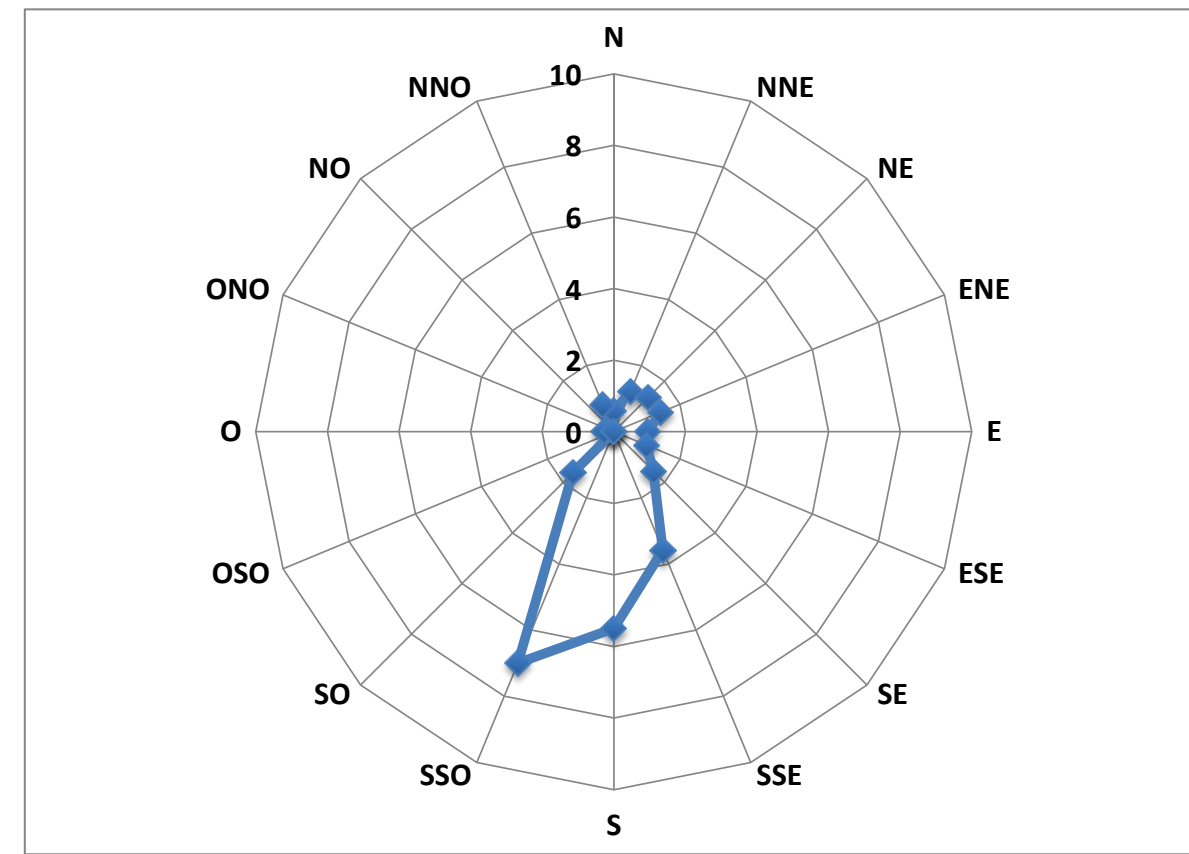
ANDAMENTO VARIABILE VENTO 25-ago-15		
Ora	Velocità	Direzione
	m/s	Gradi
1.00	2.55	187.35
2.00	1.55	173.47
3.00	0.17	CALMA
4.00	0.11	CALMA
5.00	0.09	CALMA
6.00	0.06	CALMA
7.00	0.47	87.75
8.00	0.16	CALMA
9.00	1.61	68.62
10.00	<<	<<
11.00	<<	<<
12.00	<<	<<
13.00	<<	<<
14.00	<<	<<
15.00	<<	<<
16.00	<<	<<
17.00	<<	<<
18.00	<<	<<
19.00	<<	<<
20.00	<<	<<
21.00	<<	<<
22.00	<<	<<
23.00	<<	<<
24.00	<<	<<

AUTOSTRADA SALERNO-REGGIO CALABRIA Scheda di Monitoraggio Matrice Atmosfera

Direzione percentuale dei venti relativa all'intero periodo di riferimento (%)



Velocità media relativa all'intero periodo di riferimento (m/s)



AUTOSTRADA SALERNO-REGGIO CALABRIA *Scheda di Monitoraggio Matrice Atmosfera*
ANDAMENTO PARAMETRI METEOROLOGICI
10 ago 2015

Ora	Temperatura	Pressione	Umidità Relativa	Radiazione Solare	Pioggia
	°C	mbar	%	W/m ²	mm
1.00	<<	<<	<<	<<	<<
2.00	<<	<<	<<	<<	<<
3.00	<<	<<	<<	<<	<<
4.00	<<	<<	<<	<<	<<
5.00	<<	<<	<<	<<	<<
6.00	<<	<<	<<	<<	<<
7.00	<<	<<	<<	<<	<<
8.00	<<	<<	<<	<<	<<
9.00	<<	<<	<<	<<	<<
10.00	<<	<<	<<	<<	<<
11.00	<<	<<	<<	<<	<<
12.00	<<	<<	<<	<<	<<
13.00	<<	<<	<<	<<	<<
14.00	<<	<<	<<	<<	<<
15.00	<<	<<	<<	<<	<<
16.00	<<	<<	<<	<<	<<
17.00	<<	<<	<<	<<	<<
18.00	28.96	998.37	67.02	152.95	0.00
19.00	27.65	998.51	71.40	15.06	0.00
20.00	27.42	998.53	69.71	0.00	0.00
21.00	27.52	999.44	68.17	0.00	0.00
22.00	26.36	999.67	73.11	0.00	0.00
23.00	25.50	999.39	77.42	0.00	0.00
24.00	25.38	999.11	78.86	0.00	0.00

ANDAMENTO PARAMETRI METEOROLOGICI
11 ago 2015

Ora	Temperatura	Pressione	Umidità Relativa	Radiazione Solare	Pioggia
	°C	mbar	%	W/m ²	mm
1.00	25.30	998.40	80.48	0.00	0.00
2.00	25.64	998.18	80.96	0.00	0.00
3.00	25.86	997.89	78.73	0.00	0.00
4.00	25.43	997.17	81.39	0.00	0.00
5.00	24.96	997.03	83.77	0.00	0.00
6.00	24.33	996.97	84.97	20.79	0.00
7.00	25.36	997.15	78.59	203.51	0.00
8.00	27.50	997.22	68.14	359.96	0.00
9.00	28.13	997.56	69.29	563.29	0.00
10.00	28.37	997.64	69.00	747.91	0.00
11.00	28.77	997.42	67.06	868.98	0.00
12.00	27.09	997.47	71.71	281.89	0.00
13.00	23.81	998.19	81.23	80.41	0.00
14.00	22.77	998.20	86.60	25.33	0.00
15.00	22.40	998.56	88.56	106.09	0.00
16.00	23.60	997.24	85.95	519.95	0.00
17.00	23.64	996.95	84.84	191.18	0.00
18.00	24.22	996.81	81.43	193.54	0.00
19.00	23.73	997.13	80.23	22.89	0.00
20.00	23.50	997.59	82.00	0.00	0.00
21.00	23.27	997.74	83.23	0.00	0.00
22.00	23.06	998.04	84.65	0.00	0.00
23.00	22.51	997.79	85.50	0.00	0.00
24.00	22.37	997.89	87.26	0.00	0.00

AUTOSTRADA SALERNO-REGGIO CALABRIA *Scheda di Monitoraggio Matrice Atmosfera*

ANDAMENTO PARAMETRI METEOROLOGICI					
12 ago 2015					
Ora	Temperatura	Pressione	Umidità Relativa	Radiazione Solare	Pioggia
	°C	mbar	%	W/m ²	mm
1.00	23.21	997.91	86.27	0.00	0.00
2.00	22.56	997.41	86.83	0.00	0.00
3.00	22.70	997.07	87.45	0.00	0.00
4.00	22.99	996.80	85.06	0.00	0.00
5.00	22.50	997.03	84.39	0.00	0.00
6.00	21.94	997.31	87.31	11.12	0.00
7.00	23.14	997.62	87.01	125.29	0.00
8.00	25.06	998.09	78.72	350.95	0.00
9.00	25.59	998.26	74.72	456.27	0.00
10.00	26.66	998.23	69.58	681.61	0.00
11.00	27.67	998.46	67.37	639.67	0.00
12.00	26.42	998.50	75.31	225.25	0.00
13.00	24.09	998.75	83.43	74.31	0.00
14.00	22.94	999.08	82.36	380.21	0.00
15.00	24.14	998.78	75.81	295.60	0.00
16.00	23.60	998.51	84.24	289.64	0.00
17.00	24.16	998.18	81.93	272.46	0.00
18.00	24.40	997.98	80.51	136.09	0.00
19.00	24.30	998.29	81.46	25.97	0.00
20.00	24.03	998.76	82.25	0.00	0.00
21.00	23.84	999.29	84.57	0.00	0.00
22.00	23.62	999.59	84.88	0.00	0.00
23.00	23.90	999.85	83.93	0.00	0.00
24.00	23.81	999.64	83.95	0.00	0.00

ANDAMENTO PARAMETRI METEOROLOGICI					
13 ago 2015					
Ora	Temperatura	Pressione	Umidità Relativa	Radiazione Solare	Pioggia
	°C	mbar	%	W/m ²	mm
1.00	23.87	999.30	81.55	0.00	0.00
2.00	23.77	999.03	80.66	0.00	0.00
3.00	23.72	998.64	79.32	0.00	0.00
4.00	23.46	998.41	75.07	0.00	0.00
5.00	23.84	998.26	74.16	0.00	0.00
6.00	24.06	998.46	77.03	7.93	0.00
7.00	24.26	998.69	82.07	50.26	0.00
8.00	24.70	998.97	81.02	82.50	0.00
9.00	25.59	999.02	77.69	158.68	0.00
10.00	26.06	999.14	74.66	106.08	0.00
11.00	26.56	999.06	72.78	84.93	0.00
12.00	27.68	999.29	71.72	516.11	0.00
13.00	28.78	999.07	69.25	903.40	0.00
14.00	28.95	998.77	68.94	875.69	0.00
15.00	29.49	998.79	65.37	412.71	0.00
16.00	29.71	998.70	64.41	454.40	0.00
17.00	29.71	998.67	63.73	306.34	0.00
18.00	28.74	998.80	67.63	163.09	0.00
19.00	27.73	998.82	69.30	28.73	0.00
20.00	26.60	999.03	74.96	0.00	0.00
21.00	26.38	999.46	76.86	0.00	0.00
22.00	26.42	999.54	75.77	0.00	0.00
23.00	26.15	999.49	77.03	0.00	0.00
24.00	25.69	999.38	80.03	0.00	0.00

AUTOSTRADA SALERNO-REGGIO CALABRIA *Scheda di Monitoraggio Matrice Atmosfera*

ANDAMENTO PARAMETRI METEOROLOGICI					
14 ago 2015					
Ora	Temperatura	Pressione	Umidità Relativa	Radiazione Solare	Pioggia
	°C	mbar	%	W/m ²	mm
1.00	25.62	999.05	80.29	0.00	0.00
2.00	25.44	998.76	80.69	0.00	0.00
3.00	25.32	998.53	80.65	0.00	0.00
4.00	25.39	998.28	78.98	0.00	0.00
5.00	25.38	998.44	78.69	0.00	0.00
6.00	25.16	998.60	80.11	13.18	0.00
7.00	26.09	998.62	77.85	140.62	0.00
8.00	27.06	998.83	75.89	268.36	0.00
9.00	27.59	998.94	74.95	356.08	0.00
10.00	28.29	998.98	72.98	623.82	0.00
11.00	29.15	999.05	70.05	811.21	0.00
12.00	29.77	998.98	67.51	881.21	0.00
13.00	29.54	998.65	69.34	881.49	0.00
14.00	29.33	998.59	70.59	824.26	0.00
15.00	29.57	998.09	69.74	688.76	0.00
16.00	29.06	997.87	70.08	555.10	0.00
17.00	28.81	997.45	68.72	363.93	0.00
18.00	28.27	997.26	69.11	149.84	0.00
19.00	27.43	997.24	74.56	27.46	0.00
20.00	26.68	997.67	80.19	0.00	0.00
21.00	26.48	998.37	80.47	0.00	0.00
22.00	26.62	998.55	81.56	0.00	0.00
23.00	26.49	998.41	82.23	0.00	0.00
24.00	26.26	998.34	82.83	0.00	0.00

ANDAMENTO PARAMETRI METEOROLOGICI					
15 ago 2015					
Ora	Temperatura	Pressione	Umidità Relativa	Radiazione Solare	Pioggia
	°C	mbar	%	W/m ²	mm
1.00	26.05	997.71	81.63	0.00	0.00
2.00	26.11	997.42	81.03	0.00	0.00
3.00	25.62	997.11	81.76	0.00	0.00
4.00	25.76	996.87	80.32	0.00	0.00
5.00	25.62	996.71	82.79	0.00	0.00
6.00	25.49	997.06	84.43	5.69	0.00
7.00	25.83	997.27	82.50	75.58	0.00
8.00	27.45	997.19	77.01	295.20	0.00
9.00	28.28	997.32	72.73	509.11	0.00
10.00	29.25	997.53	68.46	703.91	0.00
11.00	29.62	997.63	67.89	827.23	0.00
12.00	30.32	997.58	64.24	892.30	0.00
13.00	30.34	997.34	64.43	883.05	0.00
14.00	30.03	996.96	67.30	695.21	0.00
15.00	28.84	997.42	71.40	143.85	0.00
16.00	28.66	997.68	70.11	348.96	0.00
17.00	27.98	997.27	60.50	359.60	0.00
18.00	27.46	997.02	64.58	143.92	0.00
19.00	26.65	997.06	71.85	27.36	0.00
20.00	26.37	997.22	72.01	0.00	0.00
21.00	25.82	997.79	74.77	0.00	0.00
22.00	25.28	997.84	76.56	0.00	0.00
23.00	25.17	997.71	75.76	0.00	0.00
24.00	25.55	998.01	73.98	0.00	0.00

AUTOSTRADA SALERNO-REGGIO CALABRIA *Scheda di Monitoraggio Matrice Atmosfera*

ANDAMENTO PARAMETRI METEOROLOGICI					
16 ago 2015					
Ora	Temperatura	Pressione	Umidità Relativa	Radiazione Solare	Pioggia
	°C	mbar	%	W/m ²	mm
1.00	25.02	998.04	75.57	0.00	0.00
2.00	25.02	997.67	76.39	0.00	0.00
3.00	24.20	997.41	82.27	0.00	0.00
4.00	24.52	997.37	82.59	0.00	0.00
5.00	24.49	997.27	82.26	0.00	0.00
6.00	24.28	997.06	84.96	26.41	0.00
7.00	25.18	997.01	83.16	110.38	0.00
8.00	26.57	996.71	75.29	258.74	0.00
9.00	27.88	996.98	65.76	395.61	0.00
10.00	28.82	997.28	56.99	428.07	0.00
11.00	28.29	997.80	61.31	325.43	0.00
12.00	27.54	997.57	63.31	202.08	0.00
13.00	27.87	997.69	60.20	340.99	0.00
14.00	29.91	997.49	47.35	740.03	0.00
15.00	30.93	997.63	41.66	448.49	0.00
16.00	28.45	997.69	62.46	247.85	0.00
17.00	27.33	997.60	68.36	172.46	0.00
18.00	26.72	997.77	67.83	119.76	0.00
19.00	25.85	997.75	69.08	28.40	0.00
20.00	25.36	998.24	70.59	0.00	0.00
21.00	24.94	998.74	72.37	0.00	0.00
22.00	23.94	999.19	80.01	0.00	0.00
23.00	22.94	999.06	81.63	0.00	0.00
24.00	22.66	999.13	83.24	0.00	0.00

ANDAMENTO PARAMETRI METEOROLOGICI					
17 ago 2015					
Ora	Temperatura	Pressione	Umidità Relativa	Radiazione Solare	Pioggia
	°C	mbar	%	W/m ²	mm
1.00	22.90	999.08	82.52	0.00	0.00
2.00	22.78	999.02	81.53	0.00	0.00
3.00	23.03	998.89	76.40	0.00	0.00
4.00	22.83	998.86	75.60	0.00	0.00
5.00	23.09	998.99	74.29	0.00	0.00
6.00	22.85	999.02	75.36	12.45	0.00
7.00	24.41	998.95	70.45	195.89	0.00
8.00	25.62	999.02	67.33	323.44	0.00
9.00	25.71	999.53	67.05	182.15	0.00
10.00	26.40	999.91	62.97	480.37	0.00
11.00	27.81	999.99	57.44	725.03	0.00
12.00	28.51	999.81	54.34	601.49	0.00
13.00	28.55	999.59	57.22	366.18	0.00
14.00	28.36	999.54	56.23	518.28	0.00
15.00	29.07	999.18	53.74	719.94	0.00
16.00	28.61	999.11	55.88	577.87	0.00
17.00	26.95	999.05	64.93	252.67	0.00
18.00	26.40	998.87	66.25	150.18	0.00
19.00	25.76	998.75	67.31	25.34	0.00
20.00	24.94	999.03	70.47	0.00	0.00
21.00	24.49	999.56	72.16	0.00	0.00
22.00	24.48	999.84	72.28	0.00	0.00
23.00	24.56	999.83	71.58	0.00	0.00
24.00	24.86	999.69	70.32	0.00	0.00

AUTOSTRADA SALERNO-REGGIO CALABRIA *Scheda di Monitoraggio Matrice Atmosfera*

ANDAMENTO PARAMETRI METEOROLOGICI					
18 ago 2015					
Ora	Temperatura	Pressione	Umidità Relativa	Radiazione Solare	Pioggia
	°C	mbar	%	W/m ²	mm
1.00	24.69	999.53	69.90	0.00	0.00
2.00	24.19	999.50	69.18	0.00	0.00
3.00	23.67	999.35	70.05	0.00	0.00
4.00	23.67	999.23	70.31	0.00	0.00
5.00	23.81	999.34	68.60	0.00	0.00
6.00	23.63	999.69	67.88	9.14	0.00
7.00	23.70	999.89	67.40	46.77	0.00
8.00	25.31	1000.19	62.16	325.63	0.00
9.00	26.80	1000.32	58.33	449.42	0.00
10.00	27.16	1000.80	58.59	616.84	0.00
11.00	27.99	1001.01	56.18	863.05	0.00
12.00	28.14	1001.26	56.03	821.46	0.00
13.00	28.03	1001.20	55.77	923.69	0.00
14.00	28.14	1001.18	56.19	858.28	0.00
15.00	27.84	1001.03	56.74	722.87	0.00
16.00	27.55	1000.93	59.18	592.79	0.00
17.00	27.10	1000.72	61.23	402.90	0.00
18.00	26.41	1000.59	63.76	160.45	0.00
19.00	25.54	1000.40	66.95	12.99	0.00
20.00	24.83	1000.21	70.89	0.00	0.00
21.00	24.52	1000.88	72.93	0.00	0.00
22.00	24.25	1001.44	72.77	0.00	0.00
23.00	24.06	1001.27	74.76	0.00	0.00
24.00	23.94	1000.61	75.47	0.00	0.00

ANDAMENTO PARAMETRI METEOROLOGICI					
19 ago 2015					
Ora	Temperatura	Pressione	Umidità Relativa	Radiazione Solare	Pioggia
	°C	mbar	%	W/m ²	mm
1.00	23.46	999.75	68.60	0.00	0.00
2.00	23.39	999.38	59.36	0.00	0.00
3.00	24.51	999.01	56.48	0.00	0.00
4.00	24.11	999.09	67.21	0.00	0.00
5.00	23.68	999.67	73.13	0.00	0.00
6.00	23.32	999.75	74.52	13.34	0.00
7.00	23.92	1000.00	63.35	118.11	0.00
8.00	25.16	1000.12	62.35	278.90	0.00
9.00	26.63	999.95	65.74	407.88	0.00
10.00	27.19	1000.05	65.34	535.11	0.00
11.00	29.12	1000.22	59.29	810.27	0.00
12.00	28.91	999.95	61.95	888.89	0.00
13.00	28.79	1000.01	61.82	892.00	0.00
14.00	29.45	1000.08	53.85	884.71	0.00
15.00	29.82	1000.08	51.31	662.28	0.00
16.00	28.75	1000.11	55.49	313.06	0.00
17.00	28.87	1000.06	54.45	386.83	0.00
18.00	27.99	1000.11	57.54	144.94	0.00
19.00	27.14	1000.46	61.16	13.03	0.00
20.00	26.70	1001.01	65.66	0.00	0.00
21.00	26.59	1001.29	70.78	0.00	0.00
22.00	26.14	1001.36	73.99	0.00	0.00
23.00	26.00	1001.66	74.21	0.00	0.00
24.00	26.25	1001.91	71.51	0.00	0.00

AUTOSTRADA SALERNO-REGGIO CALABRIA*Scheda di Monitoraggio Matrice Atmosfera***ANDAMENTO PARAMETRI METEOROLOGICI****20 ago 2015**

Ora	Temperatura	Pressione	Umidità Relativa	Radiazione Solare	Pioggia
	°C	mbar	%	W/m ²	mm
1.00	25.86	1001.87	73.04	0.00	0.00
2.00	24.97	1001.55	75.33	0.00	0.00
3.00	25.48	1001.63	75.85	0.00	0.00
4.00	25.00	1001.74	78.04	0.00	0.00
5.00	24.97	1001.87	79.04	0.00	0.00
6.00	24.83	1002.43	77.80	4.84	0.00
7.00	25.04	1003.06	77.02	40.16	0.00
8.00	25.60	1003.35	74.74	148.23	0.00
9.00	27.08	1003.55	68.45	477.22	0.00
10.00	27.28	1003.79	64.54	750.62	0.00
11.00	27.51	1004.01	63.89	904.08	0.00
12.00	27.99	1004.39	63.00	965.04	0.00
13.00	28.17	1004.41	63.50	956.84	0.00
14.00	27.91	1004.46	62.02	870.84	0.00
15.00	27.95	1004.31	61.53	731.17	0.00
16.00	27.53	1004.07	63.27	589.20	0.00
17.00	27.22	1003.99	60.58	397.17	0.00
18.00	26.27	1003.74	62.64	132.90	0.00
19.00	25.65	1003.94	63.04	12.68	0.00
20.00	25.03	1004.42	66.25	0.00	0.00
21.00	24.77	1004.87	67.75	0.00	0.00
22.00	24.31	1004.99	70.19	0.00	0.00
23.00	24.08	1004.92	71.14	0.00	0.00
24.00	23.42	1004.90	73.11	0.00	0.00

ANDAMENTO PARAMETRI METEOROLOGICI**21 ago 2015**

Ora	Temperatura	Pressione	Umidità Relativa	Radiazione Solare	Pioggia
	°C	mbar	%	W/m ²	mm
1.00	23.53	1004.59	73.69	0.00	0.00
2.00	23.35	1004.35	78.49	0.00	0.00
3.00	23.56	1004.13	76.00	0.00	0.00
4.00	23.82	1003.90	75.25	0.00	0.00
5.00	23.63	1003.87	77.76	0.00	0.00
6.00	22.68	1004.06	83.97	10.50	0.00
7.00	22.77	1004.42	87.56	75.85	0.00
8.00	23.79	1004.67	83.47	210.74	0.00
9.00	25.60	1004.91	71.96	367.75	0.00
10.00	26.43	1005.15	67.49	668.02	0.00
11.00	27.00	1005.11	64.11	807.15	0.00
12.00	26.90	1004.86	64.26	696.59	0.00
13.00	27.71	1004.56	61.50	942.26	0.00
14.00	27.92	1004.48	61.28	875.72	0.00
15.00	28.13	1004.31	60.33	748.10	0.00
16.00	27.86	1004.10	60.53	551.87	0.00
17.00	27.37	1003.84	62.43	367.99	0.00
18.00	26.46	1003.78	64.96	103.13	0.00
19.00	25.56	1003.80	67.25	15.02	0.00
20.00	25.06	1004.04	69.69	0.00	0.00
21.00	24.92	1004.55	71.24	0.00	0.00
22.00	24.23	1004.35	74.98	0.00	0.00
23.00	22.72	1004.20	83.21	0.00	0.00
24.00	22.60	1004.11	85.02	0.00	0.00

AUTOSTRADA SALERNO-REGGIO CALABRIA *Scheda di Monitoraggio Matrice Atmosfera*

ANDAMENTO PARAMETRI METEOROLOGICI					
22 ago 2015					
Ora	Temperatura	Pressione	Umidità Relativa	Radiazione Solare	Pioggia
	°C	mbar	%	W/m ²	mm
1.00	22.06	1004.04	87.16	0.00	0.00
2.00	21.73	1003.68	88.20	0.00	0.00
3.00	21.68	1003.34	88.27	0.00	0.00
4.00	22.13	1003.17	86.37	0.00	0.00
5.00	22.17	1002.94	84.26	0.00	0.00
6.00	21.69	1002.99	84.35	8.43	0.00
7.00	22.26	1003.11	84.49	123.60	0.00
8.00	24.88	1003.17	74.29	372.14	0.00
9.00	25.87	1002.95	70.33	531.36	0.00
10.00	26.97	1003.16	65.47	577.84	0.00
11.00	28.14	1003.19	59.15	627.70	0.00
12.00	28.02	1003.14	60.41	479.75	0.00
13.00	28.41	1003.03	60.67	733.70	0.00
14.00	28.04	1002.66	63.40	766.52	0.00
15.00	27.89	1002.46	62.49	722.95	0.00
16.00	27.13	1002.36	63.00	448.40	0.00
17.00	26.88	1002.16	66.14	349.15	0.00
18.00	26.16	1001.79	70.13	103.56	0.00
19.00	25.27	1001.66	74.57	11.75	0.00
20.00	24.86	1002.03	76.01	0.00	0.00
21.00	24.04	1002.19	78.46	0.00	0.00
22.00	23.51	1002.23	80.05	0.00	0.00
23.00	22.98	1002.37	81.72	0.00	0.00
24.00	23.07	1002.35	81.15	0.00	0.00

ANDAMENTO PARAMETRI METEOROLOGICI					
23 ago 2015					
Ora	Temperatura	Pressione	Umidità Relativa	Radiazione Solare	Pioggia
	°C	mbar	%	W/m ²	mm
1.00	22.60	1002.03	83.20	0.00	0.00
2.00	22.37	1001.54	83.88	0.00	0.00
3.00	22.01	1001.02	85.15	0.00	0.00
4.00	21.68	1000.49	86.72	0.00	0.00
5.00	21.64	1000.69	87.89	0.00	0.00
6.00	21.65	1001.13	87.56	9.72	0.00
7.00	22.94	1001.44	85.81	171.12	0.00
8.00	24.87	1001.44	76.58	384.75	0.00
9.00	26.04	1001.73	71.16	550.33	0.00
10.00	26.37	1002.02	70.20	650.96	0.00
11.00	26.80	1002.10	69.17	873.10	0.00
12.00	27.13	1001.93	68.02	911.79	0.00
13.00	27.28	1001.70	66.42	912.09	0.00
14.00	27.45	1001.50	65.80	849.59	0.00
15.00	27.26	1001.28	65.39	707.05	0.00
16.00	27.23	1001.13	65.40	566.12	0.00
17.00	26.90	1000.86	66.28	375.71	0.00
18.00	26.50	1000.90	66.69	81.21	0.00
19.00	25.70	1001.13	68.78	11.32	0.00
20.00	24.71	1001.42	69.14	0.00	0.00
21.00	23.71	1001.79	69.10	0.00	0.00
22.00	22.90	1001.73	69.91	0.00	0.00
23.00	24.15	1001.75	51.93	0.00	0.00
24.00	24.11	1001.59	50.63	0.00	0.00

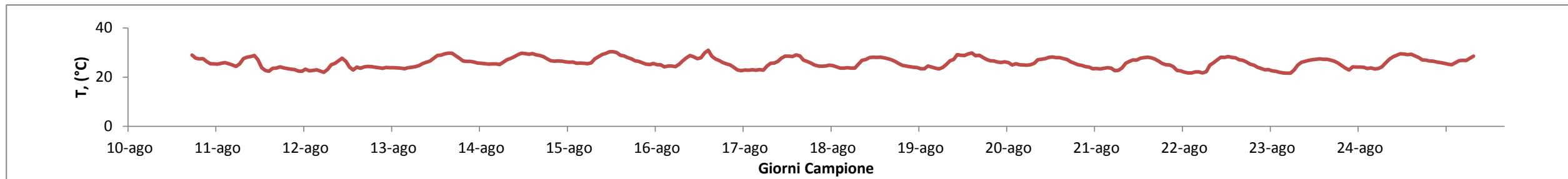
AUTOSTRADA SALERNO-REGGIO CALABRIA

Scheda di Monitoraggio Matrice Atmosfera

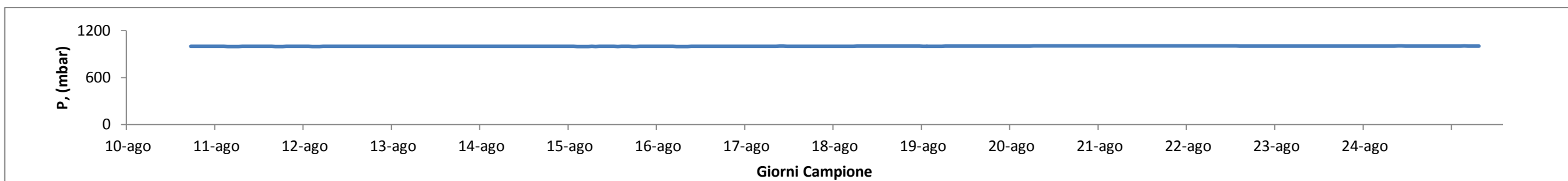
ANDAMENTO PARAMETRI METEOROLOGICI					
24 ago 2015					
Ora	Temperatura	Pressione	Umidità Relativa	Radiazione Solare	Pioggia
	°C	mbar	%	W/m ²	mm
1.00	24.06	1001.32	50.89	0.00	0.00
2.00	23.98	1001.09	51.23	0.00	0.00
3.00	23.54	1001.13	53.28	0.00	0.00
4.00	23.73	1001.20	55.95	0.00	0.00
5.00	23.35	1001.42	58.34	0.00	0.00
6.00	23.51	1001.67	58.32	9.93	0.00
7.00	24.18	1001.78	54.73	172.33	0.00
8.00	25.77	1002.03	53.53	374.18	0.00
9.00	27.22	1002.37	59.62	562.06	0.00
10.00	28.25	1002.62	62.28	579.05	0.00
11.00	28.85	1002.69	58.76	839.59	0.00
12.00	29.47	1002.47	56.97	898.31	0.00
13.00	29.39	1002.26	55.41	896.14	0.00
14.00	29.15	1002.15	61.42	831.97	0.00
15.00	29.28	1001.92	60.09	686.43	0.00
16.00	28.66	1001.80	60.82	543.82	0.00
17.00	28.07	1001.76	62.80	336.85	0.00
18.00	27.00	1001.76	71.63	66.80	0.00
19.00	26.89	1001.72	67.33	13.02	0.00
20.00	26.56	1001.92	60.44	0.00	0.00
21.00	26.48	1002.09	57.22	0.00	0.00
22.00	26.19	1002.24	58.50	0.00	0.00
23.00	25.86	1002.25	58.16	0.00	0.00
24.00	25.61	1002.34	56.31	0.00	0.00

ANDAMENTO PARAMETRI METEOROLOGICI					
25 ago 2015					
Ora	Temperatura	Pressione	Umidità Relativa	Radiazione Solare	Pioggia
	°C	mbar	%	W/m ²	mm
1.00	25.34	1002.31	56.05	0.00	0.00
2.00	25.00	1002.37	60.45	0.00	0.00
3.00	25.79	1002.46	59.10	0.00	0.00
4.00	26.67	1002.57	58.19	0.00	0.00
5.00	26.80	1002.13	56.11	0.00	0.00
6.00	26.76	1002.28	54.72	18.10	0.00
7.00	27.72	1002.18	52.85	198.80	0.00
8.00	28.56	1002.20	52.62	211.79	0.00
9.00	<<	<<	<<	<<	<<
10.00	<<	<<	<<	<<	<<
11.00	<<	<<	<<	<<	<<
12.00	<<	<<	<<	<<	<<
13.00	<<	<<	<<	<<	<<
14.00	<<	<<	<<	<<	<<
15.00	<<	<<	<<	<<	<<
16.00	<<	<<	<<	<<	<<
17.00	<<	<<	<<	<<	<<
18.00	<<	<<	<<	<<	<<
19.00	<<	<<	<<	<<	<<
20.00	<<	<<	<<	<<	<<
21.00	<<	<<	<<	<<	<<
22.00	<<	<<	<<	<<	<<
23.00	<<	<<	<<	<<	<<
24.00	<<	<<	<<	<<	<<

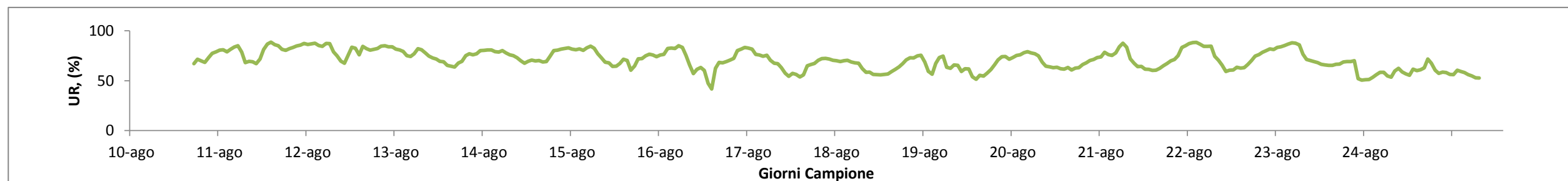
AUTOSTRADA SALERNO-REGGIO CALABRIA Scheda di Monitoraggio Matrice Atmosfera



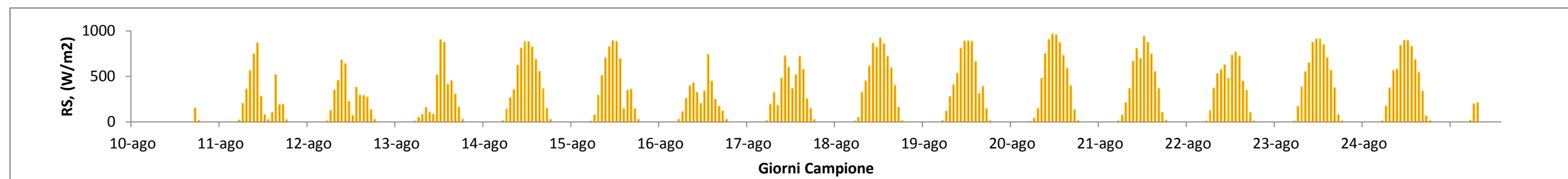
T=Temperatura
espressa in °C



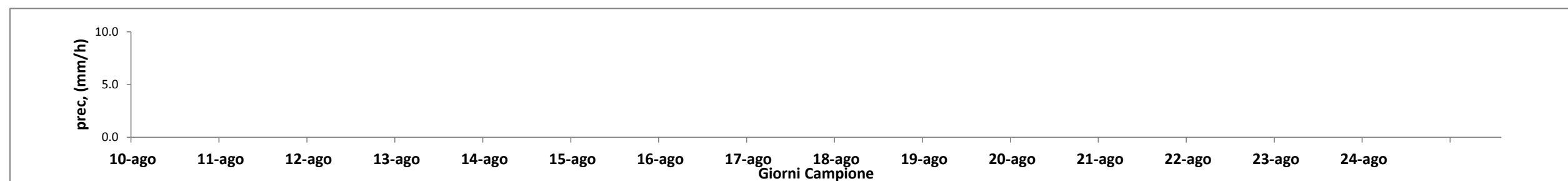
P=Pressione
espressa in
mbar



UR=Umidità
Relativa espressa
in percentuale



RS=Radiazione
Solare
Espressa in W/m²



prec=
Precipitazione
Espressa in
mm/h