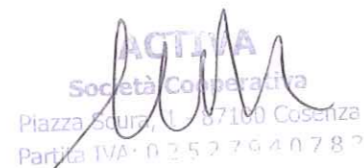
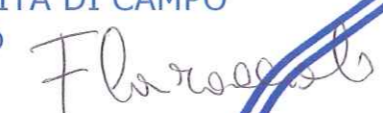


ESECUZIONE E GESTIONE DELLE ATTIVITA' DI MONITORAGGIO IN CORSO D'OPERA E POST OPERAM DELLE COMPONENTI AMBIENTALI DEI LUOGHI INTERESSATI DALLA REALIZZAZIONE DELLE OPERE APPARTENENTI AL MACROLOTTO VI, NONCHE' ATTIVITA' DI MONITORAGGIO IN CORSO D'OPERA DELL'AREA DI CAMPO CALABRO

I CAMPAGNA 2015**COMPONENTE ATMOSFERA****Rapporto di Prova**CODICE: **PODG87PRAT01NL0120150624**RESPONSABILE DI SETTORE
Ing. Monica FiliceRESPONSABILE CONTRATTO
Arch. Maurizio De LucaELABORAZIONE DATI
Ing. Monica FiliceCOORDINAMENTO ATTIVITÀ DI CAMPO
Ing. Francesca Caracciolo
campo c.

villa s.g.



scilla



AUTOSTRADA SALERNO-REGGIO CALABRIA Scheda di Monitoraggio Matrice Atmosfera

INQUADRAMENTO TERRITORIALE

Pto monitoraggio	PRATM01	
Ubicazione	Scilla (RC)	
Coordinate	38° 14' 57.92" N	15° 42' 58.36" E

POSIZIONE DEL RILIEVO



DISTANZA DALLE PRINCIPALI SORGENTI INQUINANTI

x	AUTOSTRADA	100 m	x	STRADA VICINALE	0 m
	INDUSTRIE	-----		FERMATA AUTOBUS	-----
	CANTIERI	-----		STRADA STATALE	-----
	PARCHEGGIO	-----			-----

DISTANZA DAI PRINCIPALI RICETTORI SENSIBILI

SCUOLA	----	AREA DI PREGIO NATURALISTICO	----
RESIDENZIALE ISOLATO	----	EDIFICIO DI CULTO	----
RESIDENZIALE PRODUTTIVO	----	RESIDENZIALE AGGLOMERATO	0 m
EDIFICIO STORICO	----	RUDERE ASSIMILABILE	----
AREA AGRICOLA	----	ATTIVITA' PRODUTTIVA	----

DOCUMENTAZIONE FOTOGRAFICA



MONITORAGGIO QUALITA' DELL'ARIA

DATA INIZIO	23 GIUGNO 2015	DATA FINE	07 LUGLIO 2015
NOTE	Non si sono verificati eventi da segnalare		

AUTOSTRADA SALERNO-REGGIO CALABRIA Scheda di Monitoraggio Matrice Atmosfera

ANDAMENTO INQUINANTI AERODISPERSI ~ 23 giu 2015								
Ora	O ₃	NO ₂	NO	NO _x	CO	PM ₁₀	PM _{2.5}	SO ₂
	media oraria	media oraria	media oraria	media oraria	media oraria	media oraria	media oraria	media oraria
	µg/m ³	µg/m ³	µg/m ³	µg/m ³	mg/m ³	µg/m ³	µg/m ³	µg/m ³
1.00	<<	<<	<<	<<	<<	<<	<<	<<
2.00	<<	<<	<<	<<	<<	<<	<<	<<
3.00	<<	<<	<<	<<	<<	<<	<<	<<
4.00	<<	<<	<<	<<	<<	<<	<<	<<
5.00	<<	<<	<<	<<	<<	<<	<<	<<
6.00	<<	<<	<<	<<	<<	<<	<<	<<
7.00	<<	<<	<<	<<	<<	<<	<<	<<
8.00	<<	<<	<<	<<	<<	<<	<<	<<
9.00	<<	<<	<<	<<	<<	<<	<<	<<
10.00	<<	<<	<<	<<	<<	<<	<<	<<
11.00	<<	<<	<<	<<	<<	<<	<<	<<
12.00	<<	<<	<<	<<	<<	<<	<<	<<
13.00	<<	<<	<<	<<	<<	<<	<<	<<
14.00	<<	<<	<<	<<	<<	<<	<<	<<
15.00	<<	<<	<<	<<	<<	<<	<<	<<
16.00	<<	<<	<<	<<	<<	<<	<<	<<
17.00	<<	<<	<<	<<	<<	<<	<<	<<
18.00	<<	<<	<<	<<	<<	<<	<<	<<
19.00	<<	<<	<<	<<	<<	<<	<<	<<
20.00	81.14	18.45	0.88	19.80	0.10	9.87	4.33	3.06
21.00	71.88	25.42	1.05	27.02	0.11	10.05	4.54	3.19
22.00	68.79	21.74	0.84	23.03	0.10	9.93	4.22	2.93
23.00	50.03	28.54	1.48	30.80	0.10	8.80	4.79	3.47
24.00	77.82	19.38	0.86	20.70	0.10	8.37	4.51	3.01

Massimo	81.14	28.54	1.48	30.80	0.11	10.05	4.79	3.47
Minimo	50.03	18.45	0.84	19.80	0.10	8.37	4.22	2.93
Media	69.93	22.71	1.02	24.27	0.10	9.40	4.48	3.13
Dev. St.	12.14	4.23	0.27	4.60	0.00	0.77	0.22	0.21

ANDAMENTO INQUINANTI AERODISPERSI ~ 24 giu 2015								
Ora	O ₃	NO ₂	NO	NO _x	CO	PM ₁₀	PM _{2.5}	SO ₂
	media oraria	media oraria	media oraria	media oraria	media oraria	media oraria	media oraria	media oraria
	µg/m ³	µg/m ³	µg/m ³	µg/m ³	mg/m ³	µg/m ³	µg/m ³	µg/m ³
1.00	85.34	6.87	0.73	7.99	0.09	7.24	3.91	3.09
2.00	108.46	<<	<<	<<	0.10	9.09	4.60	2.97
3.00	85.21	6.87	0.87	8.20	0.09	9.17	4.65	2.86
4.00	68.82	6.51	0.76	7.67	0.11	11.90	5.42	2.63
5.00	87.51	12.52	0.81	13.75	0.13	13.91	6.30	2.71
6.00	80.42	11.88	1.14	13.63	0.12	12.29	5.76	2.60
7.00	56.05	51.76	14.61	74.17	0.16	16.39	7.38	2.69
8.00	52.08	43.05	5.00	50.71	0.18	22.11	9.67	2.89
9.00	49.20	64.40	14.39	86.46	0.22	27.53	12.98	3.12
10.00	51.88	52.03	5.34	60.21	0.21	26.47	12.47	3.27
11.00	57.28	45.07	3.82	50.92	0.19	24.02	11.28	3.65
12.00	62.82	36.97	4.00	43.10	0.18	20.21	9.53	3.65
13.00	82.08	25.16	2.81	29.47	0.18	16.82	7.95	3.62
14.00	84.61	32.80	2.69	36.93	0.23	26.62	9.17	3.79
15.00	72.74	29.62	2.26	33.09	0.20	23.30	9.27	3.91
16.00	89.88	23.70	2.24	27.13	0.16	16.03	7.10	3.76
17.00	105.73	25.93	3.35	31.07	0.13	13.54	6.20	3.82
18.00	119.22	15.85	0.72	16.95	0.14	15.05	7.04	3.67
19.00	138.14	14.02	1.01	15.58	0.18	18.51	9.00	3.72
20.00	100.61	26.44	1.03	28.02	0.19	21.06	9.61	3.55
21.00	96.92	22.07	0.68	23.11	0.17	19.39	9.29	3.57
22.00	100.54	12.27	0.77	13.45	0.16	17.82	8.53	3.49
23.00	82.26	20.63	1.02	22.19	0.14	16.99	8.32	3.13
24.00	69.68	10.19	0.81	11.43	0.15	17.57	7.85	2.98

Massimo	138.14	64.40	14.61	86.46	0.23	27.53	12.98	3.91
Minimo	49.20	6.51	0.68	7.67	0.09	7.24	3.91	2.60
Media	82.81	25.94	3.08	30.66	0.16	17.63	8.05	3.30
Dev. St.	22.61	16.35	3.88	21.58	0.04	5.63	2.37	0.43

AUTOSTRADA SALERNO-REGGIO CALABRIA Scheda di Monitoraggio Matrice Atmosfera

ANDAMENTO INQUINANTI AERODISPERSI ~ 25 giu 2015								
Ora	O ₃	NO ₂	NO	NO _x	CO	PM ₁₀	PM _{2.5}	SO ₂
	media oraria	media oraria	media oraria	media oraria	media oraria	media oraria	media oraria	media oraria
	µg/m ³	µg/m ³	µg/m ³	µg/m ³	mg/m ³	µg/m ³	µg/m ³	µg/m ³
1.00	64.38	<<	<<	<<	0.16	18.62	9.67	2.80
2.00	69.13	7.23	0.65	8.24	0.15	19.88	10.00	2.60
3.00	67.26	6.41	0.55	7.26	0.17	21.51	10.16	2.52
4.00	77.29	3.49	0.56	4.35	0.18	21.79	10.08	2.38
5.00	72.94	7.20	1.52	9.54	0.14	17.17	7.39	2.32
6.00	71.92	8.94	0.70	10.02	0.14	16.29	6.52	2.26
7.00	79.35	15.34	1.98	18.37	0.15	16.22	6.63	2.26
8.00	80.83	10.81	2.40	14.49	0.18	21.05	10.41	2.57
9.00	98.32	21.08	3.93	27.11	0.17	18.72	8.97	2.70
10.00	88.69	16.85	2.49	20.67	0.20	25.10	11.72	2.84
11.00	107.04	13.18	2.15	16.48	0.19	21.52	10.24	2.92
12.00	106.79	8.20	1.20	10.05	0.17	18.14	8.48	2.95
13.00	103.61	6.43	1.12	8.15	0.15	17.92	7.45	2.75
14.00	100.42	10.17	2.61	14.18	0.20	25.91	16.26	3.08
15.00	98.31	10.47	2.13	13.73	0.23	29.54	9.32	3.29
16.00	103.28	8.39	1.25	10.31	0.13	12.78	5.91	3.31
17.00	101.53	5.71	0.81	6.95	0.12	11.26	5.16	3.37
18.00	103.74	6.08	0.92	7.49	0.10	10.10	5.33	3.42
19.00	94.96	5.74	0.91	7.13	0.10	10.50	5.86	3.53
20.00	102.61	7.15	0.85	8.46	0.11	10.96	5.98	3.21
21.00	89.53	7.78	0.53	8.59	0.12	12.15	6.66	3.08
22.00	82.80	6.50	0.62	7.44	0.13	12.62	6.32	2.93
23.00	69.77	9.81	0.44	10.47	0.16	17.92	9.05	2.72
24.00	78.25	<<	<<	<<	0.20	24.46	11.88	2.70

Massimo	107.04	21.08	3.93	27.11	0.23	29.54	16.26	3.53
Minimo	64.38	3.49	0.44	4.35	0.10	10.10	5.16	2.26
Media	88.03	9.23	1.38	11.34	0.16	18.00	8.56	2.85
Dev. St.	14.42	4.16	0.91	5.40	0.04	5.32	2.62	0.38

ANDAMENTO INQUINANTI AERODISPERSI ~ 26 giu 2015								
Ora	O ₃	NO ₂	NO	NO _x	CO	PM ₁₀	PM _{2.5}	SO ₂
	media oraria	media oraria	media oraria	media oraria	media oraria	media oraria	media oraria	media oraria
	µg/m ³	µg/m ³	µg/m ³	µg/m ³	mg/m ³	µg/m ³	µg/m ³	µg/m ³
1.00	88.85	1.61	0.61	2.54	0.17	22.55	11.15	2.65
2.00	86.04	0.92	0.66	1.93	0.18	20.30	9.80	2.64
3.00	80.80	1.54	0.58	2.42	0.18	20.65	9.27	2.57
4.00	75.81	0.66	0.71	1.75	0.19	21.96	10.90	2.45
5.00	81.48	7.30	1.81	10.07	0.16	19.78	10.19	2.47
6.00	73.60	11.05	0.63	12.01	0.17	19.96	10.32	2.42
7.00	89.77	16.24	2.39	19.90	0.21	20.30	10.85	2.43
8.00	82.38	14.22	1.45	16.44	0.17	21.53	10.16	2.51
9.00	104.39	13.56	1.52	15.90	0.14	16.04	7.24	2.72
10.00	118.74	14.62	1.26	16.55	0.14	17.85	7.18	2.95
11.00	110.89	15.54	1.61	18.01	0.13	11.29	6.63	3.56
12.00	108.12	14.11	1.06	15.74	0.15	13.17	7.07	3.61
13.00	113.86	11.25	1.72	13.89	0.09	9.93	5.29	3.57
14.00	109.36	15.02	2.09	18.22	0.11	10.87	6.18	3.70
15.00	111.90	19.42	2.20	22.79	0.13	15.01	7.49	3.68
16.00	112.67	15.08	1.31	17.09	0.11	12.06	5.96	3.61
17.00	120.02	13.47	1.30	15.46	0.13	12.96	6.38	3.63
18.00	115.68	8.38	1.14	10.13	0.09	9.27	5.18	3.51
19.00	124.06	9.11	0.97	10.60	0.10	8.27	4.43	3.62
20.00	123.58	7.87	0.59	8.77	0.11	9.23	4.79	3.63
21.00	117.49	5.26	0.94	6.70	0.09	9.39	5.01	3.49
22.00	112.25	2.65	0.83	3.91	0.11	9.35	4.23	3.20
23.00	130.08	<<	<<	<<	0.10	9.38	3.97	3.25
24.00	135.16	1.08	0.62	2.04	0.10	11.93	5.95	2.89

Massimo	135.16	19.42	2.39	22.79	0.21	22.55	11.15	3.70
Minimo	73.60	0.66	0.58	1.75	0.09	8.27	3.97	2.42
Media	105.29	9.56	1.22	11.43	0.14	14.71	7.32	3.11
Dev. St.	18.14	5.92	0.55	6.60	0.04	5.02	2.39	0.50

AUTOSTRADA SALERNO-REGGIO CALABRIA *Scheda di Monitoraggio Matrice Atmosfera*

ANDAMENTO INQUINANTI AERODISPERSI ~ 27 giu 2015								
	O ₃	NO ₂	NO	NO _x	CO	PM ₁₀	PM _{2.5}	SO ₂
Ora	media oraria	media oraria	media oraria	media oraria	media oraria	media oraria	media oraria	media oraria
	µg/m ³	µg/m ³	µg/m ³	µg/m ³	mg/m ³	µg/m ³	µg/m ³	µg/m ³
1.00	110.95	0.77	0.30	1.23	0.11	11.68	6.17	2.68
2.00	107.33	0.10	0.38	0.68	0.10	10.82	5.91	2.53
3.00	112.02	<<	0.51	0.74	0.11	9.85	5.43	2.09
4.00	110.56	<<	0.64	0.81	0.09	10.84	5.93	2.33
5.00	95.74	1.57	0.50	2.34	0.11	11.87	4.73	2.30
6.00	71.90	12.35	0.56	13.21	0.11	12.63	6.77	2.17
7.00	96.29	6.75	0.91	8.15	0.13	13.13	7.49	2.28
8.00	107.91	4.13	1.02	5.69	0.12	12.62	7.35	2.32
9.00	113.07	3.13	1.02	4.69	0.12	11.52	7.25	2.59
10.00	112.93	3.34	0.68	4.38	0.10	11.26	6.72	2.66
11.00	110.88	3.21	1.29	5.19	0.11	10.80	6.83	2.92
12.00	116.43	4.38	1.00	5.91	0.09	10.16	6.83	2.87
13.00	113.58	4.75	0.95	6.21	0.10	10.59	7.03	2.89
14.00	113.40	2.61	0.97	4.10	0.12	10.36	6.68	3.02
15.00	118.95	2.73	0.80	3.95	0.09	10.36	6.92	3.06
16.00	117.65	4.16	0.82	5.42	0.12	10.48	6.58	3.07
17.00	120.11	4.21	0.90	5.60	0.10	10.47	6.86	3.14
18.00	122.39	4.82	1.20	6.65	0.10	10.18	6.53	3.14
19.00	114.71	4.35	0.70	5.42	0.12	10.94	6.97	3.26
20.00	102.16	13.08	0.82	14.35	0.11	13.21	7.45	3.30
21.00	125.35	8.93	0.69	9.99	0.13	11.59	6.99	3.33
22.00	101.52	<<	<<	<<	0.12	11.79	7.25	3.06
23.00	100.54	9.33	0.95	10.79	0.13	12.67	7.59	3.30
24.00	97.50	10.28	0.79	11.49	0.12	12.62	8.06	3.30

Massimo	125.35	13.08	1.29	14.35	0.13	13.21	8.06	3.33
Minimo	71.90	0.10	0.30	0.68	0.09	9.85	4.73	2.09
Media	108.91	5.19	0.80	5.96	0.11	11.35	6.76	2.82
Dev. St.	11.32	3.61	0.25	3.86	0.01	1.02	0.73	0.41

ANDAMENTO INQUINANTI AERODISPERSI ~ 28 giu 2015								
	O ₃	NO ₂	NO	NO _x	CO	PM ₁₀	PM _{2.5}	SO ₂
Ora	media oraria	media oraria	media oraria	media oraria	media oraria	media oraria	media oraria	media oraria
	µg/m ³	µg/m ³	µg/m ³	µg/m ³	mg/m ³	µg/m ³	µg/m ³	µg/m ³
1.00	96.94	6.33	0.57	7.20	0.11	12.54	7.53	1.92
2.00	98.07	6.37	0.60	7.29	0.11	12.70	7.66	2.11
3.00	93.32	3.01	0.41	3.64	0.12	12.53	7.66	2.42
4.00	91.08	3.07	0.69	4.13	0.13	14.05	8.02	2.42
5.00	78.11	2.92	0.57	3.79	0.11	13.73	7.29	2.43
6.00	89.09	2.95	0.63	3.92	0.15	16.43	9.05	2.32
7.00	104.69	1.69	0.44	2.36	0.11	11.66	7.19	2.36
8.00	113.98	1.56	1.22	3.42	0.09	9.02	6.10	2.53
9.00	122.93	1.72	1.00	3.26	0.11	9.73	6.78	2.68
10.00	123.62	2.09	0.57	2.96	0.12	11.15	6.57	2.68
11.00	127.60	1.63	0.56	2.49	0.12	11.81	6.68	2.77
12.00	126.34	2.01	0.95	3.46	0.11	11.56	6.96	2.97
13.00	124.96	1.47	0.79	2.68	0.13	11.85	6.82	3.11
14.00	122.33	0.84	0.66	1.85	0.09	9.19	6.60	3.02
15.00	131.47	1.04	0.85	2.34	0.09	10.57	6.75	3.06
16.00	124.86	2.60	0.94	4.05	0.12	11.52	6.54	3.07
17.00	133.16	4.04	1.17	5.84	0.12	11.31	6.65	3.21
18.00	128.50	6.61	1.04	8.21	0.11	10.86	6.75	3.15
19.00	122.95	11.58	0.56	12.44	0.10	12.42	7.67	3.20
20.00	94.34	15.48	0.70	16.55	0.12	12.12	7.40	3.20
21.00	94.30	<<	<<	<<	0.13	13.31	7.67	3.35
22.00	90.44	10.90	0.93	12.33	0.11	13.69	7.67	3.19
23.00	90.46	11.13	1.12	12.85	0.14	15.04	8.88	3.14
24.00	86.40	12.24	0.67	13.26	0.13	15.48	9.07	2.99

Massimo	133.16	15.48	1.22	16.55	0.15	16.43	9.07	3.35
Minimo	78.11	0.84	0.41	1.85	0.09	9.02	6.10	1.92
Media	108.75	4.93	0.77	6.10	0.12	12.26	7.33	2.80
Dev. St.	17.76	4.34	0.24	4.37	0.01	1.86	0.81	0.40

AUTOSTRADA SALERNO-REGGIO CALABRIA Scheda di Monitoraggio Matrice Atmosfera

ANDAMENTO INQUINANTI AERODISPERSI ~ 29 giu 2015								
	O ₃	NO ₂	NO	NO _x	CO	PM ₁₀	PM _{2.5}	SO ₂
Ora	media oraria	media oraria	media oraria	media oraria	media oraria	media oraria	media oraria	media oraria
	µg/m ³	µg/m ³	µg/m ³	µg/m ³	mg/m ³	µg/m ³	µg/m ³	µg/m ³
1.00	85.95	4.66	0.92	6.07	0.13	15.06	9.03	2.82
2.00	98.06	2.35	0.46	3.04	0.13	14.76	8.26	2.56
3.00	89.58	2.67	0.24	3.04	0.14	16.33	9.41	2.39
4.00	87.61	2.12	0.76	3.28	0.14	16.82	9.80	2.46
5.00	96.96	5.93	0.53	6.74	0.14	15.68	9.50	2.53
6.00	96.11	5.79	1.05	7.40	0.15	17.00	9.93	2.41
7.00	98.59	12.59	1.85	15.42	0.15	16.33	9.60	2.23
8.00	94.15	16.63	1.51	18.94	0.15	18.24	10.89	2.41
9.00	95.68	30.10	3.40	35.31	0.15	19.08	11.16	2.36
10.00	108.68	11.20	1.14	12.95	0.13	15.41	9.53	2.73
11.00	114.20	10.42	1.21	12.27	0.15	19.40	11.36	2.72
12.00	119.12	7.20	0.71	8.29	0.16	17.67	10.82	2.87
13.00	116.38	8.02	1.12	9.74	0.15	18.17	10.93	2.82
14.00	117.98	4.68	1.12	6.40	0.14	17.62	10.69	3.02
15.00	104.61	8.27	1.27	10.22	0.16	18.73	10.59	3.10
16.00	119.13	5.48	0.83	6.76	0.13	14.99	8.91	3.16
17.00	111.46	5.20	1.08	6.85	0.17	19.89	10.05	3.17
18.00	117.20	2.60	0.61	3.54	0.15	16.70	10.61	3.04
19.00	106.06	7.13	0.77	8.32	0.15	15.60	9.23	3.22
20.00	82.01	<<	<<	<<	0.14	14.22	8.39	3.20
21.00	93.98	13.73	1.10	15.42	0.11	8.68	6.21	3.35
22.00	96.01	4.83	0.73	5.95	0.10	8.98	5.94	2.65
23.00	106.67	5.23	0.70	6.30	0.08	9.28	6.22	2.67
24.00	96.48	5.42	0.75	6.57	0.10	11.13	7.22	2.43

Massimo	119.13	30.10	3.40	35.31	0.17	19.89	11.36	3.35
Minimo	82.01	2.12	0.24	3.04	0.08	8.68	5.94	2.23
Media	102.19	7.92	1.04	9.51	0.14	15.66	9.34	2.76
Dev. St.	11.32	6.14	0.62	7.02	0.02	3.21	1.60	0.33

ANDAMENTO INQUINANTI AERODISPERSI ~ 30 giu 2015								
	O ₃	NO ₂	NO	NO _x	CO	PM ₁₀	PM _{2.5}	SO ₂
Ora	media oraria	media oraria	media oraria	media oraria	media oraria	media oraria	media oraria	media oraria
	µg/m ³	µg/m ³	µg/m ³	µg/m ³	mg/m ³	µg/m ³	µg/m ³	µg/m ³
1.00	106.38	2.07	0.42	2.71	0.11	9.81	6.56	2.15
2.00	84.86	1.53	0.62	2.49	0.10	10.22	6.42	2.24
3.00	95.16	0.69	0.61	1.63	0.11	10.29	6.80	2.14
4.00	92.83	<<	0.71	1.05	0.10	8.57	5.85	2.19
5.00	103.72	2.58	0.27	3.00	0.14	17.14	10.01	1.98
6.00	88.85	10.83	0.91	12.22	0.23	31.56	17.54	1.91
7.00	61.98	34.80	5.10	42.63	0.09	11.34	6.89	1.91
8.00	89.74	20.58	1.95	23.58	0.11	10.90	7.28	1.86
9.00	124.81	7.28	0.78	8.47	0.12	11.31	6.85	2.32
10.00	124.14	3.97	0.55	4.80	0.10	9.00	6.64	2.41
11.00	124.52	22.44	5.88	31.45	0.09	10.91	6.70	2.44
12.00	128.42	13.28	1.80	16.03	0.10	9.64	6.06	2.59
13.00	121.27	2.33	0.98	3.84	0.09	10.01	6.51	2.55
14.00	132.94	5.06	0.84	6.36	0.11	10.55	6.92	2.66
15.00	125.79	5.10	0.75	6.24	0.10	11.01	6.78	2.61
16.00	115.45	4.65	0.94	6.09	0.10	10.45	6.64	2.72
17.00	132.74	4.17	0.99	5.68	0.11	11.16	6.70	2.76
18.00	127.37	2.15	0.62	3.10	0.10	11.76	7.13	2.86
19.00	124.67	<<	<<	<<	0.13	13.41	8.12	2.85
20.00	99.53	13.31	0.83	14.59	0.12	13.38	8.33	2.87
21.00	97.57	11.45	0.88	12.80	0.10	12.62	7.92	2.70
22.00	100.17	7.08	0.75	8.23	0.12	12.31	7.66	2.58
23.00	73.57	7.38	0.69	8.44	0.13	15.36	8.71	2.37
24.00	70.94	8.43	0.61	9.36	0.17	20.28	11.62	2.39

Massimo	132.94	34.80	5.88	42.63	0.23	31.56	17.54	2.87
Minimo	61.98	0.69	0.27	1.05	0.09	8.57	5.85	1.86
Media	106.14	8.69	1.24	10.21	0.12	12.63	7.78	2.42
Dev. St.	21.01	8.27	1.40	10.16	0.03	4.82	2.45	0.32

AUTOSTRADA SALERNO-REGGIO CALABRIA *Scheda di Monitoraggio Matrice Atmosfera*

ANDAMENTO INQUINANTI AERODISPERSI ~ 01 lug 2015								
Ora	O ₃	NO ₂	NO	NO _x	CO	PM ₁₀	PM _{2.5}	SO ₂
	media oraria	media oraria	media oraria	media oraria	media oraria	media oraria	media oraria	media oraria
	µg/m ³	µg/m ³	µg/m ³	µg/m ³	mg/m ³	µg/m ³	µg/m ³	µg/m ³
1.00	80.61	4.35	0.71	5.43	0.17	20.37	12.06	2.22
2.00	73.43	4.00	0.61	4.93	0.17	21.58	12.70	2.26
3.00	77.27	0.96	0.45	1.66	0.19	24.06	13.09	2.19
4.00	76.29	0.44	0.75	1.59	0.18	20.73	12.16	2.18
5.00	62.18	10.09	2.62	14.11	0.26	63.41	30.20	2.27
6.00	55.25	20.07	1.17	21.87	0.31	39.64	21.27	2.02
7.00	67.96	19.29	1.63	21.78	0.16	18.49	11.60	2.01
8.00	94.15	7.13	1.13	8.86	0.15	17.42	12.06	2.23
9.00	112.24	6.74	1.81	9.52	0.15	17.74	11.95	2.37
10.00	103.05	9.00	1.85	11.84	0.16	18.80	11.24	2.36
11.00	100.89	24.09	5.09	31.90	0.16	17.56	10.69	2.56
12.00	106.11	3.70	1.08	5.36	0.15	19.18	11.20	2.58
13.00	107.58	10.78	2.48	14.59	0.17	19.49	10.62	2.74
14.00	110.04	4.10	0.96	5.57	0.15	16.17	10.25	2.73
15.00	112.95	4.77	0.96	6.24	0.14	15.95	10.01	2.70
16.00	129.21	3.88	1.25	5.80	0.15	16.87	11.09	2.77
17.00	124.34	5.08	0.81	6.31	0.14	16.34	10.53	2.91
18.00	109.65	<<	<<	<<	0.15	15.67	10.48	2.89
19.00	110.00	5.03	0.64	6.01	0.17	18.30	11.55	2.87
20.00	83.51	12.87	1.20	14.71	0.16	16.90	10.74	3.08
21.00	80.55	9.20	0.58	10.09	0.13	11.83	7.44	2.69
22.00	98.89	5.20	0.37	5.77	0.13	12.74	7.99	2.66
23.00	88.63	7.63	0.74	8.77	0.10	11.08	7.10	2.28
24.00	90.13	5.60	0.49	6.36	0.11	11.50	7.41	2.13
Massimo	129.21	24.09	5.09	31.90	0.31	63.41	30.20	3.08
Minimo	55.25	0.44	0.37	1.59	0.10	11.08	7.10	2.01
Media	93.95	8.00	1.28	9.96	0.16	20.08	11.89	2.49
Dev. St.	19.58	6.03	1.03	7.22	0.04	10.77	4.75	0.31

ANDAMENTO INQUINANTI AERODISPERSI ~ 02 lug 2015								
Ora	O ₃	NO ₂	NO	NO _x	CO	PM ₁₀	PM _{2.5}	SO ₂
	media oraria	media oraria	media oraria	media oraria	media oraria	media oraria	media oraria	media oraria
	µg/m ³	µg/m ³	µg/m ³	µg/m ³	mg/m ³	µg/m ³	µg/m ³	µg/m ³
1.00	93.41	3.22	0.36	3.78	0.13	15.15	9.70	1.95
2.00	86.72	2.55	0.50	3.31	0.15	18.30	11.30	1.95
3.00	82.28	2.57	0.69	3.62	0.11	13.65	8.77	1.82
4.00	103.37	0.51	0.35	1.05	0.12	13.73	8.53	1.77
5.00	88.73	4.22	0.75	5.37	0.11	14.65	8.47	1.99
6.00	77.33	9.98	0.94	11.42	0.14	14.77	8.90	1.78
7.00	56.42	35.45	5.27	43.53	0.13	16.00	9.72	1.58
8.00	80.40	22.87	3.25	27.85	0.14	17.66	11.59	2.15
9.00	78.86	19.58	2.29	23.09	0.16	18.15	11.69	2.15
10.00	110.77	9.56	1.02	11.12	0.16	18.40	11.25	2.40
11.00	112.04	8.68	1.22	10.55	0.15	17.63	13.19	2.39
12.00	127.46	6.55	1.06	8.19	0.17	18.46	11.97	2.53
13.00	133.72	7.22	0.66	8.23	0.17	20.40	13.73	2.60
14.00	149.72	6.32	0.58	7.21	0.17	20.86	12.72	2.76
15.00	152.74	6.96	0.94	8.40	0.18	19.90	12.90	2.78
16.00	151.77	8.22	0.82	9.48	0.19	22.06	13.90	2.80
17.00	145.79	<<	<<	<<	0.18	22.24	13.30	3.30
18.00	125.09	10.14	1.01	11.69	0.16	18.78	12.02	2.51
19.00	116.85	15.18	0.85	16.49	0.16	19.93	13.32	2.46
20.00	107.44	12.67	0.91	14.06	0.21	25.93	16.12	2.42
21.00	114.58	7.28	0.64	8.26	0.16	17.70	11.73	2.37
22.00	111.58	5.95	0.24	6.32	0.14	15.76	10.67	2.33
23.00	106.04	7.83	0.43	8.48	0.15	16.97	10.86	2.28
24.00	99.68	5.69	0.69	6.75	0.15	16.90	10.35	2.16
Massimo	152.74	35.45	5.27	43.53	0.21	25.93	16.12	3.30
Minimo	56.42	0.51	0.24	1.05	0.11	13.65	8.47	1.58
Media	108.87	9.53	1.11	11.23	0.15	18.08	11.53	2.30
Dev. St.	26.01	7.71	1.12	9.33	0.02	2.93	1.94	0.40

AUTOSTRADA SALERNO-REGGIO CALABRIA Scheda di Monitoraggio Matrice Atmosfera

ANDAMENTO INQUINANTI AERODISPERSI ~ 03 lug 2015								
Ora	O ₃	NO ₂	NO	NO _x	CO	PM ₁₀	PM _{2.5}	SO ₂
	media oraria	media oraria	media oraria	media oraria	media oraria	media oraria	media oraria	media oraria
	µg/m ³	µg/m ³	µg/m ³	µg/m ³	mg/m ³	µg/m ³	µg/m ³	µg/m ³
1.00	96.01	6.29	0.58	7.18	0.18	21.41	13.10	2.24
2.00	99.84	4.42	0.62	5.37	0.18	20.92	13.60	2.27
3.00	97.00	2.86	0.42	3.51	0.17	21.48	12.98	2.21
4.00	91.67	2.91	0.36	3.46	0.19	22.45	13.89	2.19
5.00	74.07	11.21	0.84	12.49	0.20	24.43	14.54	2.06
6.00	58.77	20.20	0.69	21.25	0.19	25.53	14.70	1.95
7.00	67.67	26.98	1.50	29.28	0.17	22.82	13.61	2.00
8.00	97.70	8.55	0.73	9.68	0.16	19.56	12.49	2.27
9.00	103.37	9.90	0.69	10.96	0.17	19.44	12.56	2.34
10.00	115.47	7.47	0.73	8.59	0.17	19.05	12.76	2.43
11.00	112.08	6.10	0.66	7.11	0.16	20.18	13.11	2.40
12.00	146.67	8.61	0.53	9.42	0.18	21.33	13.73	2.74
13.00	131.38	6.25	0.62	7.20	0.17	18.82	13.15	2.57
14.00	130.31	6.28	1.02	7.84	0.16	17.81	11.34	2.56
15.00	130.83	4.22	0.36	4.78	0.14	15.30	10.33	2.55
16.00	131.43	<<	<<	<<	0.14	15.14	10.49	2.89
17.00	124.37	10.46	0.90	11.84	0.14	18.56	11.95	2.50
18.00	154.63	4.91	0.56	5.77	0.17	19.94	13.72	2.81
19.00	135.48	4.68	0.51	5.46	0.17	22.37	14.38	2.61
20.00	105.96	11.55	0.88	12.90	0.17	23.17	14.53	2.39
21.00	100.98	10.50	0.32	10.99	0.18	22.16	13.97	2.32
22.00	102.49	6.71	0.54	7.54	0.16	21.08	13.82	2.31
23.00	102.37	6.12	0.35	6.65	0.14	18.12	11.91	2.28
24.00	109.33	4.80	0.52	5.59	0.15	18.51	12.94	2.33

Massimo	154.63	26.98	1.50	29.28	0.20	25.53	14.70	2.89
Minimo	58.77	2.86	0.32	3.46	0.14	15.14	10.33	1.95
Media	109.16	8.35	0.65	9.34	0.17	20.40	13.07	2.38
Dev. St.	23.67	5.53	0.26	5.83	0.02	2.55	1.19	0.24

ANDAMENTO INQUINANTI AERODISPERSI ~ 04 lug 2015								
Ora	O ₃	NO ₂	NO	NO _x	CO	PM ₁₀	PM _{2.5}	SO ₂
	media oraria	media oraria	media oraria	media oraria	media oraria	media oraria	media oraria	media oraria
	µg/m ³	µg/m ³	µg/m ³	µg/m ³	mg/m ³	µg/m ³	µg/m ³	µg/m ³
1.00	104.66	1.92	0.40	2.52	0.13	17.12	11.70	2.25
2.00	107.04	0.90	0.46	1.61	0.13	16.95	11.28	2.29
3.00	105.22	0.13	0.53	0.94	0.16	17.50	11.77	2.28
4.00	92.87	0.06	0.33	0.56	0.16	19.46	12.29	2.18
5.00	82.06	4.20	0.46	4.91	0.19	22.11	13.16	2.07
6.00	73.35	10.28	0.43	10.94	0.18	21.39	12.81	2.00
7.00	78.60	17.87	0.74	19.02	0.16	17.98	11.90	2.05
8.00	104.09	4.59	0.81	5.83	0.15	15.83	10.67	2.31
9.00	96.54	4.28	0.55	5.13	0.13	15.83	10.11	2.25
10.00	106.11	5.44	0.59	6.33	0.15	17.21	11.77	2.38
11.00	101.09	6.57	0.92	7.98	0.13	16.17	11.30	2.30
12.00	91.07	5.49	0.61	6.43	0.14	16.35	10.88	2.22
13.00	117.57	5.94	0.63	6.91	0.15	17.92	10.33	2.44
14.00	112.14	5.38	0.66	6.39	0.16	17.74	10.19	2.39
15.00	123.63	<<	<<	<<	0.15	17.57	10.05	2.72
16.00	126.84	4.47	0.82	5.73	0.15	18.31	10.65	2.50
17.00	123.50	4.38	0.67	5.40	0.17	19.56	11.65	3.43
18.00	132.58	5.60	0.69	6.65	0.17	20.11	12.09	2.59
19.00	114.66	10.04	0.40	10.65	0.19	22.84	14.27	2.43
20.00	78.68	24.77	0.68	25.81	0.20	27.41	17.93	2.17
21.00	88.49	21.32	0.58	22.21	0.21	27.97	18.38	2.29
22.00	104.84	10.22	0.62	11.17	0.20	27.16	17.73	2.40
23.00	105.80	8.63	0.54	9.47	0.22	25.70	16.56	2.35
24.00	95.30	10.26	0.50	11.02	0.21	27.25	17.80	2.28

Massimo	132.58	24.77	0.92	25.81	0.22	27.97	18.38	3.43
Minimo	73.35	0.06	0.33	0.56	0.13	15.83	10.05	2.00
Media	102.78	7.51	0.59	8.42	0.17	20.14	12.80	2.36
Dev. St.	15.92	6.33	0.15	6.38	0.03	4.10	2.75	0.28

AUTOSTRADA SALERNO-REGGIO CALABRIA *Scheda di Monitoraggio Matrice Atmosfera*

ANDAMENTO INQUINANTI AERODISPERSI ~ 05 lug 2015								
Ora	O ₃	NO ₂	NO	NO _x	CO	PM ₁₀	PM _{2.5}	SO ₂
	media oraria	media oraria	media oraria	media oraria	media oraria	media oraria	media oraria	media oraria
	µg/m ³	µg/m ³	µg/m ³	µg/m ³	mg/m ³	µg/m ³	µg/m ³	µg/m ³
1.00	94.68	8.23	0.47	8.95	0.21	28.07	18.46	2.26
2.00	94.88	3.13	0.55	3.98	0.23	27.20	17.76	3.28
3.00	113.09	1.44	0.59	2.34	0.20	24.54	15.63	3.31
4.00	118.95	0.08	0.59	0.99	0.21	25.15	16.12	2.43
5.00	107.67	0.44	0.56	1.31	0.18	25.04	16.04	2.33
6.00	97.59	3.83	0.49	4.59	0.21	26.30	17.04	2.27
7.00	93.32	4.87	0.41	5.49	0.20	25.07	16.06	2.24
8.00	108.71	2.52	0.75	3.67	0.20	23.97	15.18	3.36
9.00	111.65	2.28	0.56	3.14	0.17	22.10	13.68	2.39
10.00	117.21	2.60	0.30	3.05	0.19	22.90	14.32	2.43
11.00	126.20	1.09	0.69	2.15	0.18	22.28	13.82	2.49
12.00	133.69	1.72	0.74	2.86	0.17	23.28	14.63	2.56
13.00	122.75	2.21	0.54	3.04	0.20	22.63	14.11	2.47
14.00	128.89	<<	<<	<<	0.17	22.01	13.61	2.81
15.00	136.56	1.20	0.51	1.99	0.19	22.80	14.24	2.61
16.00	123.72	1.64	0.42	2.29	0.17	22.40	13.92	2.50
17.00	136.74	3.36	0.44	4.03	0.18	23.97	15.18	2.63
18.00	124.93	9.03	0.64	10.00	0.21	24.35	15.48	2.52
19.00	118.78	10.45	0.38	11.03	0.19	23.93	15.14	3.44
20.00	97.01	17.40	0.90	18.77	0.22	26.95	17.56	3.34
21.00	116.83	8.37	0.65	9.37	0.21	25.16	16.13	2.46
22.00	118.45	6.20	0.63	7.16	0.20	25.76	16.61	2.43
23.00	112.95	5.66	0.67	6.68	0.19	25.32	16.26	2.40
24.00	113.14	5.47	0.32	5.97	0.20	25.80	16.64	2.38

Massimo	136.74	17.40	0.90	18.77	0.23	28.07	18.46	3.44
Minimo	93.32	0.08	0.30	0.99	0.17	22.01	13.61	2.24
Media	115.35	4.49	0.56	5.34	0.20	24.46	15.57	2.64
Dev. St.	13.05	4.05	0.14	4.12	0.02	1.71	1.37	0.39

ANDAMENTO INQUINANTI AERODISPERSI ~ 06 lug 2015								
Ora	O ₃	NO ₂	NO	NO _x	CO	PM ₁₀	PM _{2.5}	SO ₂
	media oraria	media oraria	media oraria	media oraria	media oraria	media oraria	media oraria	media oraria
	µg/m ³	µg/m ³	µg/m ³	µg/m ³	mg/m ³	µg/m ³	µg/m ³	µg/m ³
1.00	112.54	1.71	0.36	2.26	0.20	26.13	16.90	2.38
2.00	97.52	3.24	0.42	3.88	0.23	28.77	19.01	2.24
3.00	83.11	1.13	0.49	1.89	0.24	31.13	20.90	2.13
4.00	93.09	0.79	0.38	1.37	0.23	29.29	19.43	2.21
5.00	75.82	7.25	0.93	8.67	0.23	29.51	19.61	2.08
6.00	56.99	16.67	0.58	17.57	0.25	31.69	21.35	1.91
7.00	95.01	13.29	0.71	14.38	0.23	28.60	18.88	2.29
8.00	97.67	15.39	2.41	19.09	0.21	25.99	16.79	3.33
9.00	104.87	8.24	0.46	8.94	0.19	25.32	16.25	2.37
10.00	108.11	8.44	0.68	9.49	0.20	25.29	16.23	2.39
11.00	108.82	8.80	0.67	9.83	0.21	25.89	16.71	2.37
12.00	111.66	6.11	0.54	6.94	0.21	25.41	16.33	2.40
13.00	126.40	<<	<<	<<	0.19	24.40	15.52	2.81
14.00	109.23	7.20	0.55	8.04	0.18	23.33	14.66	2.38
15.00	105.95	6.07	1.15	7.83	0.16	21.66	13.33	2.32
16.00	95.05	10.52	0.73	11.65	0.17	21.02	12.82	2.27
17.00	102.76	8.97	0.88	10.31	0.17	20.67	12.54	2.33
18.00	98.19	7.91	0.50	8.67	0.18	21.02	12.82	2.30
19.00	96.41	8.10	0.68	9.14	0.19	25.62	16.50	2.32
20.00	83.85	13.03	0.50	13.80	0.19	26.23	16.98	2.21
21.00	87.74	15.26	0.91	16.65	0.19	22.59	14.07	2.20
22.00	93.80	7.90	0.92	9.32	0.18	22.40	13.92	2.25
23.00	84.19	6.44	0.44	7.11	0.15	19.81	11.85	2.13
24.00	99.30	7.39	0.49	8.14	0.18	20.99	12.79	2.23

Massimo	126.40	16.67	2.41	19.09	0.25	31.69	21.35	3.33
Minimo	56.99	0.79	0.36	1.37	0.15	19.81	11.85	1.91
Media	97.00	8.26	0.71	9.35	0.20	25.11	16.09	2.33
Dev. St.	14.17	4.35	0.42	4.69	0.03	3.45	2.76	0.27

AUTOSTRADA SALERNO-REGGIO CALABRIA Scheda di Monitoraggio Matrice Atmosfera

ANDAMENTO INQUINANTI AERODISPERSI ~ 07 lug 2015								
Ora	O ₃	NO ₂	NO	NO _x	CO	PM ₁₀	PM _{2.5}	SO ₂
	media oraria	media oraria	media oraria	media oraria	media oraria	media oraria	media oraria	media oraria
	µg/m ³	µg/m ³	µg/m ³	µg/m ³	mg/m ³	µg/m ³	µg/m ³	µg/m ³
1.00	86.10	6.29	0.51	7.08	0.18	24.55	15.64	2.12
2.00	92.40	3.96	0.50	4.72	0.22	27.16	17.73	2.21
3.00	76.76	3.23	0.71	4.32	0.24	32.44	21.96	2.05
4.00	69.85	2.21	0.44	2.89	0.25	32.50	22.00	1.98
5.00	64.72	7.10	0.58	7.99	0.26	34.03	23.22	1.94
6.00	<<	<<	<<	<<	<<	<<	<<	<<
7.00	66.88	33.72	1.93	36.68	0.22	26.94	17.55	2.00
8.00	81.57	30.93	2.96	35.47	0.19	23.78	15.02	2.17
9.00	93.76	20.80	1.38	22.92	0.17	21.26	13.01	2.28
10.00	101.06	8.89	0.92	10.30	0.21	24.39	15.51	2.30
11.00	99.93	13.13	1.56	15.52	0.20	24.54	15.63	2.27
12.00	102.70	<<	<<	<<	0.20	23.48	14.78	2.59
13.00	118.57	6.02	0.76	7.18	0.19	23.66	14.93	2.44
14.00	97.79	6.24	0.53	7.06	0.18	23.78	15.02	2.28
15.00	112.99	7.61	0.64	8.59	0.17	22.12	13.70	2.41
16.00	94.45	10.07	0.89	11.44	0.20	23.51	14.81	2.29
17.00	89.05	11.86	0.91	13.25	0.18	24.45	15.56	2.26
18.00	91.30	7.65	0.78	8.85	0.19	24.07	15.25	2.27
19.00	76.24	10.49	0.66	11.50	0.20	25.41	16.33	2.14
20.00	82.76	21.15	0.72	22.26	0.23	30.80	20.64	3.25
21.00	75.91	18.34	0.61	19.29	0.21	26.69	17.35	2.14
22.00	86.09	7.52	0.77	8.70	0.21	26.02	16.82	2.19
23.00	90.74	6.72	0.60	7.64	0.20	24.12	15.29	2.19
24.00	80.12	7.50	0.59	8.41	0.22	26.15	16.92	2.11

Massimo	118.57	33.72	2.96	36.68	0.26	34.03	23.22	3.25
Minimo	64.72	2.21	0.44	2.89	0.17	21.26	13.01	1.94
Media	88.34	11.43	0.91	12.82	0.20	25.91	16.72	2.25
Dev. St.	13.75	8.48	0.59	9.22	0.02	3.41	2.73	0.26

AUTOSTRADA SALERNO-REGGIO CALABRIA Scheda di Monitoraggio Matrice Atmosferica

CONCENTRAZIONI MEDIE GIORNALIERE DI Idrocarburi Policiclici Aromatici (IPA) e Metalli (Pb, Cd, As, Ni, Hg)							
data	PTS ¹	IPA ²	Piombo ²	Cadmio ²	Arsenico ²	Nichel ²	Mercurio ²
	24h µg/m ³	24h ng/m ³	24h µg/m ³	24h ng/m ³	24h ng/m ³	24h ng/m ³	24h ng/m ³
24/06/2015	63.2	0.12	0.003	<LDR	0.33	4.9	0.65
25/06/2015	90.7	<LDR	0.004	<LDR	<LDR	3.2	<LDR
26/06/2015	45.2	<LDR	0.002	<LDR	<LDR	2.8	<LDR
27/06/2015	36.2	<LDR	0.001	<LDR	0.44	1.31	<LDR
28/06/2015	25.1	<LDR	0.001	<LDR	<LDR	1.74	<LDR
29/06/2015	29.4	<LDR	0.001	<LDR	<LDR	1.85	<LDR
30/06/2015	25.6	<LDR	0.001	<LDR	<LDR	1.64	<LDR
01/07/2015	27.4	<LDR	0.001	<LDR	<LDR	2.5	3.6
02/07/2015	30.2	<LDR	0.002	<LDR	<LDR	3.4	4.8
03/07/2015	27.3	<LDR	0.003	<LDR	0.22	4.4	2.8
04/07/2015	25.4	<LDR	0.002	<LDR	0.55	3.2	0.33
05/07/2015	28.0	<LDR	0.003	<LDR	0.22	2.1	0.22
06/07/2015	30.0	<LDR	0.004	<LDR	<LDR	3.5	<LDR
07/07/2015	30.5	<LDR	0.003	<LDR	0.22	3.5	<LDR

Di seguito, per ogni elemento investigato, il Limite di Rilevabilità (LDR)

	IPA	Pb	Cd	As	Ni	Hg
	ng/m ³	µg/m ³	ng/m ³	ng/m ³	ng/m ³	ng/m ³
LDR	0.1	0.001	0.2	0.2	0.2	0.2

CONCENTRAZIONI MEDIESETTIMANALI DI BTEX ³				
Settimana	BENZENE ² µg/m ³	TOLUENE µg/m ³	ETILBENZENE µg/m ³	XILENI µg/m ³
23 --30 GIUGNO 2015	<0.05	<0.10	<0.05	<0.05
30 GIUGNO- 7 LUGLIO 2015	<0.05	<0.10	<0.05	<0.05

¹ La concentrazione di Polveri Totali Sospese (PTS) è stata regolamentata dal DPR 203/88 e DM 25/11/1994, abrogati dal DM 60/02. La soglia di attenzione era posta in 150 µg/m³.

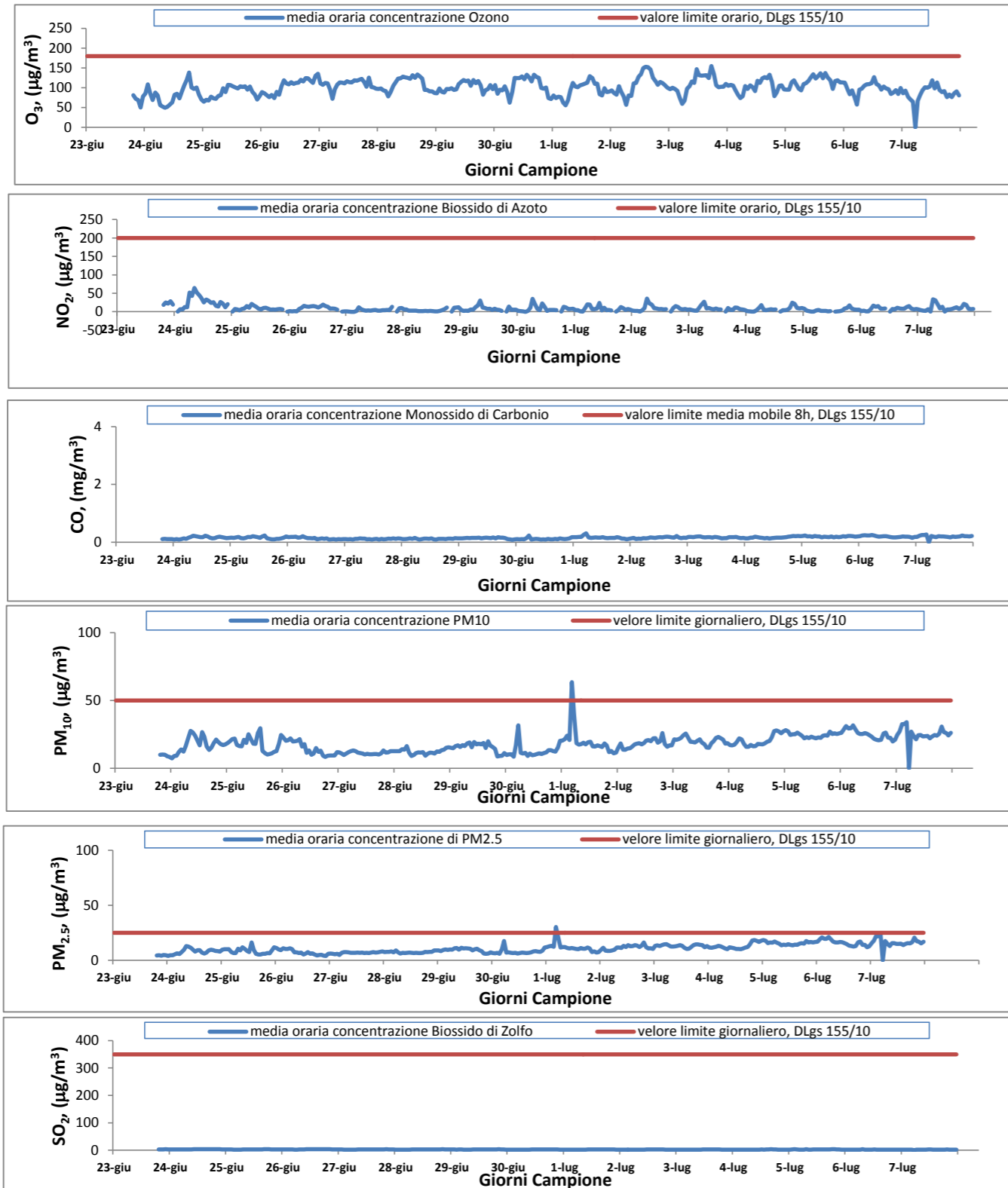
² Le concentrazioni di Benzo(a)Pirene (Idrocarburo Policiclico Aromatico(IPA)), Piombo (Pb), Nichel (Ni), Arsenico (As), Benzene (C₆H₆), Cadmio (Cd), Mercurio (Hg), nelle polveri aerodisperse sono attualmente normate dal DLgs 155/10.

Di seguito i valori limite

- Benzo(a)Pirene (1 ng/m³);
- Pb (0.5 µg/m³);
- Cd (5 ng/m³);
- As (6 ng/m³);
- Ni (20 ng/m³);
- Benzene (5 µg/m³).

³ BTEX (Benzene, Toluene, Etilbenzene e Xilene) determinati attraverso campionamento passivo mediante l'utilizzo di Campionatore a Diffusione (RADIELLO)

AUTOSTRADA SALERNO-REGGIO CALABRIA Scheda di Monitoraggio Matrice Atmosfera



Normativa di Riferimento¹

Inquinante	Normativa	Valore limite orario ²	Valore limite (media 8h) ³	Valore limite 24h ⁴	Valore limite annuale ⁵	Soglia di allarme
Ozono (O ₃)	DLgs 155/10	180 $\mu\text{g}/\text{m}^3$	120 $\mu\text{g}/\text{m}^3$ da non superare più di 25 volte per anno civile	—	—	240 $\mu\text{g}/\text{m}^3$
Biossido di Azoto (NO ₂)	DLgs 155/10	200 $\mu\text{g}/\text{m}^3$ da non superare più di 18 volte per anno civile	—	—	40 $\mu\text{g}/\text{m}^3$	400 $\mu\text{g}/\text{m}^3$
Monossido di Carbonio (CO)	DLgs 155/10	—	10 mg/m^3	—	—	—
Polveri Sottili con AD < 10 μm (PM ₁₀)	DLgs 155/10	—	—	50 $\mu\text{g}/\text{m}^3$ da non superare più di 35 volte per anno civile	40 $\mu\text{g}/\text{m}^3$	—
Polveri Sottili con AD < 2,5 μm (PM _{2,5})	DLgs 155/10	—	—	—	25 $\mu\text{g}/\text{m}^3$	—
Biossido di Zolfo (SO ₂)	DLgs 155/10	350 $\mu\text{g}/\text{m}^3$ da non superare più di 24 volte per anno civile	—	125 $\mu\text{g}/\text{m}^3$ da non superare più di 3 volte per anno civile	—	500 $\mu\text{g}/\text{m}^3$

¹ Normativa vigente alla data di emissione del certificato

² Valore limite per la protezione della salute umana da calcolare su un periodo di mediazione di 1 ora.

³ Valore limite da calcolare sulla media mobile trascinata di 8ore.

⁴ Valore limite giornaliero per la protezione della salute umana da calcolare su un periodo di 24 ore consecutive.

⁵ Valore limite annuale per la protezione della salute umana- anno civile

AUTOSTRADA SALERNO-REGGIO CALABRIA Scheda di Monitoraggio Matrice Atmosfera

ANDAMENTO VARIABILE VENTO 23-giu-15		
Ora	Velocità	Direzione
	m/s	Gradi
1.00	<<	<<
2.00	<<	<<
3.00	<<	<<
4.00	<<	<<
5.00	<<	<<
6.00	<<	<<
7.00	<<	<<
8.00	<<	<<
9.00	<<	<<
10.00	<<	<<
11.00	<<	<<
12.00	<<	<<
13.00	<<	<<
14.00	<<	<<
15.00	<<	<<
16.00	<<	<<
17.00	<<	<<
18.00	<<	<<
19.00	<<	<<
20.00	CALMA	0.00
21.00	CALMA	0.00
22.00	CALMA	0.00
23.00	CALMA	0.00
24.00	CALMA	0.00

ANDAMENTO VARIABILE VENTO 24-giu-15		
Ora	Velocità	Direzione
	m/s	Gradi
1.00	CALMA	0.00
2.00	0.07	<<
3.00	CALMA	0.00
4.00	CALMA	0.00
5.00	CALMA	0.00
6.00	CALMA	0.00
7.00	0.10	<<
8.00	0.12	<<
9.00	0.09	<<
10.00	0.06	<<
11.00	0.13	<<
12.00	0.10	<<
13.00	0.12	<<
14.00	0.43	244.18
15.00	0.07	<<
16.00	0.75	245.89
17.00	0.54	179.59
18.00	0.42	247.35
19.00	0.37	247.11
20.00	CALMA	0.00
21.00	CALMA	0.00
22.00	CALMA	0.00
23.00	CALMA	0.00
24.00	CALMA	0.00

ANDAMENTO VARIABILE VENTO 25-giu-15		
Ora	Velocità	Direzione
	m/s	Gradi
1.00	CALMA	0.00
2.00	CALMA	0.00
3.00	CALMA	0.00
4.00	CALMA	0.00
5.00	CALMA	0.00
6.00	CALMA	0.00
7.00	0.55	87.38
8.00	1.99	67.39
9.00	1.89	67.96
10.00	2.09	202.90
11.00	1.46	67.29
12.00	1.42	67.18
13.00	3.87	201.35
14.00	5.71	223.36
15.00	6.45	202.42
16.00	6.04	203.58
17.00	5.55	202.39
18.00	4.34	203.75
19.00	4.31	203.16
20.00	1.31	67.38
21.00	CALMA	0.00
22.00	CALMA	0.00
23.00	CALMA	0.00
24.00	CALMA	0.00

ANDAMENTO VARIABILE VENTO 26-giu-15		
Ora	Velocità	Direzione
	m/s	Gradi
1.00	CALMA	0.00
2.00	CALMA	0.00
3.00	CALMA	0.00
4.00	CALMA	0.00
5.00	CALMA	0.00
6.00	CALMA	0.00
7.00	0.19	<<
8.00	0.28	245.69
9.00	1.43	248.44
10.00	0.70	247.89
11.00	1.02	267.99
12.00	1.26	268.23
13.00	0.47	314.41
14.00	1.03	314.82
15.00	4.98	247.32
16.00	2.41	247.71
17.00	1.61	246.67
18.00	1.23	314.22
19.00	0.82	268.52
20.00	1.06	249.02
21.00	0.19	<<
22.00	0.54	246.27
23.00	1.01	249.43
24.00	0.96	248.08

AUTOSTRADA SALERNO-REGGIO CALABRIA Scheda di Monitoraggio Matrice Atmosfera

ANDAMENTO VARIABILE VENTO 27-giu-15		
Ora	Velocità	Direzione
	m/s	Gradi
1.00	0.67	267.93
2.00	0.69	337.67
3.00	0.67	335.42
4.00	0.16	<<
5.00	CALMA	0.00
6.00	CALMA	0.00
7.00	0.11	<<
8.00	0.26	68.17
9.00	0.27	67.60
10.00	0.16	<<
11.00	0.30	293.82
12.00	1.02	314.06
13.00	0.96	315.27
14.00	1.00	314.91
15.00	1.05	313.08
16.00	0.74	312.43
17.00	0.44	314.82
18.00	0.11	<<
19.00	0.11	<<
20.00	0.10	<<
21.00	CALMA	0.00
22.00	CALMA	0.00
23.00	CALMA	0.00
24.00	CALMA	0.00

ANDAMENTO VARIABILE VENTO 28-giu-15		
Ora	Velocità	Direzione
	m/s	Gradi
1.00	CALMA	0.00
2.00	CALMA	0.00
3.00	CALMA	0.00
4.00	CALMA	0.00
5.00	CALMA	0.00
6.00	CALMA	0.00
7.00	0.16	<<
8.00	0.25	<<
9.00	0.28	66.77
10.00	0.32	67.07
11.00	0.21	<<
12.00	0.21	<<
13.00	0.17	<<
14.00	0.53	314.96
15.00	0.37	312.71
16.00	0.07	<<
17.00	0.12	<<
18.00	0.12	<<
19.00	CALMA	0.00
20.00	CALMA	0.00
21.00	CALMA	0.00
22.00	CALMA	0.00
23.00	CALMA	0.00
24.00	CALMA	0.00

ANDAMENTO VARIABILE VENTO 29-giu-15		
Ora	Velocità	Direzione
	m/s	Gradi
1.00	CALMA	0.00
2.00	CALMA	0.00
3.00	CALMA	0.00
4.00	CALMA	0.00
5.00	CALMA	0.00
6.00	0.14	<<
7.00	0.12	<<
8.00	0.91	248.80
9.00	1.23	248.28
10.00	3.20	247.87
11.00	0.82	290.80
12.00	0.31	293.27
13.00	0.20	<<
14.00	0.31	44.72
15.00	0.60	295.45
16.00	0.65	21.70
17.00	0.64	65.05
18.00	0.29	339.65
19.00	CALMA	0.00
20.00	CALMA	0.00
21.00	CALMA	0.00
22.00	CALMA	0.00
23.00	CALMA	0.00
24.00	CALMA	0.00

ANDAMENTO VARIABILE VENTO 30-giu-15		
Ora	Velocità	Direzione
	m/s	Gradi
1.00	CALMA	0.00
2.00	CALMA	0.00
3.00	CALMA	0.00
4.00	CALMA	0.00
5.00	CALMA	0.00
6.00	CALMA	0.00
7.00	CALMA	0.00
8.00	0.33	88.06
9.00	0.20	<<
10.00	0.25	<<
11.00	0.38	65.93
12.00	0.26	311.88
13.00	0.07	<<
14.00	0.24	<<
15.00	0.34	313.35
16.00	0.62	293.11
17.00	0.22	<<
18.00	0.07	<<
19.00	CALMA	0.00
20.00	CALMA	0.00
21.00	CALMA	0.00
22.00	CALMA	0.00
23.00	CALMA	0.00
24.00	CALMA	0.00

AUTOSTRADA SALERNO-REGGIO CALABRIA Scheda di Monitoraggio Matrice Atmosfera

ANDAMENTO VARIABILE VENTO 01-lug-15		
Ora	Velocità	Direzione
	m/s	Gradi
1.00	CALMA	0.00
2.00	CALMA	0.00
3.00	CALMA	0.00
4.00	CALMA	0.00
5.00	CALMA	0.00
6.00	CALMA	0.00
7.00	0.22	<<
8.00	0.21	<<
9.00	0.09	<<
10.00	0.69	312.96
11.00	0.16	<<
12.00	0.12	<<
13.00	CALMA	<<
14.00	0.27	313.79
15.00	0.35	359.59
16.00	0.63	359.63
17.00	0.68	21.61
18.00	0.43	21.70
19.00	0.08	<<
20.00	CALMA	0.00
21.00	CALMA	0.00
22.00	CALMA	0.00
23.00	CALMA	0.00
24.00	CALMA	0.00

ANDAMENTO VARIABILE VENTO 02-lug-15		
Ora	Velocità	Direzione
	m/s	Gradi
1.00	CALMA	0.00
2.00	CALMA	0.00
3.00	CALMA	0.00
4.00	CALMA	0.00
5.00	CALMA	0.00
6.00	CALMA	0.00
7.00	CALMA	0.00
8.00	0.36	44.09
9.00	0.38	291.68
10.00	0.31	66.68
11.00	1.01	311.47
12.00	0.92	65.90
13.00	0.43	65.25
14.00	0.35	313.49
15.00	1.28	65.22
16.00	1.88	66.34
17.00	1.17	65.85
18.00	0.52	64.97
19.00	0.40	64.30
20.00	0.08	<<
21.00	0.09	<<
22.00	CALMA	0.00
23.00	CALMA	0.00
24.00	CALMA	0.00

ANDAMENTO VARIABILE VENTO 03-lug-15		
Ora	Velocità	Direzione
	m/s	Gradi
1.00	CALMA	0.00
2.00	CALMA	0.00
3.00	CALMA	0.00
4.00	CALMA	0.00
5.00	CALMA	0.00
6.00	CALMA	0.00
7.00	0.17	<<
8.00	0.24	<<
9.00	0.21	<<
10.00	0.17	<<
11.00	0.40	44.77
12.00	0.51	292.02
13.00	0.11	<<
14.00	0.24	<<
15.00	0.14	<<
16.00	0.19	<<
17.00	0.16	<<
18.00	0.06	<<
19.00	CALMA	0.00
20.00	CALMA	0.00
21.00	CALMA	0.00
22.00	CALMA	0.00
23.00	CALMA	0.00
24.00	CALMA	0.00

ANDAMENTO VARIABILE VENTO 04-lug-15		
Ora	Velocità	Direzione
	m/s	Gradi
1.00	CALMA	0.00
2.00	CALMA	0.00
3.00	CALMA	0.00
4.00	CALMA	0.00
5.00	CALMA	0.00
6.00	CALMA	0.00
7.00	0.06	<<
8.00	0.17	<<
9.00	0.08	<<
10.00	0.61	313.88
11.00	0.66	293.23
12.00	0.57	312.28
13.00	0.43	314.14
14.00	0.13	<<
15.00	0.37	43.85
16.00	0.31	44.27
17.00	CALMA	0.00
18.00	CALMA	0.00
19.00	CALMA	0.00
20.00	CALMA	0.00
21.00	CALMA	0.00
22.00	CALMA	0.00
23.00	CALMA	0.00
24.00	CALMA	0.00

AUTOSTRADA SALERNO-REGGIO CALABRIA Scheda di Monitoraggio Matrice Atmosfera

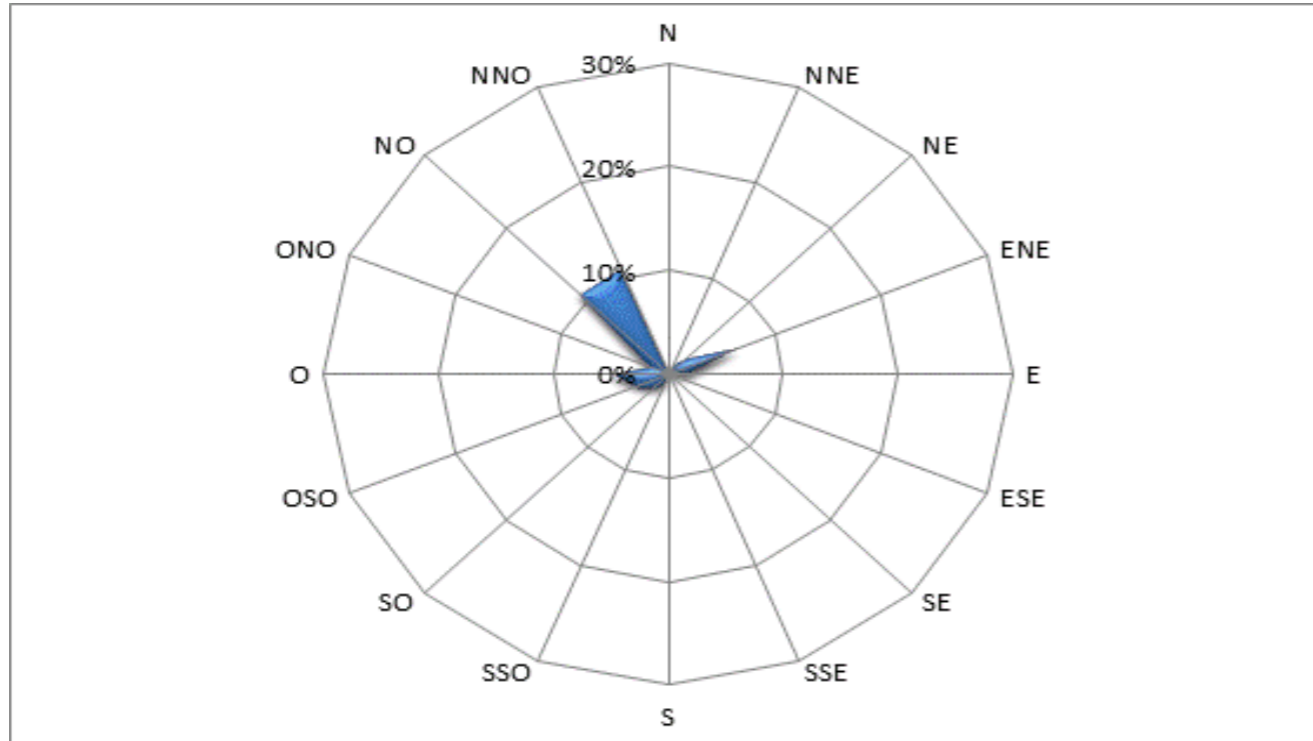
ANDAMENTO VARIABILE VENTO 05-lug-15		
Ora	Velocità	Direzione
	m/s	Gradi
1.00	CALMA	0.00
2.00	CALMA	0.00
3.00	CALMA	0.00
4.00	CALMA	0.00
5.00	CALMA	0.00
6.00	CALMA	0.00
7.00	CALMA	0.00
8.00	0.16	<<
9.00	0.16	<<
10.00	0.14	<<
11.00	0.36	292.38
12.00	0.35	269.46
13.00	0.34	312.74
14.00	0.39	316.77
15.00	0.49	44.31
16.00	0.10	<<
17.00	0.22	<<
18.00	0.09	<<
19.00	0.07	<<
20.00	CALMA	0.00
21.00	CALMA	0.00
22.00	CALMA	0.00
23.00	CALMA	0.00
24.00	CALMA	0.00

ANDAMENTO VARIABILE VENTO 06-lug-15		
Ora	Velocità	Direzione
	m/s	Gradi
1.00	CALMA	0.00
2.00	CALMA	0.00
3.00	CALMA	0.00
4.00	CALMA	0.00
5.00	CALMA	0.00
6.00	CALMA	0.00
7.00	CALMA	0.00
8.00	0.20	<<
9.00	0.64	292.54
10.00	0.37	45.42
11.00	0.26	314.31
12.00	0.18	<<
13.00	0.36	292.48
14.00	0.33	314.16
15.00	0.17	<<
16.00	0.26	314.23
17.00	0.32	64.82
18.00	CALMA	0.00
19.00	CALMA	0.00
20.00	CALMA	0.00
21.00	CALMA	0.00
22.00	CALMA	0.00
23.00	CALMA	0.00
24.00	CALMA	0.00

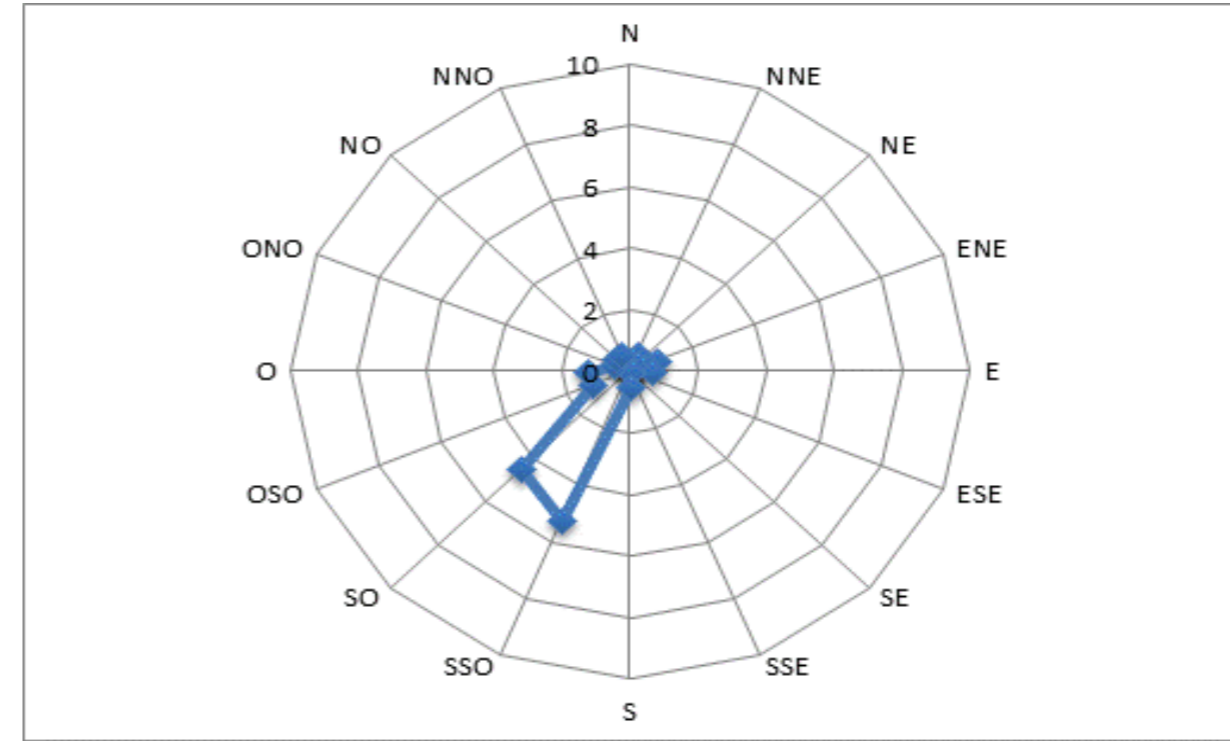
ANDAMENTO VARIABILE VENTO 07-lug-15		
Ora	Velocità	Direzione
	m/s	Gradi
1.00	CALMA	0.00
2.00	CALMA	0.00
3.00	CALMA	0.00
4.00	CALMA	0.00
5.00	CALMA	0.00
6.00	CALMA	0.00
7.00	CALMA	0.00
8.00	0.17	<<
9.00	0.45	295.27
10.00	0.22	<<
11.00	0.37	293.30
12.00	0.18	<<
13.00	0.17	<<
14.00	0.10	<<
15.00	0.26	335.67
16.00	0.41	315.13
17.00	0.24	<<
18.00	0.07	<<
19.00	CALMA	0.00
20.00	CALMA	0.00
21.00	CALMA	0.00
22.00	CALMA	0.00
23.00	CALMA	0.00
24.00	CALMA	0.00

AUTOSTRADA SALERNO-REGGIO CALABRIA Scheda di Monitoraggio Matrice Atmosfera

Direzione percentuale dei venti relativa all'intero periodo di riferimento (%)



Velocità media relativa all'intero periodo di riferimento (m/s)



AUTOSTRADA SALERNO-REGGIO CALABRIA Scheda di Monitoraggio Matrice Atmosfera

ANDAMENTO PARAMETRI METEOROLOGICI 23 GIUGNO 2015					
Ora	Temperatura	Pressione	Umidità Relativa	Radiazione Solare	Pioggia
	°C	mbar	%	W/m ²	mm
1.00	<<				
2.00	<<	<<	<<	<<	<<
3.00	<<	<<	<<	<<	<<
4.00	<<	<<	<<	<<	<<
5.00	<<	<<	<<	<<	<<
6.00	<<	<<	<<	<<	<<
7.00	<<	<<	<<	<<	<<
8.00	<<	<<	<<	<<	<<
9.00	<<	<<	<<	<<	<<
10.00	<<	<<	<<	<<	<<
11.00	<<	<<	<<	<<	<<
12.00	<<	<<	<<	<<	<<
13.00	<<	<<	<<	<<	<<
14.00	<<	<<	<<	<<	<<
15.00	<<	<<	<<	<<	<<
16.00	<<	<<	<<	<<	<<
17.00	<<	<<	<<	<<	<<
18.00	<<	<<	<<	<<	<<
19.00	<<	<<	<<	<<	<<
20.00	23.74	1000.53	57.54	7.25	0.00
21.00	22.95	1000.74	53.86	0.00	0.00
22.00	22.76	1000.75	56.29	0.00	0.00
23.00	22.13	1000.60	57.72	0.00	0.00
24.00	22.21	1000.40	54.70	0.00	0.00

ANDAMENTO PARAMETRI METEOROLOGICI 24 GIUGNO 2015					
Ora	Temperatura	Pressione	Umidità Relativa	Radiazione Solare	Pioggia
	°C	mbar	%	W/m ²	mm
1.00	22.54	1000.27	56.49	0.00	0.00
2.00	23.86	1000.13	48.38	0.00	0.00
3.00	22.57	1000.29	58.47	0.00	0.00
4.00	21.78	1000.34	68.32	0.00	0.00
5.00	21.70	1000.42	59.45	3.63	0.00
6.00	22.97	1000.27	54.24	84.98	0.00
7.00	25.75	1000.44	50.42	248.75	0.00
8.00	25.60	1000.97	55.84	296.27	0.00
9.00	26.40	1001.00	52.23	392.74	0.00
10.00	26.58	1000.95	53.60	239.97	0.00
11.00	26.27	1001.12	53.86	176.89	0.00
12.00	27.45	1000.95	51.47	260.83	0.00
13.00	26.70	1001.02	56.02	193.69	0.00
14.00	25.59	1001.23	60.05	143.29	0.00
15.00	25.89	1001.45	57.42	99.79	0.00
16.00	25.50	1001.13	58.91	446.78	0.00
17.00	29.09	1001.19	45.64	502.07	0.00
18.00	28.04	1001.30	47.38	310.04	0.00
19.00	26.24	1002.06	58.57	126.52	0.00
20.00	24.37	1002.52	65.70	7.29	0.00
21.00	22.97	1003.07	64.53	0.00	0.00
22.00	22.08	1003.56	64.00	0.00	0.00
23.00	21.77	1003.94	66.60	0.00	0.00
24.00	21.58	1004.01	78.94	0.00	0.00

AUTOSTRADA SALERNO-REGGIO CALABRIA Scheda di Monitoraggio Matrice Atmosfera**ANDAMENTO PARAMETRI METEOROLOGICI**

25 GIUGNO 2015

Ora	Temperatura	Pressione	Umidità Relativa	Radiazione Solare	Pioggia
	°C	mbar	%	W/m ²	mm
1.00	21.31	1003.81	82.45	0.00	0.00
2.00	21.01	1003.90	82.86	0.00	0.00
3.00	21.25	1003.85	83.92	0.00	0.00
4.00	20.72	1003.81	83.31	0.00	0.00
5.00	20.19	1003.91	81.16	3.05	0.00
6.00	21.18	1004.37	74.95	75.06	0.00
7.00	23.87	1004.00	66.69	271.24	0.00
8.00	24.57	1004.21	68.42	465.03	0.00
9.00	25.46	1004.27	66.29	646.32	0.00
10.00	26.44	1004.04	61.07	801.32	0.00
11.00	26.92	1004.15	63.09	911.82	0.00
12.00	27.02	1004.08	60.21	973.22	0.00
13.00	27.69	1003.74	55.34	977.75	0.00
14.00	27.24	1003.43	55.75	925.33	0.00
15.00	26.81	1003.30	55.79	811.50	0.00
16.00	26.43	1003.18	57.02	662.72	0.00
17.00	25.92	1003.09	58.28	478.28	0.00
18.00	25.59	1002.90	59.37	282.51	0.00
19.00	24.22	1003.01	63.40	116.87	0.00
20.00	22.88	1003.07	67.50	6.24	0.00
21.00	22.44	1003.55	68.56	0.00	0.00
22.00	21.81	1004.02	71.98	0.00	0.00
23.00	21.52	1003.90	74.49	0.00	0.00
24.00	22.31	1003.78	74.68	0.00	0.00

ANDAMENTO PARAMETRI METEOROLOGICI

26 GIUGNO 2015

Ora	Temperatura	Pressione	Umidità Relativa	Radiazione Solare	Pioggia
	°C	mbar	%	W/m ²	mm
1.00	22.82	1003.51	73.66	0.00	0.00
2.00	22.54	1003.02	74.78	0.00	0.00
3.00	22.17	1002.58	74.84	0.00	0.00
4.00	21.81	1002.41	76.10	0.00	0.00
5.00	21.76	1002.29	77.08	2.80	0.00
6.00	21.97	1002.42	78.17	26.43	0.00
7.00	22.95	1002.53	76.20	154.28	0.00
8.00	24.06	1002.69	73.49	373.33	0.00
9.00	23.38	1002.74	72.79	168.50	0.00
10.00	22.91	1002.66	76.22	147.72	0.00
11.00	22.88	1002.77	79.17	280.06	0.00
12.00	23.98	1002.56	74.90	430.93	0.00
13.00	24.67	1002.35	69.82	358.77	0.00
14.00	24.54	1002.03	71.02	458.45	0.00
15.00	25.53	1001.77	69.90	872.54	0.00
16.00	24.91	1001.62	72.22	364.07	0.00
17.00	24.58	1001.57	67.09	205.20	0.00
18.00	25.08	1001.71	56.76	312.66	0.00
19.00	24.77	1001.99	59.20	168.24	0.00
20.00	23.50	1001.95	62.49	17.54	0.00
21.00	22.93	1002.28	67.27	0.00	0.00
22.00	22.78	1002.65	66.94	0.00	0.00
23.00	22.89	1002.63	68.93	0.00	0.00
24.00	22.73	1002.11	74.68	0.00	0.00

AUTOSTRADA SALERNO-REGGIO CALABRIA Scheda di Monitoraggio Matrice Atmosfera**ANDAMENTO PARAMETRI METEOROLOGICI**

27 GIUGNO 2015

Ora	Temperatura	Pressione	Umidità Relativa	Radiazione Solare	Pioggia
	°C	mbar	%	W/m ²	mm
1.00	22.65	1001.87	69.63	0.00	0.00
2.00	22.55	1001.80	63.74	0.00	0.00
3.00	22.41	1001.60	58.38	0.00	0.00
4.00	22.29	1001.62	56.08	0.00	0.00
5.00	21.44	1001.74	60.09	2.60	0.00
6.00	21.79	1001.95	60.90	93.35	0.00
7.00	24.28	1002.20	55.16	275.59	0.00
8.00	24.80	1002.41	51.89	468.75	0.00
9.00	24.75	1002.46	52.32	651.95	0.00
10.00	25.37	1002.66	50.98	809.57	0.00
11.00	25.64	1002.97	49.50	923.23	0.00
12.00	25.68	1002.84	51.85	991.11	0.00
13.00	25.68	1002.88	52.42	1001.96	0.00
14.00	25.91	1002.82	52.34	954.59	0.00
15.00	25.96	1002.71	52.27	844.45	0.00
16.00	25.99	1002.67	53.87	701.01	0.00
17.00	25.84	1002.53	53.51	518.86	0.00
18.00	25.79	1002.50	52.71	321.43	0.00
19.00	24.80	1002.46	55.57	138.69	0.00
20.00	22.94	1002.58	62.37	7.29	0.00
21.00	22.73	1003.12	65.49	0.00	0.00
22.00	21.83	1003.49	68.71	0.00	0.00
23.00	21.39	1003.43	69.58	0.00	0.00
24.00	20.85	1003.14	71.37	0.00	0.00

ANDAMENTO PARAMETRI METEOROLOGICI

28 GIUGNO 2015

Ora	Temperatura	Pressione	Umidità Relativa	Radiazione Solare	Pioggia
	°C	mbar	%	W/m ²	mm
1.00	20.61	1003.01	72.09	0.00	0.00
2.00	20.80	1002.93	72.42	0.00	0.00
3.00	20.69	1002.46	73.17	0.00	0.00
4.00	20.30	1002.53	74.34	0.00	0.00
5.00	20.13	1002.42	76.22	3.25	0.00
6.00	20.69	1002.42	77.25	65.23	0.00
7.00	23.47	1002.63	69.42	269.14	0.00
8.00	24.35	1002.82	66.10	427.46	0.00
9.00	25.12	1002.93	63.48	616.78	0.00
10.00	25.51	1002.97	62.89	782.95	0.00
11.00	25.36	1003.10	64.44	889.17	0.00
12.00	25.28	1003.03	65.41	798.47	0.00
13.00	26.09	1002.99	60.73	1034.45	0.00
14.00	26.43	1002.92	56.60	668.04	0.00
15.00	26.13	1002.24	57.82	865.38	0.00
16.00	26.24	1002.03	56.41	498.36	0.00
17.00	26.53	1001.75	48.58	402.50	0.00
18.00	27.05	1001.96	49.78	273.30	0.00
19.00	24.84	1002.26	59.61	62.76	0.00
20.00	23.20	1002.51	65.31	5.75	0.00
21.00	22.15	1003.15	71.77	0.00	0.00
22.00	21.80	1003.44	73.07	0.00	0.00
23.00	21.62	1003.59	76.19	0.00	0.00
24.00	21.72	1003.50	76.46	0.00	0.00

AUTOSTRADA SALERNO-REGGIO CALABRIA *Scheda di Monitoraggio Matrice Atmosfera*

ANDAMENTO PARAMETRI METEOROLOGICI					
29 GIUGNO 2015					
Ora	Temperatura	Pressione	Umidità Relativa	Radiazione Solare	Pioggia
	°C	mbar	%	W/m²	mm
1.00	21.10	1003.57	76.99	0.00	0.00
2.00	21.36	1003.70	78.58	0.00	0.00
3.00	22.11	1003.54	78.50	0.00	0.00
4.00	22.18	1003.52	79.98	0.00	0.00
5.00	22.20	1003.62	81.54	1.45	0.00
6.00	22.26	1003.75	82.00	11.14	0.00
7.00	22.59	1004.14	81.20	73.79	0.00
8.00	23.03	1004.65	78.72	92.57	0.00
9.00	23.07	1005.02	78.60	134.67	0.00
10.00	24.51	1005.28	75.65	650.92	0.00
11.00	24.50	1005.48	77.22	315.03	0.00
12.00	24.74	1005.66	76.06	546.20	0.00
13.00	25.55	1005.47	72.77	731.10	0.00
14.00	25.52	1005.05	71.47	754.14	0.00
15.00	26.13	1005.00	67.05	867.68	0.00
16.00	26.06	1005.10	69.22	728.05	0.00
17.00	25.94	1005.18	67.11	525.78	0.00
18.00	25.74	1004.97	62.62	318.37	0.00
19.00	24.89	1005.14	66.67	72.55	0.00
20.00	23.08	1005.23	65.61	12.75	0.00
21.00	22.18	1005.59	58.75	0.00	0.00
22.00	21.58	1006.12	61.70	0.00	0.00
23.00	21.26	1006.40	62.45	0.00	0.00
24.00	21.00	1006.44	69.42	0.00	0.00

ANDAMENTO PARAMETRI METEOROLOGICI					
30 GIUGNO 2015					
Ora	Temperatura	Pressione	Umidità Relativa	Radiazione Solare	Pioggia
	°C	mbar	%	W/m²	mm
1.00	20.74	1006.20	64.97	0.00	0.00
2.00	20.55	1005.81	72.66	0.00	0.00
3.00	20.56	1005.41	80.01	0.00	0.00
4.00	20.13	1005.00	70.03	0.00	0.00
5.00	20.07	1004.75	66.71	2.24	0.00
6.00	20.60	1005.07	72.08	43.69	0.00
7.00	22.30	1005.45	70.60	173.07	0.00
8.00	24.56	1005.70	61.26	353.76	0.00
9.00	25.16	1005.92	59.12	565.41	0.00
10.00	25.87	1006.14	57.53	651.28	0.00
11.00	26.77	1006.42	53.22	887.28	0.00
12.00	26.75	1006.39	54.95	964.92	0.00
13.00	27.22	1006.20	57.76	979.73	0.00
14.00	27.52	1005.95	52.06	951.17	0.00
15.00	27.67	1005.60	56.14	837.25	0.00
16.00	26.96	1005.37	61.06	692.03	0.00
17.00	27.30	1005.12	58.92	491.34	0.00
18.00	27.03	1004.78	60.25	281.76	0.00
19.00	25.84	1004.93	65.26	134.87	0.00
20.00	23.79	1005.29	65.34	10.10	0.00
21.00	22.19	1005.73	65.87	0.00	0.00
22.00	21.77	1006.14	66.82	0.00	0.00
23.00	22.16	1006.53	76.53	0.00	0.00
24.00	22.28	1006.52	81.67	0.00	0.00

AUTOSTRADA SALERNO-REGGIO CALABRIA *Scheda di Monitoraggio Matrice Atmosfera*

ANDAMENTO PARAMETRI METEOROLOGICI 01 LUGLIO 2015					
Ora	Temperatura	Pressione	Umidità Relativa	Radiazione Solare	Pioggia
	°C	mbar	%	W/m ²	mm
1.00	21.18	1006.03	79.99	0.00	0.00
2.00	21.11	1005.76	82.43	0.00	0.00
3.00	21.00	1005.54	82.30	0.00	0.00
4.00	21.01	1005.53	82.32	0.00	0.00
5.00	21.29	1005.65	82.91	2.98	0.00
6.00	21.85	1005.75	81.99	72.58	0.00
7.00	24.18	1005.94	73.46	262.38	0.00
8.00	25.38	1006.28	67.77	442.56	0.00
9.00	25.84	1006.61	65.74	618.81	0.00
10.00	25.82	1006.66	67.71	785.05	0.00
11.00	26.15	1006.75	67.74	906.60	0.00
12.00	26.38	1006.75	66.88	975.97	0.00
13.00	27.07	1006.37	62.23	996.10	0.00
14.00	27.18	1006.06	62.29	951.68	0.00
15.00	27.44	1005.88	61.57	846.78	0.00
16.00	27.59	1005.81	61.53	700.76	0.00
17.00	27.47	1005.78	62.94	524.29	0.00
18.00	27.28	1005.80	64.19	327.98	0.00
19.00	25.84	1005.93	68.56	141.80	0.00
20.00	23.22	1006.17	67.33	9.65	0.00
21.00	22.17	1006.83	58.88	0.00	0.00
22.00	22.05	1007.23	60.19	0.00	0.00
23.00	21.93	1007.32	56.21	0.00	0.00
24.00	21.73	1007.29	56.83	0.00	0.00

ANDAMENTO PARAMETRI METEOROLOGICI 02 LUGLIO 2015					
Ora	Temperatura	Pressione	Umidità Relativa	Radiazione Solare	Pioggia
	°C	mbar	%	W/m ²	mm
1.00	21.45	1007.43	68.95	0.00	0.00
2.00	21.03	1007.26	73.65	0.00	0.00
3.00	20.99	1007.02	65.15	0.00	0.00
4.00	20.89	1006.91	63.70	0.00	0.00
5.00	20.65	1007.06	66.35	2.51	0.00
6.00	21.19	1007.24	66.21	69.97	0.00
7.00	23.93	1007.50	63.30	265.20	0.00
8.00	26.03	1007.84	63.91	452.76	0.00
9.00	25.78	1008.04	67.19	635.54	0.00
10.00	26.69	1008.09	61.71	790.57	0.00
11.00	27.11	1008.17	58.73	907.68	0.00
12.00	26.73	1008.14	60.31	974.14	0.00
13.00	27.62	1008.04	53.84	983.70	0.00
14.00	28.45	1007.96	51.04	927.27	0.00
15.00	28.16	1007.76	54.12	832.48	0.00
16.00	27.21	1007.57	56.49	693.27	0.00
17.00	27.43	1007.33	55.60	510.44	0.00
18.00	26.76	1007.57	58.04	314.93	0.00
19.00	25.69	1007.74	64.71	126.05	0.00
20.00	25.66	1007.91	47.75	7.19	0.00
21.00	25.07	1008.35	45.65	0.00	0.00
22.00	24.38	1008.70	45.73	0.00	0.00
23.00	23.98	1008.91	46.90	0.00	0.00
24.00	22.69	1009.17	53.48	0.00	0.00

AUTOSTRADA SALERNO-REGGIO CALABRIA Scheda di Monitoraggio Matrice Atmosfera

ANDAMENTO PARAMETRI METEOROLOGICI					
03 LUGLIO 2015					
Ora	Temperatura	Pressione	Umidità Relativa	Radiazione Solare	Pioggia
	°C	mbar	%	W/m ²	mm
1.00	22.22	1009.22	62.34	0.00	0.00
2.00	22.13	1008.93	60.63	0.00	0.00
3.00	21.91	1008.74	64.03	0.00	0.00
4.00	21.46	1008.54	68.21	0.00	0.00
5.00	21.30	1008.71	74.88	2.31	0.00
6.00	22.02	1008.86	76.66	64.53	0.00
7.00	24.26	1008.99	71.67	246.20	0.00
8.00	25.74	1009.20	67.71	439.55	0.00
9.00	25.91	1009.33	67.00	622.99	0.00
10.00	26.31	1009.43	66.41	781.90	0.00
11.00	26.63	1009.54	66.86	898.03	0.00
12.00	26.17	1009.48	68.39	971.46	0.00
13.00	27.38	1009.14	56.52	989.07	0.00
14.00	28.27	1008.83	49.71	945.01	0.00
15.00	29.08	1008.56	42.48	843.55	0.00
16.00	29.50	1008.46	42.87	695.40	0.00
17.00	28.34	1008.47	52.97	512.78	0.00
18.00	27.85	1008.26	59.69	311.58	0.00
19.00	26.89	1008.28	67.44	127.00	0.00
20.00	24.32	1008.41	67.99	7.61	0.00
21.00	23.07	1009.03	71.08	0.00	0.00
22.00	23.08	1009.34	65.85	0.00	0.00
23.00	23.08	1009.07	55.33	0.00	0.00
24.00	22.79	1009.00	53.77	0.00	0.00

ANDAMENTO PARAMETRI METEOROLOGICI					
04 LUGLIO 2015					
Ora	Temperatura	Pressione	Umidità Relativa	Radiazione Solare	Pioggia
	°C	mbar	%	W/m ²	mm
1.00	22.28	1008.79	62.00	0.00	0.00
2.00	21.90	1008.39	65.45	0.00	0.00
3.00	21.73	1008.08	69.77	0.00	0.00
4.00	21.62	1007.93	76.29	0.00	0.00
5.00	21.51	1007.92	79.38	2.07	0.00
6.00	22.29	1007.89	80.25	63.54	0.00
7.00	24.53	1007.93	73.14	241.89	0.00
8.00	25.71	1007.95	70.32	427.85	0.00
9.00	26.51	1008.05	69.04	579.35	0.00
10.00	26.25	1008.09	72.34	761.79	0.00
11.00	26.32	1007.76	71.02	876.54	0.00
12.00	26.87	1007.53	69.99	943.98	0.00
13.00	26.26	1007.15	70.89	965.69	0.00
14.00	27.48	1007.15	63.90	927.27	0.00
15.00	28.83	1006.97	47.48	810.88	0.00
16.00	28.76	1007.01	46.53	602.11	0.00
17.00	28.20	1006.69	52.35	319.75	0.00
18.00	27.92	1006.51	57.47	320.24	0.00
19.00	26.43	1006.33	64.85	113.81	0.00
20.00	25.27	1006.25	63.00	9.33	0.00
21.00	24.74	1006.19	61.02	0.00	0.00
22.00	24.06	1006.44	61.41	0.00	0.00
23.00	23.47	1006.50	62.64	0.00	0.00
24.00	23.14	1006.45	71.21	0.00	0.00

AUTOSTRADA SALERNO-REGGIO CALABRIA *Scheda di Monitoraggio Matrice Atmosfera*

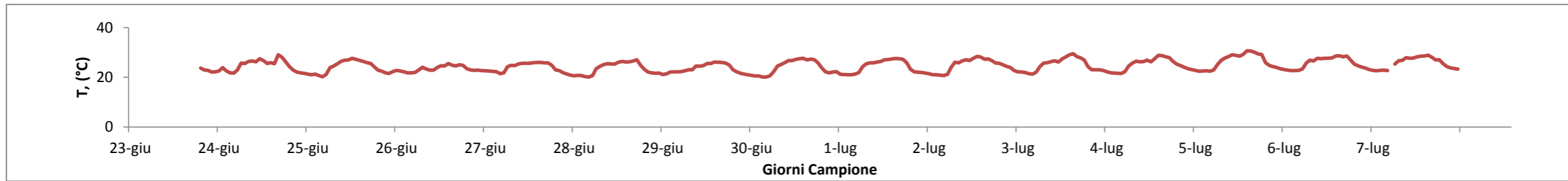
ANDAMENTO PARAMETRI METEOROLOGICI					
05 LUGLIO 2015					
Ora	Temperatura	Pressione	Umidità Relativa	Radiazione Solare	Pioggia
	°C	mbar	%	W/m ²	mm
1.00	22.77	1006.23	70.36	0.00	0.00
2.00	22.49	1006.00	73.27	0.00	0.00
3.00	22.54	1005.66	61.91	0.00	0.00
4.00	22.59	1005.54	60.07	0.00	0.00
5.00	22.46	1005.62	62.77	2.11	0.00
6.00	22.94	1005.72	66.05	59.92	0.00
7.00	25.15	1005.89	63.20	217.92	0.00
8.00	26.78	1005.98	57.97	377.52	0.00
9.00	27.74	1006.11	60.74	593.20	0.00
10.00	28.33	1006.08	56.84	759.79	0.00
11.00	29.06	1006.31	44.93	883.28	0.00
12.00	28.80	1006.47	49.59	962.89	0.00
13.00	28.48	1006.52	62.17	963.57	0.00
14.00	29.25	1006.27	48.20	910.97	0.00
15.00	30.70	1005.92	36.61	812.57	0.00
16.00	30.57	1005.68	41.43	674.95	0.00
17.00	30.05	1005.25	42.98	481.40	0.00
18.00	29.44	1004.91	49.55	301.78	0.00
19.00	29.18	1005.00	47.55	121.74	0.00
20.00	25.91	1005.24	52.69	7.97	0.00
21.00	24.83	1005.40	51.66	0.00	0.00
22.00	24.32	1005.79	52.65	0.00	0.00
23.00	23.93	1005.95	52.73	0.00	0.00
24.00	23.48	1006.05	56.36	0.00	0.00

ANDAMENTO PARAMETRI METEOROLOGICI					
06 LUGLIO 2015					
Ora	Temperatura	Pressione	Umidità Relativa	Radiazione Solare	Pioggia
	°C	mbar	%	W/m ²	mm
1.00	23.14	1005.98	61.87	0.00	0.00
2.00	22.89	1005.88	70.19	0.00	0.00
3.00	22.69	1005.58	74.97	0.00	0.00
4.00	22.74	1005.43	77.76	0.00	0.00
5.00	22.83	1005.50	79.30	2.15	0.00
6.00	23.41	1005.66	79.24	65.11	0.00
7.00	25.73	1005.94	72.22	257.84	0.00
8.00	26.87	1006.11	68.09	379.19	0.00
9.00	26.56	1006.41	70.03	532.70	0.00
10.00	27.62	1006.44	68.06	611.83	0.00
11.00	27.53	1006.39	69.21	750.74	0.00
12.00	27.63	1006.09	69.12	964.81	0.00
13.00	27.63	1006.01	68.00	974.86	0.00
14.00	27.80	1005.79	68.50	935.85	0.00
15.00	28.56	1005.40	64.41	836.04	0.00
16.00	28.68	1005.33	61.56	683.38	0.00
17.00	28.25	1005.03	64.84	500.13	0.00
18.00	28.62	1004.72	63.20	305.36	0.00
19.00	26.95	1004.91	69.80	119.20	0.00
20.00	25.32	1004.96	70.20	7.10	0.00
21.00	24.65	1005.09	58.43	0.00	0.00
22.00	24.12	1005.09	59.91	0.00	0.00
23.00	23.73	1004.87	58.32	0.00	0.00
24.00	23.15	1004.81	64.80	0.00	0.00

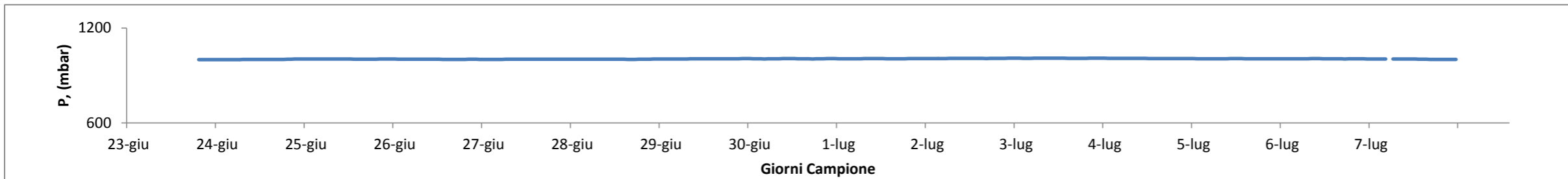
AUTOSTRADA SALERNO-REGGIO CALABRIA Scheda di Monitoraggio Matrice Atmosfera

ANDAMENTO PARAMETRI METEOROLOGICI					
07 LUGLIO 2015					
Ora	Temperatura	Pressione	Umidità Relativa	Radiazione Solare	Pioggia
	°C	mbar	%	W/m ²	mm
1.00	22.76	1004.60	70.97	0.00	0.00
2.00	22.66	1004.47	76.86	0.00	0.00
3.00	22.78	1004.37	81.83	0.00	0.00
4.00	22.86	1004.17	83.05	0.00	0.00
5.00	22.73	1004.24	83.73	1.90	0.00
6.00	<<	<<	<<	<<	<<
7.00	25.31	1004.64	72.74	248.80	0.00
8.00	26.66	1004.64	69.49	437.25	0.00
9.00	26.85	1004.31	68.29	622.39	0.00
10.00	27.90	1004.16	63.53	778.98	0.00
11.00	27.62	1003.97	63.64	883.14	0.00
12.00	27.75	1003.81	65.19	941.04	0.00
13.00	28.25	1003.55	61.87	960.24	0.00
14.00	28.50	1003.19	62.93	915.49	0.00
15.00	28.54	1002.69	63.45	814.63	0.00
16.00	28.90	1002.35	65.85	677.22	0.00
17.00	28.07	1002.07	70.05	504.22	0.00
18.00	26.97	1001.68	72.67	309.93	0.00
19.00	27.08	1001.57	72.47	132.37	0.00
20.00	25.48	1001.50	58.42	8.22	0.00
21.00	24.37	1001.79	64.85	0.00	0.00
22.00	23.83	1001.67	65.60	0.00	0.00
23.00	23.56	1001.36	66.46	0.00	0.00
24.00	23.26	1001.42	70.96	0.00	0.00

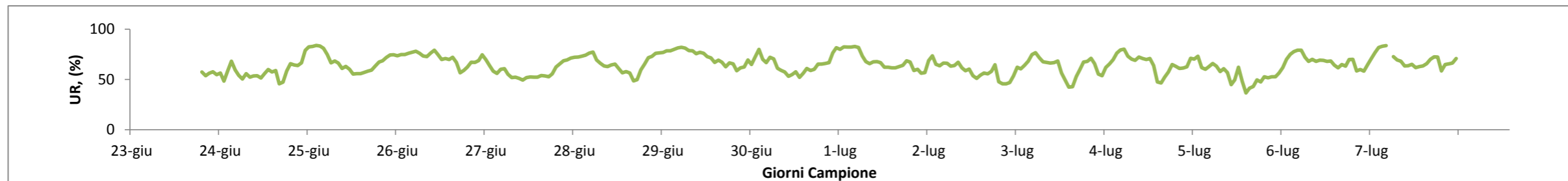
AUTOSTRADA SALERNO-REGGIO CALABRIA Scheda di Monitoraggio Matrice Atmosfera



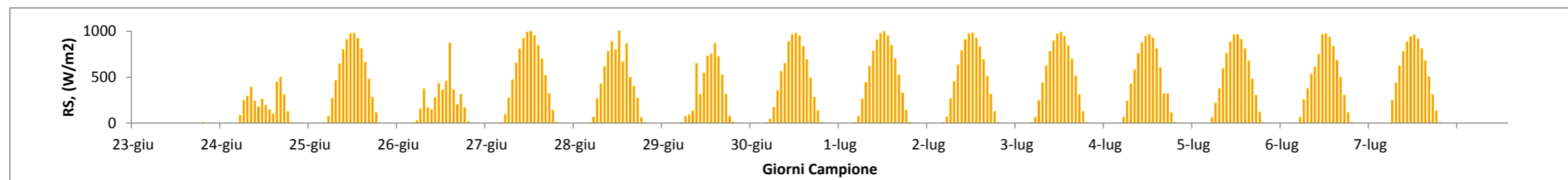
T=Temperatura espressa in °C



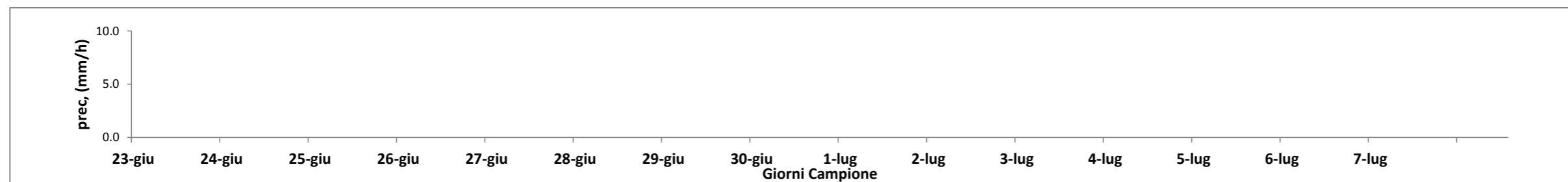
P=Pressione espressa in mbar



UR=Umidità Relativa espressa in percentuale



RS=Radiazione Solare Espressa in W/m²



prec=Precipitazione Espressa in mm/h