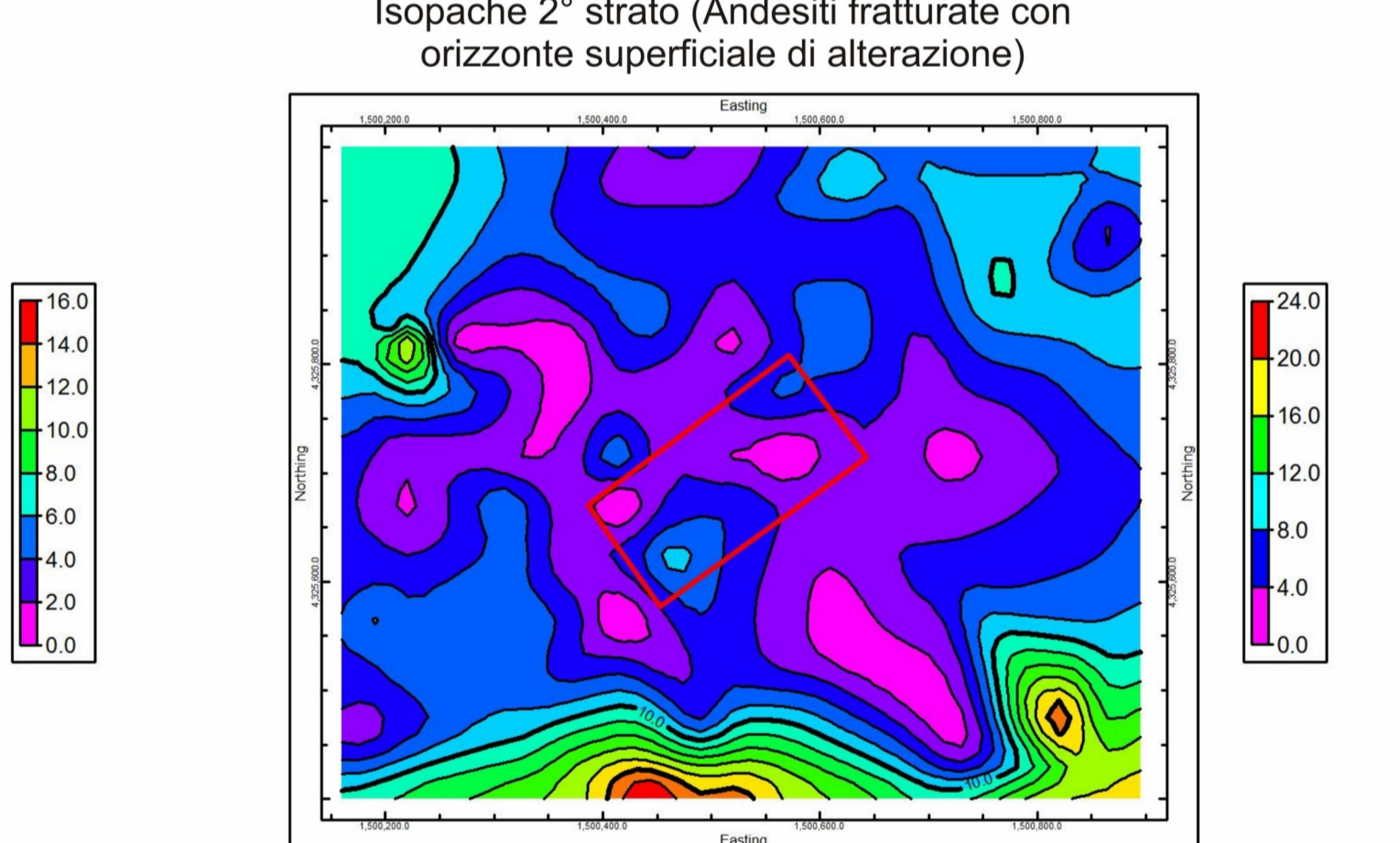
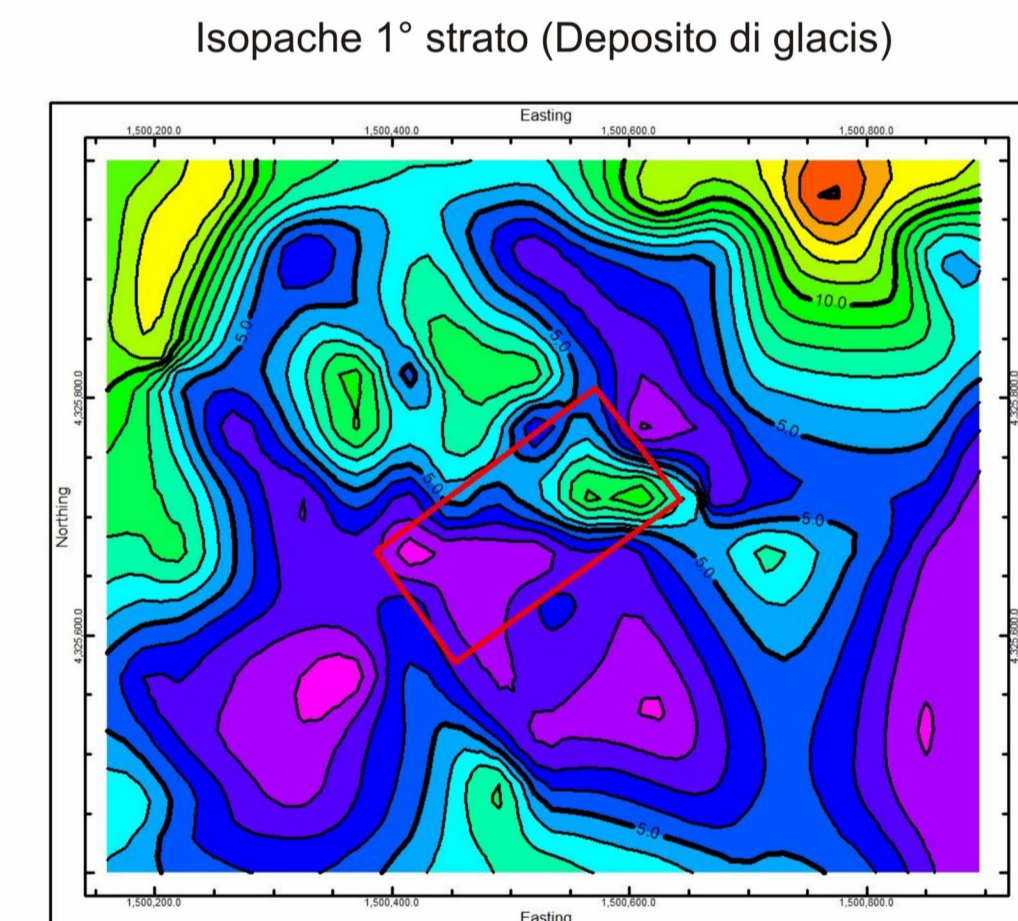
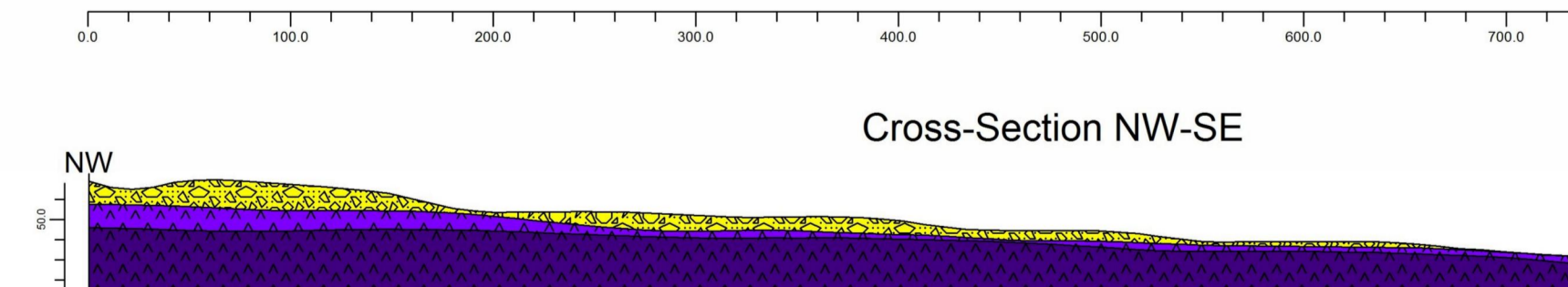
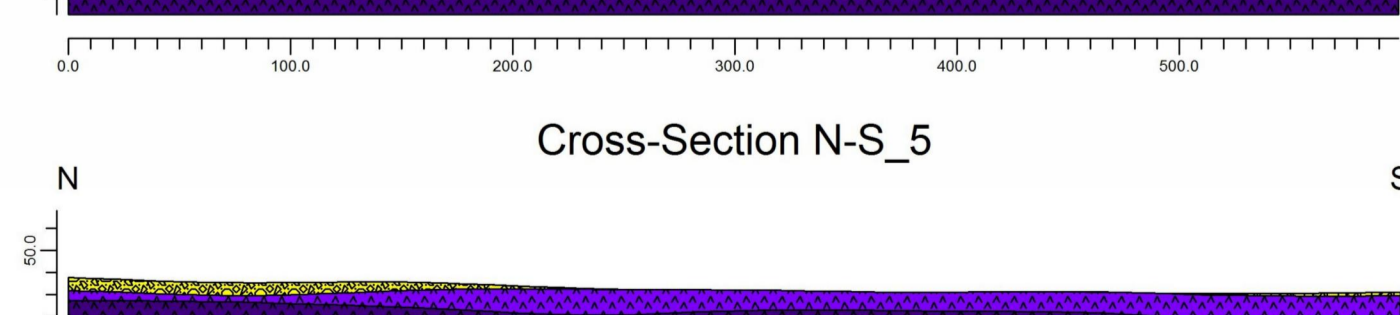
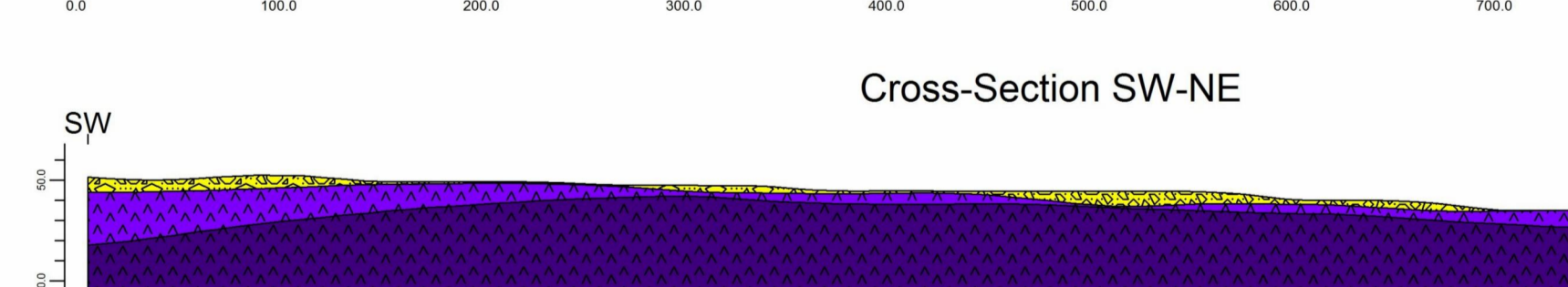
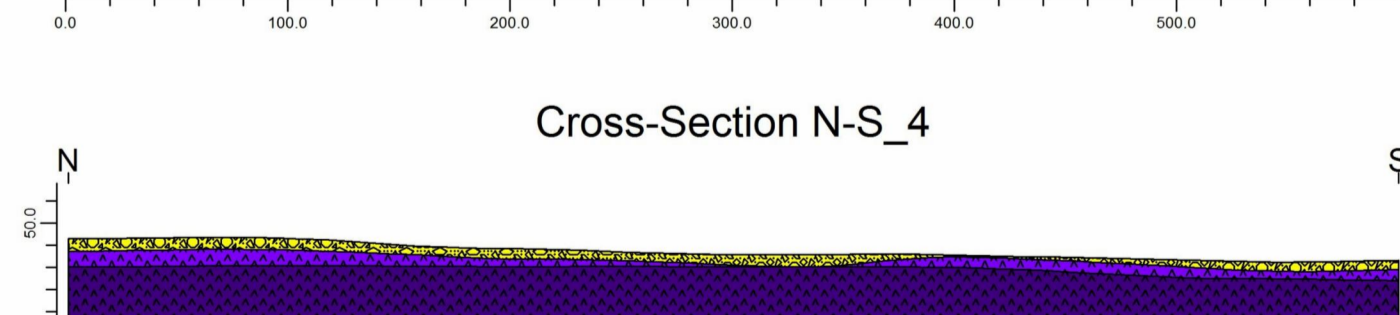
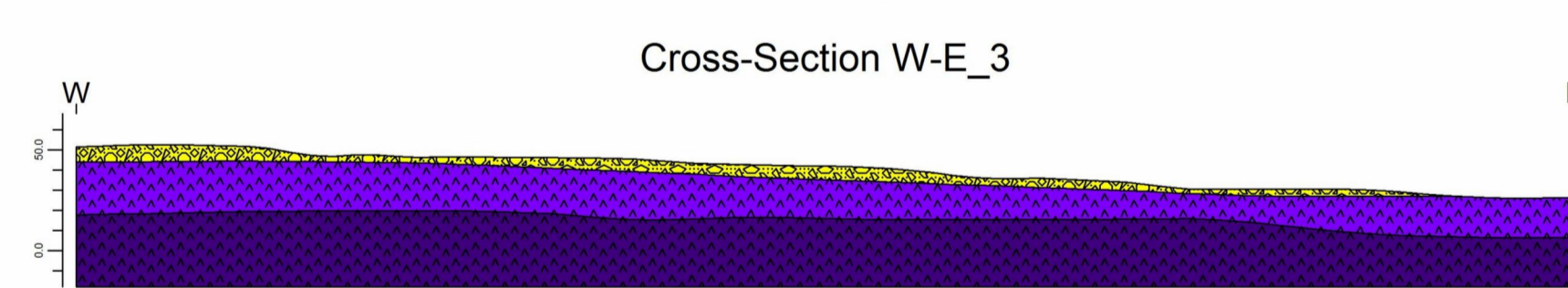
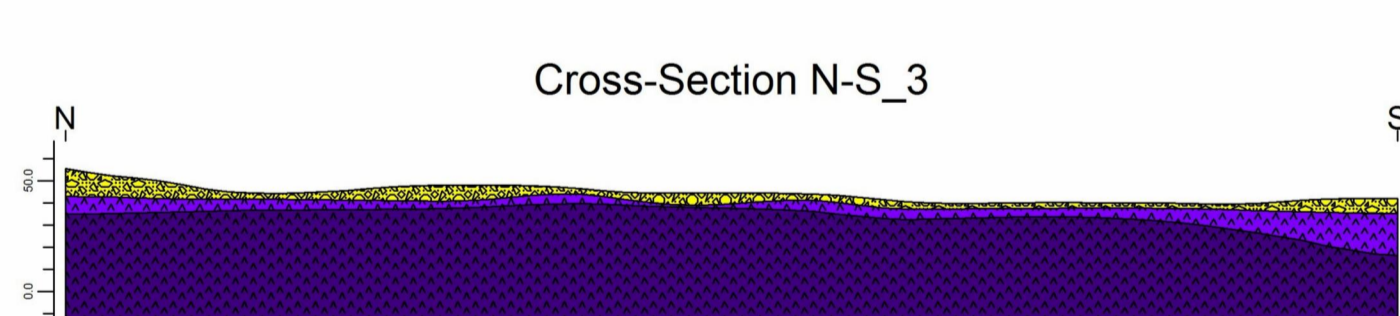
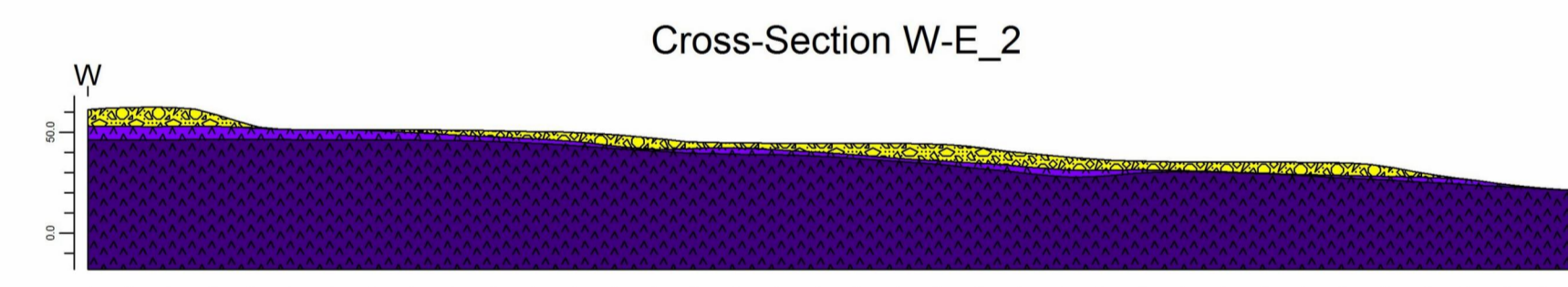
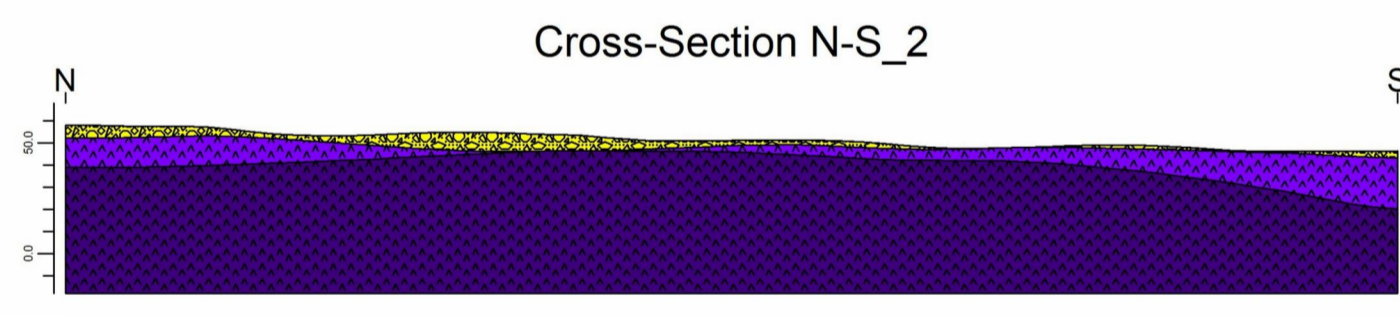
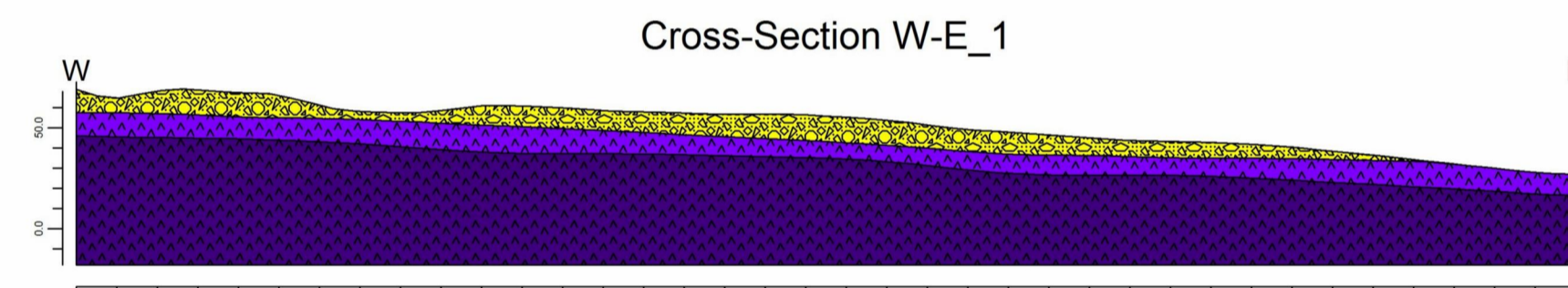
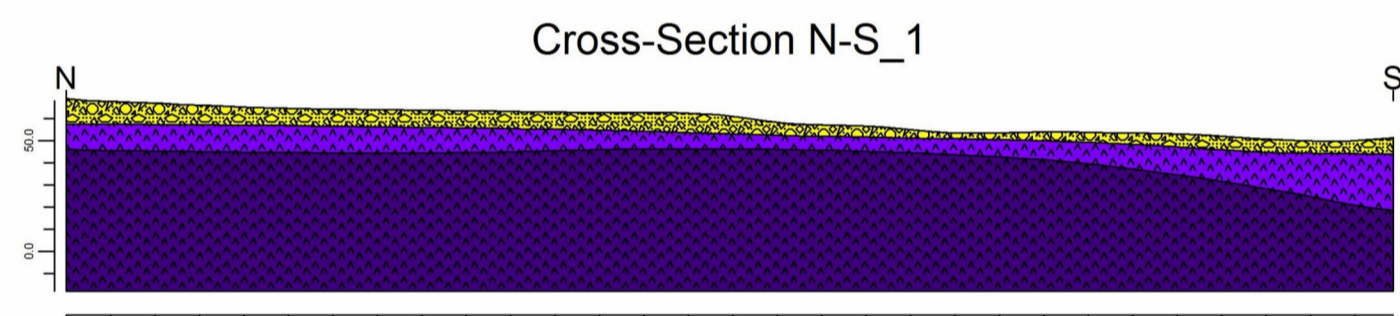
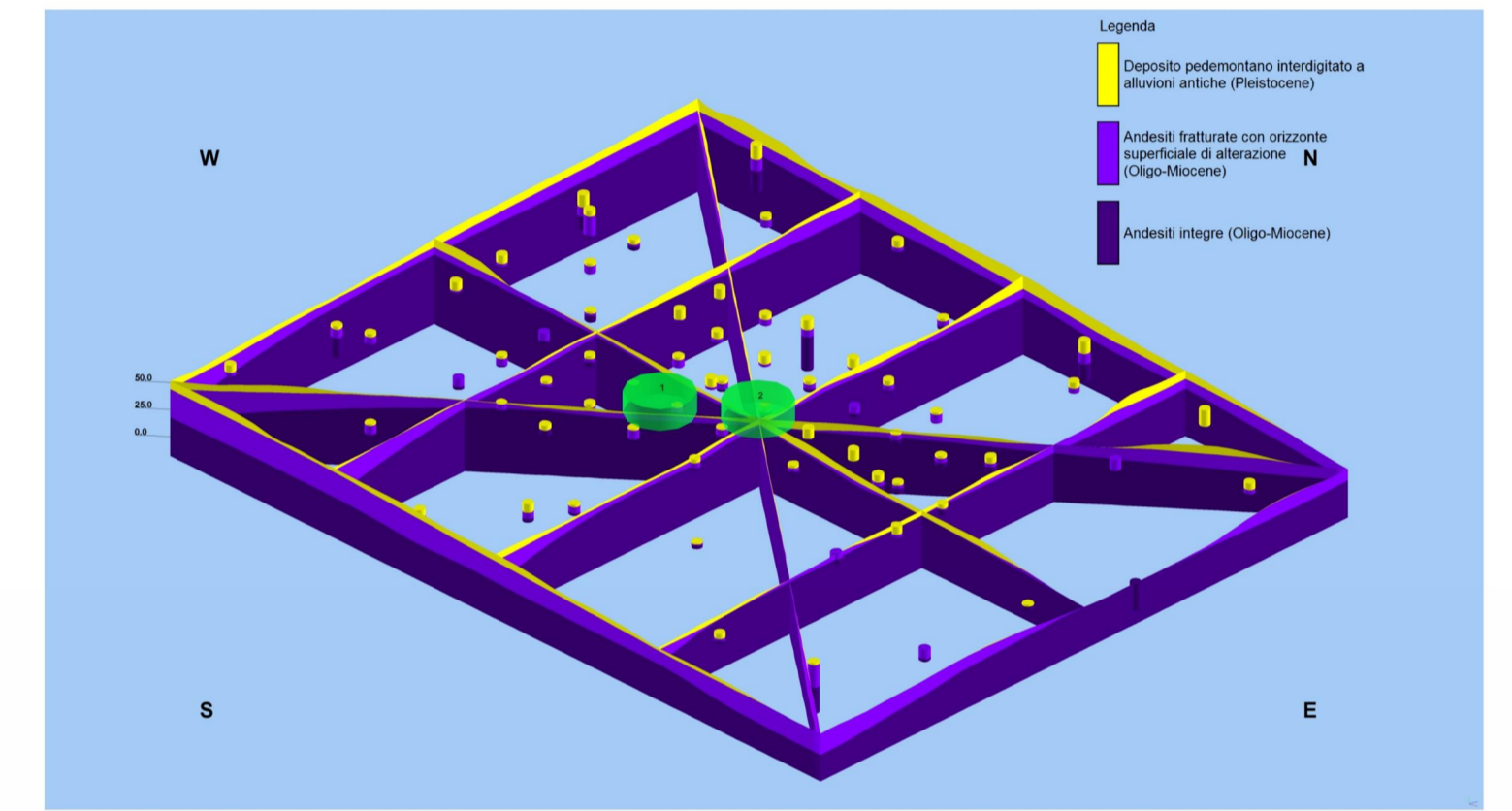
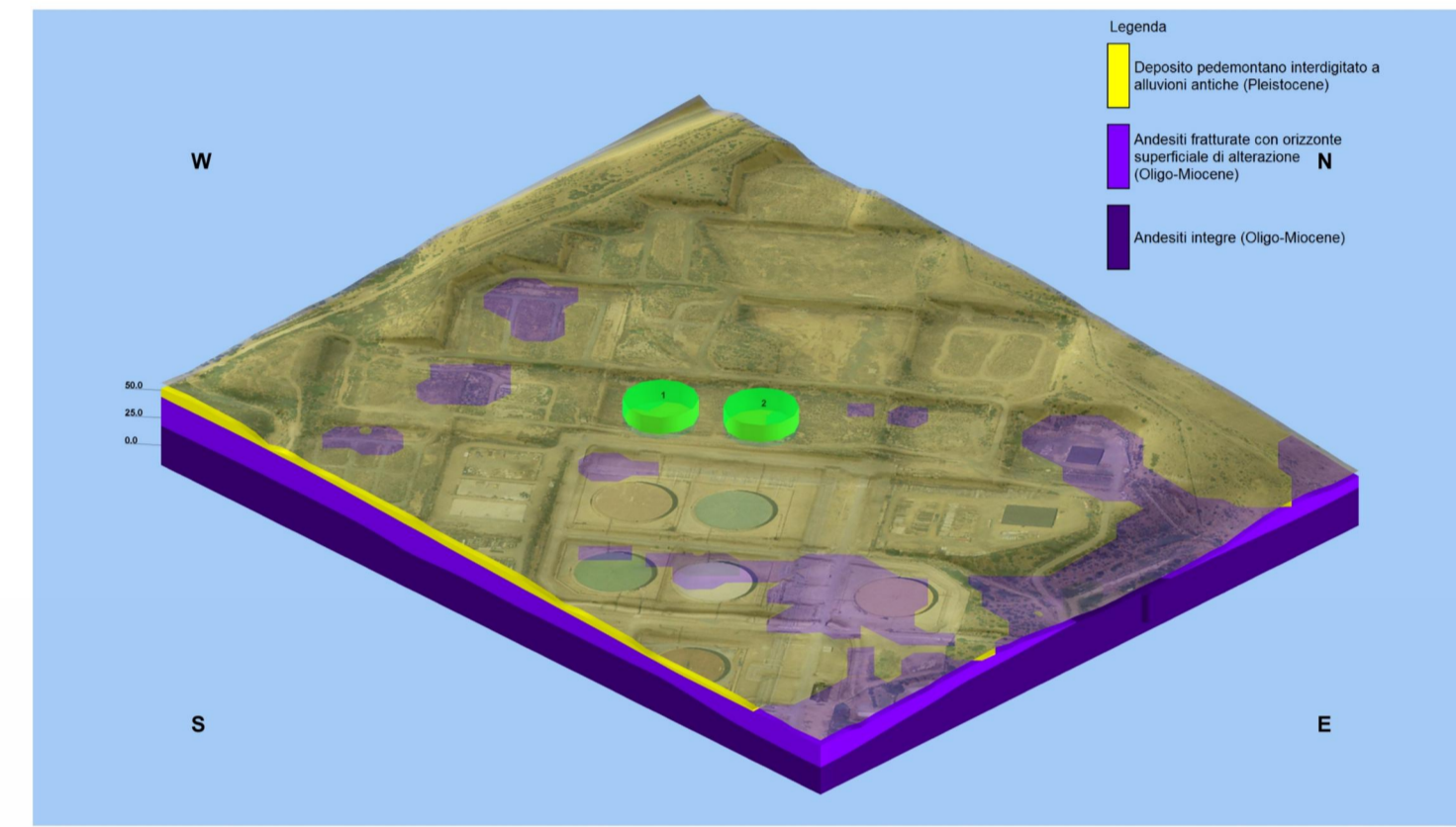
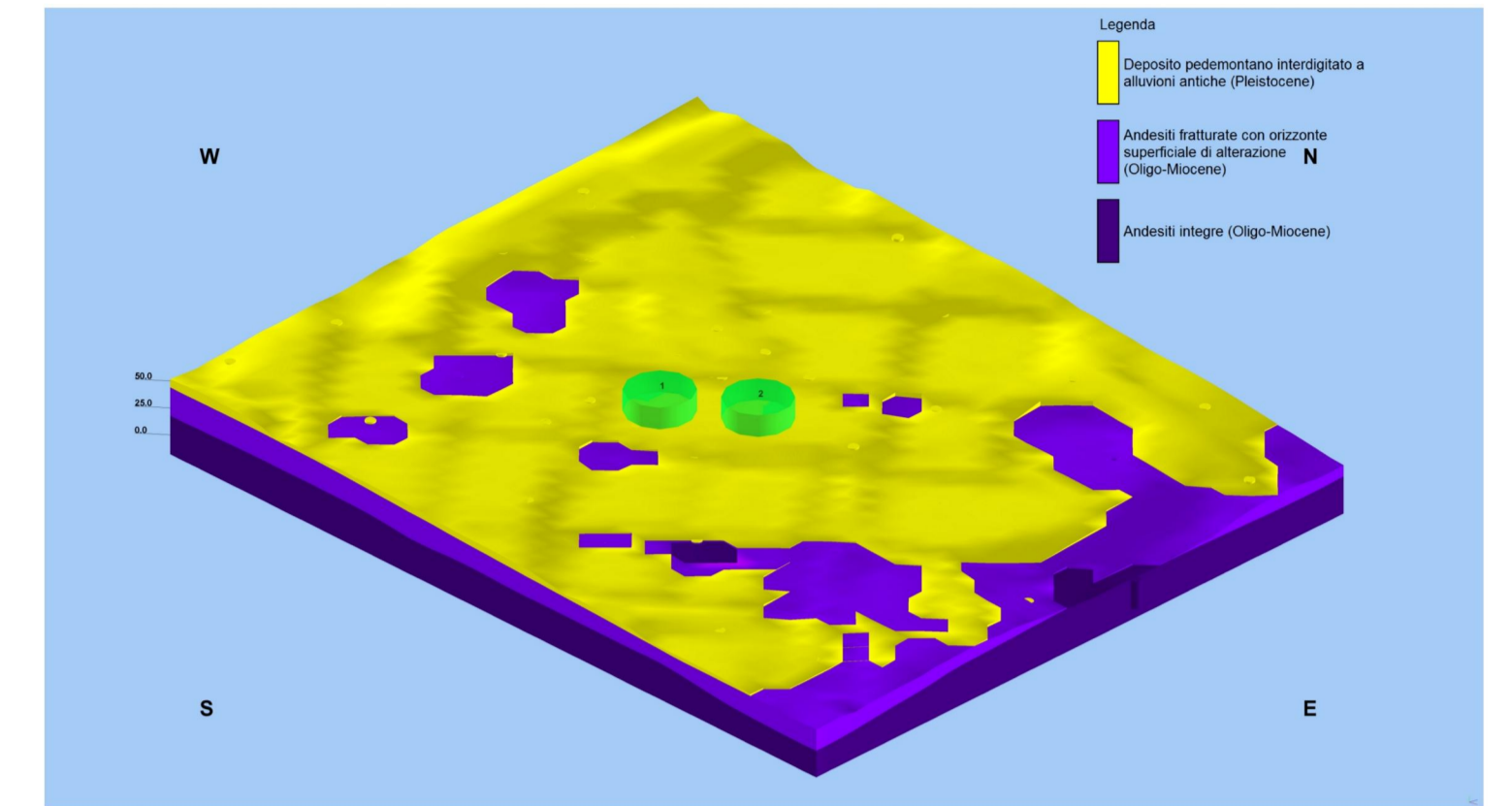
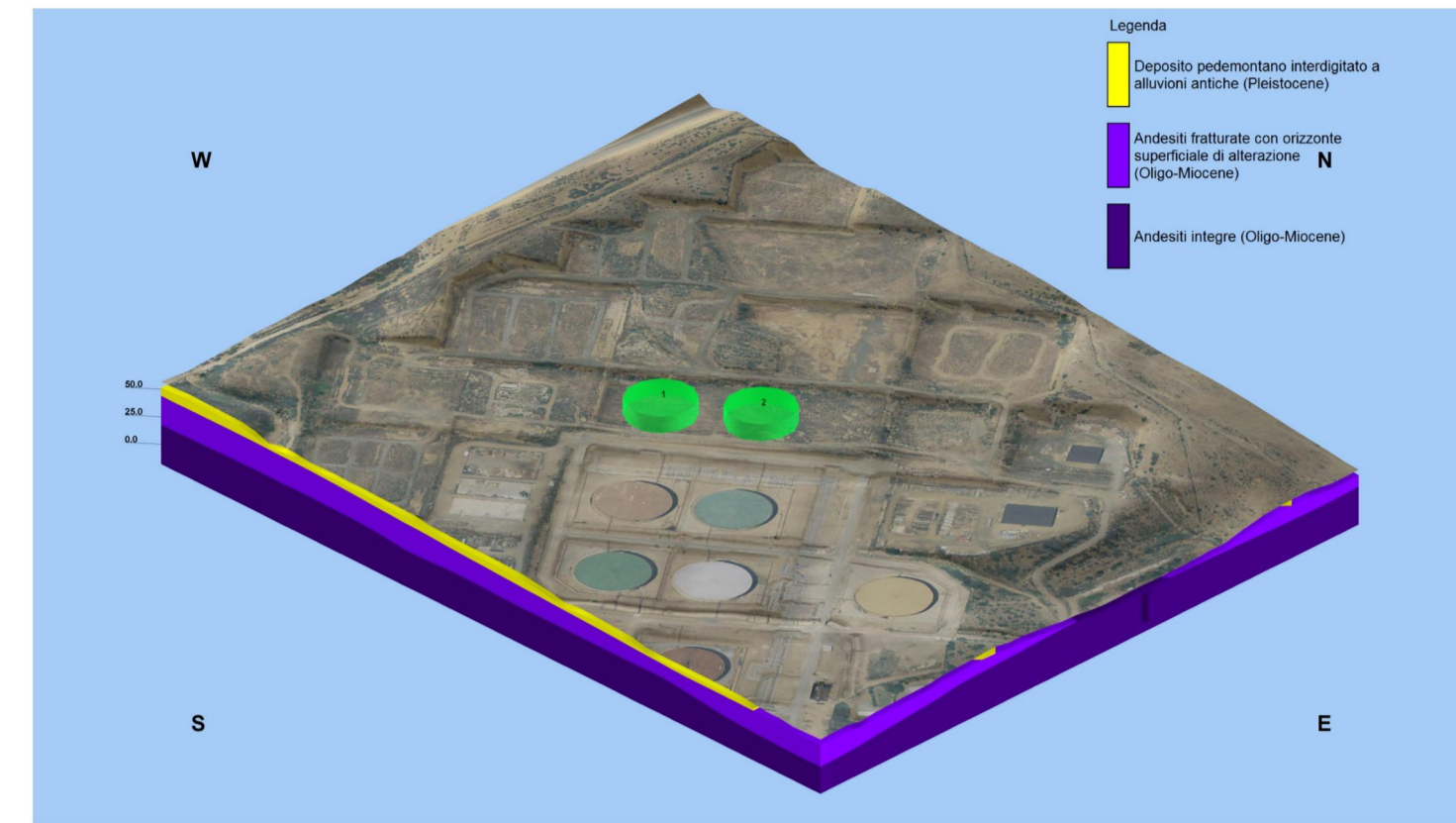
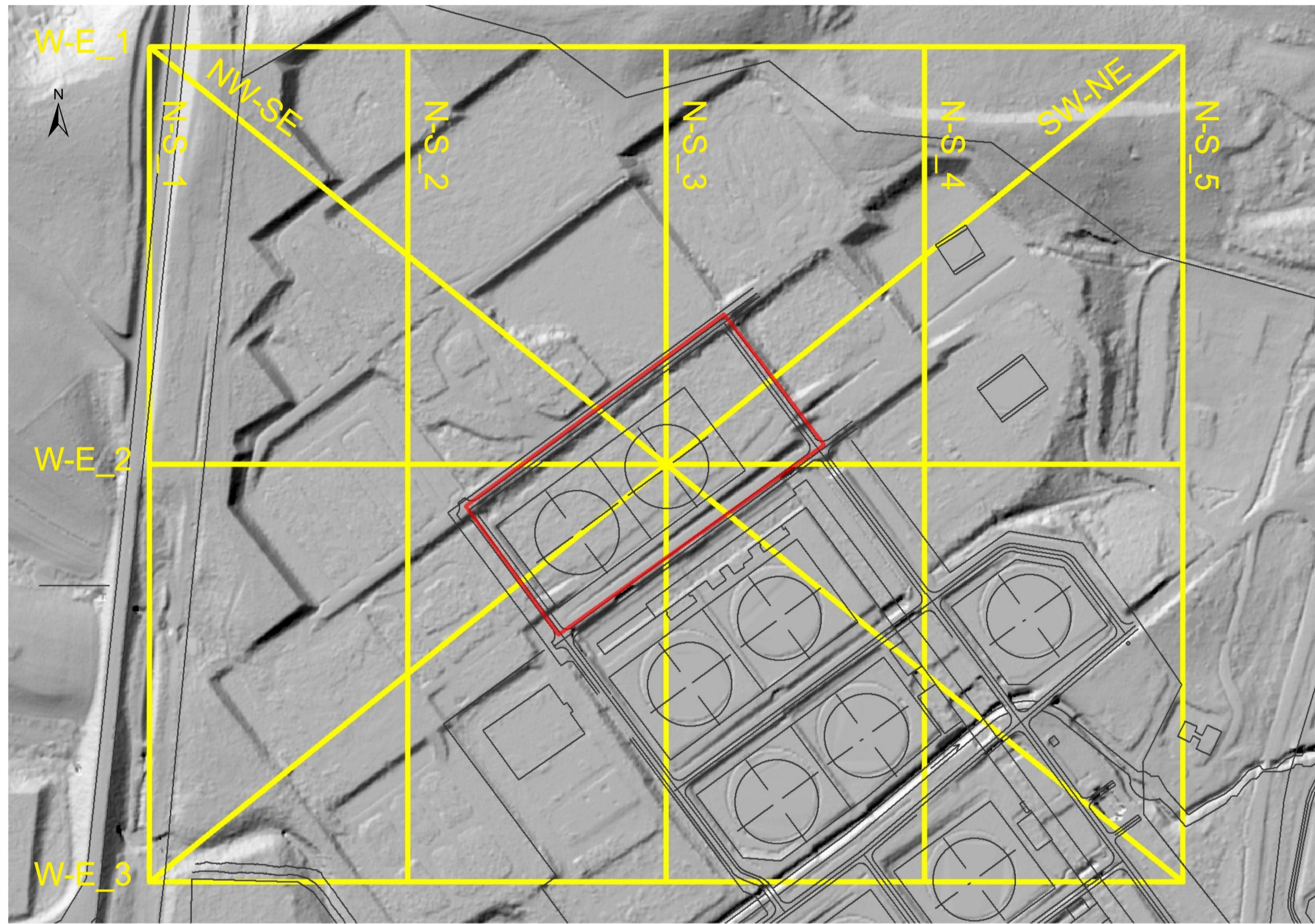


# MODELLO TRIDIMENSIONALE DEL SOTTOSUOLO, SEZIONI GEOLOGICHE E ISOPACHE



Rev.	Data	Descrizione	Dis.	Contr.	Appr.
0	15/07/16	INNESSO PER PROCEDURA DI VIA	IAT	SARTEC	SARTEC

**IMPIANTO COMPLESSO RAFFINERIA, IGCC E IMPIANTI NORD**  
 NUOVI SERBATOI DI STOCCAGGIO GASOLI ST209 E ST210  
 STUDIO DI IMPATTO AMBIENTALE  
 - Modello tridimensionale del sottosuolo, sezioni geologiche e isopache -

Comessa n°: 2016350-ING000  
 Dis. n°: AM-IAS10008  
 Revisione: 0  
 Scala: -  
 Sostituisce It: //  
 Sostituito da: //

Il presente documento è di proprietà di Sarra Ricerche e Tecnologie che ne tutela i diritti a termini di legge.