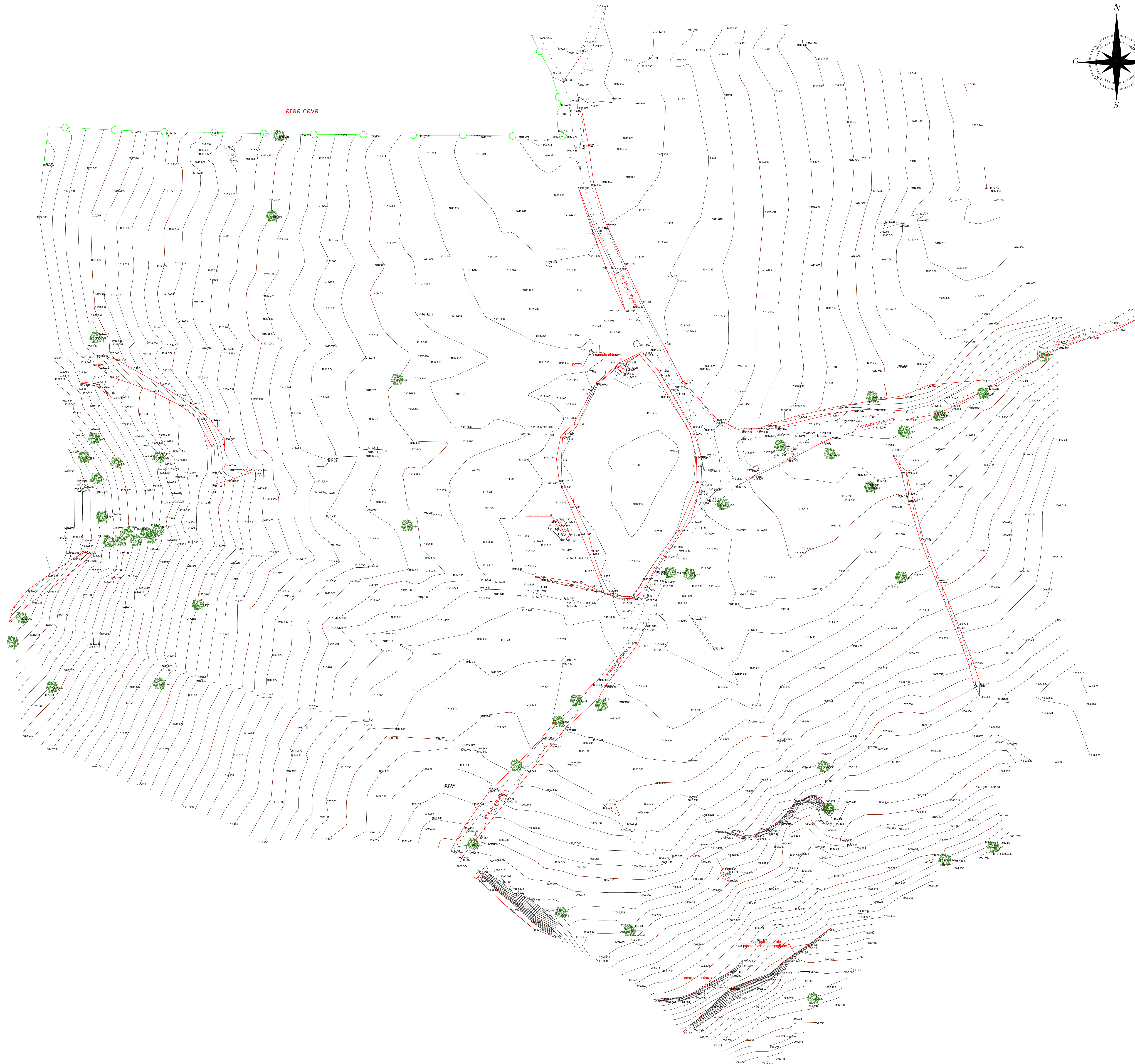
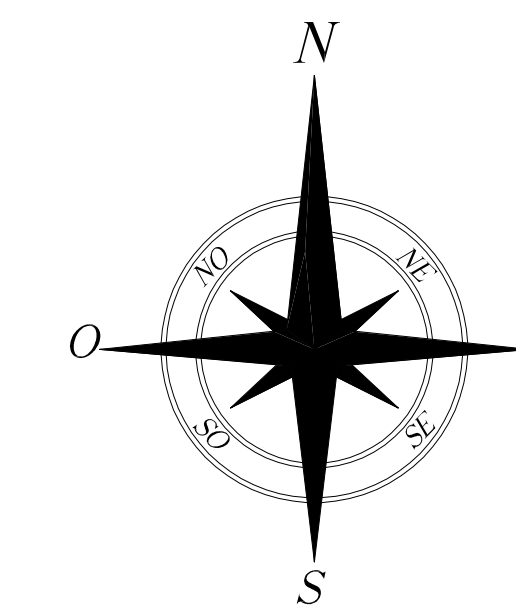


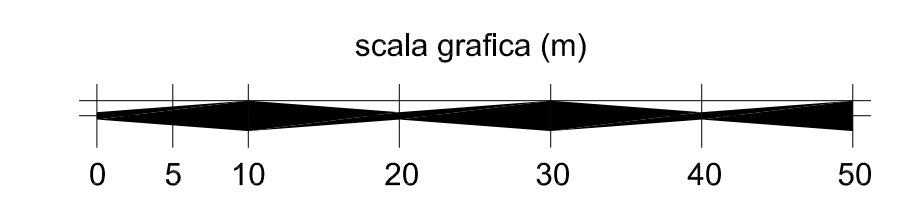
**NOTE GENERALI**

- Rappresentazione in Coordinate Gauss-Boaga
- Altimetria riferita al livello medio del mare (Q sm - Mareografo di Genova)



- Recinzione
- Scarpata
- Quercia/albero
- Curva di livello direttrice
- Curva di livello secondaria
- Strada/pista sterrata
- Punto quotato/rilevato

Drawing Coordinate System :  
 Datum: MONTE MARIO 1940 - GORGOGNONE  
 Spheroid: HAYFORD 1909 - INTERNATIONAL 1924  
 Projection: Transverse Mercator - Gauss Boaga East



03	29/10/2016	AFC	Approved For Construction	G. LO SASSO	M. DE FALCO	M. DE FALCO
02	19/06/2016	AFC	Approved For Construction	G. LO SASSO	M. DE FALCO	M. DE FALCO
01	23/04/2016	IFC	Issued For Comments	G. LO SASSO	M. DE FALCO	M. DE FALCO
00	24/03/2016	IFC	Issued For Comments	G. LO SASSO	M. DE FALCO	M. DE FALCO
Revision	Date	Status	Revision memo	Issued by	Checked by	Approved by



This document is the property of TOTAL and shall not be disclosed to third parties or reproduced without permission of the owner. This document has been generated by an Electronic Document Management System. When printed it is considered as the information only copy. The controlled copy is the screen version and it is the holder's responsibility that he/she hides the latest valid version.

TEMPA ROSSA PROJECT  
 PROGETTAZIONE DEL NUOVO PIAZZALE DI PERFORAZIONE "GORGOGNONE 3"  
 "AREA POZZO"  
 GG-3 - PLANIMETRIA DI RILIEVO

Doc. Type:	LAY	Scale:	CIV	Electronic File Name:
Company Document N°	IT-TPR-WS-SID-000410	Rev:	03	Scale:
Contractor Document N°	IT-TPR-WS-SID-000410_03	Format:	A0	Sheet:
				1 of 1