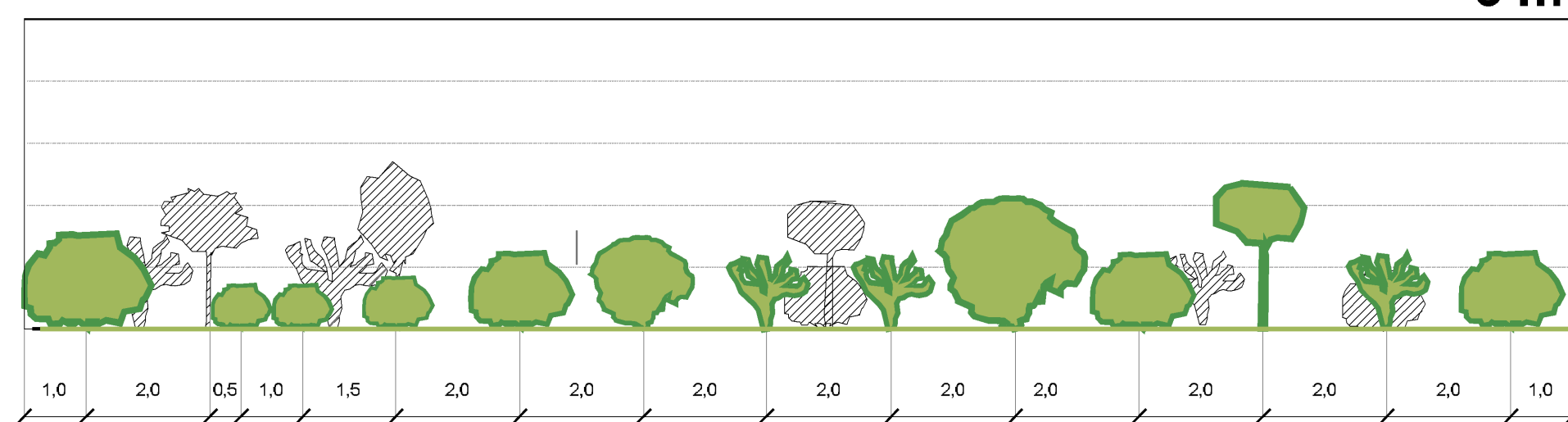


M - SERIE DELLA FARNIA

Mcarb a messa a dimora 5 m



Mcarb dopo 15 anni 10 m

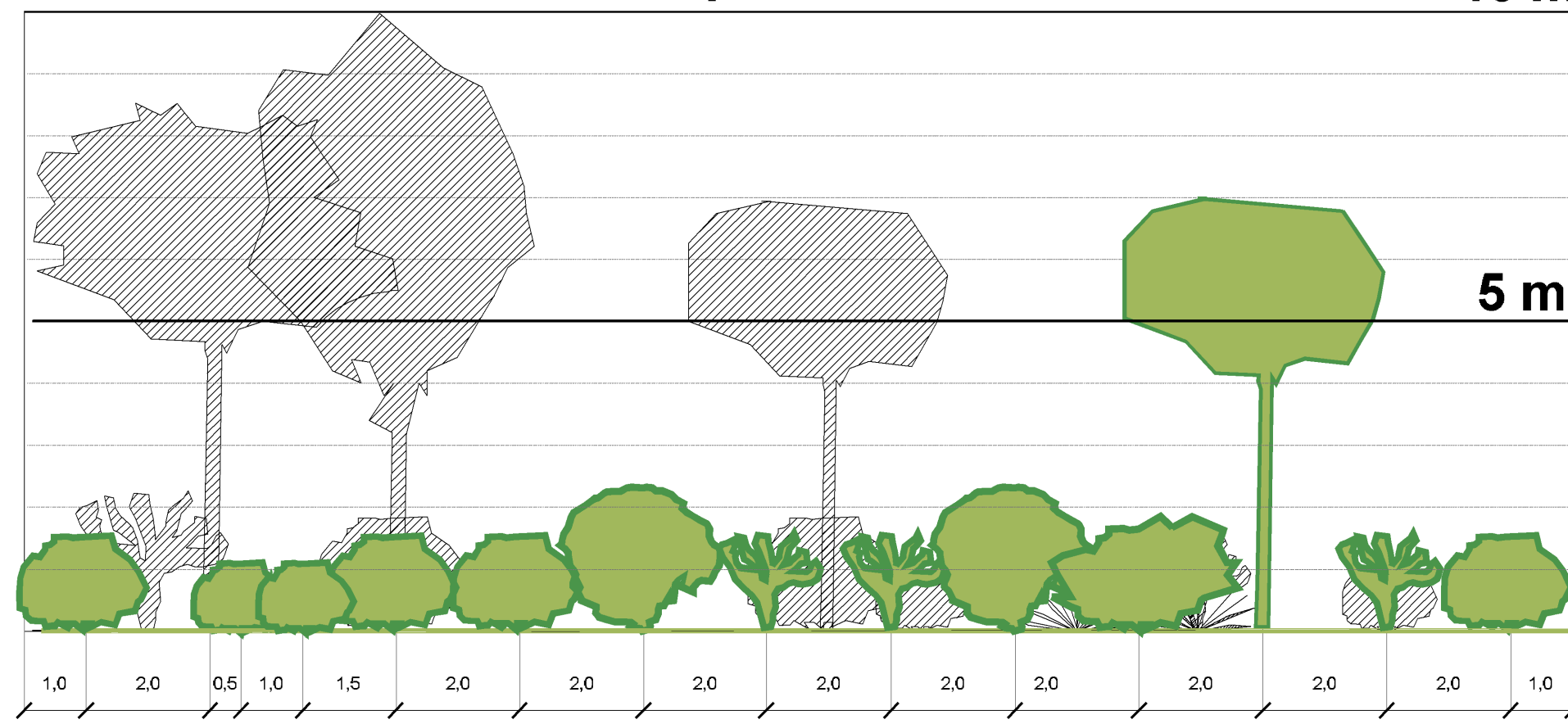
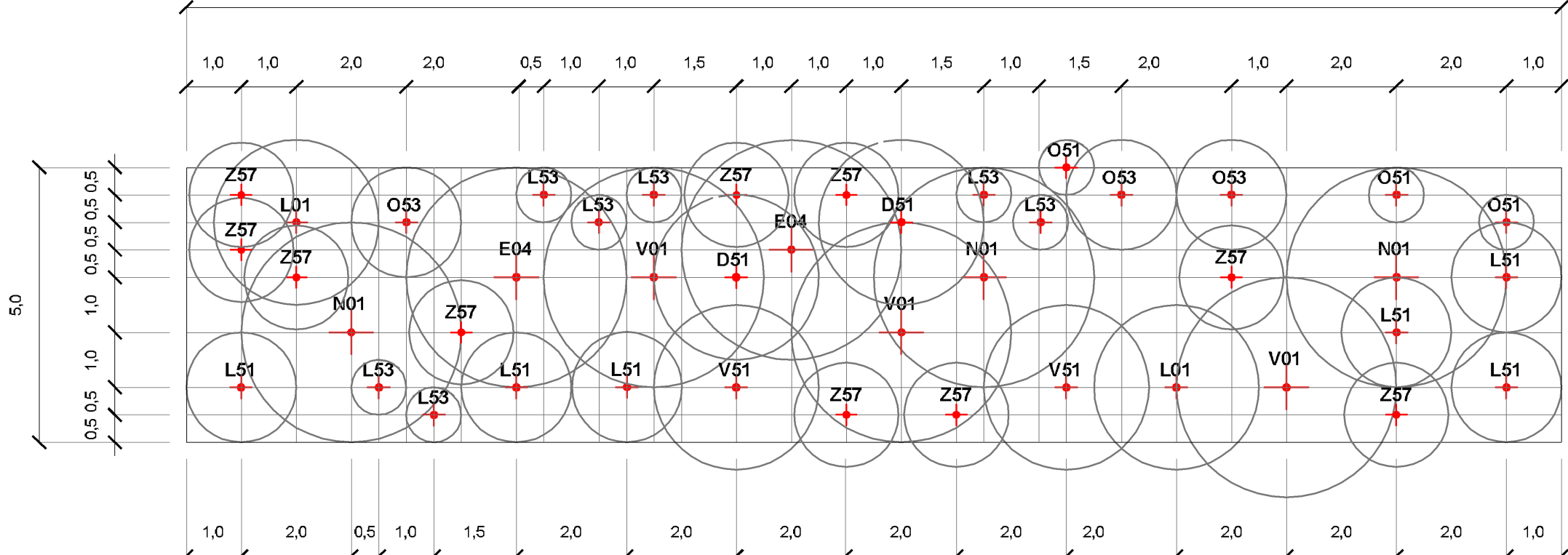
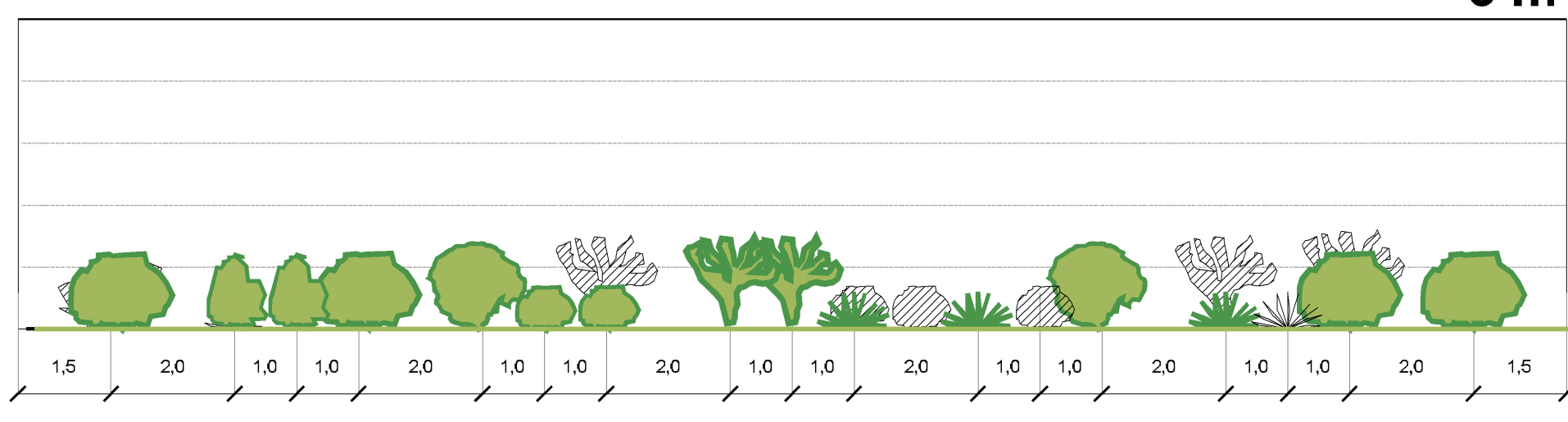


Table with 4 columns: Cod., Nome scientifico, Nome comune, n°, Caratteristiche alla messa a dimora. Lists various plant species and their specifications.



Mc a messa a dimora 5 m



Mc dopo 15 anni 5 m

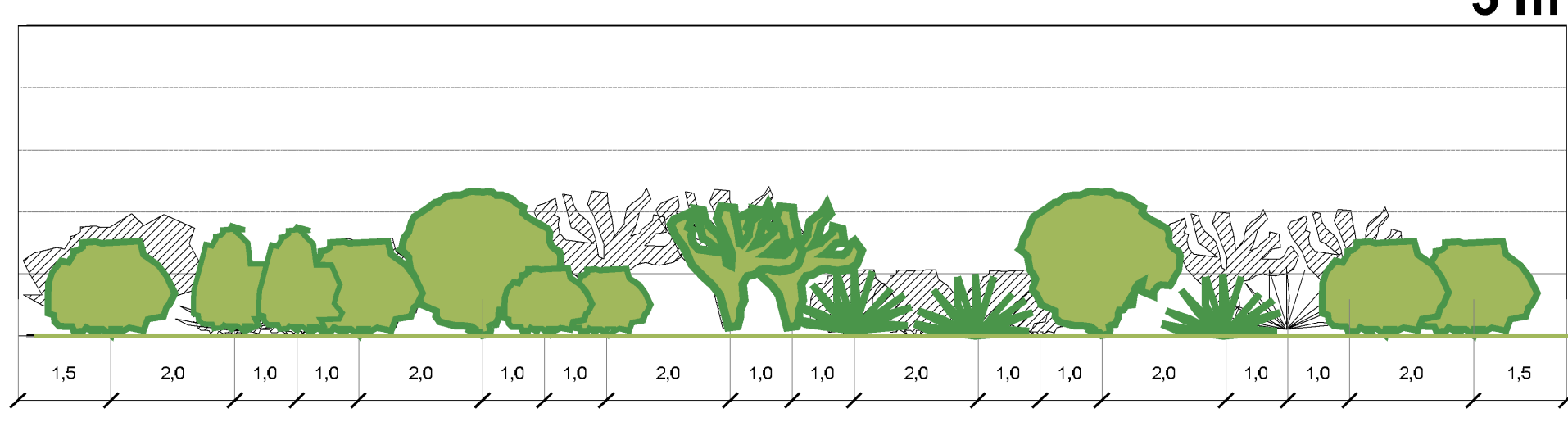


Table with 4 columns: Cod., Nome scientifico, Nome comune, n°, Caratteristiche alla messa a dimora. Lists various plant species and their specifications.

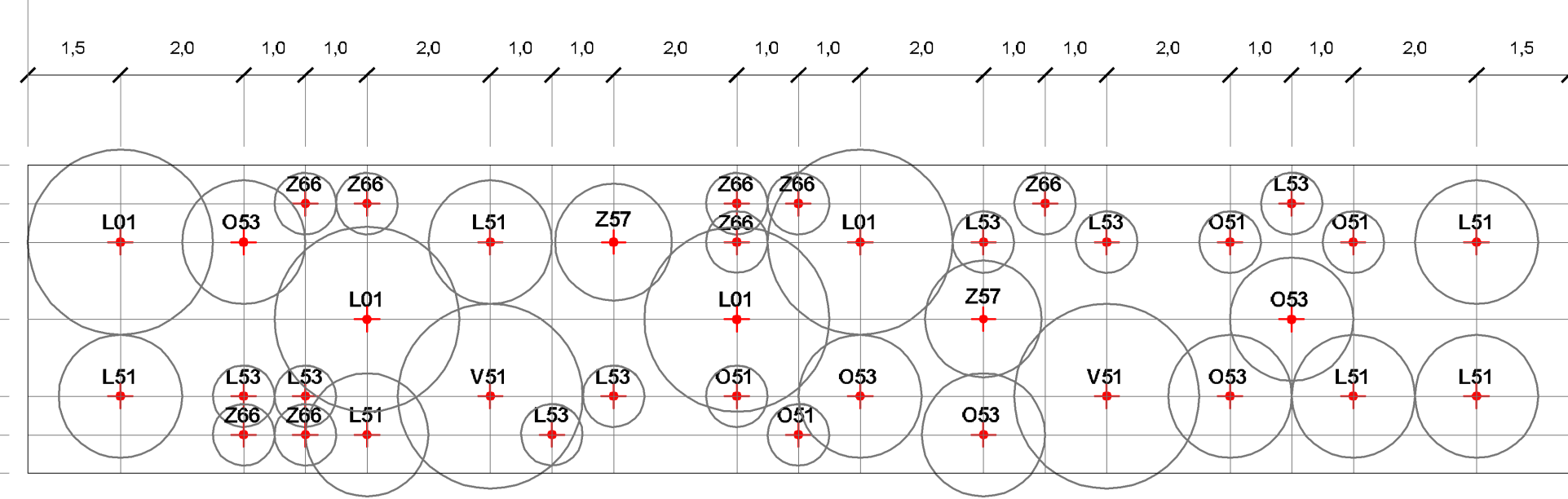
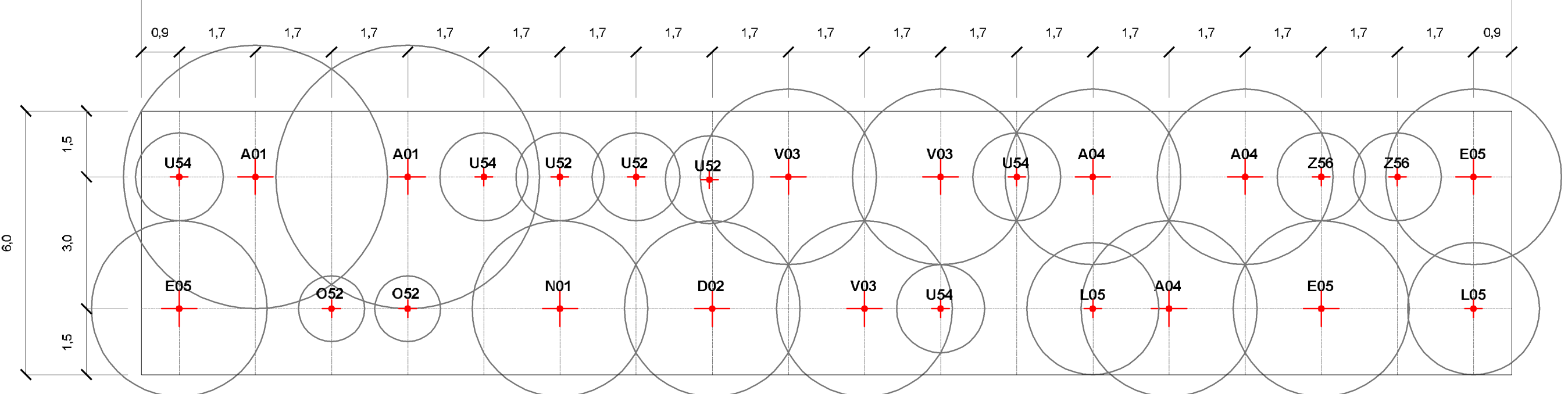
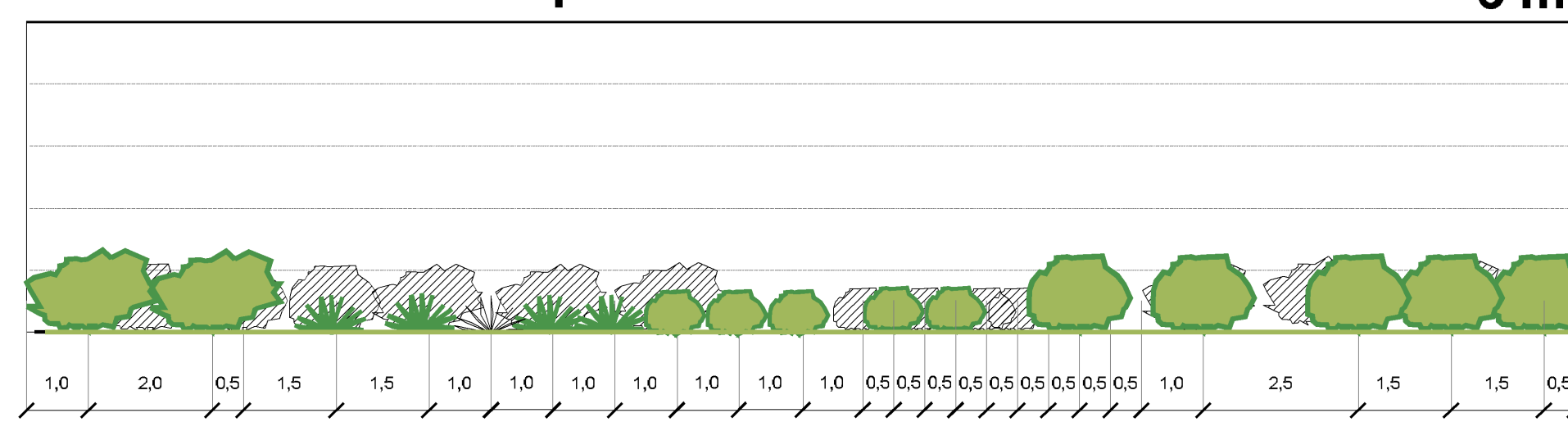


Table with 4 columns: Cod., Nome scientifico, Nome comune, n°, Caratteristiche alla messa a dimora. Lists various plant species and their specifications.



Mcp a messa a dimora 5 m



Mcp dopo 15 anni 5 m

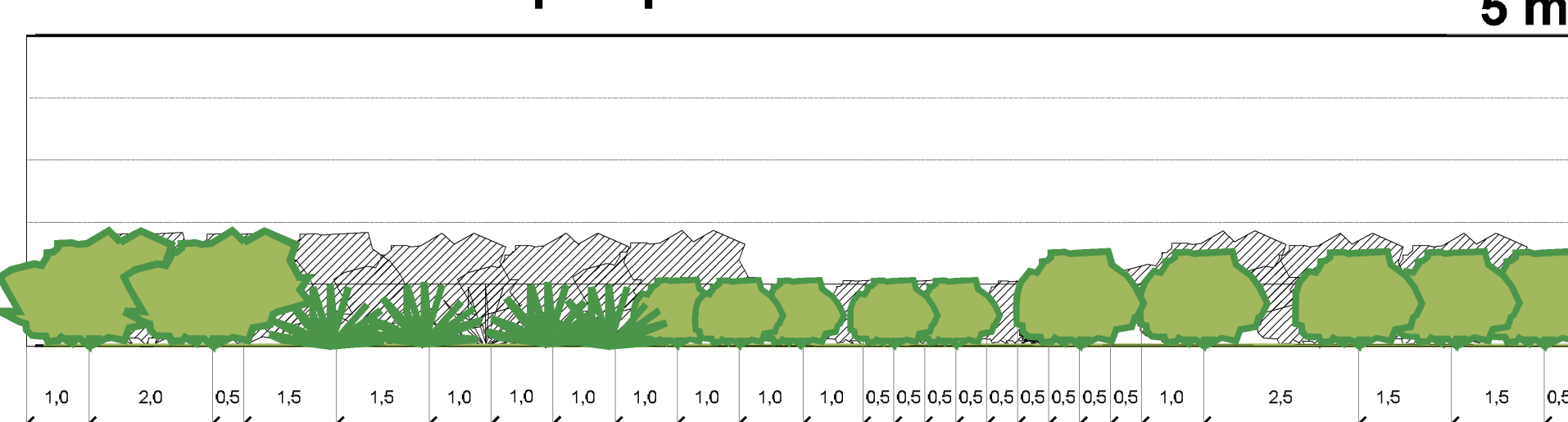
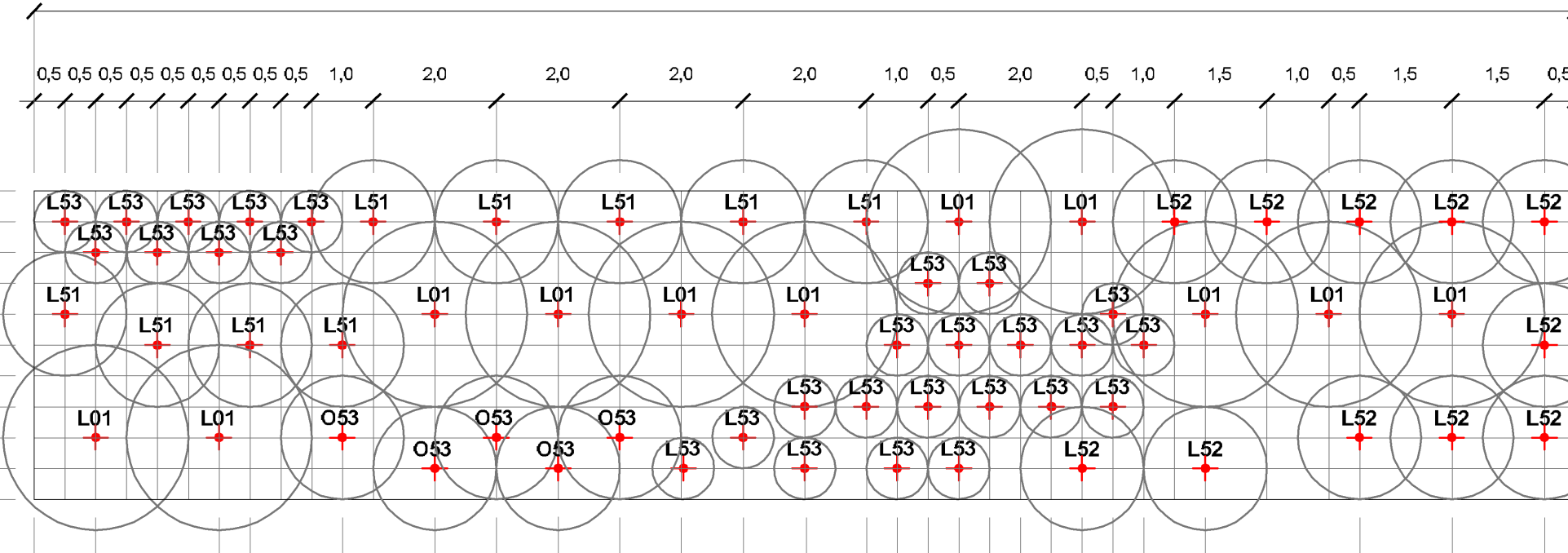
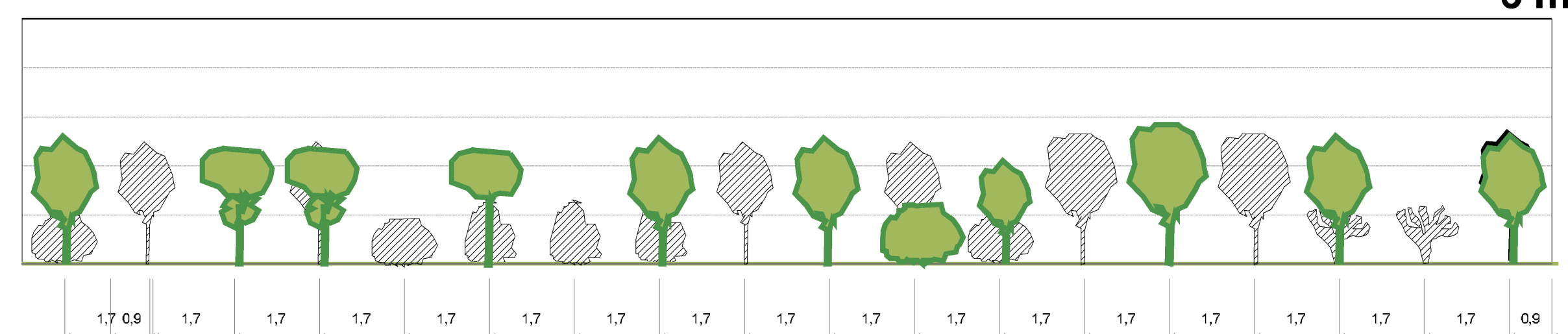


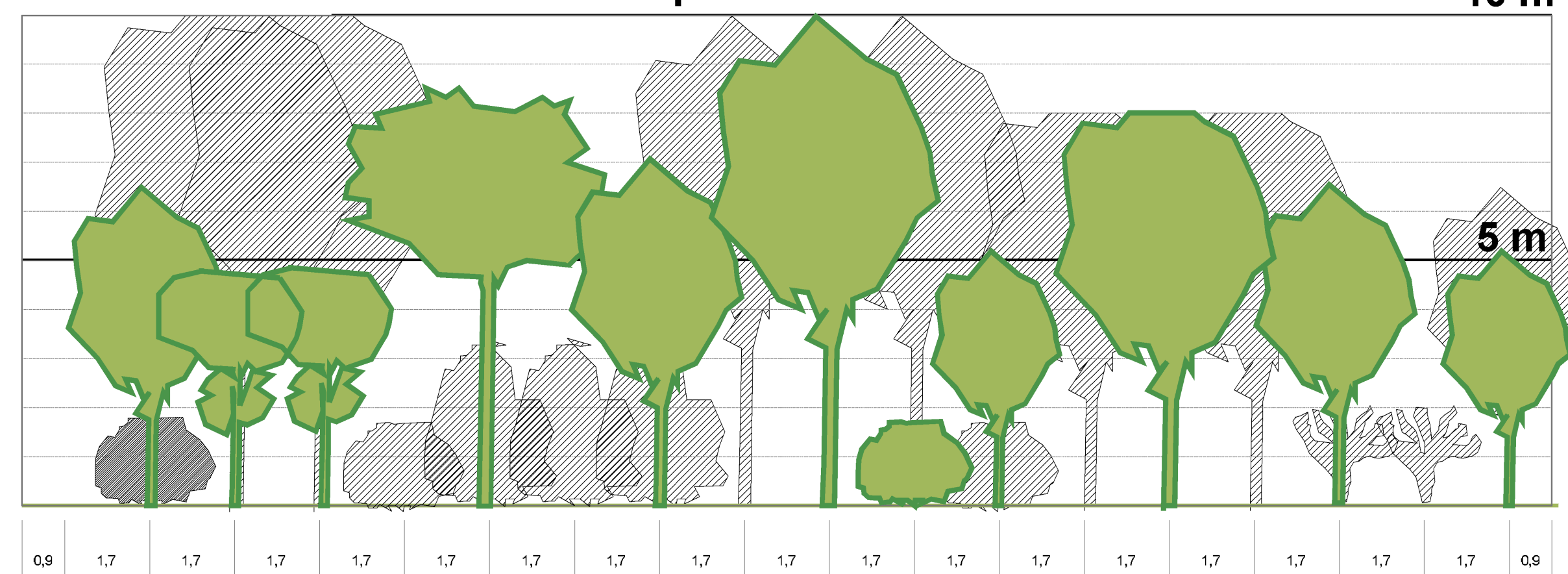
Table with 4 columns: Cod., Nome scientifico, Nome comune, n°, Caratteristiche alla messa a dimora. Lists various plant species and their specifications.



MBm a messa a dimora 5 m

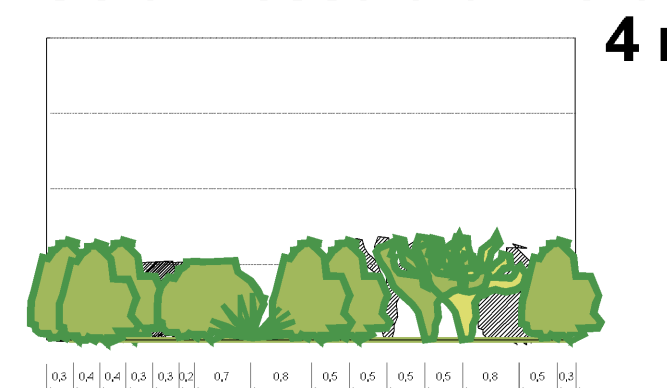


MBm dopo 15 anni 10 m

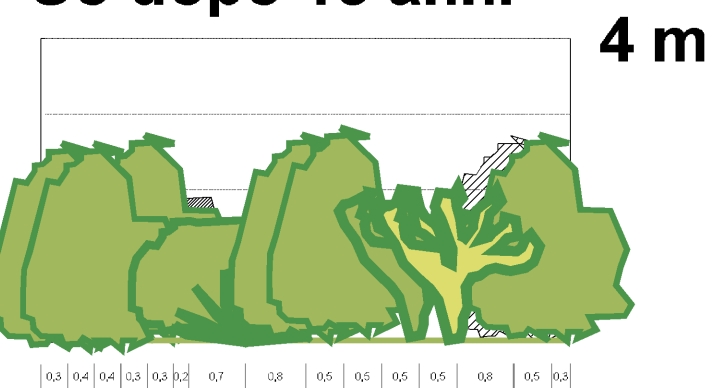


FORMAZIONI LINEARI – SVILUPPO SCALA 1:100

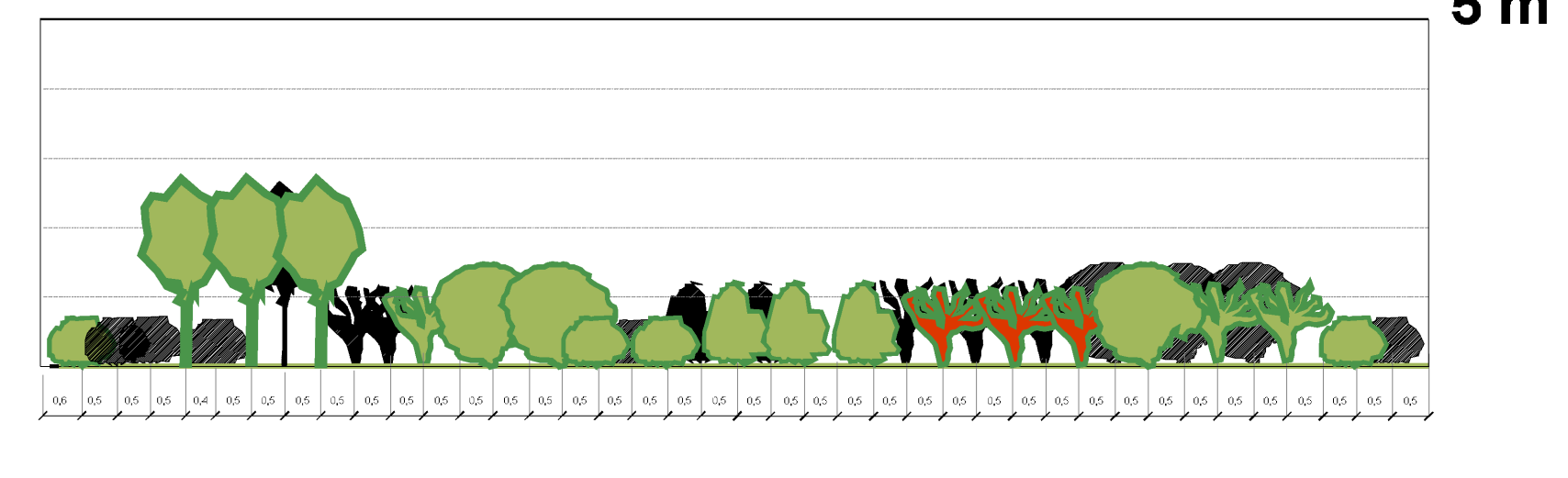
So a messa a dimora 4 m



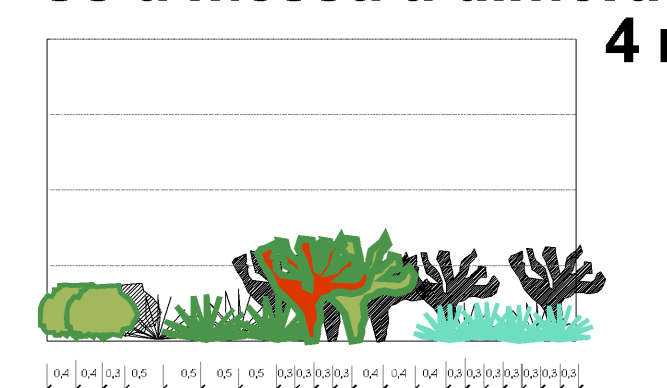
So dopo 15 anni 4 m



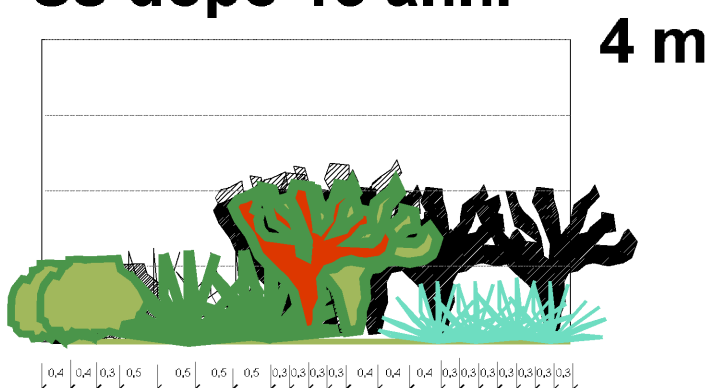
Fa a messa a dimora 5 m



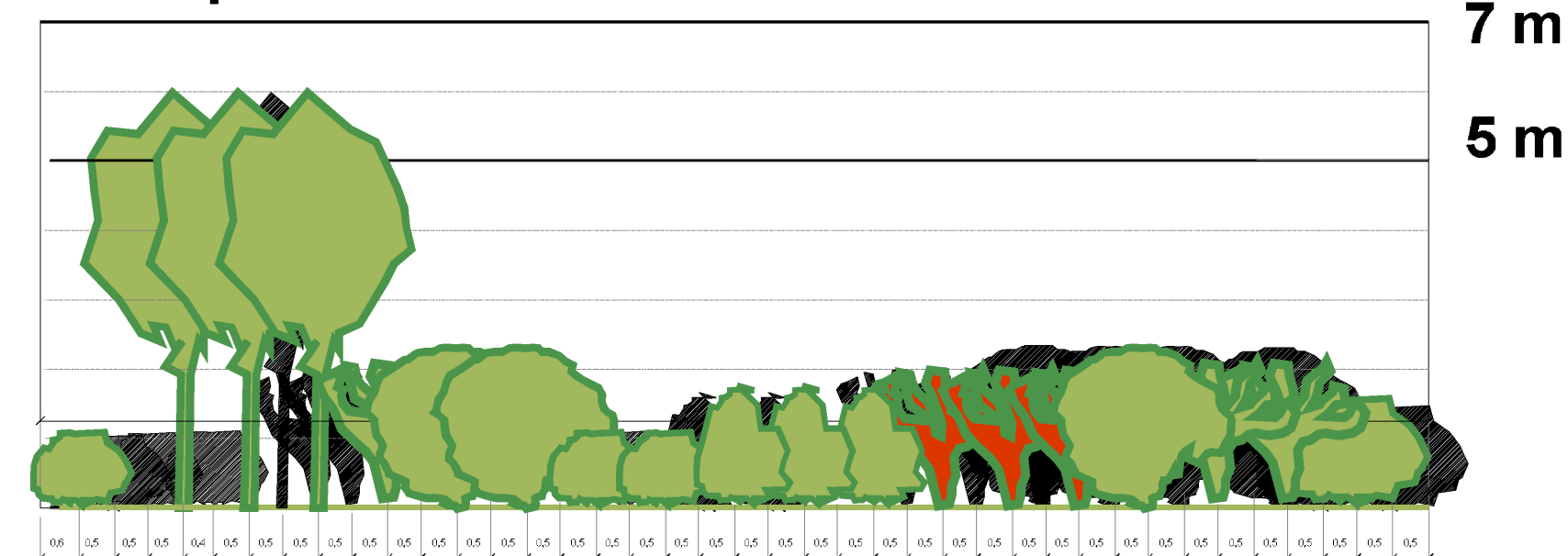
Ss a messa a dimora 4 m



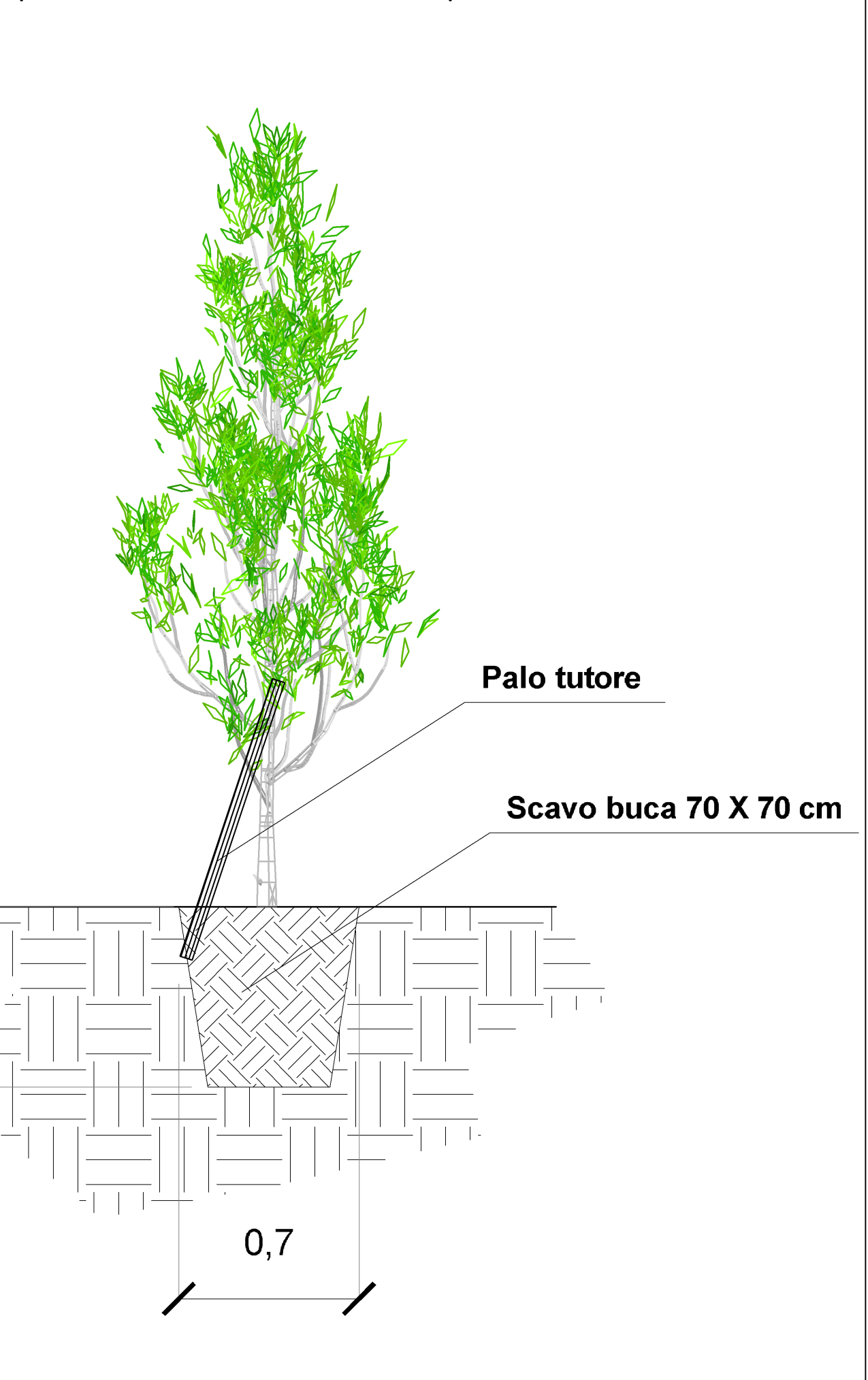
Ss dopo 15 anni 4 m



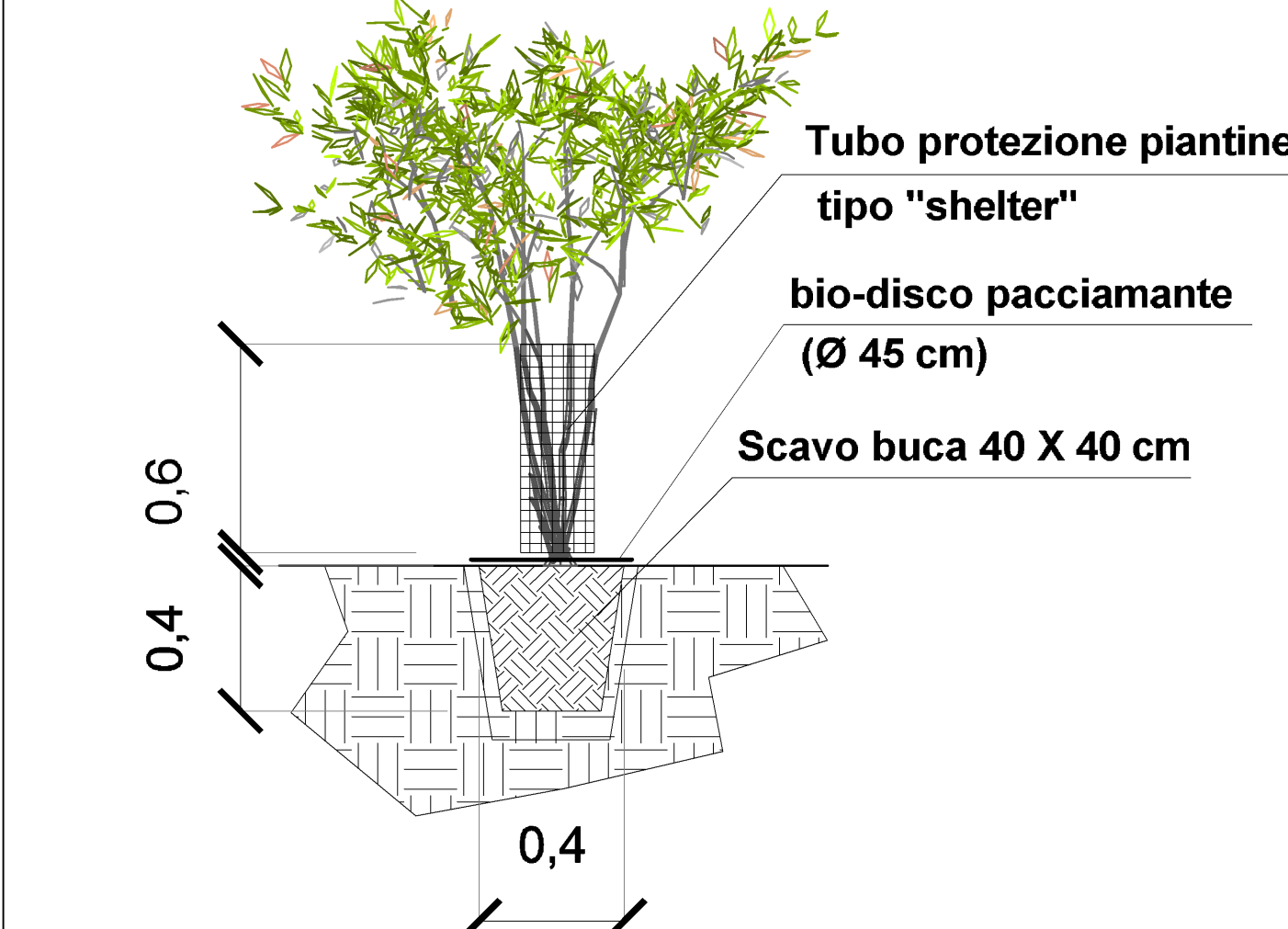
Fa dopo 15 anni 7 m



Schema di messa a dimora per alberature esemplari



Schema di messa a dimora per alberature forestali ed arbusti



FORMAZIONI LINEARI – SCALA 1:50

Table with 4 columns: Cod., Nome scientifico, Nome comune, n°, Caratteristiche alla messa a dimora. Lists various plant species and their specifications.

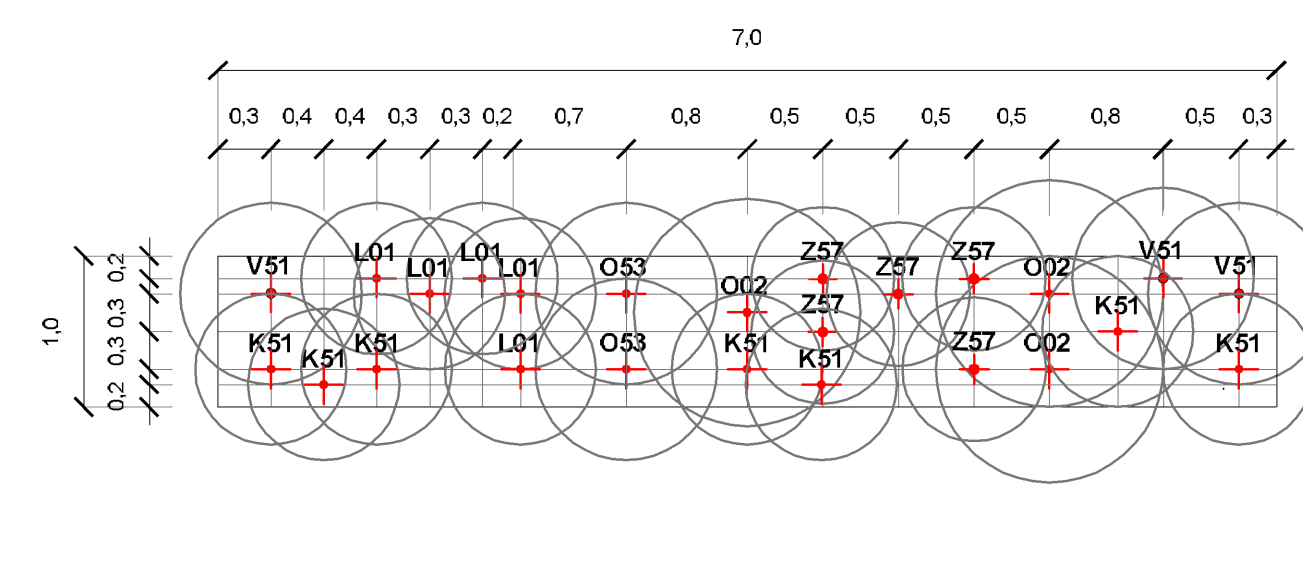


Table with 4 columns: Cod., Nome scientifico, Nome comune, n°, Caratteristiche alla messa a dimora. Lists various plant species and their specifications.

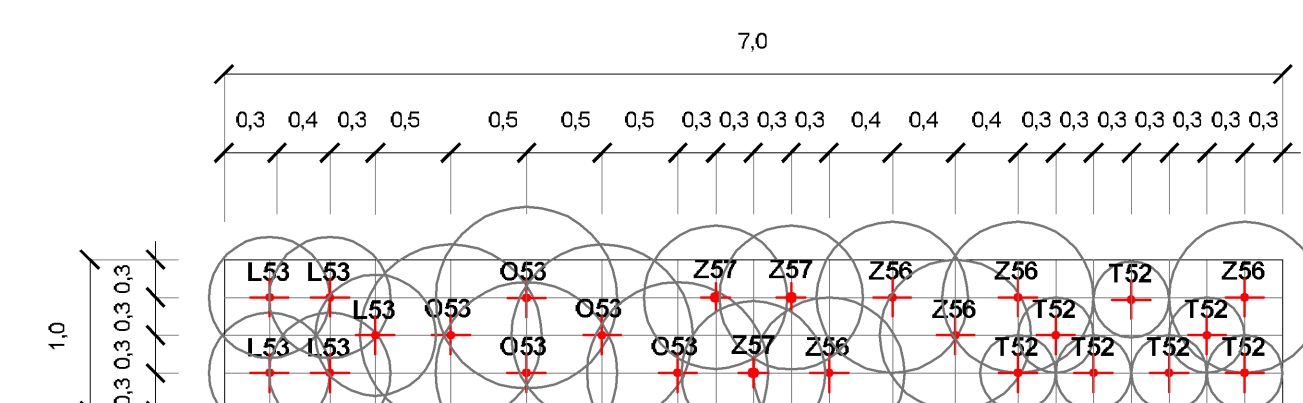
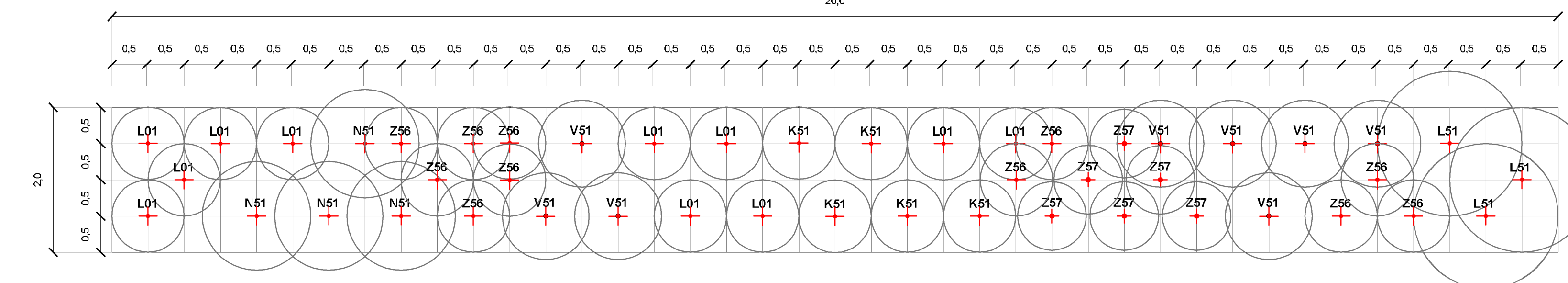
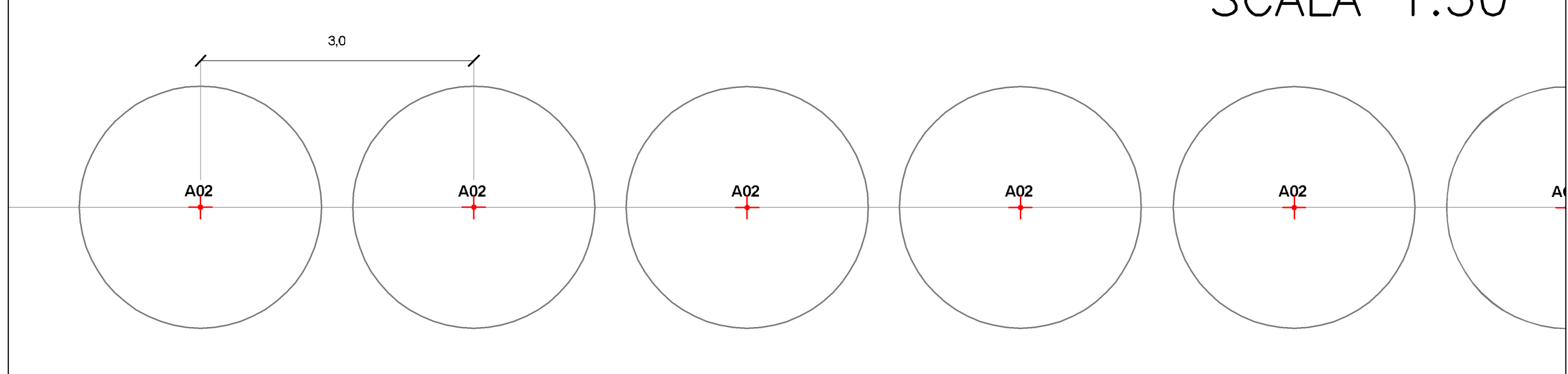


Table with 4 columns: Cod., Nome scientifico, Nome comune, n°, Caratteristiche alla messa a dimora. Lists various plant species and their specifications.



F Oc - Filare di Ostrya carpinifolia in zolla - circ. cm 8-10



SCALA 1:50

autostrade per l'italia

AUTOSTRADA (A13) : BOLOGNA-PADOVA TRATTO: BOLOGNA - FERRARA

AMPLIAMENTO ALLA TERZA CORSIA TRATTO: BOLOGNA ARCOVEGGIO - FERRARA SUD

PROGETTO DEFINITIVO

DOCUMENTAZIONE GENERALE

OPERE A VERDE

ABACO DEGLI INTERVENTI VEGETAZIONALI

Table with 3 columns: PROJECT MANAGER, SUPPORTO SPECIALE, and REVISIONE. Lists roles and dates.

Table with 3 columns: PROJECT MANAGER, SUPPORTO SPECIALE, and REVISIONE. Lists roles and dates.

Table with 3 columns: PROJECT MANAGER, SUPPORTO SPECIALE, and REVISIONE. Lists roles and dates.