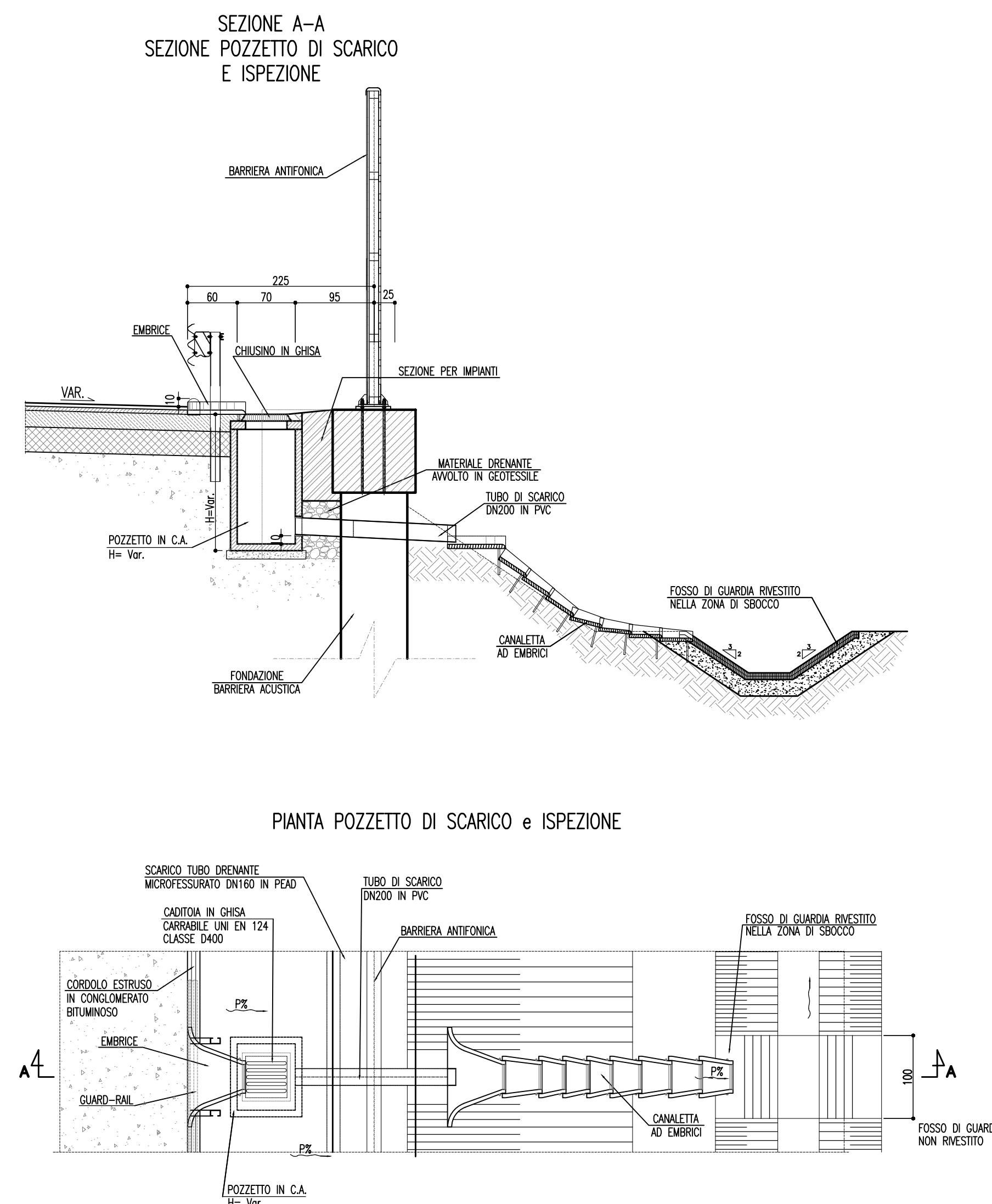
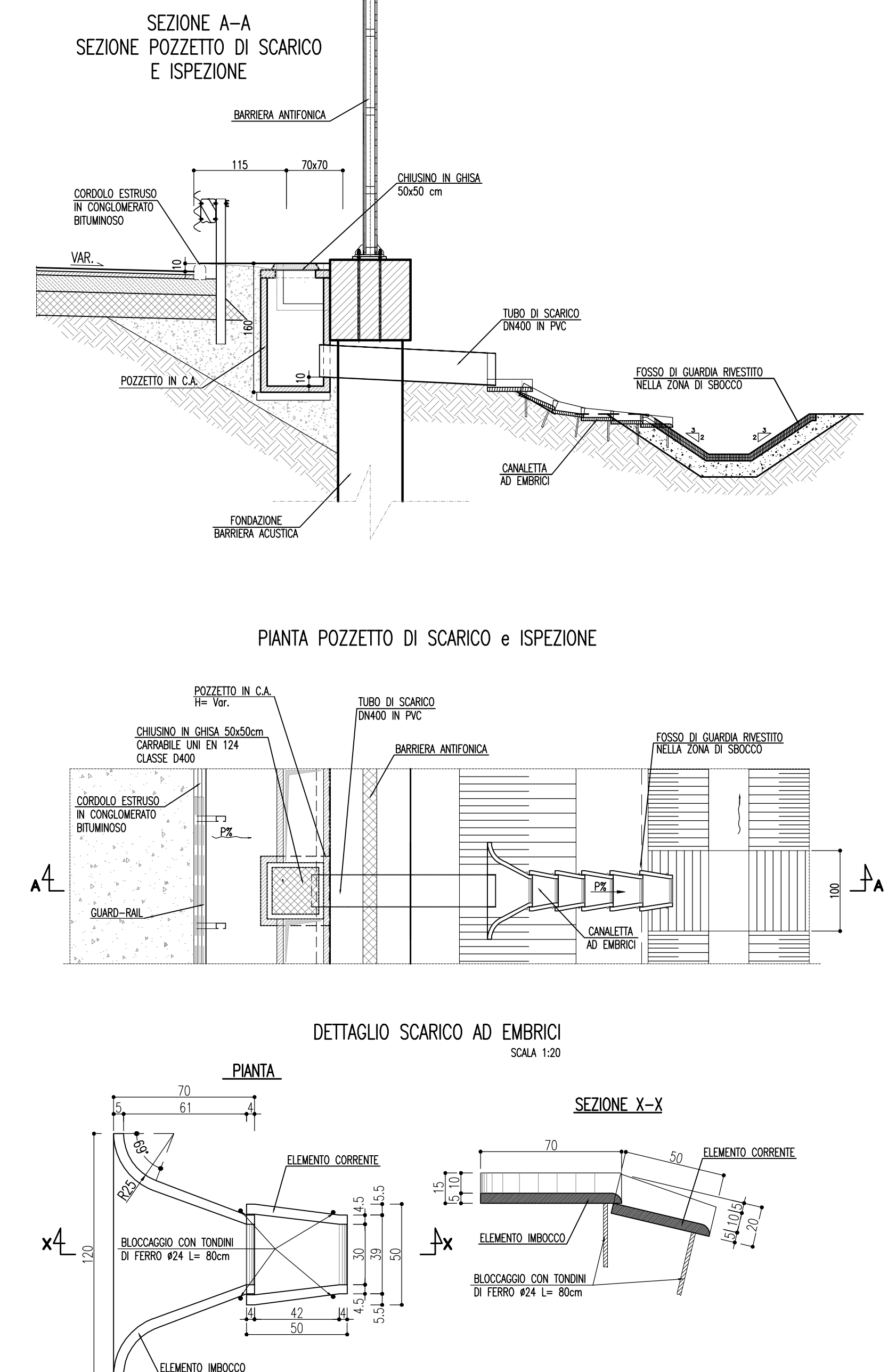


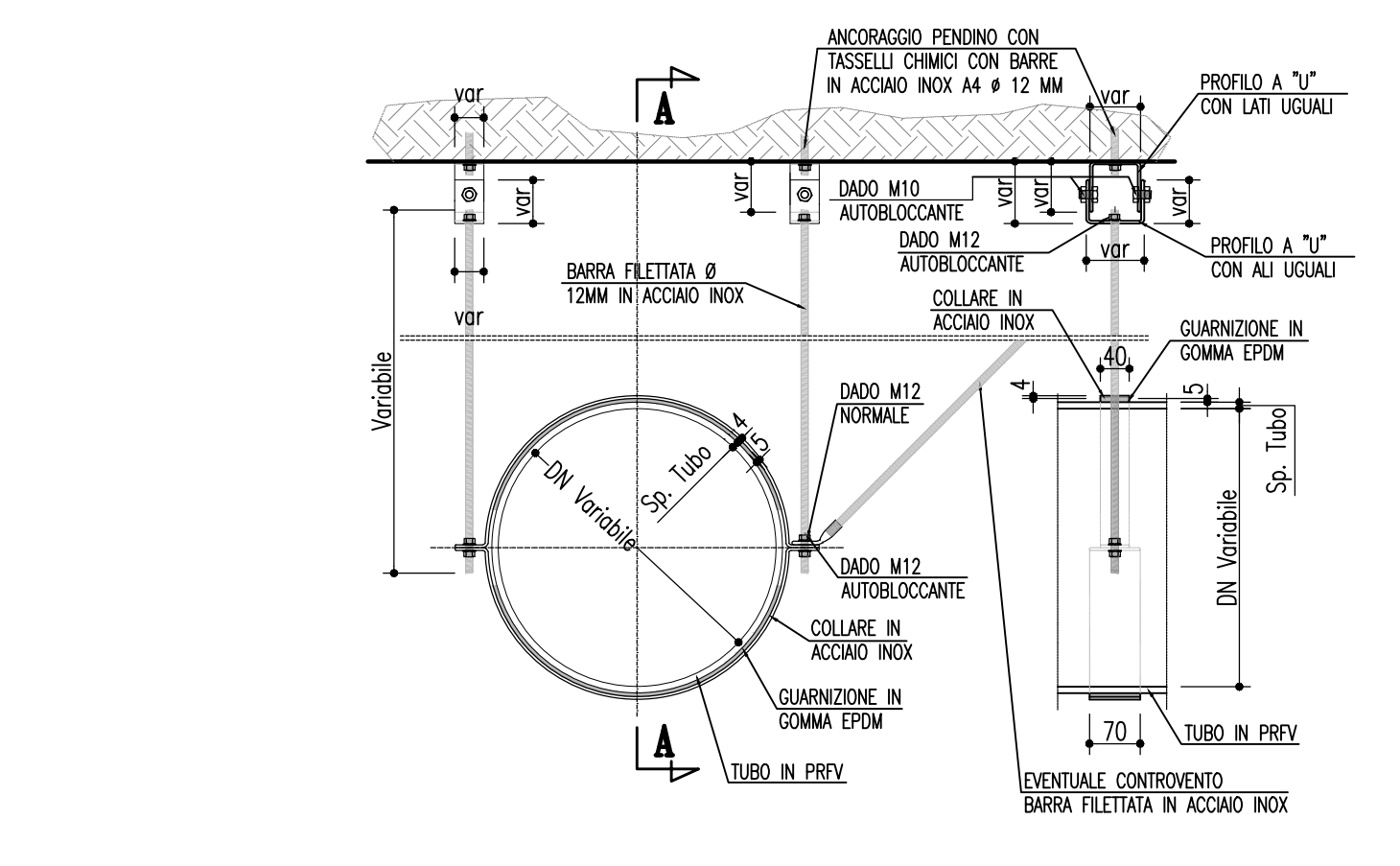
DRENAGGIO MARGINALE IN CORRISPONDENZA DELLA BARRIERA ANTIFONICA CANALETTA AD EMBRICI
- SCALA 1:50 -



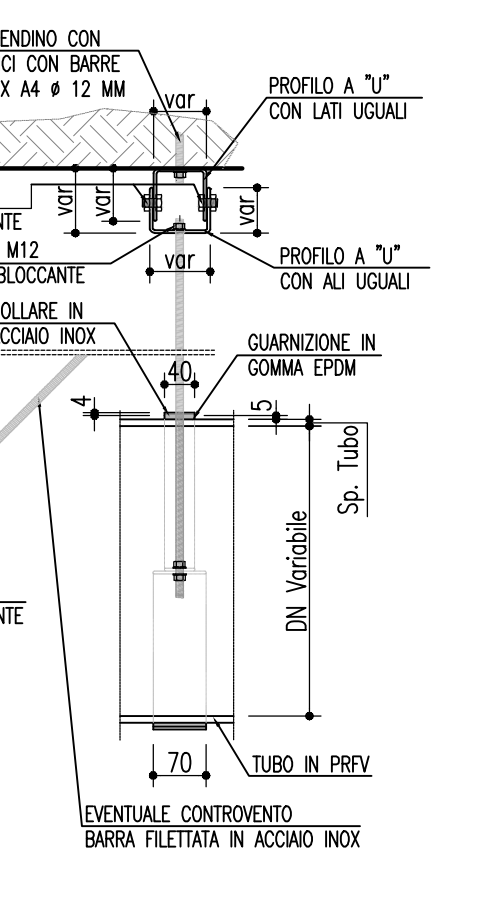
DRENAGGIO MARGINALE IN CORRISPONDENZA DELLA BARRIERA ANTIFONICA CON CANALA LONGITUDINALE CONTINUA APERTA E SCARICO CON EMBRICI
- SCALA 1:50 -



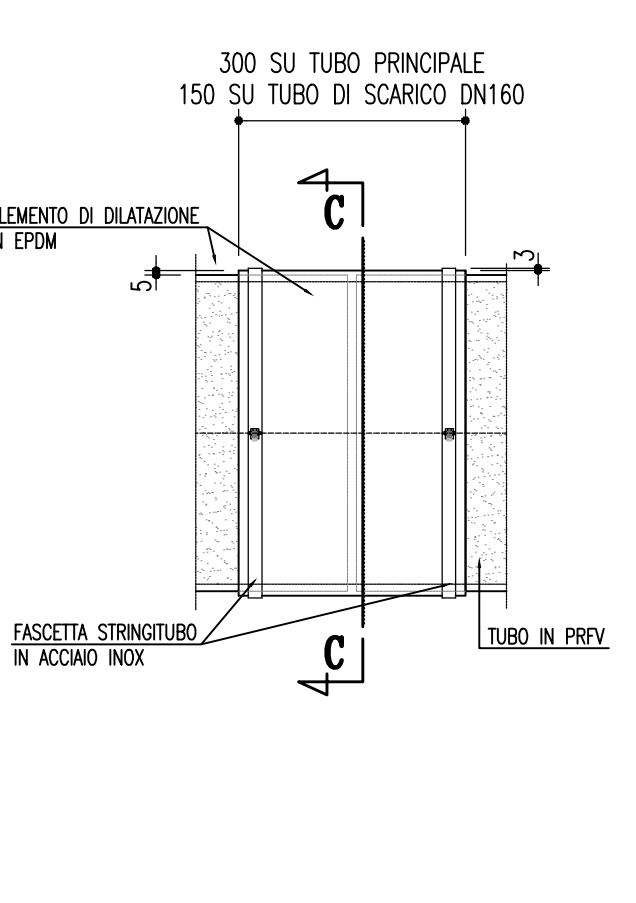
STRUTTURA DI SUPPORTO
- SCALA 1:10 -



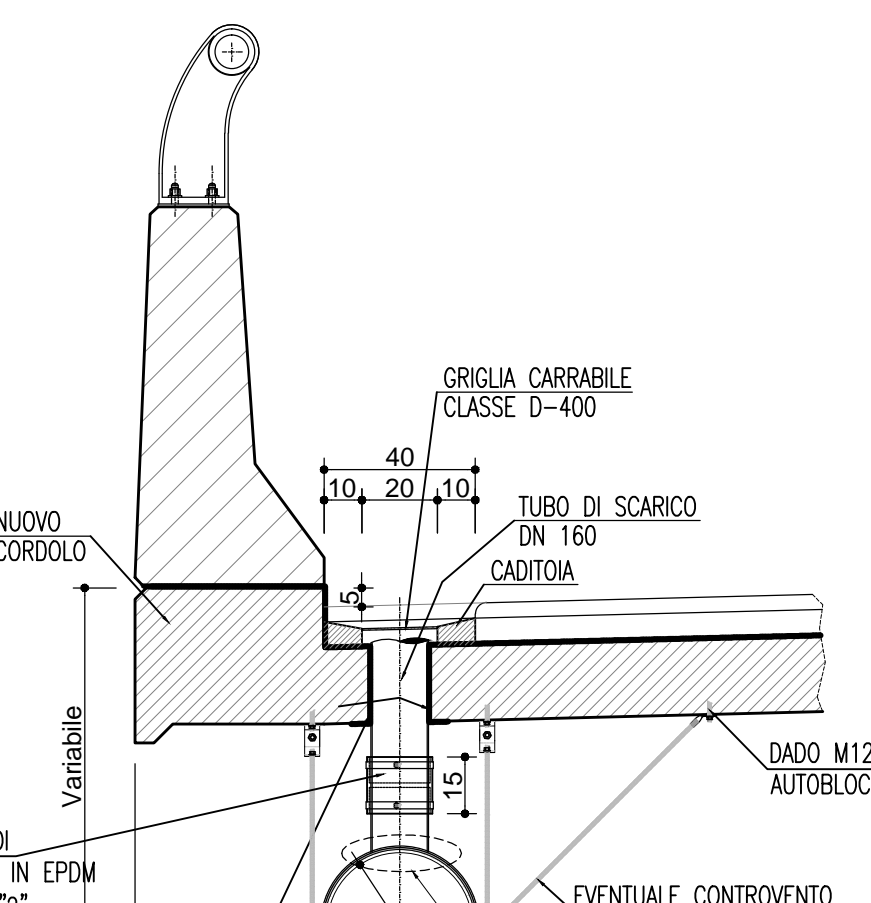
SEZIONE A-A
- SCALA 1:10 -



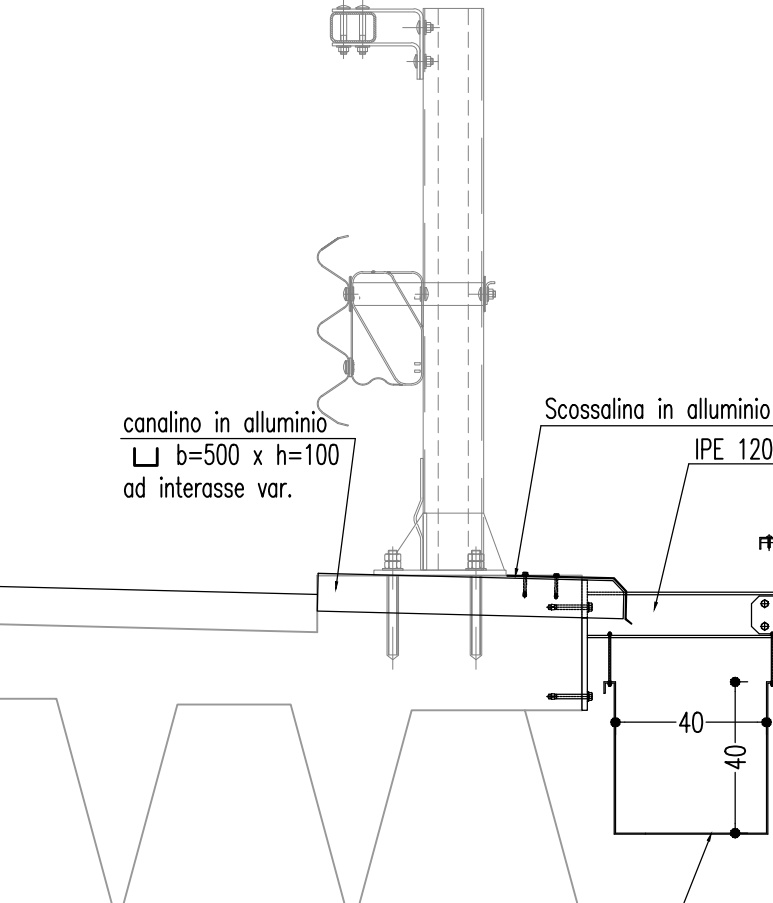
PARTICOLARE "2"
- SCALA 1:10 -



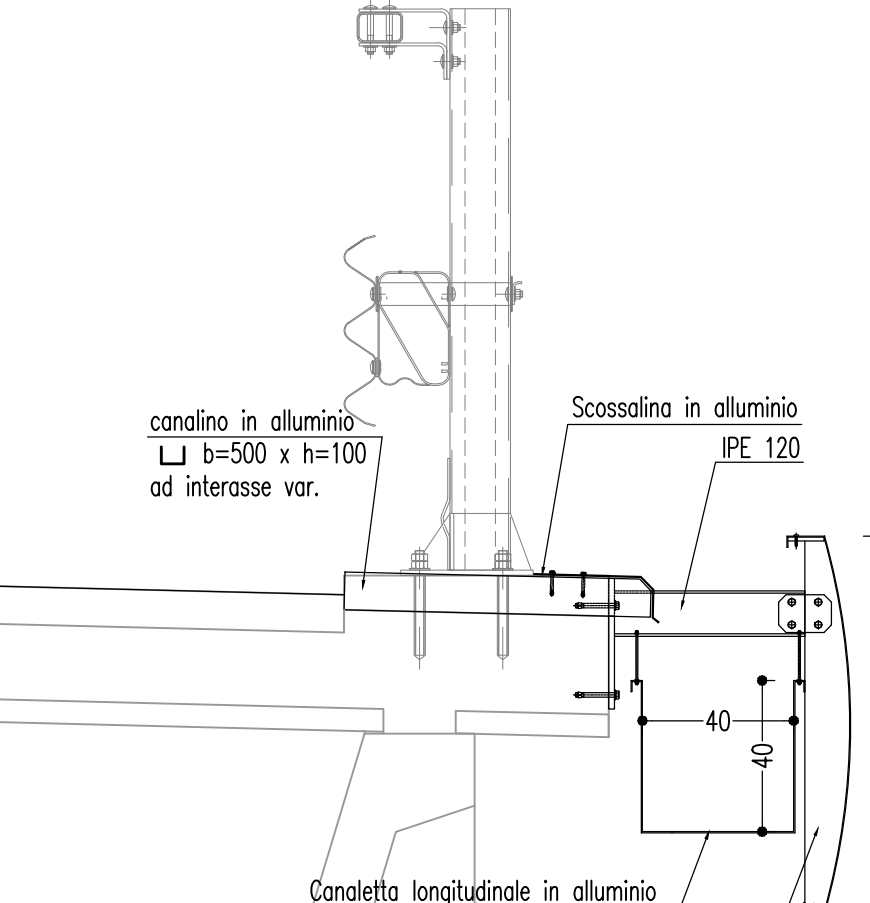
PARTICOLARE CADITOIA VIADOTTI
- SCALA 1:20 -



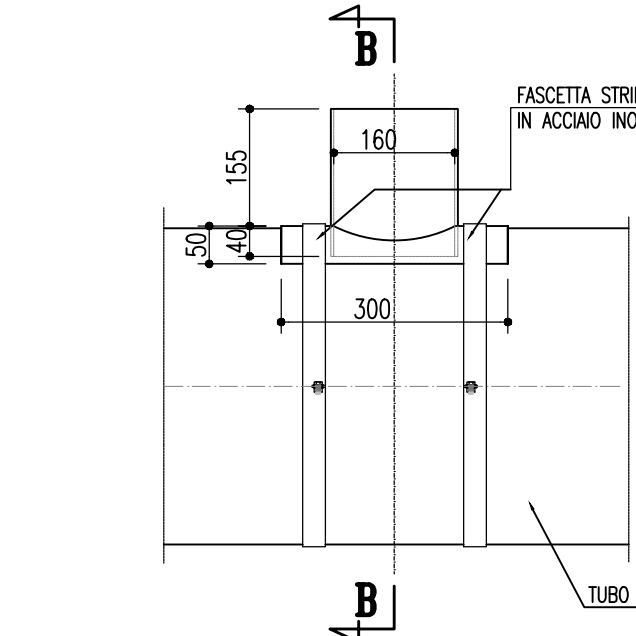
PARTICOLARE CANALE METALLICO PONTI
- SCALA 1:20 -



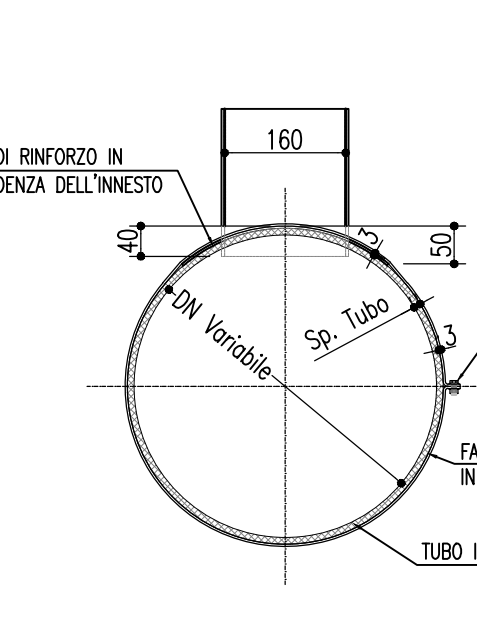
PARTICOLARE CANALE METALLICO PONTI
- SCALA 1:20 -



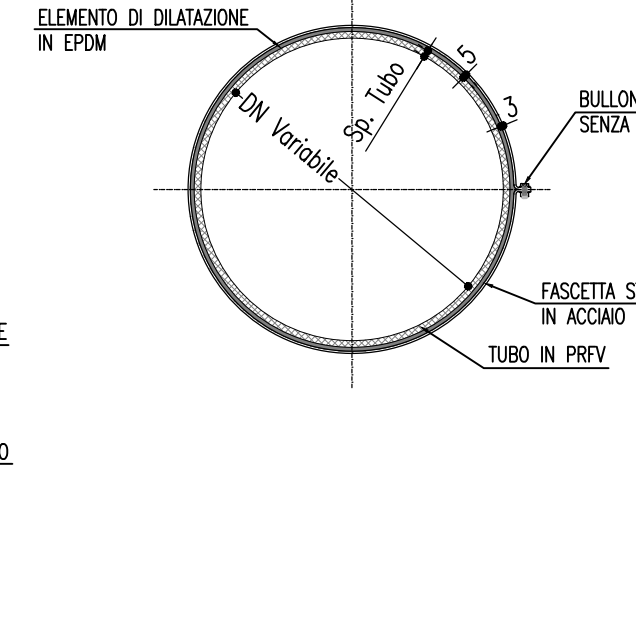
PARTICOLARE "1"
- SCALA 1:10 -



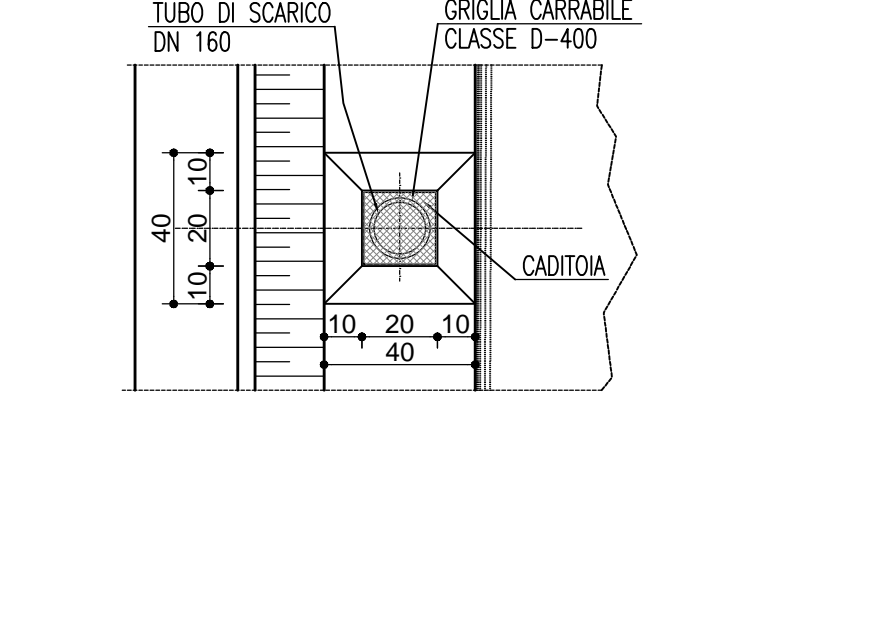
SEZIONE B-B
- SCALA 1:10 -



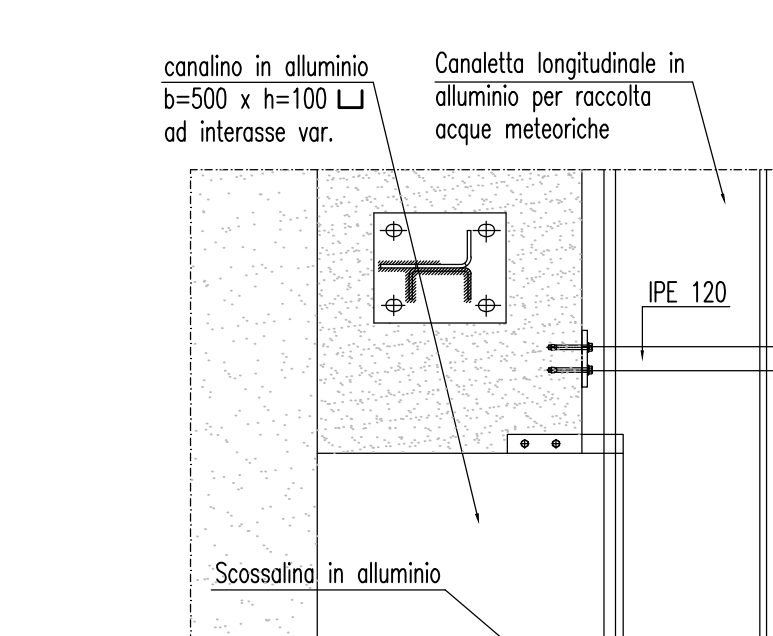
SEZIONE C-C
- SCALA 1:10 -



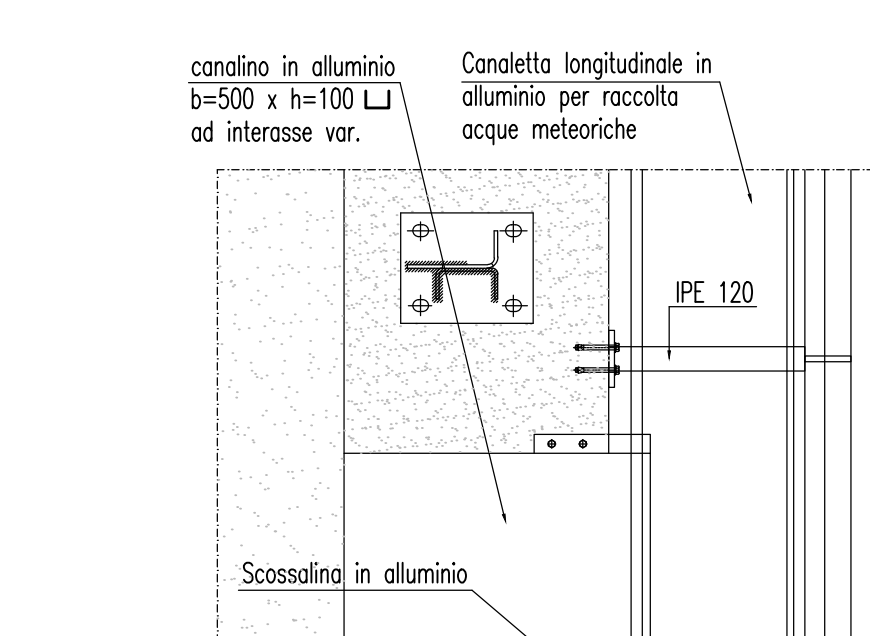
PIANTA CADITOIA



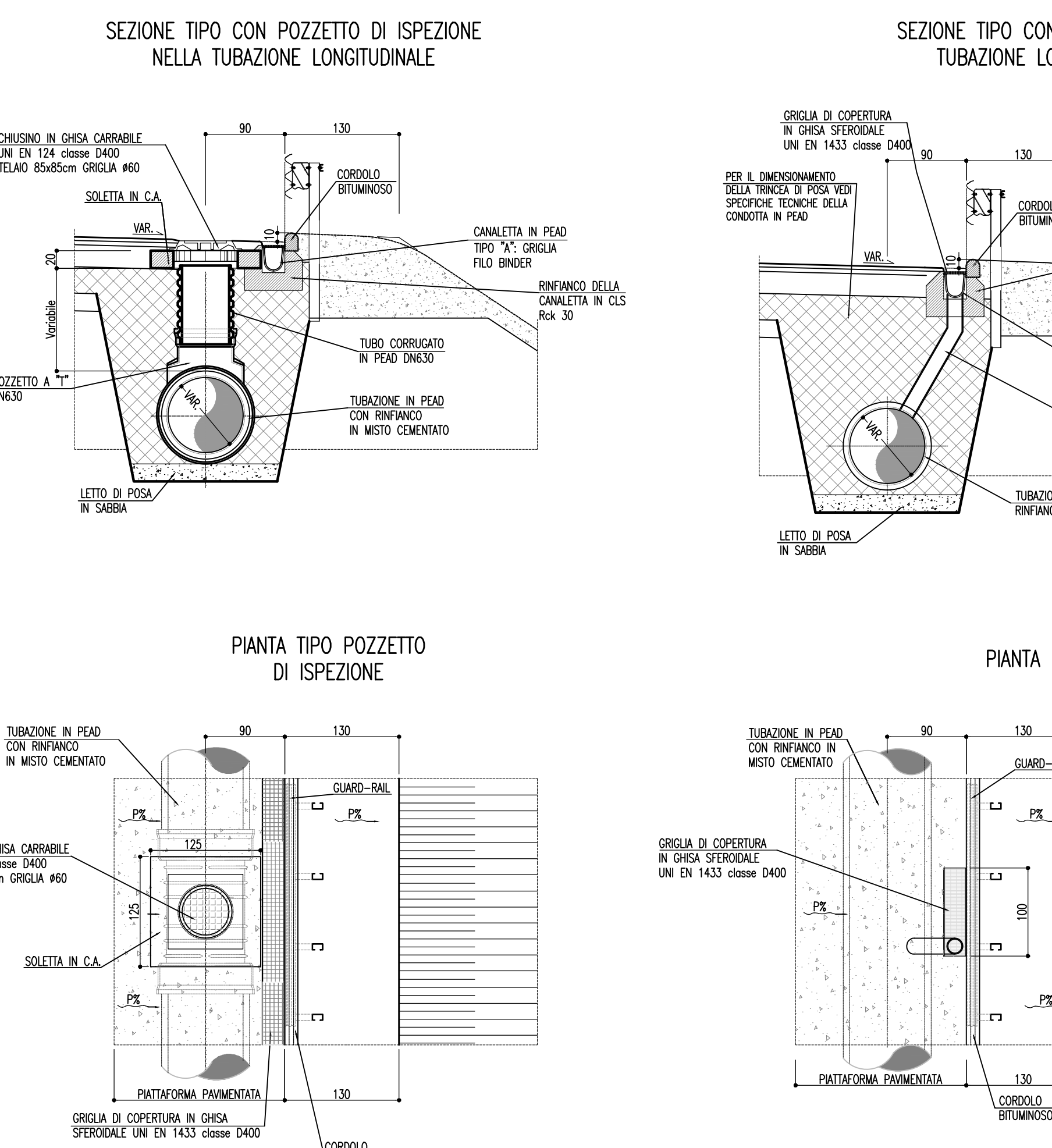
VISTA IN PIANTA



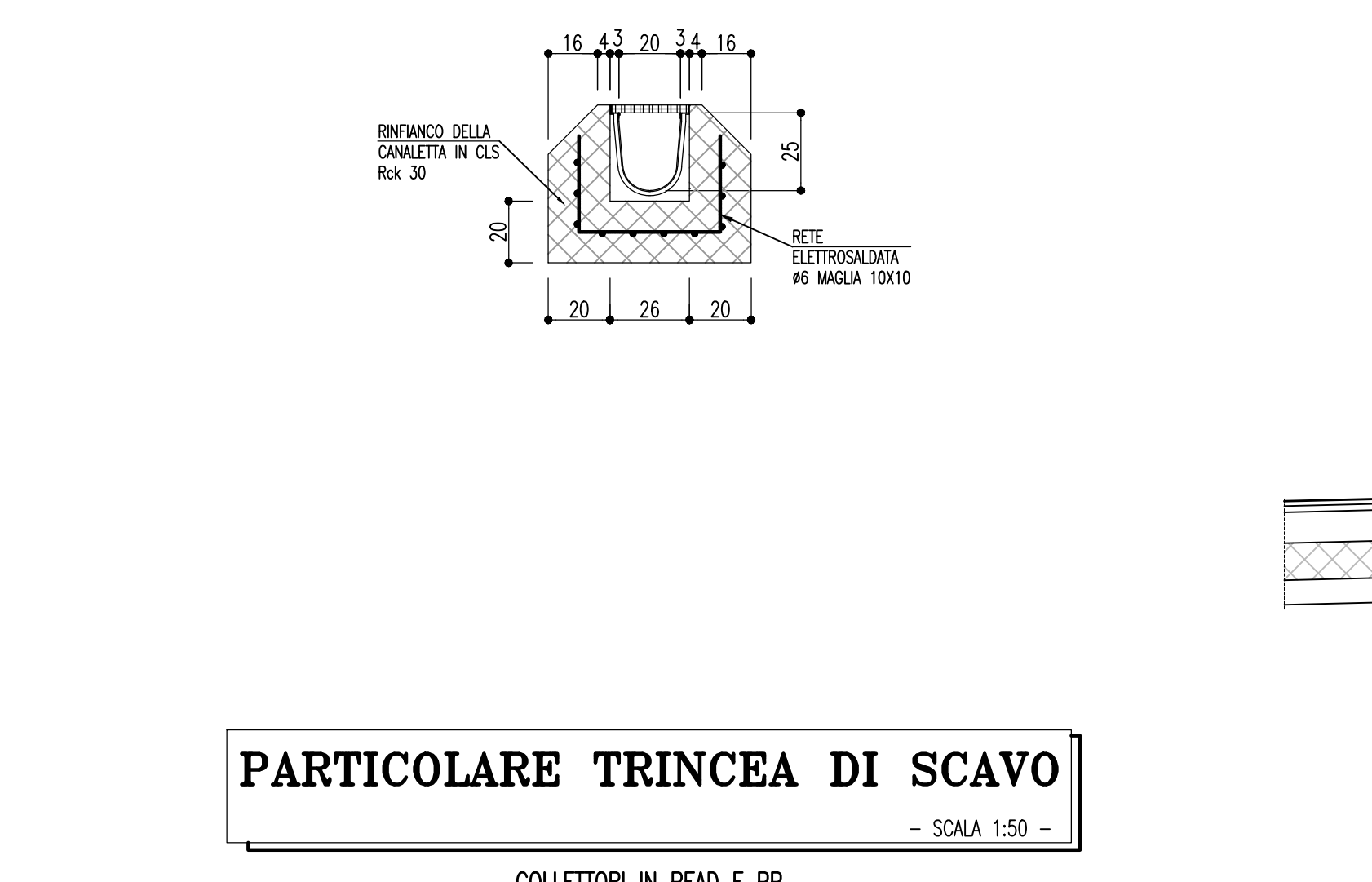
VISTA IN PIANTA



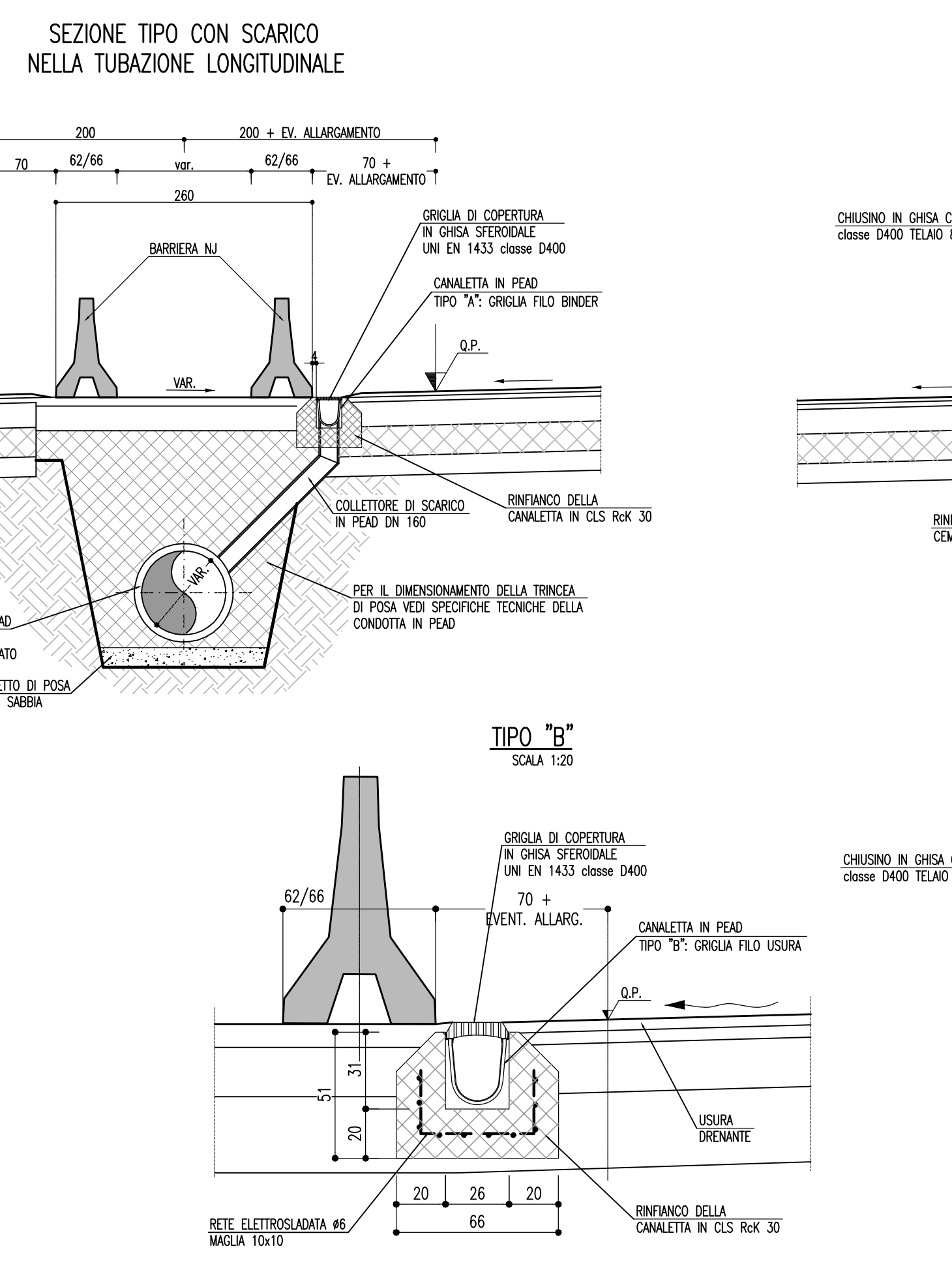
CANALETTA IN PEAD CONTINUA E DISCONTINUA IN RILEVATO
- SCALA 1:50 -



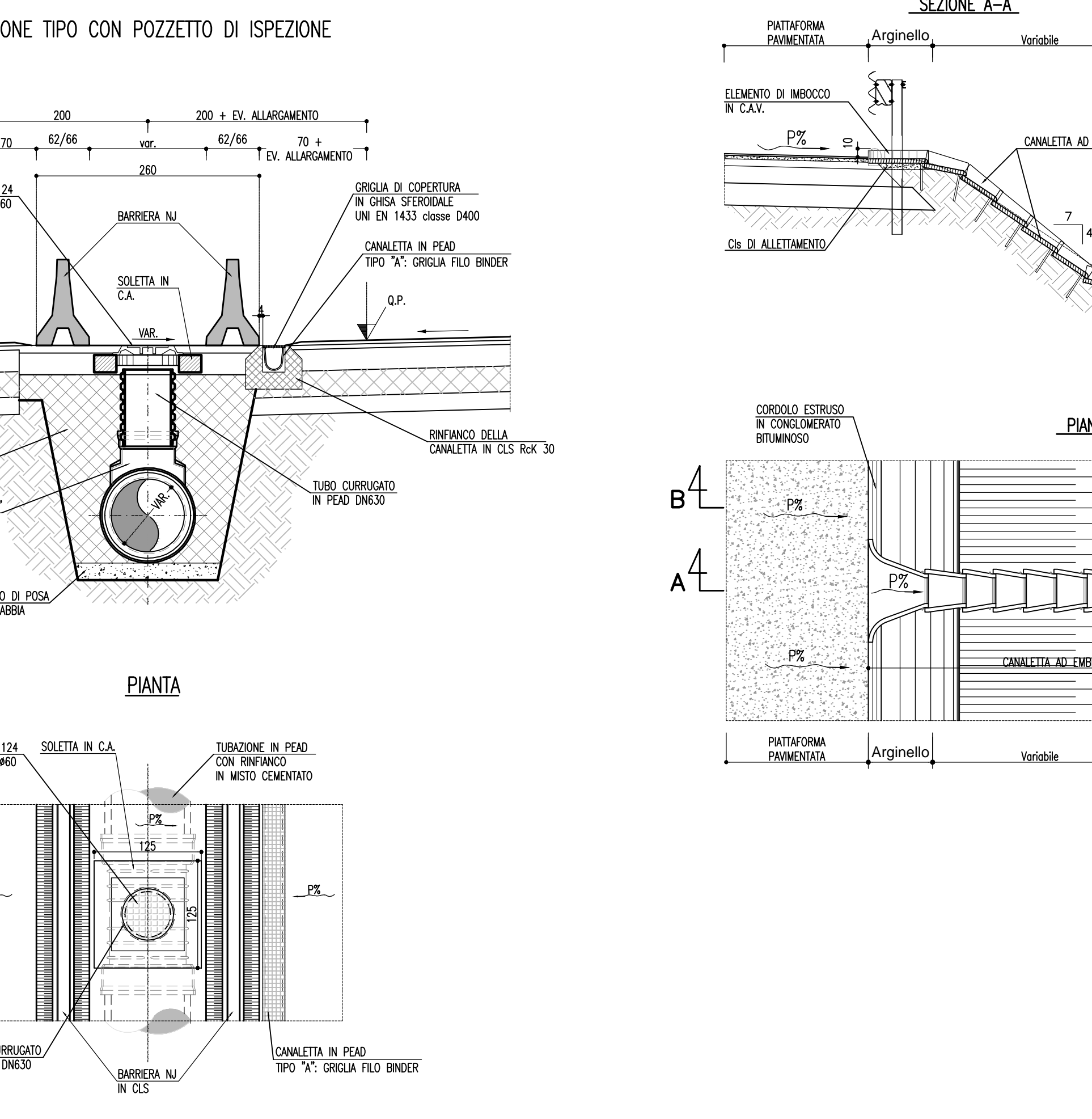
CANALETTA IN PEAD MARGINE CARREGGIATA
- SCALA 1:20 -



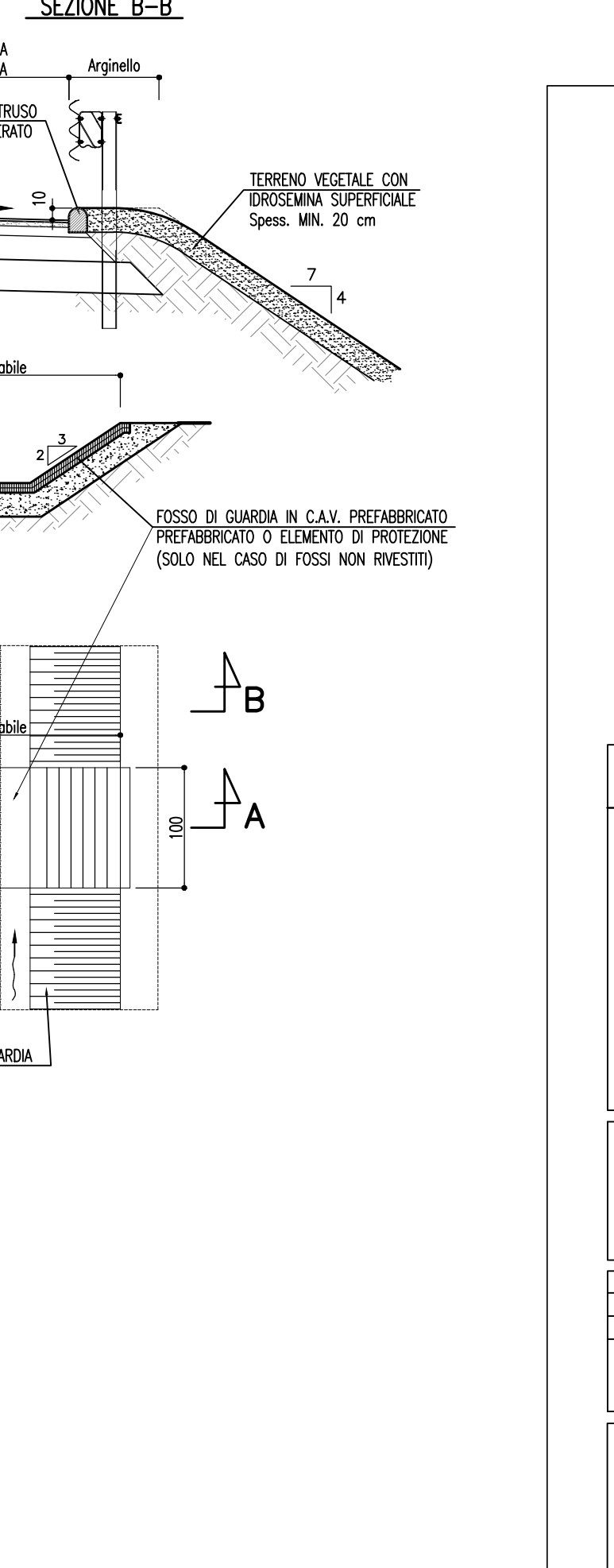
DRENAGGIO IN SPARTITRAFFICO CANALETTA GRIGLIATA CONTINUA IN PEAD
- SCALA 1:50 -



CANALETTA AD EMBRICI
- SCALA 1:50 -



PARTICOLARE TRINCEA DI SCAVO
- SCALA 1:50 -



autostrade // per l'italia

AUTOSTRADA (A13) : BOLOGNA-PADOVA
TRATTO: BOLOGNA - FERRARA

AMPLIAMENTO ALLA TERZA CORSIA
TRATTO: BOLOGNA ARCOVEGGIO - FERRARA SUD

PROGETTO DEFINITIVO

AU - CORPO AUTOSTRADALE

IDROLOGIA IDRAULICA
SISTEMA DI DRENAGGIO CORPO AUTOSTRADALE
Particolari costruttivi sistema di drenaggio tav 1 di 3

ING. PROGETTA SPECIALISTICO Ing. Paolo De Pold Ord. Ingg. Milano N. 1739	ING. RESPONSABILE INTERAZIONE Ing. Federico Ferrari Ord. Ingg. Milano N. 21082	ING. DIRETTORE TECNICO Ing. Orlando Mozzo Ord. Ingg. Pavia N. 14996
CODICE IDENTIFICATIVO 1113060001PD0000000000000000DR012400		
REDAZIONE - - - - -		