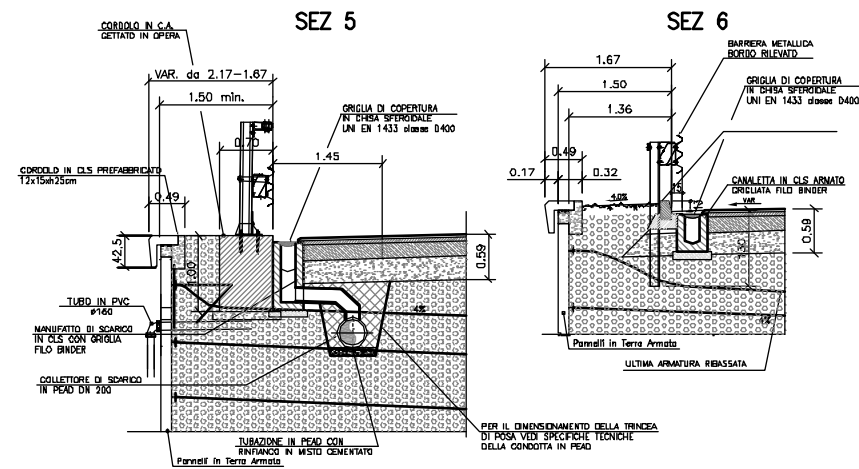


TIPOLOGIA "C" - "F"

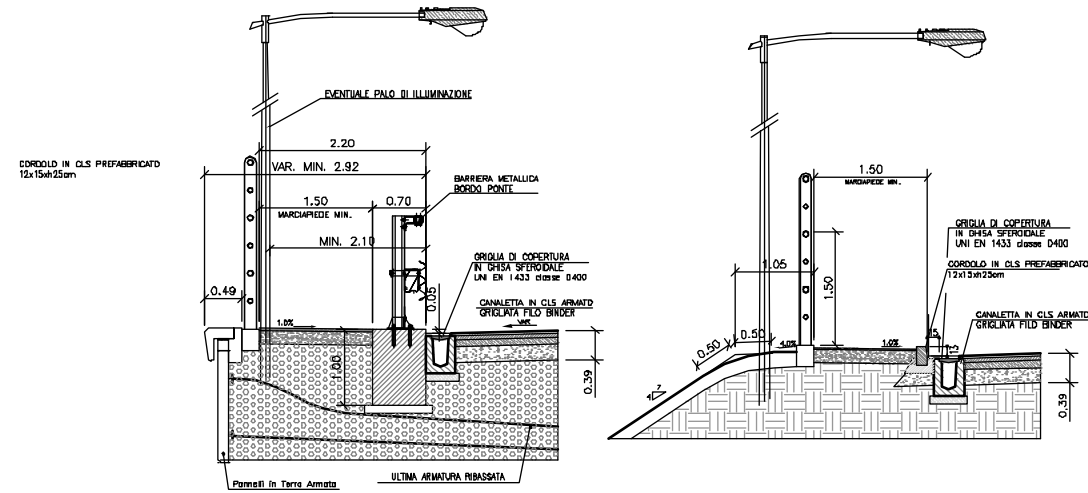
MURO IN TERRA ARMATA
(SENZA ILLUMINAZIONE)



TIPOLOGIA "E" (tratto Urbano)

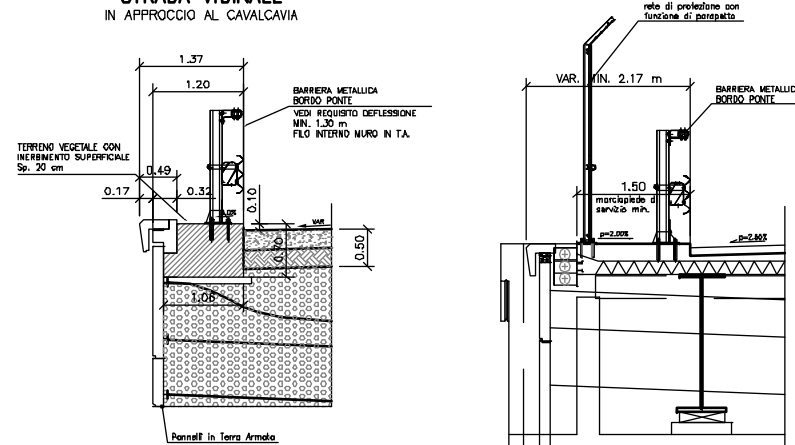
MURO IN TERRA ARMATA
RILEVATO IN APPROCCIO AL
CAVALCAVIA
SEZ 1

RILEVATO BASSO
Hmax = 3.00 m
(CON E SENZA ILLUMINAZIONE) SEZ 2



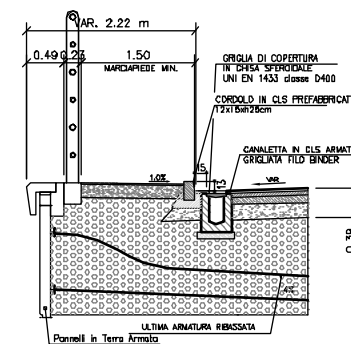
SEZ 7

STRADA VICINALE
IN APPROCCIO AL CAVALCAVIA



MURO IN TERRA ARMATA
RILEVATO BASSO
Hmax = 2.50 m

(SENZA ILLUMINAZIONE)
SEZ 3



CAVALCAVIA CON MARCIAPIEDE
SEZ 4

