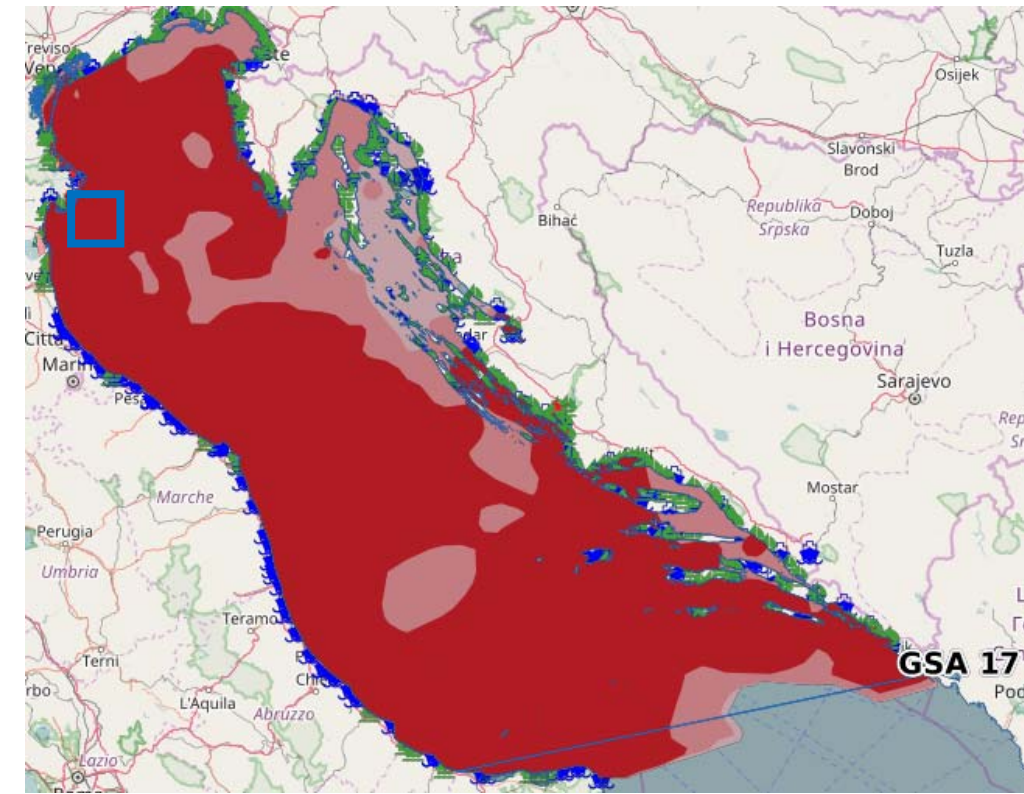
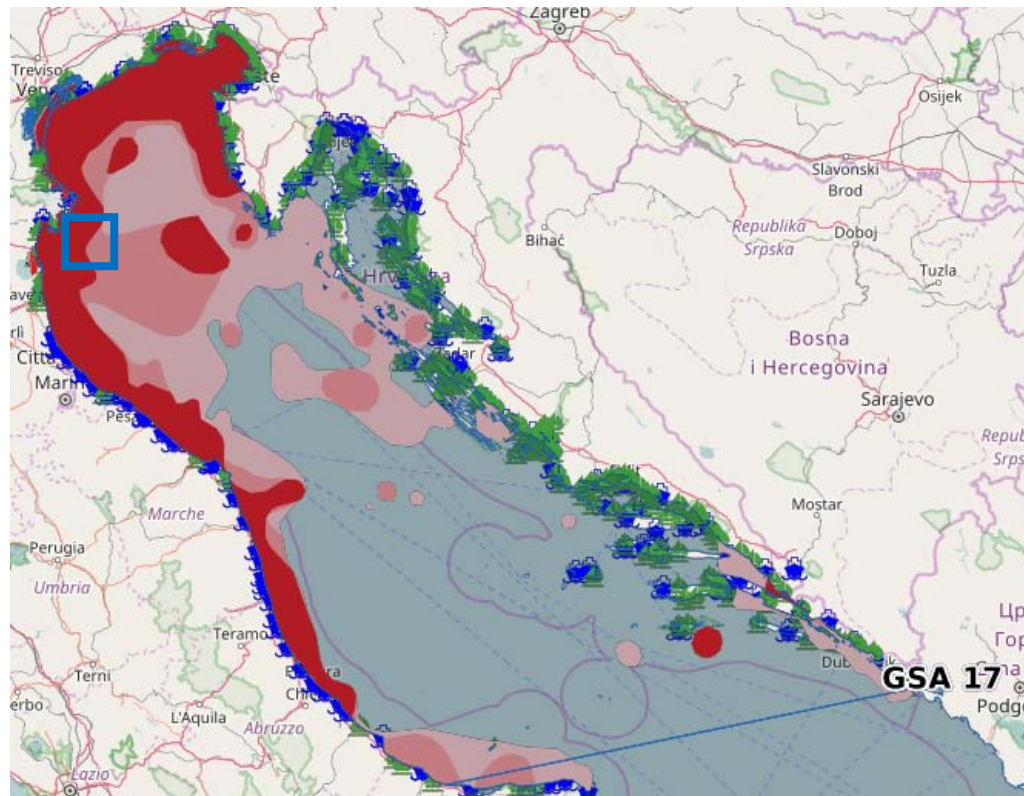


Calamario
Loligo vulgaris







Sugarello
Tachurus trachurus



Seppia
Sepia officinalis

LEGENDA

-  AREA VASTA PIATTAFORMA TEODORICO (40x40km)
-  10-100 N/km²
-  100-1000 N/km²
-  >1000 N/km²

RIFERIMENTO

ECOSEA FISH. GIS Sito Web (<http://lizmap.arpa.fvg.it/index.php/view/map/?repository=europrojects&project=ecosea>)

FIGURA 6.2

DISTRIBUZIONE DELLA DENSITÀ DI CALAMARO, SEPIA E SUGARELLO