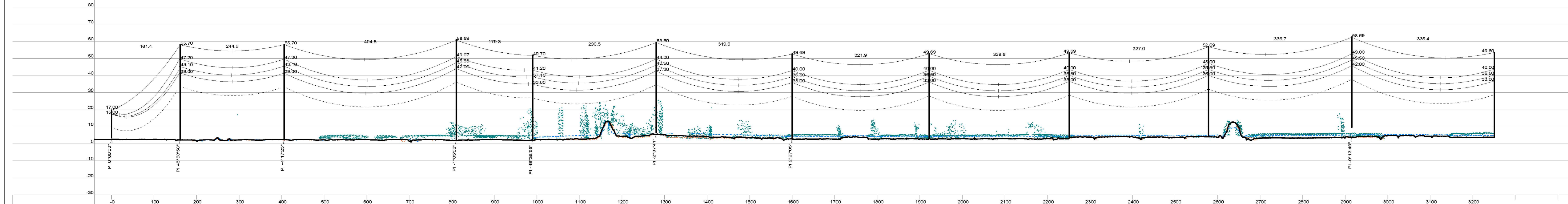
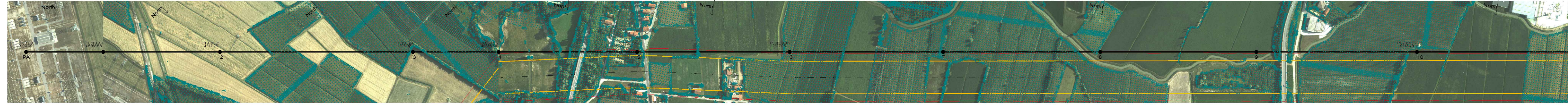


INTERVENTO A1 - Elettrodotto aereo ST a 380 kV 'S.E. Dolo - S.E. Camin'. Tratto tra i sostegni PA - 11



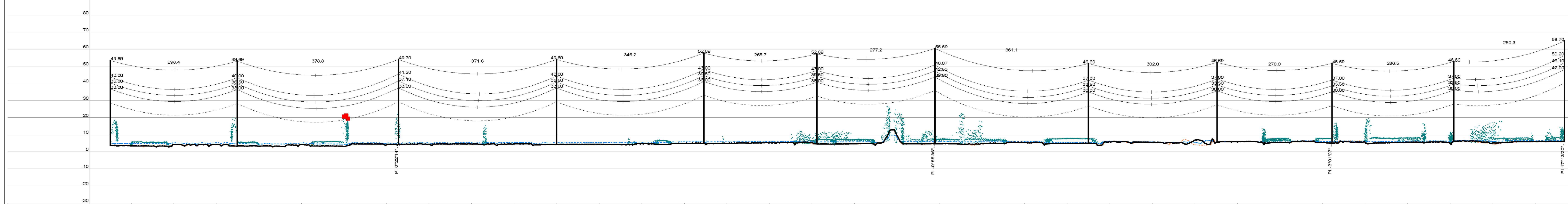
| | | | | | | | | | | | | | | | | | | | | | | | |
|----------------------------|-------------|-------------|-------------|-------------|-------------|-------------|-------------|-------------|-------------|-------------|-------------|-------------|-------------|-------------|-------------|-------------|-------------|-------------|-------------|-------------|-------------|-------------|-------------|
| Progressiva (m) | 0.00 | 161.43 | 322.86 | 484.29 | 645.72 | 807.15 | 968.58 | 1129.99 | 1291.42 | 1452.85 | 1614.28 | 1775.71 | 1937.14 | 2098.57 | 2259.99 | 2421.42 | 2582.85 | 2744.28 | 2905.71 | 3067.14 | 3228.57 | 3389.99 | |
| Quota terreno (m) | 2.67 | 2.28 | 2.37 | 2.04 | 1.99 | 2.82 | 2.84 | 3.07 | 3.53 | 4.08 | 3.68 | 3.75 | 3.66 | 3.75 | 3.68 | 3.66 | 3.66 | 3.66 | 3.66 | 3.66 | 3.66 | 3.66 | 3.66 |
| Numero sostegno | PA | 1 | 2 | 3 | 4 | 5 | 6 | 7 | 8 | 9 | 10 | 11 | 12 | 13 | 14 | 15 | 16 | 17 | 18 | 19 | 20 | 21 | 22 |
| Tipo sostegno | Port. | AN | AN | PST | AN | MST | AN | MST | MST | MST | MST | MST | MST | MST | MST | MST | MST | MST | MST | MST | MST | MST | MST |
| Tipo armamento | A | A | A | M | A | M | A | M | M | M | M | M | M | M | M | M | M | M | M | M | M | M | M |
| Altezza utile / totale (m) | 14.00/17.00 | 38.00/56.70 | 38.00/56.70 | 42.00/59.69 | 33.00/48.70 | 30.00/43.69 | 33.00/48.70 | 30.00/43.69 | 33.00/48.70 | 30.00/43.69 | 30.00/43.69 | 30.00/43.69 | 30.00/43.69 | 30.00/43.69 | 30.00/43.69 | 30.00/43.69 | 30.00/43.69 | 30.00/43.69 | 30.00/43.69 | 30.00/43.69 | 30.00/43.69 | 30.00/43.69 | 30.00/43.69 |
| Distancia orizzontale (m) | 0.00 | 161.43 | 322.86 | 484.29 | 645.72 | 807.15 | 968.58 | 1129.99 | 1291.42 | 1452.85 | 1614.28 | 1775.71 | 1937.14 | 2098.57 | 2259.99 | 2421.42 | 2582.85 | 2744.28 | 2905.71 | 3067.14 | 3228.57 | 3389.99 | |



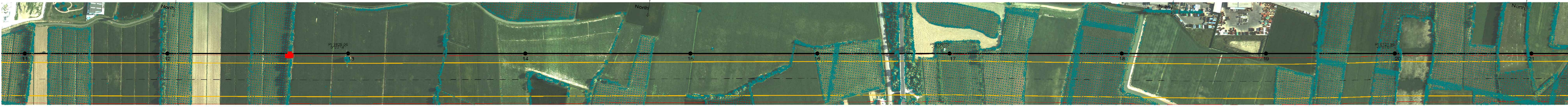
Legenda

- Vegetazione interferente (D.M. 449/88 e D.Lgs 81/08 All. IX)
- Vegetazione interferente per ribaltamento
- Nota: Condotto visualizzato nella condizione di Massima Freccia
- Riferimento distanza minima dai conduttori in Massima Freccia
- Perimetro futura idrovia

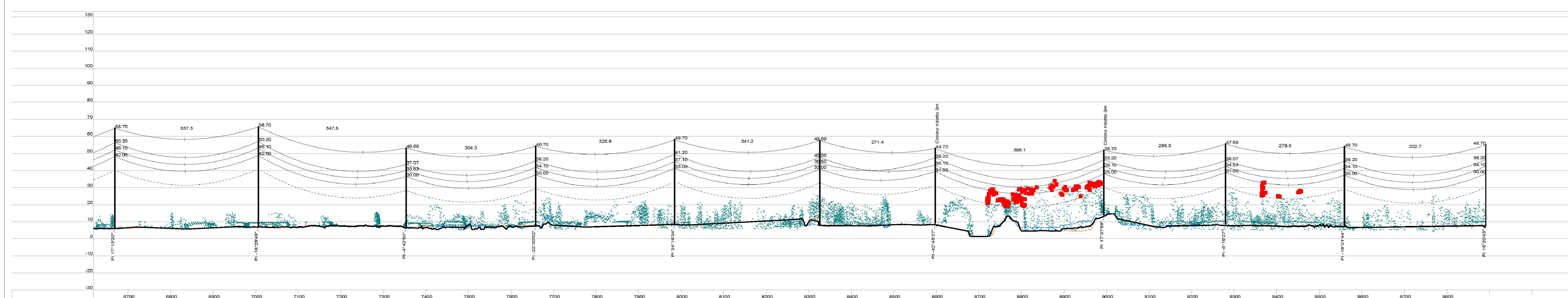
INTERVENTO A1 - Elettrodotto aereo ST a 380 kV 'S.E. Dolo - S.E. Camin'. Tratto tra i sostegni 11 - 22



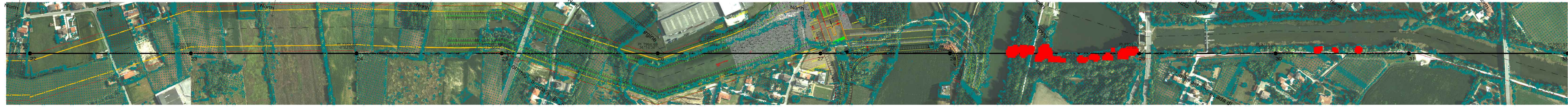
| | | | | | | | | | | | | | | | | | | | | | | | | |
|----------------------------|-------------|-------------|-------------|-------------|-------------|-------------|-------------|-------------|-------------|-------------|-------------|-------------|-------------|-------------|-------------|-------------|-------------|-------------|-------------|-------------|-------------|-------------|-------------|-------------|
| Progressiva (m) | 3390.62 | 3546.25 | 3701.88 | 3857.51 | 4013.14 | 4168.77 | 4324.40 | 4480.03 | 4635.66 | 4791.29 | 4946.92 | 5102.55 | 5258.18 | 5413.81 | 5569.44 | 5725.07 | 5880.70 | 6036.33 | 6191.96 | 6347.59 | 6503.22 | 6658.85 | 6814.48 | |
| Quota terreno (m) | 3.75 | 3.33 | 4.32 | 4.33 | 5.06 | 4.59 | 4.73 | 5.01 | 5.02 | 6.09 | 6.11 | 6.11 | 6.11 | 6.11 | 6.11 | 6.11 | 6.11 | 6.11 | 6.11 | 6.11 | 6.11 | 6.11 | 6.11 | 6.11 |
| Numero sostegno | 11 | 12 | 13 | 14 | 15 | 16 | 17 | 18 | 19 | 20 | 21 | 22 | 23 | 24 | 25 | 26 | 27 | 28 | 29 | 30 | 31 | 32 | 33 | 34 |
| Tipo sostegno | MST | MST | AN | MST | MST | MST | MST | MST | MST | MST | MST | MST | MST | MST | MST | MST | MST | MST | MST | MST | MST | MST | MST | MST |
| Tipo armamento | M | M | A | M | M | M | M | M | M | M | M | M | M | M | M | M | M | M | M | M | M | M | M | M |
| Altezza utile / totale (m) | 33.00/48.69 | 33.00/48.69 | 33.00/48.69 | 33.00/48.69 | 36.00/52.69 | 36.00/52.69 | 36.00/52.69 | 36.00/52.69 | 36.00/52.69 | 36.00/52.69 | 36.00/52.69 | 36.00/52.69 | 36.00/52.69 | 36.00/52.69 | 36.00/52.69 | 36.00/52.69 | 36.00/52.69 | 36.00/52.69 | 36.00/52.69 | 36.00/52.69 | 36.00/52.69 | 36.00/52.69 | 36.00/52.69 | 36.00/52.69 |
| Distancia orizzontale (m) | 3390.62 | 286.45 | 3146.28 | 378.78 | 3528.05 | 371.69 | 4299.63 | 348.16 | 4881.17 | 266.76 | 4911.64 | 277.22 | 5188.78 | 381.14 | 5669.91 | 302.05 | 5881.95 | 270.02 | 6121.98 | 288.49 | 6408.46 | 280.25 | 6698.71 | 280.25 |



INTERVENTO A1 - Elettrodotto aereo ST a 380 kV 'S.E. Dolo - S.E. Camin'. Tratto tra i sostegni 22 - 33



| | | | | | | | | | | | | | | | | | | | | | | | | |
|----------------------------|-------------|-------------|-------------|-------------|-------------|-------------|-------------|-------------|-------------|-------------|-------------|-------------|-------------|-------------|-------------|-------------|-------------|-------------|-------------|-------------|-------------|-------------|-------------|-------------|
| Progressiva (m) | 6888.71 | 7005.97 | 7123.23 | 7240.49 | 7357.75 | 7475.01 | 7592.27 | 7709.53 | 7826.79 | 7944.05 | 8061.31 | 8178.57 | 8295.83 | 8413.09 | 8530.35 | 8647.61 | 8764.87 | 8882.13 | 8999.39 | 9116.65 | 9233.91 | 9351.17 | 9468.43 | 9585.69 |
| Quota terreno (m) | 6.11 | 6.03 | 6.50 | 6.33 | 7.54 | 6.33 | 6.26 | 7.83 | 8.26 | 9.29 | 9.31 | 9.31 | 9.31 | 9.31 | 9.31 | 9.31 | 9.31 | 9.31 | 9.31 | 9.31 | 9.31 | 9.31 | 9.31 | 9.31 |
| Numero sostegno | 22 | 23 | 24 | 25 | 26 | 27 | 28 | 29 | 30 | 31 | 32 | 33 | 34 | 35 | 36 | 37 | 38 | 39 | 40 | 41 | 42 | 43 | 44 | 45 |
| Tipo sostegno | AN | AN | PST | AN | MST | AN | MST | AN | MST | MST | MST | MST | MST | MST | MST | MST | MST | MST | MST | MST | MST | MST | MST | MST |
| Tipo armamento | A | A | M | A | M | A | M | A | M | M | M | M | M | M | M | M | M | M | M | M | M | M | M | M |
| Altezza utile / totale (m) | 42.00/56.70 | 33.00/48.69 | 42.00/56.70 | 30.00/43.69 | 30.00/43.69 | 30.00/43.69 | 33.00/48.69 | 30.00/43.69 | 33.00/48.69 | 30.00/43.69 | 30.00/43.69 | 30.00/43.69 | 30.00/43.69 | 30.00/43.69 | 30.00/43.69 | 30.00/43.69 | 30.00/43.69 | 30.00/43.69 | 30.00/43.69 | 30.00/43.69 | 30.00/43.69 | 30.00/43.69 | 30.00/43.69 | 30.00/43.69 |
| Distancia orizzontale (m) | 6888.71 | 337.26 | 7005.97 | 347.45 | 7123.23 | 304.33 | 7240.49 | 328.93 | 7357.75 | 341.17 | 7475.01 | 311.77 | 7592.27 | 306.10 | 7709.53 | 284.30 | 7826.79 | 279.44 | 7944.05 | 332.68 | 8061.31 | 332.68 | 8178.57 | 332.68 |



| | | | | |
|------------------------------|----------------|--|-------------------------|------------|
| REVISIONI | | | | |
| 0 | 15/09/16 | Finire emissivo | 3. Sistema | 3. Sistema |
| N. | DATA | DESCRIZIONE | ELABORATO | VERIFICATO |
| PROGETTO | | CODIFICA DELL'ELABORATO | | |
| RICAVATO DAL DOC. TERNA | | | | |
| CLASSIFICAZIONE DI SICUREZZA | | DCGR10100BSA00596_23 Razionalizzazione rete AT aree Venezia e Padova STUDIO DI IMPATTO AMBIENTALE IMPFI | | |
| NOME DEL FILE | SCALA CAD | FORMATO | SCALA | FOGLIO |
| DCGR10100BSA00596_23.dwg | 1 unità = 1 mm | - | X = 1:4000 / Y = 1:1000 | 1 / 3 |

Questo documento contiene informazioni di proprietà Terna S.p.A. e deve essere utilizzato esclusivamente dal destinatario in relazione alle finalità per le quali è stato fornito. È vietata qualsiasi forma di riproduzione o di divulgazione senza l'esplicito consenso di Terna S.p.A. and it will have to be used exclusively for the purposes for which it has been furnished. Whichever form of spreading or reproduction without the written permission of Terna S.p.A. is prohibited.