

GENERAL NOTES

- ALL ELEVATION ARE REFERRED AT EL. $\nabla 0.00 = \nabla 8400$
- ALL DRAINAGE, IN THE LOWER POINT OF THE PIPE LINE, HAVE TO BE COLLECTED TO NEAREST EXISTING SEWER
- ALL DIMENSION ARE SHOWN IN mm
- \blacktriangledown SHOWN CENTER OF PIPE OR CENTER LINE EQUIPMENT
- ∇ SHOWN BOTTOM OF PIPE OR GENERIC ELEVATION
- PIPING SUPPORT HAVE TO BE DEFINING DURING DETAIL ENGINEERING
- ROUTING AND DIMENSION HAVE TO BE CHECKED OR CONFIRMED DURING DETAIL ENGINEERING

LEGEND

- P.F. FIXED POINT
- G GUIDE
- A SUPPORT

Typical SUPPORT

Valid for pipe $10'' < \varnothing < 24''$

Typical GUIDE

Valid for pipe $10'' < \varnothing < 24''$

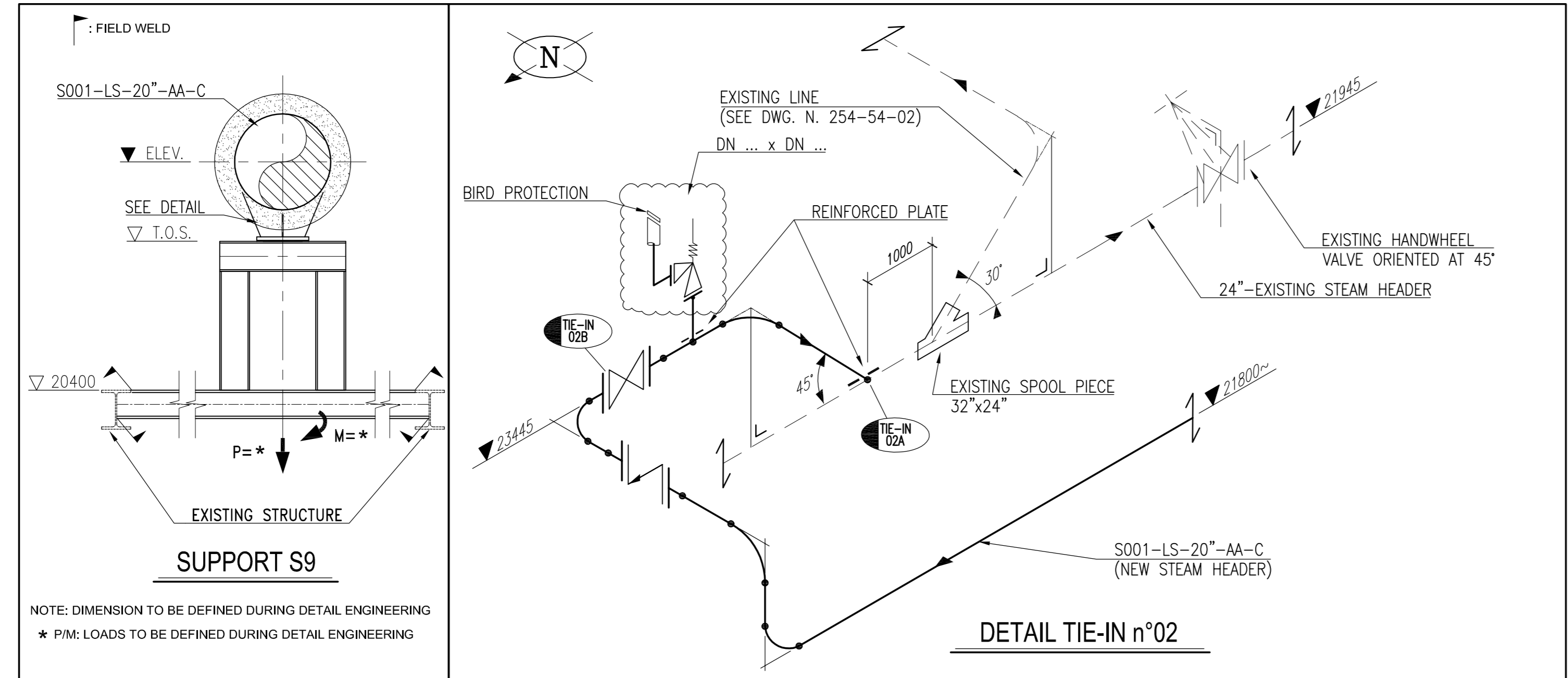
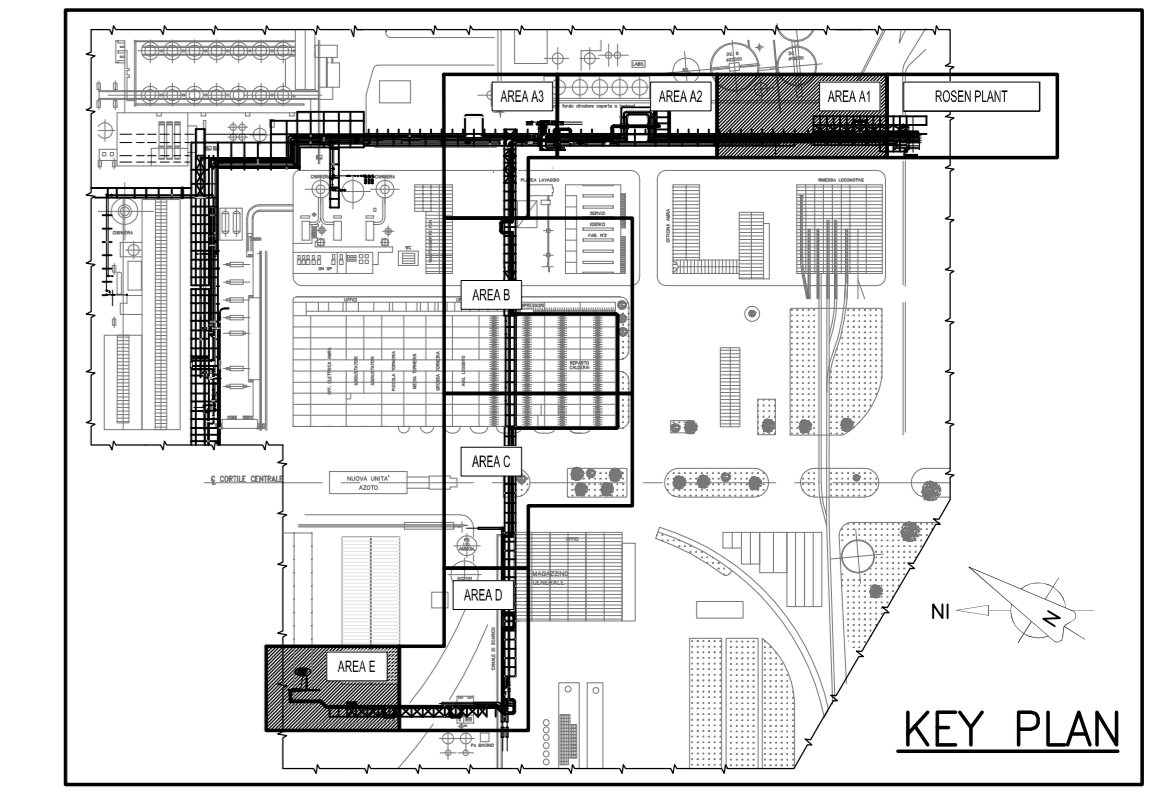
Typical FIXED POINT ON EXISTING PIPE RACK

Valid for pipe $10'' < \varnothing < 24''$

Typical For Drainage

- PIPE: 12" FOR PIPELINE $10'' < \varnothing < 24''$
- PIPE: 1.5" FOR DRAINAGE OF PIPELINE $10'' < \varnothing < 24''$

Typical For Drainage Collecting



Documenti di Riferimento

Doc. number	Title
ROS2017-560-1261375-001	Key Plan
ROS2017-560-1261375-000	General Layout

Note: This Drawing was developed starting from Dwg. Solvey N. 254-54-02/03

Rev.	Y	M	D	Revision	Drawn	Checked	Approved	Validated
01								

SOLVAY CHIMICA ITALIA S.P.A.

ROSEN 2017 CONVERSION

BASIC DESIGN

MAJOR PIPING LAYOUT

AREA "E"

TRACTEBEL Engineering
GDF SVZ

Scale: 1:100

Sheet: 01 of 01

Project: P_008561.2004

Project Number: ROS2017 560 1261375 008 01