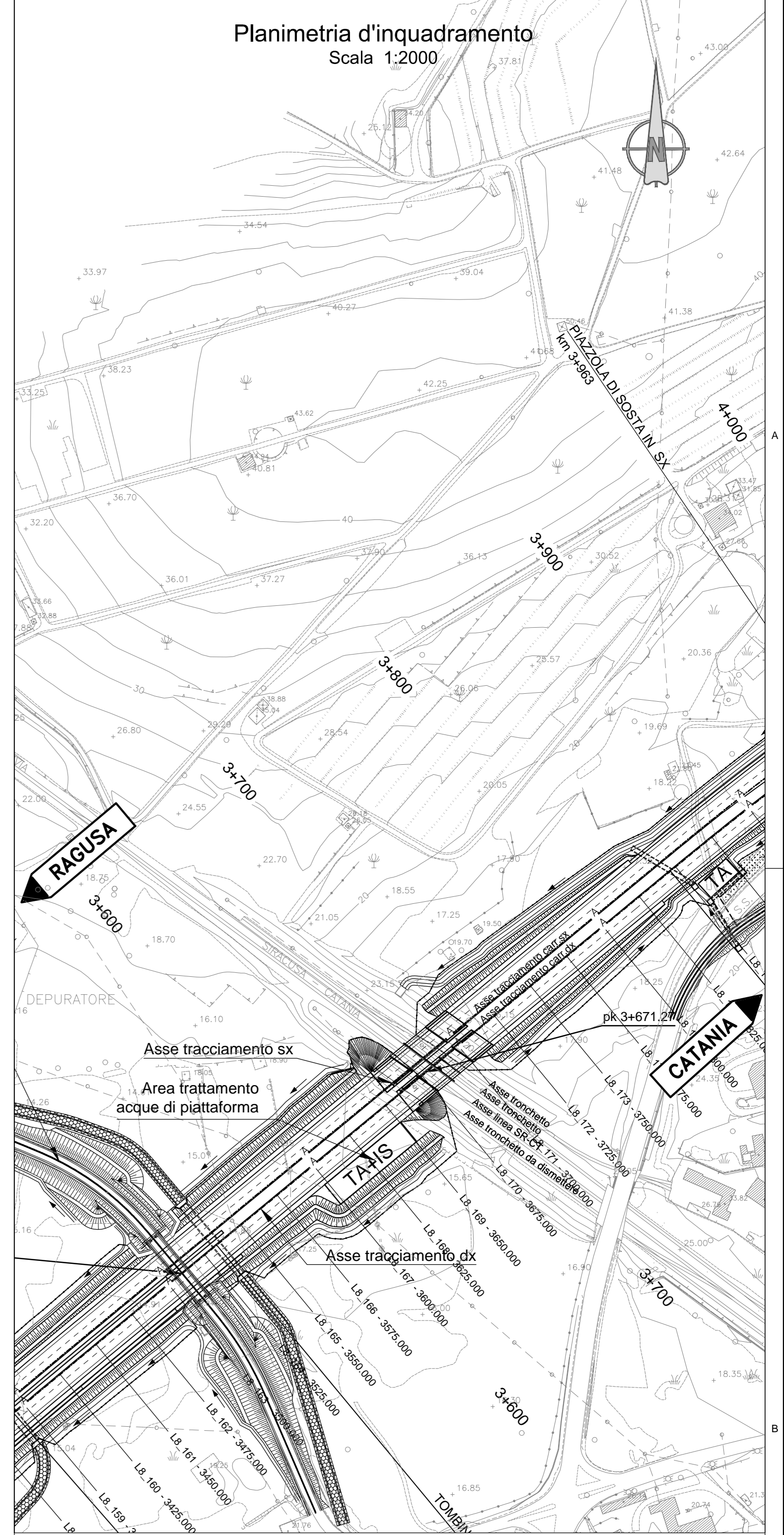
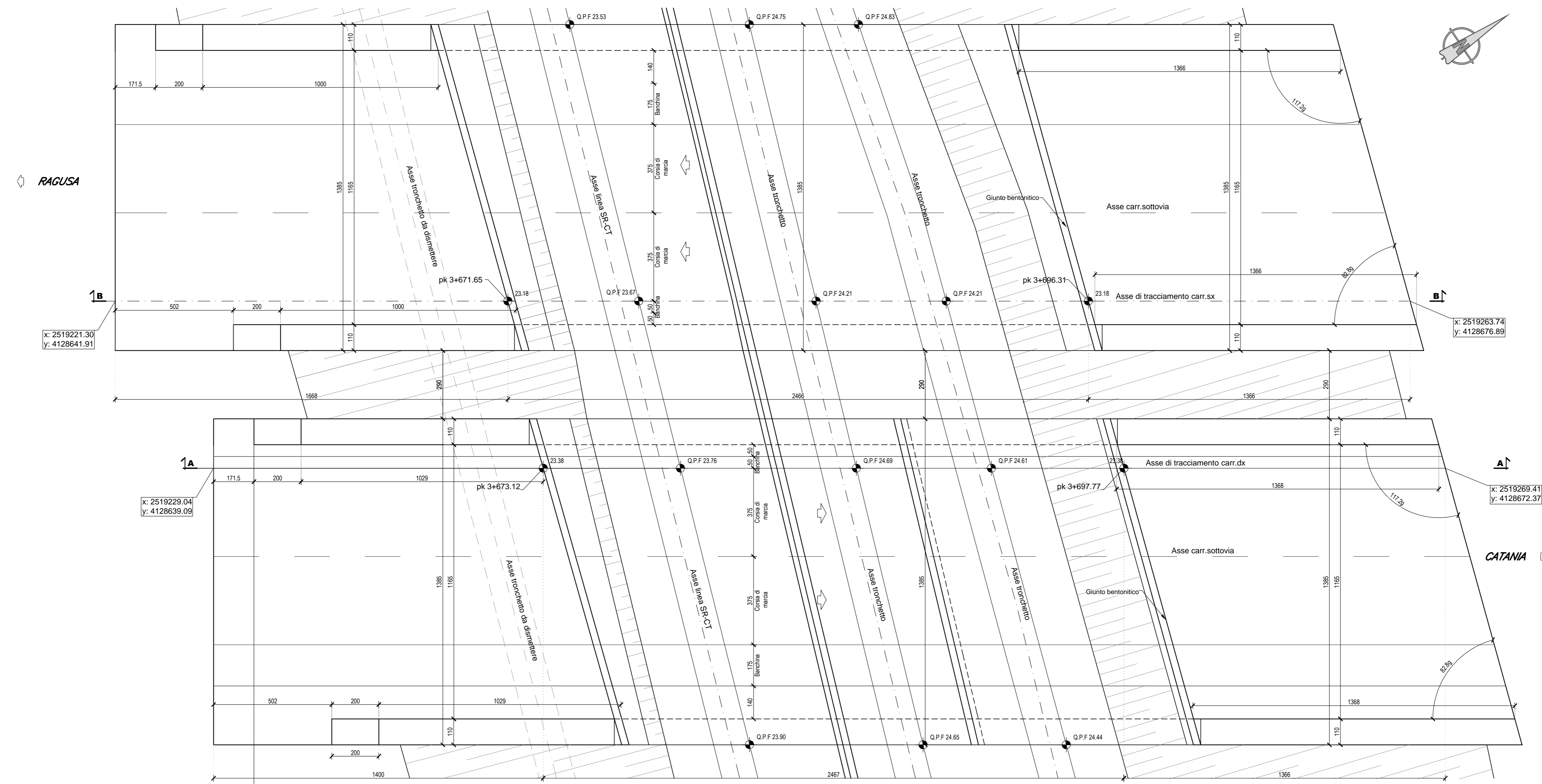
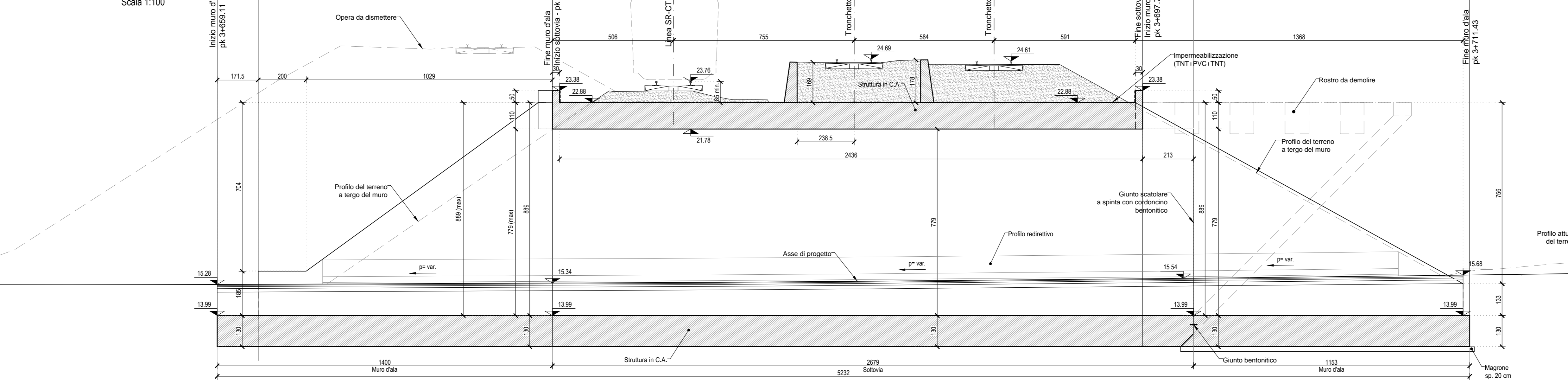


Carpenteria a quota ferrovia
Scala 1:100



Carpenteria Sezione A-A
Scala 1:100

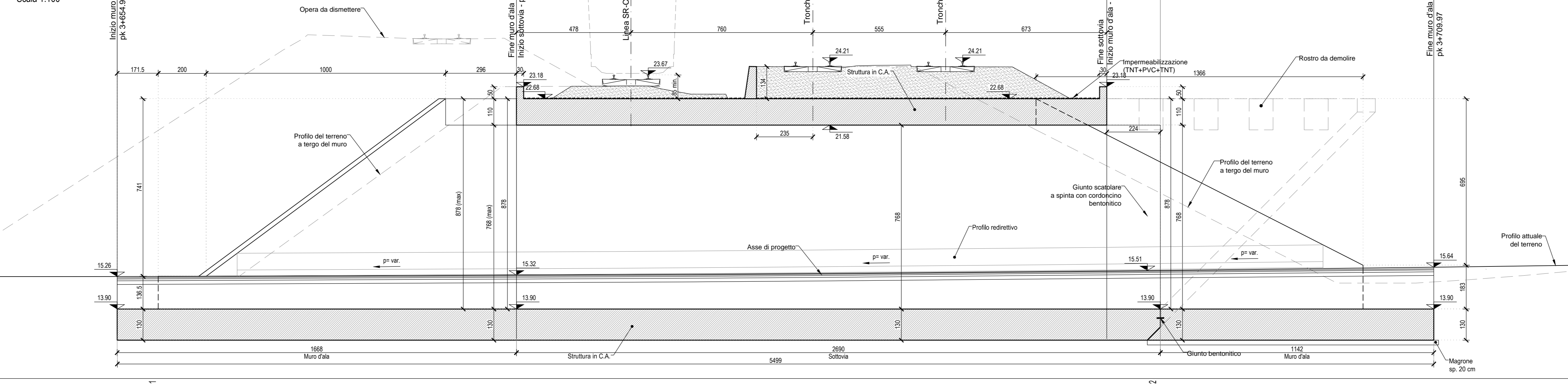


NOTA: Per la tabella materiali fare riferimento all'elaborato D01-T1L8-OAF00-1-DX-001-OA.

TABELLA INCIDENZA SCOTTAPASSO (kg/m ²)	
SCATOLARE	
Soletta di fondazione	85
Soletta di copertura	80
Piedisti	100
MURI D'ALA LATO RAGUSA	
Soletta di fondazione	100
Piedisti	110
MURI D'ALA LATO CATANIA	
Soletta di fondazione	120
Piedisti	130

NUMERO SEZIONI	QUOTE PROGETTO	QUOTE TERRENO	DISTANZE PROGRESSIVE
1	15.28	15.30	-3860.00
2	15.28	15.30	-3860.00
3	15.28	15.30	-3860.00
4	15.28	15.30	-3860.00
5	15.28	15.30	-3860.00
6	15.28	15.30	-3860.00
7	15.28	15.30	-3860.00
8	15.28	15.30	-3860.00
9	15.28	15.30	-3860.00
10	15.28	15.30	-3860.00
11	15.28	15.30	-3860.00
12	15.28	15.30	-3860.00
13	15.28	15.30	-3860.00
14	15.28	15.30	-3860.00
15	15.28	15.30	-3860.00
16	15.28	15.30	-3860.00
17	15.28	15.30	-3860.00
18	15.28	15.30	-3860.00
19	15.28	15.30	-3860.00
20	15.28	15.30	-3860.00
21	15.28	15.30	-3860.00
22	15.28	15.30	-3860.00
23	15.28	15.30	-3860.00
24	15.28	15.30	-3860.00
25	15.28	15.30	-3860.00
26	15.28	15.30	-3860.00
27	15.28	15.30	-3860.00
28	15.28	15.30	-3860.00
29	15.28	15.30	-3860.00
30	15.28	15.30	-3860.00
31	15.28	15.30	-3860.00
32	15.28	15.30	-3860.00
33	15.28	15.30	-3860.00
34	15.28	15.30	-3860.00
35	15.28	15.30	-3860.00
36	15.28	15.30	-3860.00
37	15.28	15.30	-3860.00
38	15.28	15.30	-3860.00
39	15.28	15.30	-3860.00
40	15.28	15.30	-3860.00
41	15.28	15.30	-3860.00
42	15.28	15.30	-3860.00
43	15.28	15.30	-3860.00
44	15.28	15.30	-3860.00
45	15.28	15.30	-3860.00
46	15.28	15.30	-3860.00
47	15.28	15.30	-3860.00
48	15.28	15.30	-3860.00
49	15.28	15.30	-3860.00
50	15.28	15.30	-3860.00
51	15.28	15.30	-3860.00
52	15.28	15.30	-3860.00
53	15.28	15.30	-3860.00
54	15.28	15.30	-3860.00
55	15.28	15.30	-3860.00
56	15.28	15.30	-3860.00
57	15.28	15.30	-3860.00
58	15.28	15.30	-3860.00
59	15.28	15.30	-3860.00
60	15.28	15.30	-3860.00
61	15.28	15.30	-3860.00
62	15.28	15.30	-3860.00
63	15.28	15.30	-3860.00
64	15.28	15.30	-3860.00
65	15.28	15.30	-3860.00
66	15.28	15.30	-3860.00
67	15.28	15.30	-3860.00
68	15.28	15.30	-3860.00
69	15.28	15.30	-3860.00
70	15.28	15.30	-3860.00
71	15.28	15.30	-3860.00
72	15.28	15.30	-3860.00
73	15.28	15.30	-3860.00
74	15.28	15.30	-3860.00
75	15.28	15.30	-3860.00
76	15.28	15.30	-3860.00
77	15.28	15.30	-3860.00
78	15.28	15.30	-3860.00
79	15.28	15.30	-3860.00
80	15.28	15.30	-3860.00
81	15.28	15.30	-3860.00
82	15.28	15.30	-3860.00
83	15.28	15.30	-3860.00
84	15.28	15.30	-3860.00
85	15.28	15.30	-3860.00
86	15.28	15.30	-3860.00
87	15.28	15.30	-3860.00
88	15.28	15.30	-3860.00
89	15.28	15.30	-3860.00
90	15.28	15.30	-3860.00
91	15.28	15.30	-3860.00
92	15.28	15.30	-3860.00
93	15.28	15.30	-3860.00
94	15.28	15.30	-3860.00
95	15.28	15.30	-3860.00
96	15.28	15.30	-3860.00
97	15.28	15.30	-3860.00
98	15.28	15.30	-3860.00
99	15.28	15.30	-3860.00
100	15.28	15.30	-3860.00

Carpenteria Sezione B-B
Scala 1:100



NUMERO SEZIONI	QUOTE PROGETTO	QUOTE TERRENO	DISTANZE PROGRESSIVE
1	15.28	15.30	-3860.00
2	15.28	15.30	-3860.00
3	15.28	15.30	-3860.00
4	15.28	15.30	-3860.00
5	15.28	15.30	-3860.00
6	15.28	15.30	-3860.00
7	15.28	15.30	-3860.00
8	15.28	15.30	-3860.00
9	15.28	15.30	-3860.00
10	15.28	15.30	-3860.00
11	15.28	15.30	-3860.00
12	15.28	15.30	-3860.00
13	15.28	15.30	-3860.00
14	15.28	15.30	-3860.00
15	15.28	15.30	-3860.00
16	15.28	15.30	-3860.00
17	15.28	15.30	-3860.00
18	15.28	15.30	-3860.00
19	15.28	15.30	-3860.00
20	15.28	15.30	-3860.00
21	15.28	15.30	-3860.00
22	15.28	15.30	-3860.00
23	15.28	15.30	-3860.00
24	15.28	15.30	-3860.00
25	15.28	15.30	-3860.00
26	15.28	15.30	-3860.00
27	15.28	15.30	-3860.00
28	15.28	15.30	-3860.00
29	15.28	15.30	-3860.00
30	15.28	15.30	-3860.00
31	15.28	15.30	-3860.00
32	15.28	15.30	-3860.00
33	15.28	15.30	-3860.00
34	15.28	15.30	-3860.00
35	15.28	15.30	-3860.00
36	15.28	15.30	-3860.00
37	15.28	15.30	-3860.00
38	15.28	15.30	-3860.00
39	15.28	15.30	-3860.00
40	15.28	15.30	-3860.00
41	15.28	15.30	-3860.00
42	15.28	15.30	-3860.00
43	15.28	15.30	-3860.00
44	15.28	15.30	-3860.00
45	15.28	15.30	-3860.00
46	15.28	15.30	-3860.00
47	15.28	15.30	-3860.00
48	15.28	15.30	-3860.00
49	15.28	15.30	-3860.00
50	15.28	15.30	-3860.00
51	15.28	15.30	-3860.00
52	15.28	15.30	-3860.00
53	15.28	15.30	-3860.00
54	15.28	15.30	-3860.00
55	15.28	15.30	-3860.00
56	15.28	15.30	-3860.00
57	15.28	15.30	-3860.00
58	15.28	15.30	-3860.00
59	15.28	15.30	-3860.00
60	15.28	15.30	-3860.00
61	15.28	15.30	-3860.00
62	15.28	15.30	-3860.00
63	15.28	15.30	-3860.00
64	15.28	15.30	-3860.00
65	15.28	15.30	-3860.00
66	15.28	15.30	-3860.00
67	15.28	15.30	-3860.00
68	15.28	15.30	-3860.00
69	15.28	15.30	-3860.00
70	15.28	15.30	-3860.00
71	15.28	15.30	-3860.00
72	15.28	15.30	-3860.00
73	15.28	15.30	-3860.00
74	15.28	15.30	-3860.00
75	15.28	15.30	-3860.00
76	15.28	15.30	-3860.00
77	15.28	15.30	-3860.00
78	15.28	15.30	-3860.00
79	15.28	15.30	-3860.00
80	15.28	15.30	-3860.00
81	15.28	15.30	-3860.00
82	15.28	15.30	-3860.00
83	15.28	15.30	-3860.00
84	15.28	15.30	-3860.00
85	15.28	15.30	-3860.00
86	15.28	15.30	-3860.00
87	15.28	15.30	-3860.00
88	15.28	15.30	-3860.00
89	15.28	15.30	-3860.00
90	15.28	15.30	-3860.00
91	15.28	15.30	-3860.00
92	15.28	15.30	-3860.00
93	15.28	15.30	-3860.00
94	15.28	15.30	-3860.00
95	15.28	15.30	-3860.00
96	15.28	15.30	-3860.00
97	15.28	15.30	-3860.00
98	15.28	15.30	-3860.00
99	15.28	15.30	-3860.00
100	15.28	15.30	-3860.00

Ministero delle Infrastrutture e dei Trasporti
Struttura di Vigilanza sulle Concessionarie Autostradali

AMMODERNAMENTO A N° 4 CORSIE DELLA S.S. 514 "DI CHIARAMONTE" E DELLA S.S. 194 RAGUSANA DALLLO SVINCOLO CON LA S.S. 115 ALLO SVINCOLO CON LA S.S. 114. (C.U.P. F120C3000000001)

PROGETTO DEFINITIVO

LOTTO 8
OPERE D'ARTE MAGGIORI
Manufatto di attraversamento ferroviario al km 3+678
Disegno d'insieme
Stralcio planimetrico, piante e profili

Il Progettista SILECspa
Supporto specialistico CFarm
Geologo Dott. Geologo Fabio Melchiorri
Geotecnica e opere d'arte minori Ing. Antonio Alparone
Opere d'arte principali: Ing. G. Mondello
Opere di mitigazione dell'impatto ambientale: Rumore, vibrazioni ed atmosfera

GENNAIO '17
1:2000/100

IL RESPONSABILE DEL PROCEDIMENTO SARC SRL
L'ENTITA' COSTRUTTRICE