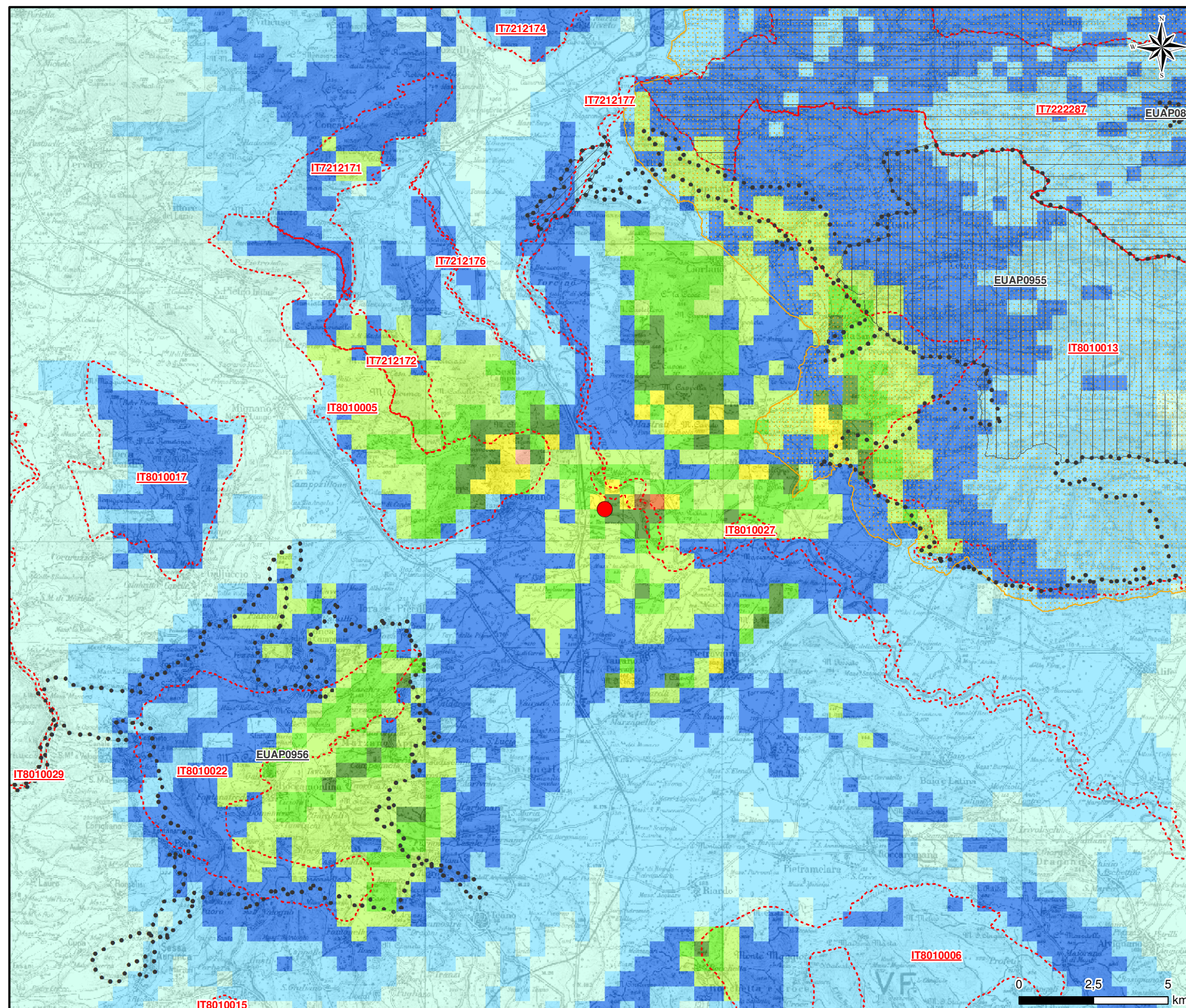
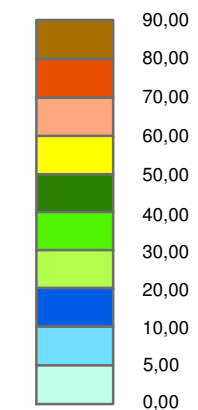
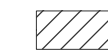





Figura 4.7.1c ScENARIO autorizzato: concentrazione massima oraria di CO

LEGENDA
 CTE Presenzano

Concentrazioni [µg/m³]
 Valore massimo: 89,57 µg/m³

Aree Rete Natura 2000
 ZPS IT8010030 "Le Mortine"
 ZPS IT8010026 "Matese"

 SIC:

- IT8010013 "Matese Casertano"
- IT8010027 "F. Volturno e Calore Beneventano"
- IT7212174 "Cesa Martino"
- IT7212177 "Sorgente sulfurea di Triverno"
- IT8010006 "Catena di Monte Maggiore"
- IT7212176 "Rio S. Bartolomeo"
- IT7212171 "Monte Corno – Monte Sammucro"
- IT7212172 "Monte Cesima"
- IT8010005 "Catena di Monte Cesima"
- IT8010017 "Monti di Mignano Montelungo"
- IT8010022 "Vulcano di Roccamonfina"
- IT8010015 "Monte Massico"
- IT8010029 "Fiume Garigliano"

 SIC/ZPS IT7222287 "La Gallinola - Monte Miletto - Monti del Matese"

Parchi Naturali Regionali
 EUAP:

- EUAP0955 "Parco regionale del Matese"
- EUAP0956 "Parco regionale di Roccamonfina - Foce Garigliano"
- EUAP0848 "Riserva naturale Torrente Callora"

Important Bird Areas
 IBA124 "Matese"