




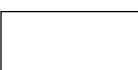


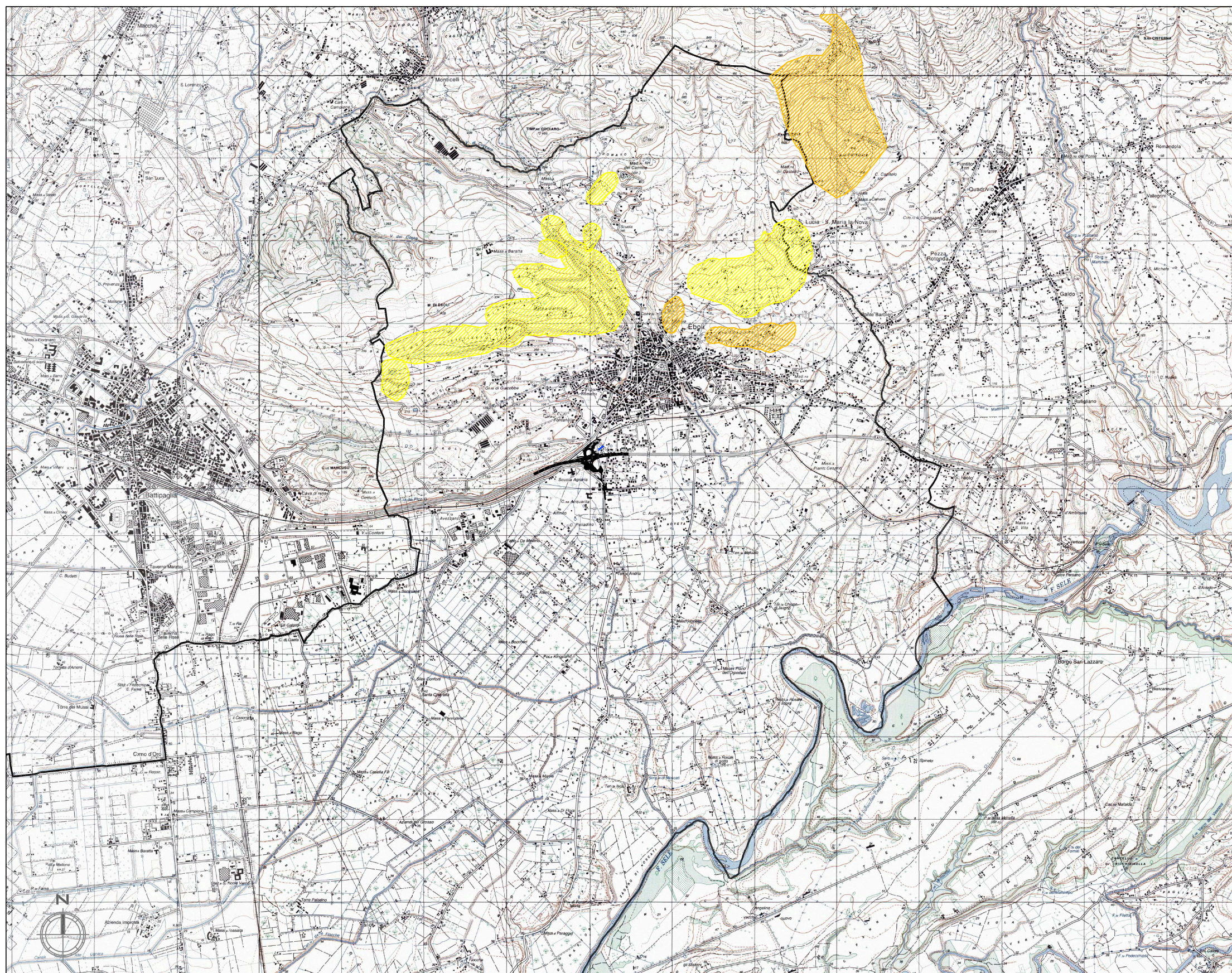
Anas SpA

Direzione Centrale Progettazione

A2 - AUTOSTRADA MEDITERRANEA
ADEGUAMENTO SVINCOLO DI EBOLI AL KM 30+000
PROGETTO PRELIMINARE
STUDIO PRELIMINARE AMBIENTALE

LEGENDA

-  Rischio R4, Molto Elevato
-  Rischio R3, Elevato
-  Rischio R2, Medio
-  Rischio R1, Moderato



QUADRO DI RIFERIMENTO PROGRAMMATICO
STRALCIO DEL PIANO DI ASSETTO IDROGEOLOGICO (PAI) - RISCHIO GEOMORFOLOGICA

cod. elaborato :
T00IA11AMBCT12_A
file :
T00IA11AMBCT12_A.dwg

tavola: **1/1**
scala : **1:50.000**