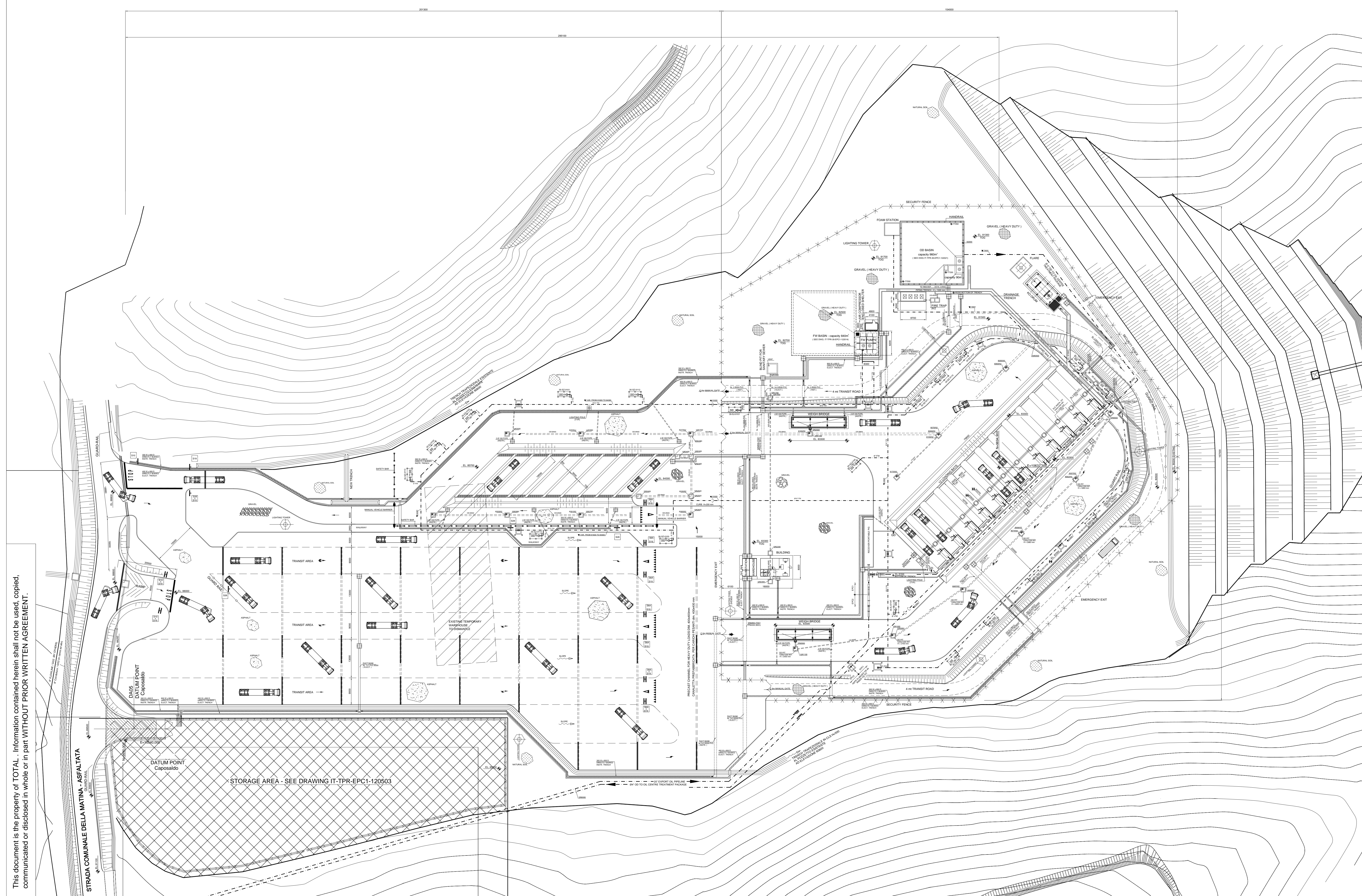
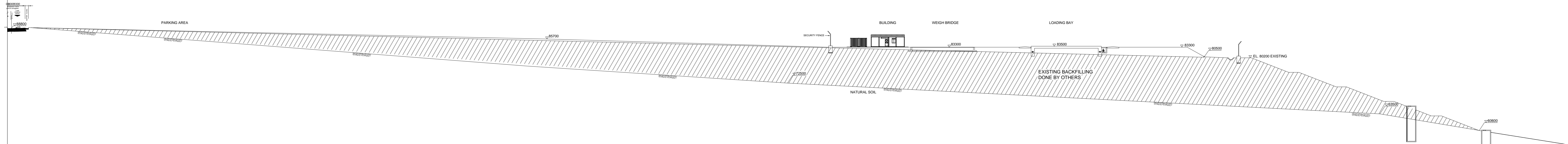


SECTION



**GENERAL NOTES note generali**

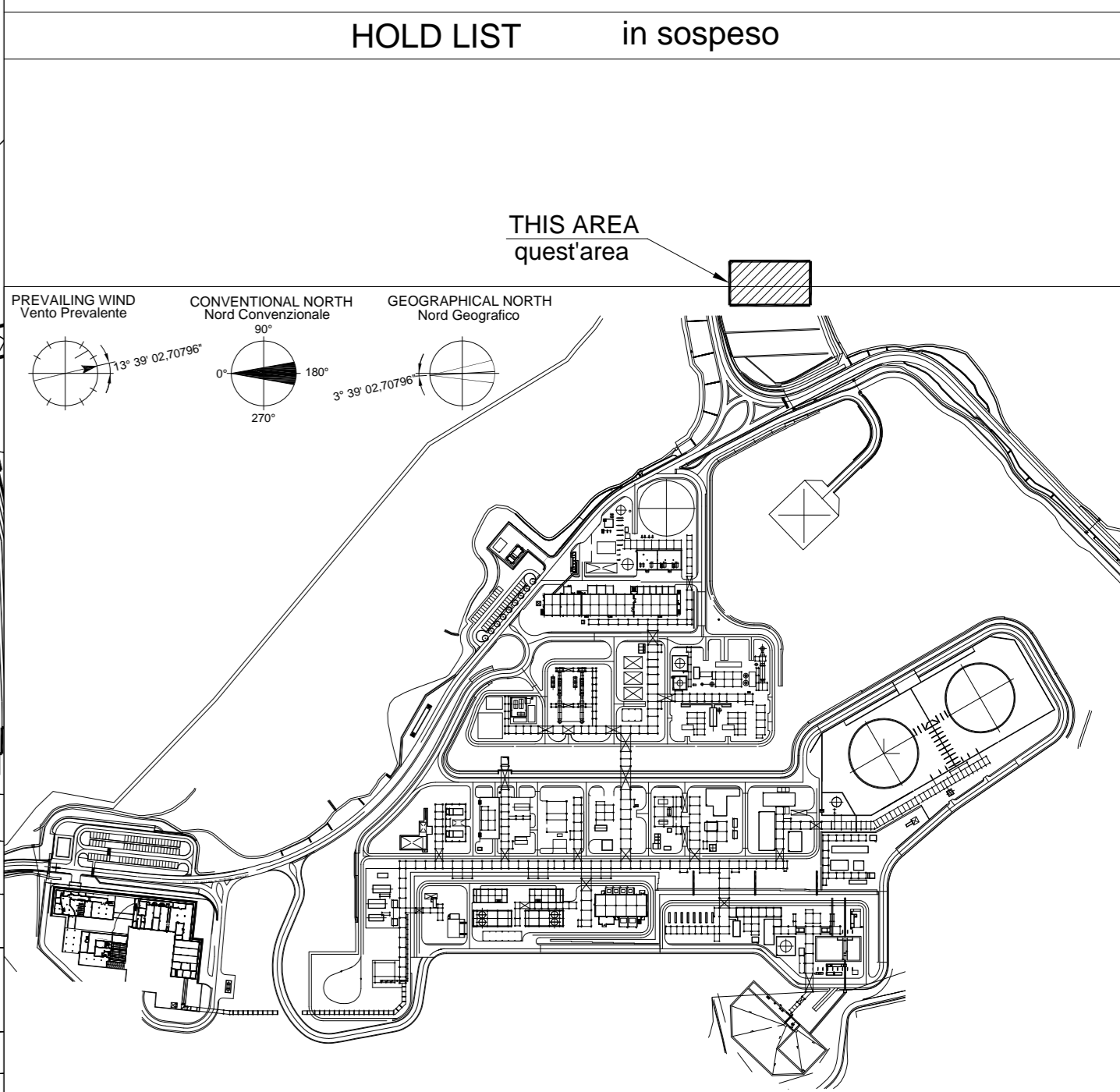
- ALL CO-ORDINATES ARE IN METERS. tutte le coordinate sono in metri.
- ALL DIMENSIONS AND ELEVATIONS ARE IN MILLIMETERS. tutte le dimensioni e le elevazioni sono in millimetri.
- ELEVATION 100.000 IS REFERRED TO HIGHEST POINT OF PAVING (H.P.P.) AND CORRESPONDING TO HPP=1039.3 m ABOVE SEA LEVEL. l'elevazione 100.000 e' riferita al punto alto della pavimentazione (H.P.P.) e corrisponde a HPP=1039.3 m sopra il livello medio mare.
- OIL CENTRE DATUM POINT : N=10.000.000 E=10.000.000 CORRESPONDS TO COORDINATES X (EAST) =1.730.673 Y (NORTH)= 2.677.413 REFERRED TO THE OIL CENTRE PLANT GRID DEFINED IN COMPANY SPECIFICATION IT-TPR-OC-SFT-000017 AND USED IN RPA DRAWING IT-TPR-SP-RPA-722008 rev.05. datum point del centro olii: N=10.000.000 E=10.000.000 Corrisponde alle coordinate X (EST)=1.730.673 Y (NORD)=2.677.413 Riferito alla griglia della pianta nella specifica TOTAL: IT-TPR-OC-SFT-000017 e usata nei disegni RPA: IT-TPR-SP-RPA-722008 rev.05
- SOIL RESISTANCE DATA AVAILABLE ONLY FOR CHEMICAL STORAGE PORTION (REF. TO GEOTECHNICAL REPORT DOC. Nr. IT-TPR-34-EPC1-123001) NEW SOIL INVESTIGATION SHALL BE PERFORMED CONSIDERING THAT LOADING BAYS ARE VERY FAR AND THAT THE SOIL STRATIGRAPHY IS DIFFERENT (HIGHER EMBANKMENT) I dati di resistenza del terreno sono disponibili solo per la parte di stoccaggio dei prodotti chimici (rif. relazione geotecnica doc. n. IT-TPR-34-EPC1-123001) la nuova indagine del suolo deve essere eseguita considerando che e' bale di carico molto lontane e la stratigrafia del terreno e' differente (terrapieno piu' alto)

**LEGEND legenda**

- GD - GAS DETECTOR OPEN PATH rilevatore gas
- GRAVEL ghiaia
- GRAVEL HEAVY DUTY ghiaia stabilizzata per passaggio mezzi pesanti
- ASPHALT asfalto
- NAYURAL SOIL terreno naturale

**REFERENCE DRAWINGS disegni di riferimento**

- TR01-AA-DC-T00000000101/ GEN - GENERAL NOTES FOR RC STRUCTURE. IT-TPR-00-EPC1-120100 gen - note generali per le strutture in calcestruzzo armato.
- TR01-AI-DU-T00000000101/ GEN - GENERAL NOTES FOR STEEL STRUCTURE. IT-TPR-00-EPC1-124100 gen - note generali per strutture di acciaio.
- TR01-AX-DA-T00U00000201/ GEN-UNDERGROUND SERVICES TYPICAL ROAD SECTION DETAIL IT TPR 00 EPC1 120204 gen-servizi interrati dettagli sezione stradale tipica
- TR01-AX-DA-T00U00000105/ GEN-UNDERGROUND SERVICES TYPICAL SIGNALS AN ROAD DETAILS IT TPR 00 EPC1 120949 gen-servizi interrati dettagli tipici segnaletica stradale
- TR01-AX-DA-T00U00000106/ GEN-LIG SERVICES TYPICAL INSTALLATION DETAILS FOR ROADS AND YARDS IT TPR 00 EPC1 120950 gen-servizi interrati dettagli tipici di installazione in strade e piazzali
- TR01-AQ-DC-T30000000501/ GEN-UNDERGROUND SERVICES - FENCING DETAILS IT TPR 35 EPC1 120603 gen-servizi interrati dettagli recinzioni
- TR01-XX-DG-T35130902/ DA05 EXPORTING OIL LOADING AREA - OVERALL PLOT PLAN IT-TPR-35-EPC1-130902 - DA05 baie di caricamento spedizione olio - planimetria generale
- TR01-AX-DA-T35U00000601/ DA05 EXPORTING OIL LOADING AREA - UNDERGROUND BASIC LAYOUT IT-TPR-35-EPC1-120601 - DA05 baie di caricamento spedizione olio - disposizione generale dagli interrati
- TR01-AQ-DC-T35U00000602/ DA05 EXPORTING OIL LOADING AREA - EXTERNAL FENCES DETAILS IT-TPR-35-EPC1-120602 - DA05 baie di caricamento spedizione olio - dettagli recinzione esterna
- TR01-AQ-DC-T35U00000601/ DA05 EXPORTING OIL LOADING AREA - UNDERGROUND LAYOUT ZONE A-1 IT-TPR-35-EPC1-120601 - DA05 baie di caricamento spedizione olio - planimetria Zona A-1
- TR01-AQ-DC-T35U00000602/ DA05 EXPORTING OIL LOADING AREA - UNDERGROUND LAYOUT ZONE A-2 IT-TPR-35-EPC1-120602 - DA05 baie di caricamento spedizione olio - planimetria Zona A-2



**APPROVED FOR CONSTRUCTION APPROVATO PER COSTRUZIONE**

Date: 05-May-2017 / Data: 05/05/2017  
 Signature: / Firma: S. Izzo

**IL DIRETTORE DEI LAVORI**  
 Dott. Ing. Pierfrancesco MANCINI

Rev	Date	Status	Revision Memo	Issued by	Checked by	Approved by
01	05-MAY-2017	AFC	ISSUED FOR CONSTRUCTION	MCAPPELLETTI	M. PISANI	F. DE BLASIO
00	17-JAN-2017	IPC	FIRST ISSUE	MCAPPELLETTI	M. PISANI	F. DE BLASIO

**TOTAL** **TEMPO ROSSA** **ATI Tecnimont**

This Document is the property of TOTAL and shall not be disclosed to third parties or reproduced without permission of the owner. This document has been generated by an Electronic Document Management System. When printed it is considered as a for information only copy. The controlled copy is the screen version and it is the holder's responsibility that he/she holds the latest valid version.

**DA05 - EXPORT OIL LOADING AREA UNDERGROUND - BASIC LAYOUT**  
**Planimetria Interrati**

Doc type: DRW | Syst.: S-Syst.: 00 | Discipline: CIV | Electronic Filename: IT-TPR-35-EPC1-120601\_rev01.dwg  
 COMPANY Document N°: **IT - TPR - 35 - EPC1 - 120601** | REV: **01** | Scale: **1/500** | Class: **2**  
 CONTRACTOR Document N°: **TR01-AQ-DK-T35U00000601** | Format: A0 | Folio: **1** of **1**

This document is the property of TOTAL. Information contained herein shall not be used, copied, communicated or disclosed in whole or in part WITHOUT PRIOR WRITTEN AGREEMENT.