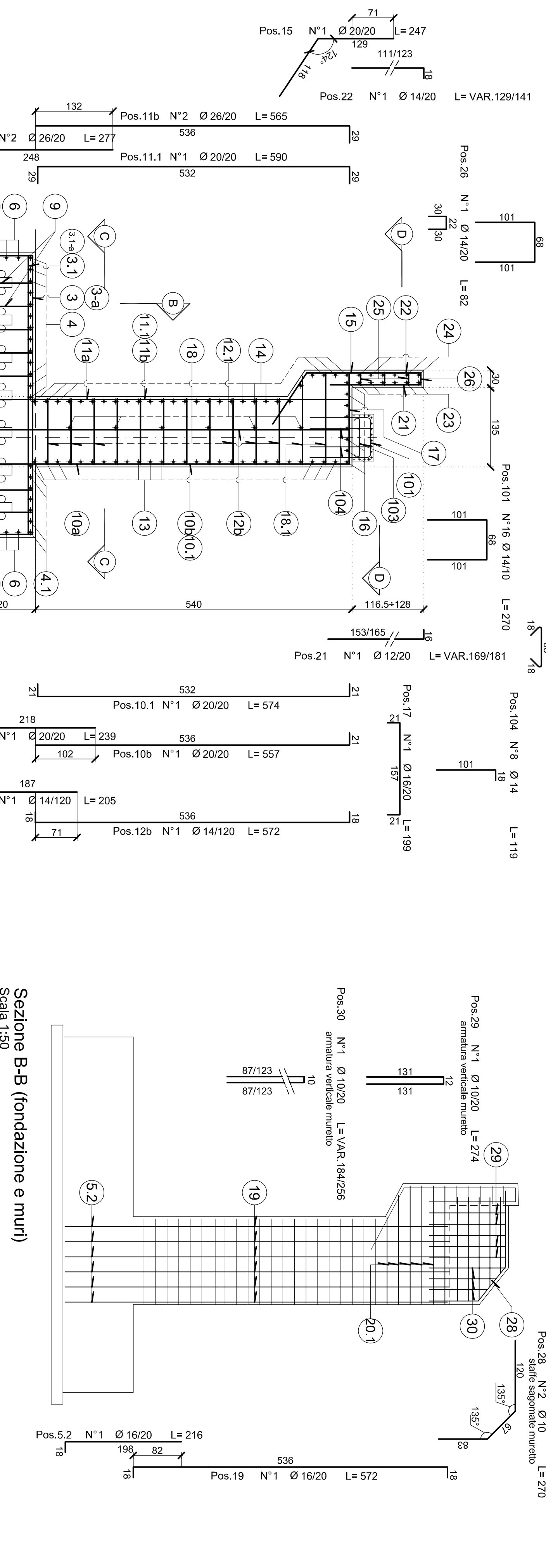


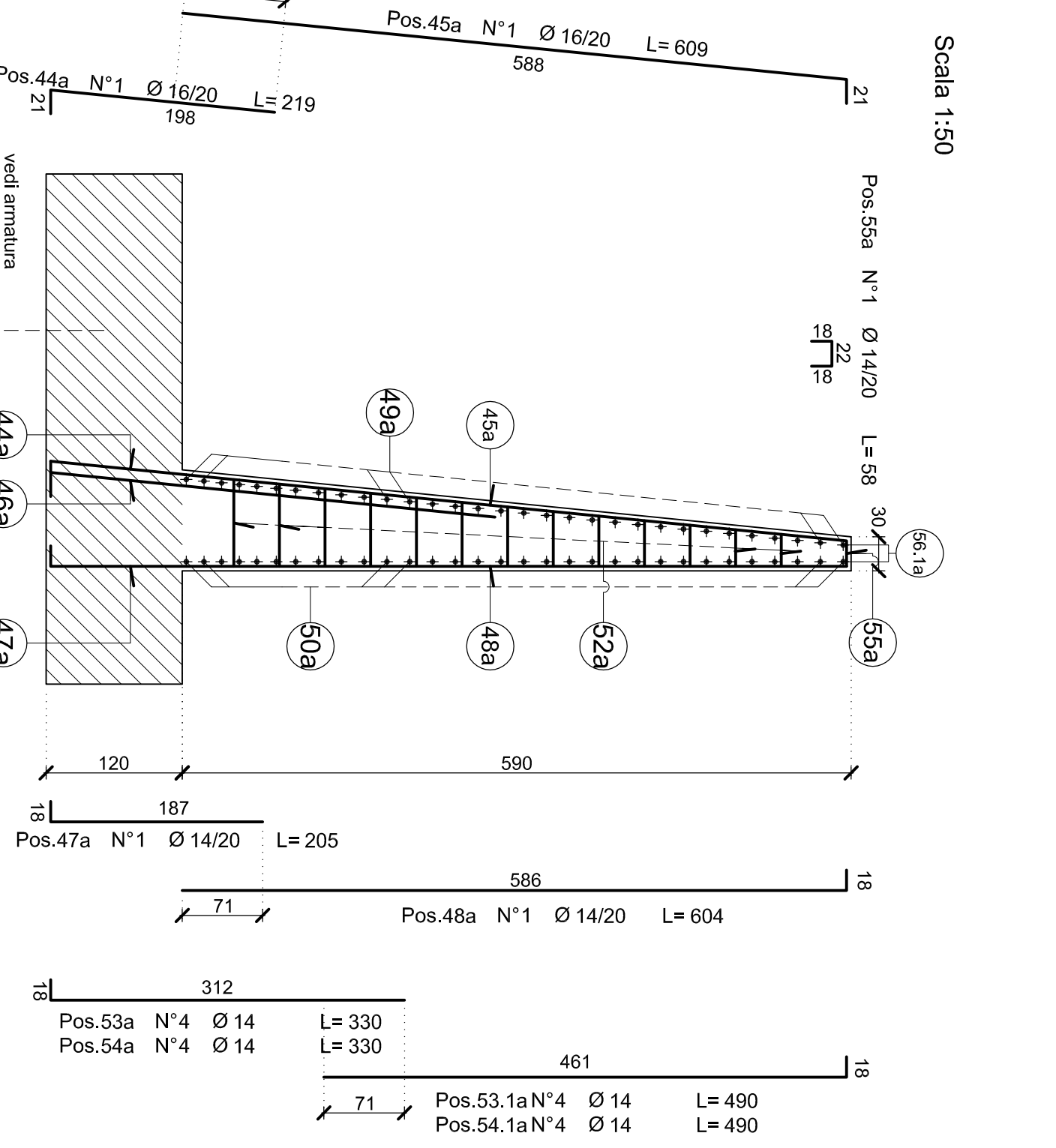
TABELLA MATERIALI SOTTOVIA ESISTENTI

CALCESTRUZZI	di Armatura	di Cemento	di Masso	di Manufatti
CLT1/15	S4	M41	M2	M2
CLT2/15	S4	M41	M2	M2
CLT3/17	S4	M41	M2	M2
CLT4/16	S4	M41	M2	M2
CLT5/16	S4	M41	M2	M2
CLT6/16	S4	M41	M2	M2
CLT7/16	S4	M41	M2	M2
CLT8/16	S4	M41	M2	M2
CLT9/16	S4	M41	M2	M2
CLT10/16	S4	M41	M2	M2
CLT11/16	S4	M41	M2	M2
CLT12/16	S4	M41	M2	M2
CLT13/16	S4	M41	M2	M2
CLT14/16	S4	M41	M2	M2
CLT15/16	S4	M41	M2	M2
CLT16/16	S4	M41	M2	M2
CLT17/16	S4	M41	M2	M2
CLT18/16	S4	M41	M2	M2
CLT19/16	S4	M41	M2	M2
CLT20/16	S4	M41	M2	M2
CLT21/16	S4	M41	M2	M2
CLT22/16	S4	M41	M2	M2
CLT23/16	S4	M41	M2	M2
CLT24/16	S4	M41	M2	M2
CLT25/16	S4	M41	M2	M2
CLT26/16	S4	M41	M2	M2
CLT27/16	S4	M41	M2	M2
CLT28/16	S4	M41	M2	M2
CLT29/16	S4	M41	M2	M2
CLT30/16	S4	M41	M2	M2
CLT31/16	S4	M41	M2	M2
CLT32/16	S4	M41	M2	M2
CLT33/16	S4	M41	M2	M2
CLT34/16	S4	M41	M2	M2
CLT35/16	S4	M41	M2	M2
CLT36/16	S4	M41	M2	M2
CLT37/16	S4	M41	M2	M2
CLT38/16	S4	M41	M2	M2
CLT39/16	S4	M41	M2	M2
CLT40/16	S4	M41	M2	M2
CLT41/16	S4	M41	M2	M2
CLT42/16	S4	M41	M2	M2
CLT43/16	S4	M41	M2	M2
CLT44/16	S4	M41	M2	M2
CLT45/16	S4	M41	M2	M2
CLT46/16	S4	M41	M2	M2
CLT47/16	S4	M41	M2	M2
CLT48/16	S4	M41	M2	M2
CLT49/16	S4	M41	M2	M2
CLT50/16	S4	M41	M2	M2
CLT51/16	S4	M41	M2	M2
CLT52/16	S4	M41	M2	M2
CLT53/16	S4	M41	M2	M2
CLT54/16	S4	M41	M2	M2
CLT55/16	S4	M41	M2	M2
CLT56/16	S4	M41	M2	M2
CLT57/16	S4	M41	M2	M2
CLT58/16	S4	M41	M2	M2
CLT59/16	S4	M41	M2	M2
CLT60/16	S4	M41	M2	M2
CLT61/16	S4	M41	M2	M2
CLT62/16	S4	M41	M2	M2
CLT63/16	S4	M41	M2	M2
CLT64/16	S4	M41	M2	M2
CLT65/16	S4	M41	M2	M2
CLT66/16	S4	M41	M2	M2
CLT67/16	S4	M41	M2	M2
CLT68/16	S4	M41	M2	M2
CLT69/16	S4	M41	M2	M2
CLT70/16	S4	M41	M2	M2
CLT71/16	S4	M41	M2	M2
CLT72/16	S4	M41	M2	M2
CLT73/16	S4	M41	M2	M2
CLT74/16	S4	M41	M2	M2
CLT75/16	S4	M41	M2	M2
CLT76/16	S4	M41	M2	M2
CLT77/16	S4	M41	M2	M2
CLT78/16	S4	M41	M2	M2
CLT79/16	S4	M41	M2	M2
CLT80/16	S4	M41	M2	M2
CLT81/16	S4	M41	M2	M2
CLT82/16	S4	M41	M2	M2
CLT83/16	S4	M41	M2	M2
CLT84/16	S4	M41	M2	M2
CLT85/16	S4	M41	M2	M2
CLT86/16	S4	M41	M2	M2
CLT87/16	S4	M41	M2	M2
CLT88/16	S4	M41	M2	M2
CLT89/16	S4	M41	M2	M2
CLT90/16	S4	M41	M2	M2
CLT91/16	S4	M41	M2	M2
CLT92/16	S4	M41	M2	M2
CLT93/16	S4	M41	M2	M2
CLT94/16	S4	M41	M2	M2
CLT95/16	S4	M41	M2	M2
CLT96/16	S4	M41	M2	M2
CLT97/16	S4	M41	M2	M2
CLT98/16	S4	M41	M2	M2
CLT99/16	S4	M41	M2	M2
CLT100/16	S4	M41	M2	M2

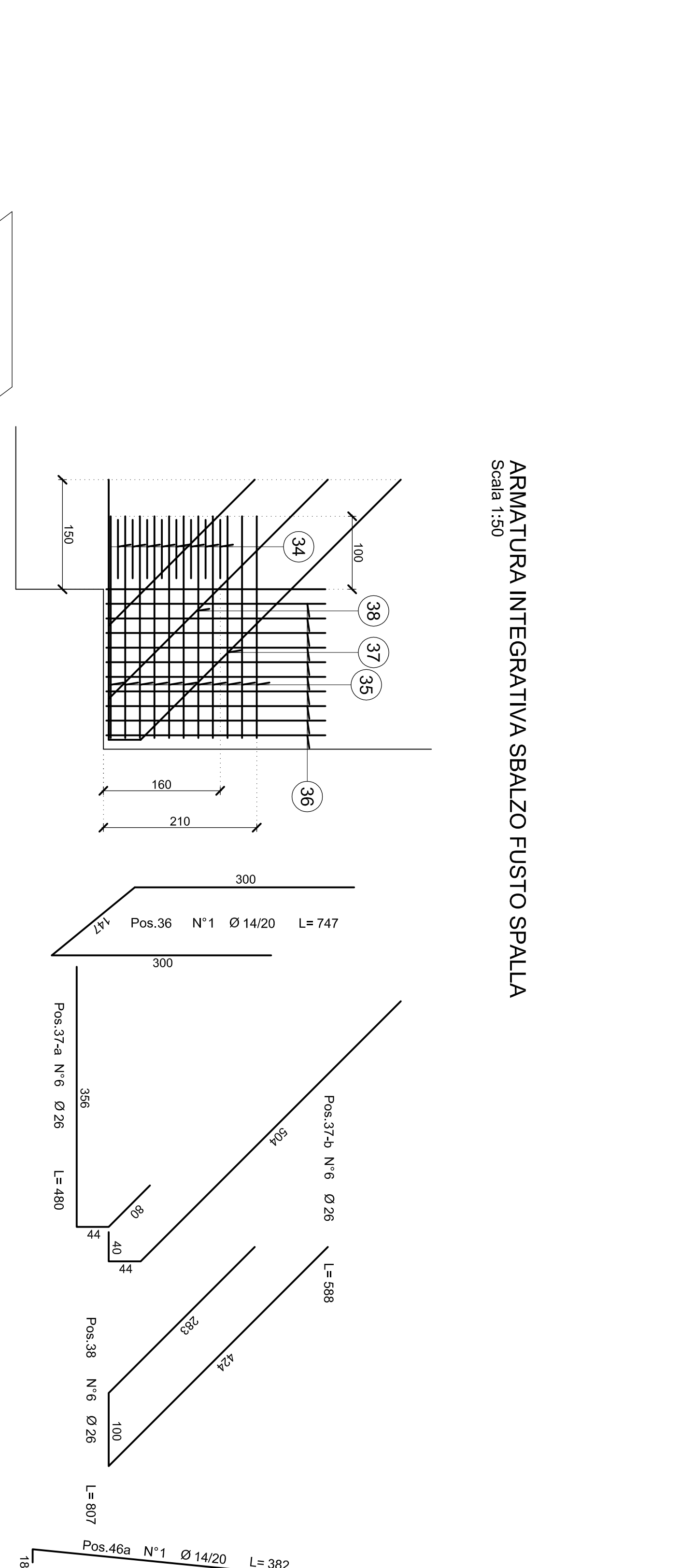
Visa E-E
Scala 1:50



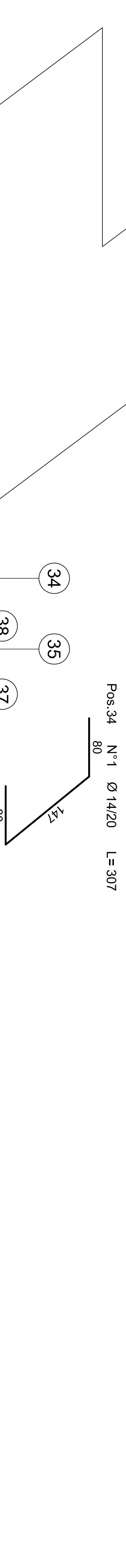
Sezione A-A (fondazione e fusto)
Scala 1:50



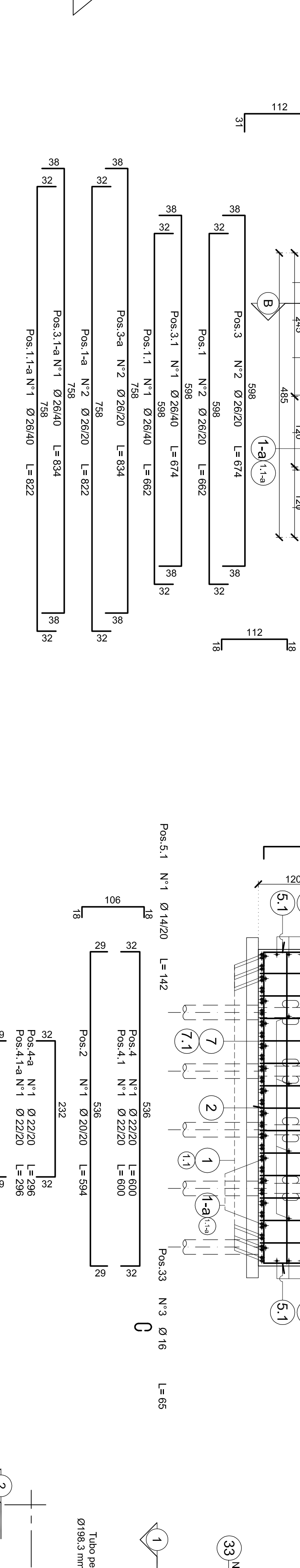
ARMATURA MURO DALA 1 - pianta
Scala 1:50



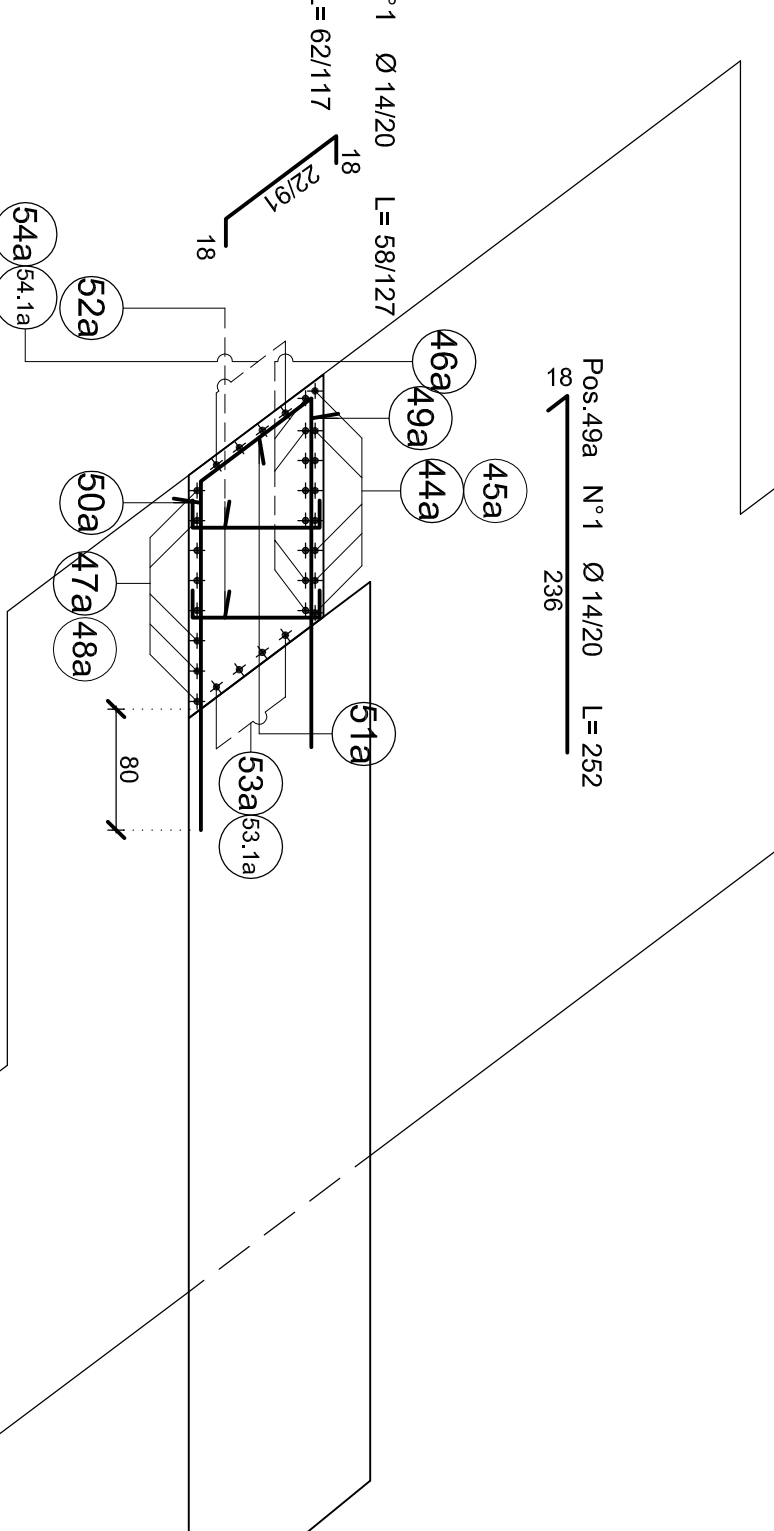
ARMATURA INTEGRATIVA SBALZO FUSTO SPALLA
Scala 1:50



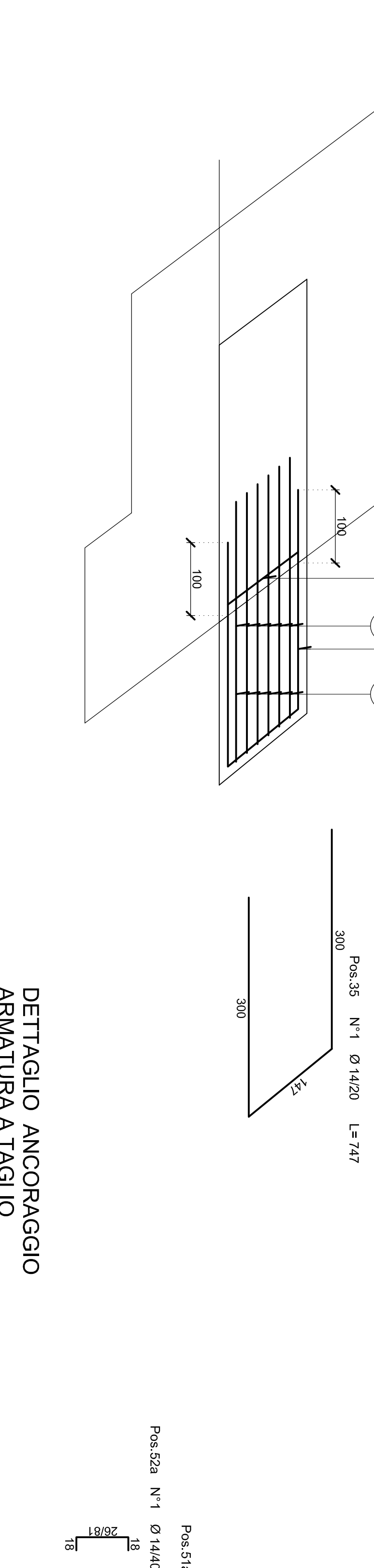
DETTAGLIO ANCORAGGIO
ARMATURA A TAGLIO
Scala 1:5



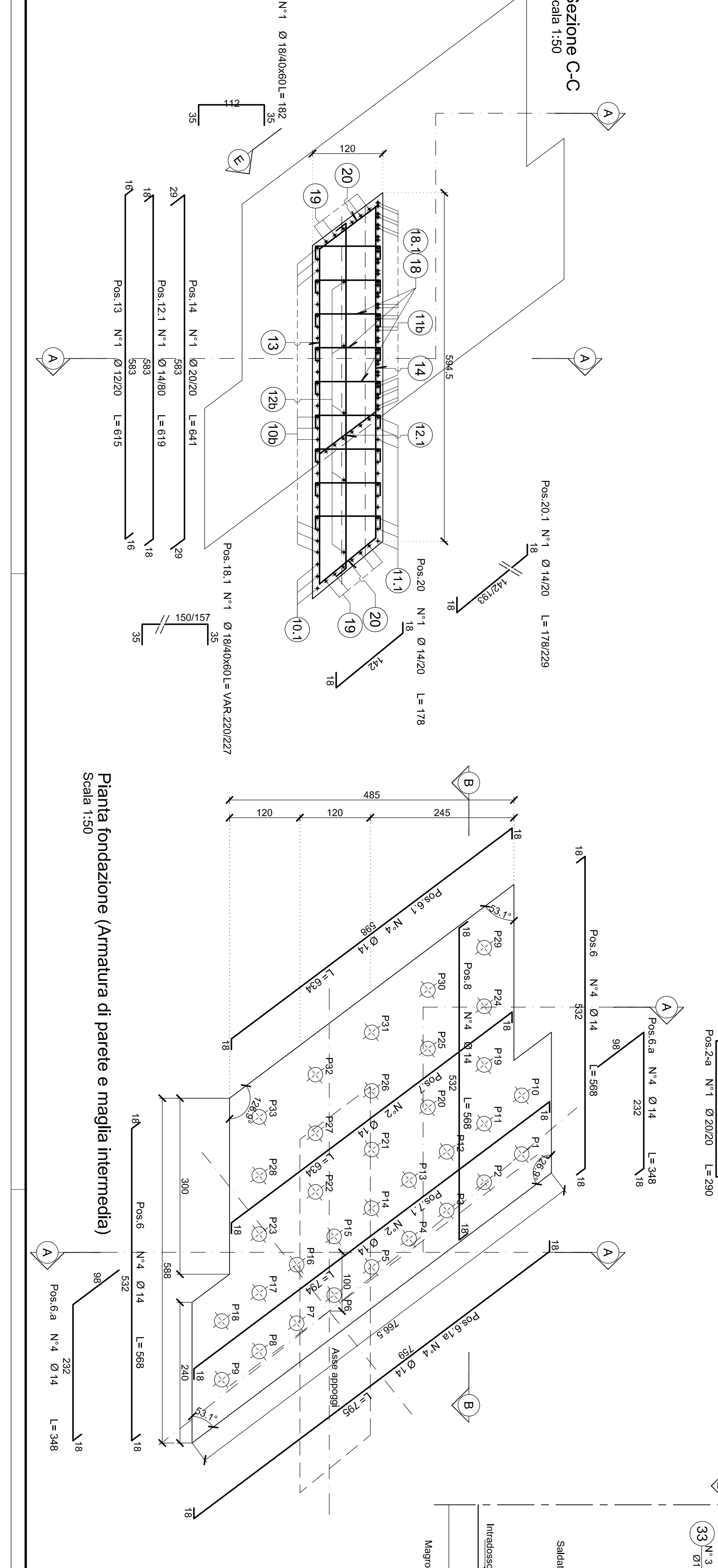
Sezione B-B (fondazione e muni)
Scala 1:50



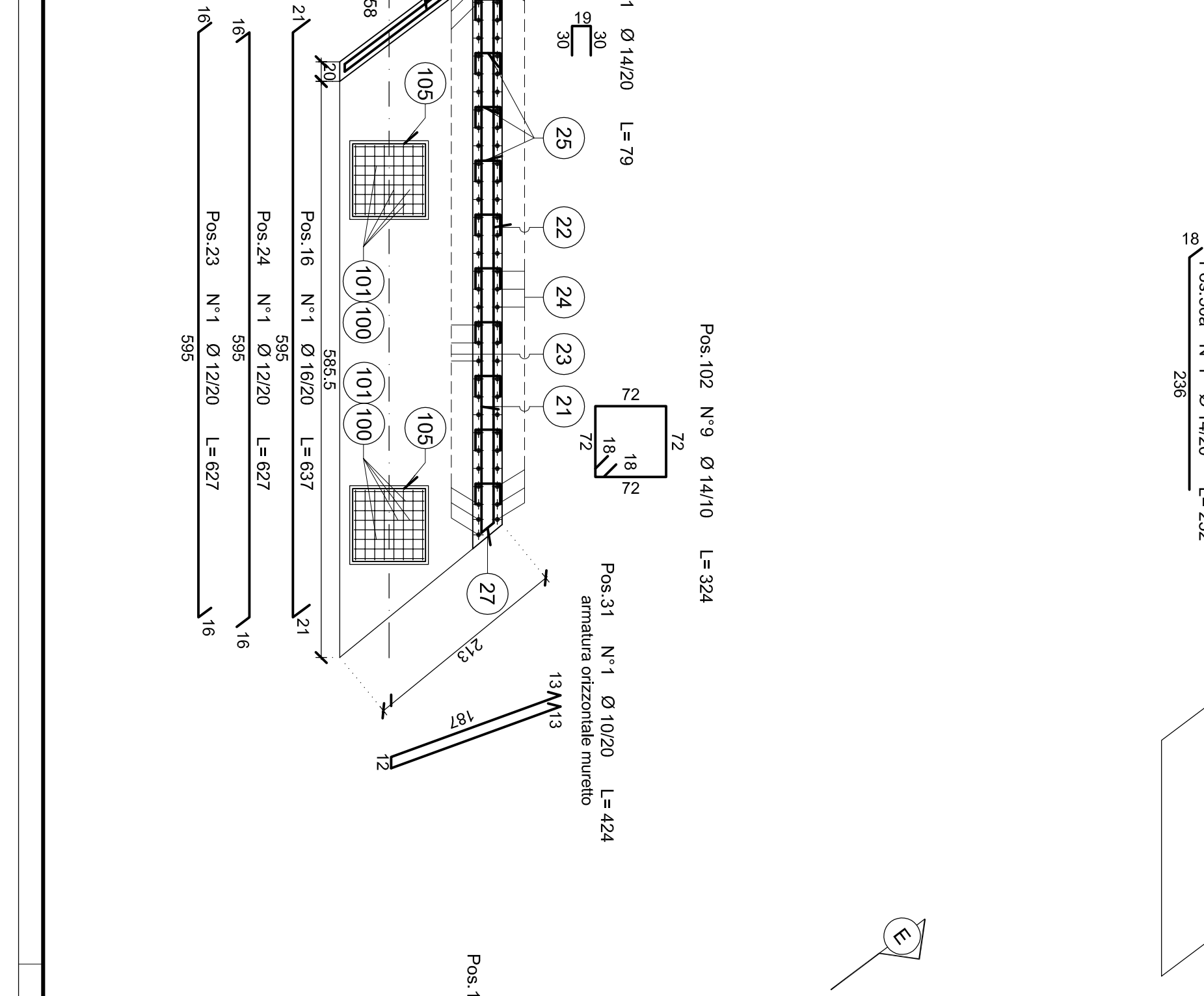
Sezione C-C
Scala 1:50



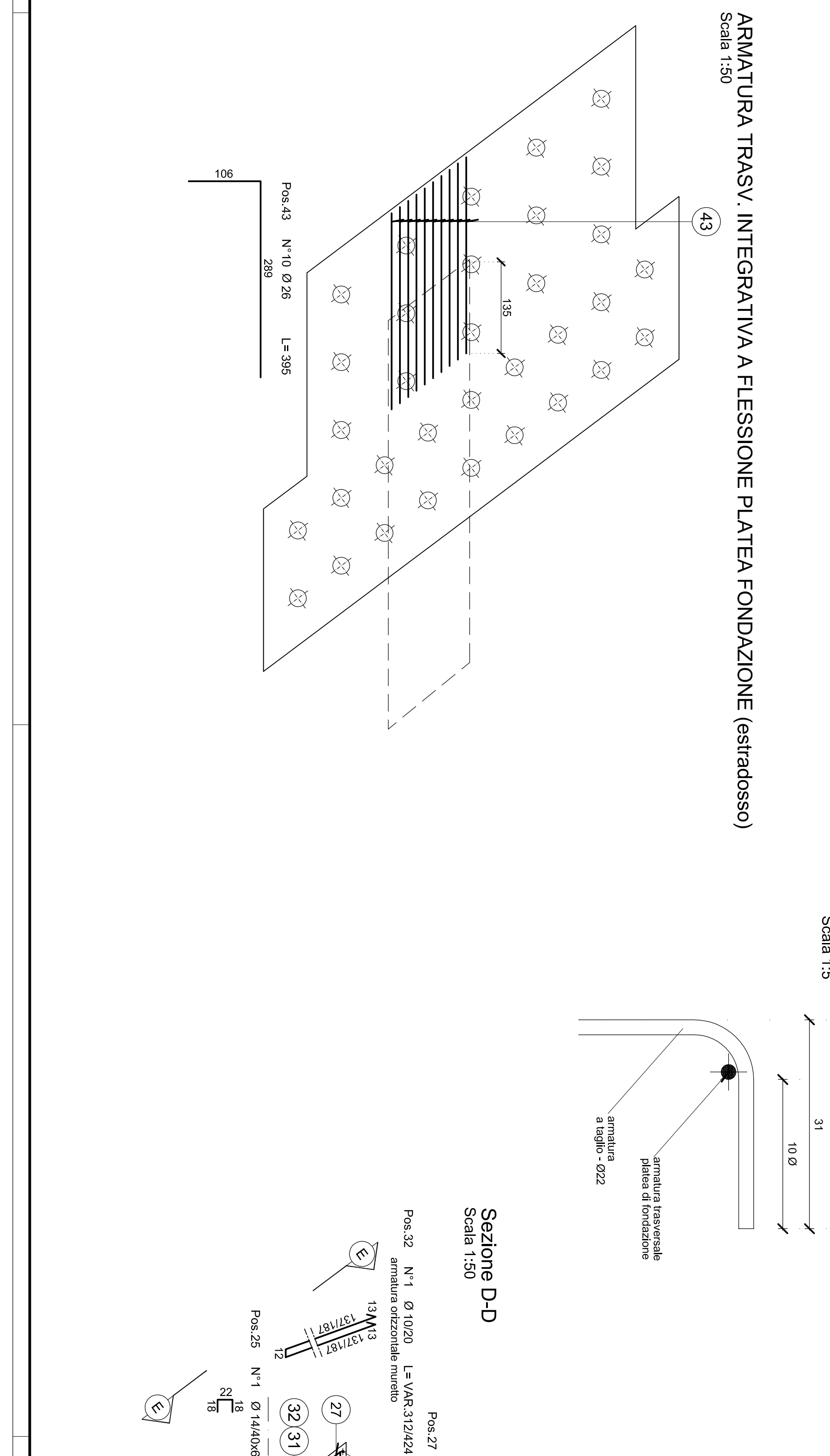
Sezione D-D
Scala 1:50



Pianta fondazione (Armatura di parete e maglia intermedia)
Scala 1:50



ARMATURA TRASY INTEGRATIVA A FLESSIONE PLATEA FONDAZIONE (estradosso)
Scala 1:50



ARMATURA INTEGRATIVA SBALZO FUSTO SPALLA
Scala 1:50

ANAS S.p.A.

MODIFICA TECNICA N. 130

OPERE D'ARTE - INTERVENTI SU SOTTOVIA ESISTENTI SOTTOVIA ESISTENTE AL KM 5+268,91+ SINVOLCO OMINNA

Armatura spalla 1

Codice Unico Progetto (CUP): F41B03000230001

Codice elaboratore: PA17108 PE

SE1 NO04 50

ANAS S.p.A. - Via Salaria, 1000 - 00198 Roma

ACCS ingegneri

ACCS S.p.A.

PROTOCOLLO: 11011

DATA: 11/01

PROGETTO: 11011

VERO RESPONSABILE DEL PROGETTO: Prof. Ing. Ettore di Stefano de' Gennaro