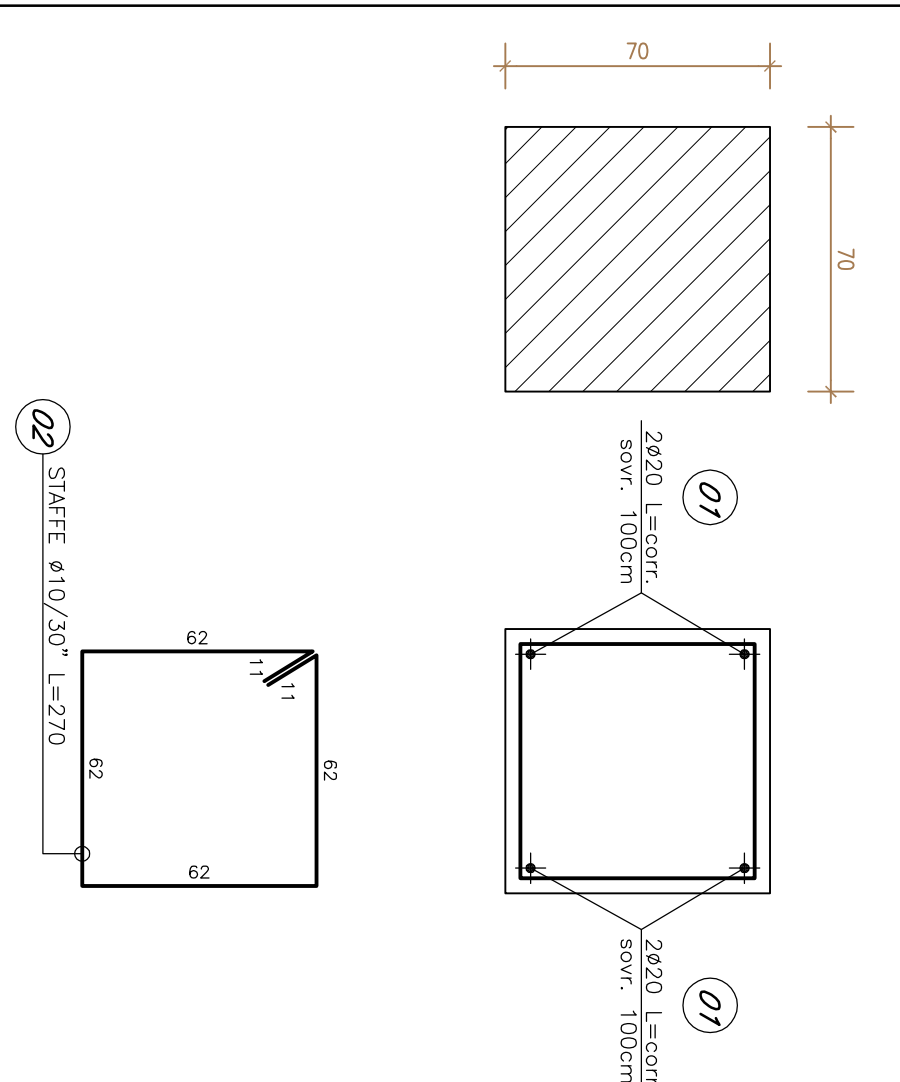
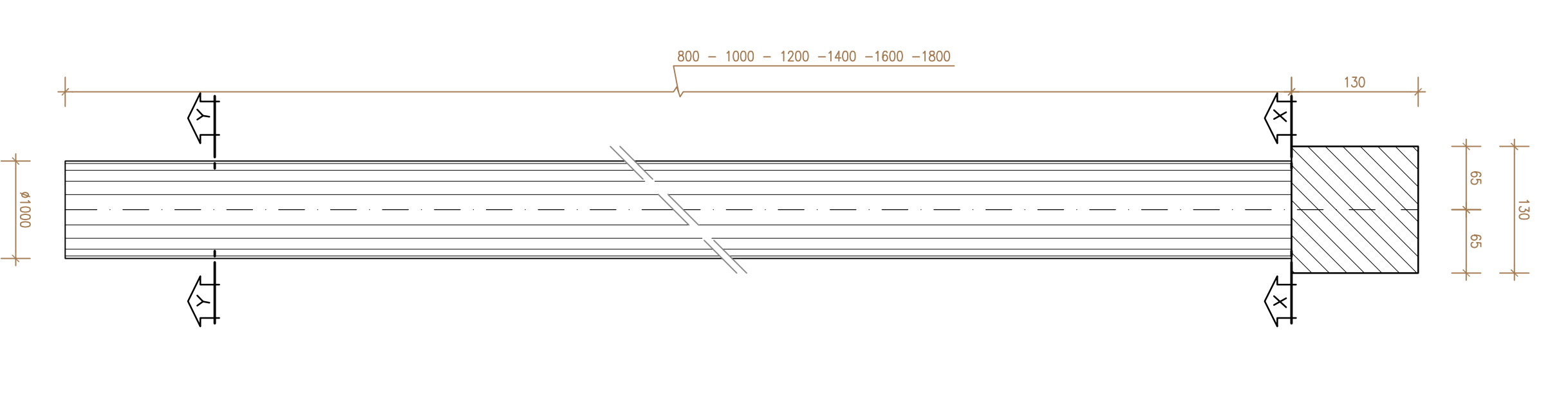


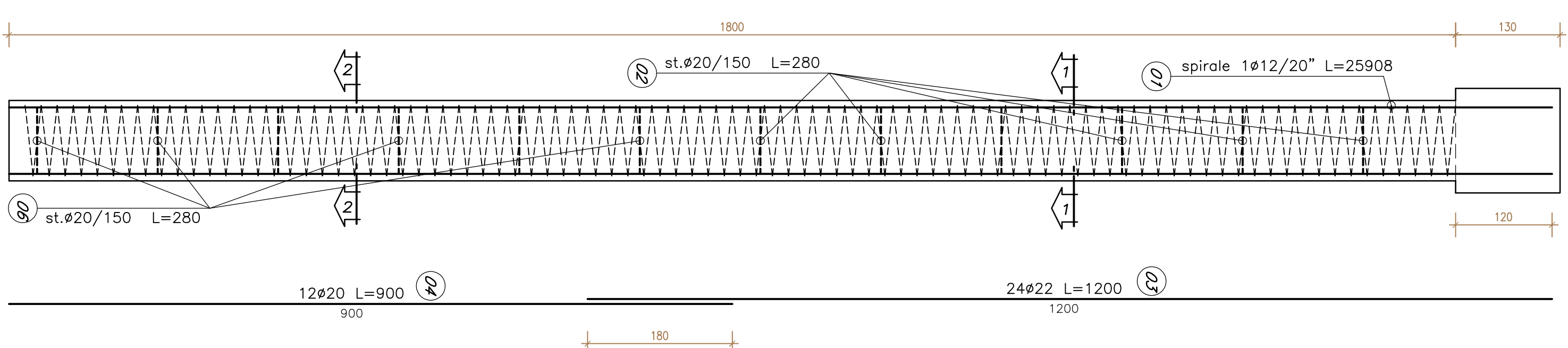
CORDOLO DI BASE scala 1:20
CARPENTERIA ARMATURA



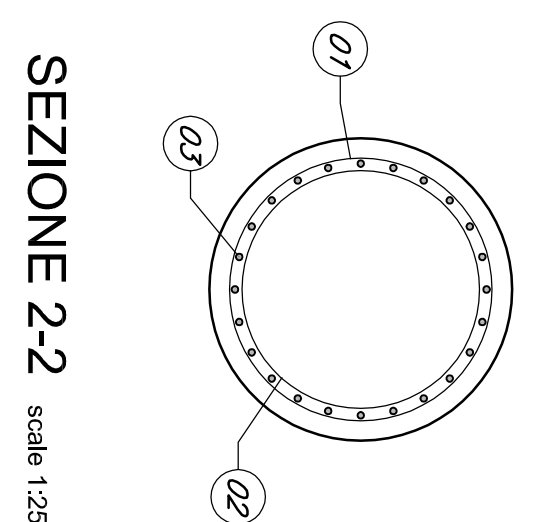
PALO L=8,0/18,0m scala 1:10
CARPENTERIA



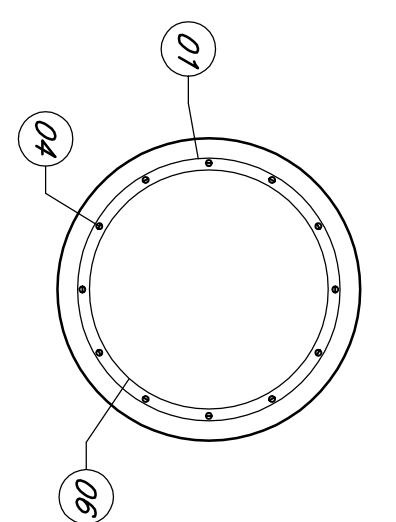
PALO L=18,0m scala 1:50
ARMATURA



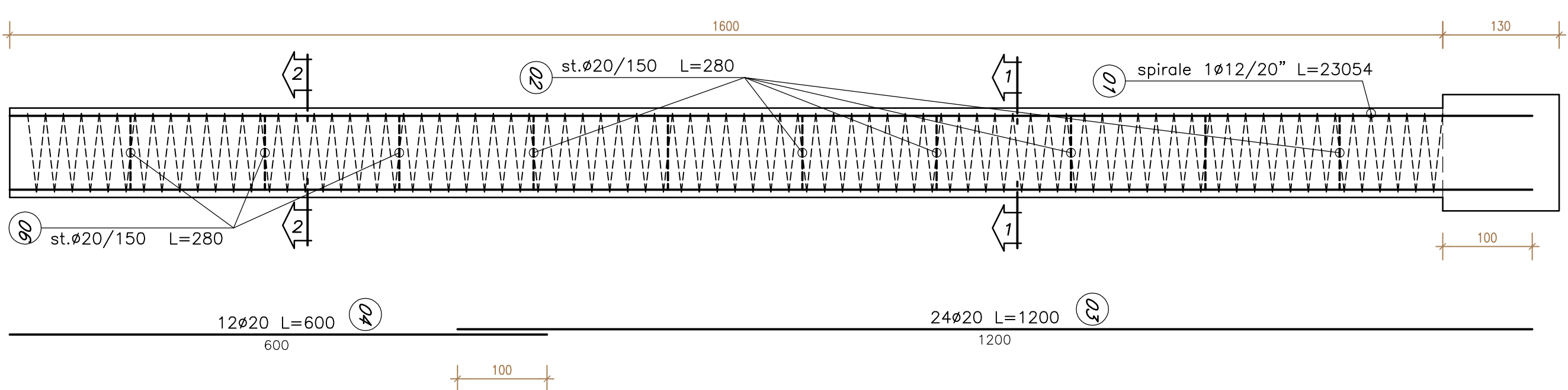
SEZIONE 1-1 scala 1:25



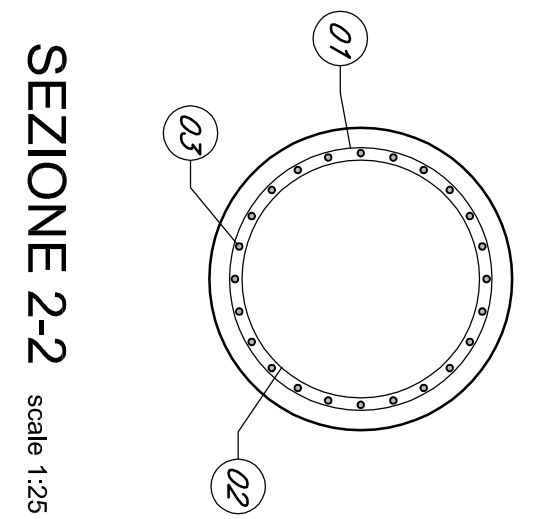
SEZIONE 2-2 scala 1:25



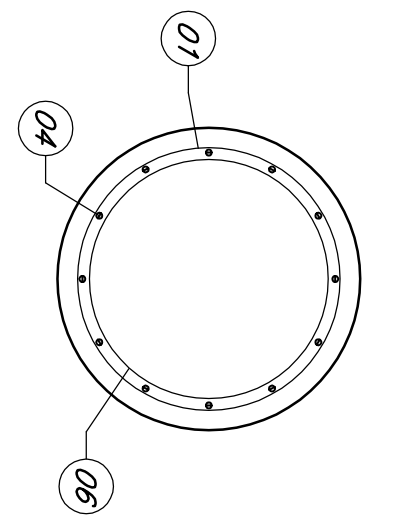
PALO L=16,0m scala 1:50
ARMATURA



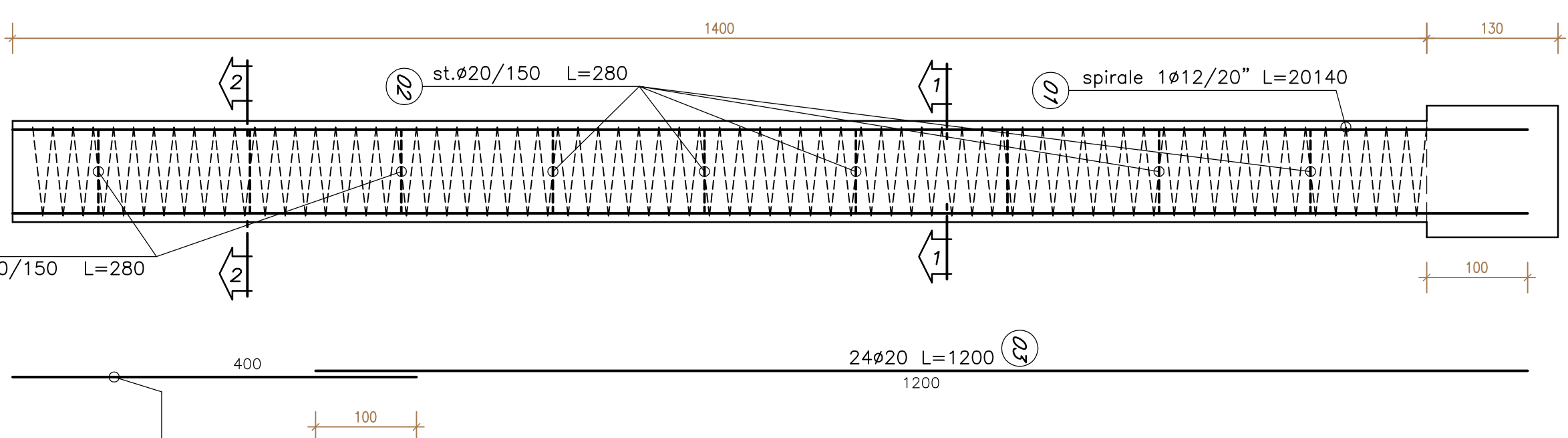
SEZIONE 1-1 scala 1:25



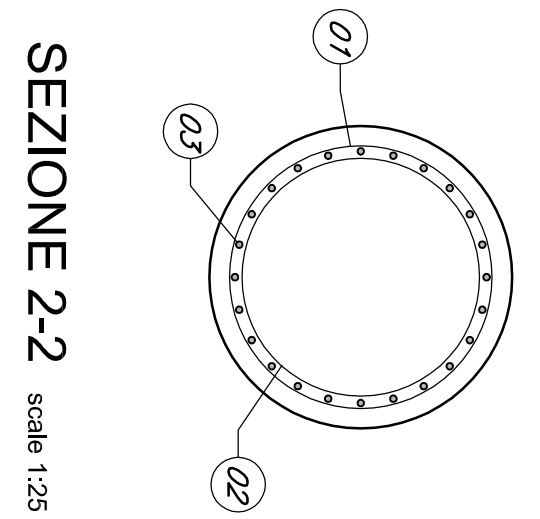
SEZIONE 2-2 scala 1:25



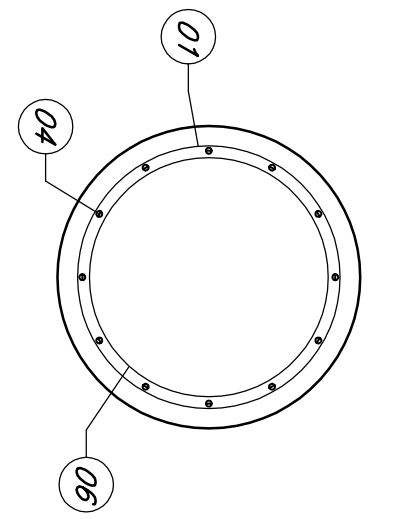
PALO L=14,0m scala 1:50
ARMATURA



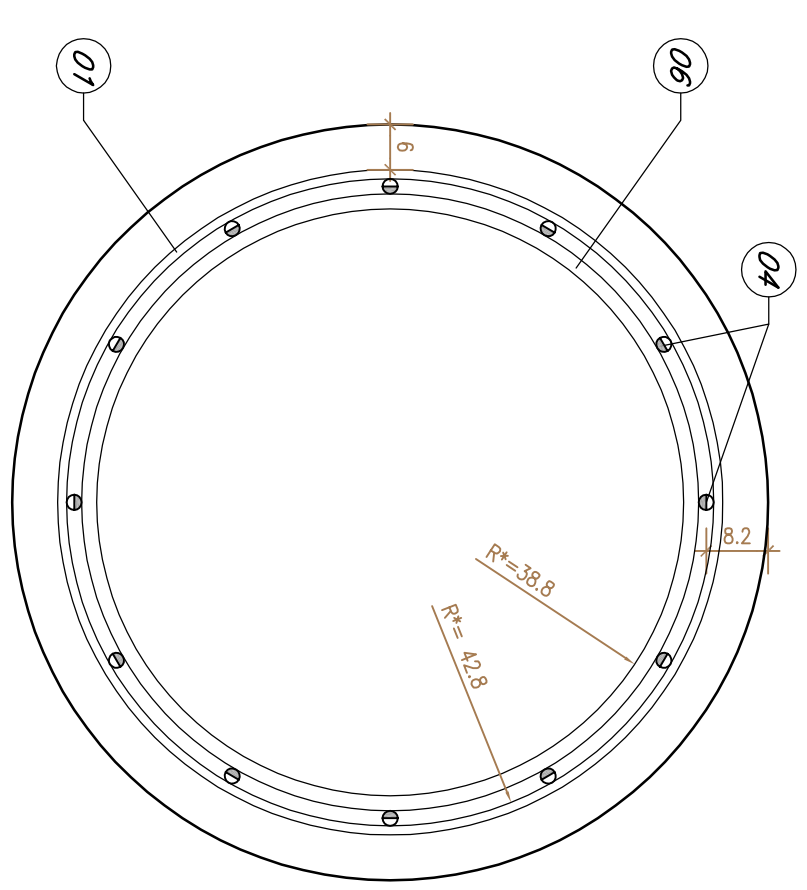
SEZIONE 1-1 scala 1:25



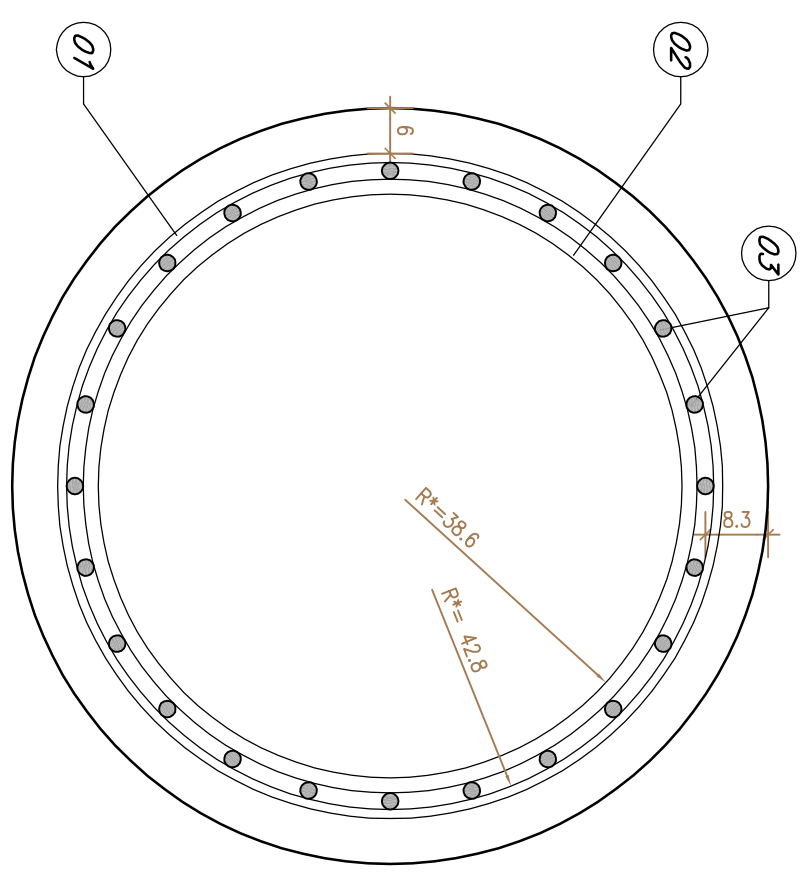
SEZIONE 2-2 scala 1:25



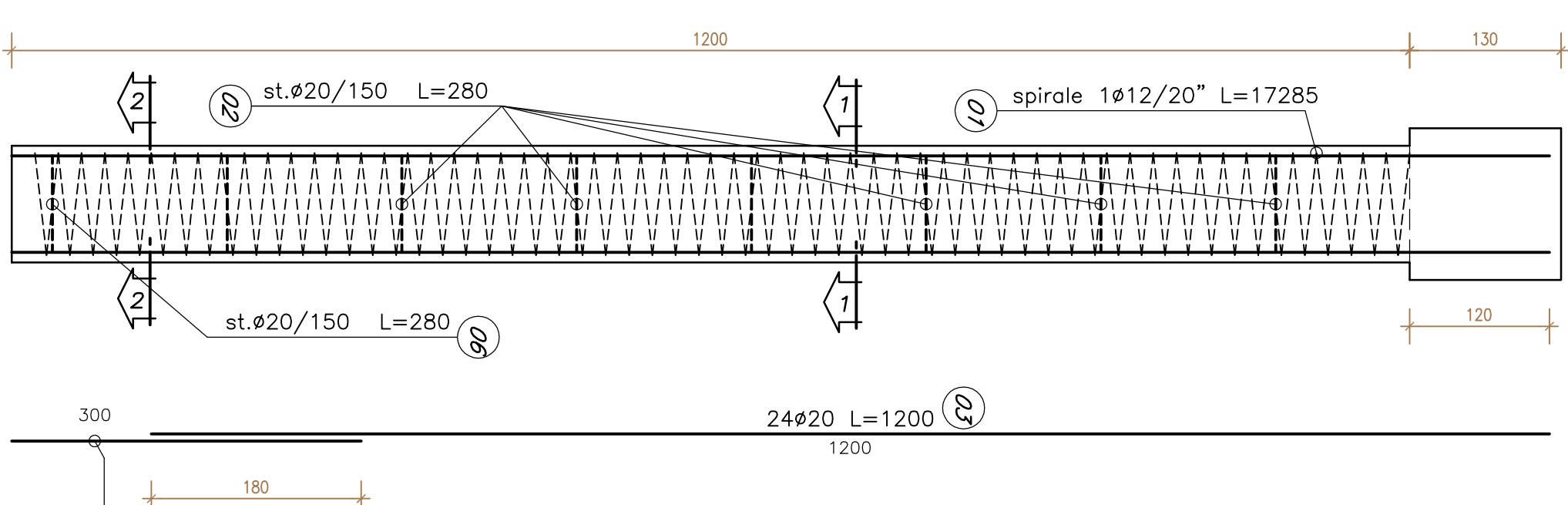
SEZIONE Y-Y scala 1:10



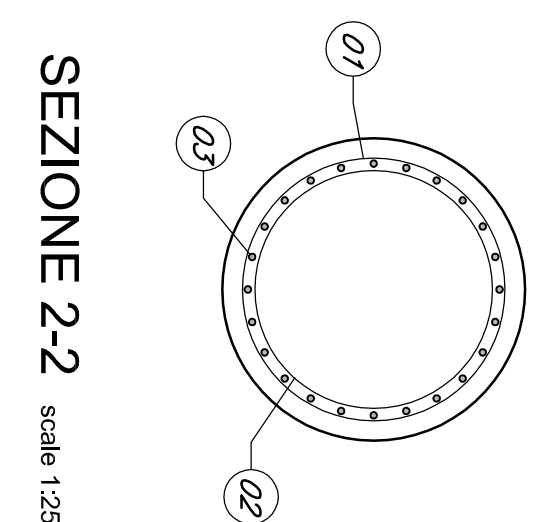
SEZIONE X-X scala 1:10



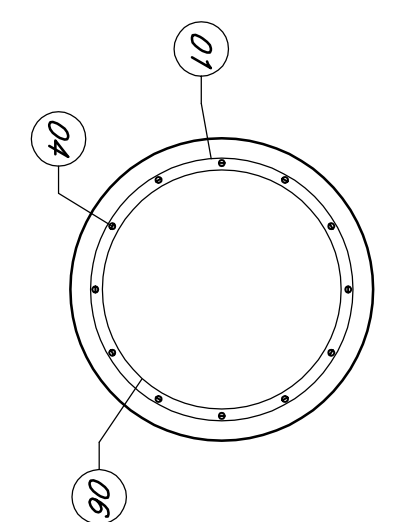
PALO L=12,0m scala 1:50
ARMATURA



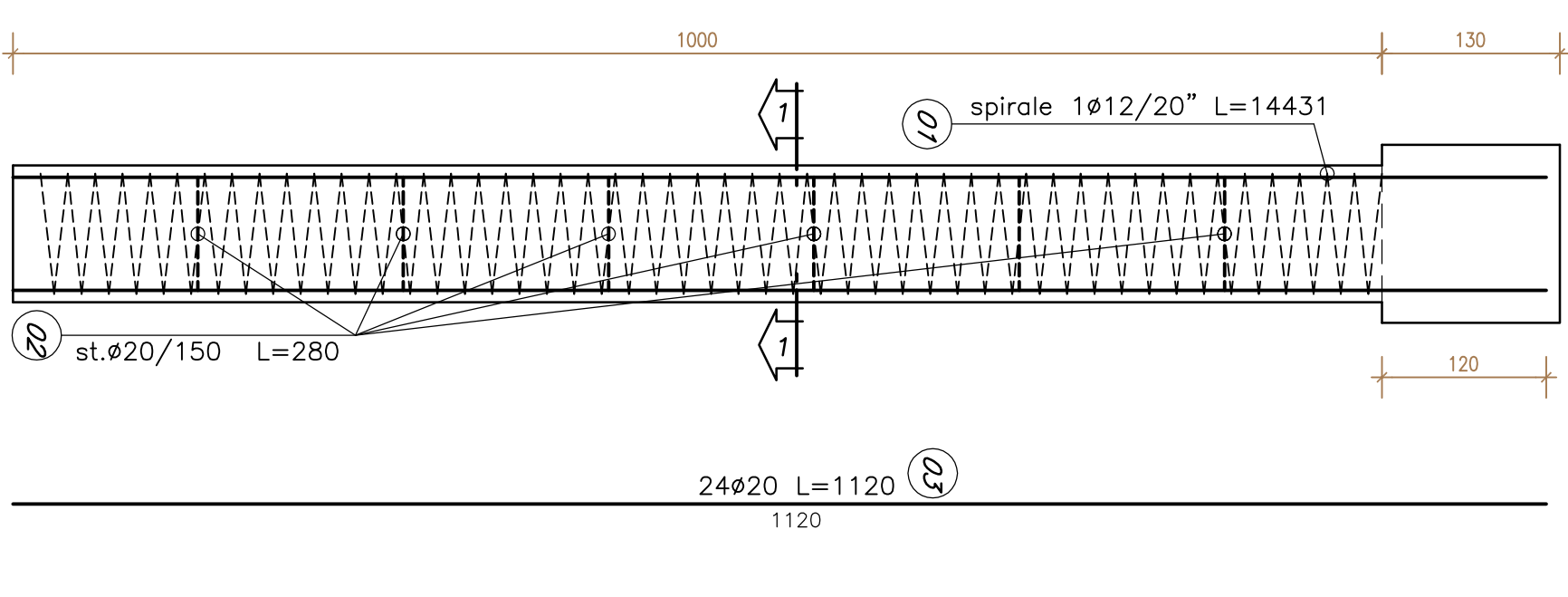
SEZIONE 1-1 scala 1:25



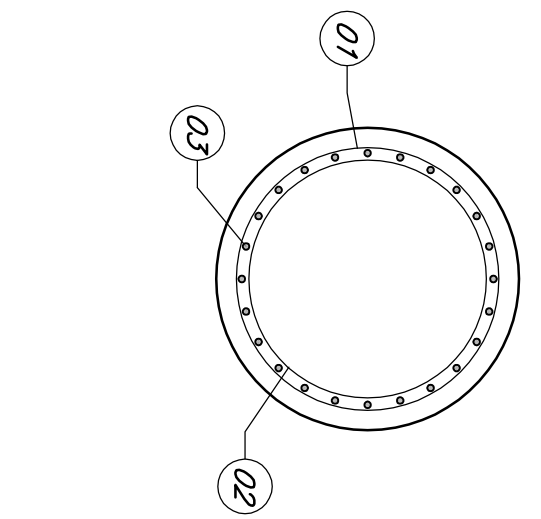
SEZIONE 2-2 scala 1:25



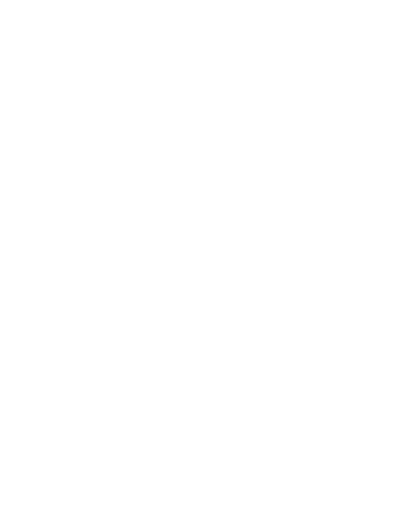
PALO L=10,0m scala 1:50
ARMATURA



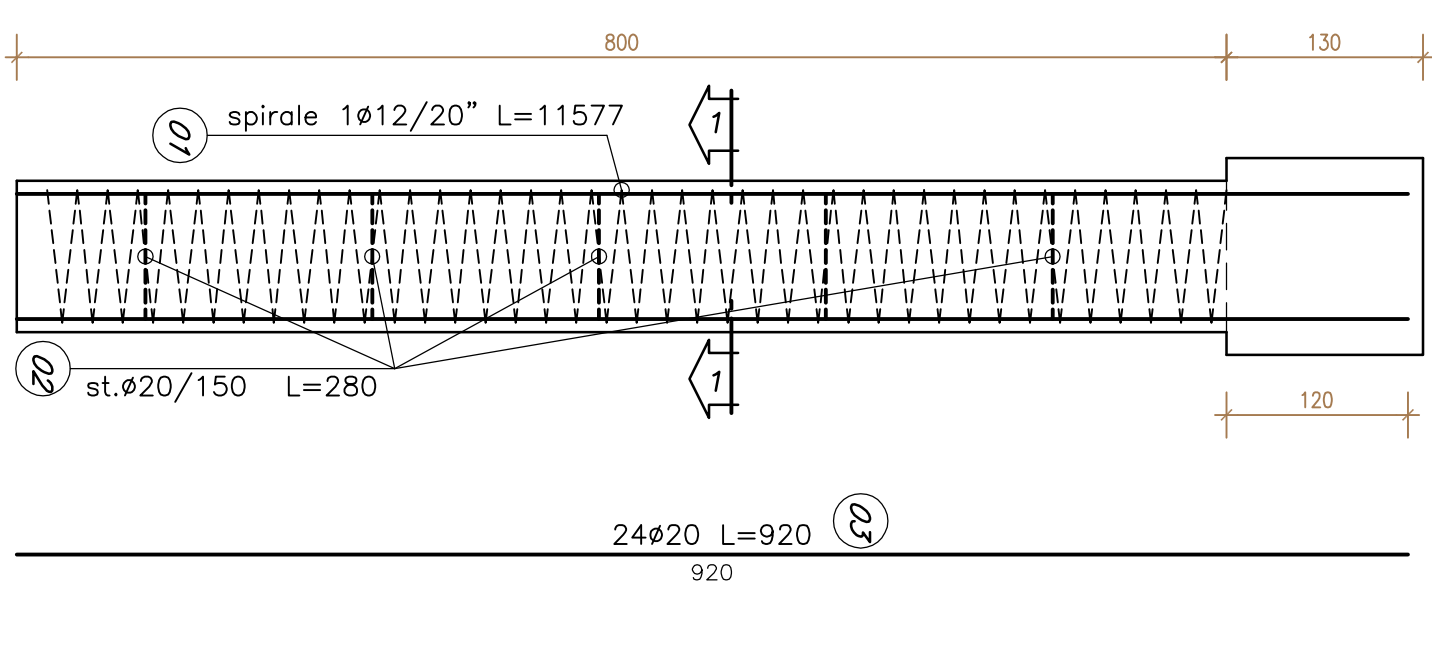
SEZIONE 1-1 scala 1:25



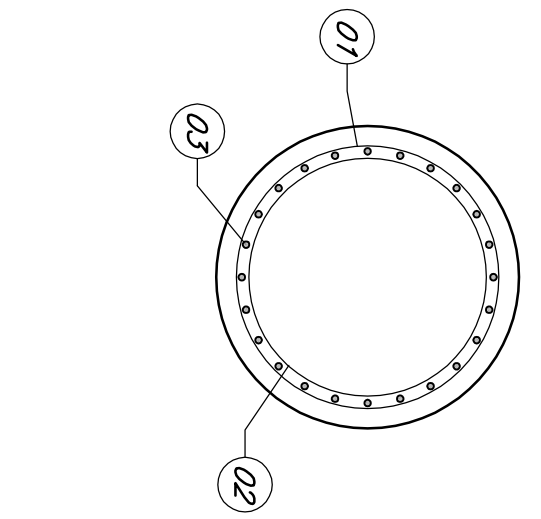
SEZIONE 2-2 scala 1:25



PALO L=8,0m scala 1:50
ARMATURA



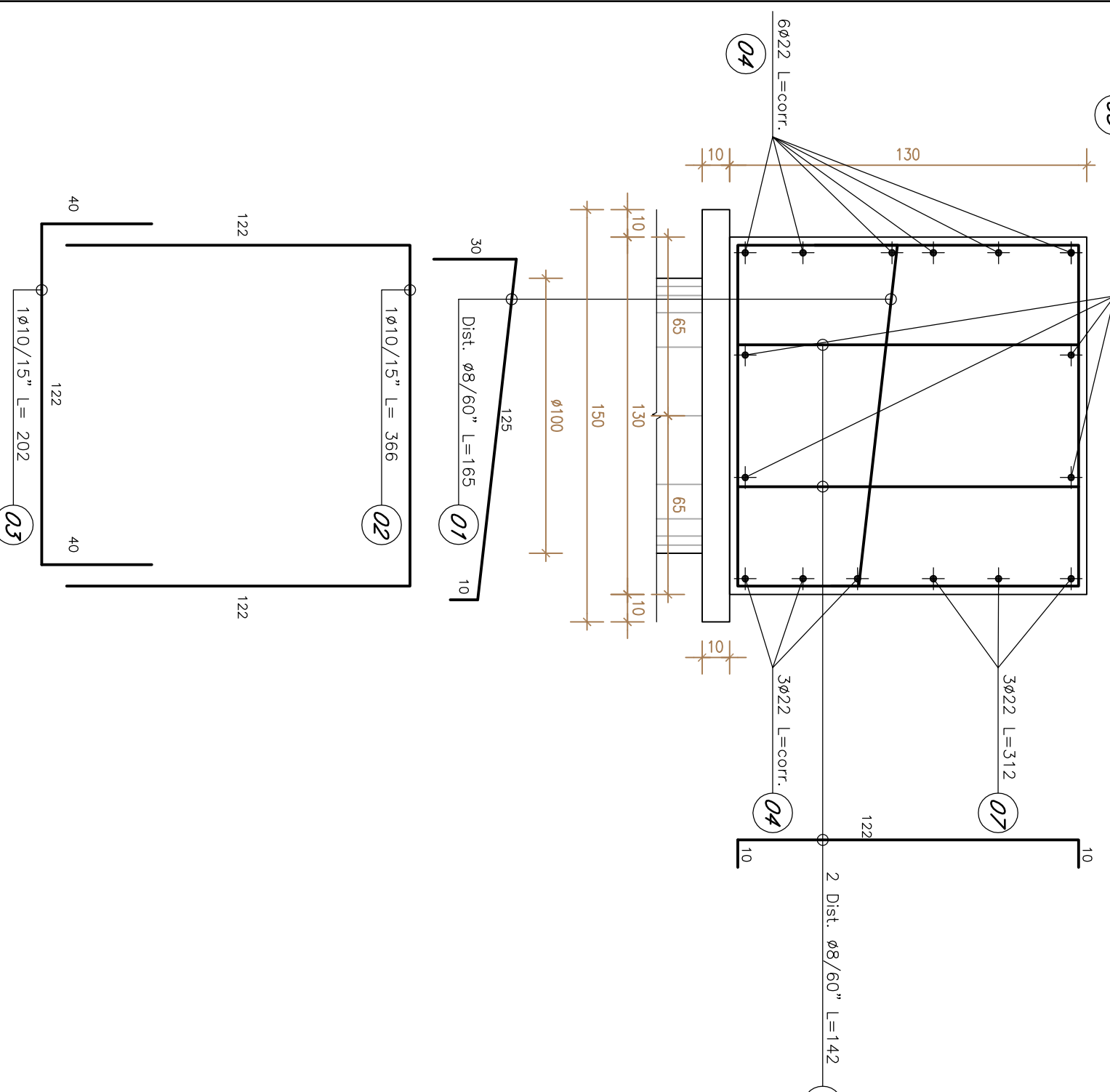
SEZIONE 1-1 scala 1:25



SEZIONE 2-2 scala 1:25



CARPENTERIA E ARMATURA TRAVE DI CORONAMENTO
SEZIONE CORRENTE scala 1:20



CARPENTERIA E ARMATURA TRAVE DI CORONAMENTO
SEZIONE L=400cm IN CORRISPONDENZA DEI TRANTI scala 1:20

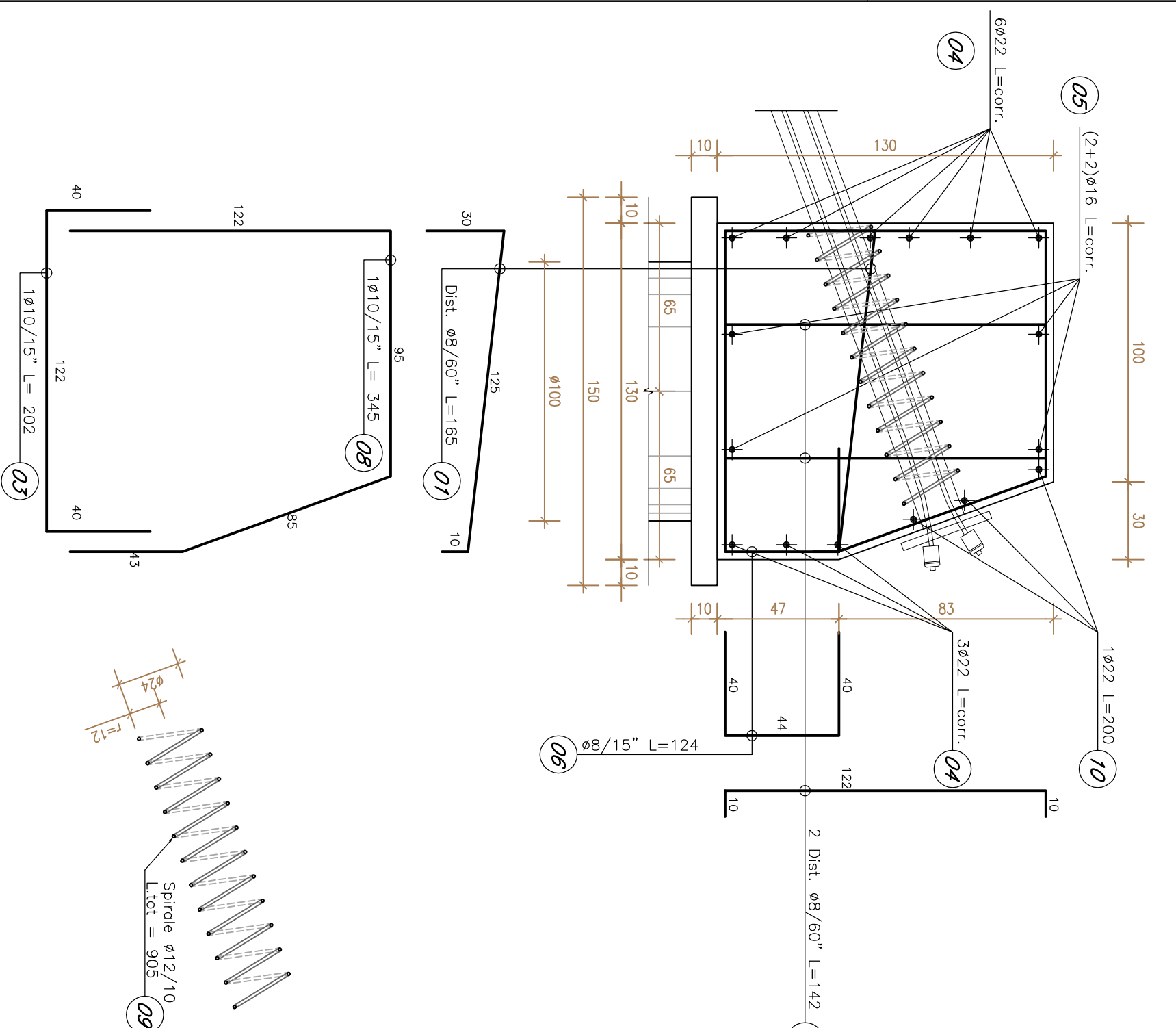


TABELLA MATERIALI PARATI DI PALE E MICROPALE

CATEGORIA	DESCRIZIONE	Quantità	Unità	Prezzo
CORRENTE	PALE DI FALDA	54	m	32
	PALE DI CORONAMENTO	54	m	32
	PALE DI SOSTEGNO	54	m	32
	PALE DI FONDEZIONE	54	m	32
MICROPALE	PALE DI FONDEZIONE	54	m	32
	PALE DI SOSTEGNO	54	m	32
ACQUA	ACQUA	54	m	32
	ACQUA	54	m	32

NOTA:

- Per il dimensionamento delle travi di coronamento si è tenuto conto della resistenza caratteristica del calcestruzzo e dell'acciaio di rinforzo, in base alle norme vigenti in materia di dimensionamento delle travi di coronamento.

ANAS S.p.A.
Società per Azioni
Via Salaria, 1000 - 00198 Roma
Tel. 06/49811 - Telex 320321 - Fax 06/4981111

PERIZIA DI VARIANTE N. 1 -
MODIFICA TECNICA N. 52
OPERE DI SOSTEGNO - ASSE PRINCIPALE - Lotto 2b - Asse destro
OS49 - Parallele di pali dx dal km 32+150,07 al km 32+399,77
Carpenteria e armatura

Codice Unico Progetto (CUP): FA1B03000230001

Codice elaborato: PA17/08 [PE] 05/49 [N] 01/04 [5] 0

ACS ingegneri
Via Salaria, 1000 - 00198 Roma
Tel. 06/49811 - Telex 320321 - Fax 06/4981111

PROTOCOLLO
Data: 10/04/10
Codice Progetto: 10411006E11011

PROF. ING. ENZO DI CARO
Via Salaria, 1000 - 00198 Roma
Tel. 06/49811 - Telex 320321 - Fax 06/4981111