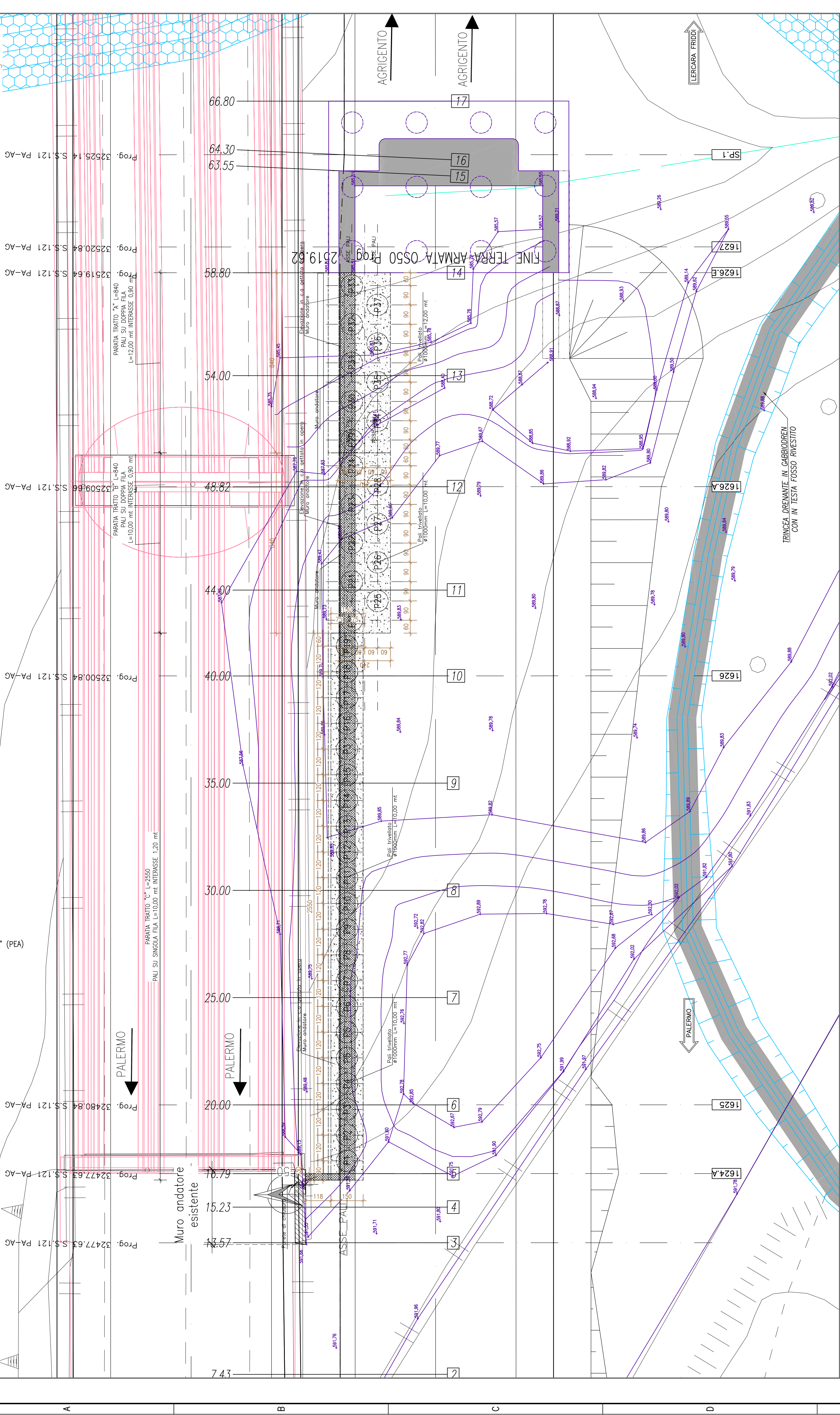
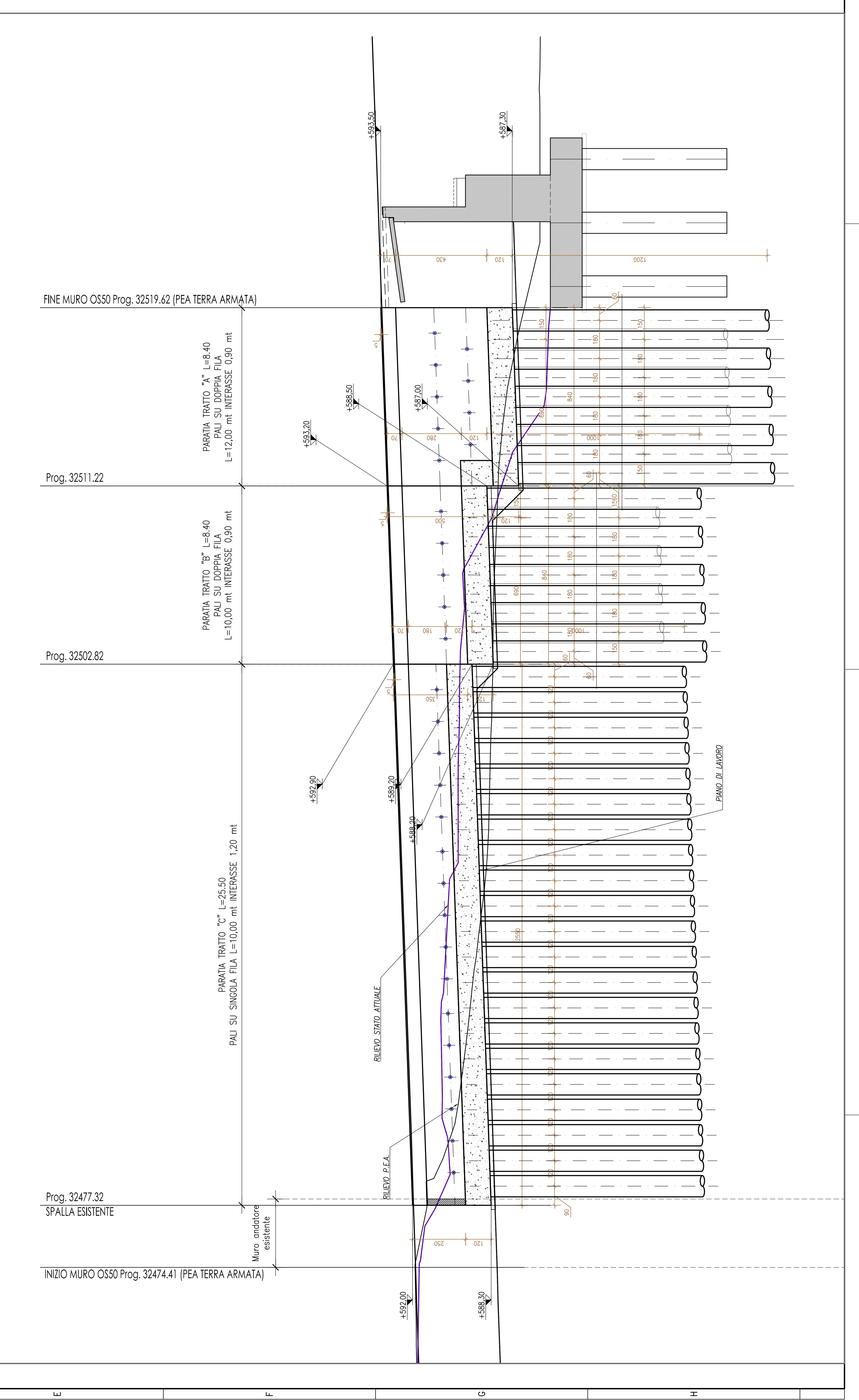


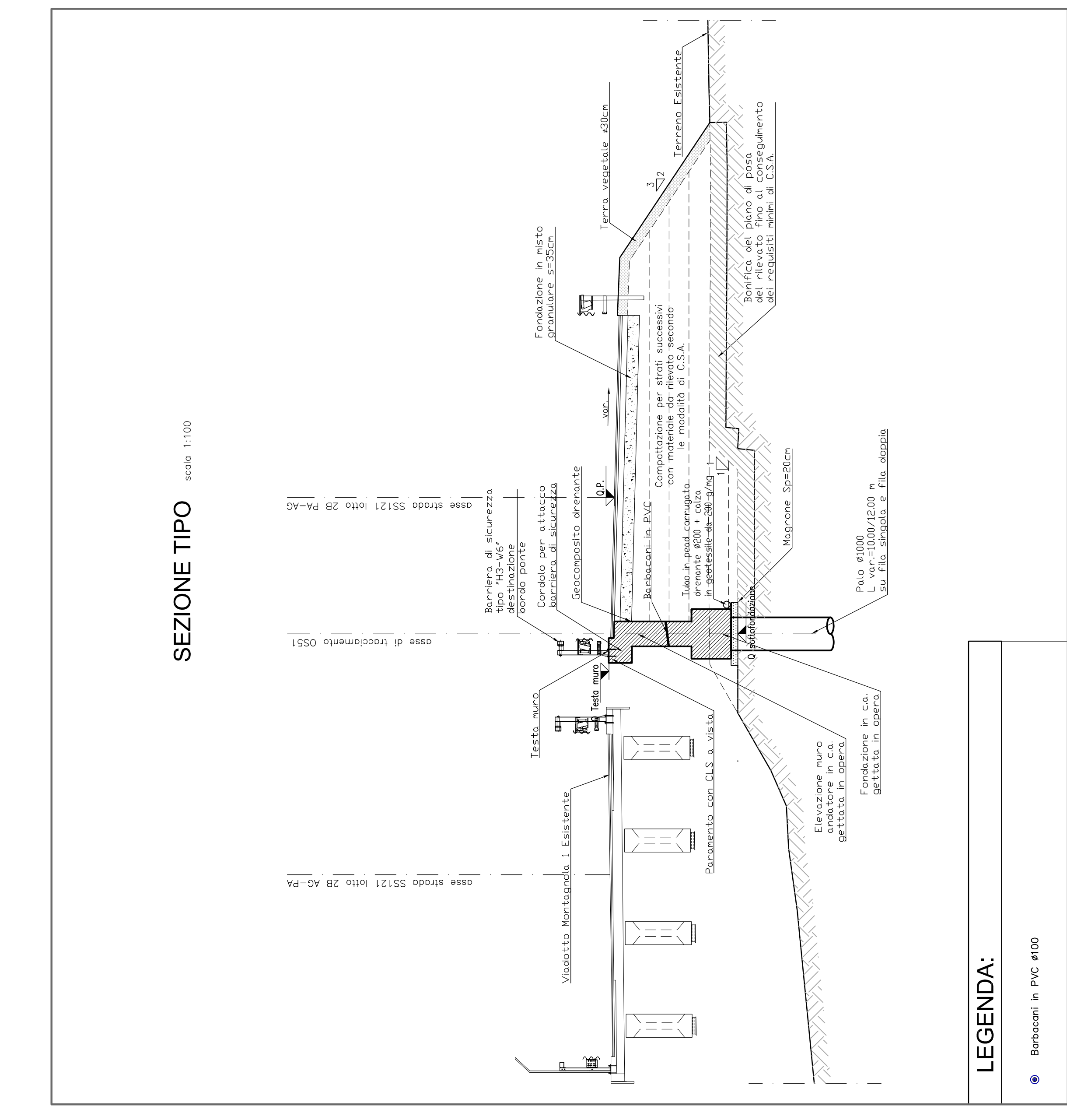
PLANIMETRIA



PROFILLO LONGITUDINALE



SEZIONE TIPO



LEGENDA:

- Barrazioni in PVC 4/10

NOTE:

- La progressione delle altezze della strada S.S. 121 del Tr. AG - PA - è stata calcolata con riferimento all'asse della curva.

NOTA IDRAULICA:

- Per maggiori dettagli in merito alle informazioni idrauliche inerenti al progetto si rimanda al progetto di studio idraulico.

KEY-PLAN

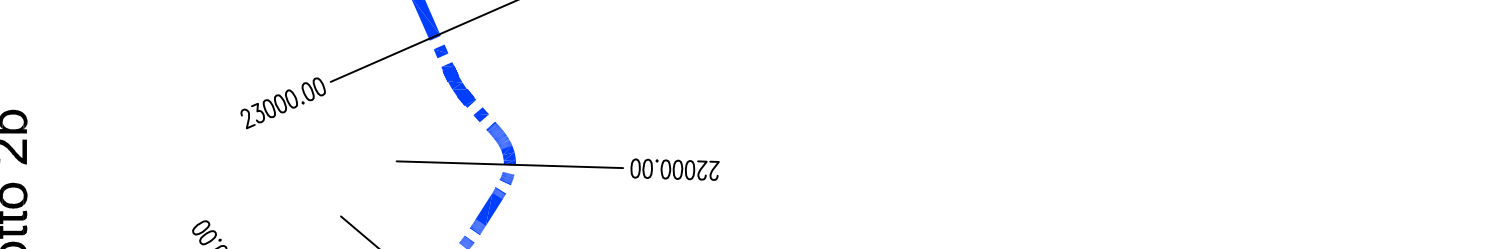
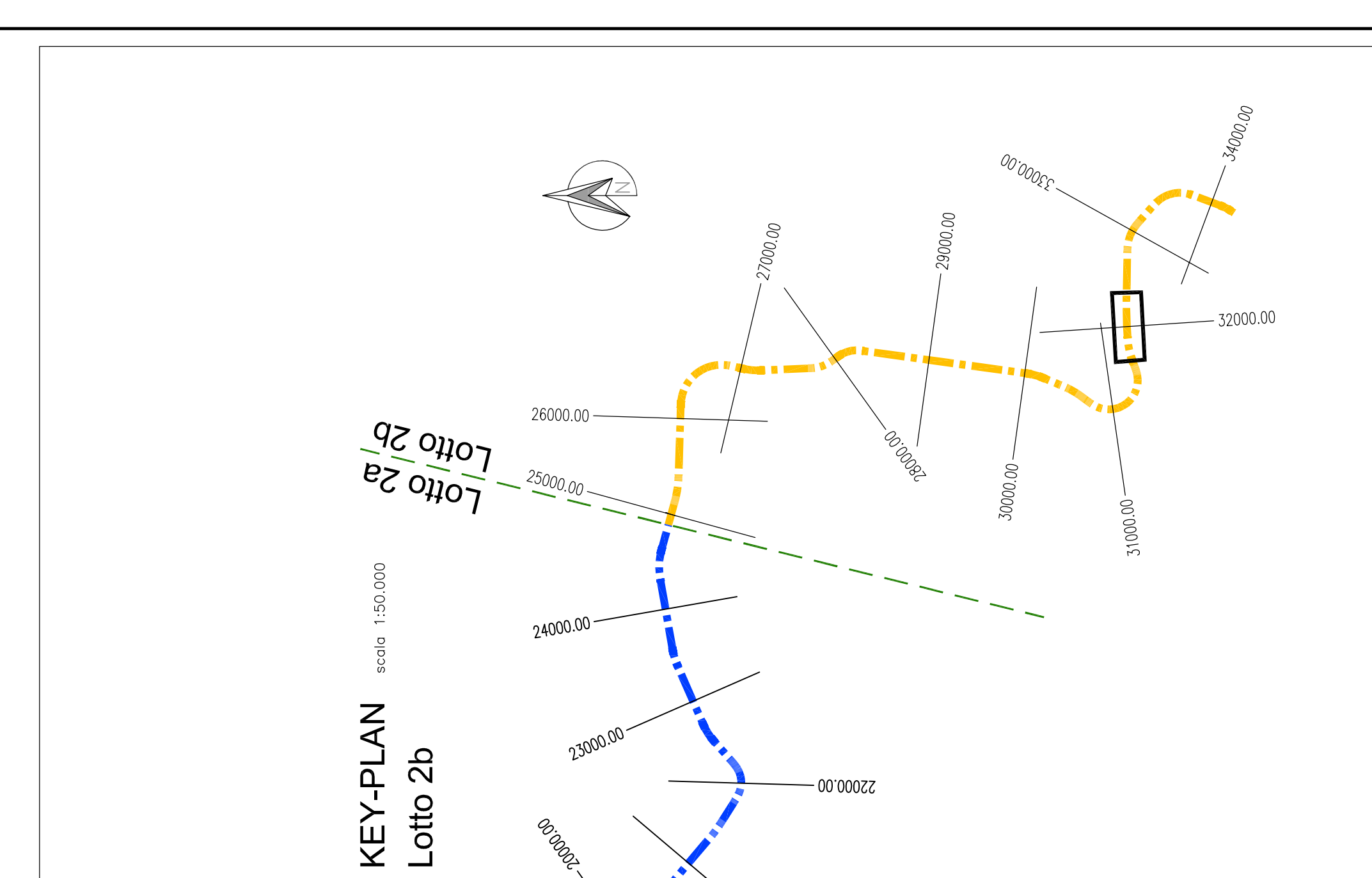


Table with 2 columns: 'CANTONIERI' and 'CANTONIERI'. It lists various materials and quantities for the project.

Tabella Materiali Muri Andatori. This table provides a detailed list of materials and their quantities for the wall construction.

Additional notes and specifications regarding the project, including references to other documents and technical standards.



Project information block including ANAS S.p.A. logo, project name 'MODIFICA TECNICA N. 99 OPERE DI SOSTEGNO - ASSE PRINCIPALE - Lotto 2b - Asse destro OS50 - Muro andatore dx dal km 32+477.33 al km 32+519.64', and various technical and administrative details.