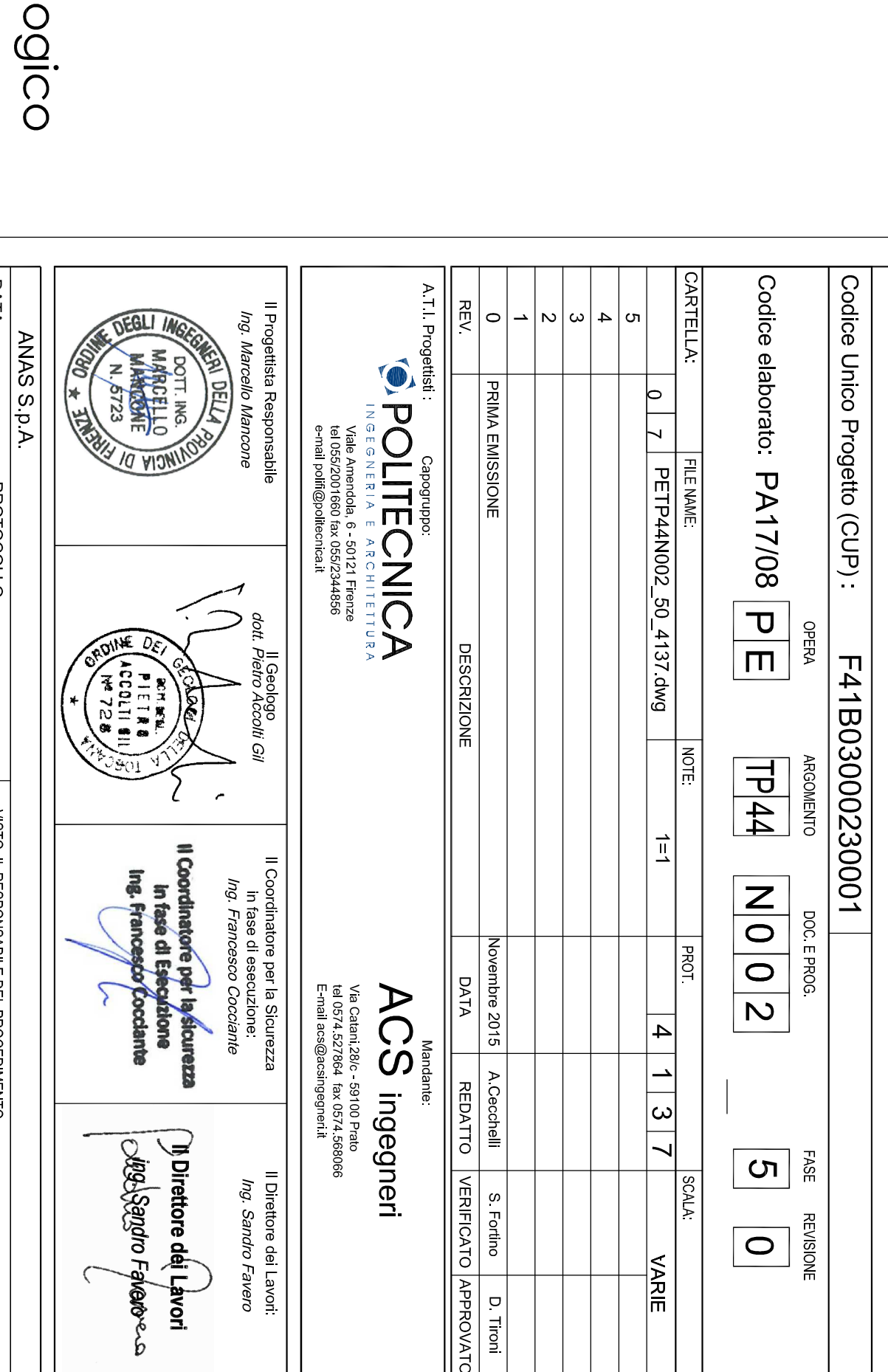
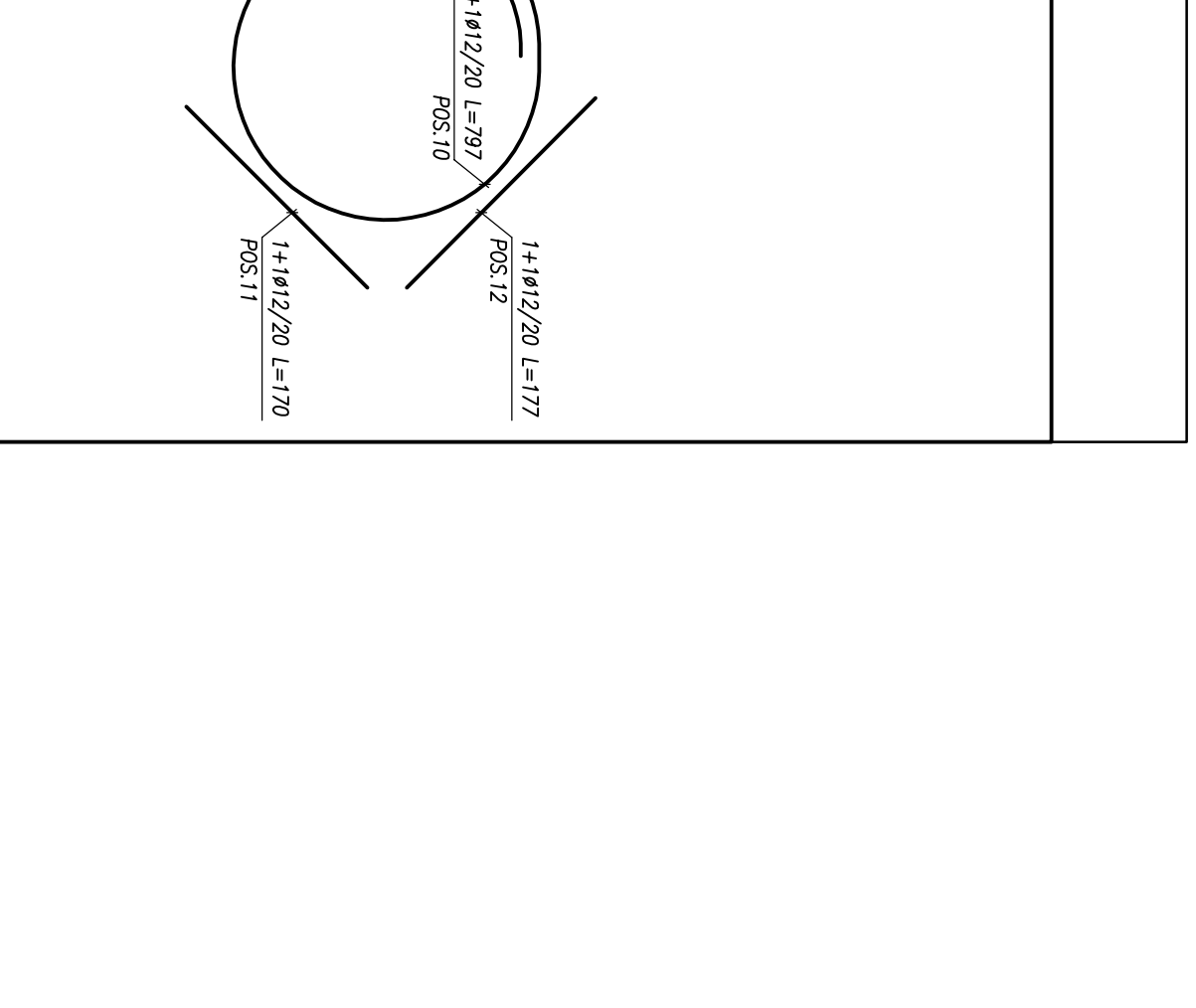
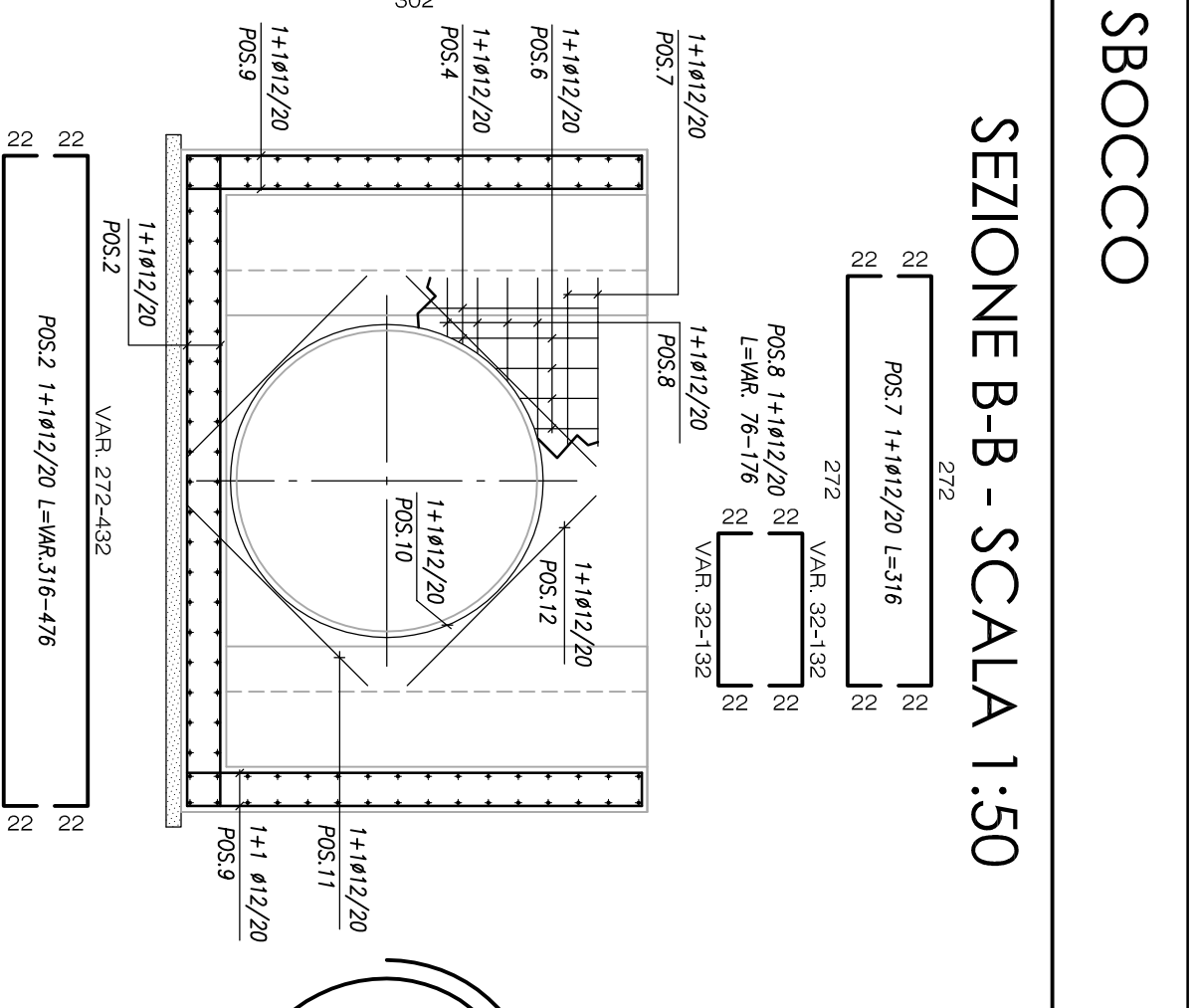
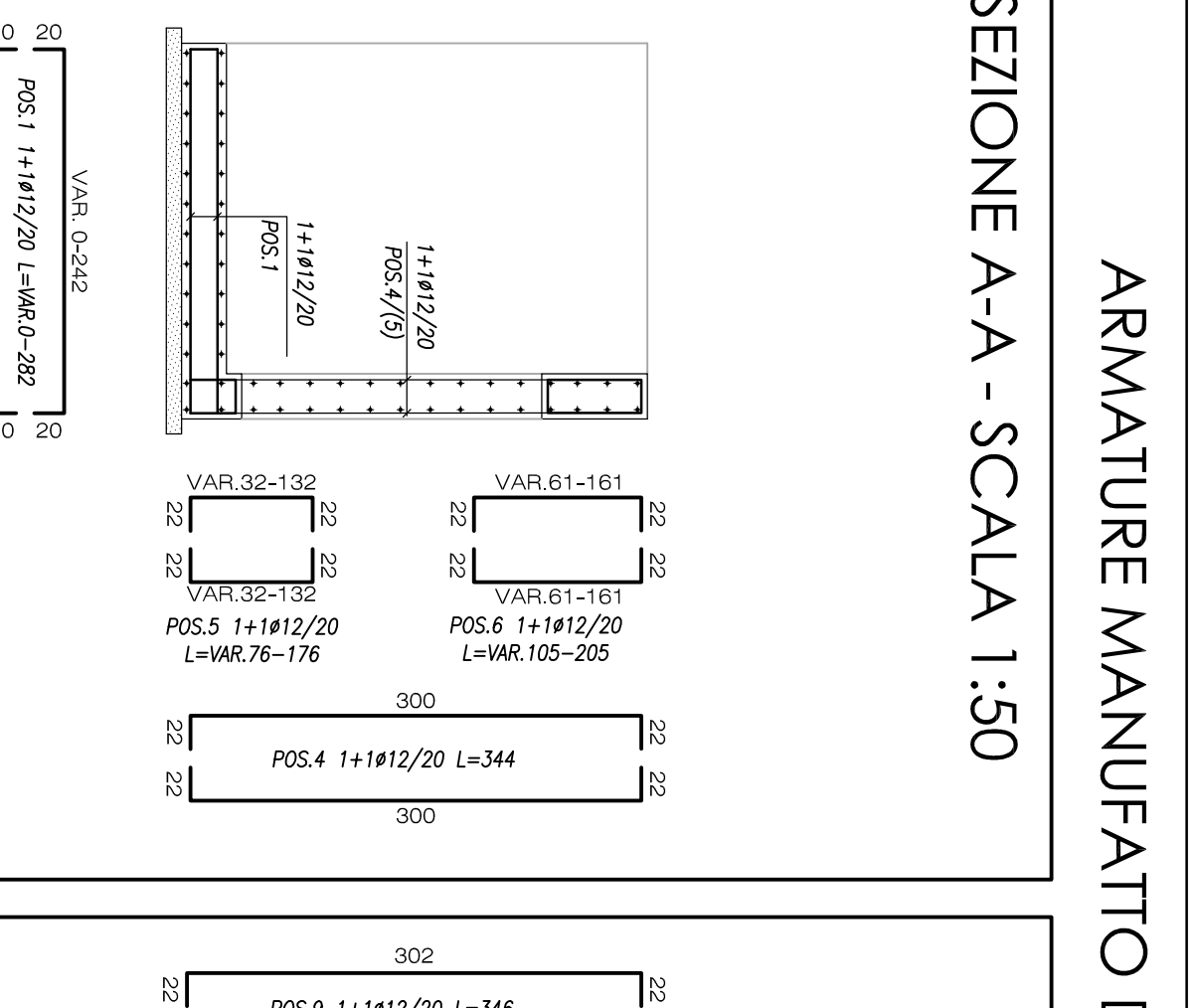
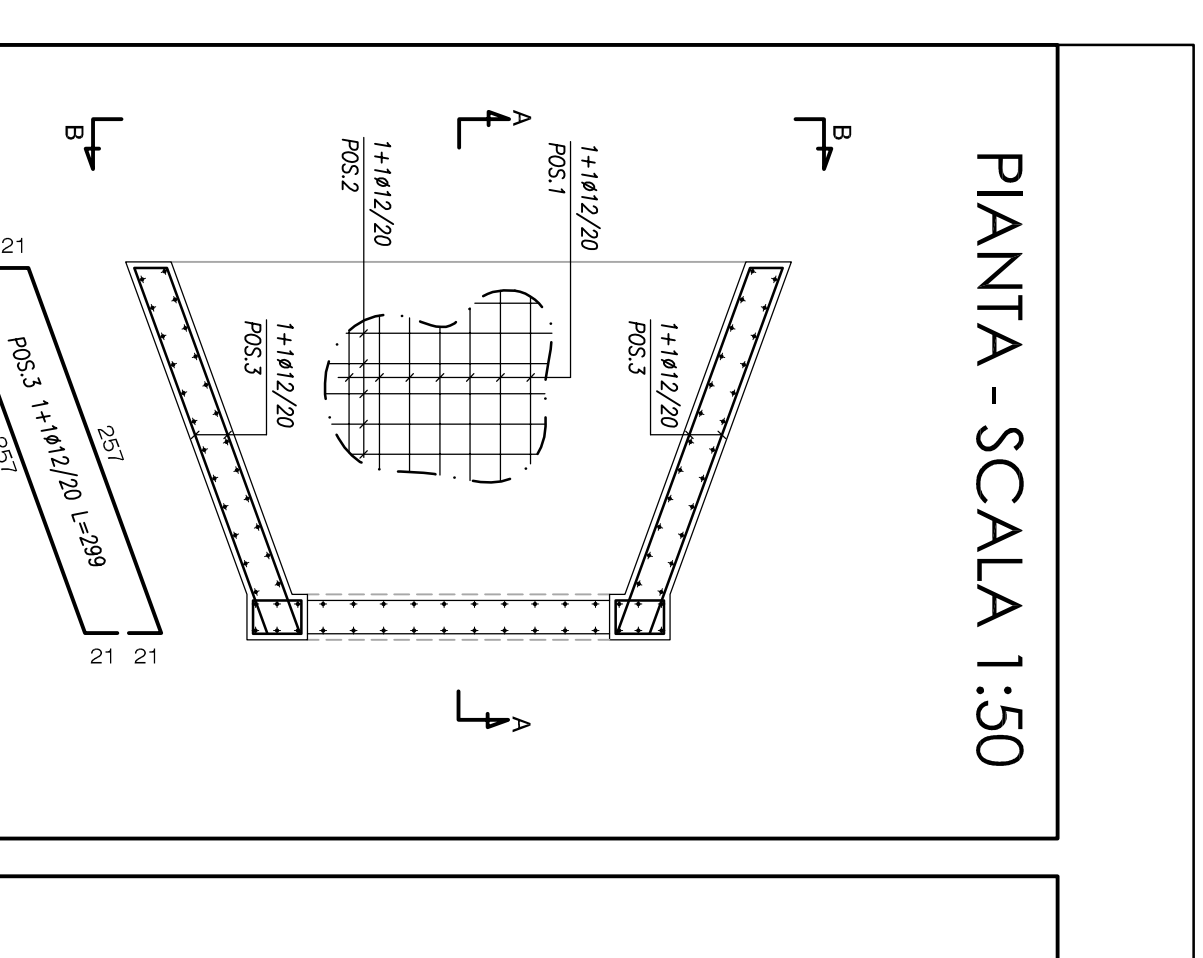
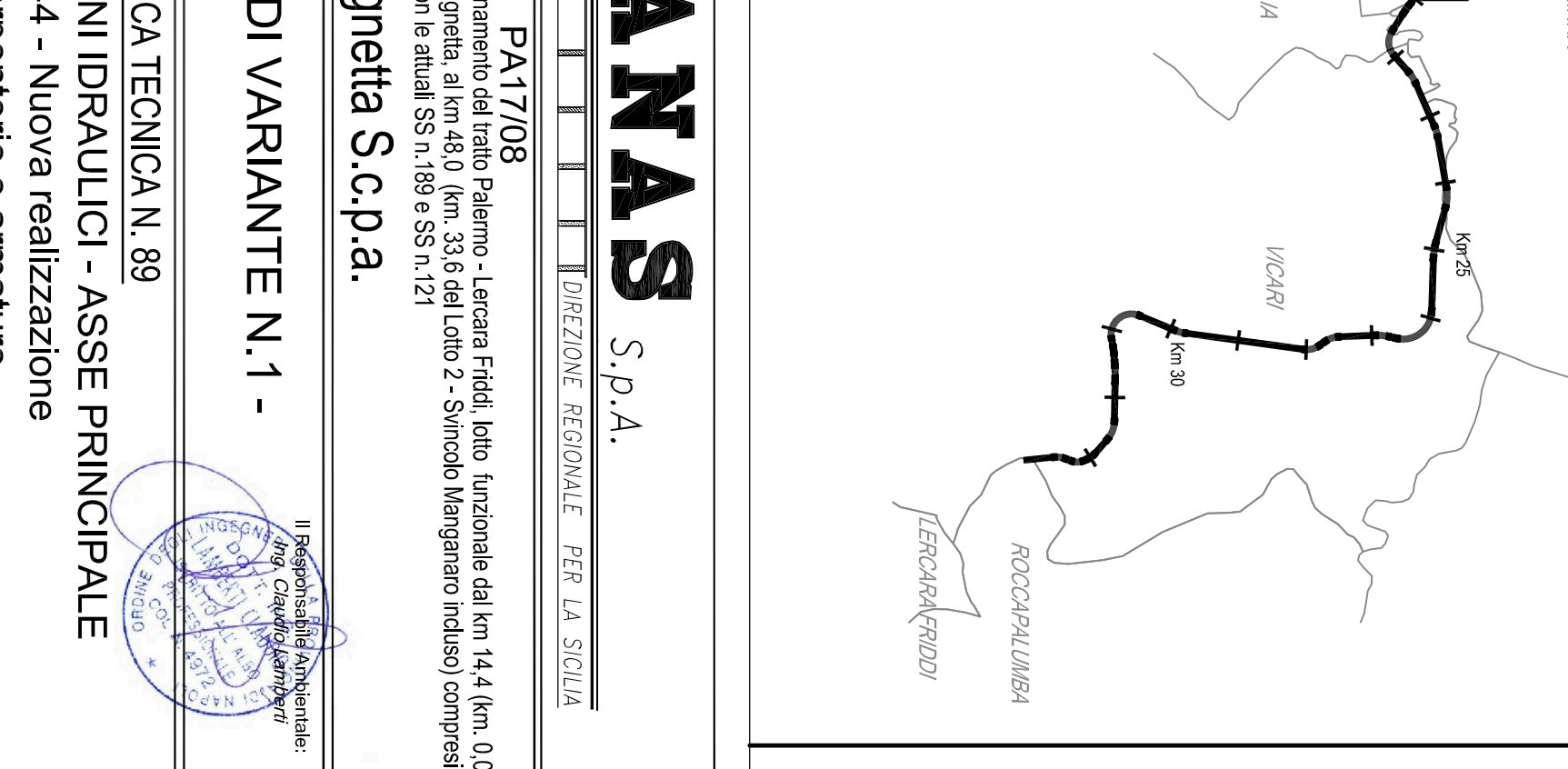
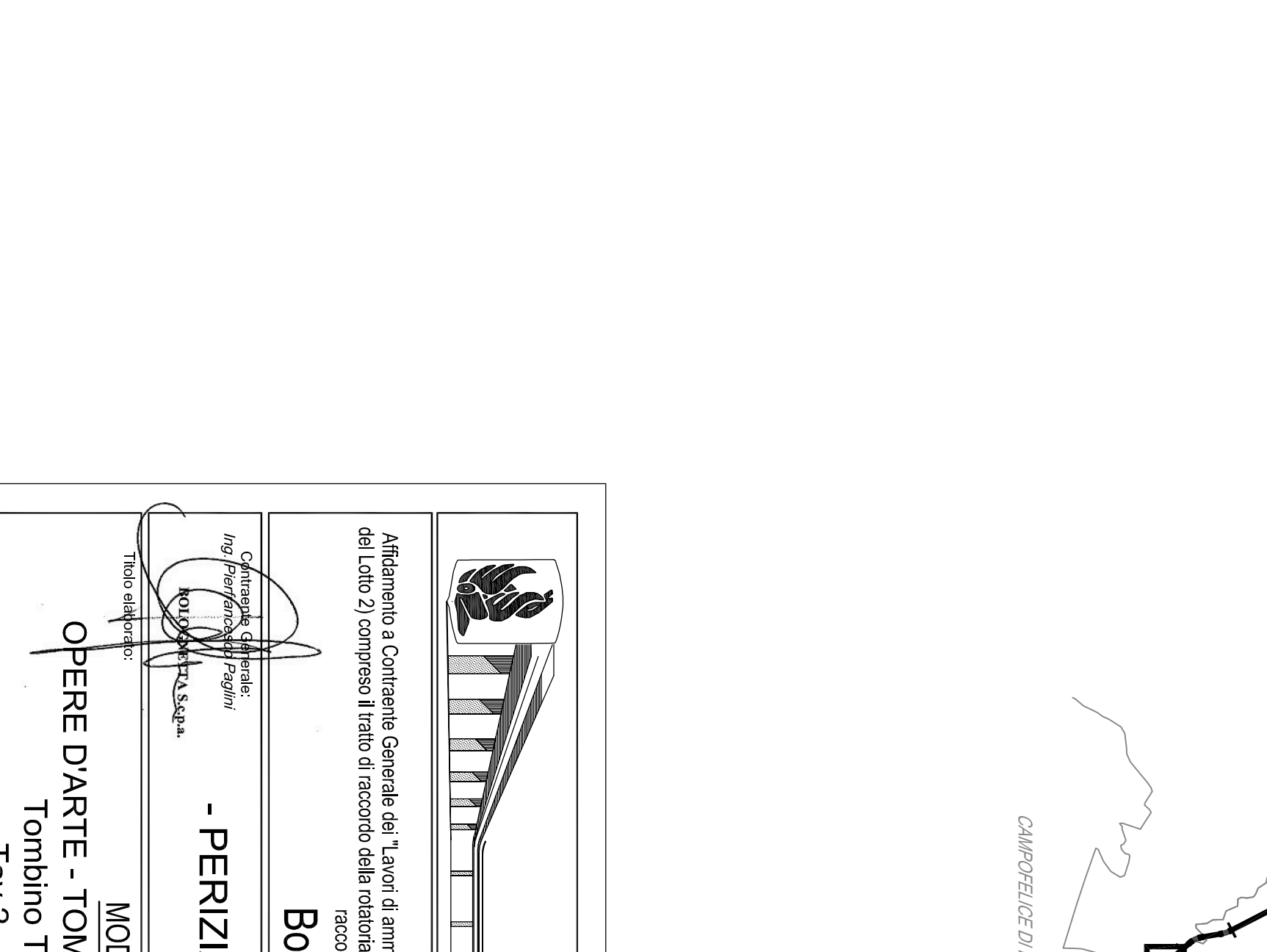
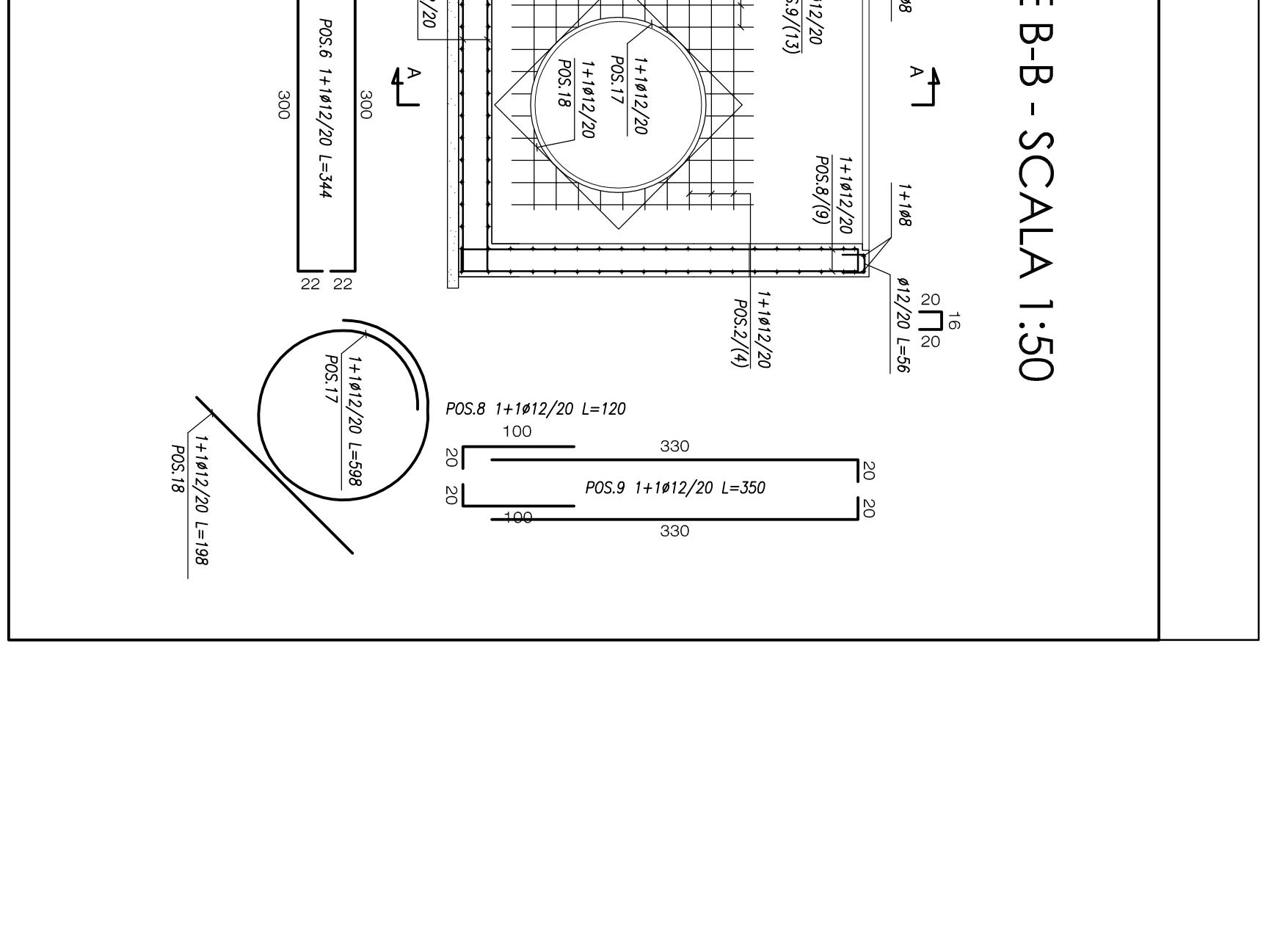
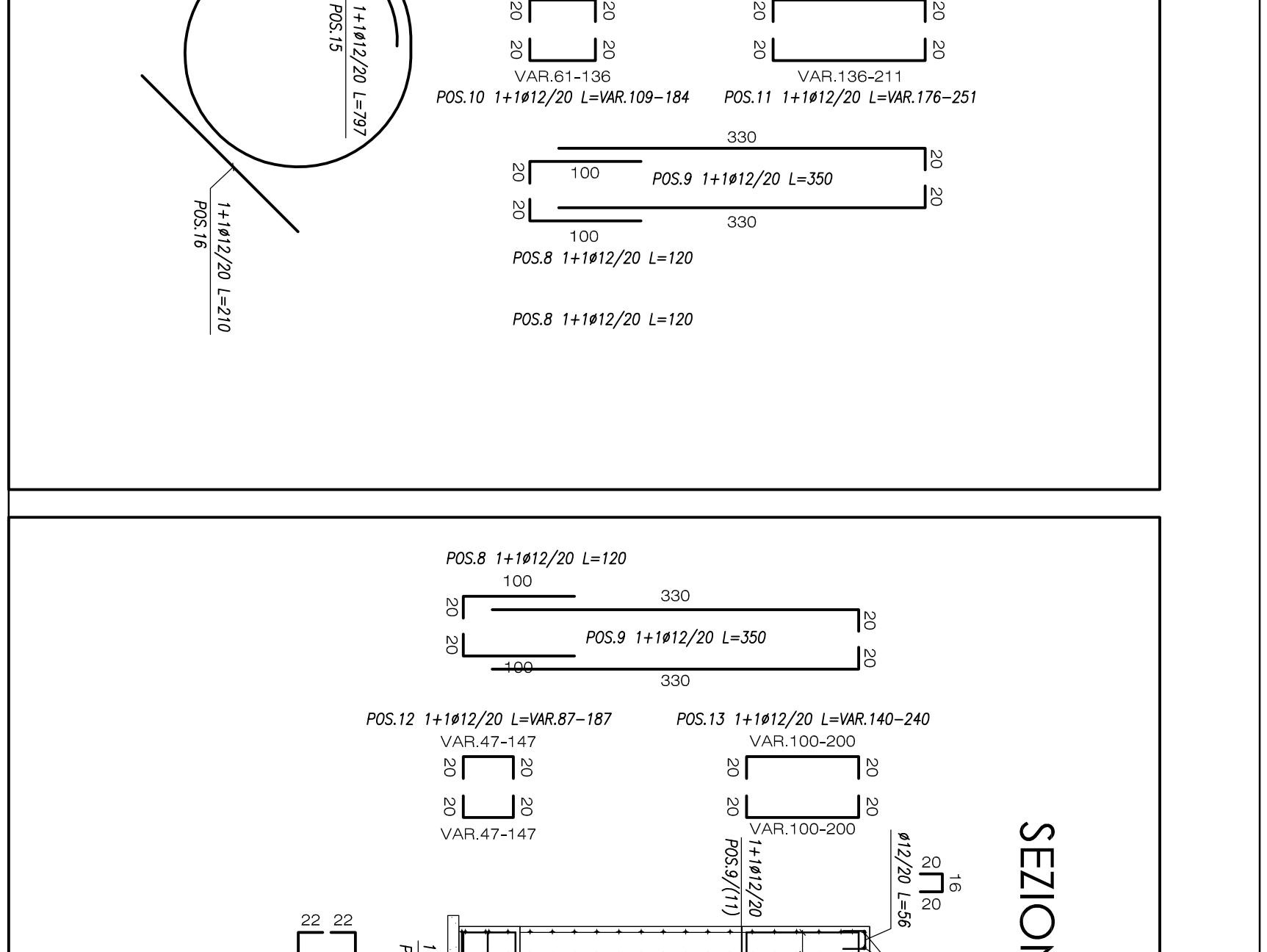
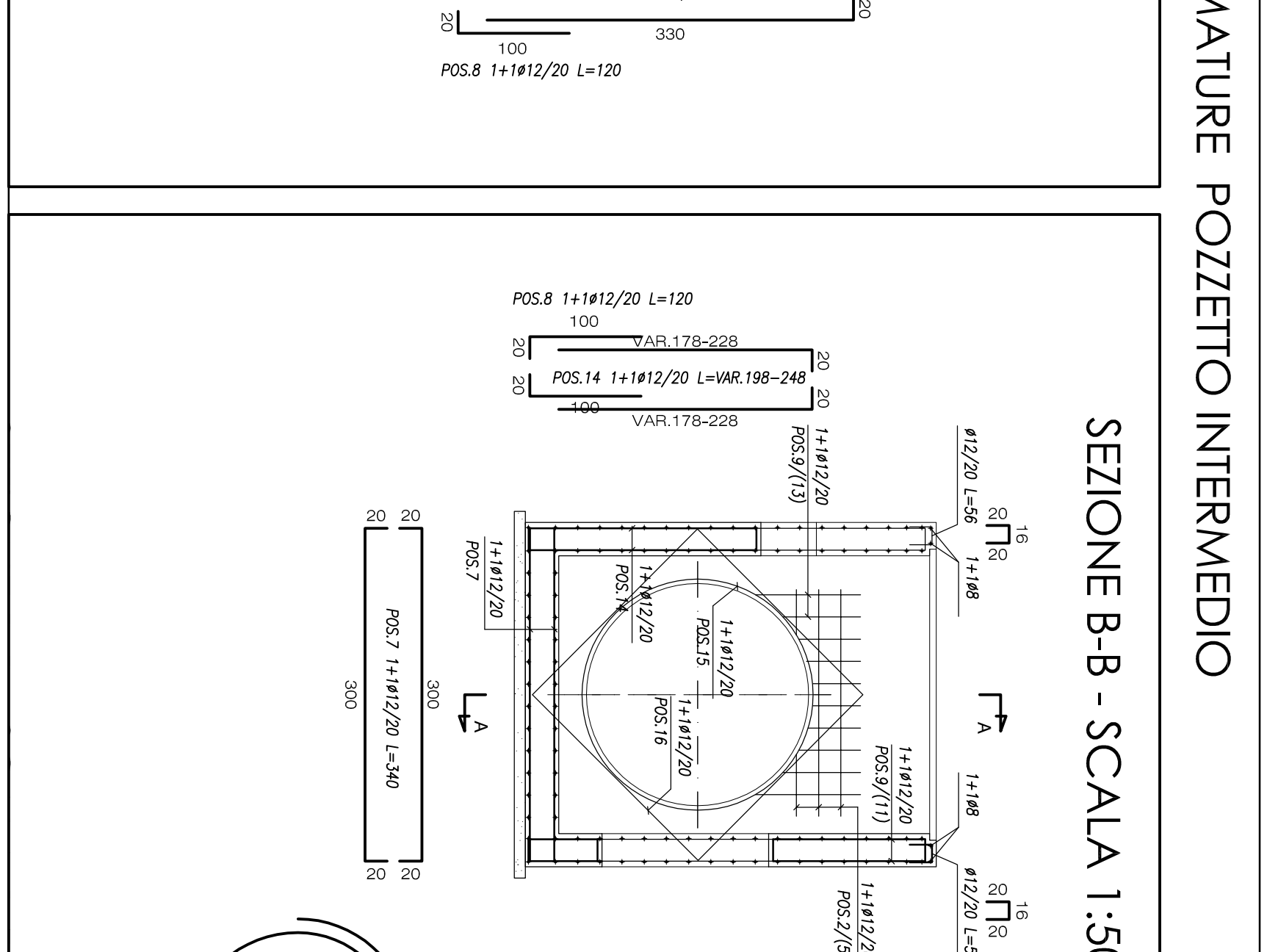
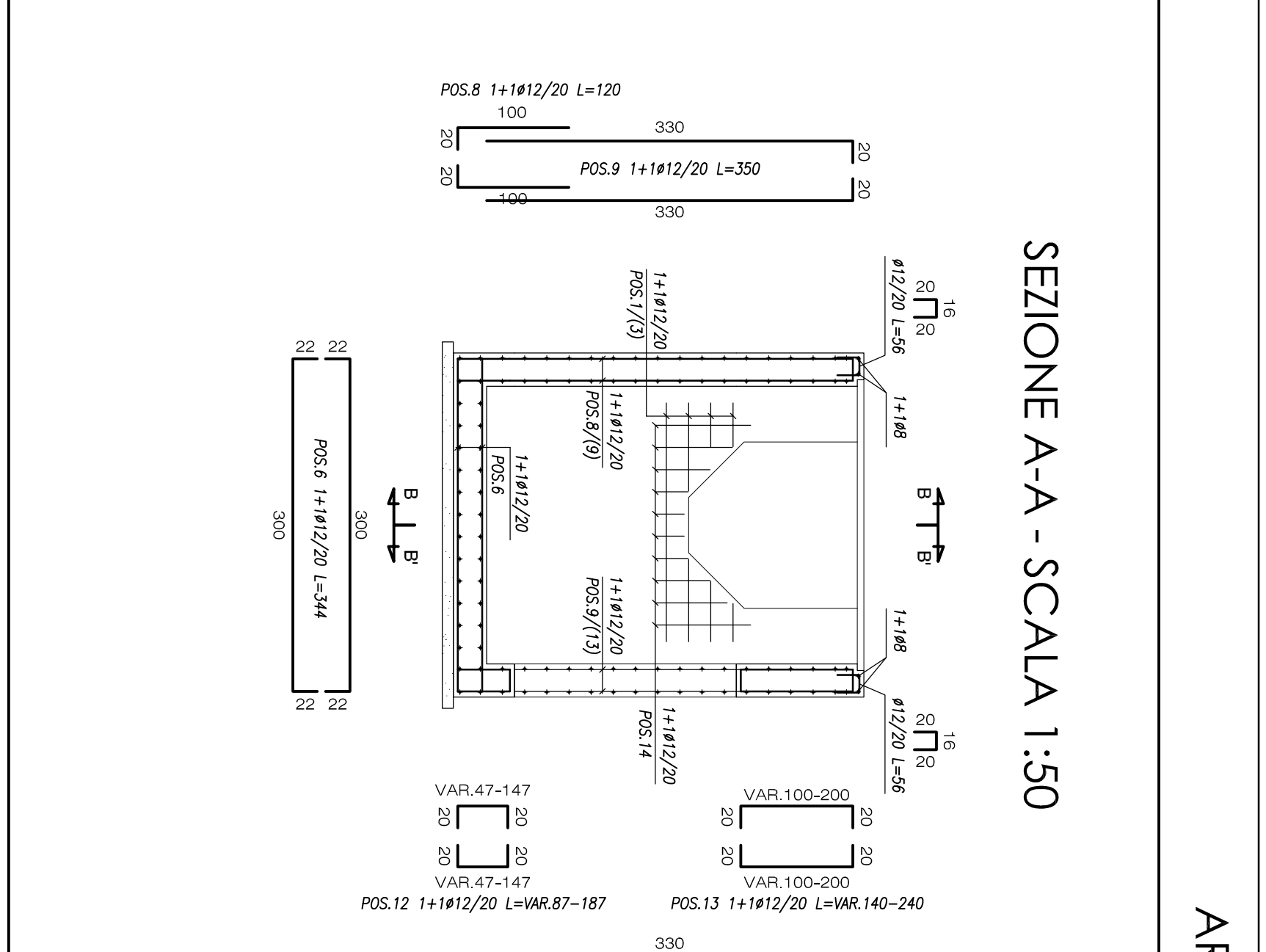
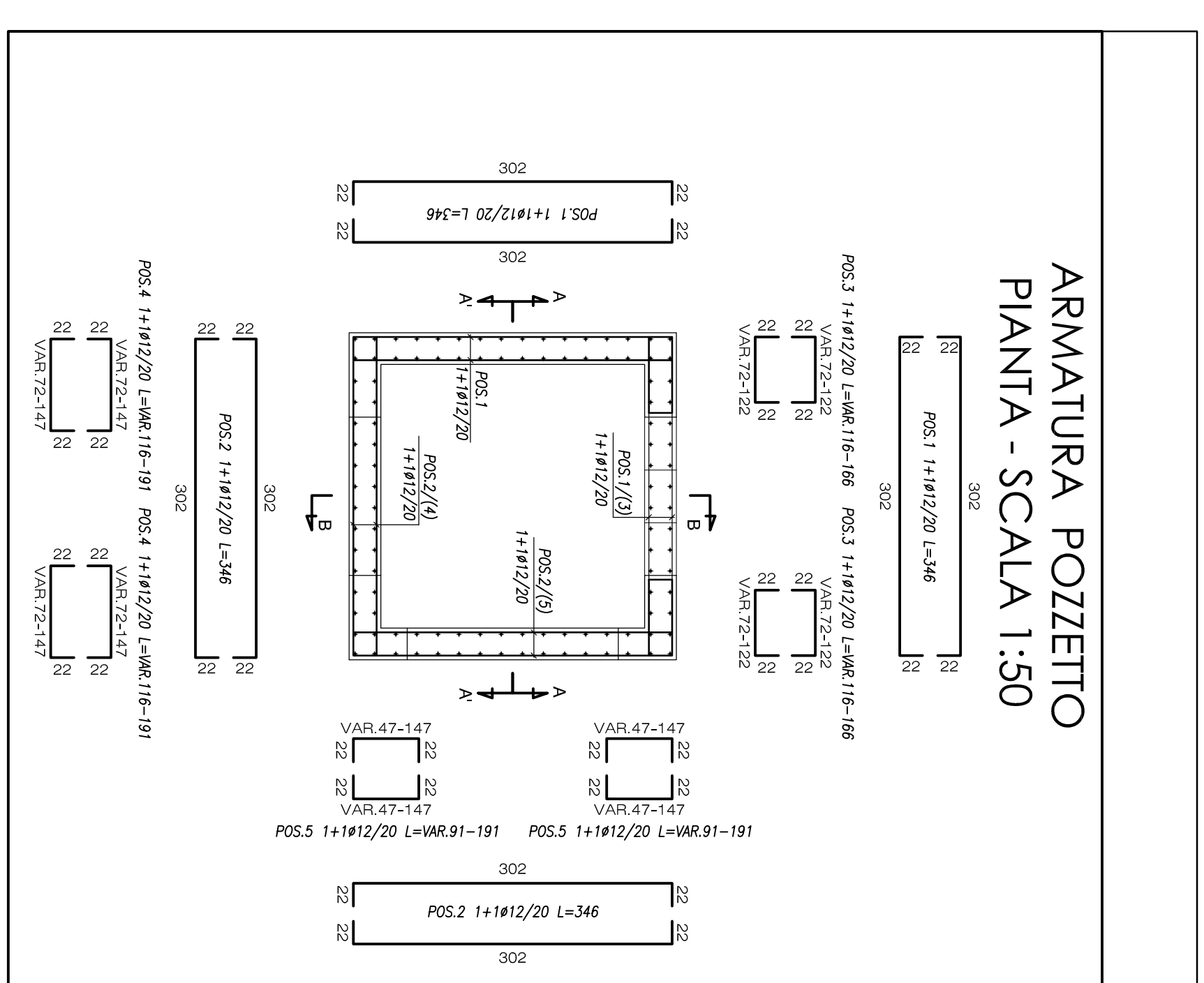
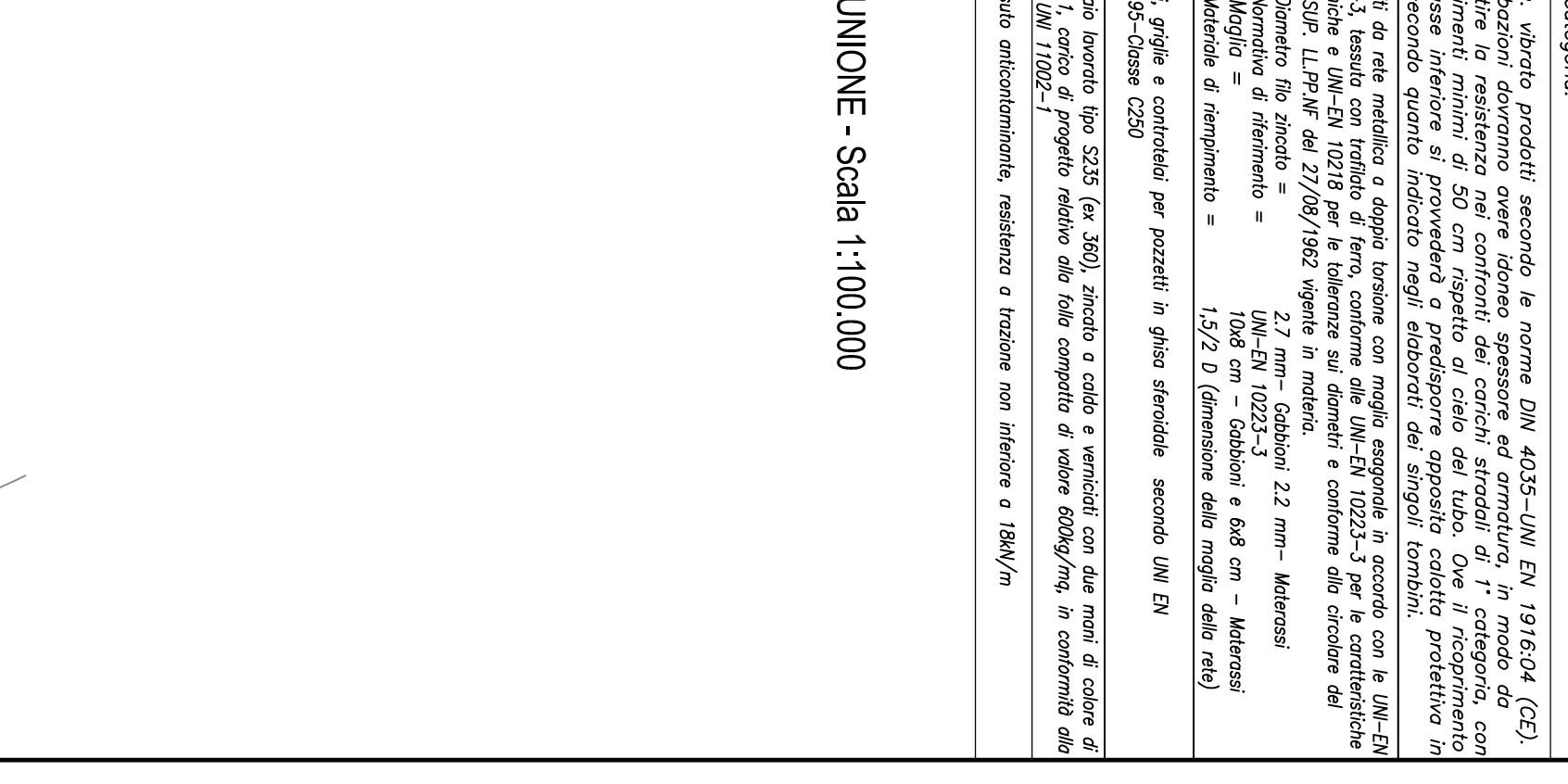
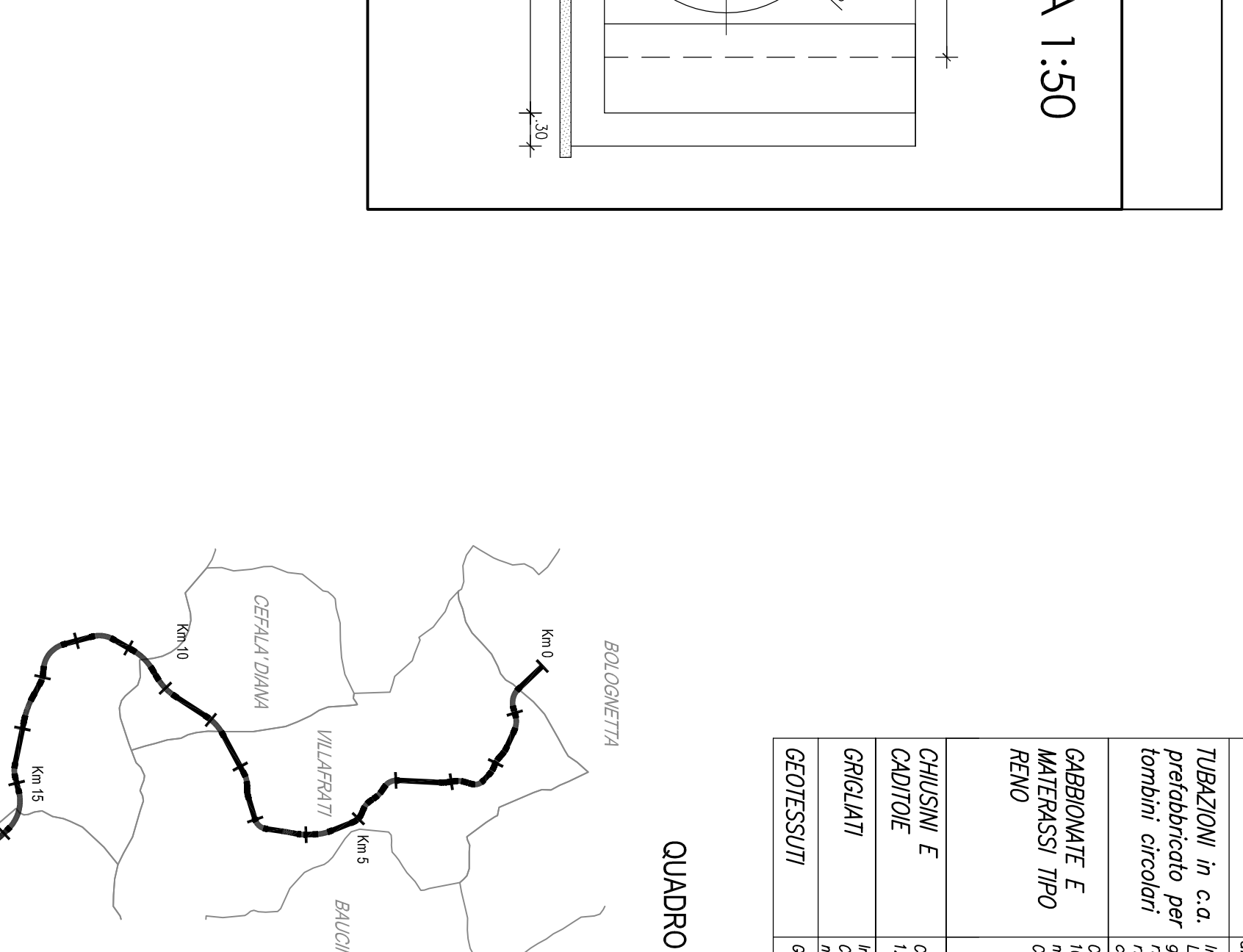
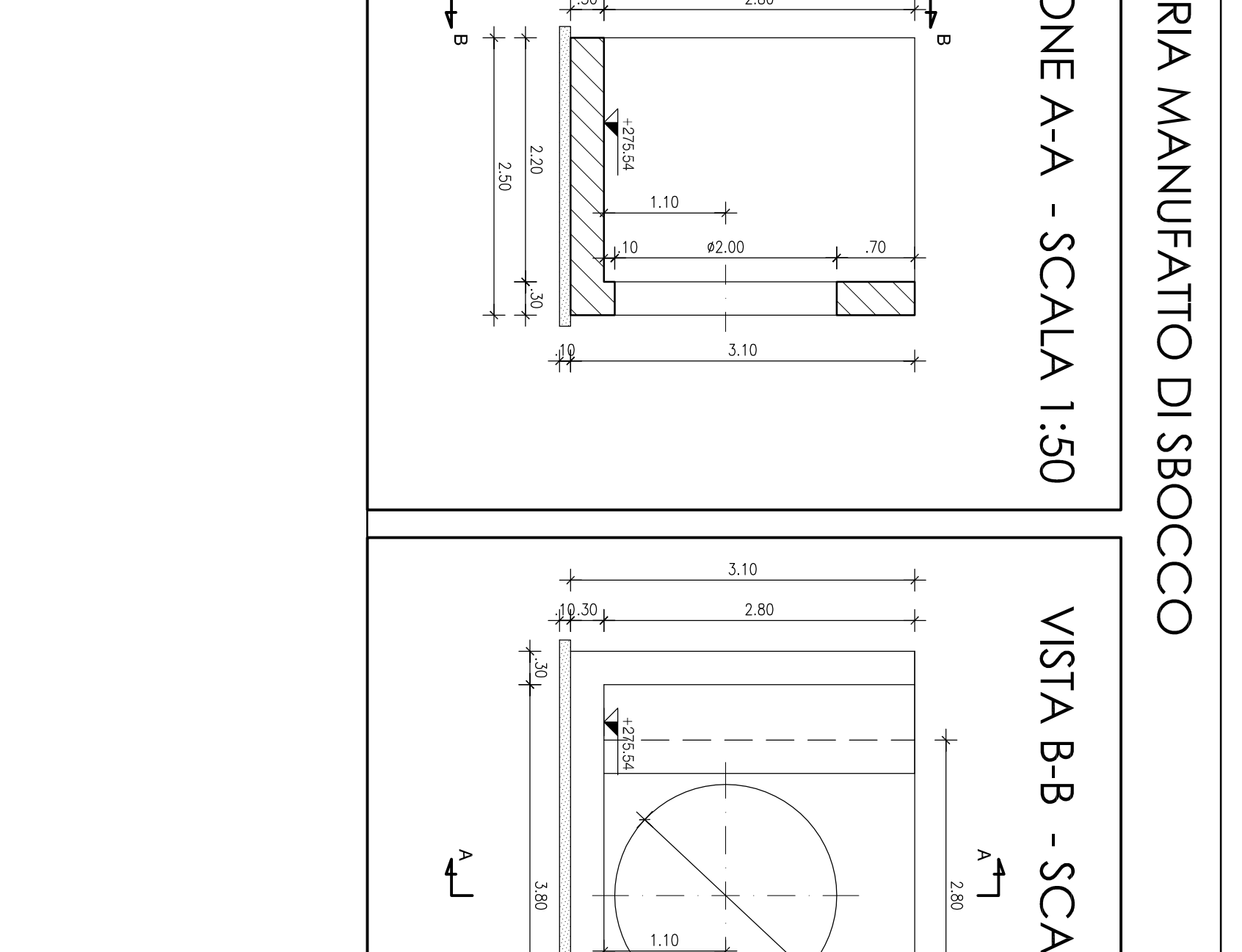
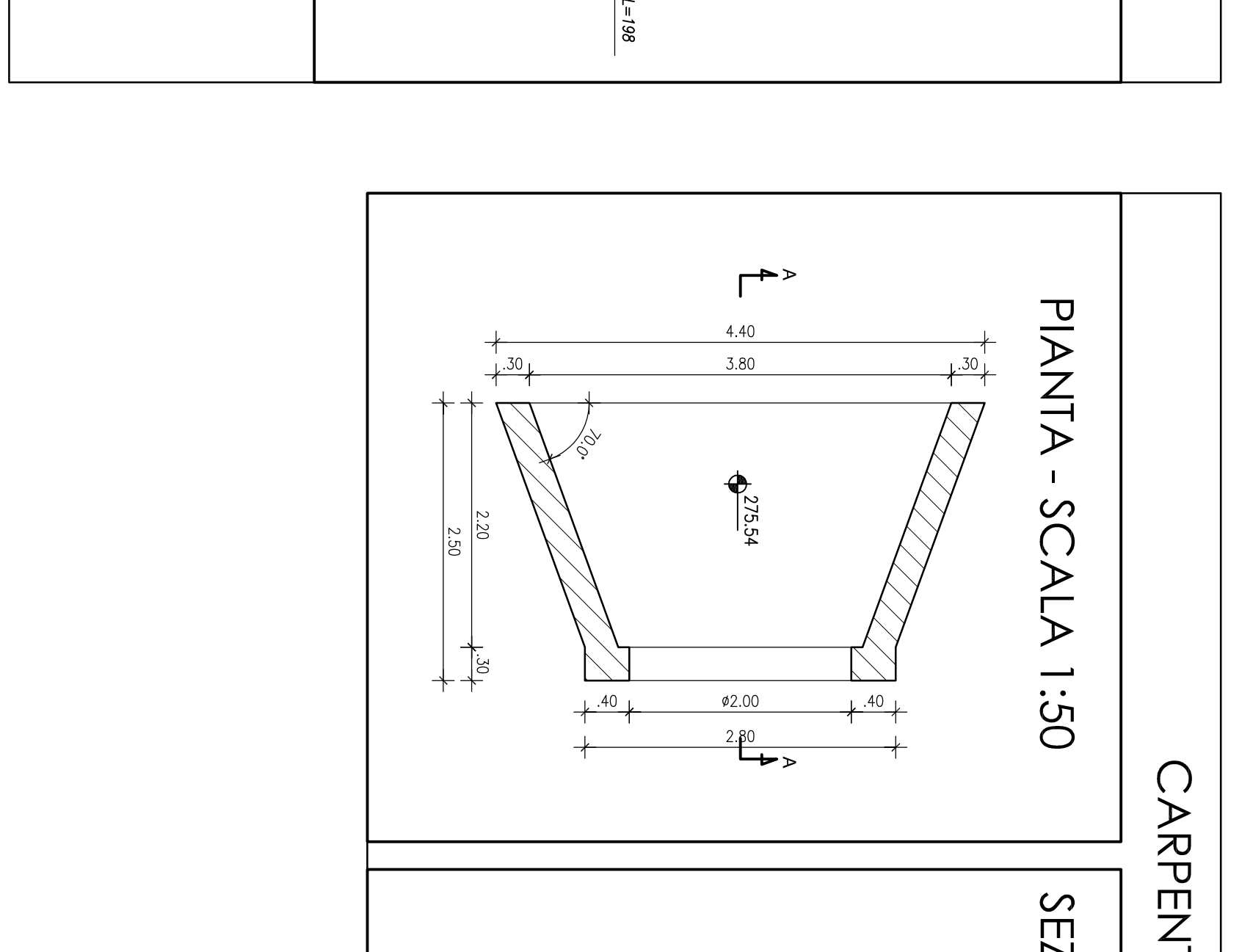
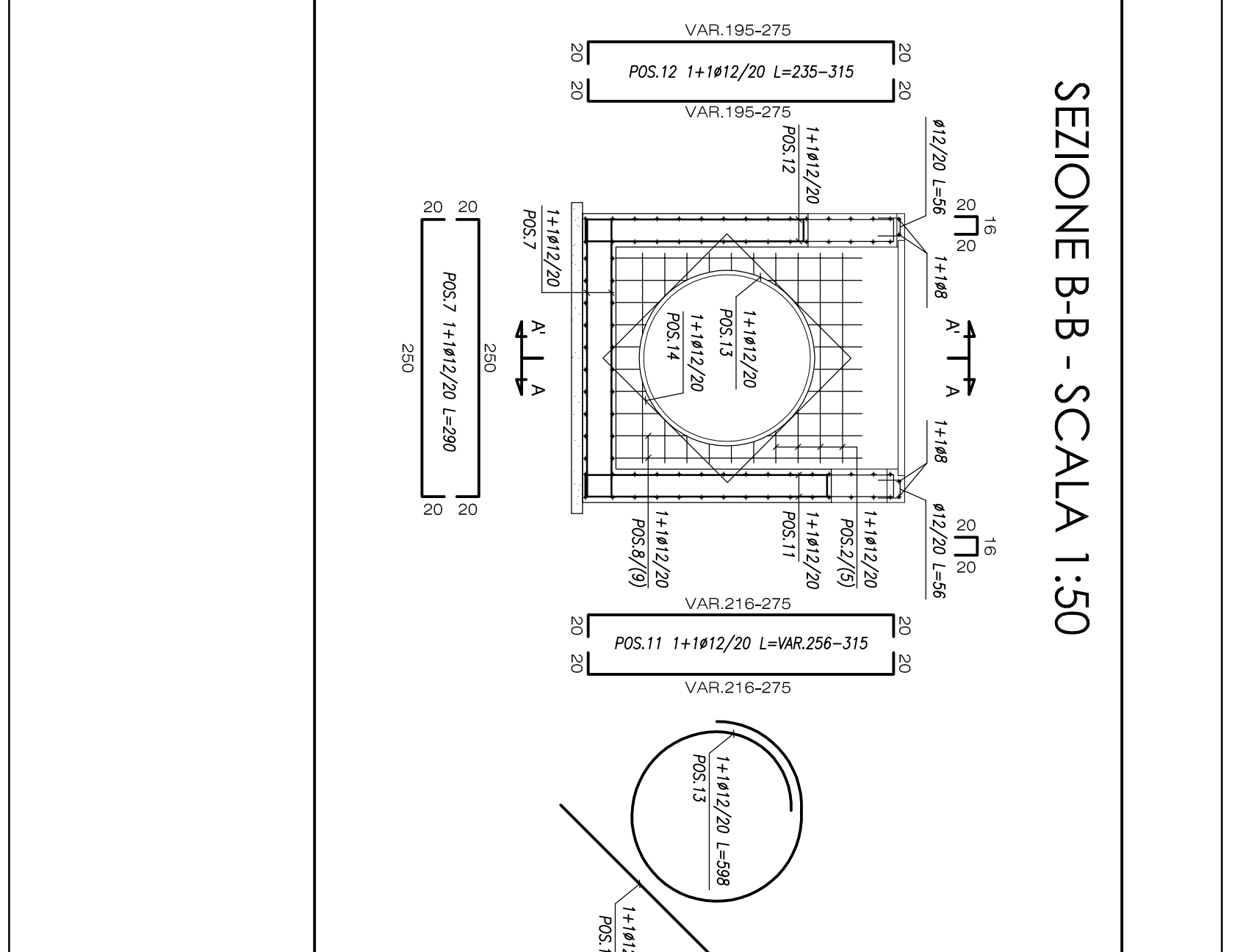
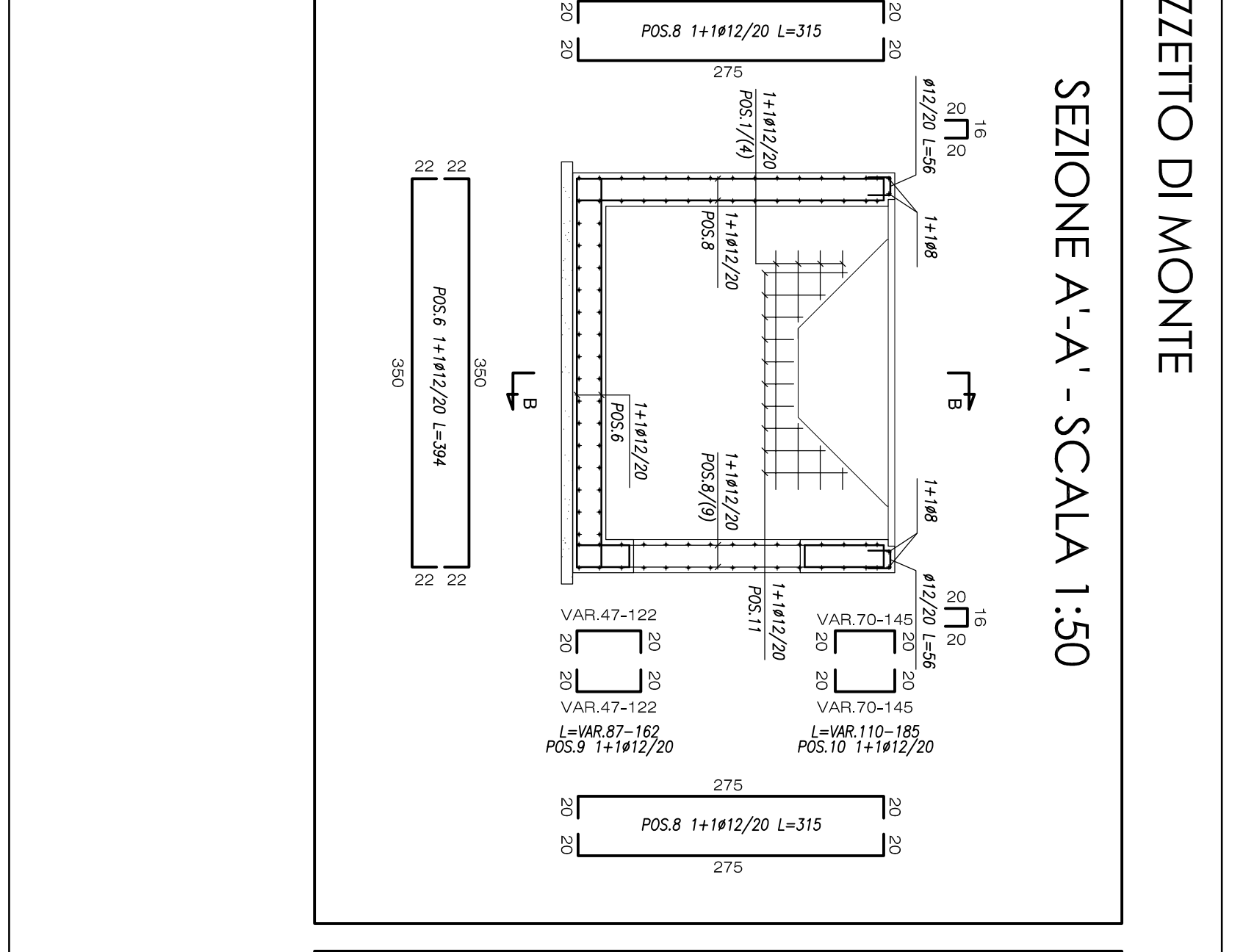
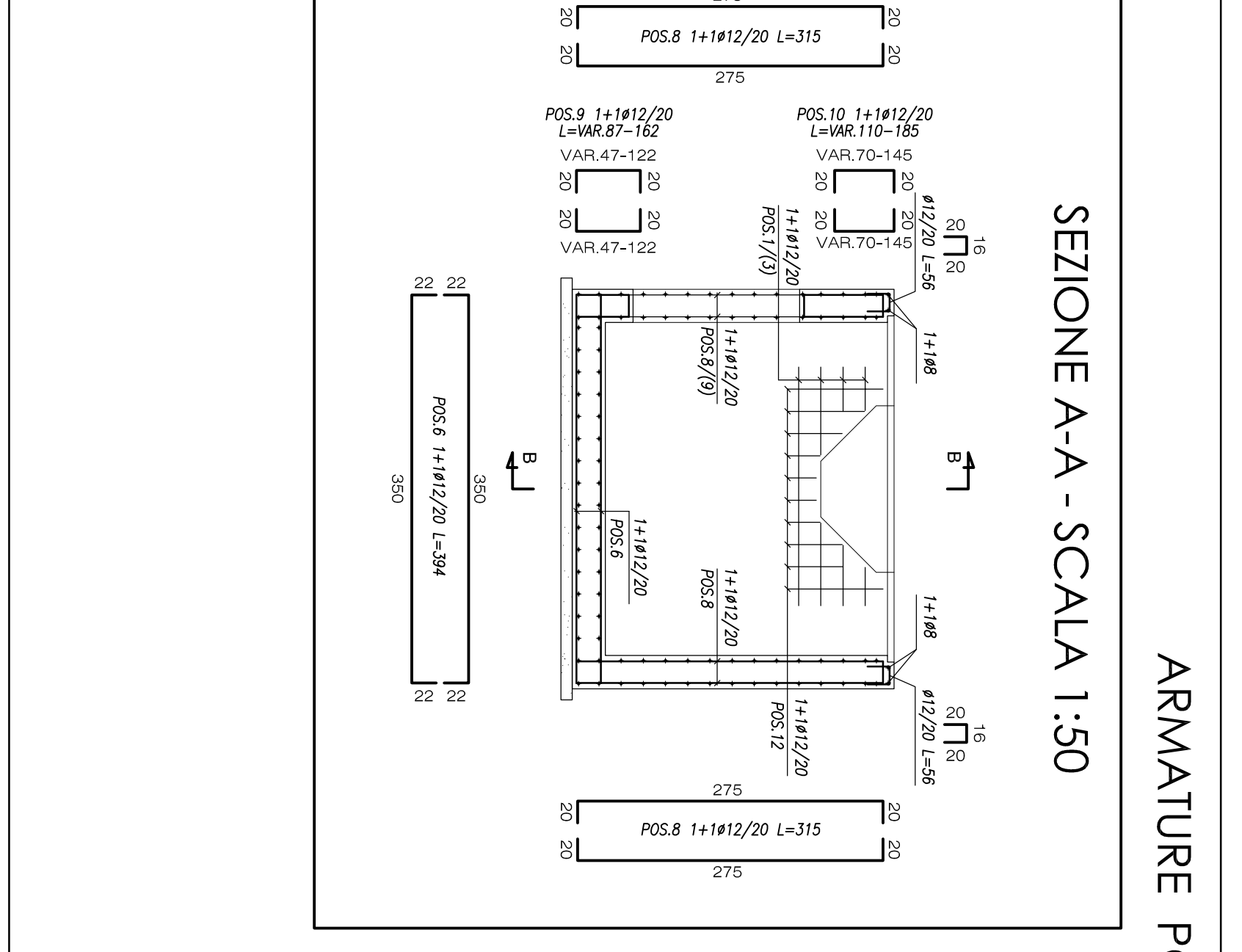
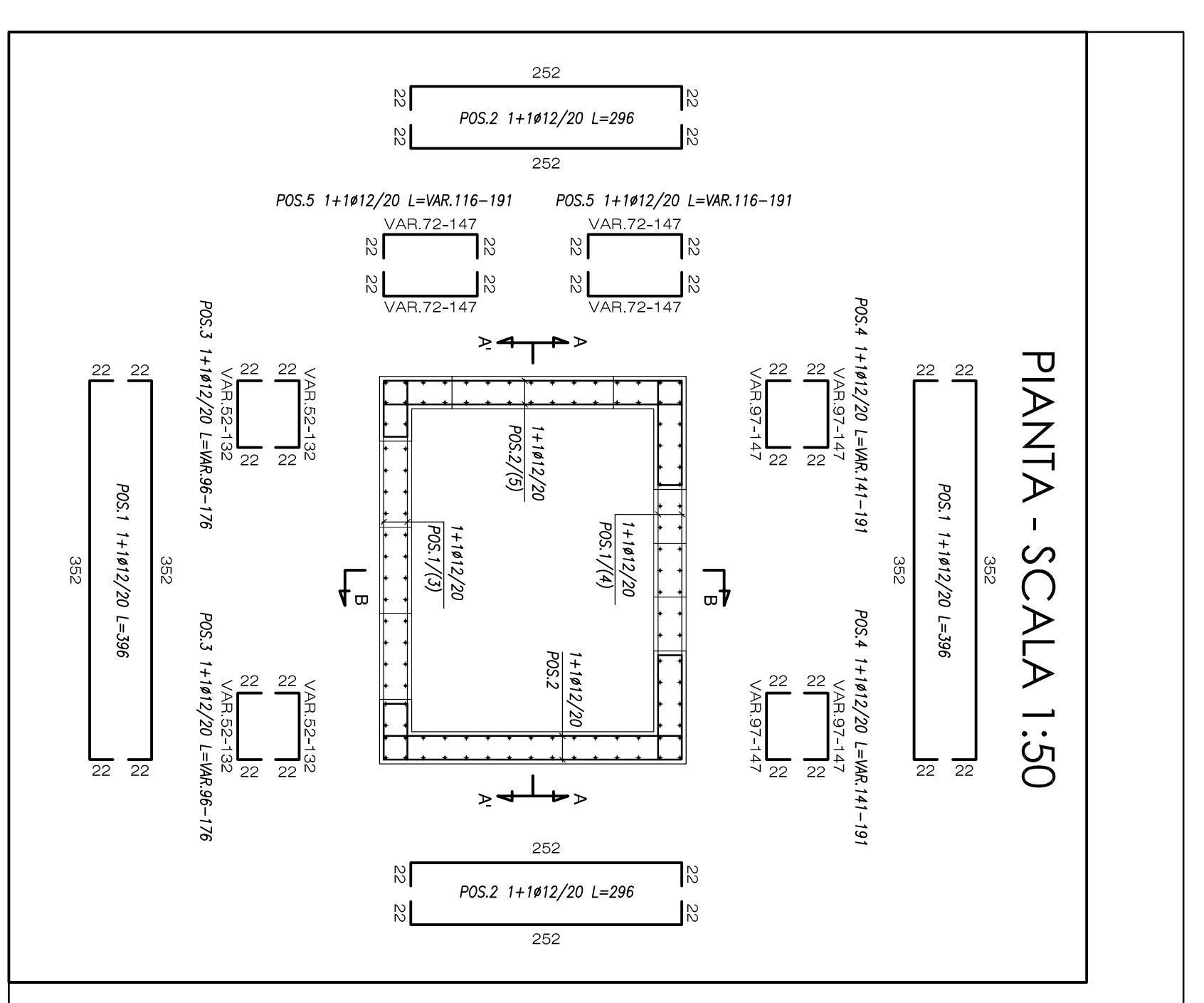
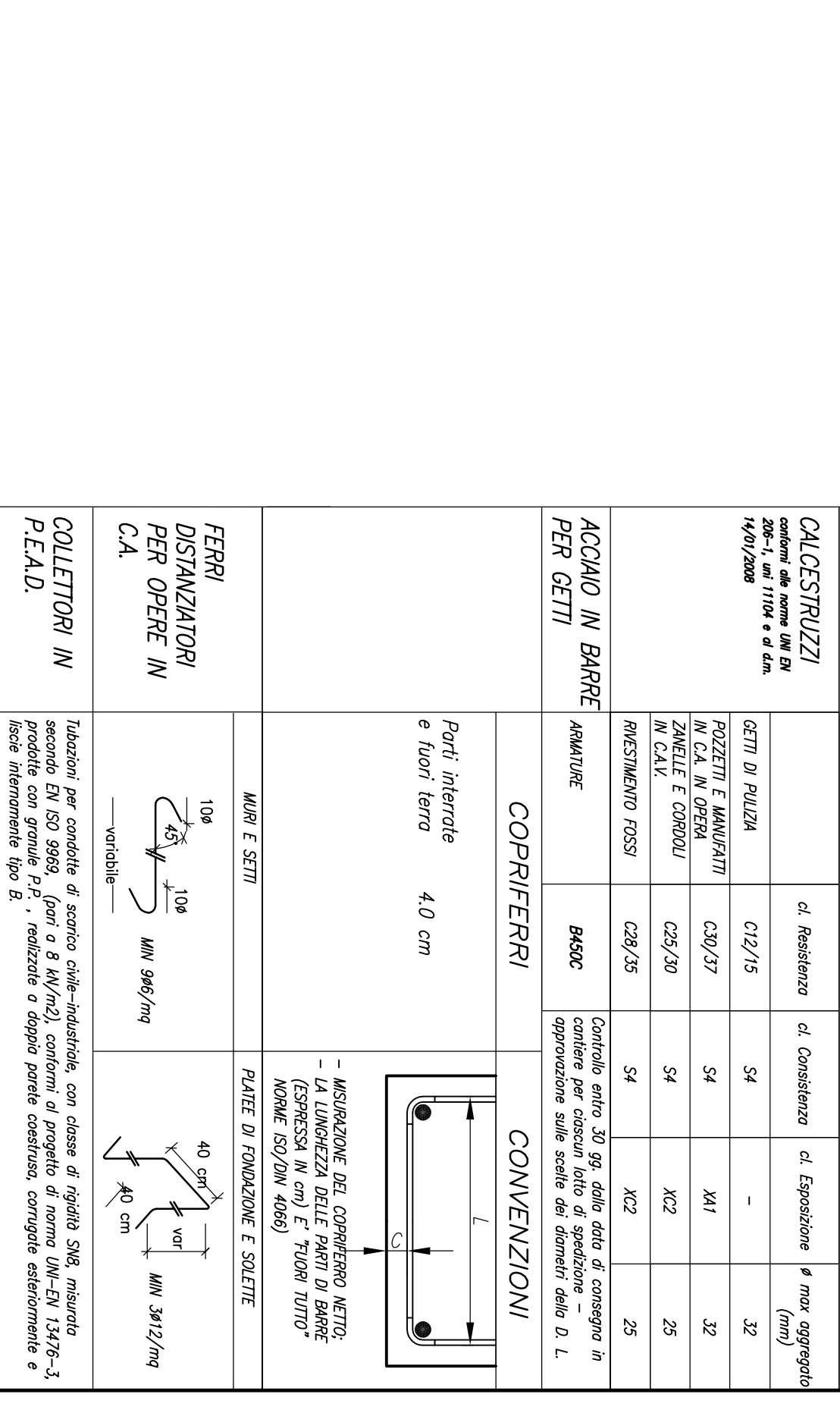


DESCRIZIONE	UNITA'	QUANTITA'	UNITA'	QUANTITA'	UNITA'	QUANTITA'
ACCIAIO IN BARRE	kg	54		32		50
ACCIAIO IN BARRE	kg	54		32		50
ACCIAIO IN BARRE	kg	54		32		50
ACCIAIO IN BARRE	kg	54		32		50
ACCIAIO IN BARRE	kg	54		32		50
ACCIAIO IN BARRE	kg	54		32		50
ACCIAIO IN BARRE	kg	54		32		50
ACCIAIO IN BARRE	kg	54		32		50



ARMATURE POZZETTO INTERMEDIO

ARMATURE POZZETTO DI MONTE

ARMATURE MANUFATTO DI SBOCO

ARMATURE POZZETTO

ARMATURE MANUFATTO DI SBOCO

ARMATURE POZZETTO

ARMATURE MANUFATTO DI SBOCO

ARMATURE POZZETTO

ARMATURE MANUFATTO DI SBOCO

ARMATURE POZZETTO

ARMATURE MANUFATTO DI SBOCO

ARMATURE POZZETTO

ARMATURE MANUFATTO DI SBOCO

ARMATURE POZZETTO

ARMATURE MANUFATTO DI SBOCO

ARMATURE POZZETTO

ARMATURE MANUFATTO DI SBOCO

ARMATURE POZZETTO

ARMATURE MANUFATTO DI SBOCO

ARMATURE POZZETTO

ARMATURE MANUFATTO DI SBOCO

ARMATURE POZZETTO

ARMATURE MANUFATTO DI SBOCO

ARMATURE POZZETTO

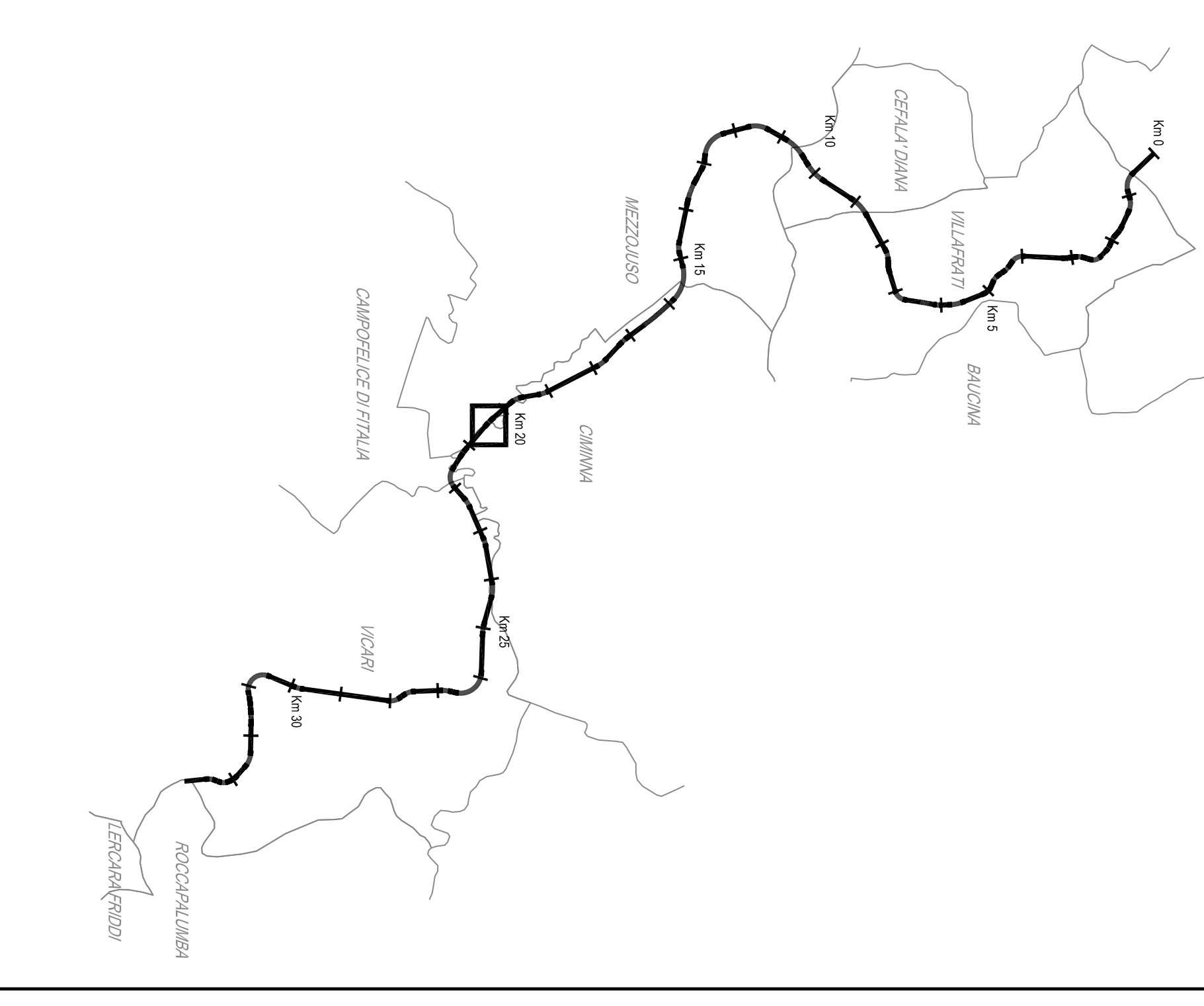
ARMATURE MANUFATTO DI SBOCO

ARMATURE POZZETTO

ARMATURE MANUFATTO DI SBOCO

QUADRO DI UNIONE - Scala 1:100.000

DESCRIZIONE	UNITA'	QUANTITA'
ACCIAIO IN BARRE	kg	54
ACCIAIO IN BARRE	kg	54
ACCIAIO IN BARRE	kg	54
ACCIAIO IN BARRE	kg	54
ACCIAIO IN BARRE	kg	54
ACCIAIO IN BARRE	kg	54
ACCIAIO IN BARRE	kg	54
ACCIAIO IN BARRE	kg	54
ACCIAIO IN BARRE	kg	54



<b>ANAS S.p.A.</b> Direzione Regionale Emilia-Romagna Ufficio Tecnico di Bologna		Codice Unico Progetto (CUP): <b>F41B0300230001</b>	Foglio: <b>01</b>
Codice elaborato: <b>PA1708 PE</b> Foglio: <b>P44</b>		Foglio: <b>NO02</b>	Foglio: <b>5</b>
Foglio: <b>01</b> / <b>Z</b> / <b>FE</b> / <b>PA1708 PE</b> / <b>NO02</b>		Foglio: <b>4</b> / <b>1</b> / <b>3</b> / <b>7</b>	Foglio: <b>VAR</b>
Foglio: <b>01</b> / <b>Z</b> / <b>FE</b> / <b>PA1708 PE</b> / <b>NO02</b>		Foglio: <b>4</b> / <b>1</b> / <b>3</b> / <b>7</b>	Foglio: <b>VAR</b>

**MODIFICA TECNICA N. 89**  
**OPERE D'ARTE - TOMBINI IDRAULICI - ASSE PRINCIPALE**  
 Tomblino TP44 - Nuova realizzazione  
 Tav. 2 - Carpentiere e armature

- PERIZIA DI VARIANTE N. 1 -  
**Biolgietta S.p.A.**

\*) - Per i particolari si veda l'elaborato tipologico PE1PN001\_31\_4137 "particolari costruttivi"