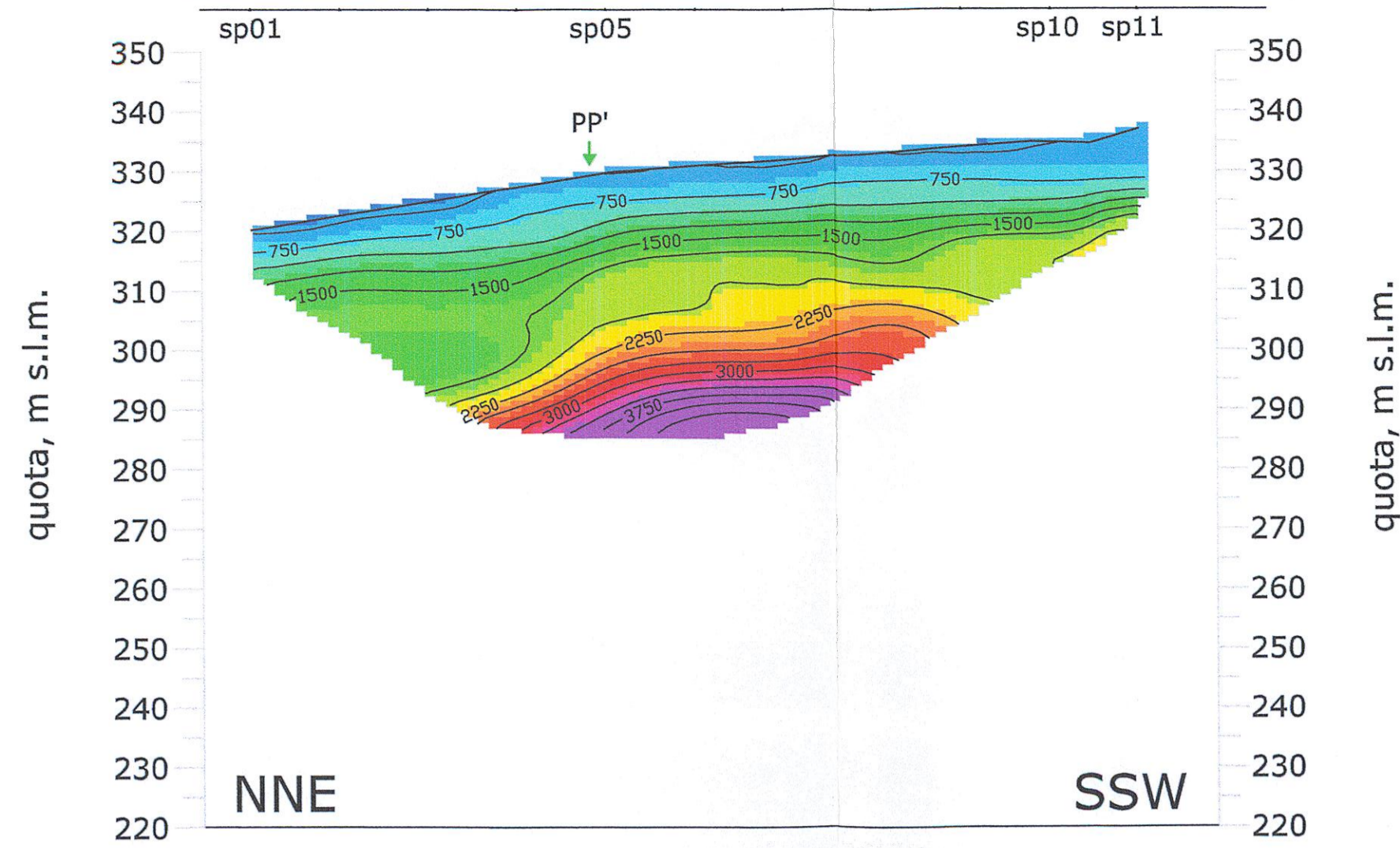
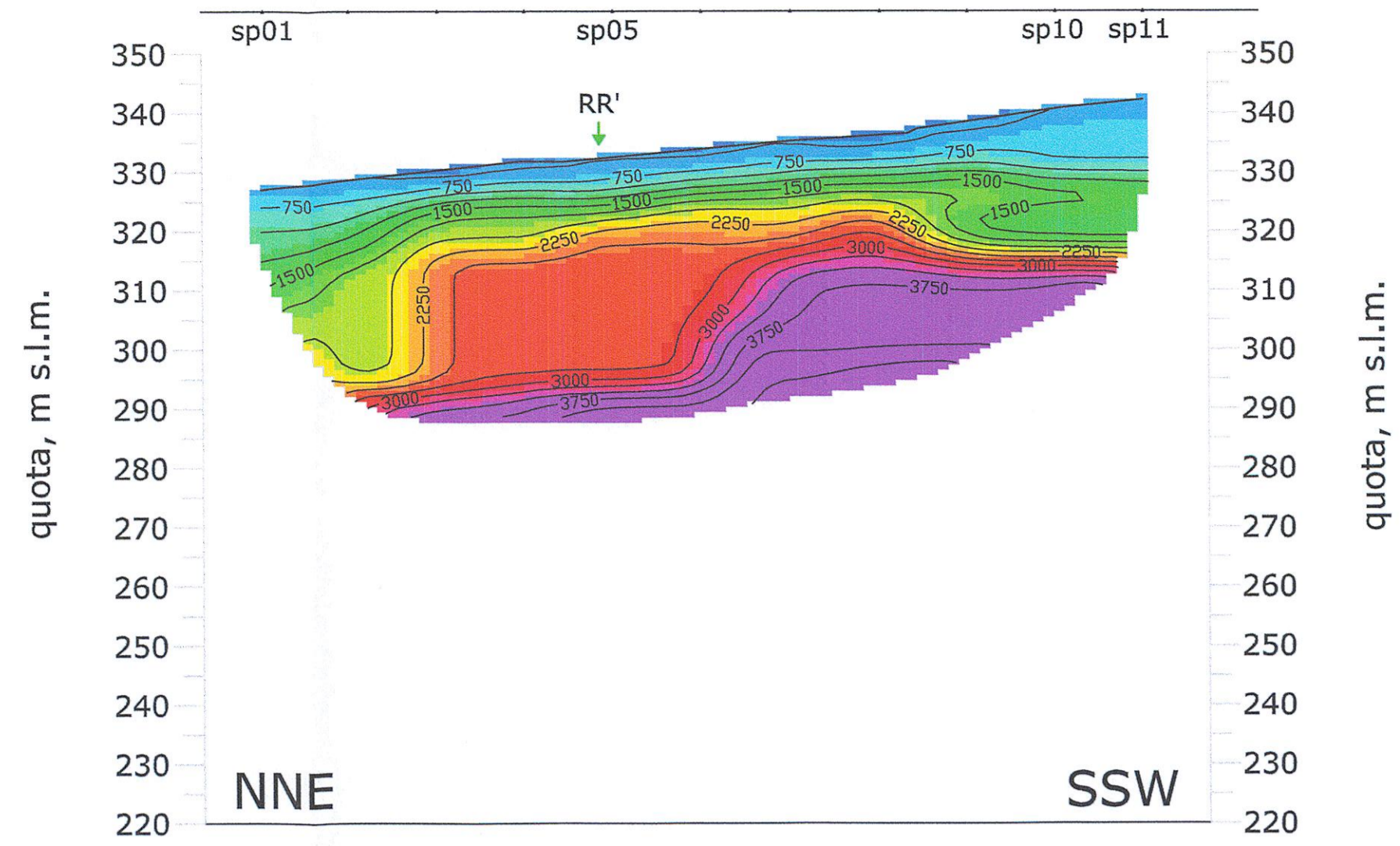


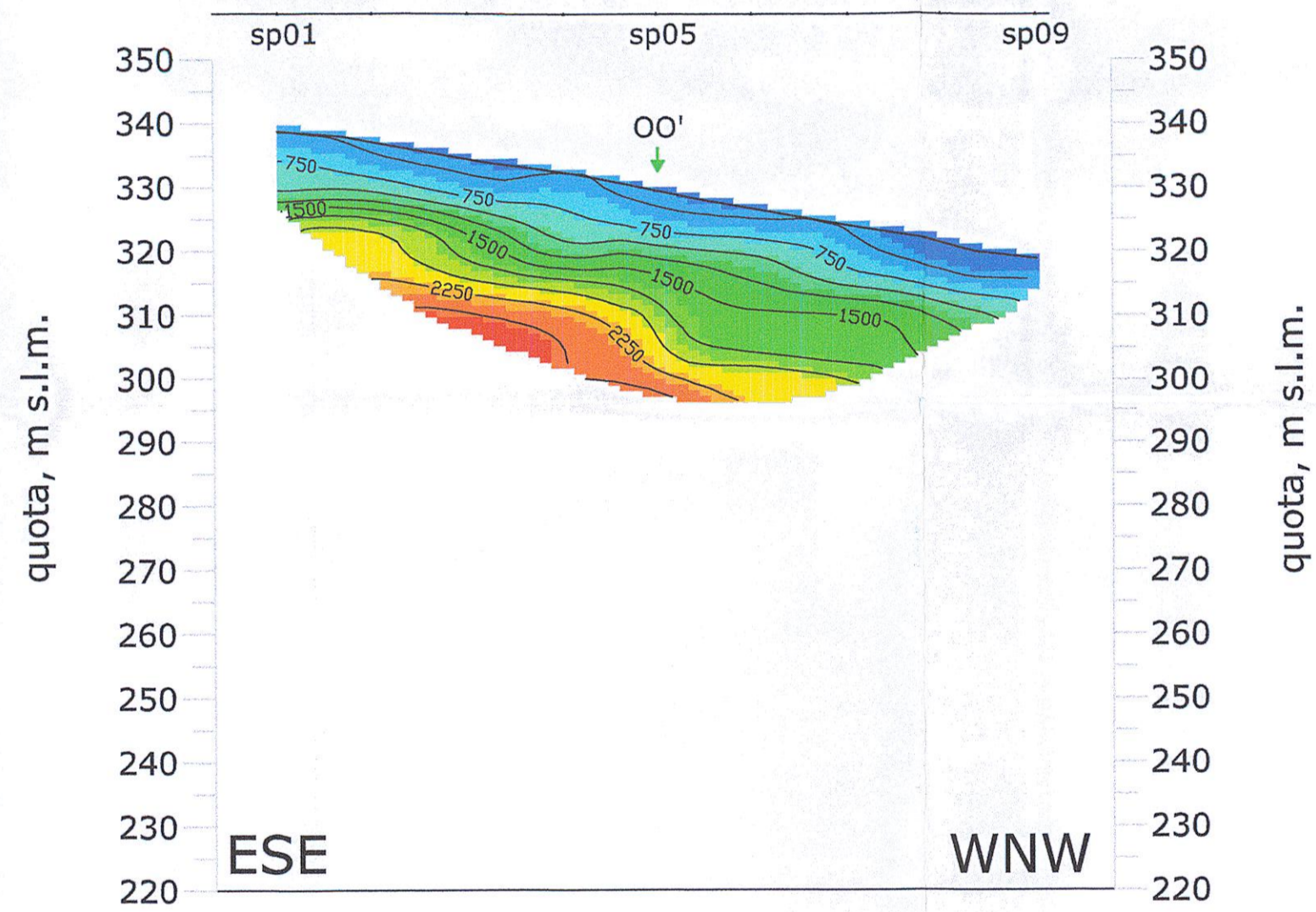
LINEA SISMICA O-O'



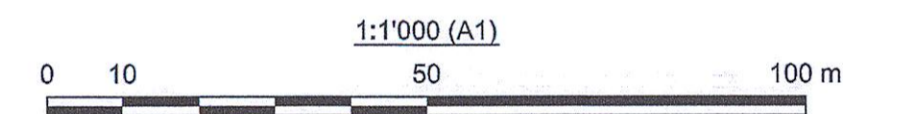
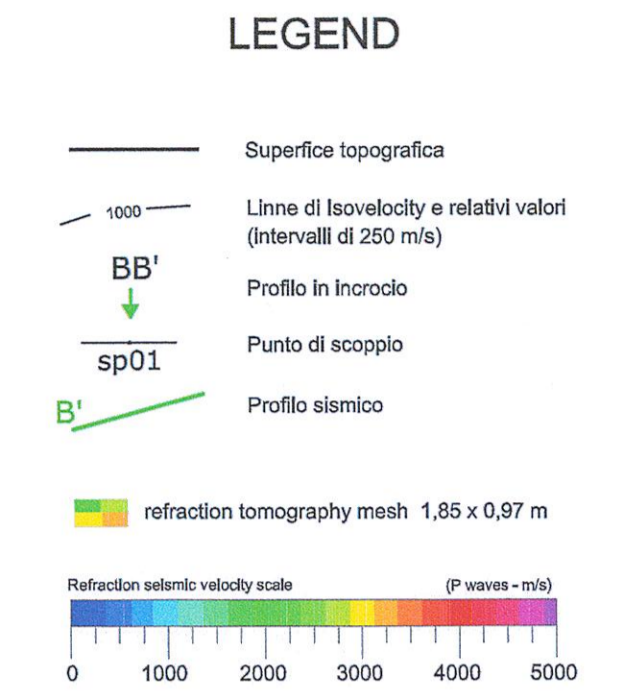
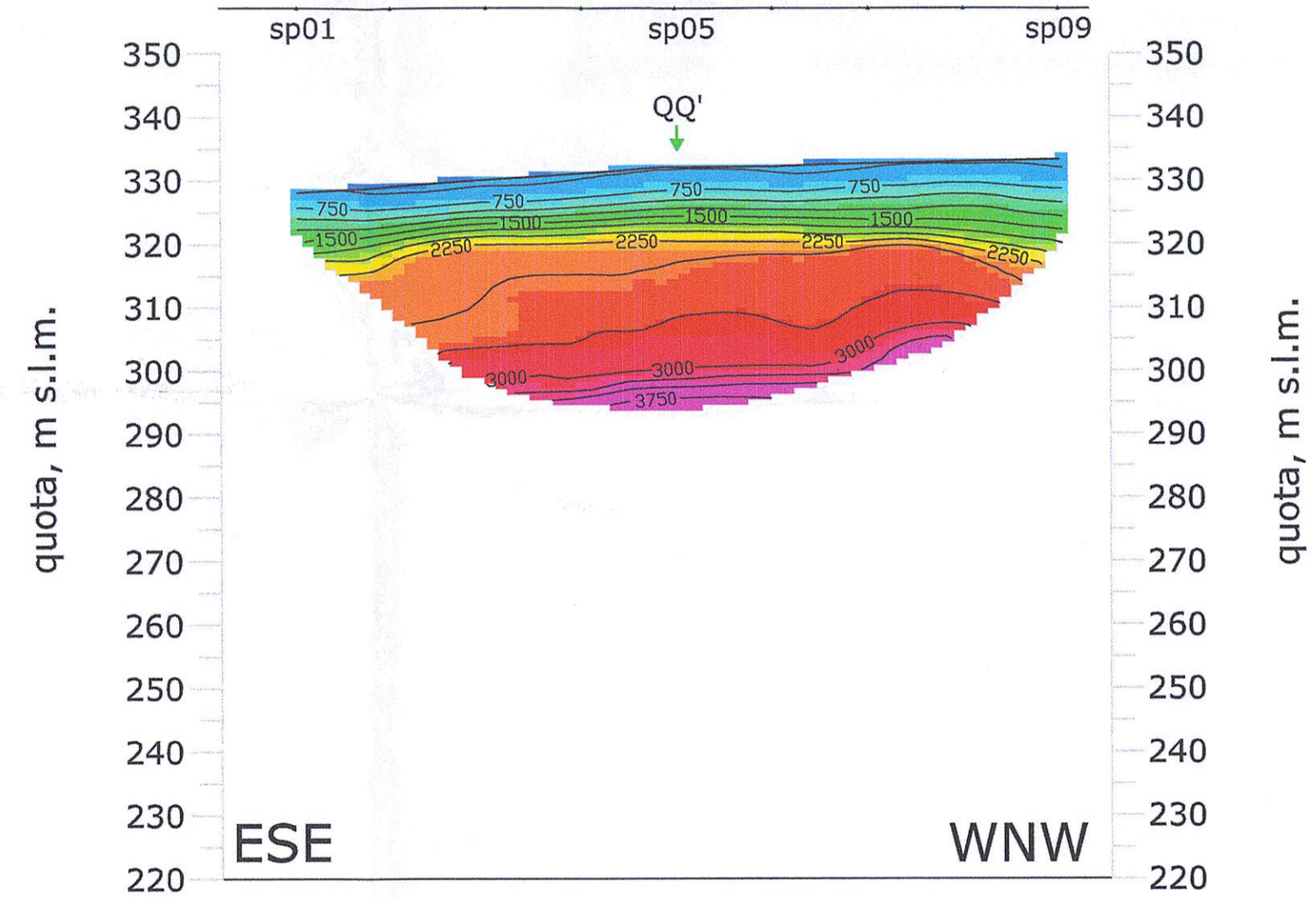
LINEA SISMICA Q-Q'



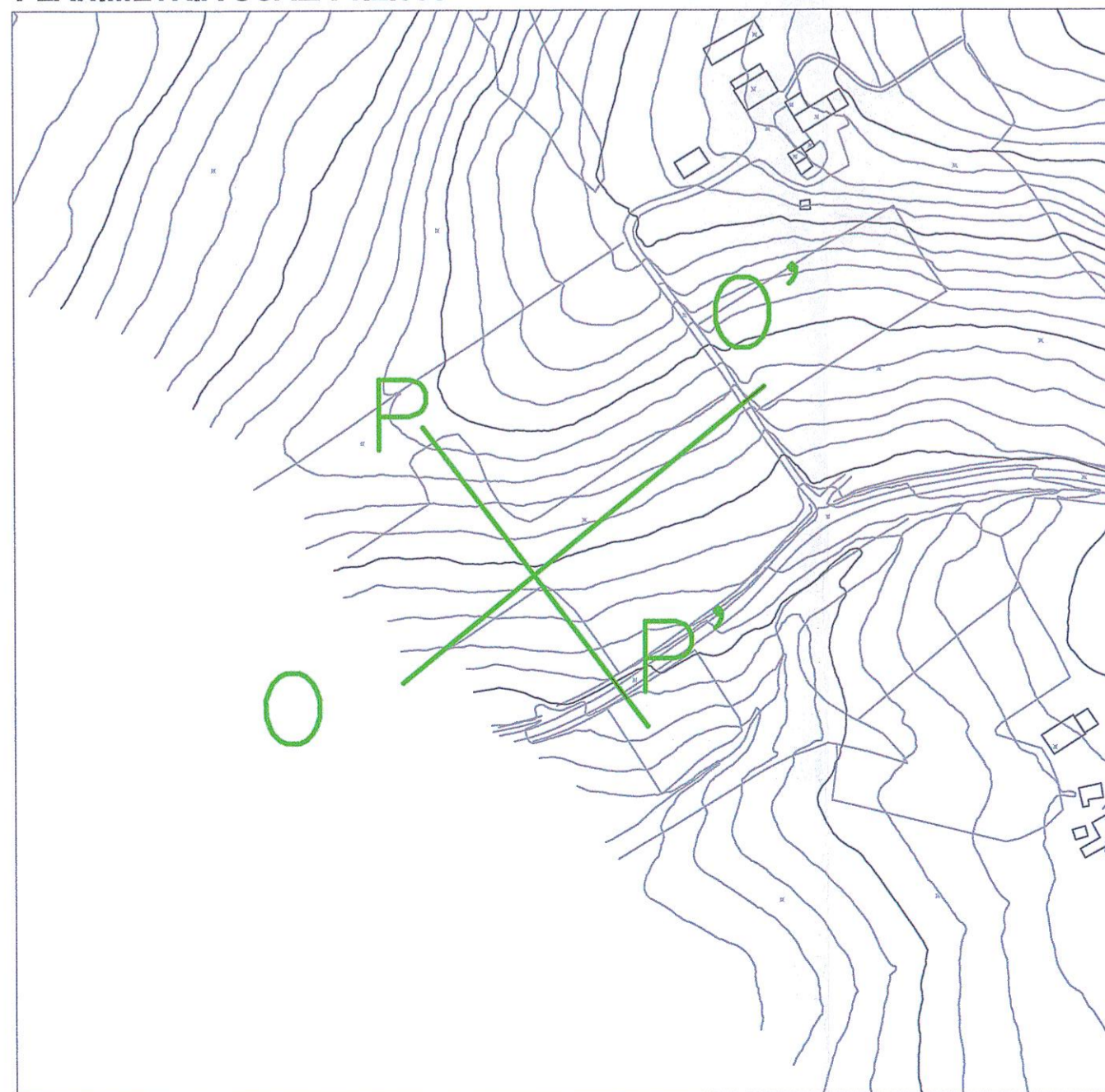
LINEA SISMICA P-P'



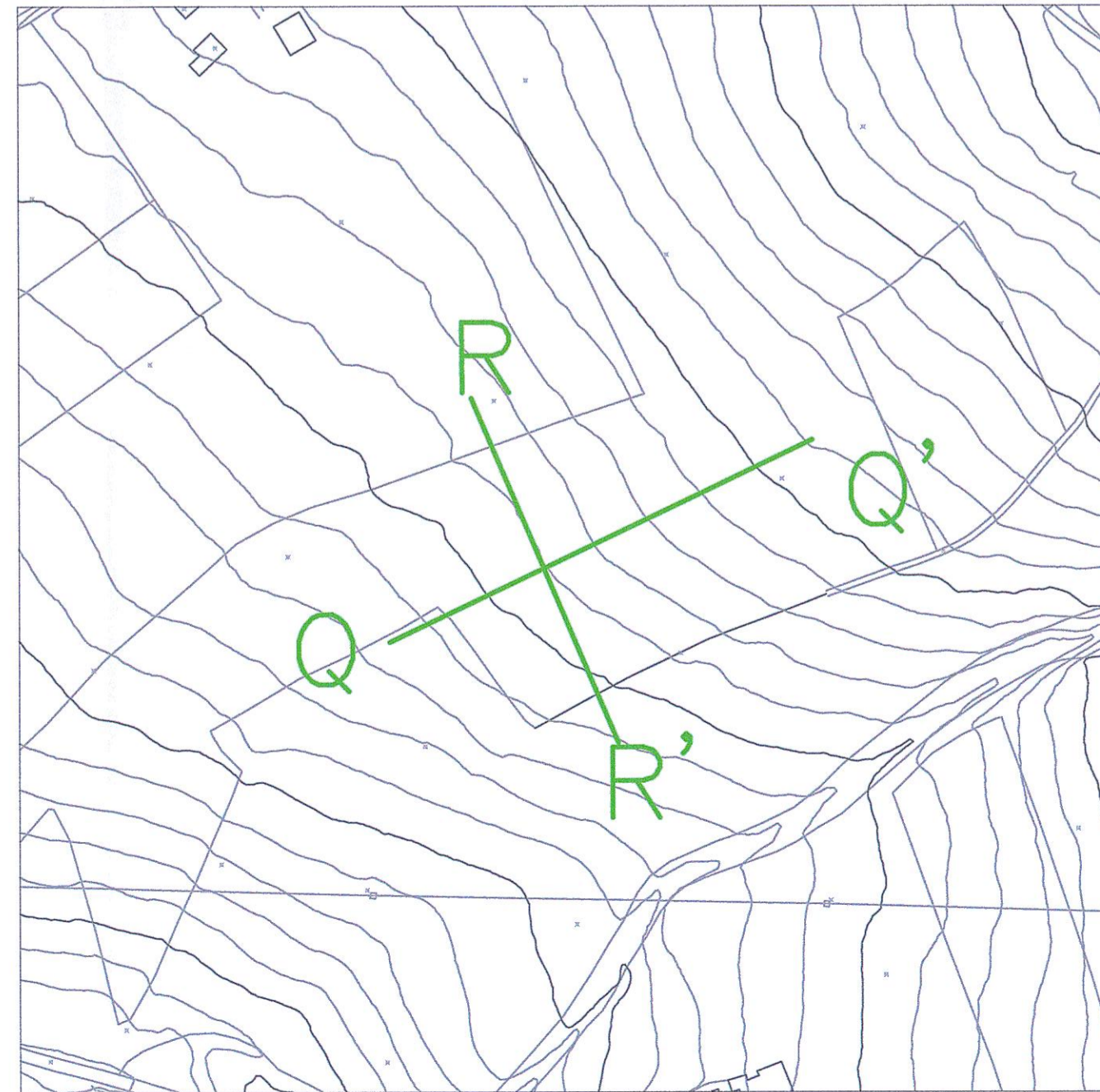
LINEA SISMICA R-R'



PLANIMETRIA SCALA 1:2.000



PLANIMETRIA SCALA 1:2.000



COMMITTENTE:



PROGETTAZIONE:



DIREZIONE TECNICA
U.O. GEOLOGIA, GESTIONE TERRE E BONIFICHE

PROGETTO DEFINITIVO

ITINERARIO NAPOLI - BARI
RADDOPPIO TRATTA APICE - ORSARA
I LOTTO FUNZIONALE APICE - HIRPINIA

PROFILI SISMICI A RIFRAZIONE
OO'-PP' E QQ'-RR'

SCALA :
1:1.000

COMMESSA LOTTO FASE ENTE TIPO DOC. OPERA/DISCIPLINA Progr. REV.

IFOF 00 D 69 IG GE0005 007 A

Revis.	Descrizione	Redatto	Data	Verificato	Data	Approvato	Data	Autorizzato Data
A	EMISSIONE DEFINITIVA	VICENZETTO	APRILE 2017	S. GIULIANO	APRILE 2017	D. ABBIA	APRILE 2017	F. MARCHESE APRILE 2017