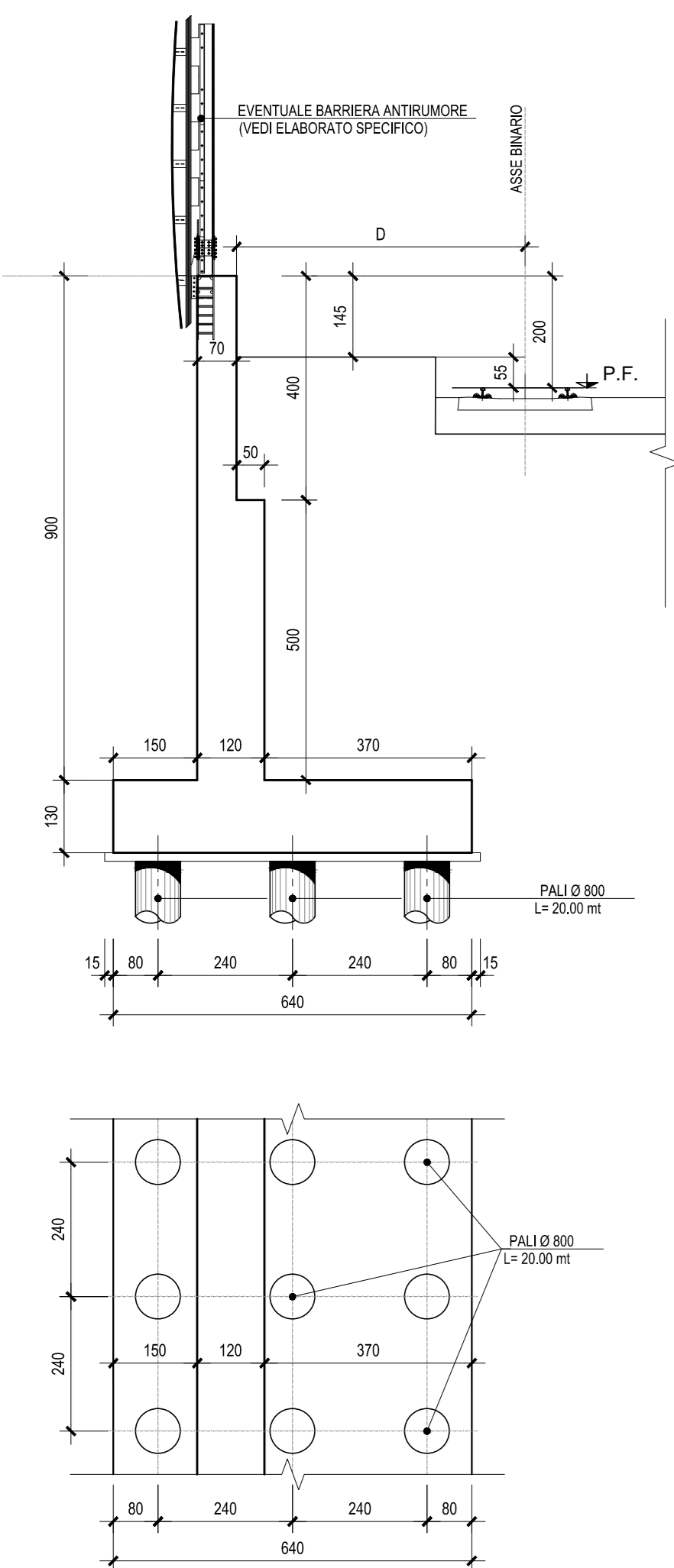
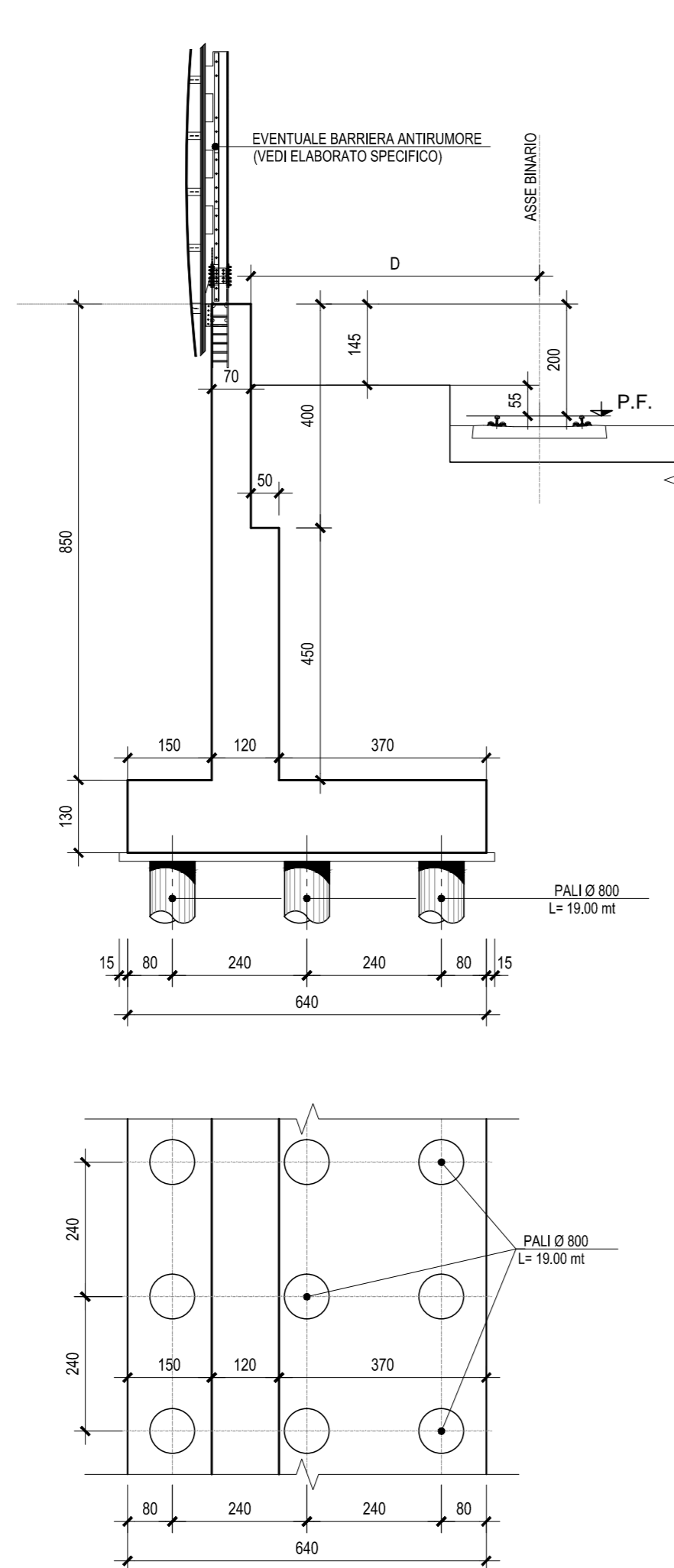


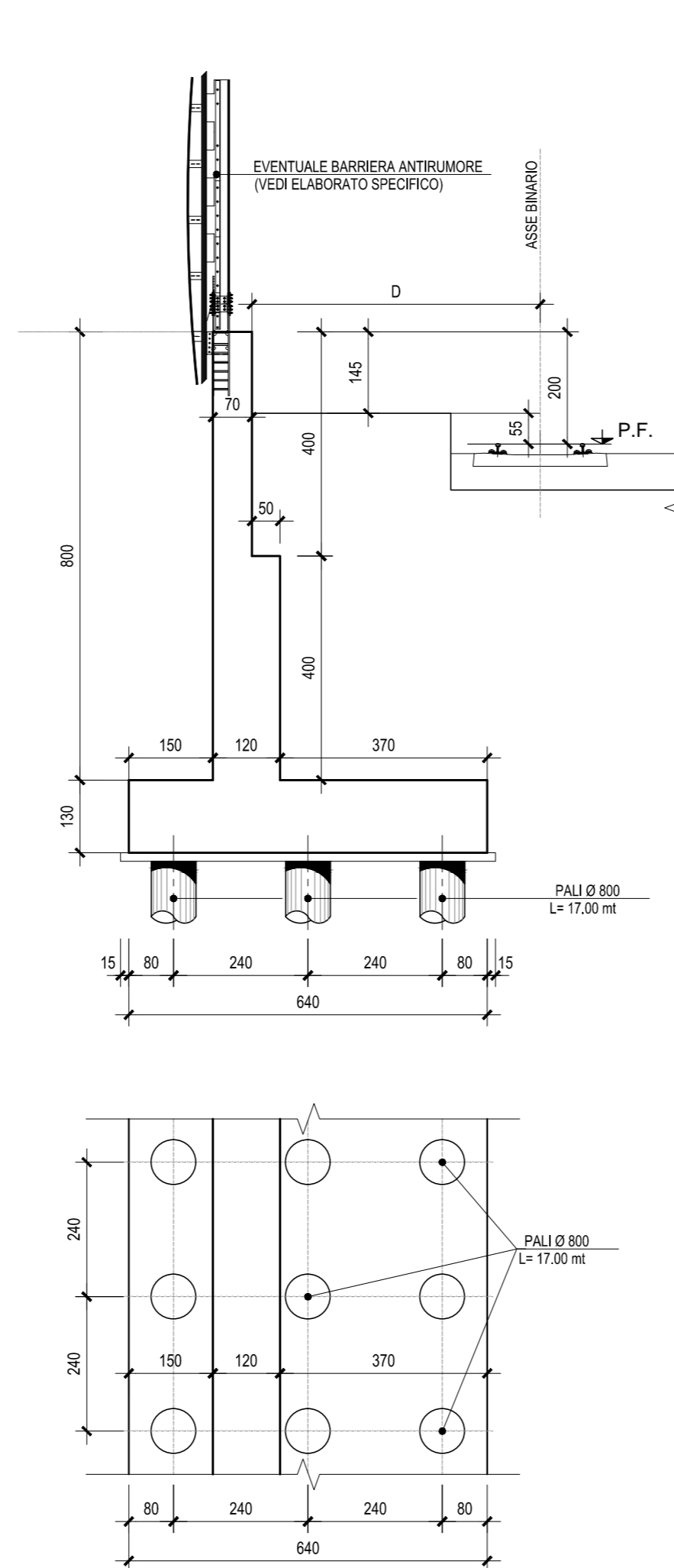
MURO TIPO BA 9.00



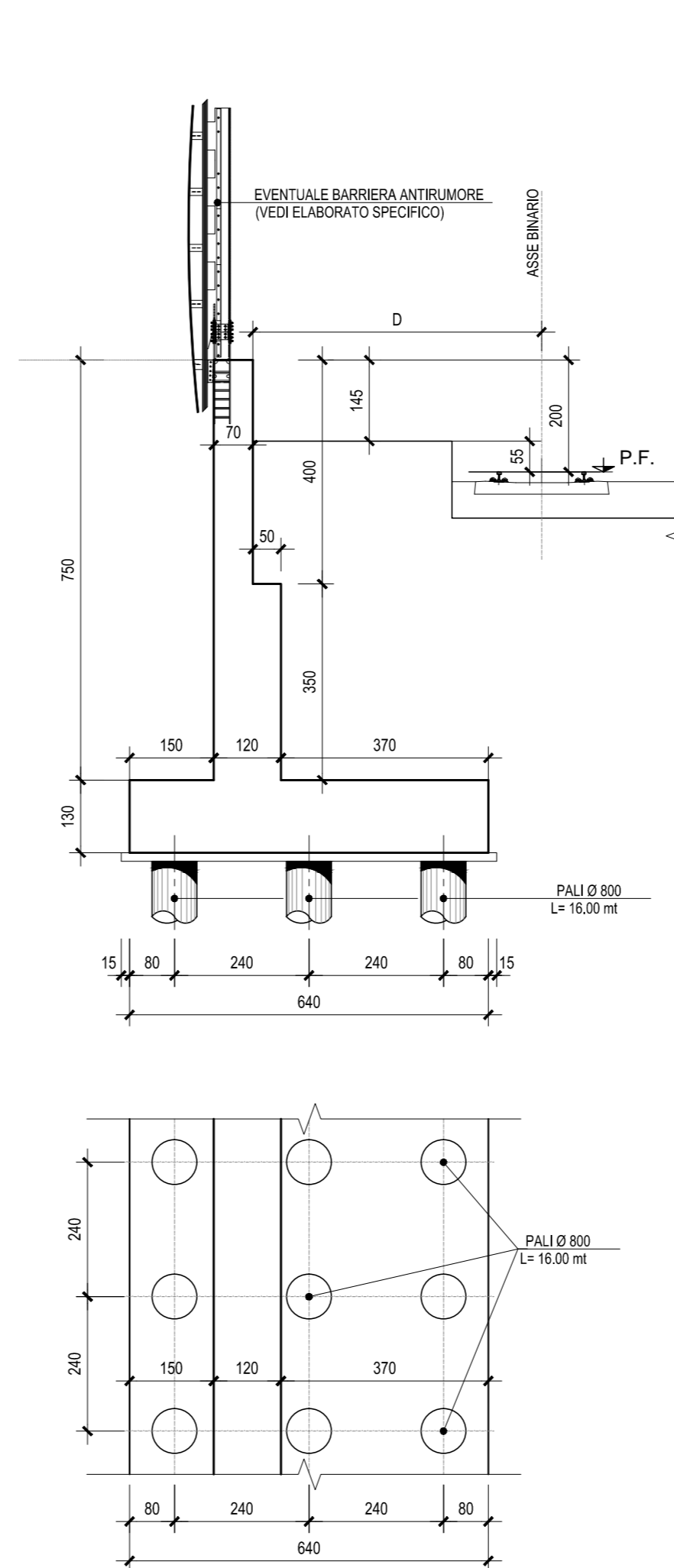
MURO TIPO BA 8.50



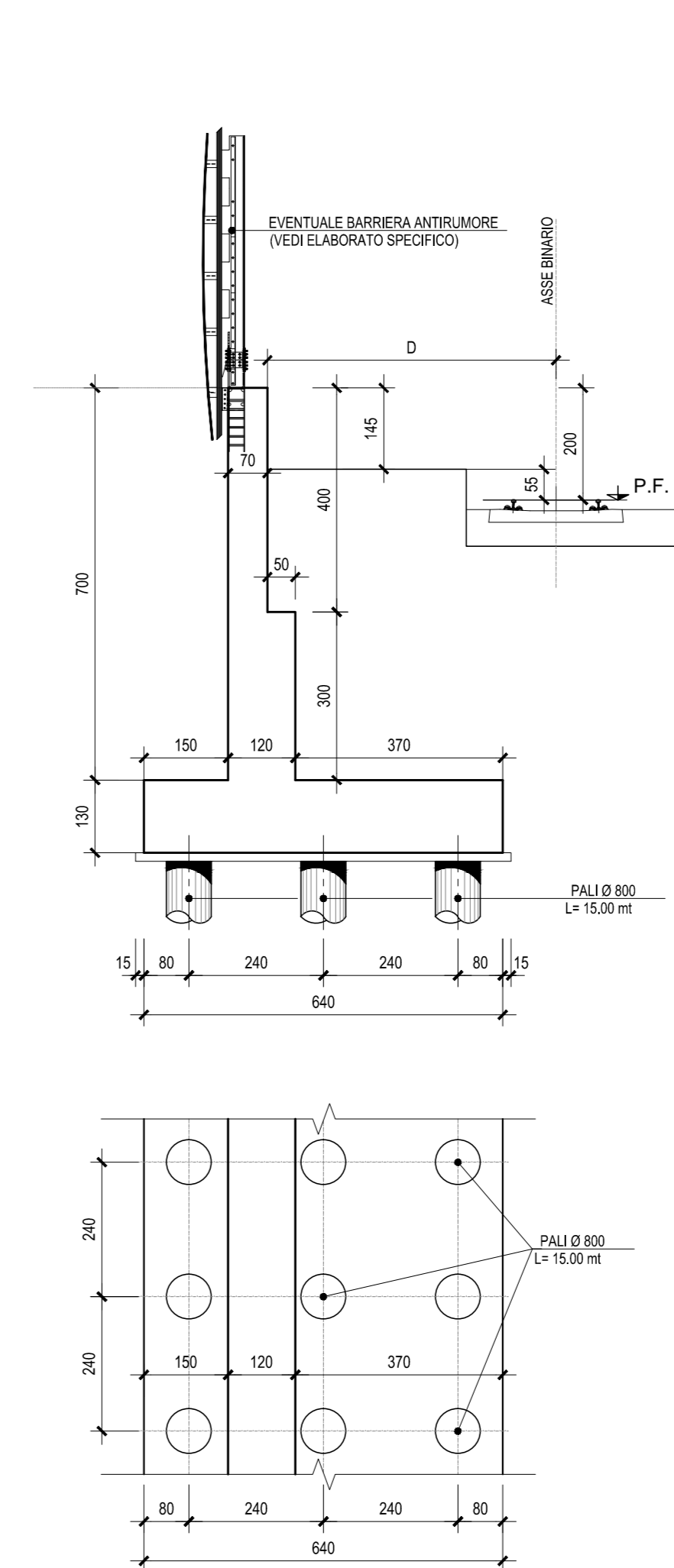
MURO TIPO BA 8.00



MURO TIPO BA 7.50

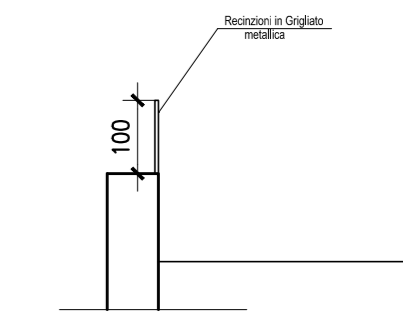


MURO TIPO BA 7.00

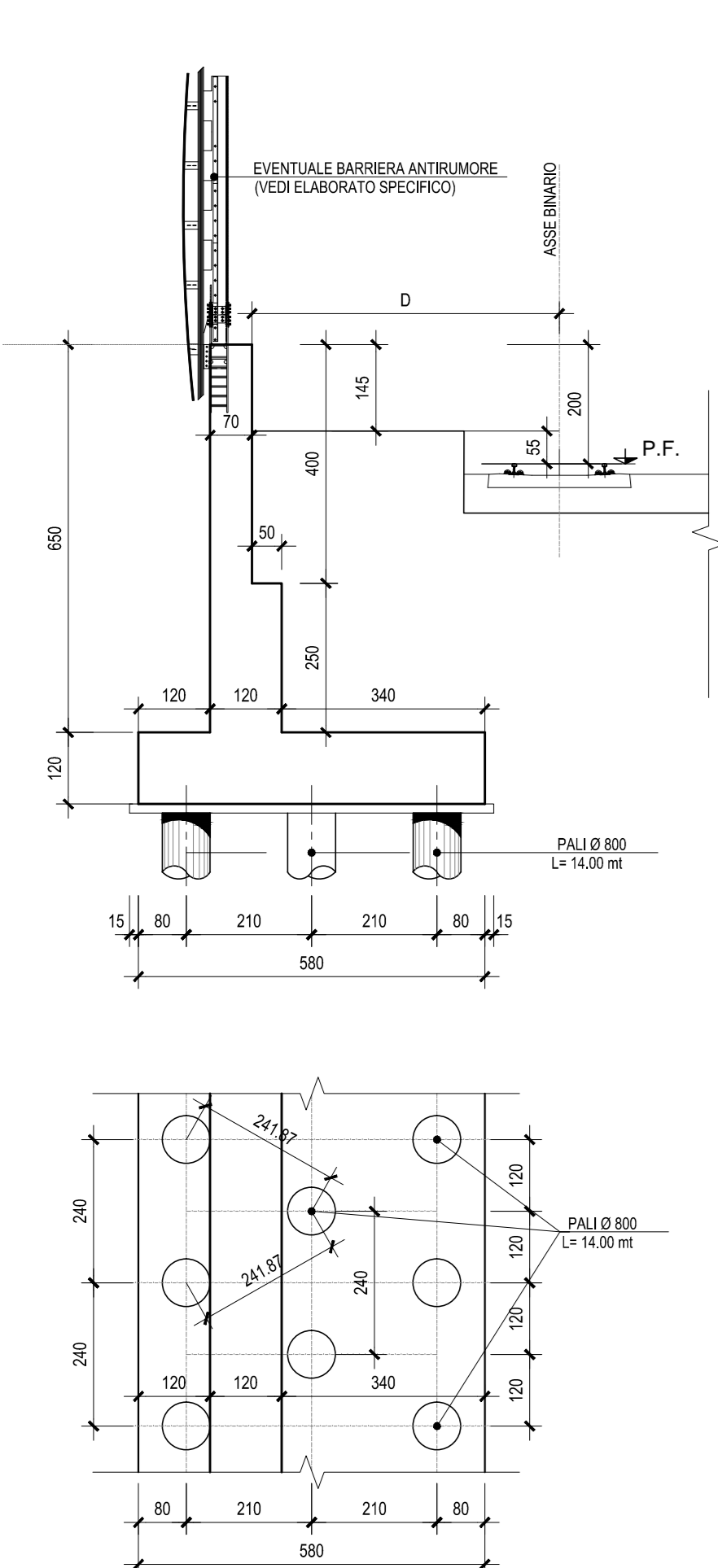


D = 5.10m Marciapedi FFP
D = 5.02m Marciapedi di Stazione

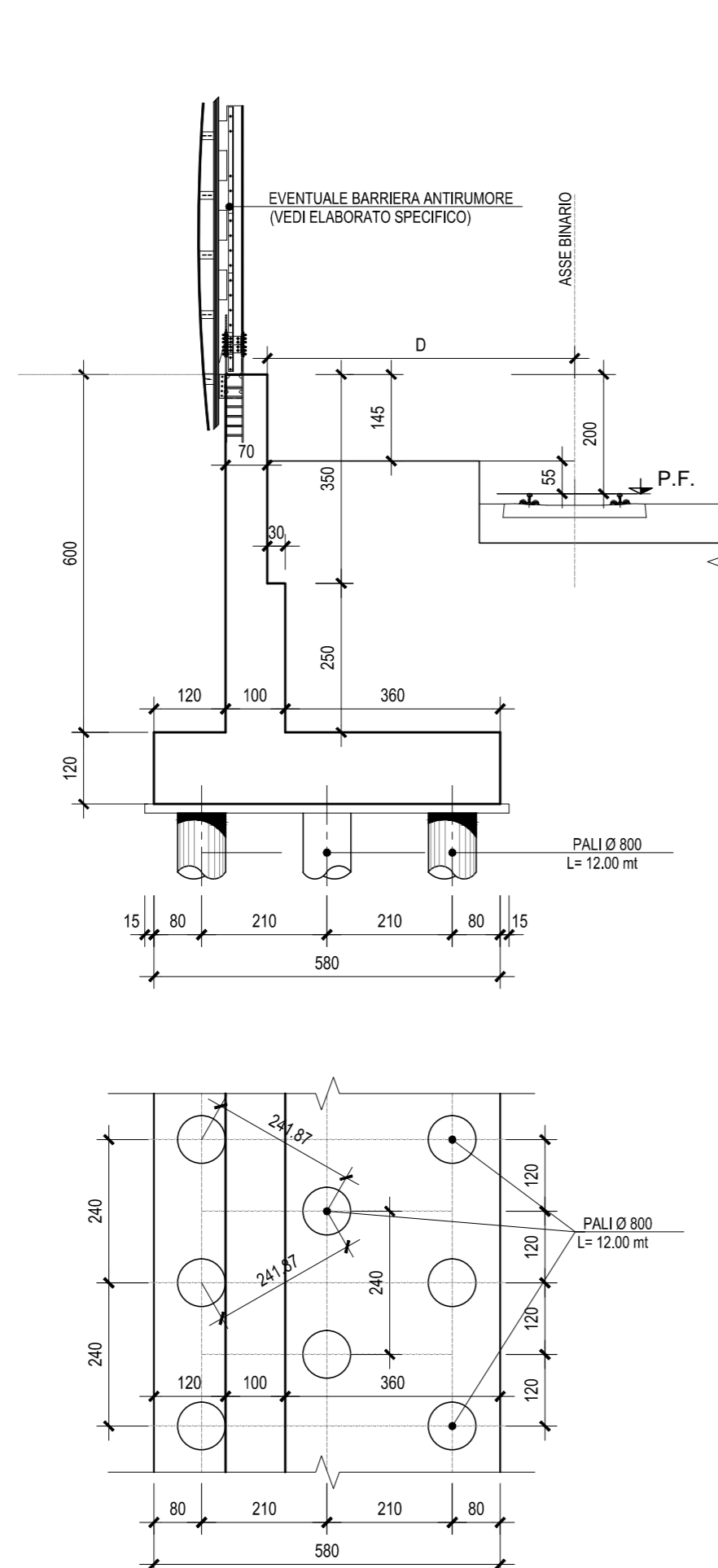
PARTICOLARE TESTA MURO IN TRATTI SENZA BARRIERA ANTRIMUORE



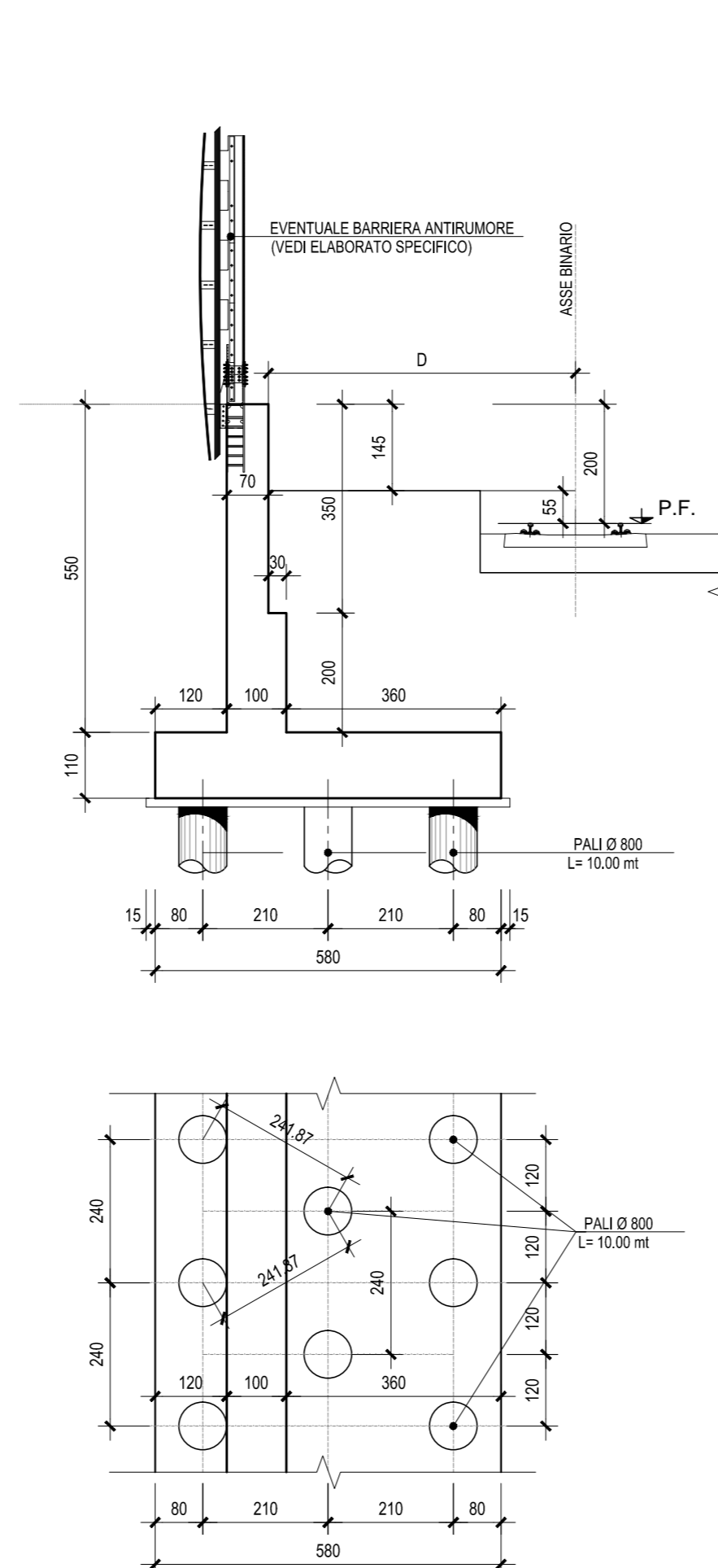
MURO TIPO BA 6.50



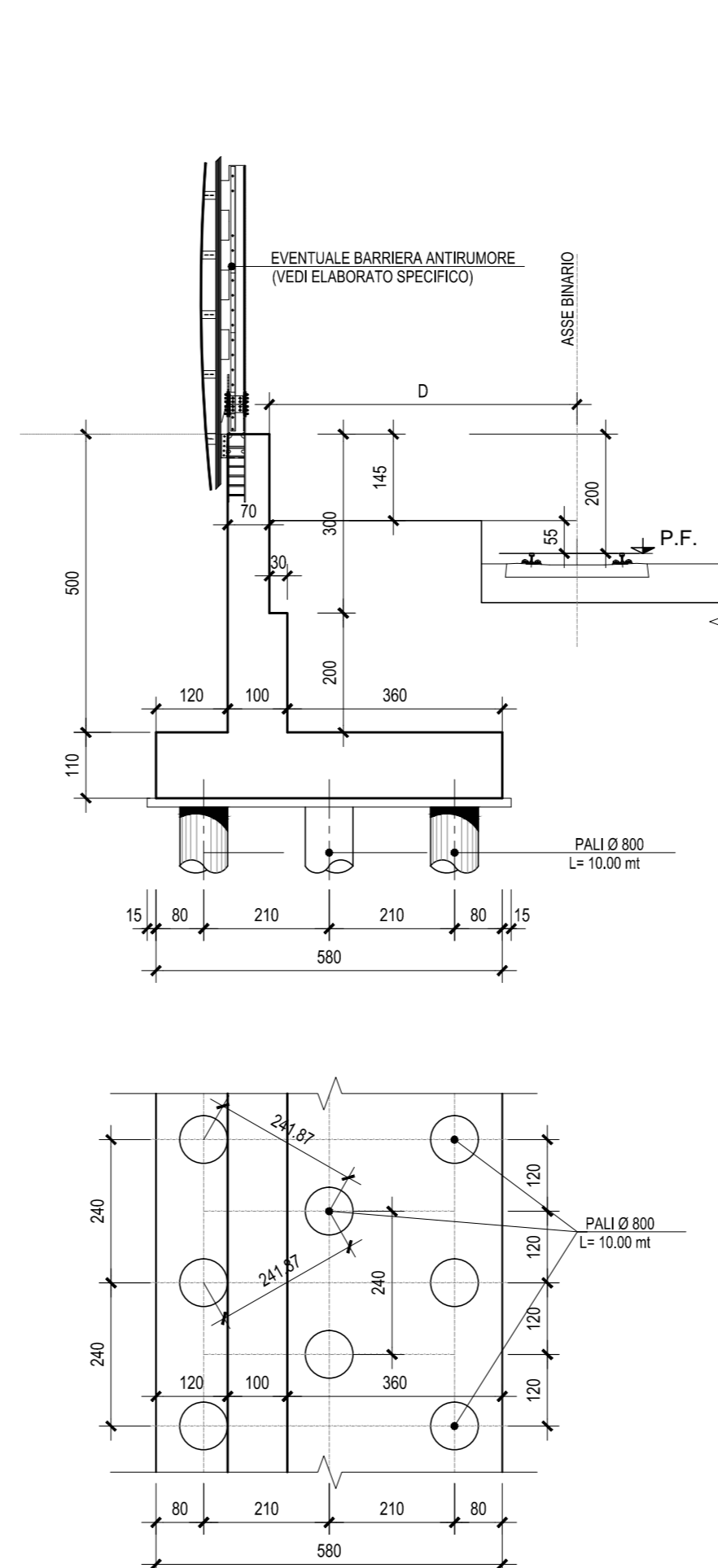
MURO TIPO BA 6.00



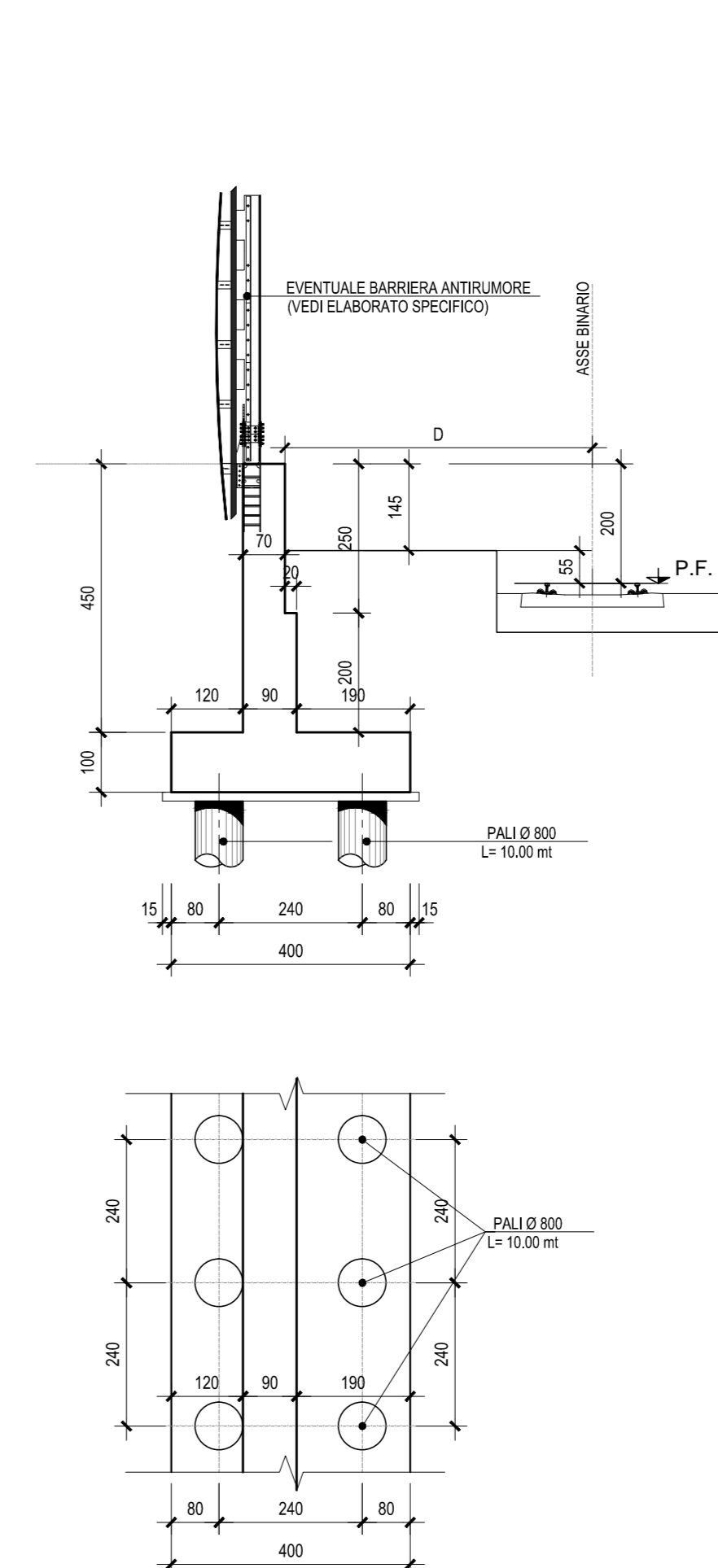
MURO TIPO BA 5.50



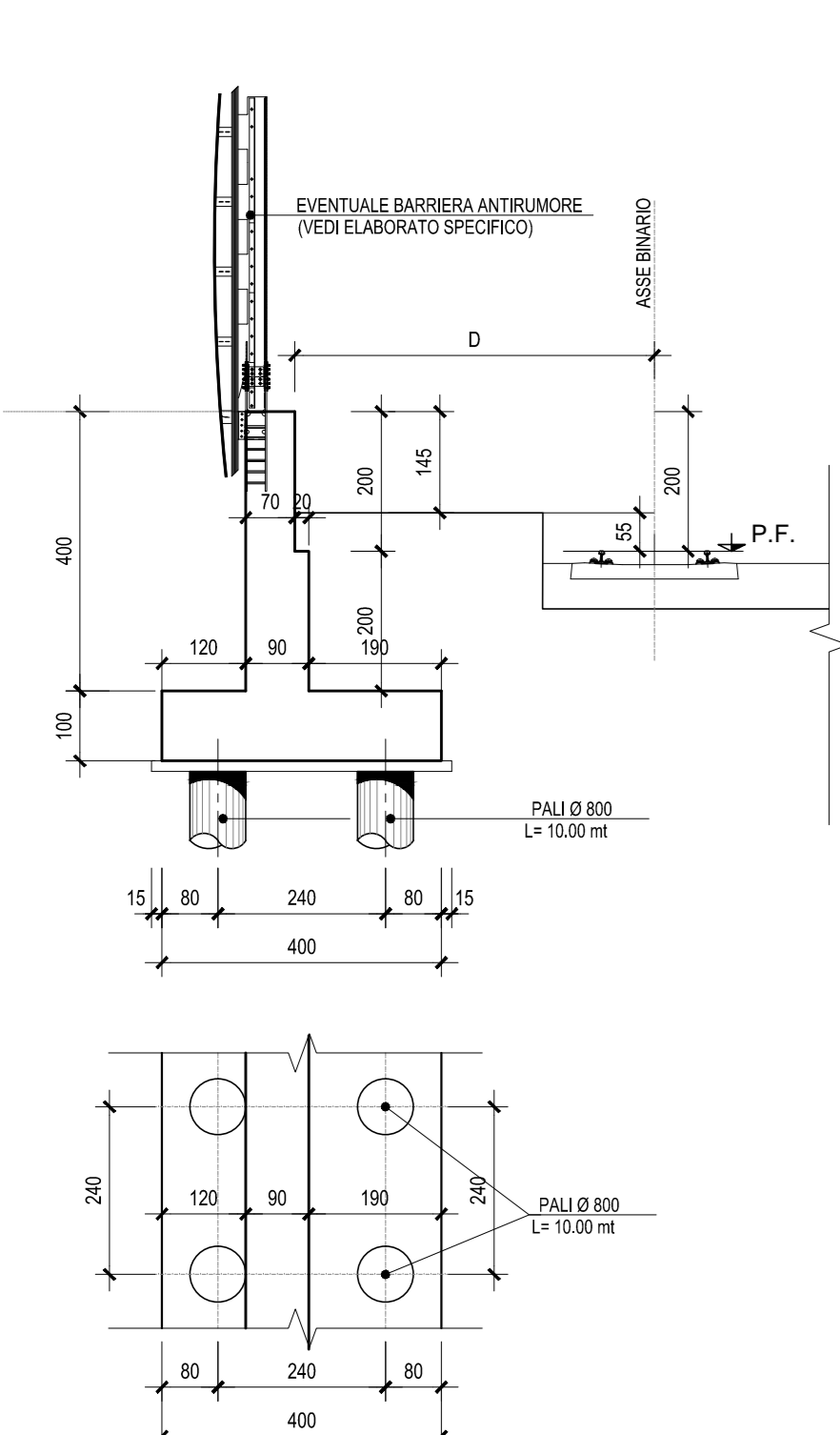
MURO TIPO BA 5.00



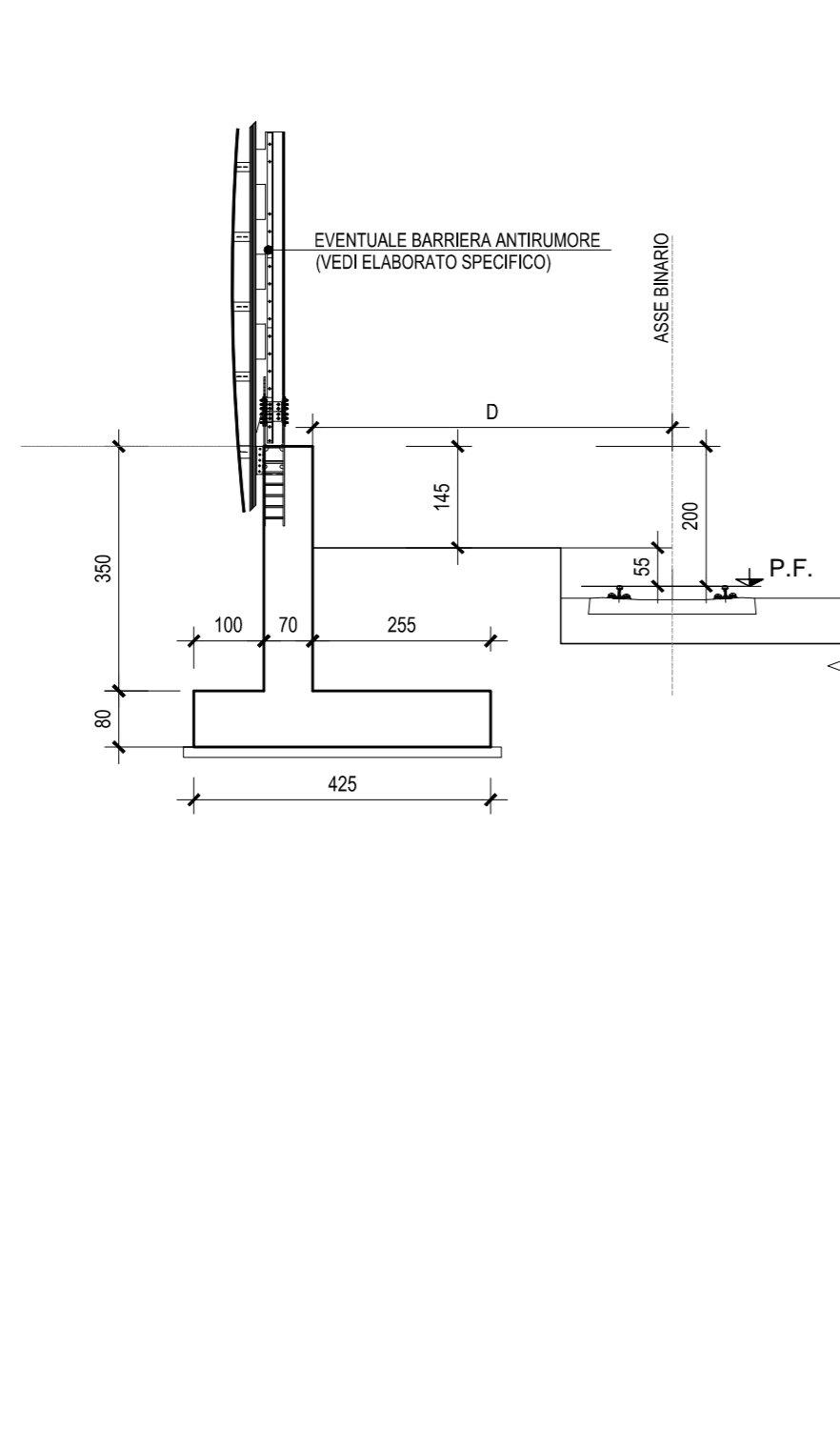
MURO TIPO BA 4.50



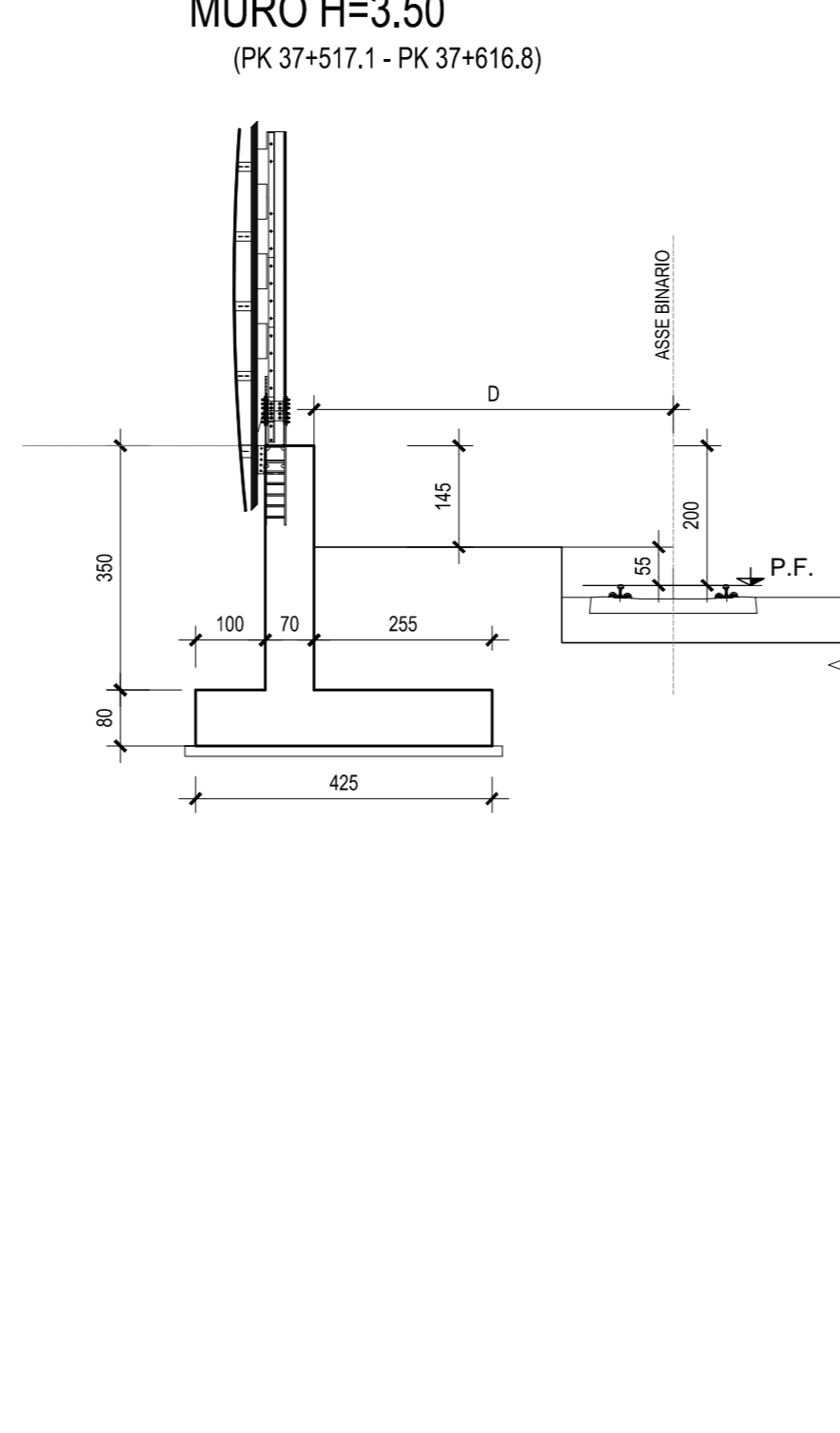
MURO TIPO BA 4.00



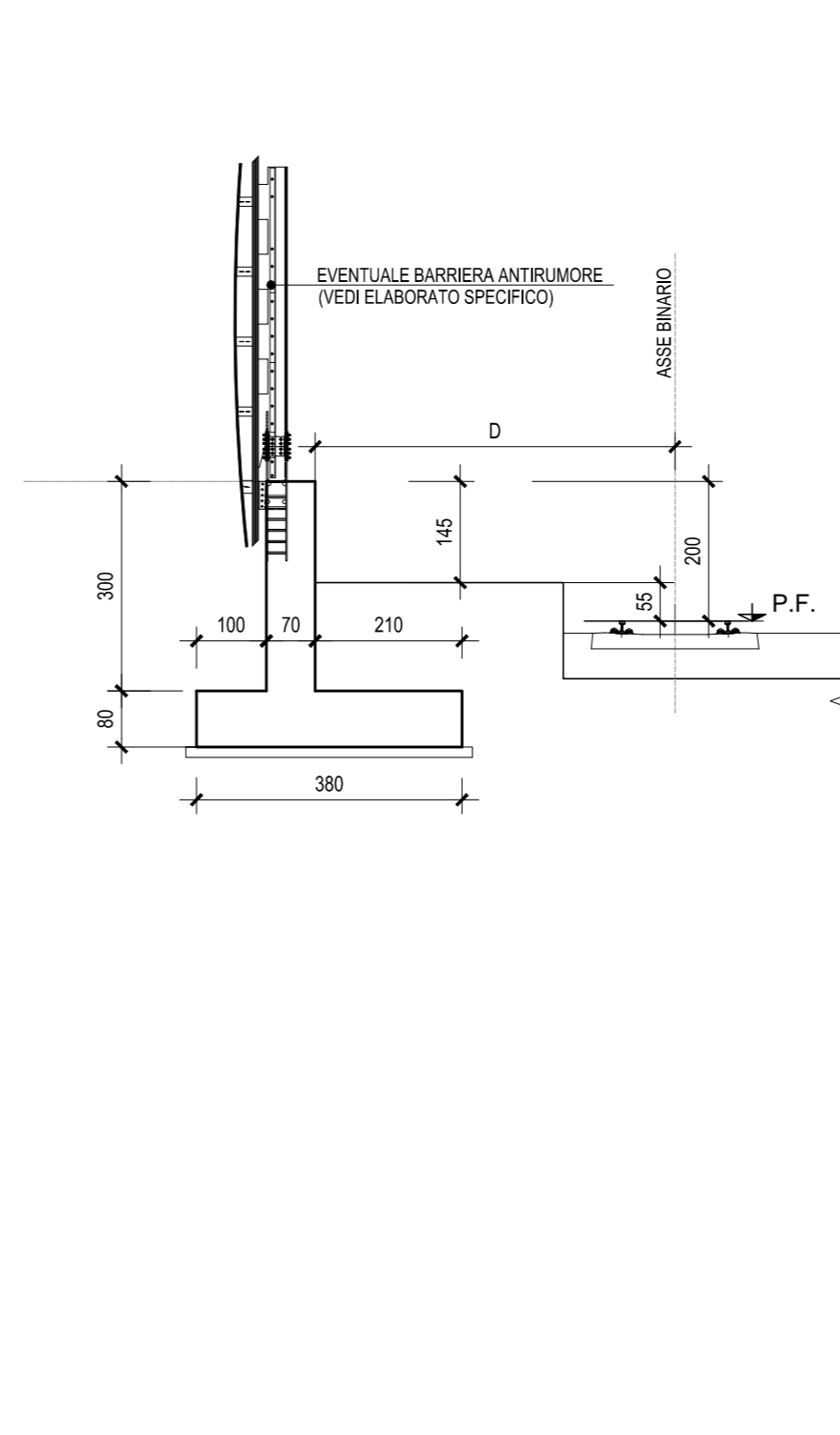
MURO TIPO BA 3.50



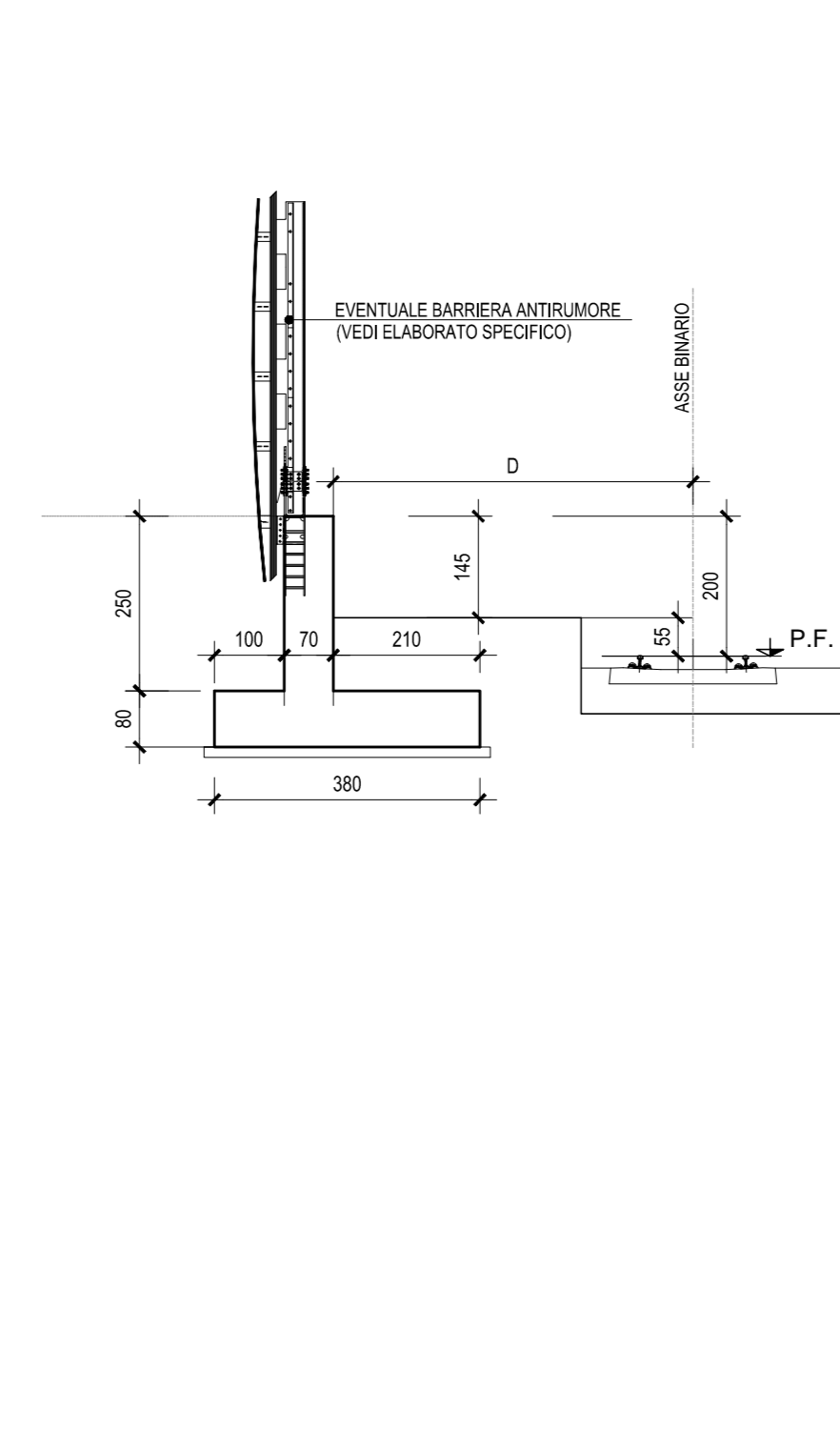
MURO H=3.50
(PK 37+517.1 - PK 37+616.6)



MURO TIPO BA 3.00



MURO TIPO BA 2.50



COMMITTENTE:

GRUPPO FERROVIE DELLO STATO ITALIANE

PROGETTAZIONE:

GRUPPO FERROVIE DELLO STATO ITALIANE

DIREZIONE TECNICA
UO INFRASTRUTTURE CENTRO
PROGETTO DEFINITIVO

ITINERARIO NAPOLI - BARI
RADDOPPIO TRATTA CANCELLO - BENEVENTO
II LOTTO FUNZIONALE FRASSO TELESINO - VITULANO

MURI DI SOSTEGNO DI SEDE
Muri di margine Marciapedi di Stazione e FFP - Sezioni Tipo

SCALA: 1:100

COMMESSA	LOTTO	FASE	ENTE	TIPO DOC.	OPERA/DISCIPLINA	PROGR.	REV.
IF0H	02	D	11	BA	OC0000	002	B

Revis.	Descrizione	Redatto	Data	Verificato	Data	Approvato	Data	Autorizzato	Data
A	Emissione Esecutiva	M. Rossi	06/2017	F. Bove	06/2017	F. Camore	06/2017		
B	Emissione Esecutiva	M. Rossi	08/2017	F. Bove	08/2017	F. Camore	08/2017		