

V ALT Vn. 31	
PR	35000.000
QV	73.700
Pc	0.00339
Pu	0.00206
DP	-0.00132
R	20000.000
T	13.227
T ₁	0.0004
Pr ₁	34986.773
Pr ₂	35013.227

V ALT Vn. 32	
PR	15370.000
QV	75.700
Pc	0.00366
Pu	0.00292
DP	0.00786
R	-20000.000
T	78.603
T ₁	0.154
Pr ₁	15381.597
Pr ₂	16048.600

V ALT Vn. 33	
PR	13613.000
QV	82.100
Pc	0.00987
Pu	-0.00286
DP	-0.01278
R	15000.000
T	95.846
T ₁	-0.308
Pr ₁	36519.159
Pr ₂	36710.846

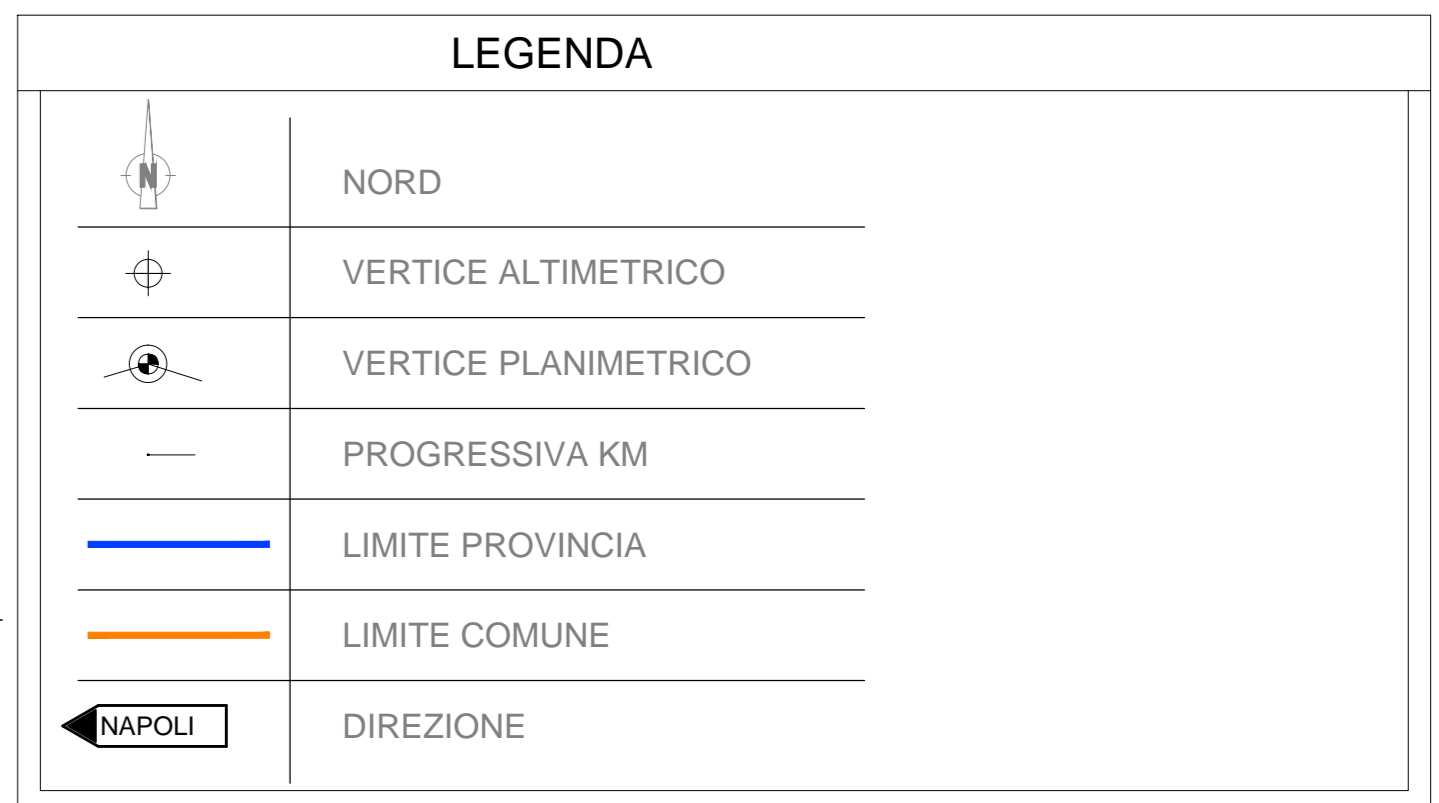
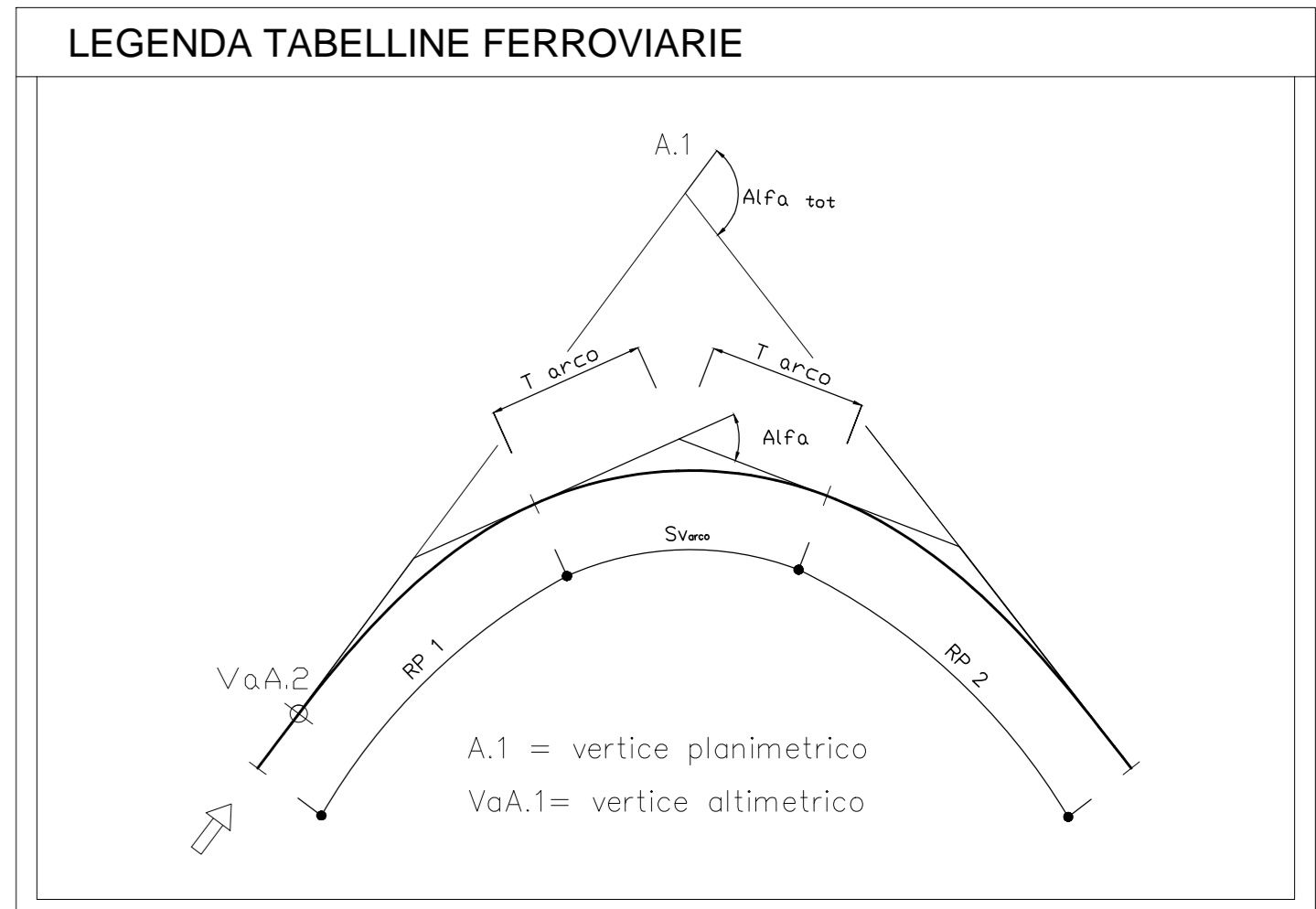
V ALT Vn. 34	
PR	36930.000
QV	81.200
Pc	-0.00286
Pu	-0.00987
DP	-0.00301
R	15000.000
T	52.608
T ₁	-0.292
Pr ₁	36877.392
Pr ₂	36982.605

V ALT Vn. 35	
PR	37320.000
QV	77.350
Pc	-0.00987
Pu	-0.00206
DP	0.00536
R	-20000.000
T	98.716
T ₁	0.244
Pr ₁	37221.289
Pr ₂	37418.716

V ALT Vn. 36	
PR	37890.000
QV	77.350
Pc	-0.00000
Pu	0.00536
DP	0.00536
R	-20000.000
T	53.638
T ₁	0.079
Pr ₁	37836.364
Pr ₂	37943.635

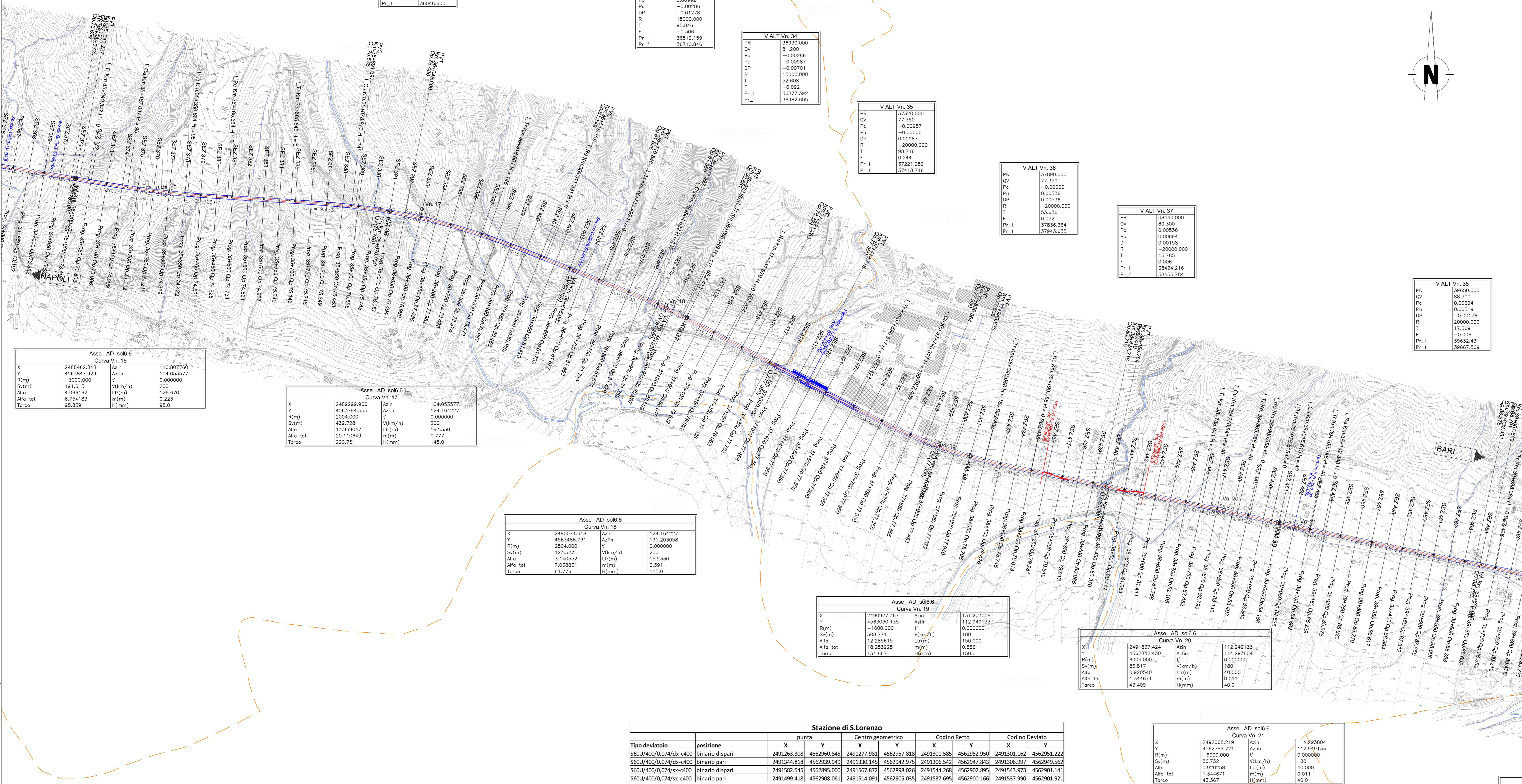
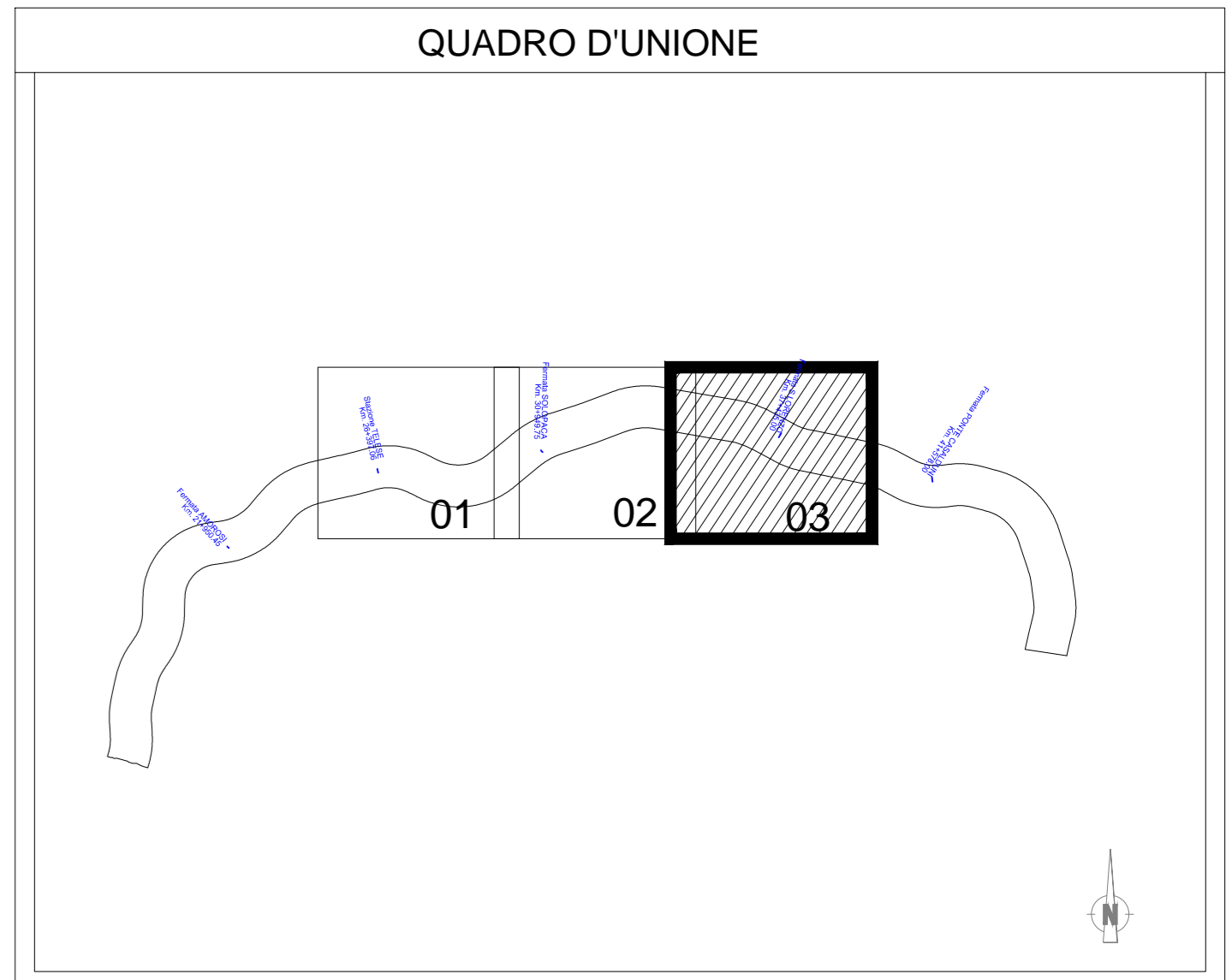
V ALT Vn. 37	
PR	38440.000
QV	80.300
Pc	0.00336
Pu	0.00694
DP	-0.00158
R	-20000.000
T	15.785
T ₁	0.006
Pr ₁	38424.216
Pr ₂	38455.784

V ALT Vn. 38	
PR	38950.000
QV	88.700
Pc	0.00694
Pu	0.00519
DP	-0.01176
R	20000.000
T	17.569
T ₁	-0.008
Pr ₁	38933.431
Pr ₂	39667.569



NOTE

1) -



Asse AD s06.6			
X	2488462.845	Azin	1110.807760
Y	4563847.929	Azin	104.053577
R(m)	-8000.000	T	0.000000
Sv(m)	191.613	V(km/h)	200
Alfa	4.066162	Lr(m)	126.670
Alfa tot	6.74183	m(m)	0.223
Torco	95.839	H(mm)	95.0

Asse AD s06.6			
X	2489299.966	Azin	104.053577
Y	4563794.555	Azin	124.164227
R(m)	2004.000	T	0.000000
Sv(m)	439.728	V(km/h)	200
Alfa	13.896847	Lr(m)	193.300
Alfa tot	20.110649	m(m)	0.777
Torco	220.751	H(mm)	145.0

Asse AD s06.6			
X	2490027.367	Azin	124.164227
Y	4563300.135	Azin	131.203088
R(m)	2504.000	T	0.000000
Sv(m)	13.996847	V(km/h)	200
Alfa	3.140552	Lr(m)	153.330
Alfa tot	7.038831	m(m)	0.391
Torco	61.778	H(mm)	115.0

Asse AD s06.6			
X	2490927.367	Azin	131.203088
Y	4563300.135	Azin	112.949133
R(m)	308.771	T	0.000000
Sv(m)	12.828151	V(km/h)	180
Alfa	18.253925	Lr(m)	150
Alfa tot	154.867	m(m)	0.586
Torco		H(mm)	0.501

Asse AD s06.6			
X	2491837.424	Azin	112.949133
Y	4562842.430	Azin	114.293804
R(m)	6004.000	T	0.000000
Sv(m)	86.817	V(km/h)	180
Alfa	0.920258	Lr(m)	40.000
Alfa tot	1.344671	m(m)	0.011
Torco	43.409	H(mm)	40.0

Asse AD s06.6			
X	2492068.219	Azin	114.293804
Y	4562789.721	Azin	112.949133
R(m)	-8000.000	T	0.000000
Sv(m)	86.732	V(km/h)	180
Alfa	0.920258	Lr(m)	40.000
Alfa tot	1.344671	m(m)	0.011
Torco	43.367	H(mm)	40.0

Stazione di S. Lorenzo									
		punta		Centro geometrico		Codino Retto		Codino Deviato	
Tipo deviativo	posizione	X	Y	X	Y	X	Y	X	Y
SGU/400/0,074/dx-c400	binario dispari	2491263.308	4562960.845	2491277.981	4562957.818	2491301.585	4562952.950	2491301.162	4562951.222
SGU/400/0,074/dx-c400	binario pari	2491344.818	4562939.949	2491330.145	4562942.975	2491306.542	4562947.843	2491306.997	4562949.562
SGU/400/0,074/sx-c400	binario dispari	2491582.545	4562895.000	2491567.872	4562898.026	2491544.268	4562902.895	2491543.973	4562901.141
SGU/400/0,074/sx-c400	binario pari	2491499.418	4562908.091	2491514.091	4562905.035	2491537.695	4562900.166	2491537.990	4562901.921

COMMITTENTE: **RFI** RETE FERROVIARIA ITALIANA GRUPPO FERROVIE DELLO STATO ITALIANE

PROGETTAZIONE: **ITALFERR** GRUPPO FERROVIE DELLO STATO ITALIANE

DIREZIONE TECNICA
U.O. INFRASTRUTTURE CENTRO
PROGETTO DEFINITIVO

ITINERARIO NAPOLI - BARI
RADDOPPIO TRATTA CANCELLO - BENEVENTO
IL LOTTO FUNZIONALE FRASSO TELESINO - VITULANO (BN)
Elaborati tracciato Sub Lotto 02
planimetria e tracciamento dal Km 34+800 al Km 39+700

SCALA: 1:5000

COMMESSA	LOTTO	FASE	ENTE	TIPO DOC.	OPERADISCIPLINA	PROGR.	REV.
IF0H	22	D	11	P5	IF0008	003	A

Rev.	Descrizione	Redatto	Data	Verificato	Data	Approvato	Data	Autorizzato	Data
A	Emissione Esecutiva	M.Troisi	mag 2017	S.Opera	mag 2017	F. Cienna	mag 2017	F. Arduni	06/2017