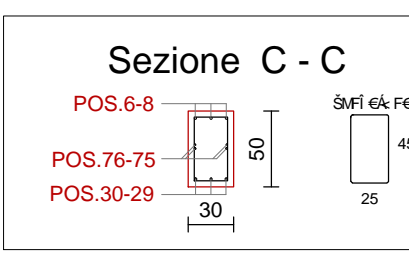
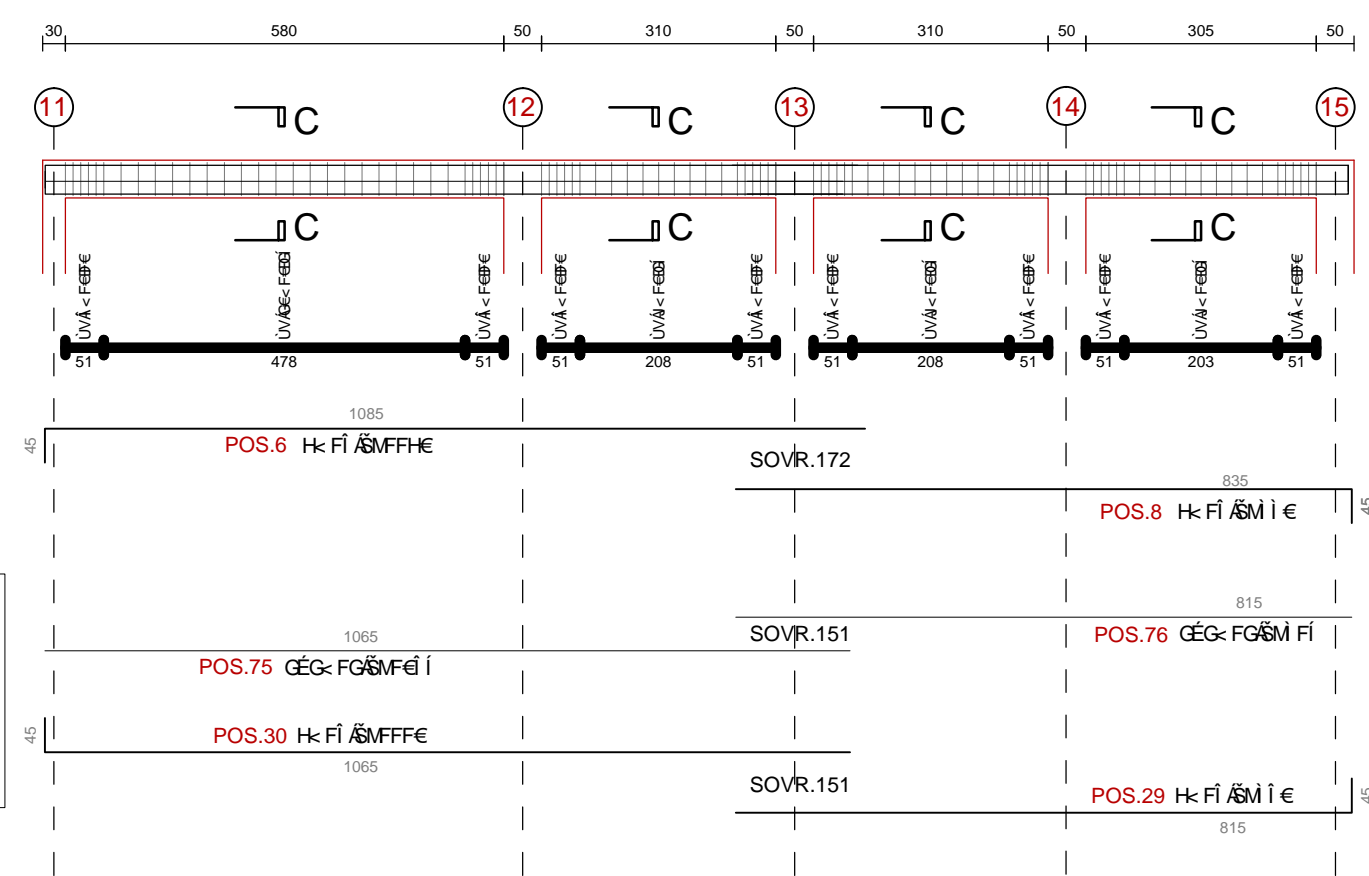
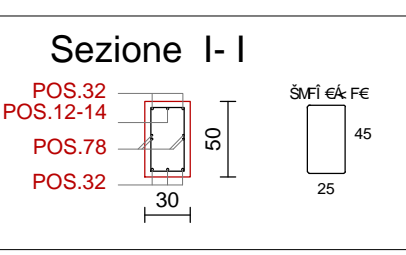
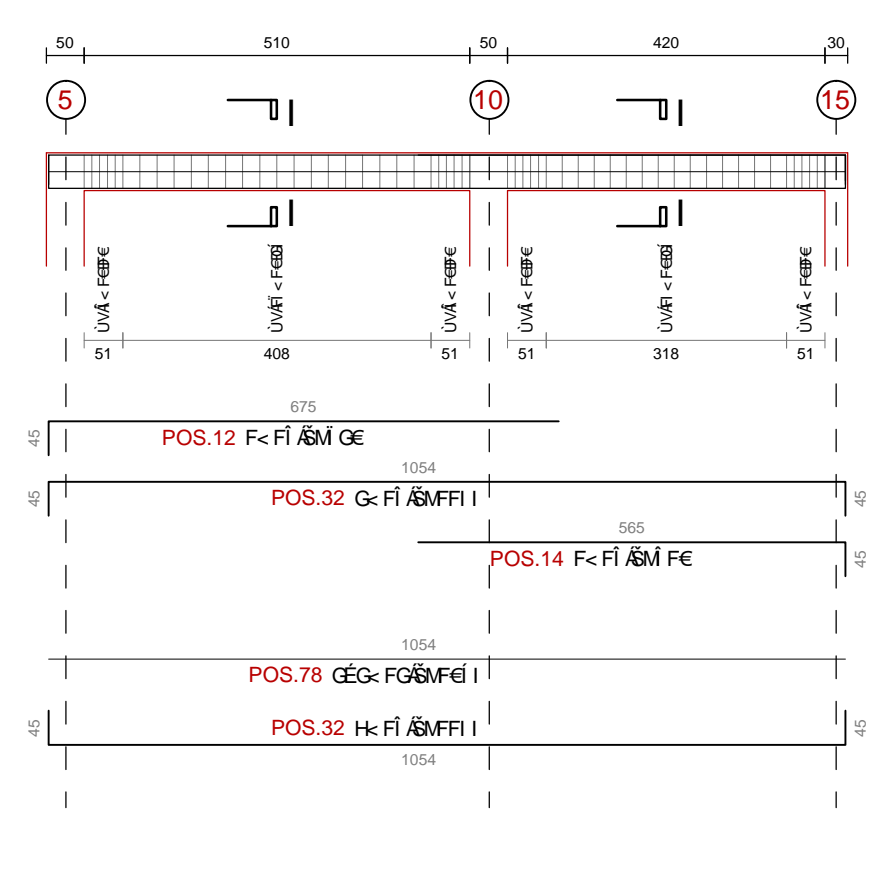


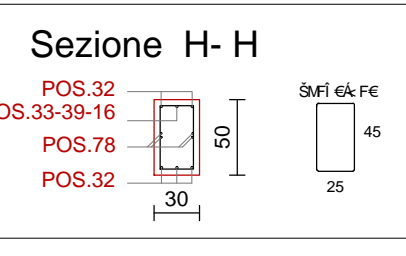
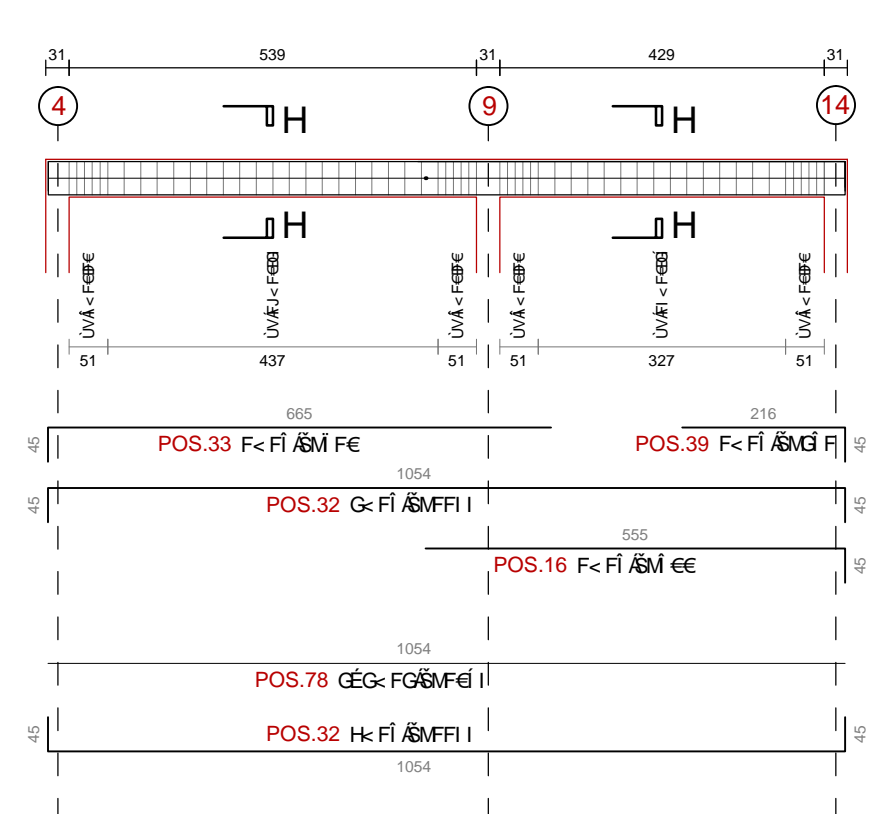
TRAVATA 3



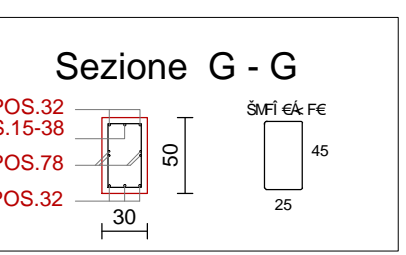
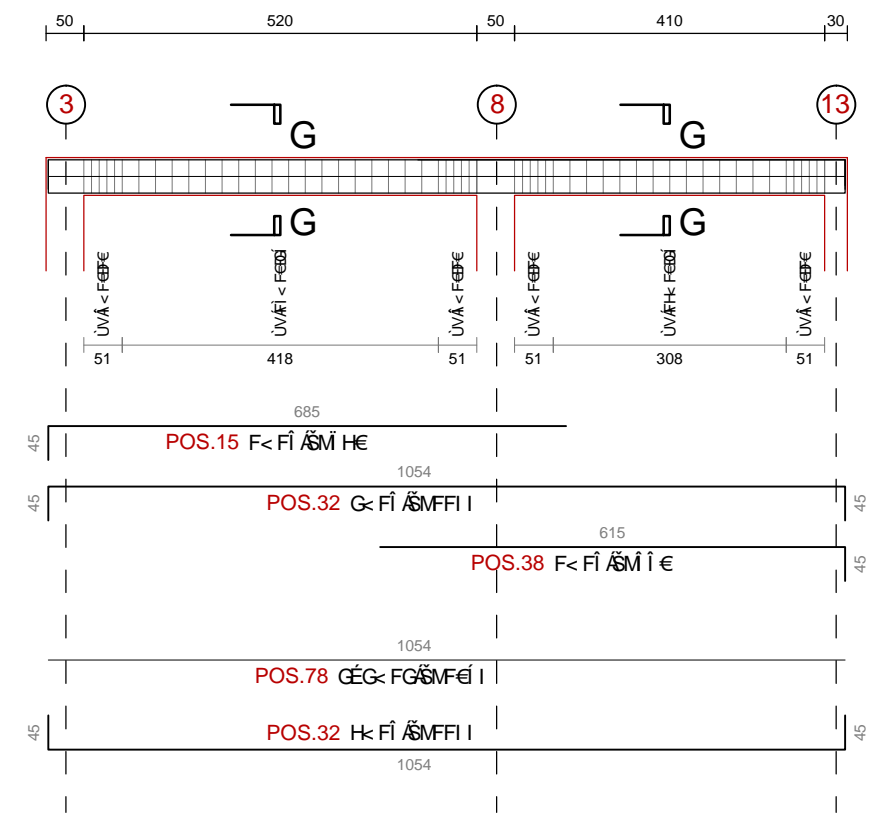
TRAVATA 9



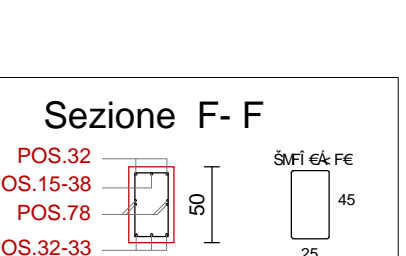
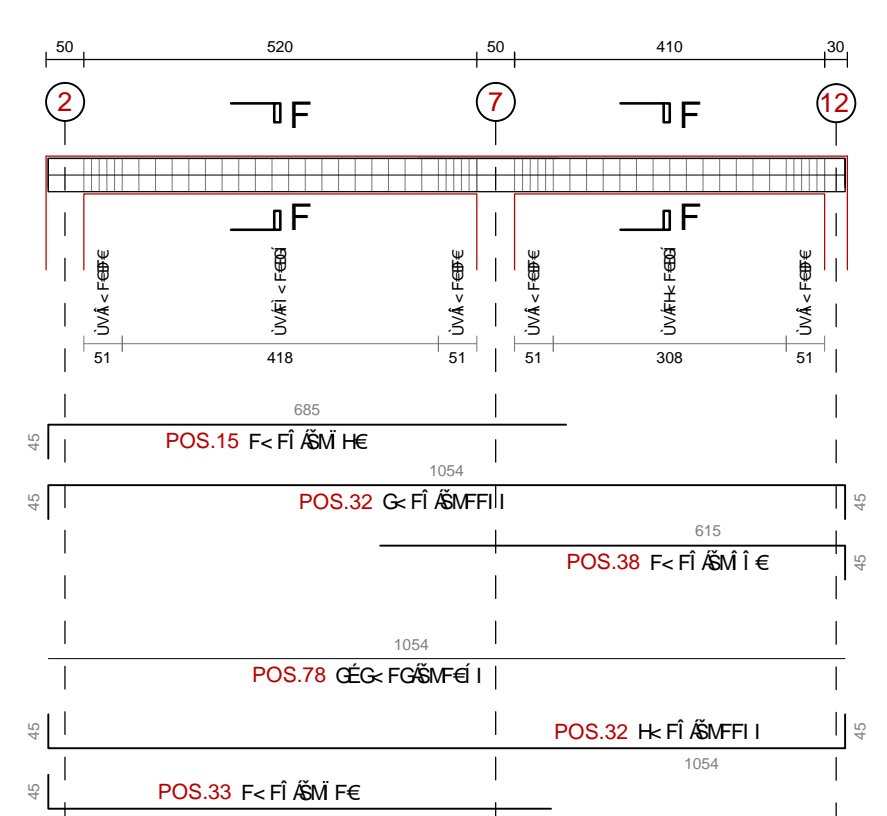
TRAVATA 8



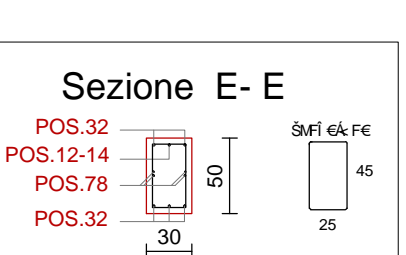
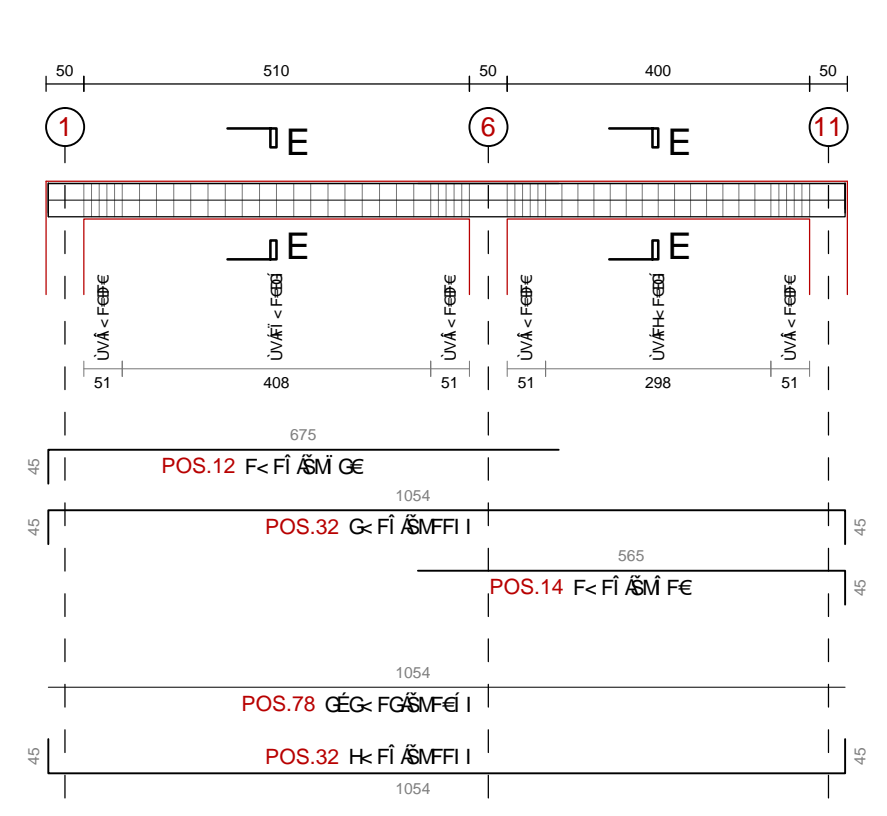
TRAVATA 7



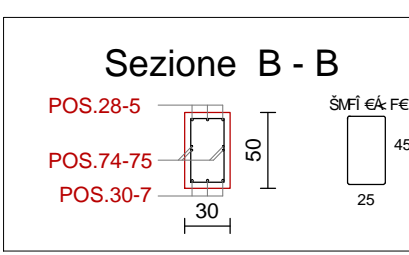
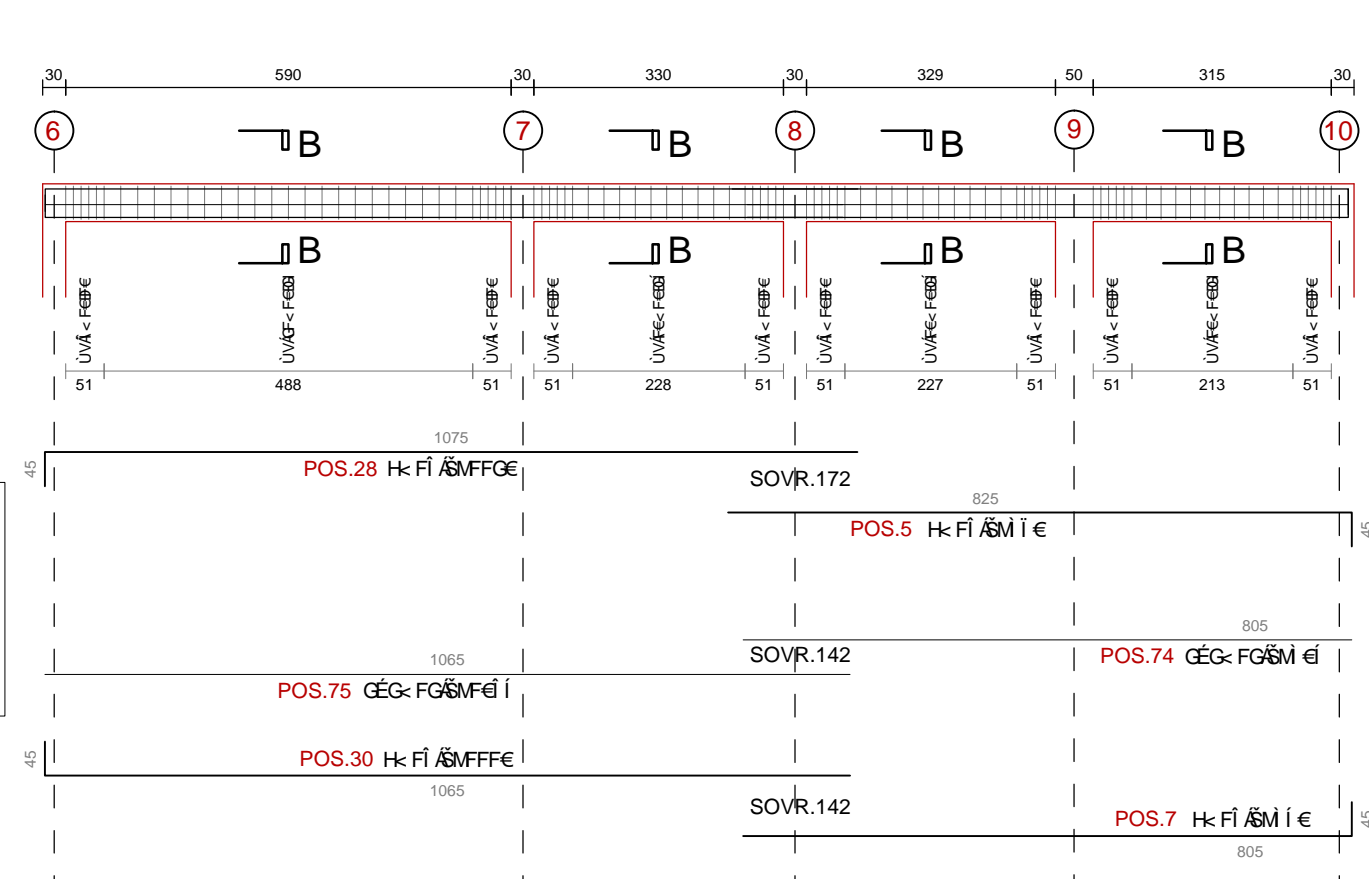
TRAVATA 6



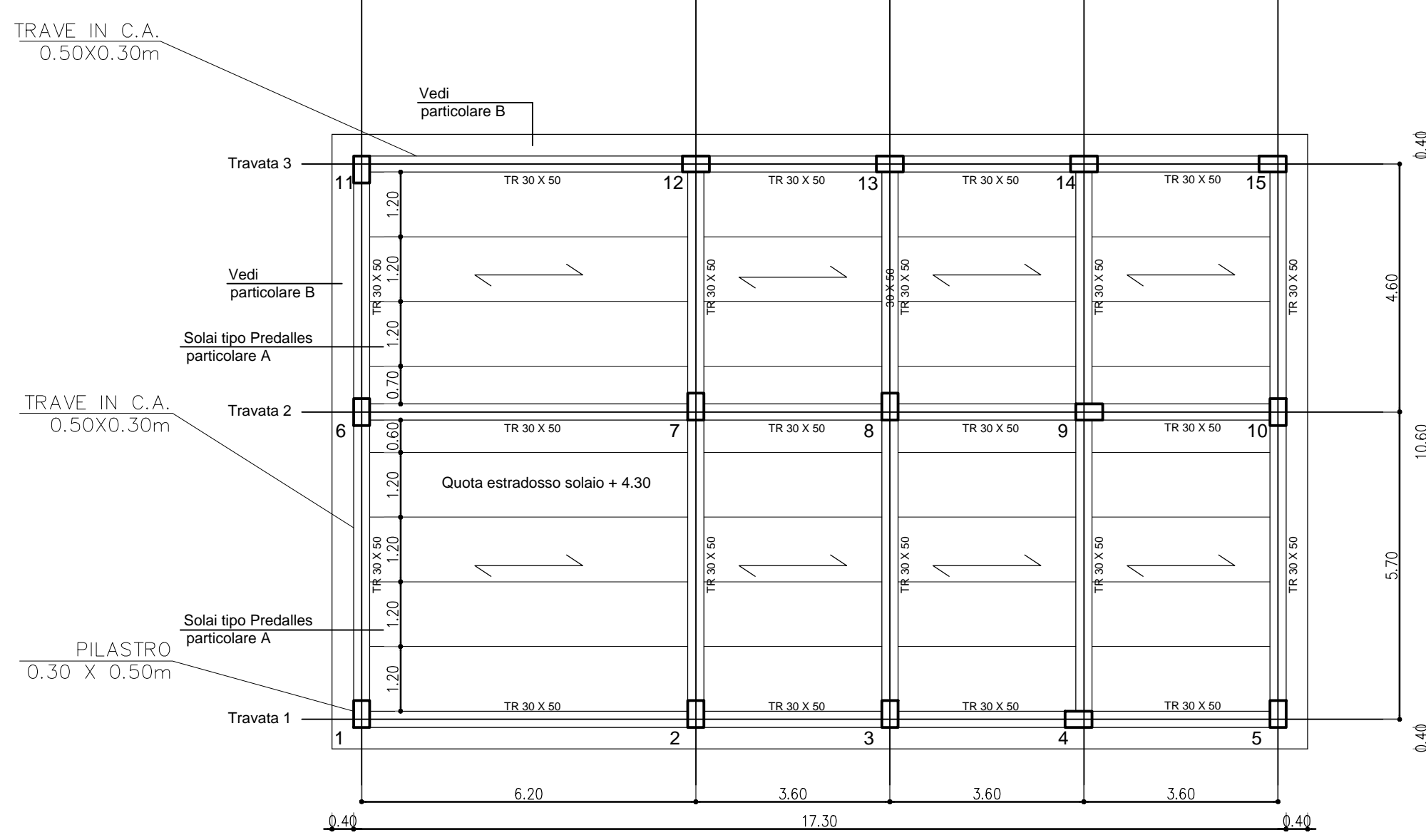
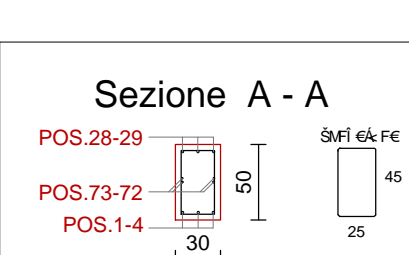
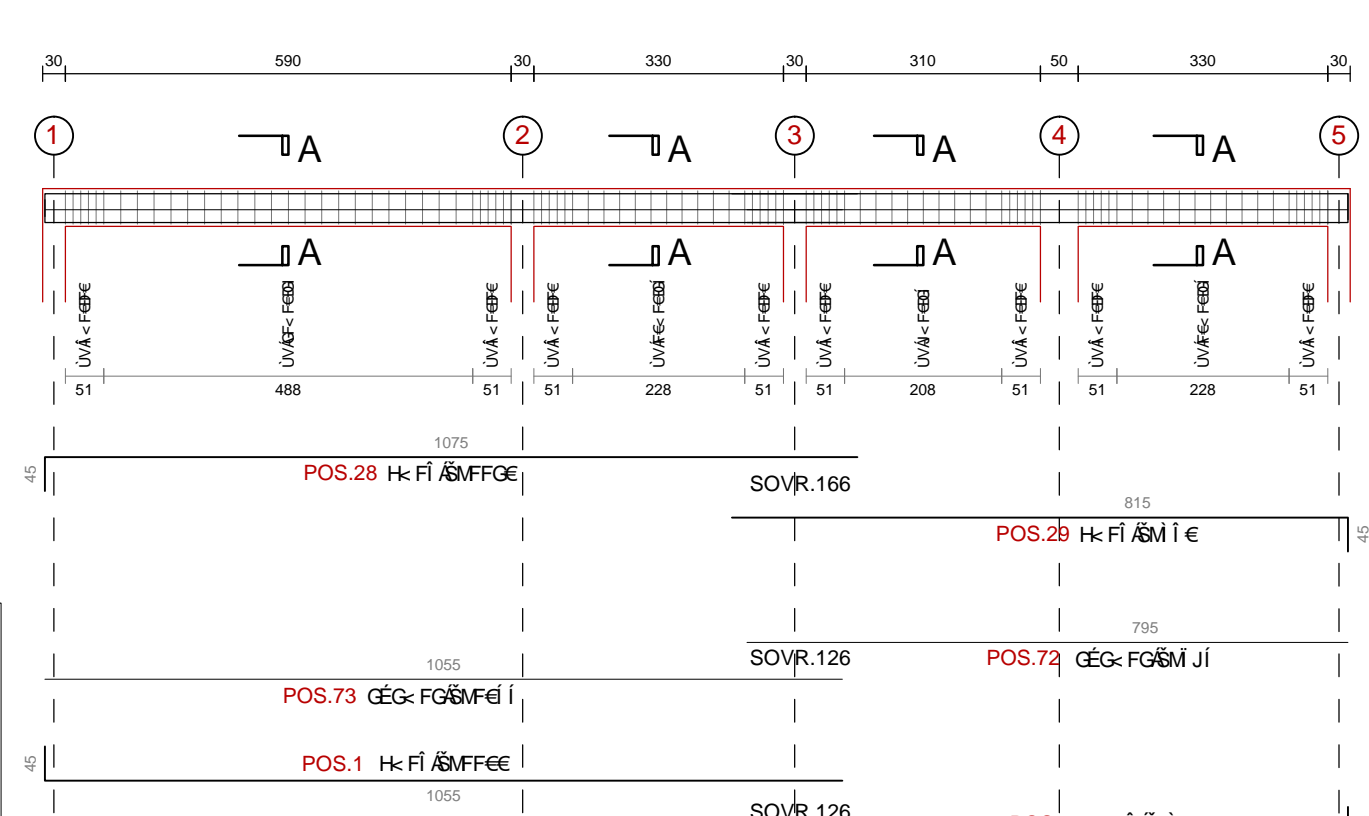
TRAVATA 5



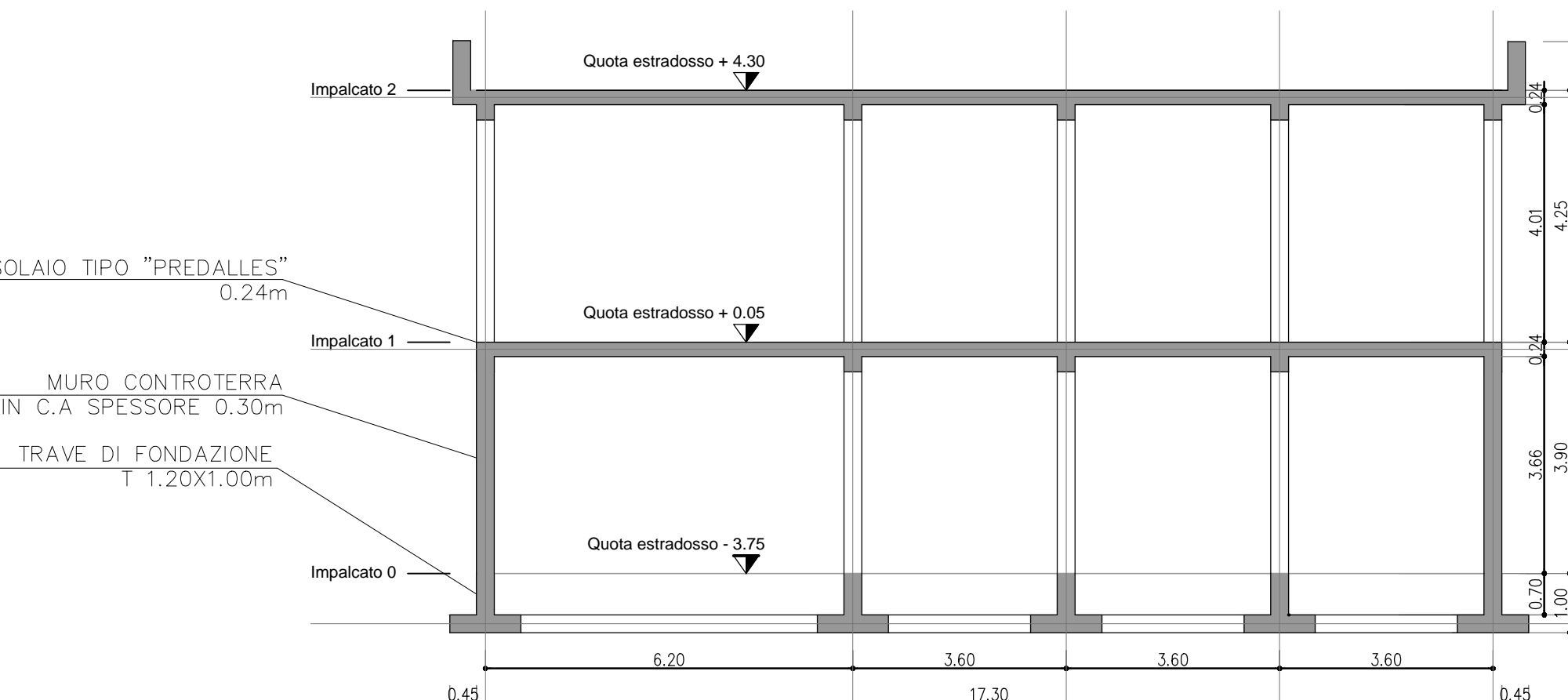
TRAVATA 2



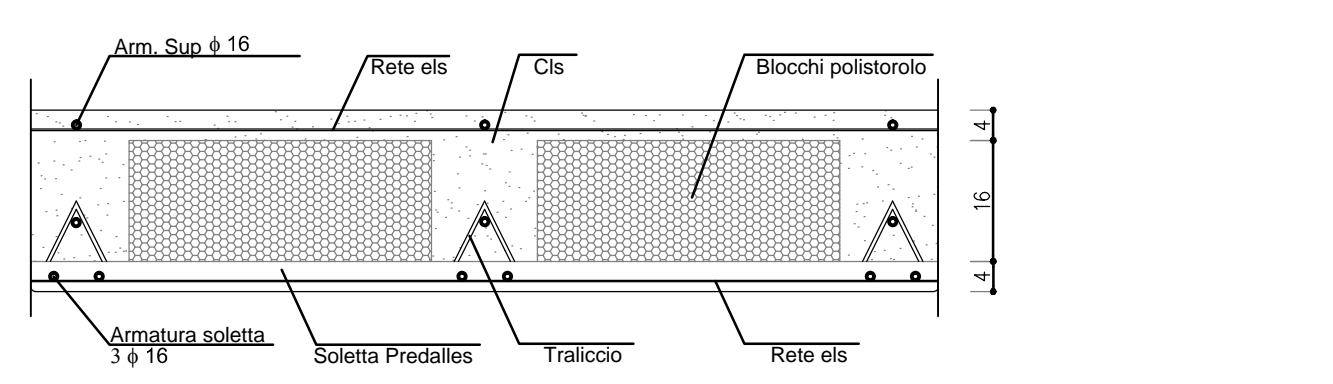
TRAVATA 1



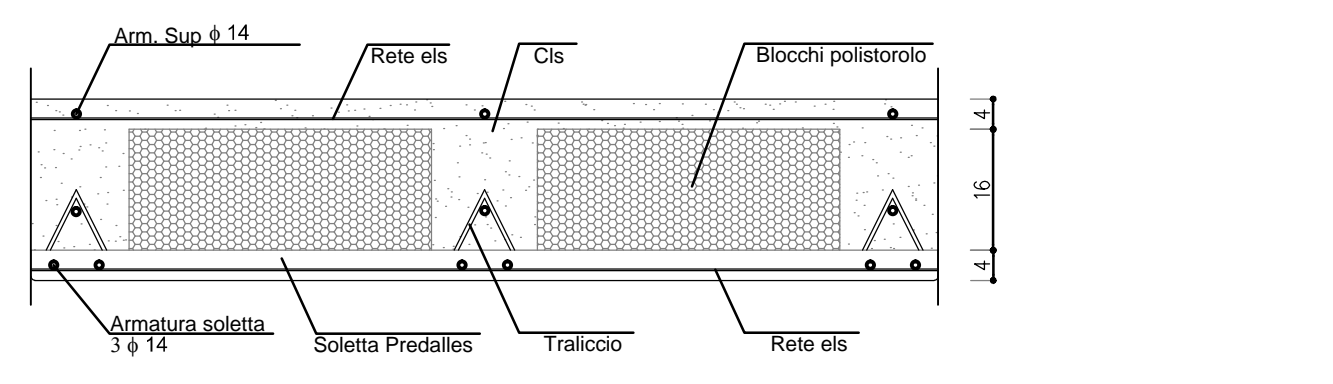
SEZIONE SCHEMATICA SCALA 1:100



PARTICOLARE DEL SOLAIO RINFORZATO SCALA 1:10

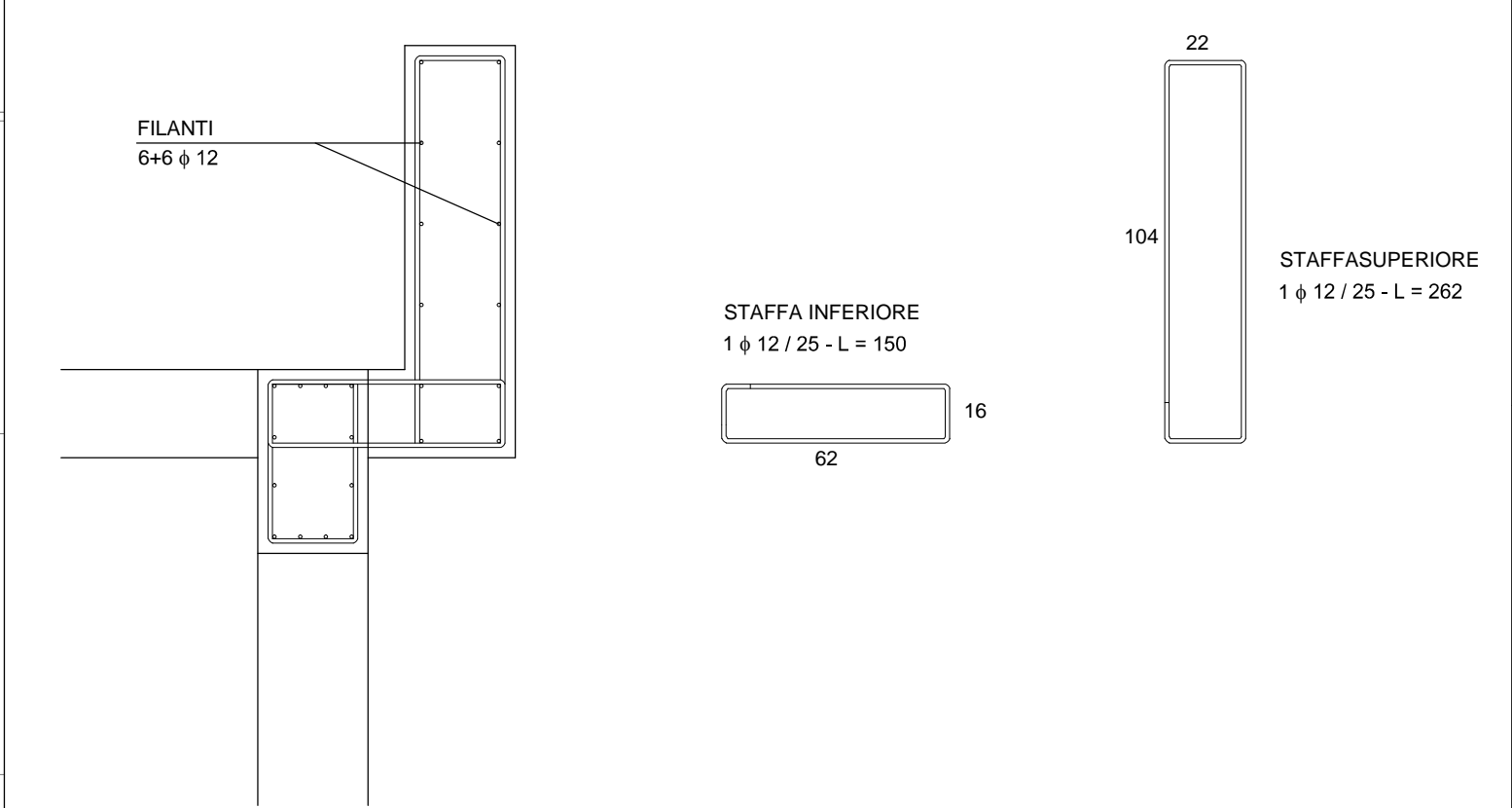


PARTICOLARE DEL SOLAIO TIPO SCALA 1:10

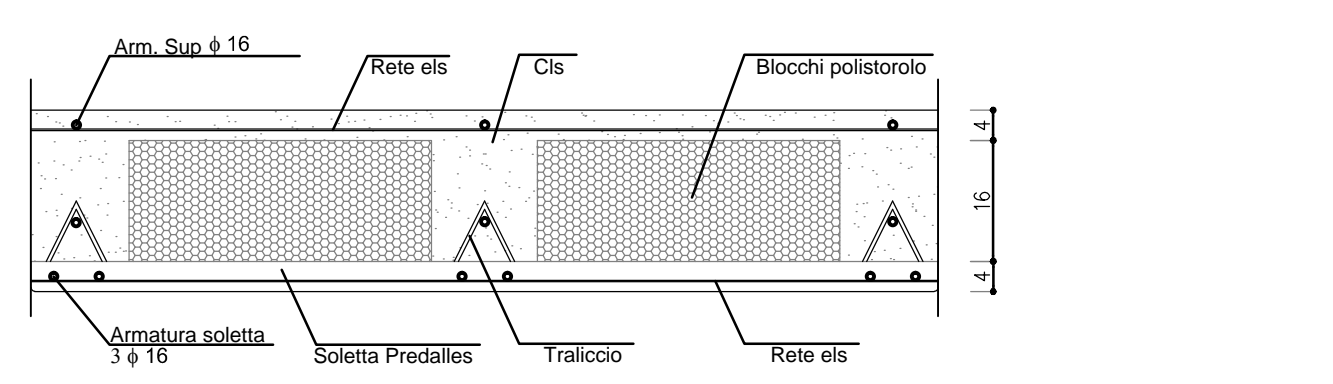


FONDAZIONI E GETTI CONTROTERRA	
CLASSE DI RESISTENZA	C 25-30
MASSIMO RAPPORTO A/C	≤ 0,55
CLASSE DI CONSISTENZA	S4
DIAMETRO MAZ AGGREGATI	20 mm
CLASSE DI ESPOSIZIONE	X C2
ELEVAZIONE E SOLETTE	
CLASSE DI RESISTENZA	C 25-30
MASSIMO RAPPORTO A/C	≤ 0,60
CLASSE DI CONSISTENZA	S4
DIAMETRO MAZ AGGREGATI	25 mm
CLASSE DI ESPOSIZIONE	X C3
FONDAZIONI E GETTI CONTROTERRA	
ACCIAIO IN BARRE AD ADERENZA MIGLIORATA	B450C
COPRIFERRO PER ELEVAZIONE	30 mm
COPRIFERRO PER FONDAZIONE	50 mm
SOVRAPPOSIZIONE MINIMA PARI A	20 DIAMETRI
INCIDENZA ARMATURA TRAVI	
MINIMA PERCENTUALE ARMATURA RISPETTO AL CLS	0,31%
MASSIMA PERCENTUALE ARMATURA RISPETTO AL CLS	1,55%

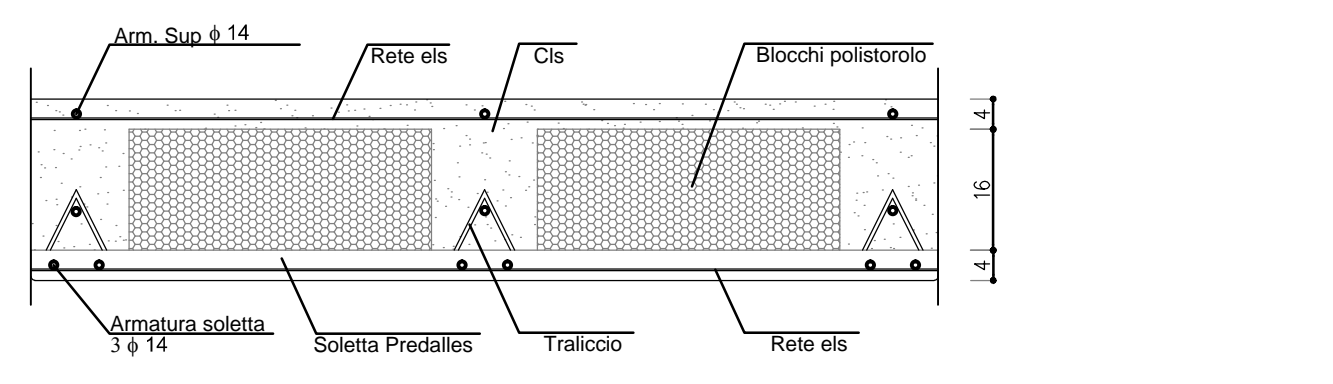
PARTICOLARE MURETTO DI CORONAMENTO SCALA 1:20



PARTICOLARE DEL SOLAIO RINFORZATO SCALA 1:10



PARTICOLARE DEL SOLAIO TIPO SCALA 1:10



Autostrada Brescia Verona Vicenza Padova SpA
Via Filadelfia 71 - 37135 Verona
tel. 0458272222 Fax 0458200051 Casella Postale 46004 www.autostrad.it
AREA COSTRUZIONI AUTOSTRADALI

AUTOSTRADA VALDASTICO A31 NORD

1° LOTTO Piovene Rocchette - Valle dell'Astico

PROGETTO DEFINITIVO

COMMITTENTE
S.p.A. AUTOSTRADA BRESCIA VERONA VICENZA PADOVA
Area Costruzioni Autostradali

PRESTATORE DI SERVIZI:
CONSORZIO RAETIA

RESPONSABILE DELL'OPERAZIONE
TRA LE PARTI STRUTTURISTICHE
Technica S.p.A. - Ing. Angelo Perino

PROGETTAZIONE:
ING. GABRIELE COSTANTINI
ING. GABRIELE COSTANTINI
ING. GABRIELE COSTANTINI

RAPPRESENTANTE: Dott. Ing. Alberto Scatti

ELABORATO: EDIFICI E STRUTTURE A CORREDO
CASELLO DI COLLO DEL CENGIO
STRUTTURALE
EDIFICIO CASELLO - IMPALCATO 2 - CARPENTERIE E ARMATURE

Progressivo: **09 01 02 003 02**

CUP: GZ1B1.30036.60005
WBS: 825.A11L1
COMMESSA: J16L1

CAPO COMMESSA
PER LA PROGETTAZIONE
Dott. Ing. Gabriele Costantini

SCALA: 1:100
ACQUE FILE: J16L1_09_01_02_003_0304_OPD_02.dwg
DATA: 01/08/2017
REVISIONE PER VERIFICA: SINTEL ENGINEERING - G. ZORNO / M. BAFFA PAGANI / F. COCCANTE
DATA: 02/08/2017
REVISIONE PER RECEPIMENTO OSSERVAZIONI: SINTEL ENGINEERING - G. ZORNO / M. BAFFA PAGANI / F. COCCANTE