

FOTO 1

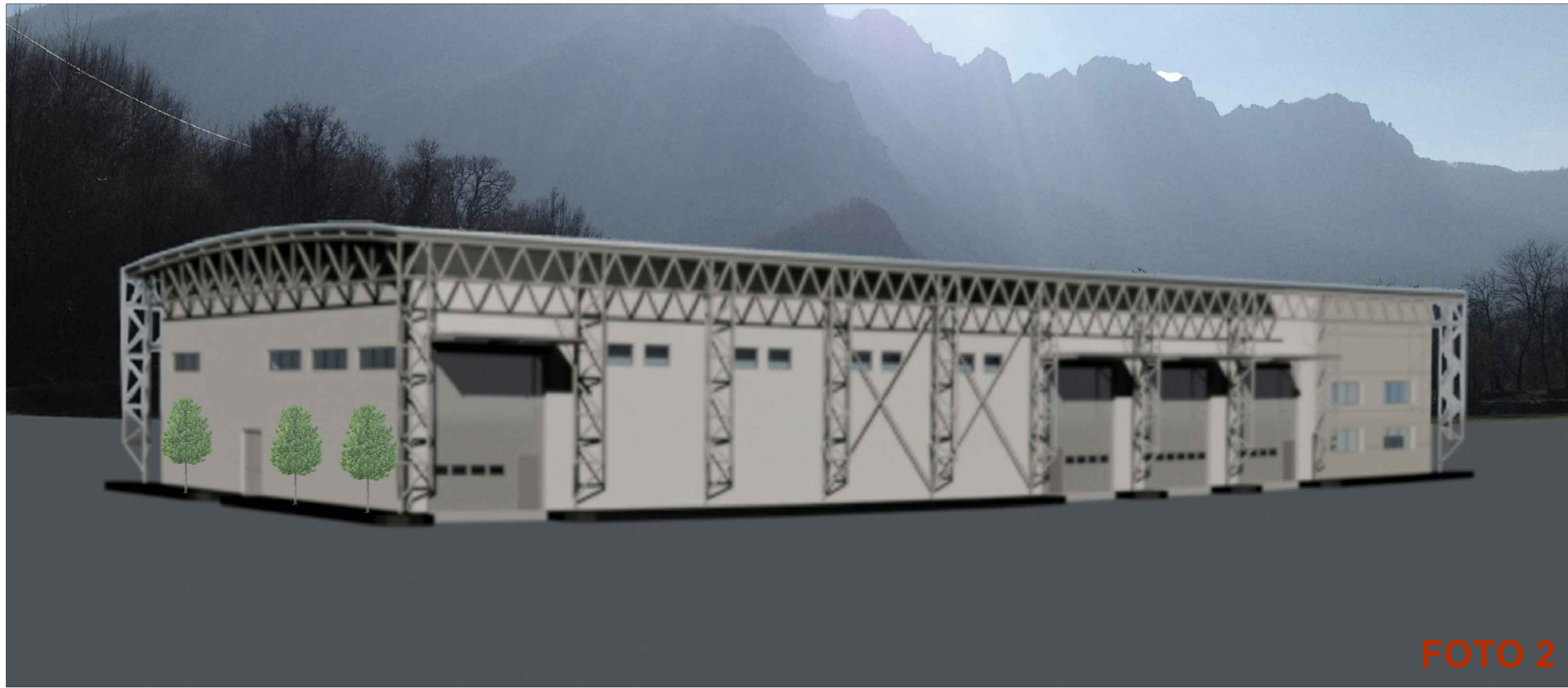


FOTO 2

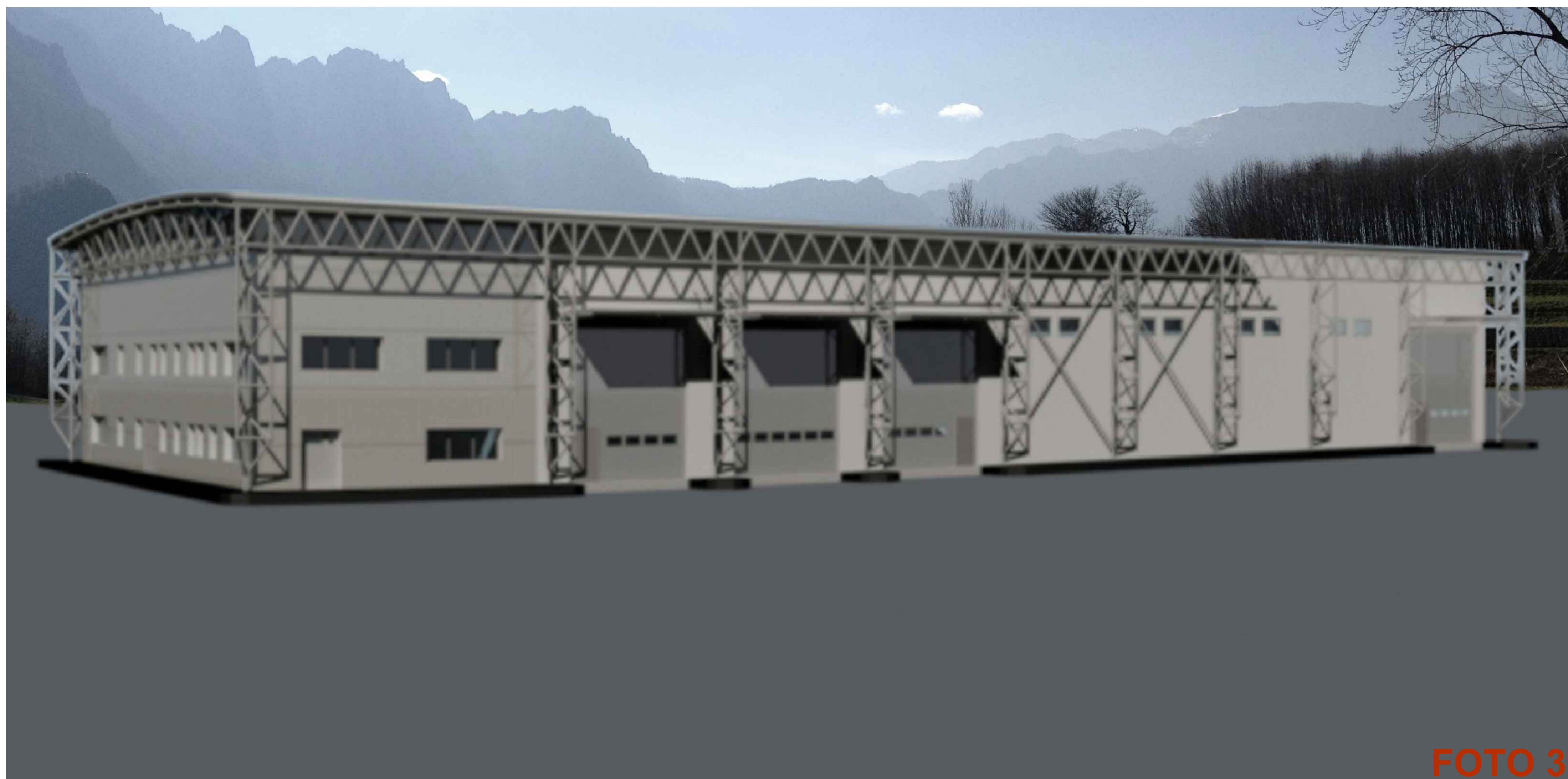


FOTO 3

SCHIZZO PROSPETTICO

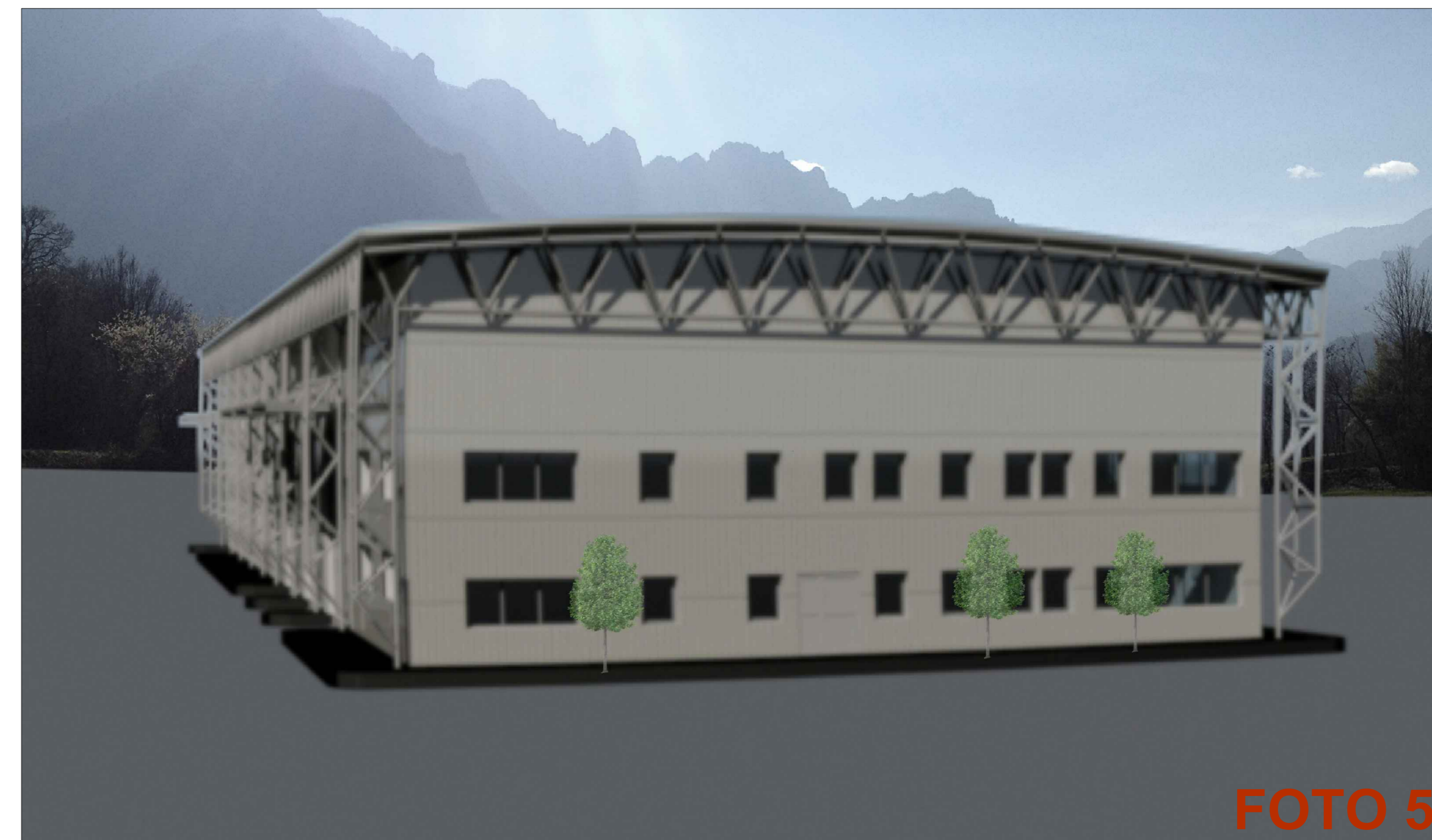
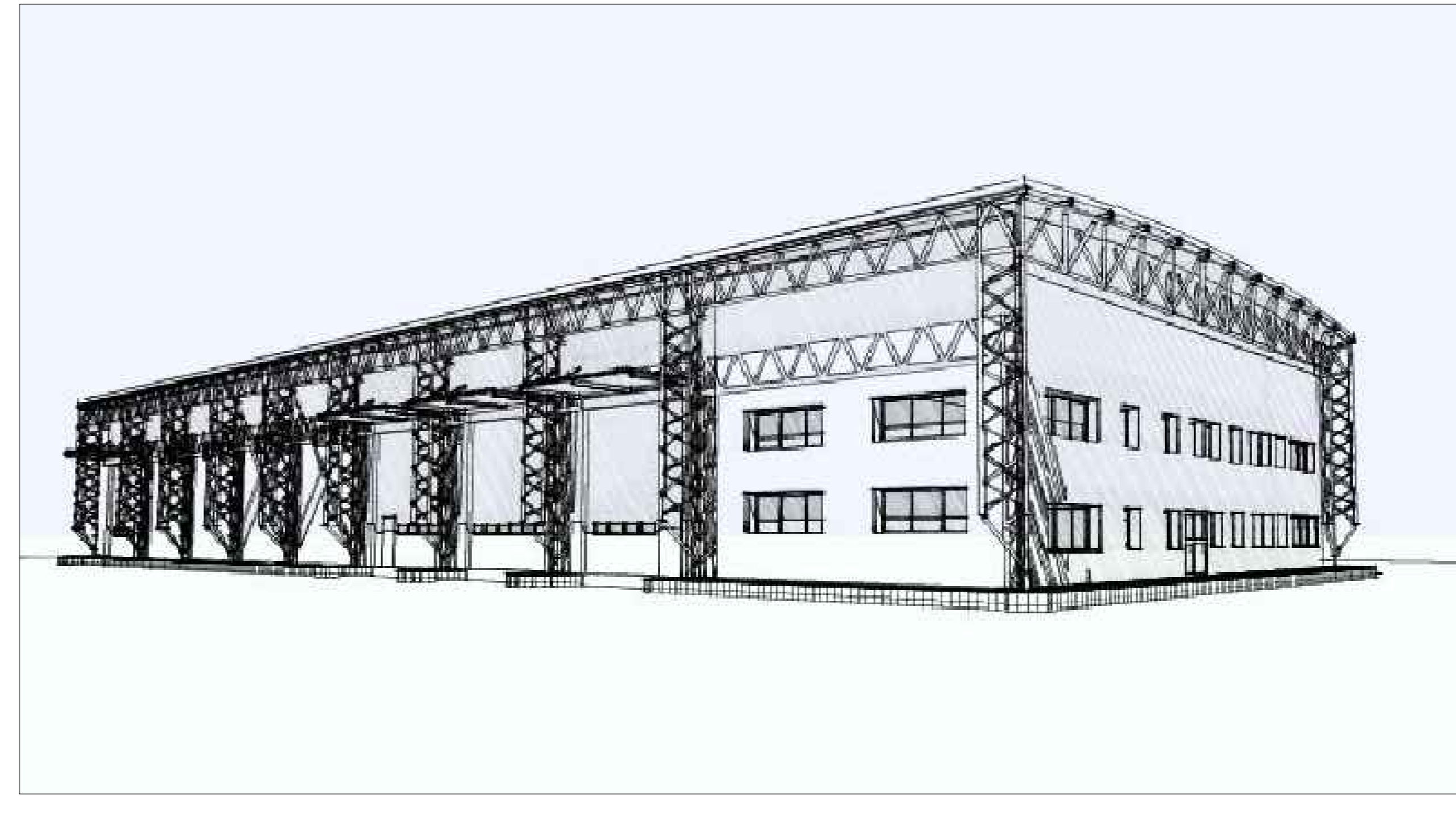
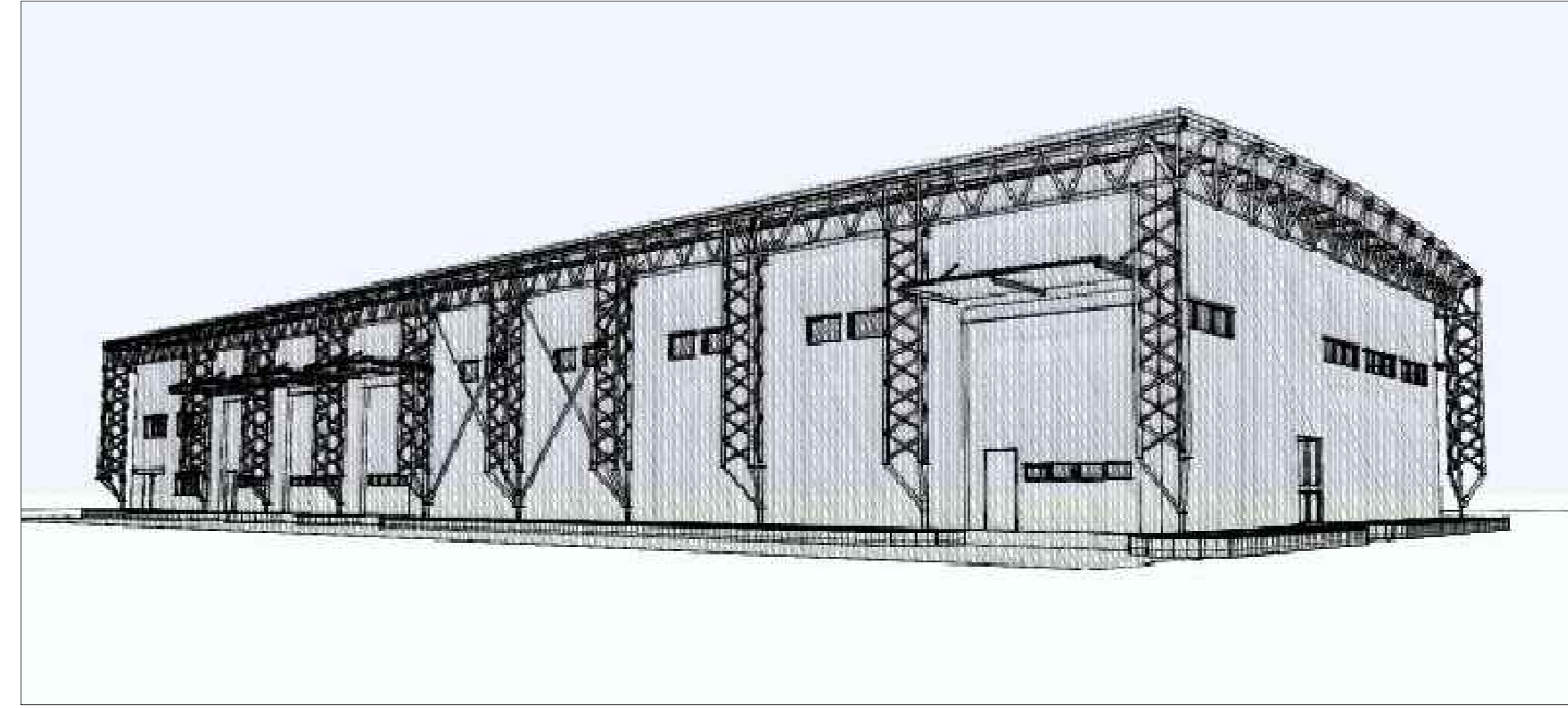


FOTO 5

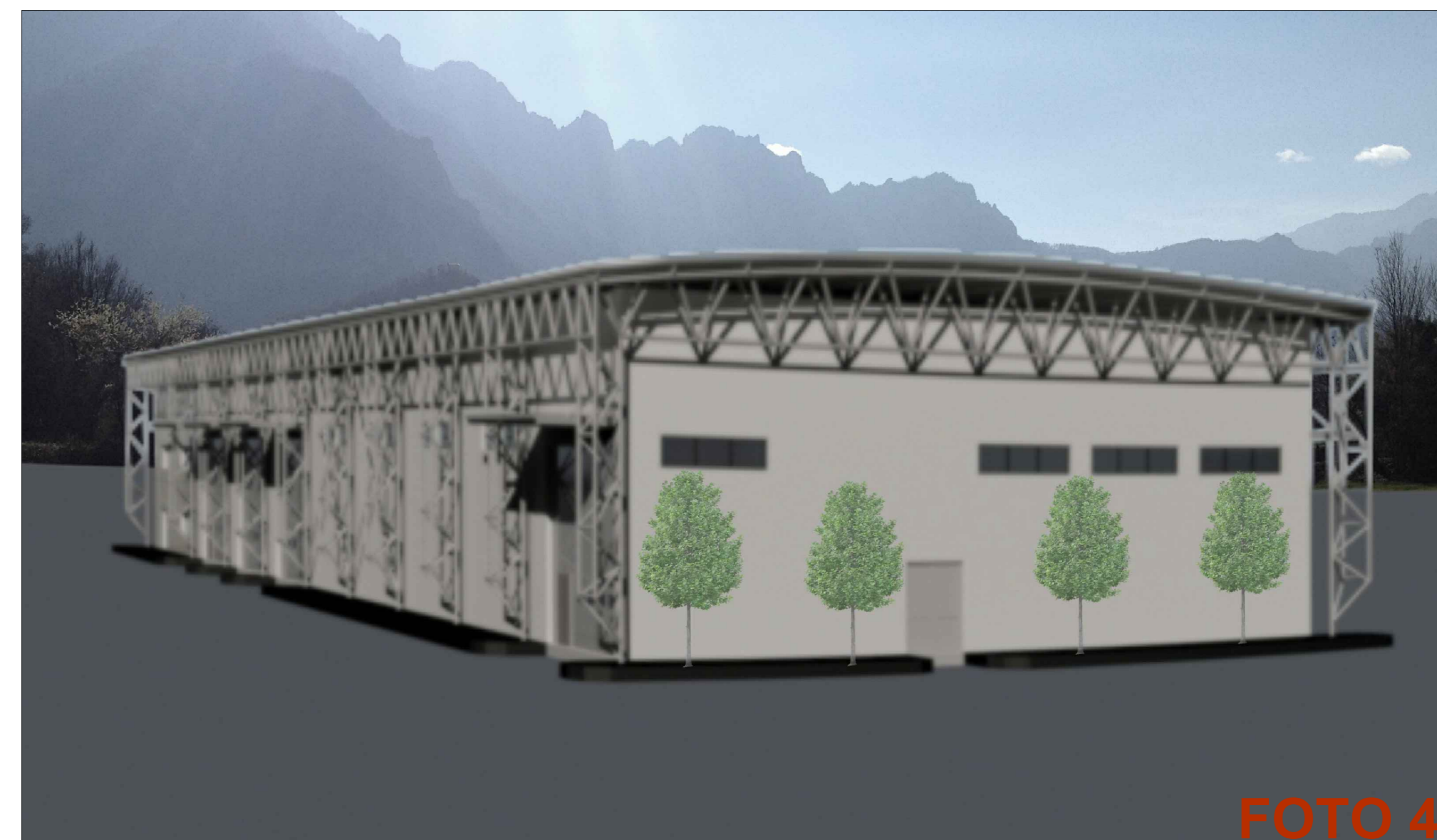
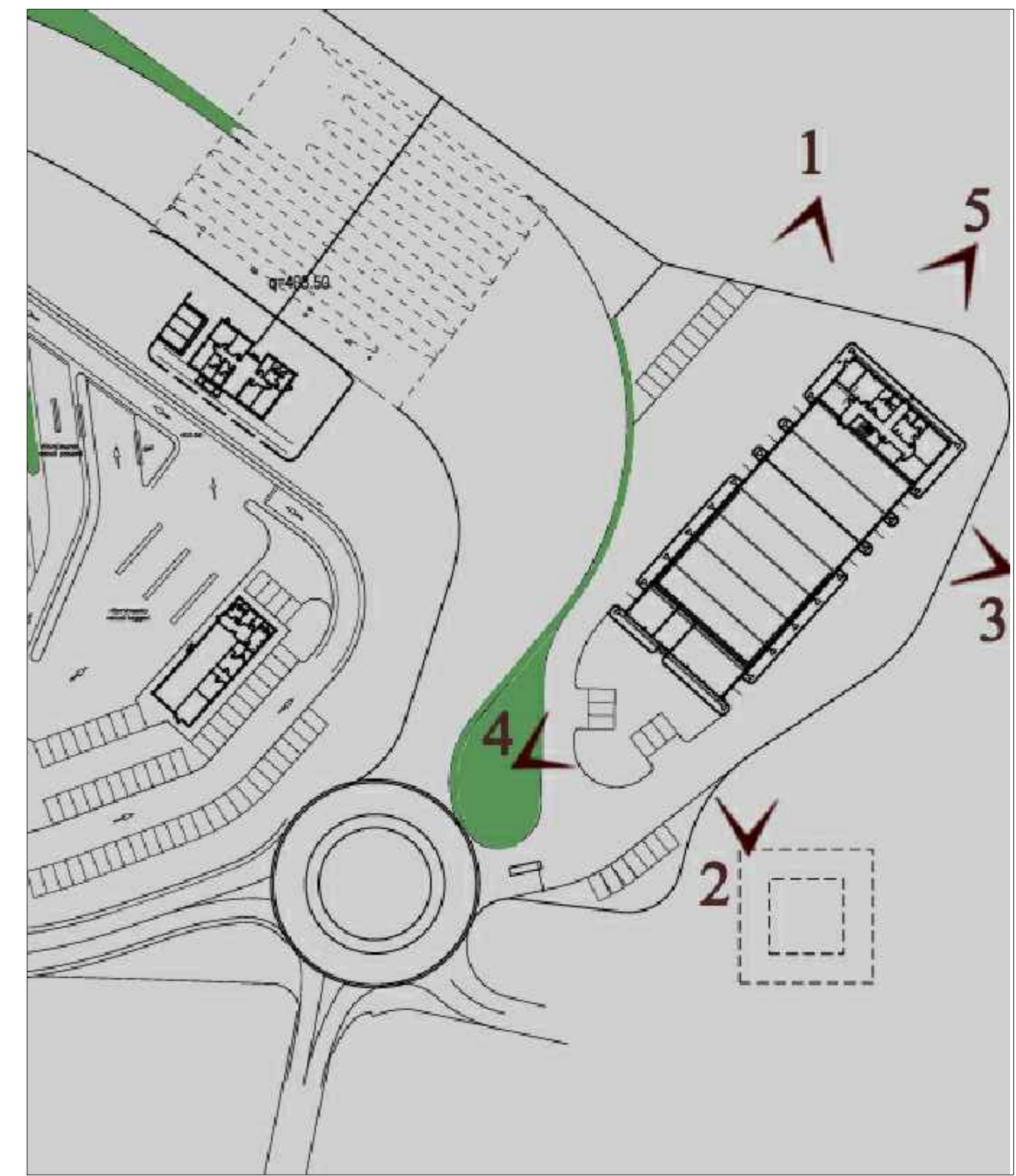




FOTO 4

INQUADRAMENTO




 Autostrada Brescia Verona Vicenza Padova SpA  
 Via Flavio Gioia 71 - 37135 Verona  
 Tel. 0465772222 Fax 0465200011 Corrente Postale 460041 www.autospid.it  
 AREA COSTRUZIONI AUTOSTRADALI


 RINA  
 CERTIFICAZIONE  
 ISO 9001:2008

**AUTOSTRADA VALDASTICO  
 A31 NORD**  
**1° LOTTO**  
**Piovene Rocchette - Valle dell'Astico**

**PROGETTO DEFINITIVO**

COMMITTENTE: **AUTOSTRADA** S.p.A. AREA COSTRUZIONI AUTOSTRADALI  
 CAPO COMMITTENTE PER LA PROGETTAZIONE: **Ing. Gianluigi Costantini**

PRESTATORE DI SERVIZI: **CONSORZIO RAETIA**  
 RESPONSABILE DELLA PROIEZIONE: **Ing. Alberto Scattolon**  
 TECNICO: **Ing. Alberto Scattolon**

ELABORATO: **EDIFICI E STRUTTURE A CORREDO**  
**EDIFICIO SERVIZI INVERNALI PEDEMONTE**  
**ARCHITETTONICO**  
**RENDER**

Progressivo: **09\_04\_01\_004\_02**

Rev.	Data	Descrizione	Redazione	Controllo	Approvazione	ESCALA
01		PRIMA EMISSIONE	ING. RAETIA	ING. RAETIA	ING. RAETIA	1:500
02		MODIFICAZIONE DELLO SCHEMATICO	ING. RAETIA	ING. RAETIA	ING. RAETIA	1:500
03		RECESSIONE OSSERVAZIONI	ING. RAETIA	ING. RAETIA	ING. RAETIA	1:500

NOME FILE: J16L1\_09\_04\_01\_004\_0101\_0101\_0101\_0101\_02.dwg  
 DI: PROJ. DI: RAETIA  
 J16L1\_09\_04\_01\_004\_0101\_0101\_02