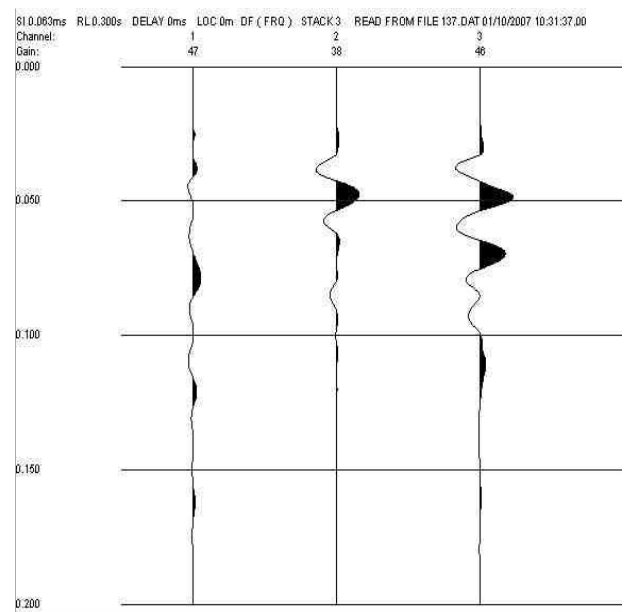
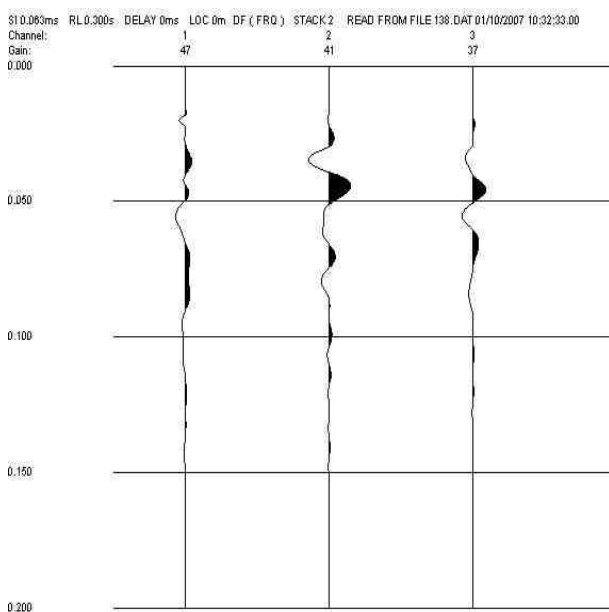
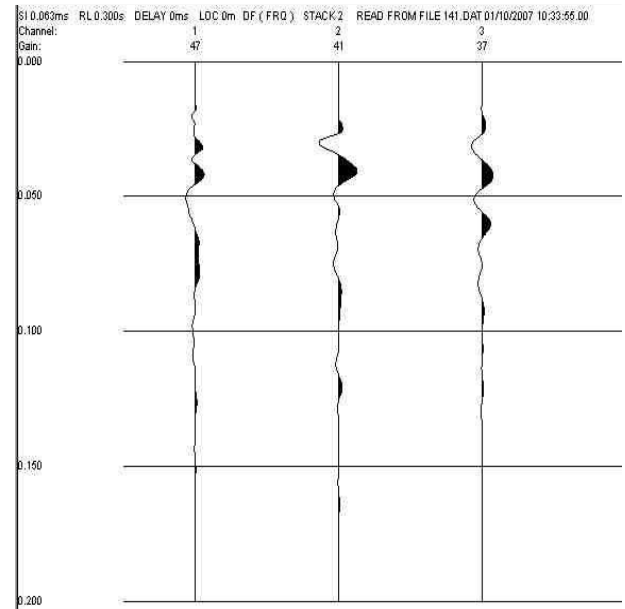
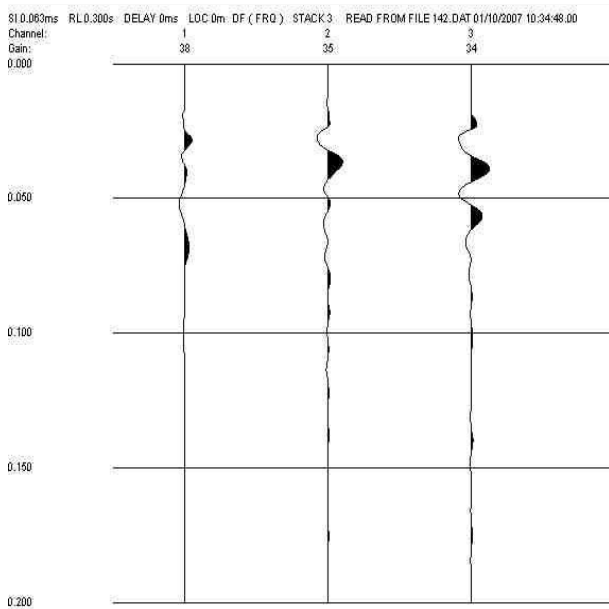
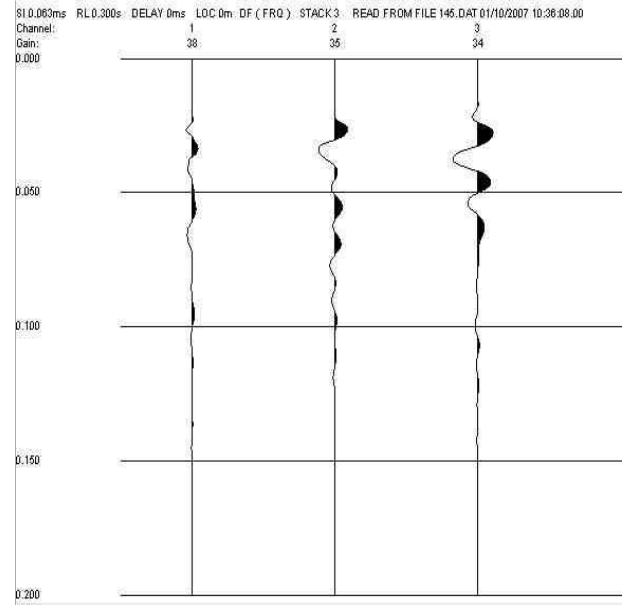
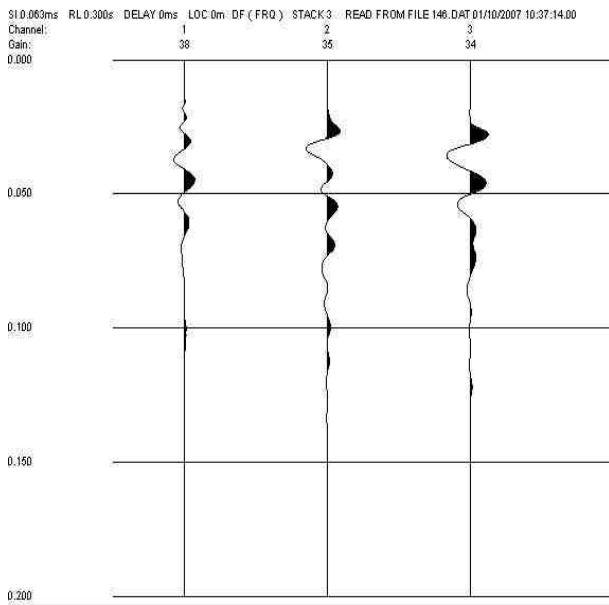
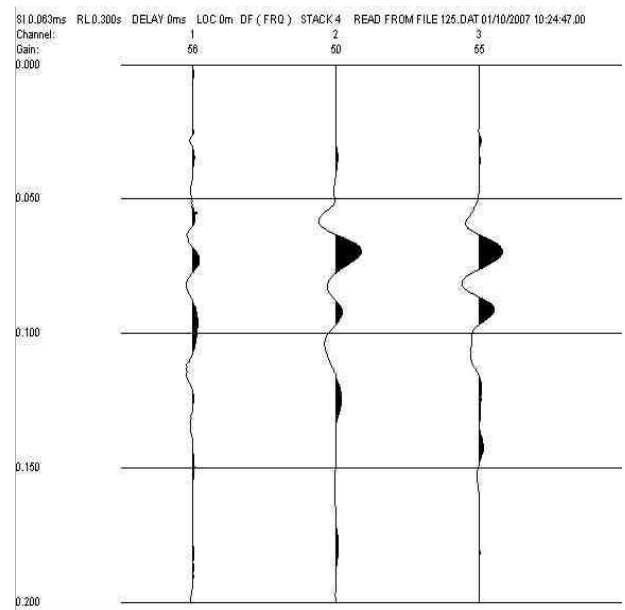
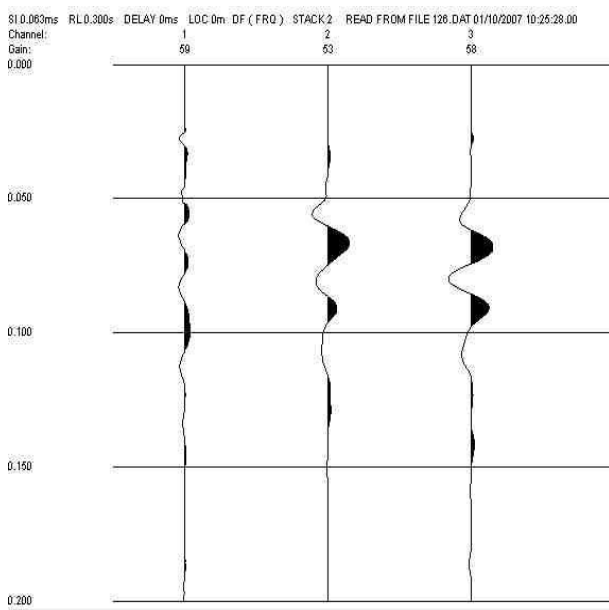
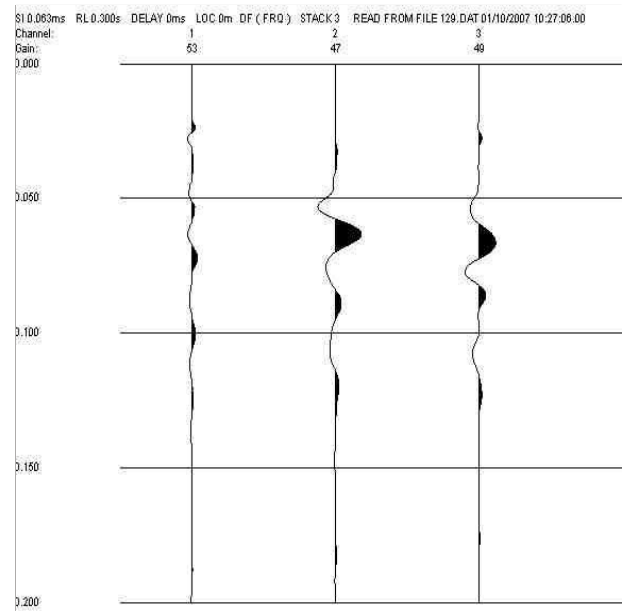
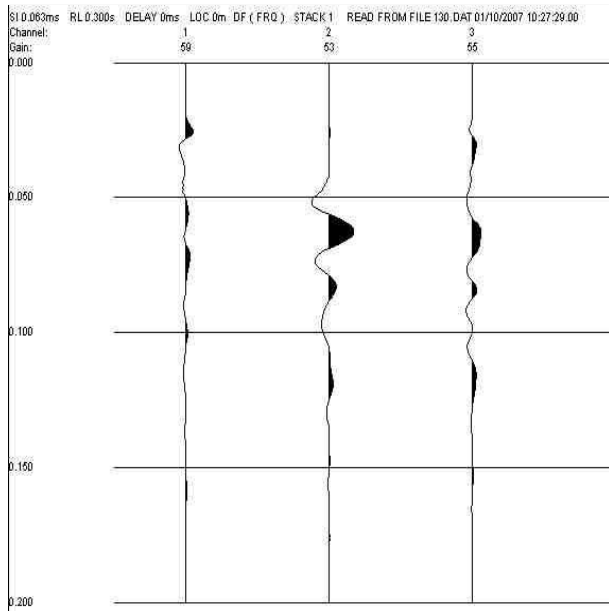
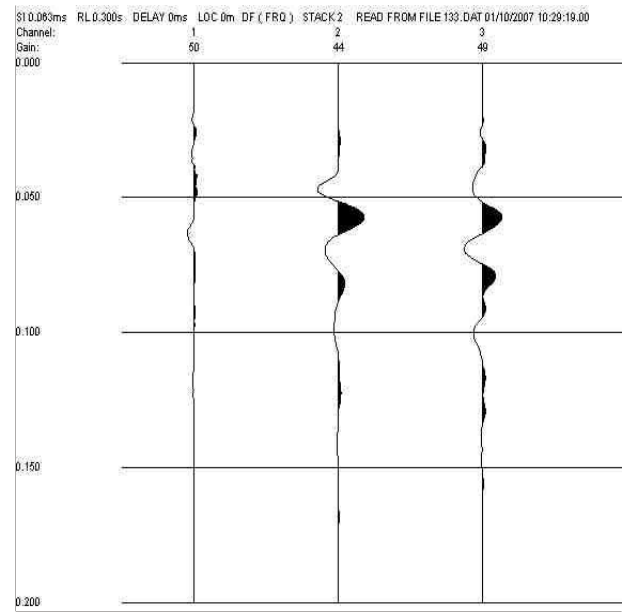
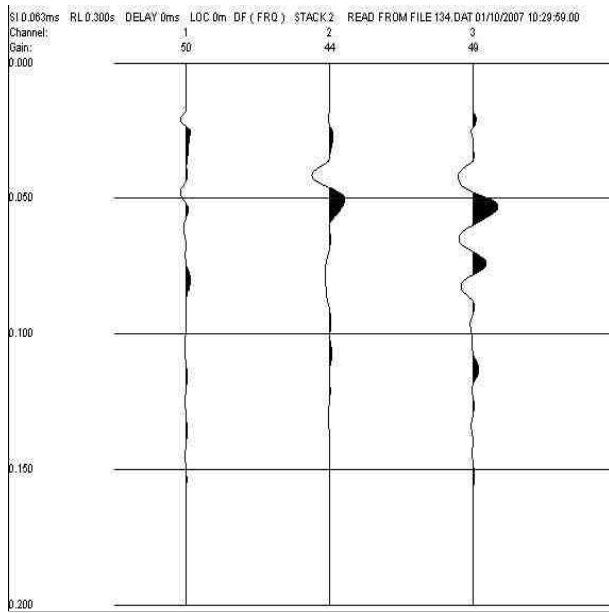


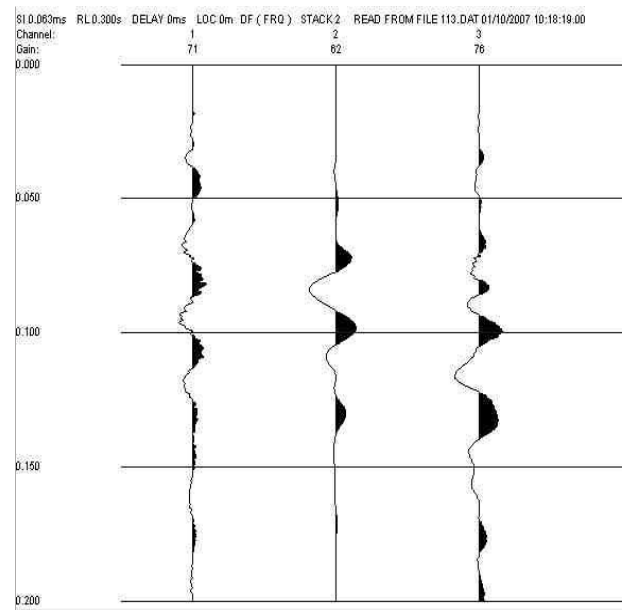
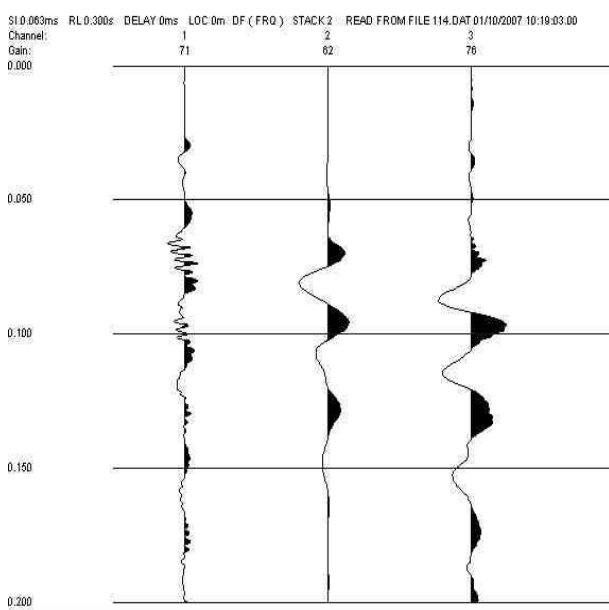
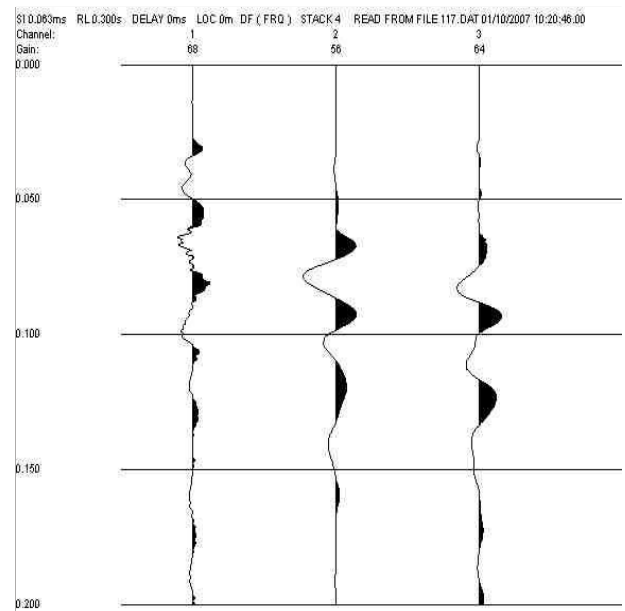
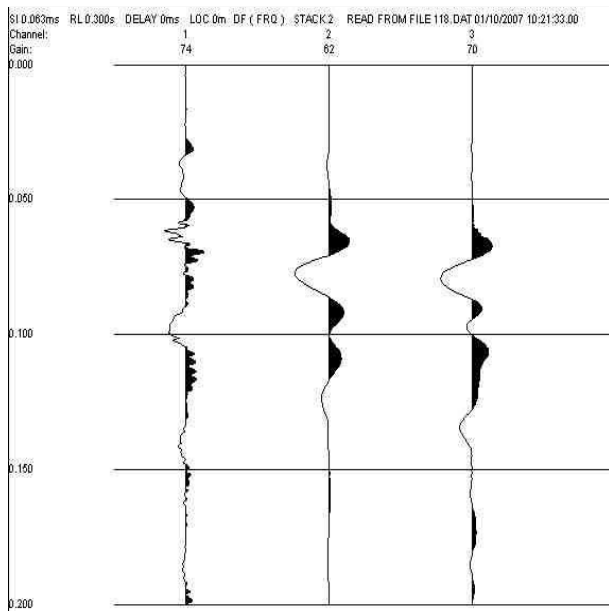
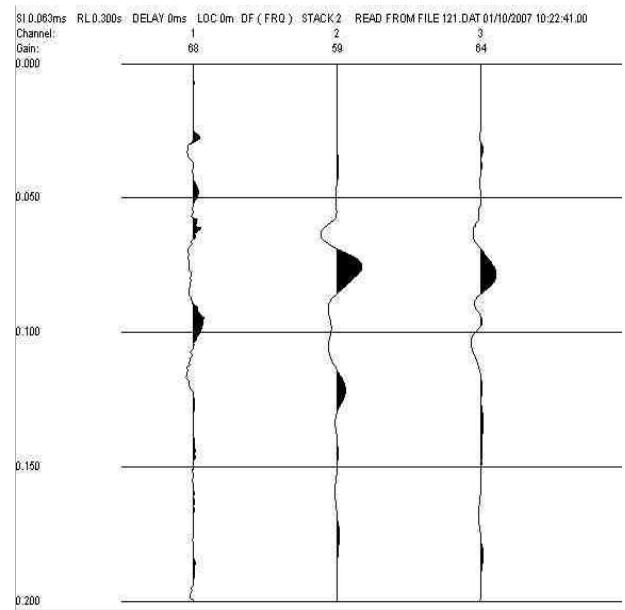
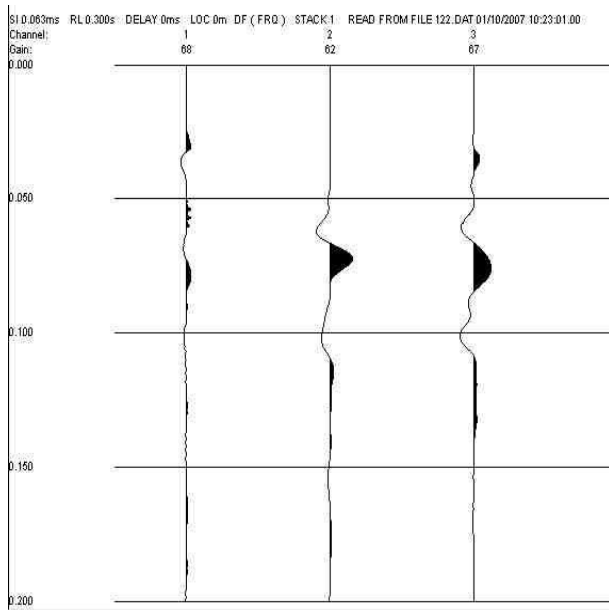
### Registrazioni onde SH



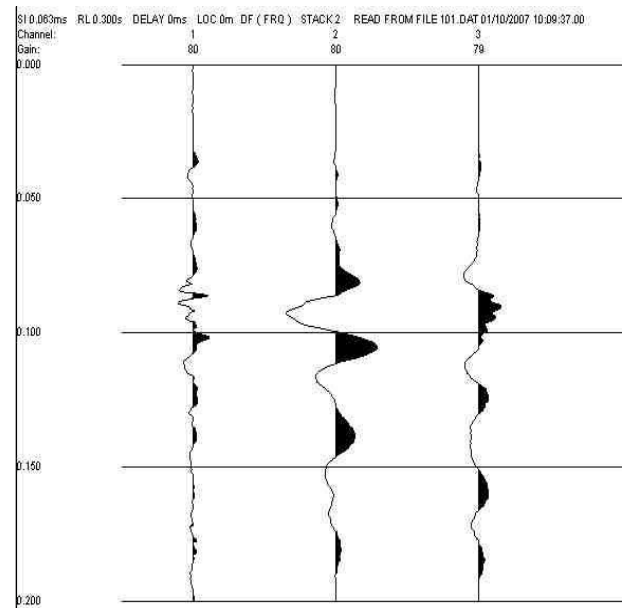
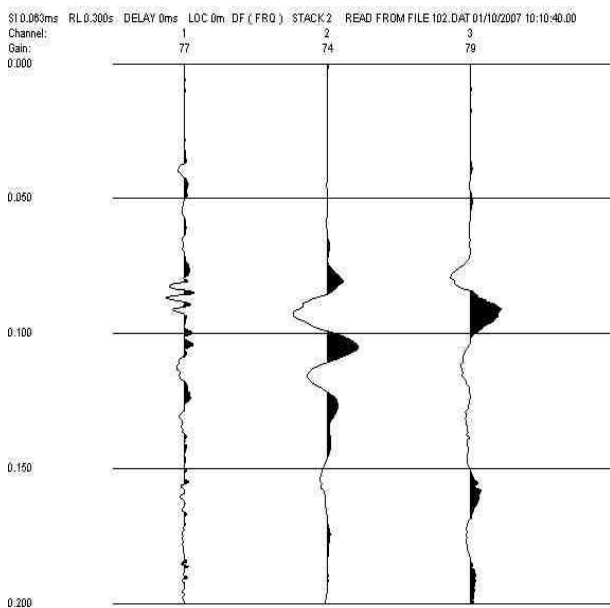
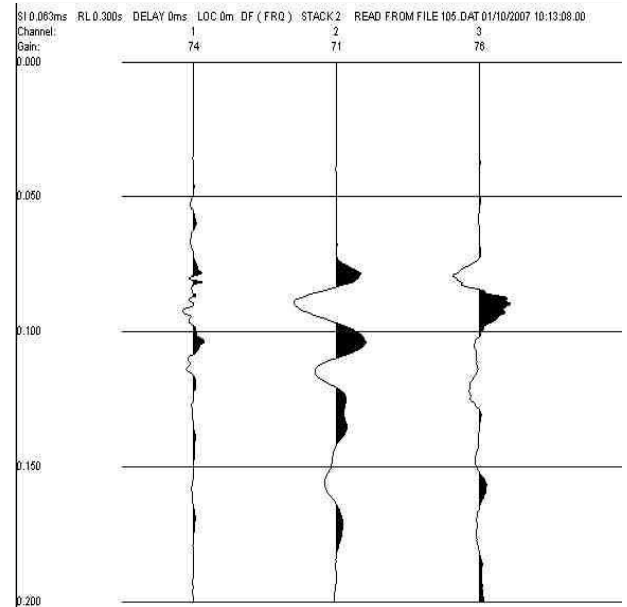
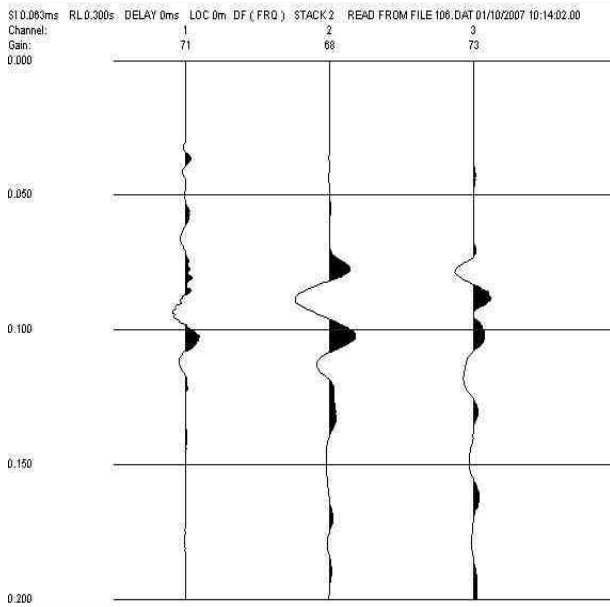
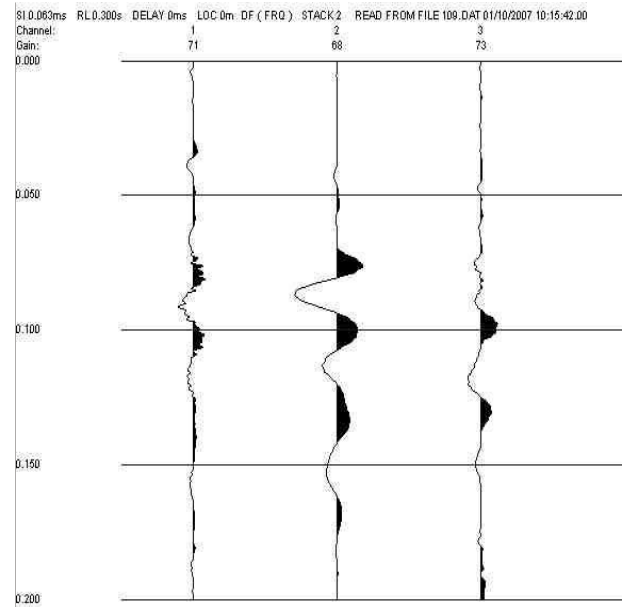
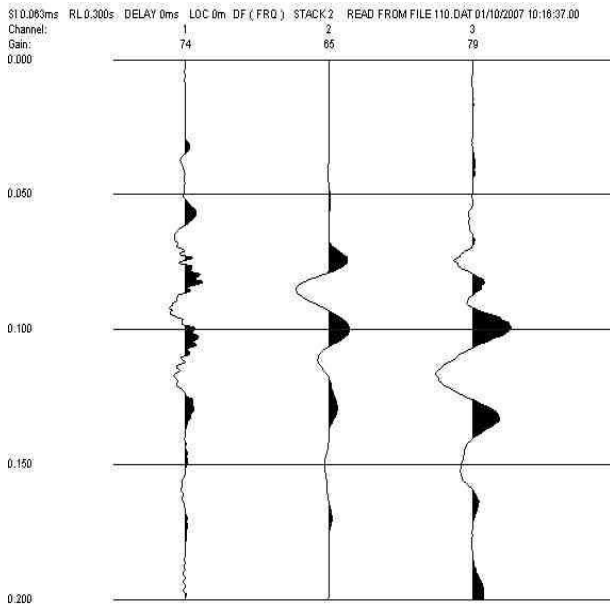
### Registrazioni onde SH



### Registrazioni onde SH

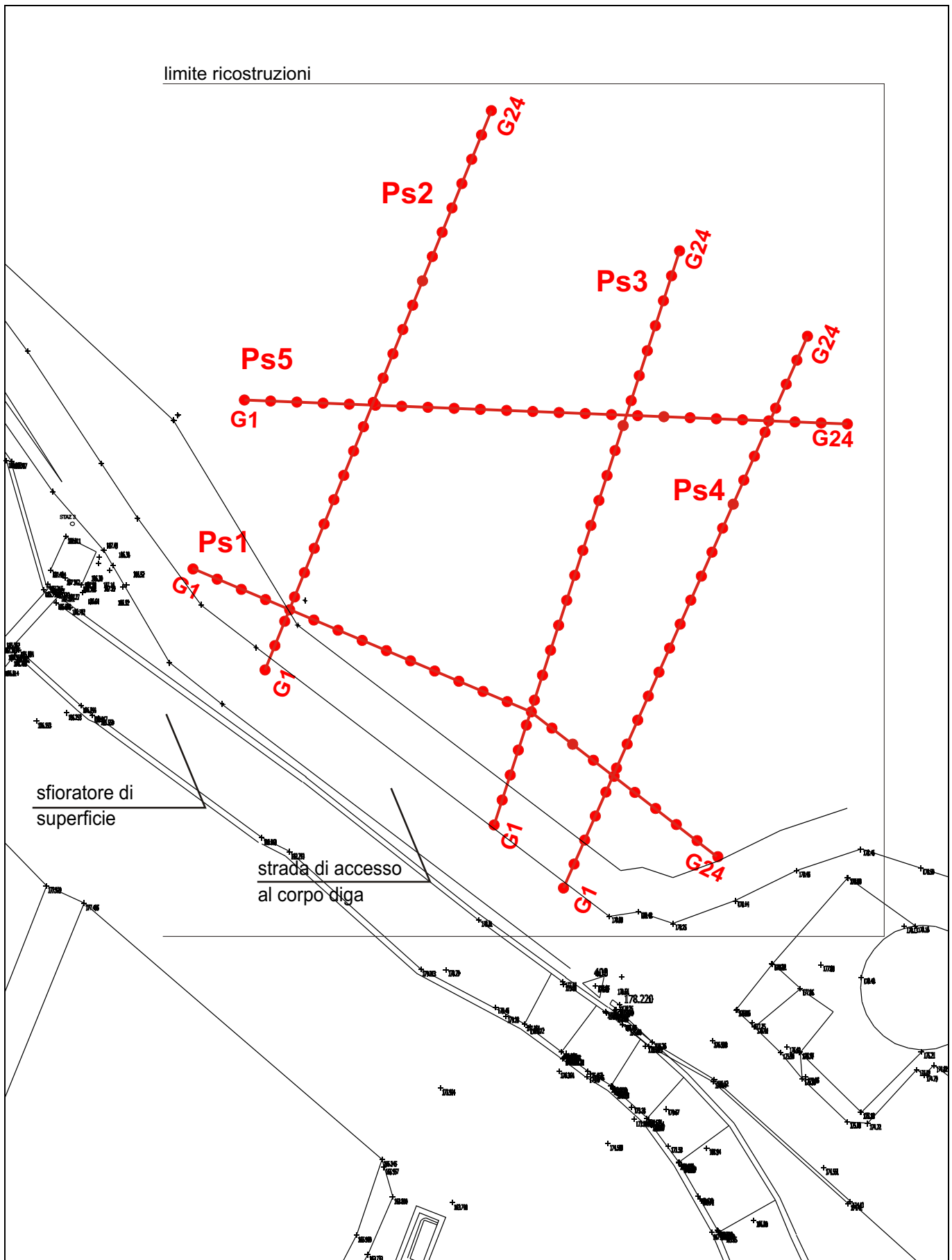


### Registrazioni onde SH






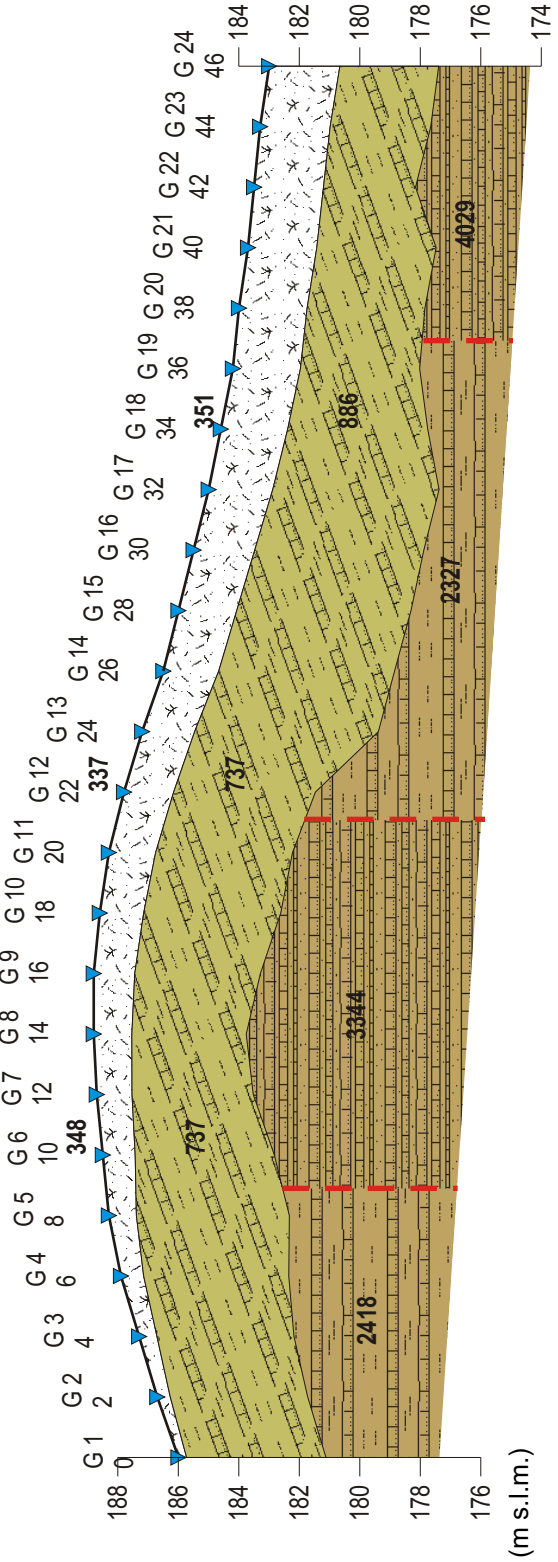
# Ubicazione Profili di sismica a rifrazione

Scala 1:400



# Profilo di sismica a Rifrazione Ps1

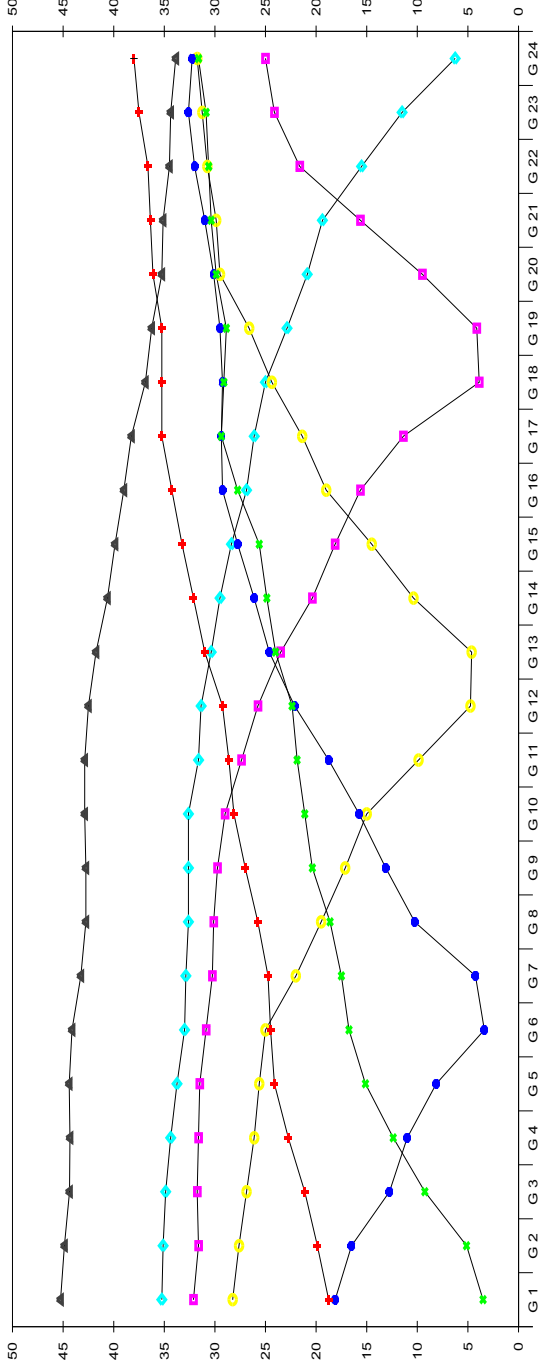
-  Materiali di copertura
-  Alterazione di Pietraforte
-  Pietraforte



(m s.l.m.)

Scala orizzontale 1:250  
Scala verticale 1:250

## Dromocrone

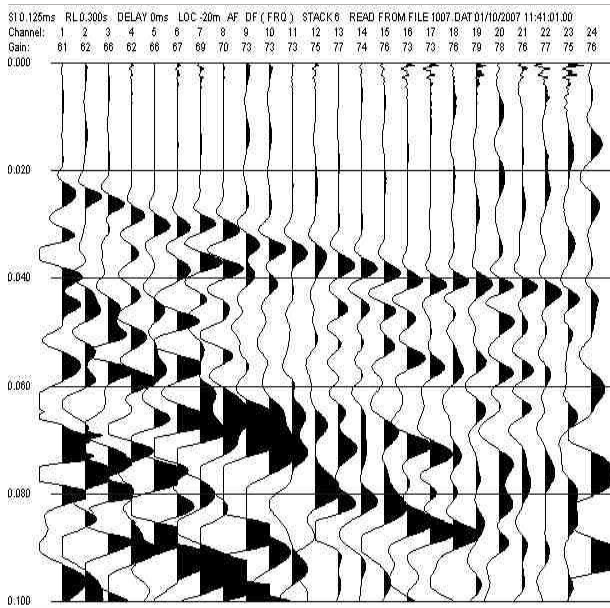


## Dati Ps1

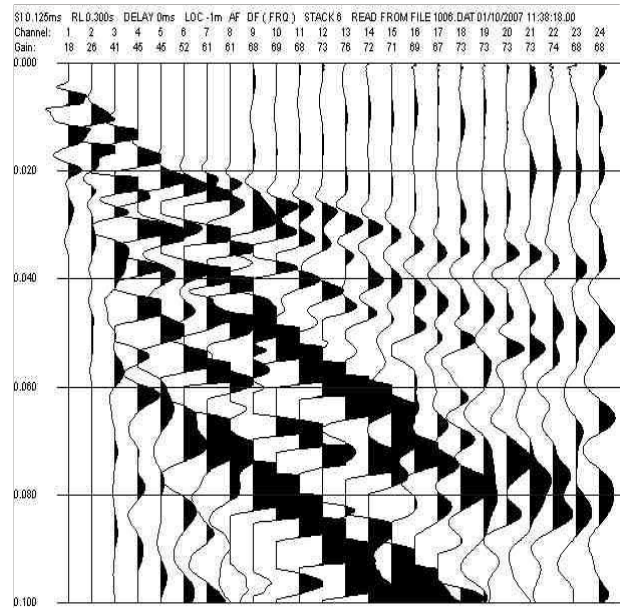
Geo. N°	ShotA ms	ShotB ms	ShotC ms	ShotD ms	ShotE ms	ShotF ms	ShotG ms
1	18.75	3.50	18.12	28.25	32.12	35.25	45.25
2	19.87	5.12	16.50	27.62	31.62	35.12	44.87
3	21.12	9.25	12.75	26.87	31.75	34.87	44.37
4	22.75	12.37	11.00	26.12	31.62	34.37	44.32
5	24.12	15.12	8.12	25.62	31.50	33.75	44.40
6	24.50	16.75	3.38	25.00	30.87	33.00	44.12
7	24.75	17.50	4.25	22.00	30.25	32.87	43.25
8	25.75	18.62	10.25	19.50	30.12	32.62	42.75
9	27.00	20.37	13.12	17.12	29.75	32.62	42.75
10	28.12	21.12	15.75	15.00	29.00	32.62	42.87
11	28.62	21.87	18.75	9.88	27.37	31.62	42.87
12	29.25	22.37	22.12	4.75	25.75	31.37	42.50
13	31.00	24.00	24.62	4.62	23.50	30.37	41.75
14	32.12	24.87	26.12	10.37	20.37	29.50	40.62
15	33.25	25.62	27.75	14.50	18.12	28.37	39.87
16	34.25	27.75	29.25	19.00	15.62	26.87	39.00
17	35.25	29.37	29.37	21.37	11.37	26.12	38.25
18	35.25	29.12	29.25	24.37	3.88	25.00	36.87
19	35.25	28.87	29.50	26.62	4.12	22.87	36.25
20	36.12	29.87	30.12	29.50	9.50	20.87	35.25
21	36.37	30.37	31.00	29.87	15.62	19.37	35.12
22	36.62	30.62	32.00	30.75	21.62	15.50	34.50
23	37.50	30.87	32.62	31.25	24.12	11.50	34.37
24	38.00	31.62	32.25	31.75	25.00	6.25	33.87

Geo. N°	Dist. m	Q m slm	V1 m/sec.	Z1 m	Q1 m slm	V2 m/sec.	Z2 m	H2 m	Q2 m slm	V3 m/sec.
1	0	186.0	285	0.3	185.7	737	4.6	4.9	181.1	2418
2	2	186.7	306	0.4	186.3	737	4.5	5.0	181.7	2418
3	4	187.3	327	0.6	186.7	737	4.5	5.1	182.2	2418
4	6	187.9	348	0.8	187.1	737	4.8	5.5	182.4	2418
5	8	188.3	369	0.9	187.4	737	5.1	6.0	182.3	2418
6	10	188.5	348	1.1	187.4	737	4.6	5.7	182.8	3344
7	12	188.7	328	1.2	187.5	737	4.0	5.2	183.5	3344
8	14	188.8	307	1.3	187.5	737	3.8	5.0	183.8	3344
9	16	188.8	320	1.4	187.4	737	4.2	5.5	183.3	3344
10	18	188.6	333	1.5	187.1	737	4.5	6.0	182.6	3344
11	20	188.3	335	1.5	186.8	737	4.5	6.1	182.2	3344
12	22	187.8	337	1.6	186.2	737	4.7	6.3	181.5	2327
13	24	187.2	339	1.7	185.5	886	6.1	7.8	179.4	2327
14	26	186.5	340	1.8	184.7	886	5.8	7.6	178.9	2327
15	28	186.0	342	1.9	184.1	886	5.8	7.7	178.3	2327
16	30	185.5	344	2.0	183.5	886	5.6	7.6	177.9	2327
17	32	185.0	347	2.1	182.9	886	5.5	7.6	177.4	2327
18	34	184.6	351	2.2	182.4	886	4.6	6.8	177.8	2327
19	36	184.2	354	2.2	182.0	886	3.9	6.2	178.0	2327
20	38	184.0	358	2.3	181.7	886	3.9	6.1	177.9	2327
21	40	183.7	361	2.3	181.4	886	3.9	6.2	177.5	4029
22	42	183.5	323	2.3	181.2	886	3.0	5.3	178.2	4029
23	44	183.3	323	2.3	181.0	886	3.3	5.6	177.7	4029
24	46	183.0	323	2.3	180.7	886	3.3	5.6	177.4	4029

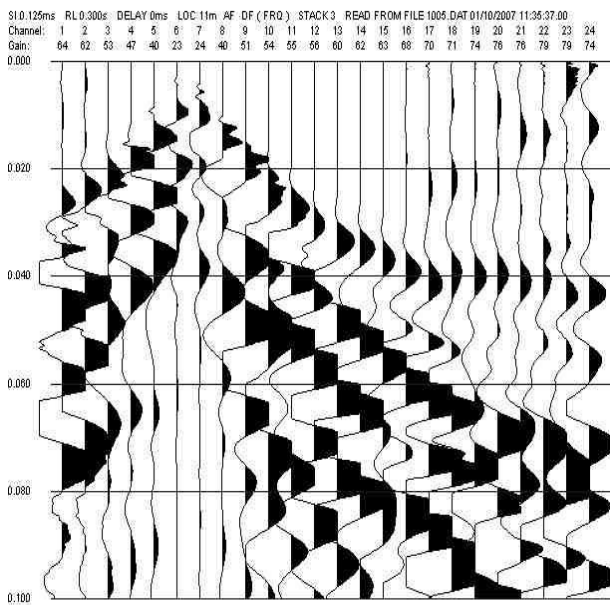
A Esterno sinistro



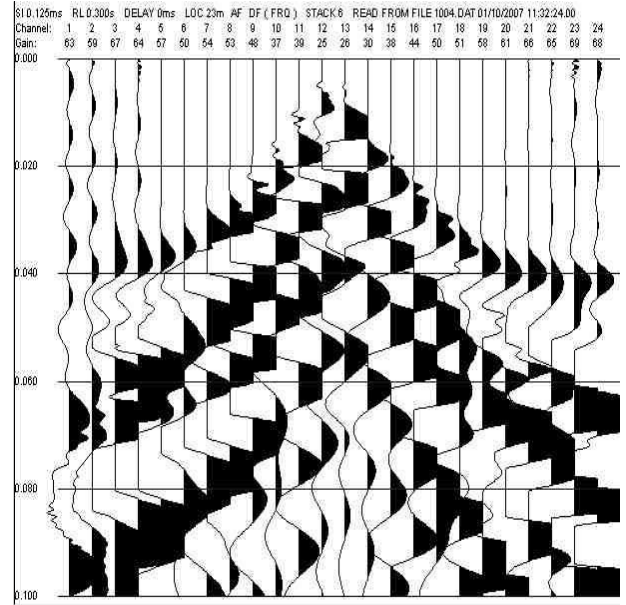
B Estremo sinistro



C Intermedio sinistro

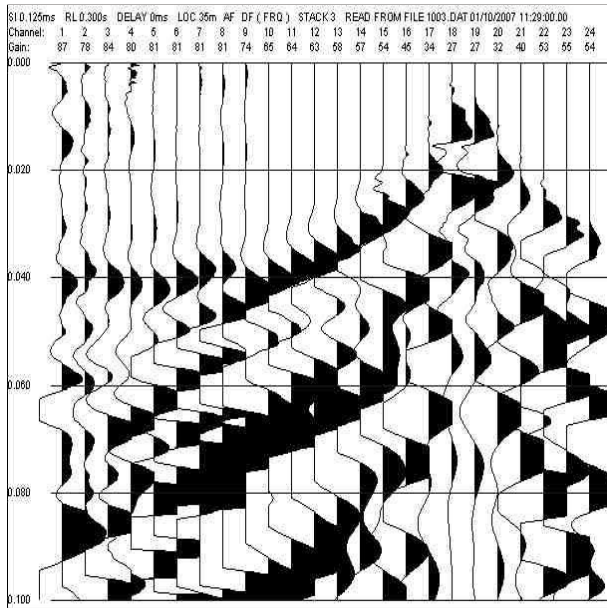


D Estremo destro

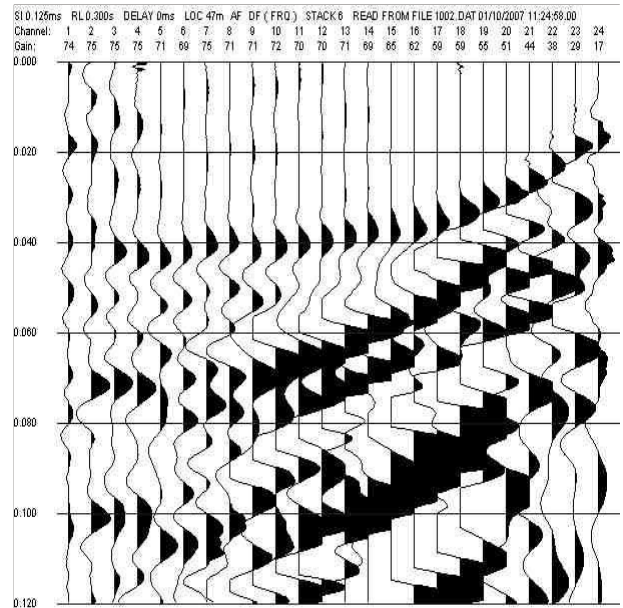




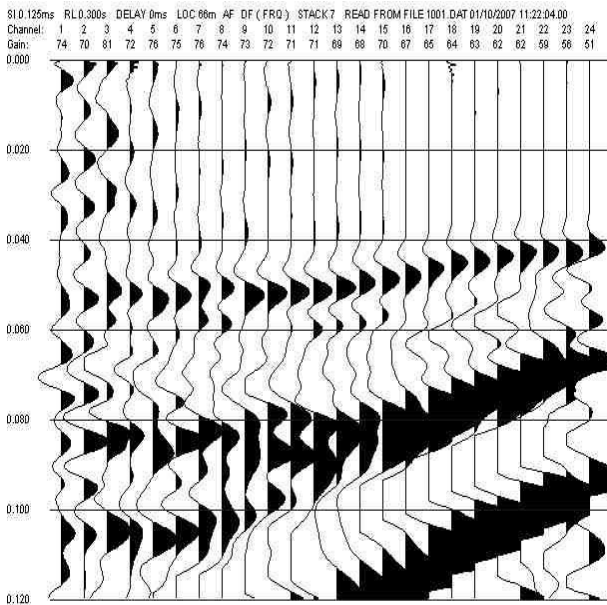
E Intermedio destro



F Esterno destro

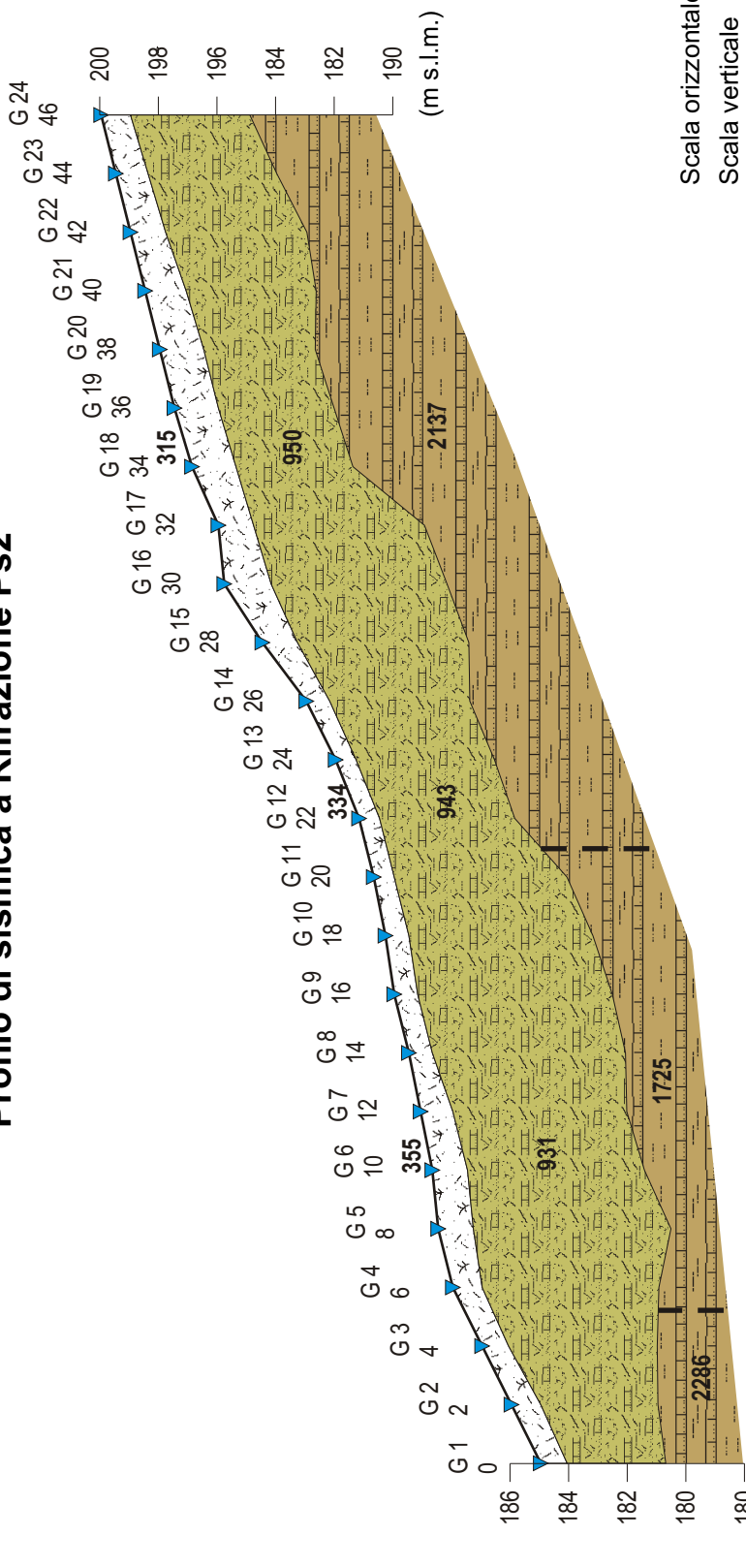


G Esterno destro



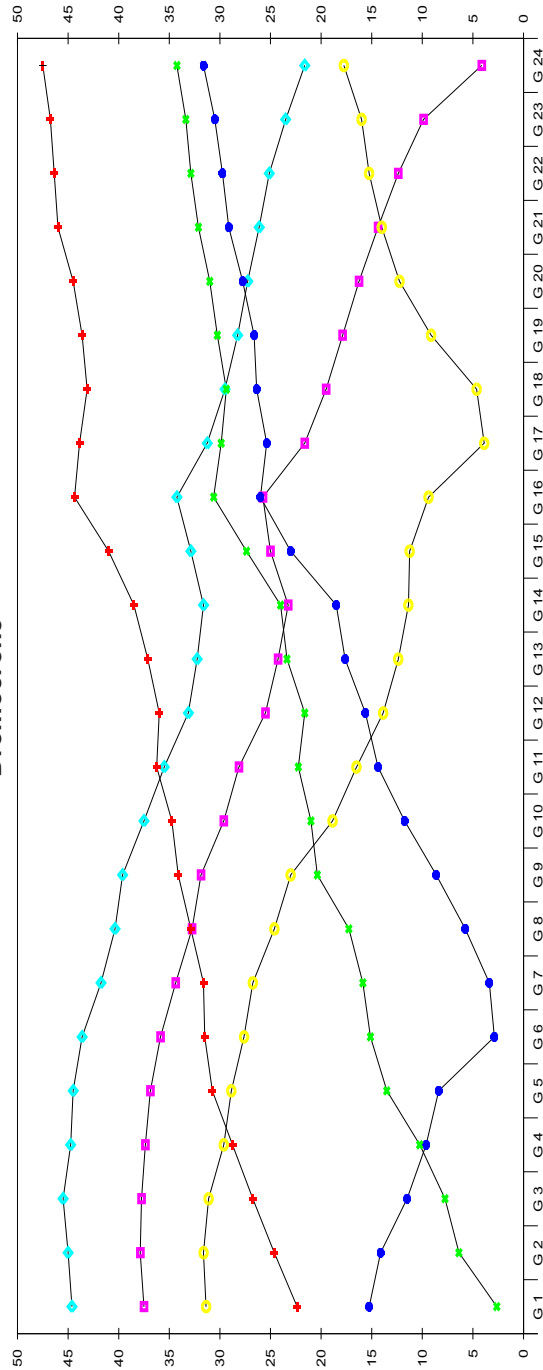
# Profilo di sismica a Rifrazione Ps2

- Materiali di copertura
- Alterazione di Pietraforte
- Pietraforte



Scala orizzontale 1:250  
Scala verticale 1:250

## Dromocrone



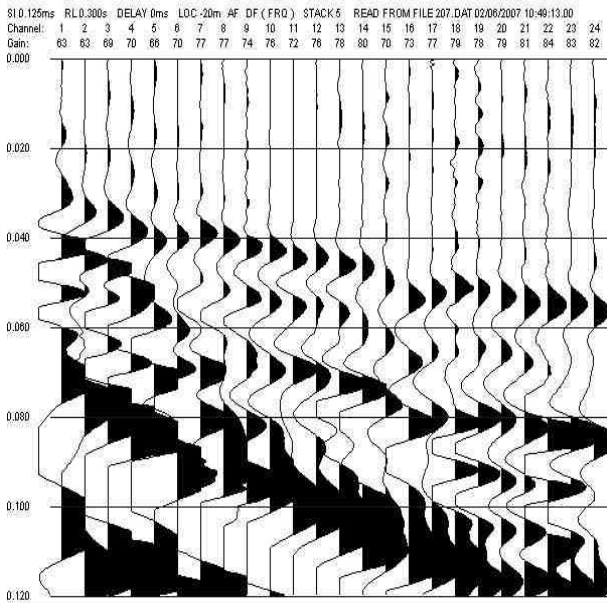
## Dati Ps2

Geo. N°	ShotA ms	ShotB ms	ShotC ms	ShotD ms	ShotE ms	ShotF ms
1	22.37	2.62	15.25	31.37	37.50	44.62
2	24.62	6.38	14.12	31.62	37.87	45.00
3	26.75	7.75	11.50	31.12	37.75	45.50
4	28.75	10.25	9.62	29.62	37.37	44.75
5	30.75	13.50	8.38	28.87	36.87	44.50
6	31.50	15.12	2.88	27.62	35.87	43.62
7	31.62	15.87	3.38	26.75	34.37	41.75
8	32.87	17.25	5.75	24.62	32.75	40.37
9	34.12	20.37	8.62	23.00	31.87	39.62
10	34.75	21.00	11.75	18.87	29.62	37.50
11	36.25	22.25	14.37	16.50	28.12	35.50
12	36.00	21.62	15.62	13.87	25.50	33.12
13	37.12	23.37	17.62	12.37	24.25	32.25
14	38.50	24.00	18.50	11.37	23.25	31.62
15	41.00	27.37	23.00	11.25	25.00	32.87
16	44.37	30.62	26.00	9.38	25.75	34.25
17	43.87	29.87	25.37	3.88	21.62	31.25
18	43.12	29.37	26.37	4.62	19.50	29.50
19	43.62	30.25	26.62	9.12	17.87	28.25
20	44.50	31.00	27.75	12.25	16.25	27.25
21	46.00	32.12	29.12	14.00	14.37	26.12
22	46.37	32.87	29.75	15.25	12.37	25.12
23	46.75	33.37	30.50	16.00	9.88	23.50
24	47.50	34.25	31.62	17.75	4.12	21.62

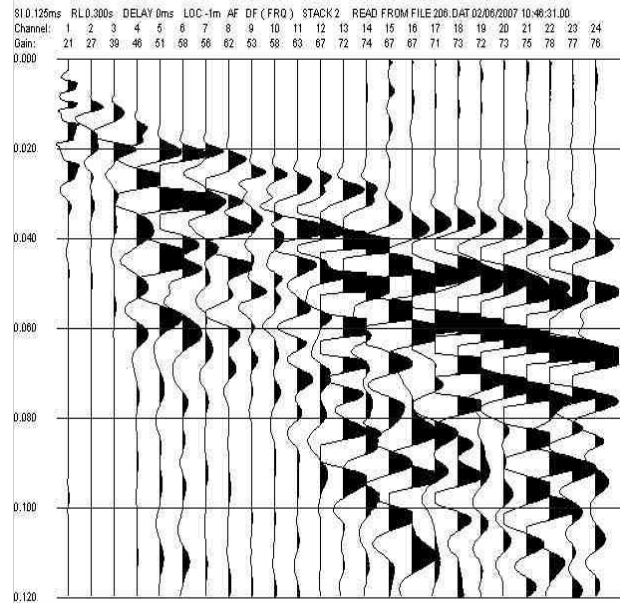
Geo. N°	Dist. m	Q m slm	V1 m/sec.	Z1 m	Q1 m slm	V2 m/sec.	Z2 m	H2 m	Q2 m slm	V3 m/sec.
1	0	185.0	380	0.9	184.1	931	3.4	4.3	180.7	2286
2	2	186.0	374	1.0	185.0	931	4.0	5.0	181.0	2286
3	4	187.0	369	0.9	186.1	931	5.1	6.0	181.0	2286
4	6	188.0	364	1.0	187.0	931	6.0	7.0	181.0	1725
5	8	188.5	358	1.2	187.3	931	6.7	7.9	180.6	1725
6	10	188.7	355	1.2	187.5	931	6.0	7.2	181.5	1725
7	12	189.1	351	1.1	188.0	931	5.9	7.0	182.1	1725
8	14	189.5	348	0.8	188.7	943	6.6	7.4	182.1	1725
9	16	190.0	344	0.8	189.2	943	6.6	7.4	182.6	1725
10	18	190.3	341	0.8	189.5	943	6.3	7.1	183.2	1725
11	20	190.7	337	0.7	190.0	943	5.9	6.6	184.1	1725
12	22	191.2	334	0.7	190.5	943	4.6	5.3	185.9	2137
13	24	192.0	330	0.7	191.3	943	4.7	5.4	186.6	2137
14	26	193.0	327	0.8	192.2	943	4.8	5.6	187.4	2137
15	28	194.5	323	1.2	193.3	950	5.8	7.0	187.5	2137
16	30	195.8	320	1.6	194.2	950	6.0	7.6	188.2	2137
17	32	196.0	318	1.2	194.8	950	5.8	7.0	189.0	2137
18	34	196.9	315	1.5	195.4	950	4.0	5.5	191.4	2137
19	36	197.5	313	1.5	196.0	1092	3.9	5.4	192.1	2137
20	38	198.0	310	1.5	196.5	1092	3.8	5.3	192.7	2137
21	40	198.5	308	1.4	197.1	1092	4.4	5.8	192.7	2137
22	42	199.0	305	1.2	197.8	1092	4.8	6.0	193.0	2137
23	44	199.5	303	1.1	198.4	1092	4.4	5.5	194.0	2137
24	46	200.0	303	1.0	199.0	1092	4.1	5.1	194.9	2137

# Registrazioni Ps2

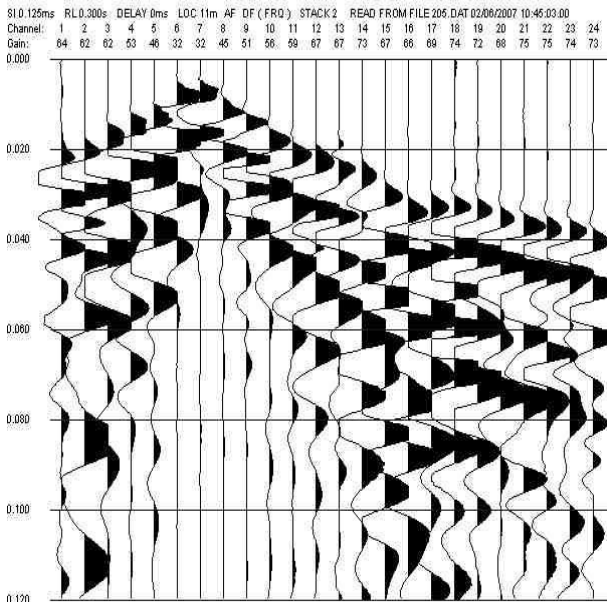
**A Esterno sinistro**



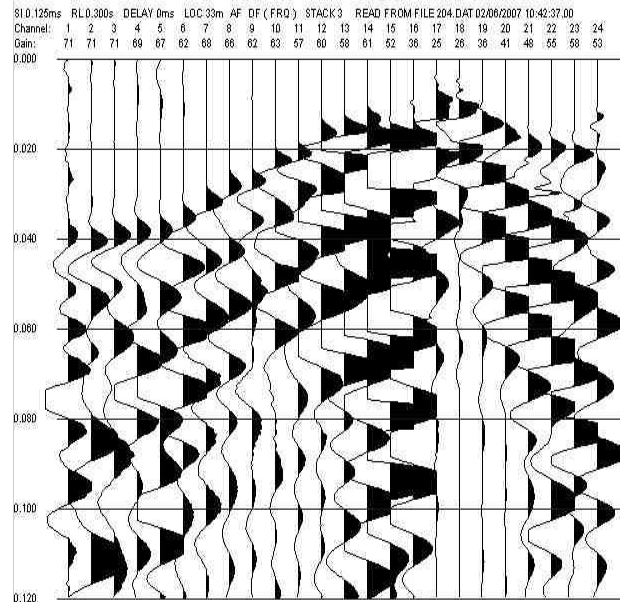
**B Estremo sinistro**



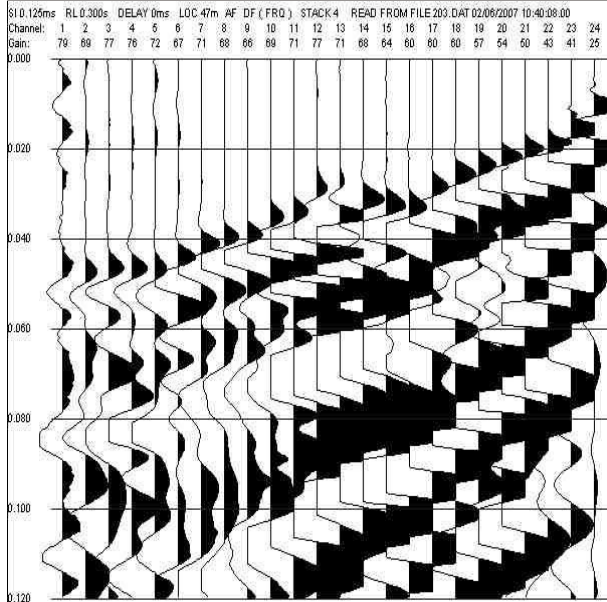
**C Centrale**



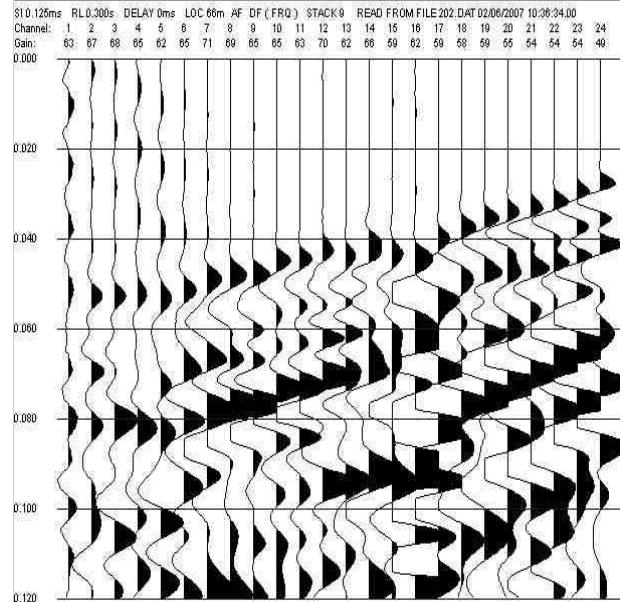
**D Centrale**



**E Estremo destro**

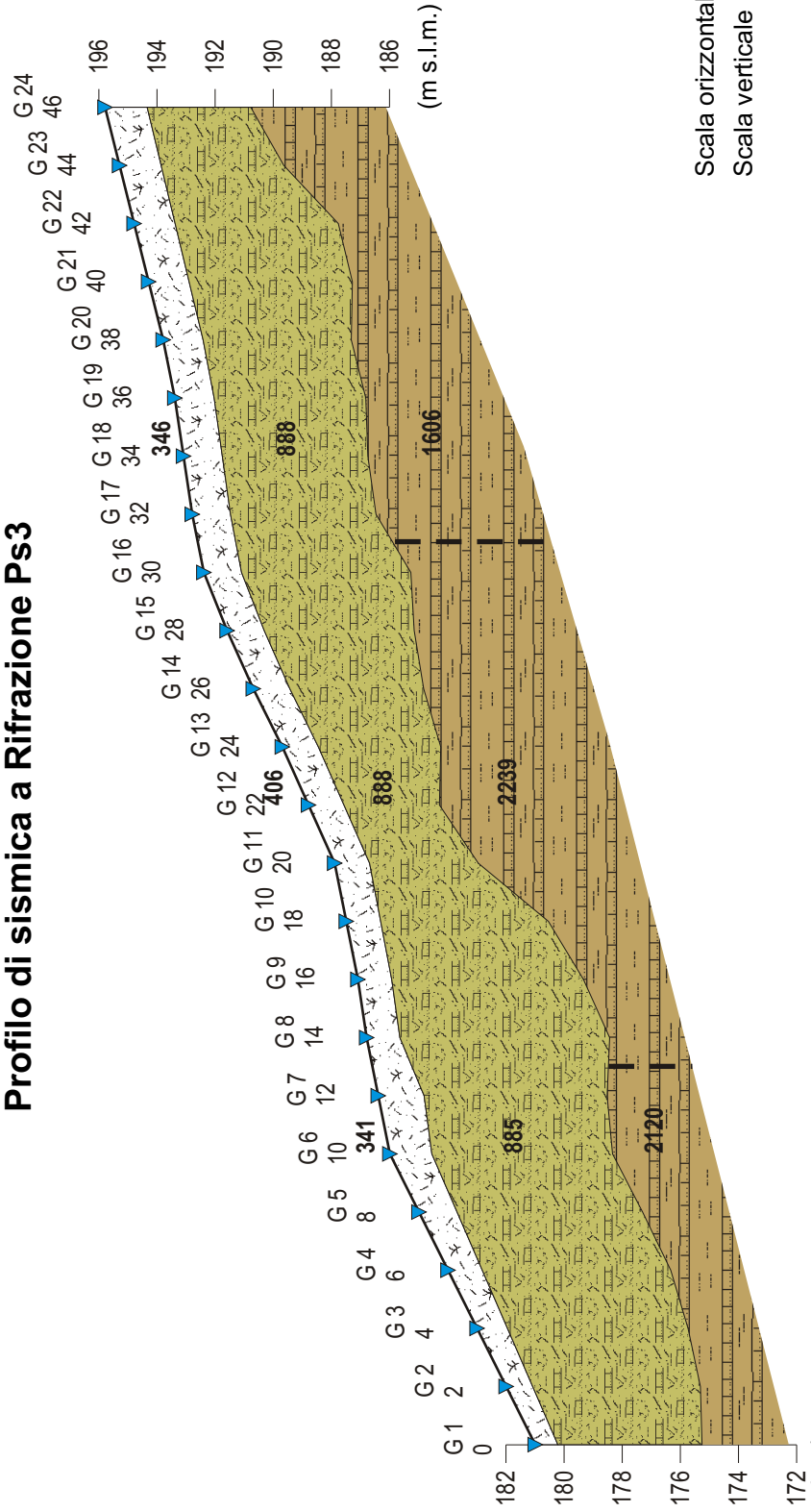


**E Esterno destro**

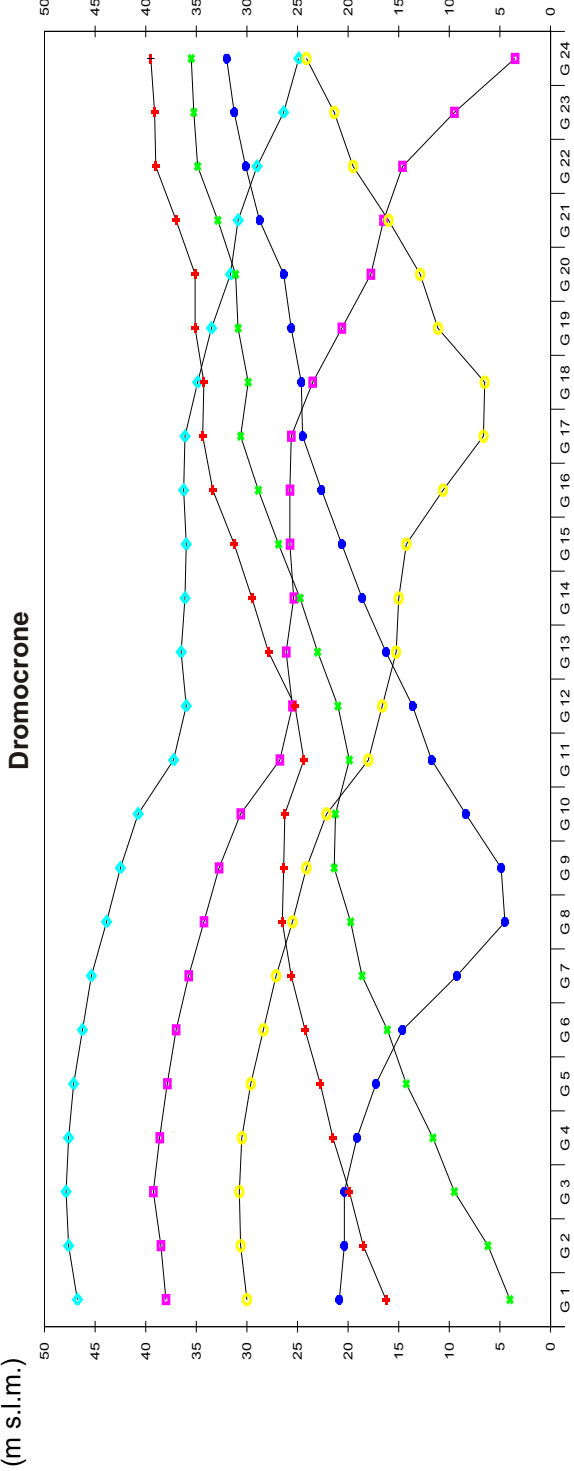


# Profilo di sismica a Rifrazione Ps3

- Materiali di copertura
- Alterazione di Pietraforte
- Pietraforte



Scala orizzontale 1:250  
Scala verticale 1:250



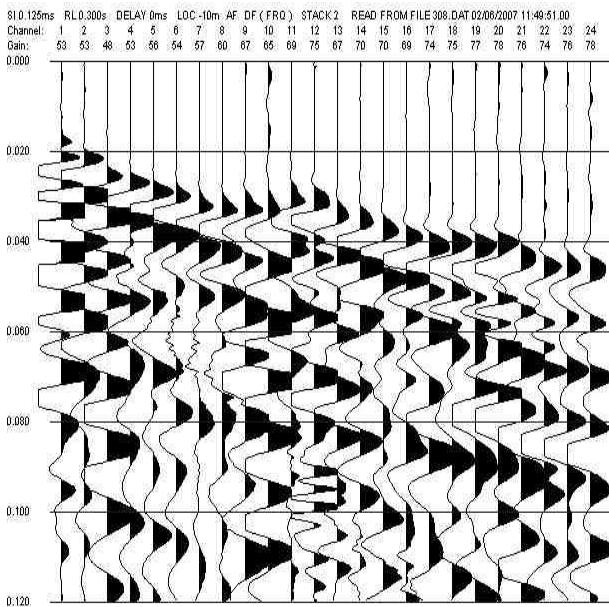
## Dati Ps3

Geo. N°	ShotA ms	ShotB ms	ShotC ms	ShotD ms	ShotE ms	ShotF ms
1	16.25	4.00	20.87	30.00	38.00	46.75
2	18.50	6.18	20.37	30.62	38.50	47.62
3	19.87	9.50	20.37	30.75	39.25	47.87
4	21.50	11.62	19.12	30.50	38.62	47.62
5	22.75	14.25	17.25	29.62	37.87	47.12
6	24.25	16.12	14.62	28.37	37.00	46.25
7	25.62	18.62	9.25	27.12	35.75	45.37
8	26.50	19.75	4.50	25.50	34.25	43.87
9	26.37	21.37	4.88	24.12	32.75	42.50
10	26.25	21.25	8.38	22.12	30.62	40.75
11	24.37	19.87	11.75	18.00	26.75	37.25
12	25.25	21.00	13.62	16.62	25.50	36.00
13	27.87	23.00	16.25	15.25	26.12	36.50
14	29.50	24.75	18.62	15.00	25.37	36.12
15	31.25	26.87	20.62	14.25	25.75	36.00
16	33.37	28.87	22.62	10.62	25.75	36.25
17	34.37	30.62	24.50	6.62	25.62	36.12
18	34.25	29.87	24.62	6.50	23.50	34.87
19	35.12	30.87	25.62	11.12	20.62	33.50
20	35.12	31.12	26.37	12.87	17.75	31.62
21	37.00	32.87	28.75	16.00	16.50	30.87
22	39.00	34.87	30.12	19.50	14.62	29.00
23	39.12	35.25	31.25	21.38	9.50	26.37
24	39.50	35.50	32.00	24.12	3.50	24.87

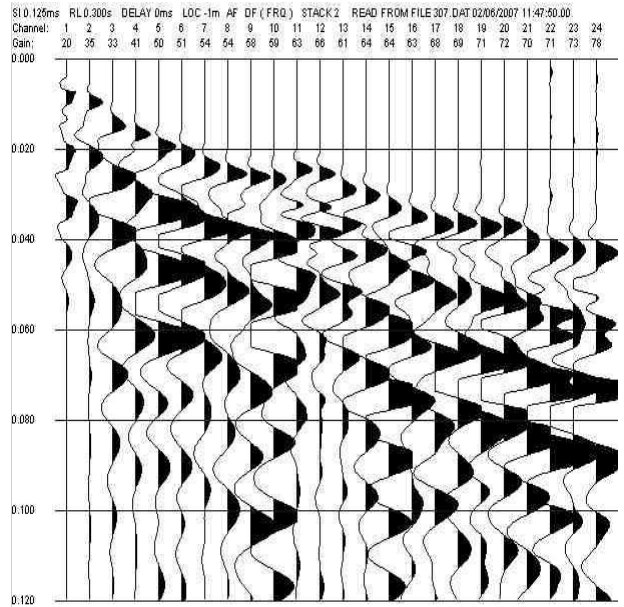
Geo. N°	Dist. m	Q m slm	V1 m/sec.	Z1 m	Q1 m slm	V2 m/sec.	Z2 m	H2 m	Q2 m slm	V3 m/sec.
1	0	181.0	367	0.8	180.2	885	5.0	5.7	175.3	2120
2	2	182.0	367	0.9	181.1	885	5.8	6.7	175.3	2120
3	4	183.0	367	1.0	182.0	885	6.2	7.3	175.7	2120
4	6	184.0	361	1.2	182.8	885	6.5	7.7	176.3	2120
5	8	185.0	350	1.3	183.7	885	6.4	7.7	177.3	2120
6	10	186.0	341	1.4	184.6	885	6.2	7.7	178.3	2120
7	12	186.4	358	1.6	184.8	885	6.3	7.9	178.5	2120
8	14	186.8	375	1.1	185.7	885	7.2	8.4	178.4	2239
9	16	187.1	391	1.2	185.9	888	6.6	7.8	179.3	2239
10	18	187.5	408	1.2	186.3	888	5.8	7.0	180.5	2239
11	20	187.9	425	1.2	186.7	888	3.7	4.9	183.0	2239
12	22	188.8	406	1.2	187.6	888	3.3	4.5	184.3	2239
13	24	189.7	388	1.2	188.5	888	4.2	5.4	184.3	2239
14	26	190.7	369	1.3	189.4	888	4.6	5.9	184.8	2239
15	28	191.6	350	1.3	190.3	888	5.2	6.4	185.2	2239
16	30	192.4	349	1.3	191.1	888	5.8	7.1	185.3	2239
17	32	192.8	347	1.3	191.5	888	5.0	6.3	186.5	1606
18	34	193.1	346	1.3	191.8	888	5.0	6.3	186.8	1606
19	36	193.4	345	1.4	192.0	888	5.2	6.6	186.8	1606
20	38	193.8	344	1.4	192.4	888	5.1	6.5	187.3	1606
21	40	194.3	342	1.4	192.9	888	5.6	7.0	187.3	1606
22	42	194.8	341	1.4	193.4	888	5.6	7.0	187.8	1606
23	44	195.3	341	1.4	193.9	888	4.2	5.6	189.7	1606
24	46	195.8	341	1.4	194.4	888	3.6	5.0	190.8	1606

# Registrazioni Ps3

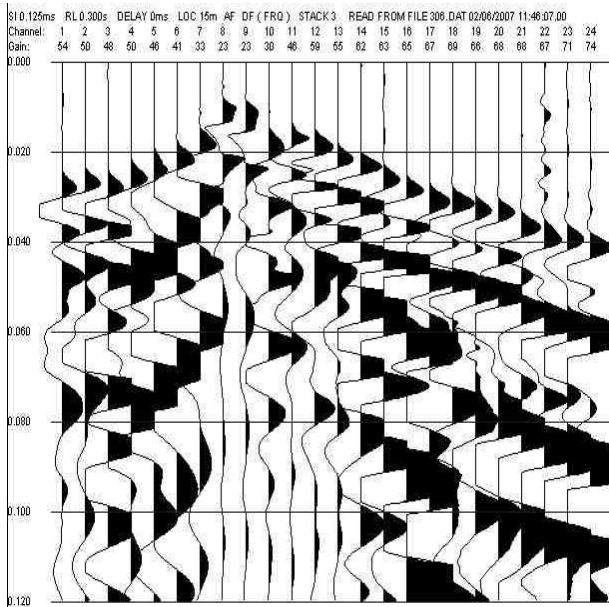
**A Esterno sinistro**



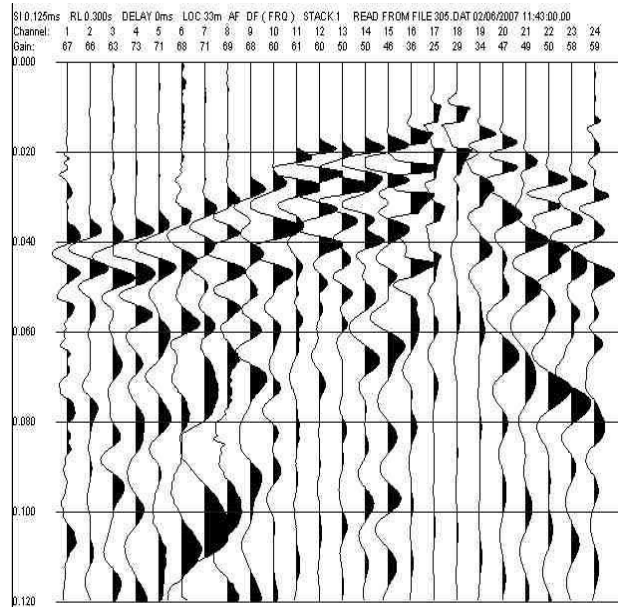
**B Estremo sinistro**



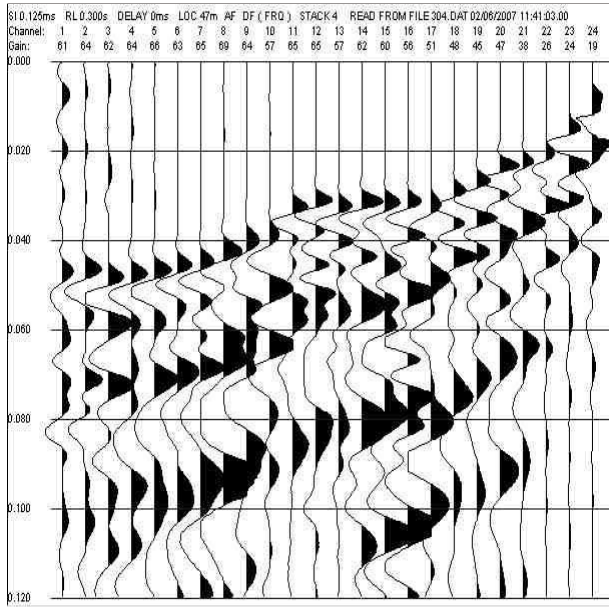
**C Centrale**



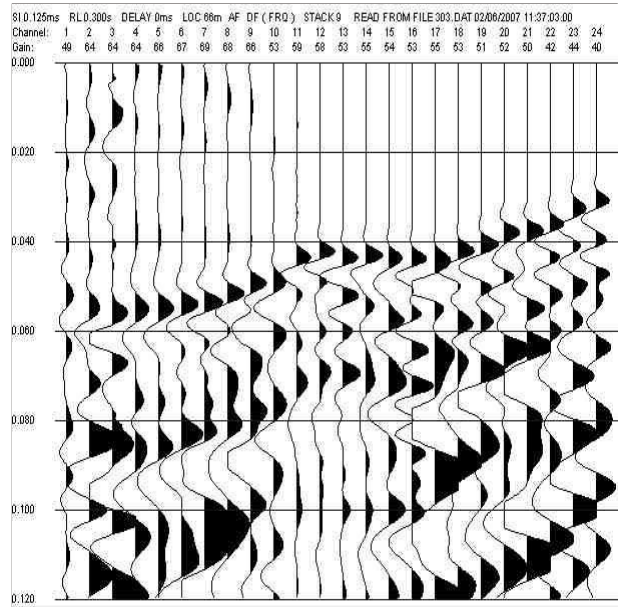
**D Centrale**



**E Estremo destro**

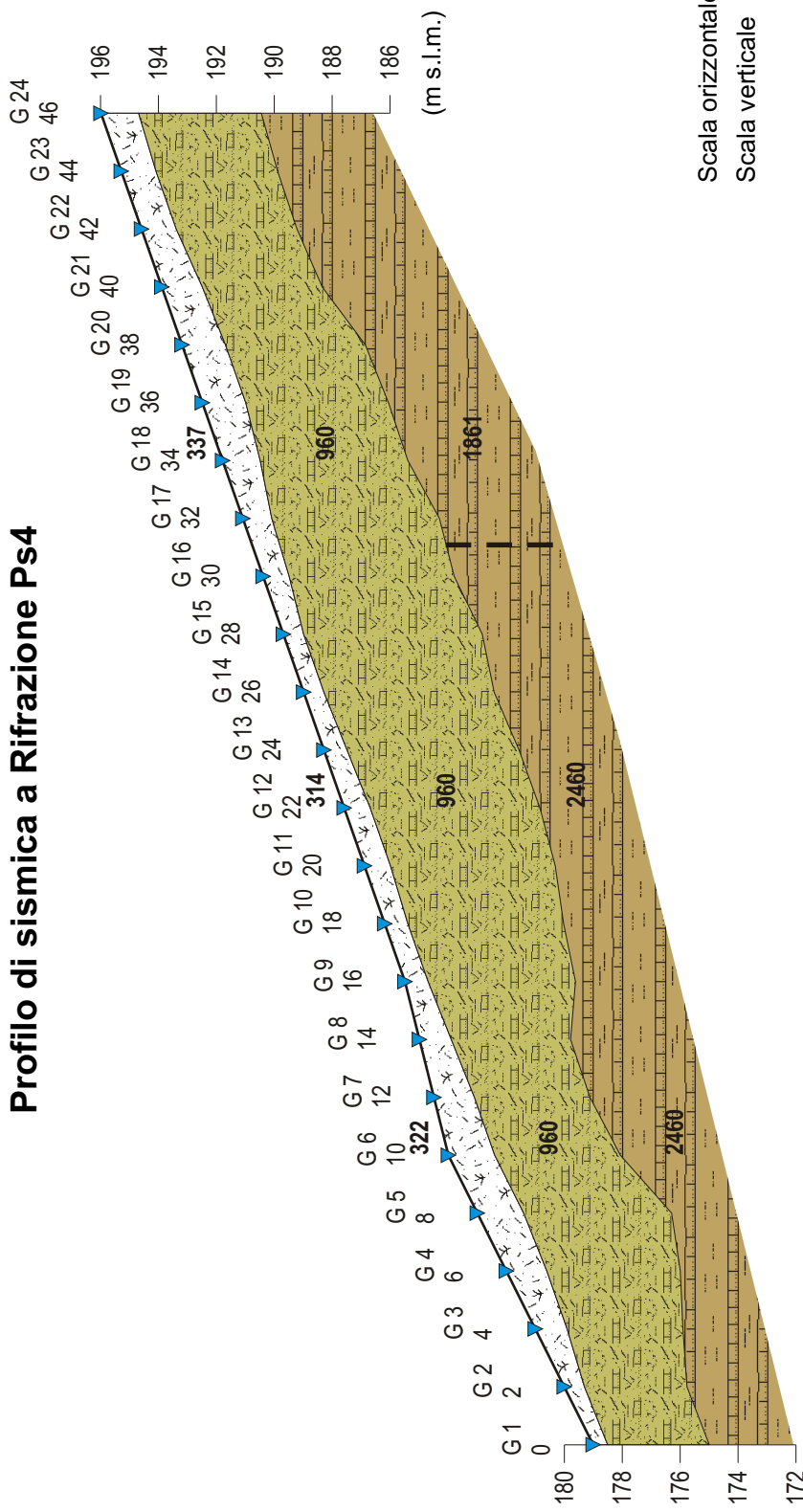


**E Esterno destro**

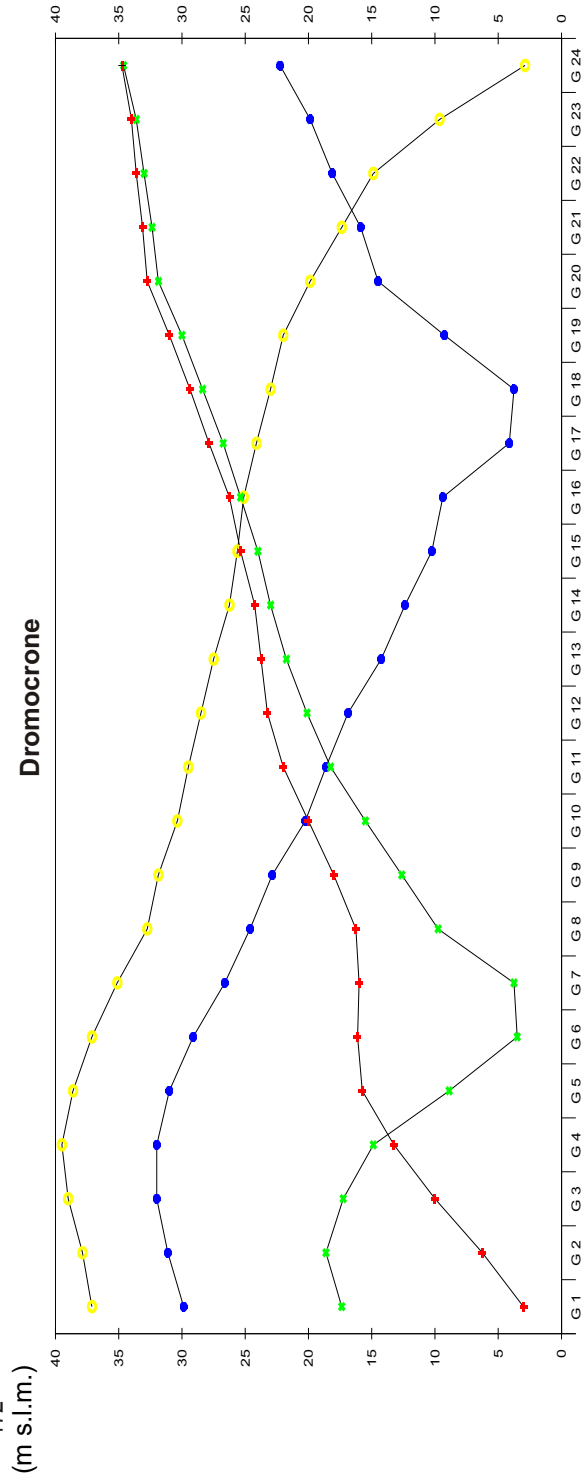


# Profilo di sismica a Rifrazione Ps4

- Materiali di copertura
- Alterazione di Pietraforte
- Pietraforte



Scala orizzontale 1:250  
Scala verticale 1:250



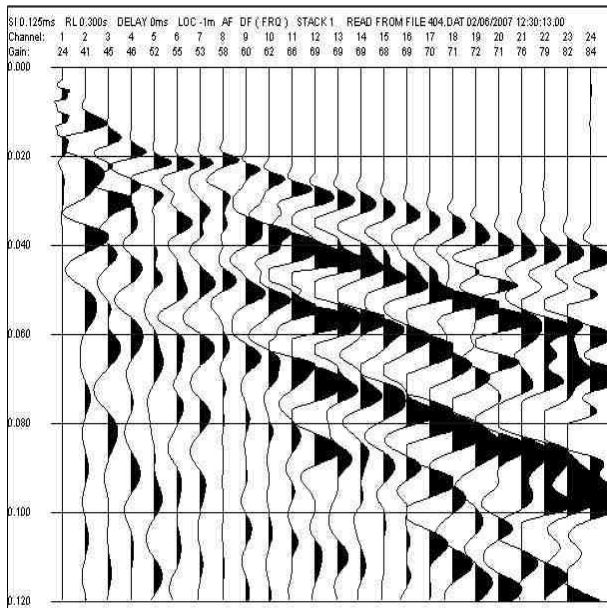


## Dati Ps4

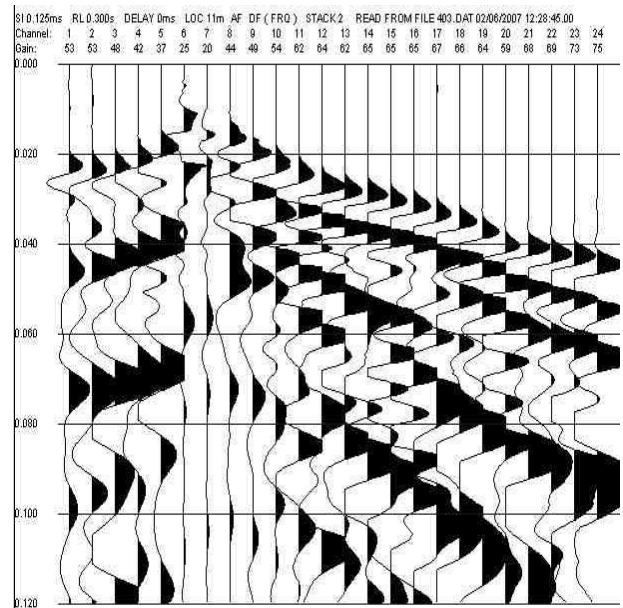
Geo. N°	ShotA ms	ShotB ms	ShotC ms	ShotD ms
1	3.00	17.37	29.87	37.12
2	6.25	18.62	31.12	37.87
3	10.00	17.25	32.00	39.00
4	13.25	14.87	32.00	39.50
5	15.75	8.88	31.00	38.62
6	16.12	3.50	29.12	37.12
7	16.00	3.75	26.62	35.12
8	16.25	9.75	24.62	32.75
9	18.00	12.62	22.87	31.87
10	20.00	15.50	20.25	30.37
11	22.00	18.25	18.62	29.50
12	23.25	20.12	16.87	28.50
13	23.75	21.75	14.25	27.50
14	24.25	23.00	12.37	26.25
15	25.37	24.00	10.25	25.62
16	26.25	25.37	9.38	25.12
17	27.87	26.75	4.12	24.12
18	29.37	28.37	3.75	23.00
19	31.00	30.00	9.25	22.00
20	32.75	31.87	14.50	19.87
21	33.12	32.37	15.87	17.37
22	33.62	33.00	18.12	14.87
23	34.00	33.62	19.87	9.62
24	34.75	34.62	22.25	2.88

Geo. N°	Dist. m	Q m slm	V1 m/sec.	Z1 m	Q1 m slm	V2 m/sec.	Z2 m	H2 m	Q2 m slm	V3 m/sec.
1	0	179.0	336	0.5	178.5	960	3.5	4.0	175.0	2460
2	2	180.0	336	0.7	179.3	960	3.5	4.2	175.8	2460
3	4	181.0	336	1.1	179.9	960	4.0	5.1	175.9	2460
4	6	182.0	336	1.4	180.6	960	4.6	6.0	176.0	2460
5	8	183.0	329	1.6	181.4	960	5.1	6.7	176.3	2460
6	10	184.0	322	1.6	182.4	960	4.3	5.9	178.1	2460
7	12	184.5	314	1.4	183.1	960	4.0	5.4	179.1	2460
8	14	185.0	307	1.1	183.9	960	4.1	5.2	179.8	2460
9	16	185.5	309	0.8	184.7	960	5.1	5.9	179.6	2460
10	18	186.2	310	0.8	185.4	960	5.4	6.2	180.0	2460
11	20	186.9	312	0.9	186.0	960	5.7	6.6	180.3	2460
12	22	187.6	314	0.9	186.7	960	5.9	6.8	180.8	2460
13	24	188.3	315	0.8	187.5	960	5.9	6.7	181.6	2460
14	26	189.0	317	0.7	188.3	960	5.9	6.6	182.4	2460
15	28	189.7	318	0.7	189.0	960	6.2	6.9	182.8	2460
16	30	190.4	320	0.9	189.5	960	5.7	6.6	183.8	2460
17	32	191.1	328	1.0	190.1	960	5.8	6.8	184.3	1861
18	34	191.8	337	1.3	190.5	960	5.1	6.4	185.4	1861
19	36	192.5	346	1.5	191.0	960	4.9	6.4	186.1	1861
20	38	193.2	354	1.5	191.7	960	4.8	6.3	186.9	1861
21	40	193.9	344	1.4	192.5	960	4.1	5.5	188.4	1861
22	42	194.6	333	1.2	193.4	960	4.2	5.4	189.2	1861
23	44	195.3	333	1.2	194.1	960	4.2	5.4	189.9	1861
24	46	196.0	333	1.3	194.7	960	4.2	5.5	190.5	1861

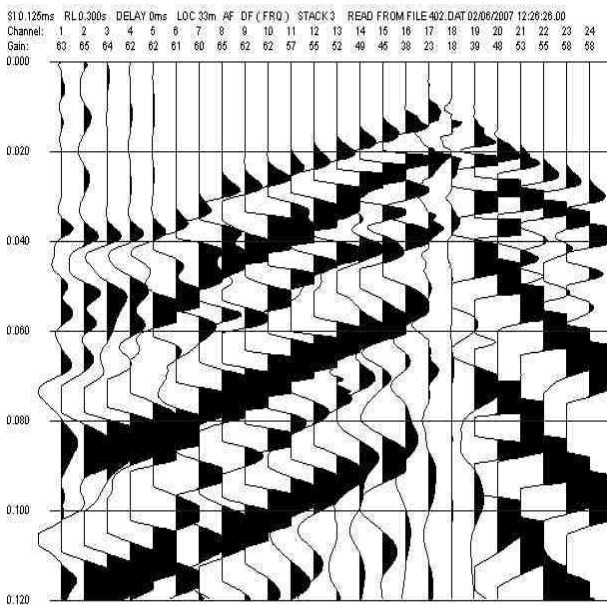
A Estremo sinistro



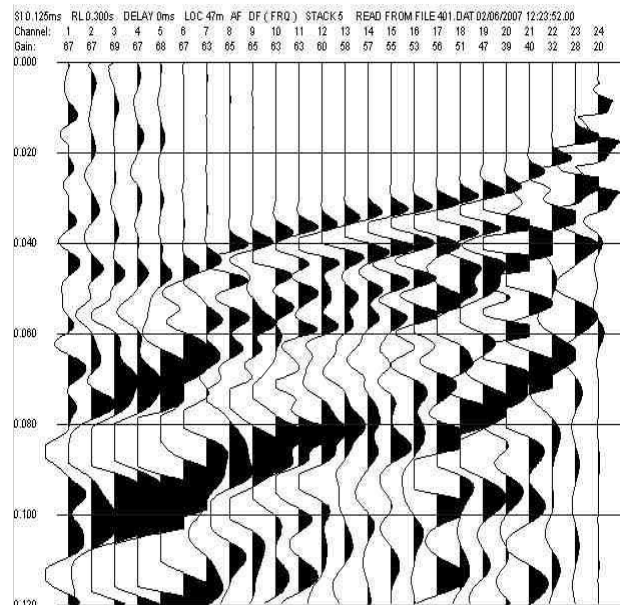
B Centrale






C Centrale

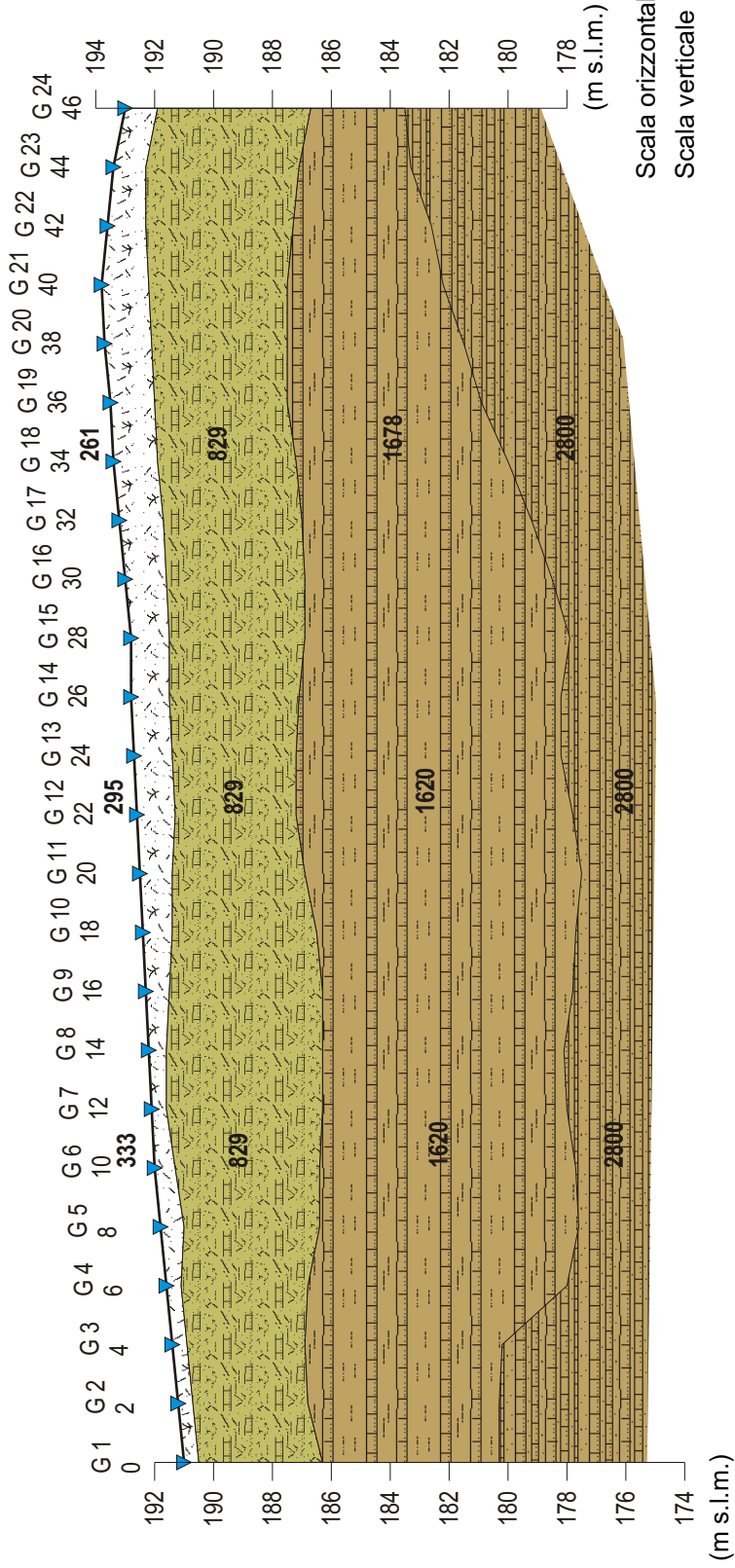


D Estremo destro

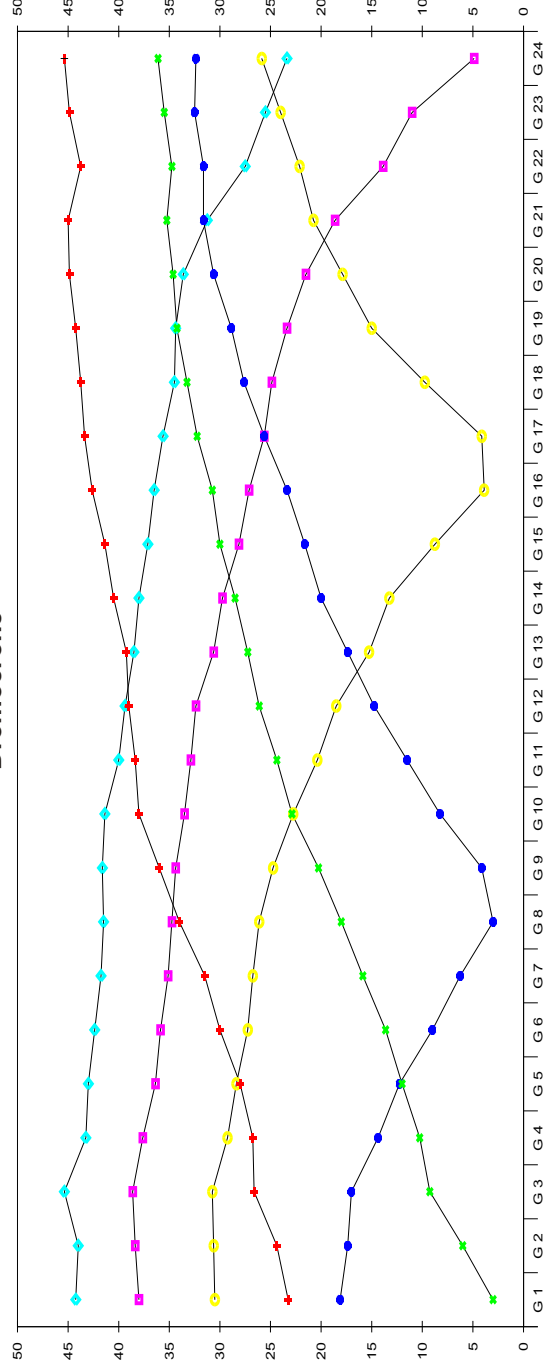


# Profilo di sismica a Rifrazione Ps5

-  Materiali di copertura
-  Alterazione di Pietraforte
-  Pietraforte



## Dromocrone



**Dati Ps5**

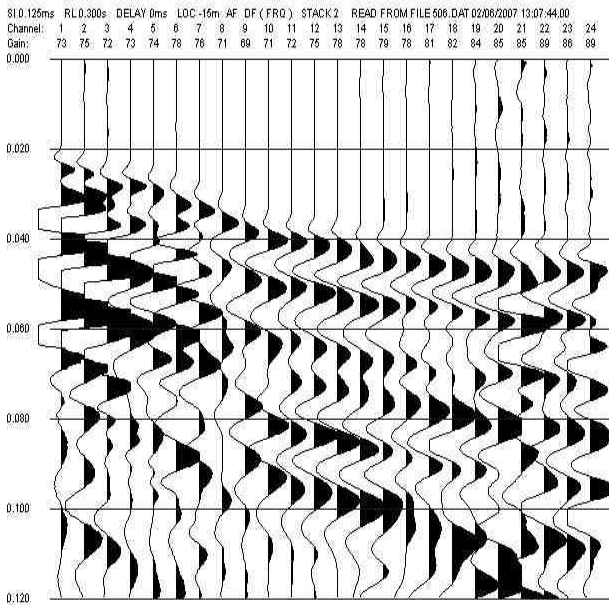
Geo. N°	ShotA ms	ShotB ms	ShotC ms	ShotD ms	ShotE ms	ShotF ms
1	23.25	3.00	18.12	30.50	38.00	44.25
2	24.37	6.00	17.37	30.62	38.37	44.00
3	26.62	9.25	17.00	30.75	38.62	45.37
4	26.75	10.25	14.37	29.25	37.62	43.25
5	28.00	12.00	12.25	28.37	36.37	43.00
6	30.00	13.62	9.00	27.25	35.87	42.37
7	31.50	15.87	6.25	26.75	35.12	41.75
8	34.00	18.00	3.00	26.12	34.75	41.50
9	36.00	20.25	4.12	24.75	34.37	41.62
10	38.00	22.87	8.25	22.75	33.50	41.37
11	38.37	24.37	11.50	20.37	32.87	40.00
12	39.00	26.12	14.75	18.50	32.37	39.37
13	39.25	27.25	17.37	15.25	30.62	38.50
14	40.50	28.50	20.00	13.25	29.75	38.00
15	41.37	30.00	21.62	8.75	28.12	37.12
16	42.62	30.75	23.37	3.88	27.12	36.50
17	43.37	32.25	25.62	4.12	25.62	35.62
18	43.75	33.25	27.62	9.75	24.87	34.50
19	44.25	34.25	28.87	15.00	23.37	34.37
20	44.87	34.62	30.62	17.87	21.50	33.62
21	45.00	35.25	31.62	20.75	18.62	31.25
22	43.75	34.75	31.62	22.12	13.87	27.50
23	44.87	35.50	32.50	24.00	11.00	25.50
24	45.37	36.12	32.37	25.87	4.88	23.37

## Dati Ps5

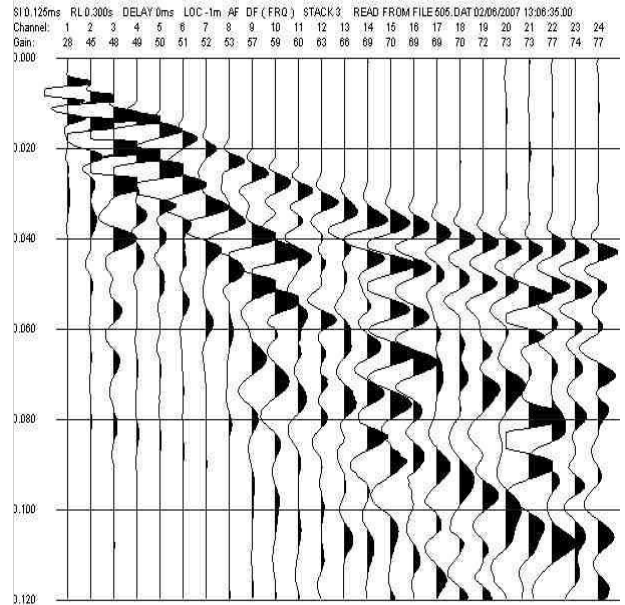
Geo. N°	Dist. m	Q m slim	V1 m/sec.	Z1 m	Q1 m slim	V2 m/sec.	Z2 m	H2 m	Q2 m slim	V3 m/sec.	Z3 m	H3 m	Q3 m slim	V4 m/sec.
1	0	191.0	333	0.5	190.5	829	4.2	4.7	186.3	1620	6.0	10.7	180.3	2800
2	2	191.2	333	0.5	190.7	829	3.9	4.4	186.8	1620	6.5	10.9	180.3	2800
3	4	191.4	333	0.5	190.9	829	4.0	4.5	186.9	1620	6.7	11.2	180.2	2800
4	6	191.6	333	0.5	191.1	829	4.3	4.8	186.8	1620	8.8	13.6	178.0	2800
5	8	191.8	333	0.8	191.0	829	4.6	5.4	186.4	1620	8.8	14.2	177.6	2800
6	10	192.0	333	0.7	191.3	829	4.9	5.6	186.4	1620	8.7	14.3	177.7	2800
7	12	192.1	333	0.5	191.6	829	5.3	5.8	186.3	1620	8.3	14.1	178.0	2800
8	14	192.2	333	0.6	191.6	829	5.3	5.9	186.3	1620	8.2	14.1	178.1	2800
9	16	192.3	324	0.8	191.5	829	5.2	6.0	186.3	1620	8.5	14.5	177.8	2800
10	18	192.4	314	1.0	191.4	829	4.9	5.9	186.5	1620	8.8	14.7	177.7	2800
11	20	192.5	304	1.1	191.4	829	4.5	5.6	186.9	1620	9.4	15.0	177.5	2800
12	22	192.6	295	1.3	191.3	829	4.1	5.4	187.2	1620	9.4	14.8	177.8	2800
13	24	192.7	286	1.3	191.4	829	4.2	5.5	187.2	1678	9.0	14.5	178.2	2800
14	26	192.8	276	1.3	191.5	829	4.4	5.7	187.1	1678	8.9	14.6	178.2	2800
15	28	192.8	266	1.3	191.5	829	4.6	5.9	186.9	1678	9.0	14.9	177.9	2800
16	30	193.0	257	1.4	191.6	829	4.7	6.1	186.9	1678	8.4	14.5	178.5	2800
17	32	193.2	259	1.5	191.7	829	4.7	6.2	187.0	1678	7.8	14.0	179.2	2800
18	34	193.4	261	1.5	191.9	829	4.7	6.2	187.2	1678	7.2	13.4	180.0	2800
19	36	193.5	263	1.5	192.0	829	4.5	6.0	187.5	1678	6.6	12.6	180.9	2800
20	38	193.7	266	1.6	192.1	829	4.6	6.2	187.5	1678	6.0	12.2	181.5	2800
21	40	193.8	268	1.6	192.2	829	4.7	6.3	187.5	1678	5.3	11.6	182.2	2800
22	42	193.6	270	1.3	192.3	829	5.0	6.3	187.3	1678	4.7	11.0	182.6	2800
23	44	193.4	272	1.1	192.3	829	5.2	6.3	187.1	1678	3.8	10.1	183.3	2800
24	46	193.0	272	1.1	191.9	829	5.2	6.3	186.7	1678	3.2	9.5	183.5	2800

# Registrazioni Ps5

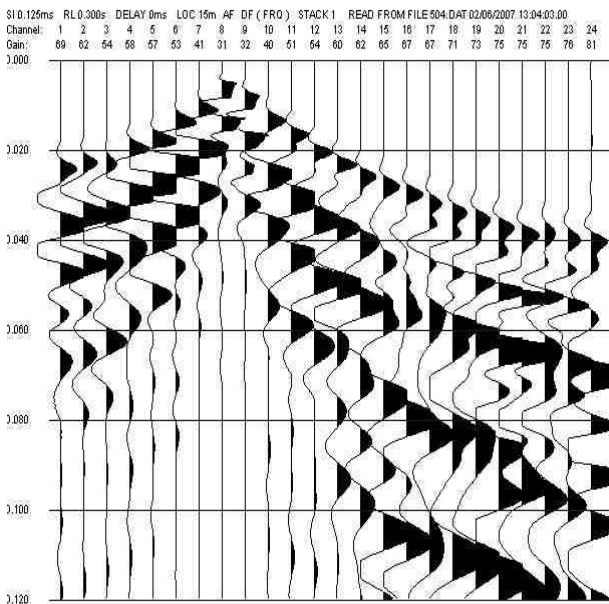
**A Esterno sinistro**



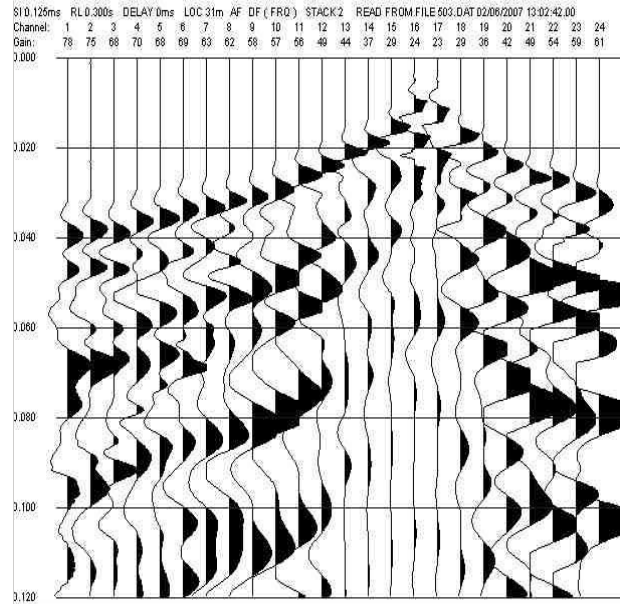
**B Estremo sinistro**



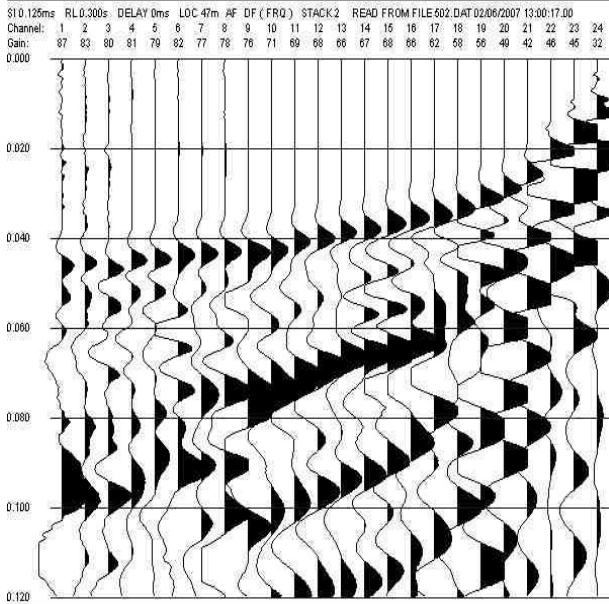
**C Centrale**



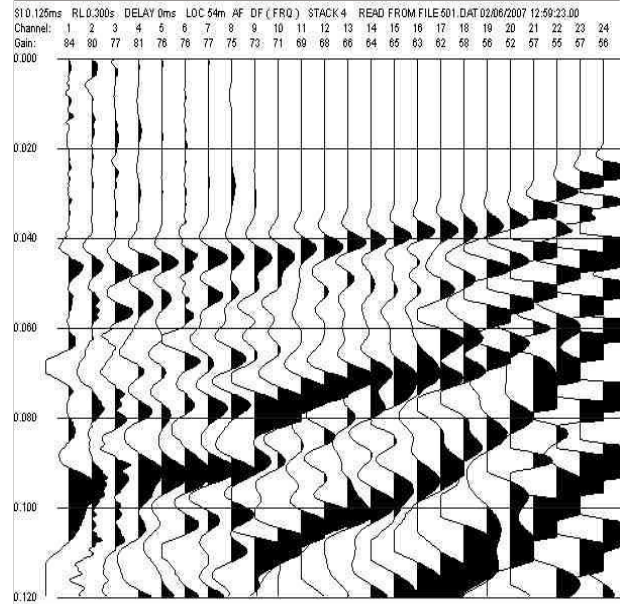
**D Centrale**



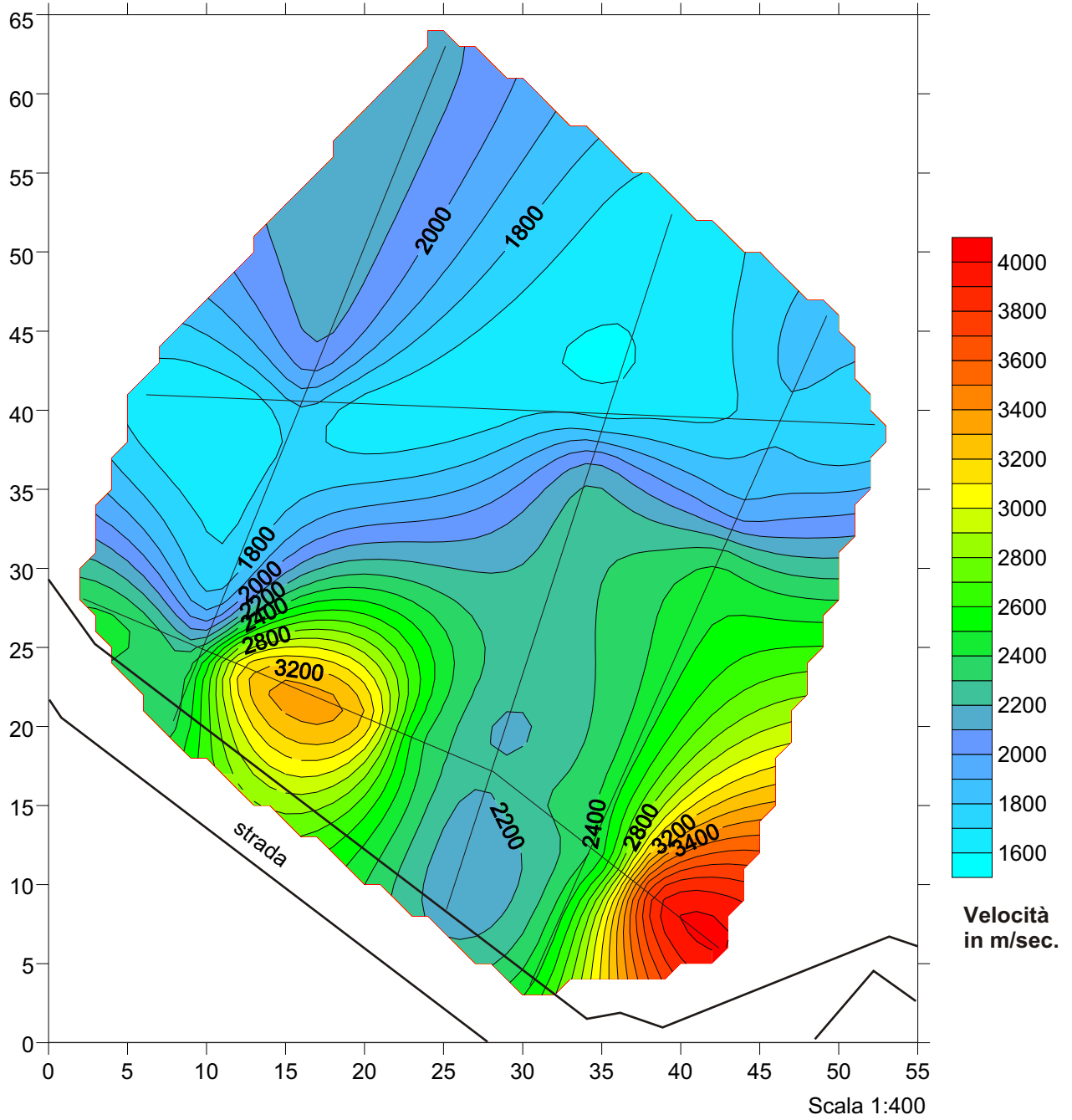
**E Estremo destro**



**E Esterno destro**



### Ricostruzione andamento velocità V3 nel substrato



### Ricostruzione profondità dell' substrato

