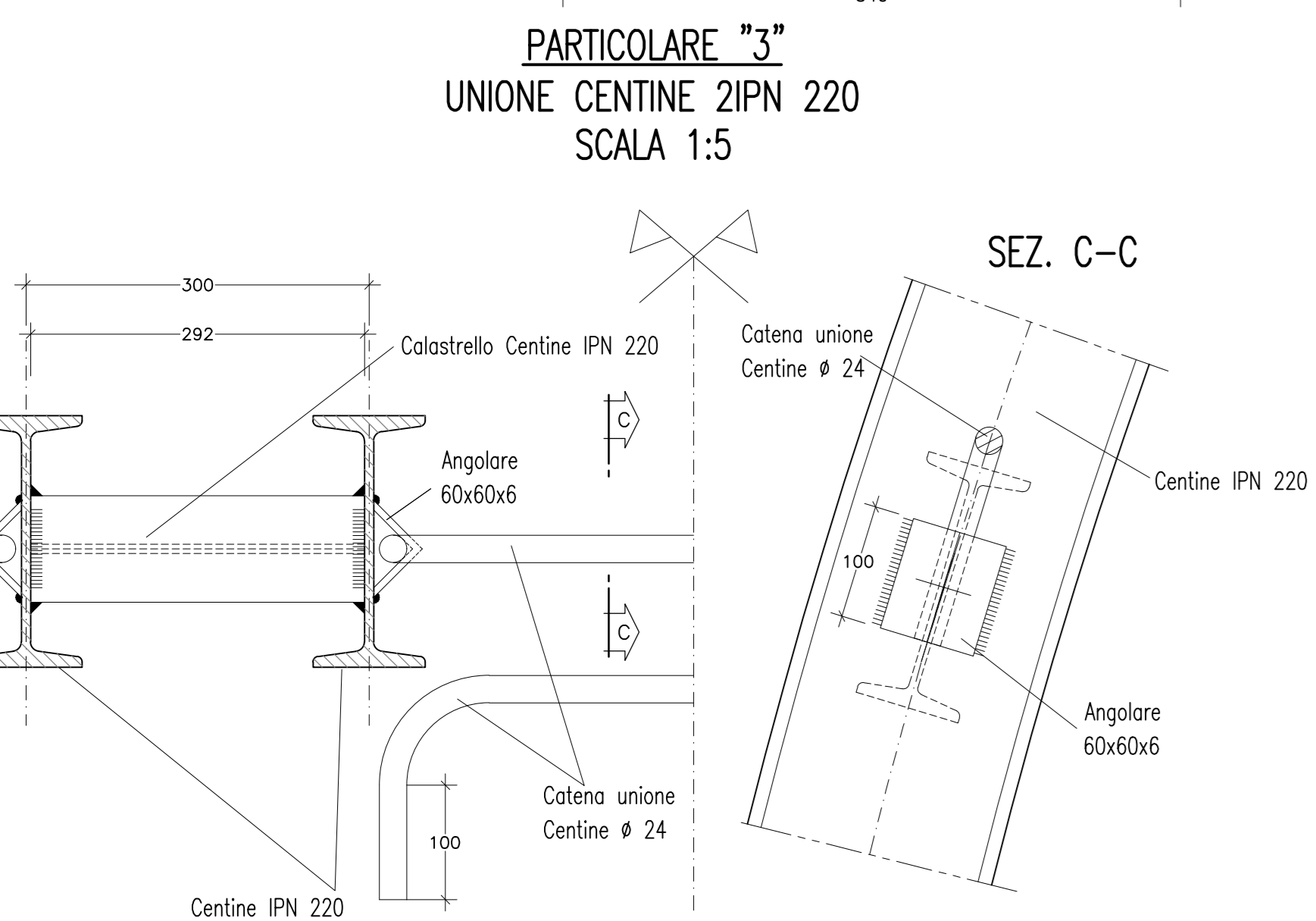
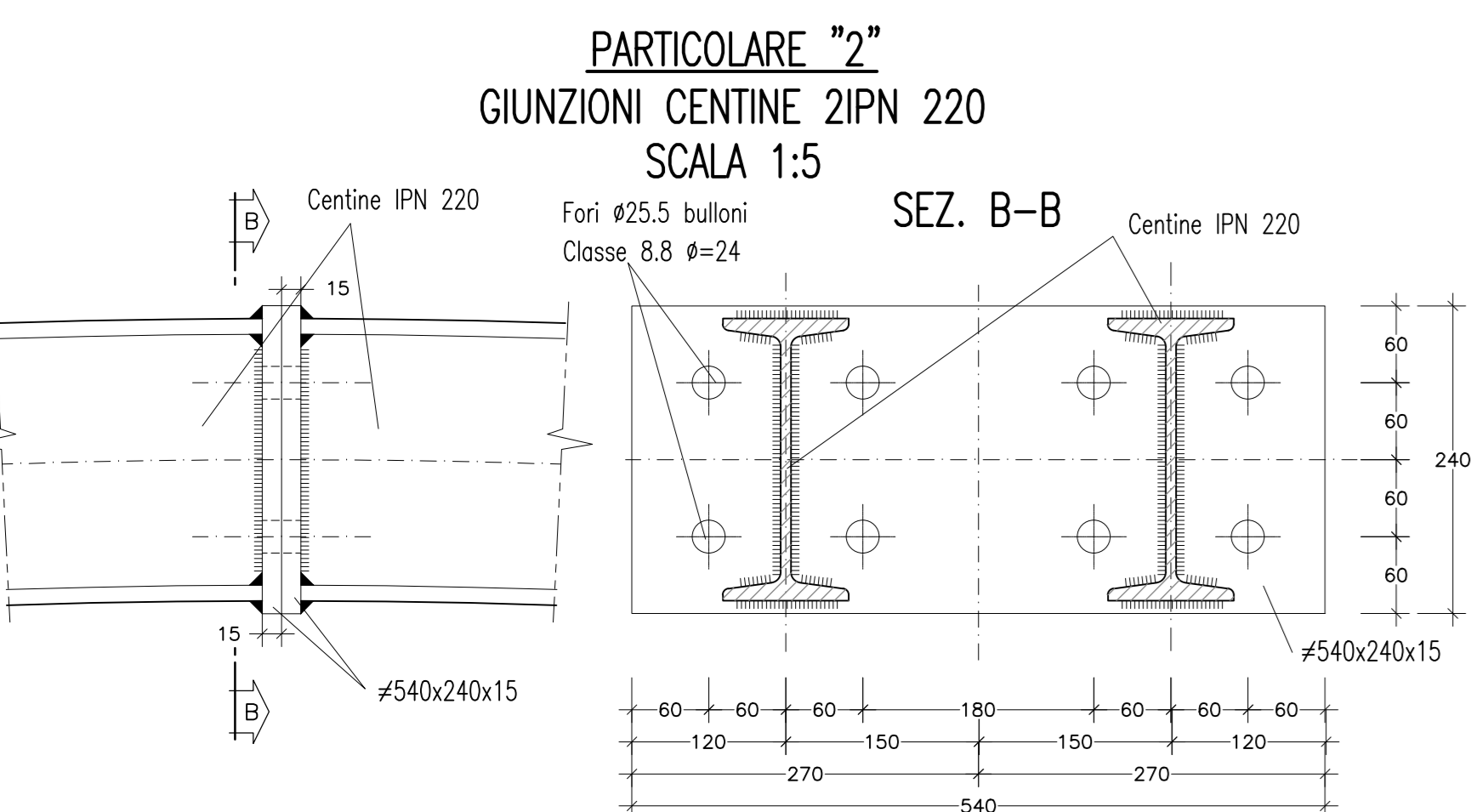
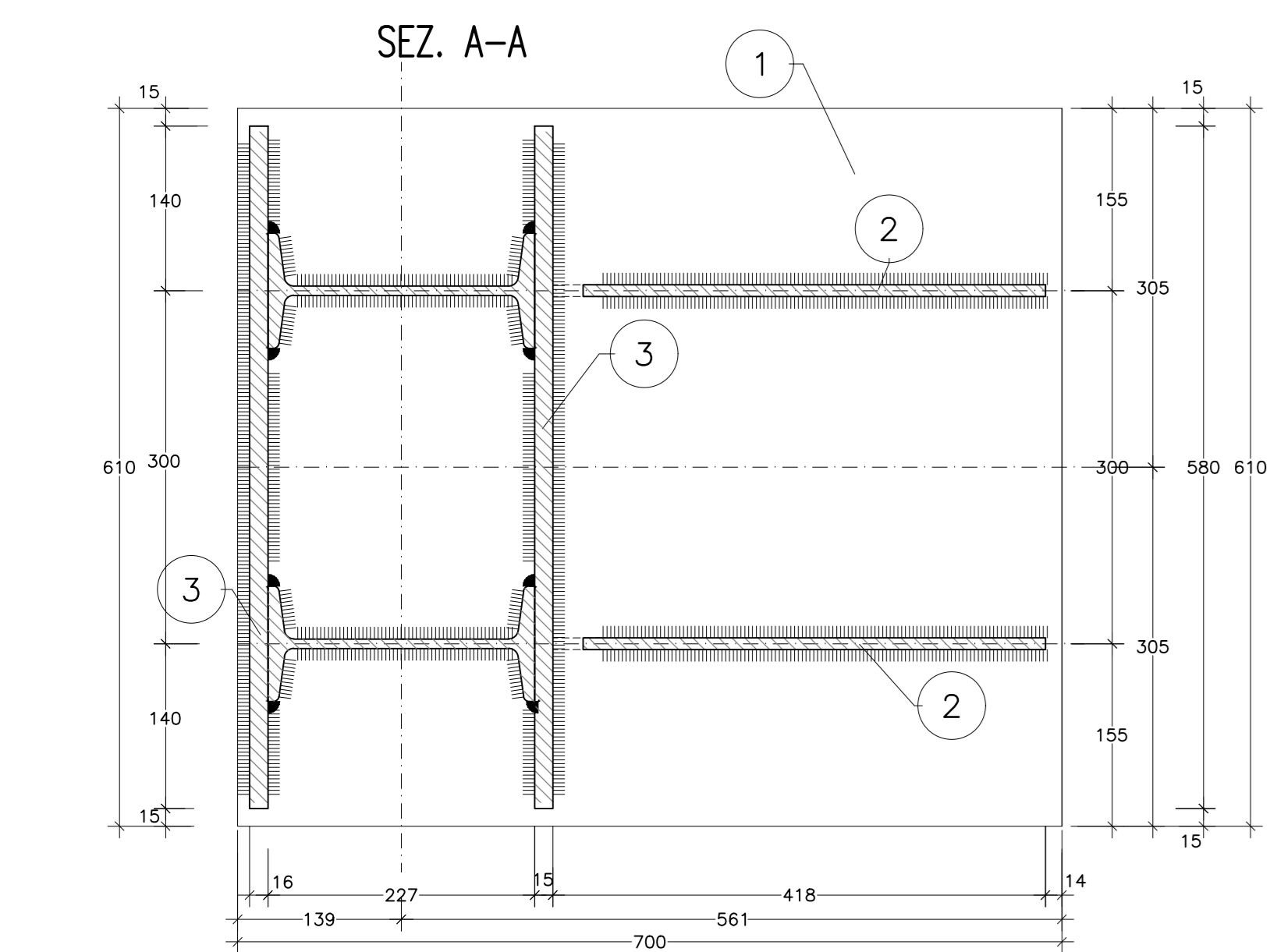
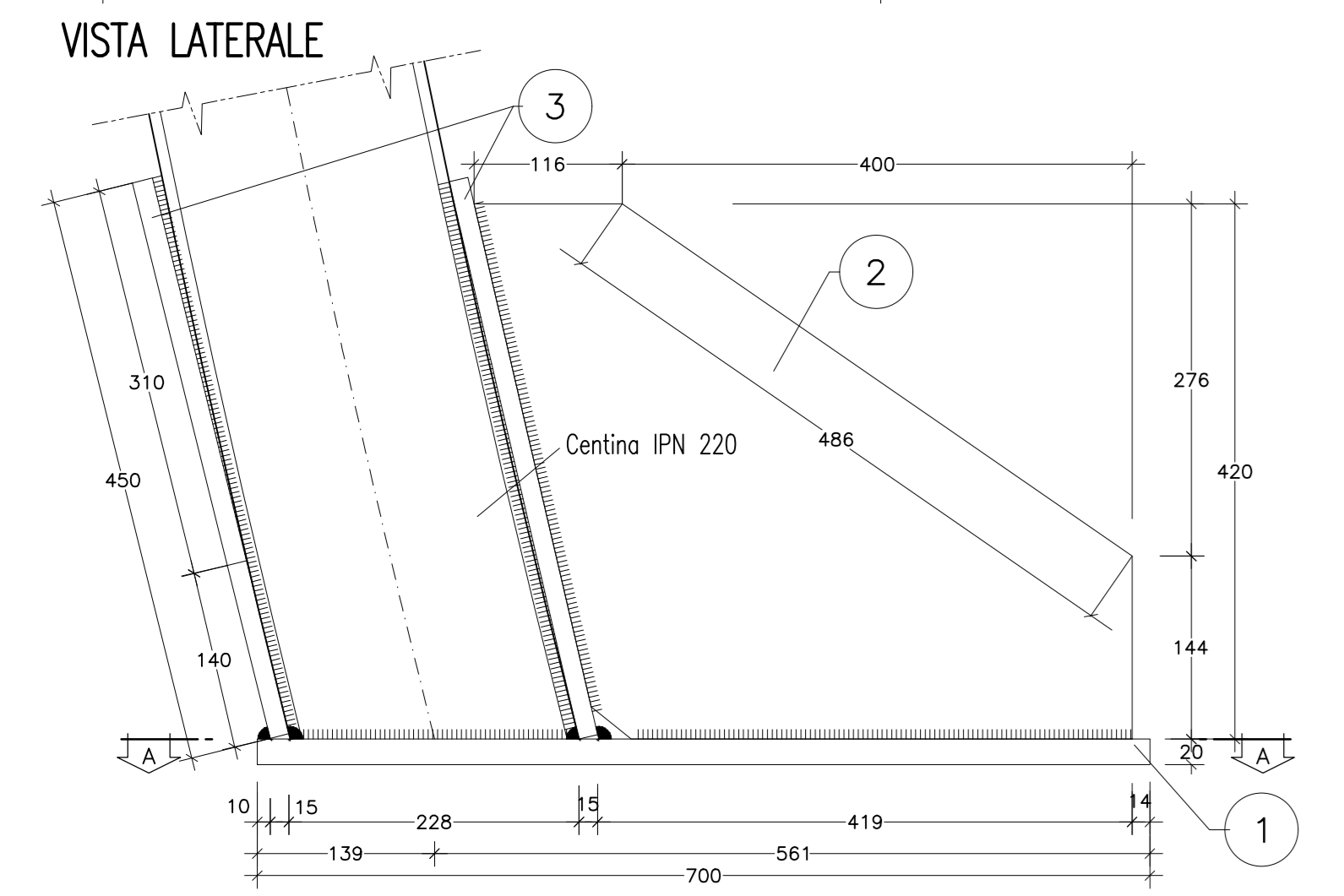
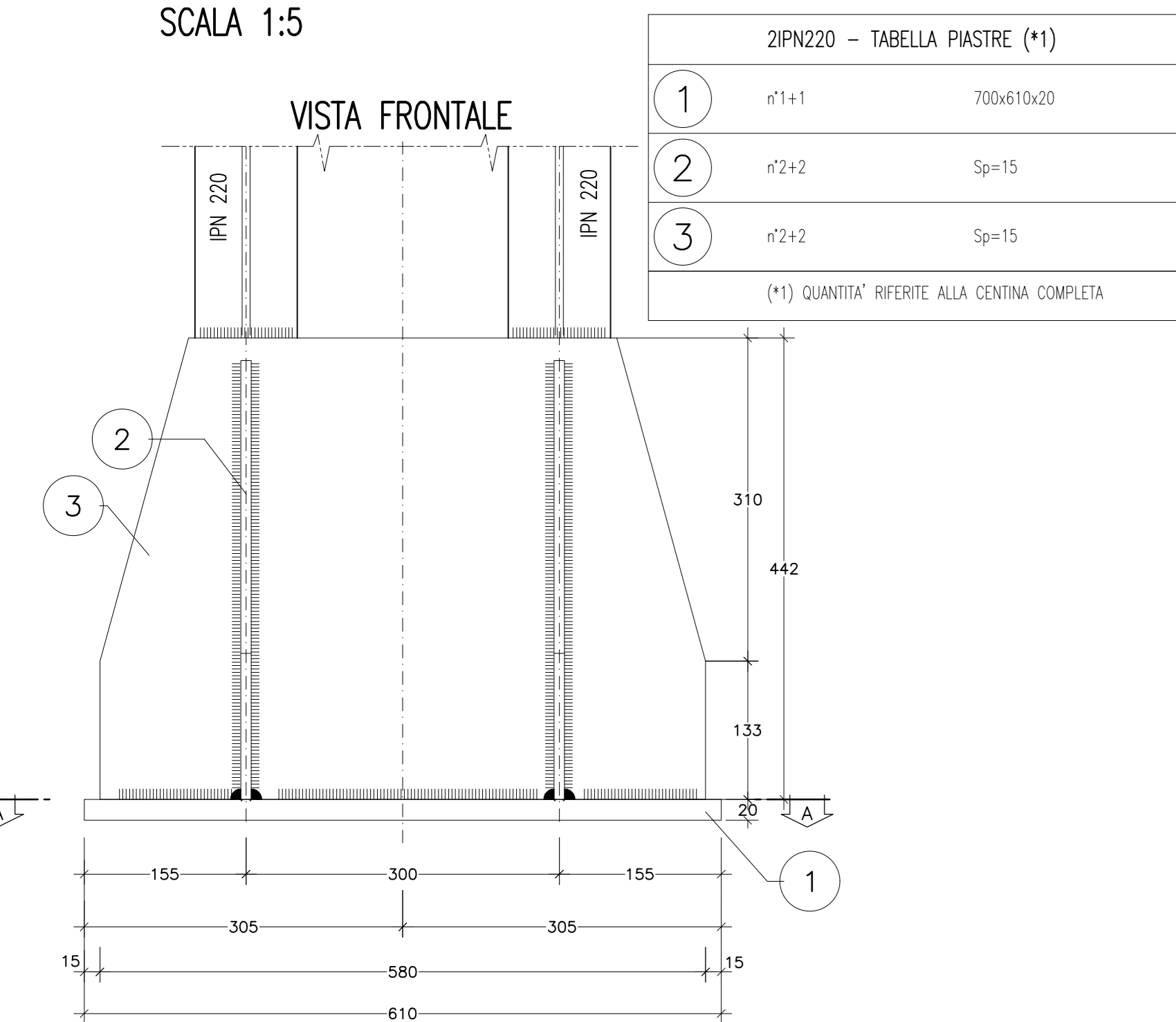
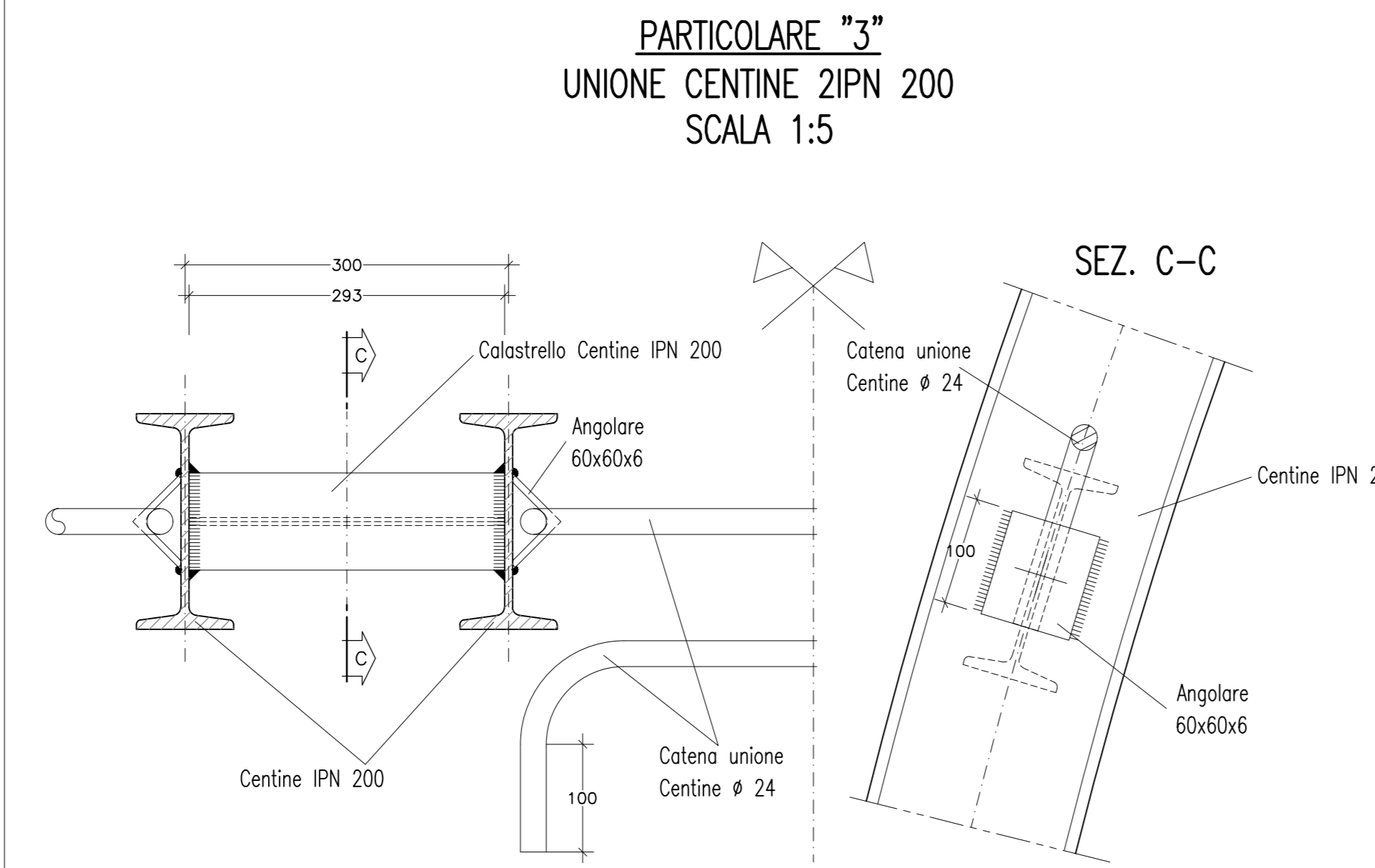
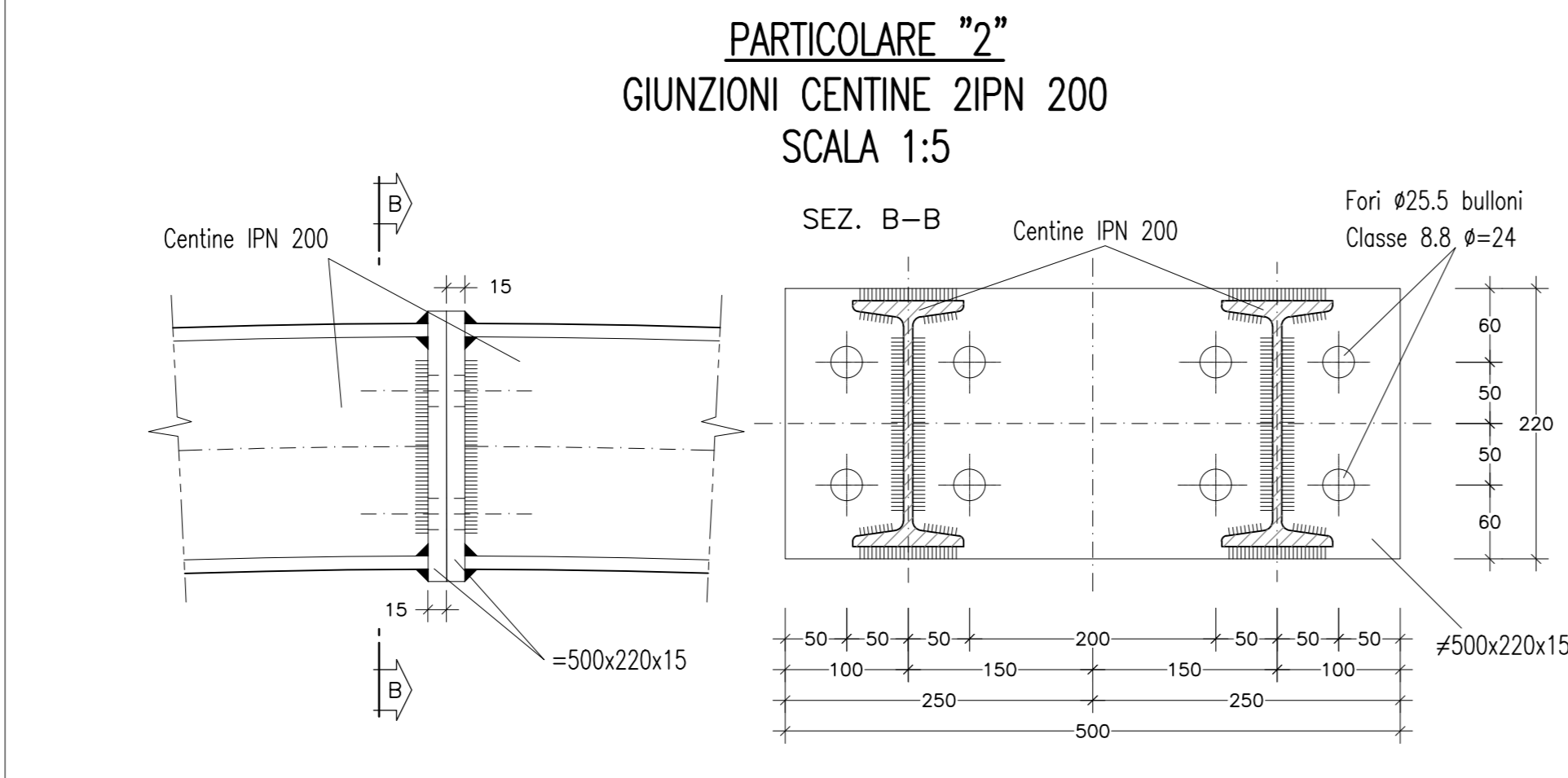
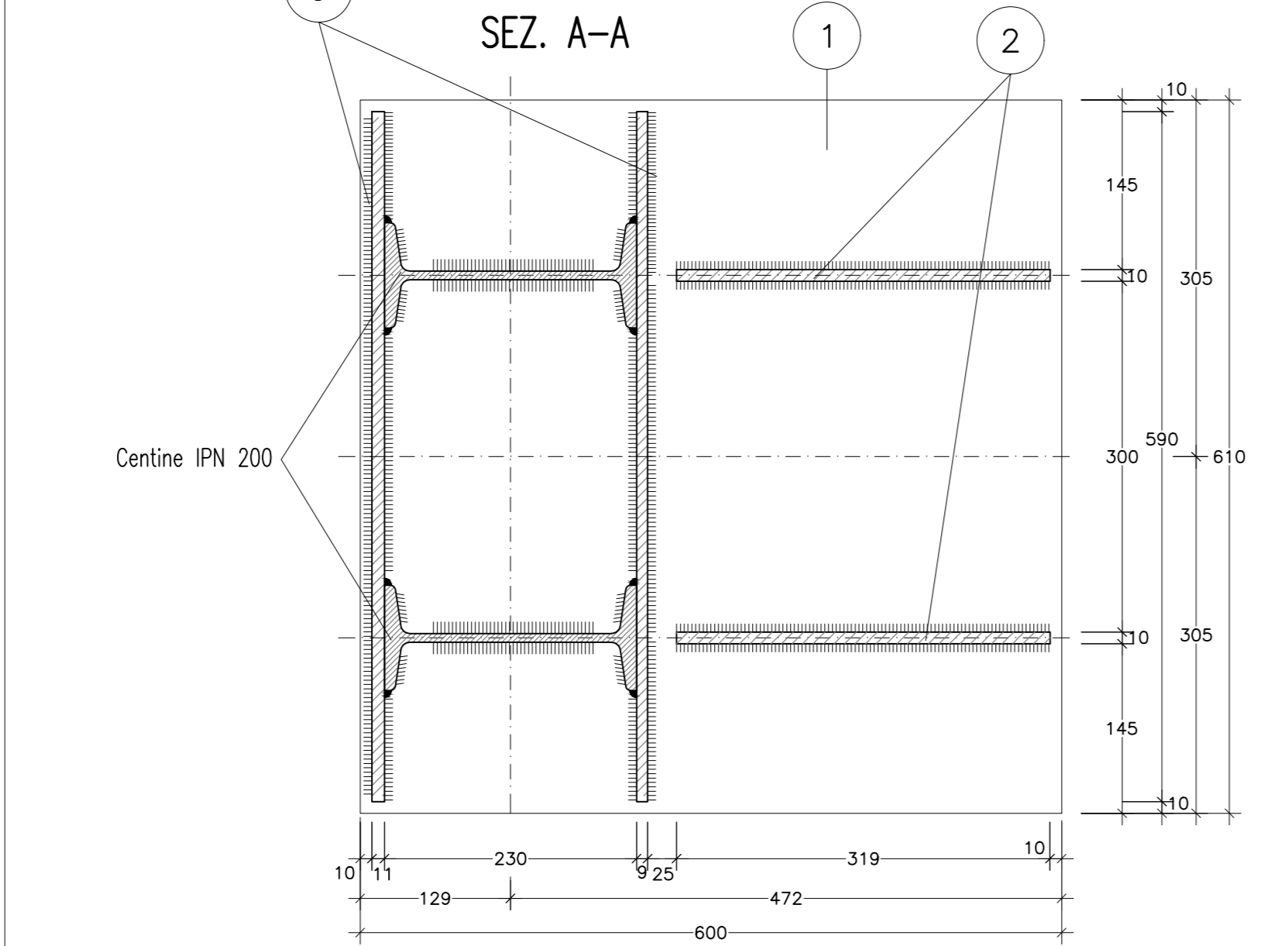
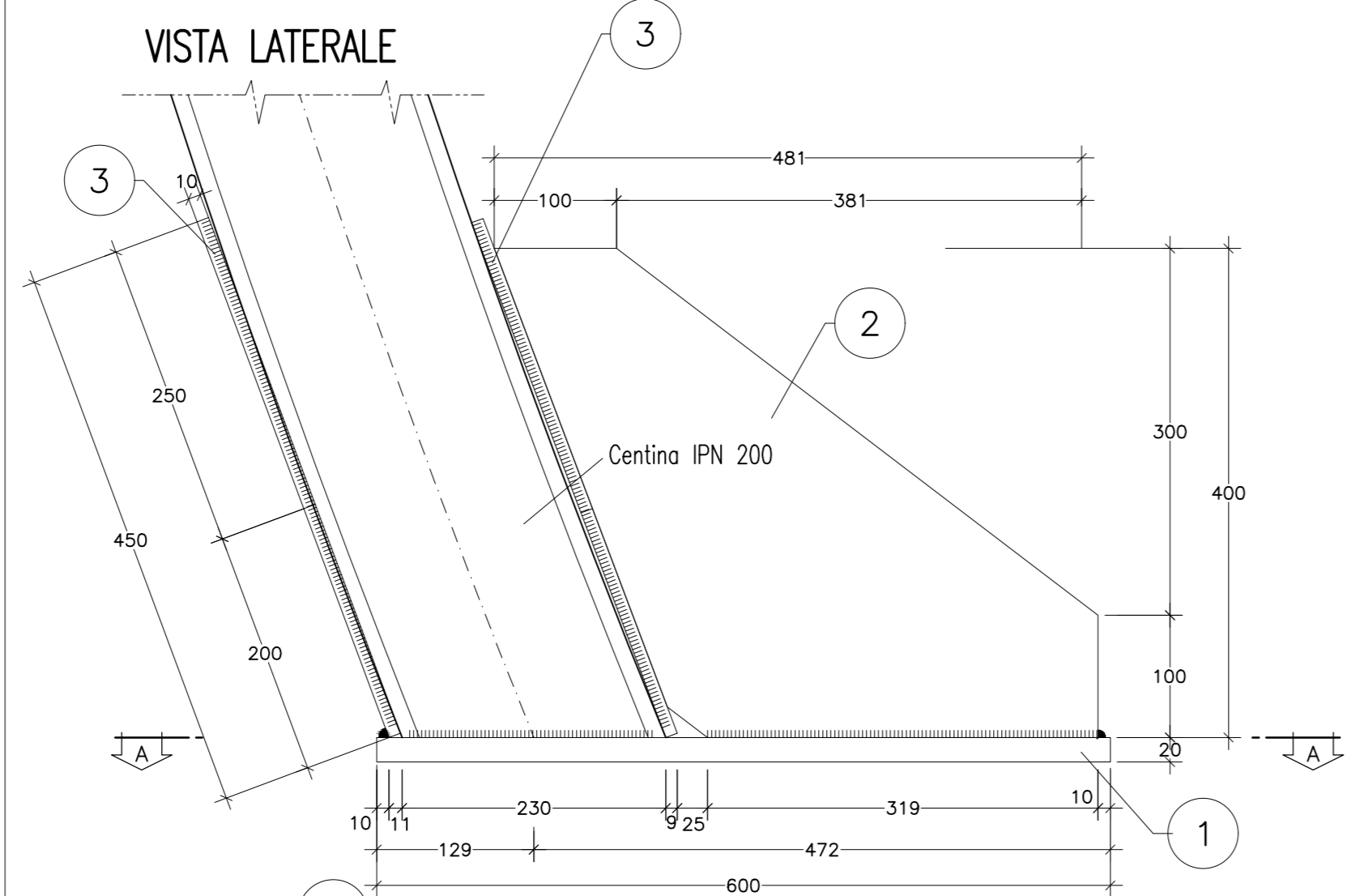
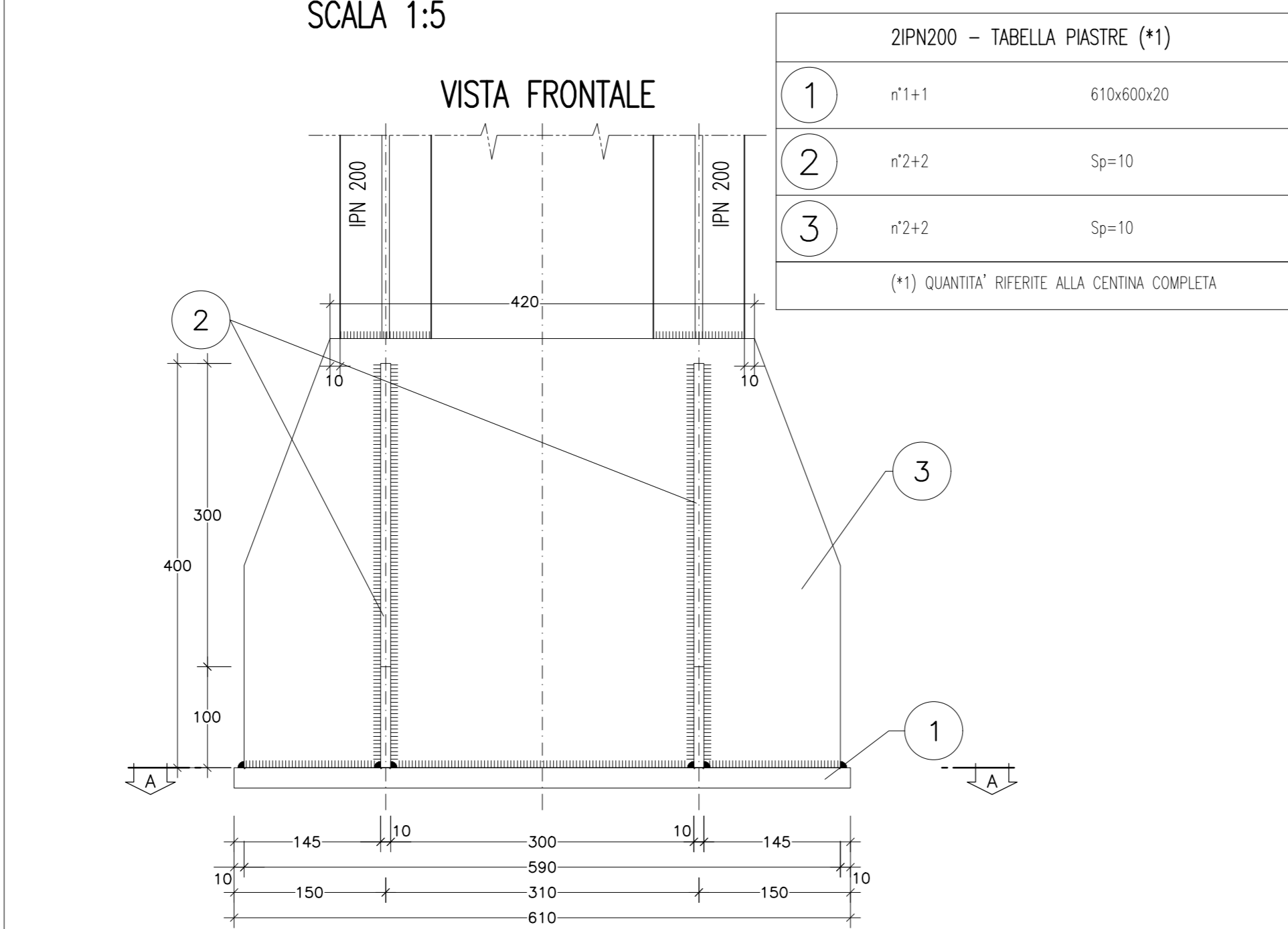


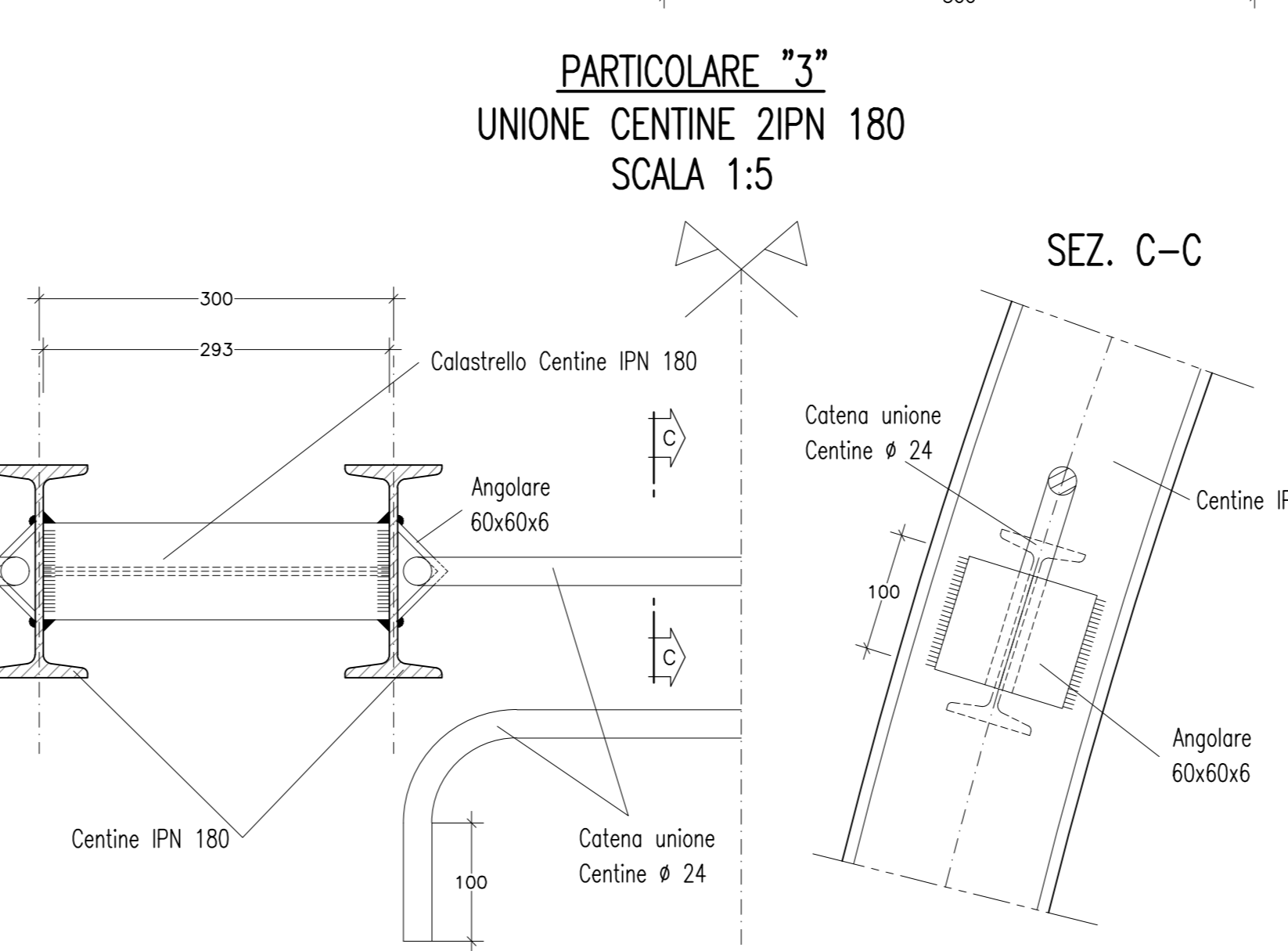
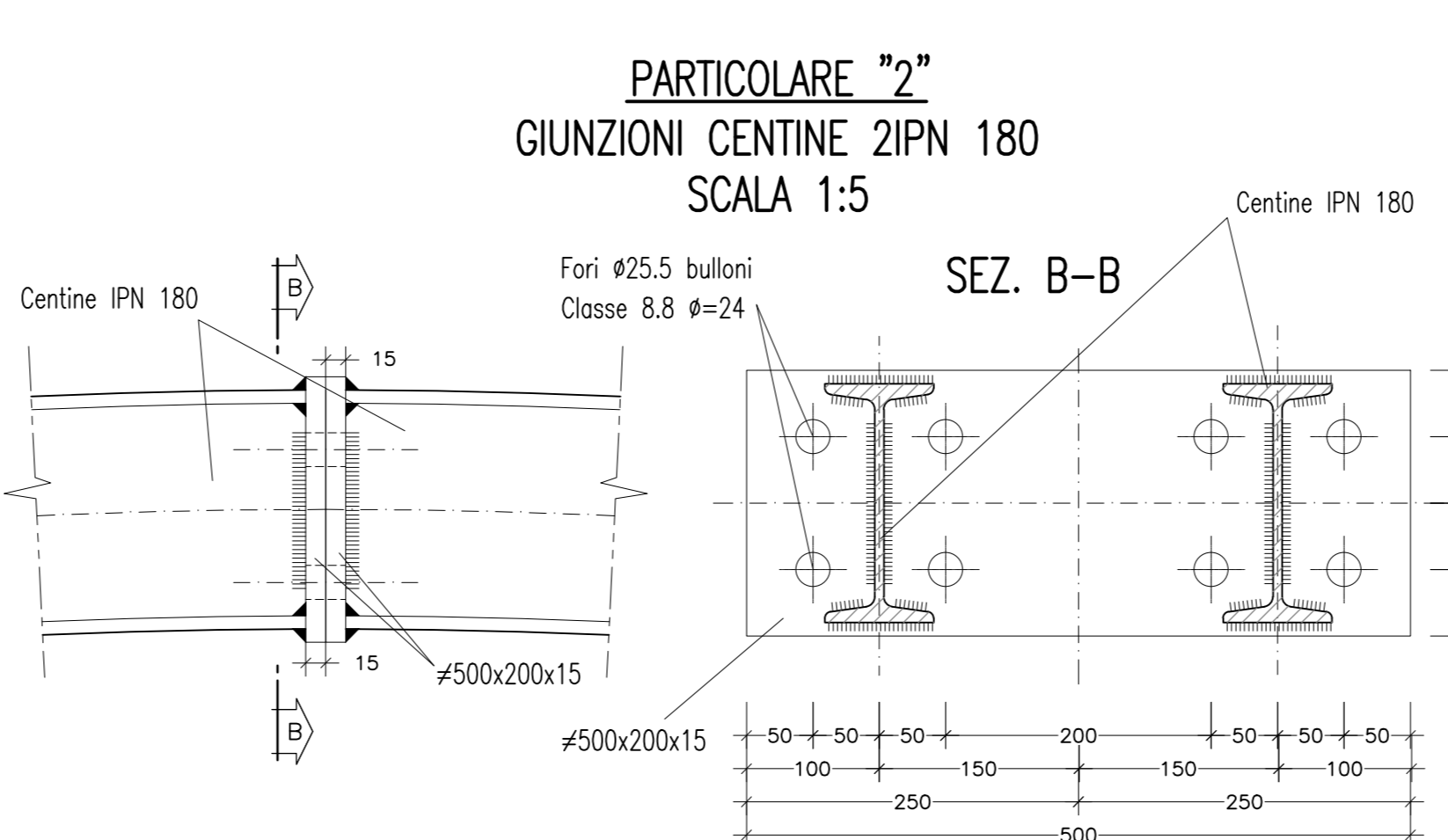
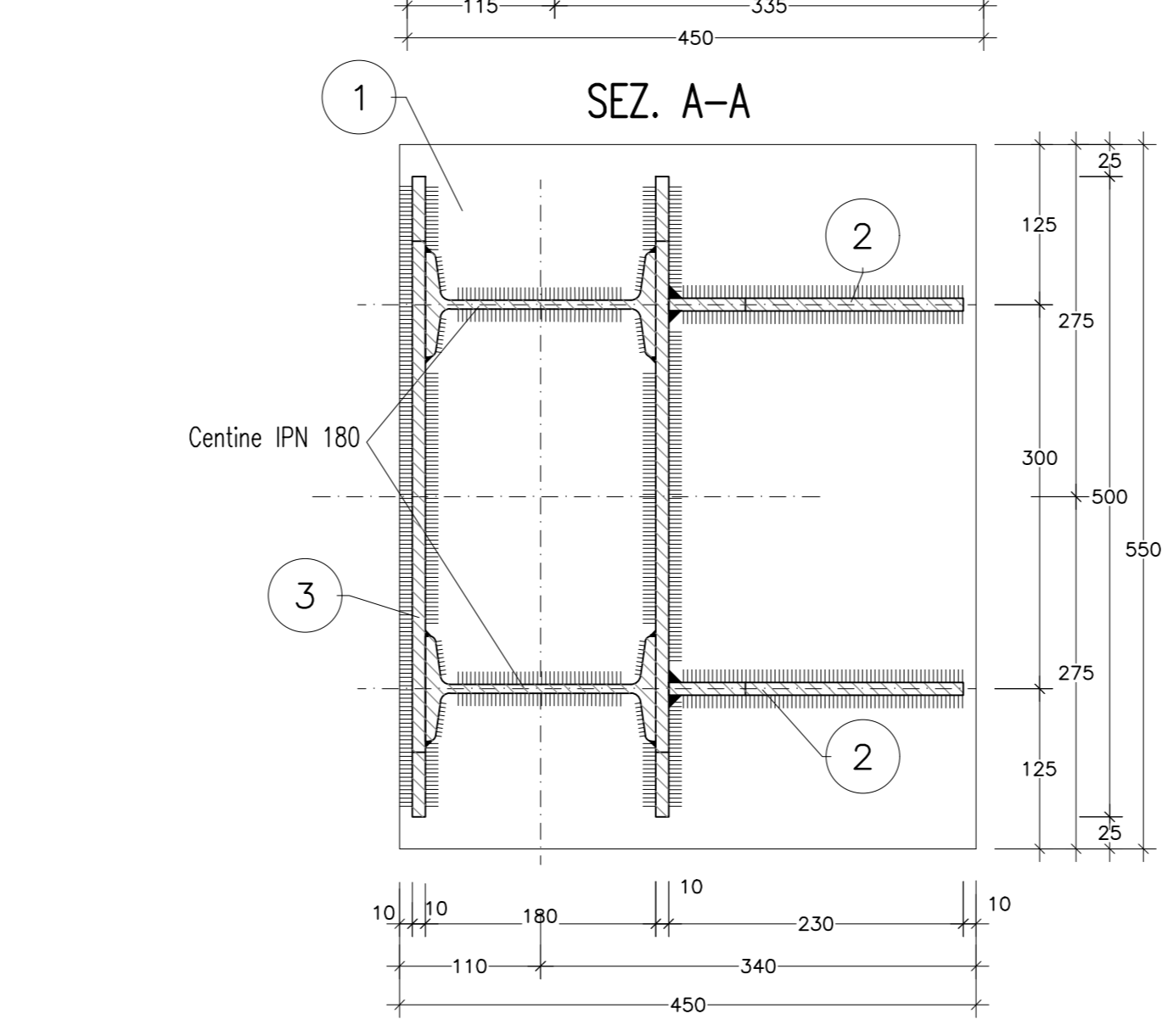
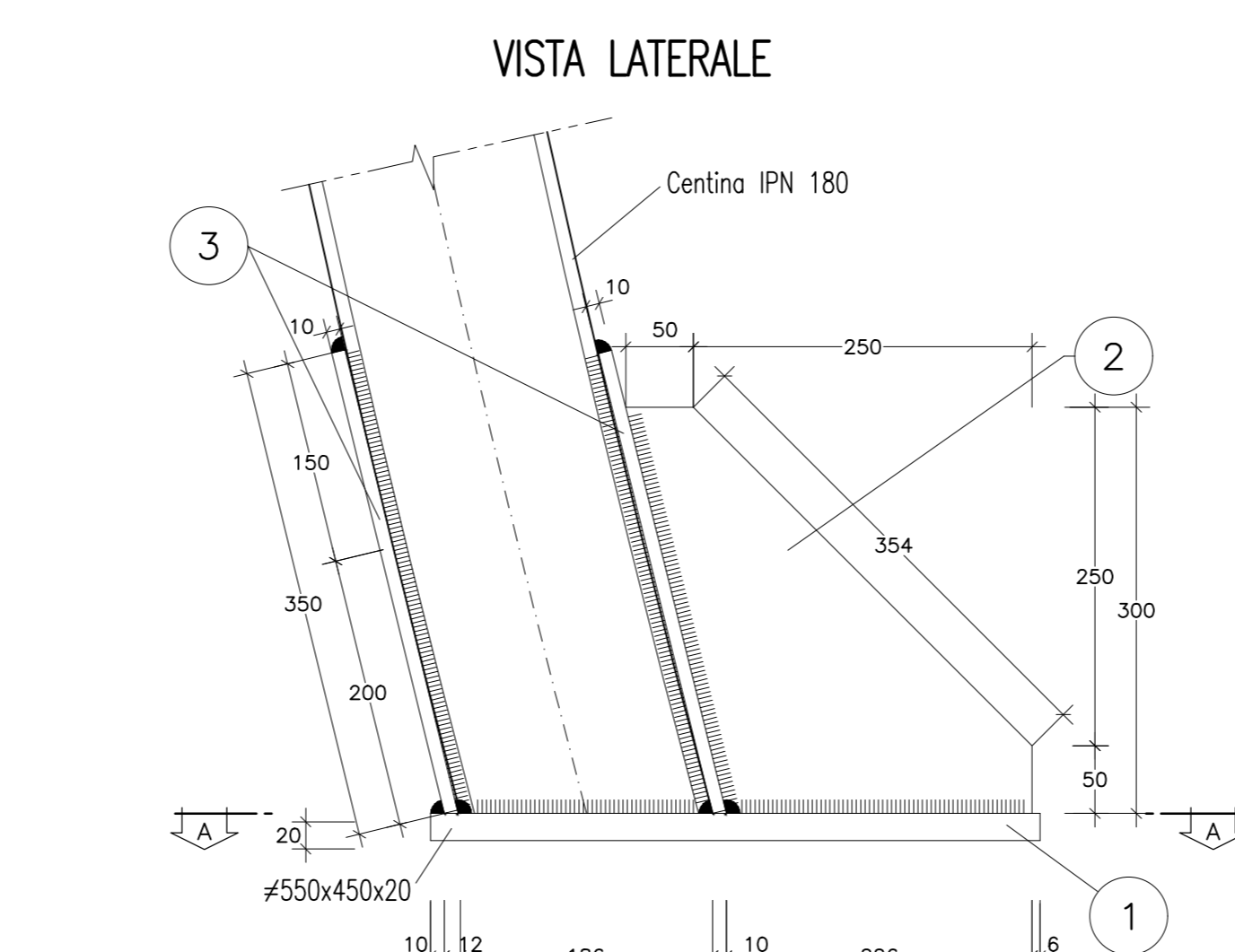
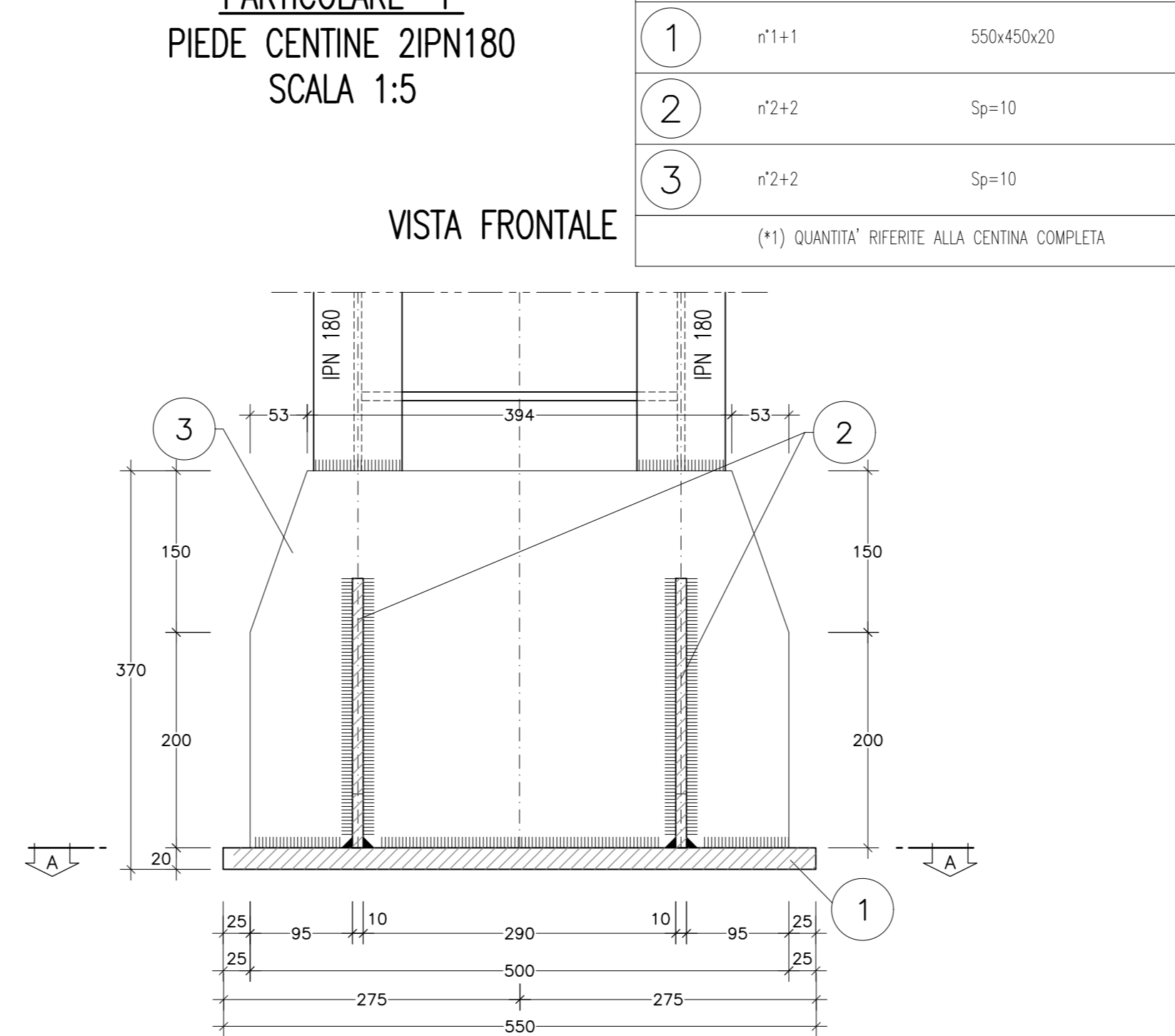
PARTICOLARE "1"
PIEDE CENTINE 2IPN 220
SCALA 1:5



PARTICOLARE "1"
PIEDE CENTINE 2IPN 200
SCALA 1:5



PARTICOLARE "1"
PIEDE CENTINE 2IPN 180
SCALA 1:5



PARTICOLARE "1"
PIEDE CENTINE 2IPN 160
SCALA 1:5

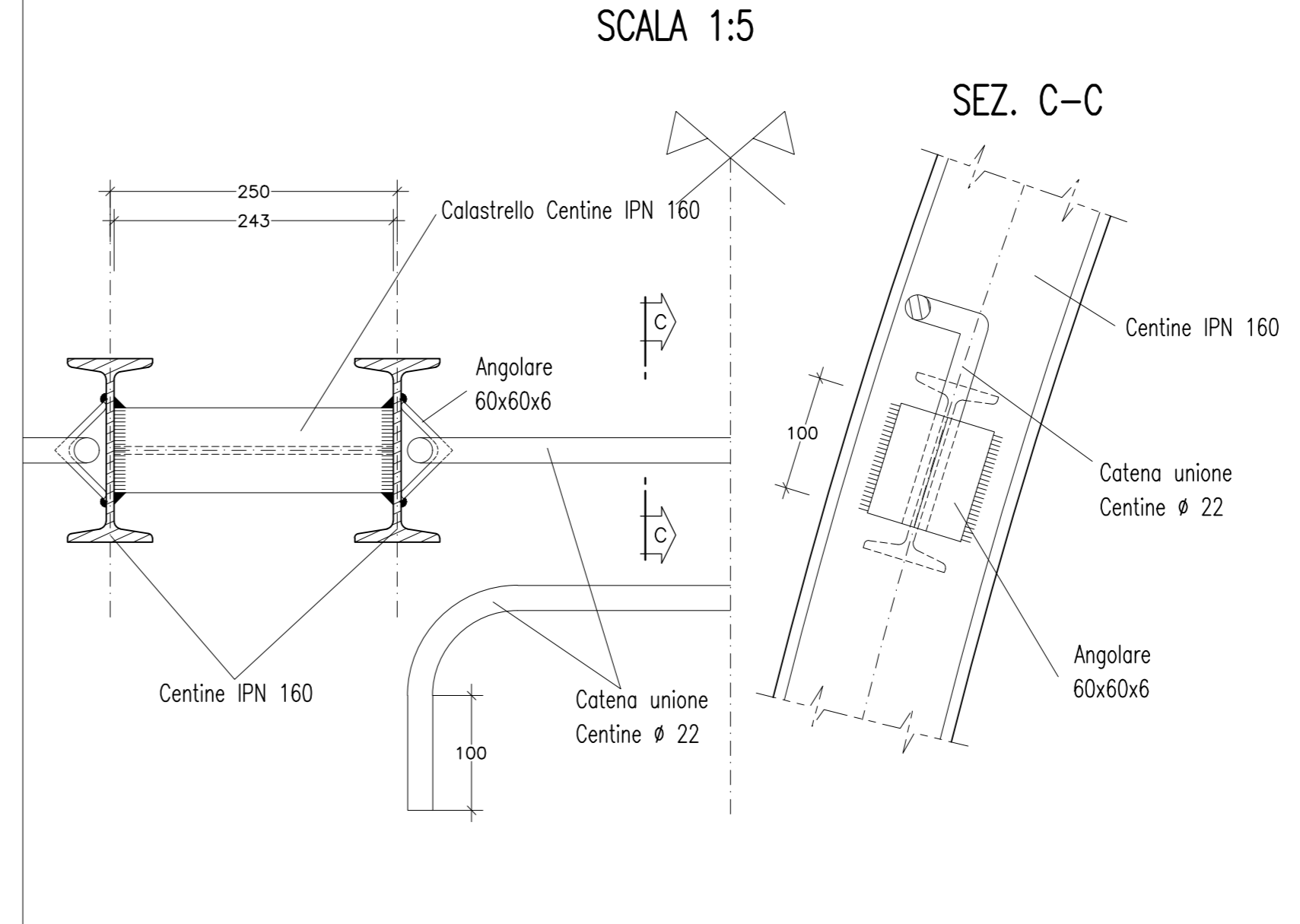
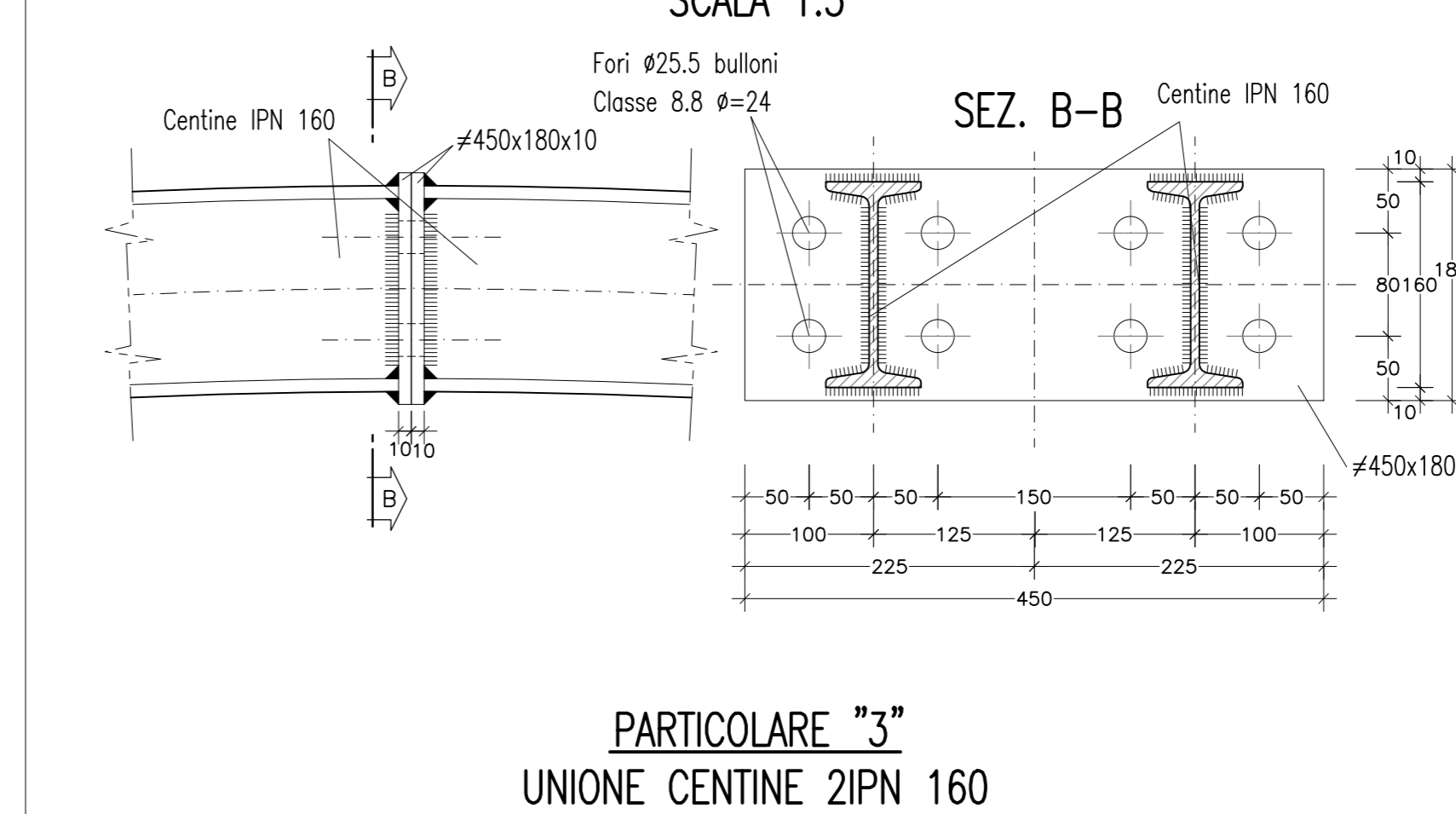
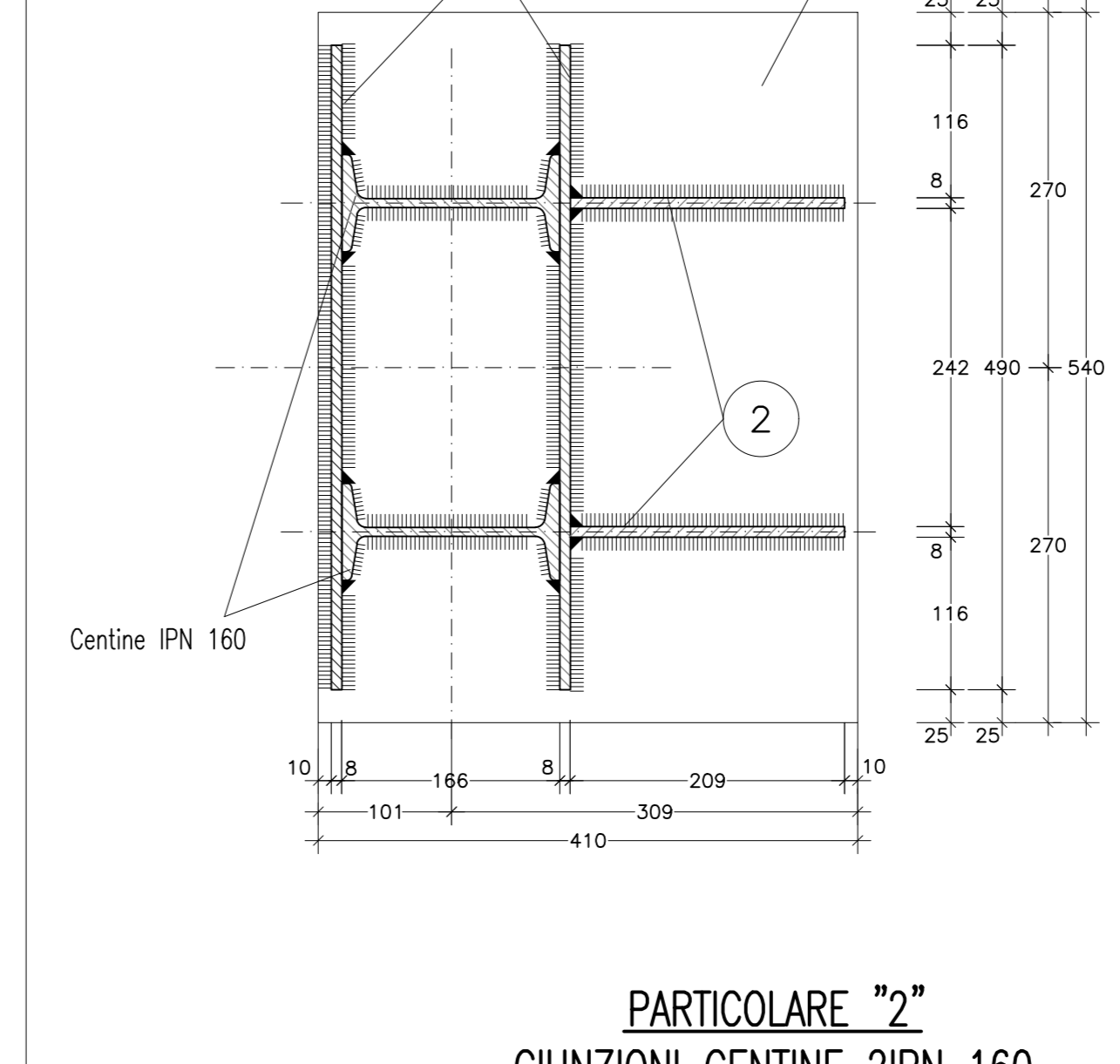
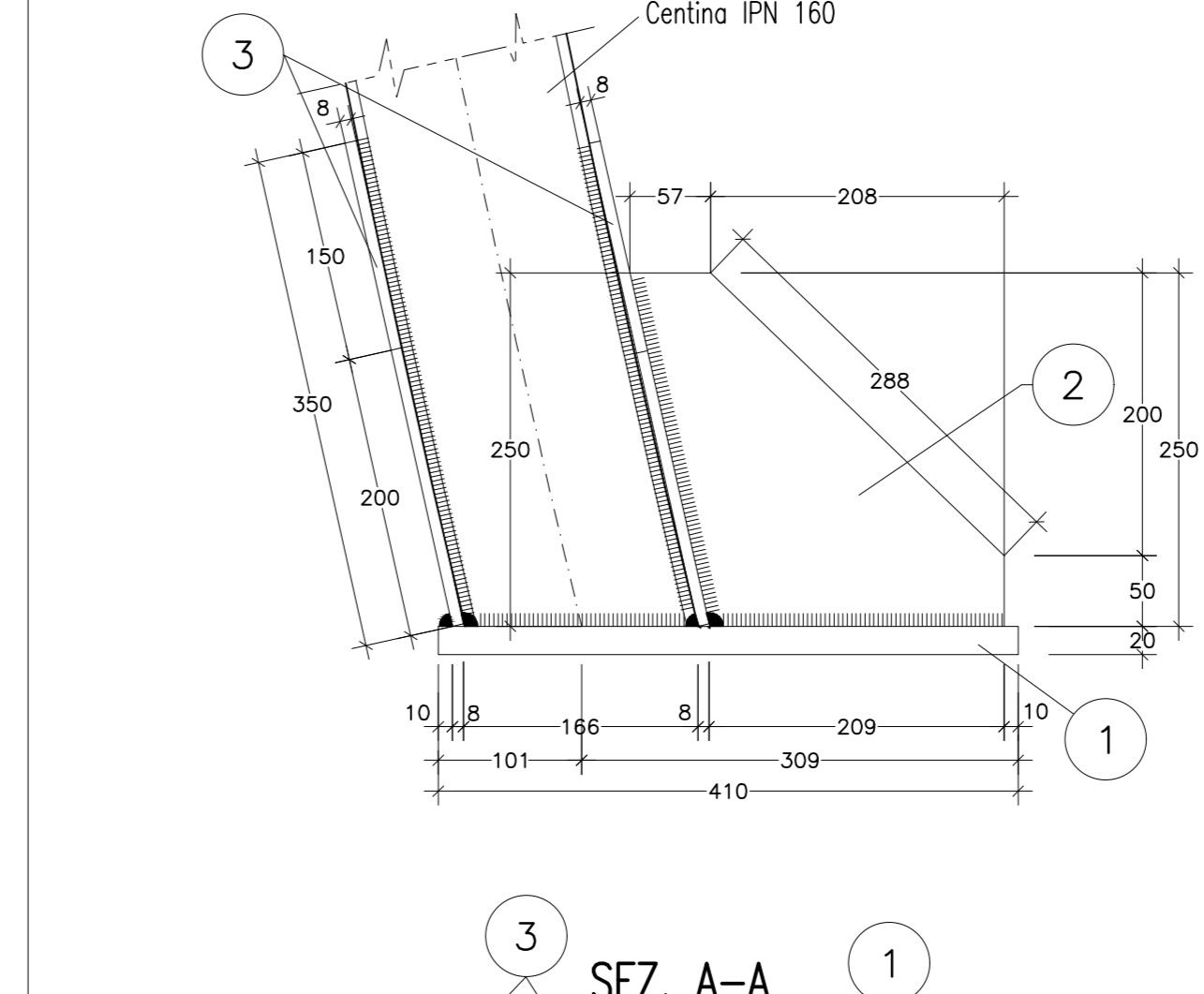
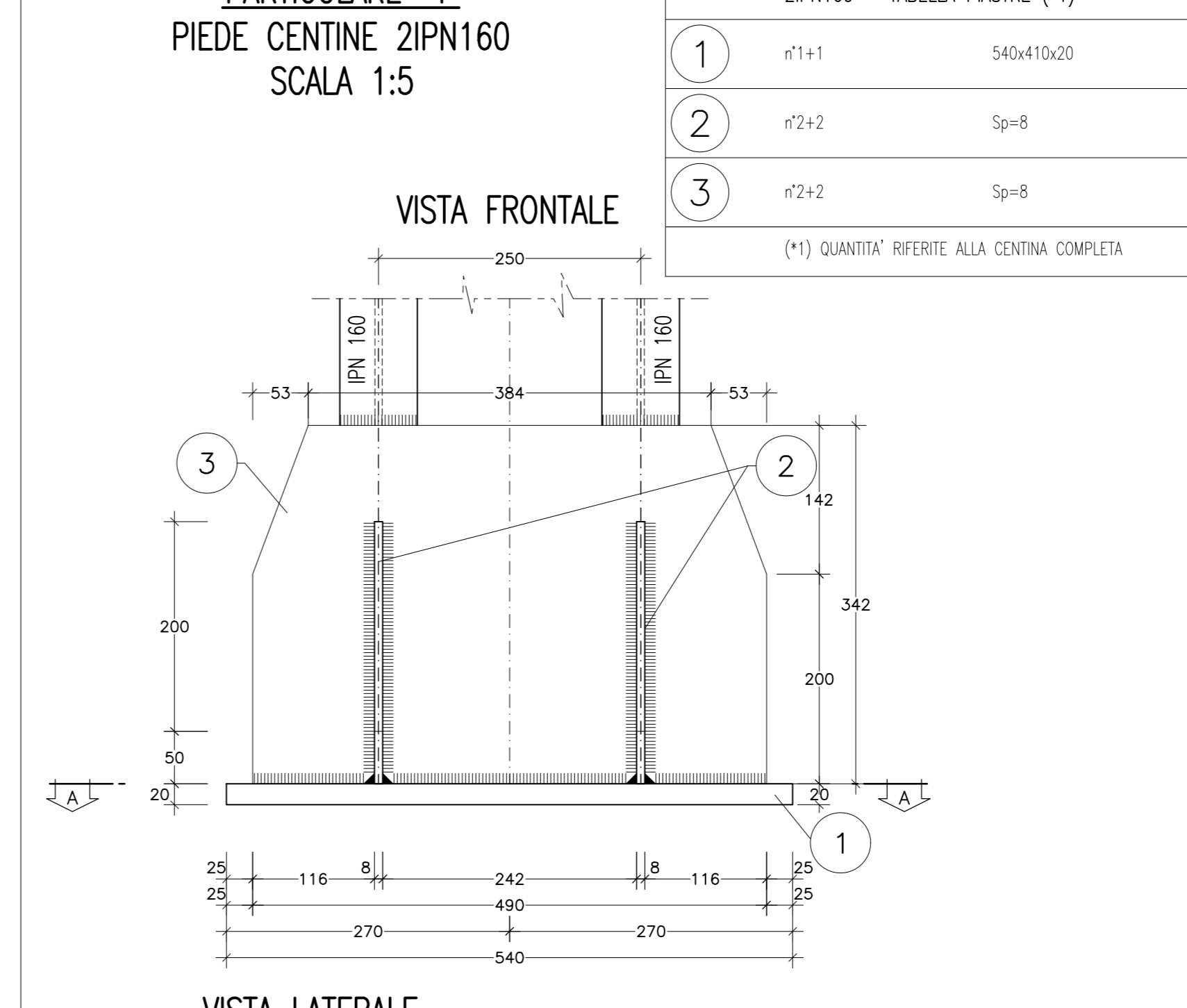


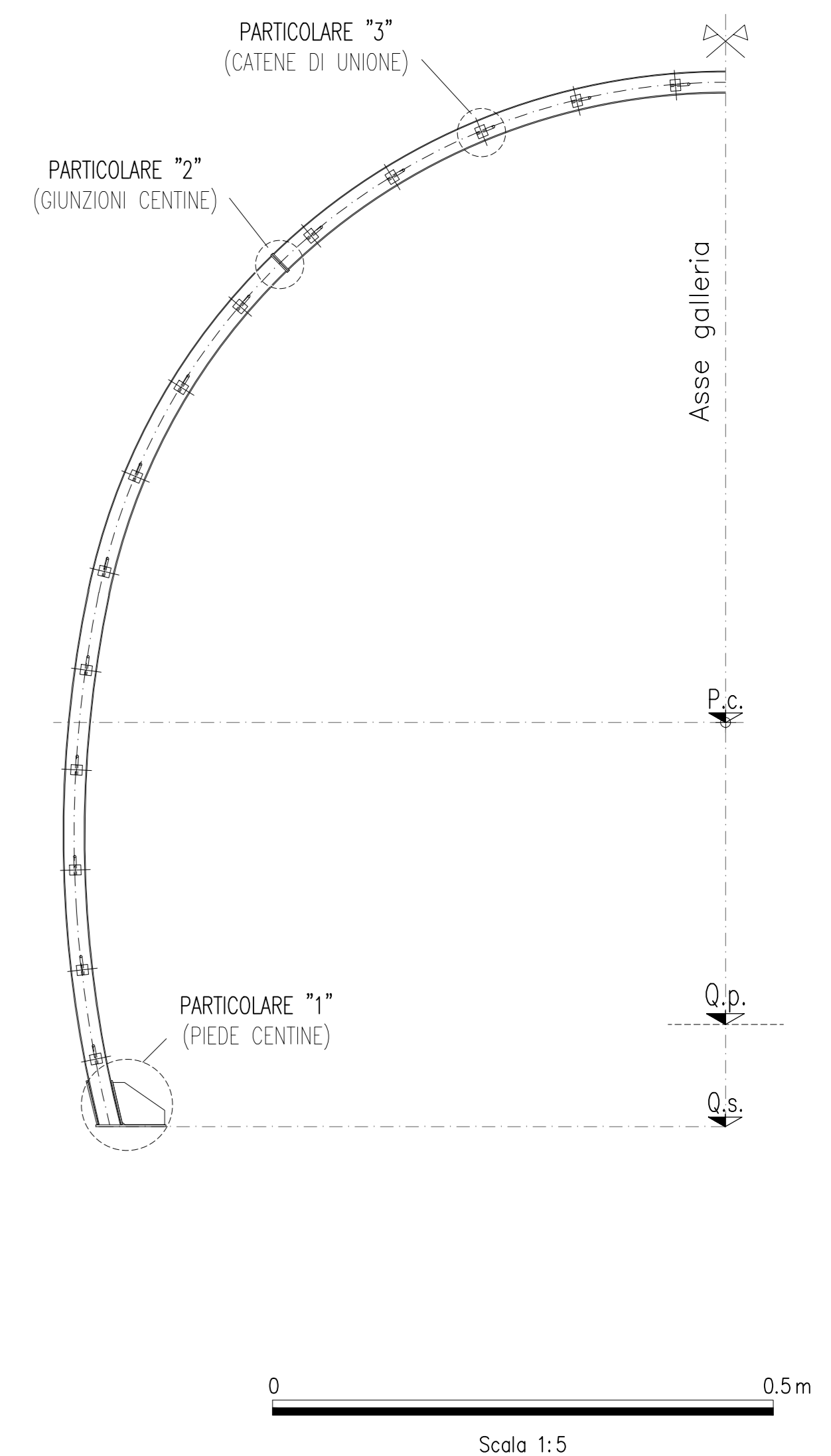
TABELLA MATERIALI	
ACCIAIO	S 275
- ACCIAIO CENTINE/PROFILATI	S 275
- ACCIAIO PIASTRE	B 375 C
- BULLONI PIASTRE UNIONE CENTINE	Classe 8.8
- ACCIAIO FRAZZOLETTI	S 275

NOTE	
-	LE MISURE E GLI SVILUPPI DELLE CENTINE SONO CALCOLATI RISPETTO AI LORO ASSI, AL NETTO DELLE PIASTRE.
-	LE MISURE SONO ESPRESSE IN MILLIMETRI
-	PER LE TOLLERANZE DI COSTRUZIONE VEDI RELAZIONE TECNICA
-	EVENTUALI DIFFERENZE TRA LE MISURE TOTALI E LE SOMMATORIE DELLE MISURE PARZIALI SONO DOVUTE AGLI ARROTONDAMENTI AUTOMATICI DI AUTOCAD

LEGENDA	
Q.p.	= QUOTA PROGETTO
Q.s.	= QUOTA DI SCAVO
P.c.	= PIANO DEI CENTRI

NOTA BENE	
-	I PARTICOLARI SONO VALIDI PER TUTTE LE CENTINE IN PROGETTO A PARTIRI DI PROFILATO - LE MISURE SONO ESPRESSE IN MILLIMETRI

SCHEMA DISPOSIZIONE PARTICOLARI



AUTOSTRADA VALDASTICO A31 NORD
1° LOTTO
Piovene Rocchette - Valle dell'Astico

PROGETTO DEFINITIVO

COMITENTE: S.p.A. AUTOSTRADA BRESCIA VERONA VICENZA PADOVA Area Costruzioni Autostradali

PROGETTAZIONE: CONSORZIO RAETIA

ELABORATO: OPERE D'ARTE MAGGIORI OPERE IN SOTTERRANEO - GALLERIE CON SCAVO TRADIZIONALE GALLERIA DI LINEA E BY PASS CARRABILI - PARTICOLARI CENTINE

Rev. Data Descrizione Revisione Controllo Approvazione

07_02_01_029_02