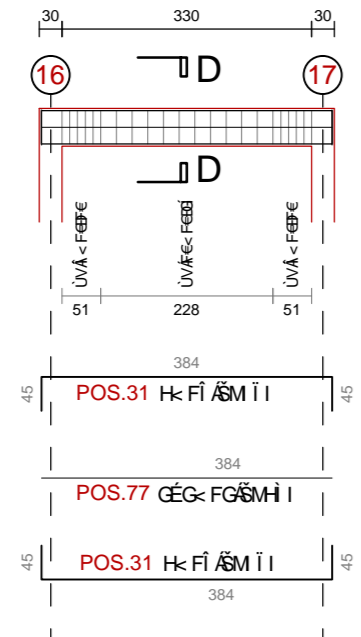
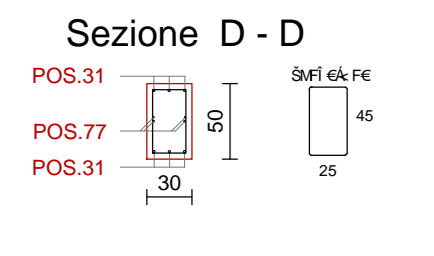
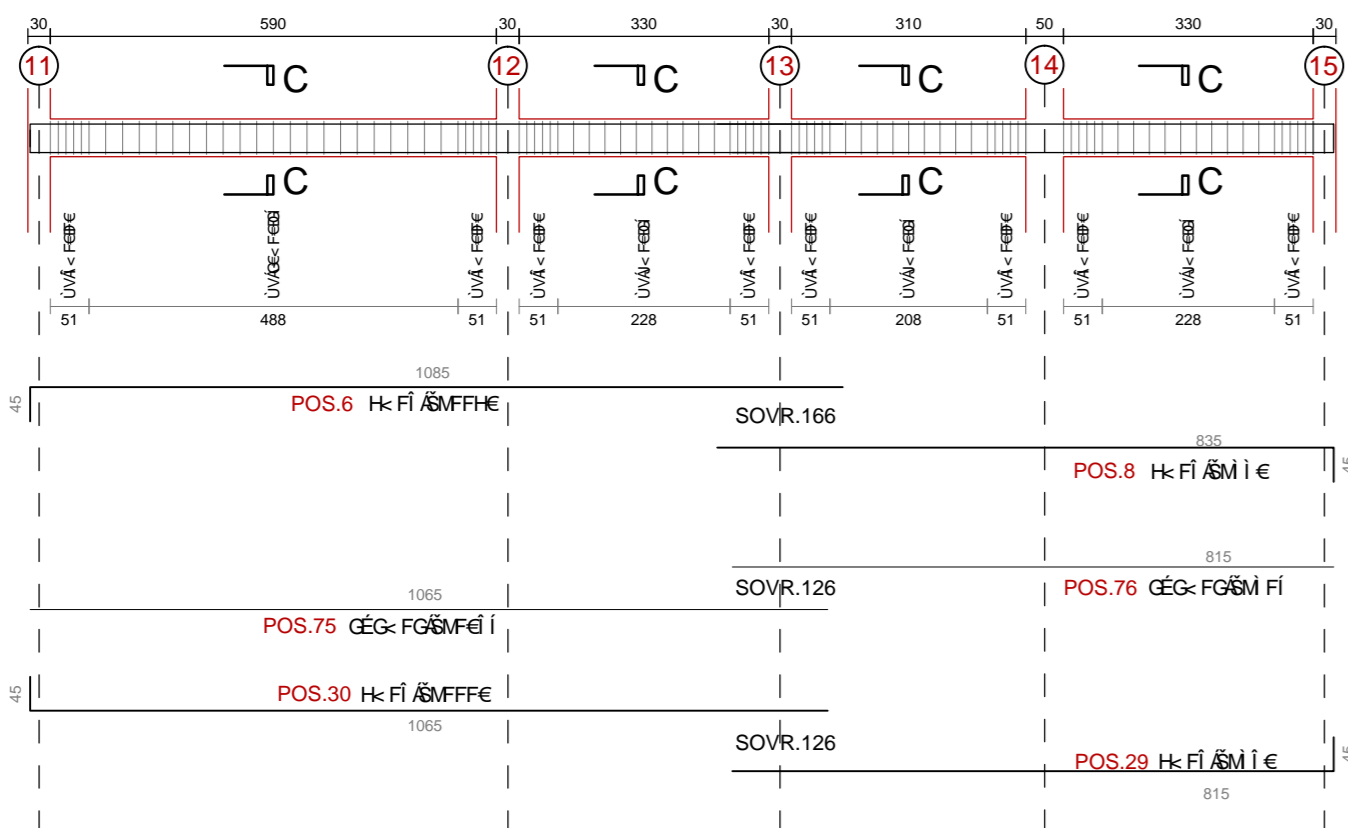
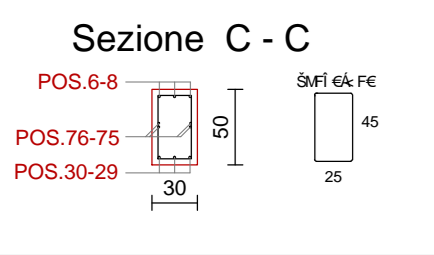


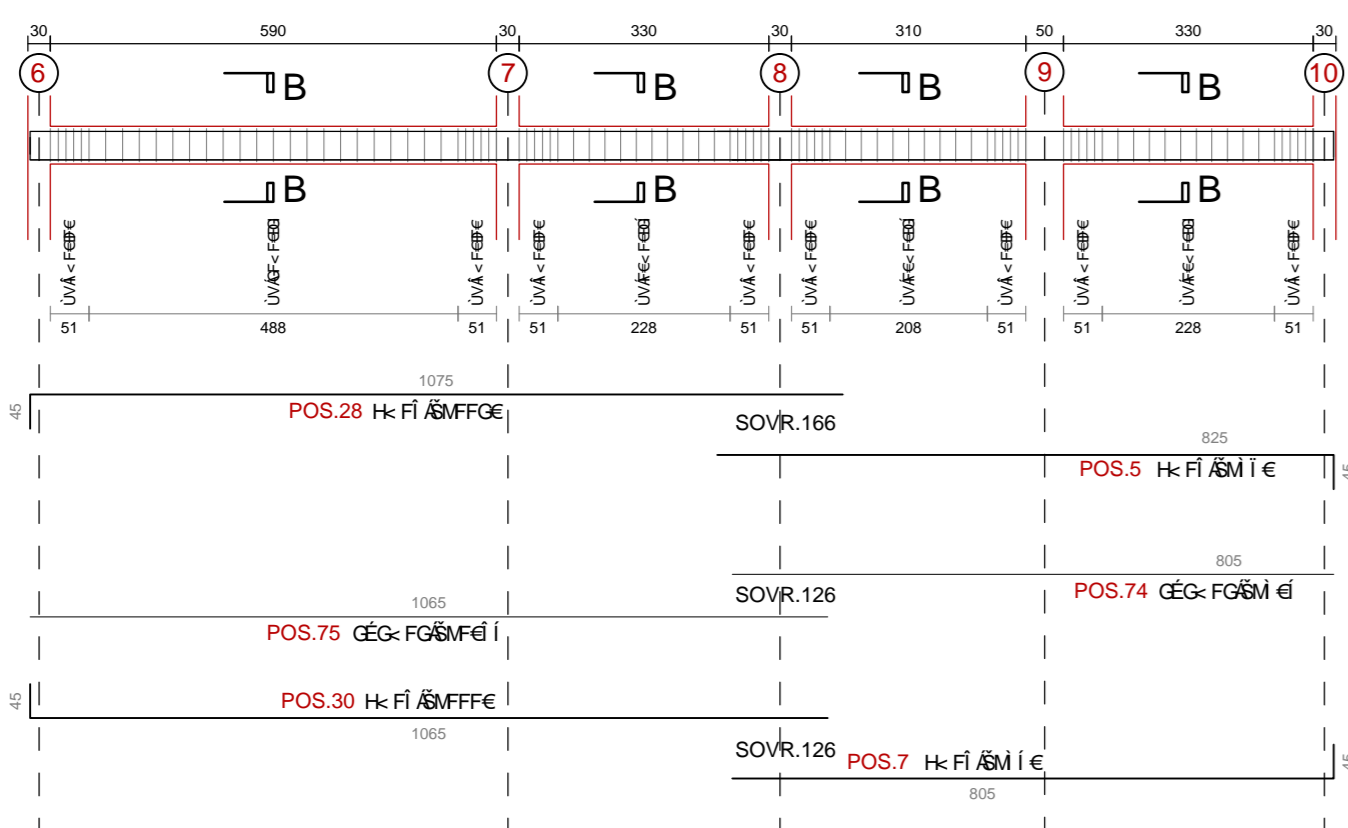
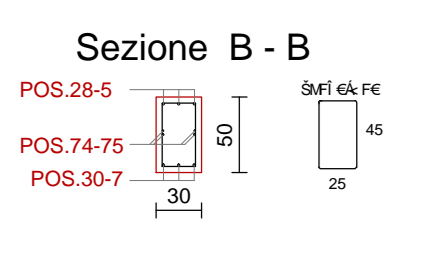
TRAVATA 4



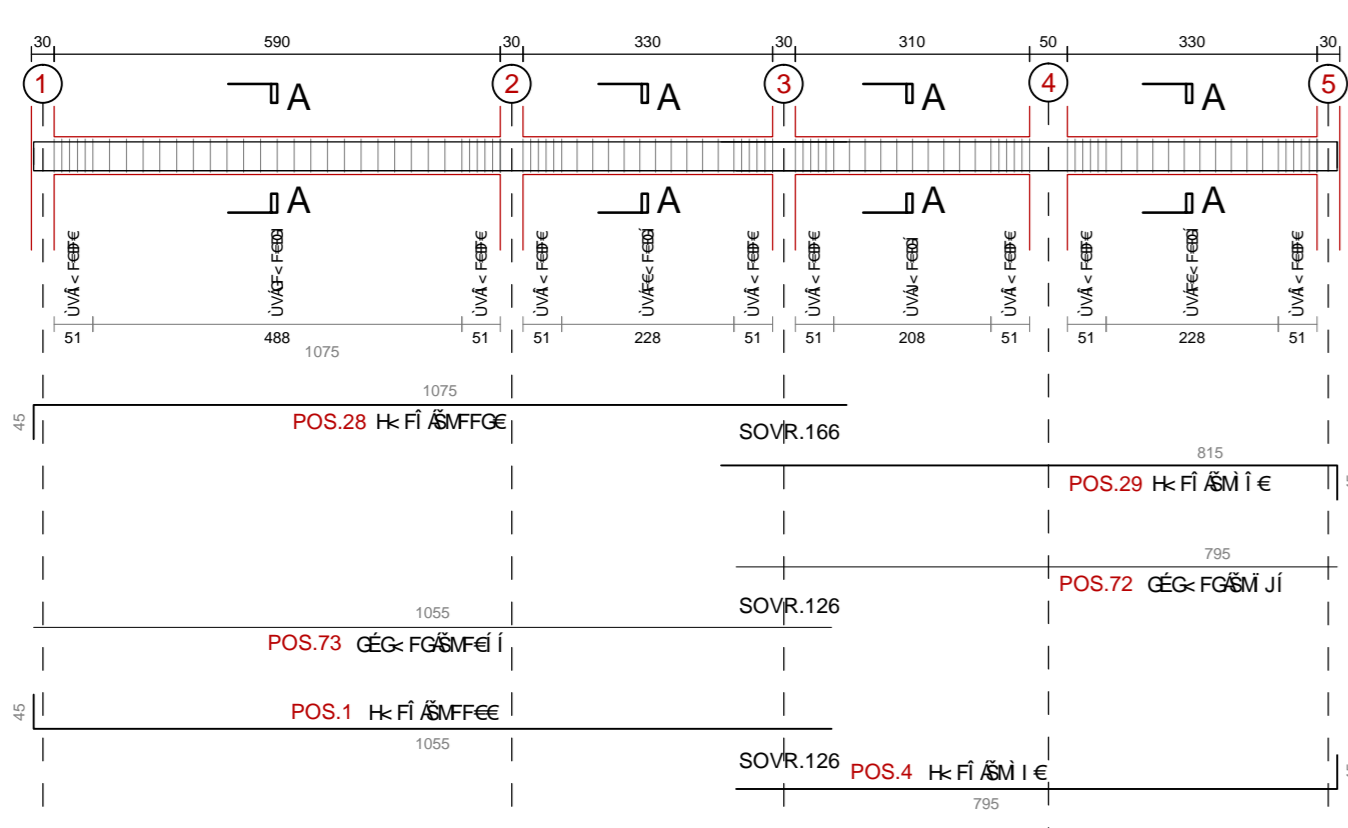
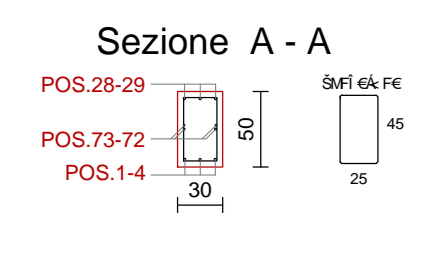
TRAVATA 3



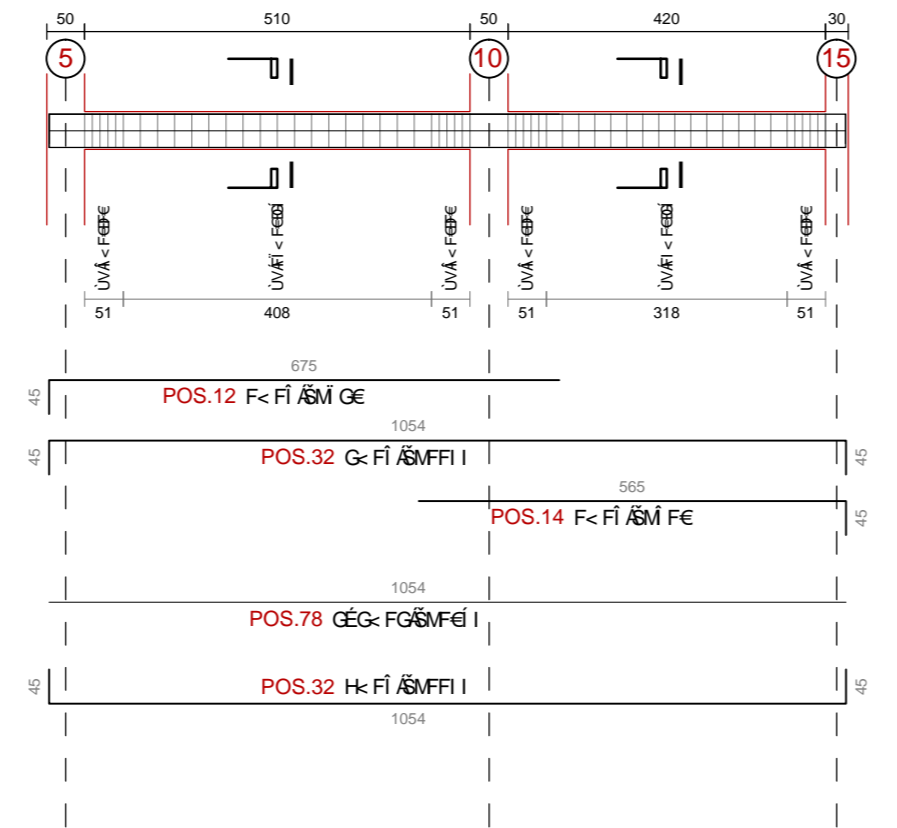
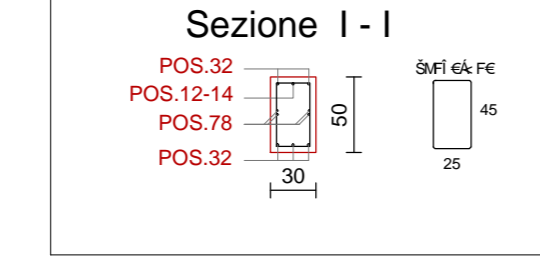
TRAVATA 2



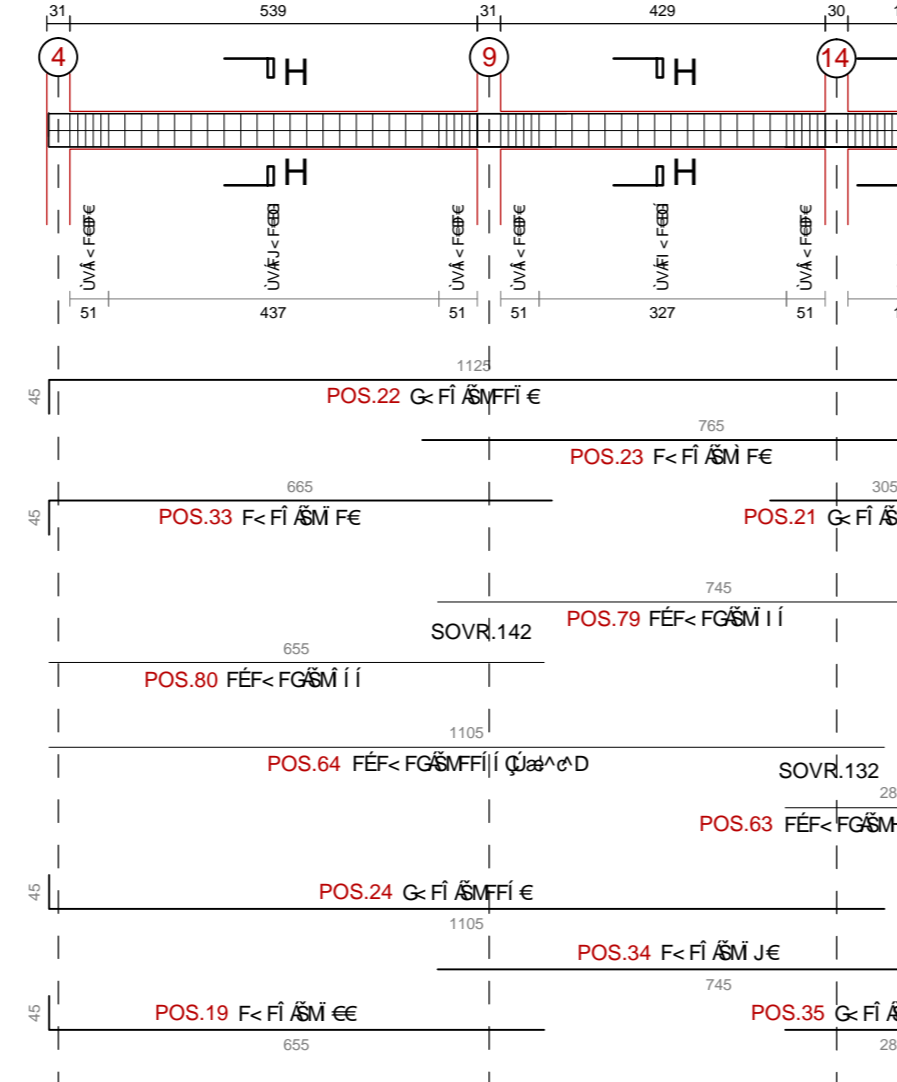
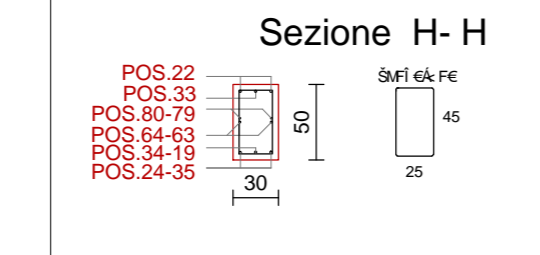
TRAVATA 1



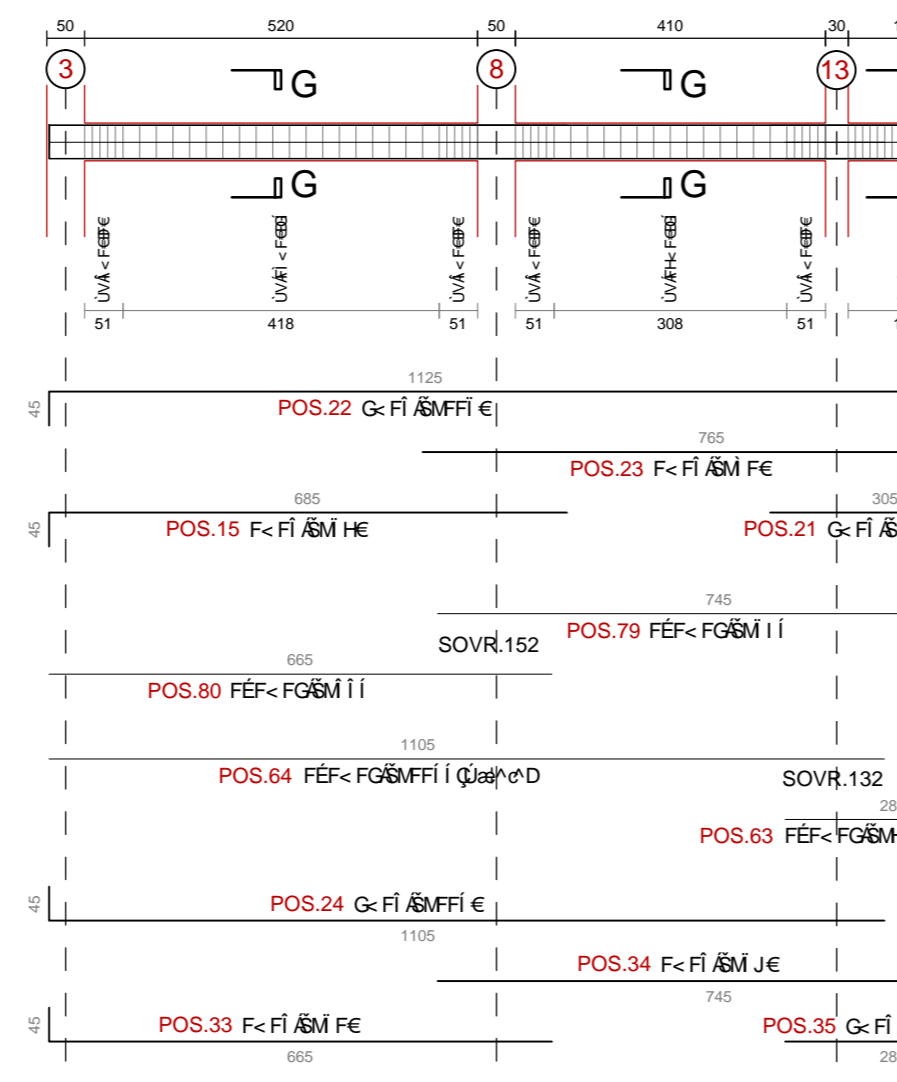
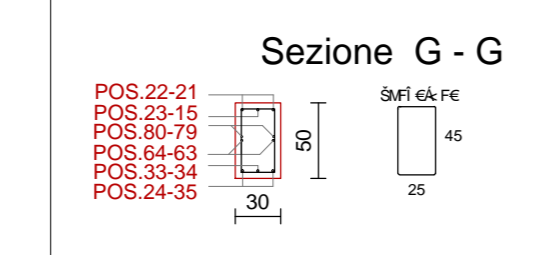
TRAVATA 9



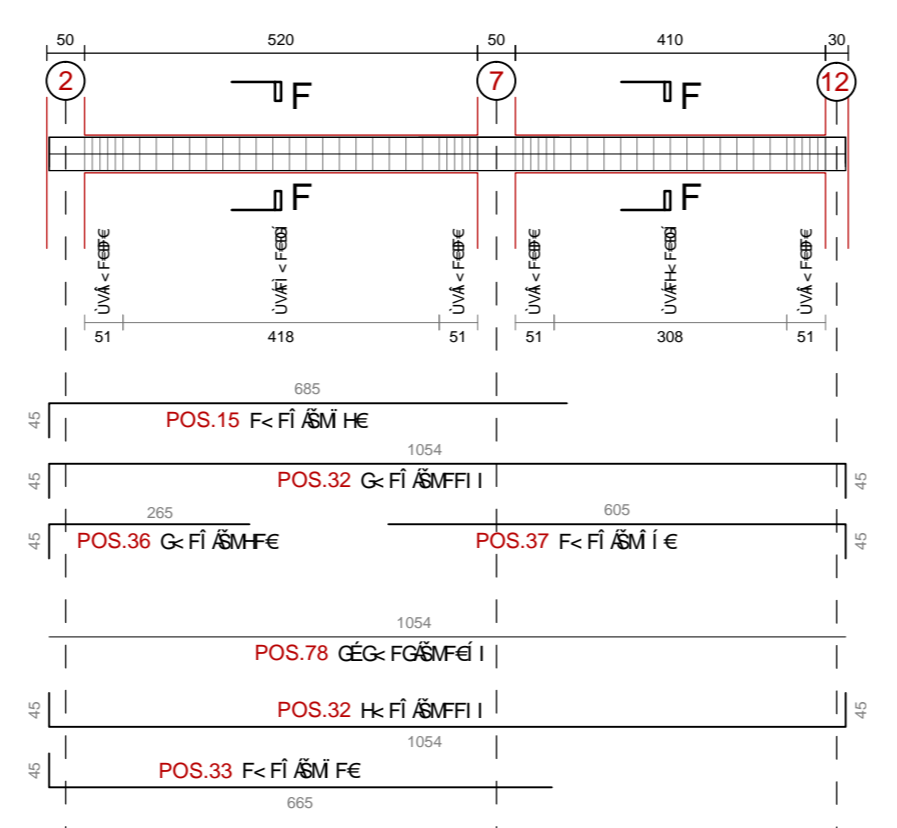
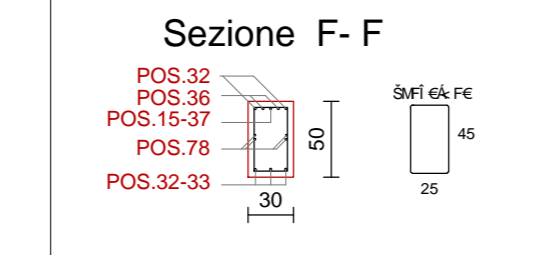
TRAVATA 8



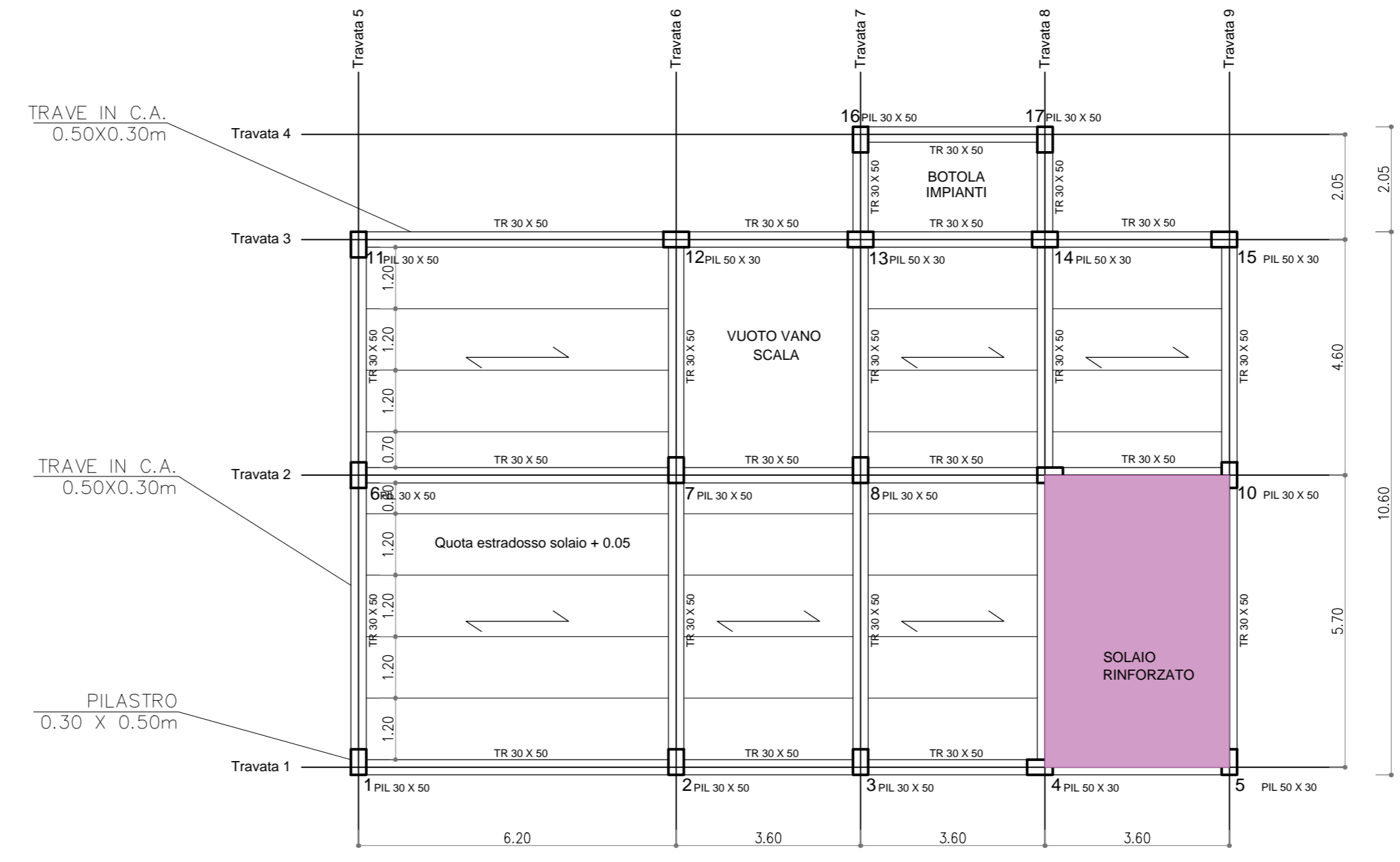
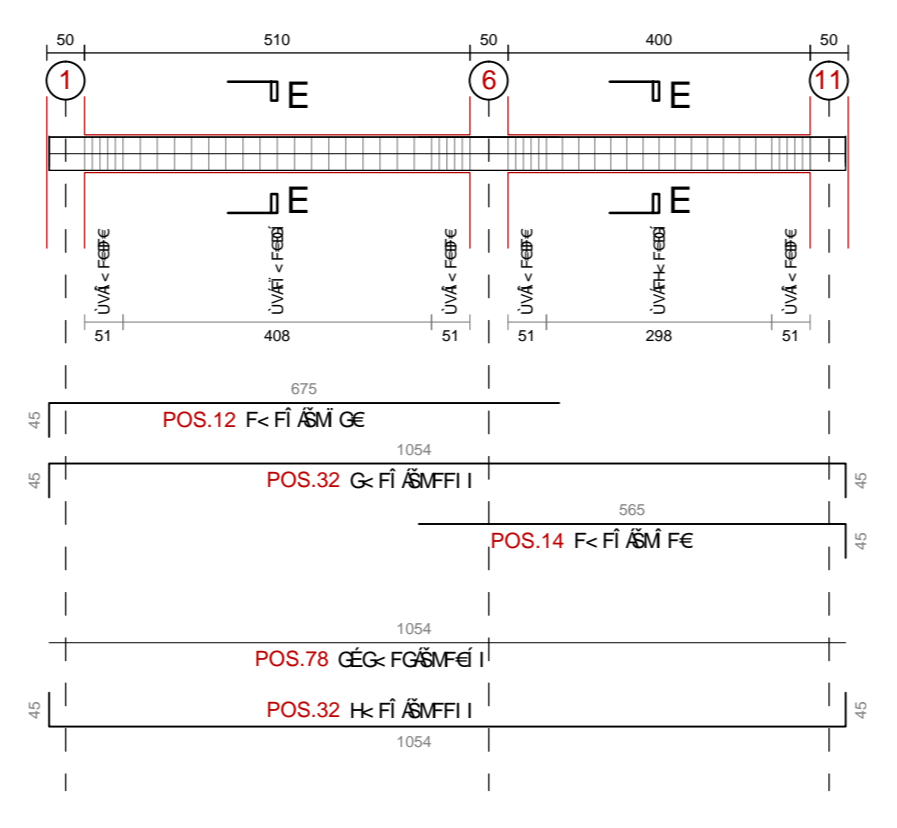
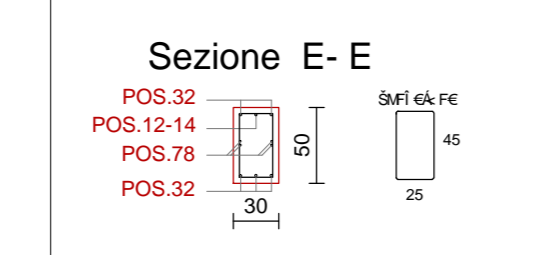
TRAVATA 7



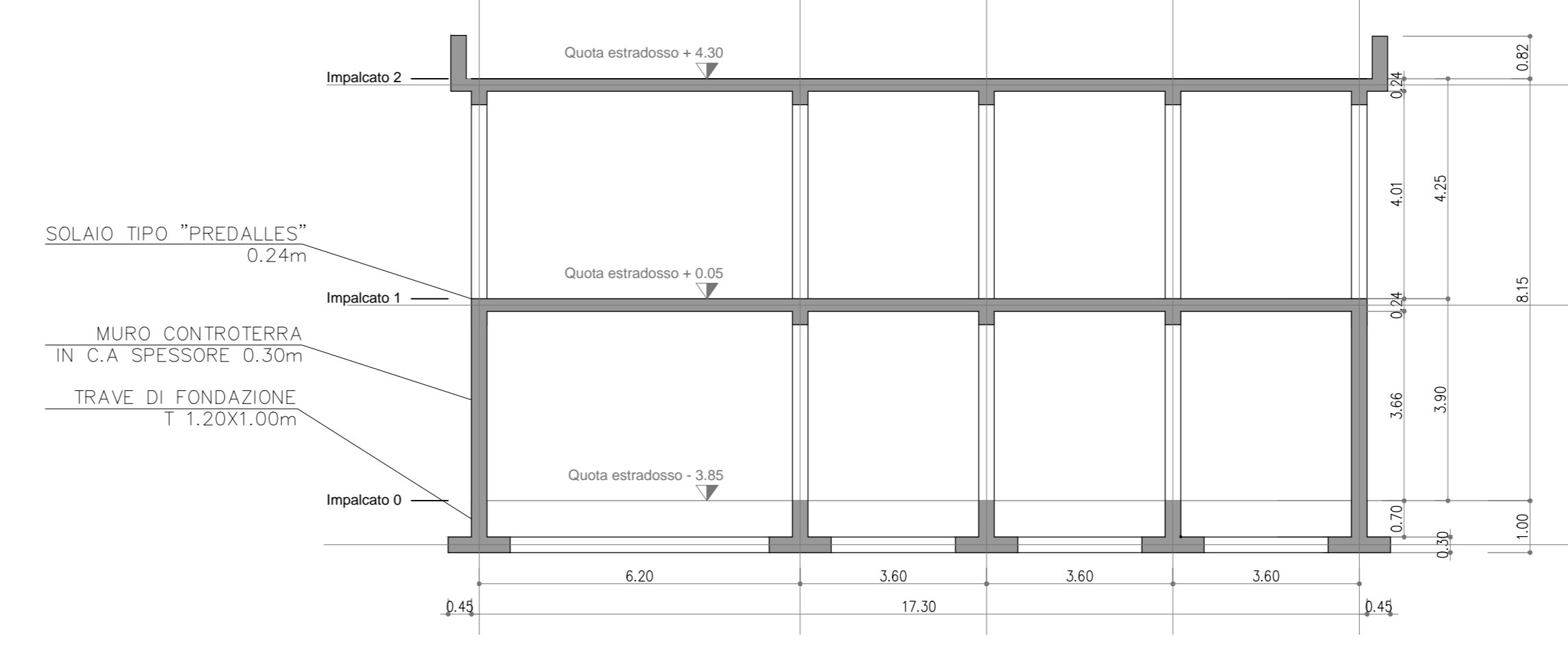
TRAVATA 6



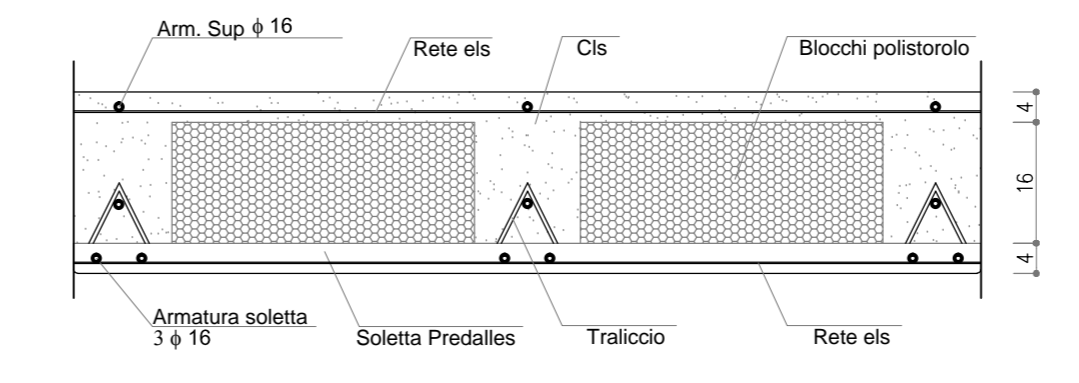
TRAVATA 5



SEZIONE SCHEMATICA SCALA 1:100



PARTICOLARE DEL SOLAIO RINFORZATO SCALA 1:10



PARTICOLARE DEL SOLAIO TIPO SCALA 1:10

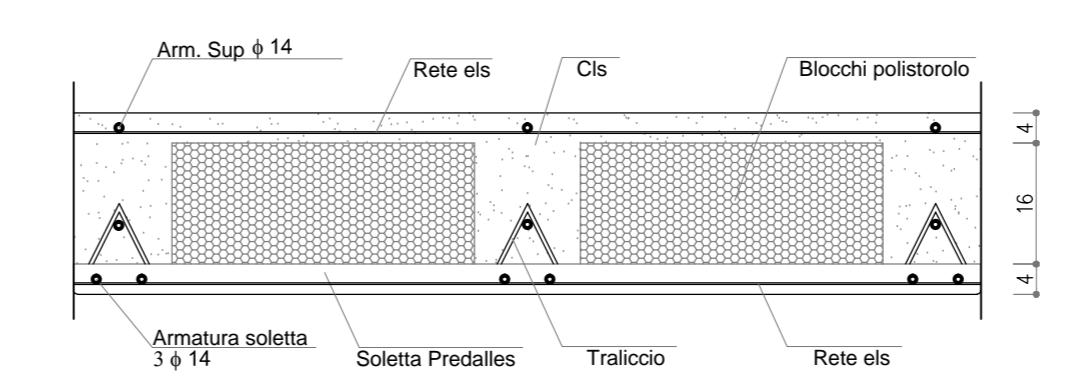


TABELLA MATERIALI

CALCESTRUZZO	FONDAZIONI E GETTI CONTOTERRA	
	CLASSE DI RESISTENZA C 25-30	
	MASSIMO RAPPORTO A/C ≤ 0.55	
	CLASSE DI CONSISTENZA S4	
	DIAMETRO MAZ AGGREGATI 20 mm	
	CLASSE DI ESPOSIZIONE X C2	
ELEVAZIONE E SOLETTE		
	CLASSE DI RESISTENZA C 25-30	
	MASSIMO RAPPORTO A/C ≤ 0.60	
	CLASSE DI CONSISTENZA S4	
	DIAMETRO MAZ AGGREGATI 25 mm	
	CLASSE DI ESPOSIZIONE X C3	
ACCIAIO PER C.A.	FONDAZIONI E GETTI CONTOTERRA	
	ACCIAIO IN BARRE AD ADERENZA MIGLIORATA B450C	
	COPRIFERRO PER ELEVAZIONE 30 mm	
	COPRIFERRO PER FONDAZIONE 50 mm	
	SOVRAPPORZIONE MINIMA PARI A 20 DIAMETRI	
INCIDENZA ARMATURA TRAVI		
	MINIMA PERCENTUALE ARMATURA RISPETTO AL CLS	0.31%
	MASSIMA PERCENTUALE ARMATURA RISPETTO AL CLS	1.55%

AUTOSTRADA VALDASTICO A31 NORD
1° LOTTO
Piovene Rocchette - Valle dell'Astico

PROGETTO DEFINITIVO

COMITENTE: S.p.A. AUTOSTRADA BRESCIA VERONA VICENZA PADOVA Area Costruzioni Autostradali

CAPO COMMESSA PER LA PROGETTAZIONE: Dott. Ing. Gabriele Costantini

PRESTATORE DI SERVIZI: CONSORZIO RAETIA

RESPONSABILE QUANTIFICAZIONE TRAVEGGI: Ing. Roberto Perino

PROGETTAZIONE: ING. ENRICO POMA

ELABORATO: EDIFICI E STRUTTURE A CORREDO CASELLO DI PEDEMONTE STRUTTURALE EDIFICIO CASELLO - IMPALCATO 1 - CARPENTERIE E ARMATURE

Revisioni:

Rev.	Data	Descrizione	Redazione	Controllo	Approvazione	SCALA: 1:100
01	09/02/2002	PRIMA EMISSIONE	ING. ENRICO POMA	ING. ENRICO POMA	ING. ENRICO POMA	J16L1_09_02_003_004_00D_02.dwg
02	09/02/2002	REVISIONE PER VERIFICA	ING. ENRICO POMA	ING. ENRICO POMA	ING. ENRICO POMA	J16L1_09_02_003_004_00D_02.dwg
03	09/02/2002	REVISIONE PER VERIFICA	ING. ENRICO POMA	ING. ENRICO POMA	ING. ENRICO POMA	J16L1_09_02_003_004_00D_02.dwg