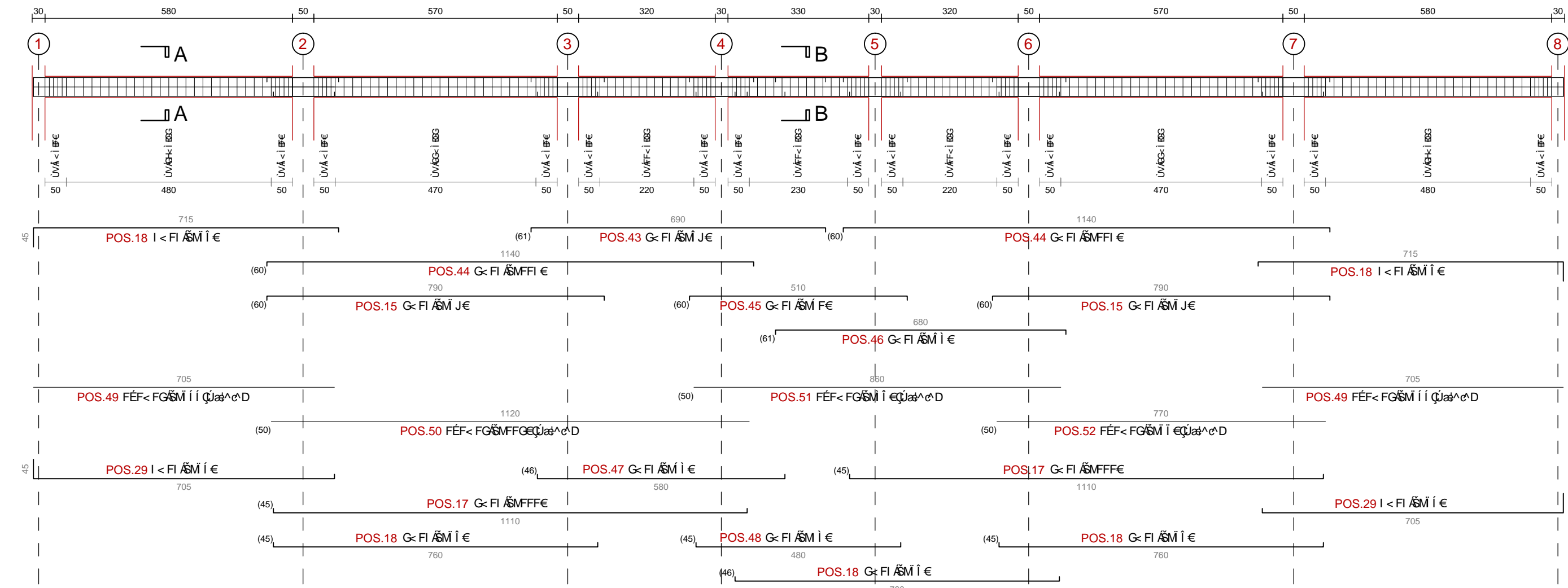
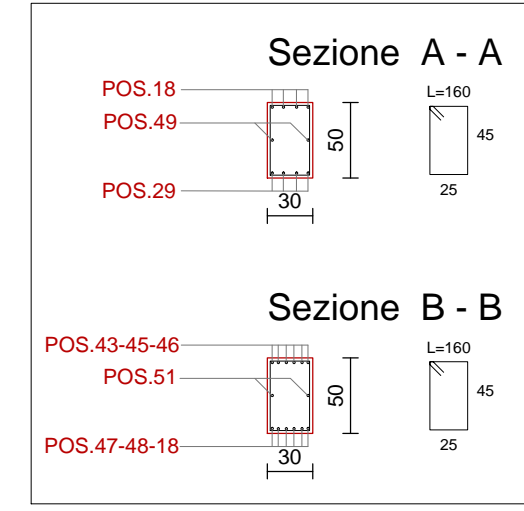
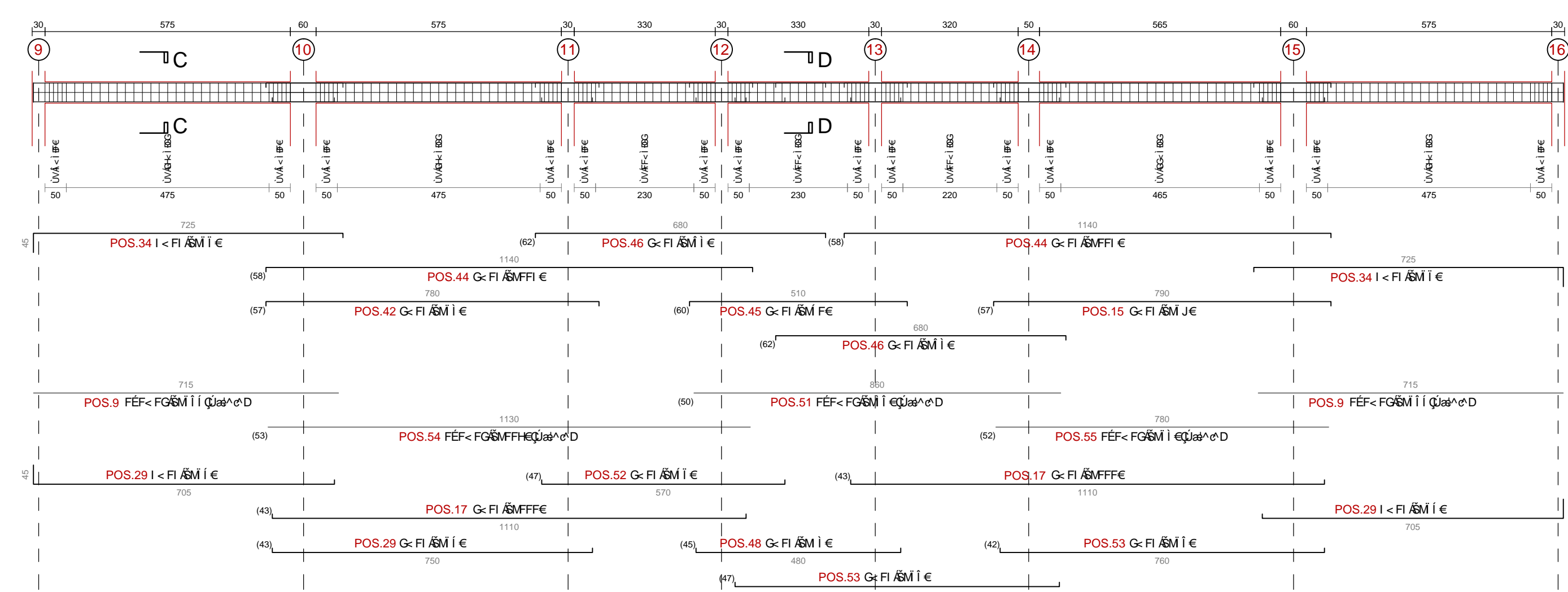
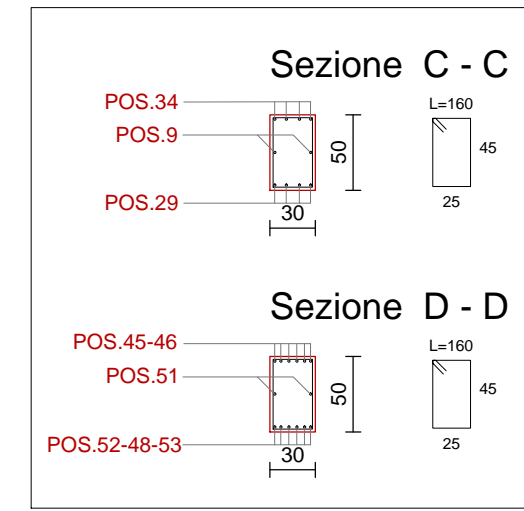


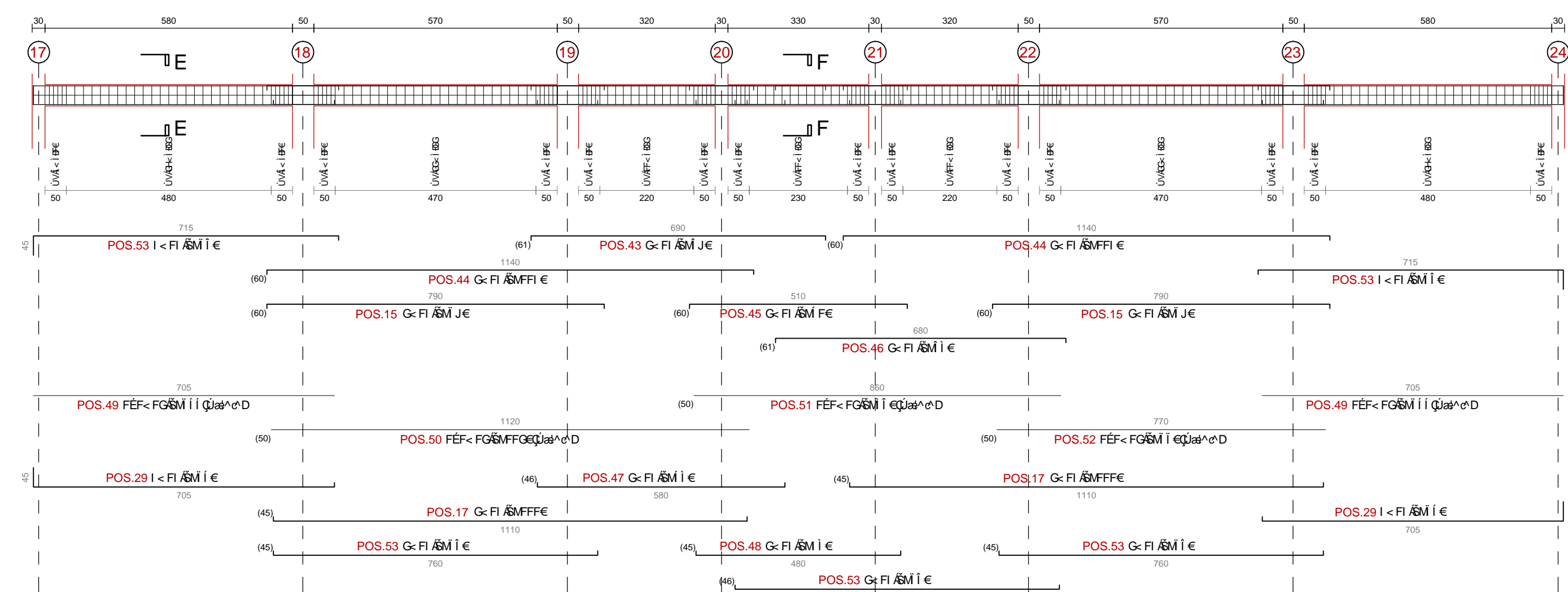
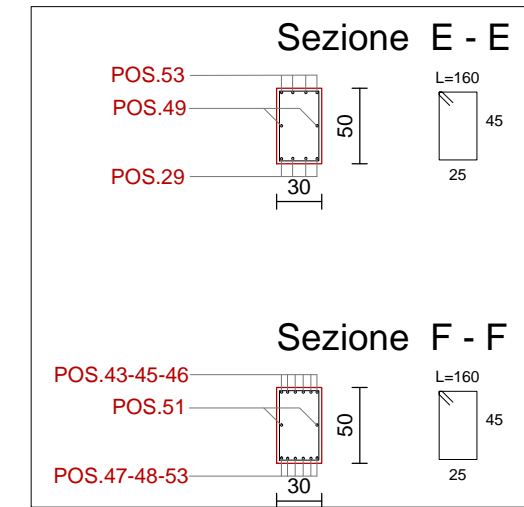
TRAVATA 12



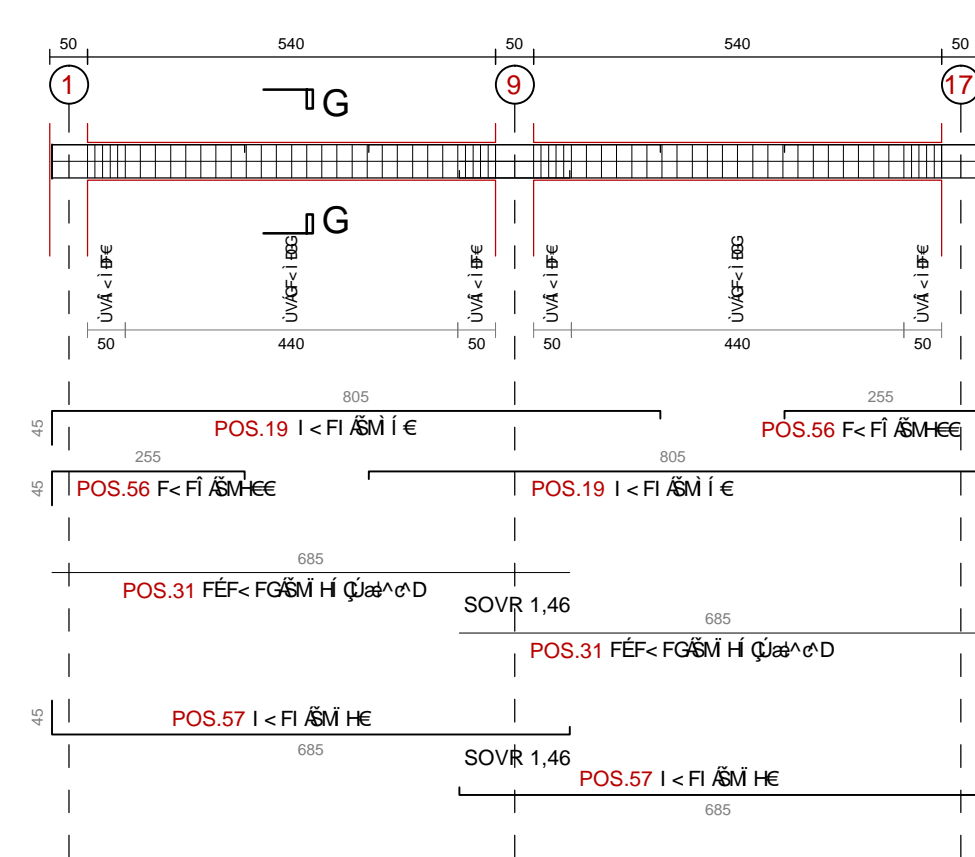
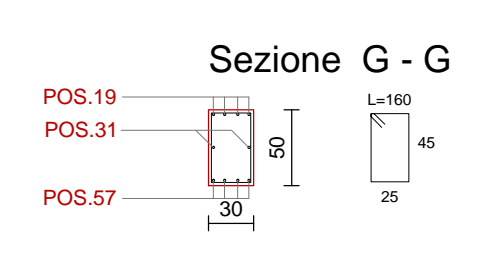
TRAVATA 13



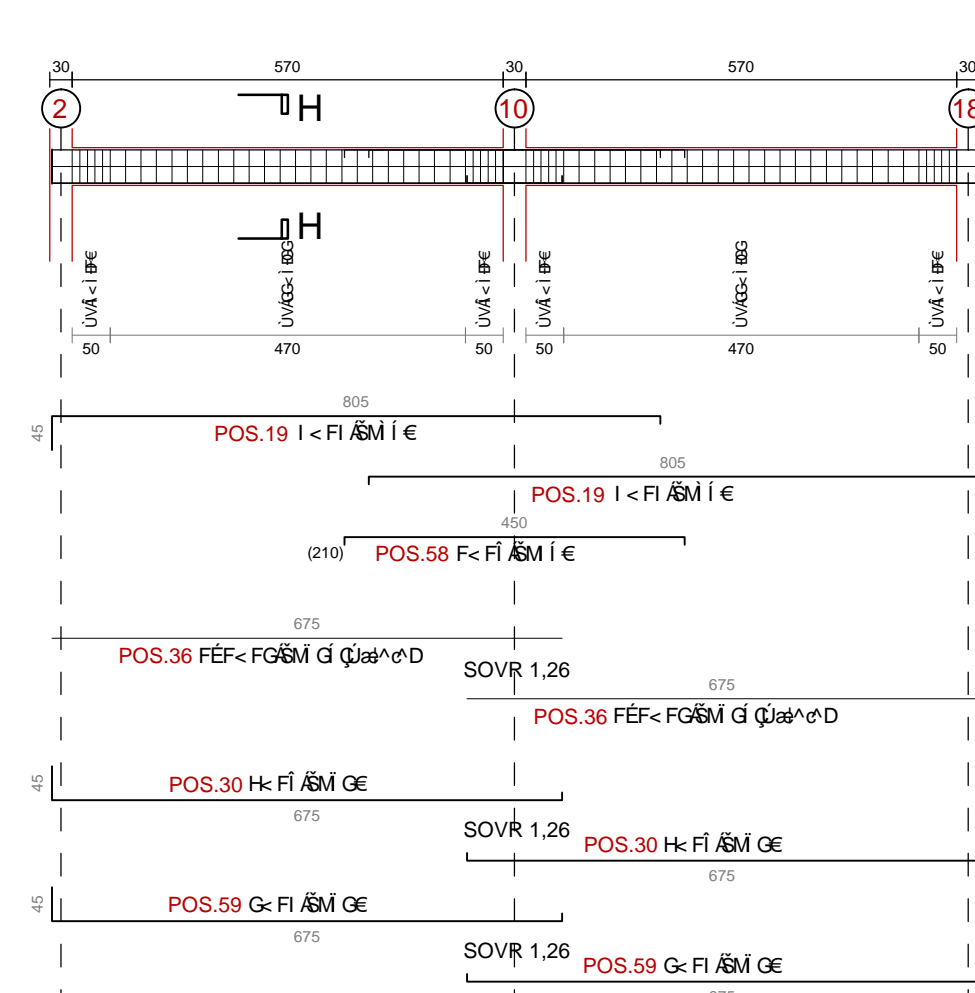
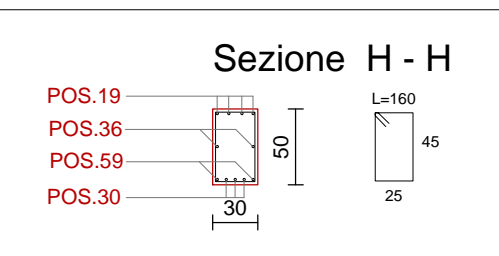
TRAVATA 14



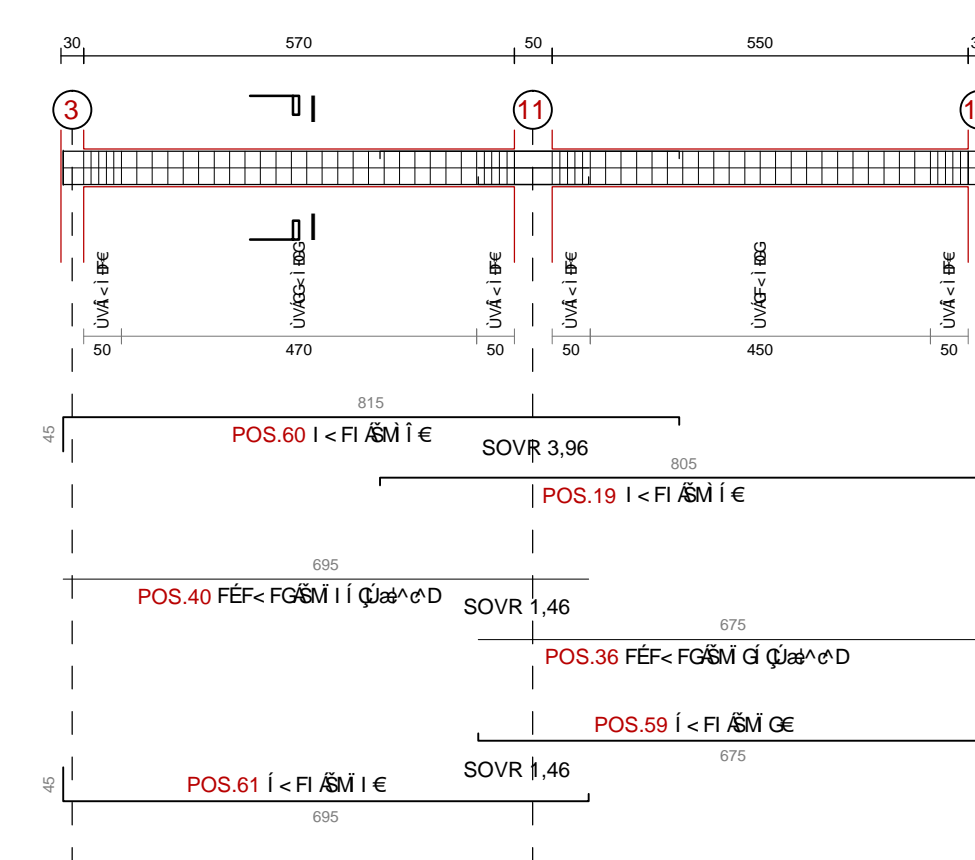
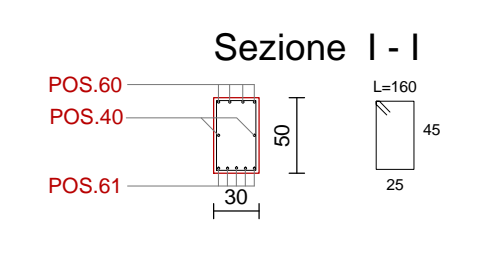
TRAVATA 15



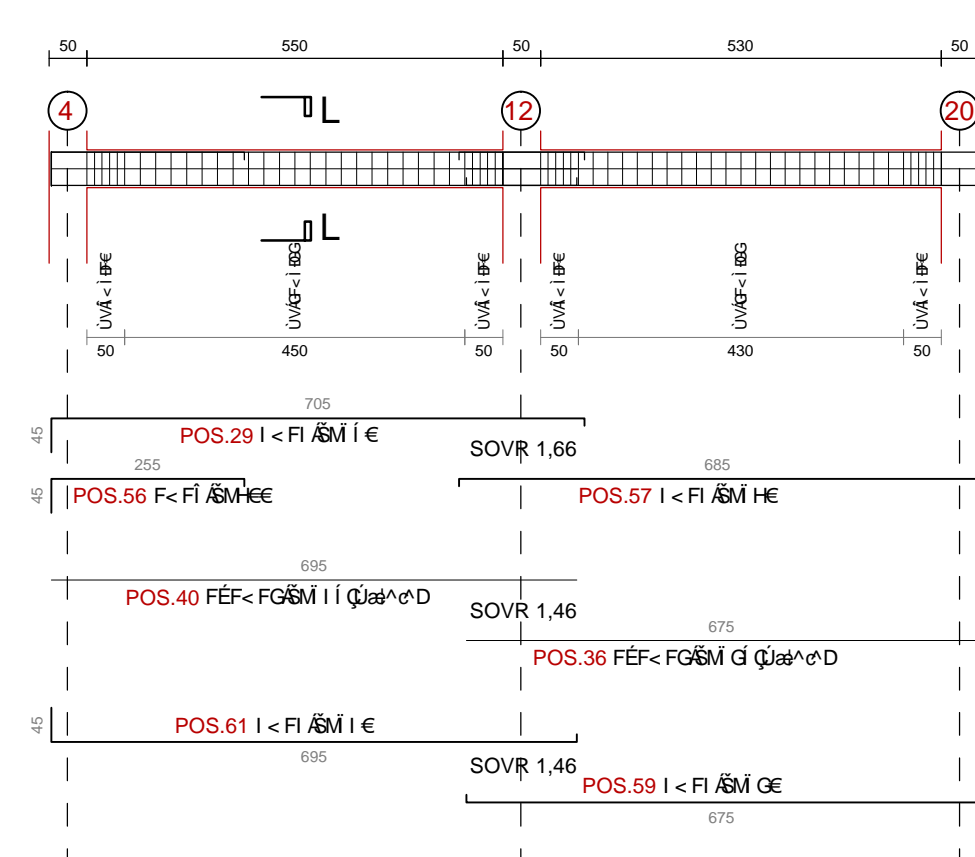
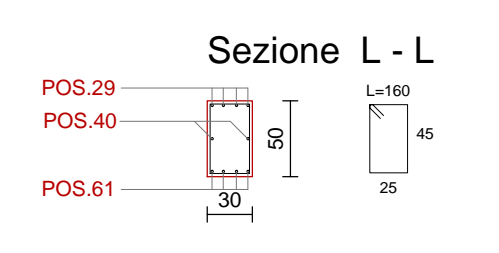
TRAVATA 16



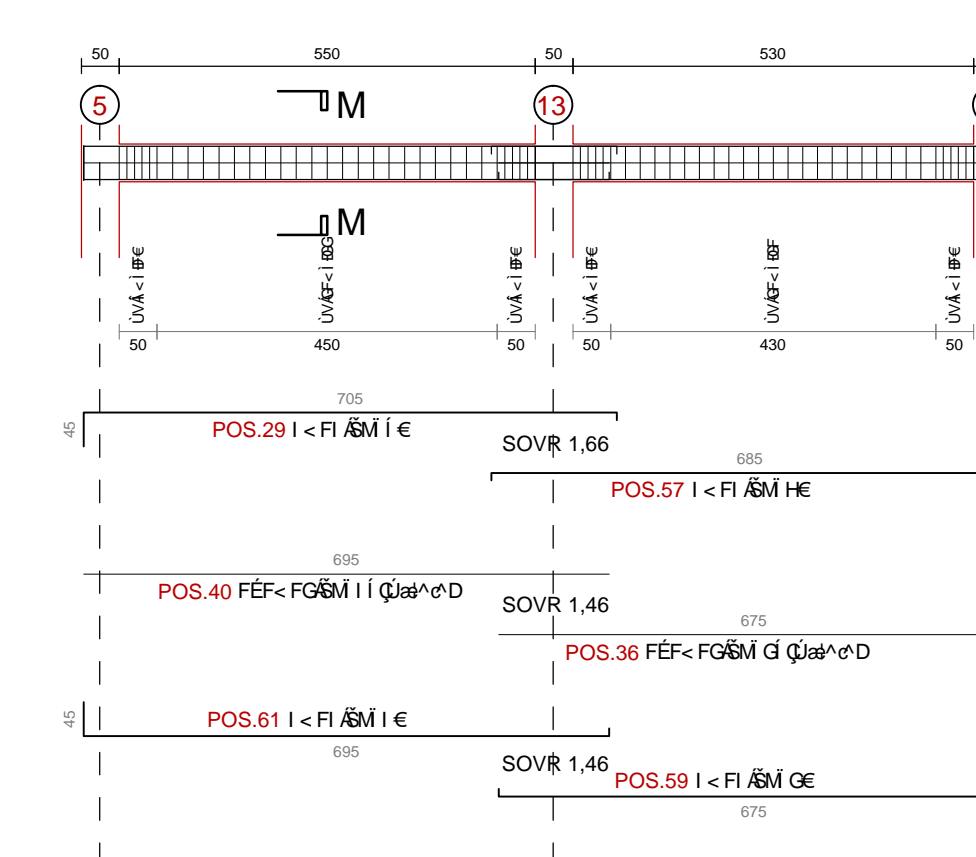
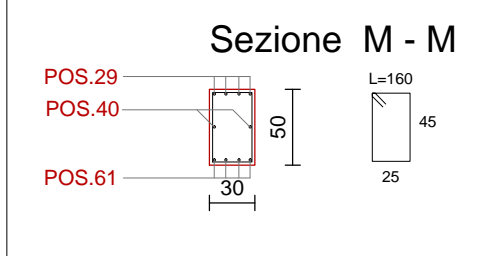
TRAVATA 17



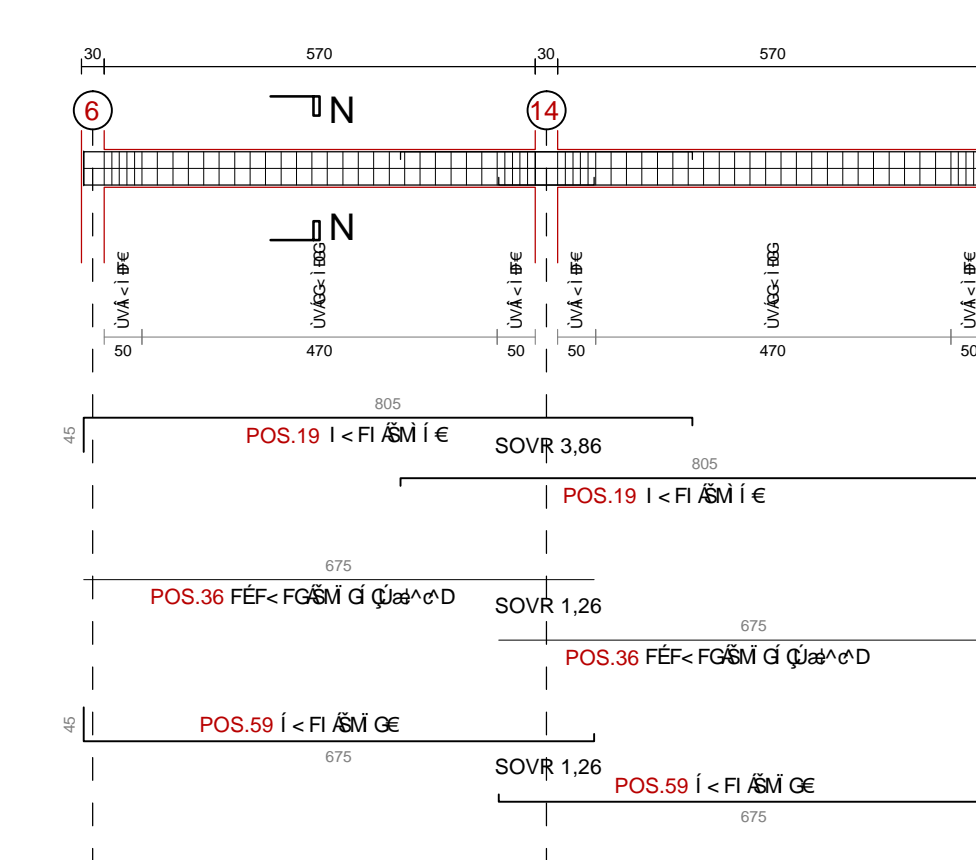
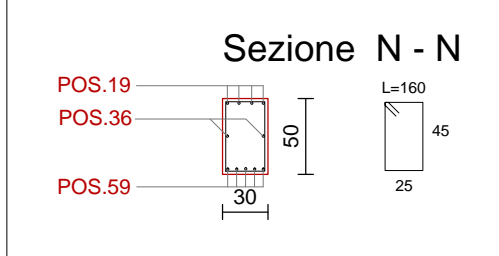
TRAVATA 18



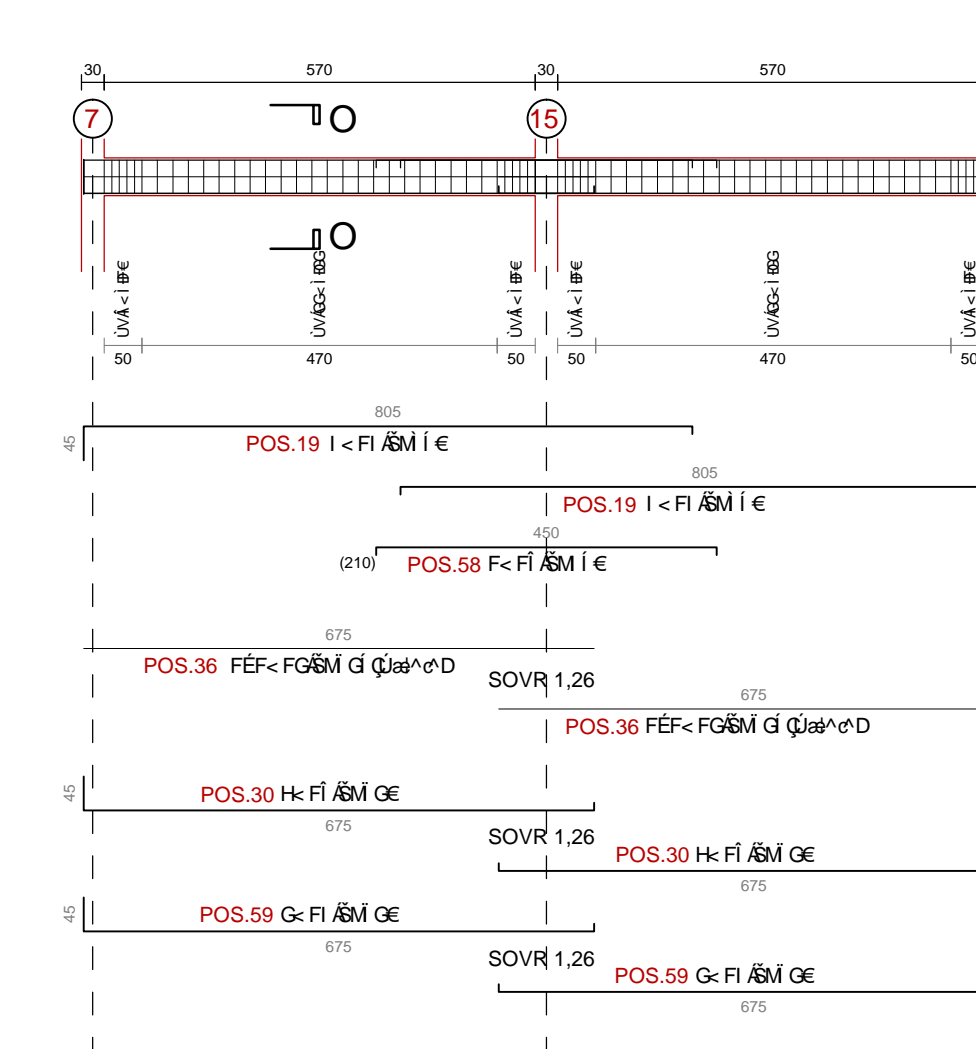
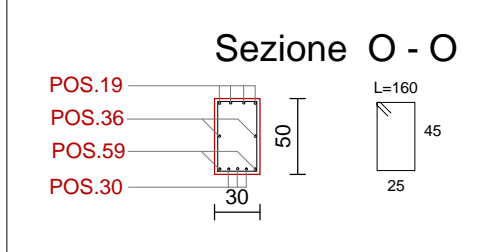
TRAVATA 19



TRAVATA 20



TRAVATA 21



TRAVATA 22

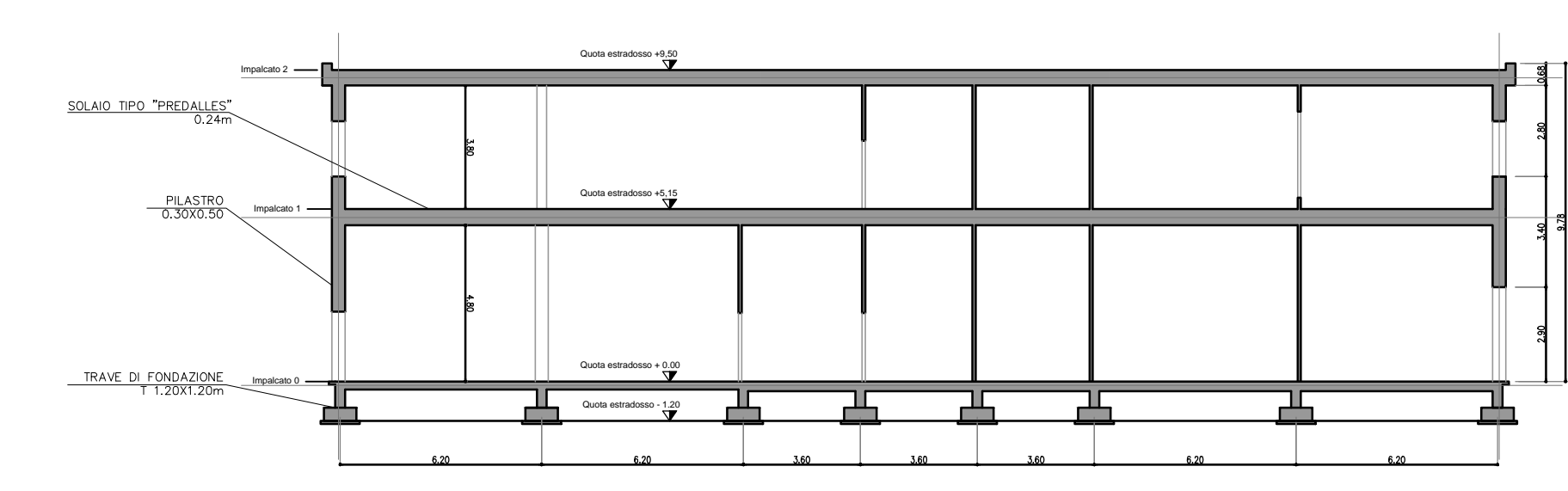
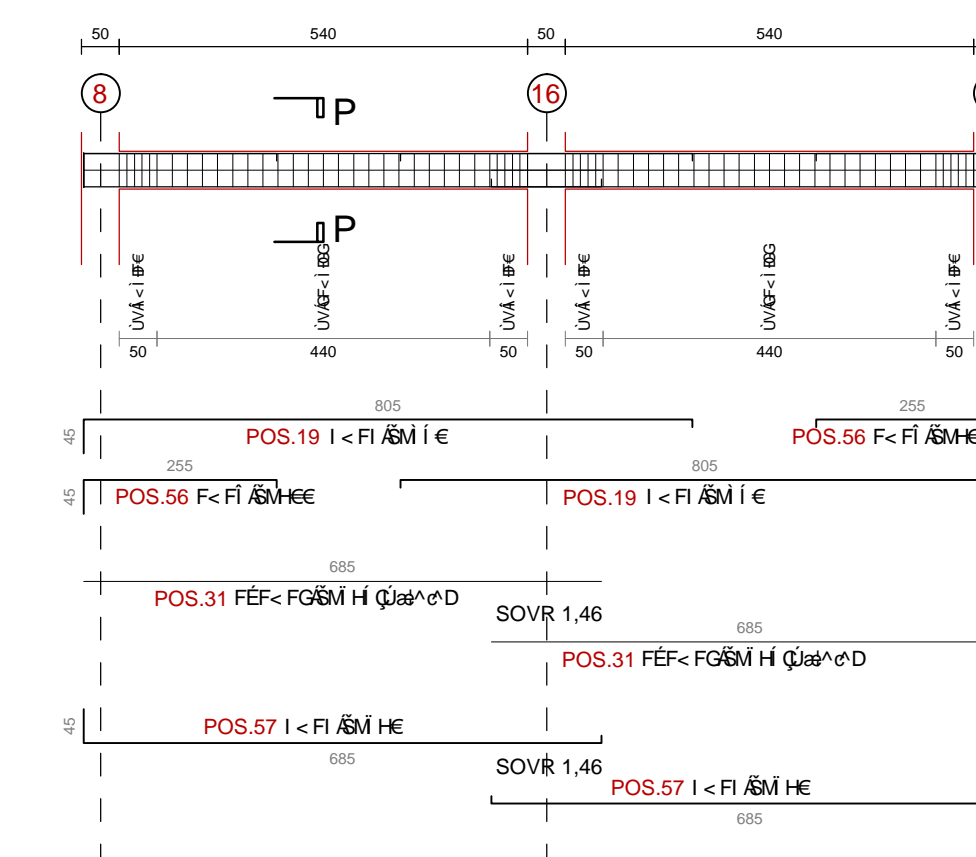
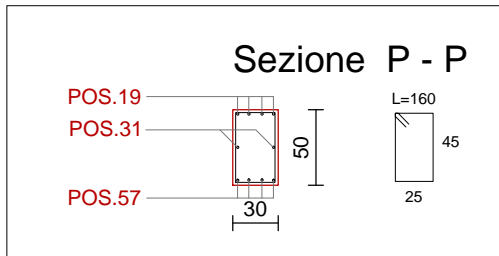
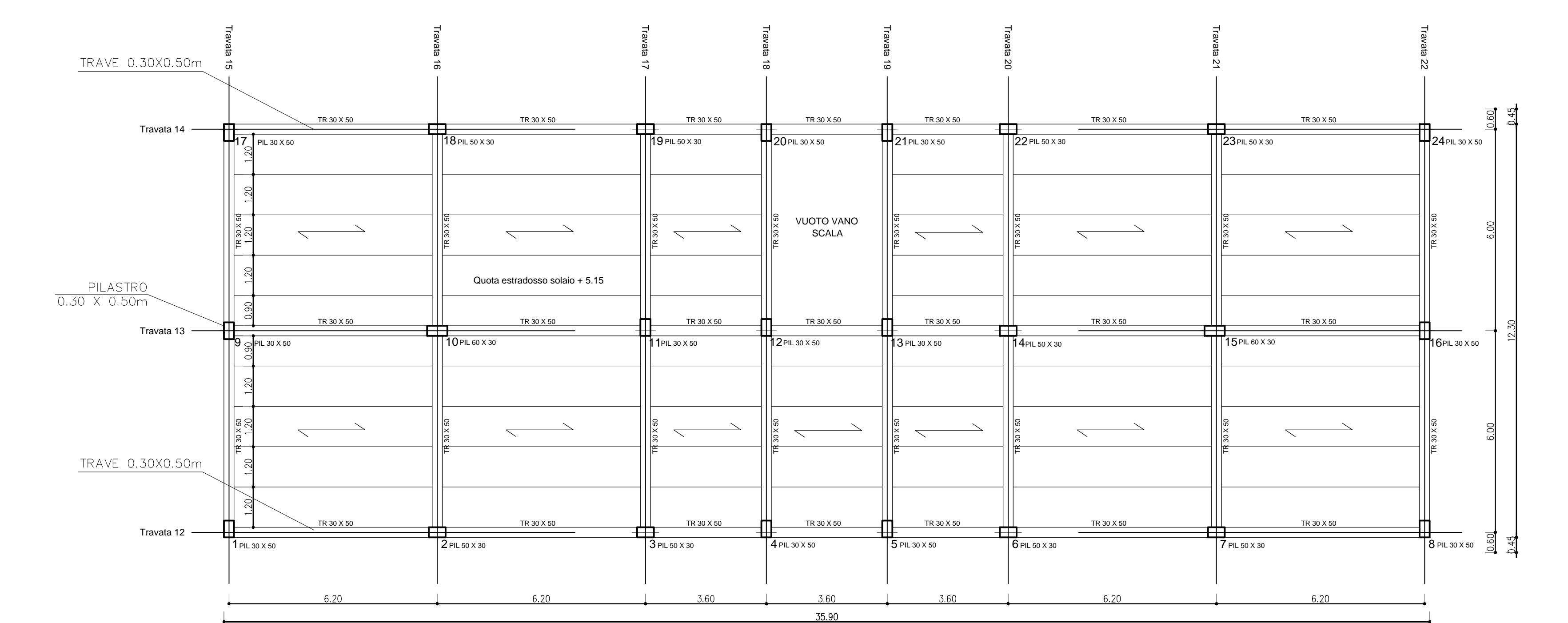
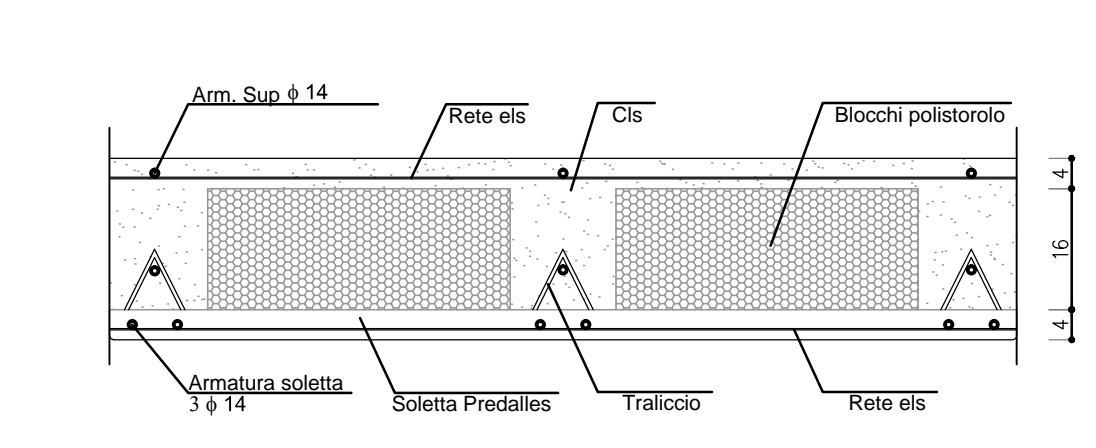


TABELLA MATERIALI	
CALCESTRUZZO	FONDAZIONI E GETTI CONTROTERRA
	CLASSE DI RESISTENZA C 25-30
	MASSIMO RAPPORTO A/C s 0,55
	CLASSE DI CONSISTENZA S4
ELEVAZIONI E SOLETTE	CLASSE DI RESISTENZA C 25-30
	MASSIMO RAPPORTO A/C s 0,50
	CLASSE DI CONSISTENZA S4
	DIAMETRO MAZ AGGREGATI 25 mm
ACCIAIO PER C.A.	FONDAZIONI E GETTI CONTROTERRA
	ACCIAIO IN BARRE AD ADERENZA MIGLIORATA B450C
	COPRIFERRO PER ELEVAZIONI 30 mm
	COPRIFERRO PER FONDAZIONI 50 mm
INCIDENZA ARMATURA TRAVI	
MINIMA PERCENTUALE ARMATURA RISPETTO AL CLS	0,31%
MASSIMA PERCENTUALE ARMATURA RISPETTO AL CLS	1,55%

IMPALCATO 1- PIANTA SCALA 1:100



PARTICOLARE DEL SOLAIO TIPO SCALA 1:10



AUTOSTRADA VALDASTICO A31 NORD
1° LOTTO
Piovene Rocchette - Valle dell'Astico

PROGETTO DEFINITIVO

COMITENTE: S.p.A. AUTOSTRADA BRESCIA VERONA VICENZA PADOVA
Area Costruzioni Autostradali

PROGETTAZIONE: CONSORZIO RAETIA
RAPPRESENTANTE: Dott. Ing. Alberto Sassi

ELABORATO: EDIFICI E STRUTTURE A CORREDO
EDIFICIO SERVIZI DI ESERCIZIO PEDONANTE
STRUTTURALE

PROGETTO: 09_03_02_002_002

Rev.	Data	Descrizione	Progettazione	Controllo	Approvazione	Scala
01	09/03/2024	PROGETTO DEFINITIVO	CONSORZIO RAETIA	ING. G. BIANCHI	ING. G. BIANCHI	1:100
02	09/03/2024	REVISIONE PER VERIFICA	CONSORZIO RAETIA	ING. G. BIANCHI	ING. G. BIANCHI	1:100
03	09/03/2024	REVISIONE PER VERIFICA	CONSORZIO RAETIA	ING. G. BIANCHI	ING. G. BIANCHI	1:100