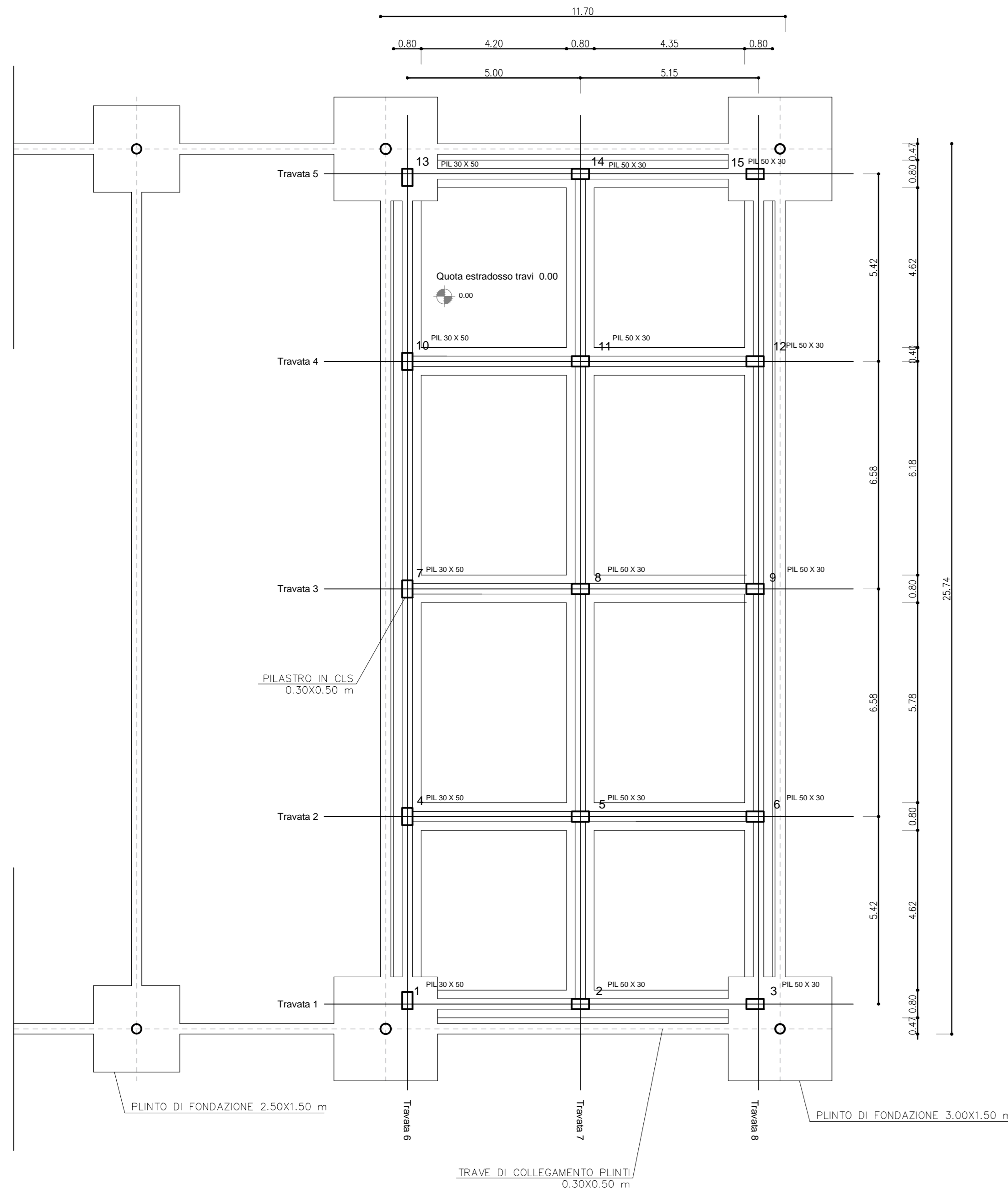
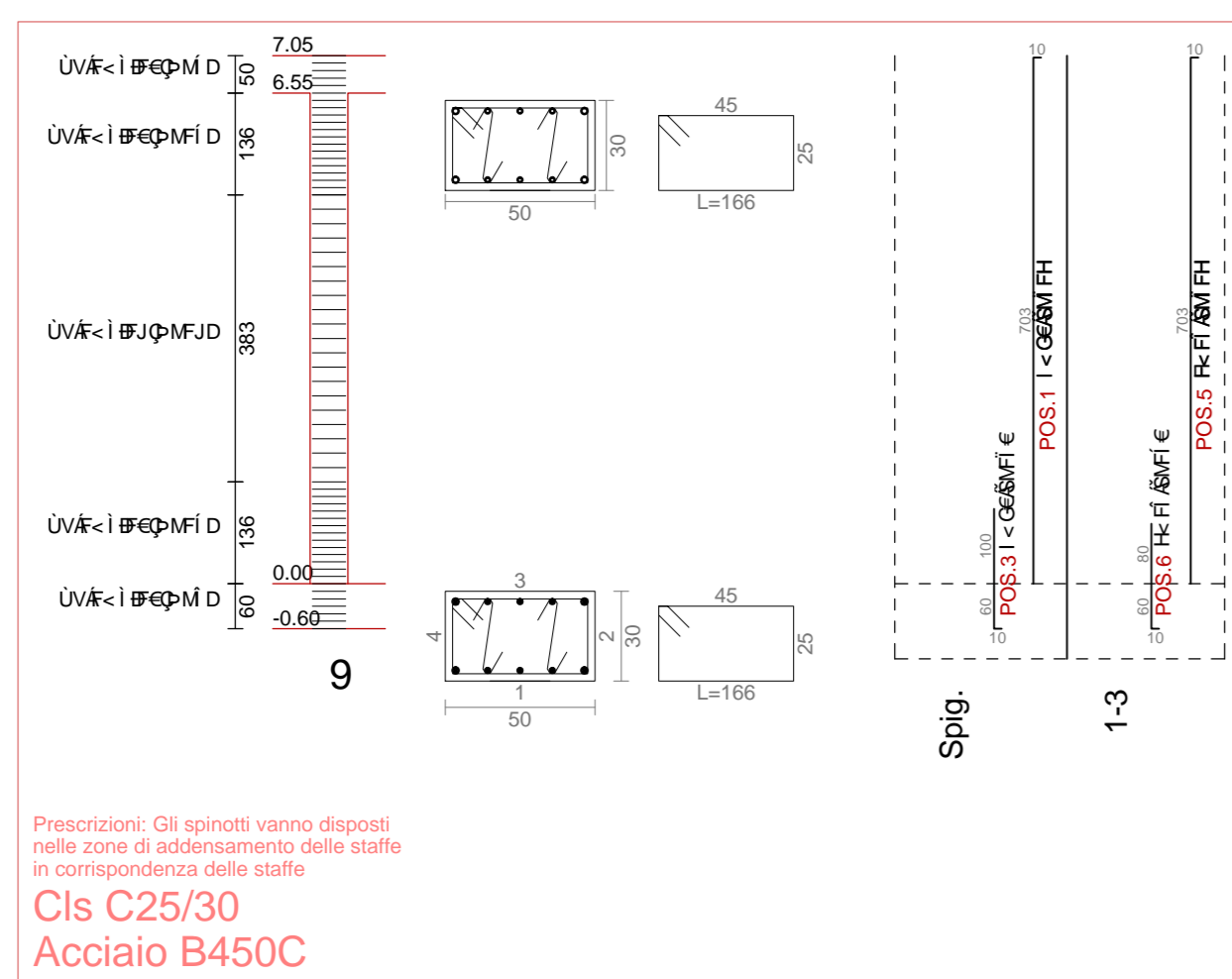
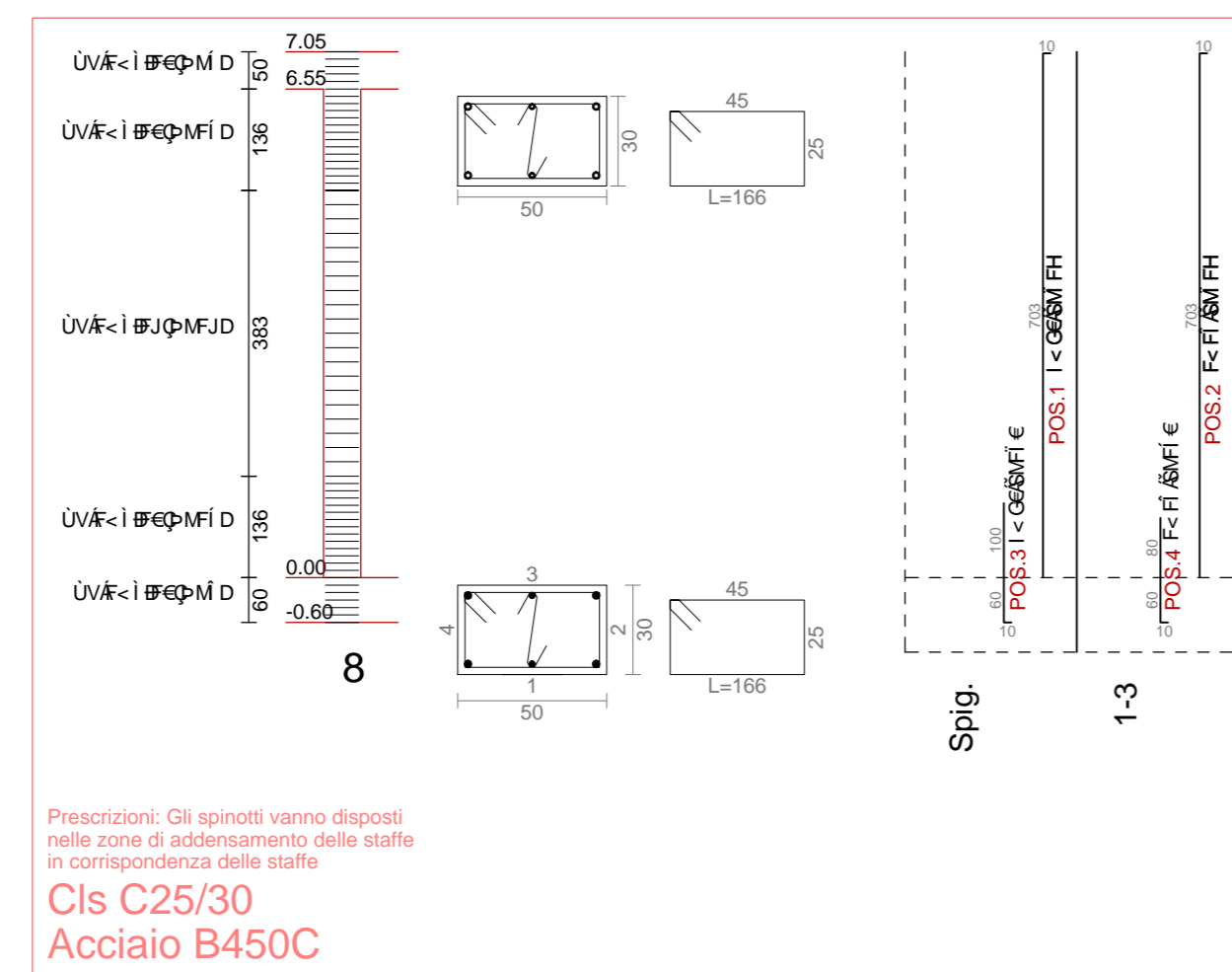
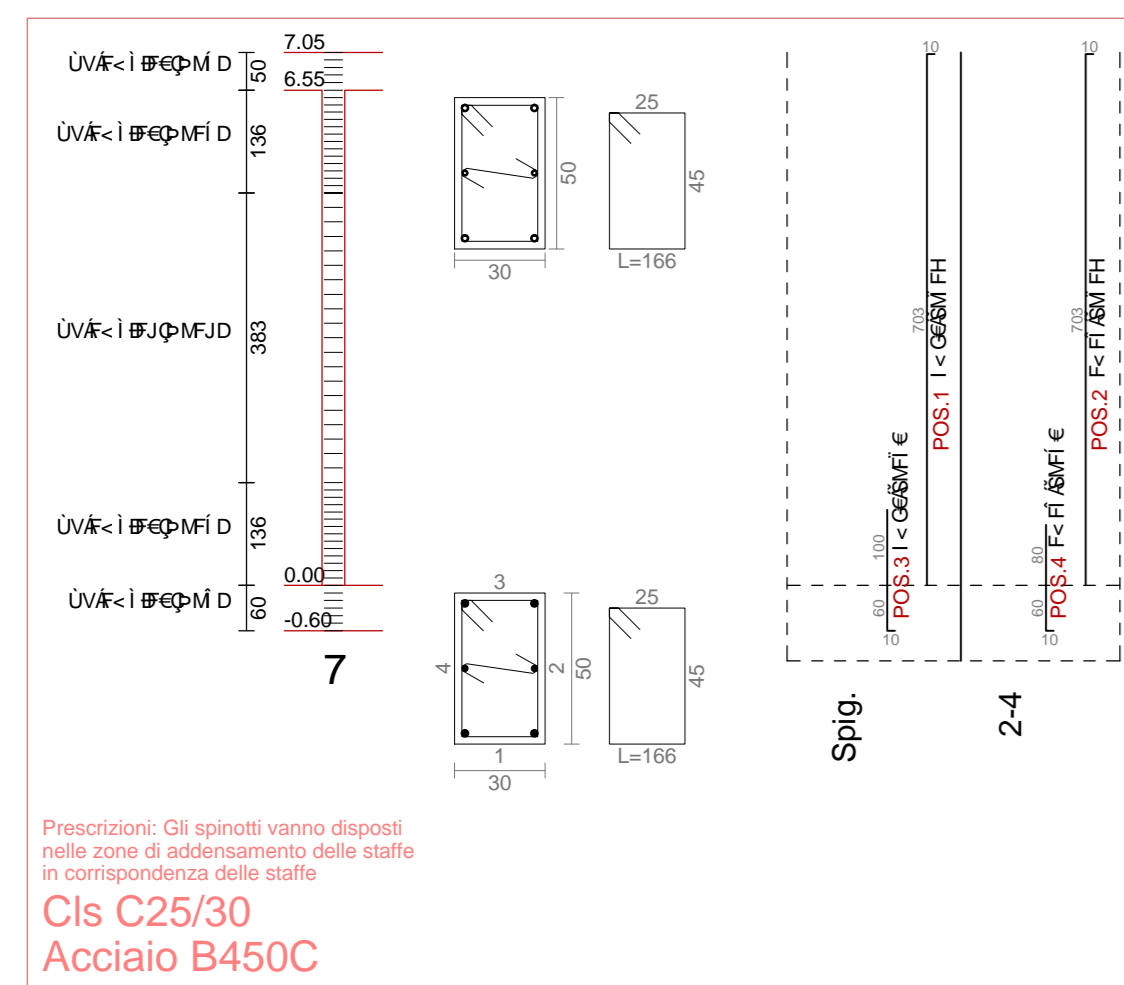


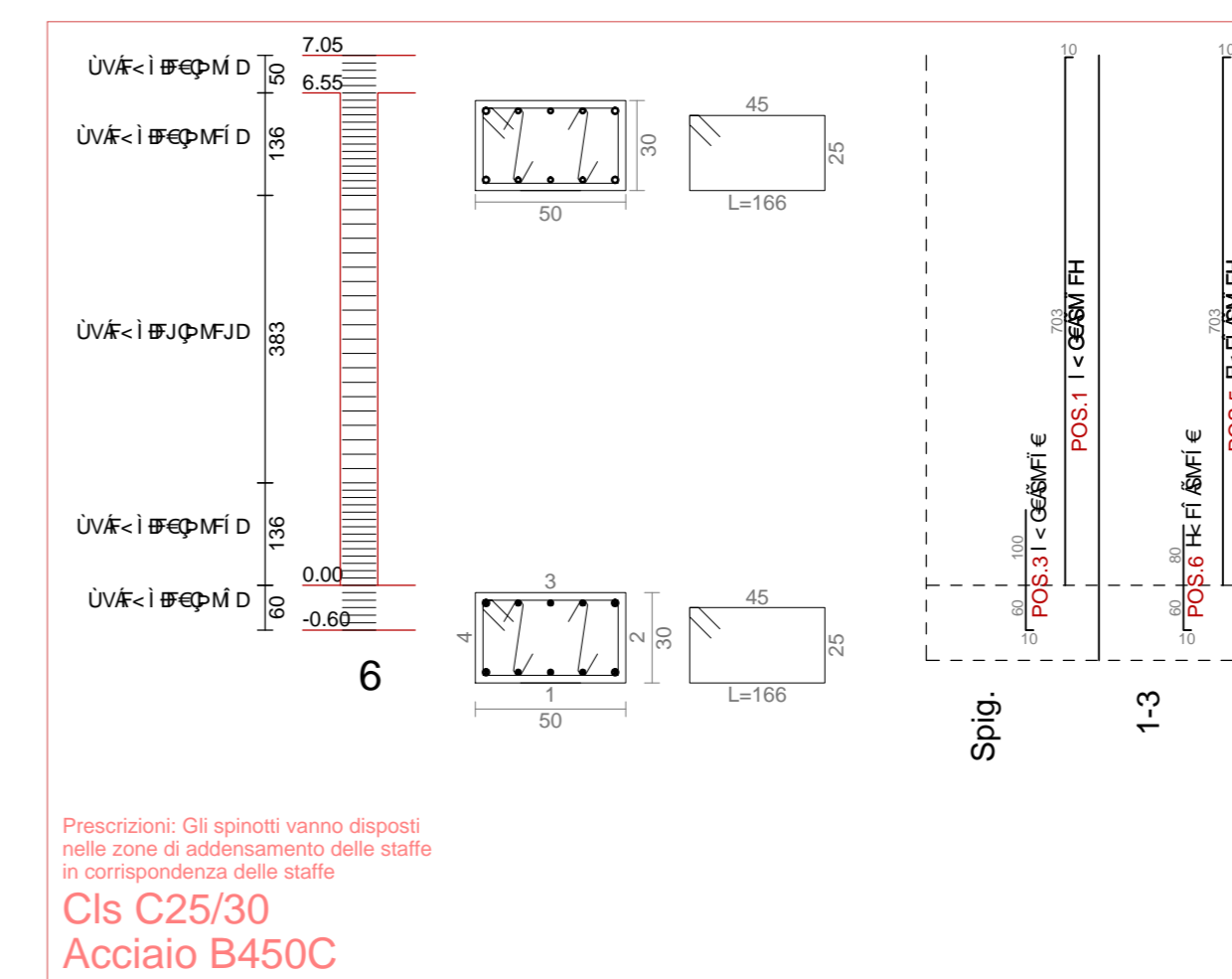
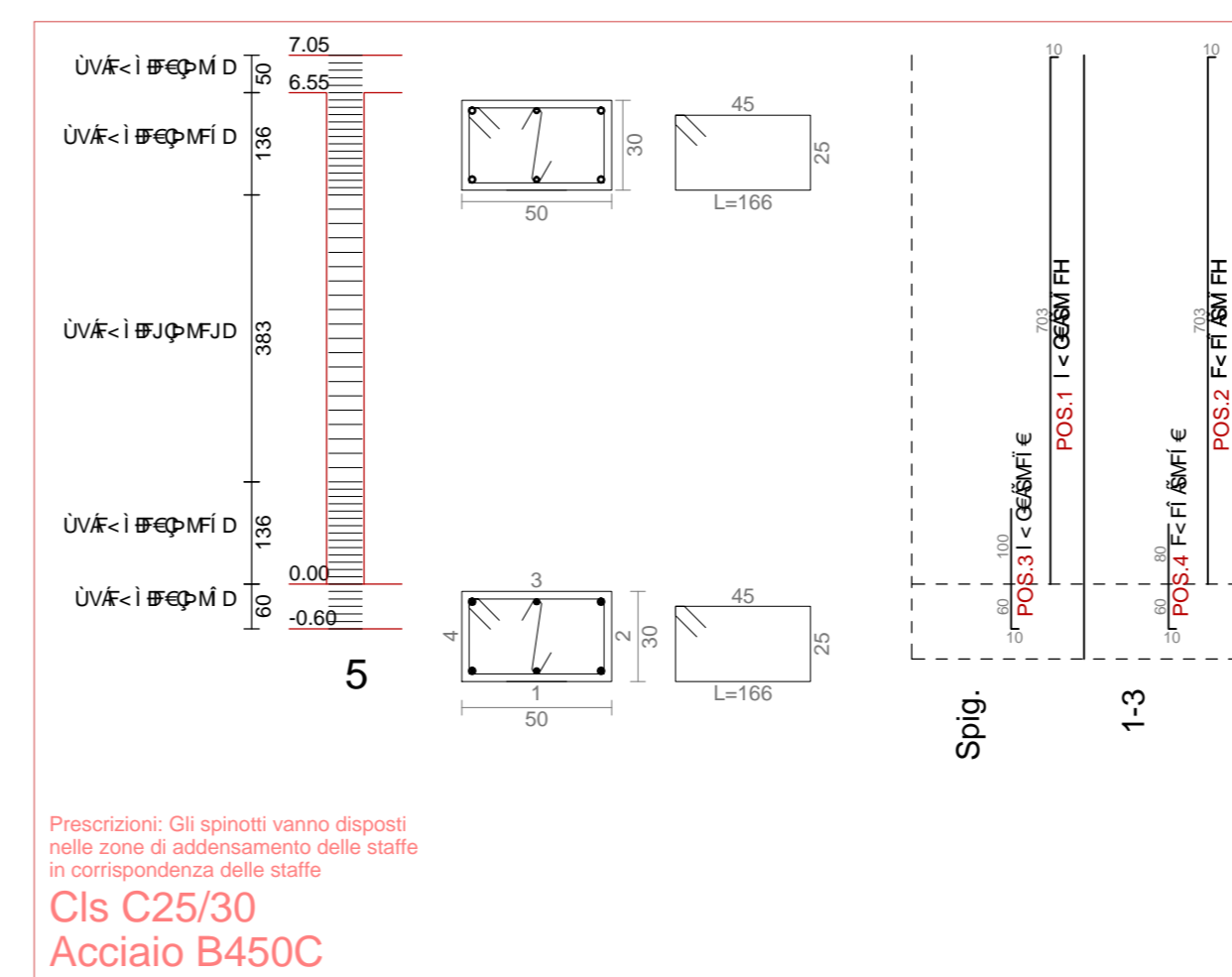
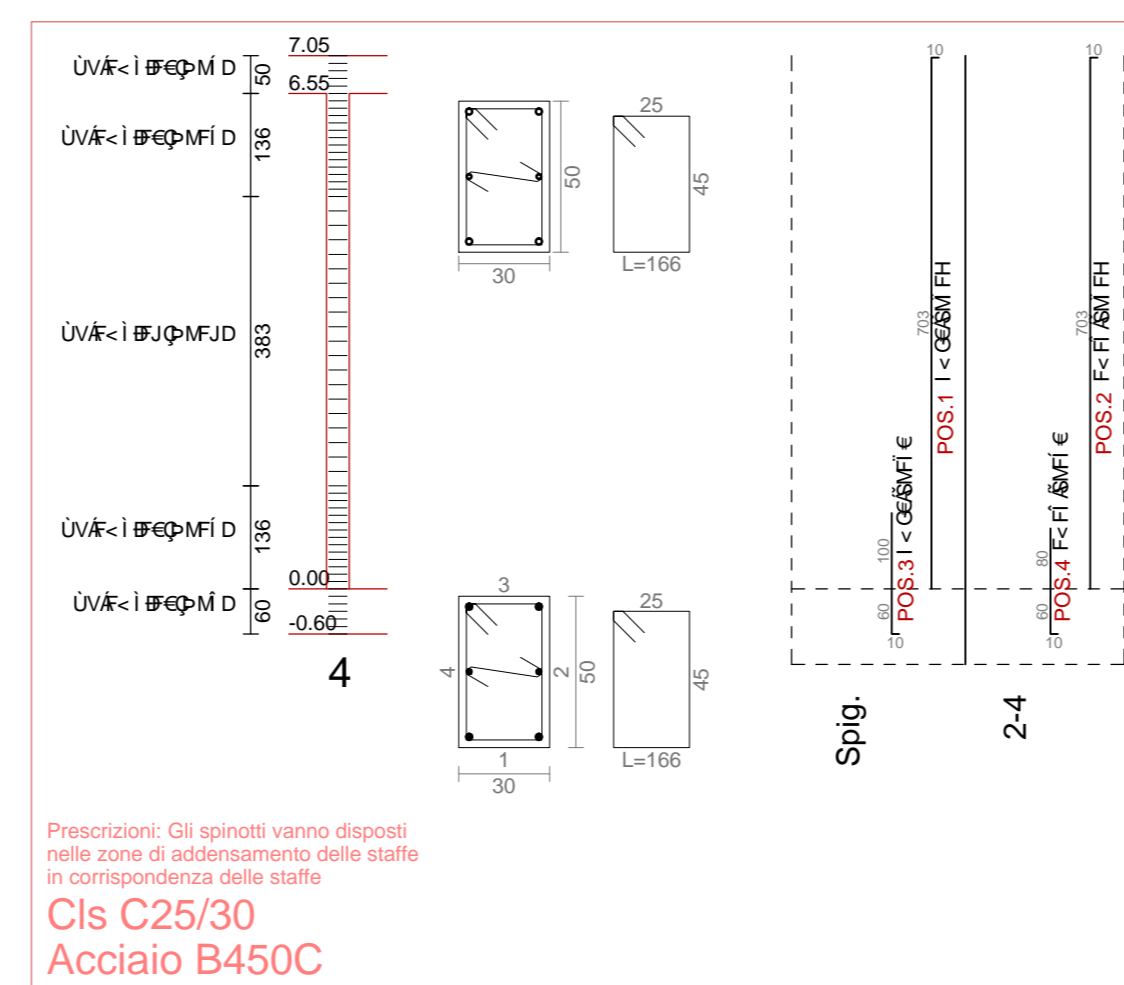
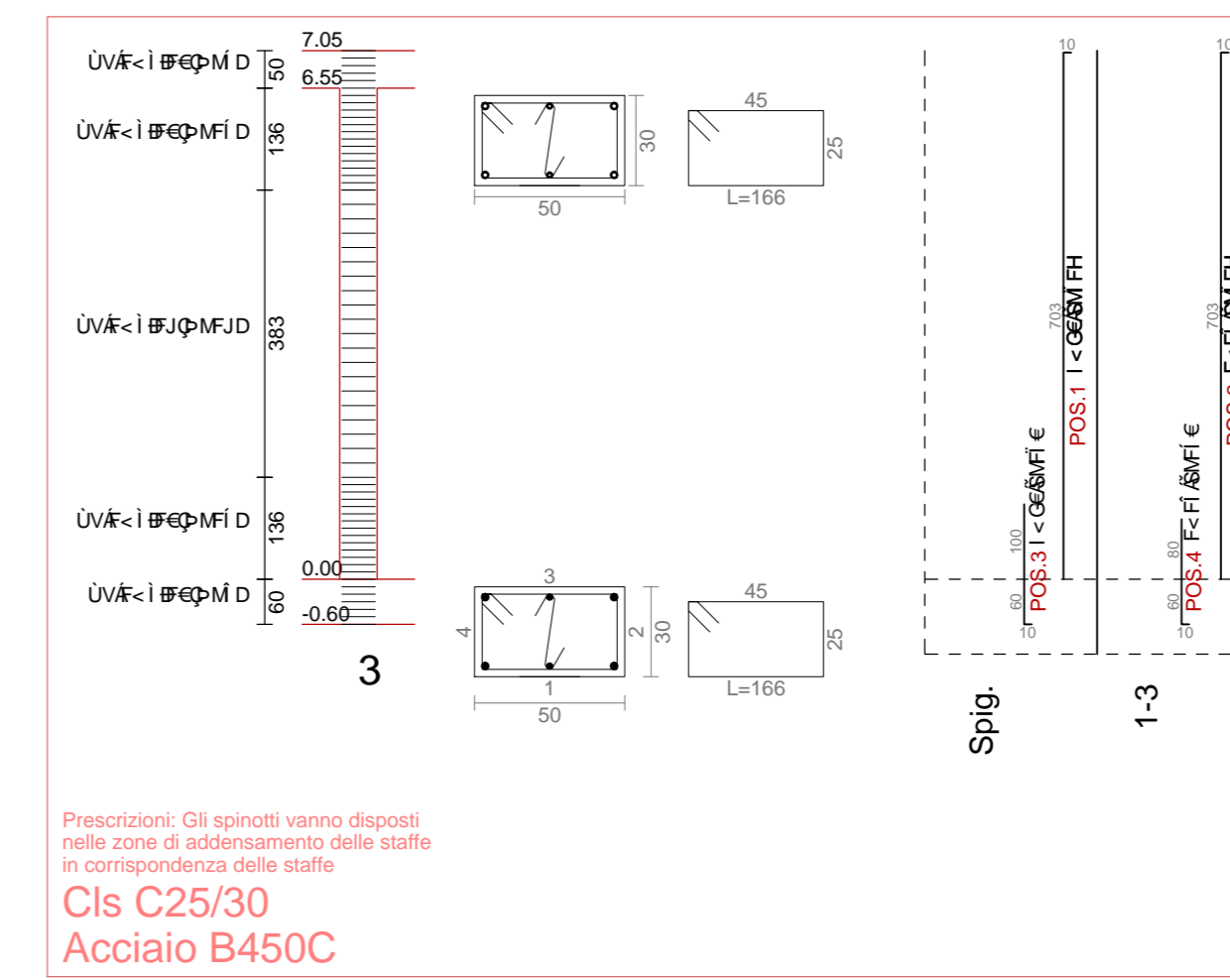
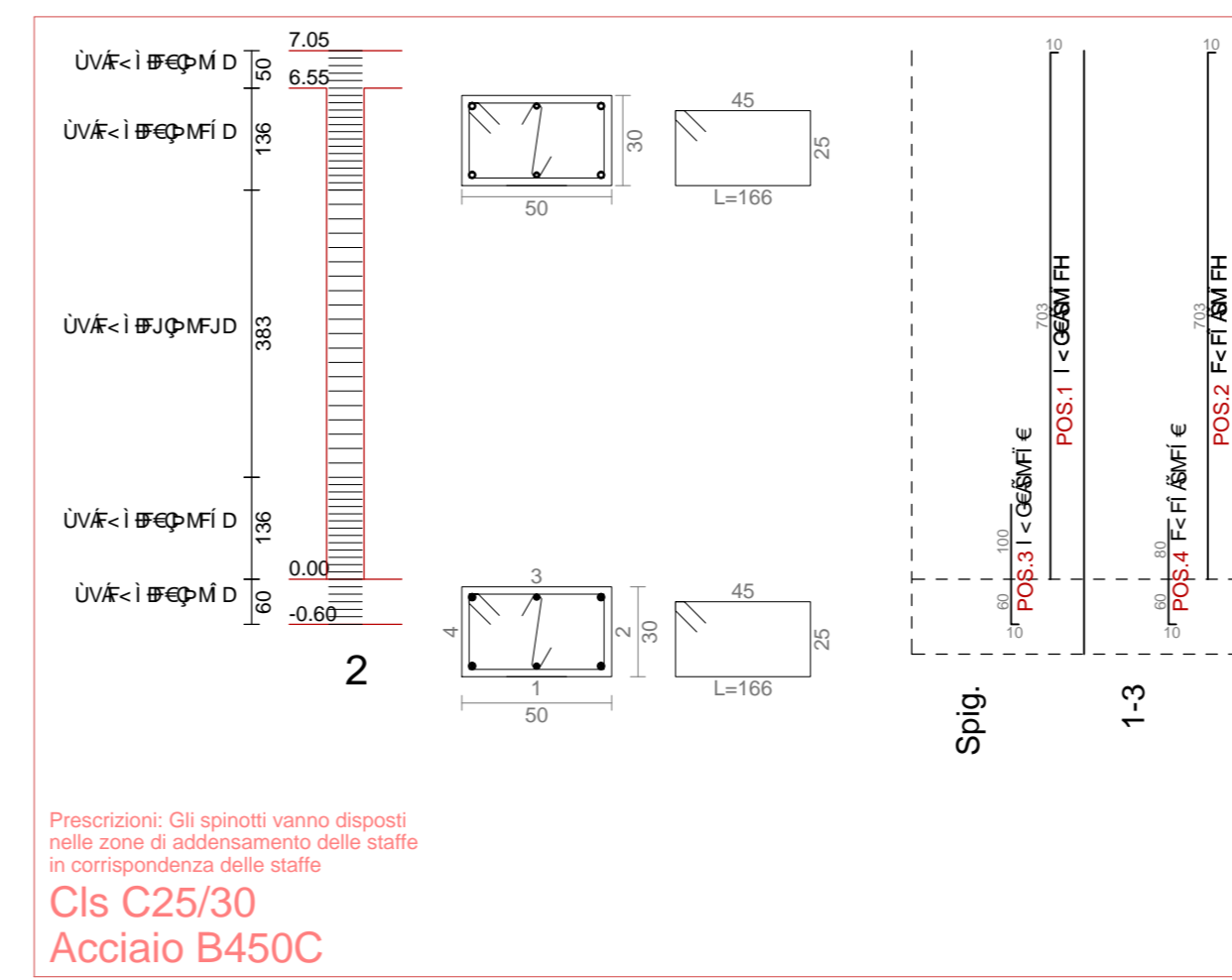
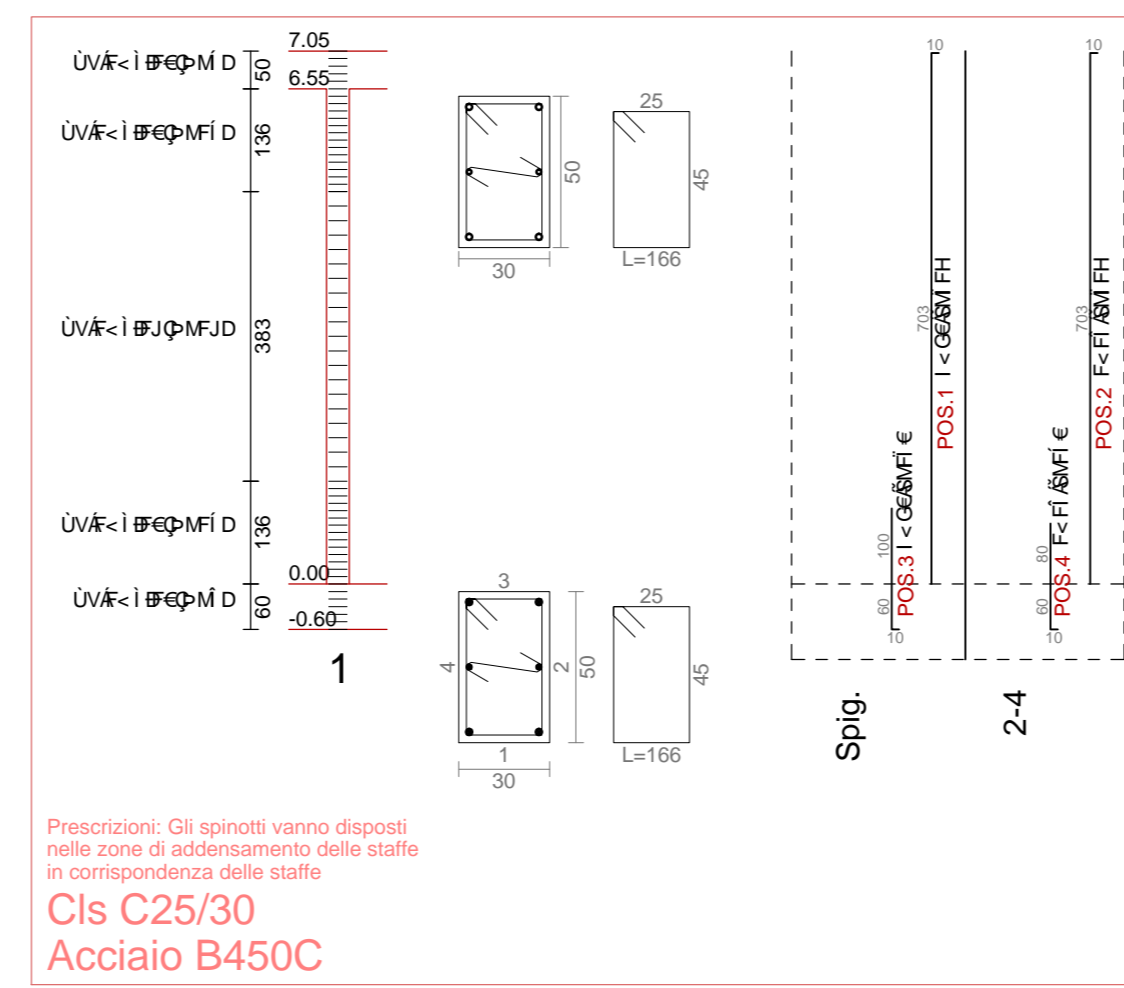
PIANTA DELLE FONDAZIONI SCALA 1:100



PILASTRI 7 - 8 - 9 SCALA 1:100



PILASTRI 1 - 2 - 3 - 4 - 5 - 6 SCALA 1:100



PILASTRI 10 - 11 - 12 - 13 - 14 - 15 SCALA 1:100

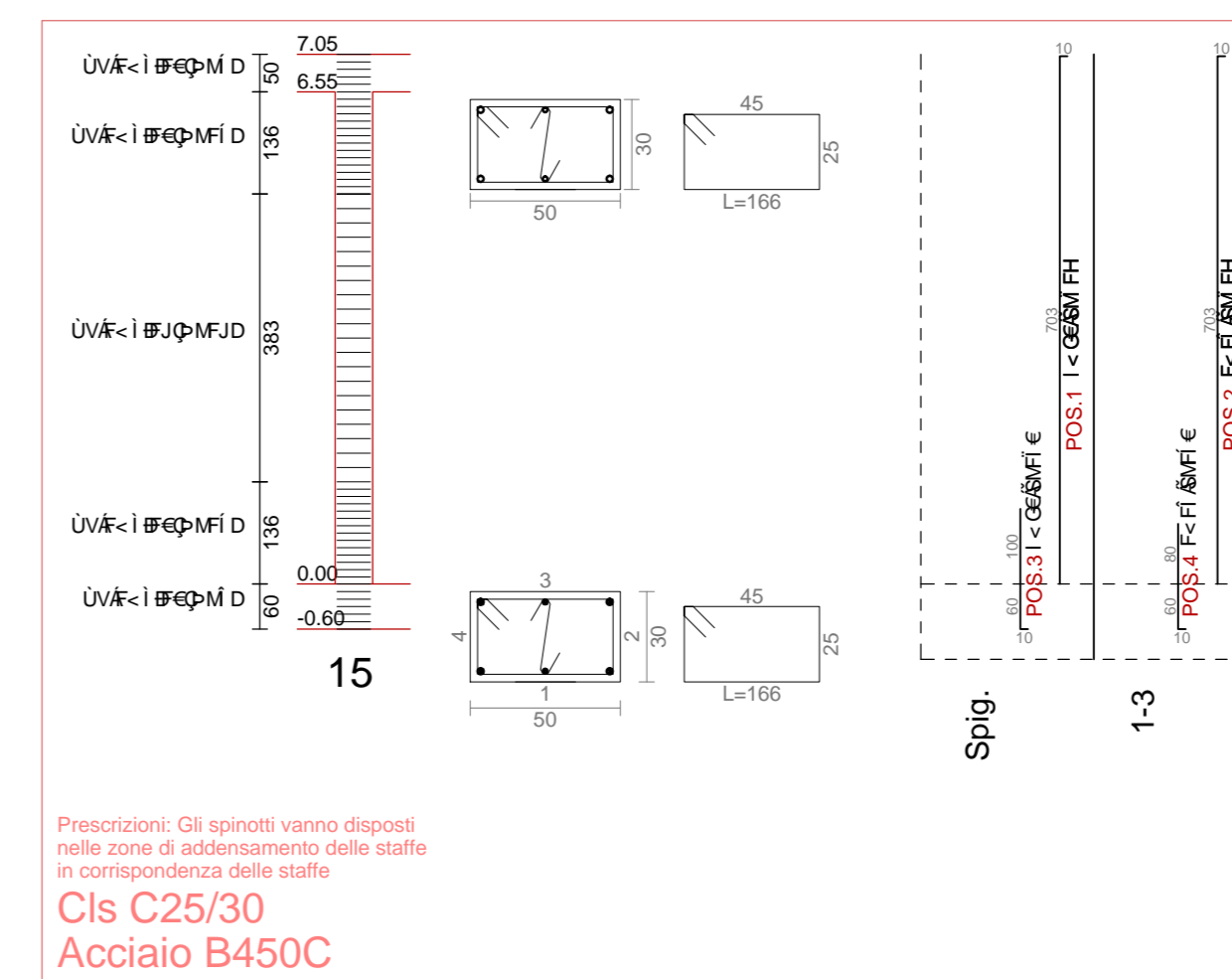
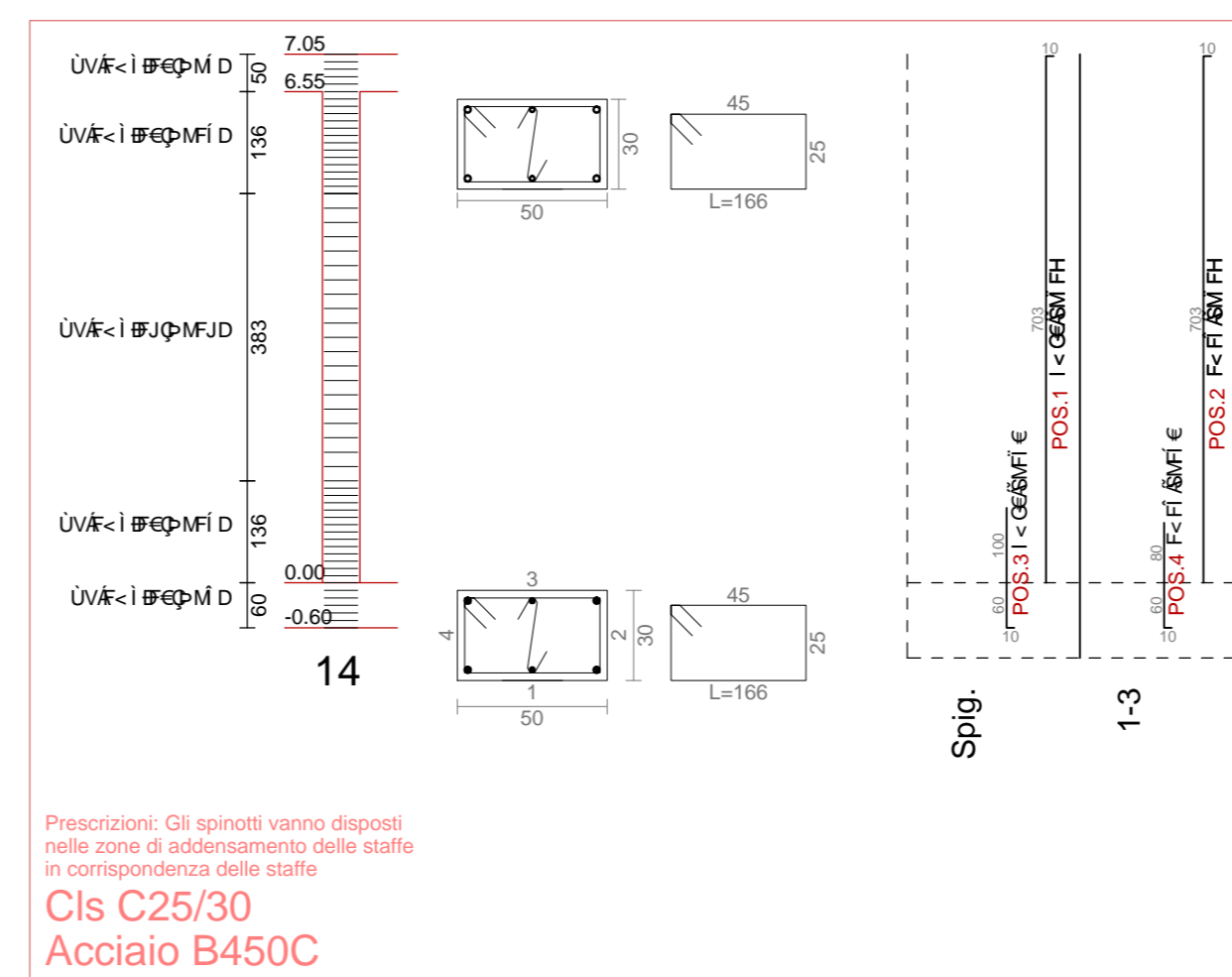
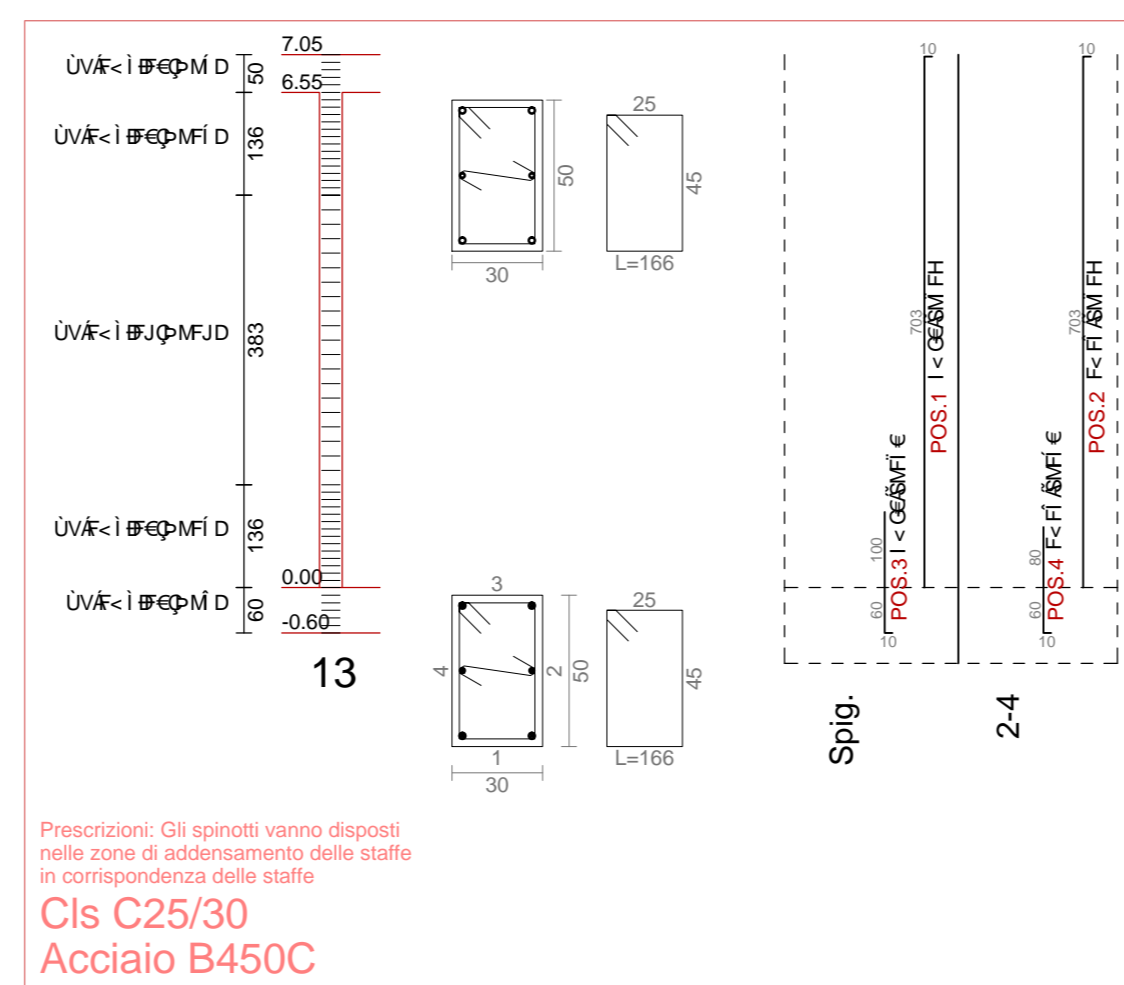
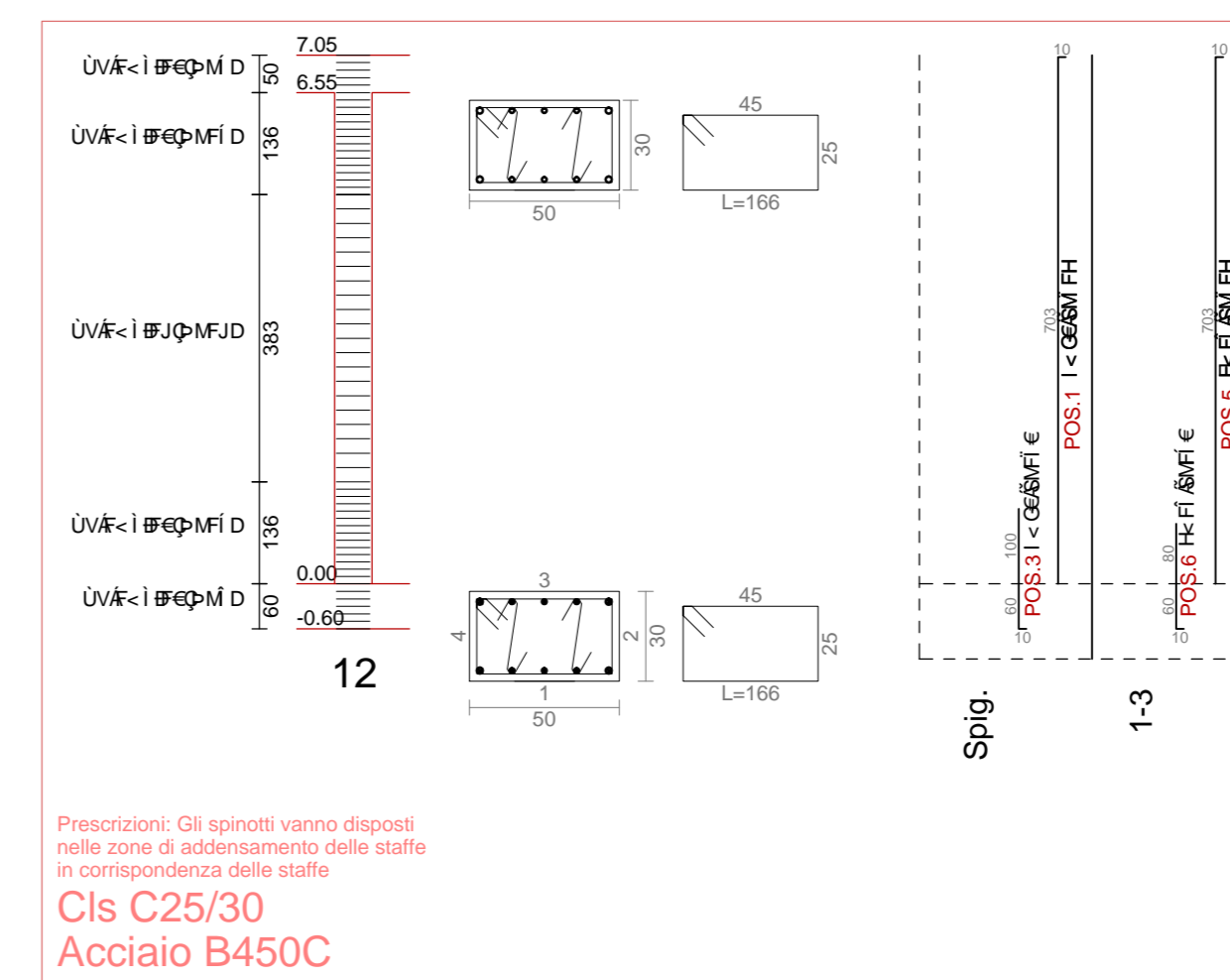
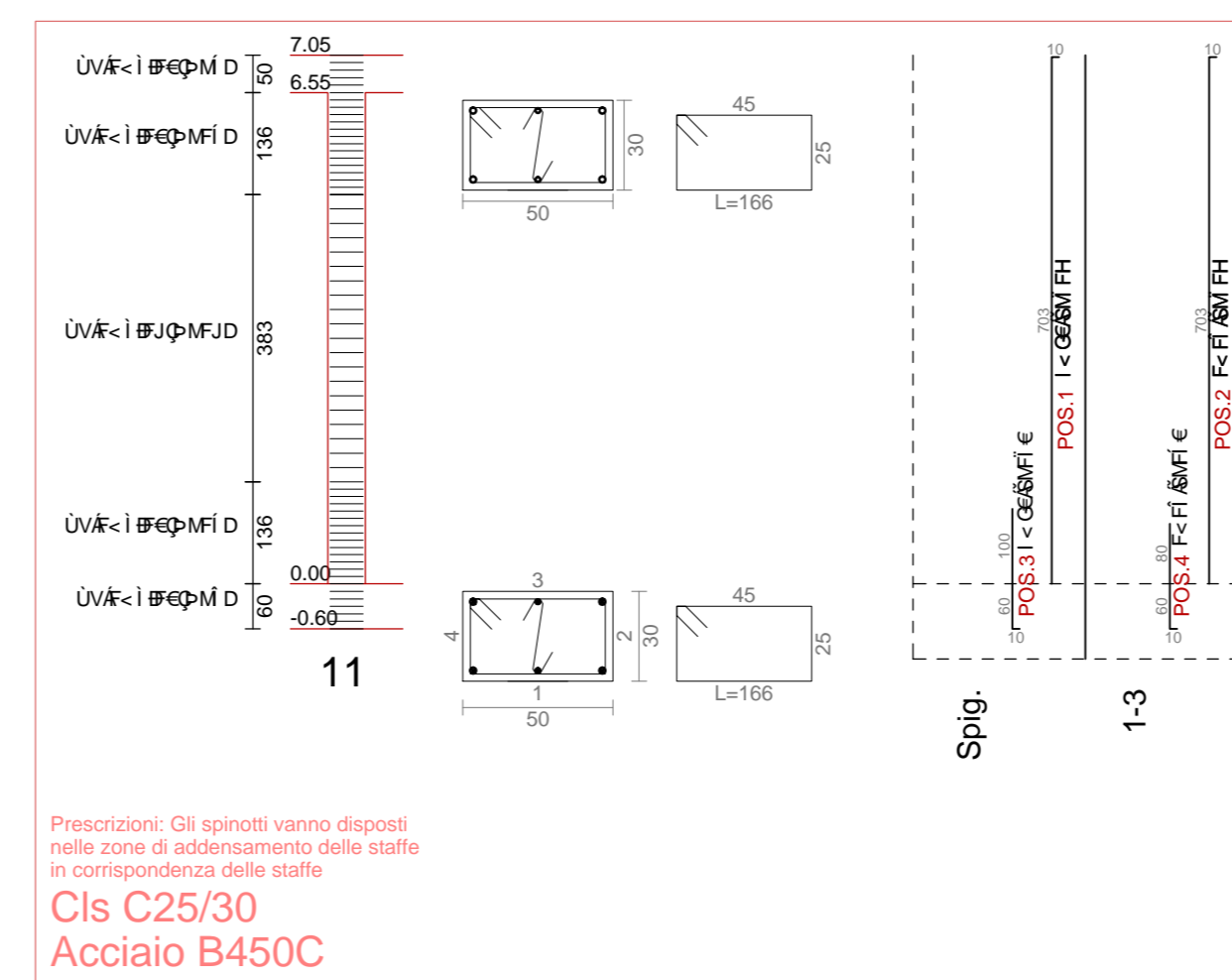
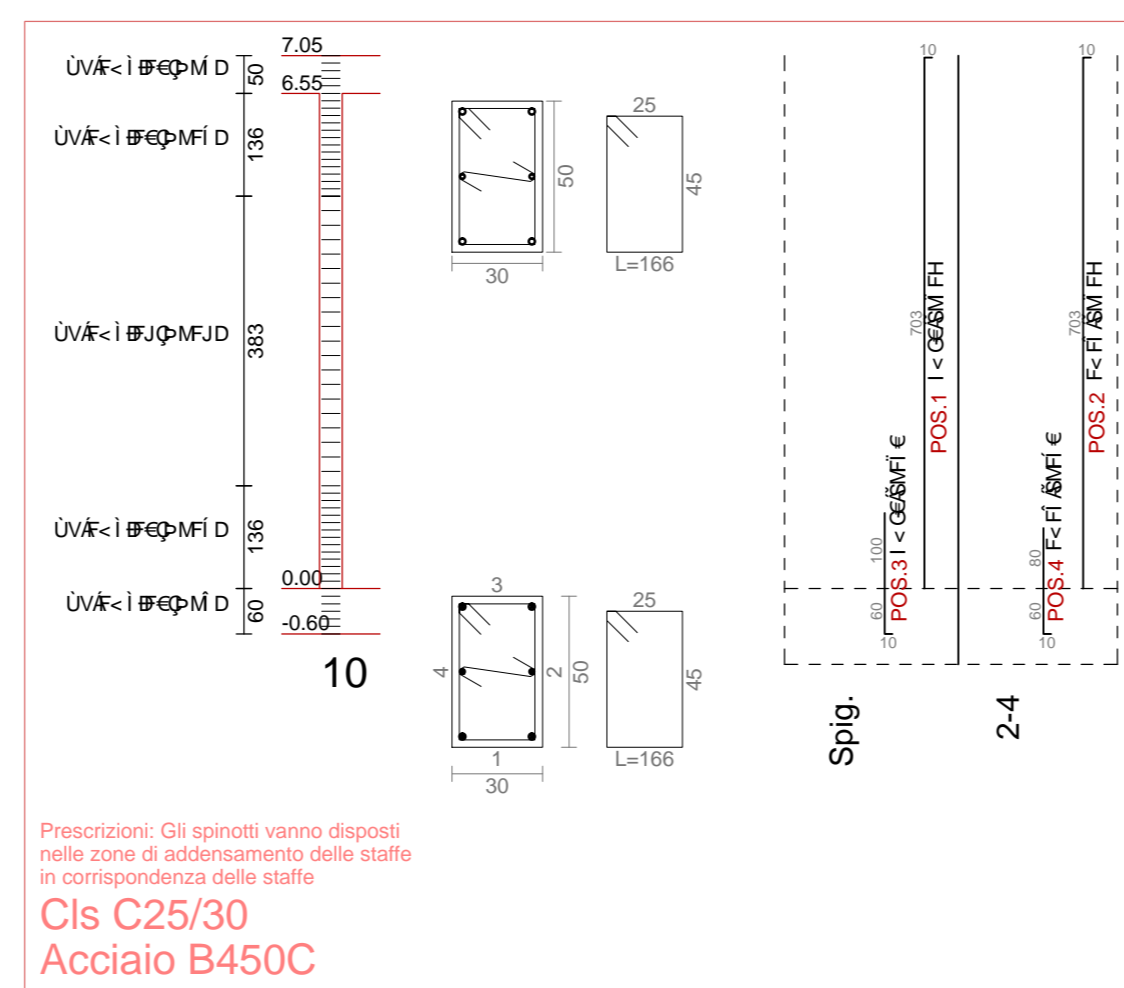


TABELLA MATERIALI

CALCESTRUZZO	FONDAZIONI E GETTI CONTROTERRA
	CLASSE DI RESISTENZA C 25-30
	MASSIMO RAPPORTO A/C ≤ 0.55
	CLASSE DI CONSISTENZA S4
	DIAMETRO MAZ AGGREGATI 20 mm
	CLASSE DI ESPOSIZIONE X C2
ACCIAIO PER C.A.	FONDAZIONI E GETTI CONTROTERRA
	ACCIAIO IN BARRE AD ADERENZA MIGLIORATA B450C
	COPRIFERRO PER ELEVAZIONE 30 mm
	COPRIFERRO PER FONDAZIONE 50 mm
	SOVRAPPOSIZIONE MINIMA PARI A 20 DIAMETRI
INCIDENZA ARMATURA PILASTRI	
	MINIMA PERCENTUALE ARMATURA RISPETTO AL CLS 1%
	MASSIMA PERCENTUALE ARMATURA RISPETTO AL CLS 4%

Autostada Brescia Verona Vicenza Padova SpA  
Via Fiesco Giza 71 - 37135 Verona  
Tel. 045872222 Fax 0458200001 Casella Postale 40047 www.autostada.it  
AREA COSTRUZIONI AUTOSTRADALI

## AUTOSTRADA VALDASTICO A31 NORD

### 1° LOTTO Piovene Rocchette - Valle dell'Astico

**PROGETTO DEFINITIVO**

COMMITTENTE: S.p.A. AUTOSTRADA BRESCIA VERONA VICENZA PADOVA  
Area Costruzioni Autostradali

CONSTATORE DI SERVIZI:  
**CONSORZIO RAETIA**

REPRESENTANTE: Dott. Ing. Alberto Scotti

CUP: G3913006.0005  
VBS: B53A1N11  
COMMESSA: J16L1

CAPO COMMESSA PER LA PROGETTAZIONE:  
Dott. Ing. Roberto Costantini

PROGETTAZIONE:  
**CONSORZIO RAETIA**  
ING. ENRICO FORNARI  
ING. ROBERTO COSTANTINI  
ING. ALBERTO SCOTTI  
ING. FRANCESCO COCCATE

ELABORATO: EDIFICI E STRUTTURE A CORREDO  
EDIFICIO SERVIZI INVERNALI PEDEMONTE  
STRUTTURALE  
STRUTTURA IN C.A. - TABELLA PILASTRI

Progettato: **09 04 02 002 02**

Rev.	Data	Descrizione	Redazione	Controllo	Approvazione	SCALA: 1:100
01	02/03/20	PRIMA EMISSIONE				
02	02/03/20	REVISIONE PER VERIFICA				
03	02/03/20	RECESSIONE OSSERVAZIONI				