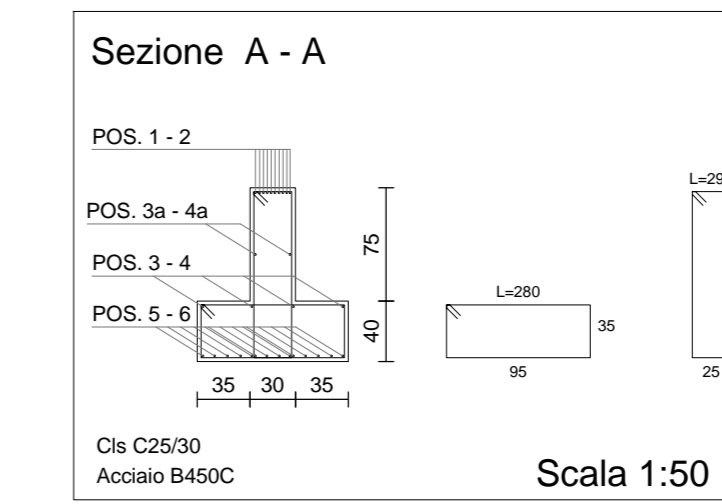
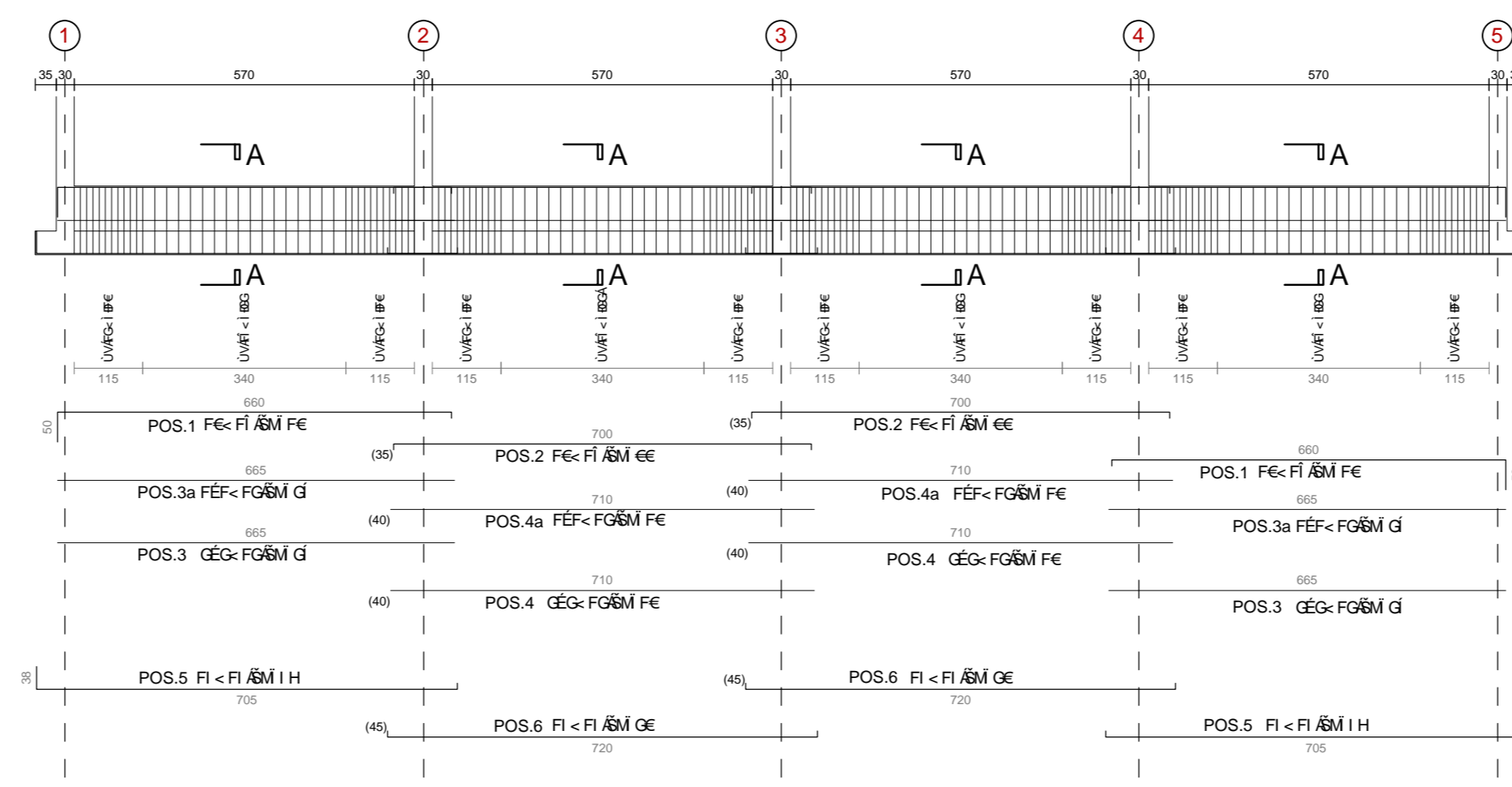
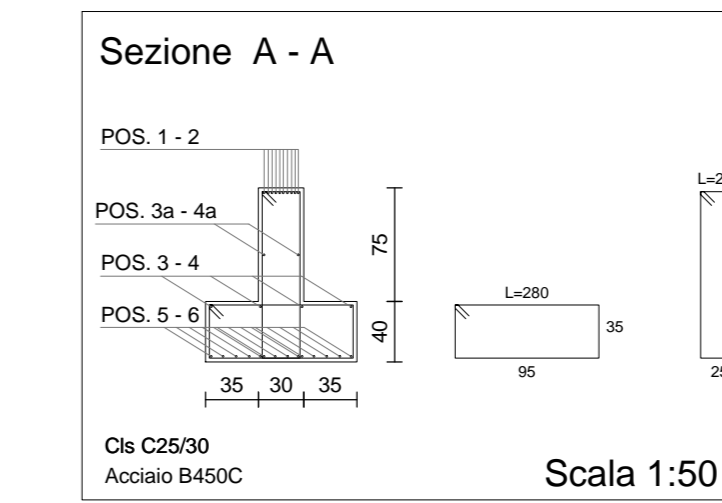
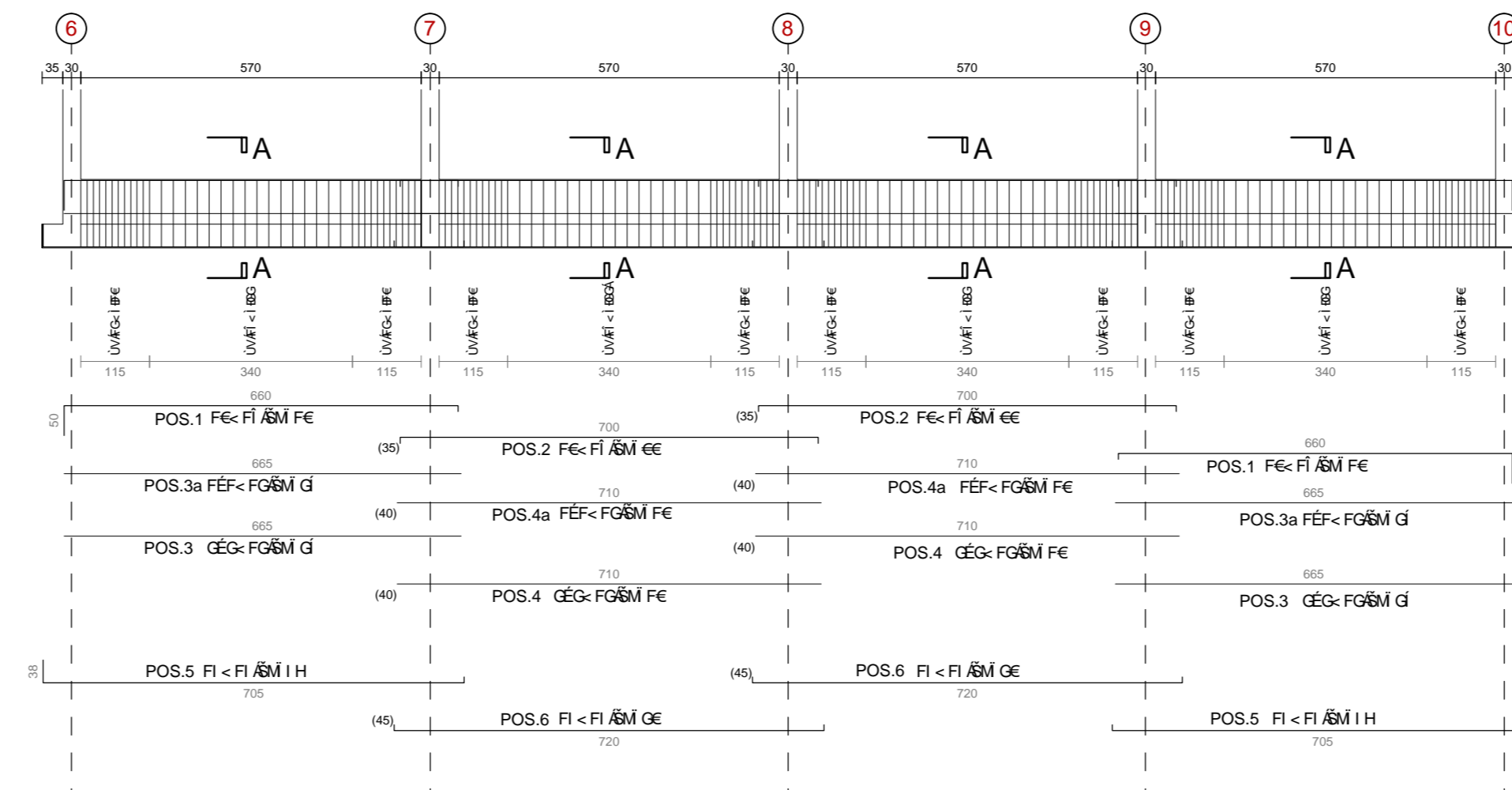


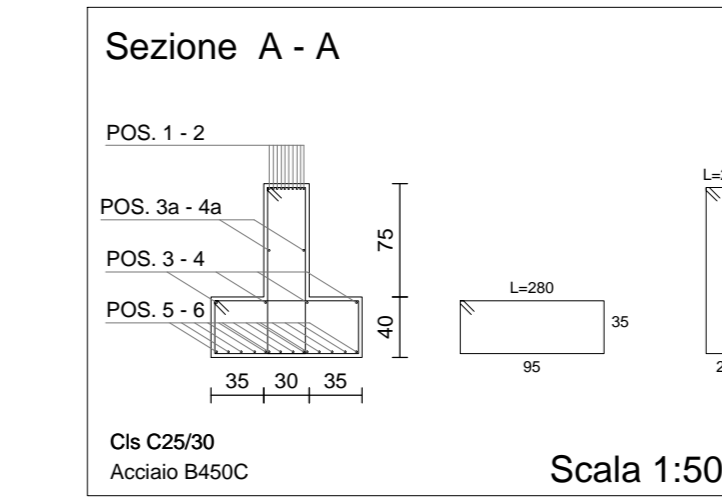
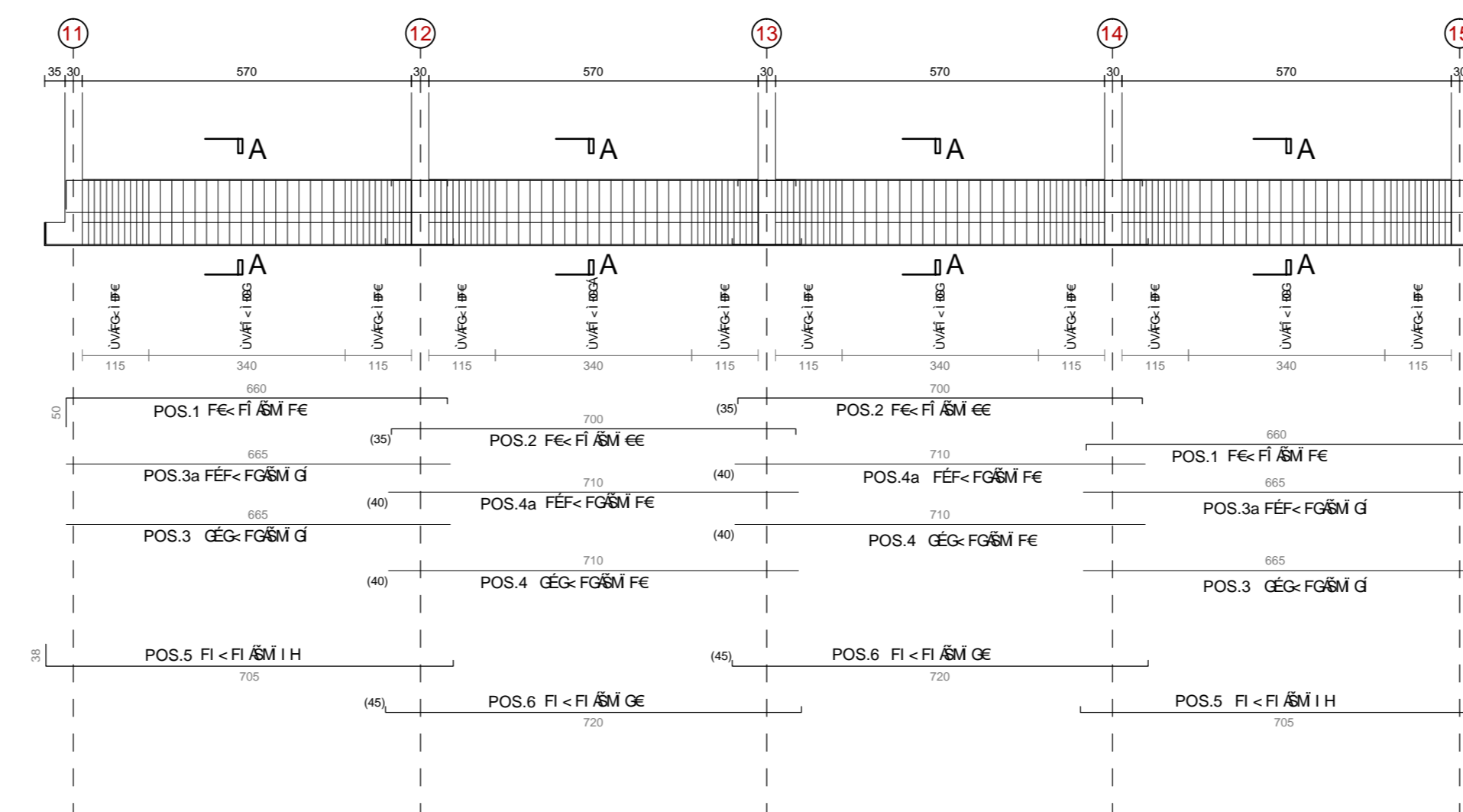
Travata : 1



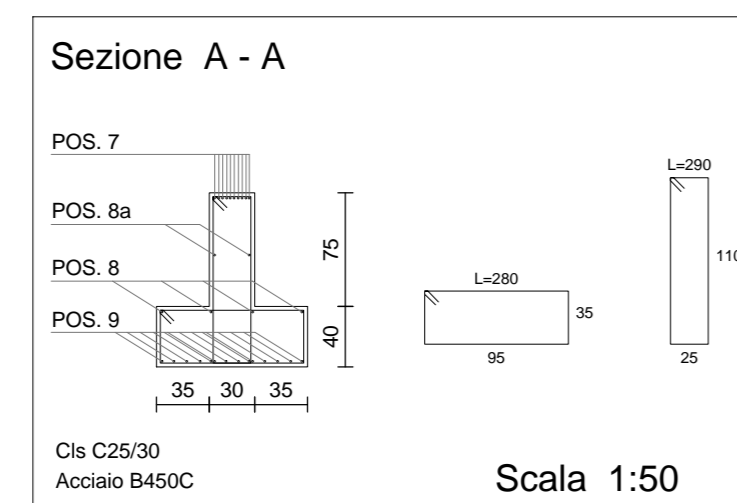
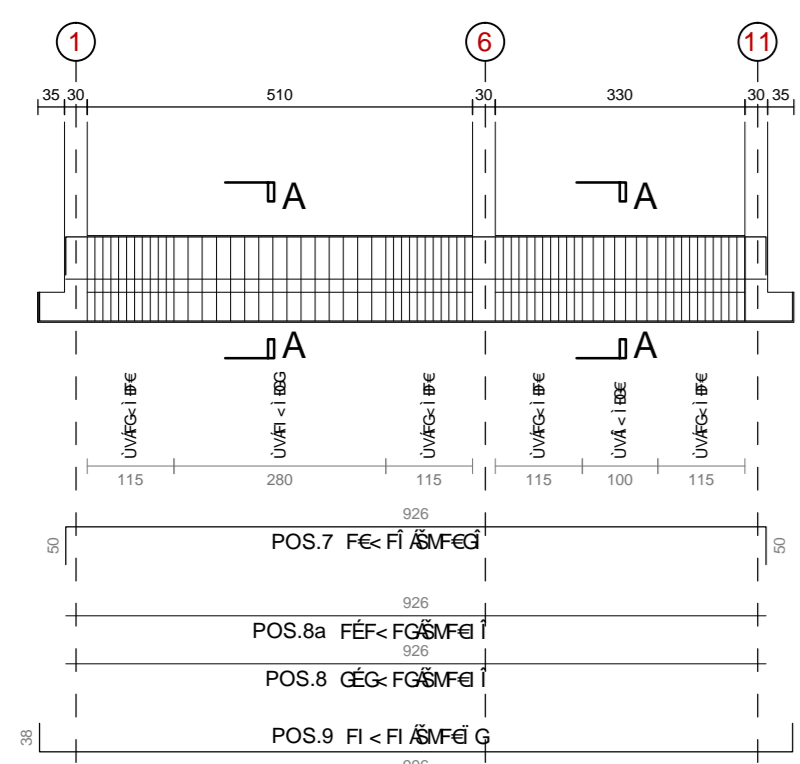
Travata : 2



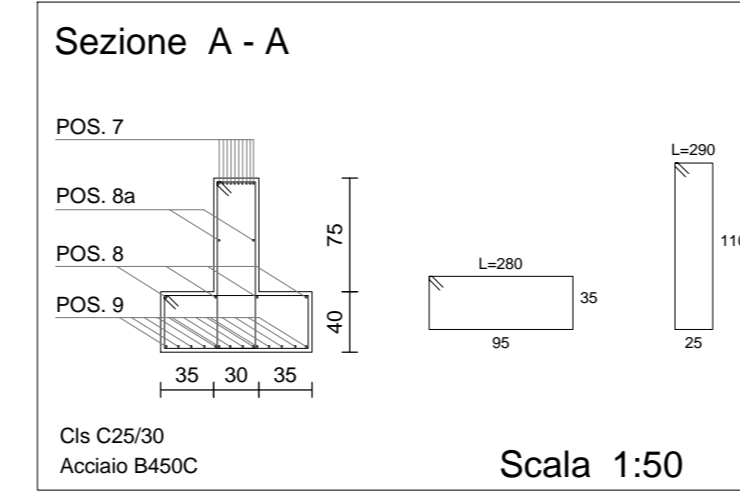
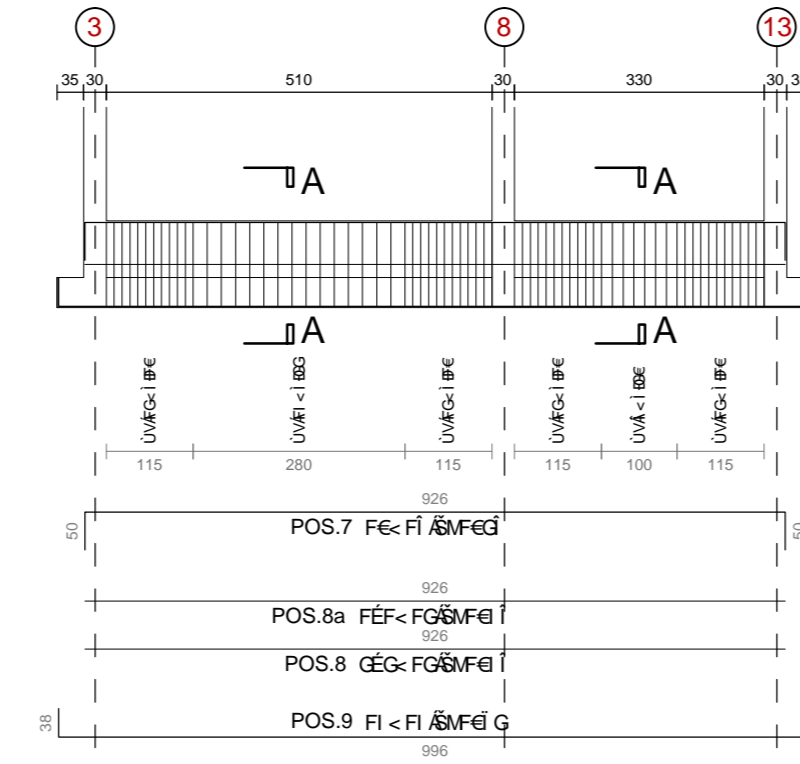
Travata : 3



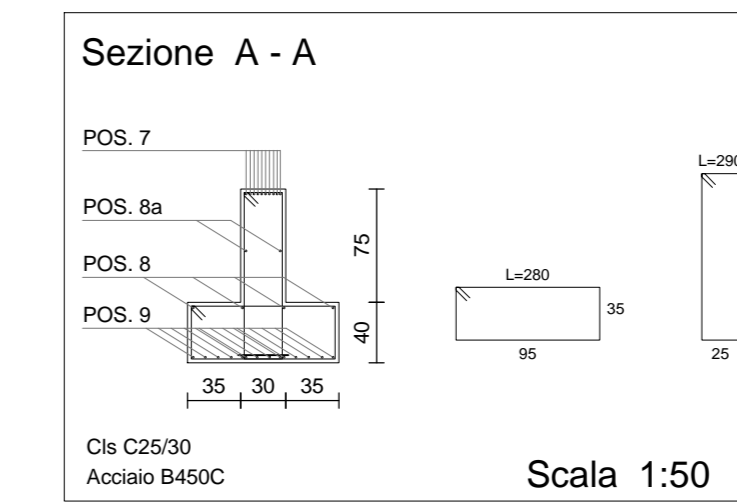
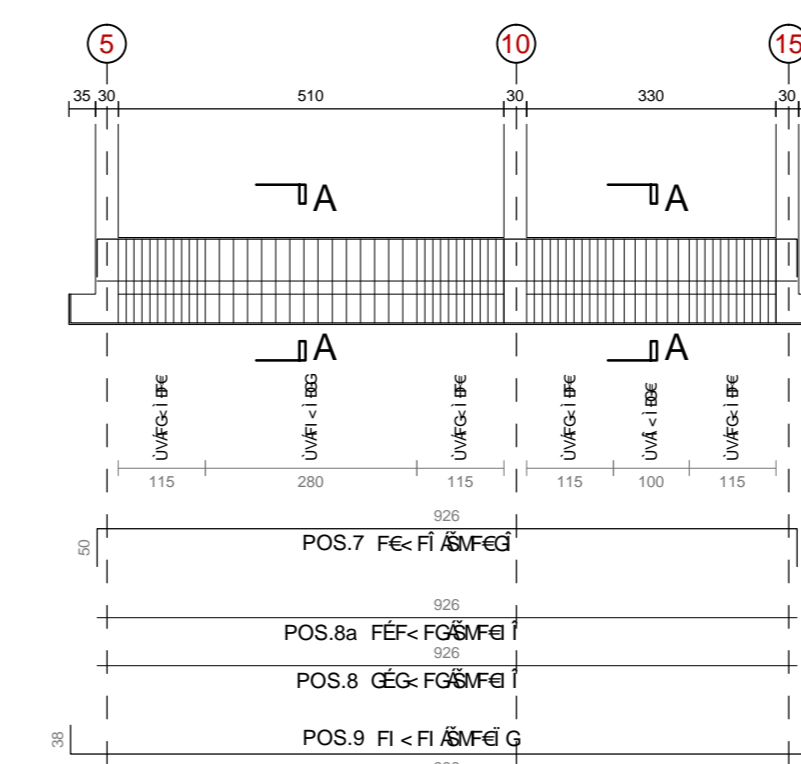
Travata : 4



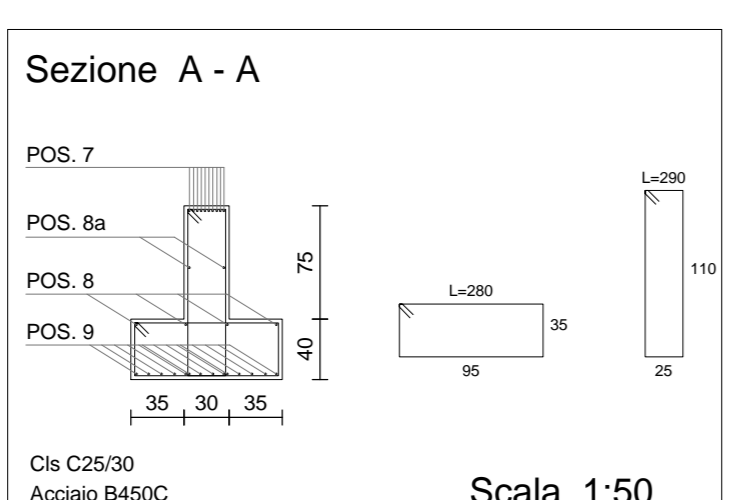
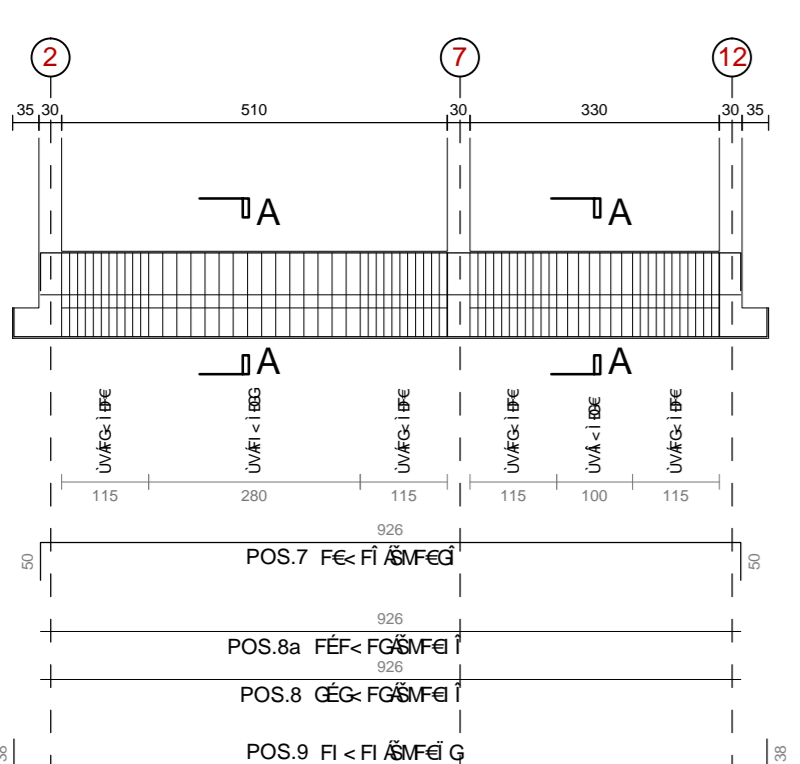
Travata : 6



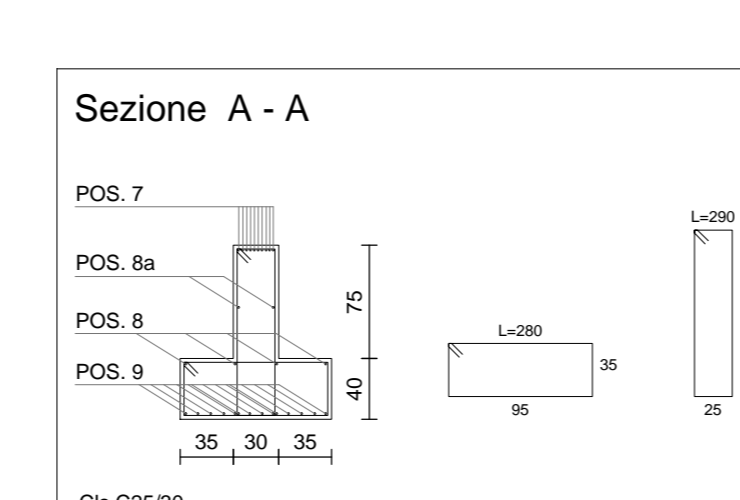
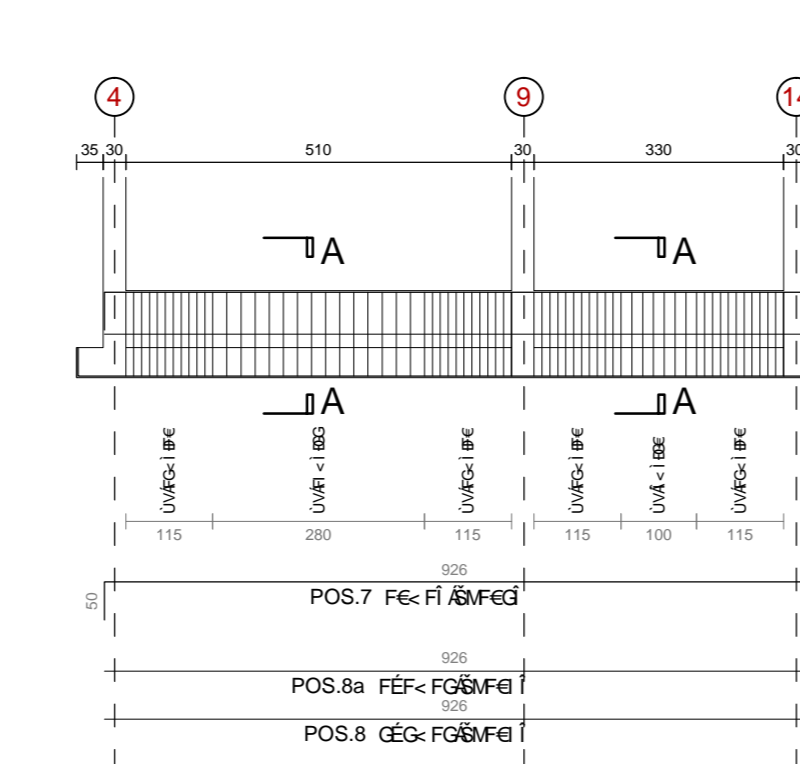
Travata : 8



Travata : 5



Travata : 7



CALCESTRUZZO	FONDAZIONI E GETTI CONTROTERRA	
	CLASSE DI RESISTENZA C 25-30	
	MASSIMO RAPPORTO a/c ≤ 0.55	
	CLASSE DI CONSISTENZA S4	
	DIAMETRO MAZ AGGREGATI 20 mm	
	CLASSE DI ESPOSIZIONE X C2	
ELEVAZIONE E SOLETTE		
	CLASSE DI RESISTENZA C 25-30	
	MASSIMO RAPPORTO a/c ≤ 0.60	
	CLASSE DI CONSISTENZA S4	
	DIAMETRO MAZ AGGREGATI 25 mm	
	CLASSE DI ESPOSIZIONE X C3	
ACCIAIO PER C.A.	FONDAZIONI E GETTI CONTROTERRA	
	ACCIAIO IN BARRE AD ADERENZA MIGLIORATA B450C	
	COPRIFERRO PER ELEVAZIONE 30 mm	
	COPRIFERRO PER FONDAZIONE 50 mm	
	SOVRAPPOSIZIONE MINIMA PARI A 20 DIAMETRI	
INCIDENZA ARMATURA TRAVI DI FONDAZIONE		
	MINIMA PERCENTUALE ARMATURA RISPETTO AL CLS	0.20%
	MASSIMA PERCENTUALE ARMATURA RISPETTO AL CLS	1.55%



**AUTOSTRADA VALDASTICO
A31 NORD**

1° LOTTO
Piovene Rocchette - Valle dell'Astico

PROGETTO DEFINITIVO

COMMITTENTE: S.p.A. AUTOSTRADA BRESCIA VERONA VICENZA PADOVA
Area Costruzioni Autostradali

PRESTATORE DI SERVIZI:
CONSORZIO RAETIA

ELABORATO: EDIFICI E STRUTTURE A CORREDO STRUTTURALE STRUTTURA IN C.A. - CARPENTERIE E ARMATURE - IMPALCATO 0

CAPO COMMESSA PER LA PROGETTAZIONE: Dott. Ing. Gabriele Costantini

PROGETTAZIONE: ING. ENRICO COCCARTE

REPRESENTANTE: Dott. Ing. Alberto Scotti

Rev.	Data	Descrizione	Redazione	Controllo	Approvazione	SCALA: 1:100
01	05/02/2021	PRIMA EMERSONE	ING. ENRICO COCCARTE	ING. ENRICO COCCARTE	ING. ENRICO COCCARTE	
02	05/02/2021	REVISIONE PER VERIFICA	ING. ENRICO COCCARTE	ING. ENRICO COCCARTE	ING. ENRICO COCCARTE	
03	05/02/2021	RECEPIMENTO OSSERVAZIONI	ING. ENRICO COCCARTE	ING. ENRICO COCCARTE	ING. ENRICO COCCARTE	

Progettazione: **09 05 02 002 02**

Rev. **02**