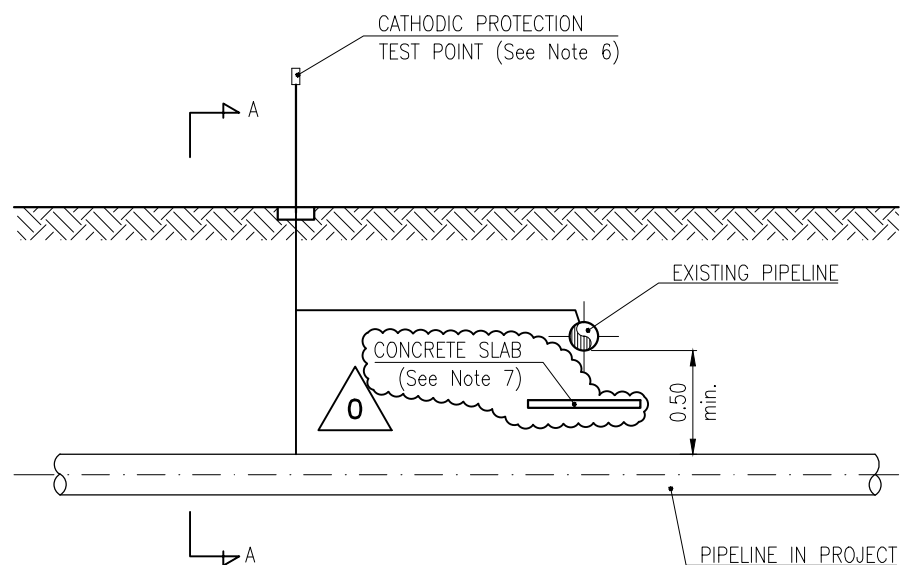
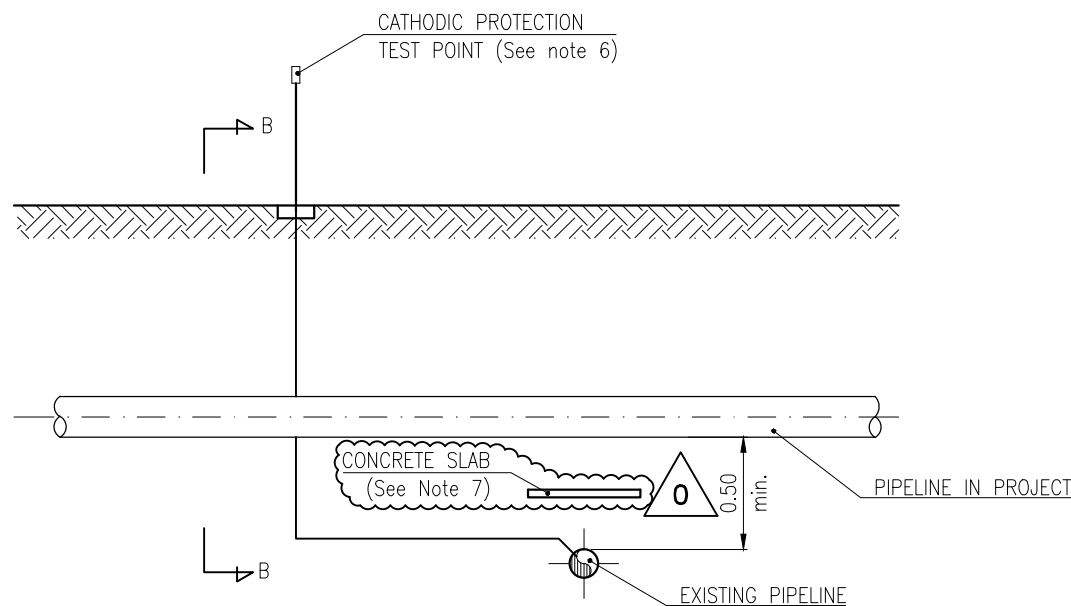


CROSSING UNDER EXISTING UTILITY

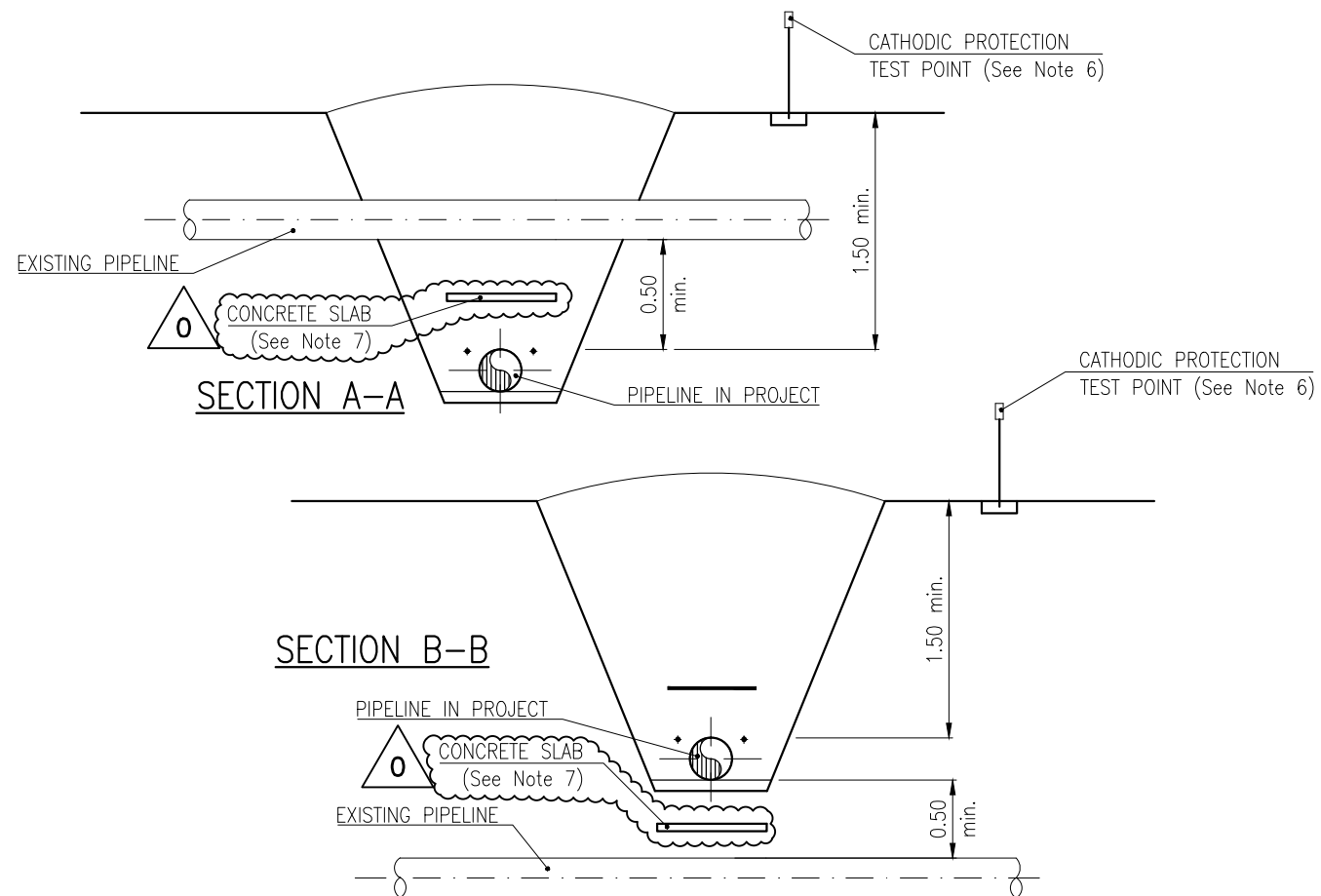


CROSSING OVER EXISTING UTILITY



**NOTE:**

1. THIS DRAWING REPRESENTS A TYPICAL AND DEFINES THE MINIMUM REQUIREMENTS FOR THE GAS, OIL, LPG AND LNG PIPELINE CROSSINGS.
2. THE DESIGN OF THE CROSSING SHALL BE IN ACCORDANCE WITH D.M. 17/04/2008.
3. THE EXACT LOCATION AND BURIAL OF THE SERVICE TO BE CROSSED SHALL BE DETERMINED WITH AN ON PURPOSE SURVEY. THE SERVICE OWNER SHALL BE MADE AWARE AND SHALL AGREE WITH THE PROPOSED CROSSING CONFIGURATION.
4. EQUIPOTENTIAL CONNECTION TO BE INSTALLED IF THE EXISTING PIPE HAS CP SYSTEM. BEFORE CONNECTION IT IS NECESSARY RECEIVE TO APPROVAL BY EXISTING SERVICE OWNER.
5. IN CASE OF TRENCHLESS INSTALLATION CASING PIPE WILL BE USED.
6. CP TEST POINT LOCATIONS SHALL BE PLACED IN AN AREA WERE THEY ARE LESS SUSCEPTIBLE TO DAMAGE AND VANDALISM.
7. CONCRETE SLAB SHALL BE USED BETWEEN THE TWO SERVICES IF THE DISTANCE BETWEEN THEM IS < 0.50m.
8. ALL MEASUREMENTS ARE IN METRES UNLESS OTHERWISE SPECIFIED.



PROJECT TITLE  
Trans Adriatic Pipeline Project/Onshore Pipeline Italy (OPLI)

DRAWING TITLE  
TYPICAL CROSSING OF GAS, OIL, LPG AND LNG PIPELINES

TAG NUMBERS

—  
—  
—

SUPPLIER DOCUMENT NUMBER  
P15IT03157-PPL-DW-000-016

REV. NO.  
0



PAGE

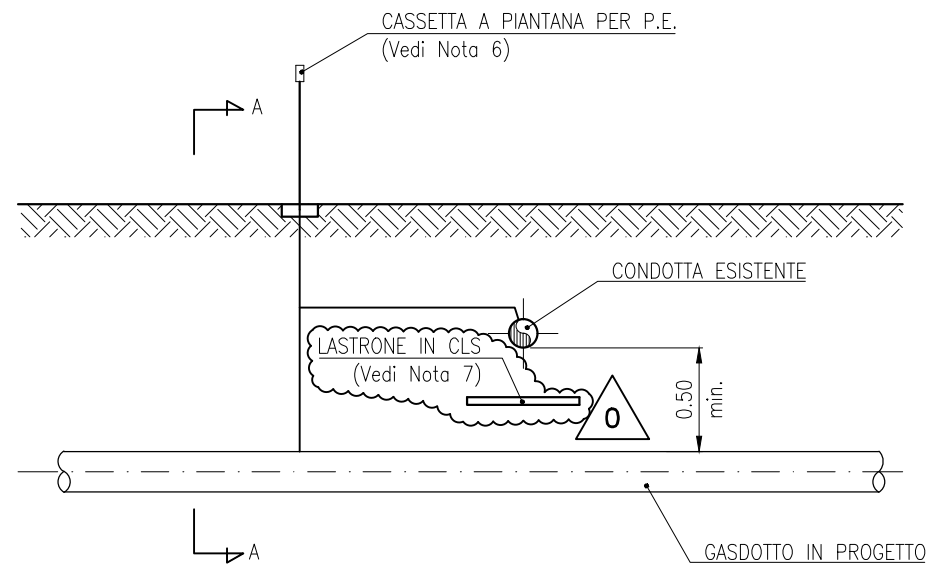
1 of 2

REV.	DESCRIPTION	IFC	EP	AB	AF	DATE
0	ISSUED FOR CONSTRUCTION	IFC	EP	AB	AF	10/10/16
B	RE-ISSUED FOR REVIEW	IFR	EP	AB	AF	06/09/16
A	ISSUED FOR REVIEW	IFR	EP	AB	AF	10/08/16
REV.	DESCRIPTION	PREP	VFY	APPR		DATE

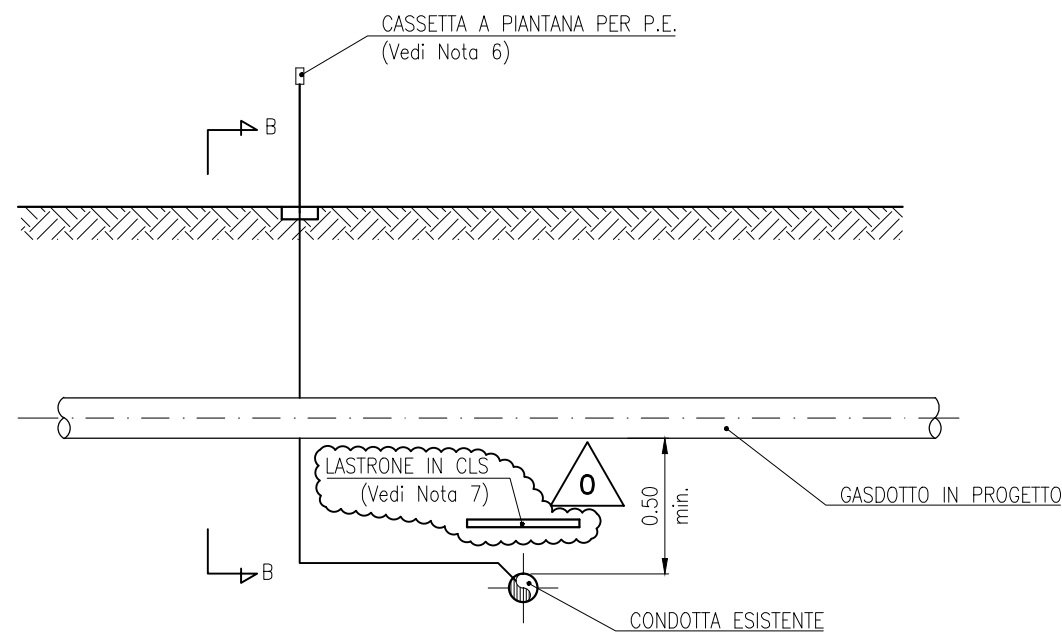
FORMAT <b>A3</b>	SCALE N.T.S.	FACILITY CODE —	SYSTEM NO. —	RD CODE	REVISION NO. <b>0</b>
---------------------	-----------------	--------------------	-----------------	---------	--------------------------

DRAWING NO.  
**IPL00-C5522-125-F-DFT-0016-01**

**SOTTOPASSI**

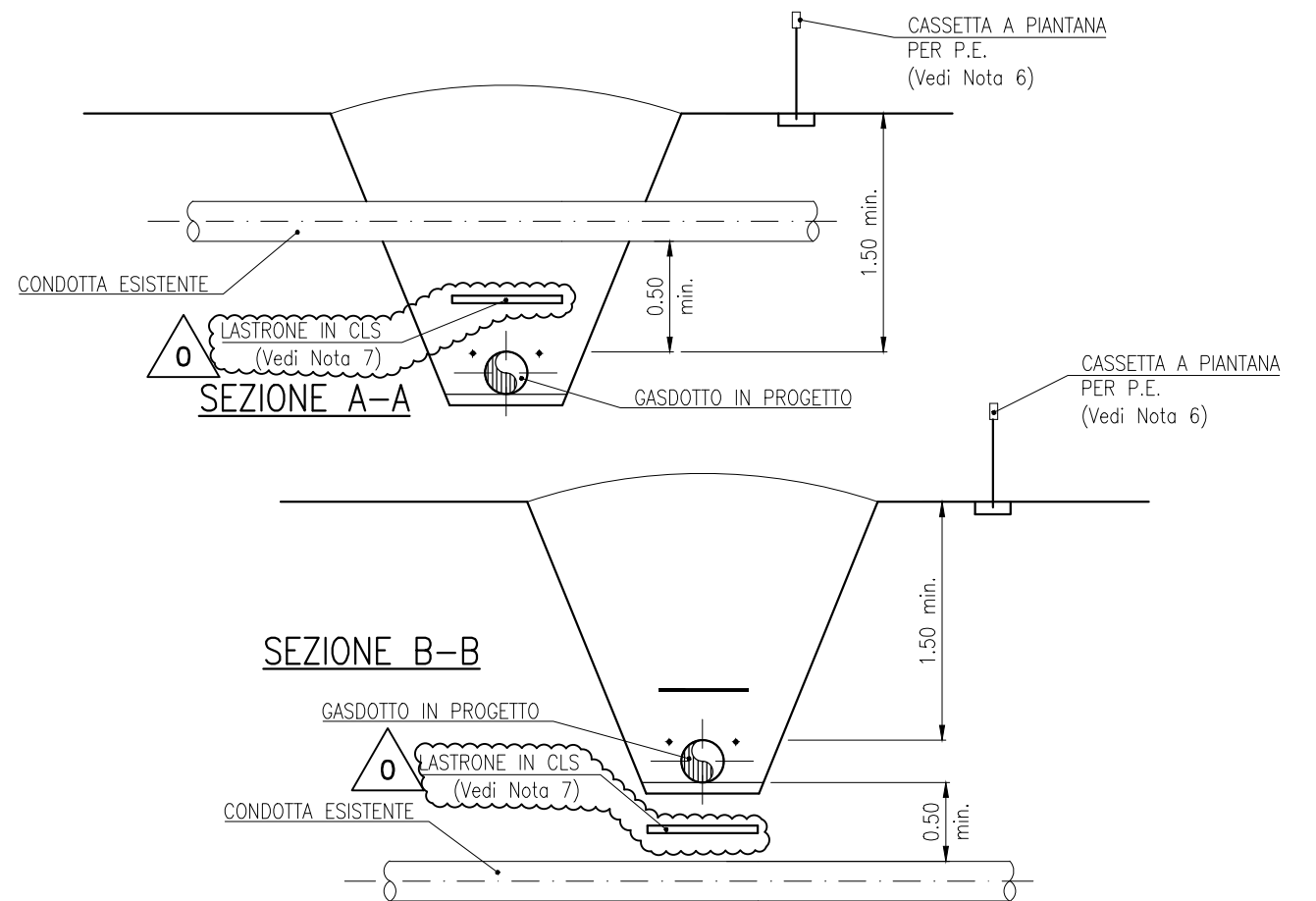


**SOVRAPPASSI**



**NOTE:**

- QUESTO DISEGNO RAPPRESENTA UN TIPICO E DEFINISCE I MINIMI REQUISITI PER L'ATTRAVERSAMENTO DI GASDOTTI, OLEODOTTI, CONDOTTE DI TRASPORTO PER GPL E GNL.
- LA PROGETTAZIONE DELL'ATTRAVERSAMENTO SARA' IN ACCORDO AL D.M. 17/04/2008 .
- L'ESATTA UBICAZIONE E COPERTURA DEL SERVIZIO DA ATTRAVERSARE SARA' DETERMINATA CON UNA APPOSITA INDAGINE. LA CONFIGURAZIONE DELL'ATTRAVERSAMENTO DOVRA' ESSERE CONCORDATA CON IL PROPRIETARIO O IL GESTORE DEL SERVIZIO.
- LA CONNESSIONE EQUIPOTENZIALE SARA' INSTALLATA SE LA CONDOTTA ESISTENTE E' DOTATO DI SISTEMA DI PROTEZIONE CATODICA. PRIMA DELLA CONNESSIONE E' NECESSARIO RICEVERE L'APPROVAZIONE DEL PROPRIETARIO DEL SERVIZIO ESISTENTE.
- IL TUBO DI PROTEZIONE VERRA' UTILIZZATO SOLTANTO IN CASO DI ATTRAVERSAMENTO CON TRIVELLA SPINGITUBO.
- LA CASSETTA A PIANTANA DOVRA' ESSERE INSTALLATA IN UNA ZONA DOVE SONO MENO PROBABILI DANNI E ATTI DI VANDALISMO.
- I LASTRONI IN CLS VERRANNO POSIZIONATI FRA I DUE SERVIZI SE LA DISTANZA FRA GLI STESSI SARA' < 0.50m.
- TUTTE LE MISURE SONO ESPRESSE IN METRI SE NON DIVERSAMENTE INDICATO.



Trans Adriatic Pipeline

SUPPLIER DOCUMENT NUMBER  
P15IT03157-PPL-DW-000-016

REV. NO.  
0



PROJECT TITLE

Trans Adriatic Pipeline Project/Onshore Pipeline Italy (OPLI)

DRAWING TITLE

ATTRAVERSAMENTO TIPICO DI GASDOTTI, OLEODOTTI, CONDOTTE DI TRASPORTO PER GPL E GNL

TAG NUMBERS

—  
—  
—

PAGE  
2 of 2

REV.	DESCRIPTION	IFC	EMANUELE PEDINI	ALESSANDRO BENVENUTI	ALBERTO FARINA	DATE
0	ISSUED FOR CONSTRUCTION	IFC				10/10/16
B	RE-ISSUED FOR REVIEW	IFR	EP	AB	AF	06/09/16
A	ISSUED FOR REVIEW	IFR	EP	AB	AF	10/08/16
REV.	DESCRIPTION		PREP	VFY	APPR	DATE

FORMAT  
A3

SCALE  
N.T.S.

FACILITY CODE

SYSTEM NO.

RD CODE

REVISION NO.  
0

DRAWING NO.

IPL00-C5522-125-F-DFT-0016-01