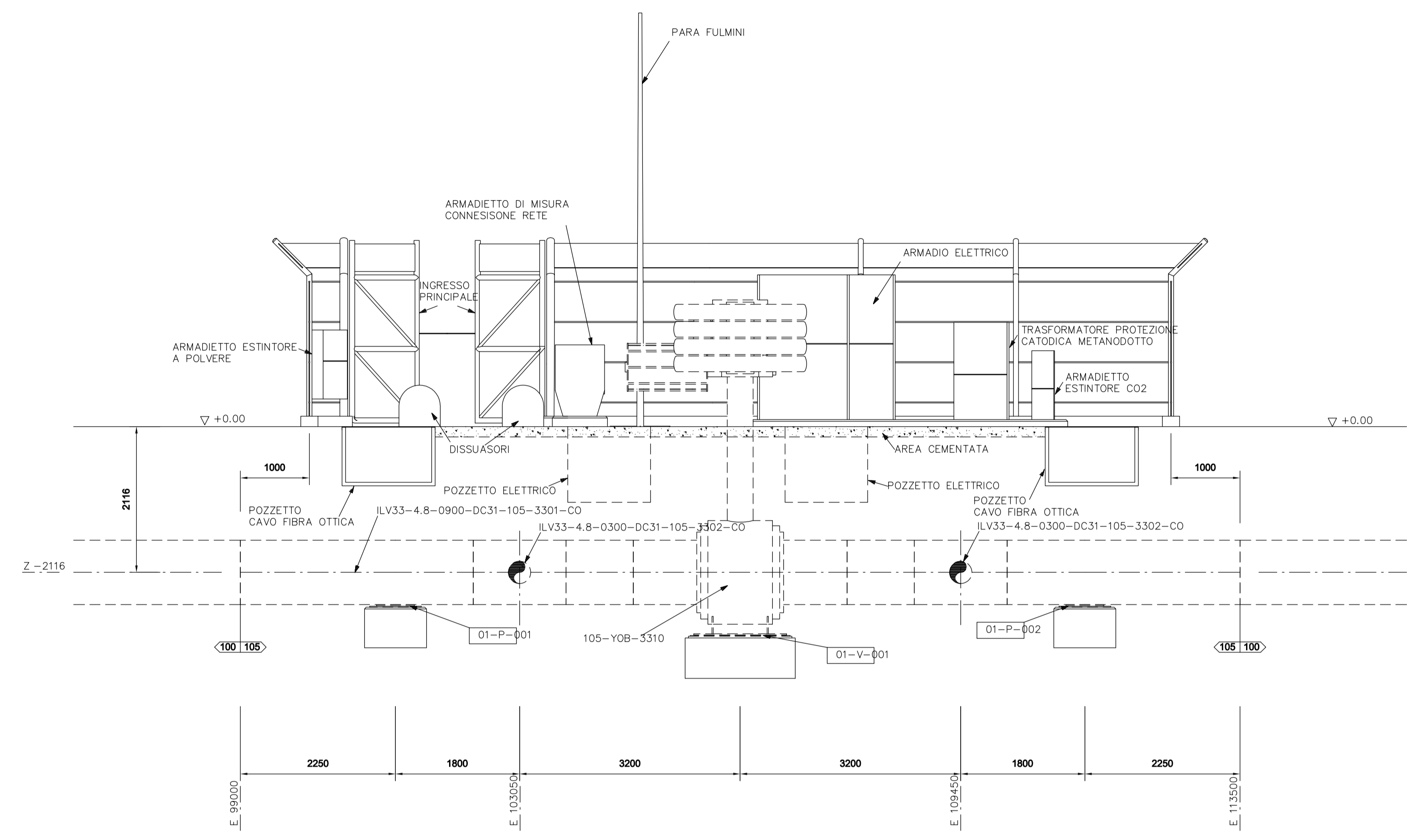
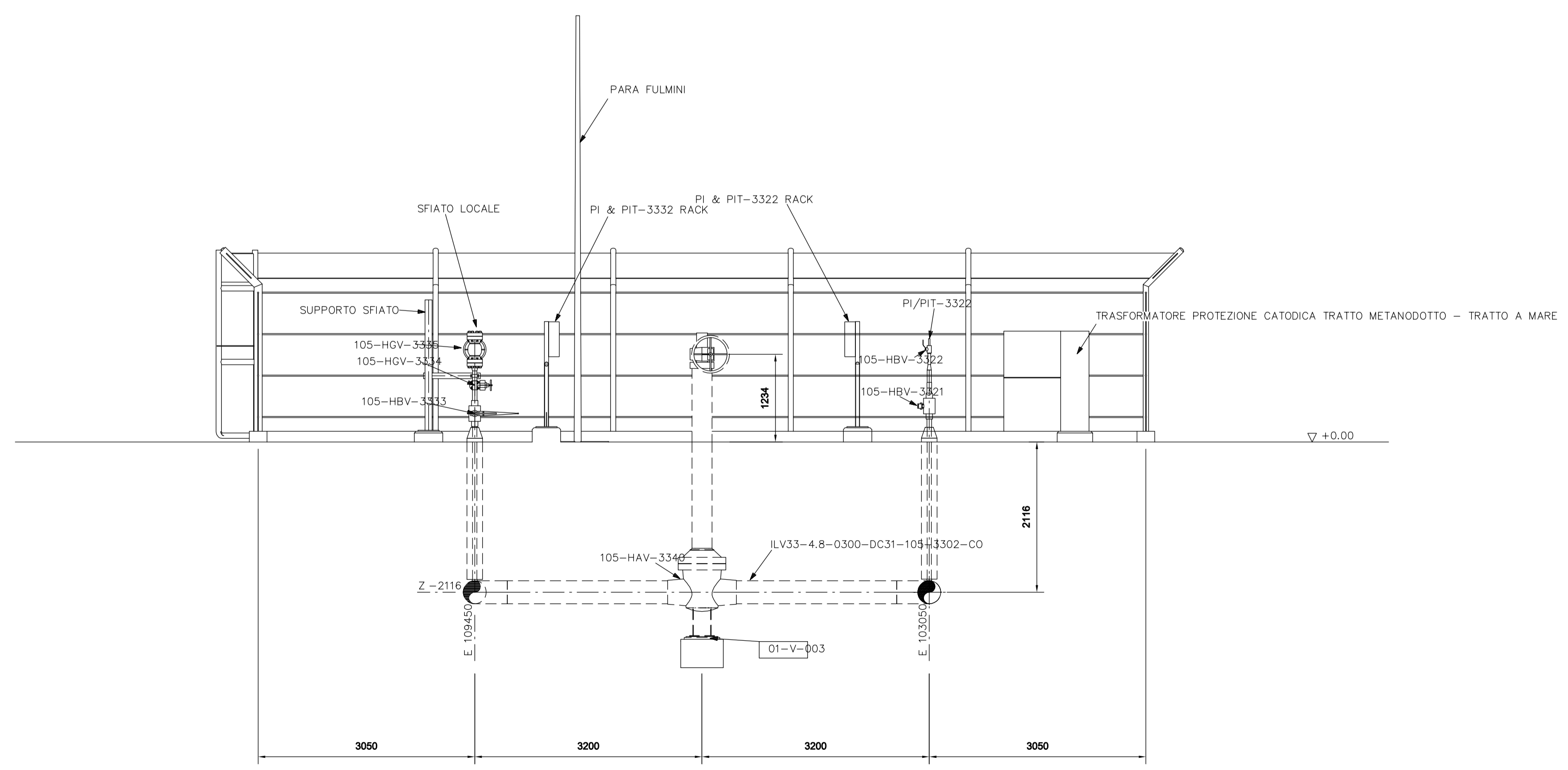


SEZIONE A  
1:50



SEZIONE B  
1:50



NOTE:

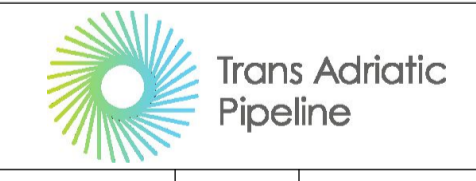
- 1) TUTTE LE COORDINATE SONO IN METRI. ALTEZZE E DIMENSIONI SONO IN MILLIMETRI.
- 2) LE COORDINATE IMPIANTO (N 100.000, E 100.000) SONO EQUIVALENTI ALLE COORDINATE GEOGRAFICHE N=4465038.35 E=277684.92 RISPETTO AL NORD  
LE COORDINATE SONO BASATE SUL SISTEMA:

GEODETTIC REFERENCE SYSTEM	
Datum: WGS84	Spheroid: WGS84
Projection: UTM (Zone 34)	Central meridian: 21°E
Vertical Ref. Level: LAT	

- 3) LA QUOTA IMPIANTO 0,00 CORRISPONDE ALLA QUOTA 9.00 m

LEGENDA:

▽ QUOTA IMPIANTO



SUPPLIER DOCUMENT NUMBER	REV. NO.	MAX STREICHER S.p.A.	Enerco
P15IT03157-PPN-DW-000-105	1		

1	RE-ISSUED FOR CONSTRUCTION	IFC	07/03/17
0	ISSUED FOR CONSTRUCTION	IFC	16/02/17
A	ISSUED FOR REVIEW	IFR	20/01/17
REV.	DESCRIPTION	PREP	VFY APPR DATE

PROJECT TITLE	TAG NUMBERS
Trans Adriatic Pipeline Project/Onshore Pipeline Italy (OPLI)	—
DRAWING TITLE	—
Title	—
VALVOLA DI LINEA ILV-33	PAGE
SEZIONI	1 of 2

FORMAT	SCALE	FACILITY CODE	SYSTEM NO.	RD CODE	REVISION NO.
A1	1:50	—	—	—	1

DRAWING NO. ILV33-C5522-105-L-DFB-0002-01

REFERENCE DRAWINGS	N°
LINE VALVE ILV-33 - PIPING LAYOUT - STATION OVERVIEW	ILV33-C5522-105-L-DFB-0001-01
BLOCK VALVE STATION ILV-33 - PIPING DETAILS	ILV33-C5522-105-L-DFS-0001-01

**NOTE:**

1) TUTTE LE COORDINATE SONO IN METRI. ALTEZZE E DIMENSIONI SONO IN MILLIMETRI.

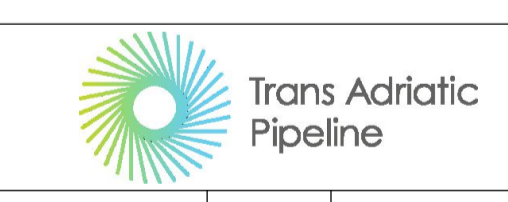
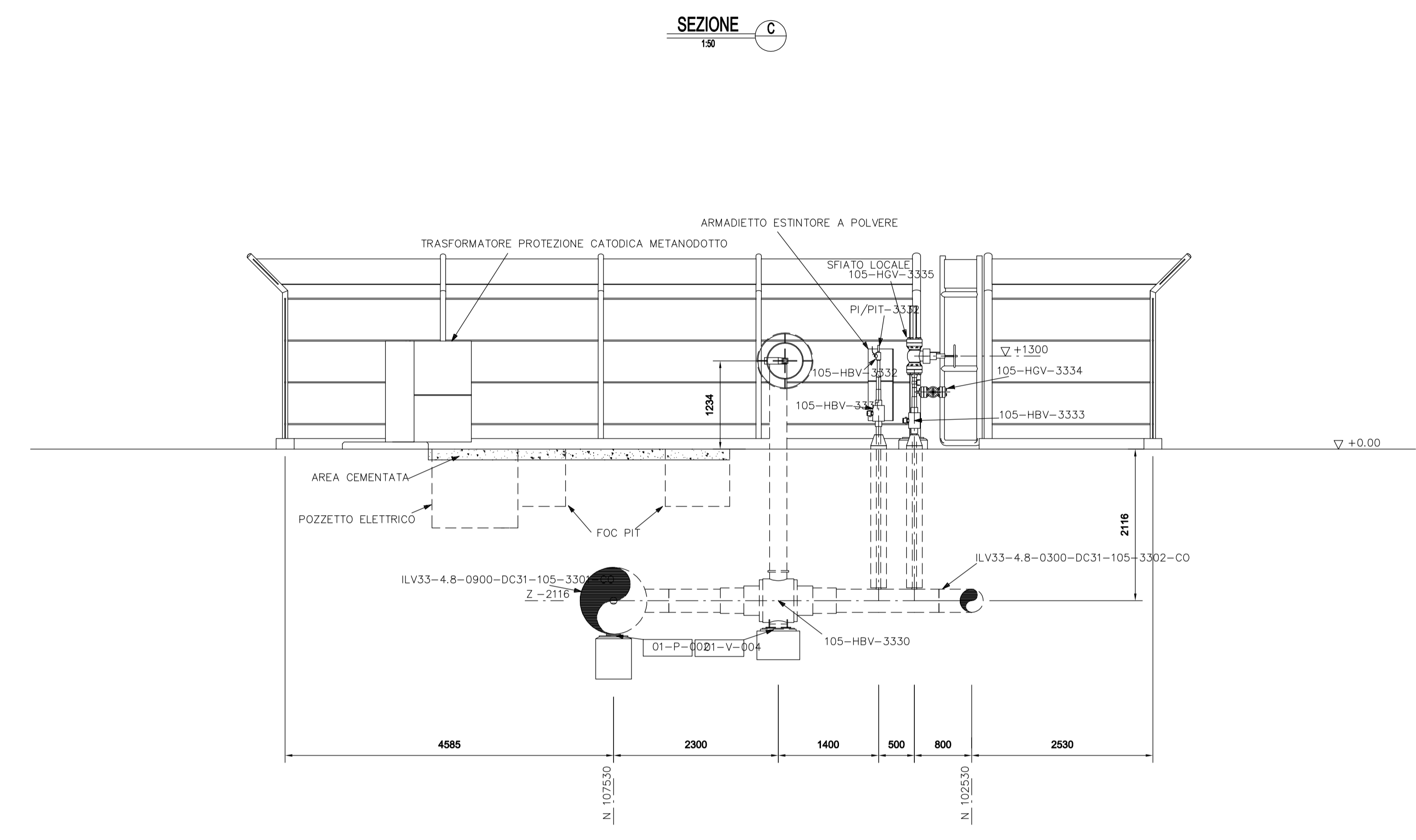
2) LE COORDINATE IMPIANTO (N 100.000, E 100.000) SONO EQUIVALENTI ALLE COORDINATE GEOGRAFICHE N=4465038.35 E=277684.92 RISPETTO AL NORD  
LE COORDINATE SONO BASATE SUL SISTEMA:

GEODETTIC REFERENCE SYSTEM	
Datum: WGS84	Spheroid: WGS84
Projection: UTM (Zone 34)	Central meridian: 21°E
Vertical Ref. Level: LAT	

3) LA QUOTA IMPIANTO 0,00 CORRISPONDE ALLA QUOTA 9.00 m

**LEGENDA:**

▽ QUOTA IMPIANTO



SUPPLIER DOCUMENT NUMBER	REV. NO.	MAX STREICHER S.p.A.	Enereco
P151T03157-PPN-DW-000-105	1		

1	RE-ISSUED FOR CONSTRUCTION	IFC	07/03/17		
0	ISSUED FOR CONSTRUCTION	IFC	16/02/17		
A	ISSUED FOR REVIEW	IFR	20/01/17		
REV.	DESCRIPTION	PREP	VFY	APPR	DATE

PROJECT TITLE	TAG NUMBERS
Trans Adriatic Pipeline Project/Onshore Pipeline Italy (OPLI)	—
DRAWING TITLE	—
Title	—
VALVOLA DI LINEA ILV-33	PAGE
SEZIONI	2 of 2

FORMAT	SCALE	FACILITY CODE	SYSTEM NO.	RD CODE	REVISION NO.
A1	1:50	—	—	—	1

DRAWING NO. ILV33-C5522-105-L-DFB-0002-01