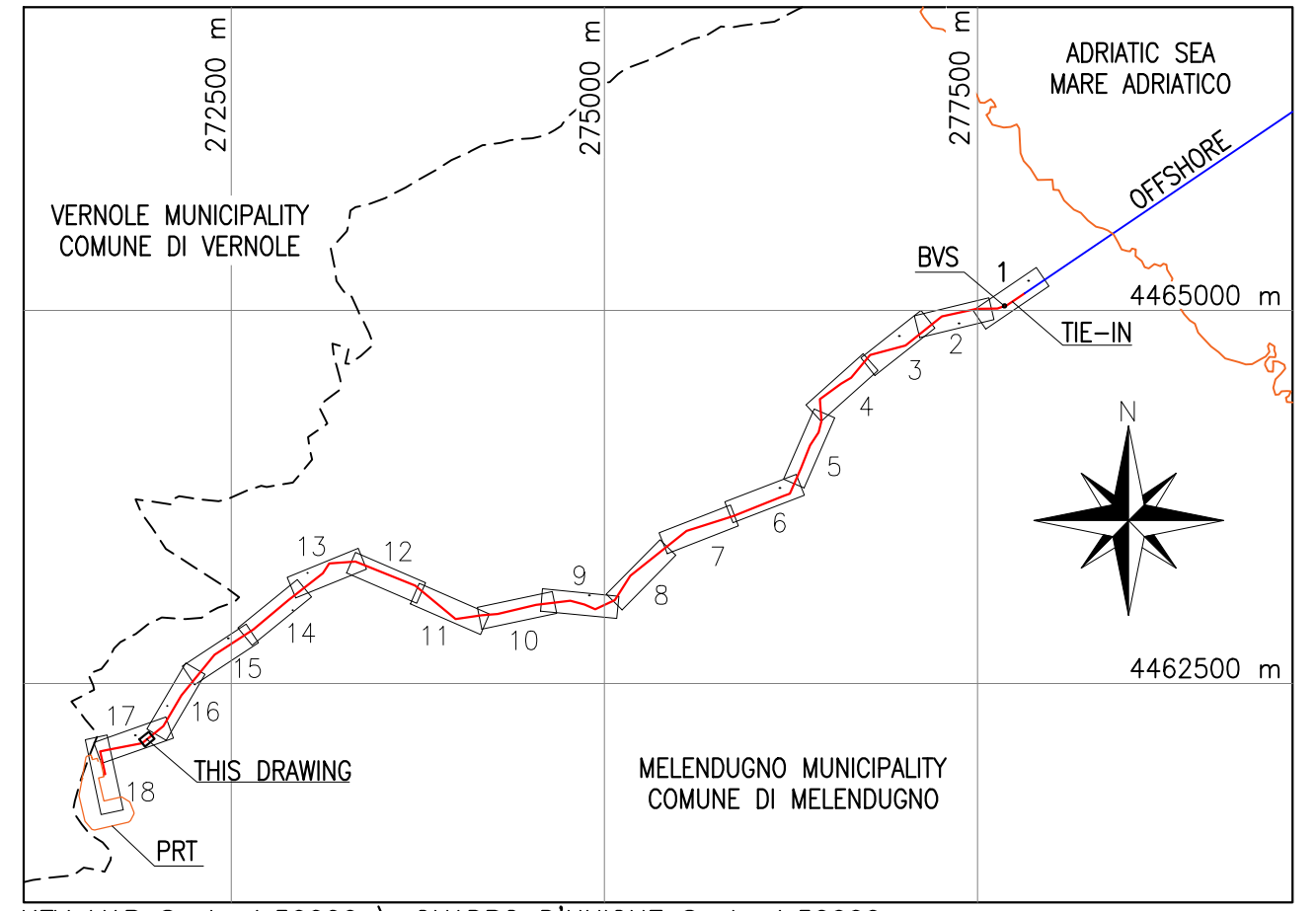
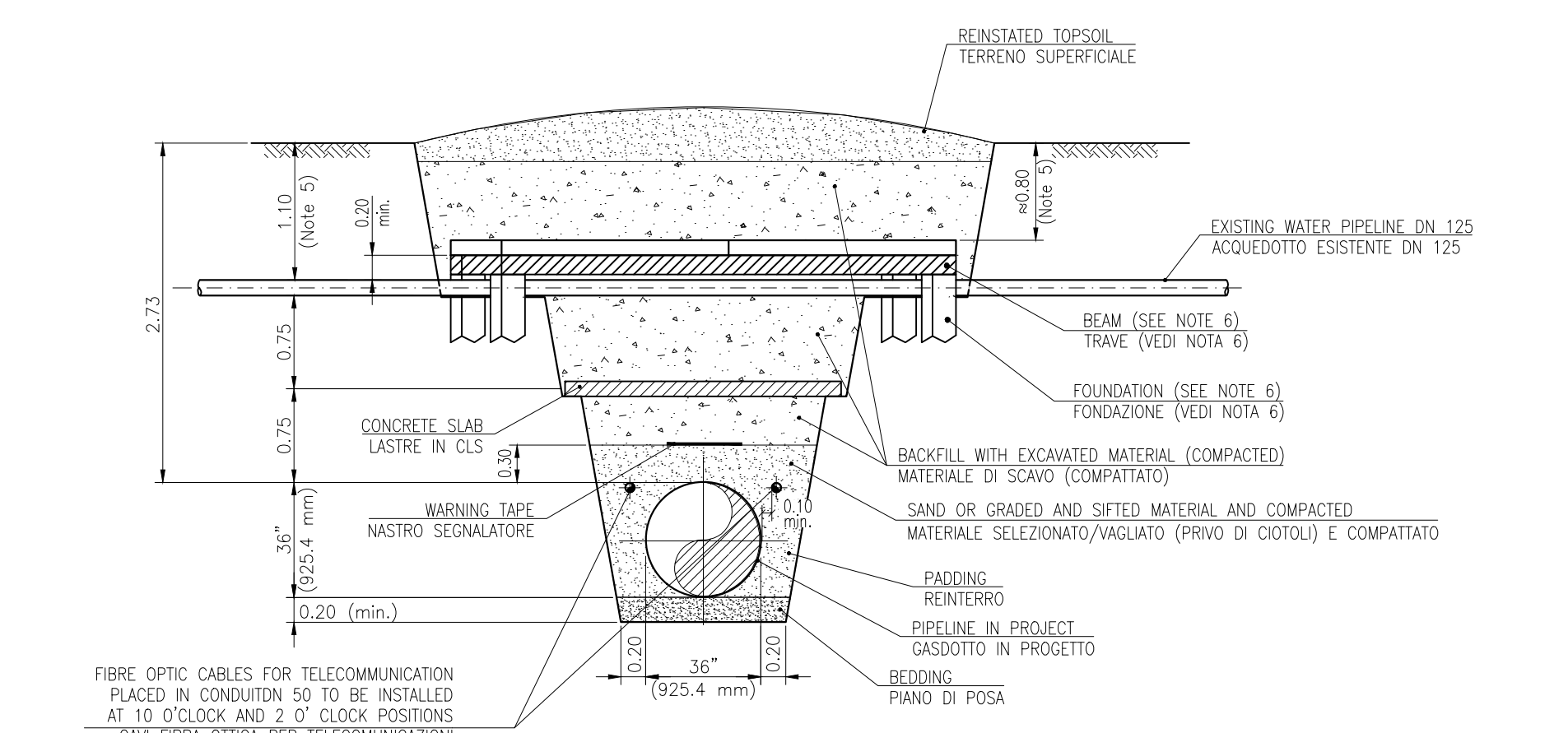


REFERENCE DRAWINGS	N°
TYPICAL WORKING STRIP FOR 36" PIPELINE	IPL00-C5522-100-F-DFB-0001-01
TYPICAL TRENCH FOR 36" PIPELINE	IPL00-C5522-100-F-DFB-0002-01
TYPICAL PIPELINE ROAD MARKER	IPL00-C5522-100-F-DFB-0003-01
TYPICAL FOR FIELD COOLD BEND	IPL00-C5522-100-F-DFB-0004-01
TYPICAL CONCRETE SLAB	IPL00-C5522-100-F-DFB-0010-01
TYPICAL CROSSING OF CLASS "I" ROADS	IPL00-C5522-100-F-DFB-0011-01
TYPICAL CROSSING OF POWER OR TELECOMMUNICATION CABLES WITHOUT CABLE CONDUIT	IPL00-C5522-100-F-DFB-0015-01
TYPICAL CROSSING OF METAL WATERPIPE	IPL00-C5522-100-F-DFB-0019-01
TYPICAL CROSSING OF SEWER AND COVERED CANALS	IPL00-C5522-100-F-DFB-0018-01
36" PIPELINE ROUTE MAP	IPL00-C5522-100-F-DFB-0017-01
ALIGNMENT SHEET FROM KP 7+500 TO KP 7+900 - SHEET N.17 OF 18	IPL00-C5522-100-F-DFB-0017-01
CADASTRAL MAP	IPL00-C5522-000-F-DFK-0001-01

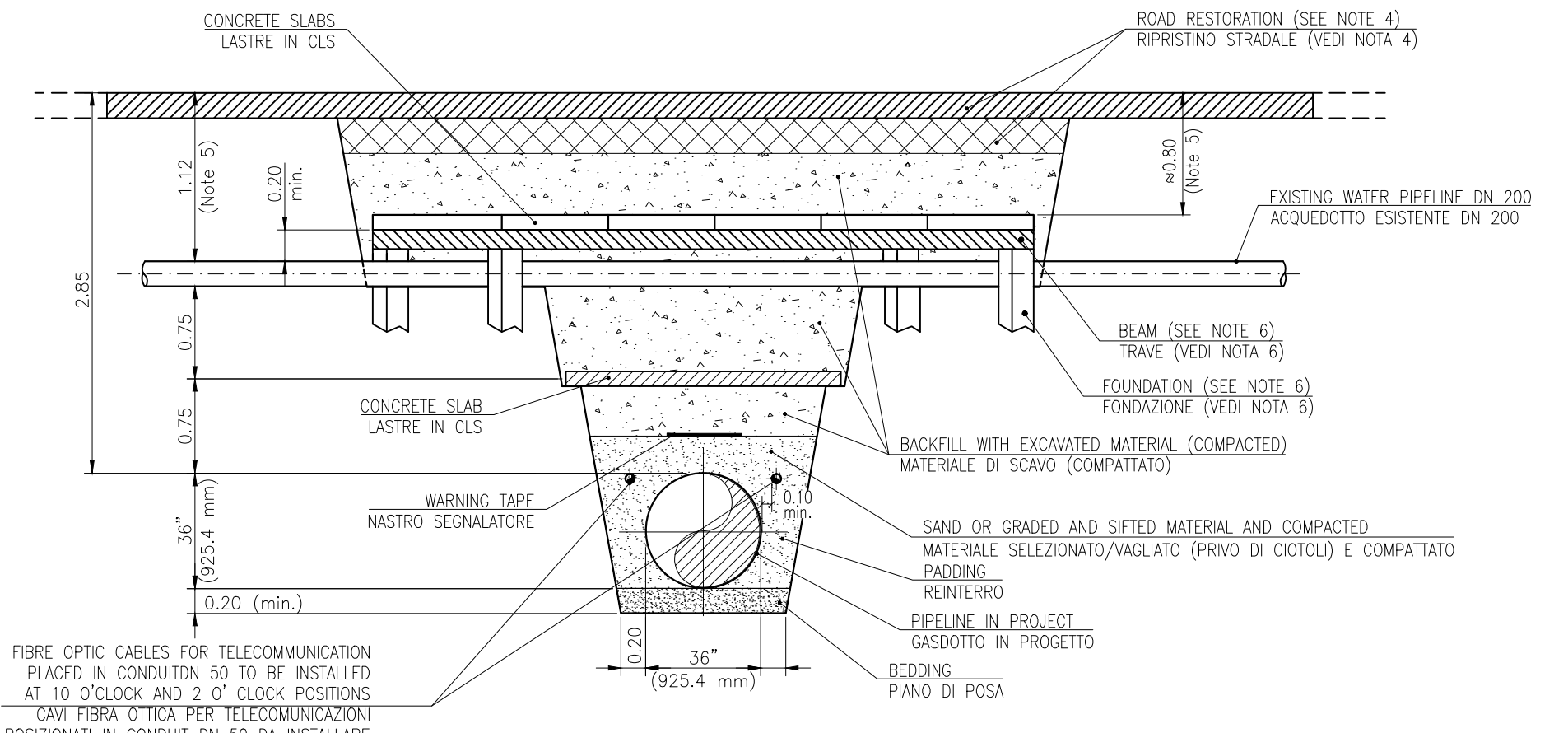


KEY MAP Scale 1:50000 \ QUADRO D'UNIONE Scala 1:50000

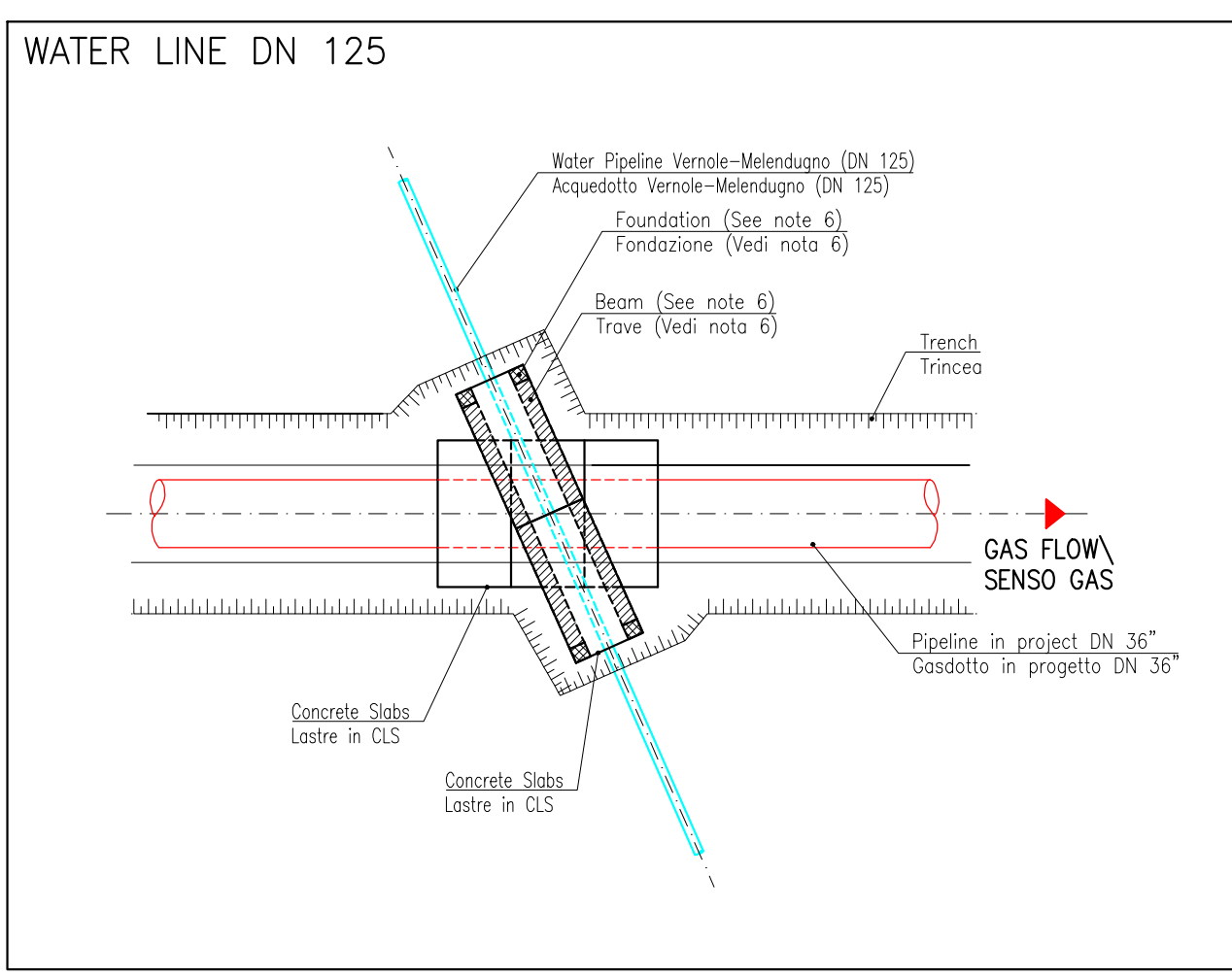
GEODETIC REFERENCE SYSTEM	
Datum: WGS84	Spheroid: WGS84
Projection: UTM (Zone 34)	Central meridian: 21°E
Vertical Ref. Level: LAT	



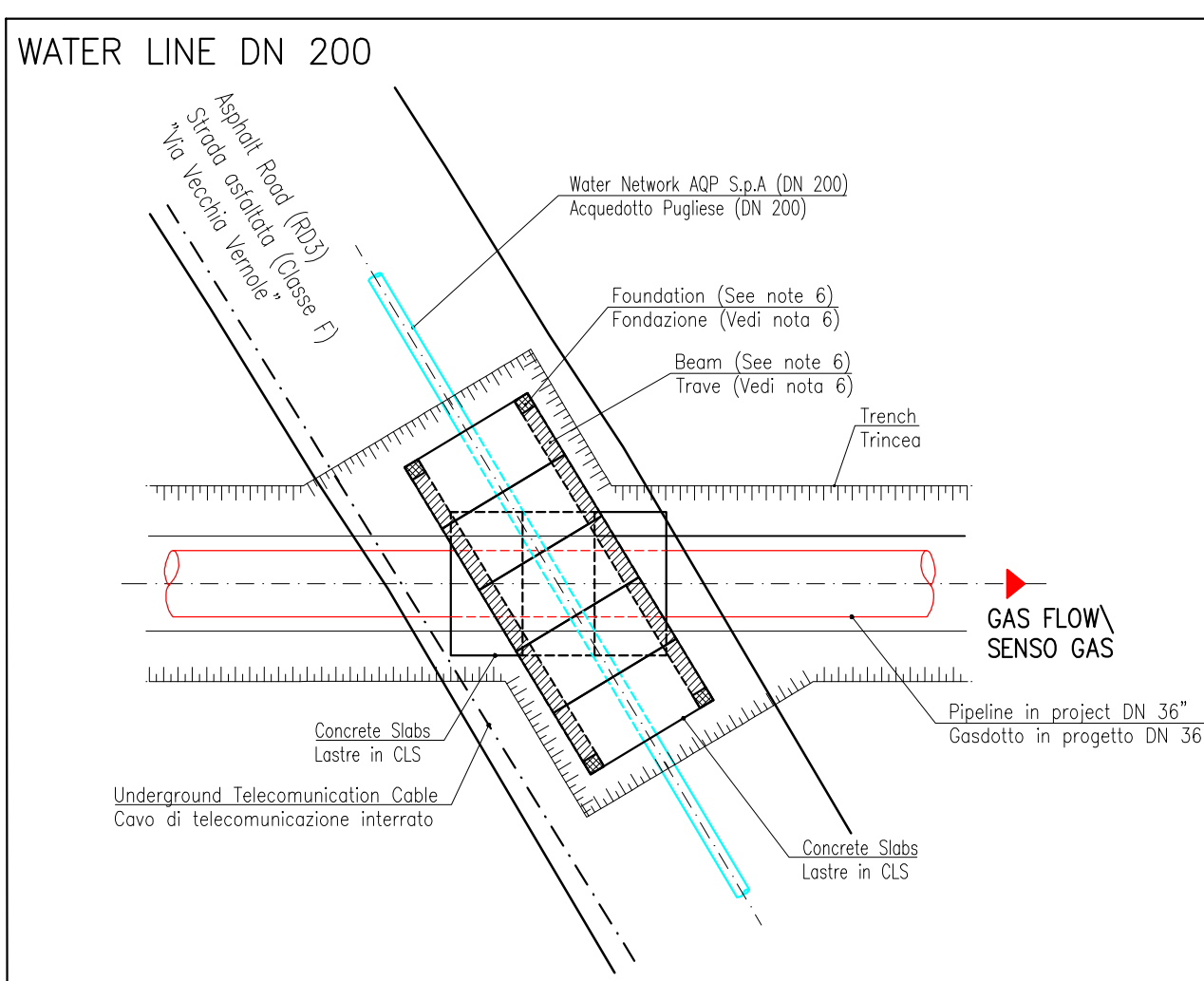
SECTION X-X  
N.T.S.  
SEZIONE X-X  
N.T.S.



SECTION Y-Y  
N.T.S.  
SEZIONE X-X  
N.T.S.



DETAIL 'A' (Scale 1:100) \ DETTAGLIO 'A' (Scala 1:100)



DETAIL 'B' (Scale 1:100) \ DETTAGLIO 'B' (Scala 1:100)

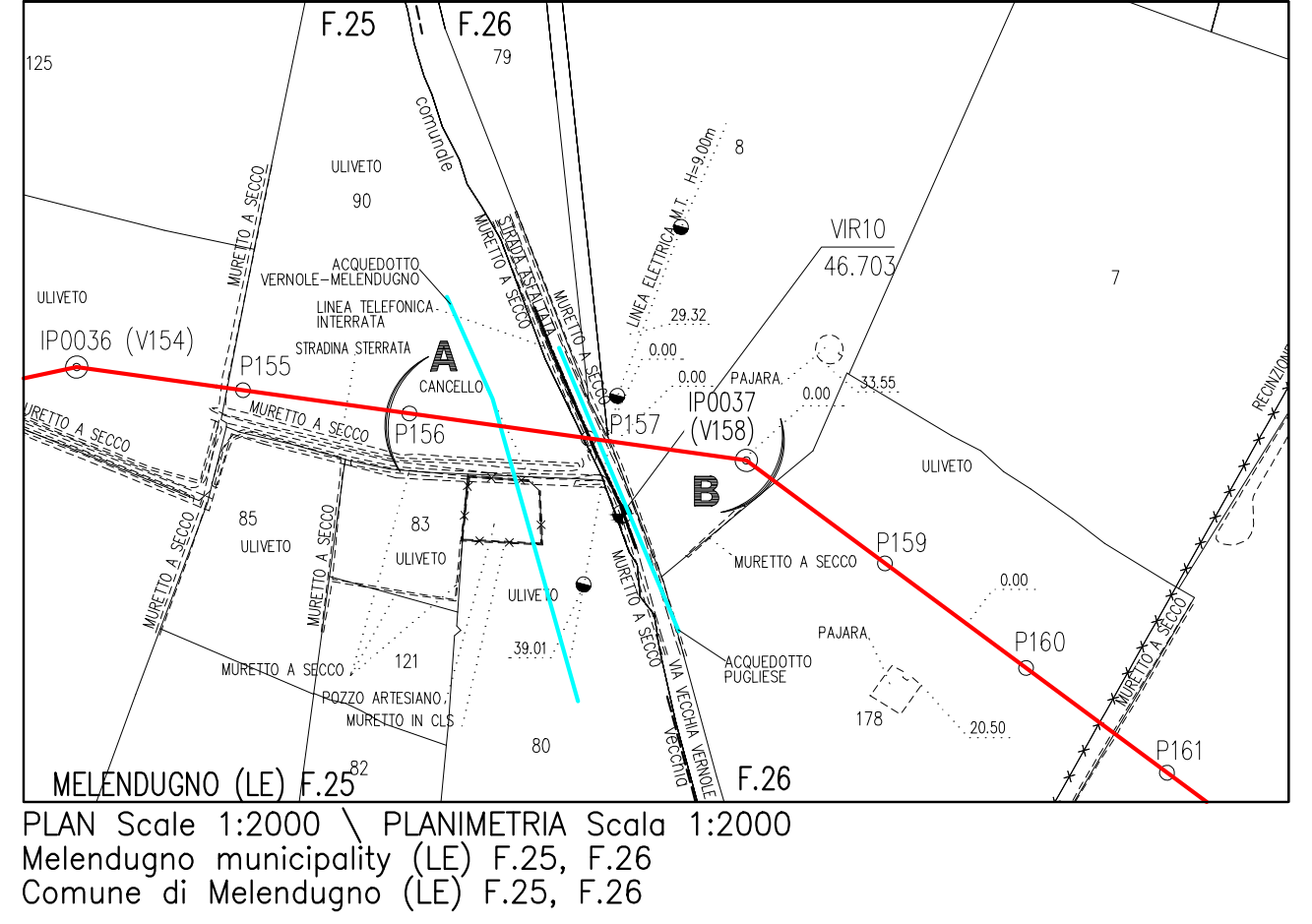
TOPOGRAPHICAL LEGEND: \ LEGENDA TOPOGRAFICA:

IP0101	ROUTING OF TAP N.G. PIPELINE TRACCIATO CONDOTTA TAP N.G.	OTHER FENCE ALTRE RECINZIONI
IP0102	ROW BOUNDARIES LIMITE PISTA DI LAVORO	STONE WALL MURO IN PIETRA
---	DIRT ROAD STRADA STERRATA	UNDERGROUND CABLE CAVO INTERRATO
---	ASPHALT ROAD STRADA ASFALTATA	WATER PIPELINE ACQUEDOTTO
---	CREST OF SLOPE CICLO SCARPATA	SEWER FOGNATURA
---	TOE OF SLOPE FONDO SCARPATA	

PLAN/PLANIMETRIA 1:200 (Size A3: 1:400)  
SECTION A-B/SEZIONE A-B 1:100 (Size A3: 1:200)  
HORIZONTAL & VERTICAL SCALE \ SCALA ORIZZONTALE E VERTICALE  
NOTE: SCALE WILL BE REDUCED BY HALF, IF CROSSING IS PRINTED ON A3 SIZE  
NOTE: LA SCALA SI RIDUCE DELLA META' SE L'ATTRAVERSAMENTO E' STAMPATO NEL FORMATO A3

- NOTES:
- ON AREAS WHERE ARE PRESENT EXISTING UTILITIES, CONSTRUCTION SHALL START ONLY WITH WRITTEN ACCEPTANCE OF THE UTILITIES OWNERS AND IN THE PRESENCE OF THE EXISTING UTILITY OWNER REPRESENTATIVE.
  - EXCAVATION IN PROXIMITY OF UNDERGROUND UTILITIES SHALL BE DONE MANUALLY.
  - TRENCH EXCAVATION AND CONSTRUCTION WORKS SHALL BE EXECUTED IN COMPLIANCE WITH HSE REQUIREMENTS AND LIMITATIONS.
  - THE CROSSED ROADS SHALL BE REINSTATED TO THE ORIGINAL CONDITION OR IN ACCORDANCE WITH THE PRESCRIPTION OF THE LANDOWNER/ROAD OWNER.
  - THE POSITION AND THE DEPTH OF THE EXISTING SERVICES IS INDICATIVE ONLY, THE CORRECT POSITION AND DEPTH SHALL BE VERIFIED BEFORE STARTING WITH THE CONSTRUCTION ACTIVITIES.
  - THE FOUNDATION SHALL BE ON SOLID/ROCKY GROUND, DIMENSION OF THE FOUNDATION AND BEAM SHALL BE DEFINED BASED ON THE REAL CONDITION OF THE GROUND AND LOADS, BACKFILLING MATERIAL BETWEEN THE TWO PIPES AND BETWEEN AQP WATER LINE AND SLABS SHALL BE PROPERLY COMPACTED.
  - ALL DIMENSIONS ARE IN METERS UNLESS OTHERWISE SPECIFIED.

- NOTE:
- SCAVI IN PROSSIMITA' DI SERVIZI ESISTENTI POSSONO ESSERE ESEGUITI SOLO SE OTTENUTO IL PERMESSO DA PARTE DELL'ENTE PROPRIETARIO E IN PRESENZA DI UN RAPPRESENTANTE DELL'ENTE.
  - SCAVI IN PROSSIMITA' DI SERVIZI INTERRATI DOVRANNO ESSERE ESEGUITI MANUALMENTE.
  - GLI SCAVI E I LAVORI DI COSTRUZIONE DOVRANNO ESSERE ESEGUITI IN ACCORDO AI REQUISITI E ALLE LIMITAZIONI DI SICUREZZA.
  - LE STRADE ATTRAVERSATE DOVRANNO ESSERE RIPRISTINATE ALLE CONDIZIONI PRECEDENTI AI LAVORI O IN ACCORDO ALLE PRESCRIZIONI DEI PROPRIETARI E DELL'ENTE PROPRIETARIO.
  - LA POSIZIONE E LA PROFONDITA' DEI SERVIZI ESISTENTI E' SOLO INDICATIVA, LA CORRETTA POSIZIONE E PROFONDITA' DEVE ESSERE VERIFICATA PRIMA DI INIZIARE LA ATTIVITA' DI COSTRUZIONE.
  - LE FONDAZIONI DI SUPPORTO DELLE BEOLE DOVRANNO ESSERE IMMERSATE IN TERRENO NATURALE PORTANTE O DIRETTAMENTE IN ROCCIA. IL DIMENSIONAMENTO DELLE FONDAZIONI E DELLE TRAVI DOVRA' ESSERE VALUTATO IN ACCORDO ALLE REALI CARATTERISTICHE DEL TERRENO E DEI CARICHI. IL MATERIALE DI BACKFILLING INTERPOSTO TRA LE DUE CONDOTTE E TRA LA CONDOTTA AQP E LE BEOLE DOVRA' ESSERE OPPORTUNAMENTE COMPATTATO.
  - TUTTE LE MISURE SONO IN METRI TRANNE DOVE SPECIFICAMENTE INDICATO.



PLAN Scale 1:2000 \ PLANIMETRIA Scale 1:2000  
Melendugno municipality (LE) F.25, F.26  
Comune di Melendugno (LE) F.25, F.26

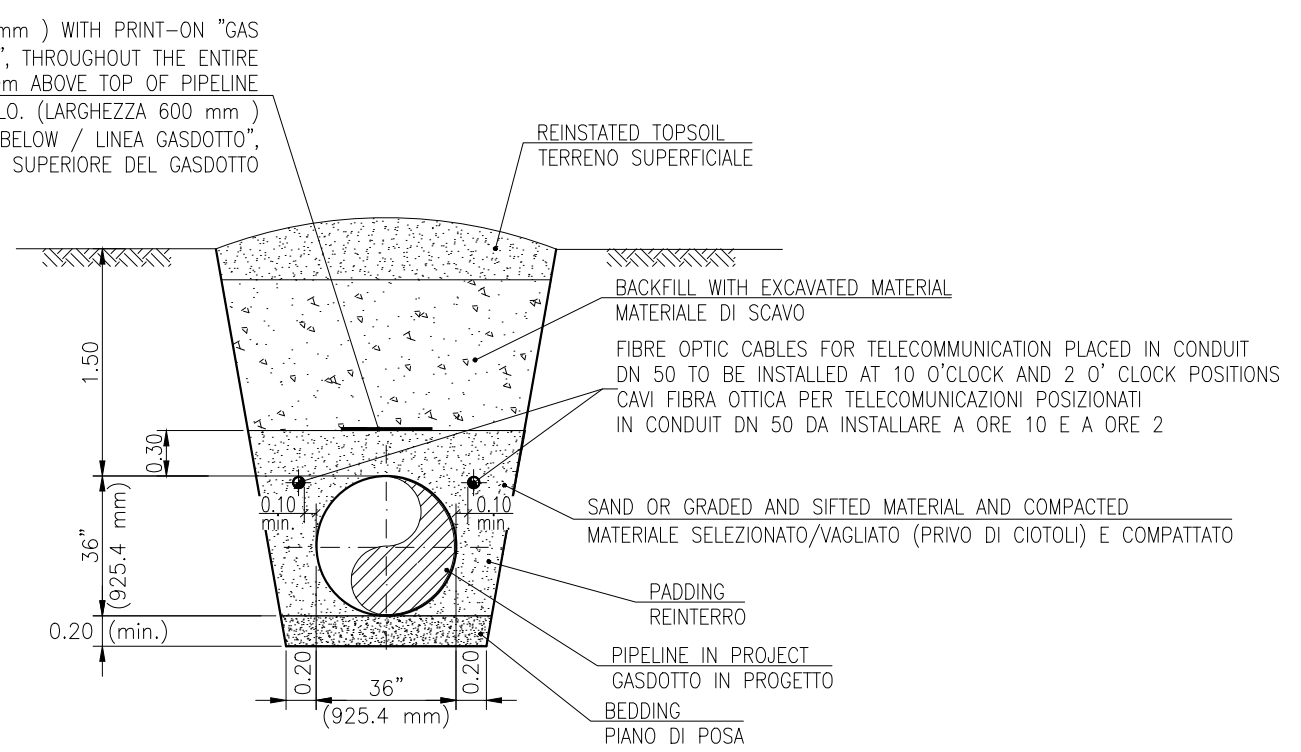
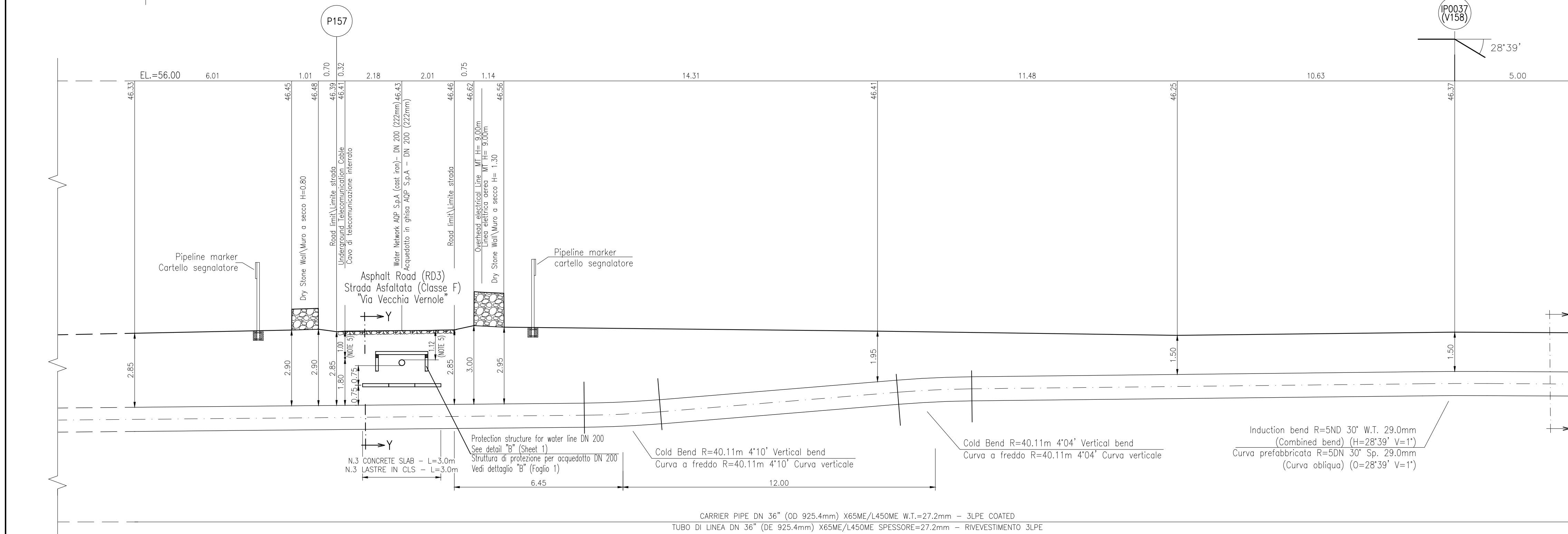
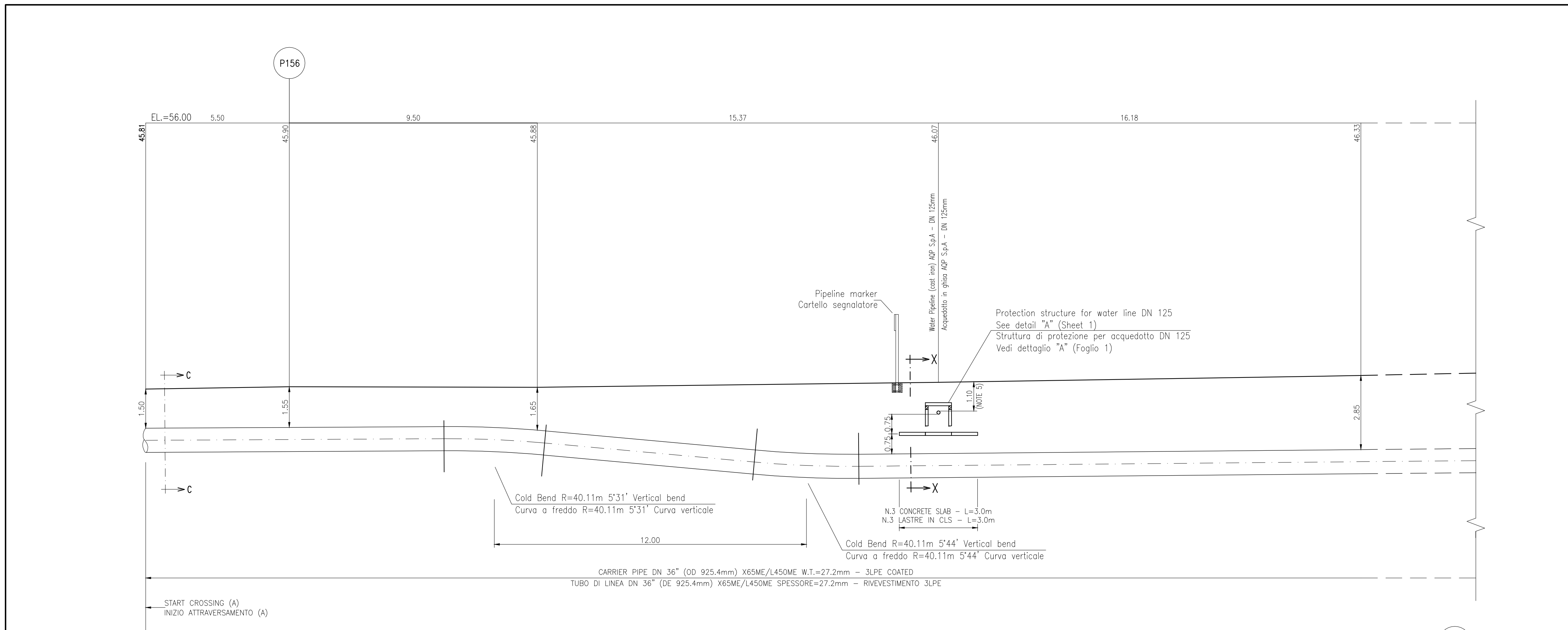


SUPPLIER DOCUMENT NUMBER	REV. NO.	MAX STREICHER S.p.A.	Enerco
P15IT03157-PPL-DW-000-043	4		

REV.	DESCRIPTION	PREP	VFY	APPR	DATE
4	RE-ISSUED FOR CONSTRUCTION	IFC	EMANUELE ALESSANDRO	MARCO	28/06/17
3	RE-ISSUED FOR CONSTRUCTION	IFC	EMANUELE ALESSANDRO	MARCO	09/01/17
2	RE-ISSUED FOR CONSTRUCTION	IFC	EMANUELE ALESSANDRO	MARCO	15/12/16
1	RE-ISSUED FOR CONSTRUCTION	IFC	EMANUELE ALESSANDRO	MARCO	07/12/16
0	ISSUED FOR CONSTRUCTION	IFC	EMANUELE ALESSANDRO	MARCO	30/09/16
A	ISSUED FOR REVIEW	IFR	EMANUELE ALESSANDRO	MARCO	30/09/16

PROJECT TITLE	TAG NUMBERS
Trans Adriatic Pipeline Project/Onshore Pipeline Italy (OPLI)	---
DRAWING TITLE	---
CROSSING OF "ACQUEDOTTO PUGLIESE" WATERLINE DN 125 KP 7+550, WATERLINE DN 200 VERNOLE-MELENUGNO AND ROAD "VIA VECCHIA VERNOLE" KP 7+574	---
ATTRAVERSAMENTO DELL'ACQUEDOTTO PUGLIESE DN 125 KP 7+550, ACQUEDOTTO PUGLIESE DN 200 VERNOLE-MELENUGNO E DELLA STRADA VIA VECCHIA VERNOLE KP 7+574	PAGE 1 of 3
FORMAT	REVISION NO.
A1	4

DRAWING NO. IPL00-C5522-100-F-DFB-0005-01

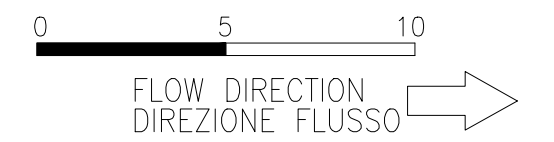


**NOTES:**

- ON AREAS WHERE ARE PRESENT EXISTING UTILITIES, CONSTRUCTION SHALL START ONLY WITH WRITTEN ACCEPTANCE OF THE UTILITIES OWNERS AND IN THE PRESENCE OF THE EXISTING UTILITY OWNER REPRESENTATIVE.
- EXCAVATION IN PROXIMITY OF UNDERGROUND UTILITIES SHALL BE DONE MANUALLY.
- TRENCH EXCAVATION AND CONSTRUCTION WORKS SHALL BE EXECUTED IN COMPLIANCE WITH HSE REQUIREMENTS AND LIMITATIONS.
- THE CROSSED ROADS SHALL BE REINSTATED TO THE ORIGINAL CONDITION OR IN ACCORDANCE WITH THE PRESCRIPTION OF THE LANDOWNER/ROAD OWNER.
- THE POSITION AND THE DEPTH OF THE EXISTING SERVICES IS INDICATIVE ONLY, THE CORRECT POSITION AND DEPTH SHALL BE VERIFIED BEFORE STARTING WITH THE CONSTRUCTION ACTIVITIES.
- THE FOUNDATION SHALL LIE ON SOLID/ROCKY GROUND, DIMENSION OF THE FOUNDATION AND BEAM SHALL BE DEFINED BASED ON THE REAL CONDITION OF THE GROUND AND LOADS. BACKFILLING MATERIAL BETWEEN THE TWO PIPES AND BETWEEN ADP WATER LINE AND SLABS SHALL BE PROPERLY COMPACTED.
- ALL DIMENSIONS ARE IN METERS UNLESS OTHERWISE SPECIFIED.

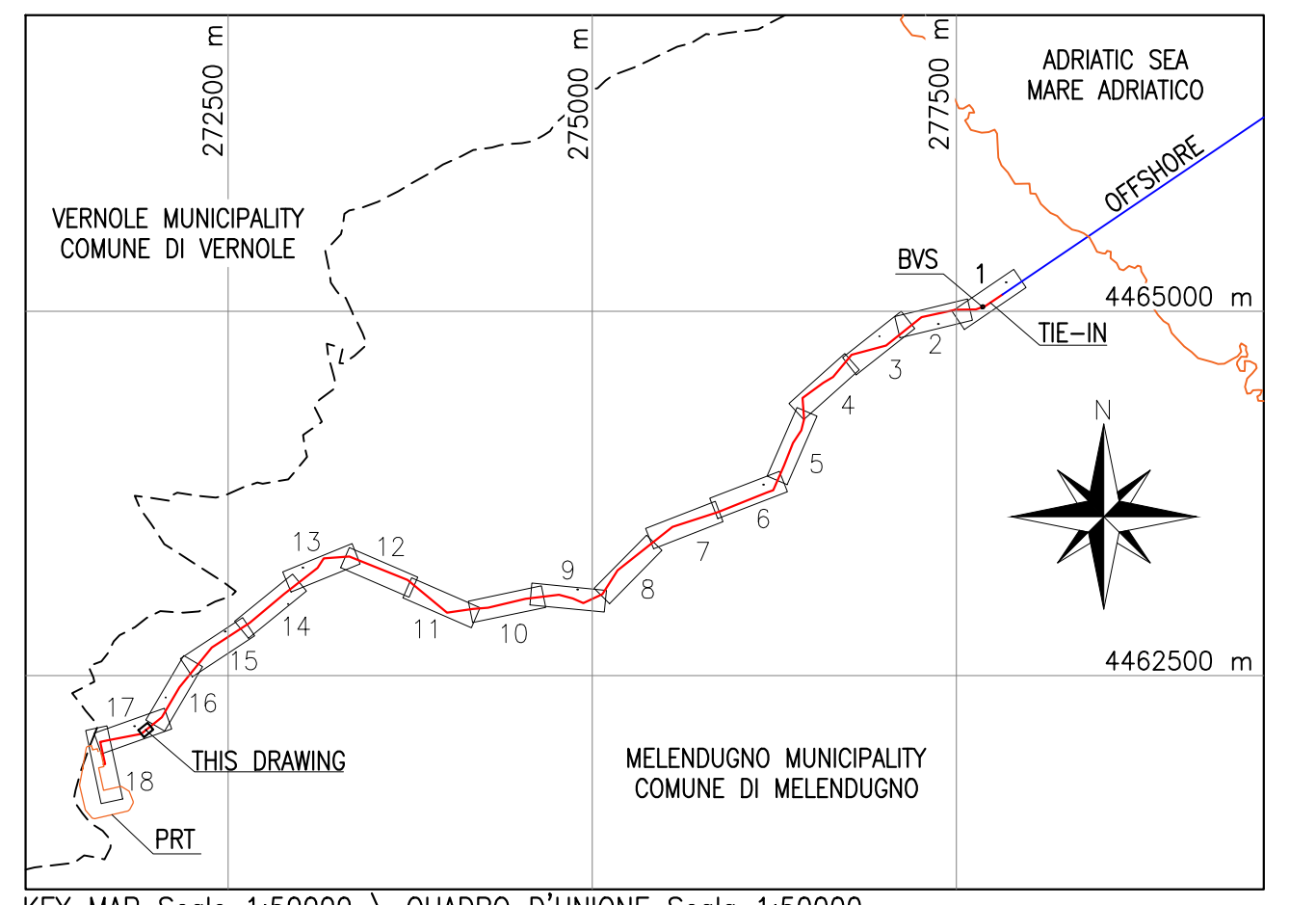
**NOTE:**

- SCAVI IN PROSSIMITA' DI SERVIZI ESISTENTI POSSONO ESSERE ESEGUITI SOLO SE OTTENUTO IL PERMESSO DA PARTE DELL'ENTE PROPRIETARIO E IN PRESENZA DI UN RAPPRESENTANTE DELL'ENTE.
- SCAVI IN PROSSIMITA' DI SERVIZI INTERRATI DOVRANNO ESSERE ESEGUITI MANUALMENTE.
- GLI SCAVI E I LAVORI DI COSTRUZIONE DOVRANNO ESSERE ESEGUITI IN ACCORDO AI REQUISITI E ALLE LIMITAZIONI DI SICUREZZA.
- LE STRADE ATTRAVERSADE DOVRANNO ESSERE RIPRISTINATE ALLE CONDIZIONI PRECEDENTI AI LAVORI O IN ACCORDO ALLE PRESCRIZIONI DEI PROPRIETARI E DELL'ENTE PROPRIETARIO.
- LA POSIZIONE E LA PROFONDITA' DEI SERVIZI ESISTENTI E' SOLO INDICATIVA. LA CORRETTA POSIZIONE E PROFONDITA' DEVE ESSERE VERIFICATA PRIMA DI INIZIARE LA ATTIVITA' DI COSTRUZIONE.
- LE FONDAZIONI DI SUPPORTO DELLE BEOLE DOVRANNO ESSERE IMMERSATE IN TERRENO NATURALE PORTANTE O DIRETTAMENTE IN ROCCIA. IL DIMENSIONAMENTO DELLE FONDAZIONI E DELLE TRAVI DOVRA' ESSERE VALUTATO IN ACCORDO ALLE REALI CARATTERISTICHE DEL TERRENO E DEI CARICHI. IL MATERIALE DI BACKFILLING INTERPOSTO TRA LE DUE CONDOTTE E TRA LA CONDOTTA ADP E LE BEOLE DOVRA' ESSERE OPPORTUNAMENTE COMPATTATO.
- TUTTE LE MISURE SONO IN METRI TRANNE DOVE SPECIFICAMENTE INDICATO.

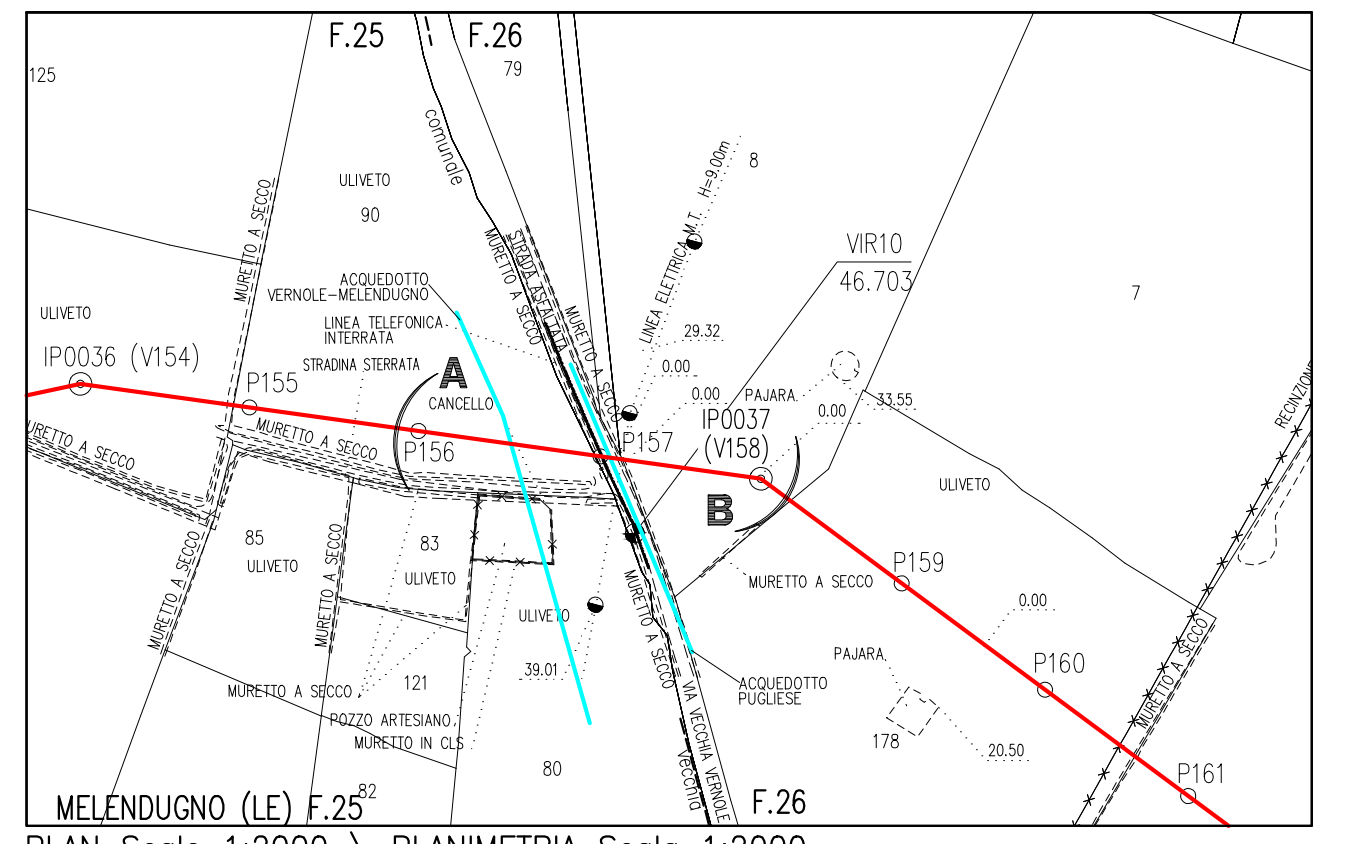


PLAN/PLANIMETRIA 1:200 (Size A3; 1:400)  
SECTION A-B/SEZIONE A-B 1:100 (Size A3; 1:200)  
HORIZONTAL & VERTICAL SCALE \ SCALA ORIZZONTALE E VERTICALE  
NOTE: SCALE WILL BE REDUCED BY HALF, IF CROSSING IS PRINTED ON A3 SIZE  
NOTA: LA SCALA SI RIDUCE DELLA META' SE L'ATTRAVERSAMENTO E' STAMPATO NEL FORMATO A3

REFERENCE DRAWINGS	N°
TYPICAL WORKING STRIP FOR 36" PIPELINE	IP00-C5522-100-F-DFT-0001-01
TYPICAL TRENCH FOR 36" PIPELINE	IP00-C5522-100-F-DFT-0002-01
TYPICAL PIPELINE ROAD MARKER	IP00-C5522-100-F-DFT-0007-01
TYPICAL FOR FIELD COLD BEND	IP00-C5522-100-F-DFT-0009-01
TYPICAL CONCRETE SLAB	IP00-C5522-100-F-DFT-0010-01
TYPICAL CROSSING OF CLASS "E" ROADS	IP00-C5522-100-F-DFT-0011-01
TYPICAL CROSSING OF POWER OR TELECOMMUNICATION CABLES WITHOUT CABLE CONDUIT	IP00-C5522-100-F-DFT-0015-01
TYPICAL CROSSING OF METAL WATERPIPE	IP00-C5522-100-F-DFT-0018-01
36" PIPELINE ROUTE MAP	IP00-C5522-100-F-DRR-0001-01
ALIGNMENT SHEET FROM KP 7+500 TO KP 7+900 - SHEET N.17 OF 18	IP00-C5522-100-F-DFA-0017-01
CADASTRAL MAP	IP00-C5522-000-F-DFC-0001-01



GEODETIC REFERENCE SYSTEM			
Datum: WGS84	Spheroid: WGS84		
Projection: UTM (Zone 34)	Central meridian: 21°E		
Vertical Ref. Level: LAT			



PLAN Scale 1:2000 \ PLANIMETRIA Scala 1:2000  
Melendugno municipality (LE) F.25, F.26 \ Comune di Melendugno (LE) F.25, F.26

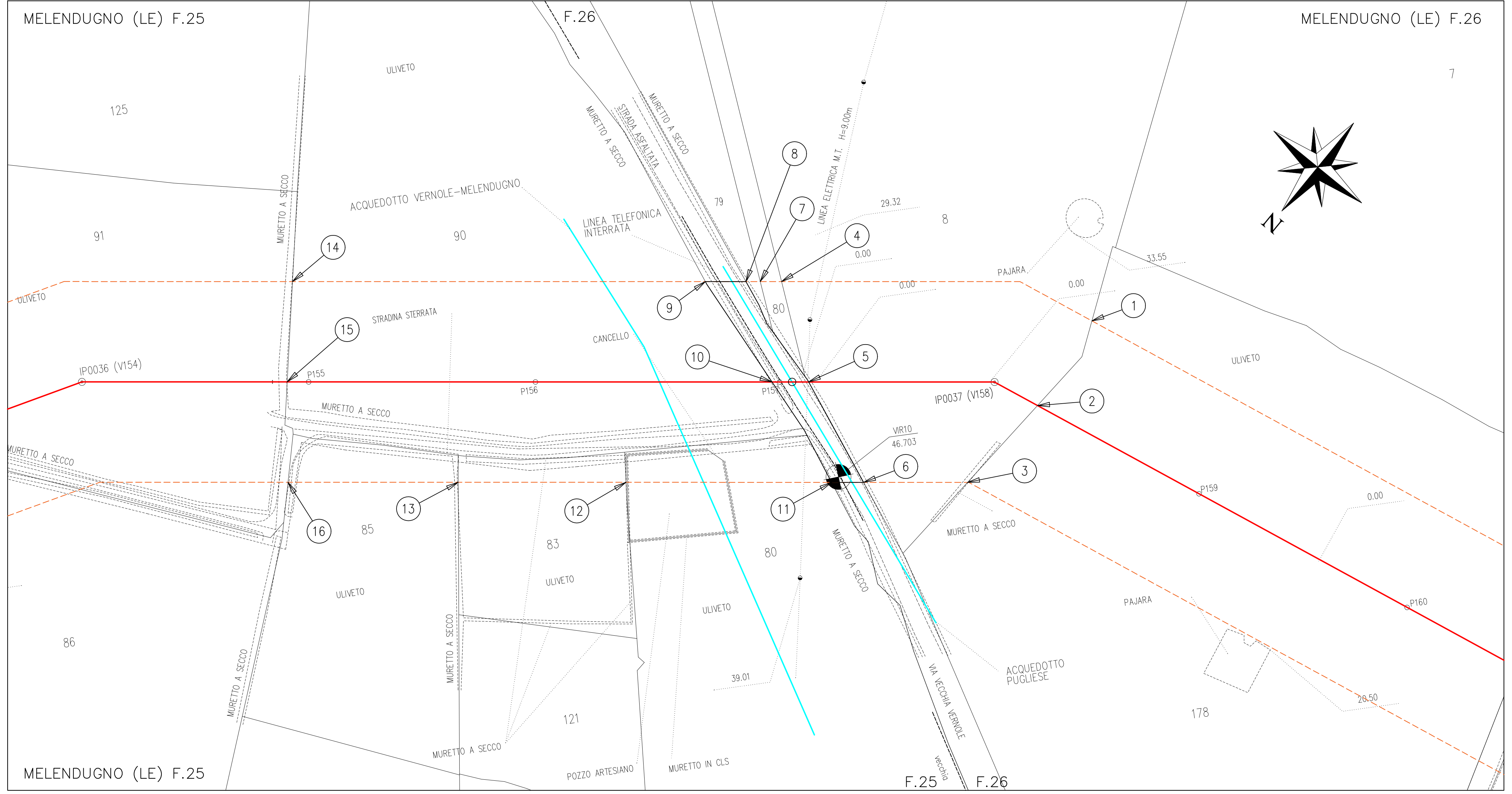
BILL OF QUANTITIES FOR INDUCTION \ BENDABELLA MATERIALI PER LE CURVE PREFABBRICATE							
S.N.	DN	D.F./G.U.	GRADE/GRADO	W.T./SP.	ANGLE ANGOLO	RADIUS RAGGIO	PROGRESSIVE DISTANCE PROGRESSIVA ORIZZONTALE
1	36"	0,57	X70/L485	29,0 mm	30°	5DN	7617,08
TOTAL NUMBER \ NUMERO TOTALE =							N.1 x 30°



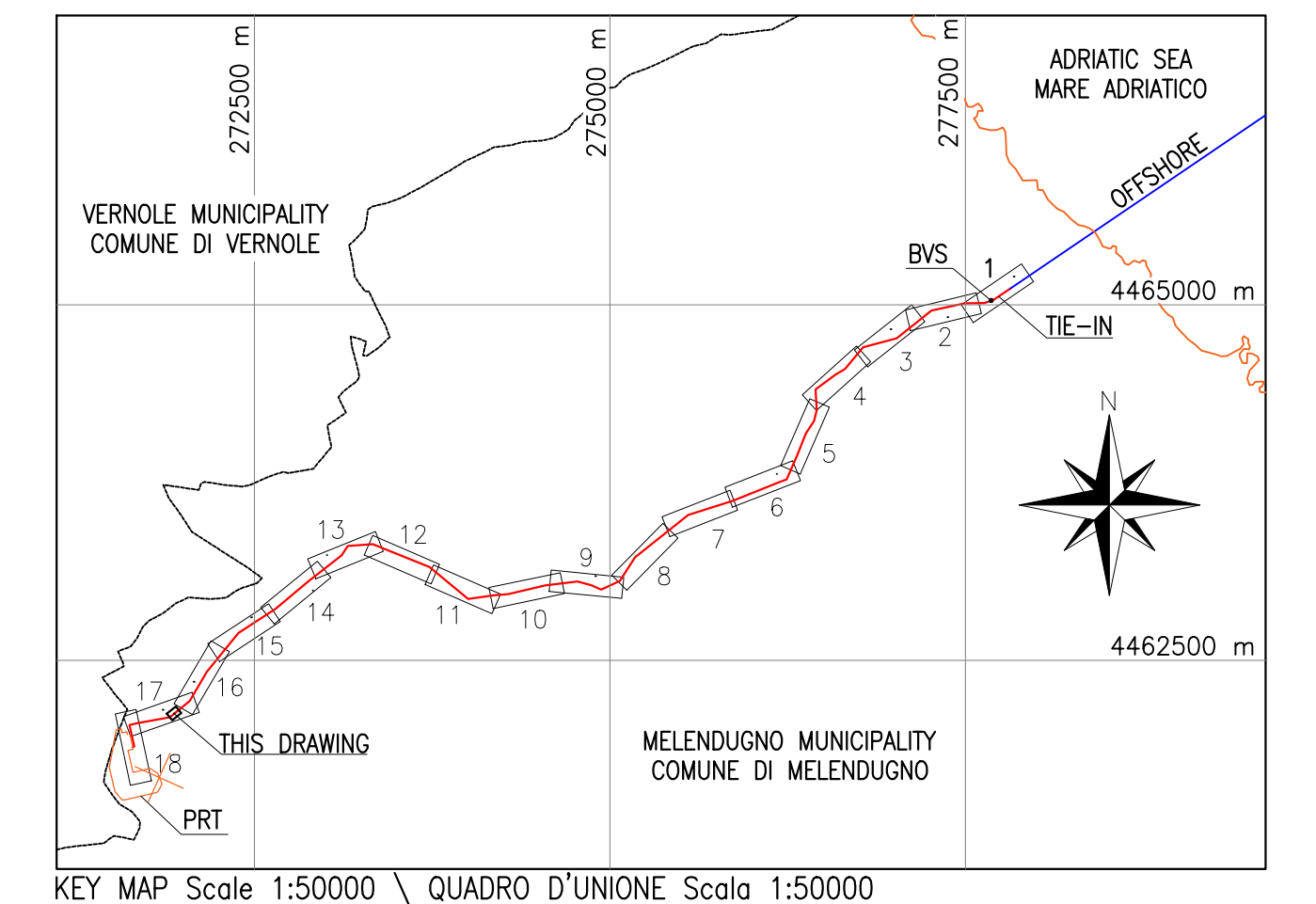
SUPPLIER DOCUMENT NUMBER <b>P15IT03157-PPL-DW-000-043</b>	REV. NO. <b>4</b>	<b>MAX STREICHER</b> S.p.A.	<b>Enerco</b>
--	----------------------	--------------------------------	---------------

REV.	DESCRIPTION	PREP	VFY	APPR	DATE
4	RE-ISSUED FOR CONSTRUCTION			IFC	28/06/17
3	RE-ISSUED FOR CONSTRUCTION			IFC	09/01/17
2	RE-ISSUED FOR CONSTRUCTION			IFC	15/12/16
1	RE-ISSUED FOR CONSTRUCTION			IFC	07/12/16
0	ISSUED FOR CONSTRUCTION			IFC	20/10/16
A	ISSUED FOR REVIEW			IFR	30/09/16

PROJECT TITLE <b>Trans Adriatic Pipeline Project/Onshore Pipeline Italy (OPLI)</b>		TAG NUMBERS —	
DRAWING TITLE <b>CROSSING OF "ACQUEDOTTO PUGLIESE" WATERLINE DN 125 KP 7+550, WATERLINE DN 200 VERNOLE-MELENUGNO AND ROAD "VIA VECCHIA VERNOLE" KP 7+574</b>		PAGE 2 of 3	
DRAWING NO. <b>IPL00-C5522-100-F-DFB-0005-01</b>		REVISION NO. <b>4</b>	

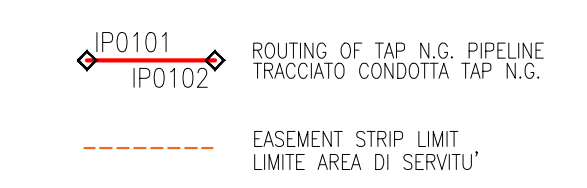


REFERENCE DRAWINGS	N°
TYPICAL WORKING STRIP FOR 36" PIPELINE	IPL00-C5522-100-F-DFB-0001-01
TYPICAL TRENCH FOR 36" PIPELINE	IPL00-C5522-100-F-DFB-0002-01
TYPICAL PIPELINE ROAD MARKER	IPL00-C5522-100-F-DFB-0007-01
TYPICAL FOR FIELD COLD BEND	IPL00-C5522-100-F-DFB-0010-01
TYPICAL CONCRETE SLAB	IPL00-C5522-100-F-DFB-0009-01
TYPICAL CROSSING OF CLASS "III" ROADS	IPL00-C5522-100-F-DFB-0011-01
TYPICAL CROSSING OF POWER OR TELECOMMUNICATION CABLES WITHOUT CABLE CONDUIT	IPL00-C5522-100-F-DFB-0015-01
TYPICAL CROSSING OF METAL WATERPIPE	IPL00-C5522-100-F-DFB-0018-01
TYPICAL CROSSING OF SEWER AND COVERED CANALS	IPL00-C5522-100-F-DFB-0019-01
36" PIPELINE ROUTE MAP	IPL00-C5522-100-F-DFB-0001-01
ALIGNMENT SHEET FROM KP 7+500 TO KP 7+900 - SHEET N.17 OF 18	IPL00-C5522-100-F-DFB-0017-01
CADASTRAL MAP	IPL00-C5522-000-F-DFK-0001-01



KEY MAP Scale 1:50000 \ QUADRO D'UNIONE Scala 1:50000

GEODETIC REFERENCE SYSTEM			
Datum:	WGS84	Spheroid:	WGS84
Projection:	UTM (Zone 34)	Central meridian:	21°E
Vertical Ref. Level:	LAT		



Intersezioni asse tracciato / mappali				
	id	Est (m)	Nord (m)	Lunghezza percorrenza (m)
Fig. 26 Mapp 8	2	271895.27	4462097.93	46.8
	5	271933.54	4462123.16	
Fig. 25 Mapp 90	10	271939.18	4462127.77	96.57
	15	272013.93	4462188.91	

Servitù	
	Area occupata (m2)
Fig. 26 Mapp 8	1807.70
Fig. 26 Mapp 80	61.32
Fig. 26 Mapp 79	14.6
Fig. 25 Mapp 90	3119.32
Fig. 25 Mapp 80	302.79
Fig. 25 Mapp 83	167.12
Fig. 25 Mapp 85	249.13

Intersezioni Servitù / mappali				
	id	Est (m)	Nord (m)	
Fig. 26 Mapp 178 \ Fig. 26 Mapp 8	1	271897.56	4462078.01	
Fig. 26 Mapp 178 \ Fig. 26 Mapp 8	3	271896.37	4462118.59	
Fig. 26 Mapp 8 \ Fig. 26 Mapp 80	4	271950.37	4462111.09	
Fig. 26 Mapp 8	6	271912.39	4462131.70	
Fig. 26 Mapp 80 \ Fig. 26 Mapp 79	7	271953.66	4462113.78	
Fig. 26 Mapp 79	8	271955.86	4462115.57	
Fig. 25 Mapp 90	9	271962.13	4462120.70	
Fig. 25 Mapp 80	11	271917.33	4462135.73	
Fig. 25 Mapp 80 \ Fig. 25 Mapp 83	12	271949.03	4462161.66	
Fig. 25 Mapp 83 \ Fig. 25 Mapp 85	13	271974.90	4462182.82	
Fig. 25 Mapp 90 \ Fig. 25 Mapp 91	14	272025.78	4462172.75	
Fig. 25 Mapp 85 \ Fig. 25 Mapp 91	16	272001.14	4462204.28	



SUPPLIER DOCUMENT NUMBER	REV. NO.	MAX STREICHER S.p.A.	Enereco
P151T03157-PPL-DW-000-043	4		

REV.	DESCRIPTION	PREP	VFY	APPR	DATE
4	RE-ISSUED FOR CONSTRUCTION	IFC			28/06/17
3	RE-ISSUED FOR CONSTRUCTION	IFC			09/01/17
2	RE-ISSUED FOR CONSTRUCTION	IFC			15/12/16
1	RE-ISSUED FOR CONSTRUCTION	IFC			07/12/16
0	ISSUED FOR CONSTRUCTION	IFC			20/10/16
A	ISSUED FOR REVIEW	IFR			30/09/16

PROJECT TITLE  
Trans Adriatic Pipeline Project/Onshore Pipeline Italy (OPLI)

DRAWING TITLE  
CROSSING OF "ACQUEDOTTO PUGLIESE" WATERLINE DN 125 KP 7+550, WATERLINE DN 200 VERNOLE-MELENDUGNO AND ROAD "VIA VECCHIA VERNOLE" KP 7+574

ATTRAVERSAMENTO DELL'ACQUEDOTTO PUGLIESE DN 125 KP 7+550, ACQUEDOTTO PUGLIESE DN 200 VERNOLE-MELENDUGNO E DELLA STRADA VIA VECCHIA VERNOLE KP 7+574

PAGE 3 of 3

FORMAT	SCALE	FACILITY CODE	SYSTEM NO.	RD CODE	REVISION NO.
A1	1:500	-	-		4

DRAWING NO.  
IPL00-C5522-100-F-DFB-0005-01