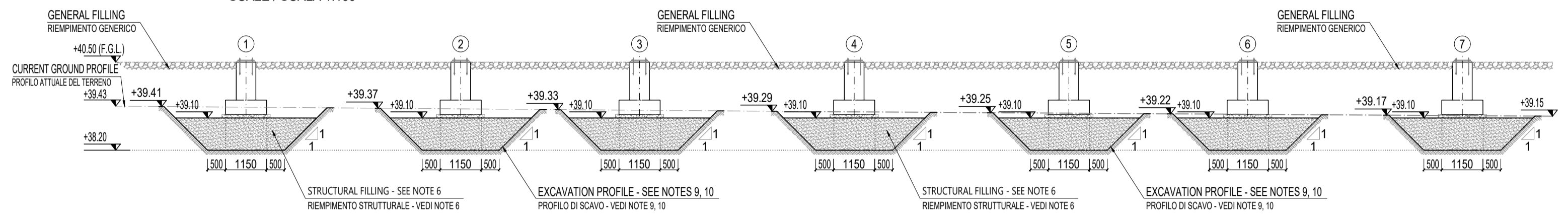
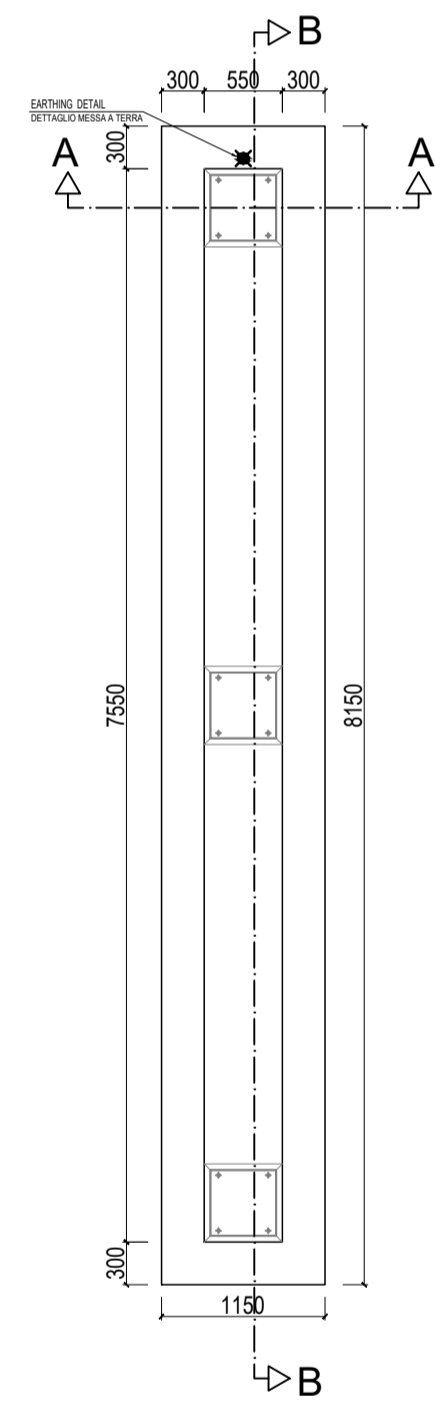


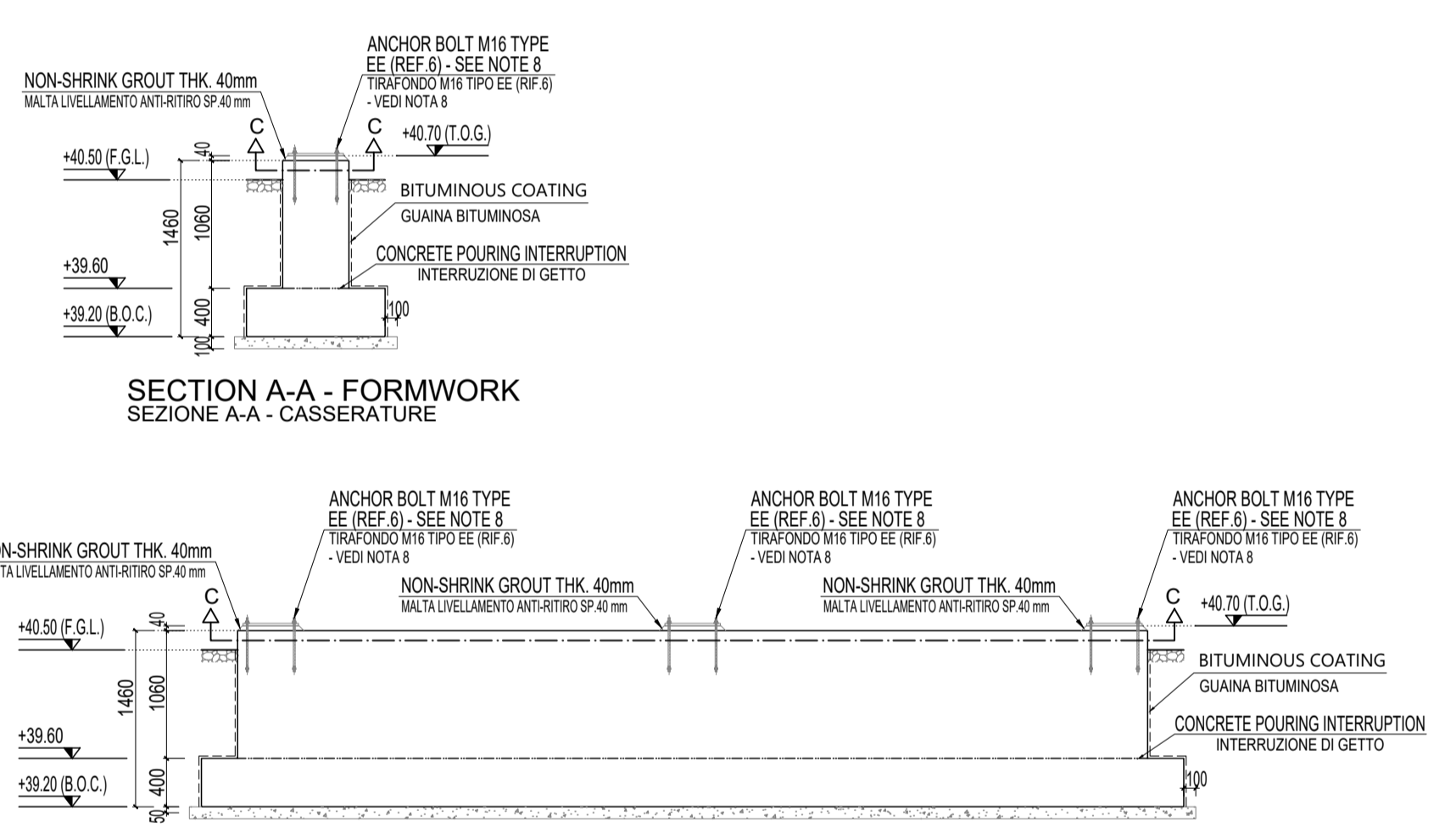
KEYPLAN VIEW +40.70
PIANTA CHIAVE +40.70
SCALE / SCALA 1:100



SECTION Z-Z
SEZIONE Z-Z
SCALE / SCALA 1:100

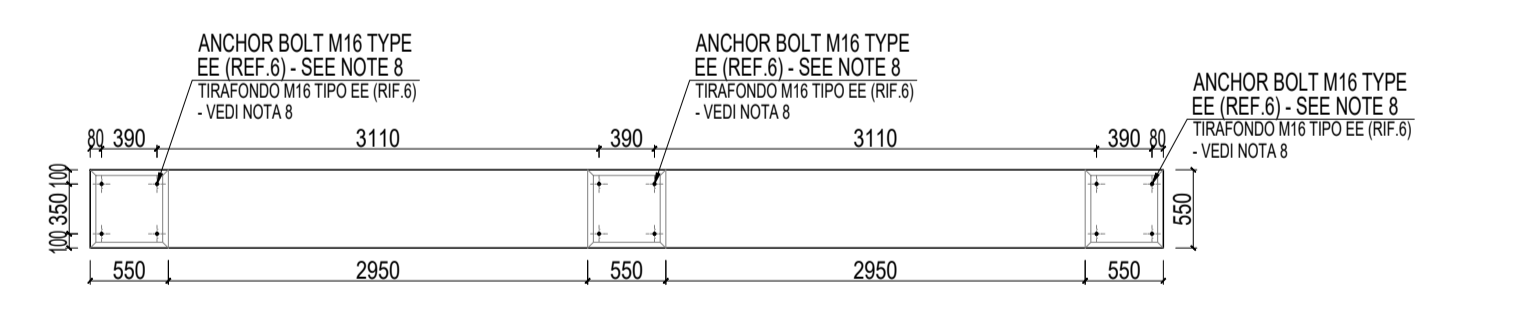


TOP VIEW +40.70 - FORMWORK
PIANTA +40.70 - CASSERATURE

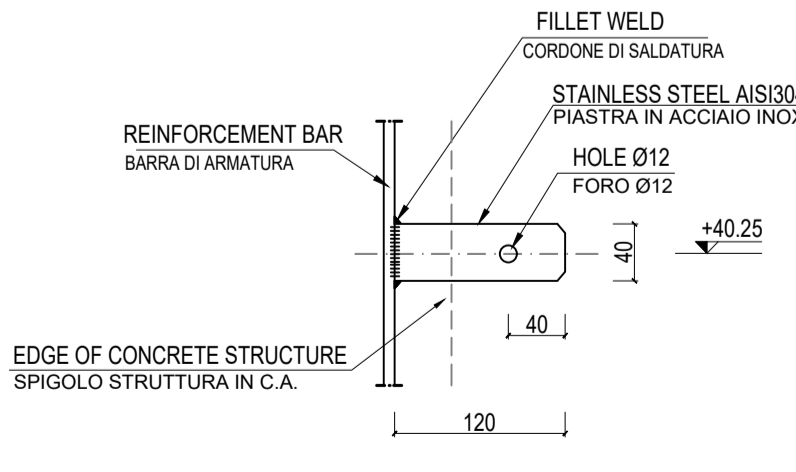


SECTION A-A - FORMWORK
SEZIONE A-A - CASSERATURE

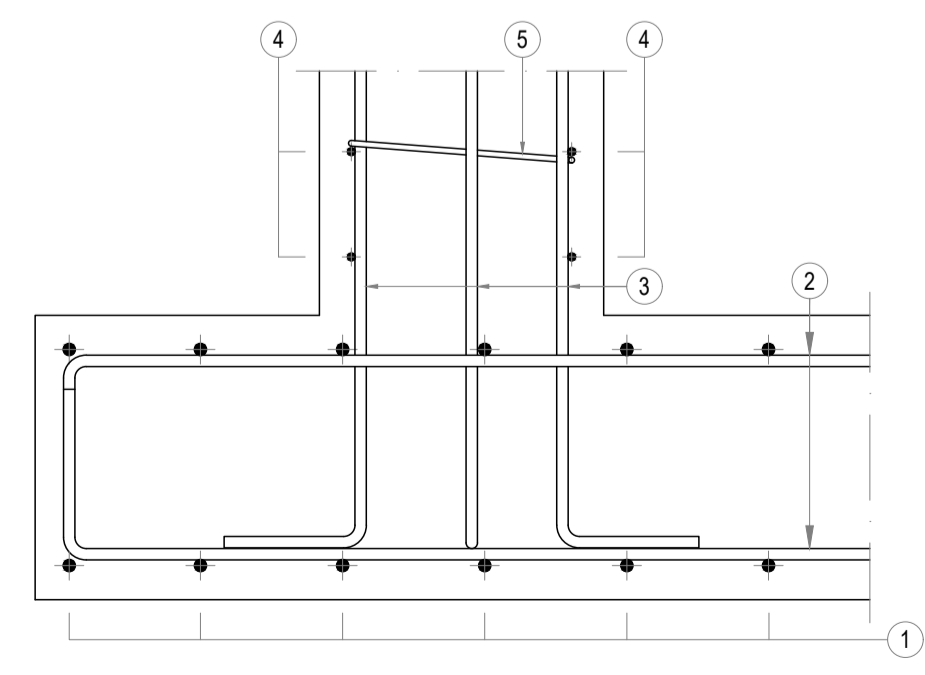
SECTION B-B - FORMWORK
SEZIONE B-B - CASSERATURE



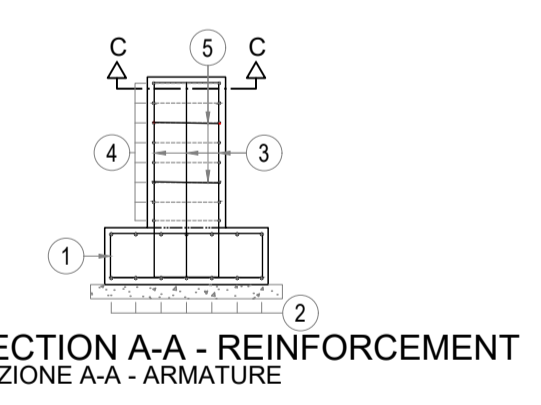
SECTION C-C - FORMWORK
SEZIONE C-C - CASSERATURE



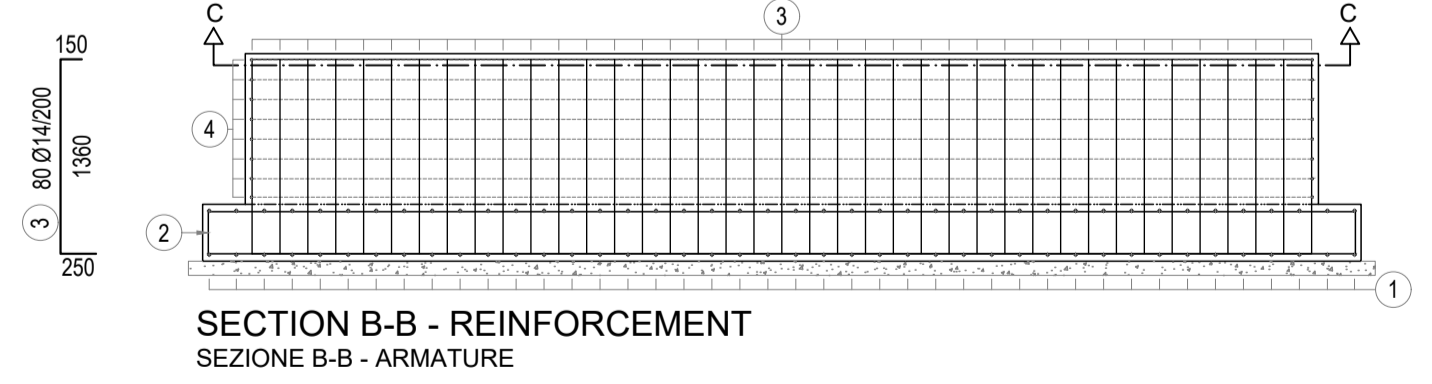
EARTHING DETAIL
DETTAGLIO MESSA A TERRA



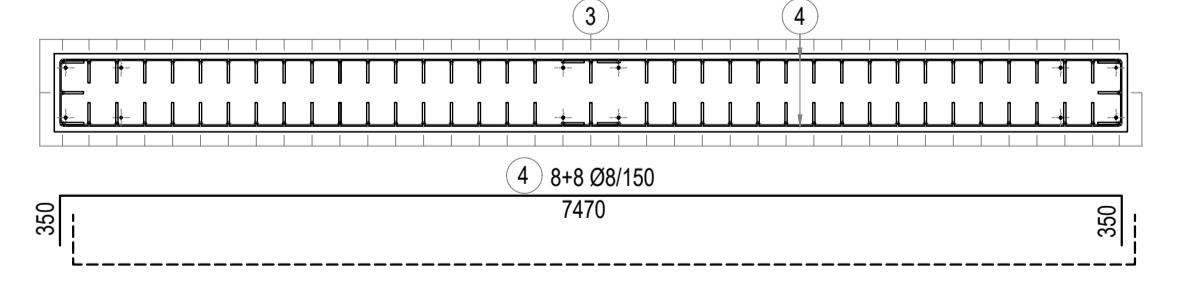
TYPICAL DETAIL FOR REINFORCEMENT INTERSECTION
DETTAGLIO TIPICO INTERSEZIONE TRA ARMATURE
SCALE/SCALA 1:20



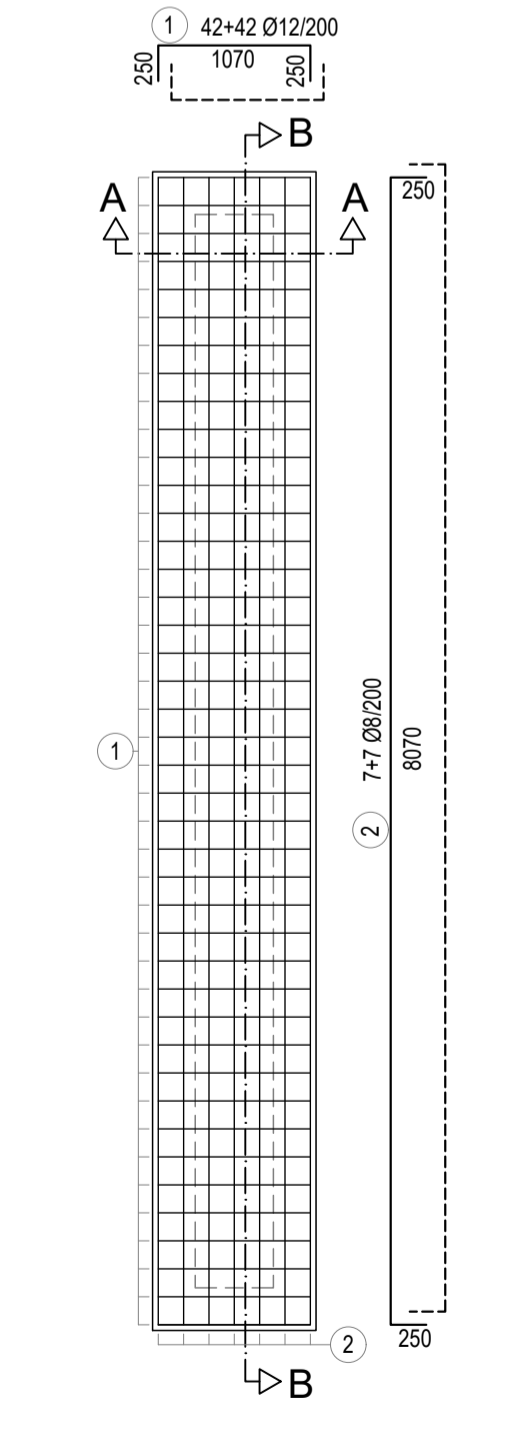
SECTION A-A - REINFORCEMENT
SEZIONE A-A - ARMATURE



SECTION B-B - REINFORCEMENT
SEZIONE B-B - ARMATURE



SECTION C-C - REINFORCEMENT
SEZIONE C-C - ARMATURE



TOP VIEW +39.20 - REINFORCEMENT
PIANTA +40.70 - ARMATURE

BILL OF MATERIALS FOR CIVIL WORKS COMPUTO DEI MATERIALI PER OPERE CIVILI		
	QUANTITY FOR 1 ITEM QUANTITA' PER 1 ELEMENTO	QUANTITY FOR 7 ITEMS QUANTITA' PER 7 ELEMENTI
STRUCTURAL CONCRETE CALCESTRUZZO STRUTTURALE	8.15 m³	57.05 m³
LEAN CONCRETE MAGRONE	1.04 m³	7.28 m³
BITUMINOUS COATING RIVESTIMENTO BITUMINOSO	27.23 m²	190.61 m²
FORMWORK CASSERATURA	24.61 m²	172.27 m²
REINFORCEMENT ARMATURA	384.63 kg	2692.41 kg
GROUTING MORTAR MALTA DI LIVELLAMENTO	0.03 m³	0.21 m³
ANCHOR BOLTS M16 TYPE EE BULLONI DI ANCORAGGIO M16 TIPO EE	n. 12 9.24 kg	n. 84 64.68 kg
EARTHING PLATE PIASTRA PER MESSA A TERRA	n. 1 pc	n. 7 pcs

NOTES / NOTE
- 4 Ø8mm DISTANCE HOLDERS WILL BE PROVIDED TO GUARANTEE THE REQUIRED BAR COVERS AND DISTANCE BETWEEN REBARS.
DEVONO ESSERE FORNITI 4 DISTANZIATORI Ø8mm PER GARANTIRE IL COPRIFERRO RICHIESTO E LA DISTANZA TRA I FERRI DI ARMATURA.

REFERENCE DOCUMENTS / DOCUMENTI DI RIFERIMENTO

IPR01-C5521-300-Q-TSD-0001	REF 1: Design Specification for Concrete Works
IPR01-C5521-000-Q-DQA-0001	REF 2: General Plot Plan
IPR01-C5521-961-Q-TCE-0002	REF 3: Foundation for Metering Station - Structural Calculation Report
IPR01-C5521-961-Q-DQF-0004	REF 4: Foundation for Metering Station - Bar Bending List
IPR01-C5521-4005-330-A-DEB-0001 Rev A	REF 5: IPR01 - Metering Analyzer - General Arrangement Drawing
IPR01-C5521-000-Q-DQF-0001	REF 6: Standard for Anchor Bolts
IPR01-C5521-900-Q-TSD-0001	REF 7: Specification for Earth Moving Works

LEGEND / LEGENDA

B.O.C. = BOTTOM OF CONCRETE / FONDO DEL CALCESTRUZZO	T.O.C. = TOP OF CONCRETE / ESTRADOSSO DEL CALCESTRUZZO
F.G.L. = FINISHED GROUND LEVEL / LIVELLO DEL TERRENO FINITO	T.O.G. = TOP OF GROUT / ESTRADOSSO MALTA DI LIVELLAMENTO
⊖ = HOLD / DA DEFINIRE	T.O.P. = TOP OF PLATE / ESTRADOSSO DELLA PIASTRA
--- = CONCRETE POURING INTERRUPTION / INTERRUZIONI DI GETTO	

REMARKS / NOTE

- ALL DIMENSIONS ARE IN mm, UNLESS OTHERWISE INDICATED. / TUTTE LE QUOTE SONO IN mm, SALVO DIVERSA INDICAZIONE.
- COORDINATES ARE REFERRED TO LOCAL REFERENCE SYSTEM AND ARE EXPRESSED IN METER. H= 2000, R= 2000 CORRESPOND TO EAST 271472.209, NORTH 4461454.066 OF UTM SYSTEM ZONE 34. / LE COORDINATE DELL'AREA SONO RIFERITE AL SISTEMA DI RIFERIMENTO LOCALE E SONO ESPRESSE IN METRI. H= 2000, R= 2000 CORRISPONDE A EST 271472.209, NORD 4461454.066 DEL SISTEMA UTM ZONA 34.
- ALL ELEVATIONS ARE IN m. F.G.L. CORRESPONDS TO +40.50 m a.s.l. / TUTTE LE ELEVAZIONI SONO IN m. F.G.L. CORRISPONDE A +40.50 m s.l.m.
- ALL CONCRETE SURFACES IN CONTACT WITH SOIL BELOW GROUND LEVEL WILL BE PROTECTED BY A BITUMEN-BASED WATERPROOF COATING TYPE SIKAGOL-2 OR SIMILAR. / TUTTE LE SUPERFICI IN CALCESTRUZZO IN CONTATTO CON IL TERRENO AL DI SOTTO DEL TERRENO SARANNO PROTETTE DA UN RIVESTIMENTO IMPERMEABILE A BASE DI BITUME TIPO SIKAGOL-2 O SIMILARE.
- ALL THE EXPOSED EDGES WILL BE CHAMFERED AS SHOWN BELOW / TUTTI I BORDI ESPOSTI SARANNO SMUSSATI COME INDICATO SOTTO:

CONCRETE / CALCESTRUZZO

REFERENCE STANDARD / NORMATIVA DI RIFERIMENTO	NTC 14-01-2008, EN 206-1
STRUCTURAL CONCRETE GRADE / CLASSE DEL CLS STRUTTURALE	C 28/35
LEAN CONCRETE GRADE / CLASSE DEL MAGRONE	C 12/15
CEMENT TYPE / TIPO DI CEMENTO	CEM IV/B 32.5 or CEM IV-B/M 42.5
MINIMUM CEMENT CONTENT (STRUCTURAL CONCRETE)	350 kg/m³
MINIMUM CEMENT CONTENT (LEAN CONCRETE)	270 kg/m³
EXPOSURE CLASS / CLASSE DI ESPOSIZIONE	XC2 (FOR FOUNDATIONS) XC3 (FOR RISING STRUCTURES)
PROPOSED SLUMP CLASS / CLASSE DI SLUMP PROPOSTA	S3 (100 - 150 mm) FOR HORIZONTAL STRUCTURES S4 (160 - 200 mm) FOR VERTICAL STRUCTURES
WATER SHALL COMPLY WITH REQUIREMENTS OF EN 1008 / L'ACQUA DEVE SODDISFARE LE RICHIESTE DELLA EN 1008	

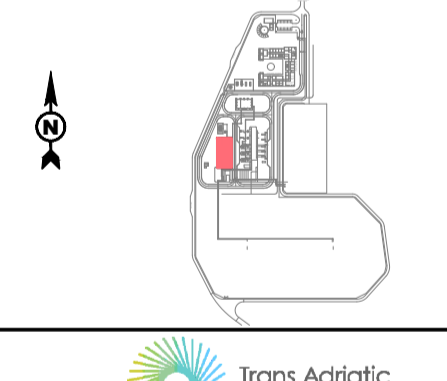
REINFORCEMENT STEEL / BARRE DI ARMATURA

REFERENCE STANDARD / NORMATIVA DI RIFERIMENTO	NTC 14-01-2008, ENV 1992-1-1 (EC2)
STEEL BARS / BARRE DI ACCIAIO	B450C

MINIMUM BAR COVER / COPRIFERRO MINIMO

FOR ALL SURFACES / PER OGNI SUPERFICIE	40 mm
----------------------------------------	-------

KEY PLAN / PIANTA CHIAVE



CONTRACTOR DOCUMENT NUMBER N. DOCUMENTO APPALTATORE	7900-CH-000110
REVISION NO. REVISIONE N.	A



A	ISSUED FOR REVIEW / EMISSIONE PER REVISIONE	PMB	LEVANTINI/PIROMALLI	28-08-2017	
REV.	REMARK / DESCRIPTION NOTA / DESCRIZIONE	PREP ELA.	VFY VER.	APR APP.	DATE DATA

PROJECT TITLE
TITOLO PROGETTO
TRANS ADRIATIC PIPELINE
GASDOTTO TRANS ADRIATICO

DRAWING TITLE
TITOLO DISEGNO
FOUNDATION FOR GAS METERING STATION
FORMWORK & REINFORCEMENT
FONDAZIONI PER STAZIONE DI MISURA - CASSERI ED ARMATURE

Format	Scale	FACILITY CODE COD. IMPIANTO	SYSTEM NO. SISTEMA N.	SHEET FOGLIO	RD CODE CODICE RD	REVISION NO. REVISIONE N.
A1	1:50	IPR01	961	1 of 1	-	A

IPR01-C5521-961-Q-DQF-0003-01