

**Tabelle planimetriche AV-AC**

TRACK_A V PLAN_A.4				TRACK_A V PLAN_A.5			
X	1695056.685	Az	57.285224	X	1695274.022	Az	55.193381
Y	5044494.675	Az	55.193381	Y	5044494.675	Az	57.285224
R	4915.000	f	0.000000	R	4915.000	f	0.000000
S	86.267	V	160	S	86.267	V	160
Alf	1.376321	R	45.000	Alf	1.376321	R	45.000
Alf	2.091945	R	0.021	Alf	2.091945	R	0.021
T	43.485	H	4.5	T	43.485	H	4.5

**Tabelle planimetriche LS**

TRACK_B V PLAN_B.3				TRACK_B V PLAN_B.4			
X	1695055.391	Az	57.184419	X	1695267.040	Az	55.193380
Y	5044495.005	Az	55.193380	Y	5044495.005	Az	57.285220
R	4915.000	f	0.000000	R	4915.000	f	0.000000
S	86.267	V	160	S	86.267	V	160
Alf	1.376321	R	45.000	Alf	1.376321	R	45.000
Alf	2.091945	R	0.021	Alf	2.091945	R	0.021
T	40.114	H	0.0	T	42.788	H	0.0

**Tabelle planimetriche Mercè**

TRACK_C V PLAN_C.2				TRACK_C V PLAN_C.3			
X	1695175.395	Az	57.285239	X	169514.737	Az	57.875644
Y	5044578.057	Az	57.875644	Y	5044608.697	Az	55.427217
R	800.000	f	0.000000	R	800.000	f	0.000000
S	7.419	V	0	S	35.450	V	0
Alf	0.590425	R	0.000	Alf	2.448427	R	0.000
Alf	0.590425	R	0.000	Alf	2.448427	R	0.000
T	3.710	H	0.0	T	19.232	H	0.0

**Tabelle altimetriche AV-AC**

V ALT_A.5			
Pr	46190.987	Pr	46190.987
Qp	36.500	Qp	36.500
Pu	-0.00000	Pu	-0.00000
Rv	10000.000	Rv	10000.000
f	11.199	f	11.199
Pr	46190.987	Pr	46190.987
Pr	46190.987	Pr	46190.987

**Tabelle altimetriche LS**

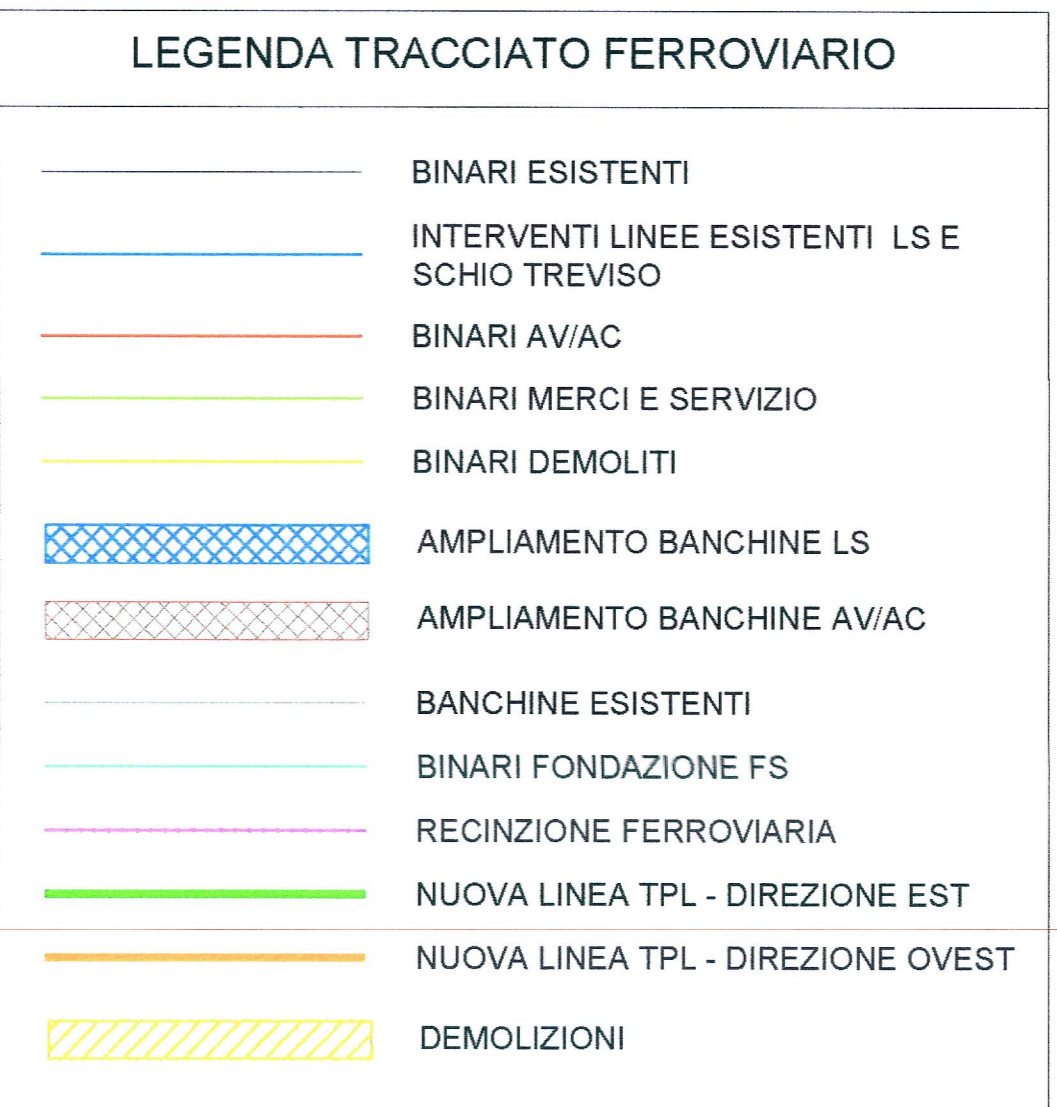
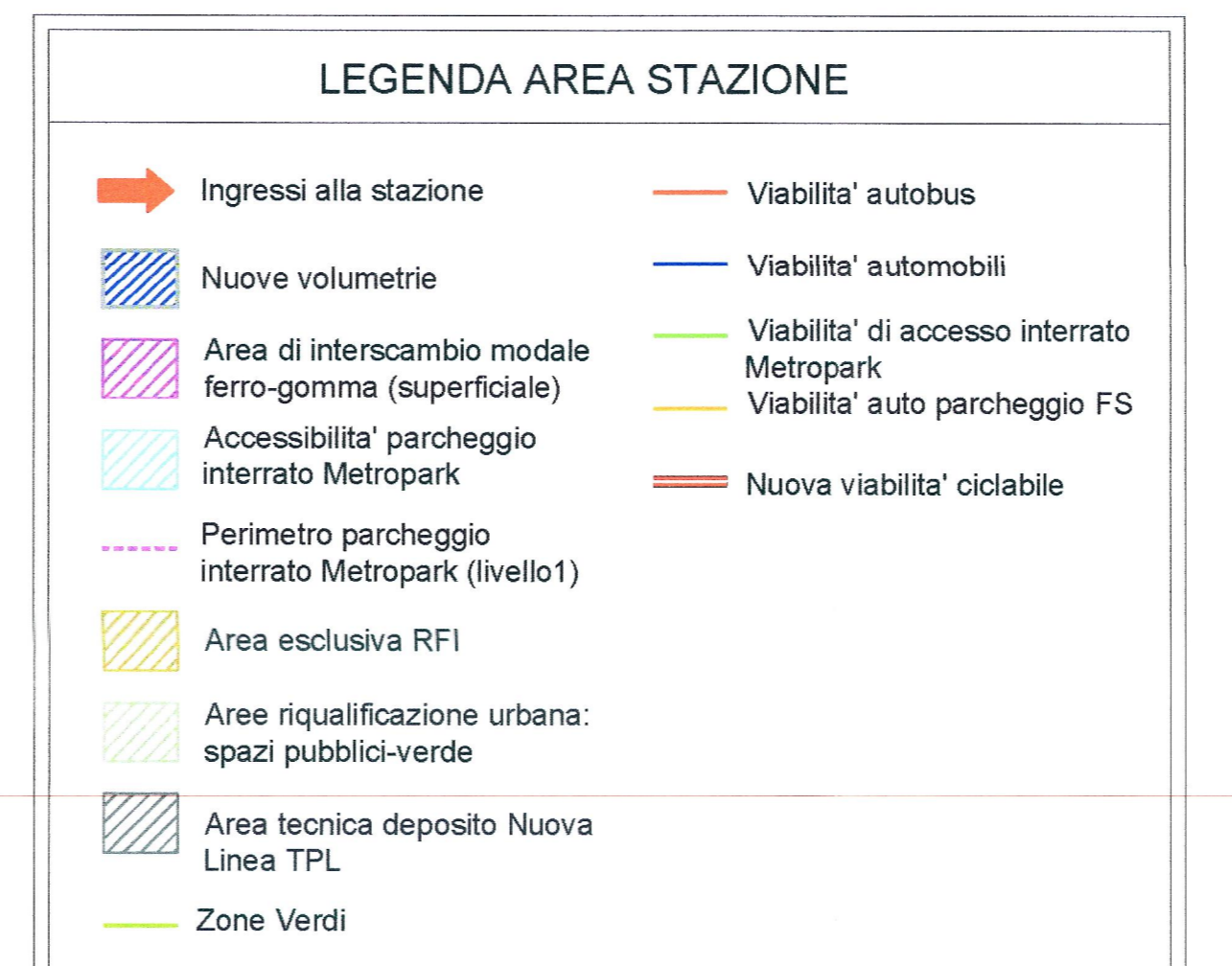
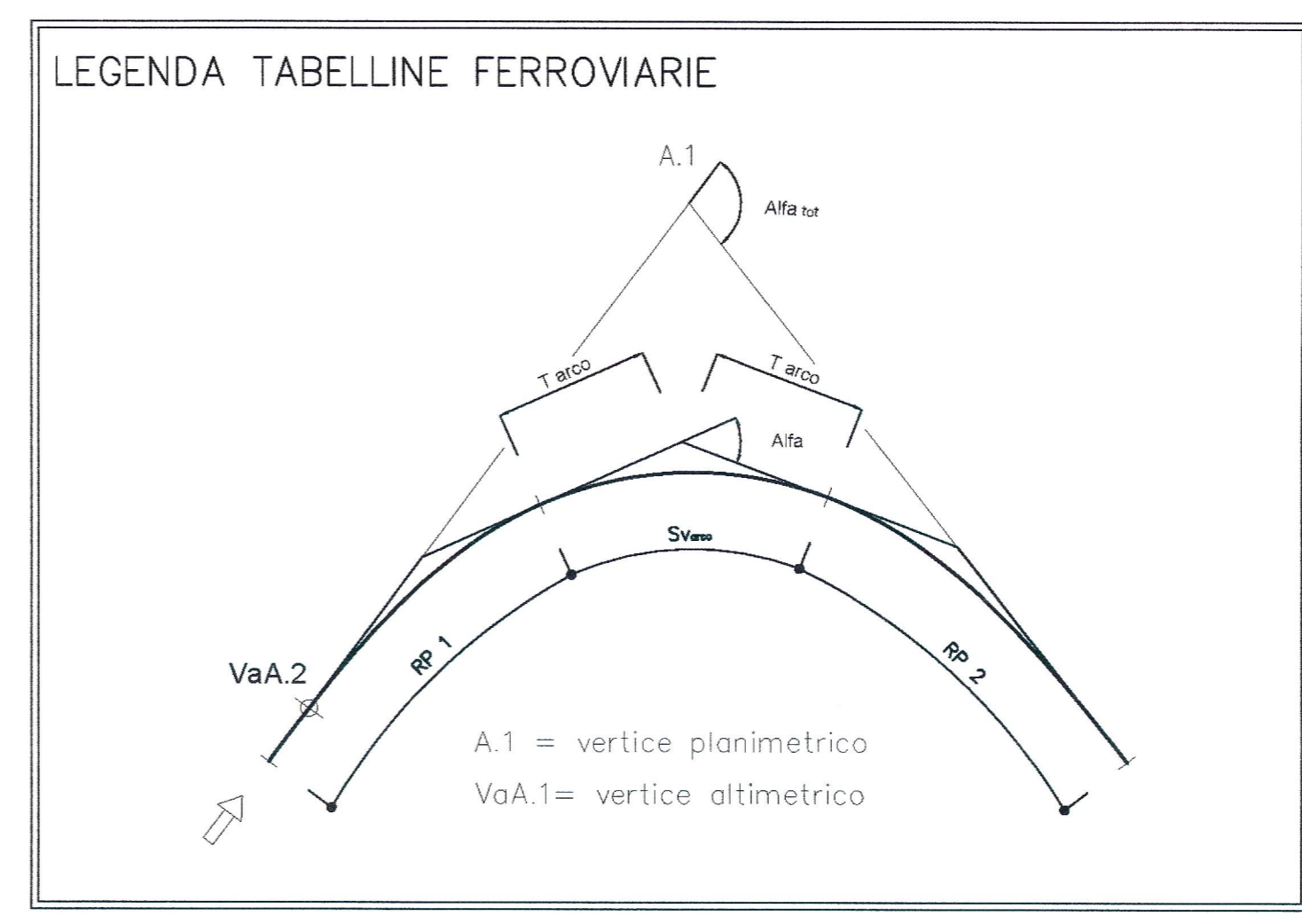
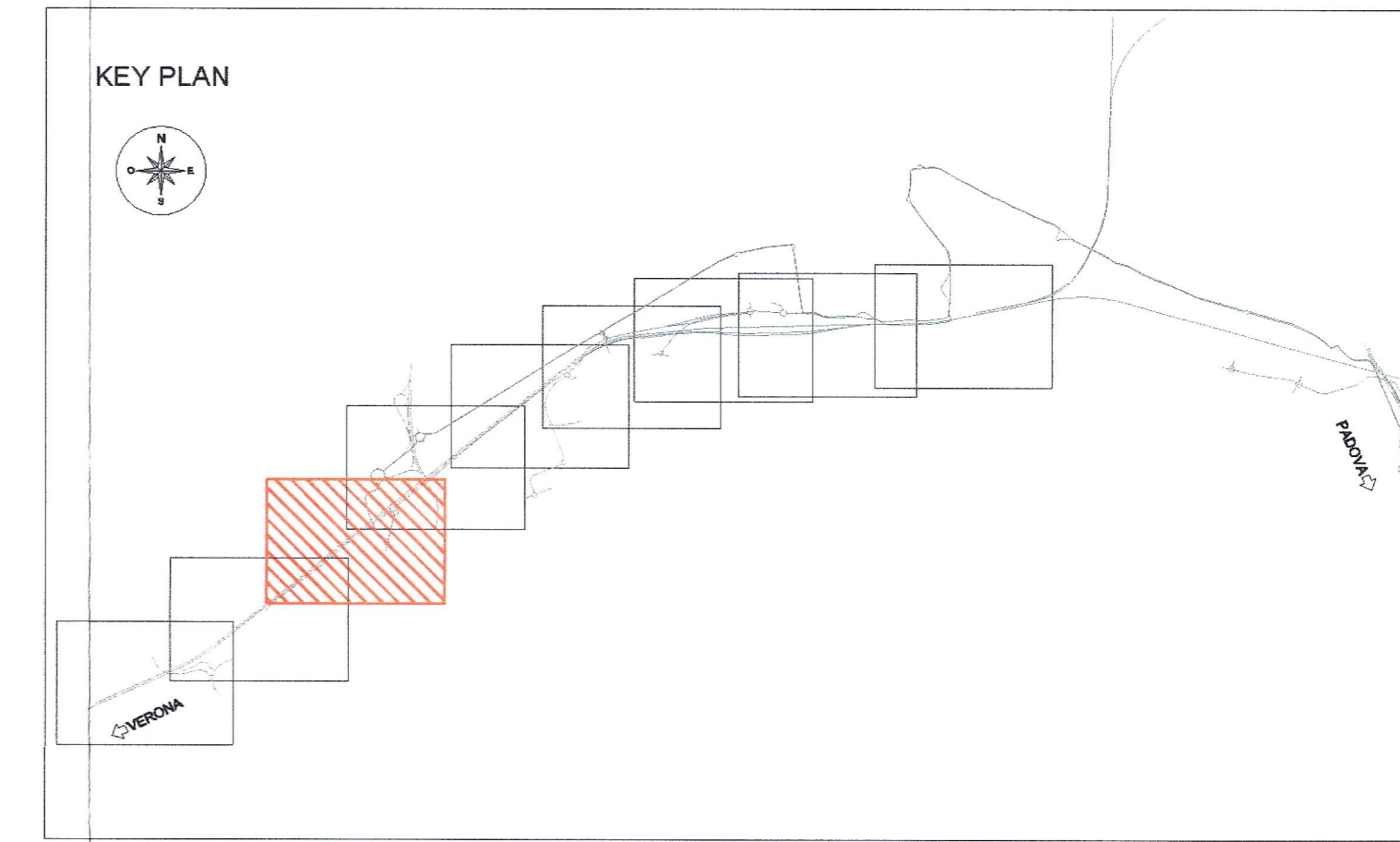
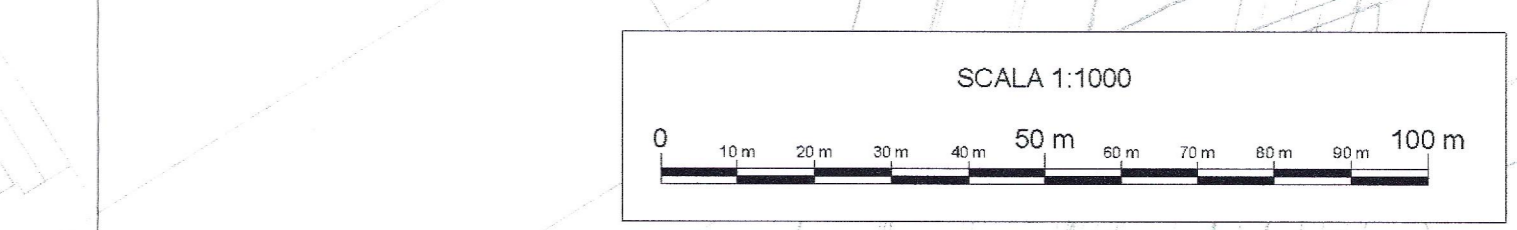
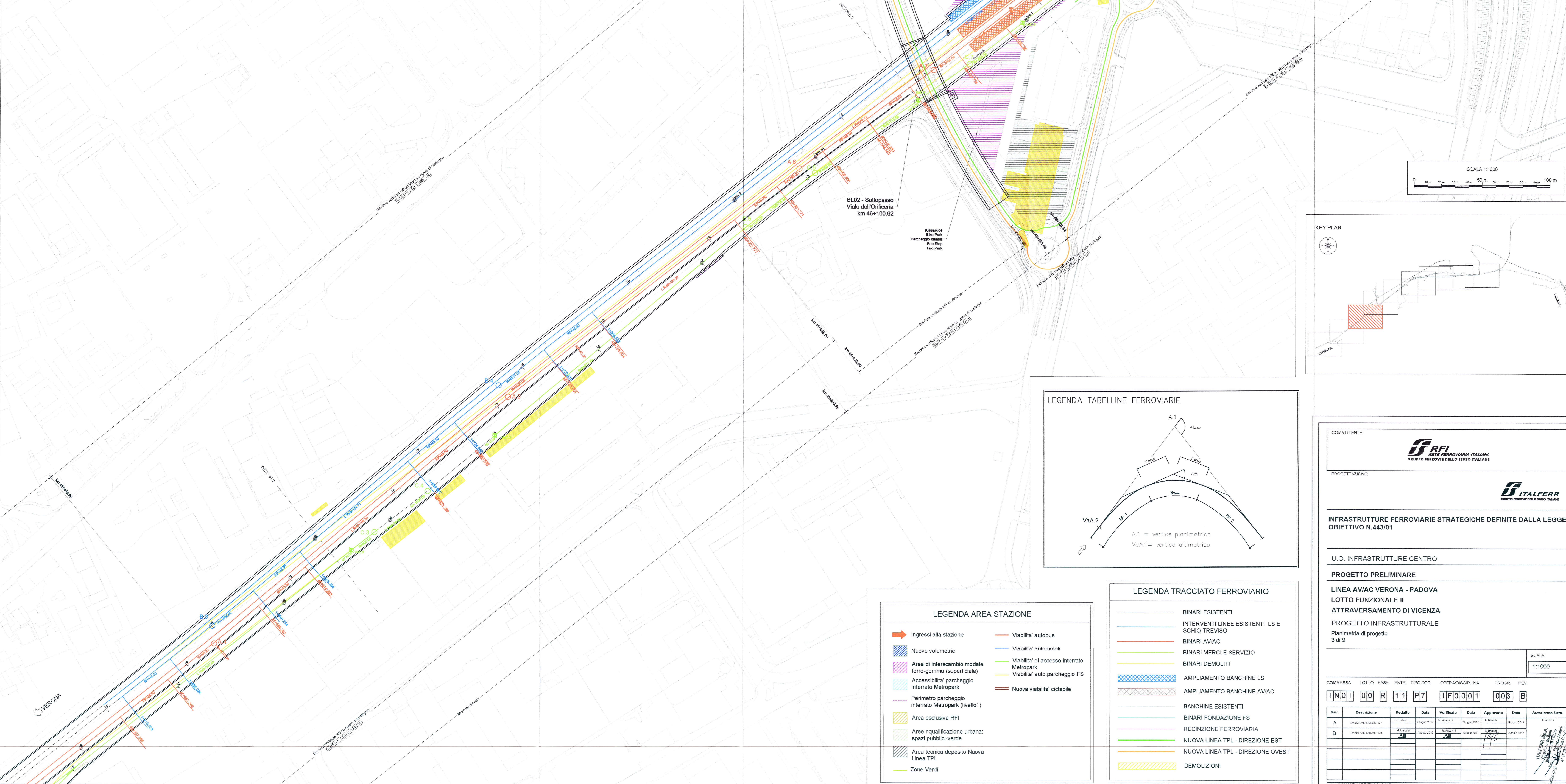
V ALT_B.6			
Pr	2248.130	Pr	2248.130
Qp	36.500	Qp	36.500
Pu	-0.00000	Pu	-0.00000
Rv	10000.000	Rv	10000.000
f	11.568	f	11.568
Pr	2248.130	Pr	2248.130
Pr	2248.130	Pr	2248.130

**Tabelle altimetriche Mercè**

V ALT_C.2		V ALT_C.3		V ALT_C.4		V ALT_C.5	
Pr	363.638	Pr	500.001	Pr	800.000	Pr	996.311
Qp	32.000	Qp	32.200	Qp	36.500	Qp	36.500
Pu	-0.00165	Pu	0.00147	Pu	0.01090	Pu	-0.00062
Rv	0.00147	Rv	0.01090	Rv	-0.00062	Rv	0.00184
f	0.00310	f	0.02180	f	0.01150	f	0.00230
Pr	363.638	Pr	500.001	Pr	800.000	Pr	996.311
Pr	363.638	Pr	500.001	Pr	800.000	Pr	996.311

**PLANIMETRIA DI PROGETTO**

SCALA 1:1000



COMMITTENTE: **RFI** RETE FERROVIARIA ITALIANA

PROGETTAZIONE: **ITALFERR** GRUPPO FERROVIE DELLO STATO ITALIANE

**INFRASTRUTTURE FERROVIARIE STRATEGICHE DEFINITE DALLA LEGGE OBIETTIVO N.443/01**

U.O. INFRASTRUTTURE CENTRO

**PROGETTO PRELIMINARE**

**LINEA AV/AC VERONA - PADOVA**

**LOTTO FUNZIONALE II**

**ATTRAVERSAMENTO DI VICENZA**

PROGETTO INFRASTRUTTURALE

Planimetria di progetto

3 di 9

SCALA: 1:1000

Rev.	Descrizione	Redatto	Data	Verificato	Data	Approvato	Data	Autore
A	EMERSONE ESISTENTE	F. Togni	08/09/2015	M. Anselmi	08/09/2015	G. Sestini	08/09/2015	F. Togni
B	EMERSONE ESISTENTE	M. Anselmi	08/09/2015	M. Anselmi	08/09/2015	M. Anselmi	08/09/2015	M. Anselmi

File: INDIGOR11P7IF00010038 n. Elab.