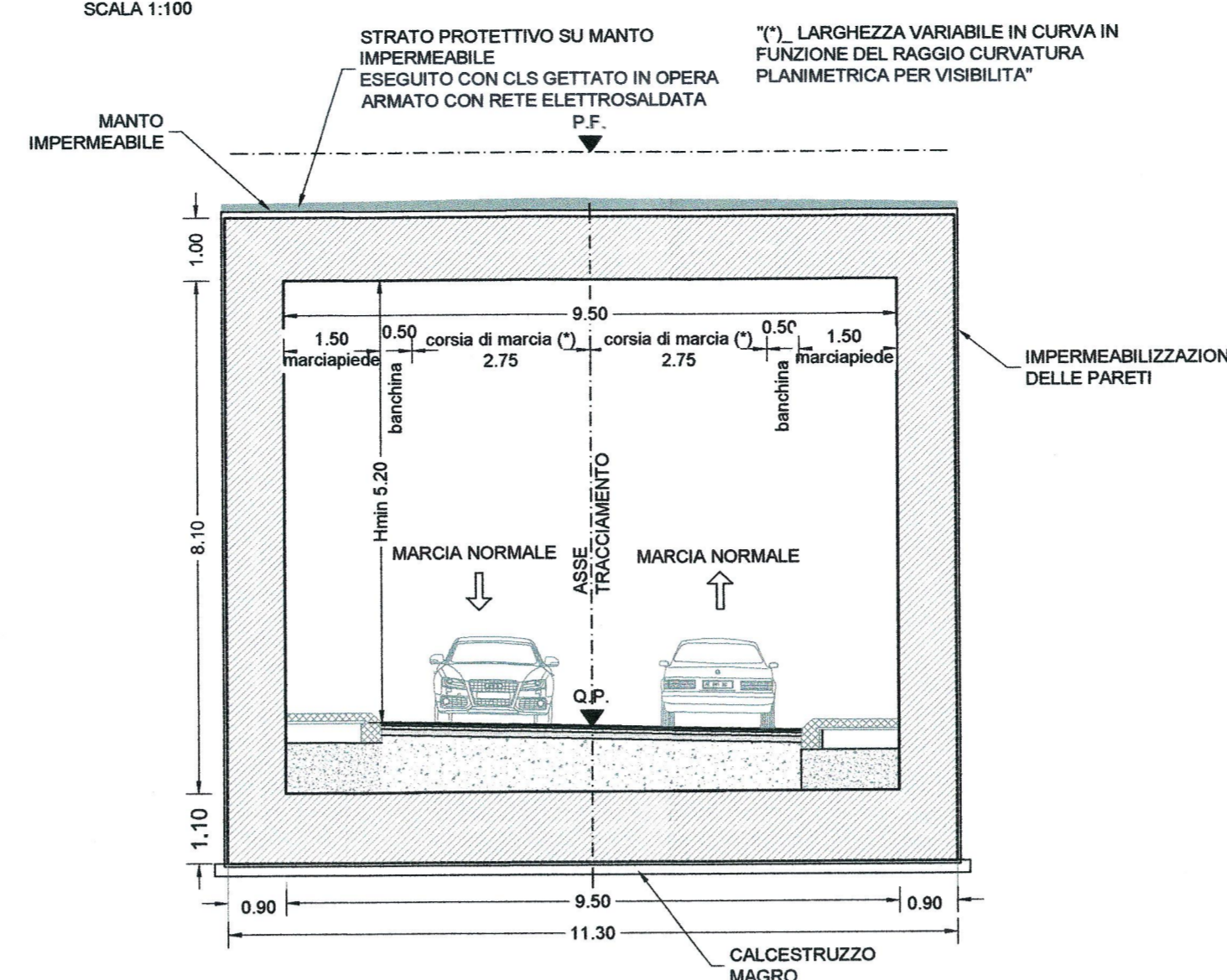
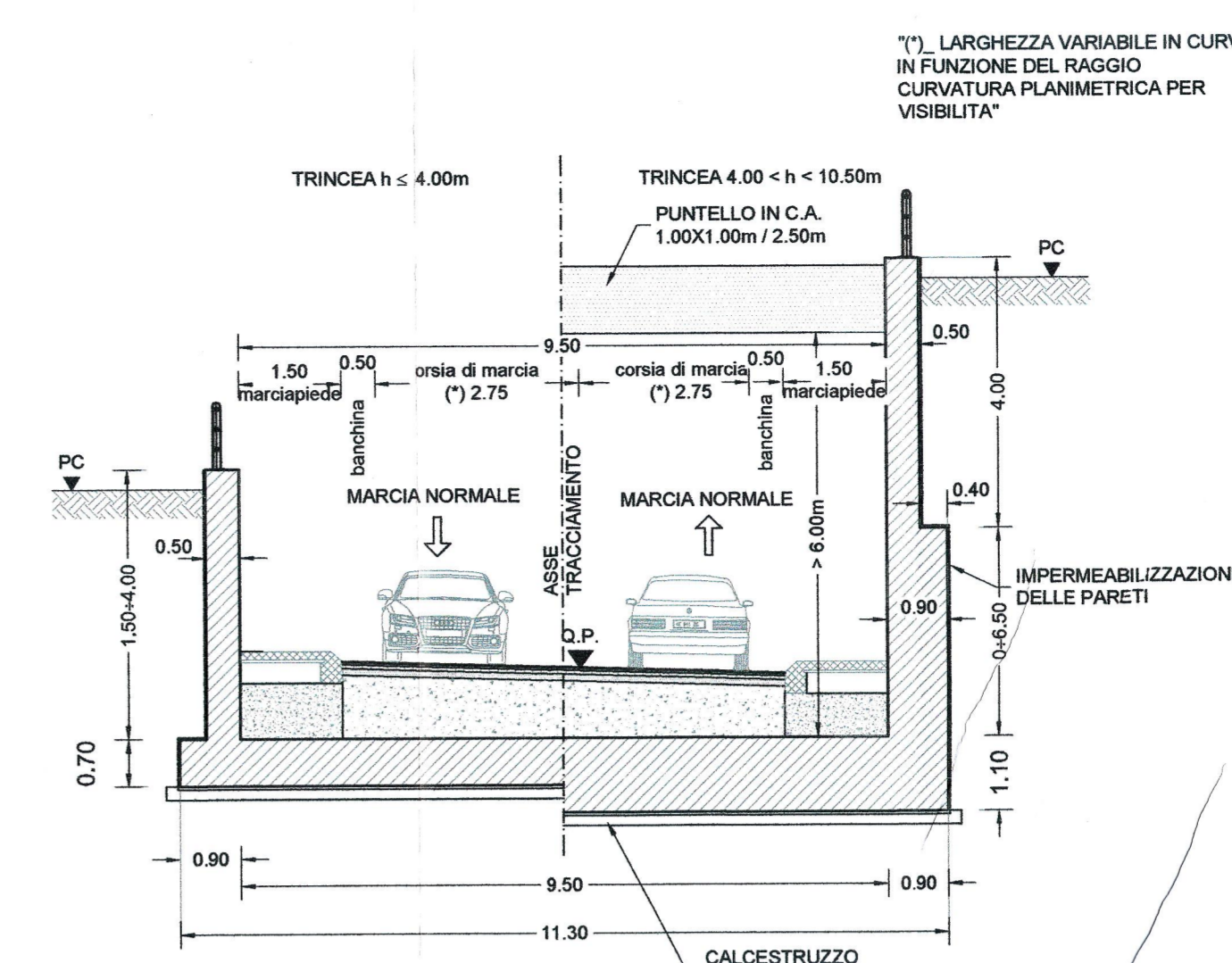


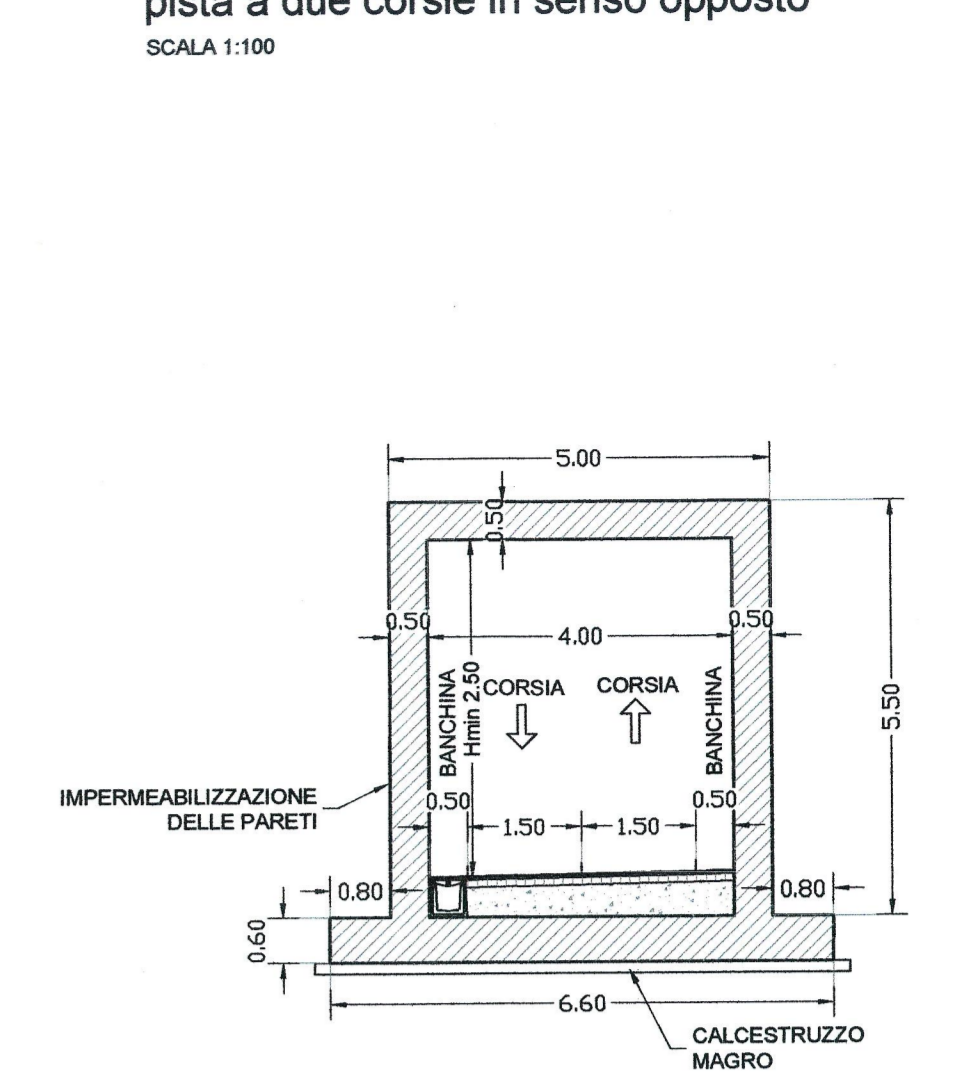
SL01A - SOTTOVIA CARRABILE VIA OLMO
SEZIONE TRASVERSALE IN SOTTOVIA - viabilità bidirezionale
SCALA 1:100



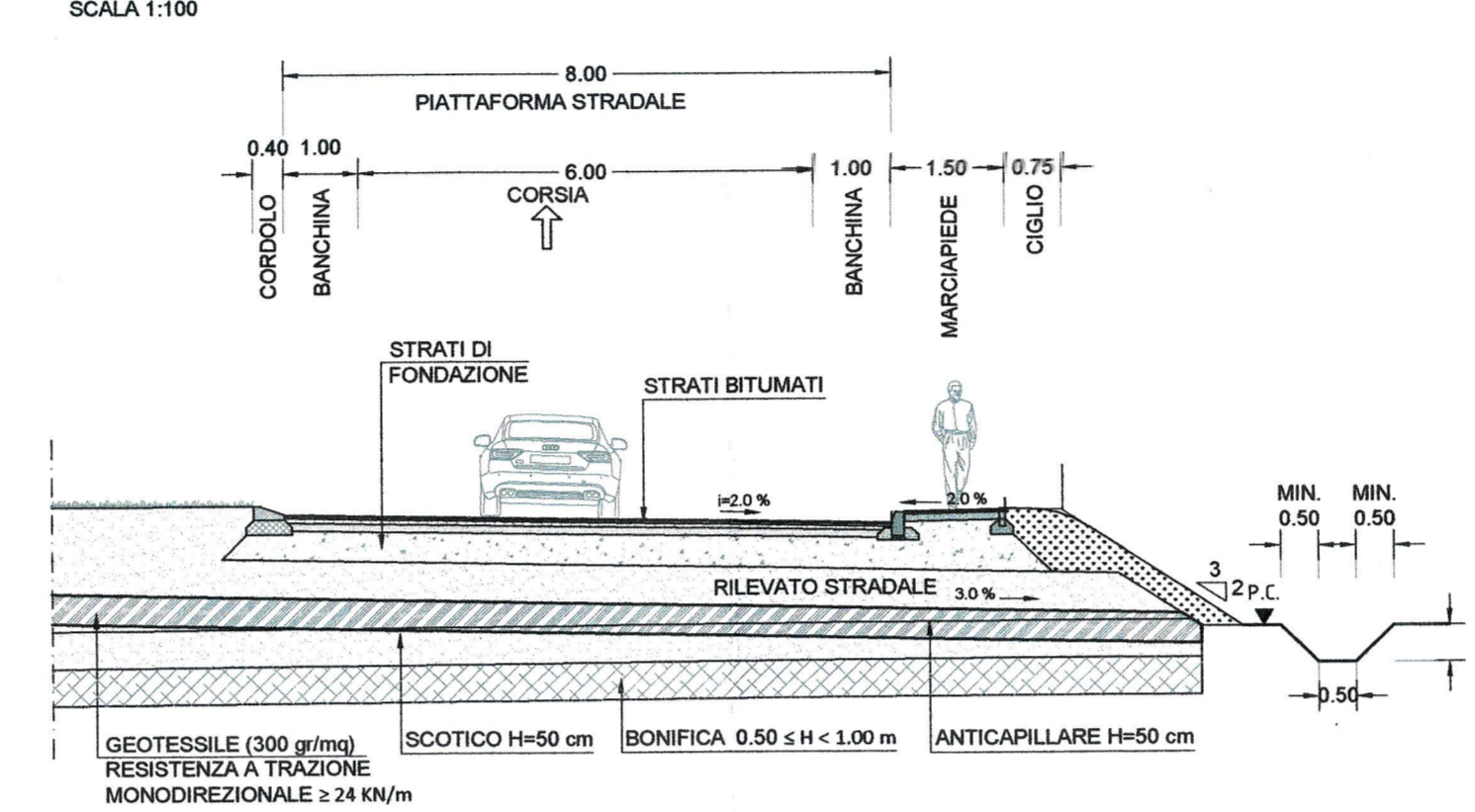
SL01A - SOTTOVIA CARRABILE VIA OLMO
SEZIONE TRASVERSALE IN TRINCEA TRA MURI - viabilità bidirezionale
SCALA 1:100



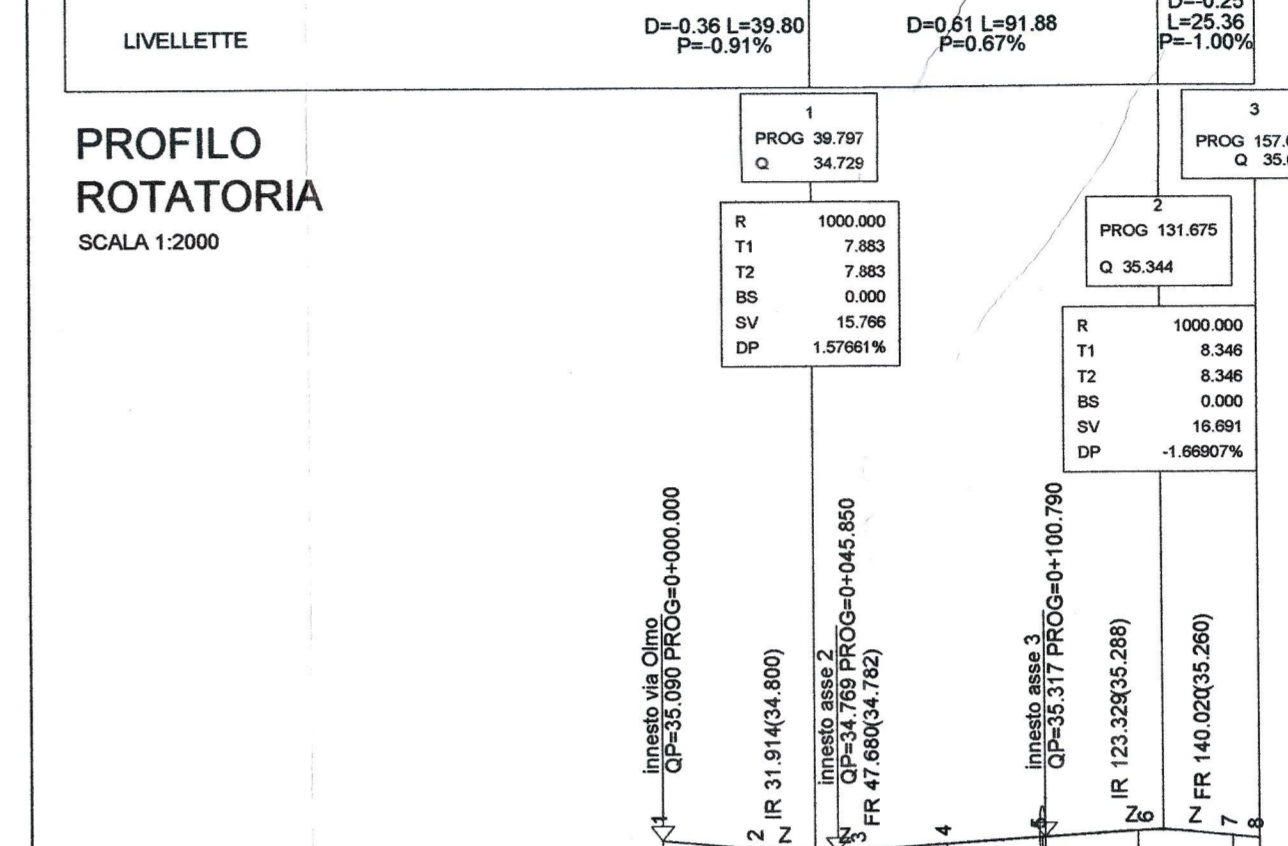
SL01B - ADEGUAMENTO SOTTOVIA
ESISTENTE VIA OLMO
SEZIONE TRASVERSALE IN SOTTOVIA
pista a due corsie in senso opposto
SCALA 1:100



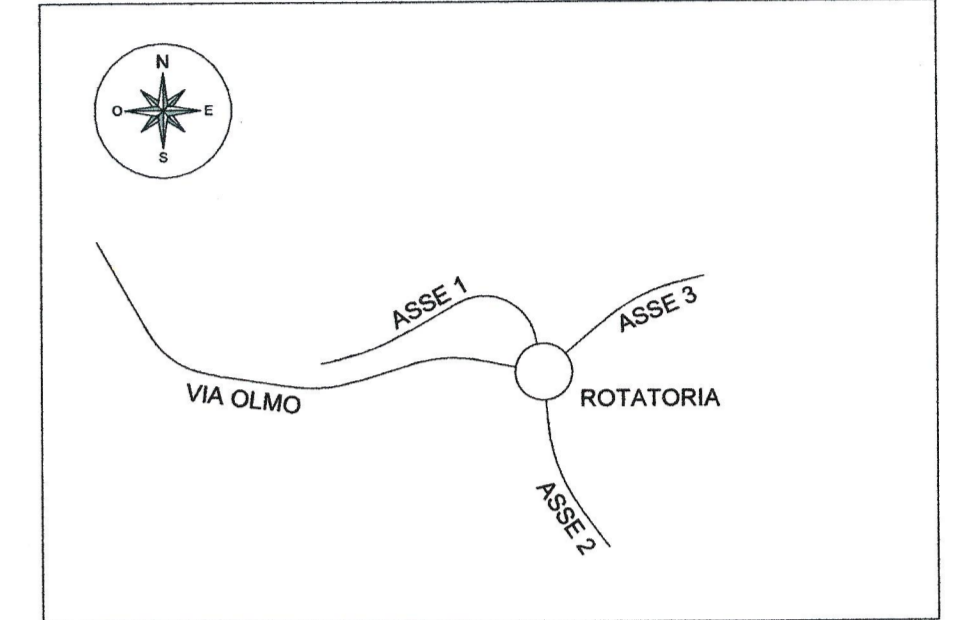
ROTORIA OLMO (ROTORIA)
SCALA 1:100



PROFILO
ROTORIA
SCALA 1:2000



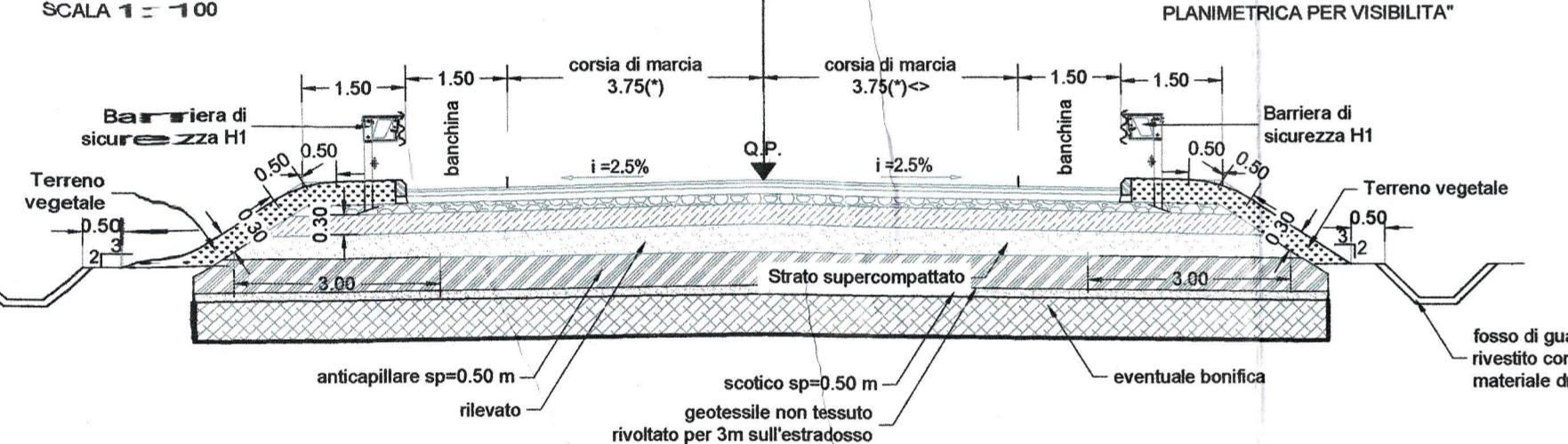
PLANIMETRIA DI INQUADRAMENTO



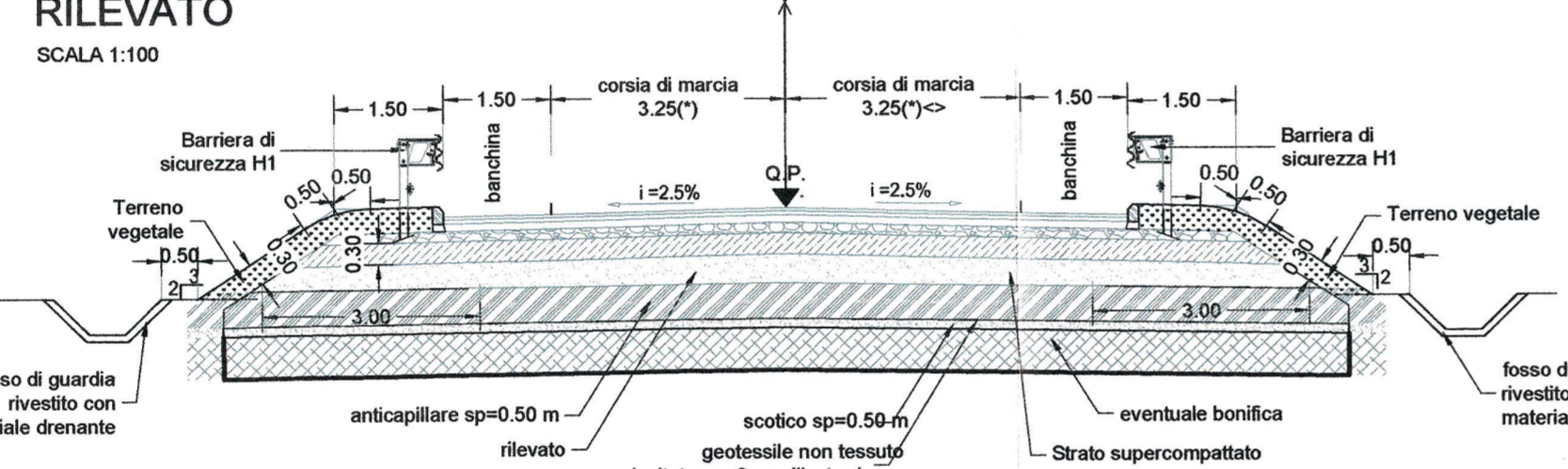
LEGENDA VIABILITA' STRADALE



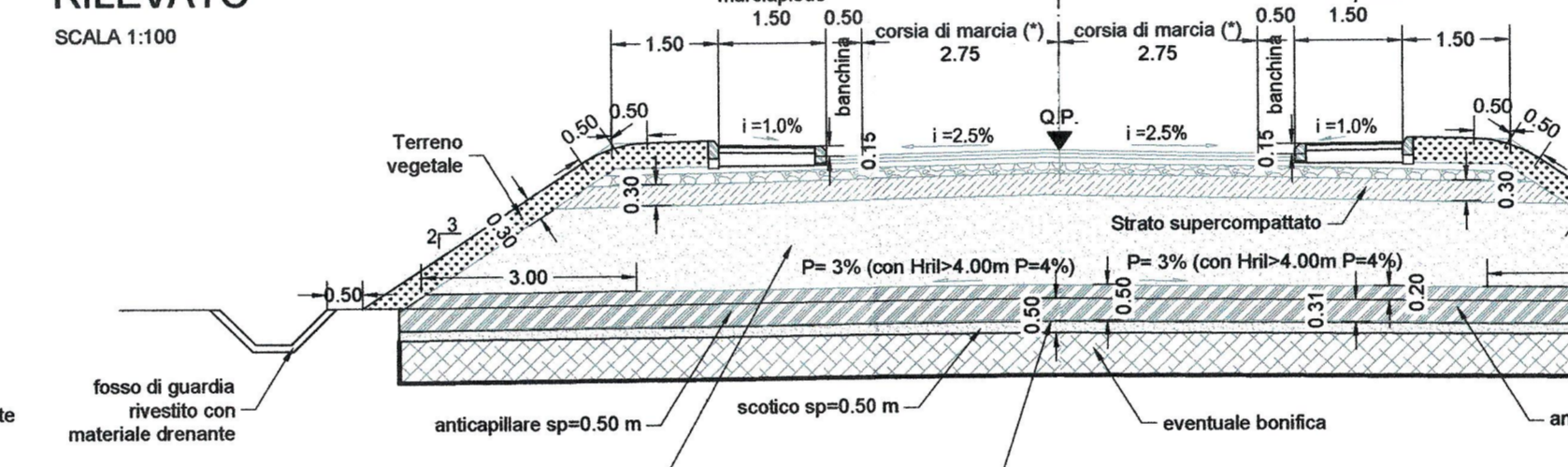
CATEGORIA C1 - EXTRAURBANE SECONDARIE (ASSE 1-ASSE 3)
RILEVATO
SCALA 1:100



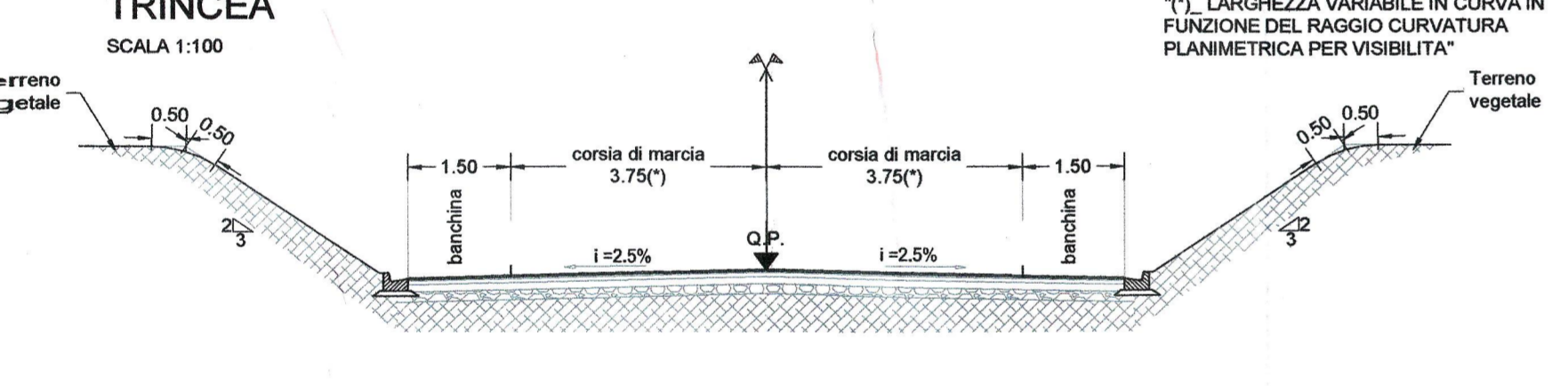
CATEGORIA F2 - LOCALE (ASSE 2)
RILEVATO
SCALA 1:100



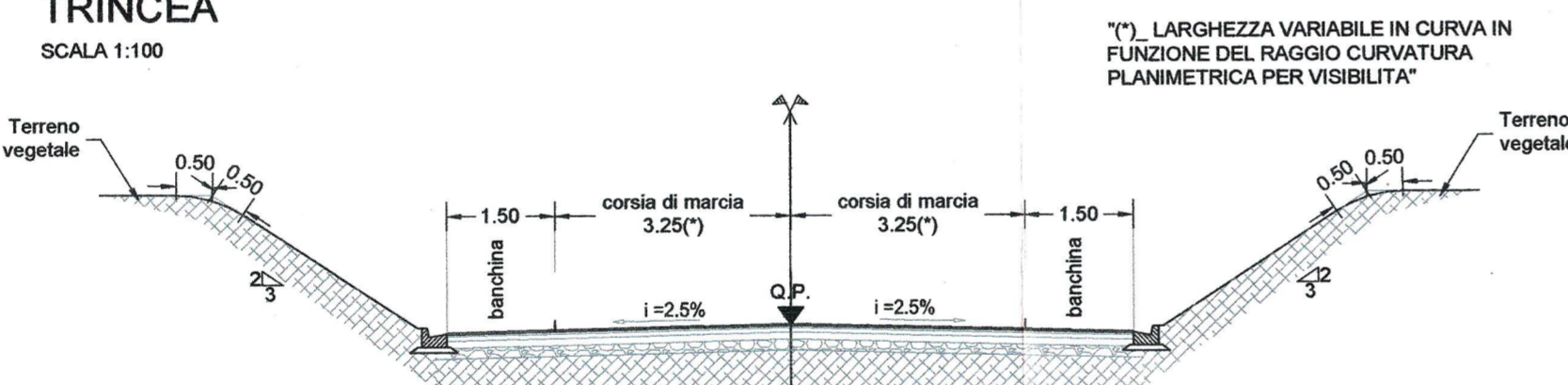
CATEGORIA F1 - LOCALE (VIA OLMO)
RILEVATO
SCALA 1:100



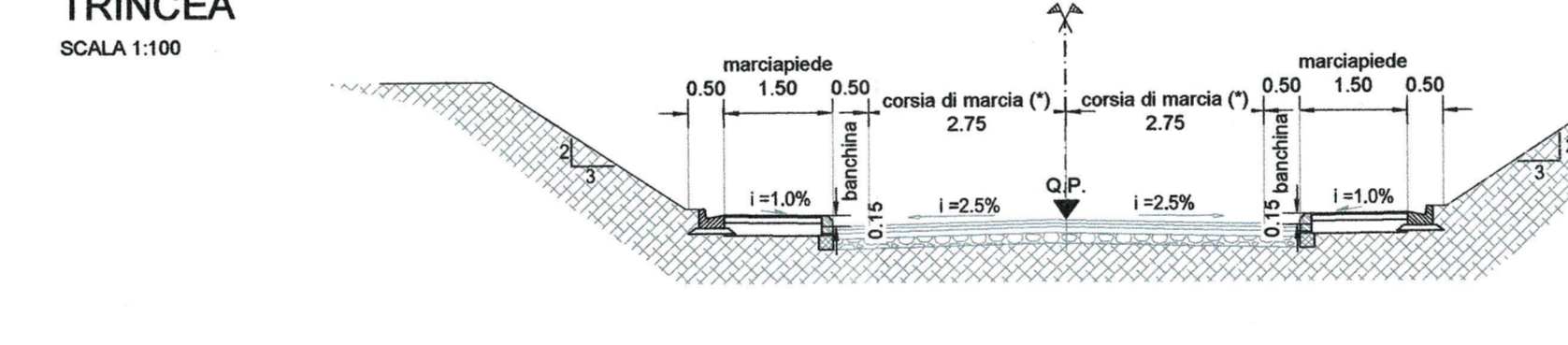
CATEGORIA C1 - EXTRAURBANE SECONDARIE (ASSE 1)
TRINCEA
SCALA 1:100



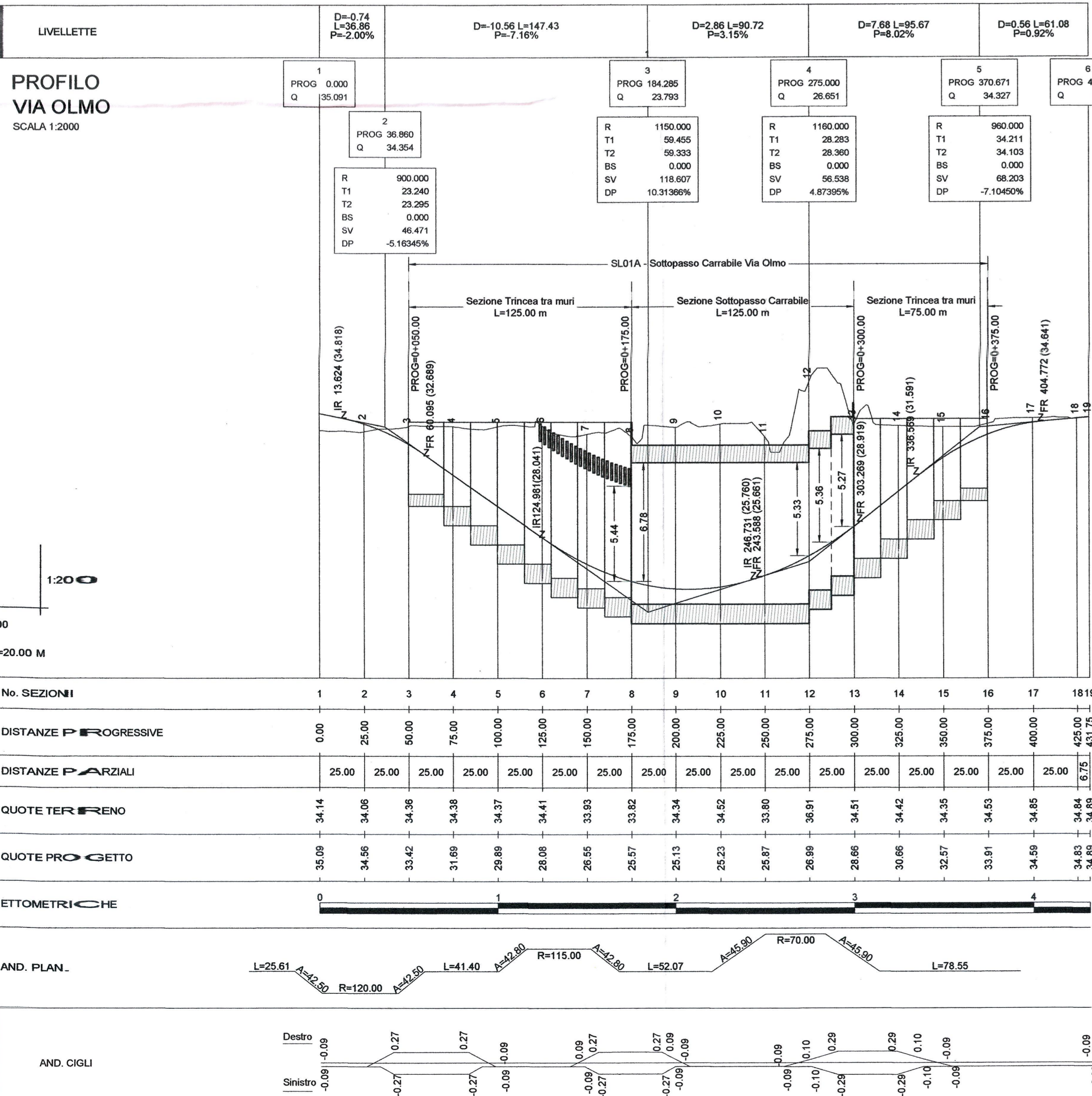
CATEGORIA F2 - LOCALE (ASSE 2)
TRINCEA
SCALA 1:100



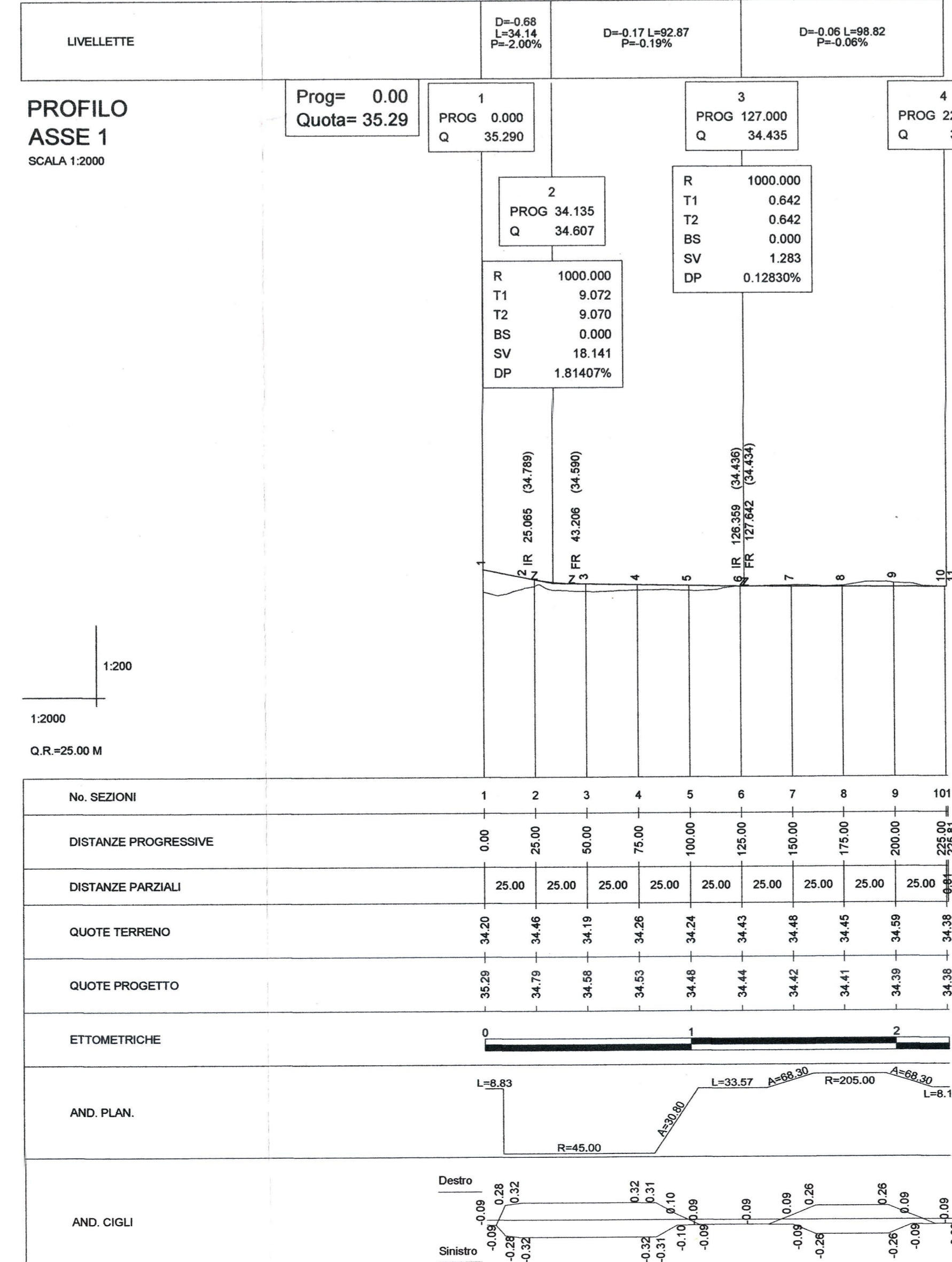
CATEGORIA F1 - LOCALE (VIA OLMO)
TRINCEA
SCALA 1:100



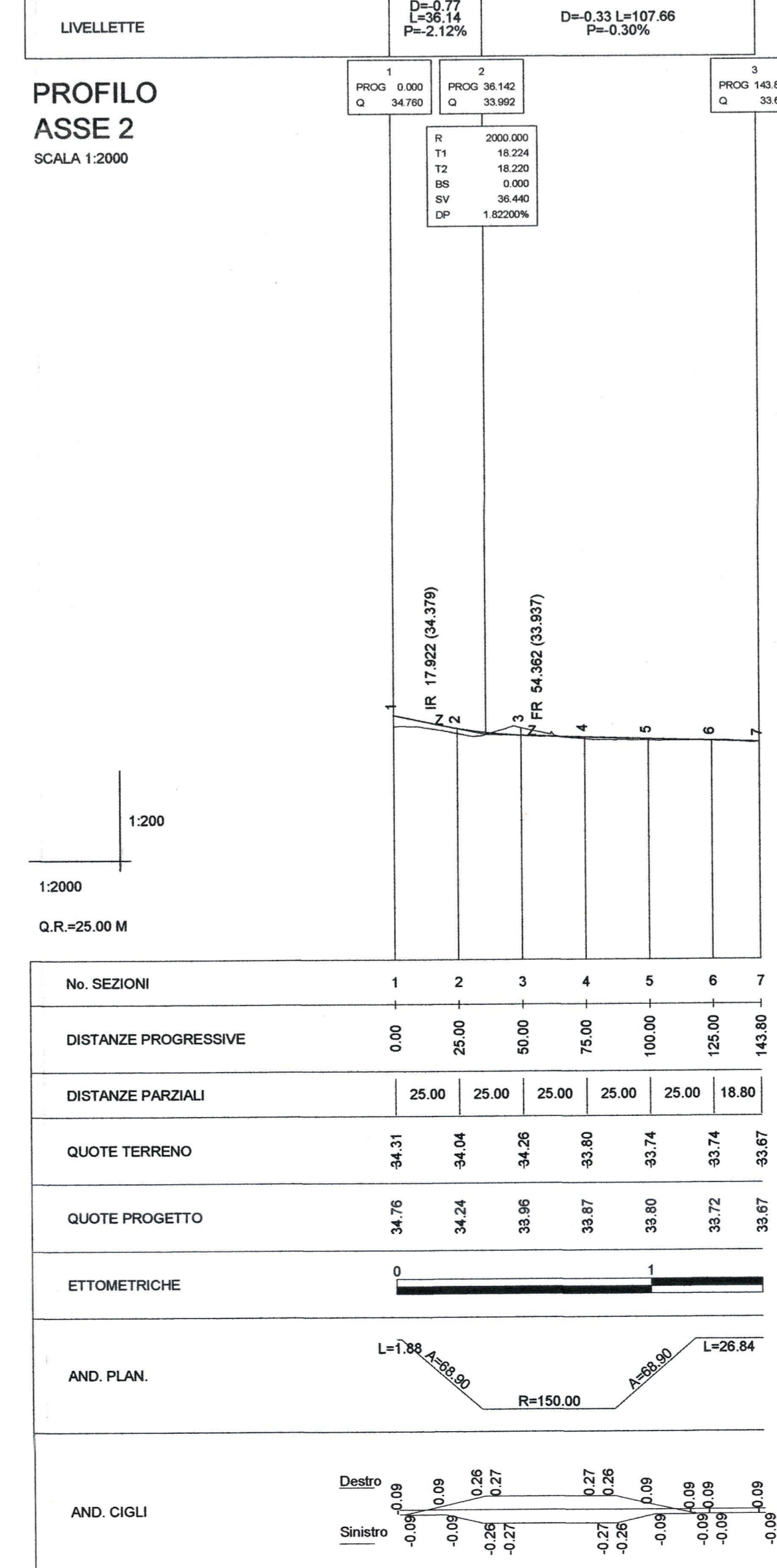
PROFILO
VIA OLMO
SCALA 1:2000



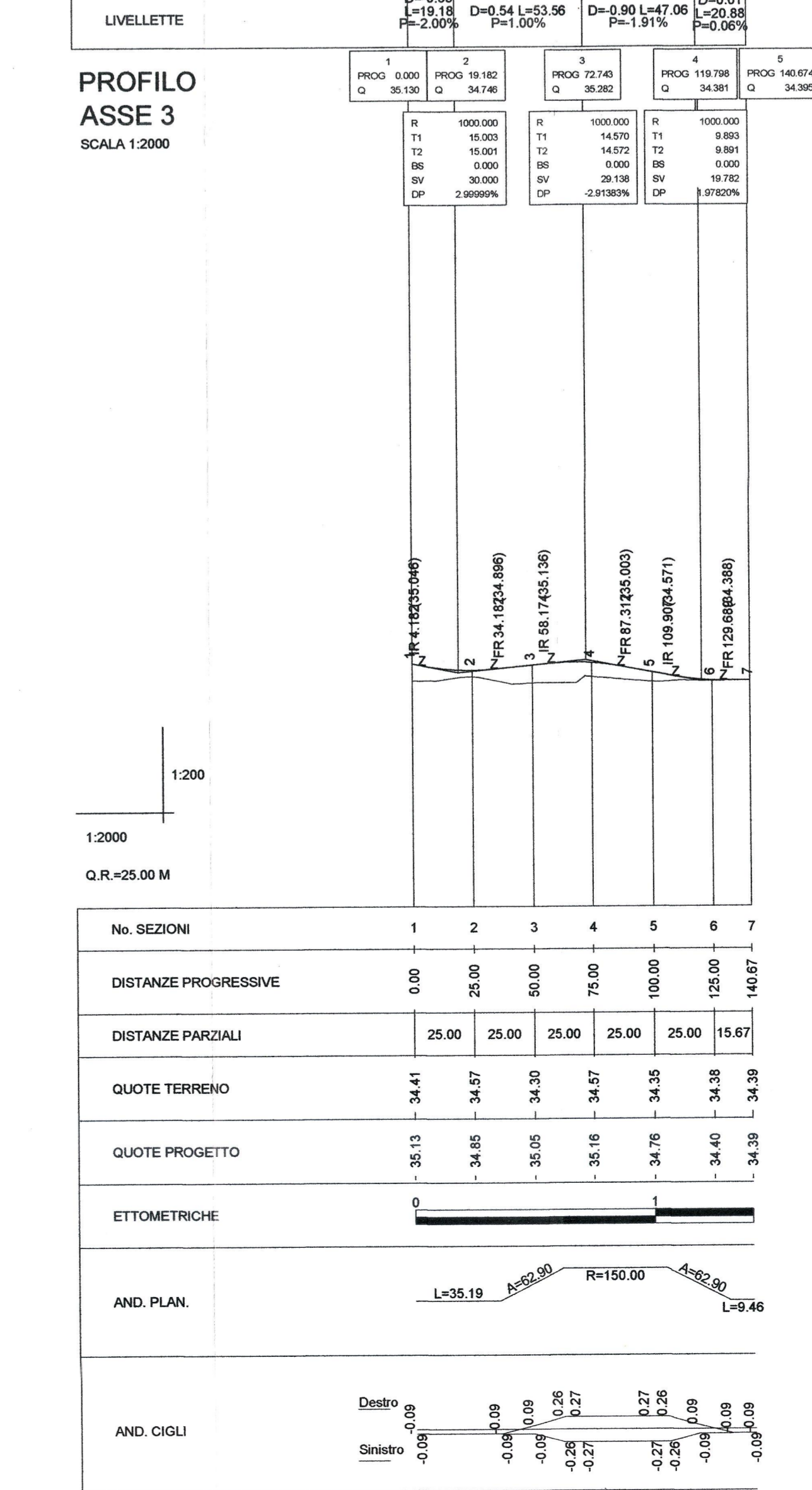
PROFILO
ASSE 1
SCALA 1:2000



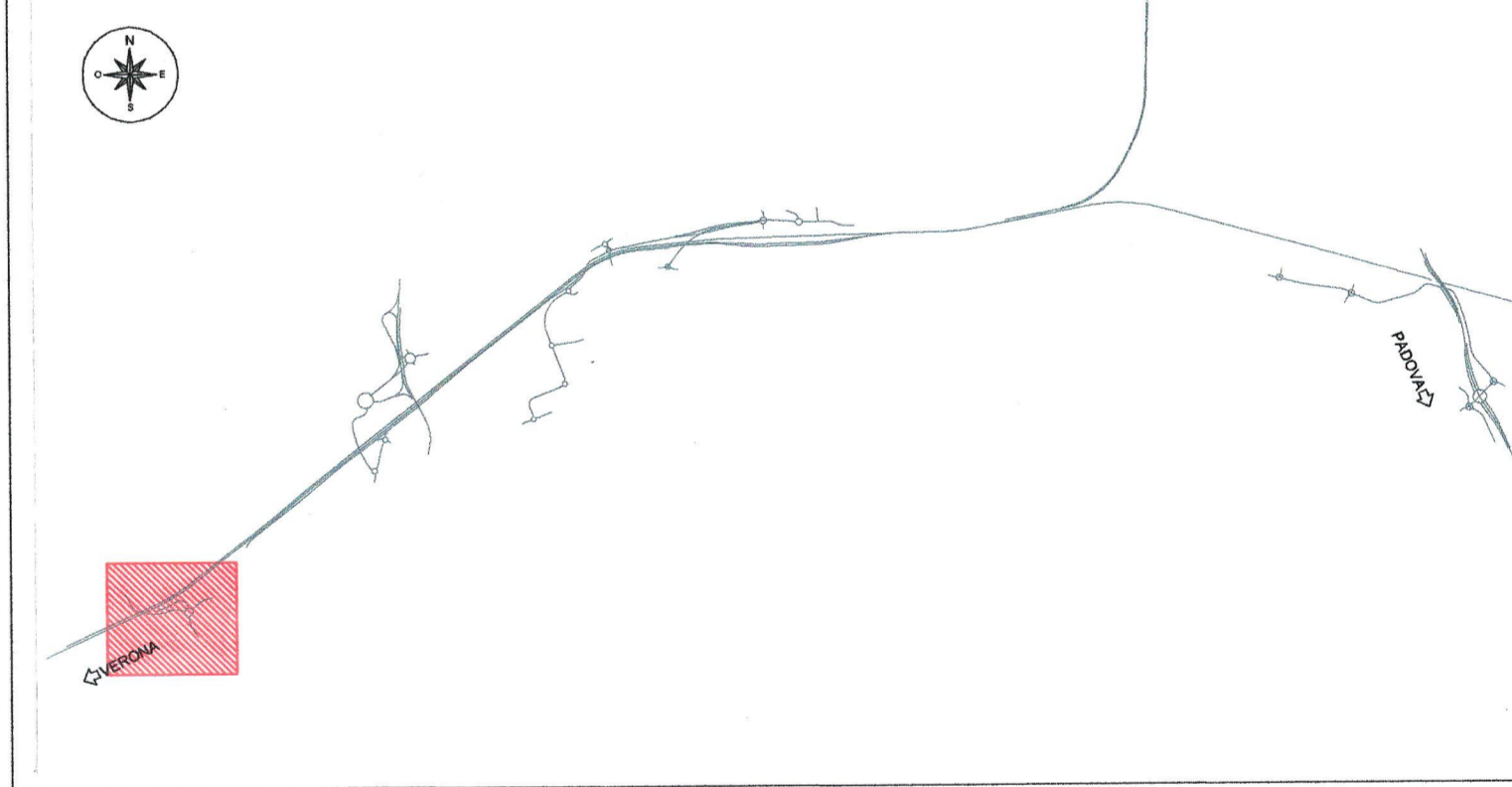
PROFILO
ASSE 2
SCALA 1:2000



PROFILO
ASSE 3
SCALA 1:2000



KEY PLAN



COMMITTENTE: **RFI** RETE FERROVIARIA ITALIANA - GRUPPO FERROVIE DELLO STATO ITALIANE

PROGETTAZIONE: **ITALFER** GRUPPO FERROVIE DELLO STATO ITALIANE

INFRASTRUTTURE FERROVIARIE STRATEGICHE DEFINITE DALLA LEGGE OBIETTIVO N.443/01

U.O. INFRASTRUTTURE CENTRO

PROGETTO PRELIMINARE

LINEA AVIC VERONA - PADOVA
LOTTO FUNZIONALE II
ATTRAVERSAMENTO DI VICENZA
PROGETTO VIABILITA' STRADALE

NOV1 Via Olmo
Planimetria di progetto, profili e sezioni tipo

SCALA: varie

COMMESSA LOTTO FASE ENTE TIPO DOC. OPERA/DISCIPLINA PROG. REV.

1	N01	00	R	11	PZ	NV0100	001	A
---	-----	----	---	----	----	--------	-----	---

Rev.	Descrizione	Redatto	Data	Verificato	Data	Approvato	Data	Autorizzato	Data
A	esecuzione	F. Basso	04/09/2017	M. Vignola	04/09/2017	F. Basso	04/09/2017	F. Basso	04/09/2017

Fig. IN000R11PZNV0100001A (n. Tab. _____)