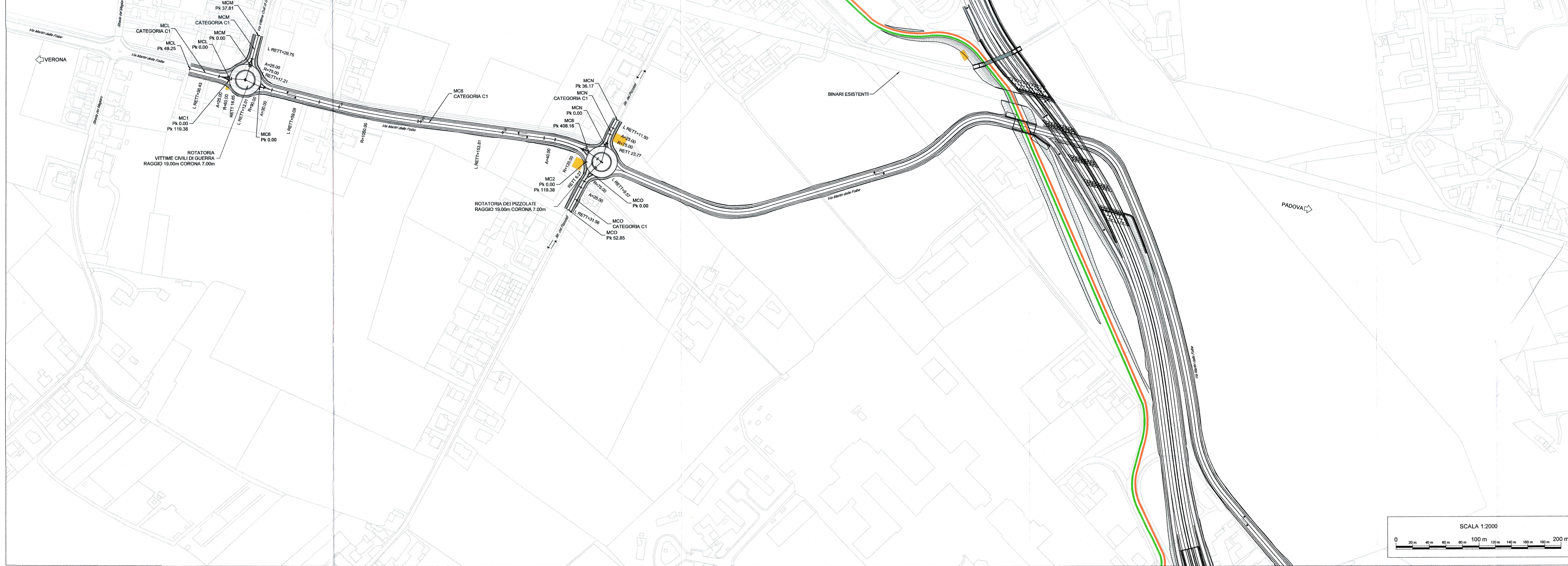
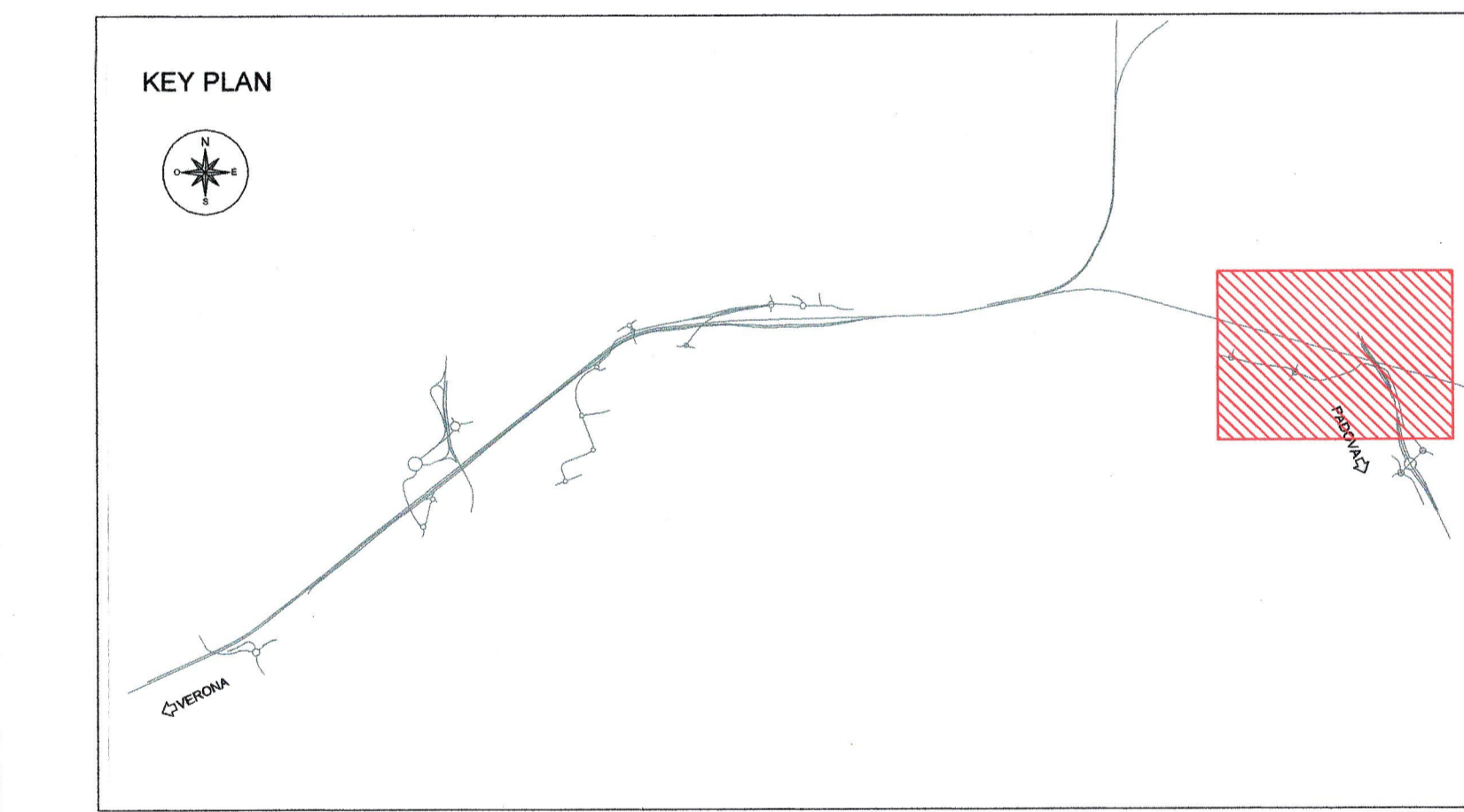
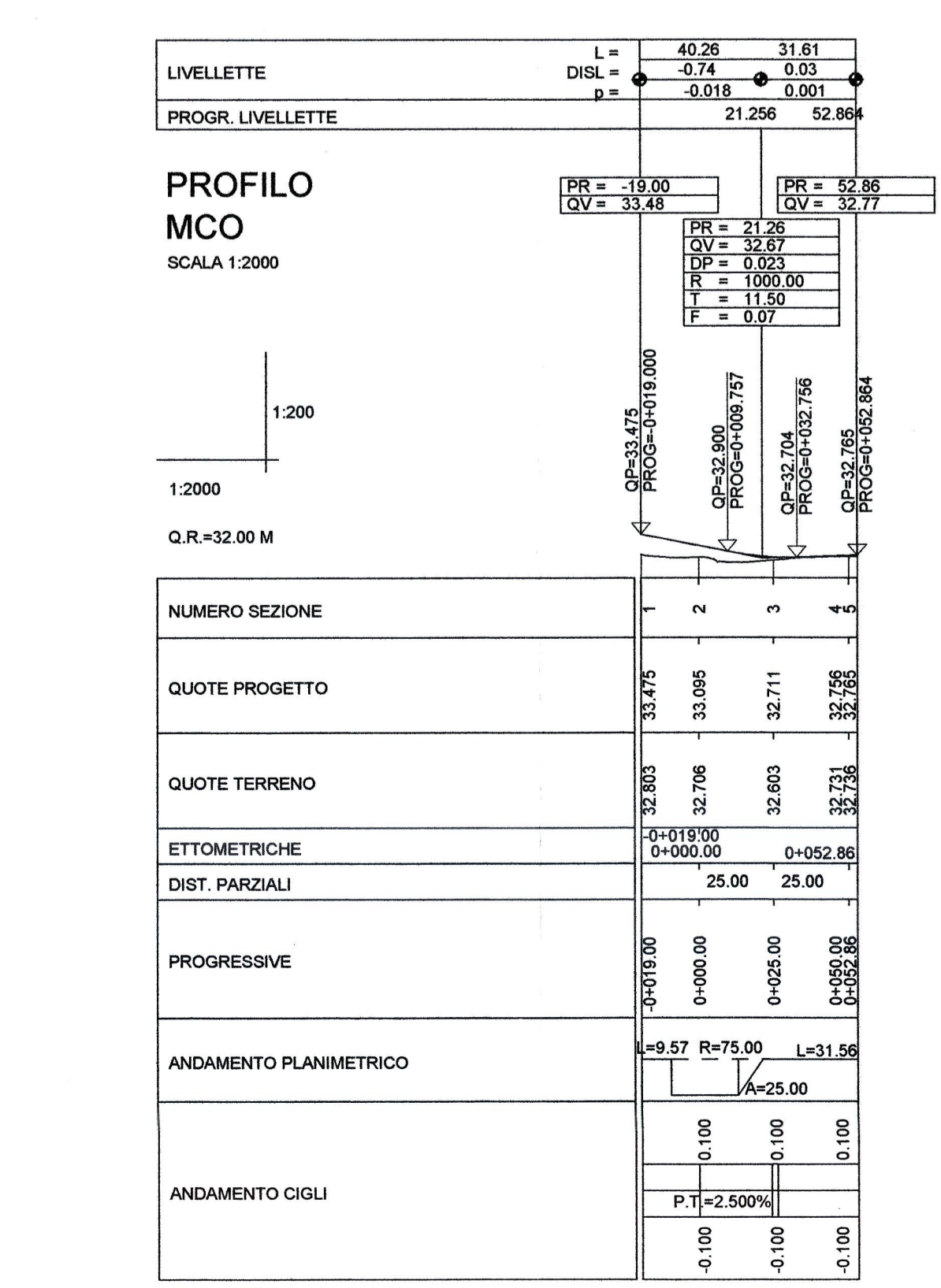
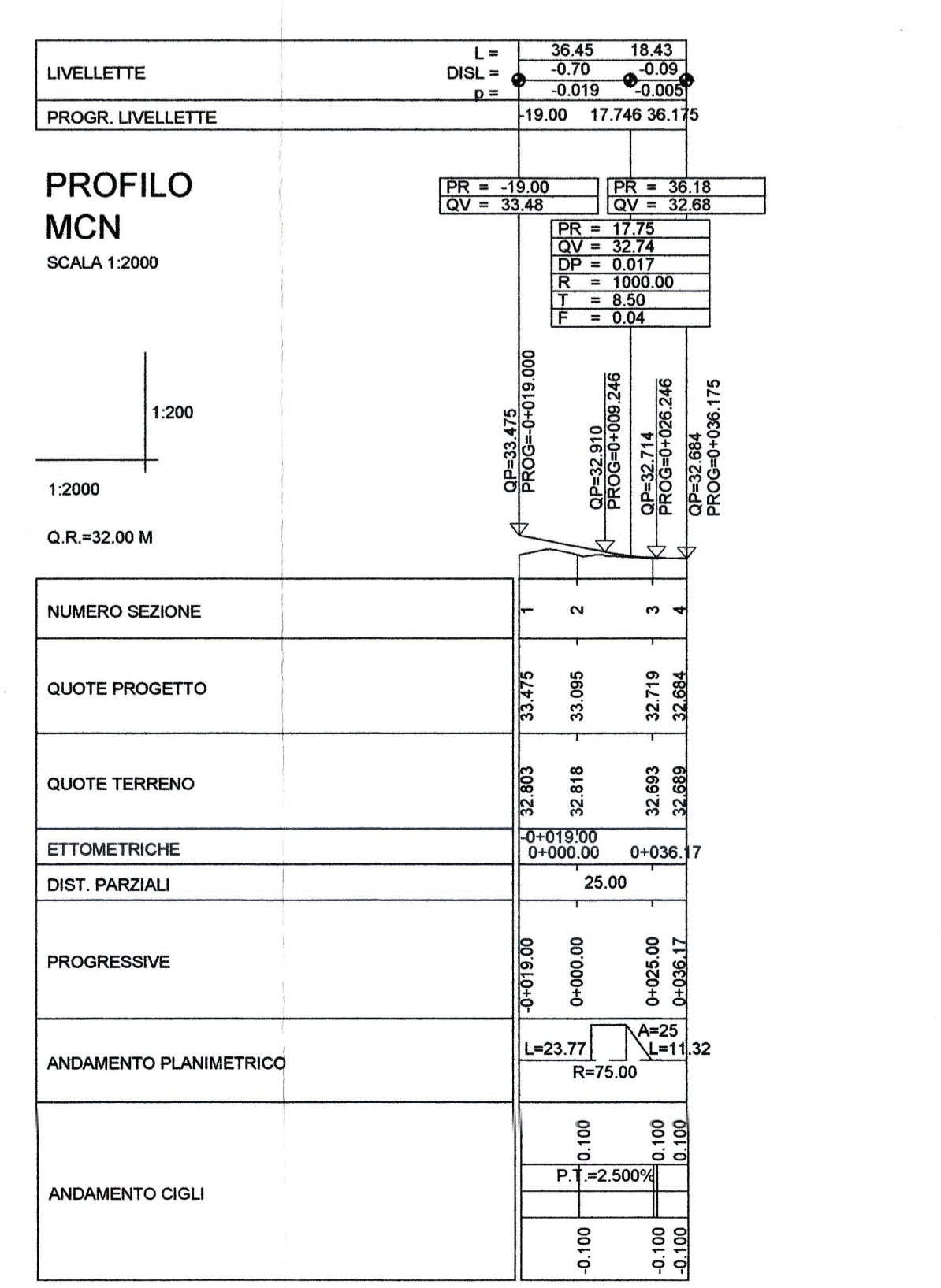
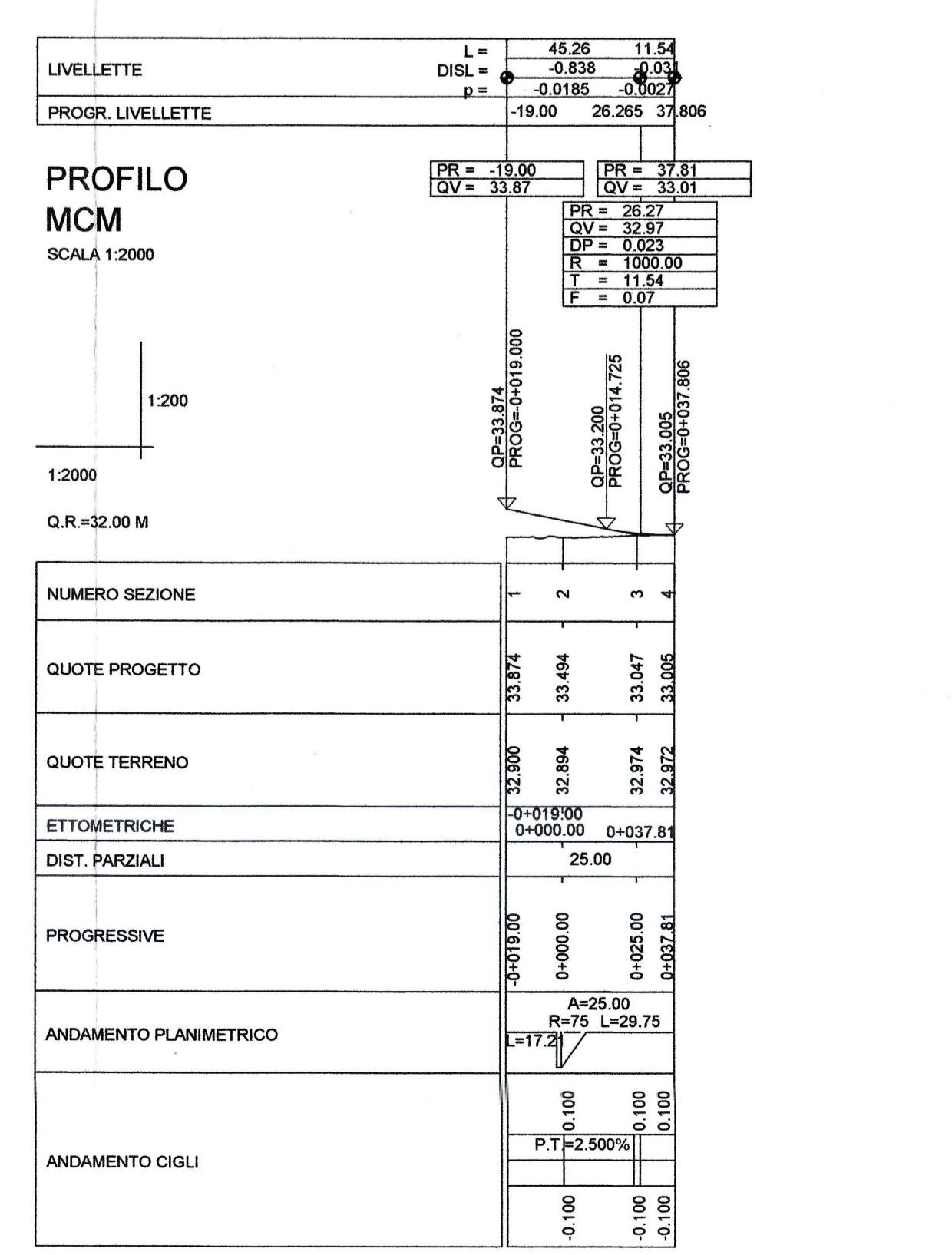
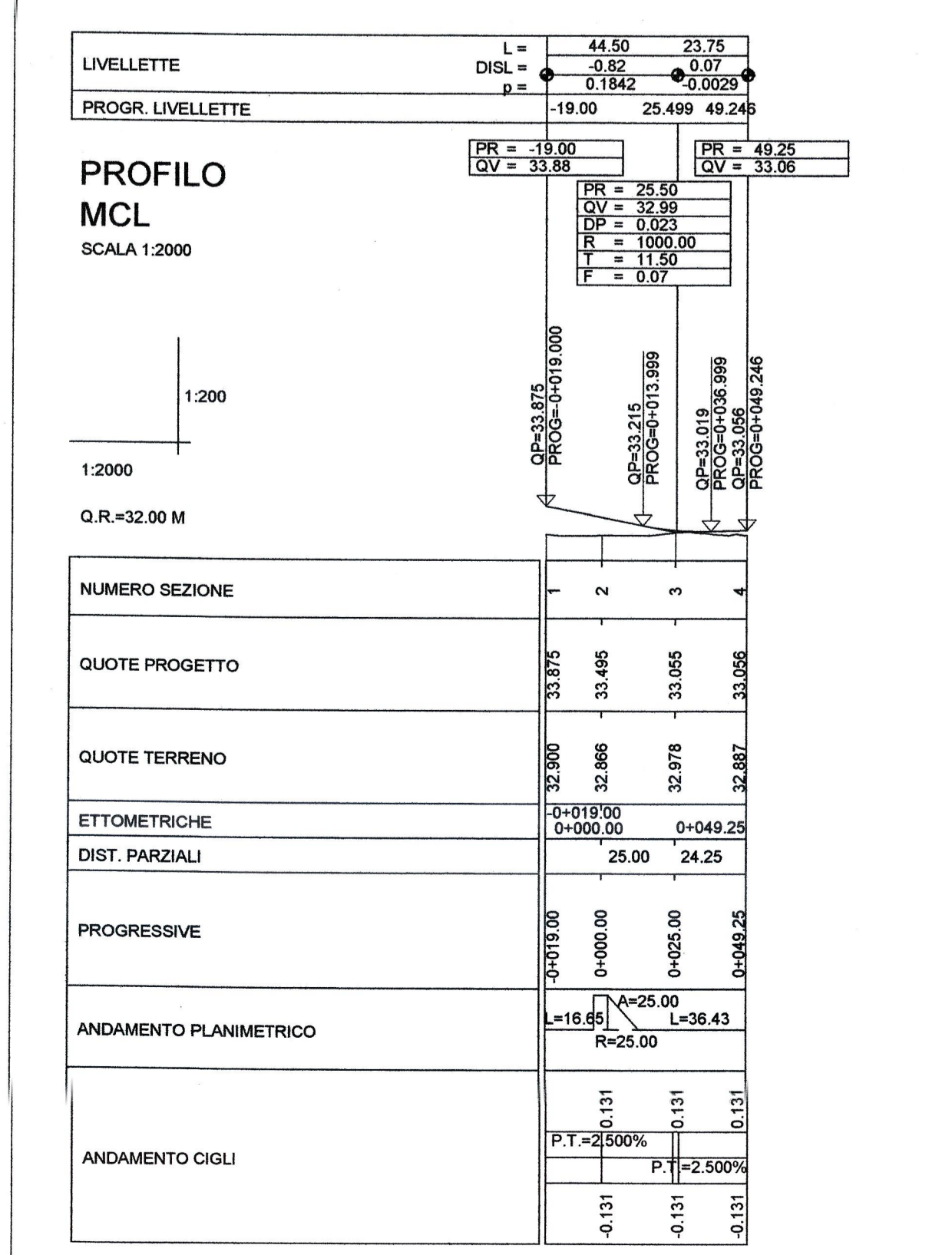
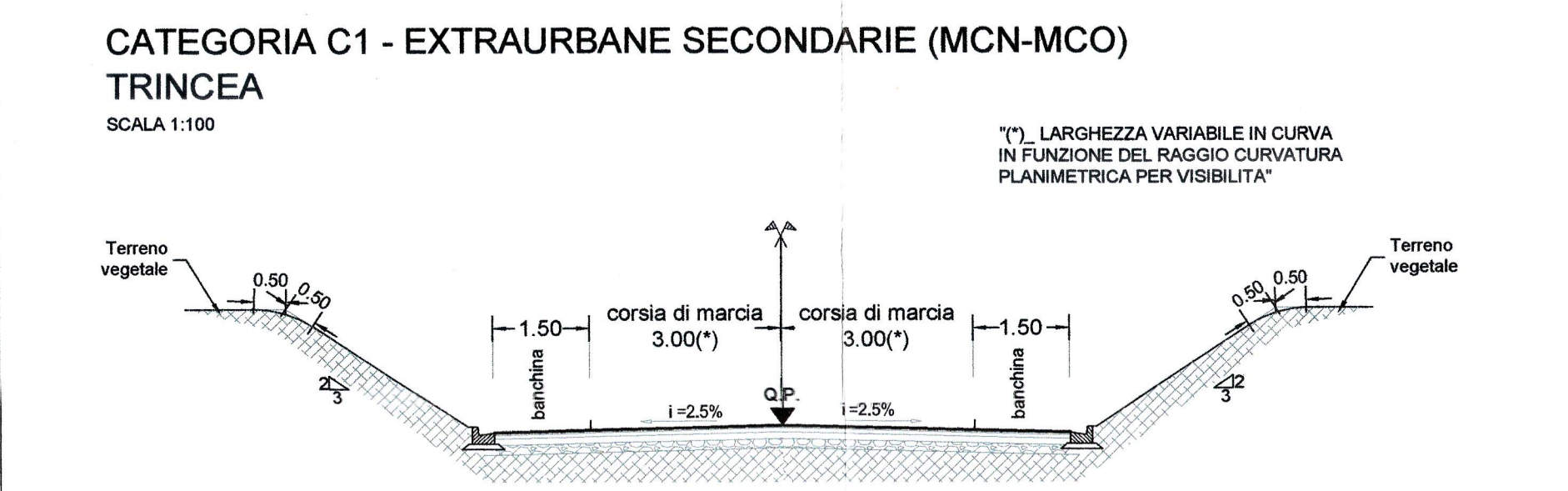
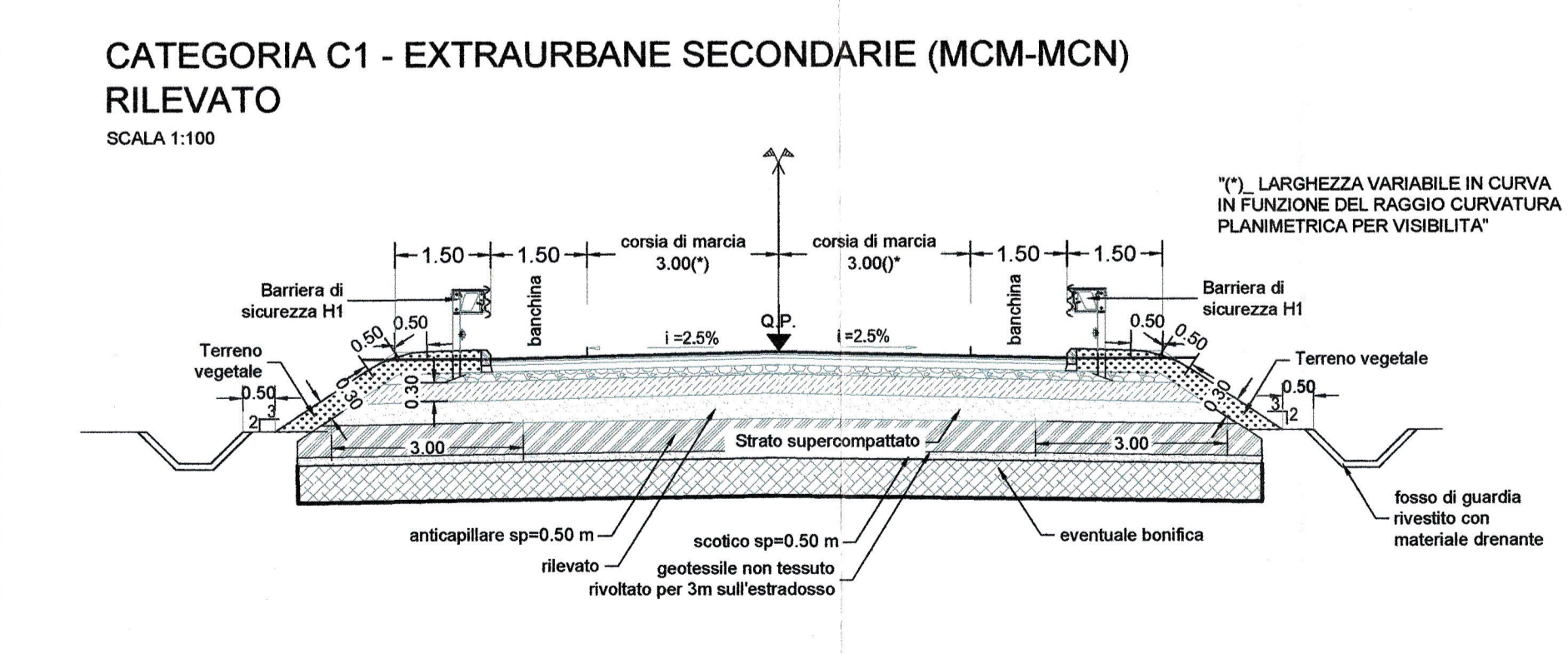
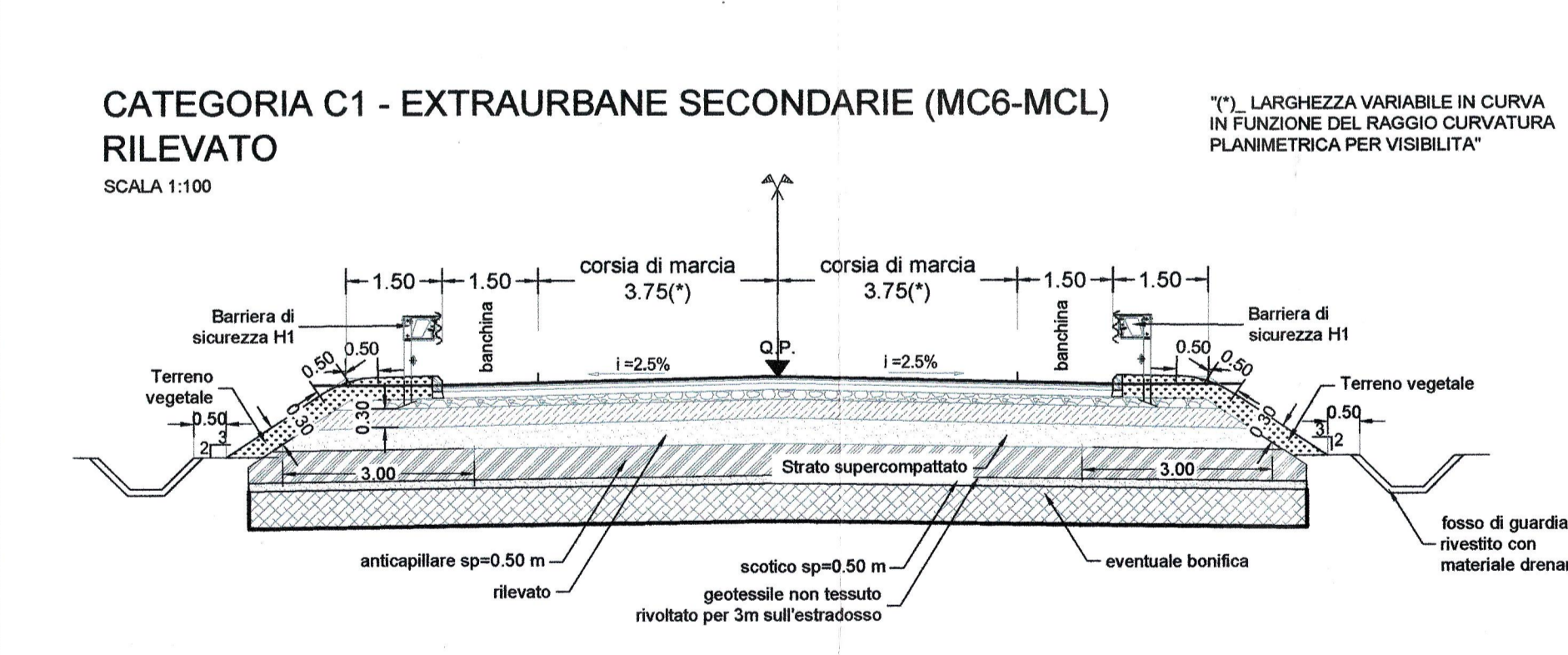
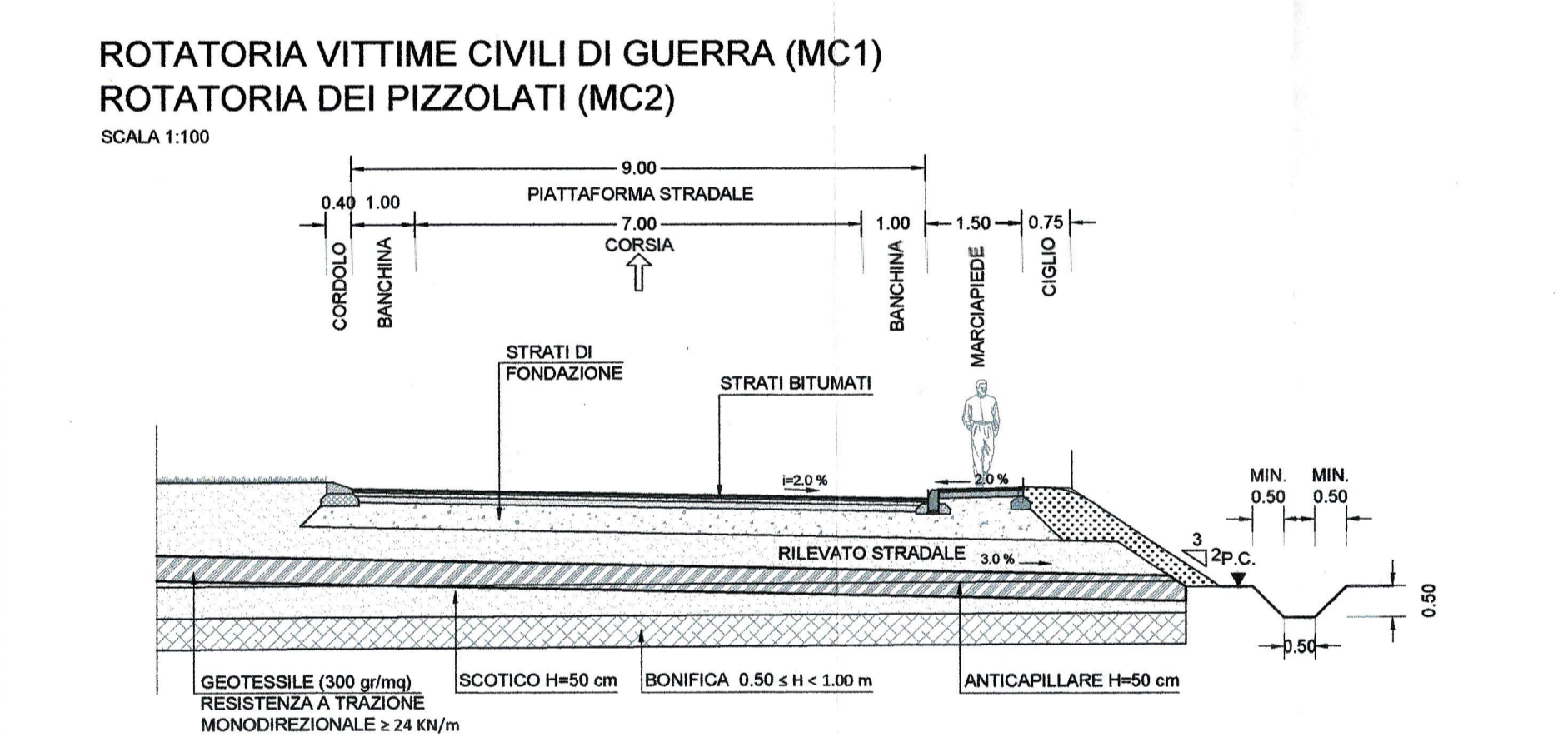
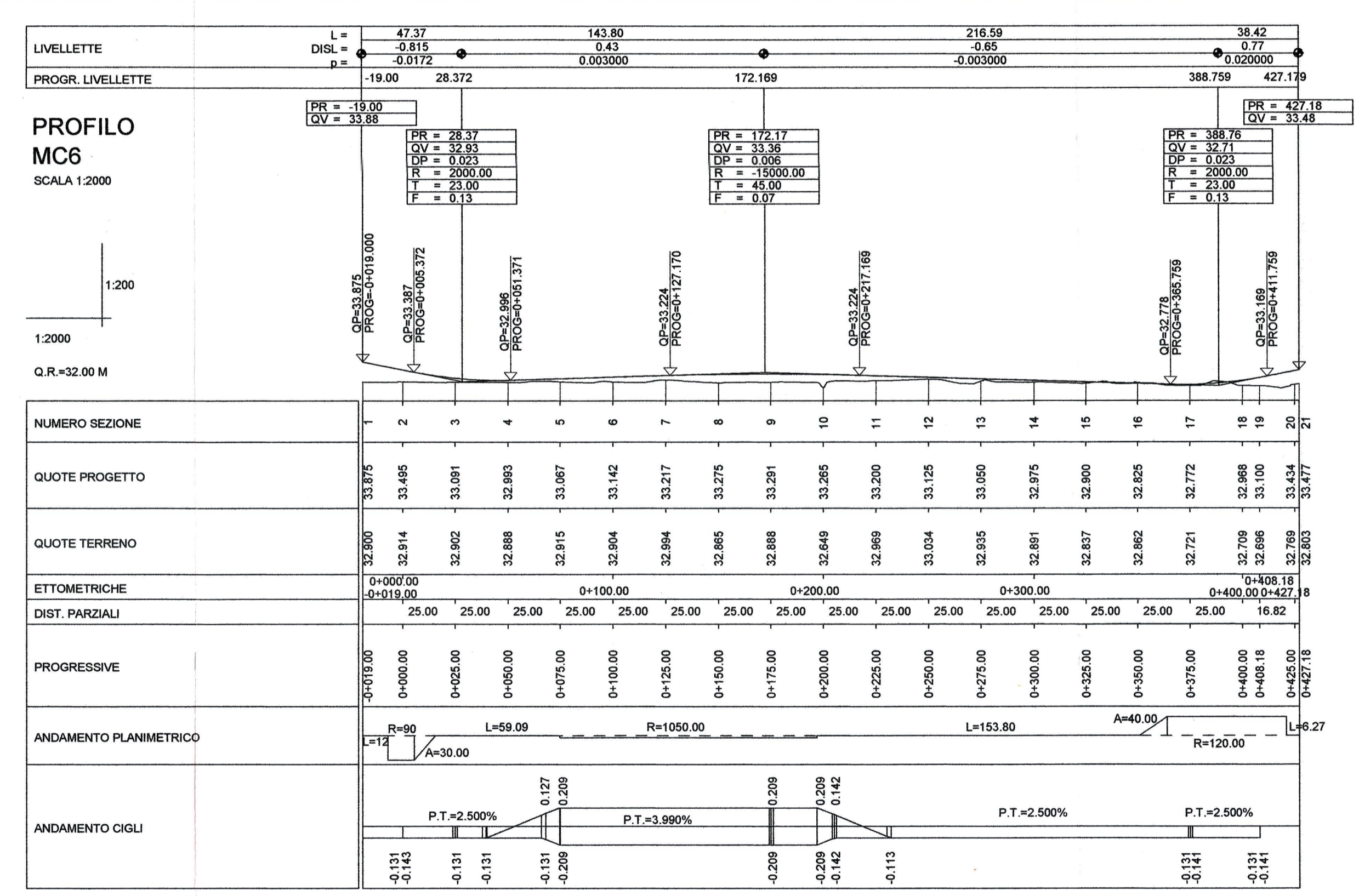
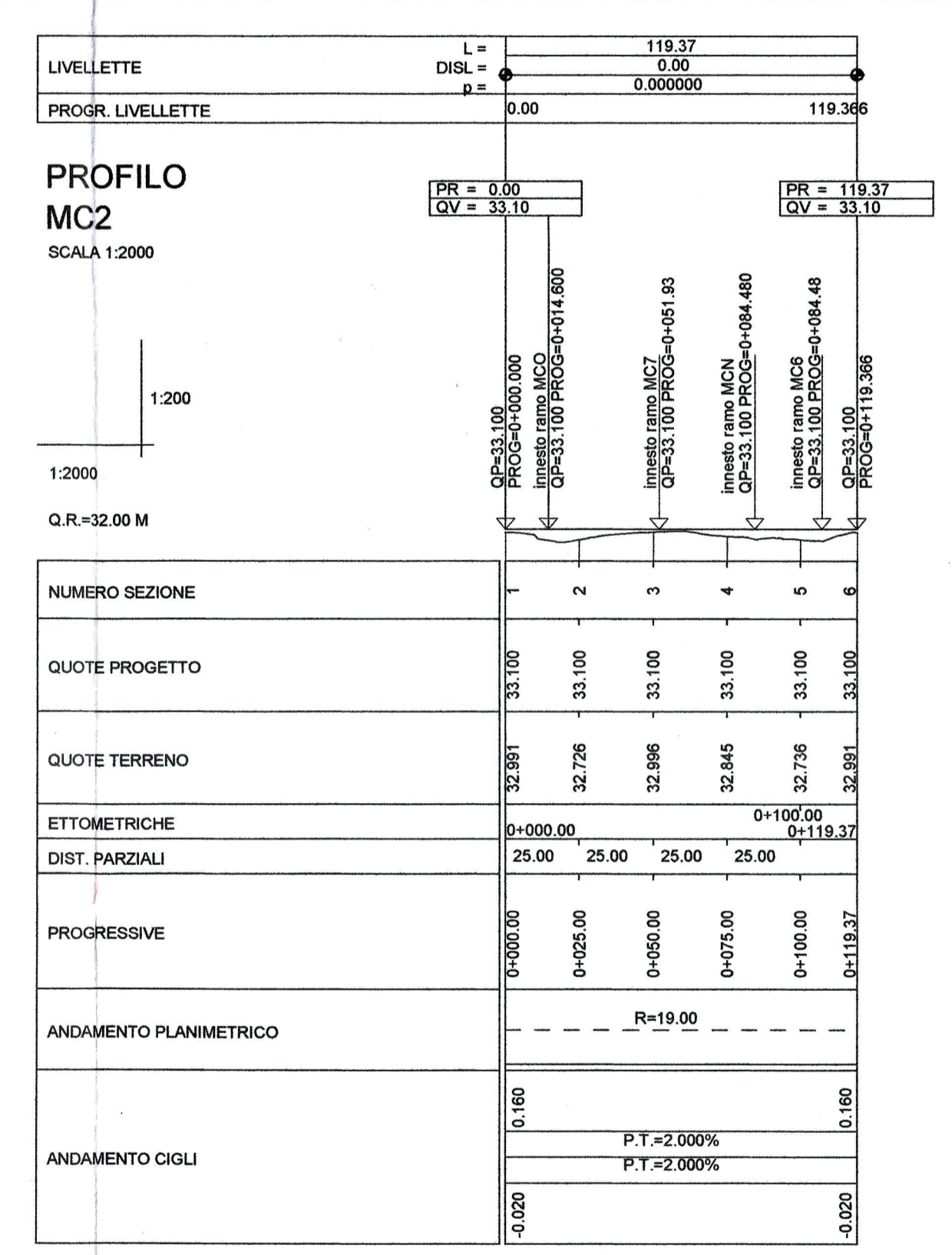
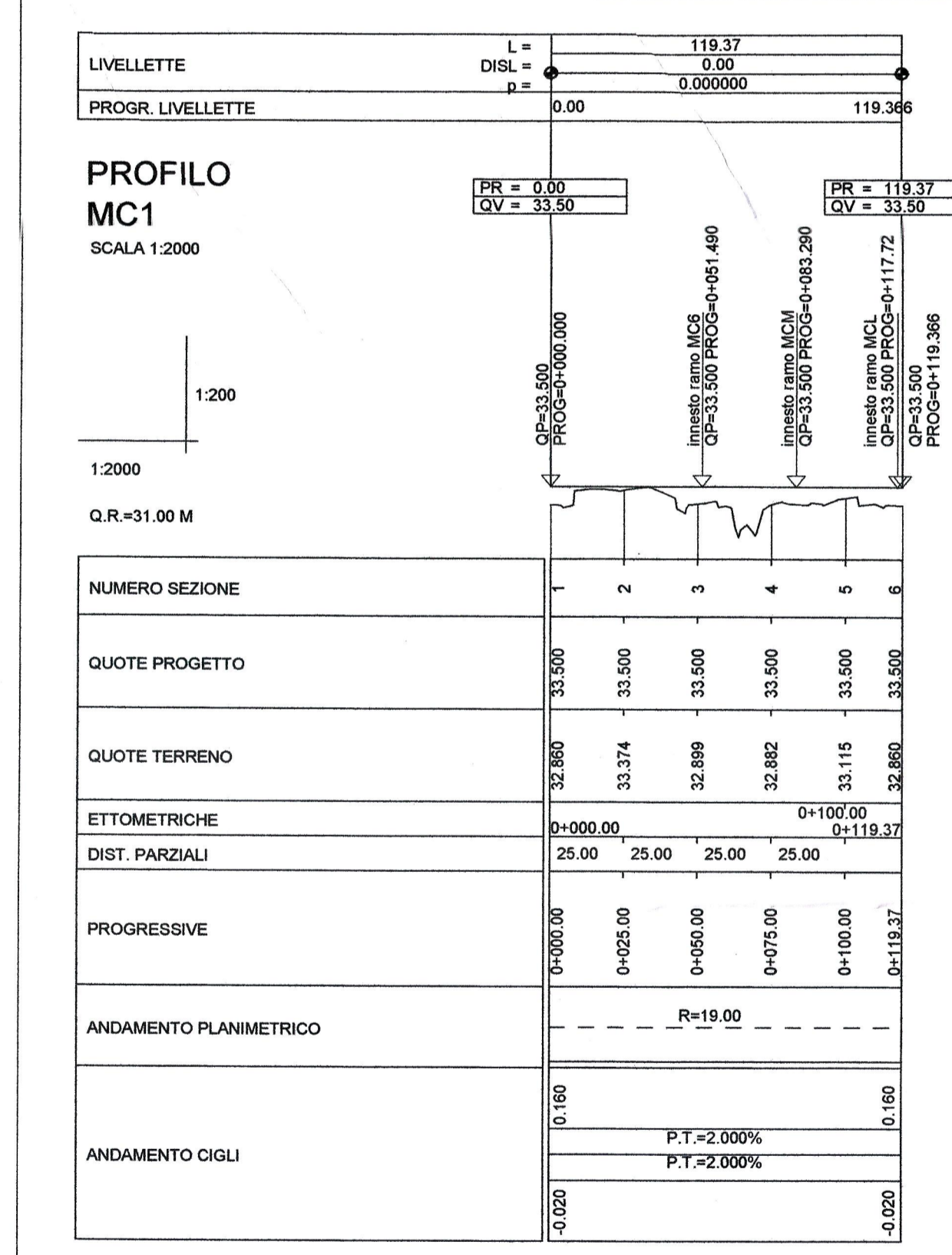
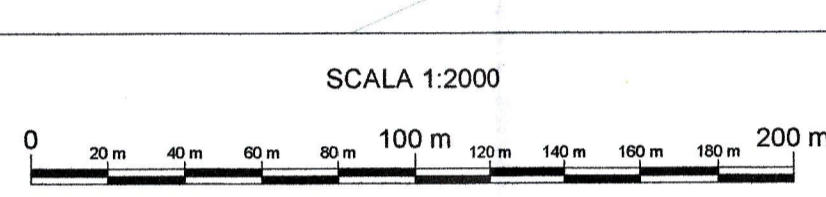
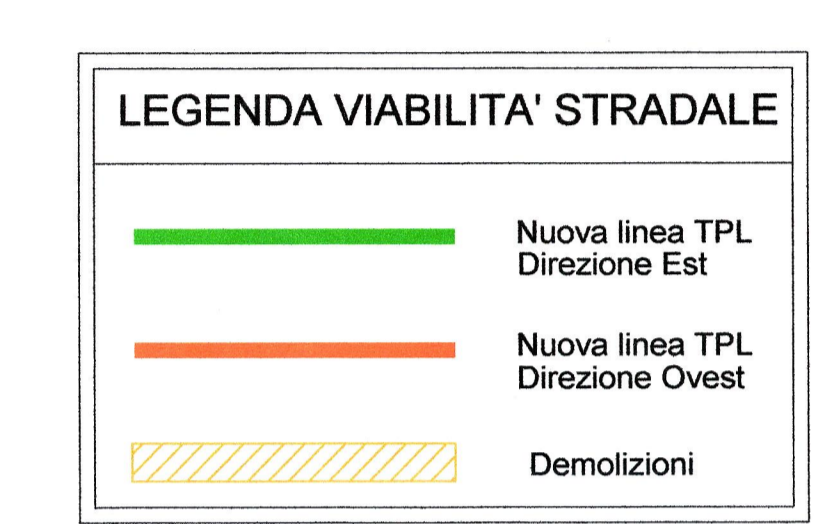
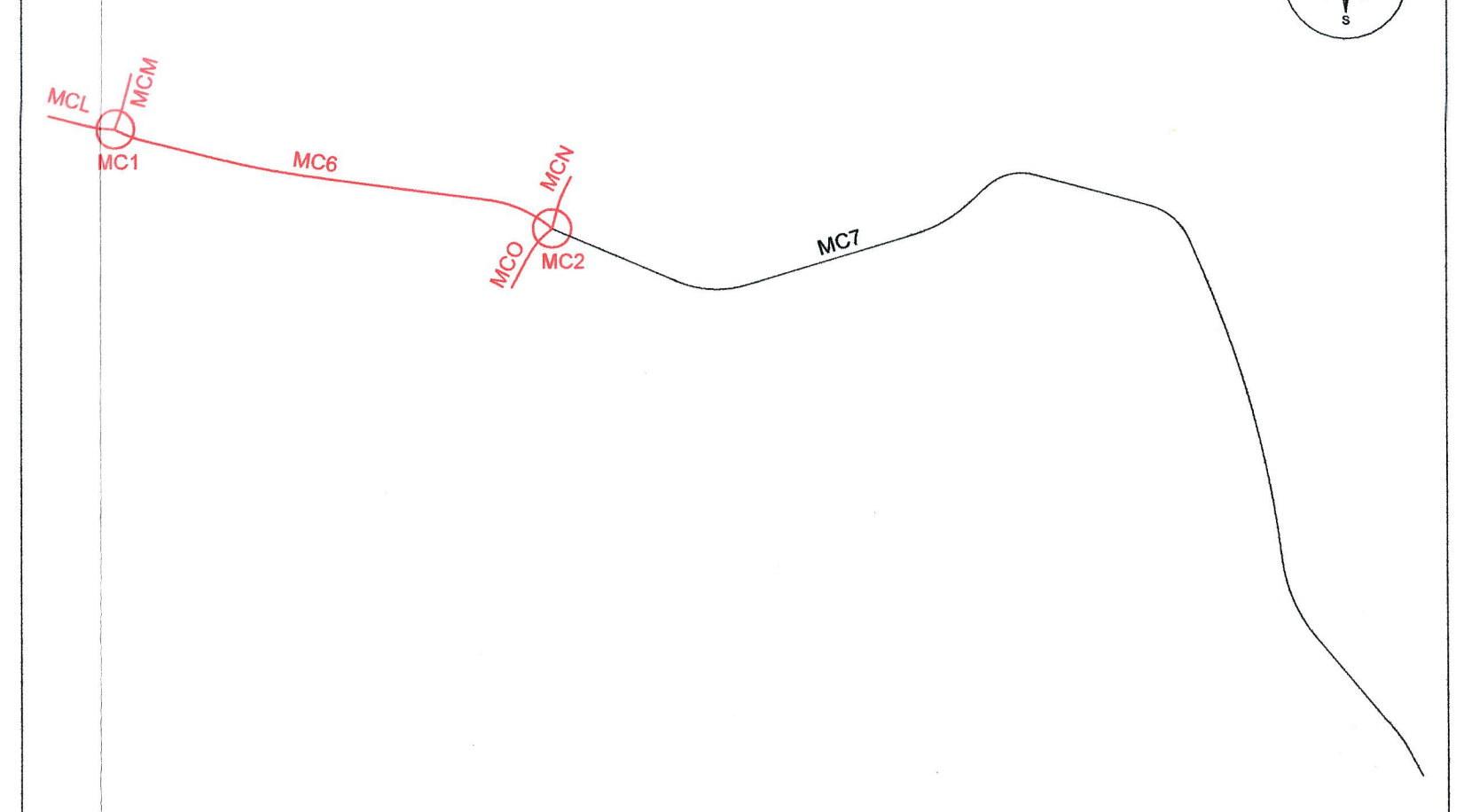


PLANIMETRIA
1 DI 2
SCALA 1:2000



PLANIMETRIA DI INQUADRAMENTO



COMMITTENTE: RFI
PROGETTAZIONE: ITALFERR
INFRASTRUTTURE FERROVIARIE STRATEGICHE DEFINITE DALLA LEGGE OBIETTIVO N.443/01
U.O. INFRASTRUTTURE CENTRO
PROGETTO PRELIMINARE
LINEA AVIAC VERONA - PADOVA
LOTTO FUNZIONALE II
ATTRaversamento DI VICENZA
PROGETTO VIABILITA' STRADALE
Planimetria di progetto, profili e sezioni tipo - Tav 1 di 2

SCALA: varie

Rev.	Descrizione	Redatto	Data	Verificato	Data	Approvato	Data	Autore/Rev. Data
A	EMISSIONE ESECUTIVA	F. Falleri	08/09/2017	M. Vizzini	08/09/2017	S. Biondi	08/09/2017	

File: IN001R11PZNV110001A In. Elabor.