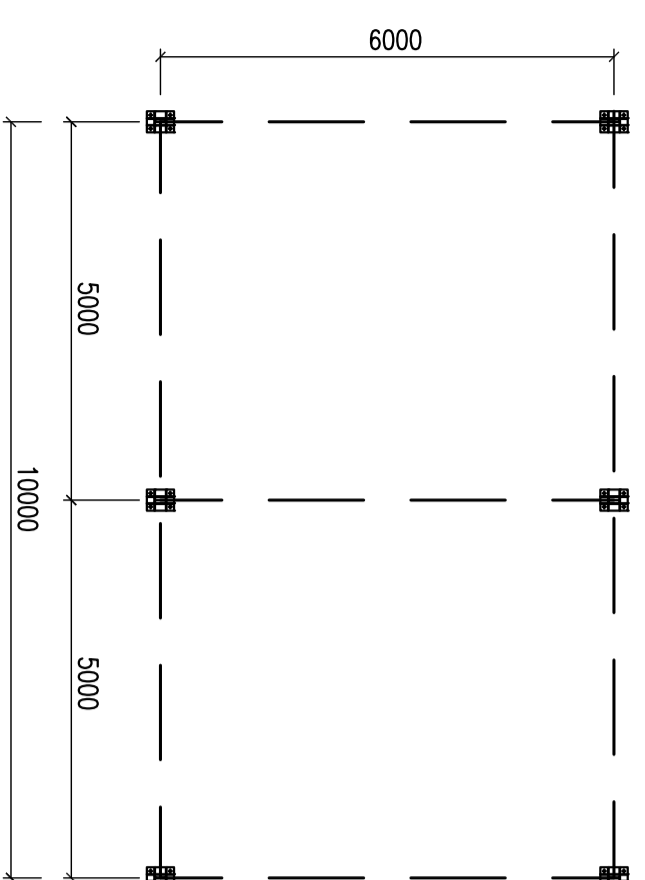
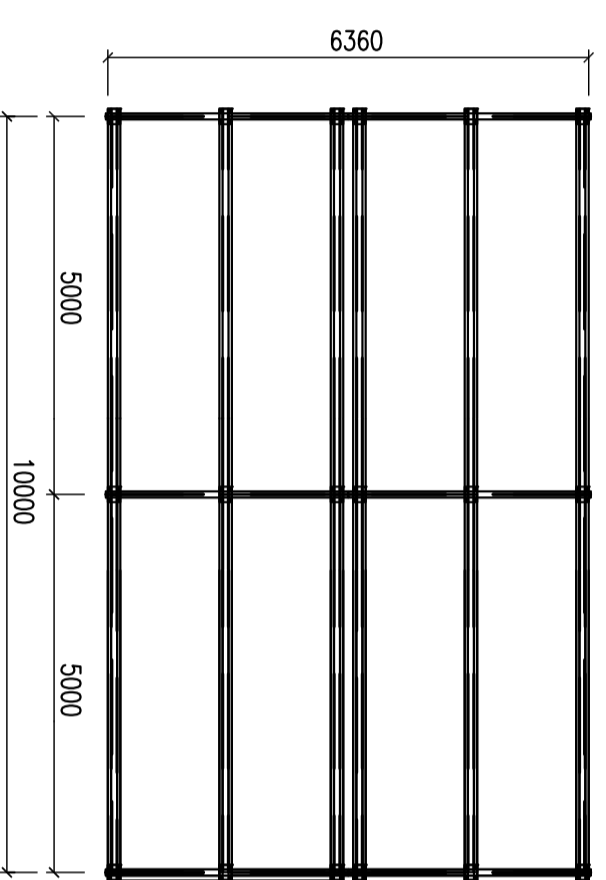


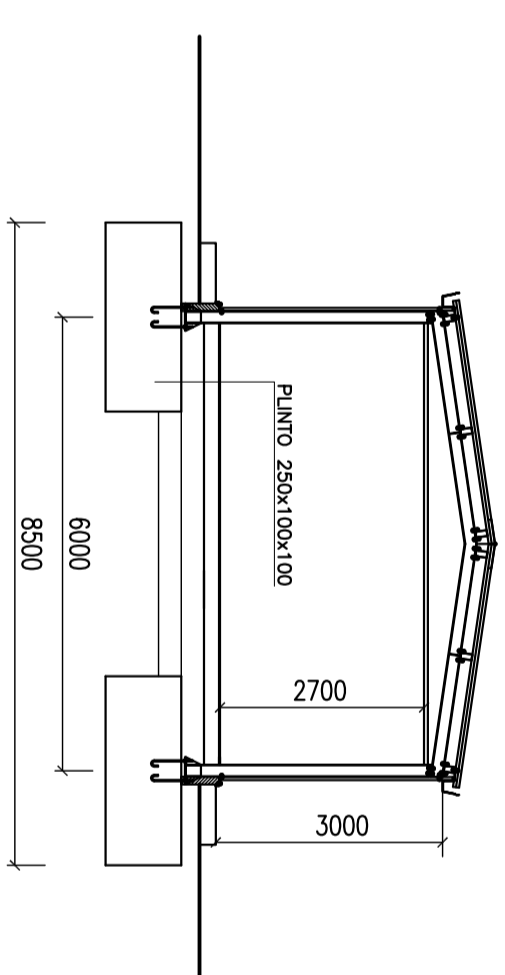
PIANTA PIASTRINI (1:100)



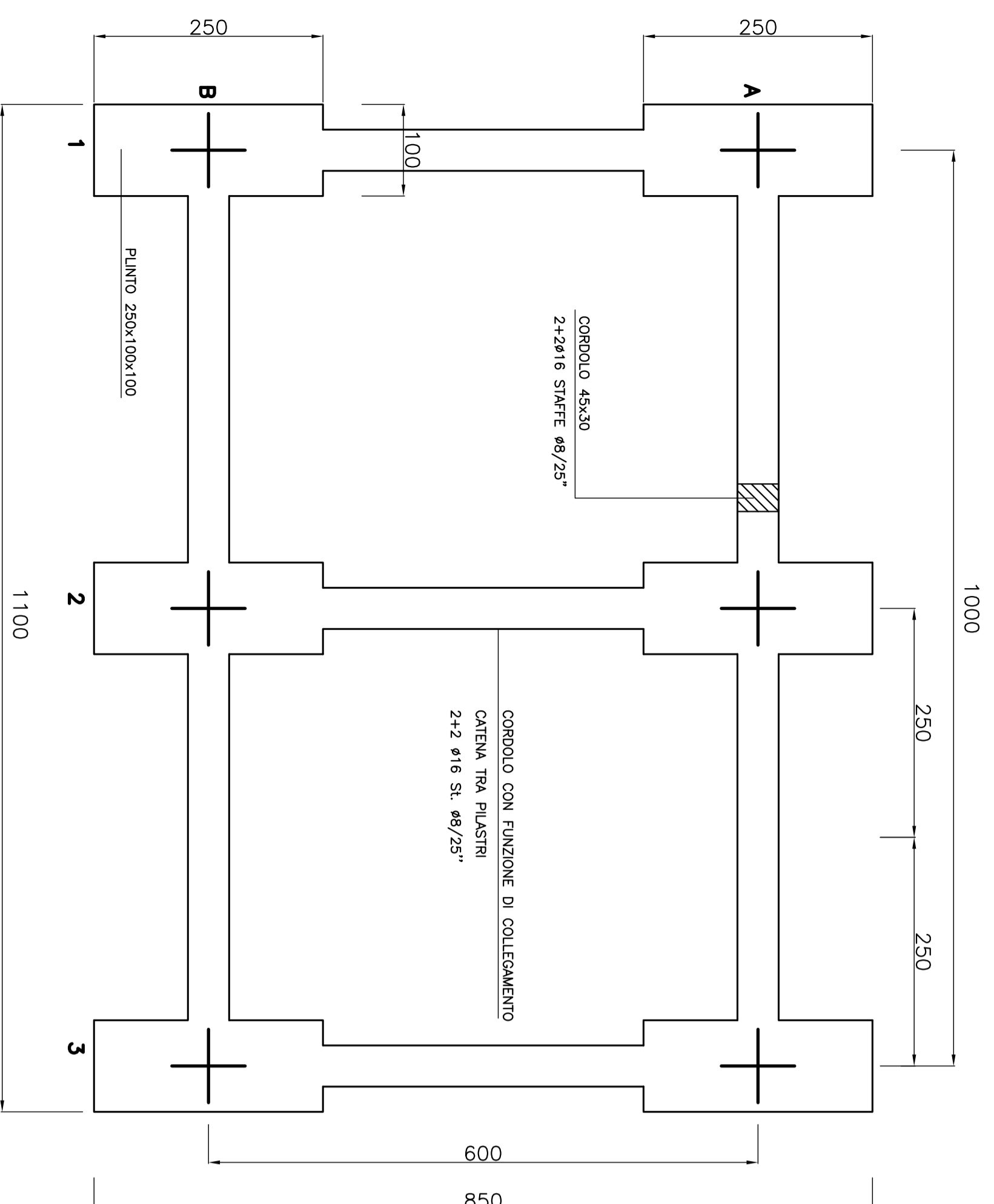
CARPENTERIA COPERTURA (1:100)



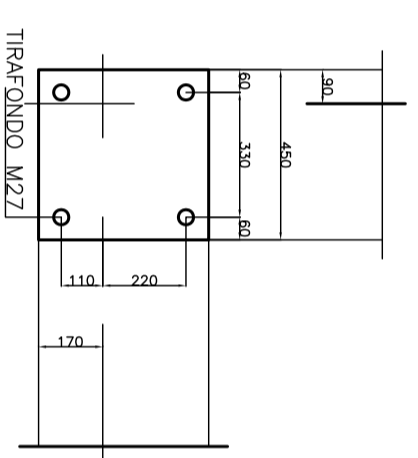
SEZIONE TRASVERSALE (1:100)



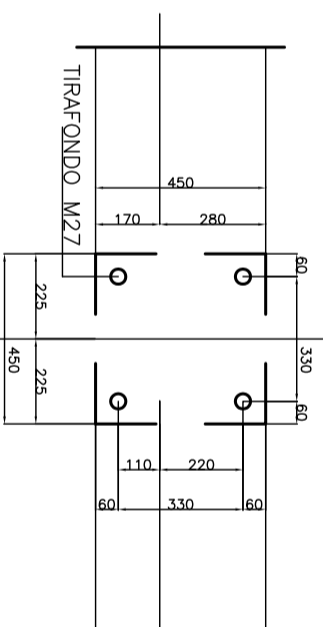
PIANTA FONDAZIONI (1:50)



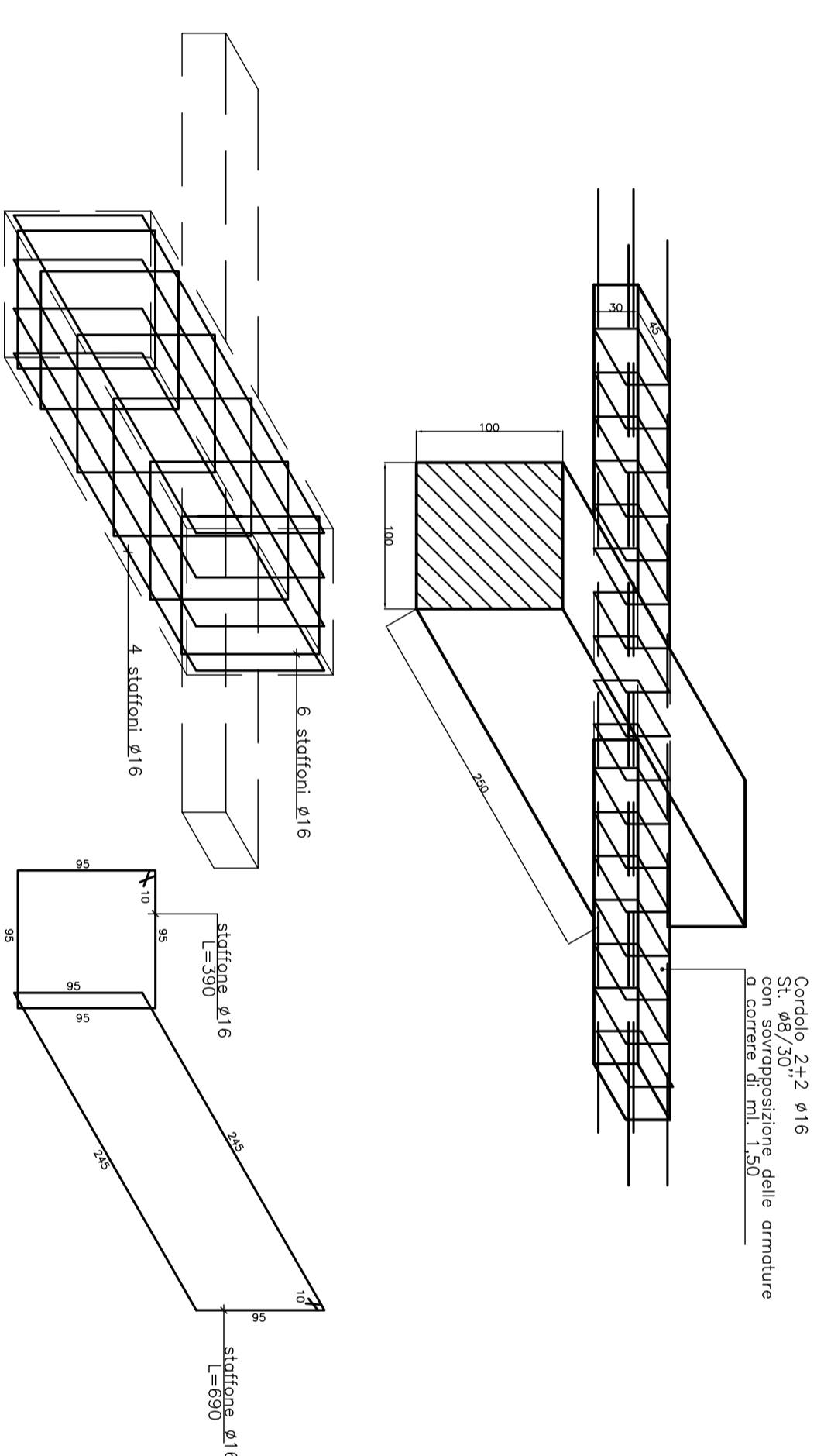
PARTIC. B1 (1:10)



PARTIC. B2 (1:10)



PART. PIANTO 250x100x100 (1:20)



**MATERIALI**

CLS C30/35  
 ACCIAIO B450C  
 MAGRONE C15/20 SPESORE: 15-20cm  
 COPRIFERRO MINIMO 3CM  
 TIRAFONDI: VITE CLASSE 8.8 - DADO 6S  
 ACCIAIO PER CARPENTERIE: Fe 360  
 INCIDENZA FERRO: 150 Kg/mc.

COMMITTENTE:



ALTA SORVEGLIANZA:



GENERAL CONTRACTOR:



INFRASTRUTTURE FERROVIARIE STRATEGICHE DEFINITE DALLA  
 LEGGE OBIETTIVO N.443/01  
 TRATTA A.V./A.C. TERZO VALICO DEI GIOVI  
 PROGETTO ESECUTIVO

CA 26 - CANTIERE OPERATIVO GERBIDI COP10

PREFABBRICATO USO MAGAZZINO:  
 CARPENTERIA E ARMATURA FONDAZIONI

GENERAL CONTRACTOR	DIRETTORE LAVORI	SCALA:
Consorzio <b>COCIV</b> Ing. N. Maffei		VARIE

PROGETTAZIONE:

Rev.	Descrizione emissione	Redatto	Data	Verificato	Data	Progettista	Data	Il. EBA.	PROG.	REV.
A00	Prima Emissione	COCIV	03/11/2014	COCIV	03/11/2014	A. Pukonia	03/11/2014		001	0
B00	Revisione generale spollamento area	Indagoluzi	31/07/2017	COCIV	31/07/2017	A. Maffei	31/07/2017		002	1