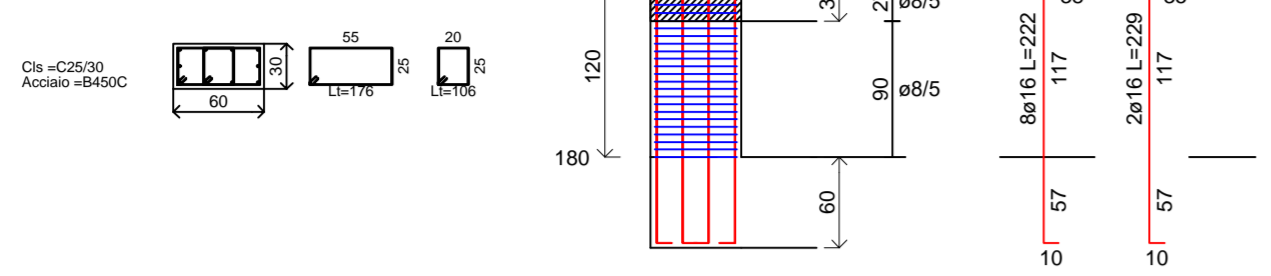
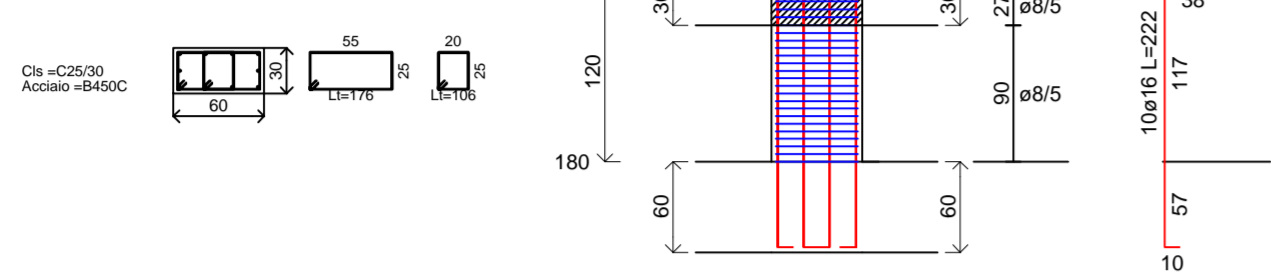


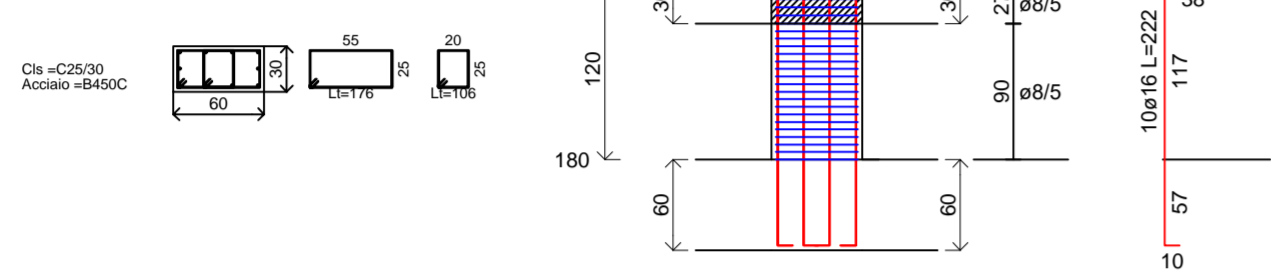
Pilastrata 1



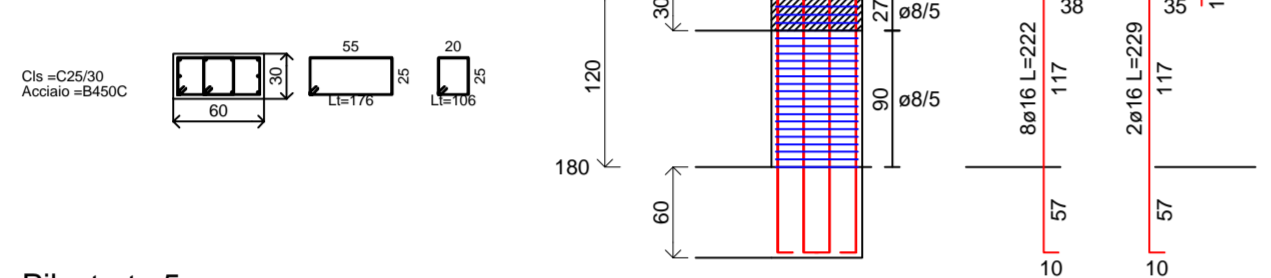
Pilastrata 2



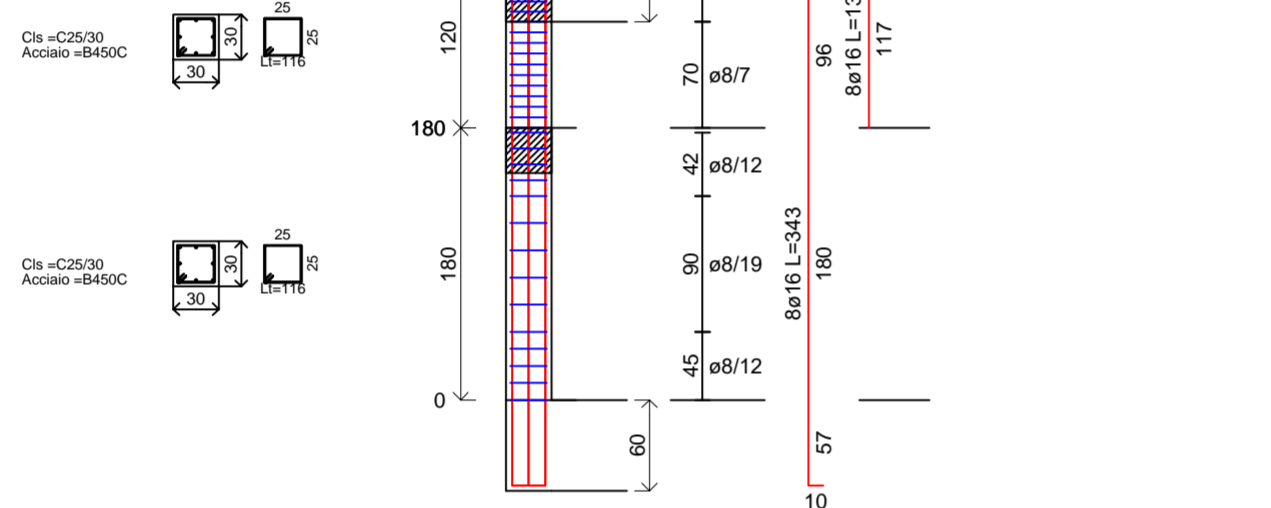
Pilastrata 3



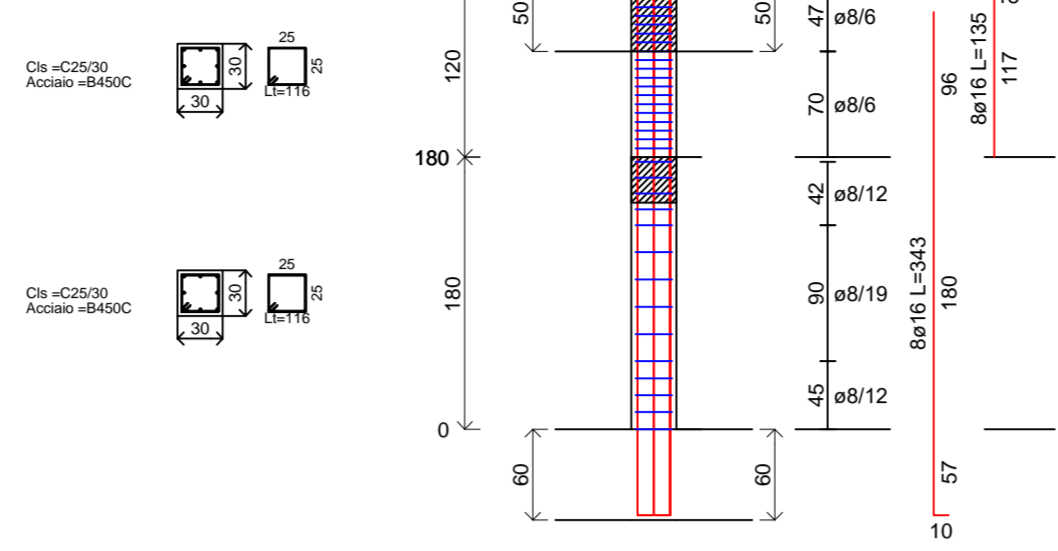
Pilastrata 4



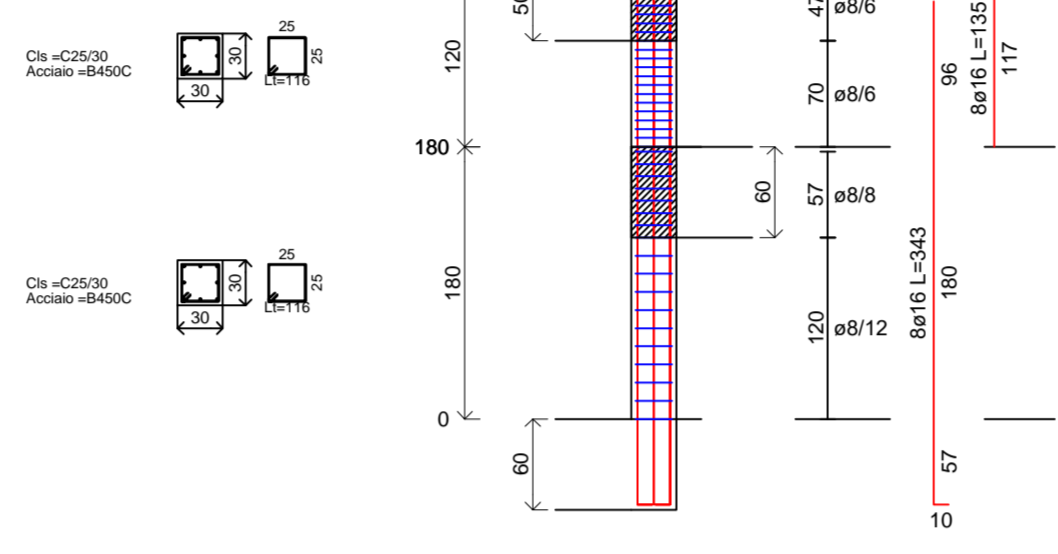
Pilastrata 5



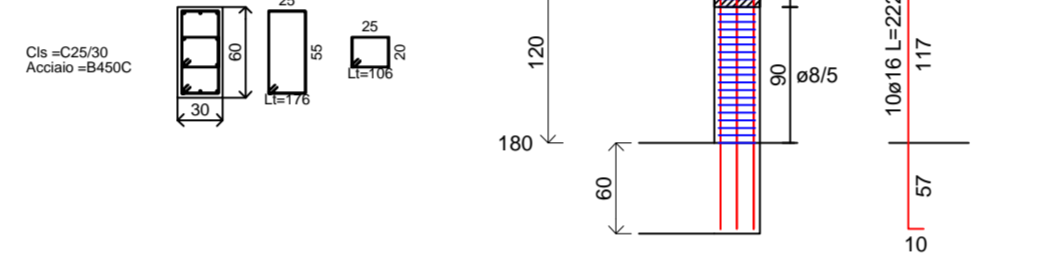
Pilastrata 6



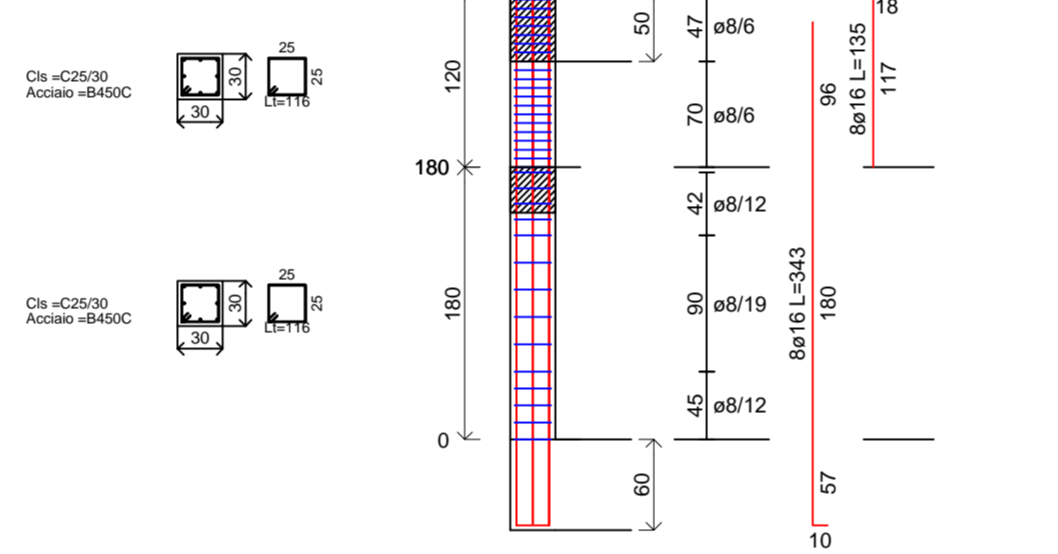
Pilastrata 7



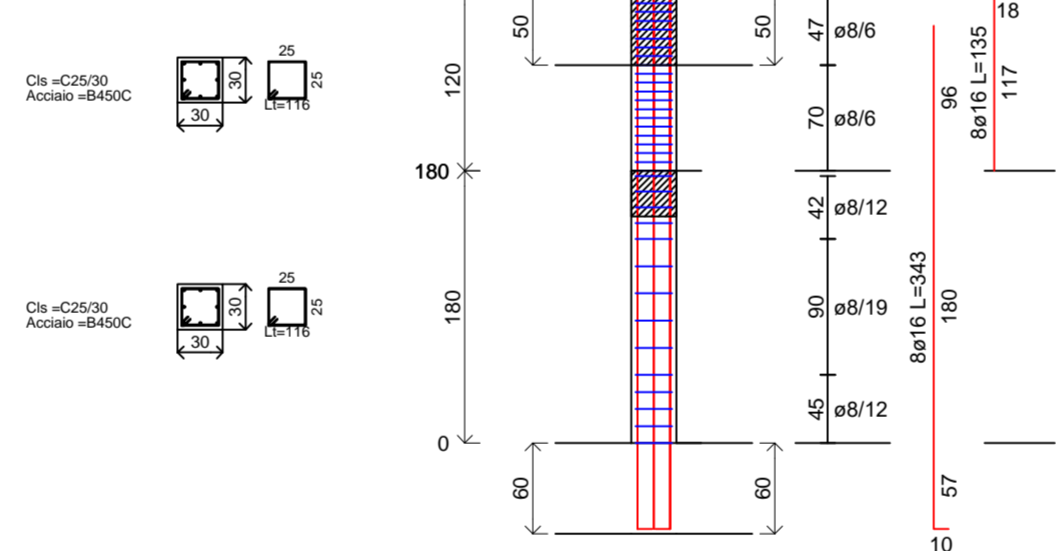
Pilastrata 8



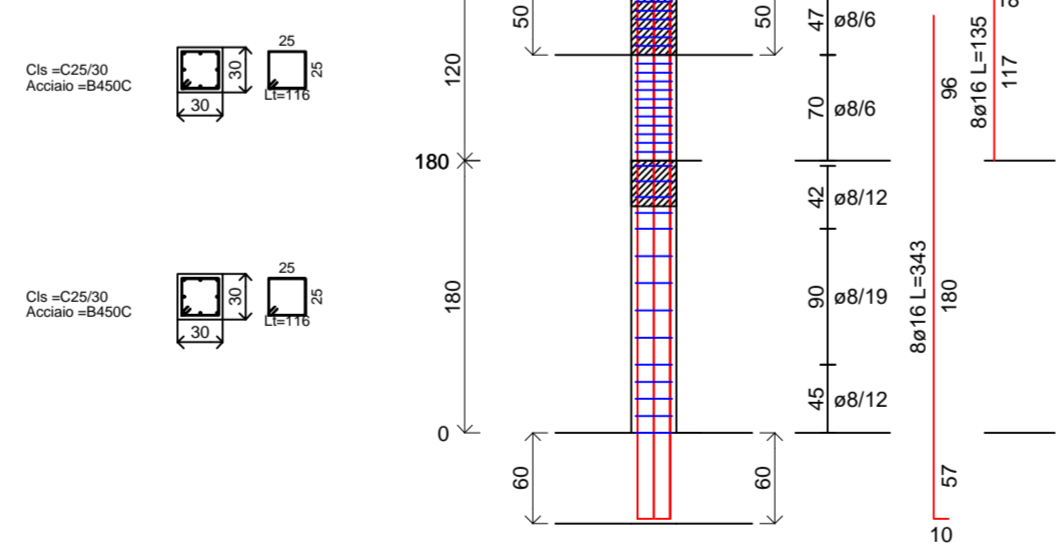
Pilastrata 9



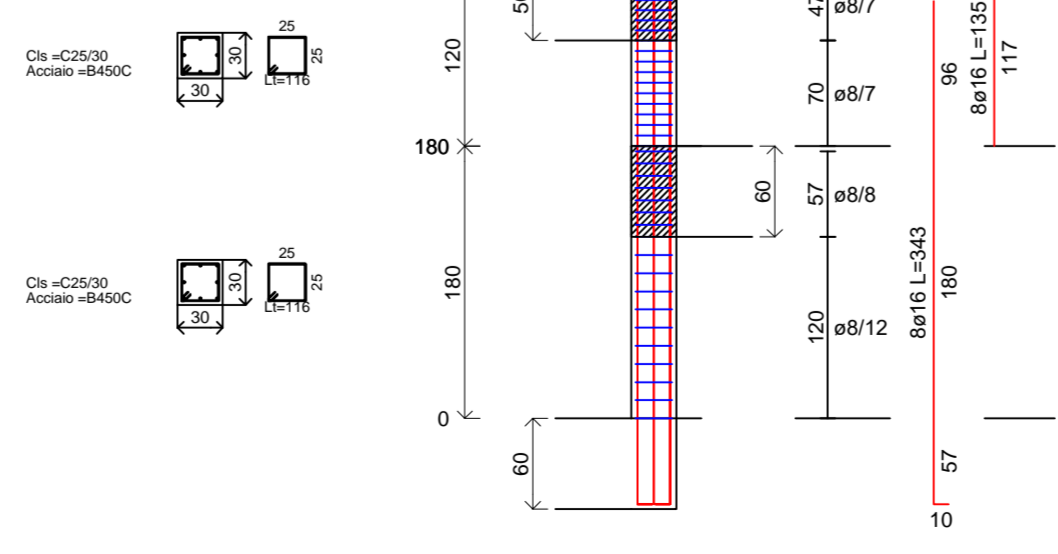
Pilastrata 10



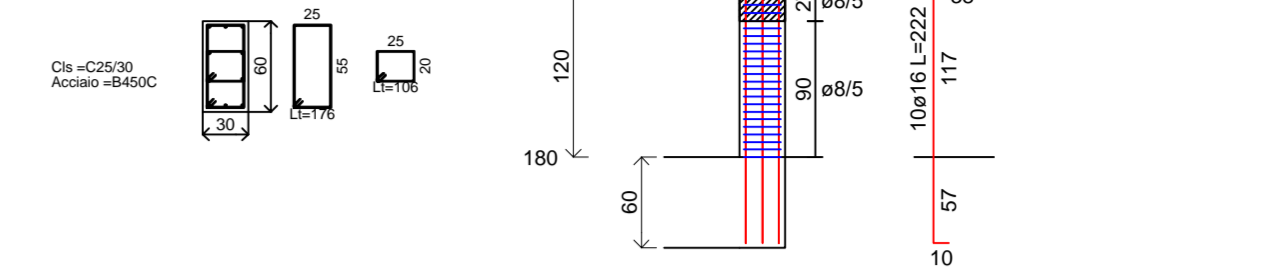
Pilastrata 11



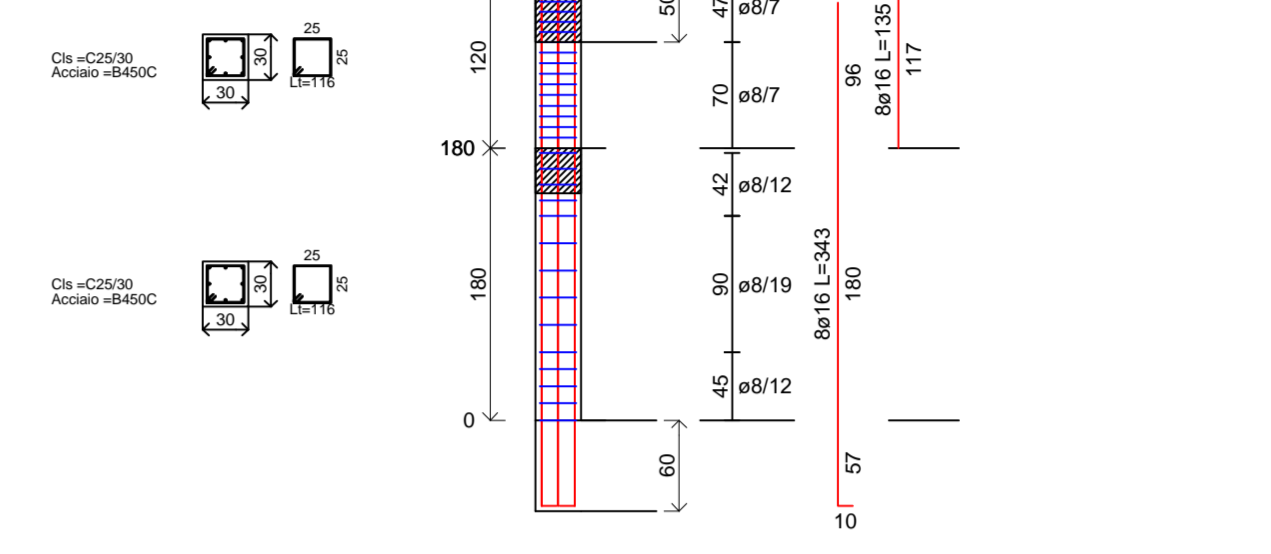
Pilastrata 12



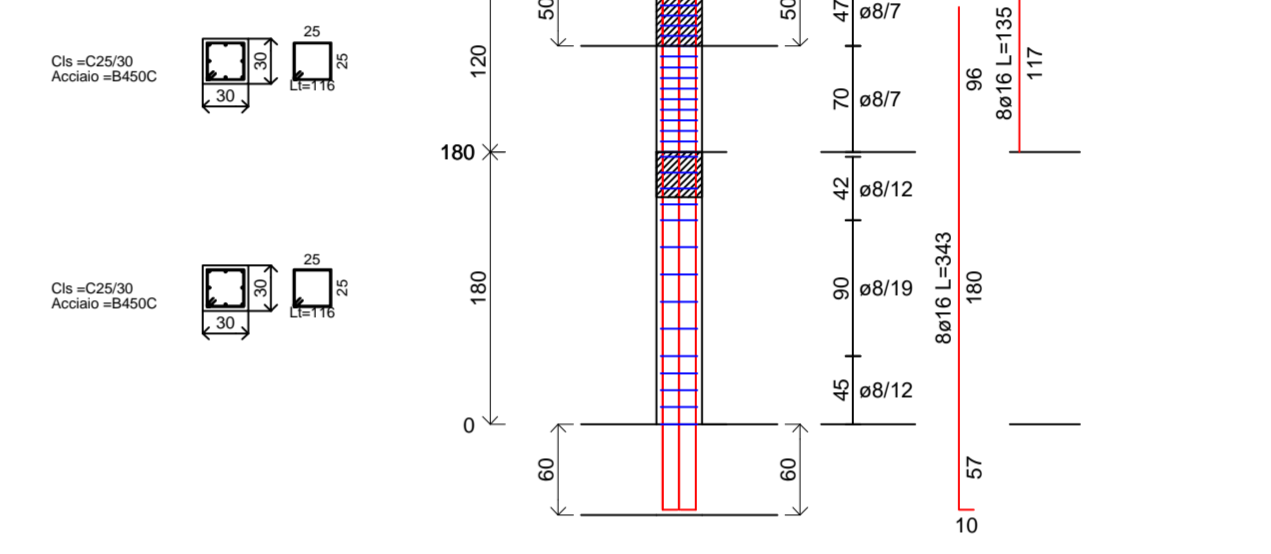
Pilastrata 13



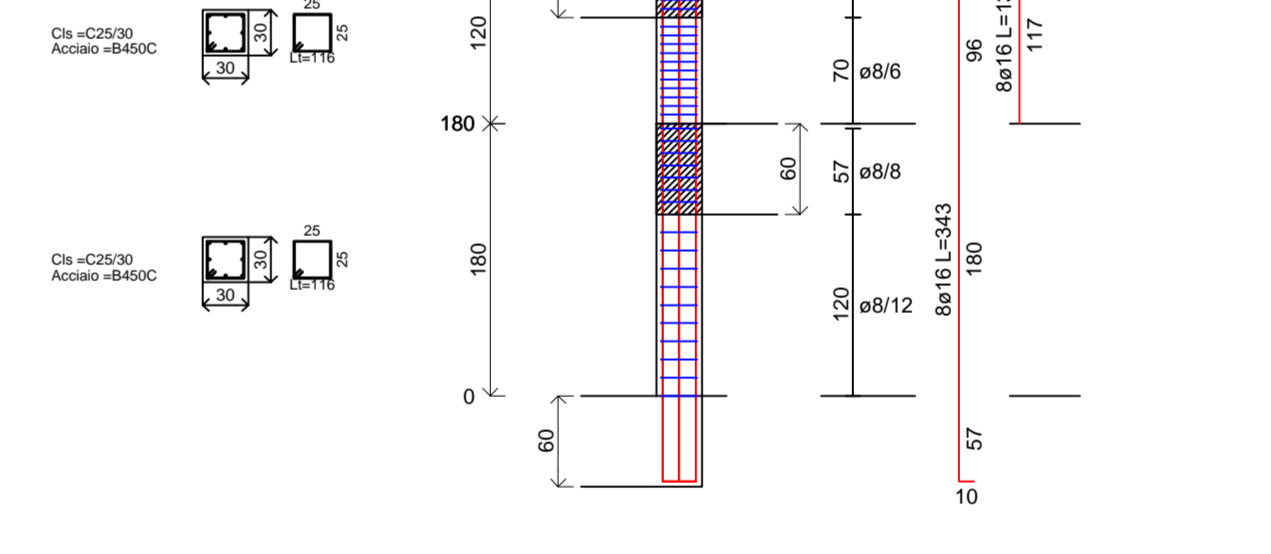
Pilastrata 14



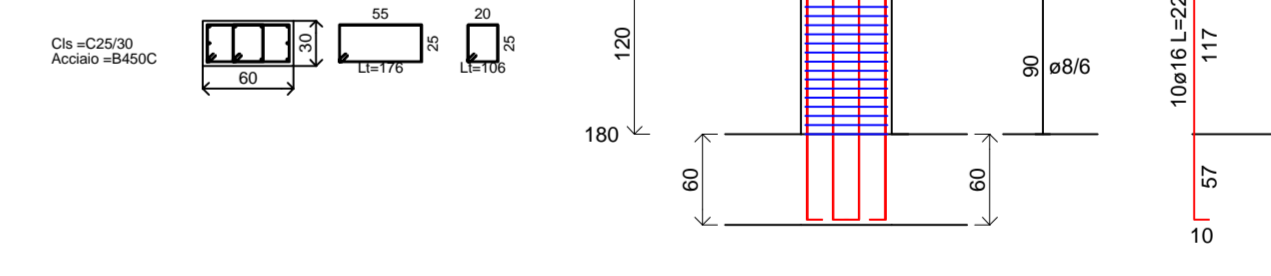
Pilastrata 15



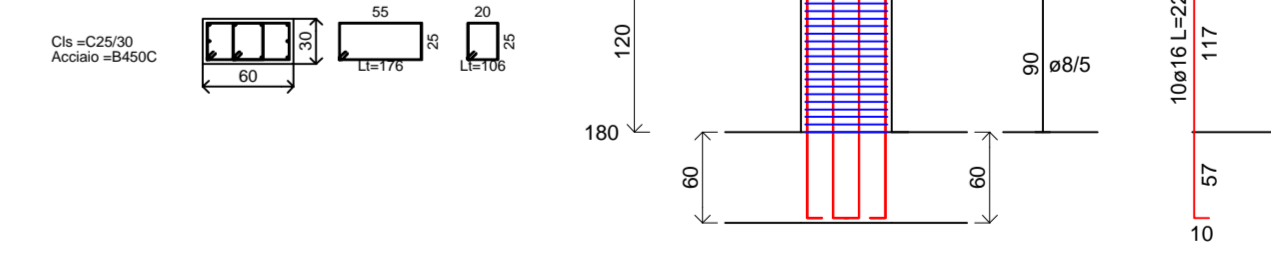
Pilastrata 16



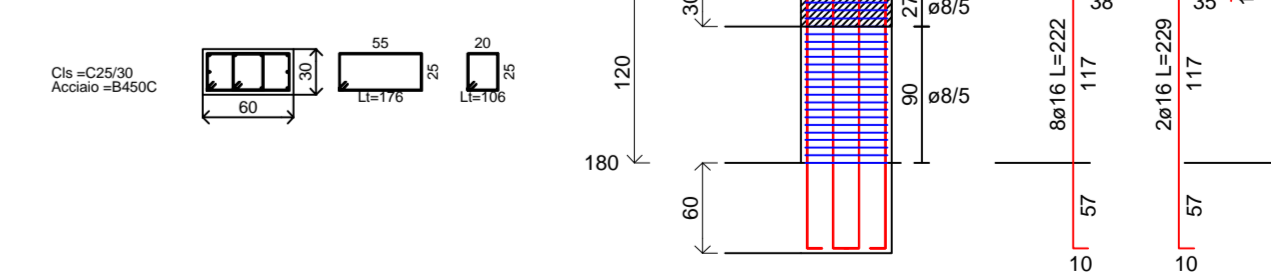
Pilastrata 17



Pilastrata 18



Pilastrata 19



Stazione Appaltante
Regione Siciliana
Comune di S. Stefano di Camastra
Provincia di Messina



Procedura aperta ex art. 183 commi 1-14 d.lgs. 50/2016 s.m.i. per l'affidamento in project financing della concessione di lavori pubblici avente per oggetto la progettazione definitiva ed esecutiva, l'esecuzione dei lavori per la REALIZZAZIONE DEL PORTO TURISTICO E DELLE OPERE CONNESSE NEL COMUNE DI SANTO STEFANO DI CAMASTRA nonché della loro gestione economico-finanziaria C.I.G.67535662F8 C.U.P.H21H07000030003

PROGETTO DEFINITIVO

Concessionario Individuato



Rappresentante legale: Cono Bruno

Via Campidoglio, 70 98076 Sant'Agata di Militello (ME)

Titolo elaborato

PISCINA

PILASTRATE
- CARPENTERIE
- ESECUTIVI DI CANTIERE

Progettista indicato



Dott. Ing. Paolo Turbolente

Via Ajaccio, 14
00198 Roma



Amministratore Unico:
Prof. Ing. Vincenzo Cataliotti
Direttori tecnici:
Arch. Sebastiano Provenzano
Prof. Ing. Antonio Cataliotti
Via Vittorio Emanuele, 492
90134 Palermo

Elaborato PD EG

4.4.P - P

Scala

Data: Giugno 2017