

CARATTERISTICHE DEI MATERIALI

- Calcestruzzo cemento classe C 25/30
- Acciaio B450C (391 N/mm²)

Prescrizioni per le Travi Reticolare tipo S.E.R.*

Le travi in fase di getto vanno puntellate in maniera idonea a sostenere il peso. Imporre il copriferro minimo per le travi maggiormente caricate.

Nota per pilastri e pareti

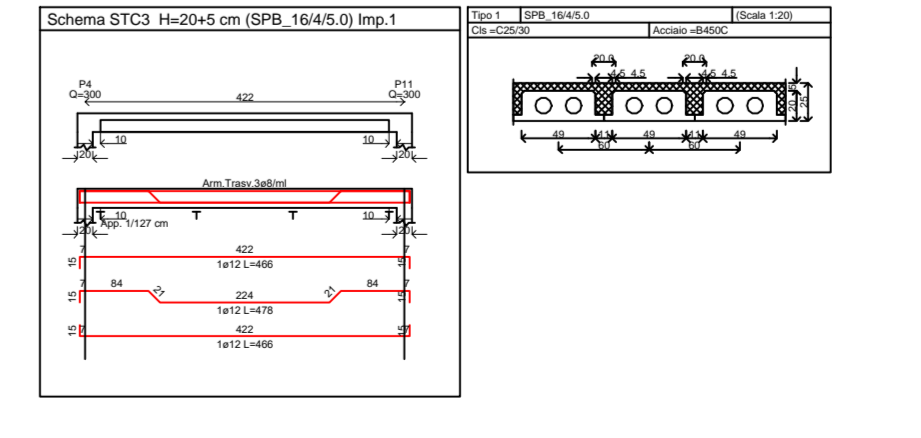
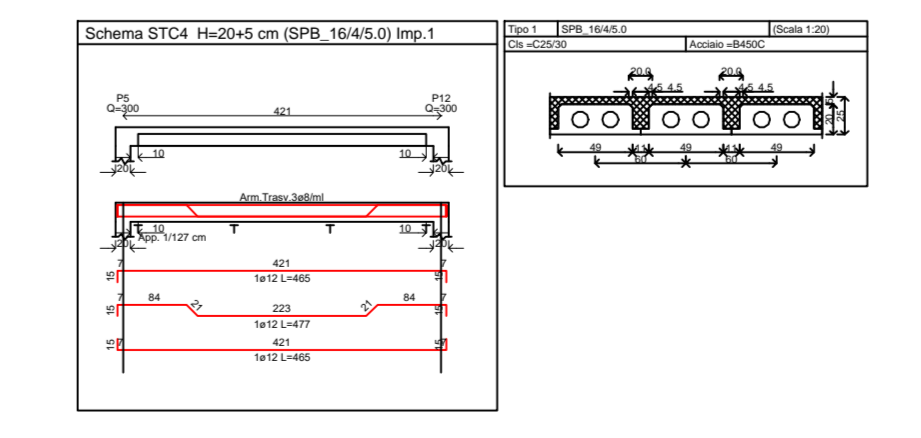
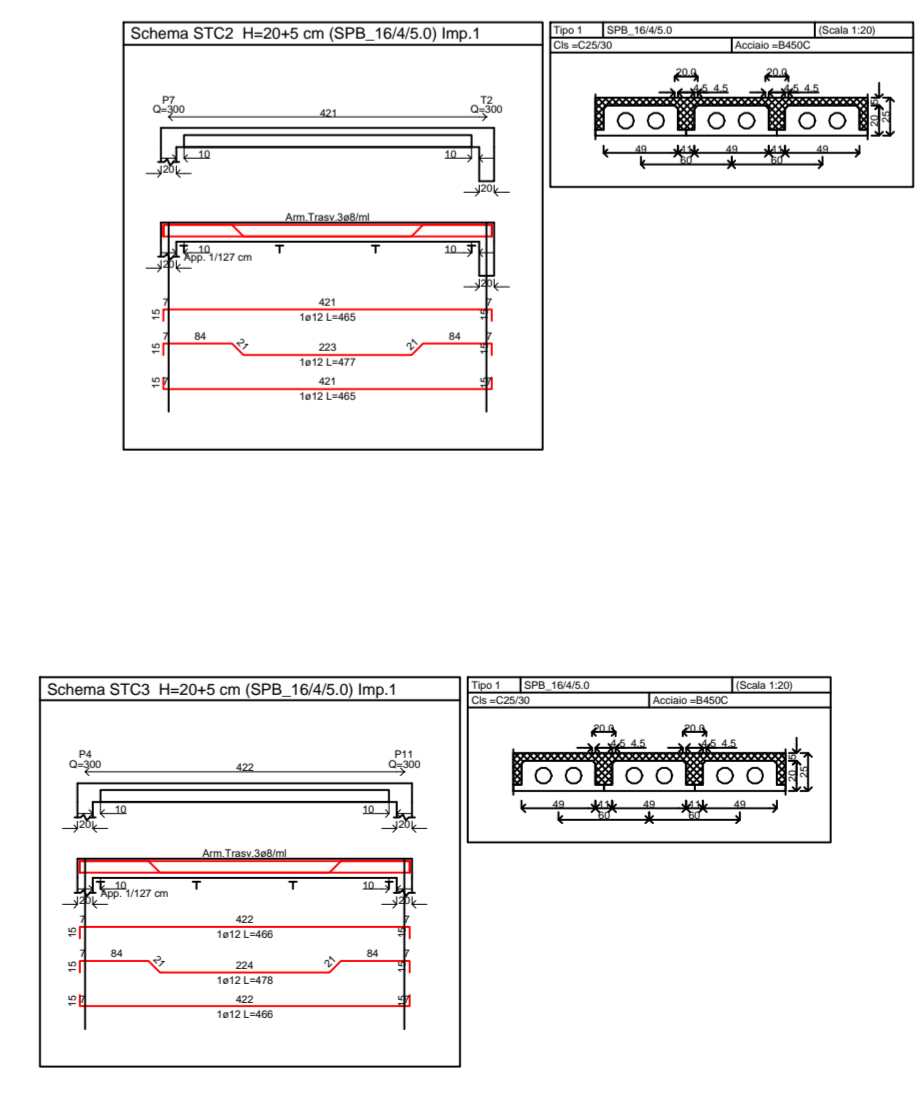
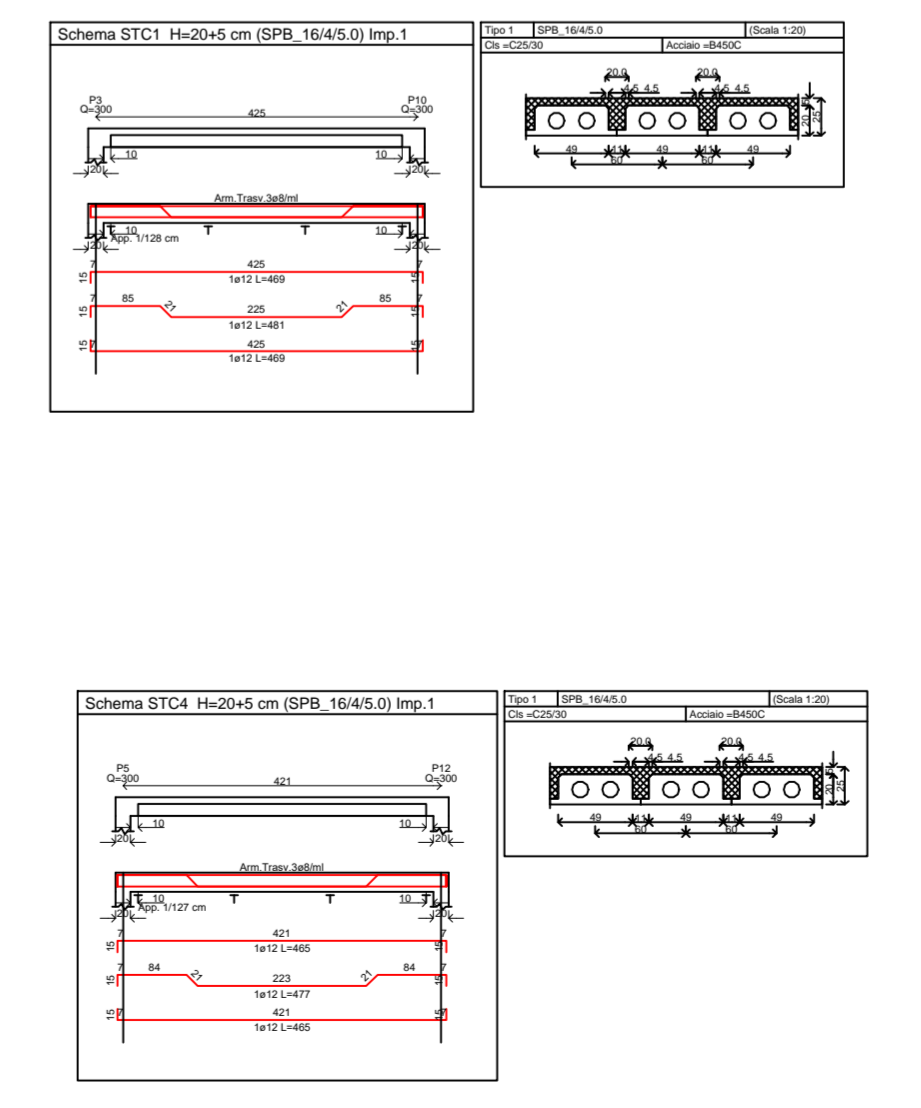
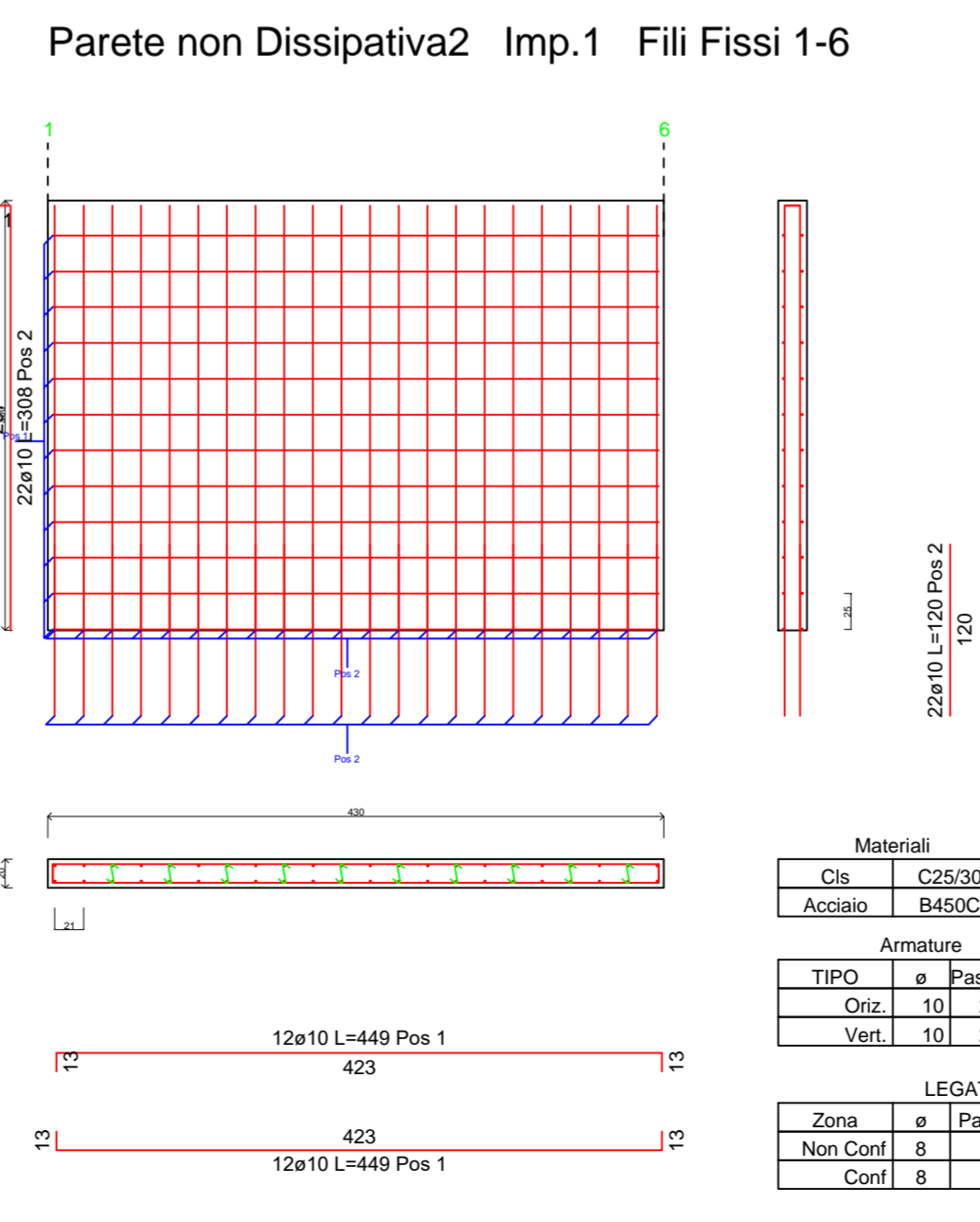
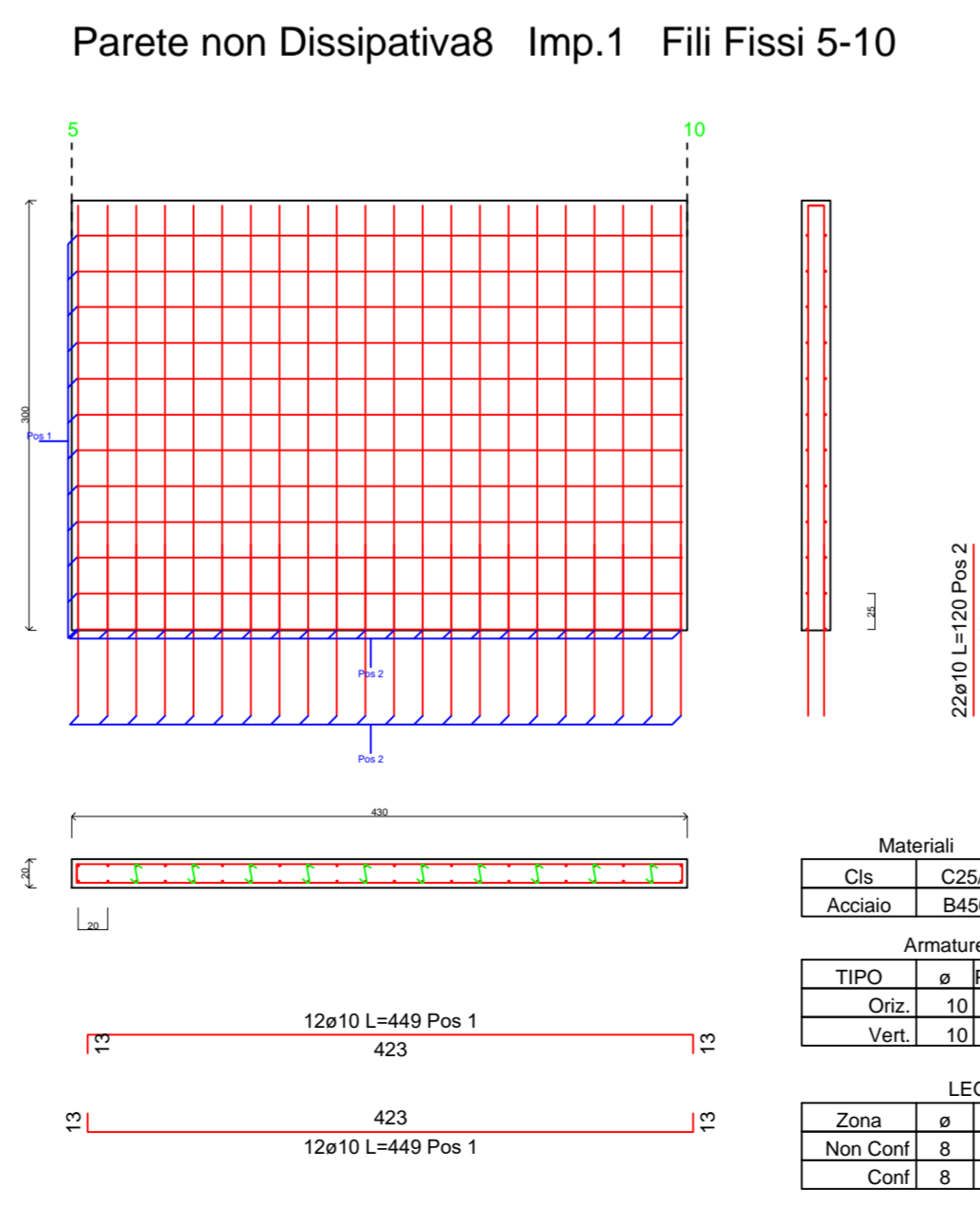
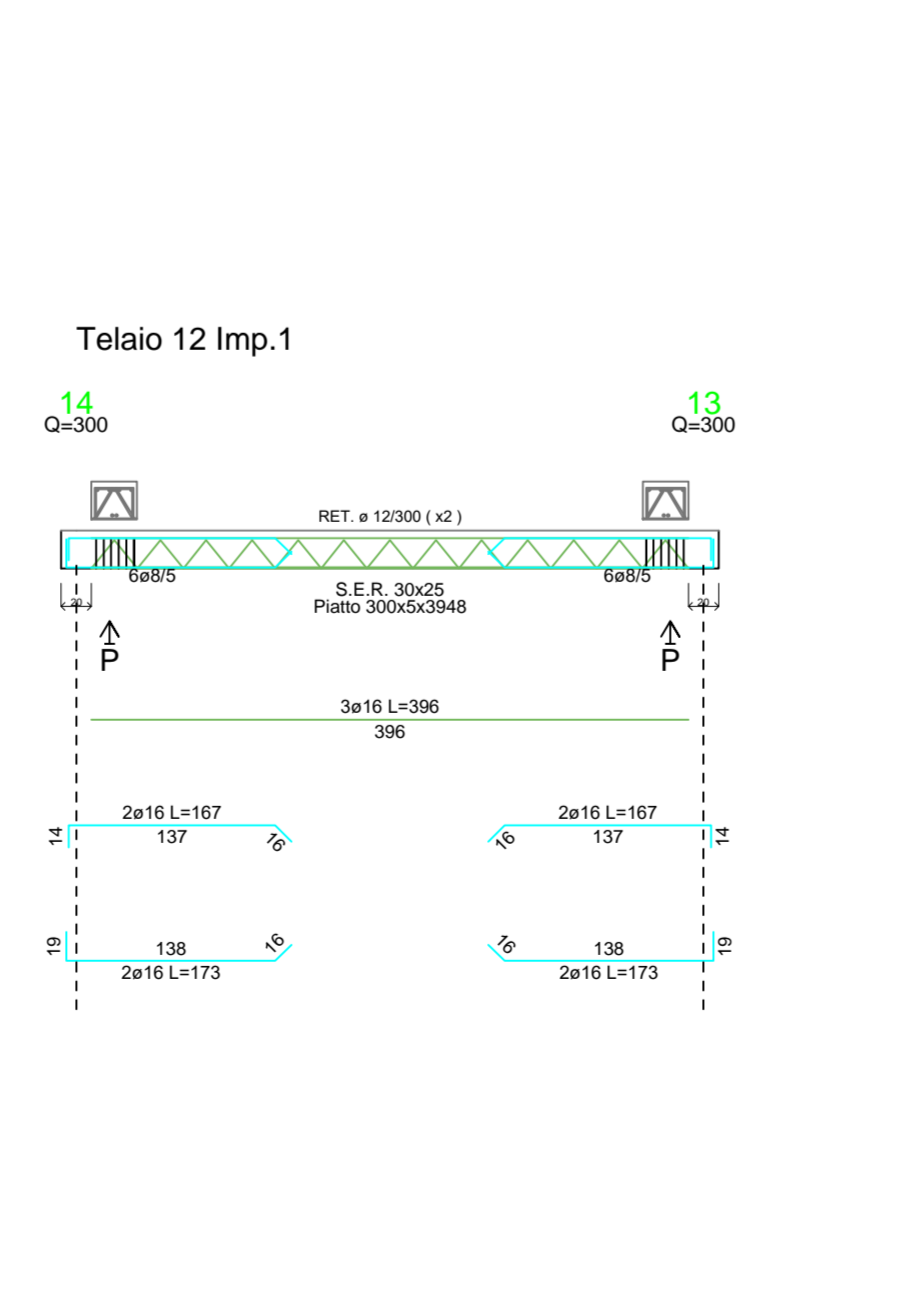
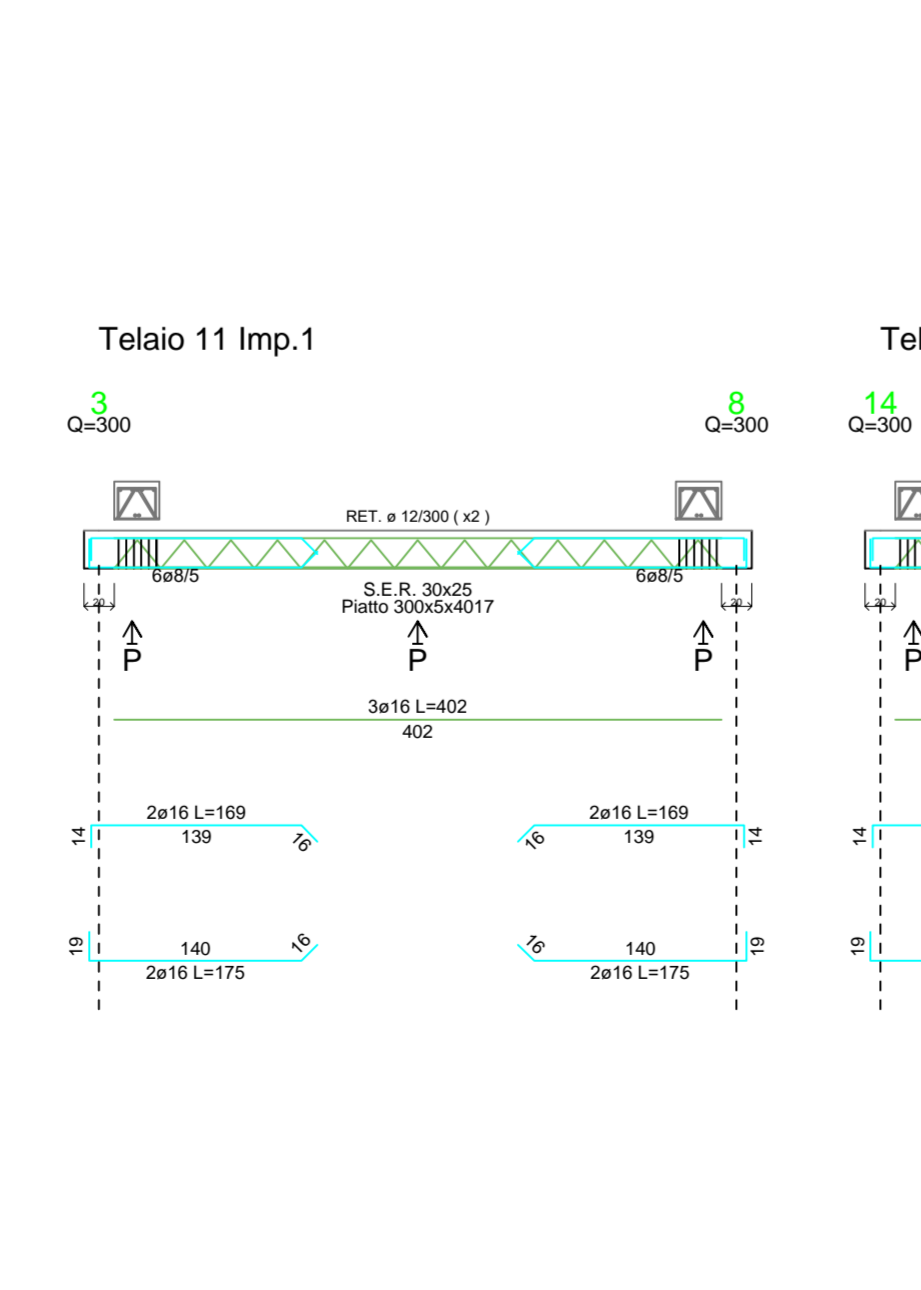
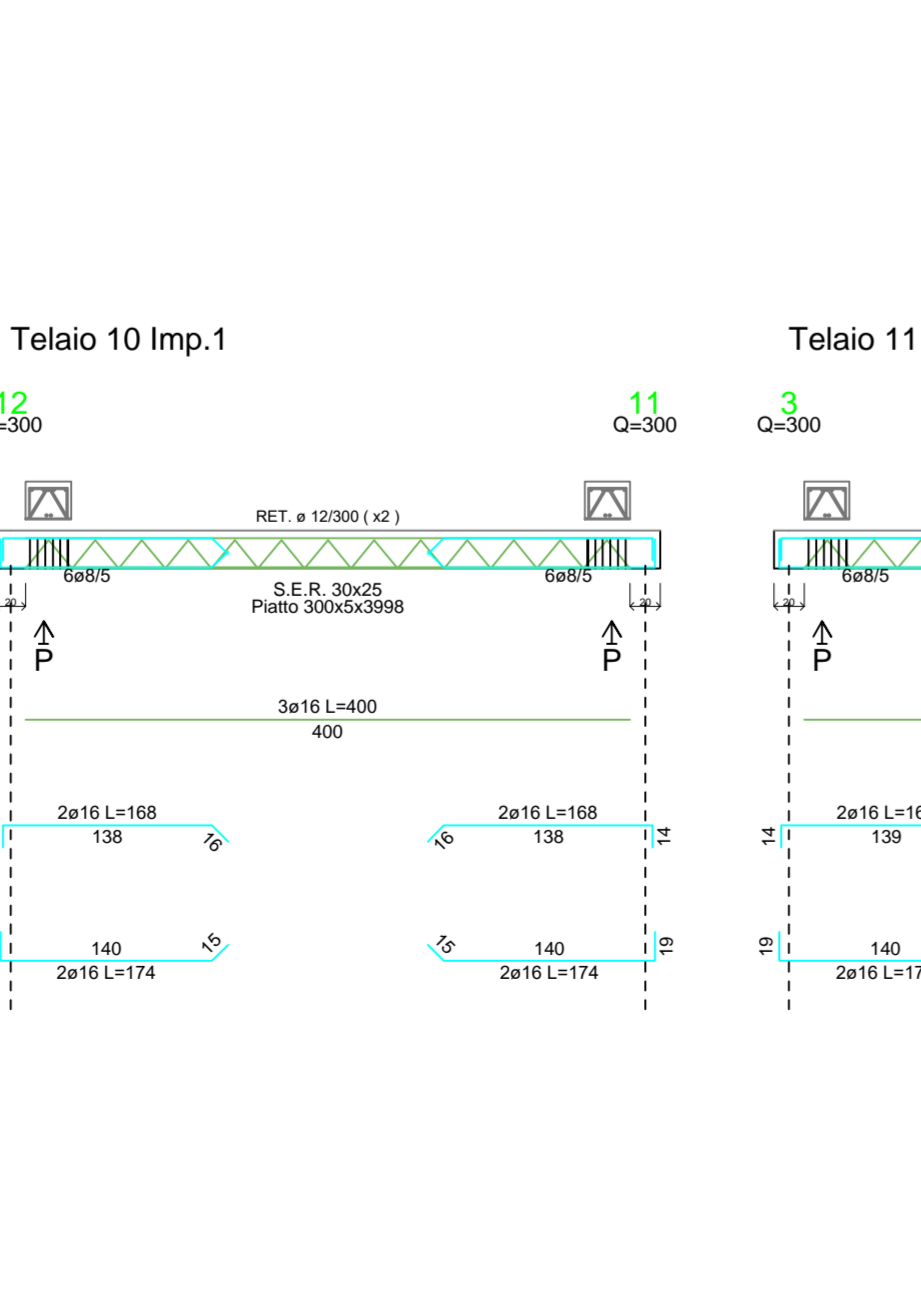
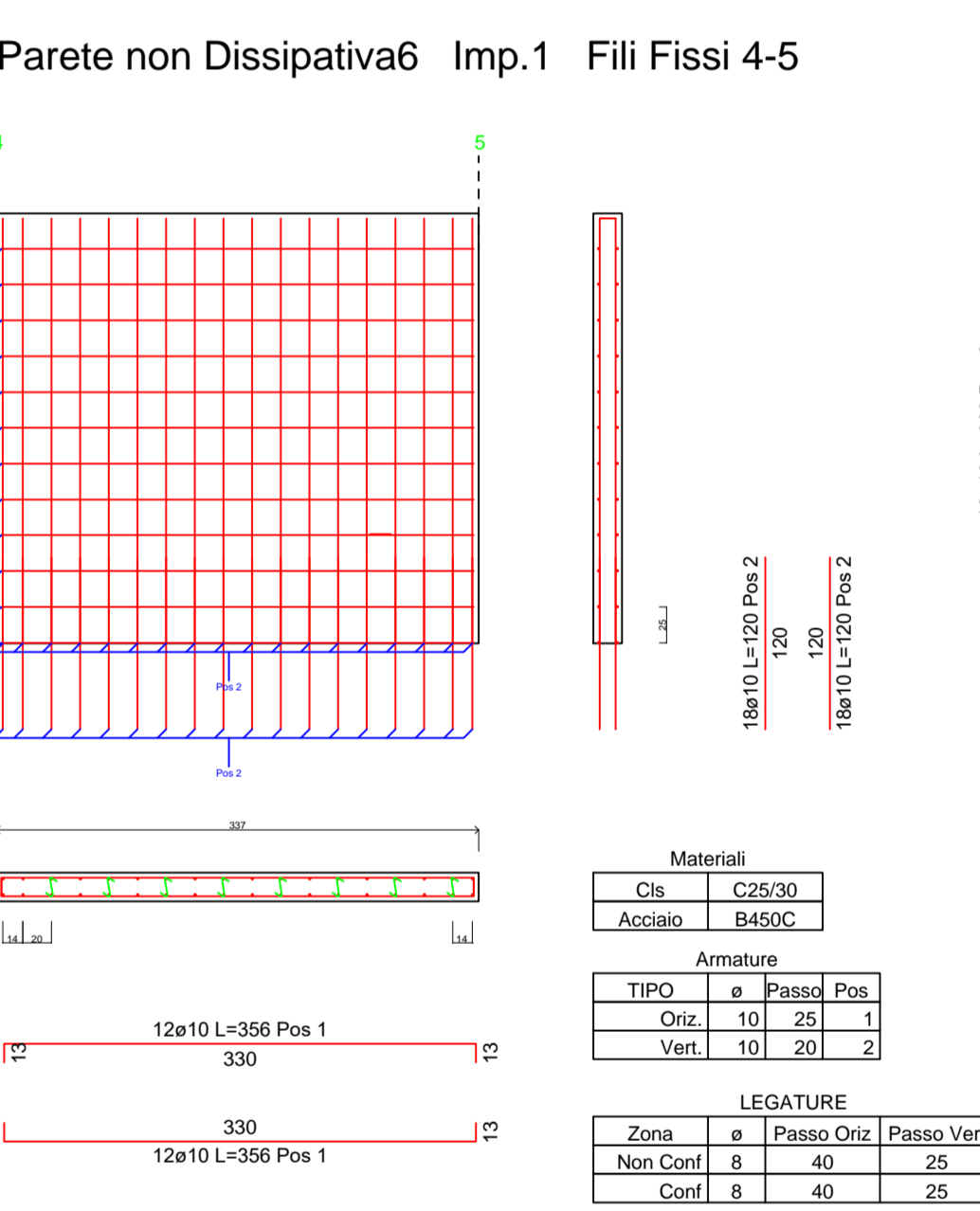
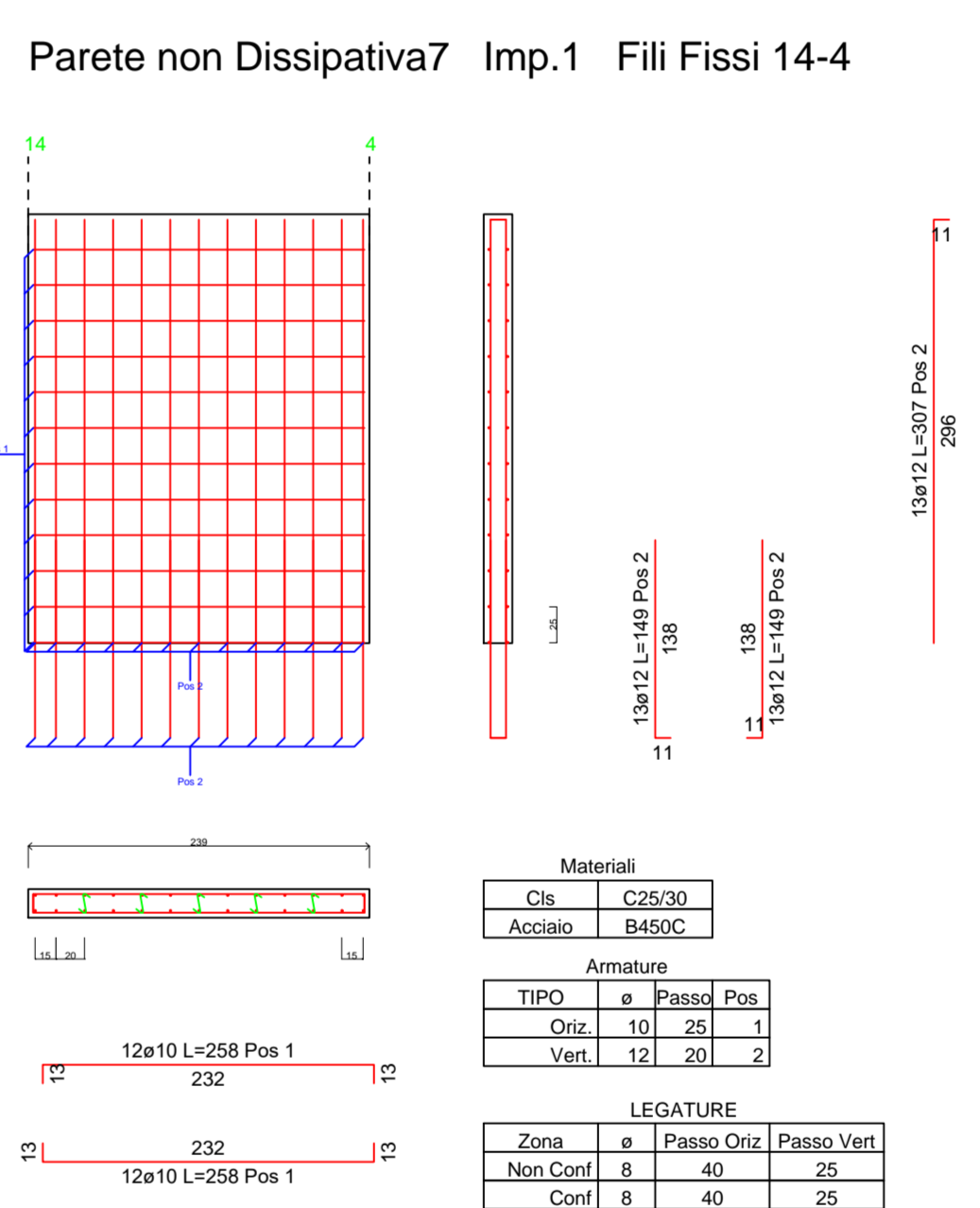
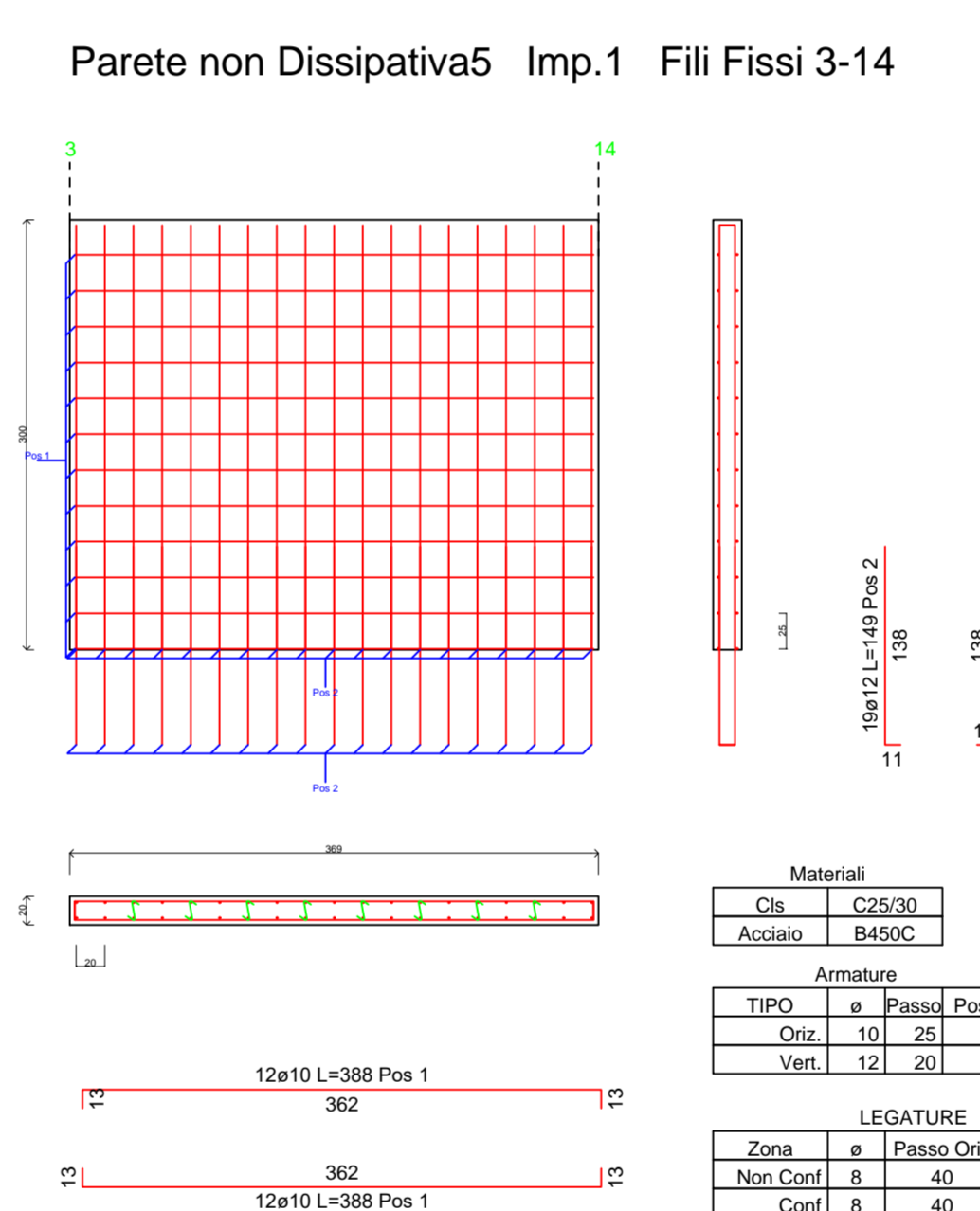
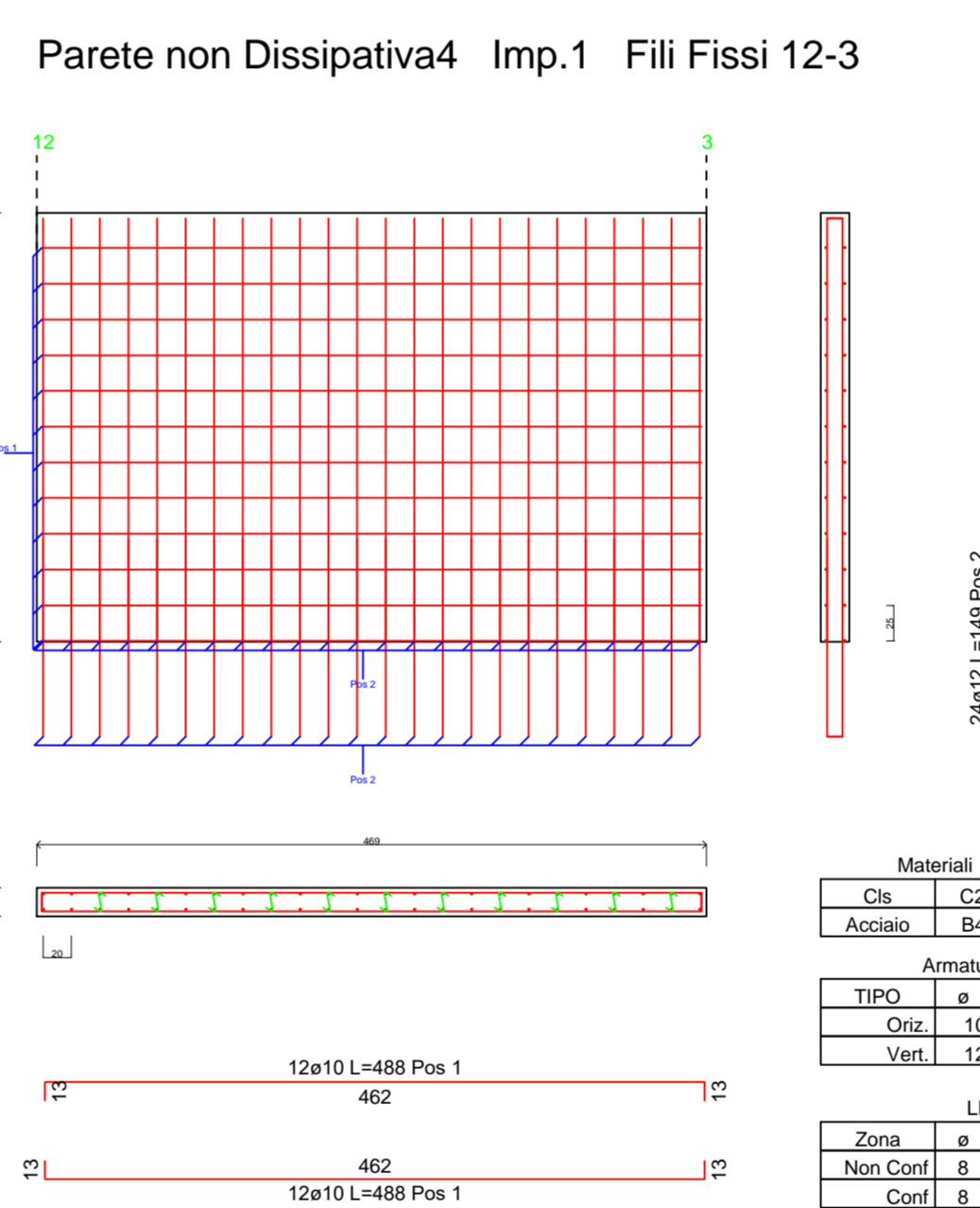
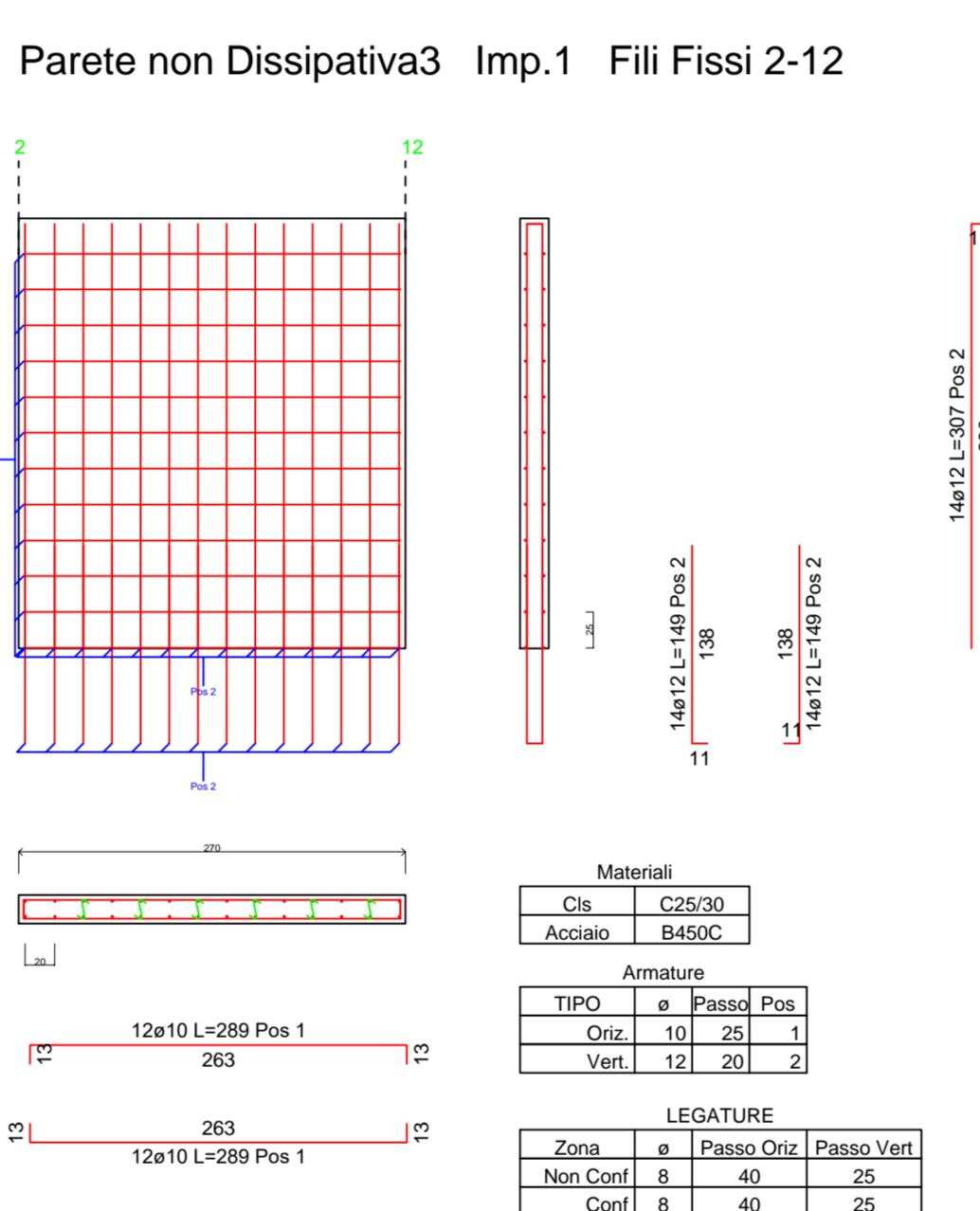
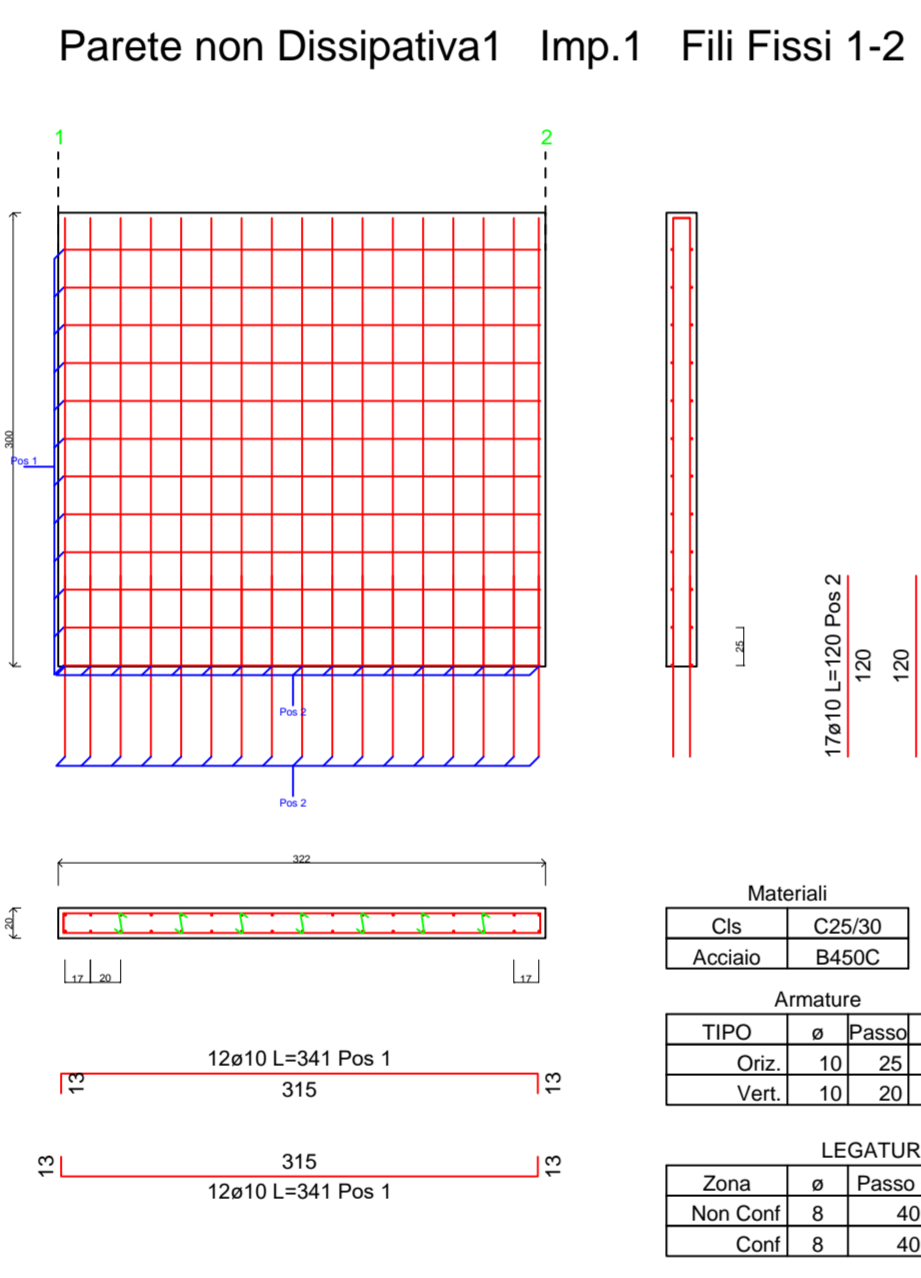
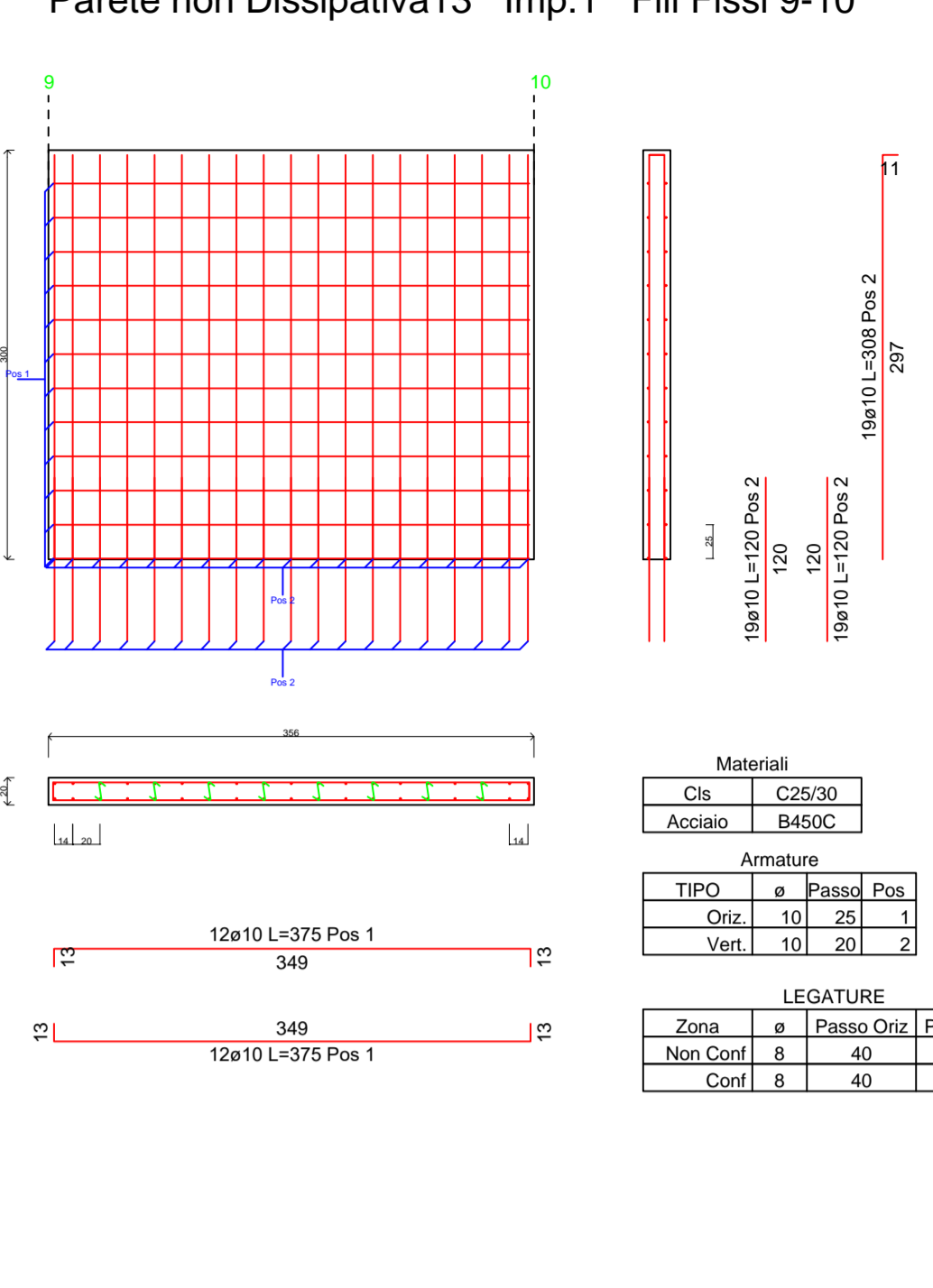
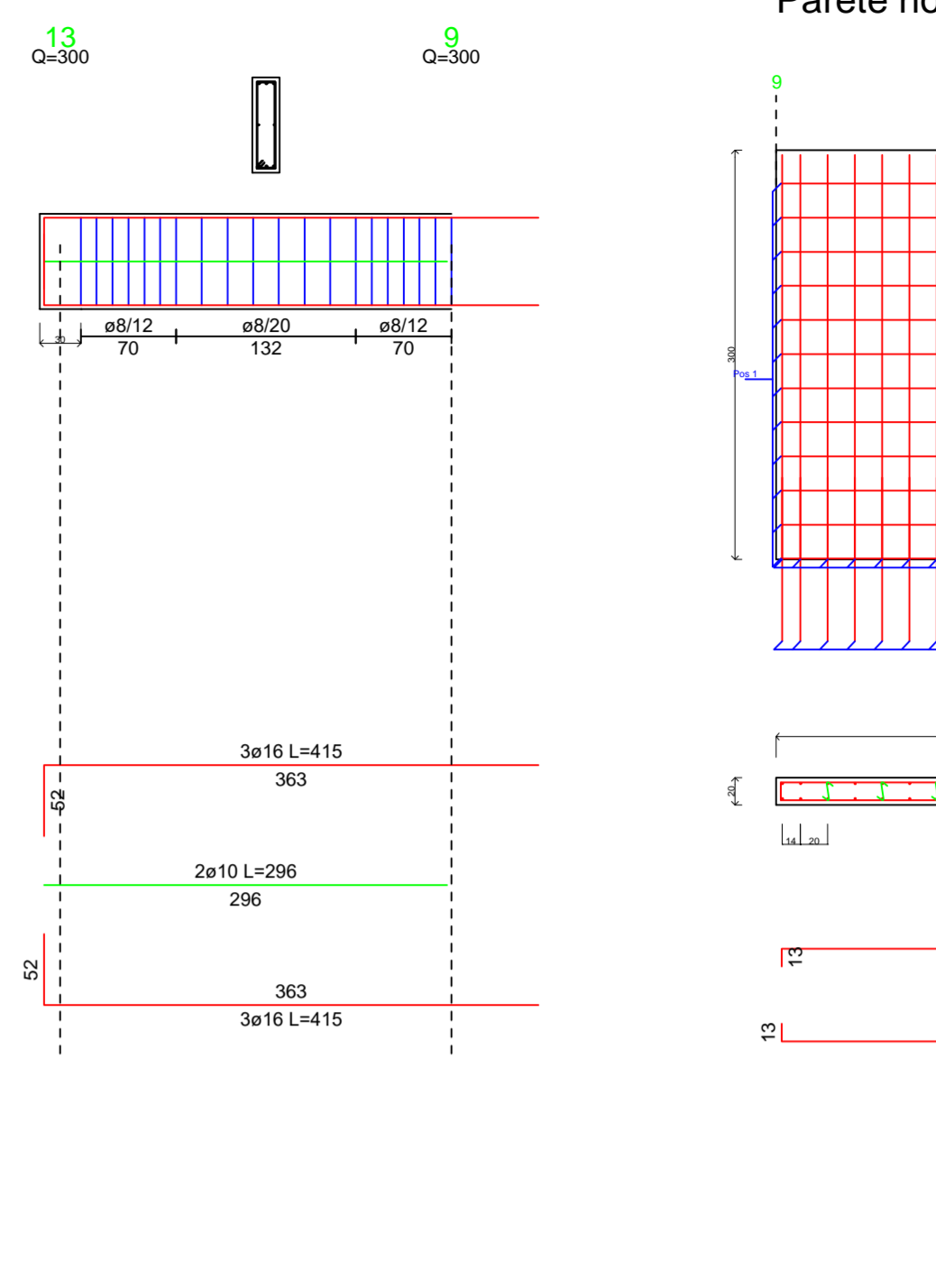
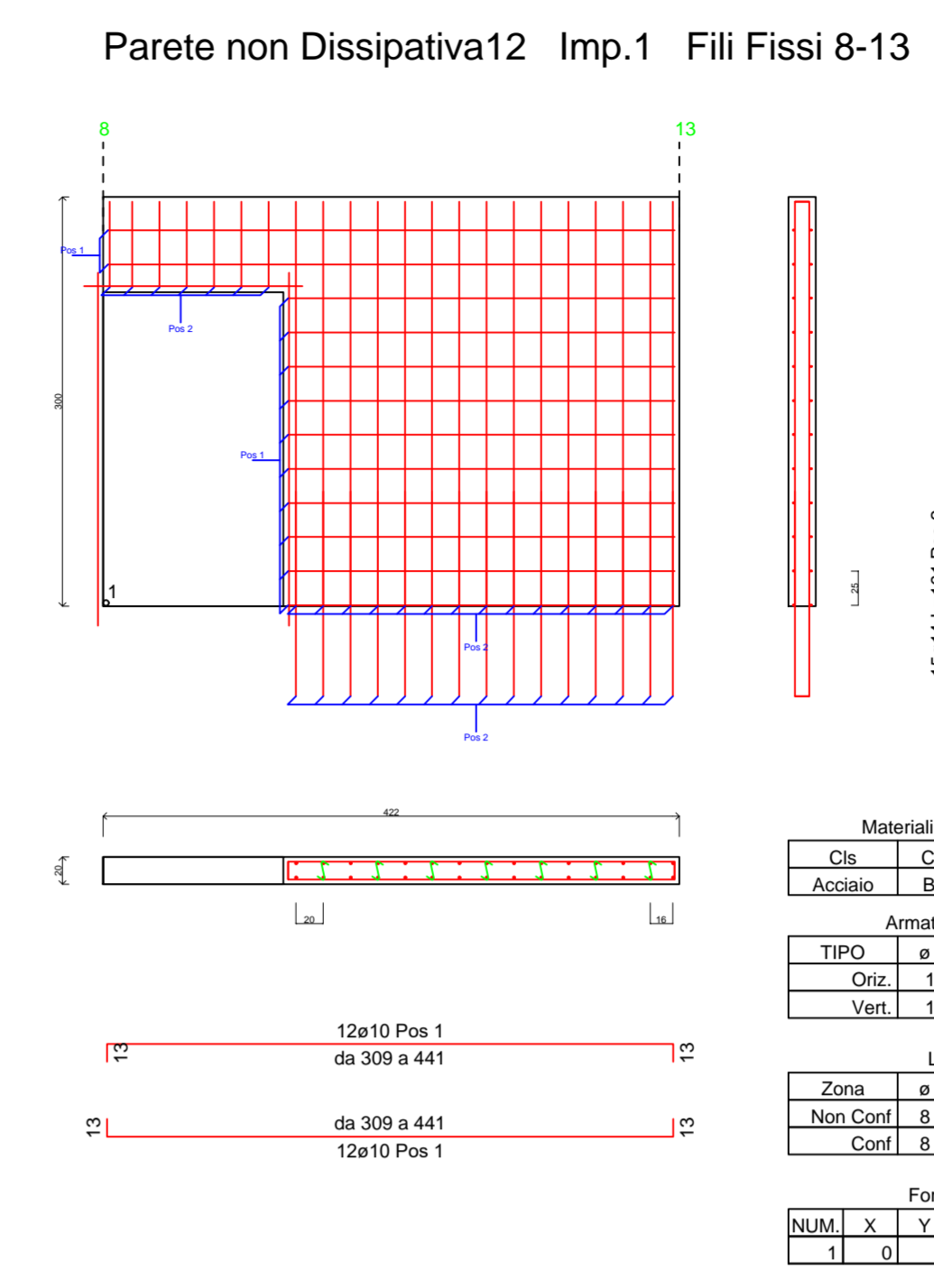
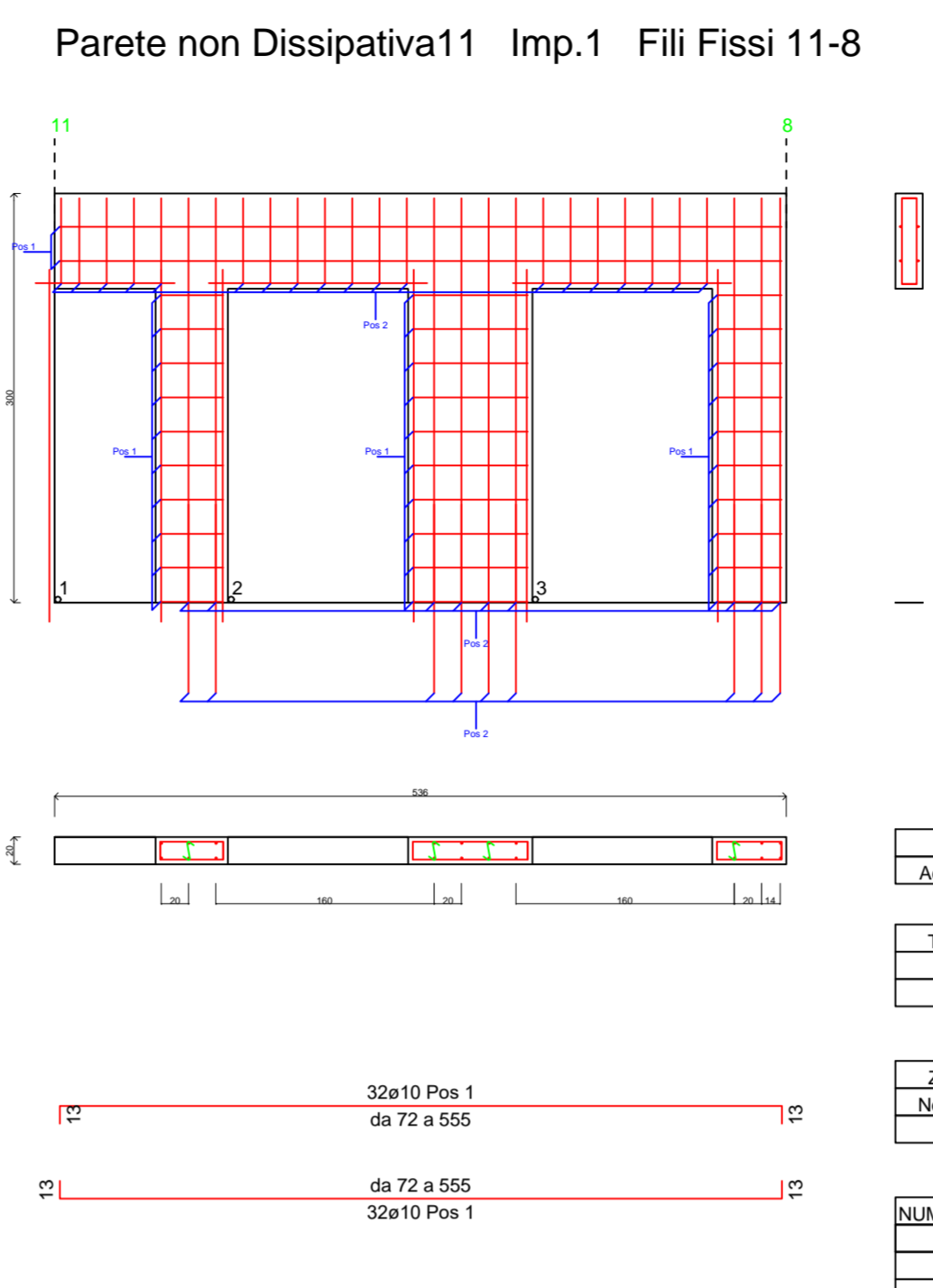
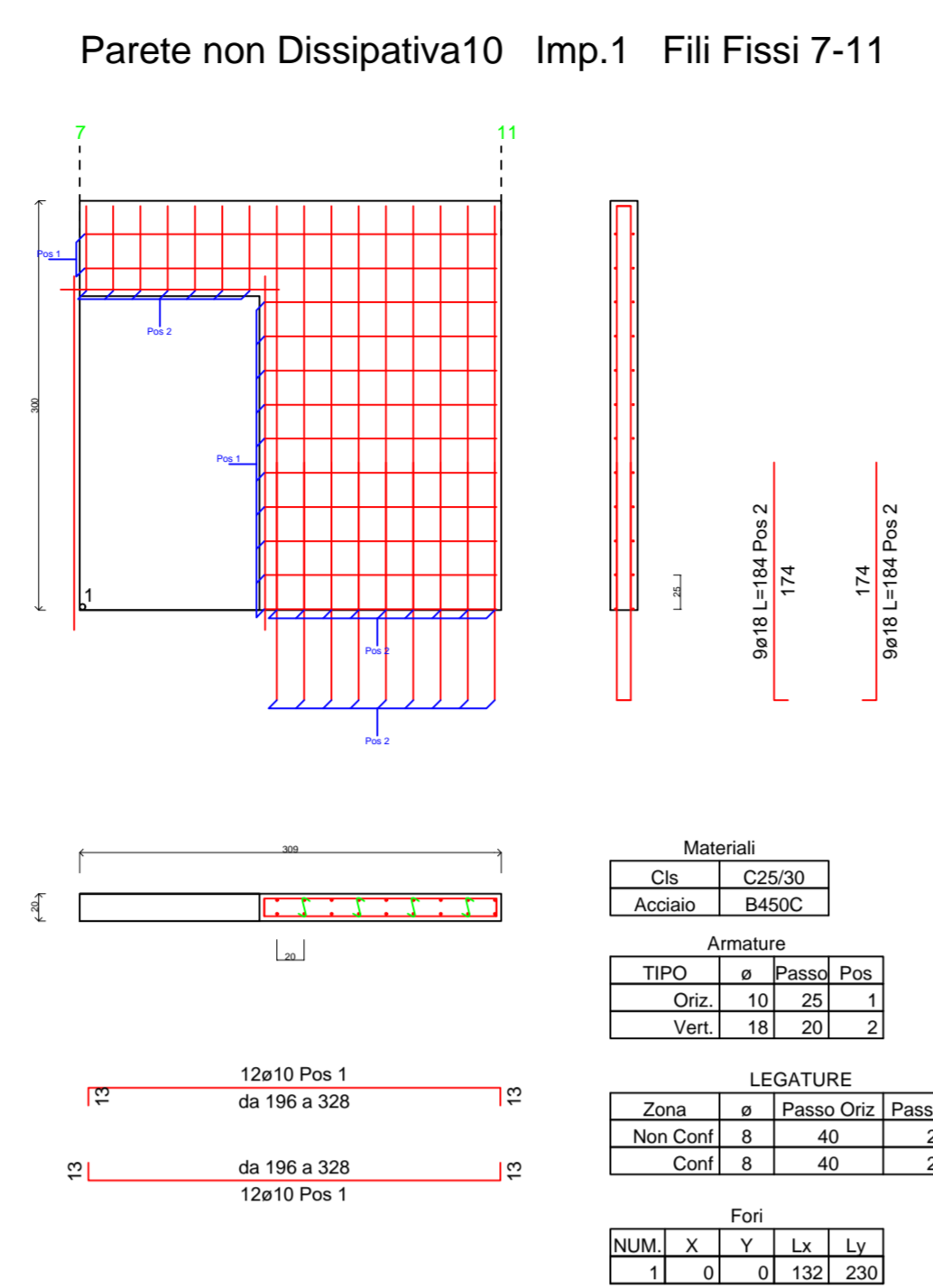
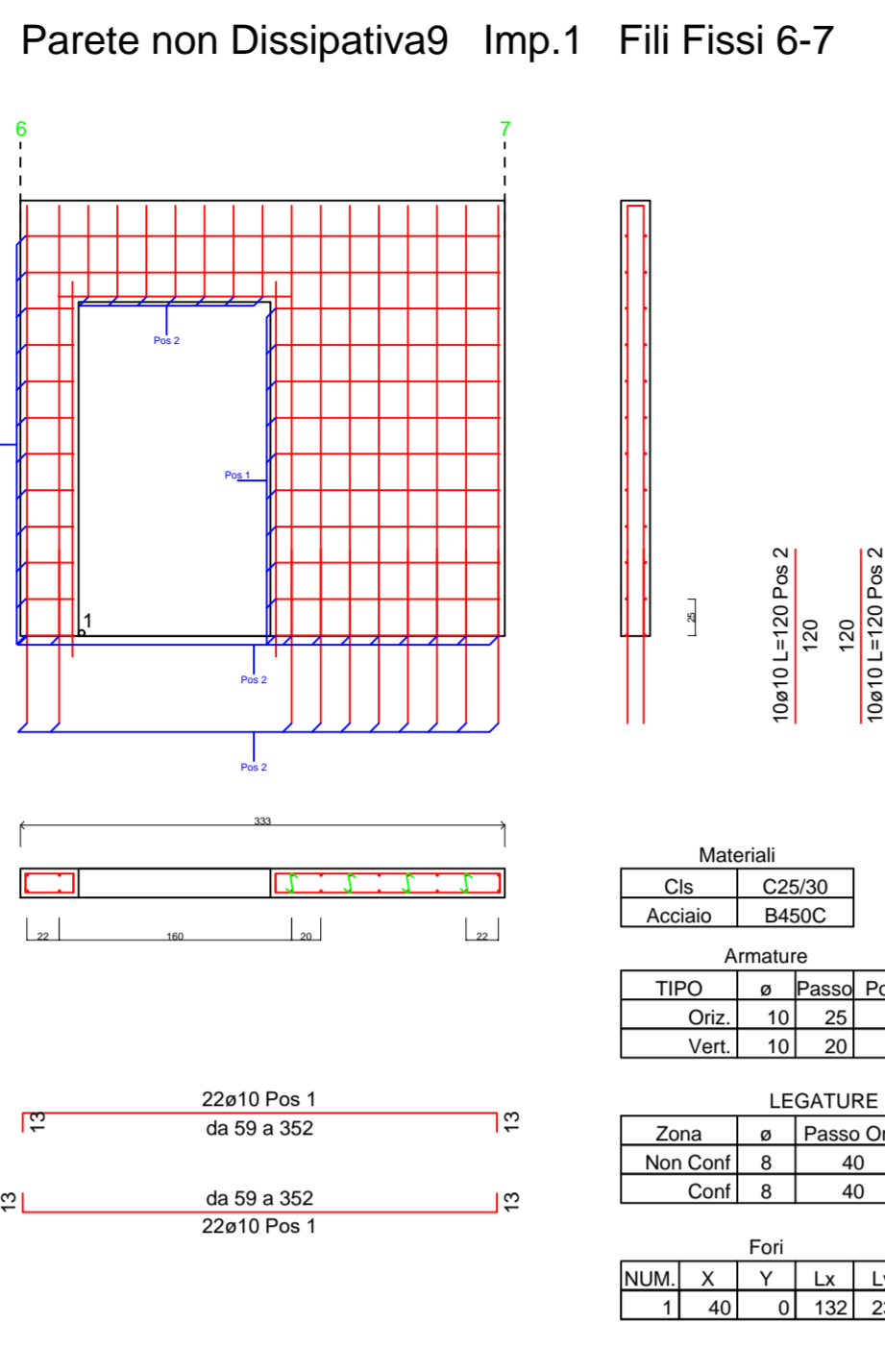
Impressa del pilastro o della parete che arriva all'impalcato

Impressa del pilastro o della parete che spicca dall'impalcato

Posizione Solari	Interno cm	Pannello Tipo	Calata cm	Spessore Solari	P. Prescritti da/da'ing	S. Prescritti da/da'ing	Acc. da/da'ing
S	60	16/4	S	25	215	150	40/40

Solai realizzati con pannelli Planbau-Meta'

NUM	X	Y	Lx	Ly
1	0	0	132	230



Procedura aperta ex art. 183 commi 1-14 d.lgs. 50/2016 s.m.i. per l'affidamento in project financing della concessione di lavori pubblici avente per oggetto la progettazione definitiva ed esecutiva, l'esecuzione dei lavori per la REALIZZAZIONE DEL PORTO TURISTICO E DELLE OPERE CONNESSE NEL COMUNE DI SANTO STEFANO DI CAMASTRA nonché della loro gestione economico-finanziaria C.I.G. 67535662F8

PROGETTO DEFINITIVO

Concessionario Individuo

bruno teodoro
Rappresentante legale: Cono Bruno

Progettista indicato

ACQUA TECNO
Dott. Ing. Paolo Turbolente
Via Ajaccio, 14
00198 Roma

Elaborato

7.4.1 - CE3

Scala

Data: Giugno 2017